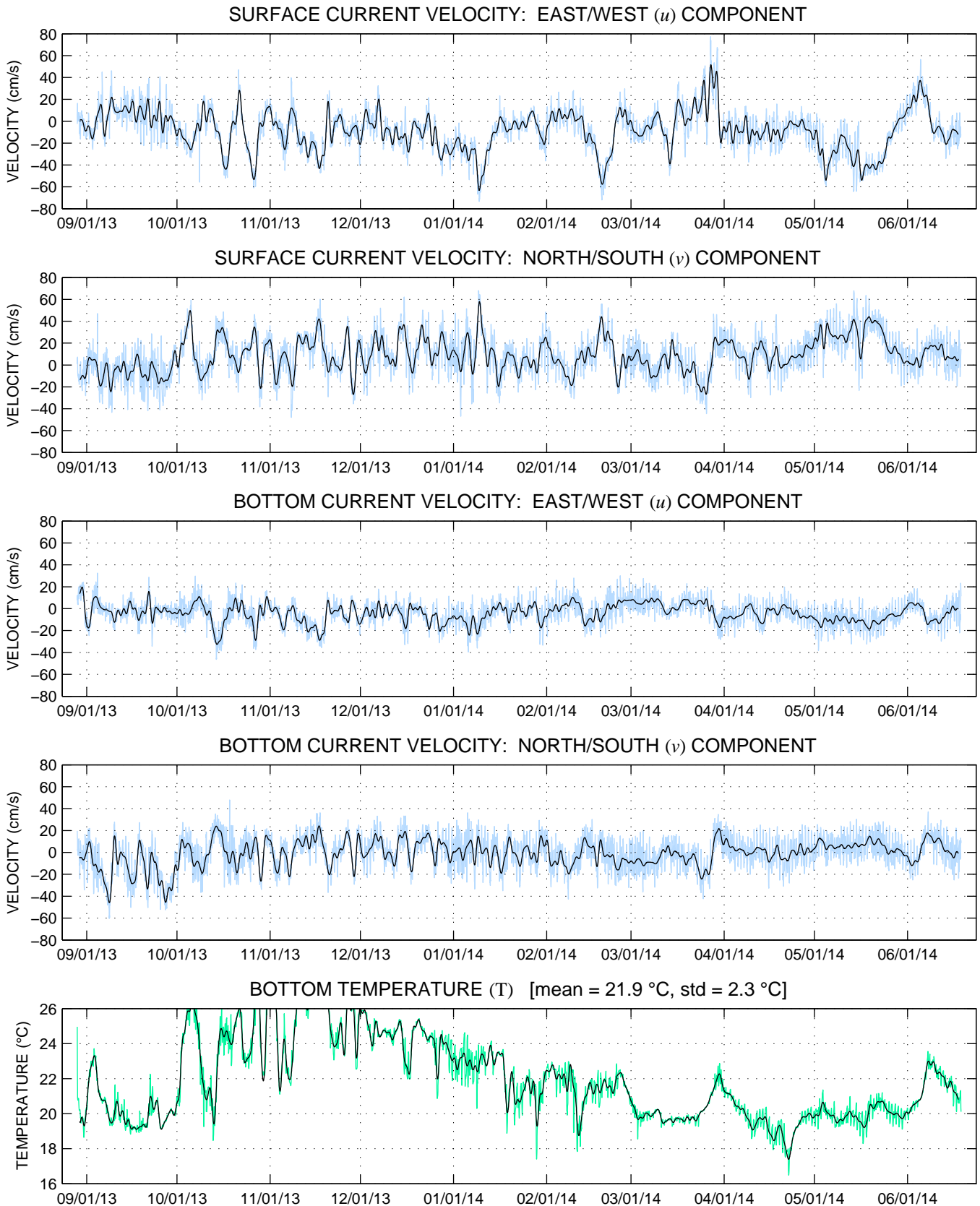


PO-B Southern Dry Tortugas ADCP Mooring: DEP 02 – 28AUG2013 thru 18JUN2014

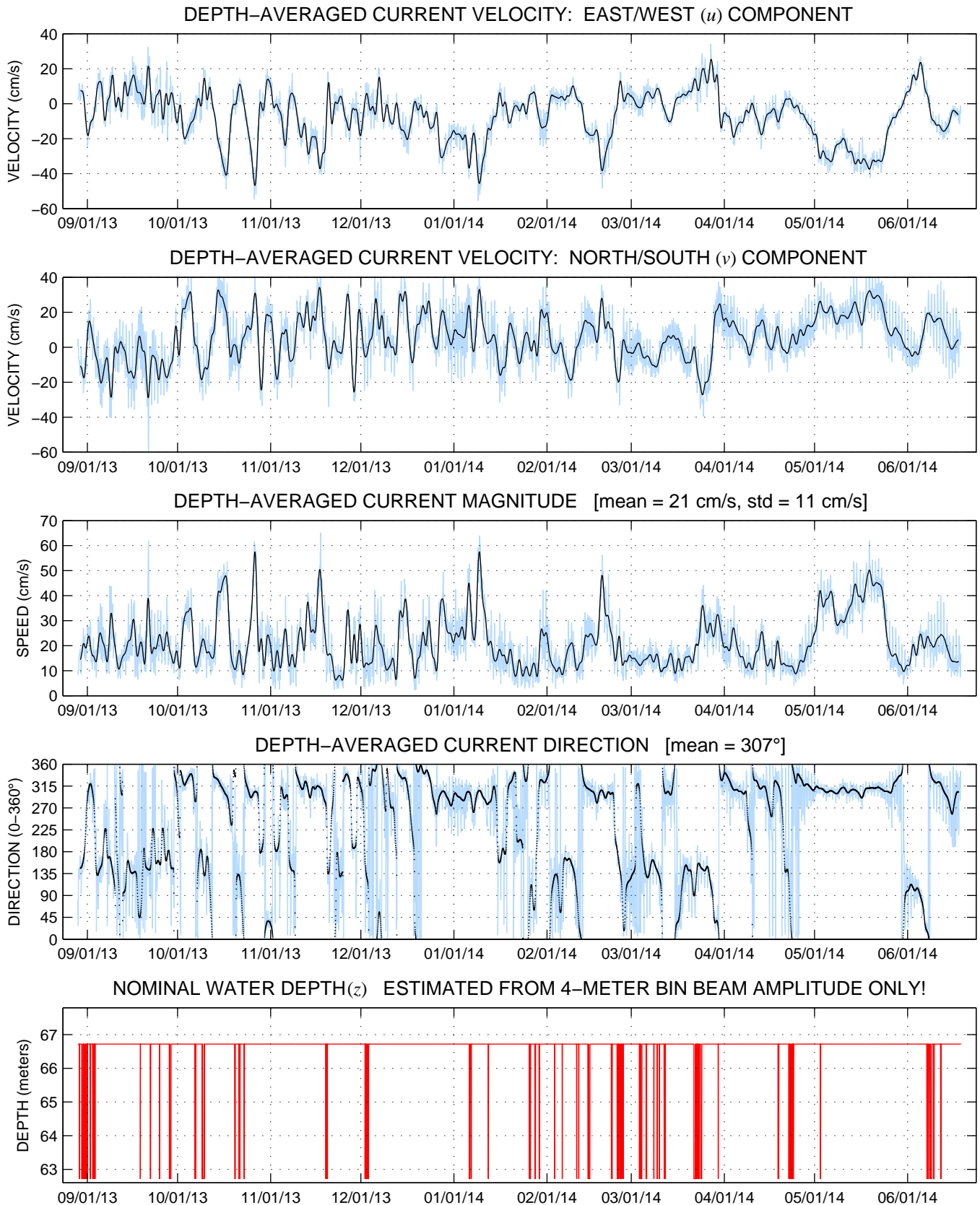


BLACK LINE INDICATES 40HR LOW-PASS DATA.

These plots are a data product intended for general scientific interest only. NOAA/AOML, the University of Miami, and the University of Florida cannot be held liable for the use of this product in any other manner.

For further information, contact ryan.smith@noaa.gov [QC OCT2015].

PO-B Southern Dry Tortugas ADCP Mooring: DEP 02 – 28AUG2013 thru 18JUN2014



BLACK LINE INDICATES 40HR LOW-PASS DATA.

These plots are a data product intended for general scientific interest only. NOAA/AOML, the University of Miami, and the University of Florida cannot be held liable for the use of this product in any other manner.

For further information, contact ryan.smith@noaa.gov [QC OCT2015].