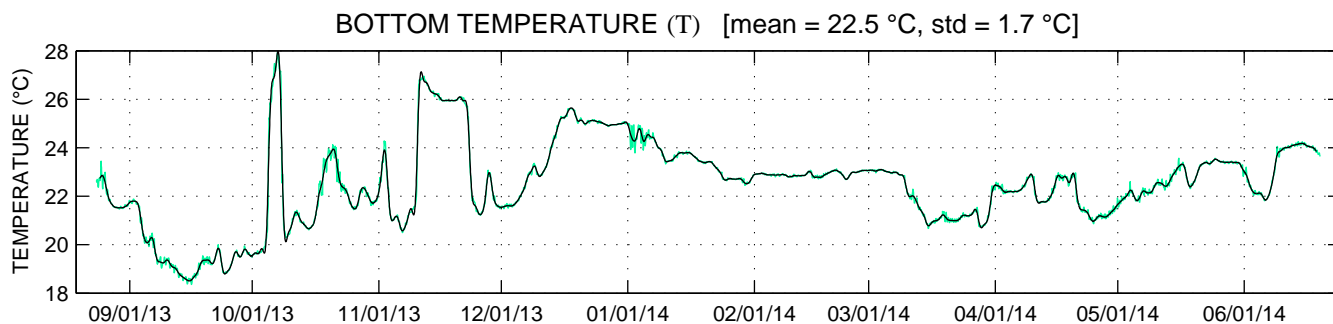
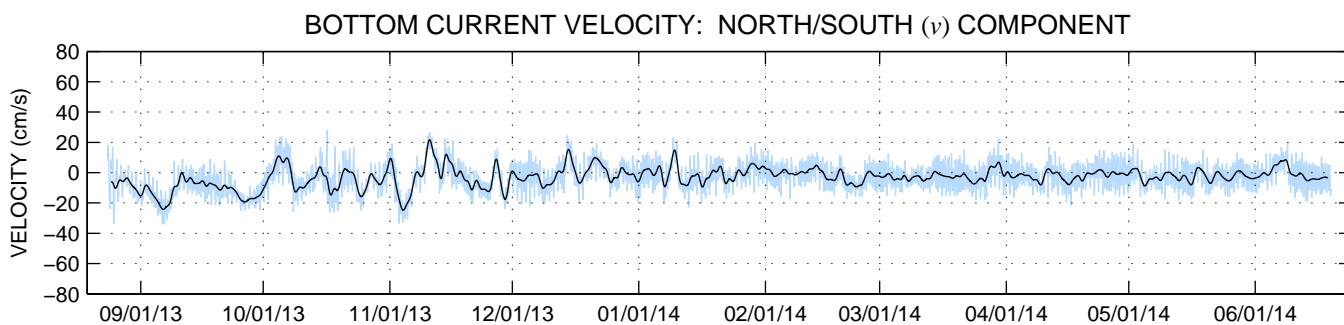
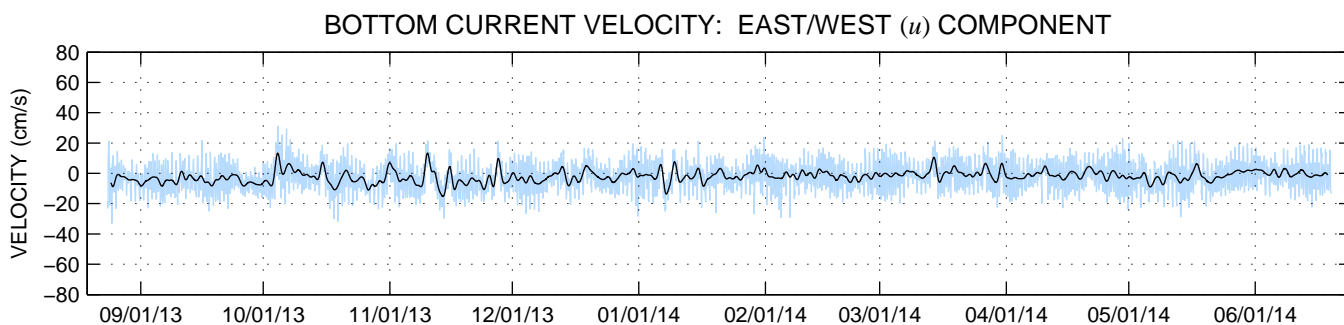
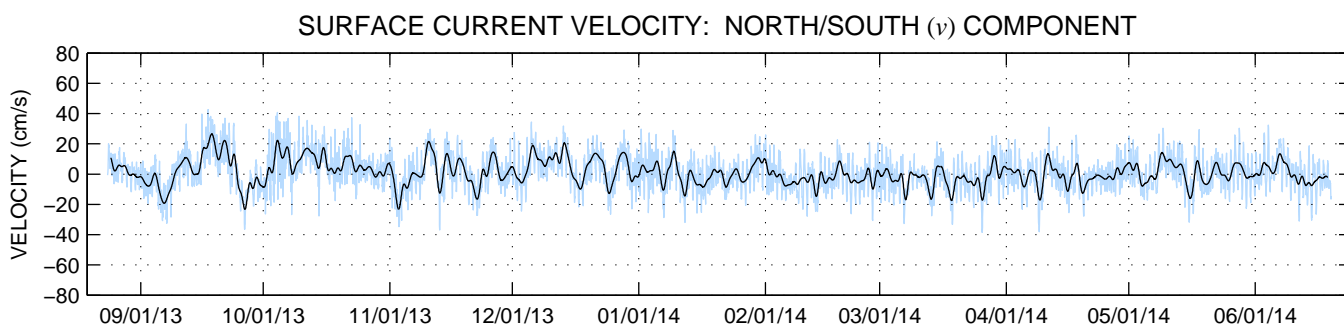
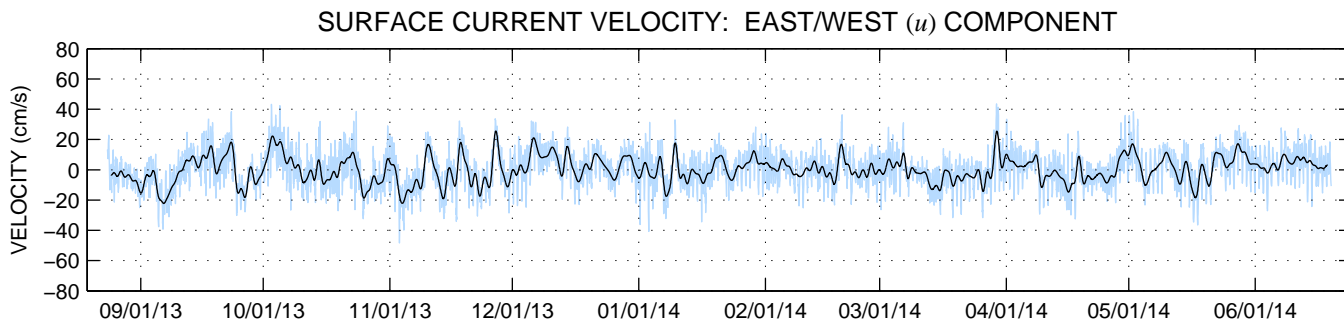


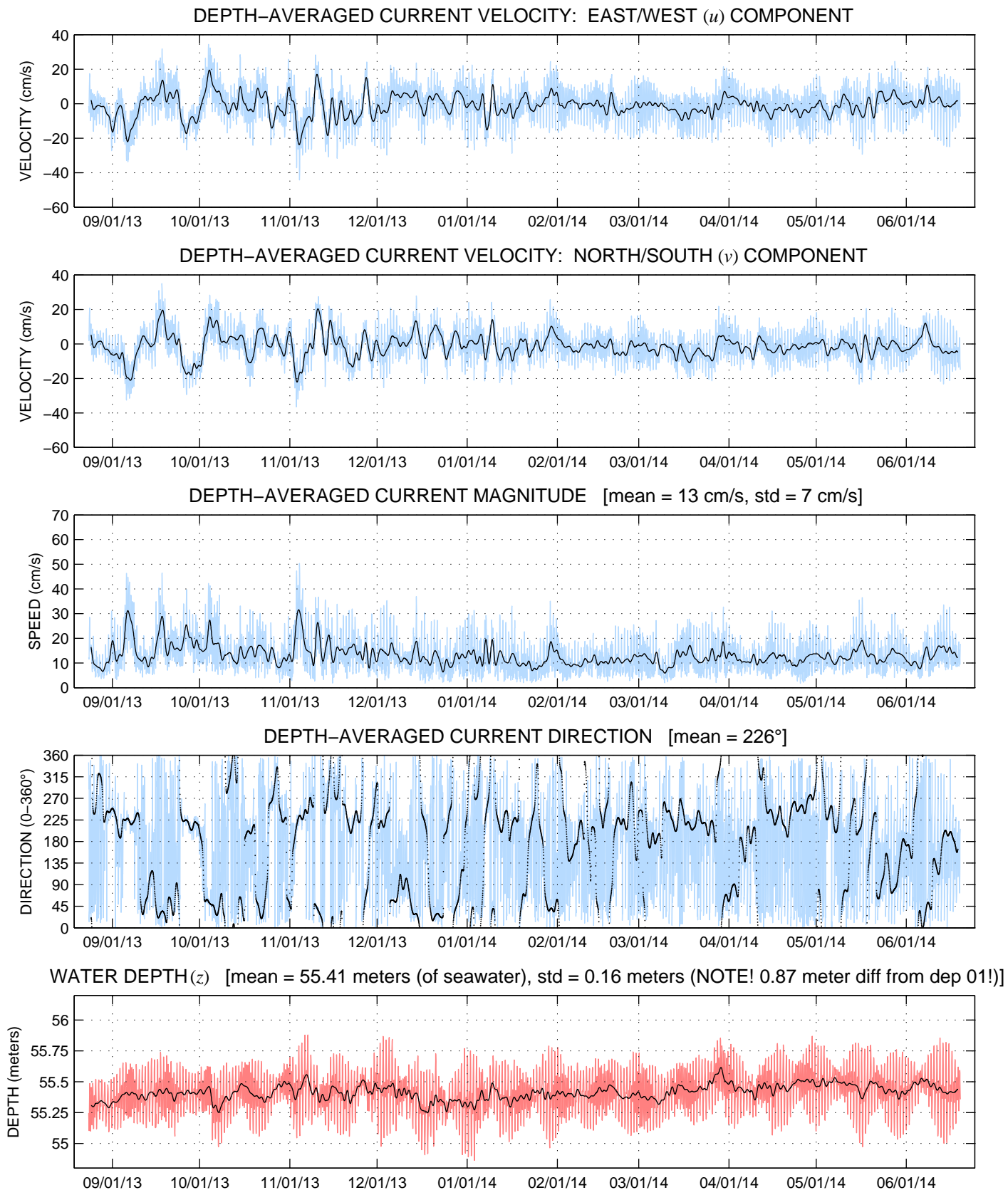
# PO-A Northern Dry Tortugas ADCP Mooring: DEP 02 – 23AUG2013 thru 19JUN2014



BLACK LINE INDICATES 40HR LOW-PASS DATA.

These plots are a data product intended for general scientific interest only. NOAA/AOML, the University of Miami, and the University of Florida cannot be held liable for the use of this product in any other manner. For further information, contact [ryan.smith@noaa.gov](mailto:ryan.smith@noaa.gov) [QC OCT2015].

# PO-A Northern Dry Tortugas ADCP Mooring: DEP 02 – 23AUG2013 thru 19JUN2014



BLACK LINE INDICATES 40HR LOW-PASS DATA.

These plots are a data product intended for general scientific interest only. NOAA/AOML, the University of Miami, and the University of Florida cannot be held liable for the use of this product in any other manner. For further information, contact [ryan.smith@noaa.gov](mailto:ryan.smith@noaa.gov) [QC OCT2015].