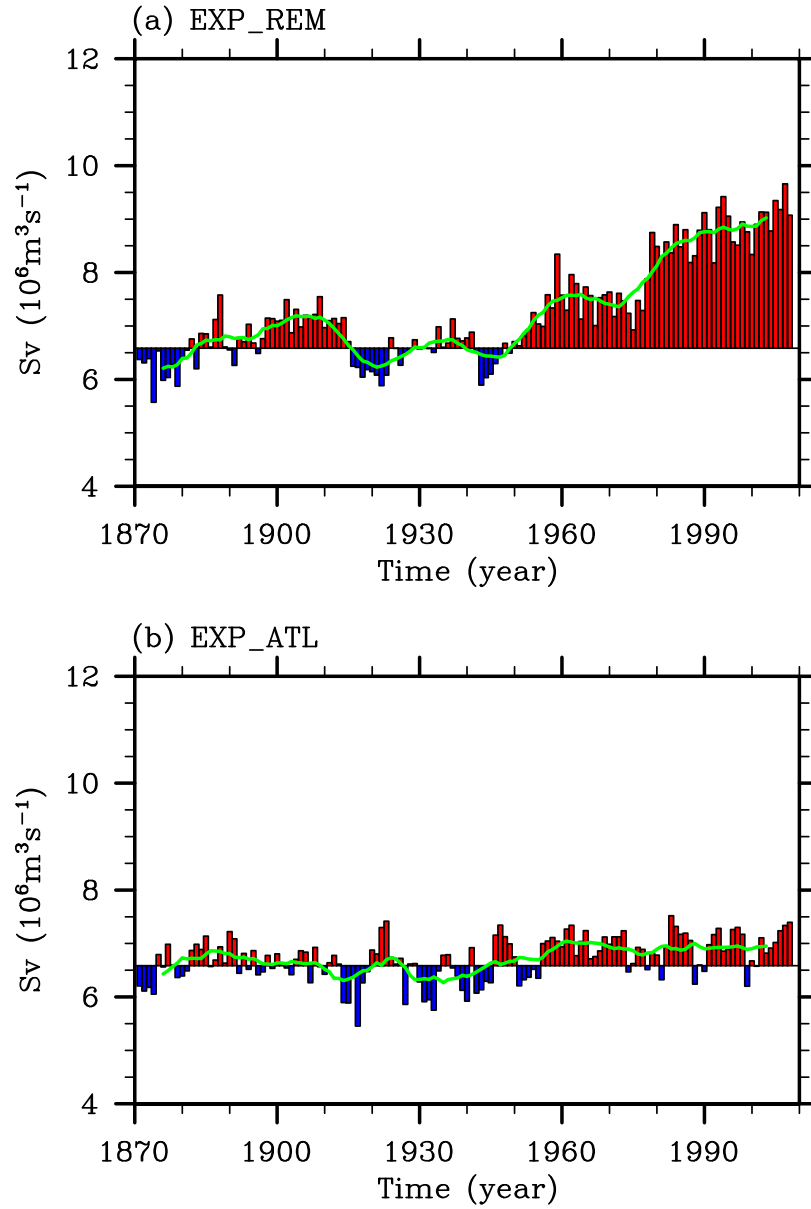


CCSM3_POP: AMOC Index at 30°S



1

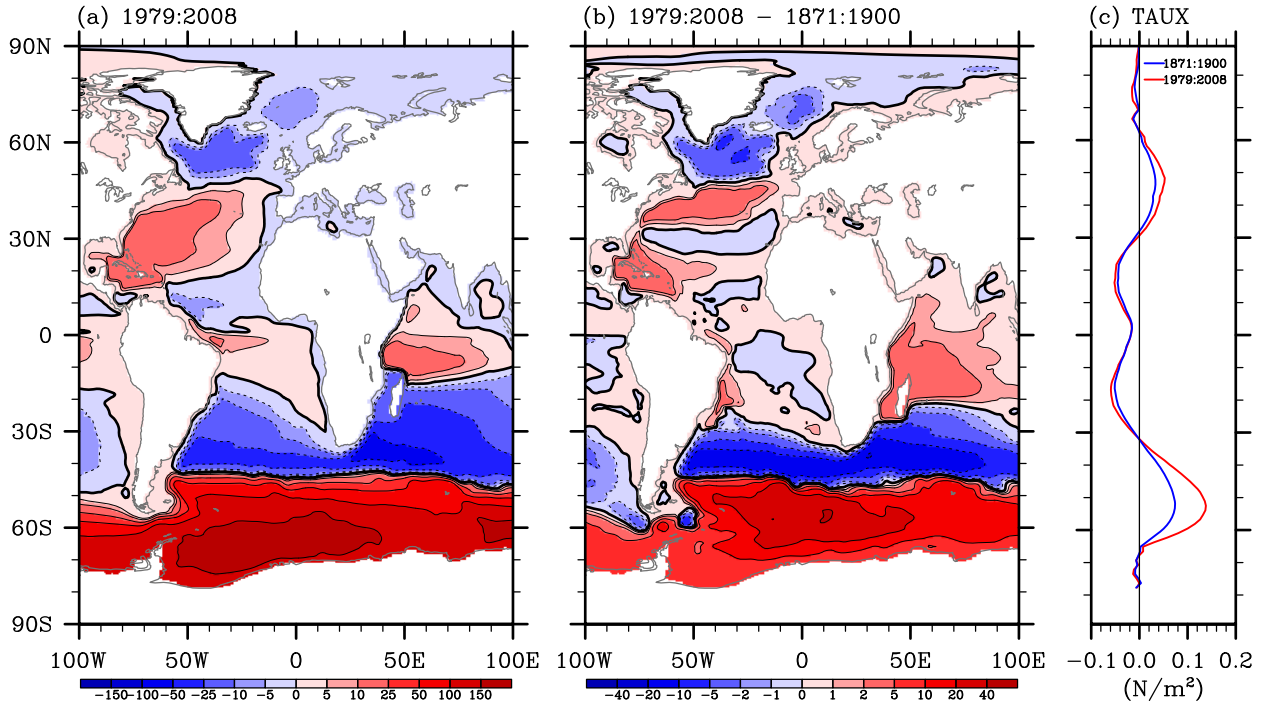
2 **Figure S1.** Time series of the simulated AMOC index (maximum overturning stream function)

3 at 30°S obtained from (a) EXP_REM and (b) EXP_ATL. Green lines are obtained by performing

4 a 11- year running average.

5

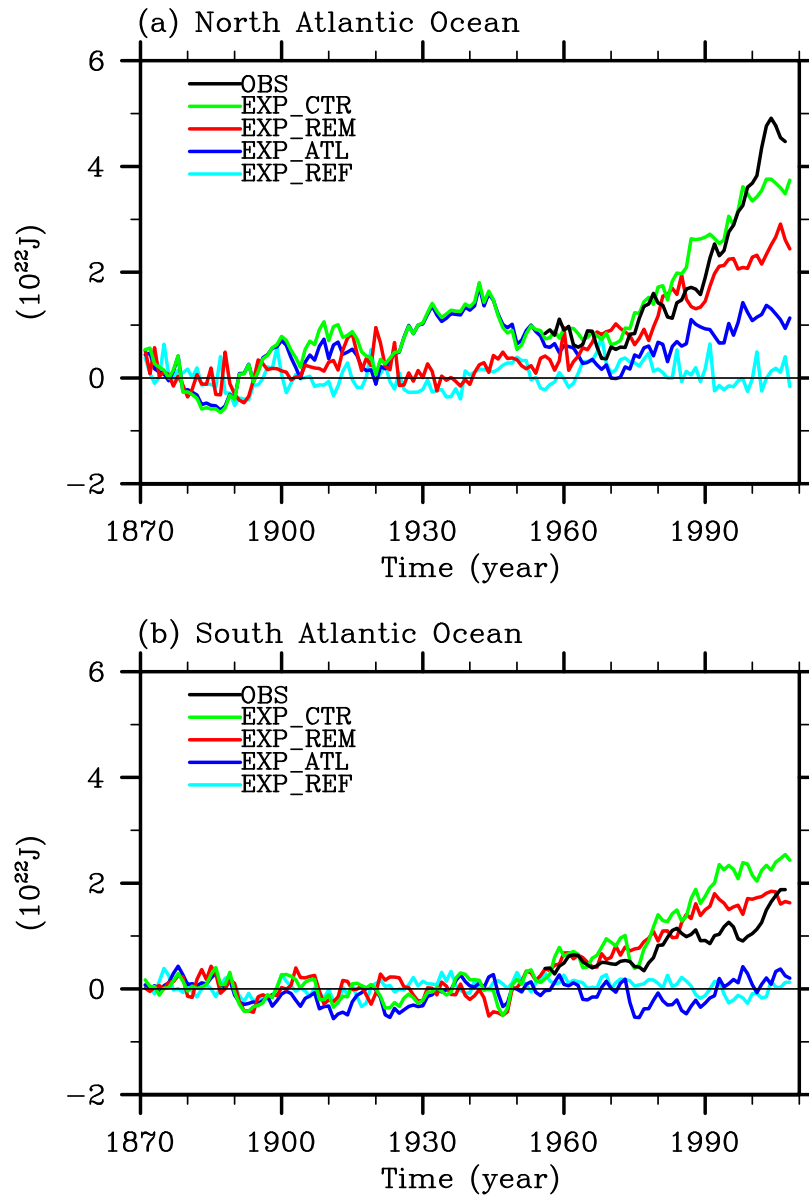
6



1
2 **Figure S2.** (a) Simulated barotropic streamfunction averaged for the 1979-2008 period obtained
3 from EXP_CTR. (b) Difference in the simulated barotropic streamfunction between 1979-2008
4 and 1871-1900 periods, obtained from EXP_CTR. The unit is Sv ($10^6 m^3 s^{-1}$). (c) Globally
5 averaged zonal wind stress for 1871-1900 and for 1979-2008 periods, obtained from the 20CR.

6
7
8
9
10
11
12
13

CCSM3_POP: ATL OCN Heat Content



1
2 **Figure S3.** Simulated (a) North and (b) South Atlantic Ocean heat content changes in the upper
3 700 m in reference to the 1871-1900 baseline period obtained from the four model experiments.
4 The thick black lines in (a) and (b) are the observed heat contents recomputed from Levitus et al.
5 [2009] for the North (equator - 75°N) and South Atlantic (30°S - equator), respectively.