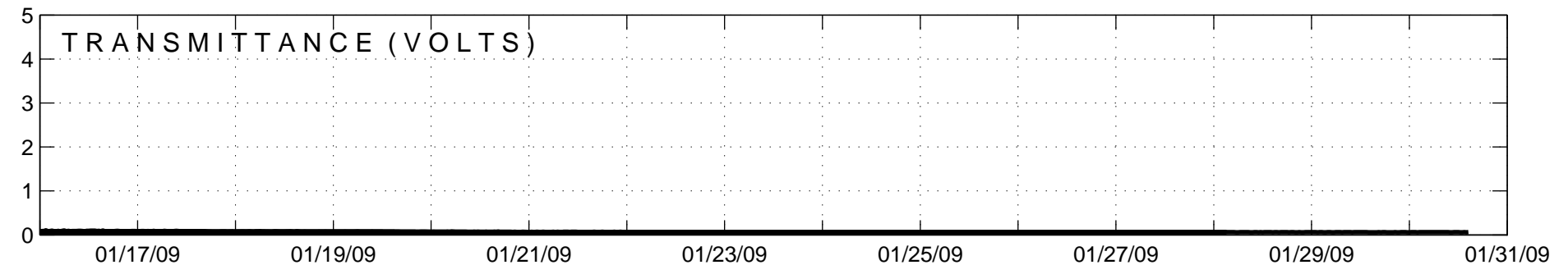
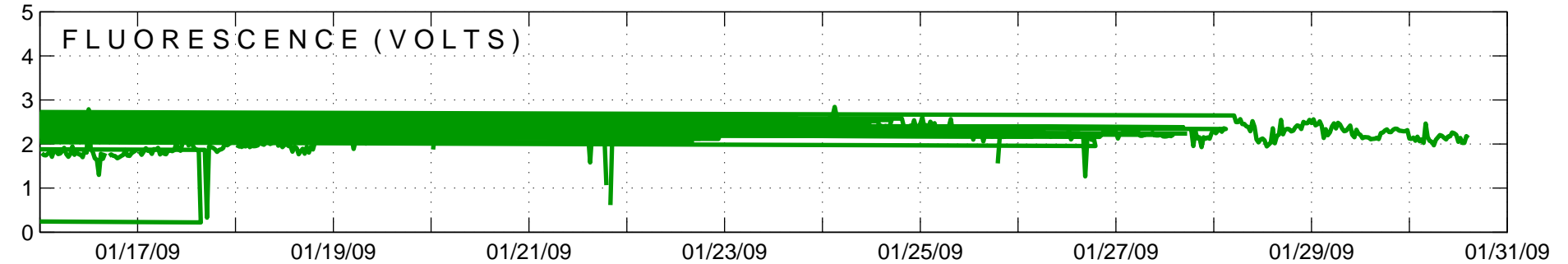
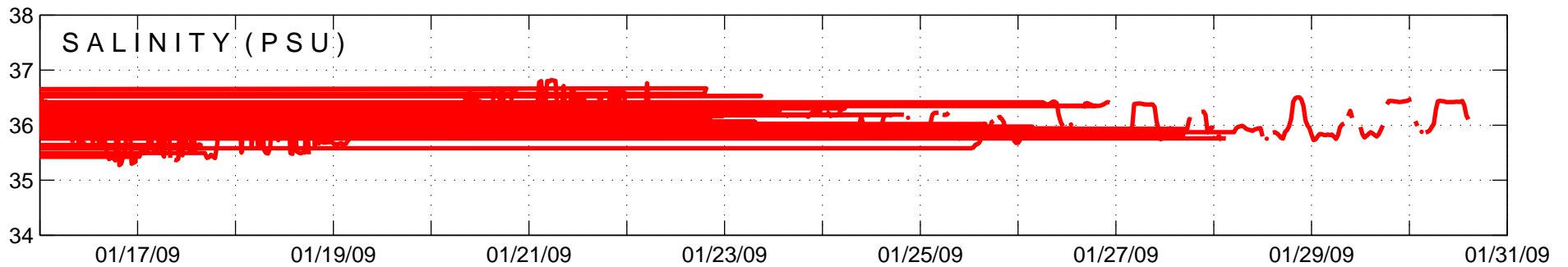
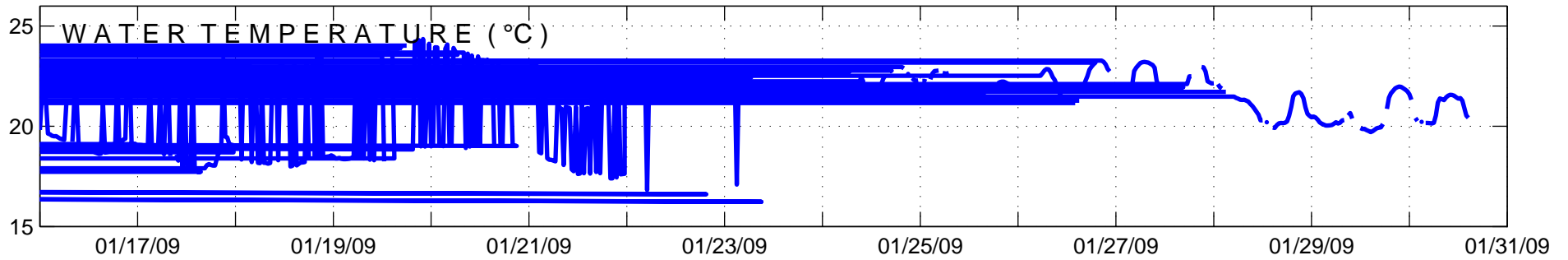


NOAA SF-ROS Monitoring Station '7MB' – Moser Channel, Florida

time-series data (gmt), two week composite
plot generated at 20:46 gmt on 01/30/2009



A real-time product of NOAA/AOML and UM/RSMAS in Miami, Florida. This product should be considered PRELIMINARY, and is intended for general scientific interest only!
NOAA/AOML and the UM/RSMAS cannot be held liable for the use of this product in any other manner. For further information, contact ryan.smith@noaa.gov.