

AMVERSEAS v 9.1 Installation Guide

AMVERSEAS is a comprehensive real-time ship and environmental data acquisition and transmission system, which acquires several types of data such as **AMVER** (Automated Mutual assistance Vessel Rescue system), **Met** (Meteorological), **TSG** (ThermoSalinoGraph), and **XBT** (eXpendable Bathy Thermograph) messages.

This installation guide provides instructions on how to install, and configure AMVERSEAS system on computer for cruise. Note that you can find it under the FTP site:

<ftp://ftp.aoml.noaa.gov/pub/phod/seas/SEAS/Install/AMVERSEAS>

Please Help Us Improve This Manual

We would be very interested to hear any comments you might have on this installation manual. We are particularly interested in learning of mistakes or omissions and subjects that are unclear. Please call or e-mail and direct your comments to Caridad Ibis Gonzalez. Thank you very much for your assistance.

Contact Information

Caridad Ibis Gonzalez
Software Developer
UM/RSMAS/CIMAS and NOAA/AOML/PhOD
4301 Rickenbacker Causeway
Miami, FL 33149
Phone: (305) 361-4322
Fax: (305) 361-4392
E-mail: caridad.i.gonzalez@noaa.gov

Before you install

- Ensure that you have permissions to **write** to the folders where you want install the application and the folders where you archive the data.



AMVERSEAS strategy:

AMVERSEAS will be installed in a separate folder - per default in C:\Program Files\AMVERSEAS_V9 in Windows XP or C:\Program Files (x86)\AMVERSEAS_V9 in Windows 7. It doesn't attempt to modify or create any new files under this folder tree while running.

The programs settings and user data will be stored in the common documents folder where the applications attempt to modify and create new files under this folder tree while running. By default its content is available to read and write by all users. So storing files here will be exposed uniformly to all users without need to adjusting write access for non-admin users.

The folder for documents shared among users:

C:\My Documents on 95/98/ME

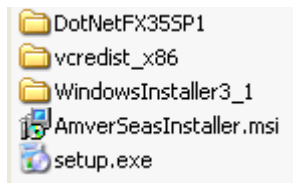
C:\Documents and Settings\All Users\Documents on NT/2000/XP

C:\Users\Public\Public Documents on Vista/7/8

- Ensure that you are up-to-date with your Windows Updates first.
- Remove all antivirus software or fix port 25 exception. Some antivirus like McAfee will prohibit the transmissions.

Starting the Download

The latest AMVERSEAS version will need to be downloaded from the FTP site <ftp://ftp.aoml.noaa.gov/pub/phod/seas/SEAS/Install/AMVERSEAS>. You have to create a folder into a convenient location, and download the required files. Keep these files if you want to reinstall.



Installing AMVERSEAS

In order to install AMVERSEAS on the computer double click on **setup.exe** application.

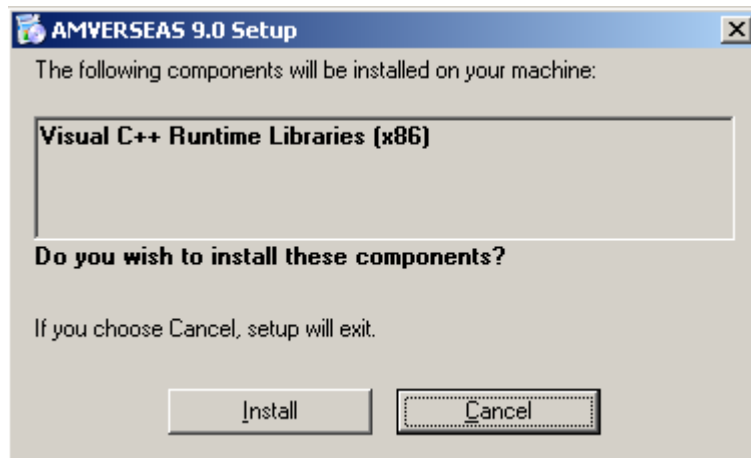


If you want to retain the metadata before you uninstall AMVERSEAS try this:

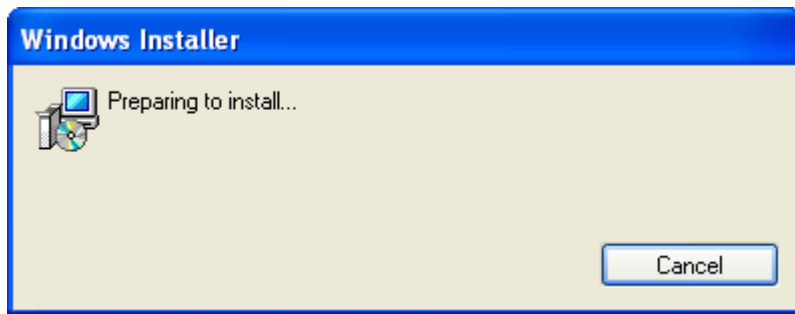
1. *Rename the DataBases folder, in Windows XP located in C:\Documents and Settings\All Users\Documents \AMVERSEAS_V9\DataBases, and Windows 7 located in C:\Users\Public\Public Documents \AMVERSEAS_V9\DataBases (e.g. DataBases to DataBasesOld).*
2. *Remove AMVERSEAS.*
3. *Install AMVERSEAS again.*
4. *Delete the DataBases folder.*
5. *Rename the old DataBases folder (e.g. DataBasesOld to DataBases).*

Also you have to do the same with the .ini files located in AMVERSEAS_V9 folder.

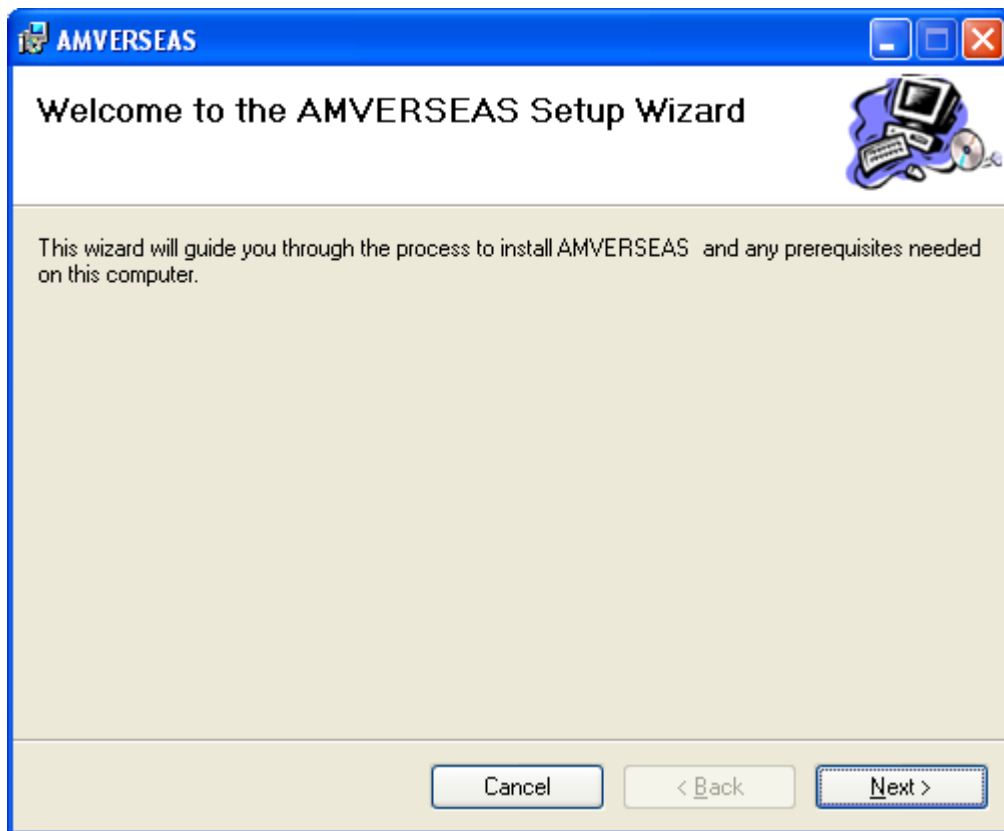
You may get asked to install prerequisites if your computer does not have Visual C++ 2008 installed. The .NET Framework 3.5 SP1, and the Visual C++ Runtime Libraries (x86) component will be installed. This component is required to run AMVERSEAS v 9.1 modules. Please choose **always Accept** and/or **Install**.



Once this component was installed the AMVERSEAS installation begins.

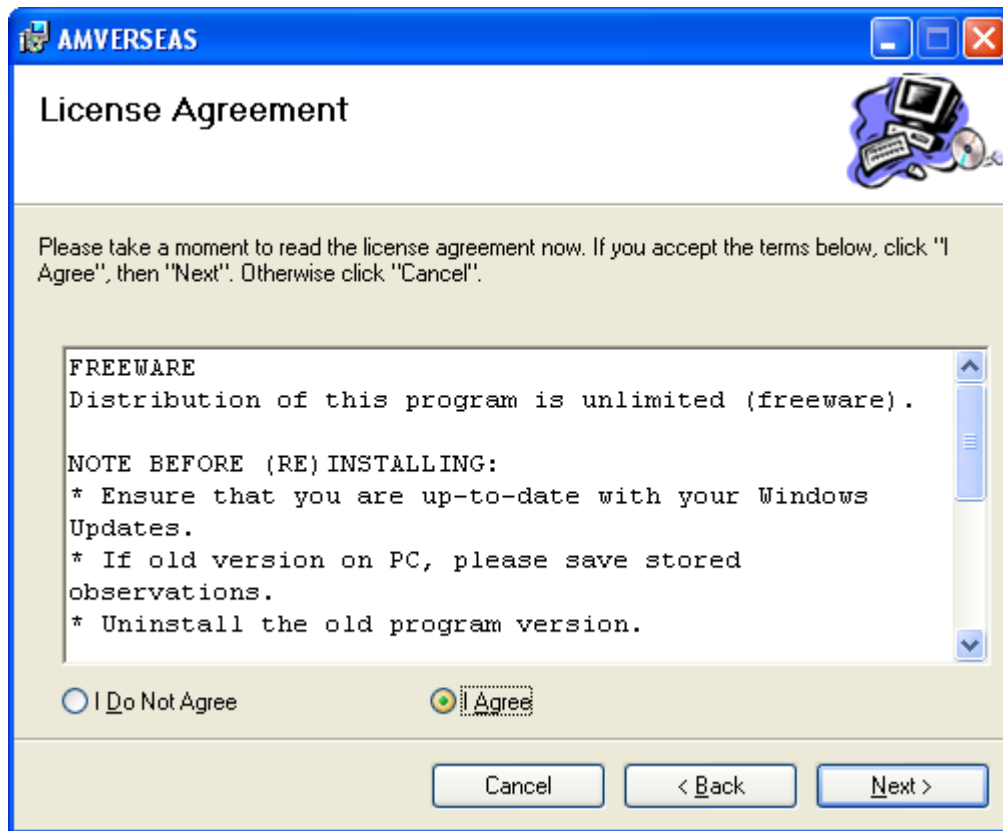


A welcome dialog box will appear, please follow installation directions.



Click on **Next>** to continue to the Setup Wizard.

If you have continued you will get the license agreement and installation information. This software is available for use at no monetary cost.



Click on **Next>** to continue to the Setup Wizard after you click **I agree**.

If you have continued you will get the option of installing the optional applications of AMVERSEAS by checking the appropriate box.

SEAS Transceiver Interface: Real-time application which combines reception of GPS data and transmission of collected data via several devices.

SEAS XBT Data Recorder: Real-time application which obtains information on the temperature structure of the ocean to depths of up to 2000 meters.

SEAS TSG Data Recorder: Real-time application to collect thermosalinograph data.

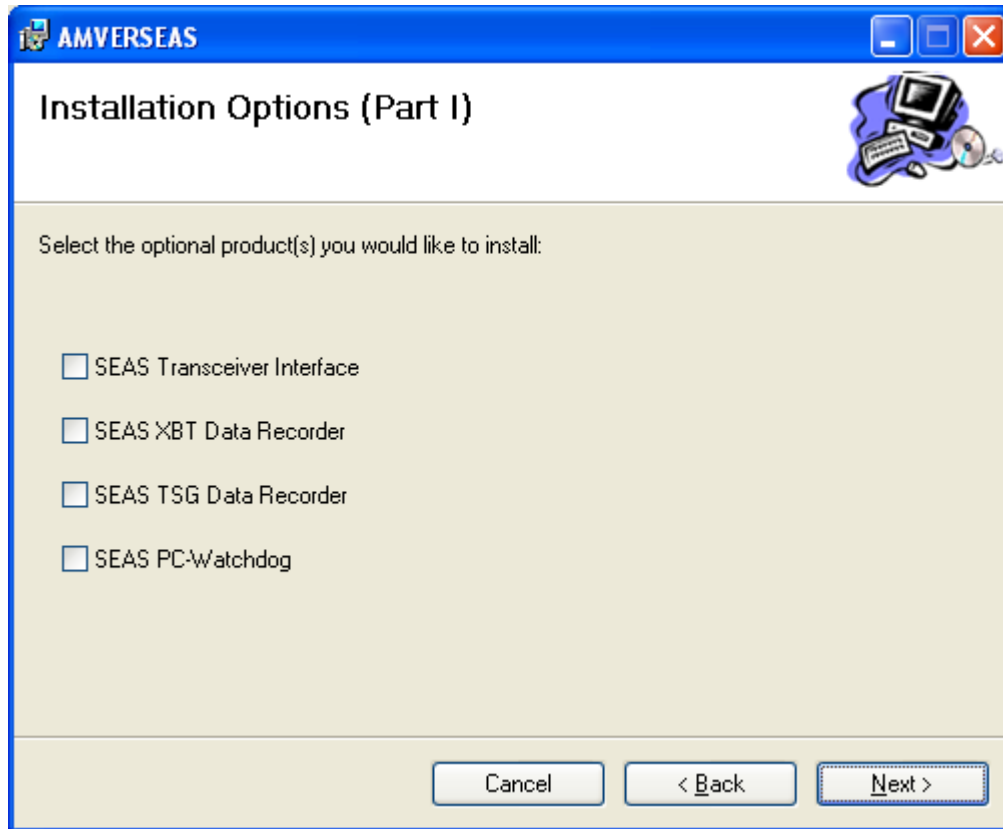
SEAS PC-Watchdog: to monitor the proper operation of the AMVERSEAS components. It is designed to keep the applications running continuously.

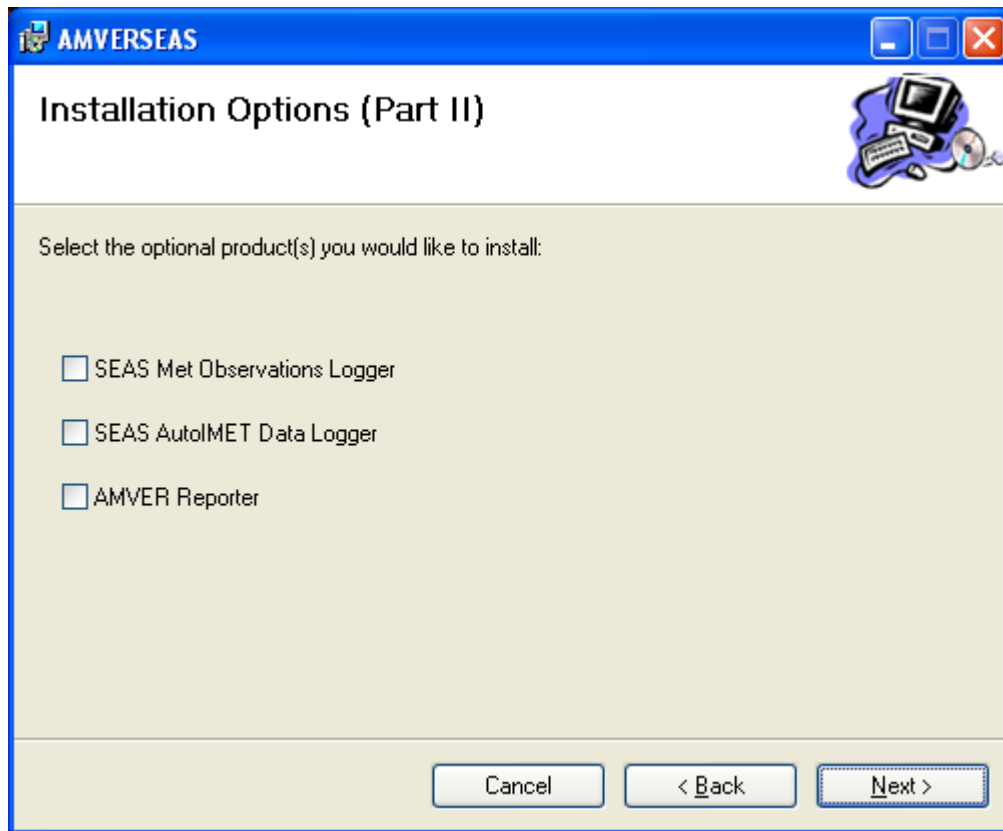
SEAS Met Observations Logger: Manual component that provides accurate meteorological and oceanographic data in real time from ships at sea.

SEAS AutoIMET Data Logger: Real-time application to produce automatically high quality marine weather observations. It connects to a Remote Computer System using sockets to retrieve a data stream containing the measured weather parameters.

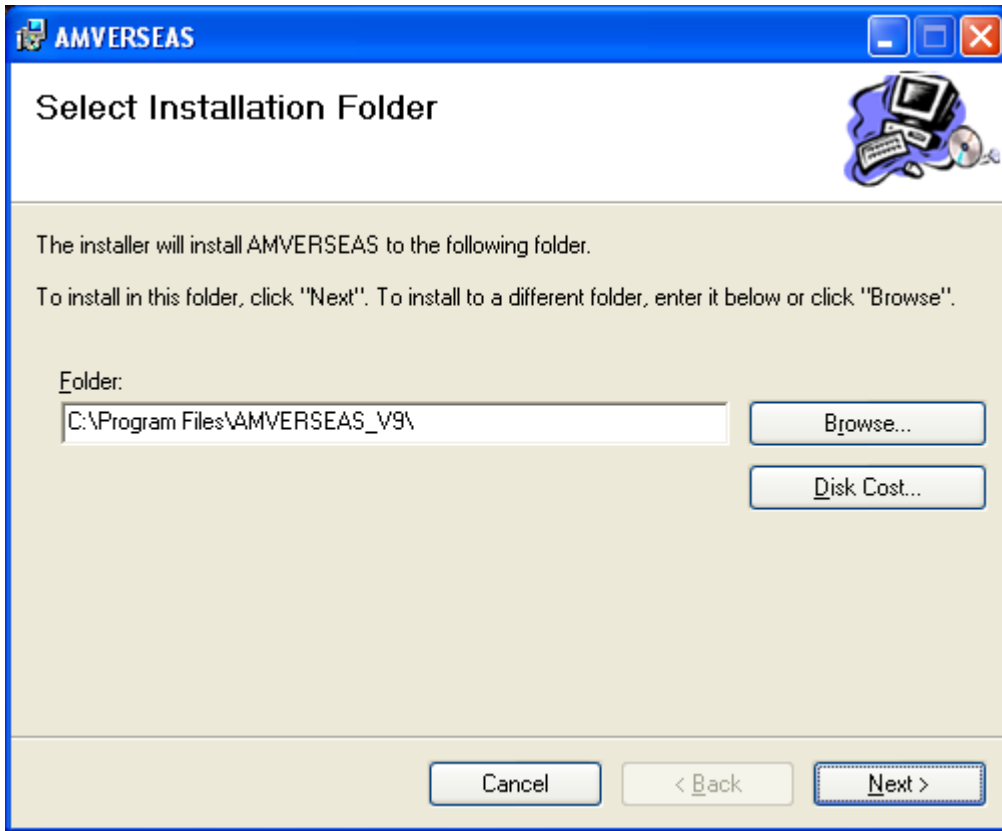
AMVER Reporter: Submit four types of reports (Sailing plan, Deviation report, Position report, and Arrival report) used by the U.S. Coast Guard to update their data base for search and rescue operations.

To continue with the installation click the **Next>** button.



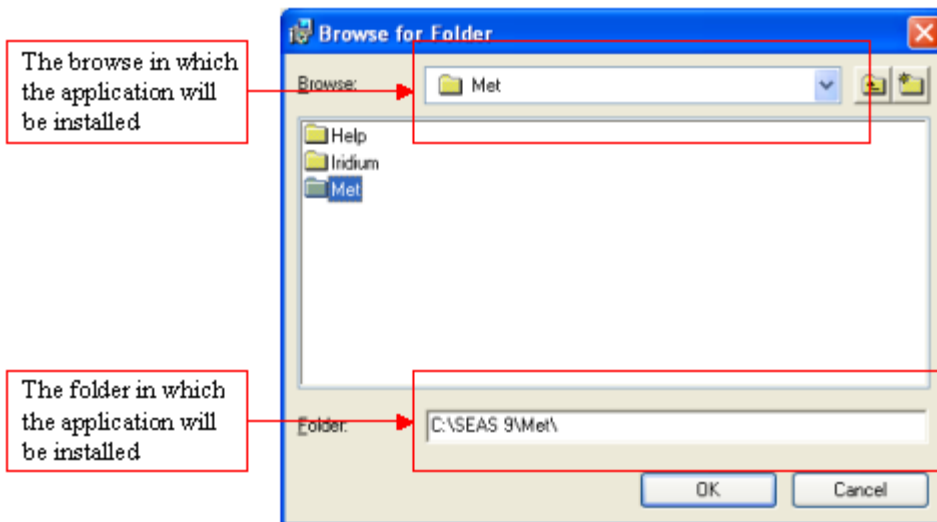


Per default the Setup shows you a predetermined folder to install the selected AMVERSEAS components. To install to this folder, click **Next>**. To change the installation location, enter it in the **Folder** field or click **Browser** to select another folder.



If you want to install AMVERSEAS components in another folder the **Browse for Folder** dialog appears that allows you to select a folder.

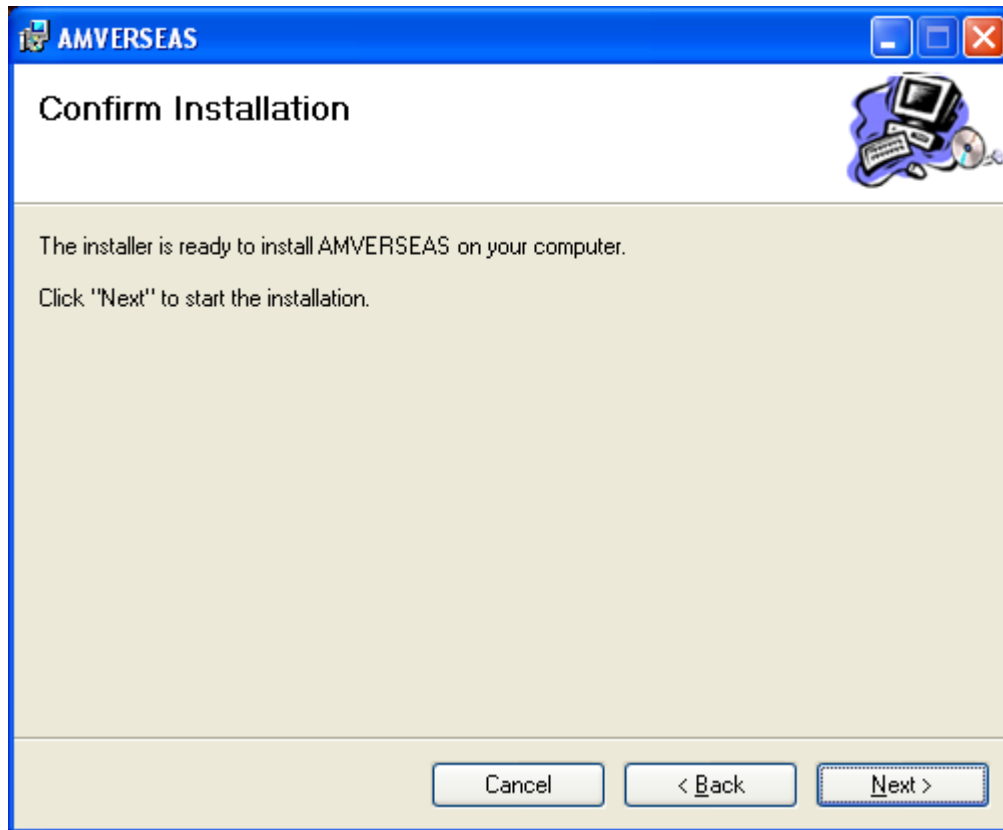
When this dialog box comes up, it displays the predetermined folder. To use it, you can select the browse in the list box **Browse** or enter it in the **Folder** field then click **OK**.



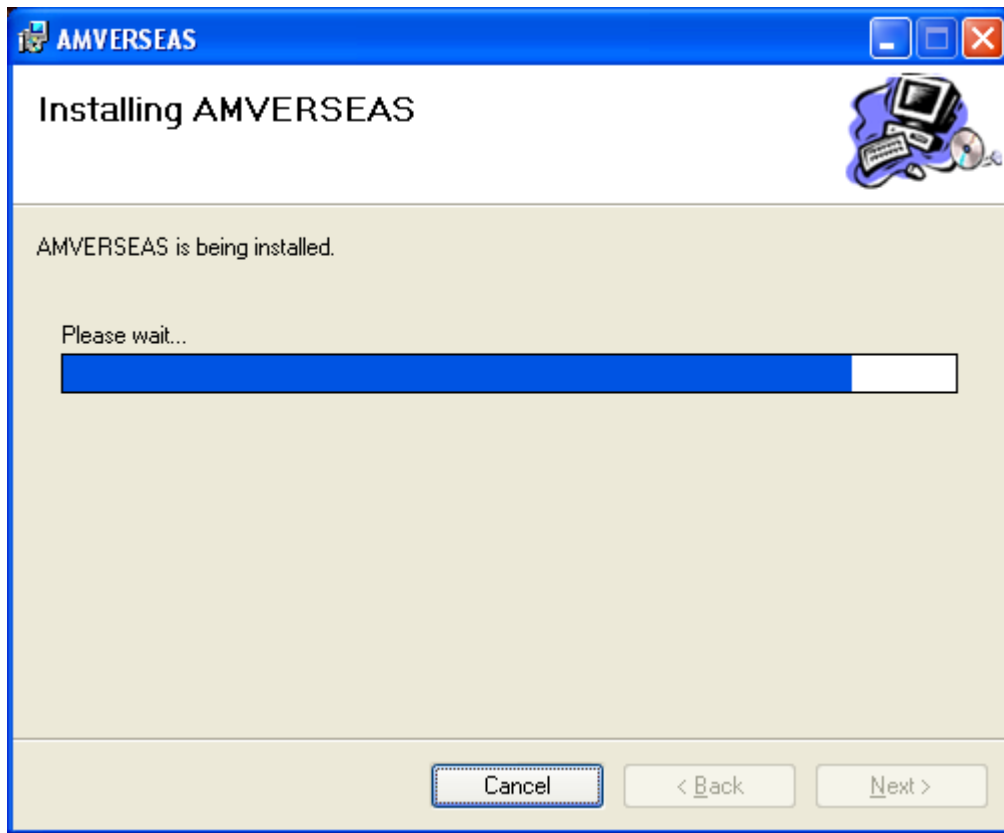
You are almost ready to install, check you have enough disk space free by clicking the **Disk Cost** button. As a general rule, Windows works best with at least 10-20% of the disk free.

Click the **Next>** button when you are ready.

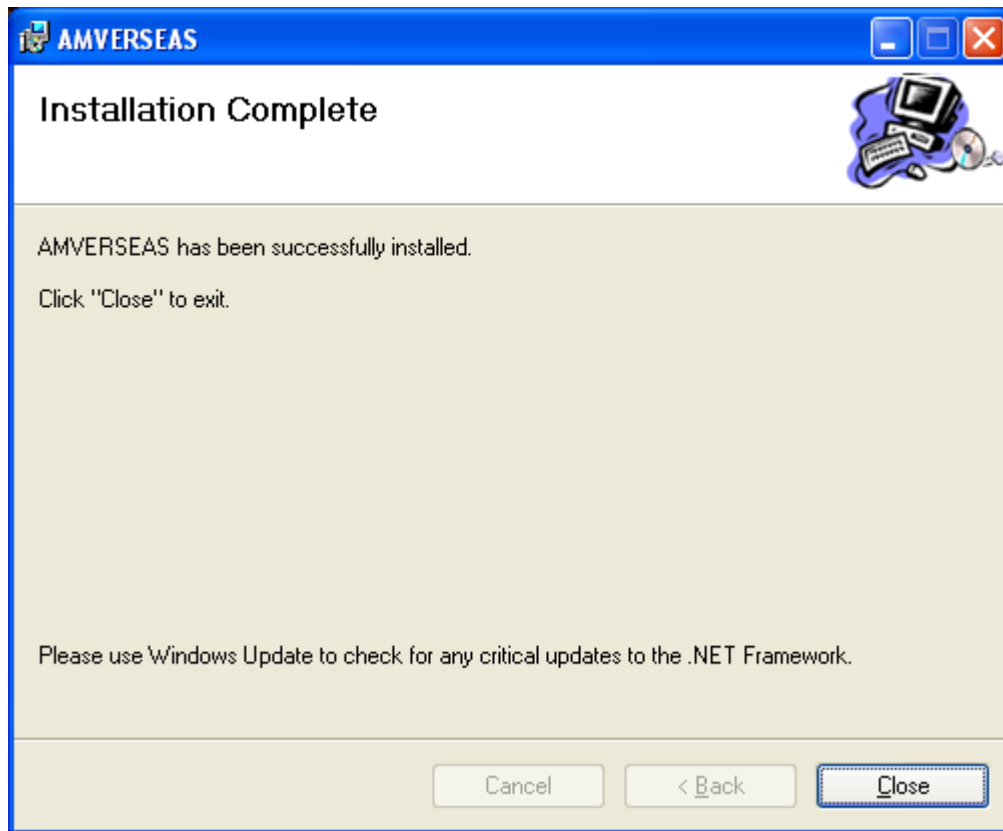
Then the confirmation dialog appears.



When you click the **Next>** button the AMVERSEAS installation begin. This step will take a while.



When the installation was completed the completion dialog appears.

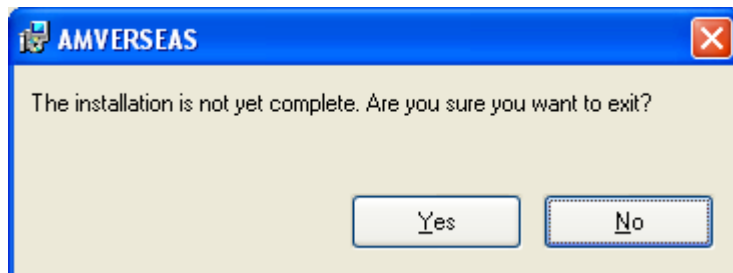


Then click **Close** to finish the installation process.

Now you have the AMVERSEAS icon on your desktop, and the Start menu that allows you to start the application by double clicking on it.



Always you can choose not to install AMVERSEAS by clicking **Cancel** to exit the Setup. Following dialog box will appear.



If you are sure that you want to exit the installation process click **Yes**, and close the Setup Wizard by clicking **Close**.

