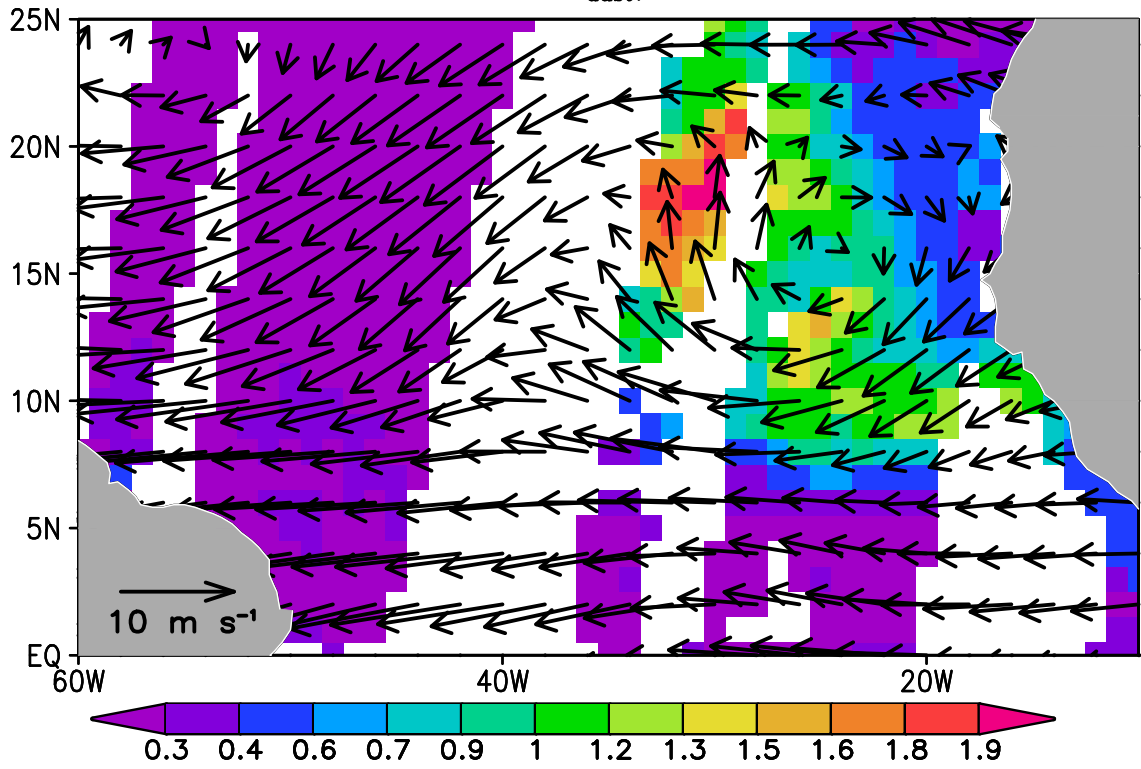
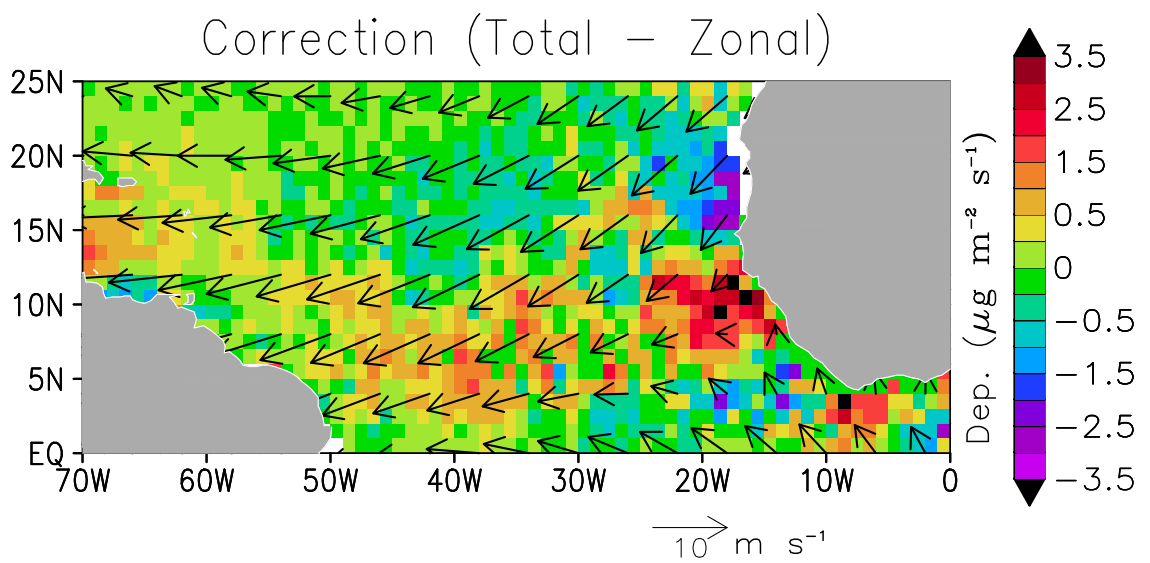
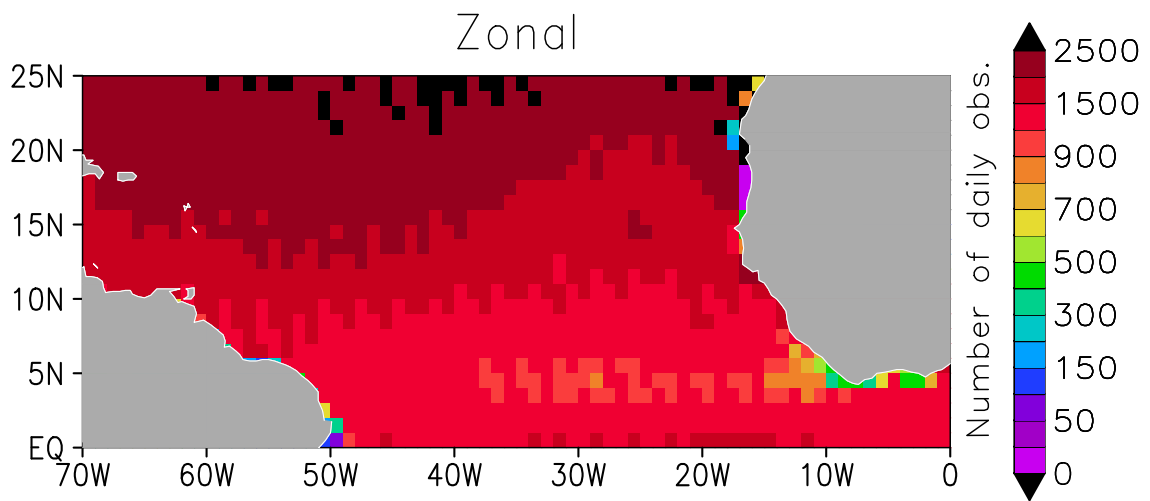
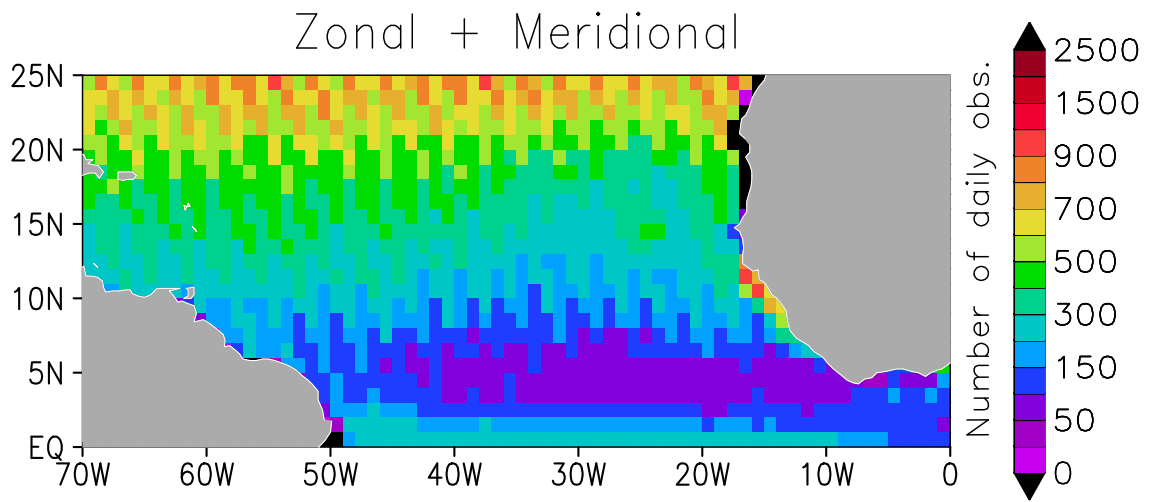
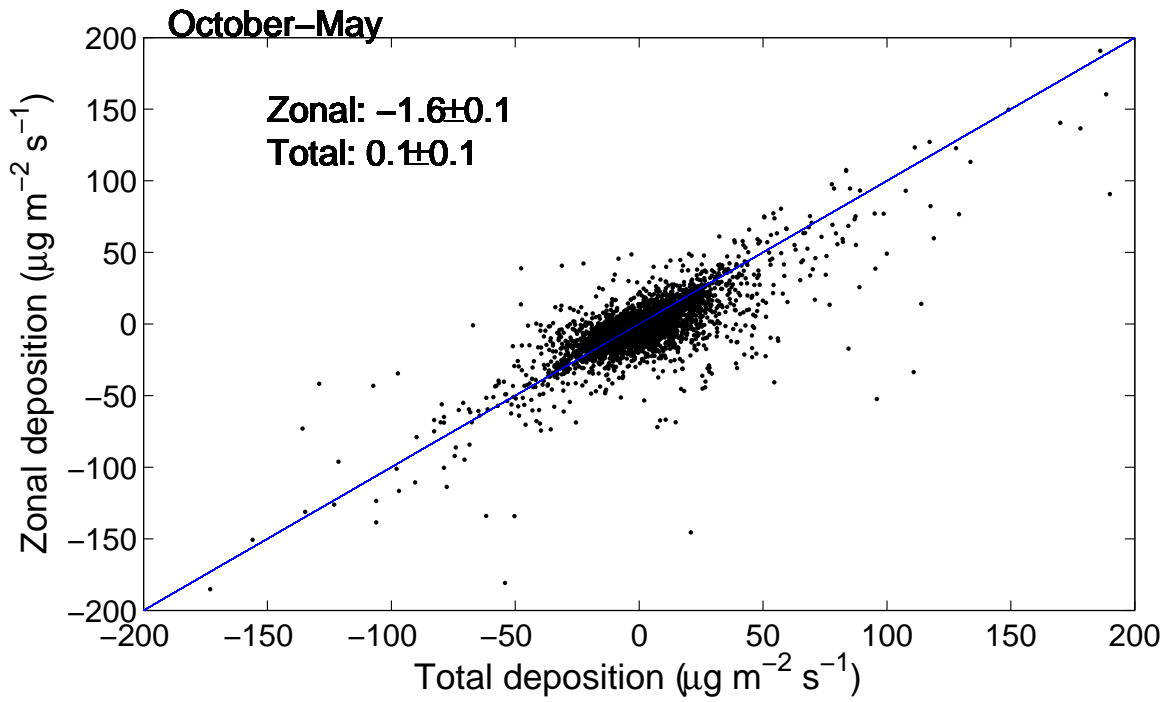
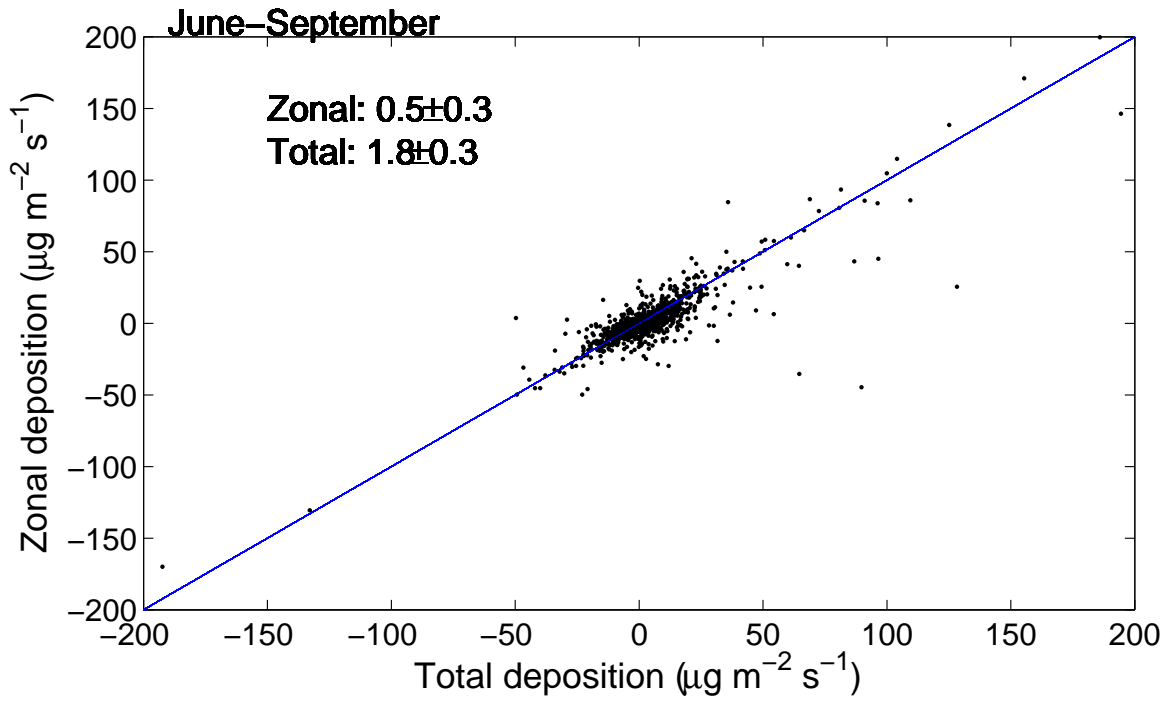
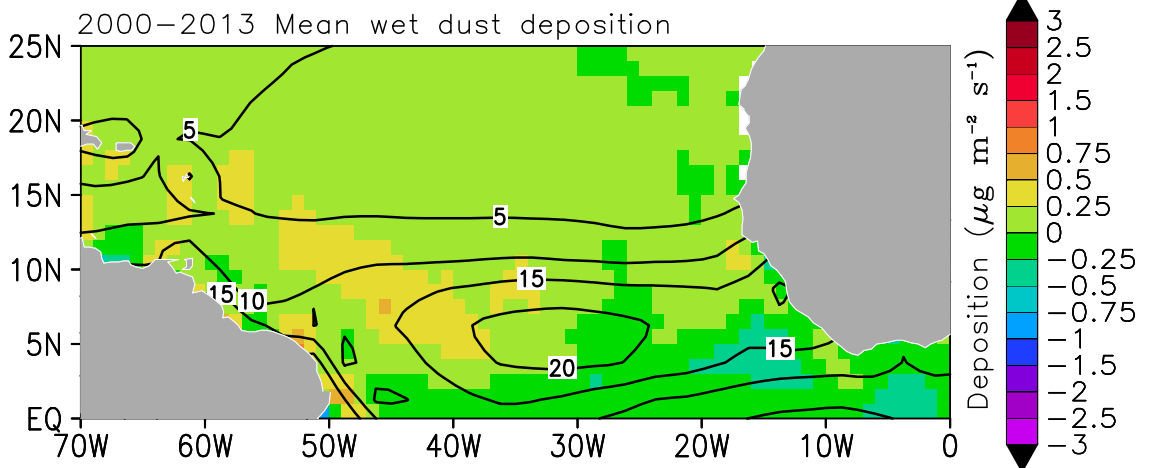
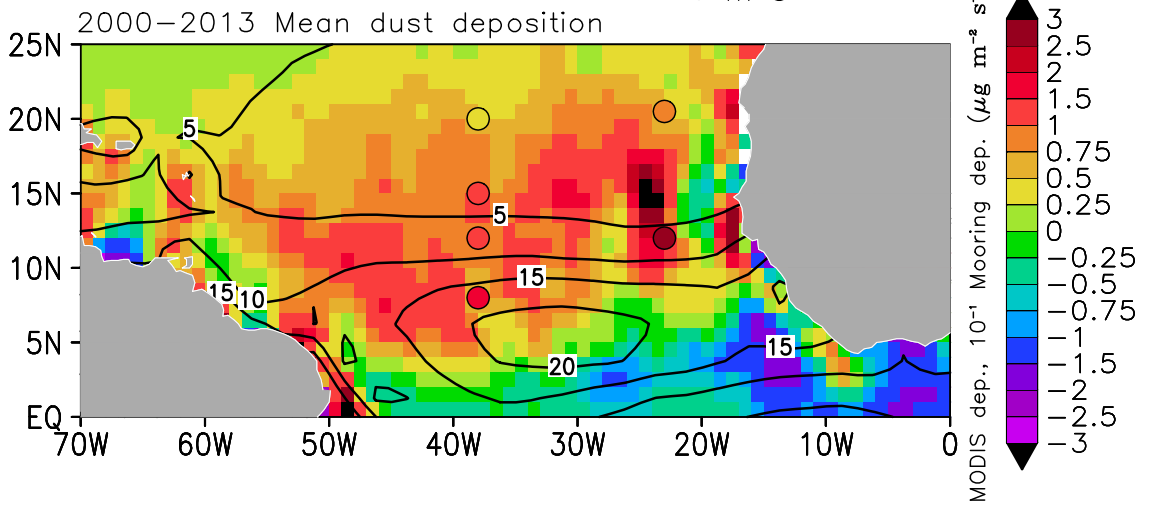
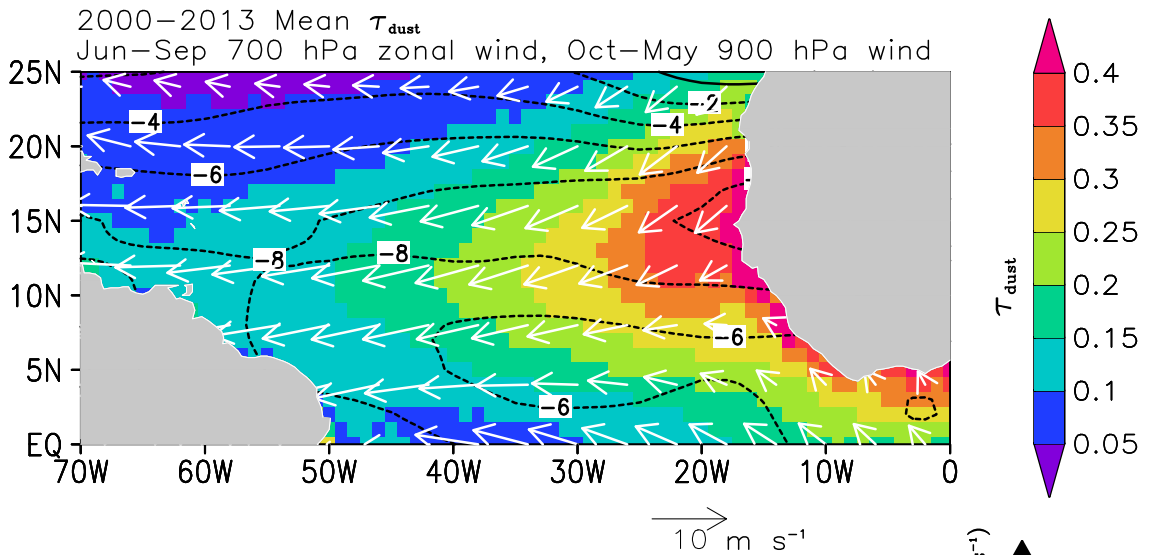


4 March 2003 τ_{dust} , 850 hPa wind

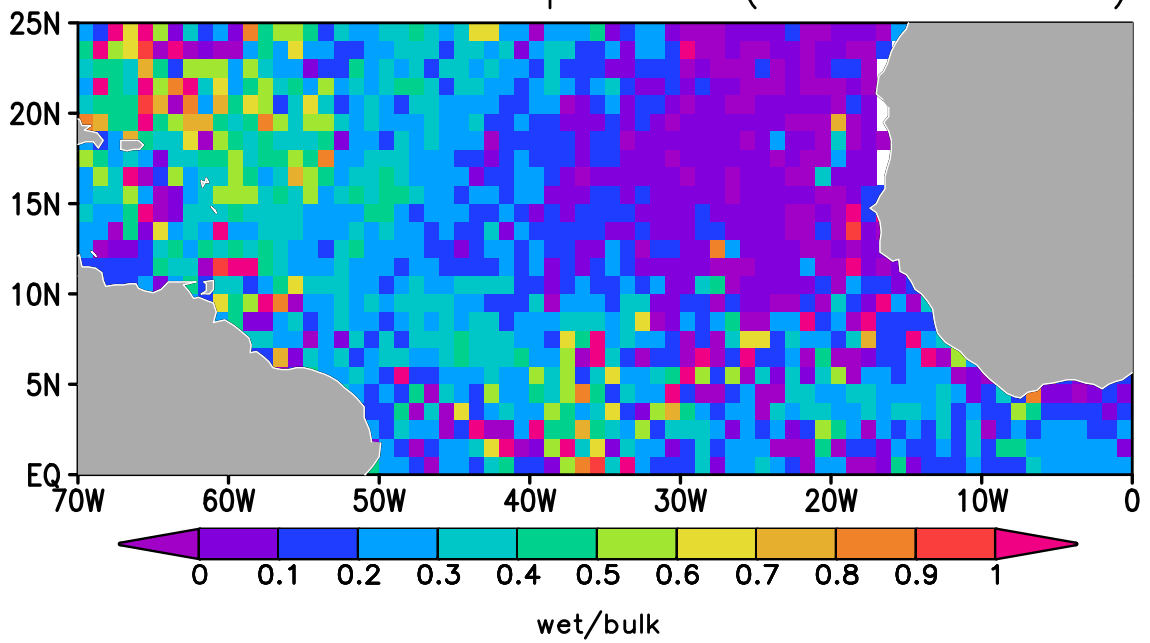


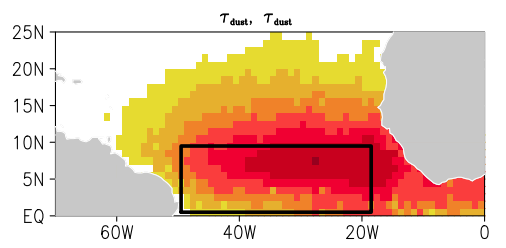
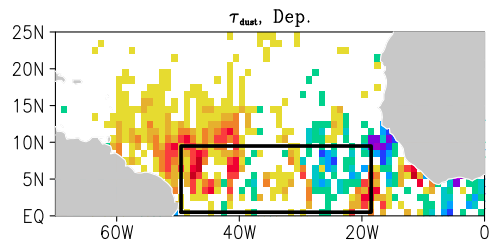
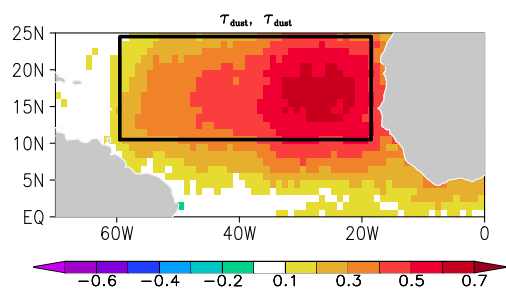
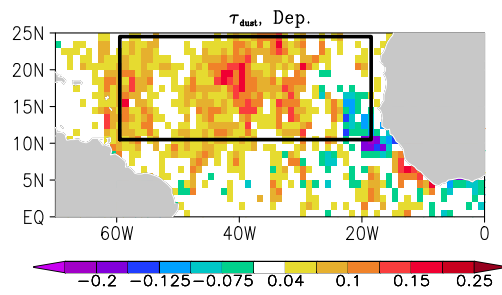


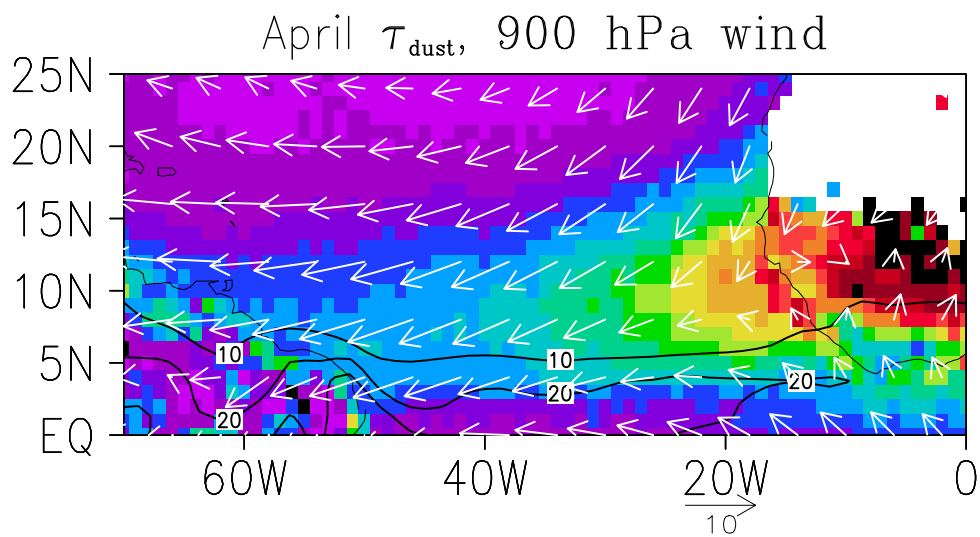
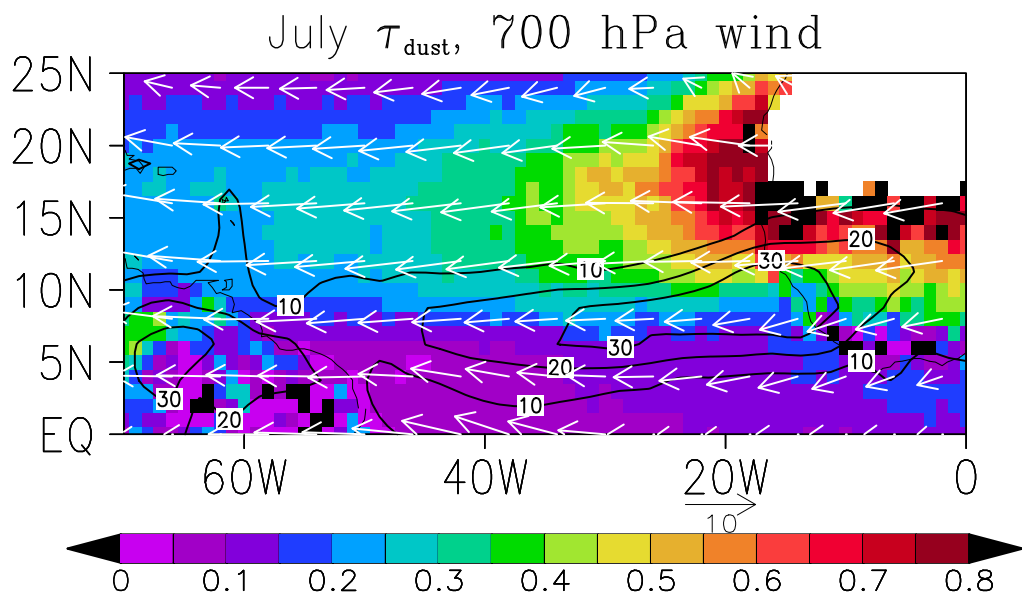


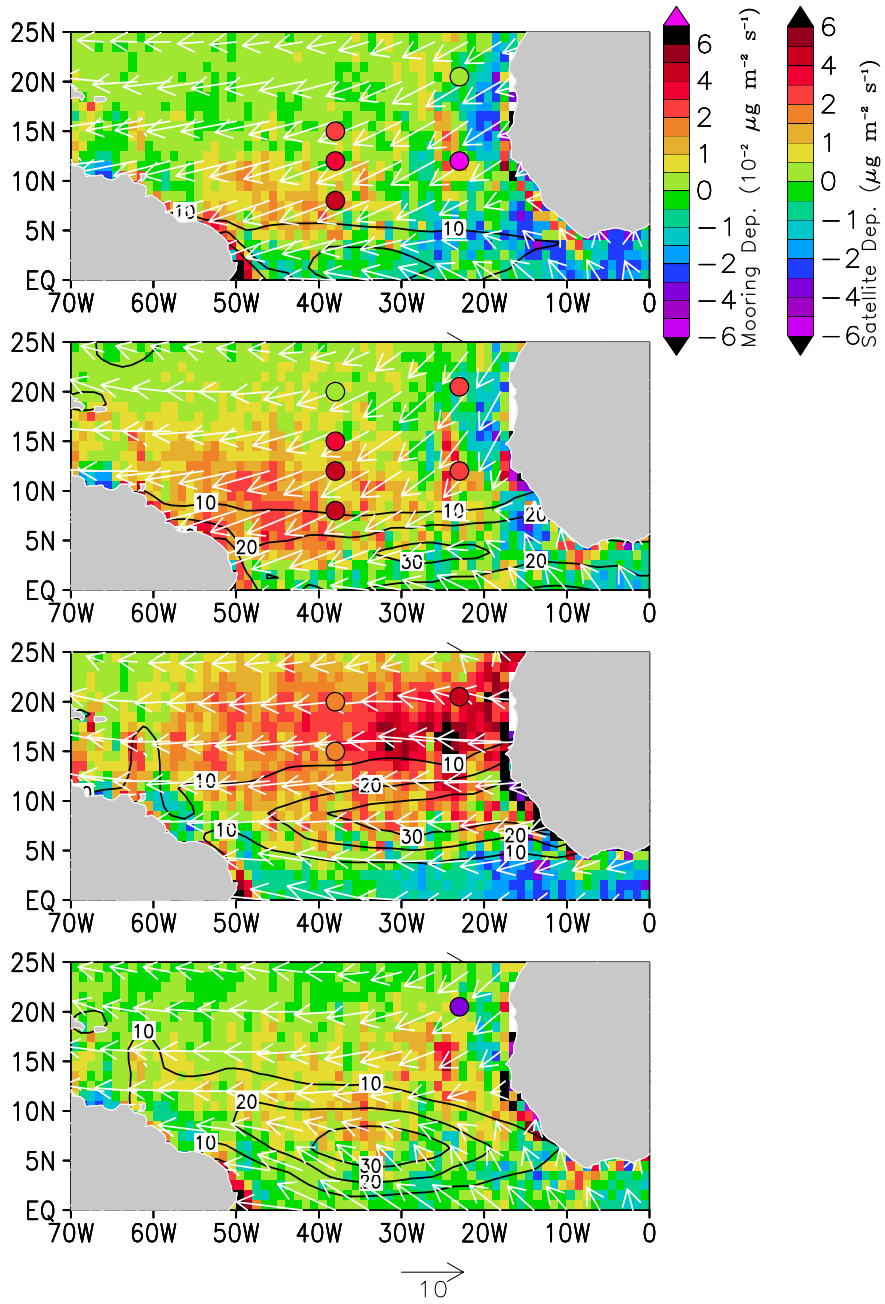


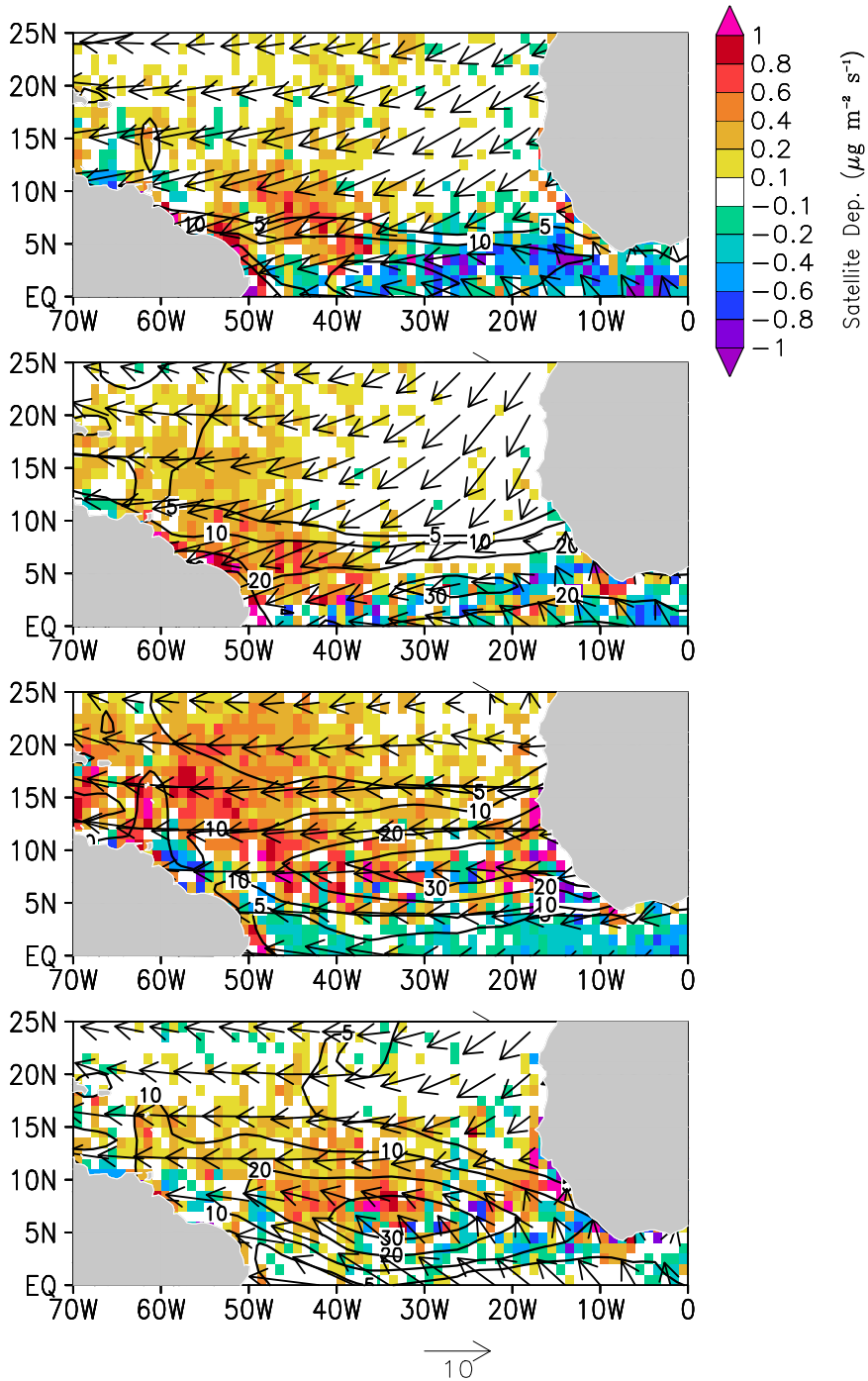
Annual mean wet deposition (fraction of bulk)

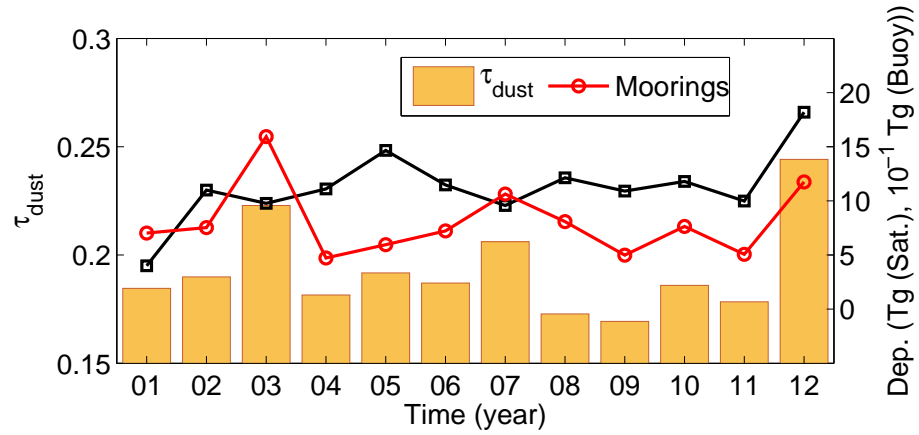
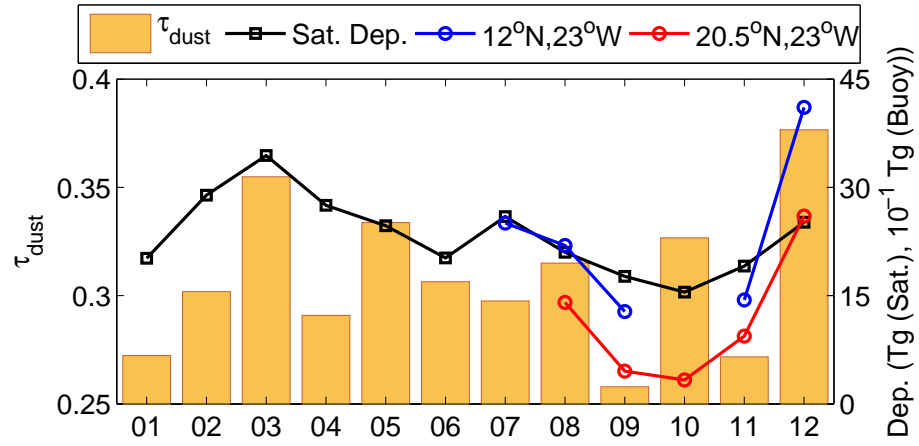
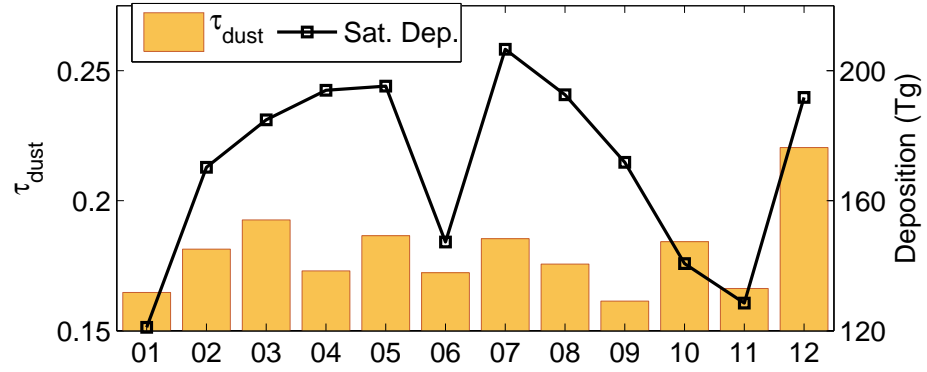


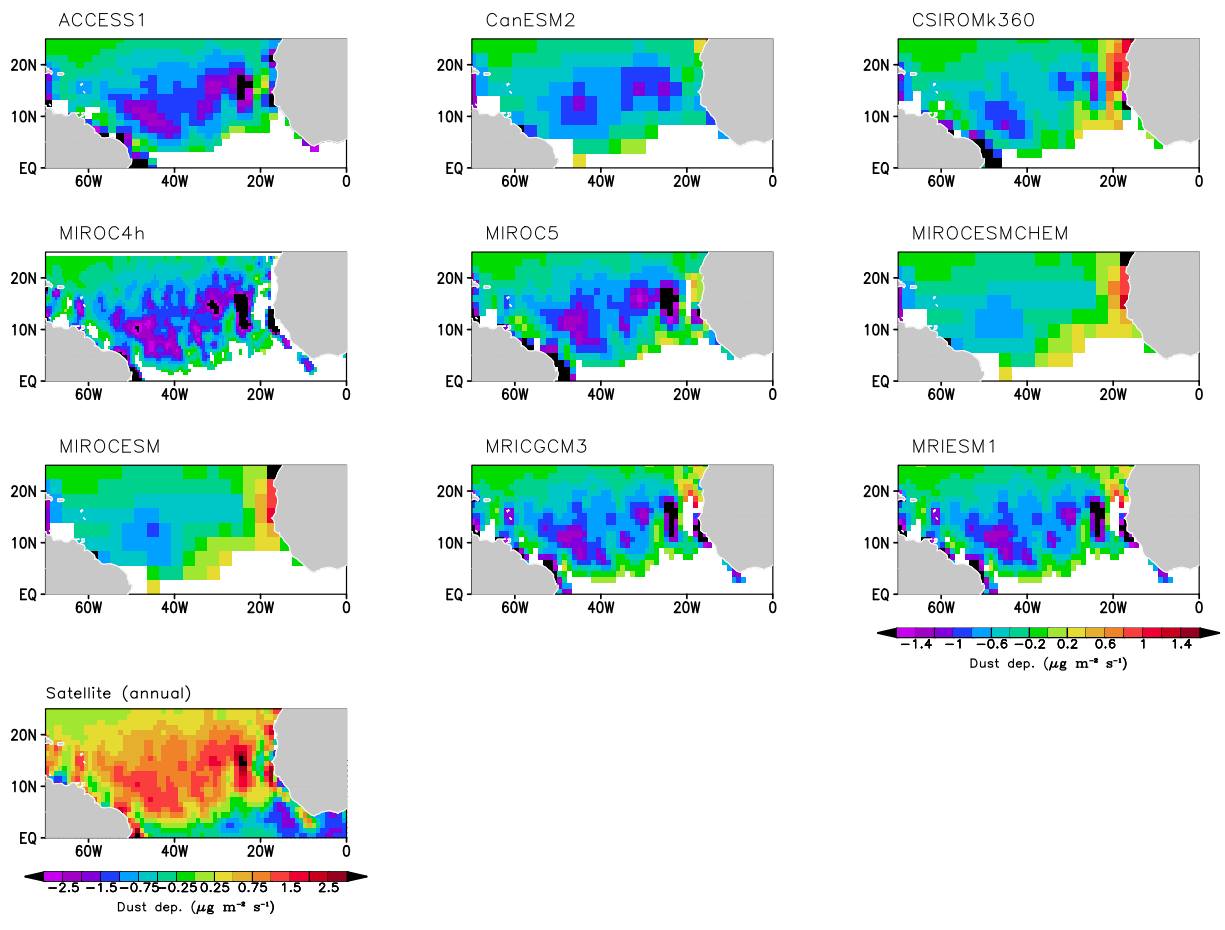


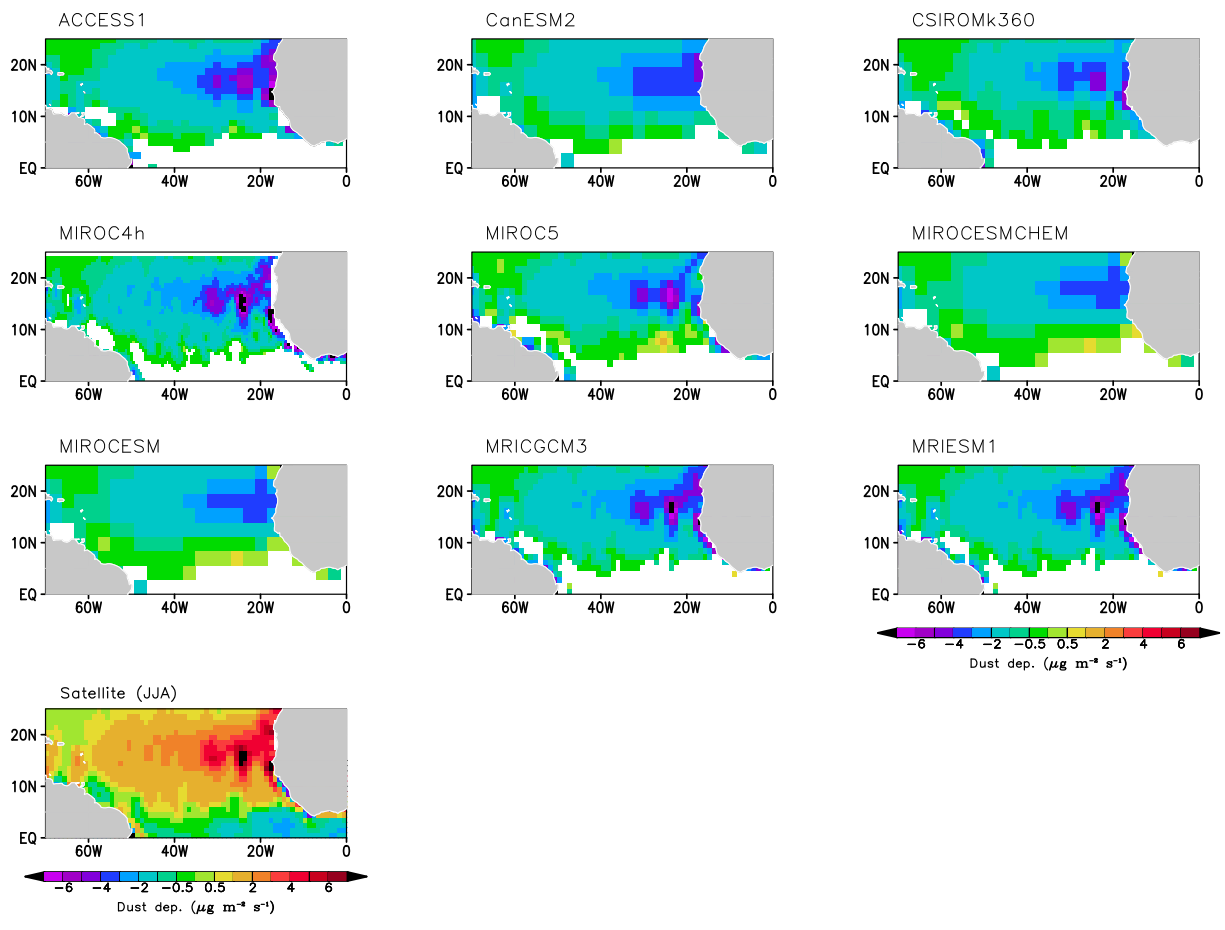


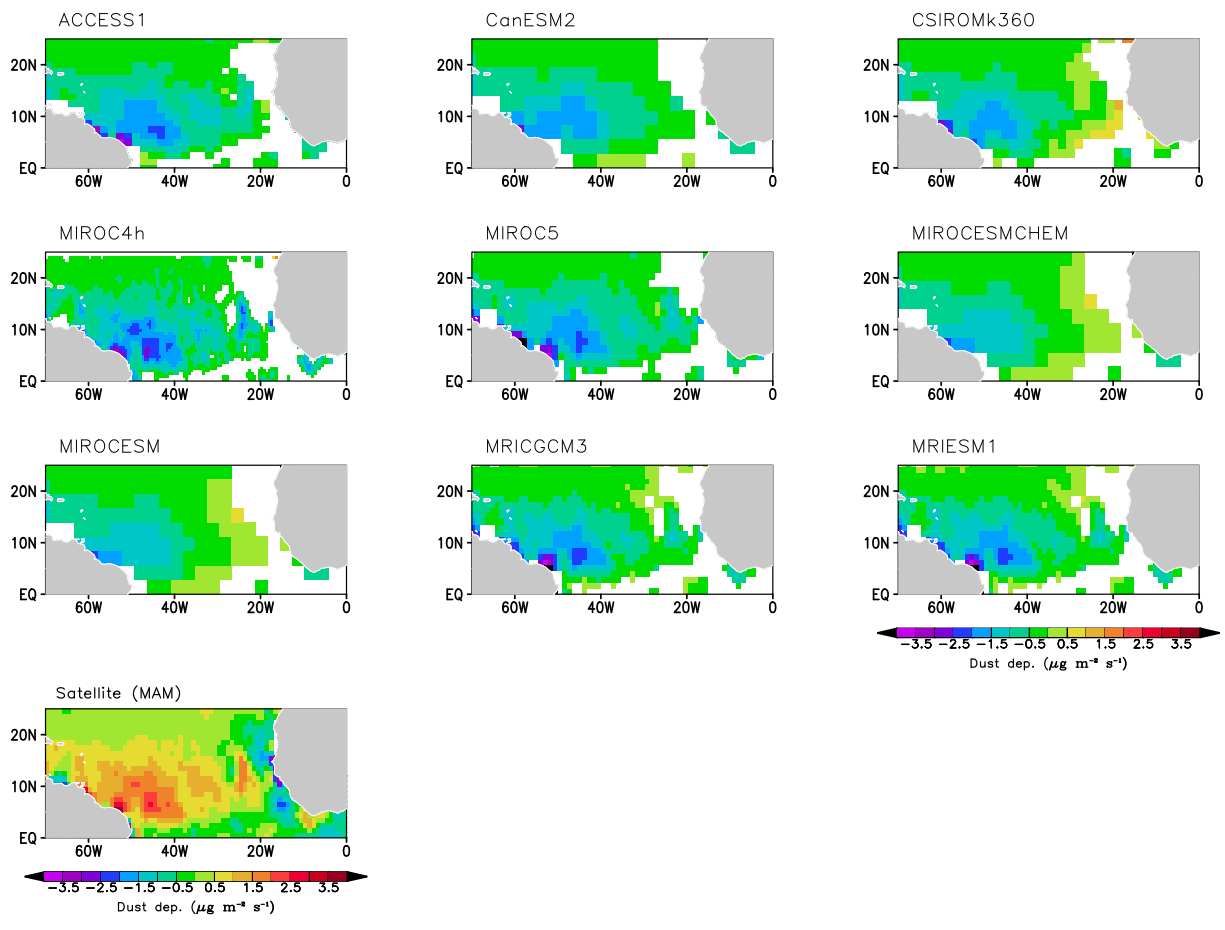


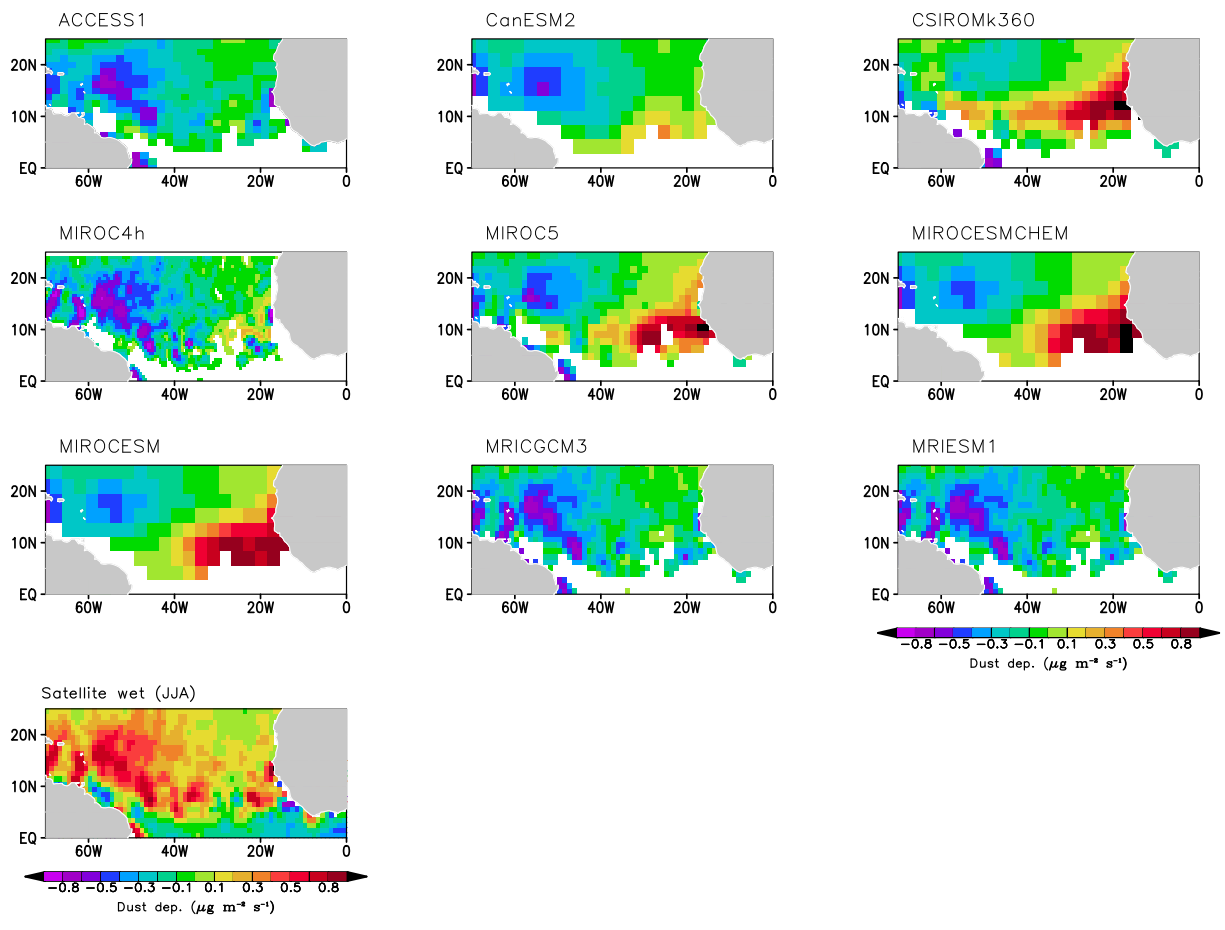


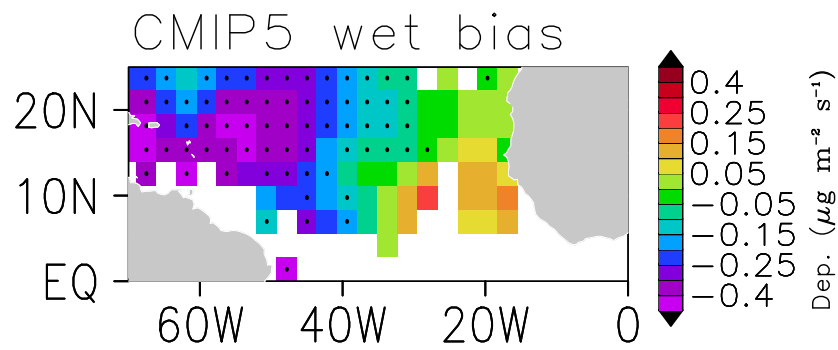
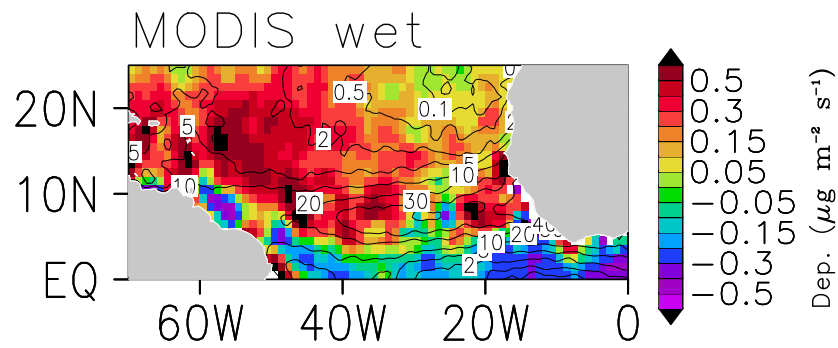
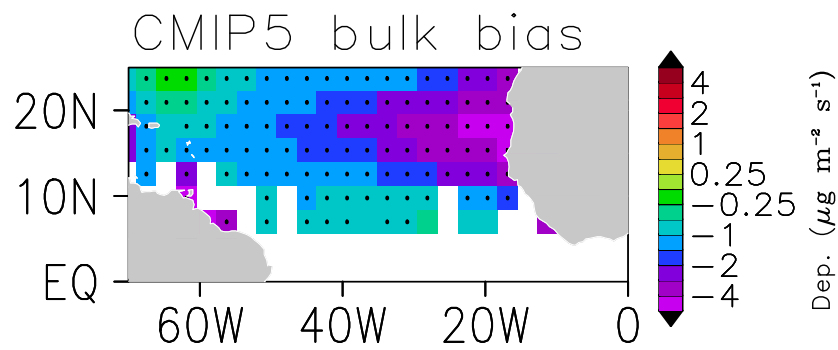
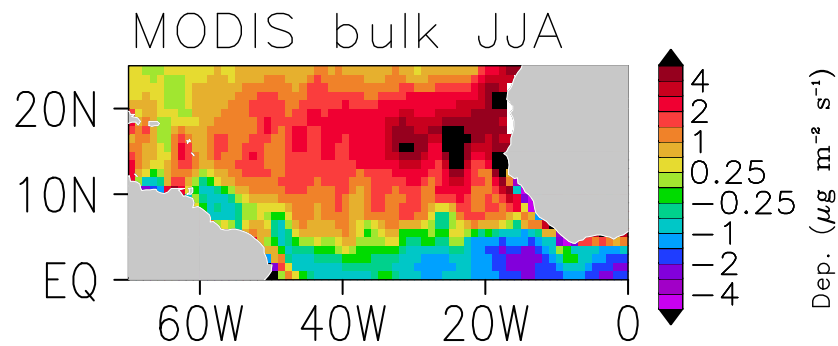


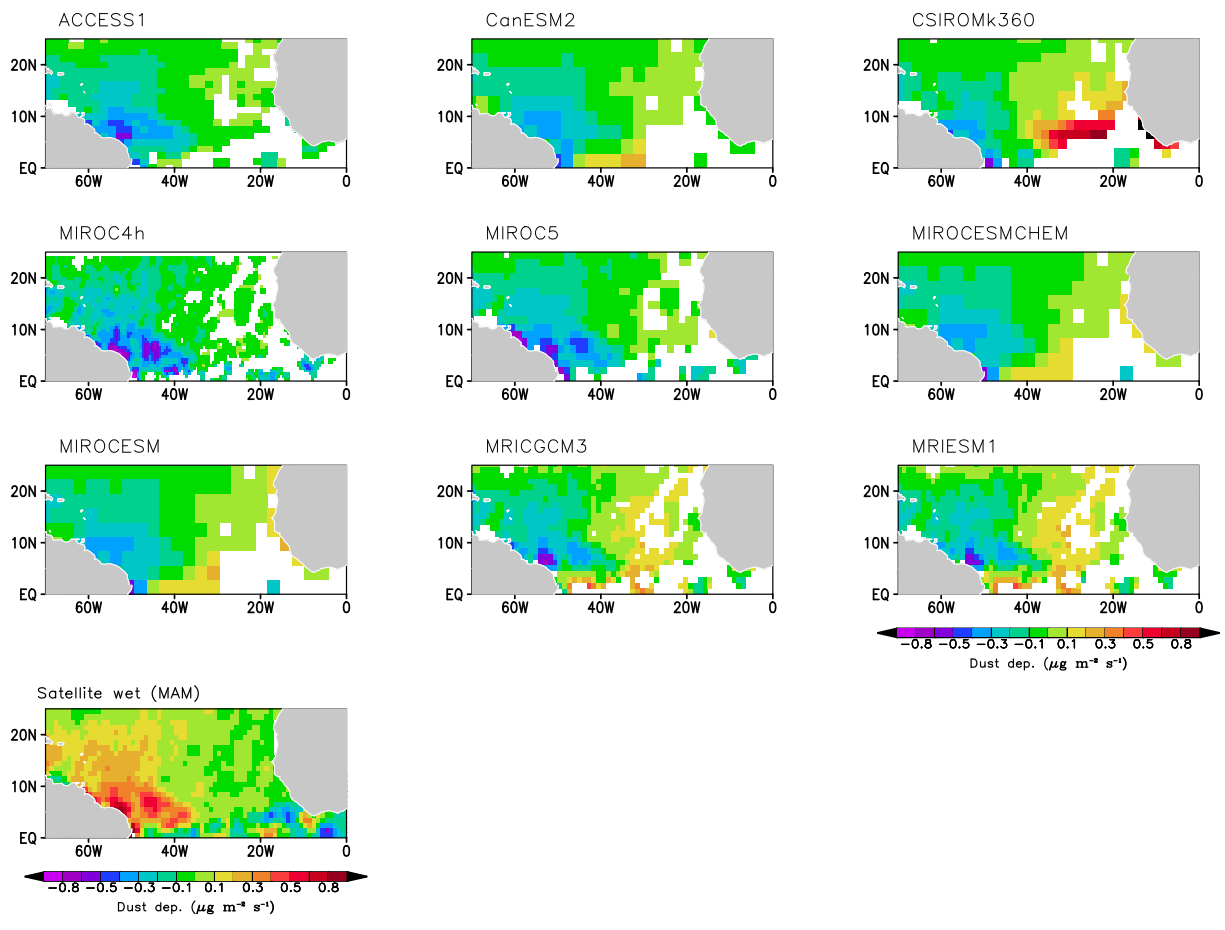


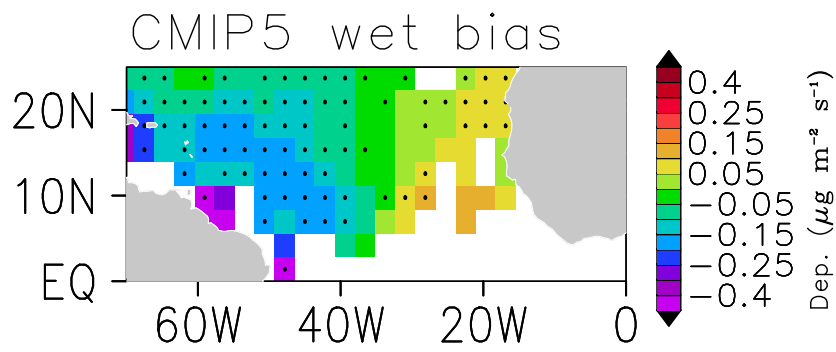
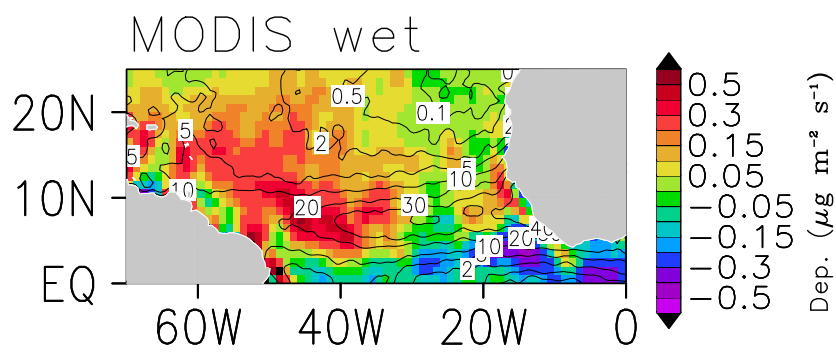
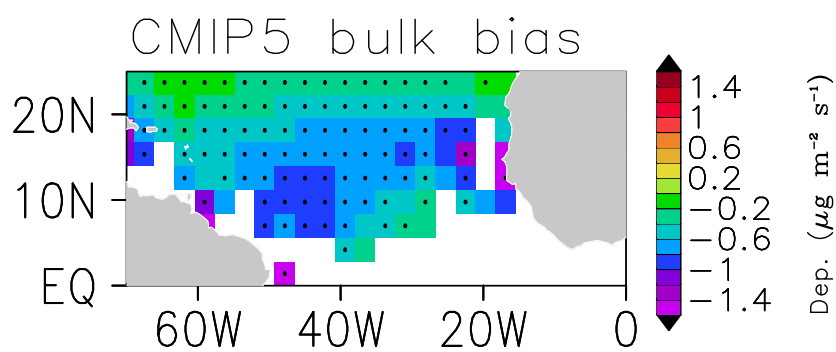
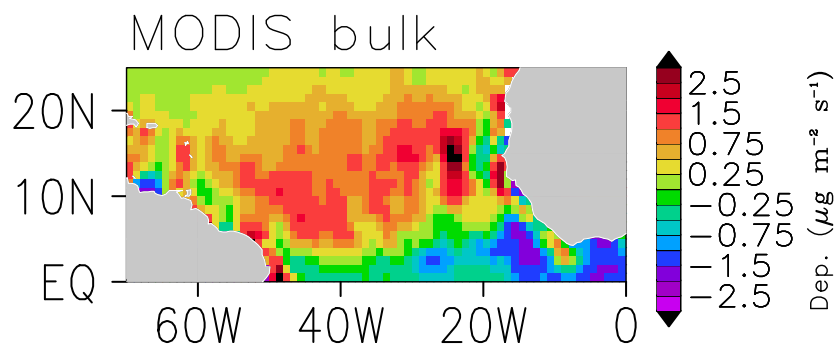


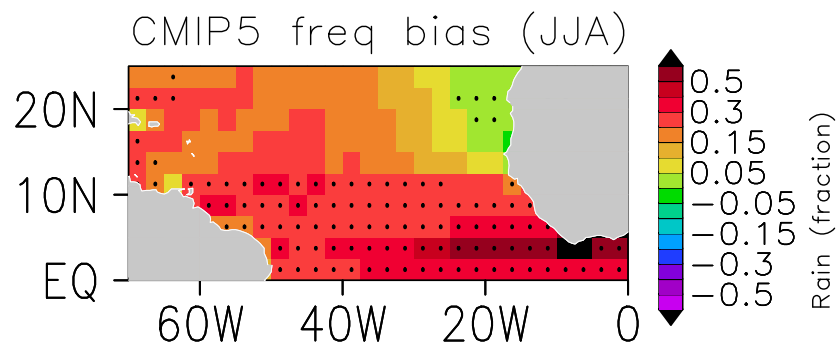
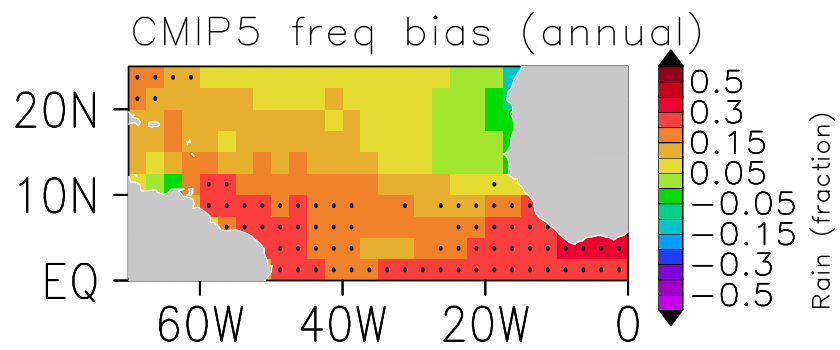
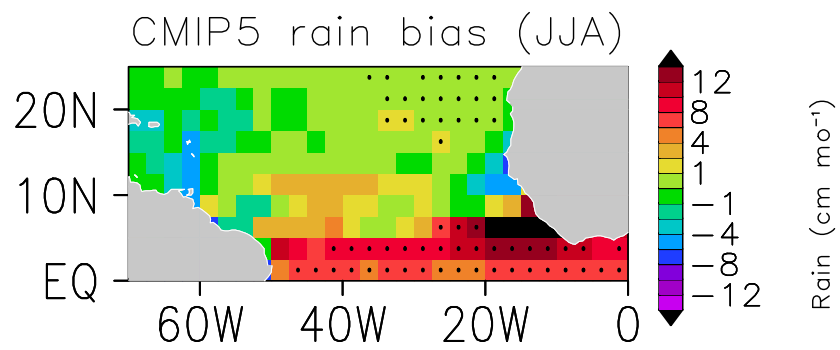
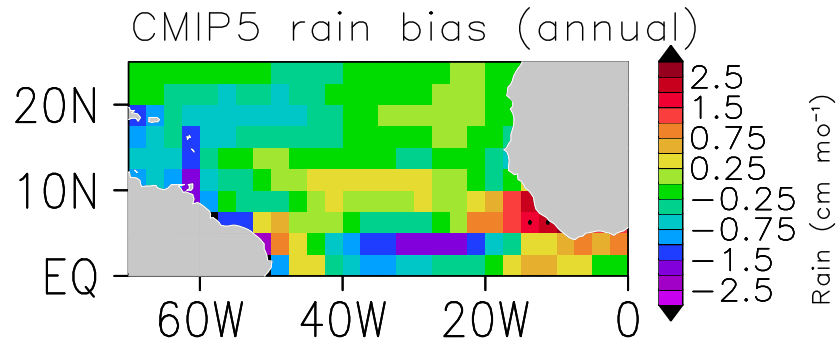


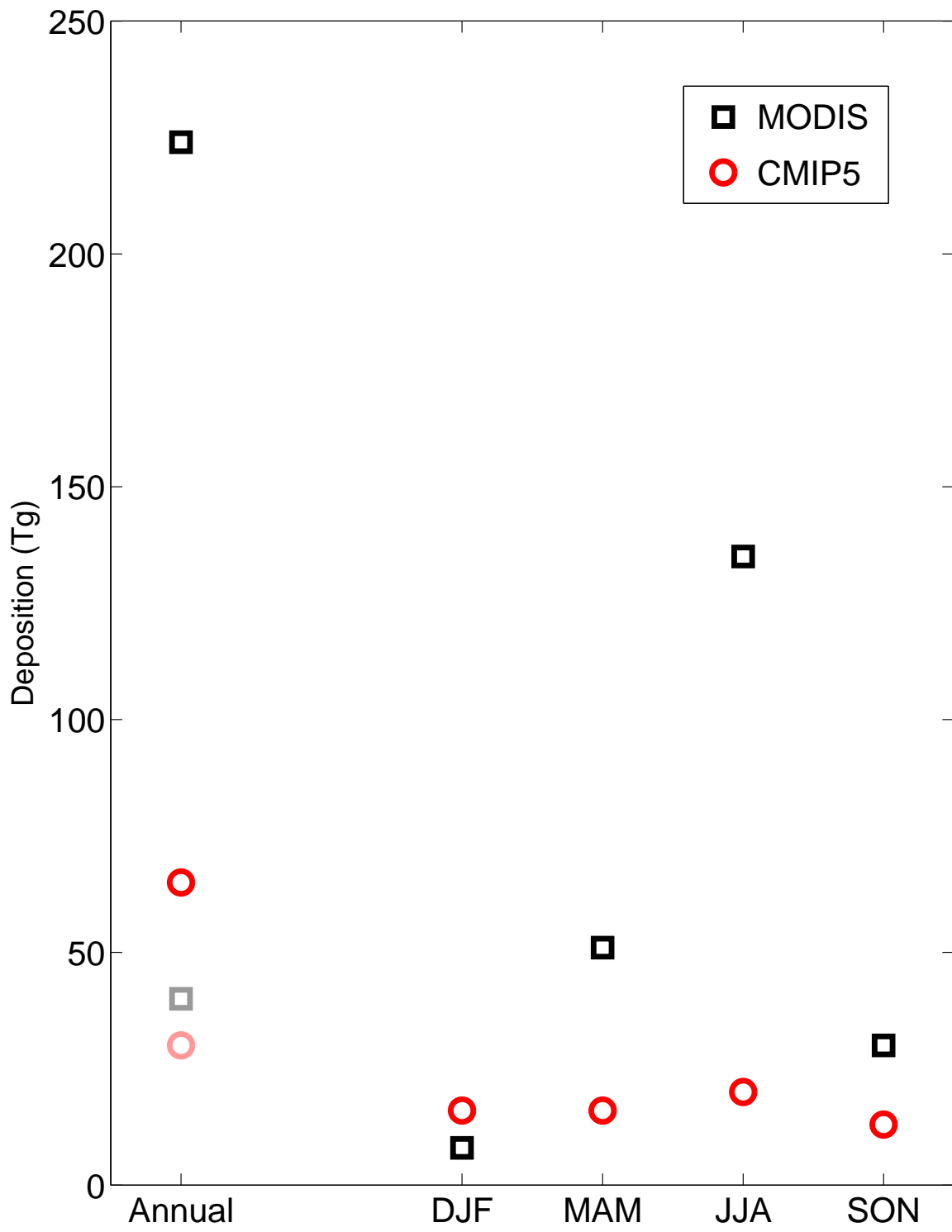












	10°N–25°N	0°–10°N	Atl. Total	Carib	Total
MODIS					
Annual bulk	164	27	191	33	224
Annual wet	24	8	32	8	40
DJF bulk	6	0	6	2	8
MAM bulk	21	17	38	13	51
JJA bulk	115	3	118	17	135
SON bulk	22	7	29	1	30
CMIP5					
Annual bulk	44	11	55	10	65
Annual wet	17	9	26	4	30
DJF bulk	12	3	15	1	16
MAM bulk	10	4	14	2	16
JJA bulk	13	2	15	5	20
SON bulk	9	2	11	2	13