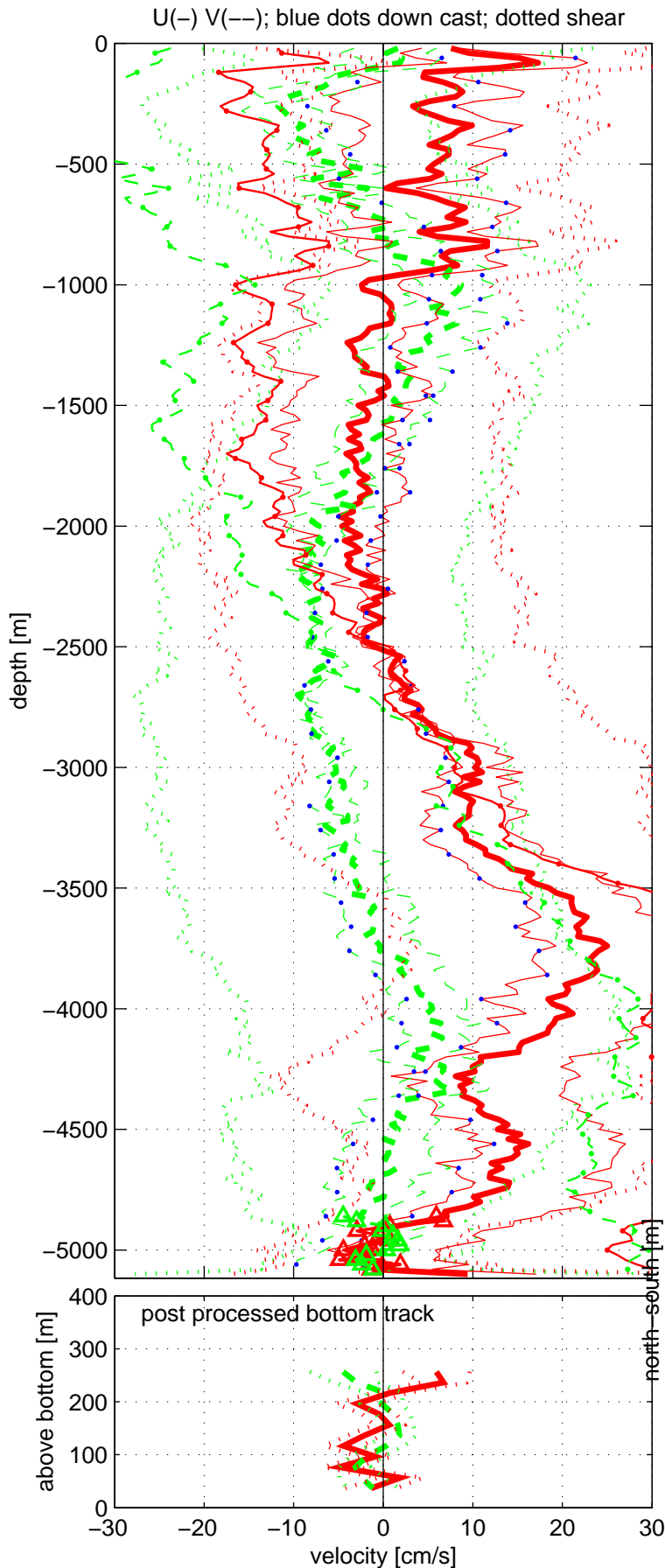


Station : AB1502_AT_SEA_008 Figure 1



Start: 26° 29.9595'N 72° 45.9827'W

18-Feb-2015 14:07:24

End: 26° 28.4645'N 72° 44.1411'W

18-Feb-2015 17:25:09

u-mean: 7 cm/s v-mean -2 cm/s

binsize do: 16 m binsize up: 8 m

S/N down : 18144 S/N up : 21584

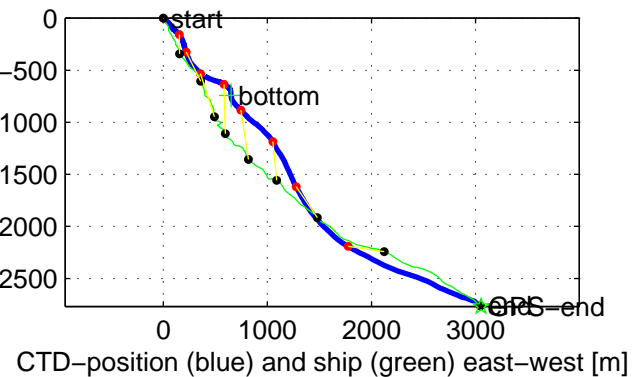
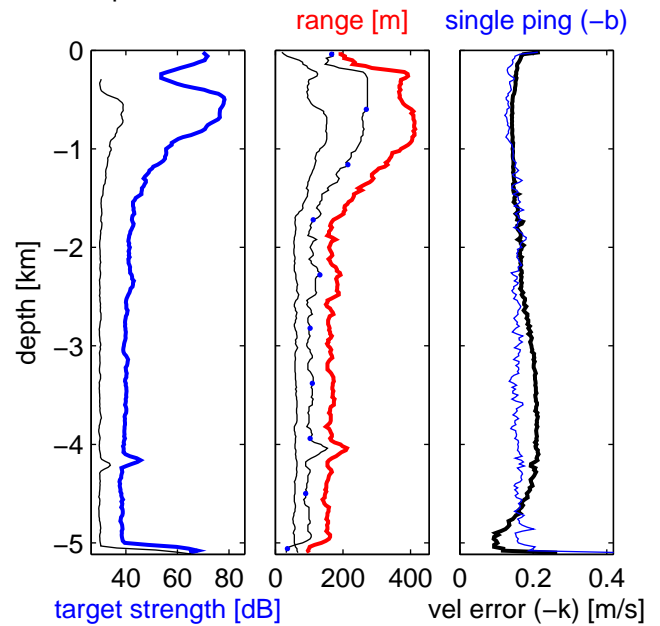
mag. deviation -10.8°

wdiff: 0.08 pglim: 0.3 elim 0.2

bar:1.0 bot:5.0

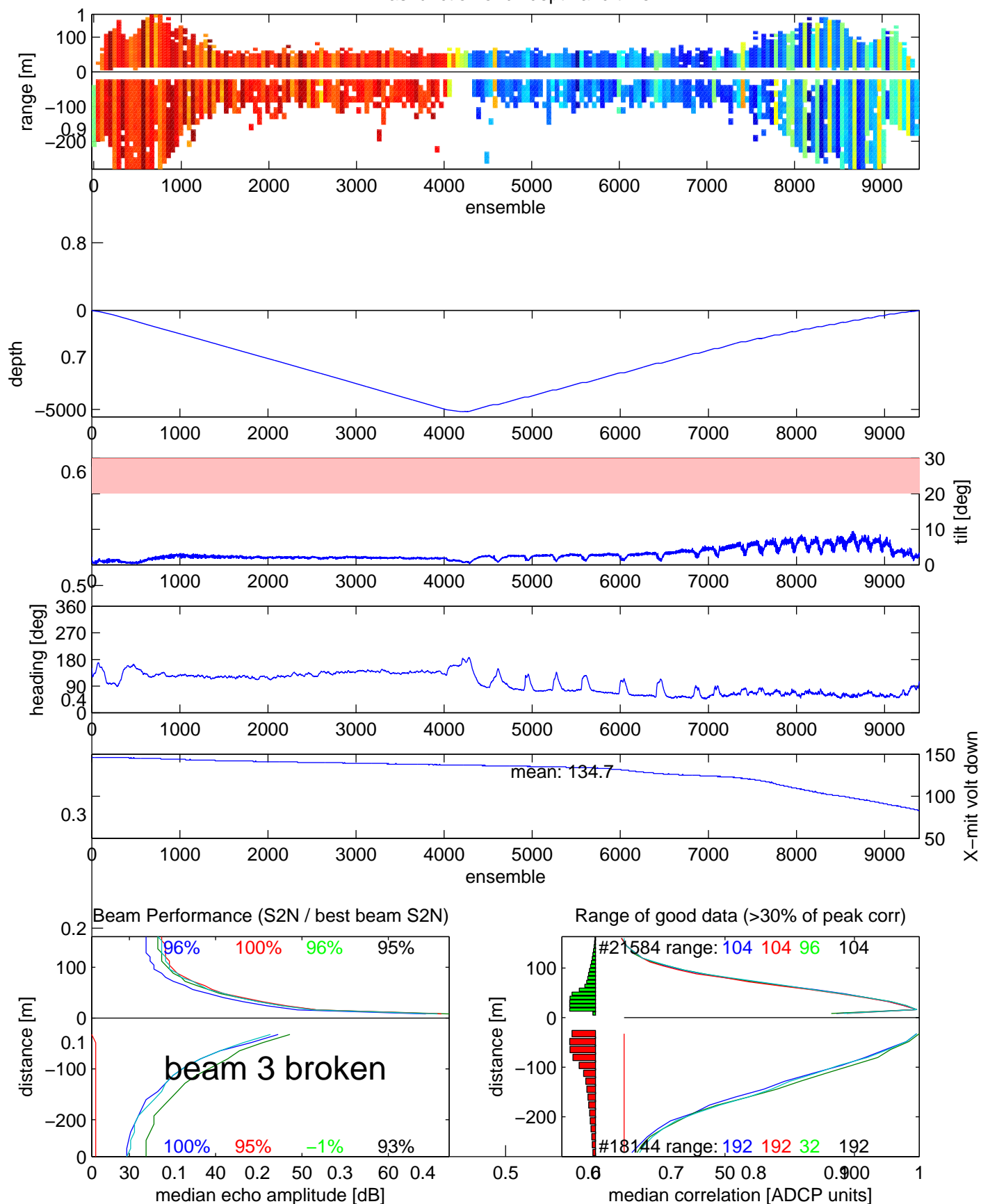
weightmin 0.1 weightpower: 1.0

max depth: 5112 m bottom: 5116 m

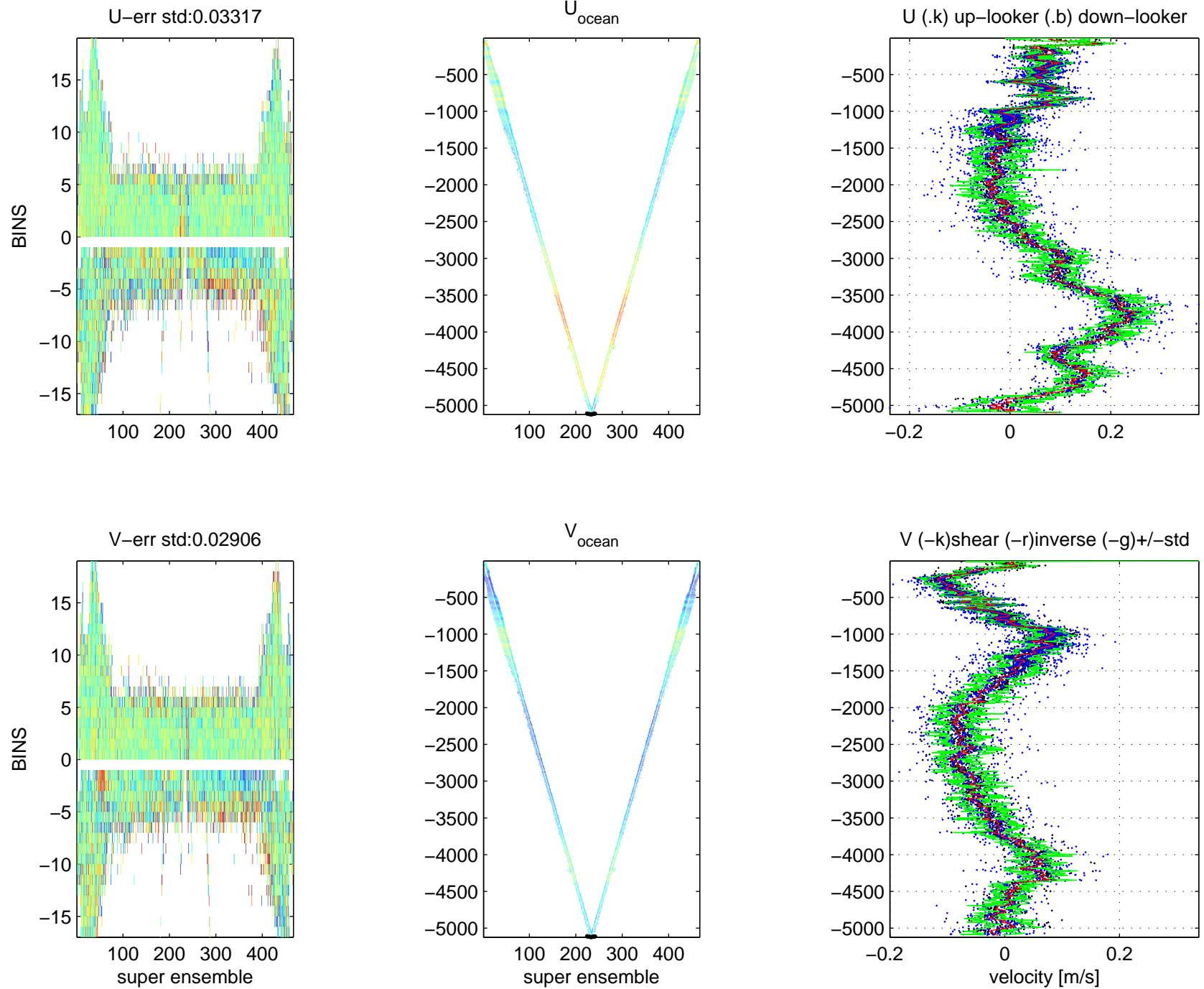


AB1502_AT_SEA_008 Figure 2

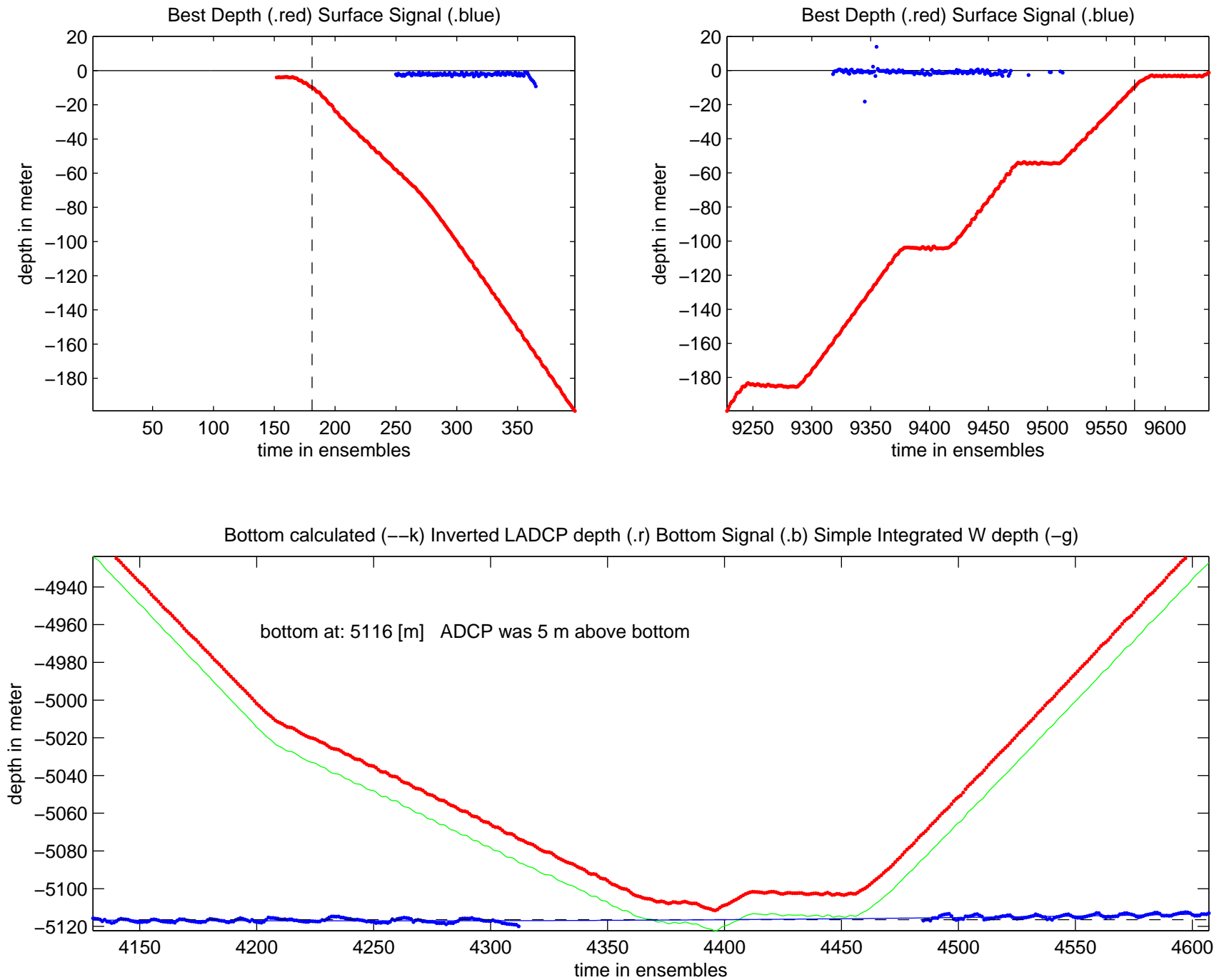
W as function of bindepth and time



AB1502_AT_SEA_008 Figure 3

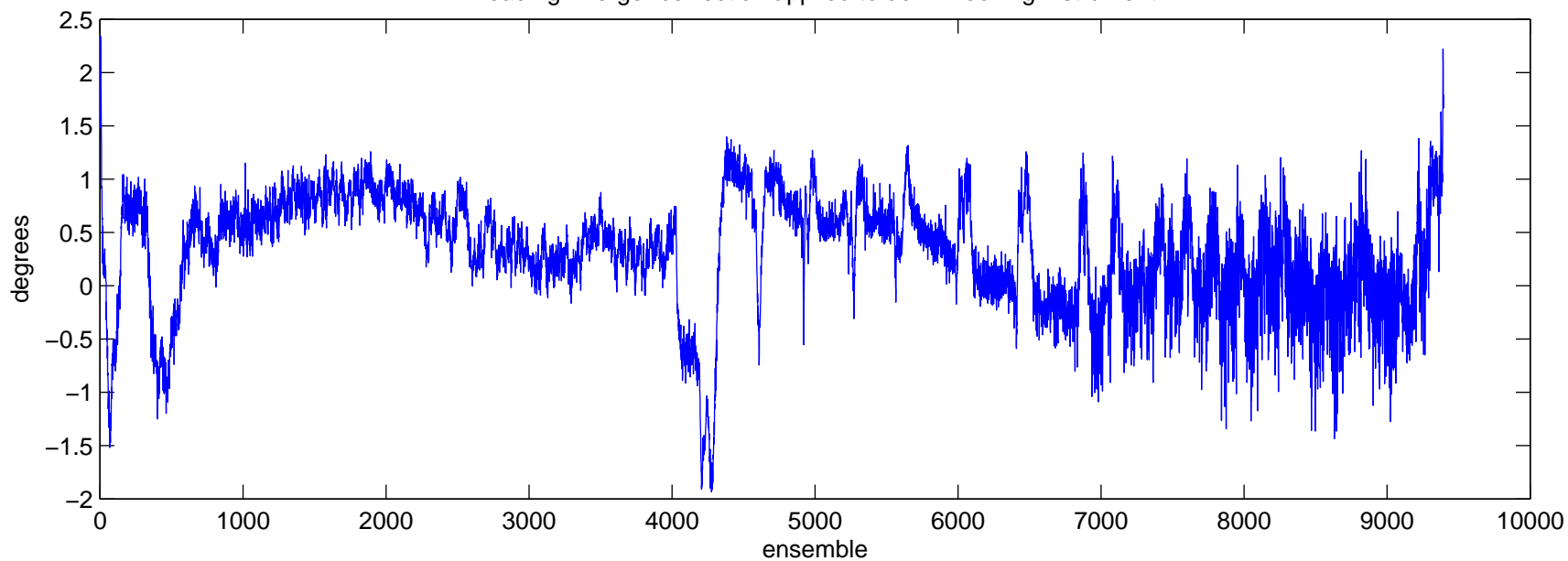


AB1502_AT_SEA_008 Figure 4

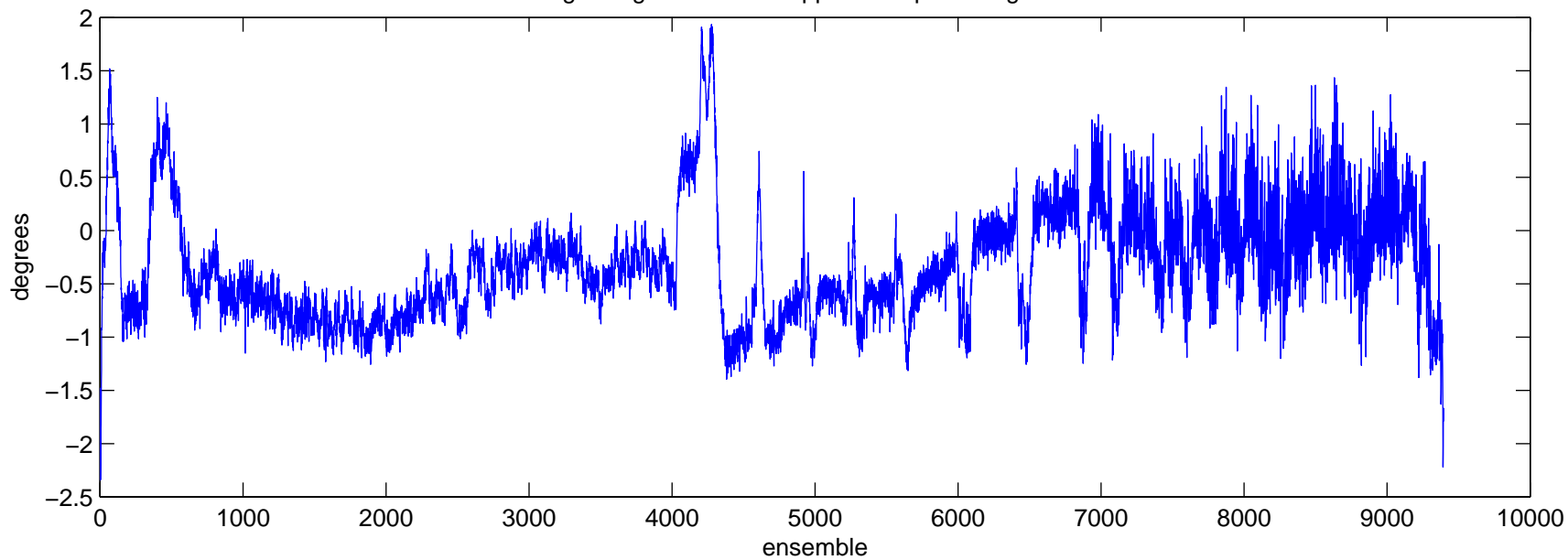


AB1502_AT_SEA_008 Figure 5

heading-merger correction applied to down-looking instrument

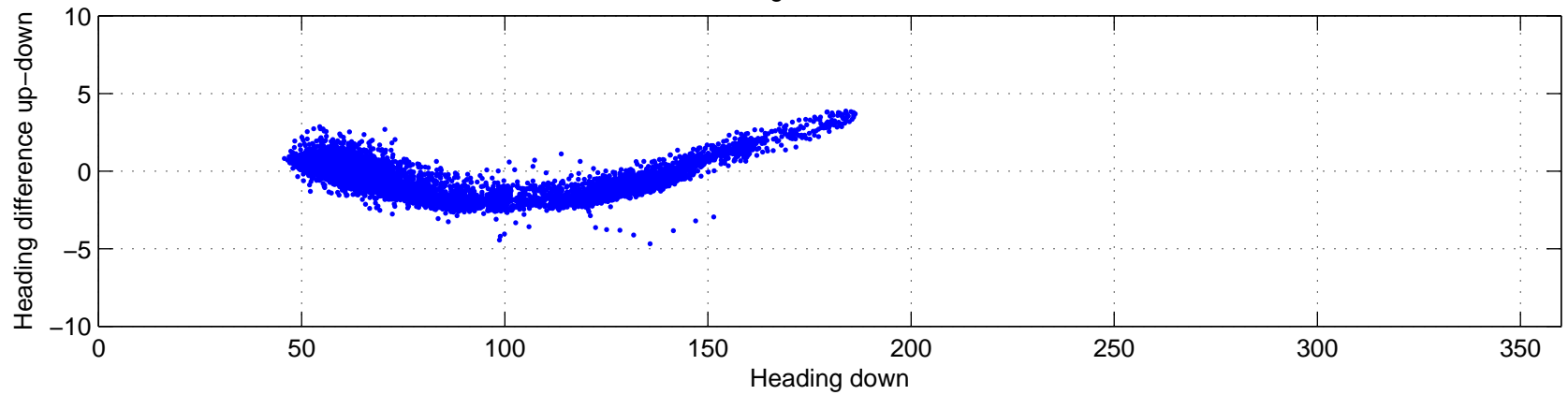


heading-merger correction applied to up-looking instrument

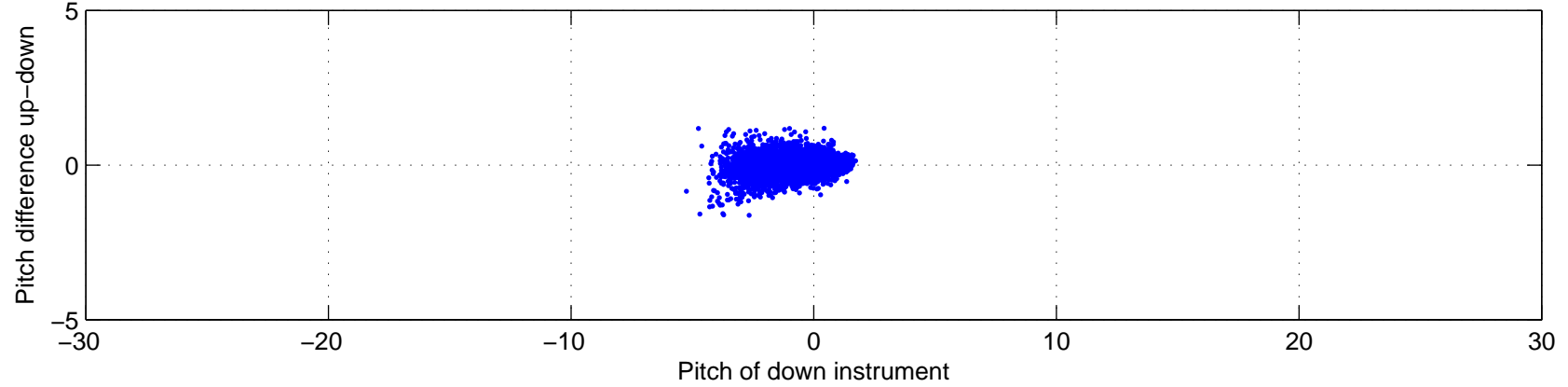


AB1502_AT_SEA_008 Figure 6

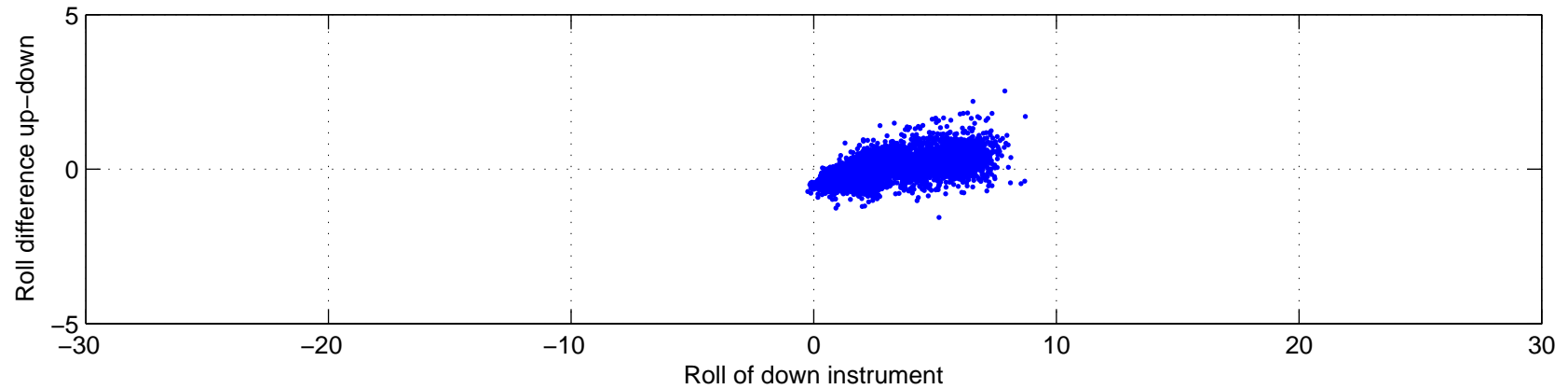
Heading offset : -94.0025



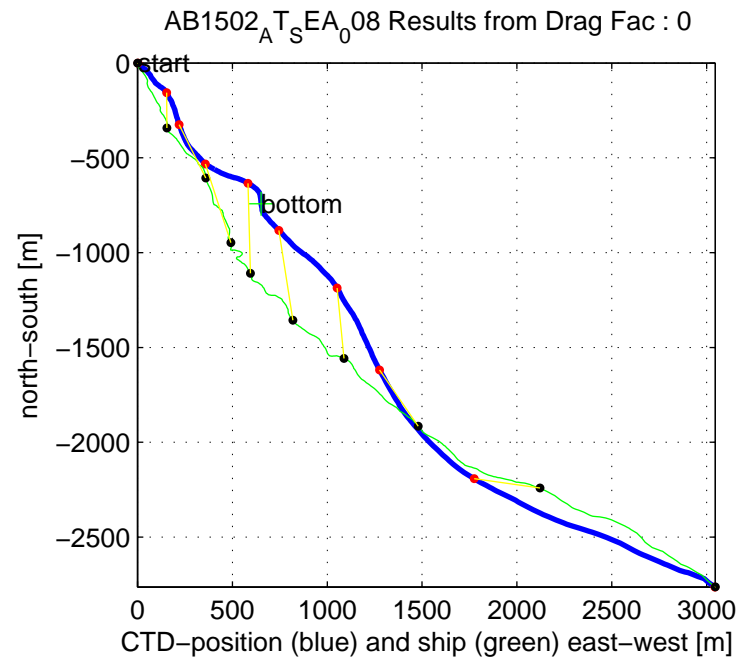
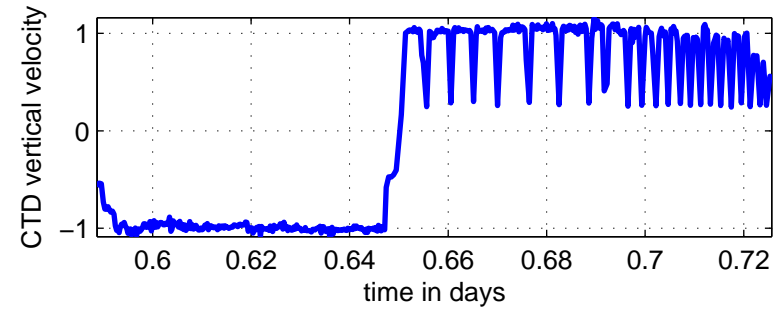
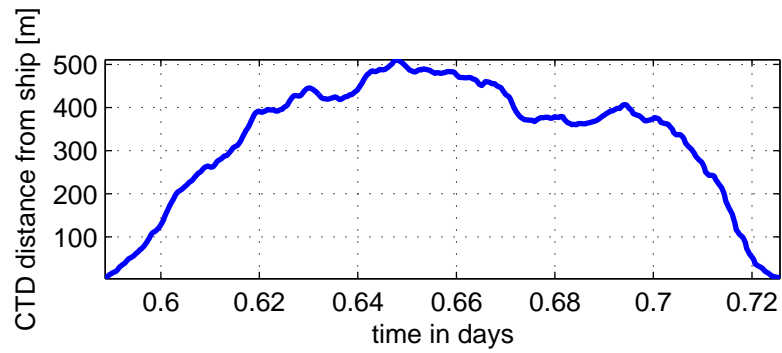
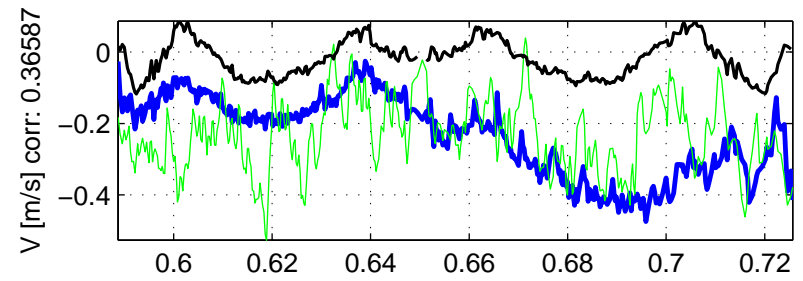
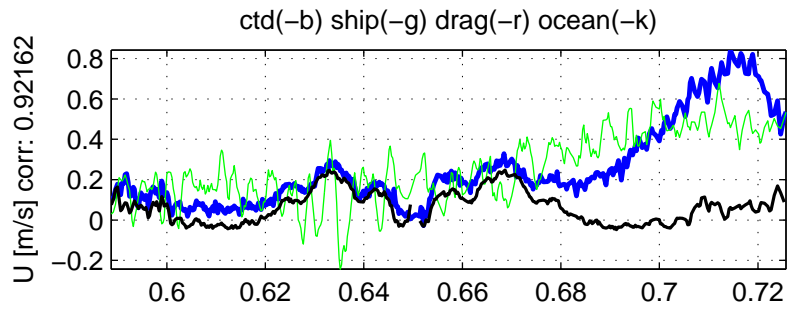
Pitch offset : 0.62554



Roll offset : 0.99932

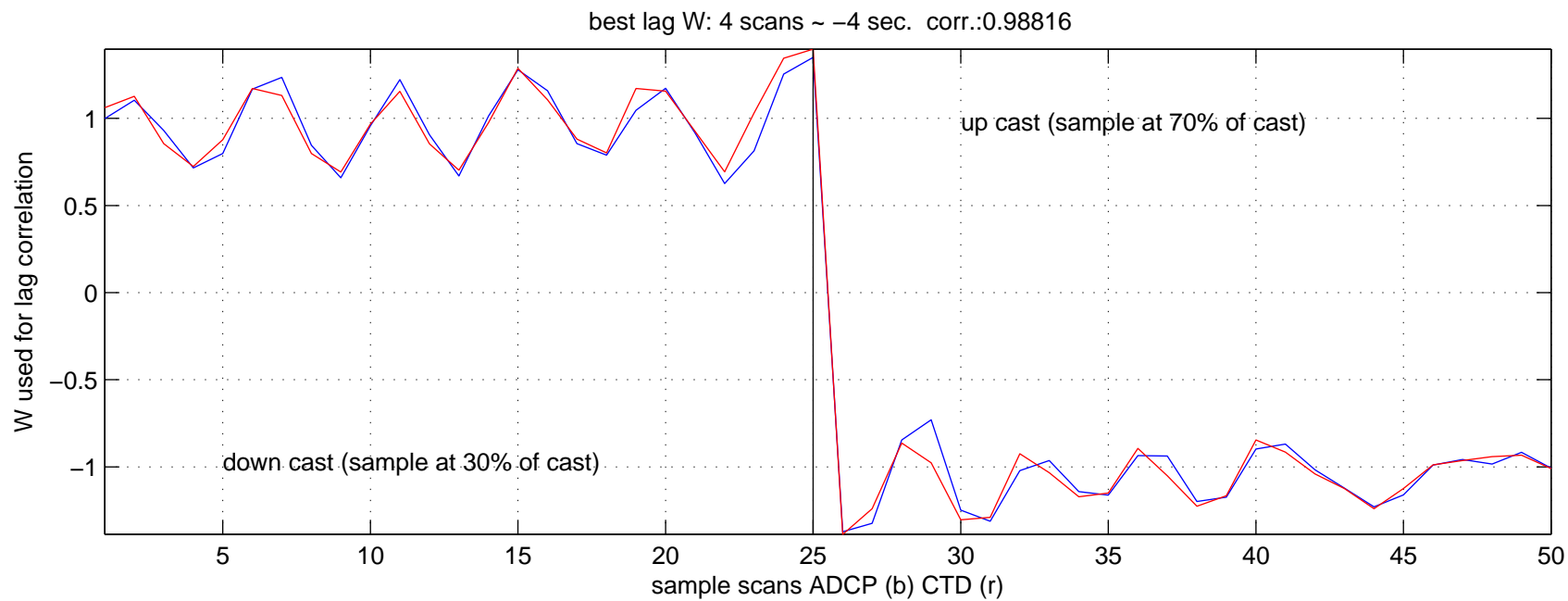
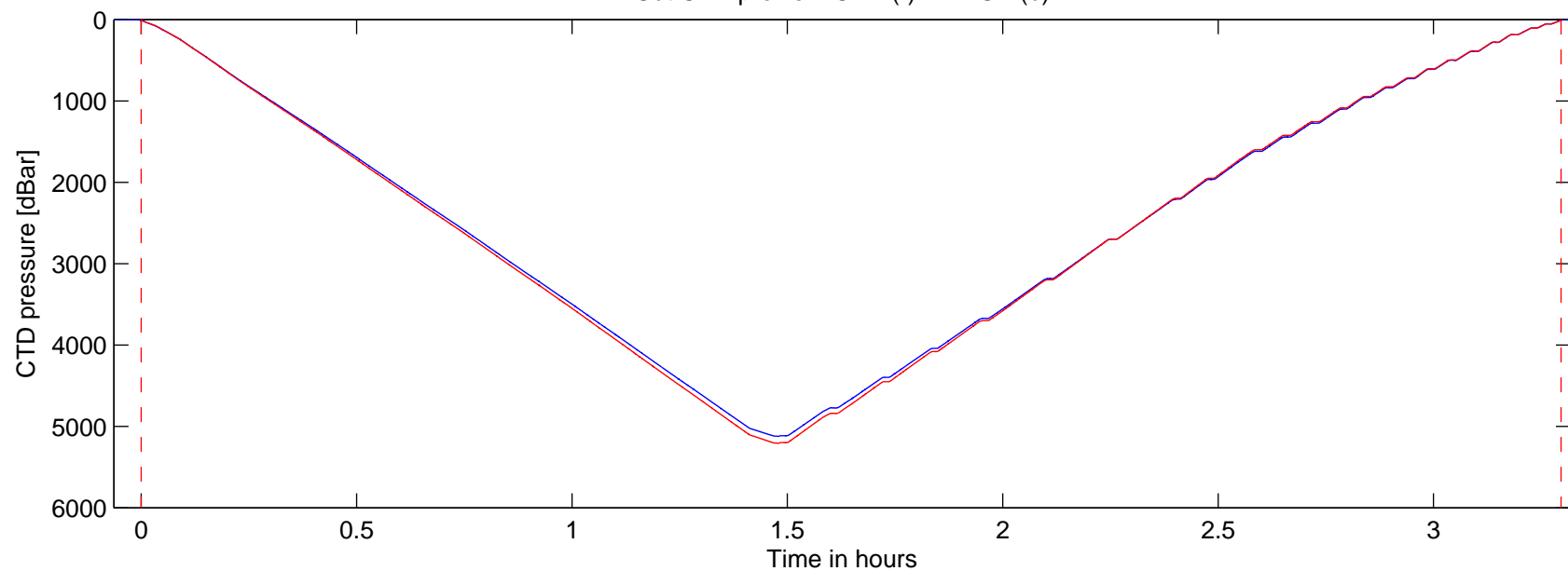


AB1502_AT_SEA_008 Figure 7



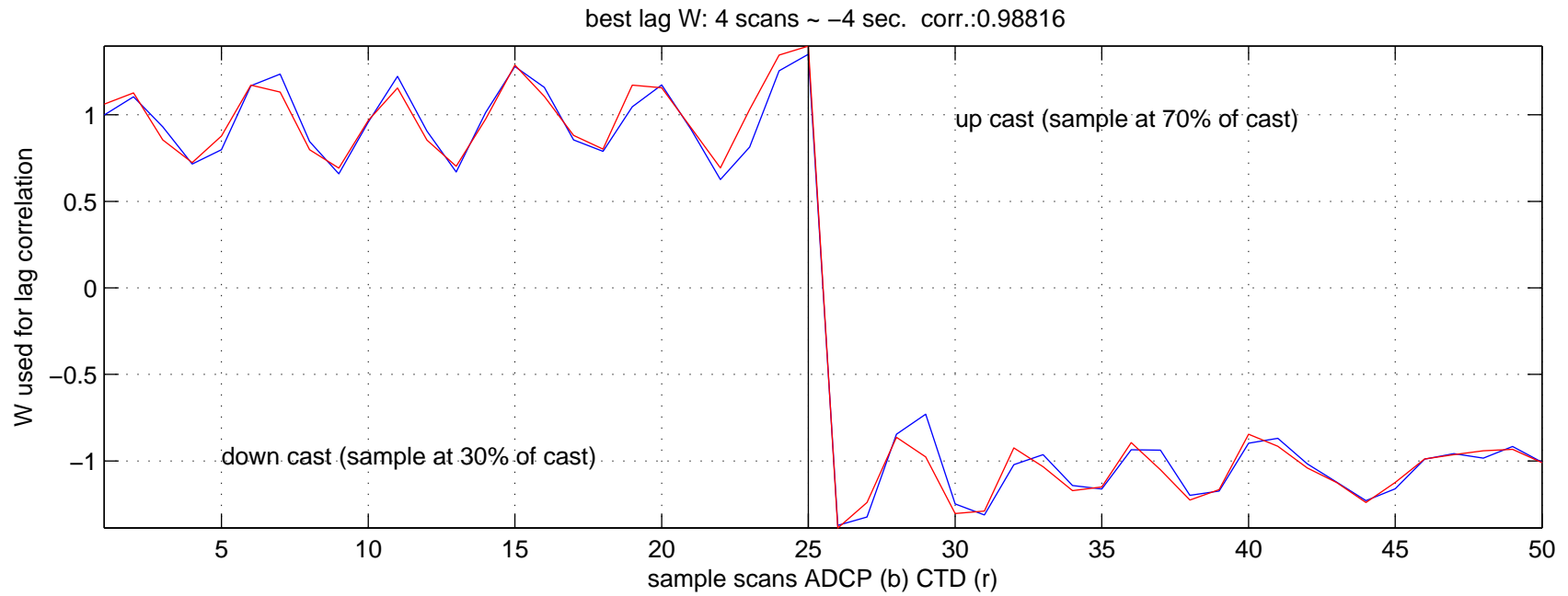
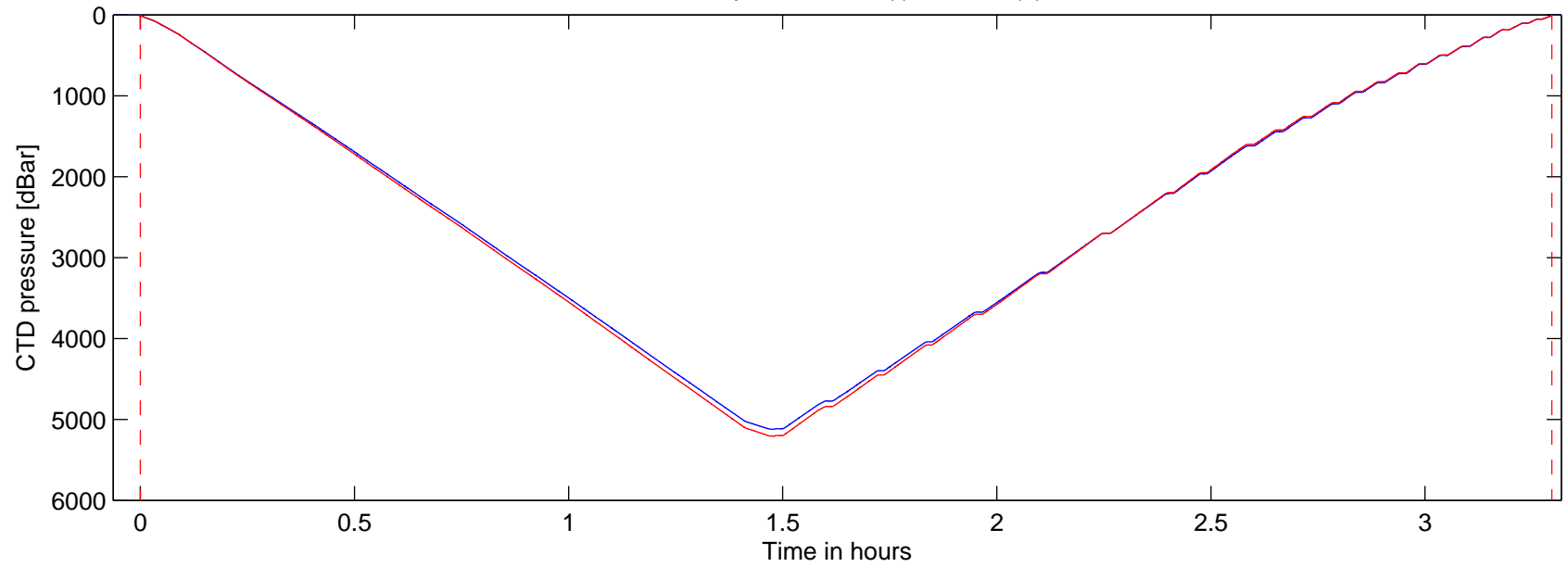
AB1502_AT_SEA_008 Figure 8

Cut CTD profile CTD (r) LADCP (b)



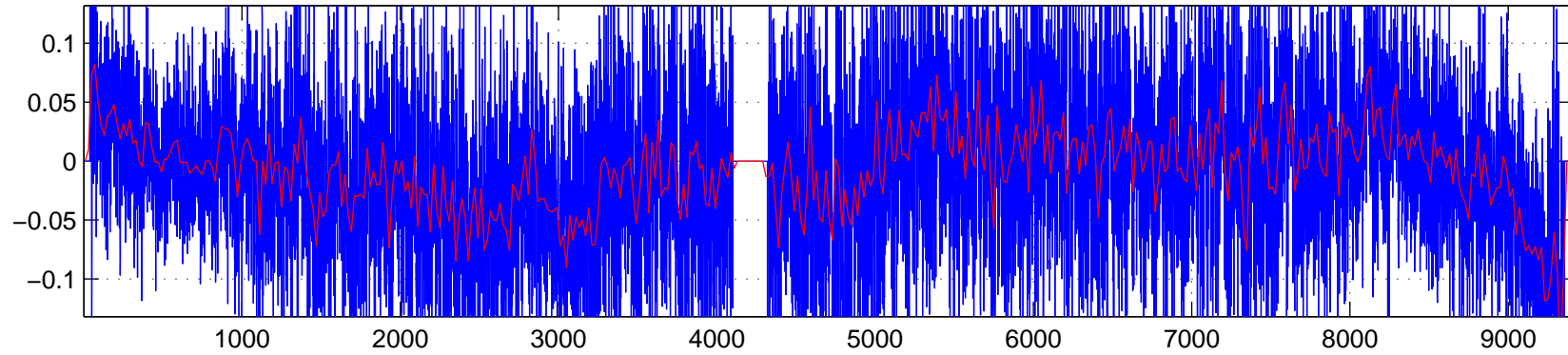
AB1502_AT_SEA_008 Figure 8

Cut CTD profile CTD (r) LADCP (b)

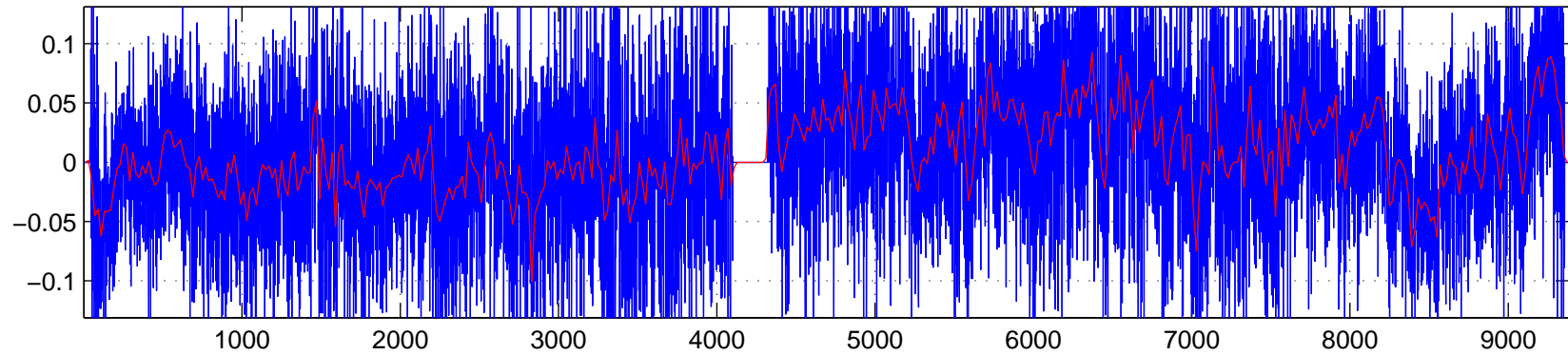


AB1502_AT_SEA_008 Figure 10

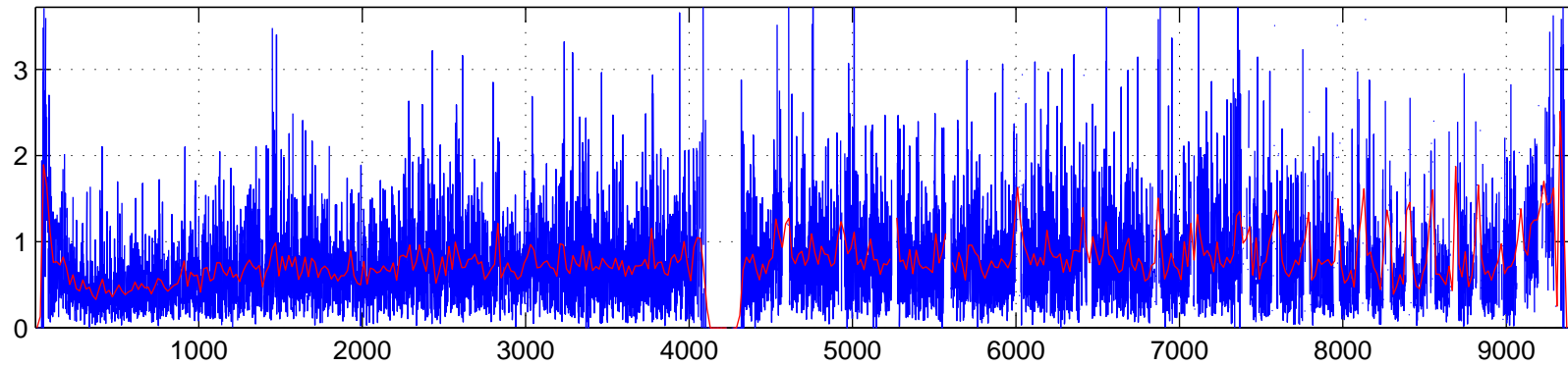
U offset derived from CTD motion [m/s]



V offset derived from CTD motion [m/s]



Tilt error [degree] consistent with offset



LADCP WARNINGS

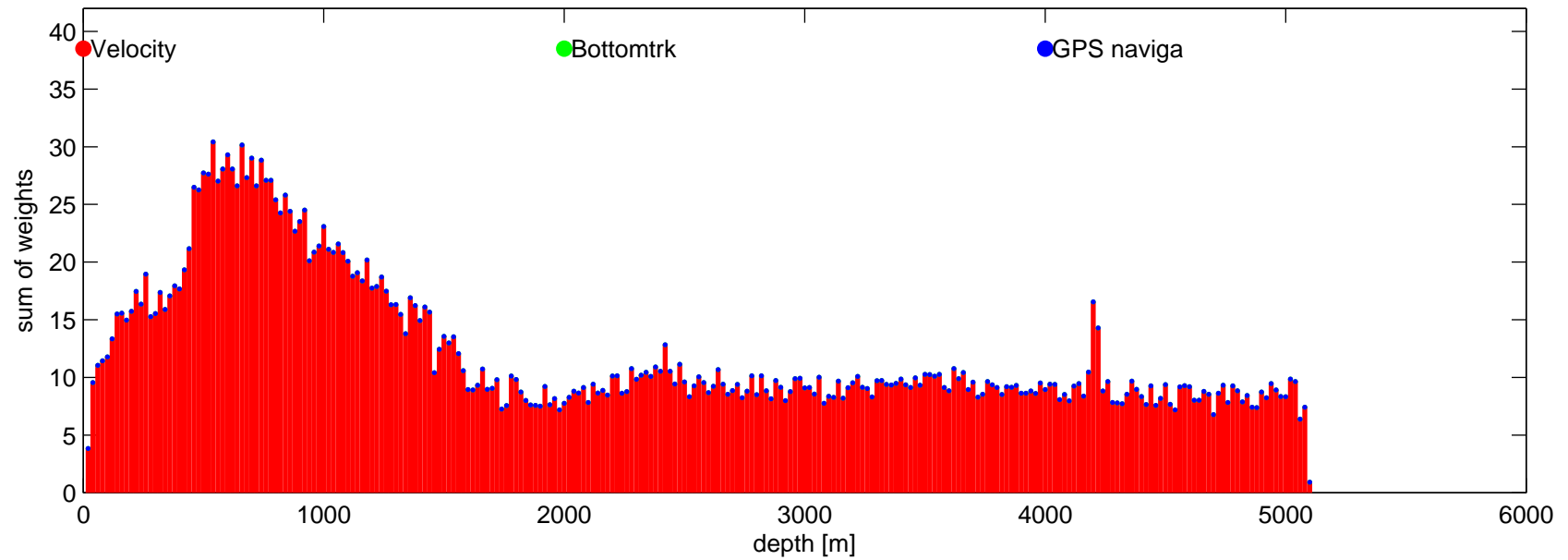
- > Increased error because of shear – inverse difference
- > Battery voltage is unknown. Need calibration coeff.

LADCP processing warnings:

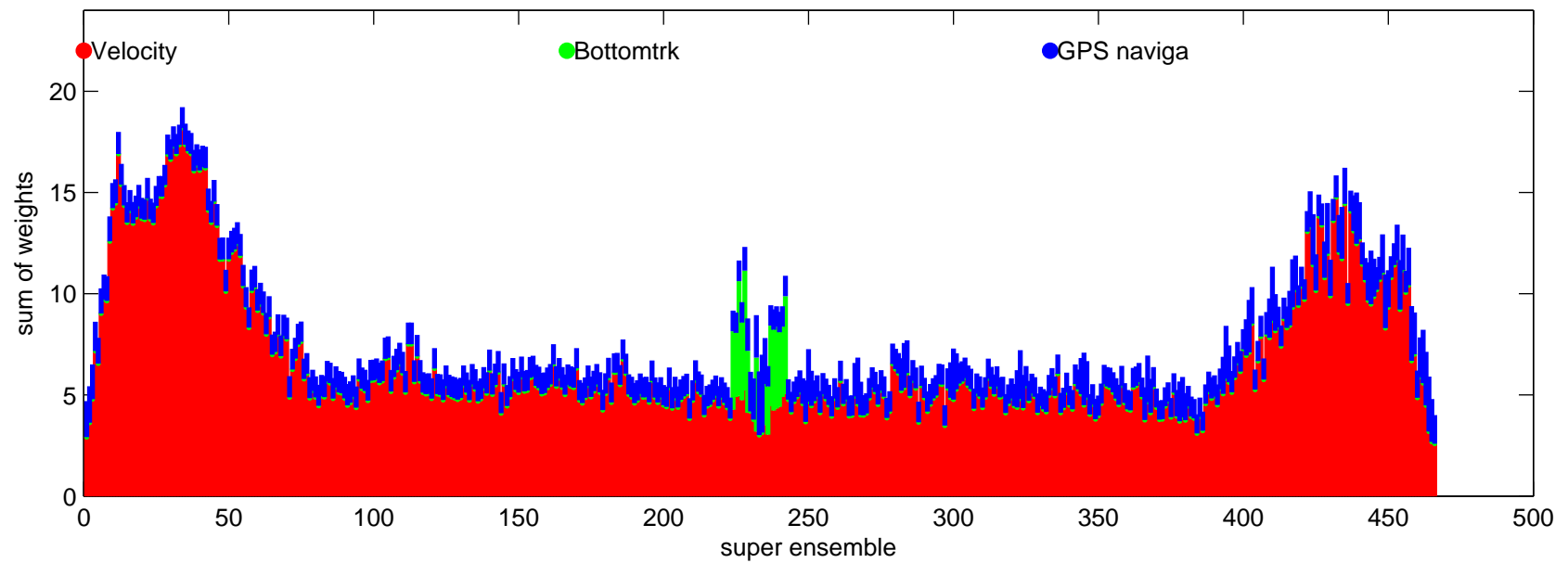
Battery Voltage is NaN V

AB1502_AT_SEA_008 Figure 12

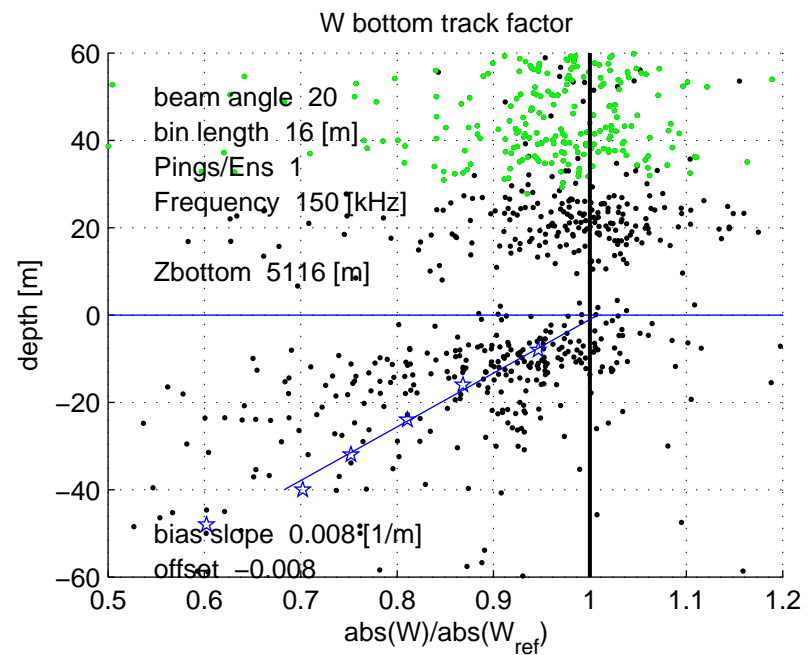
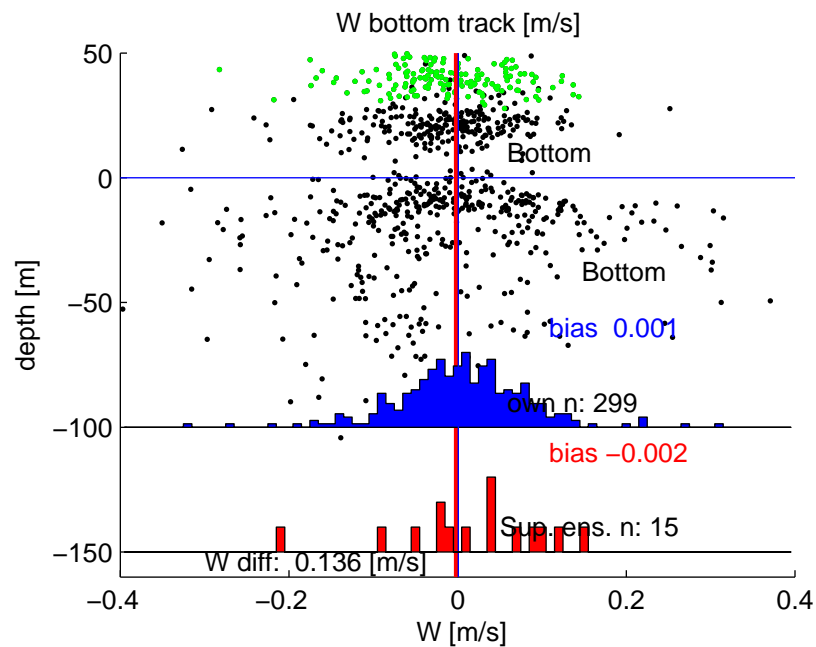
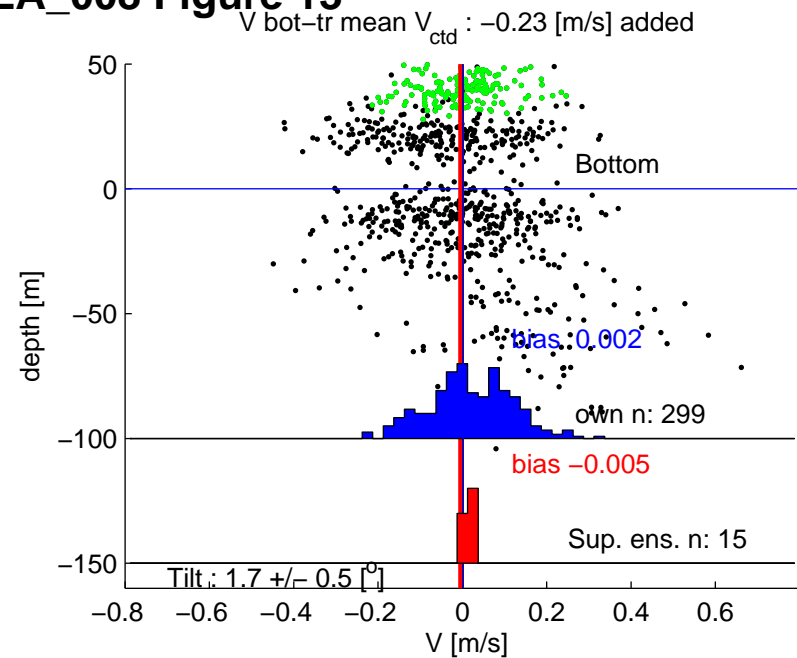
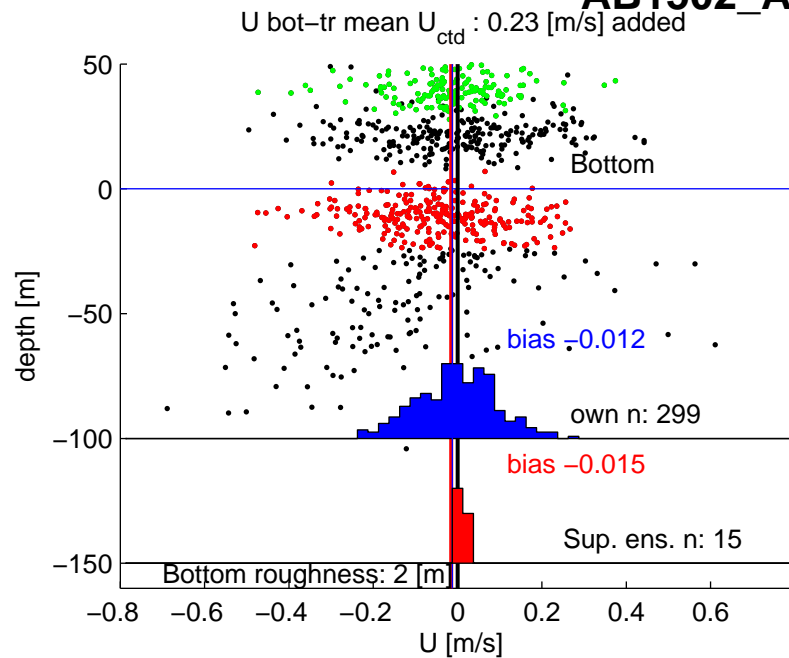
ocean velocity constraints



CTD velocity constraints

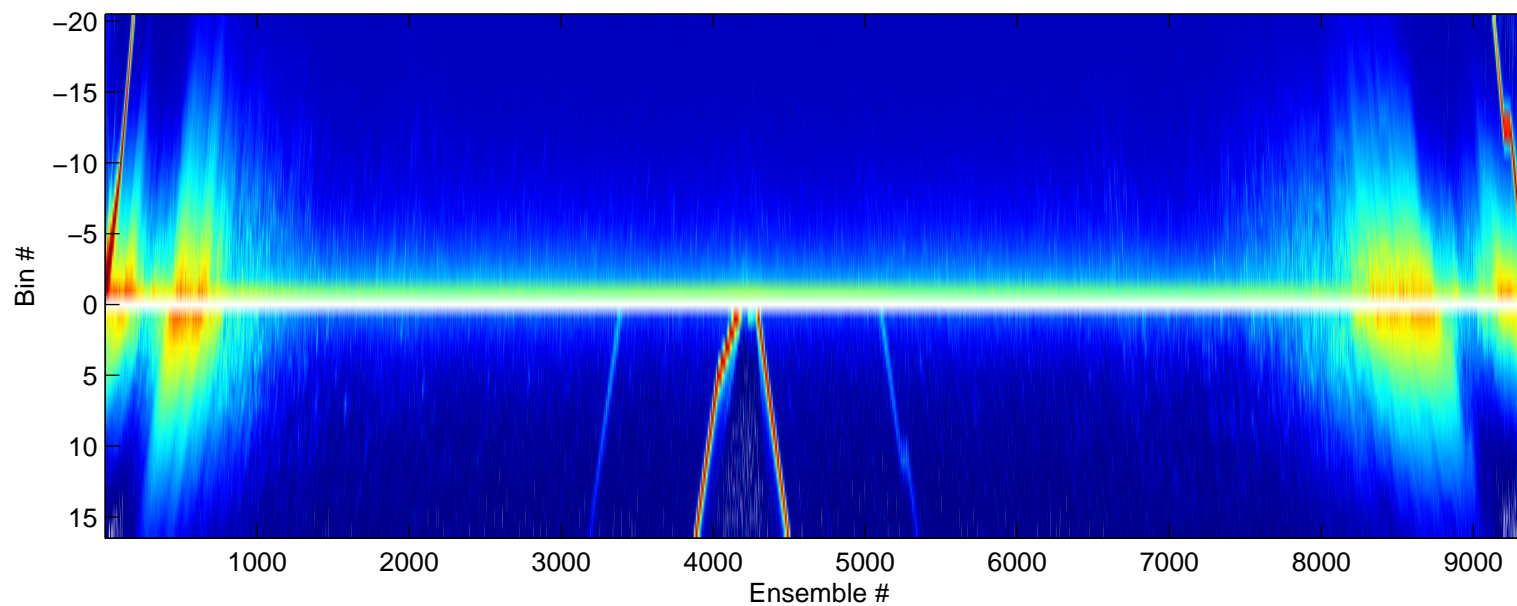


AB1502_AT_SEA_008 Figure 13

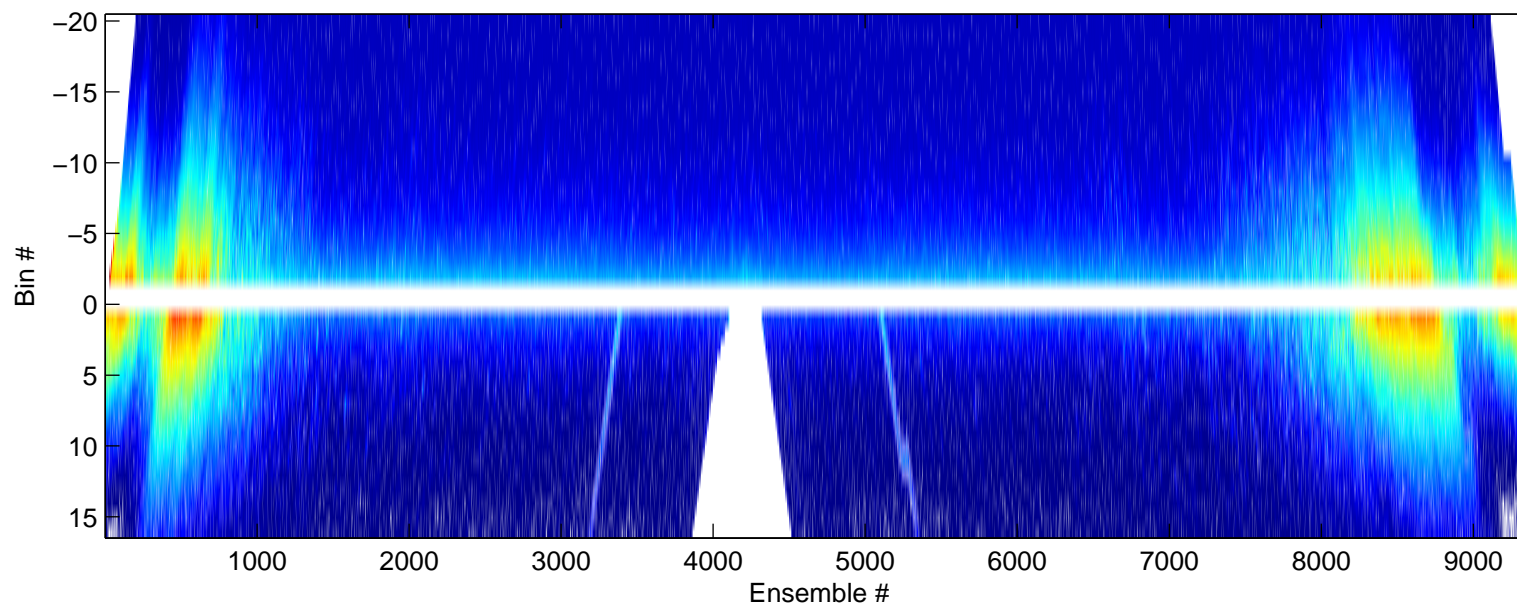


AB1502_AT_SEA_008 Figure 14

Before Data Editing

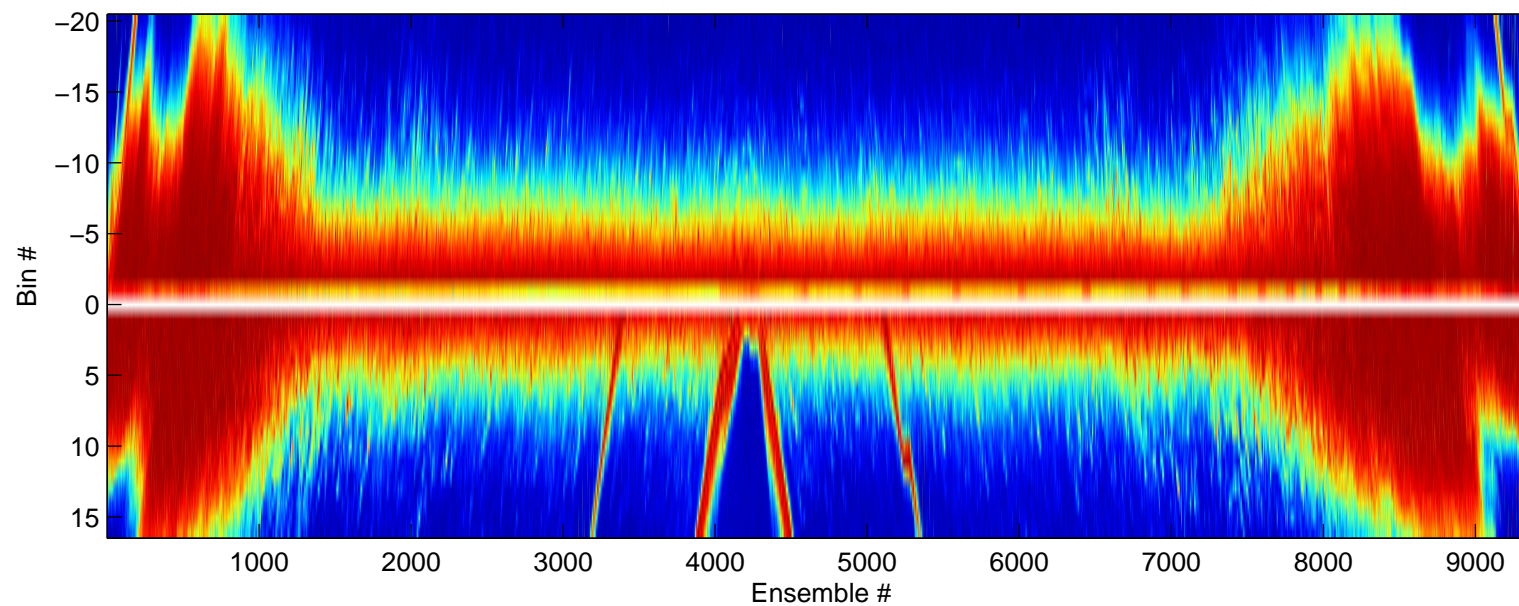


After Data Editing

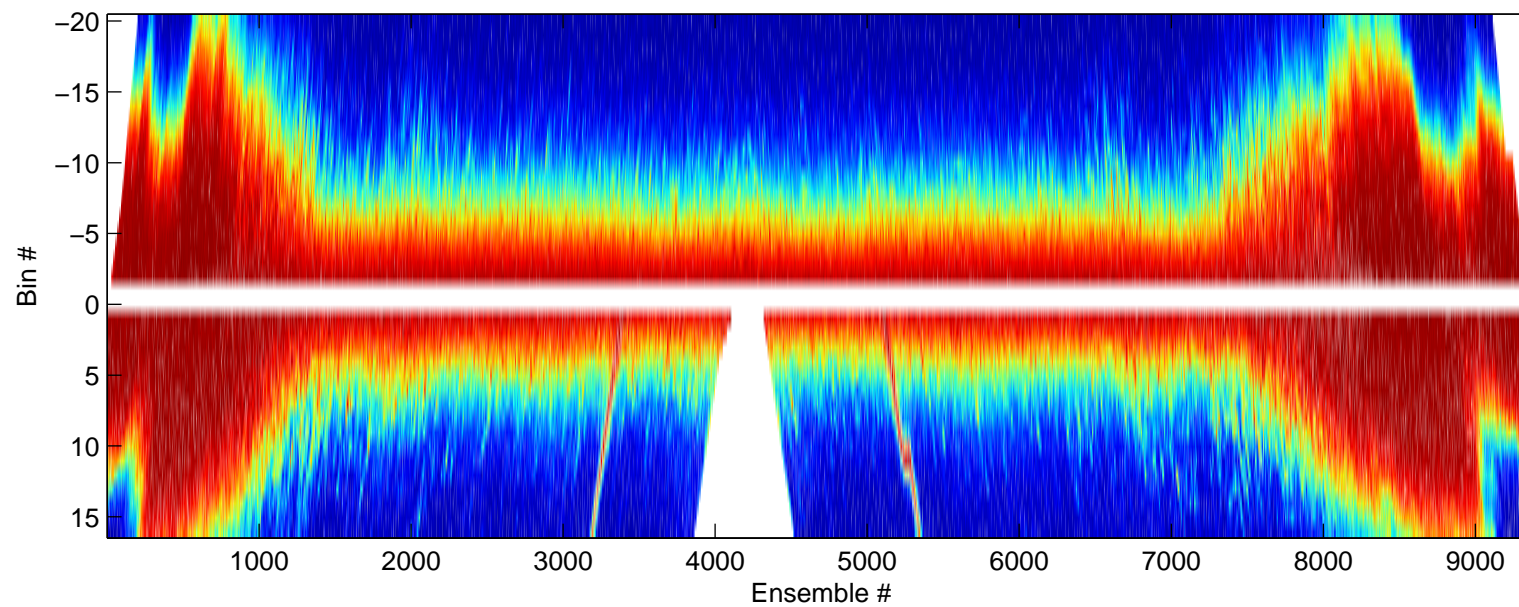


AB1502_AT_SEA_008 Figure 15

Before Data Editing

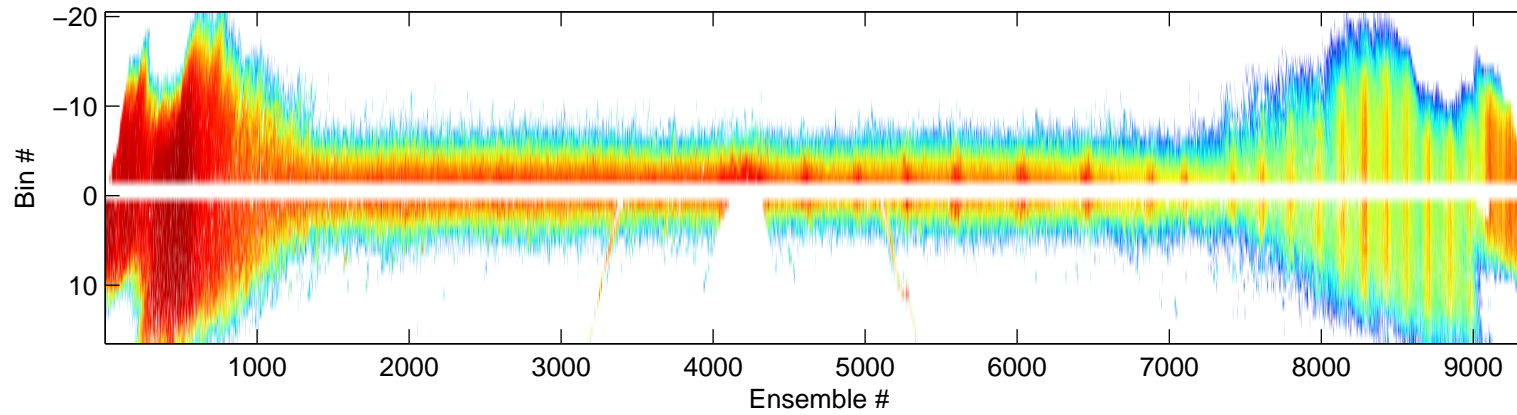


After Data Editing

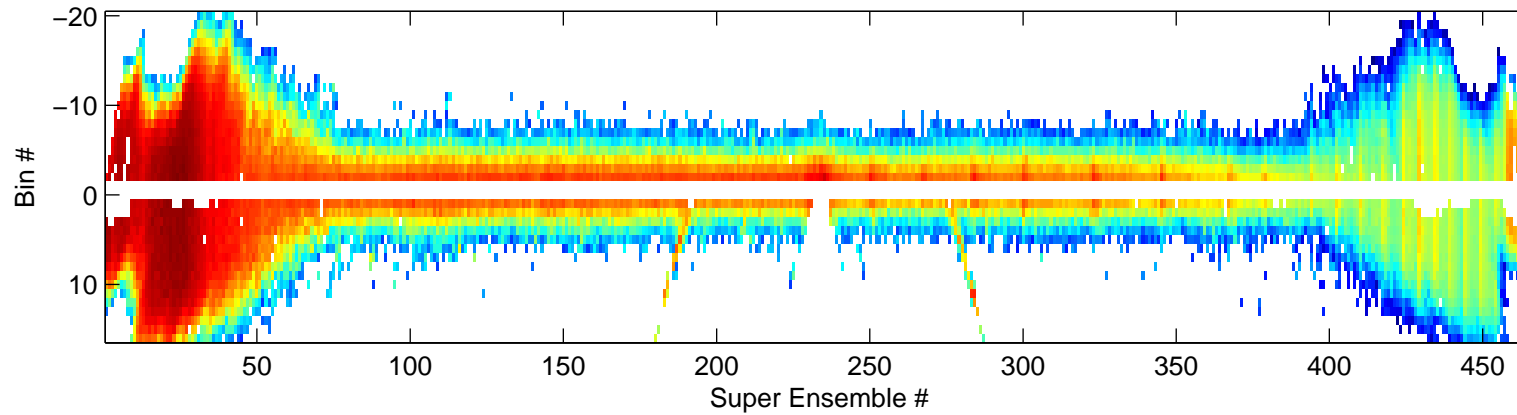


AB1502_AT_SEA_008 Figure 16

Weights based on various parameters



Weights based on various parameters



Weights based on standard deviation of super ensembles

