

Straits of Florida: CTD data calibration report
NOAA/AOML: Western Boundary Time Series program

Cruise ID: WS0921

Cruise date: November, 2009

Rigoberto F. Garcia

Carlos A. Fonseca

Christopher S. Meinen

Molly O. Baringer

January 14, 2010

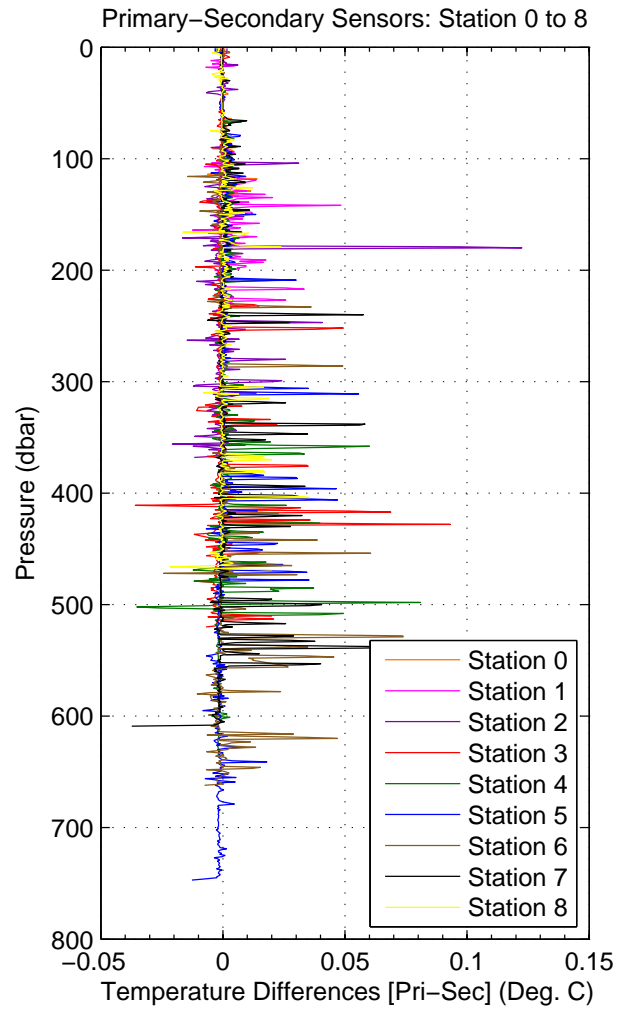
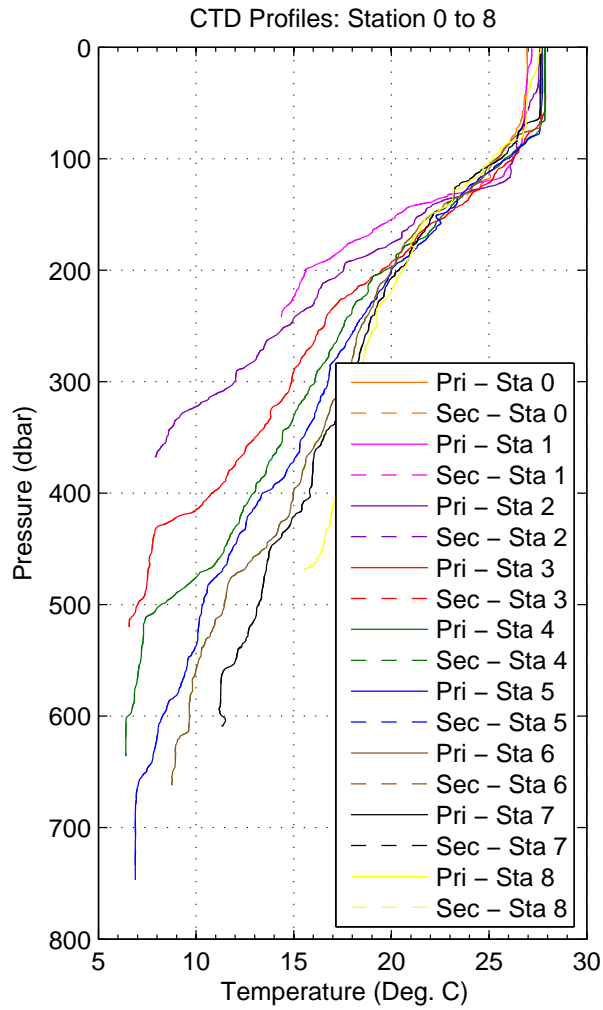


Figure 1: WS0921

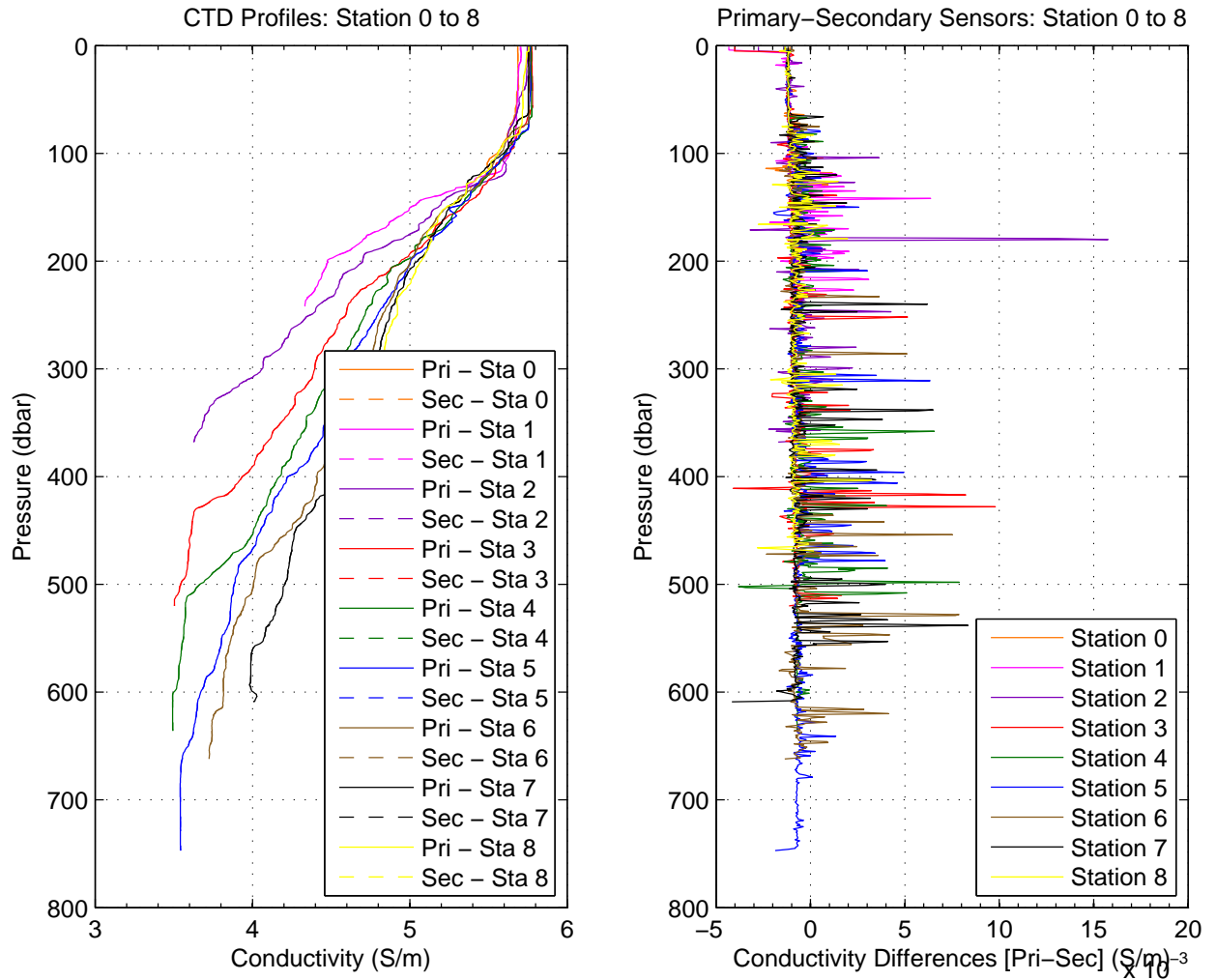


Figure 2: WS0921

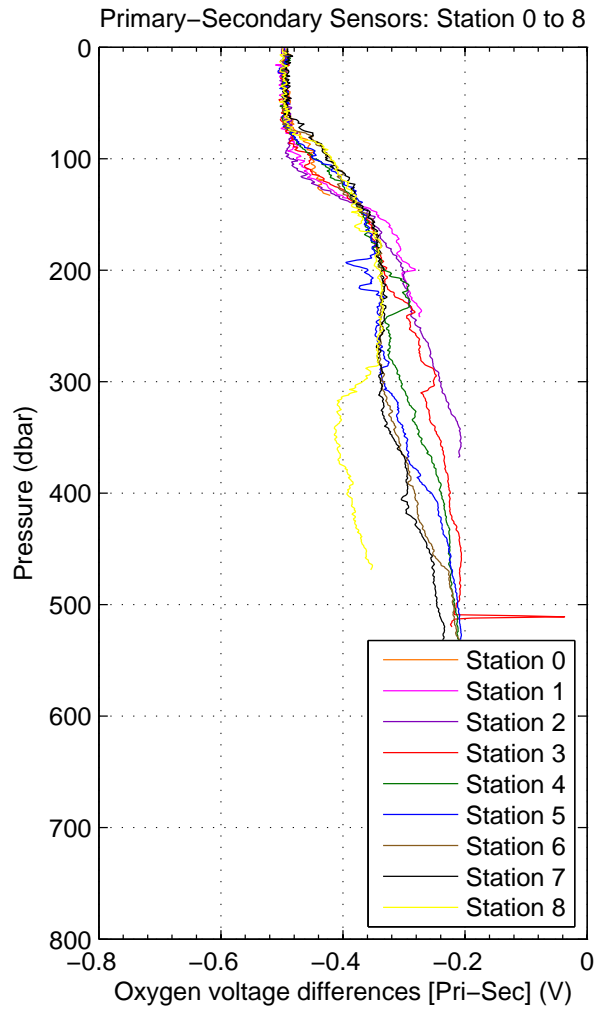
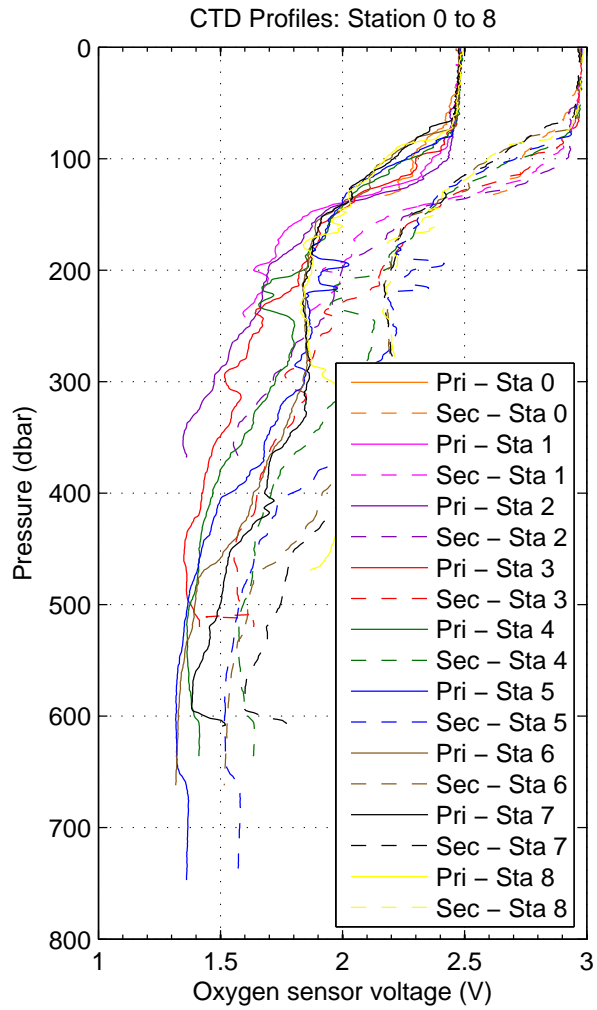


Figure 3: WS0921

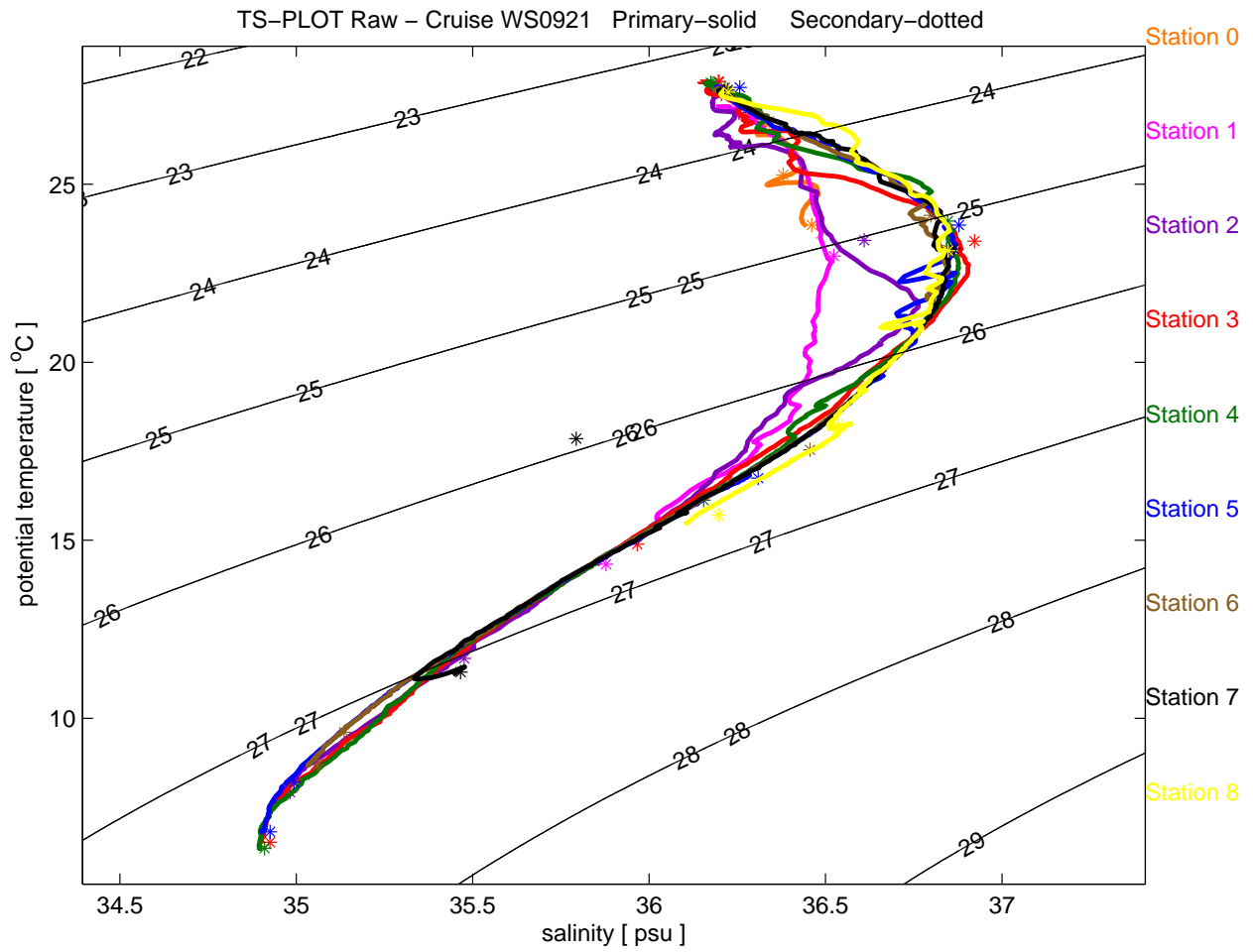


Figure 4: WS0921

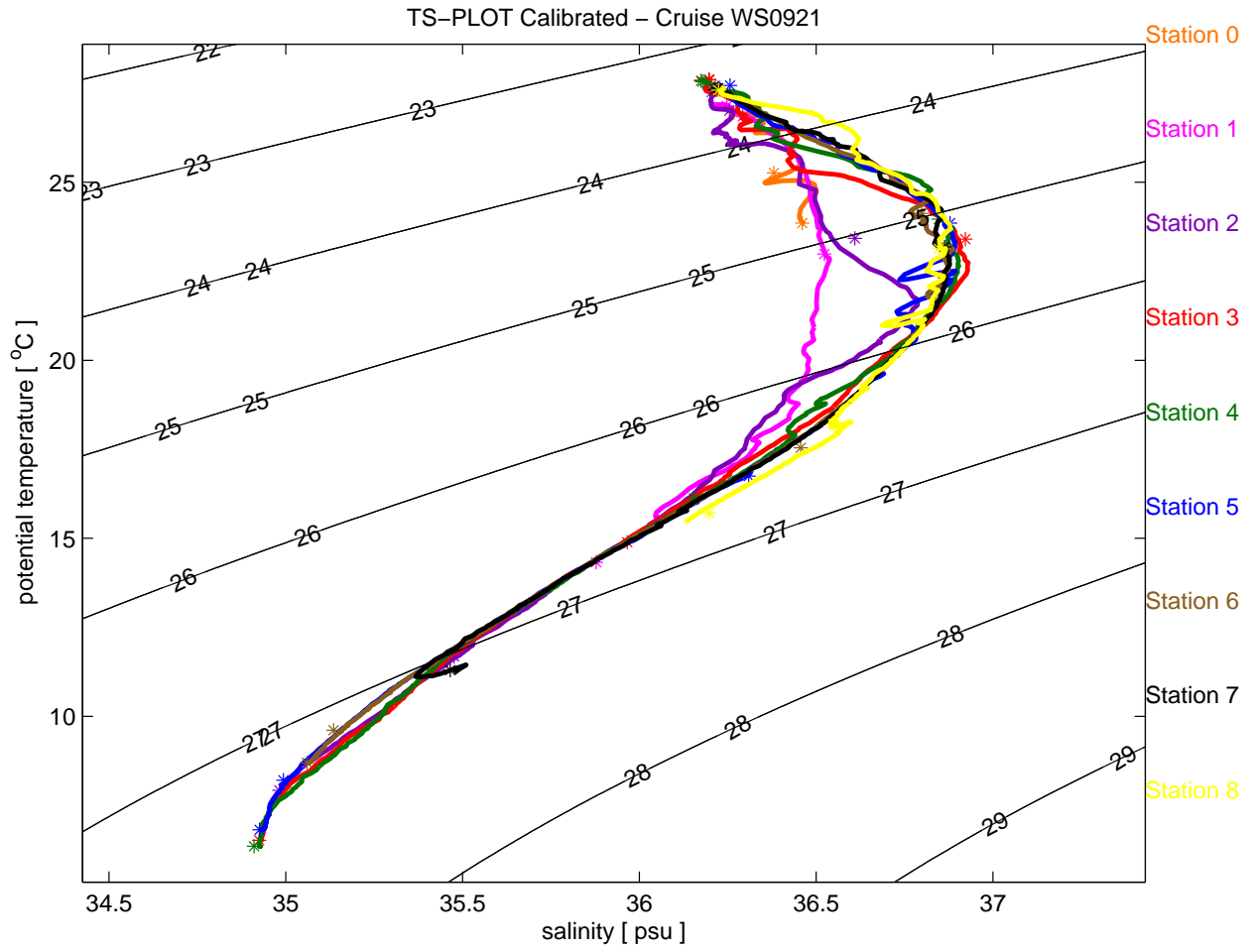


Figure 5: WS0921

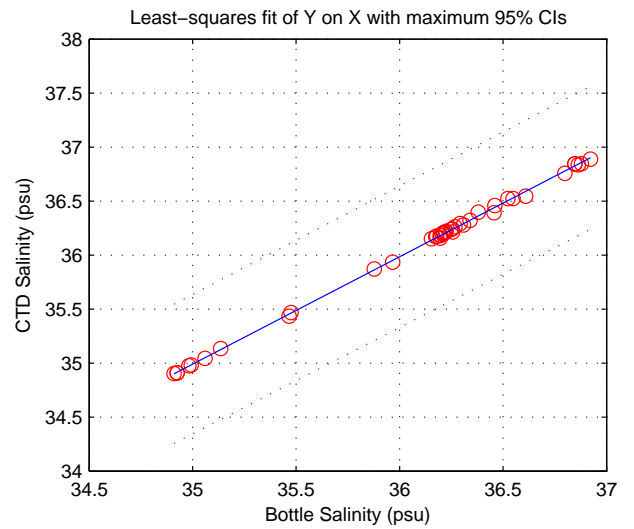
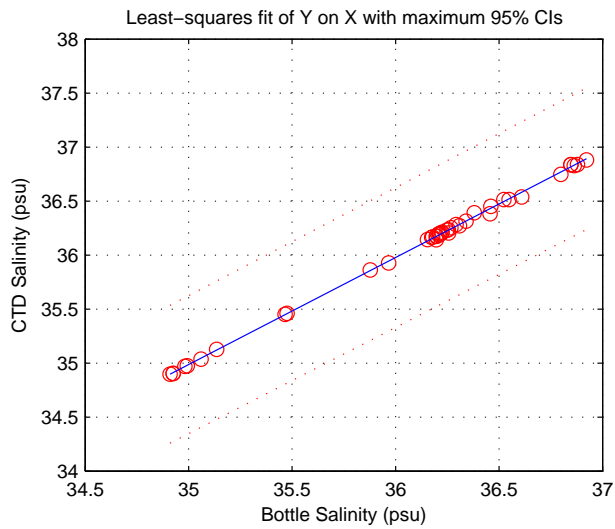
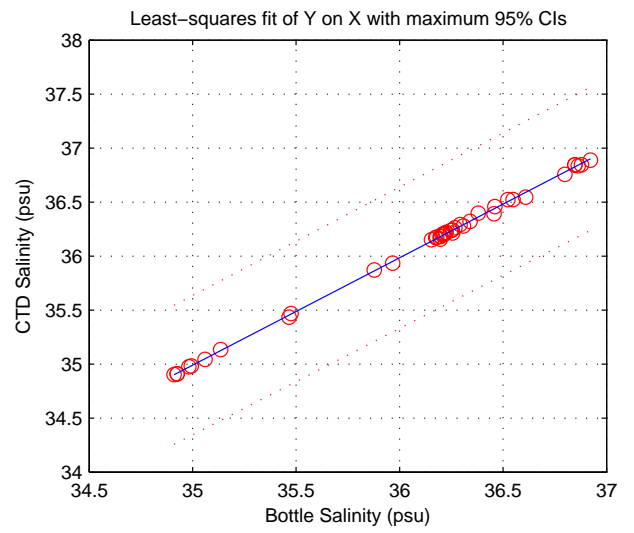
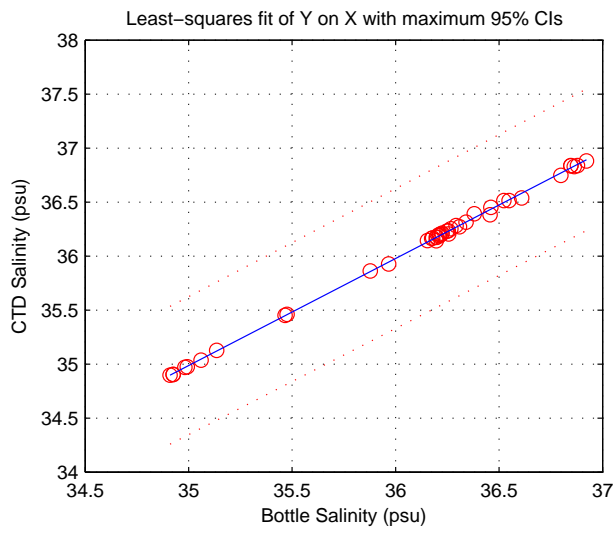
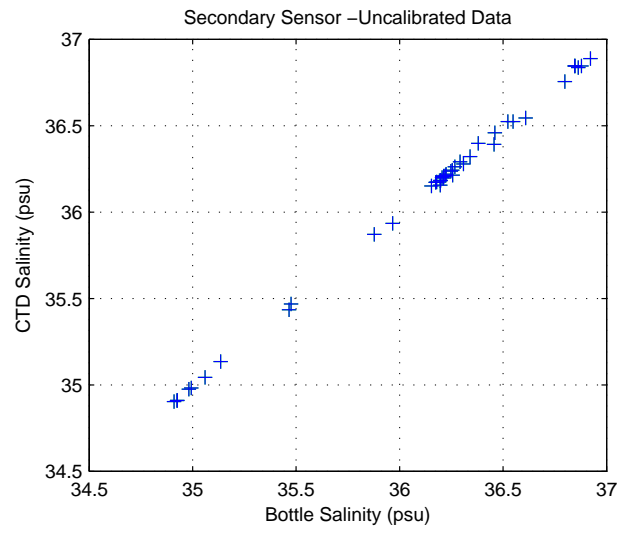
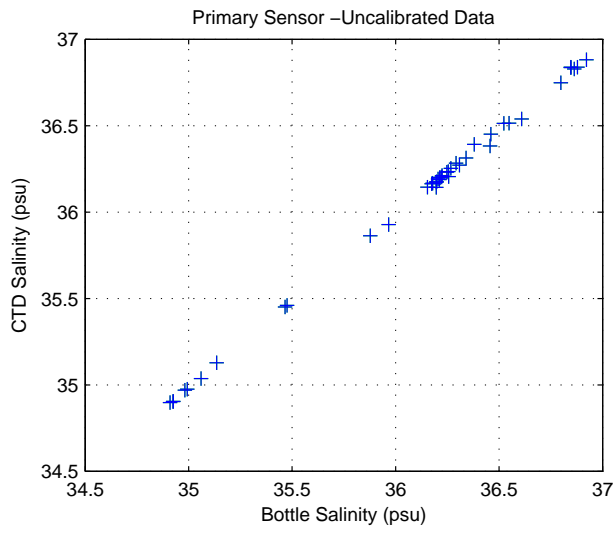


Figure 6: WS0921

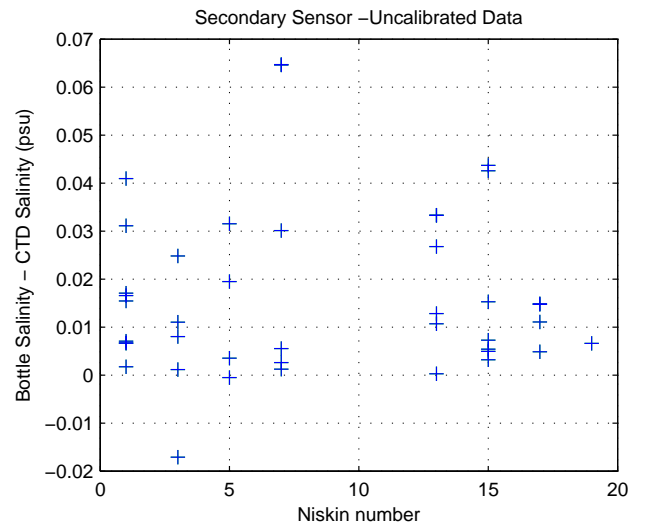
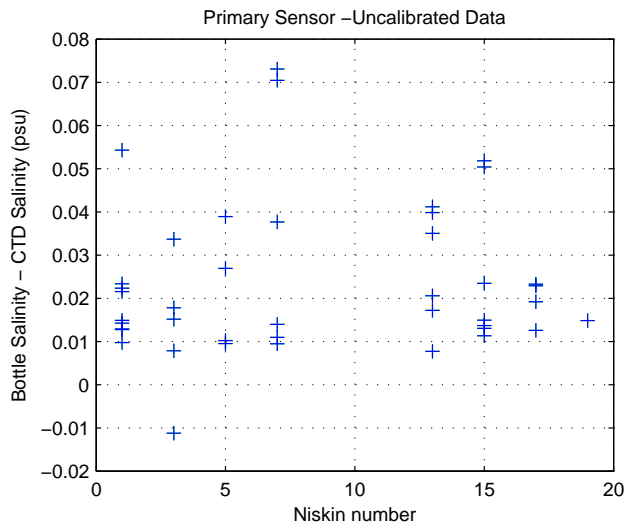
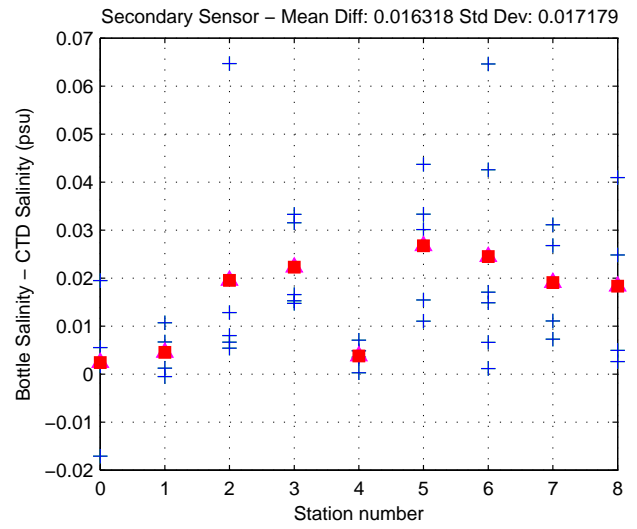
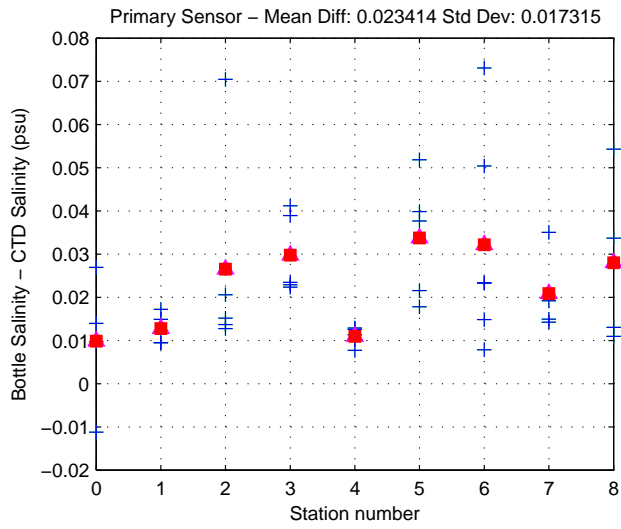
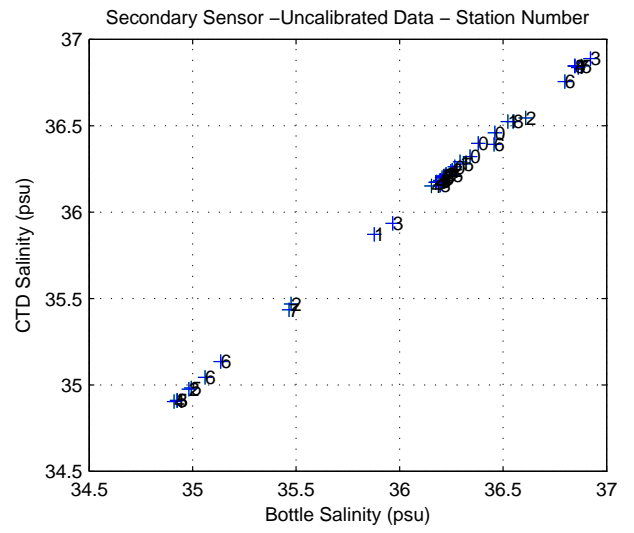
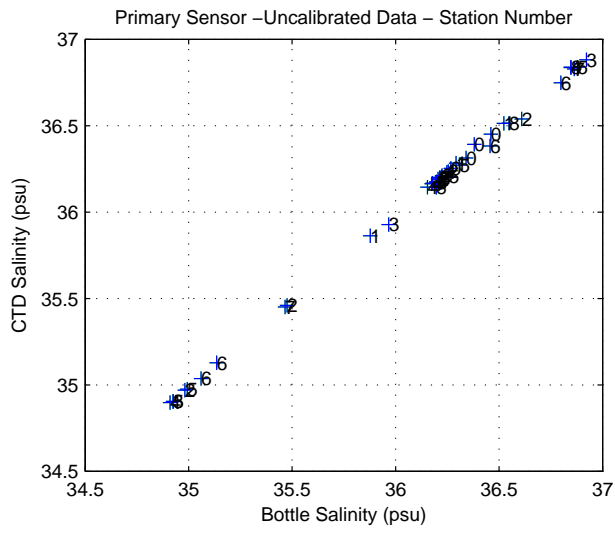


Figure 7: WS0921

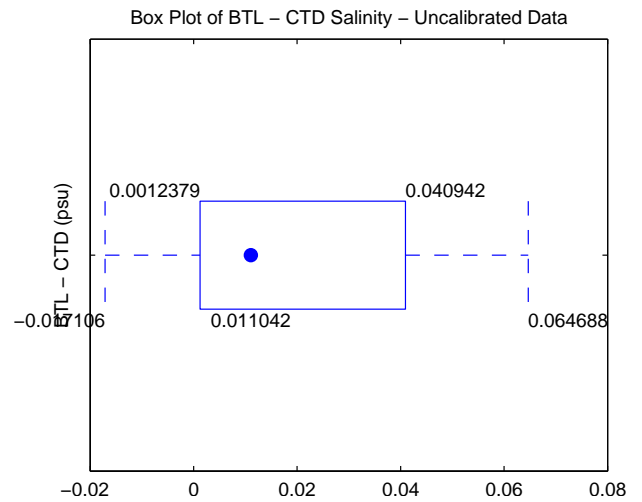
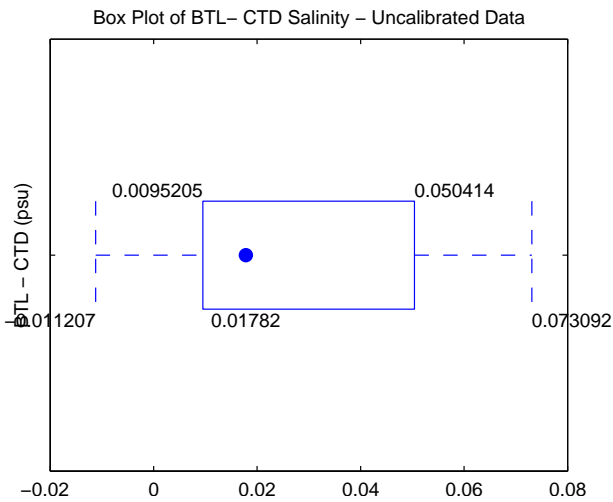
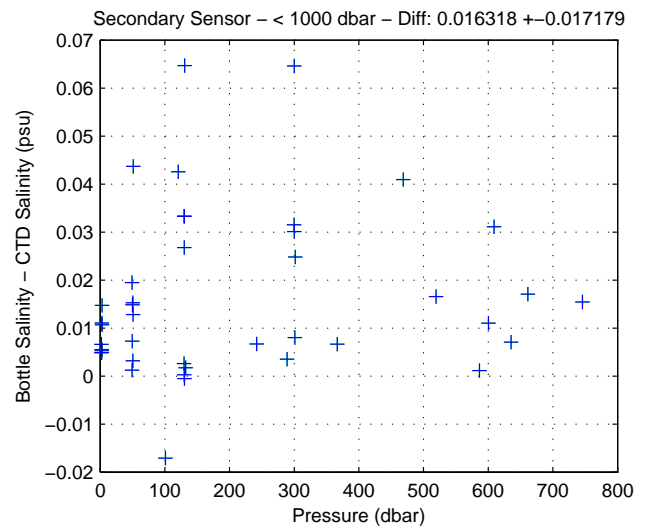
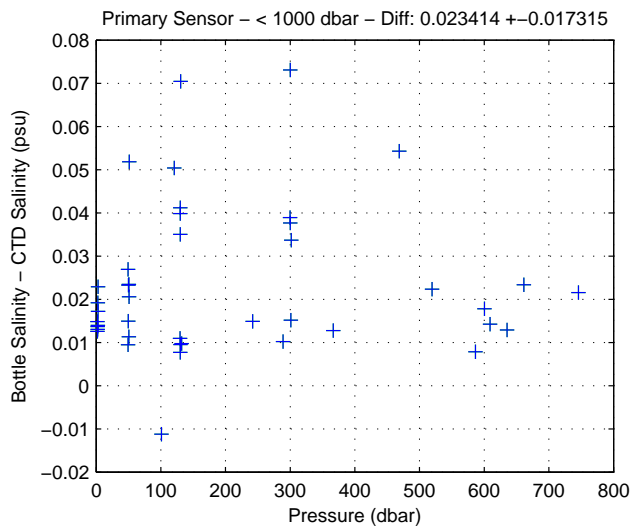
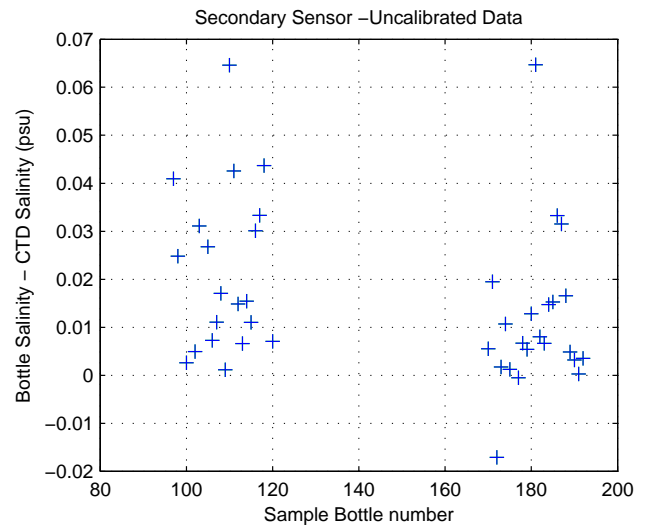
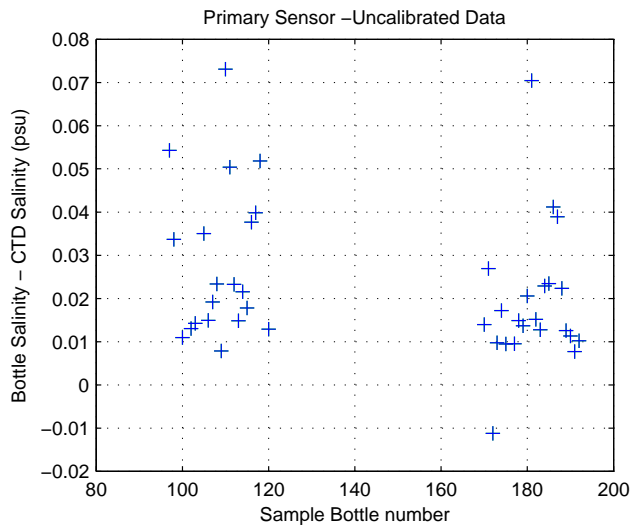


Figure 8: WS0921

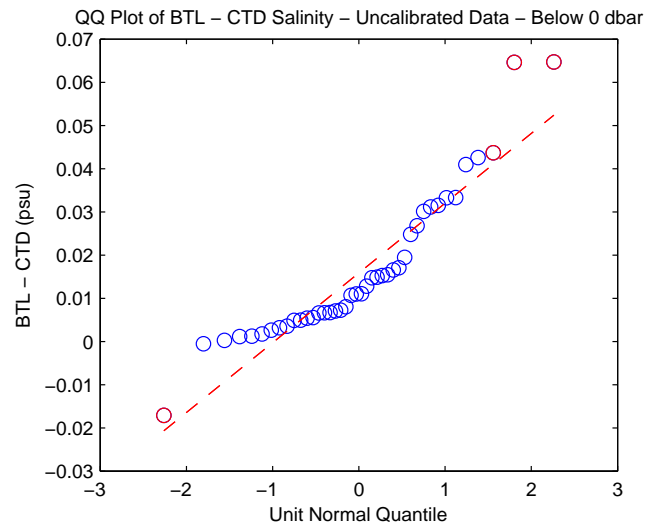
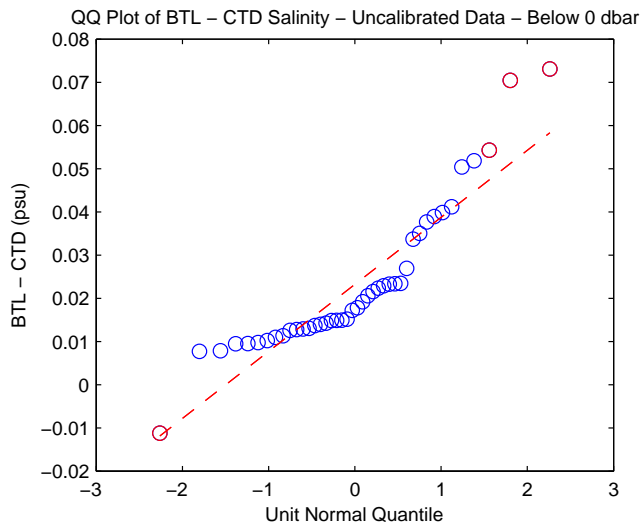
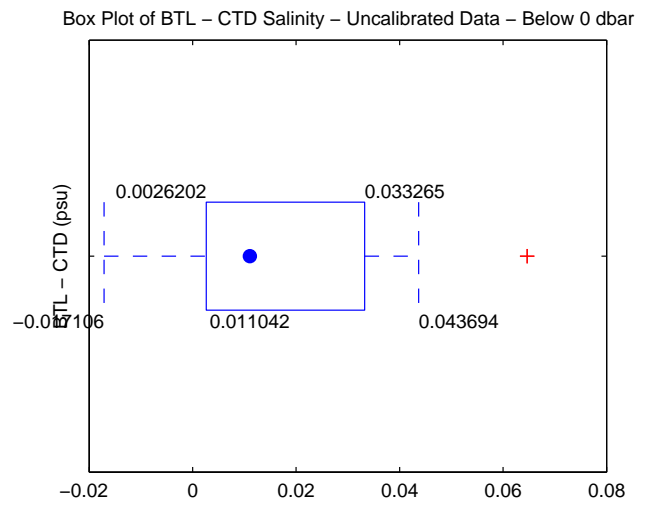
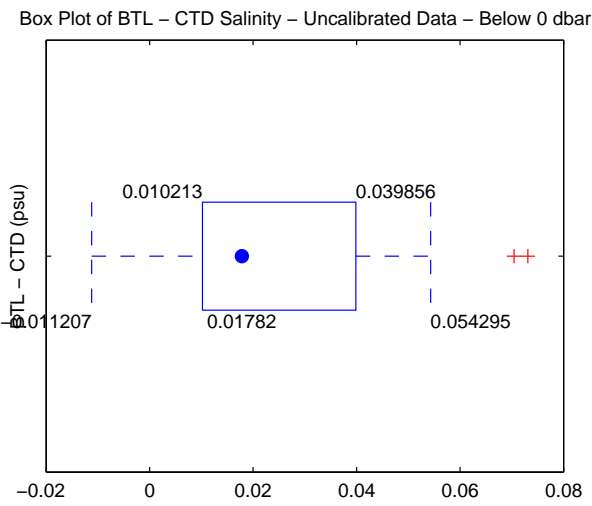
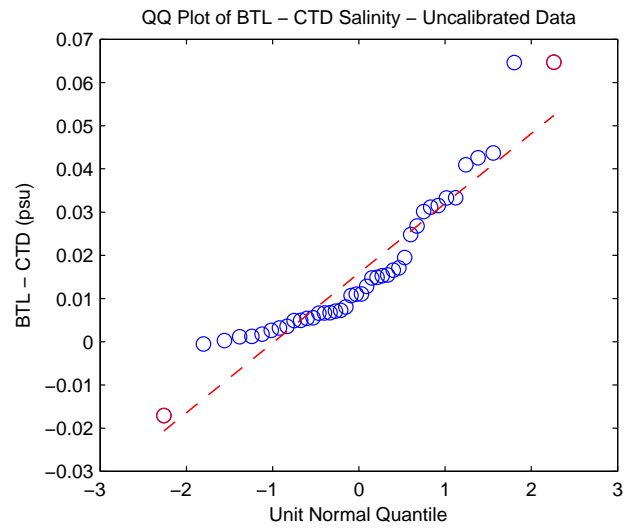
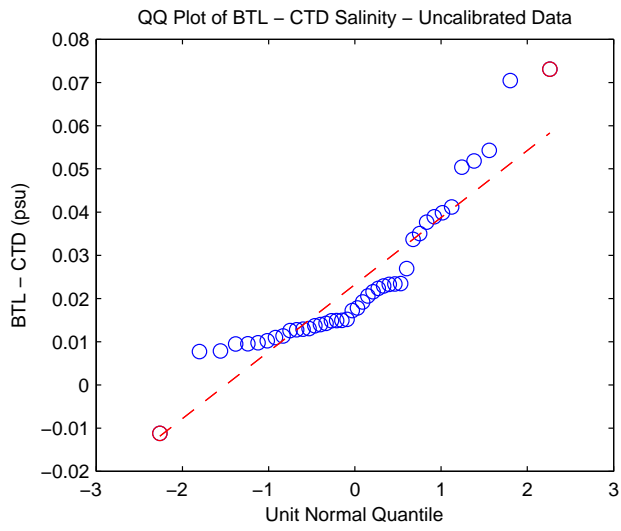


Figure 9: WS0921

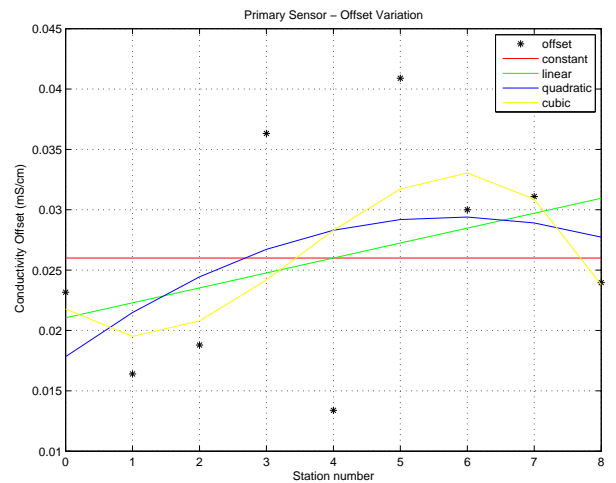
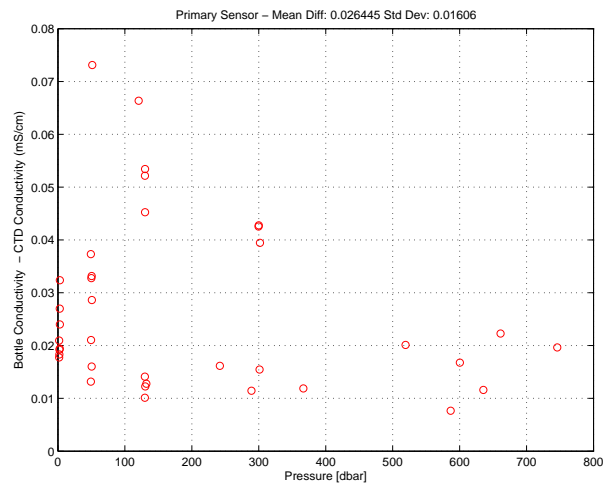
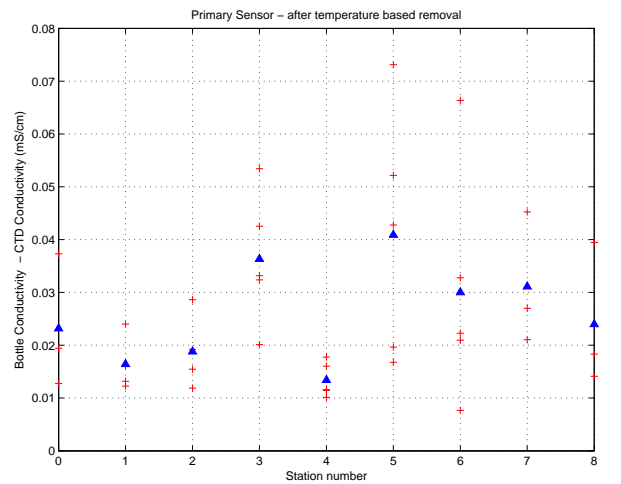
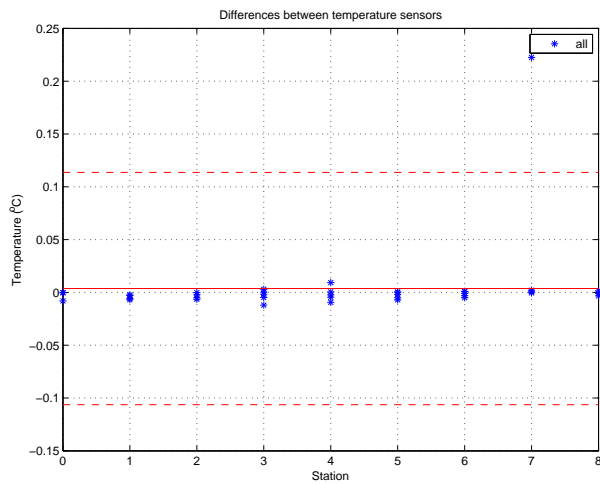
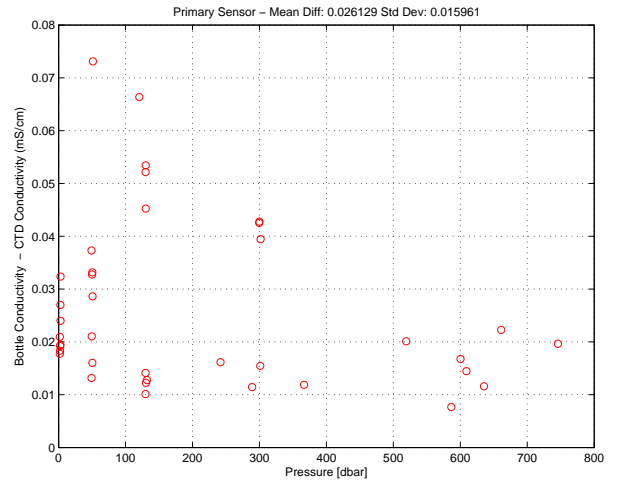
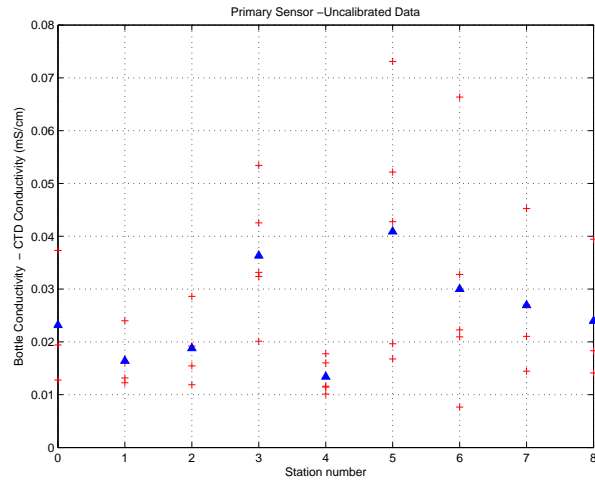


Figure 10: WS0921. Conductivity Calibration

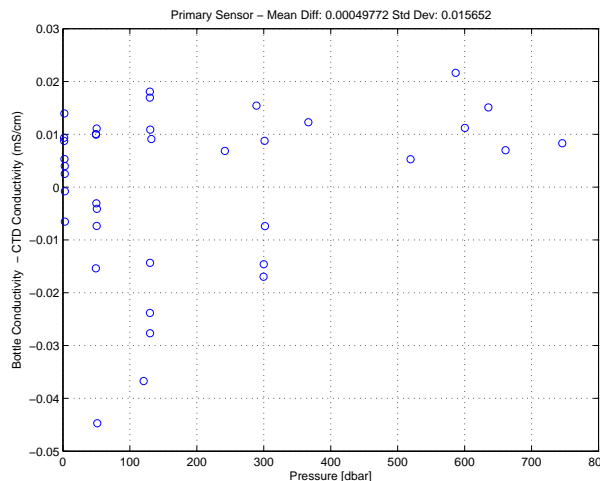
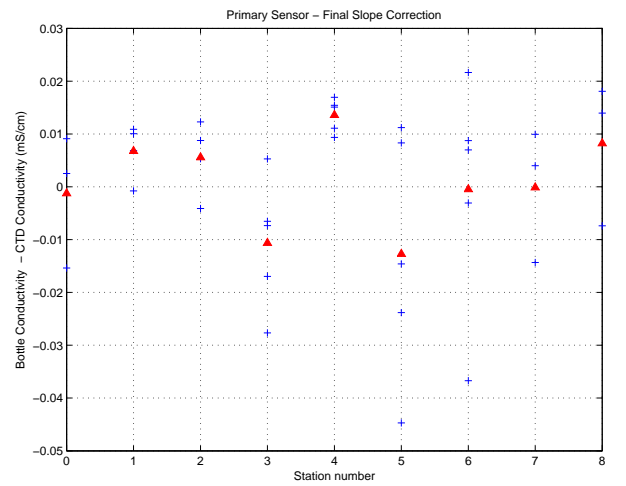
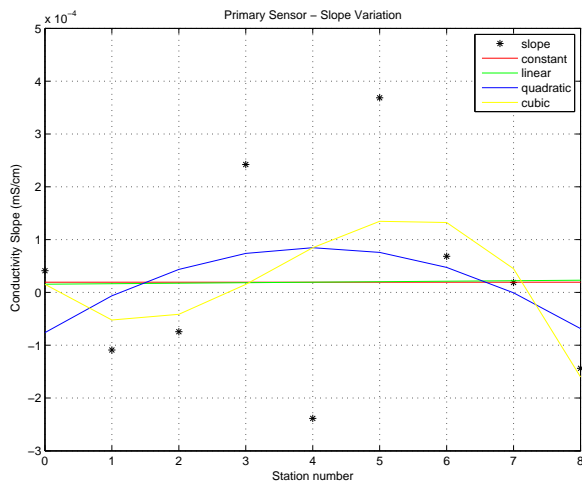
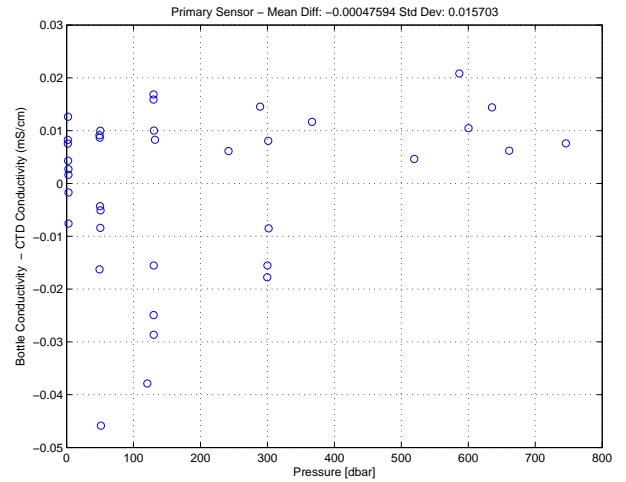
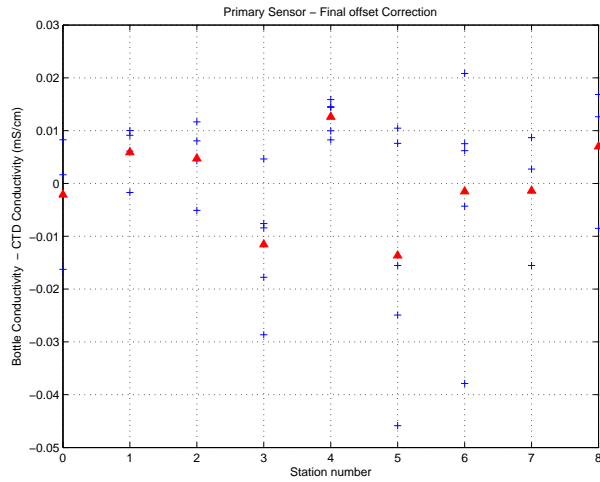


Figure 11: WS0921. Conductivity Calibration (cont.)

Figure 12: WS0921. **Conductivity Calibration (cont.)**

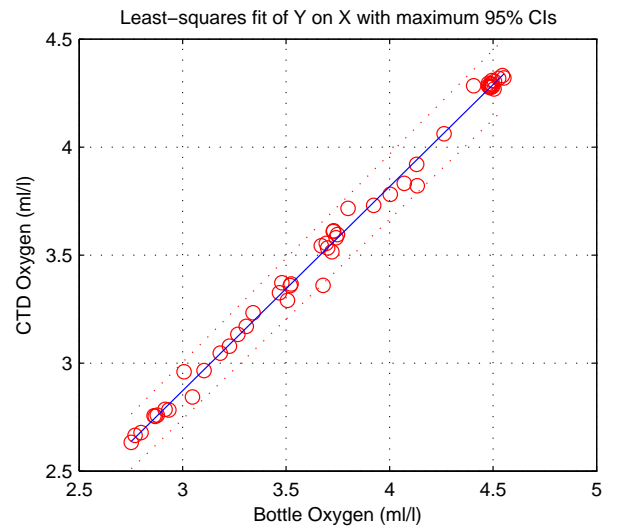
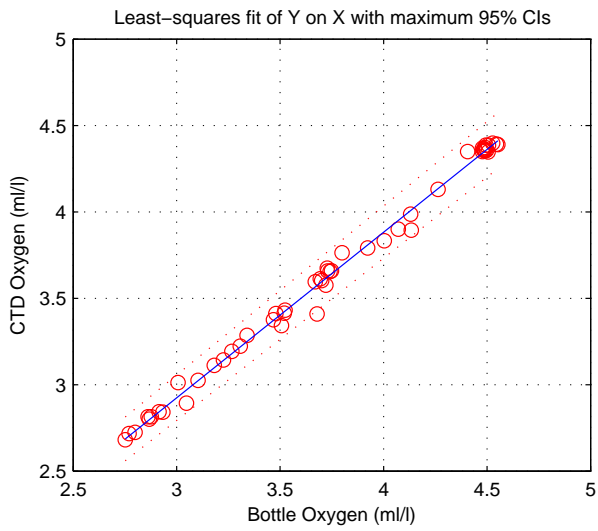
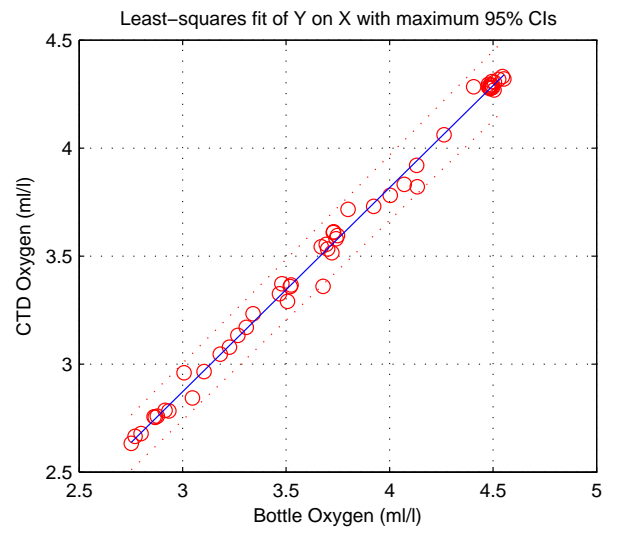
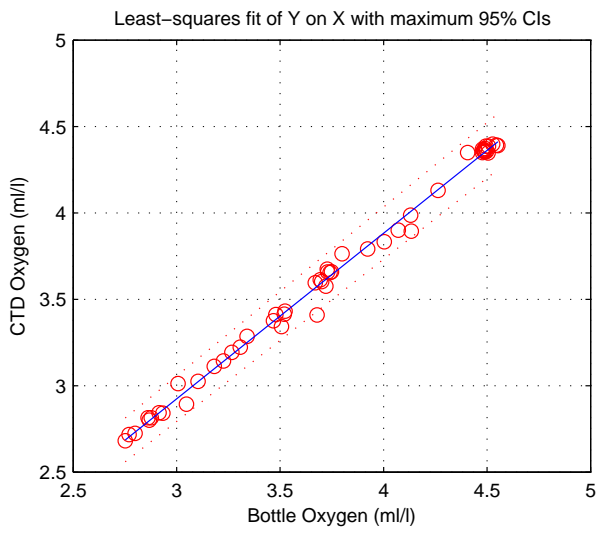
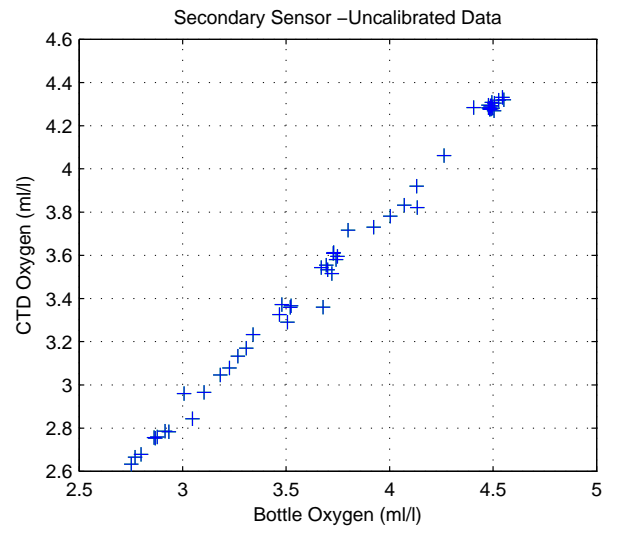
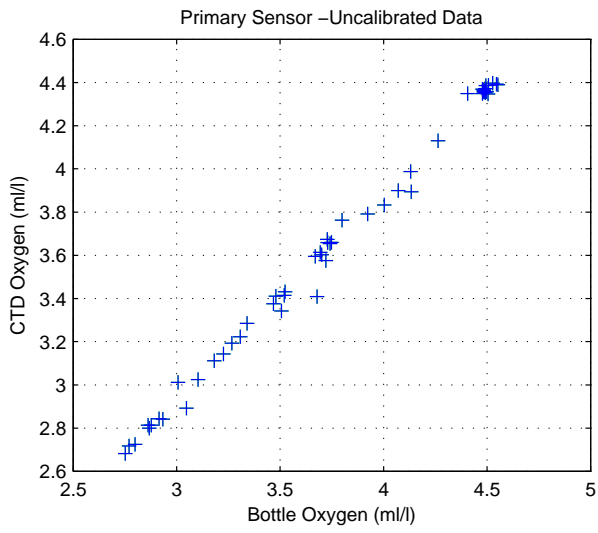


Figure 13: WS0921

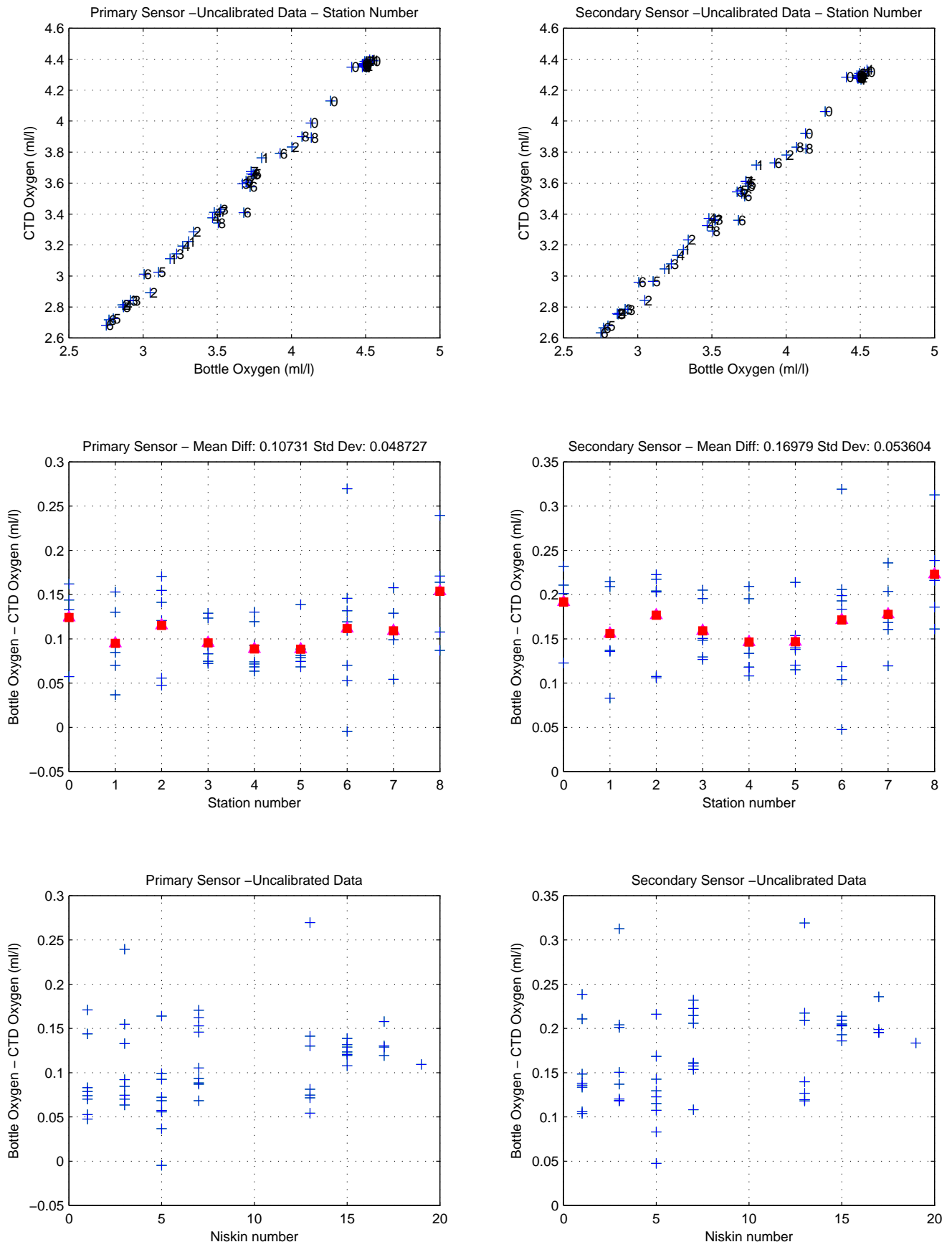


Figure 14: WS0921

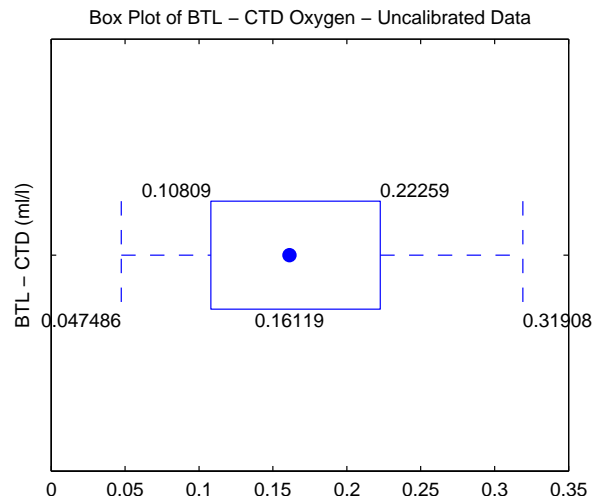
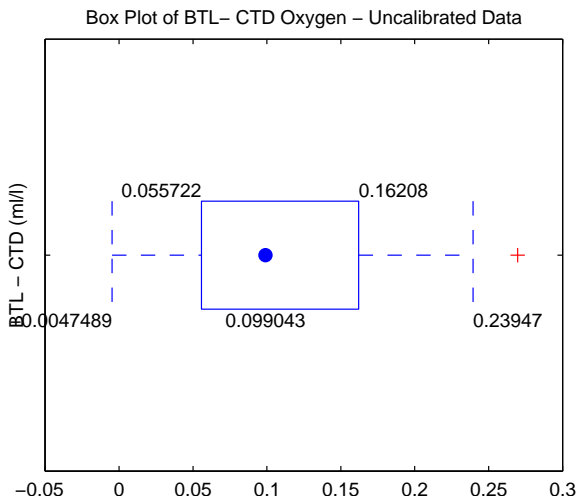
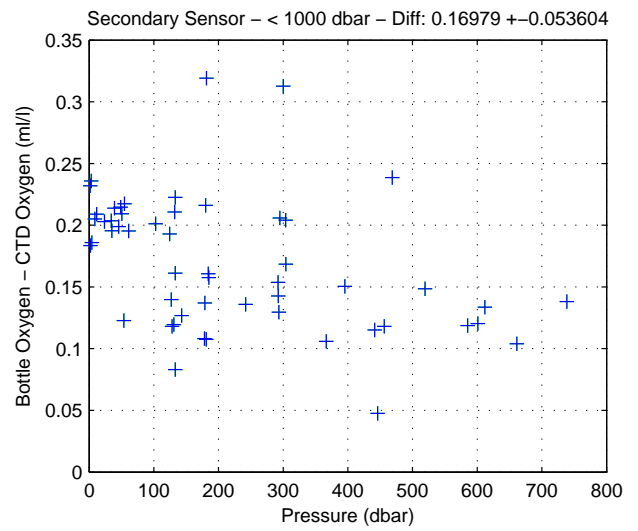
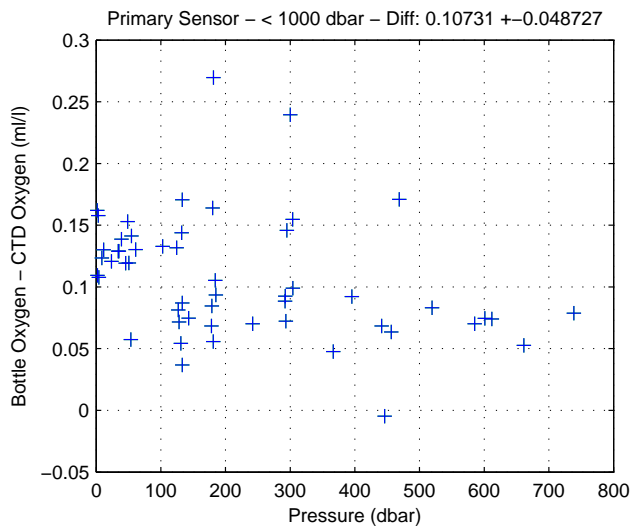
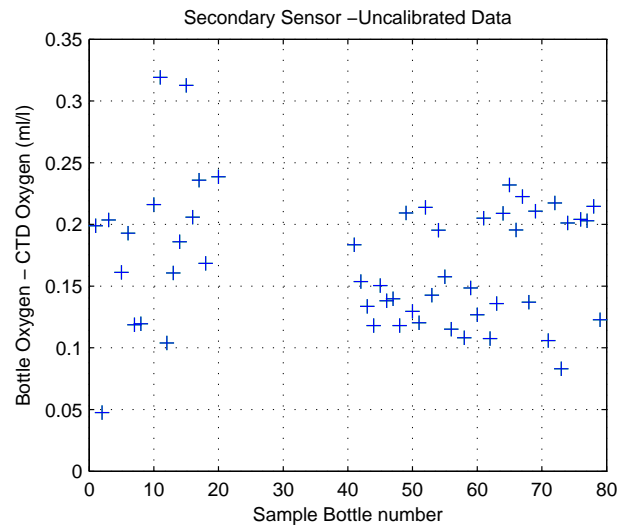
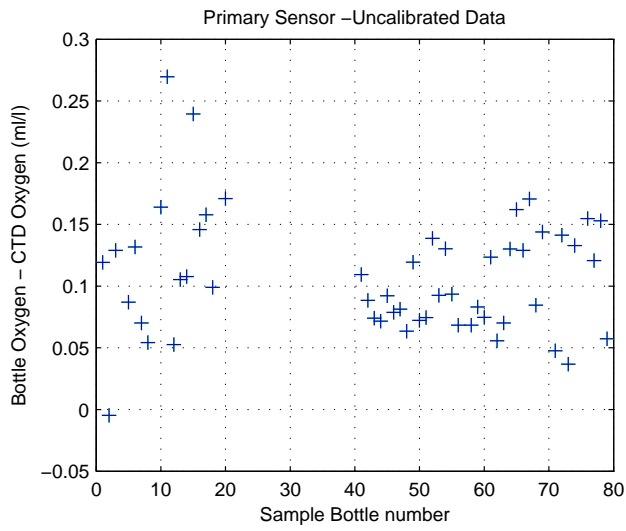


Figure 15: WS0921

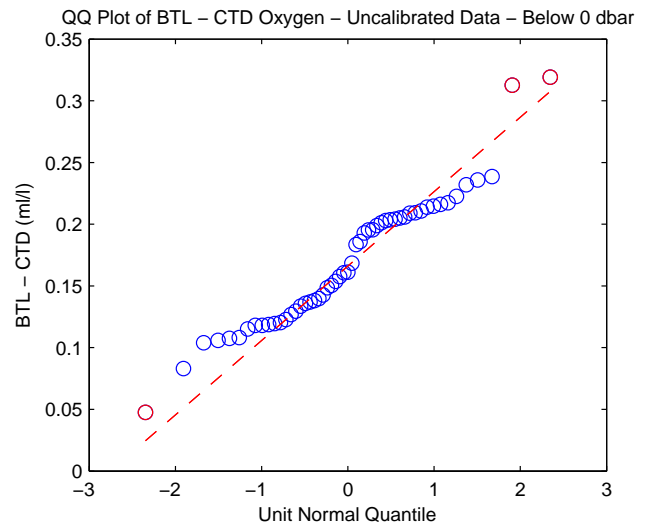
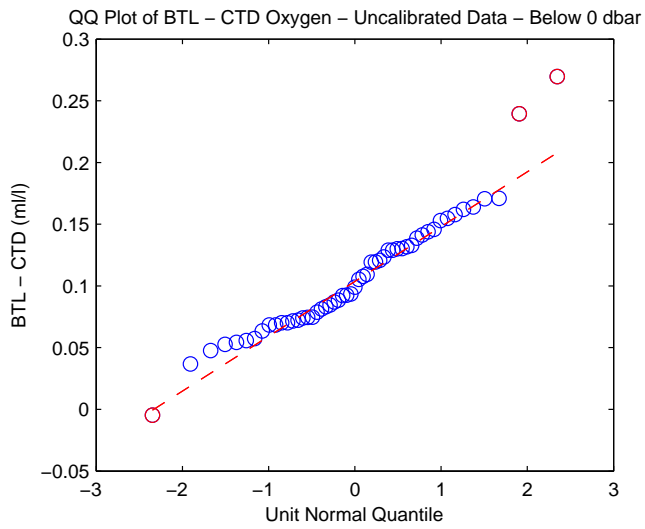
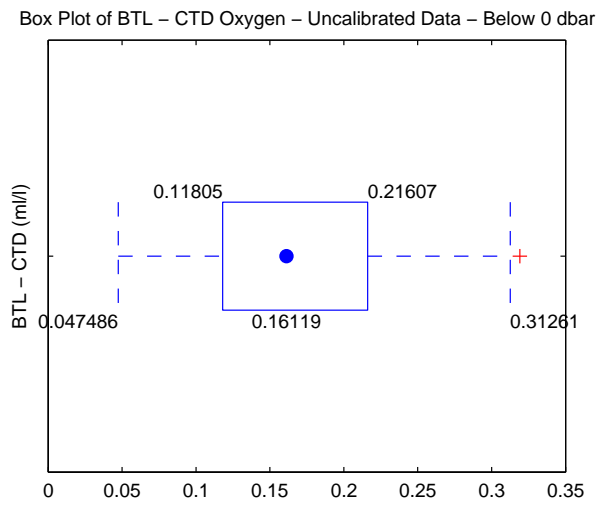
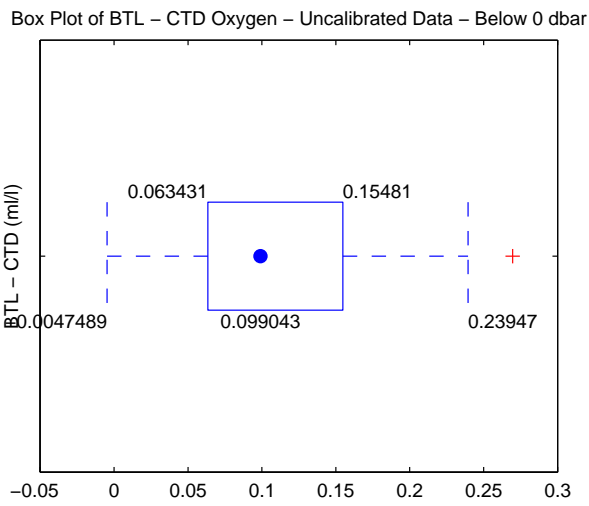
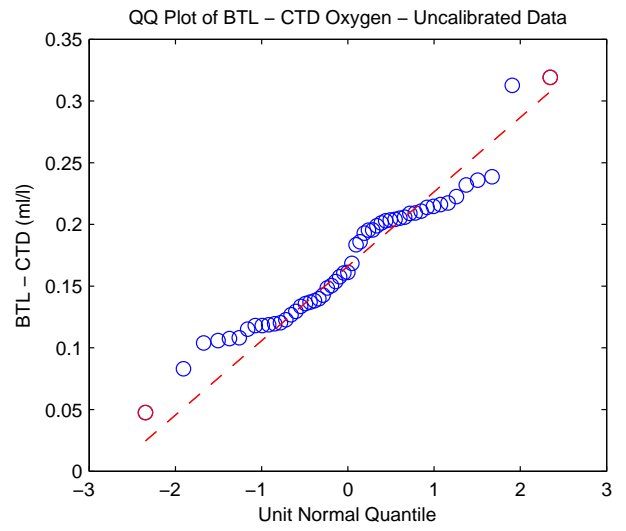
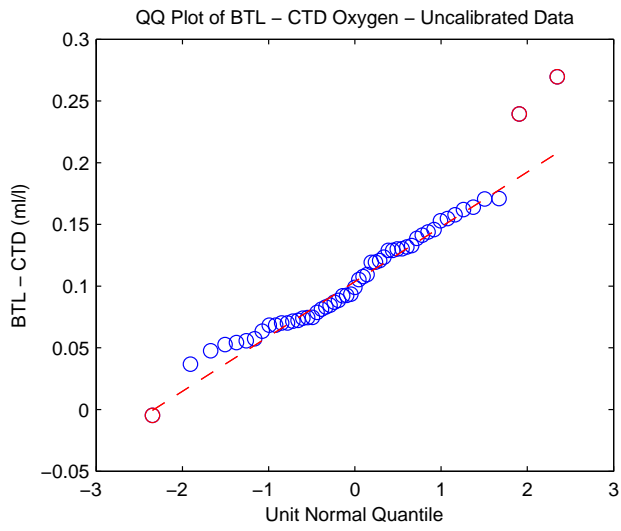


Figure 16: WS0921

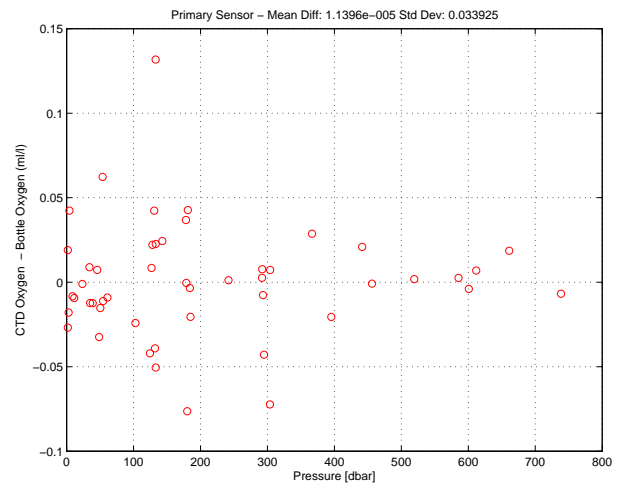
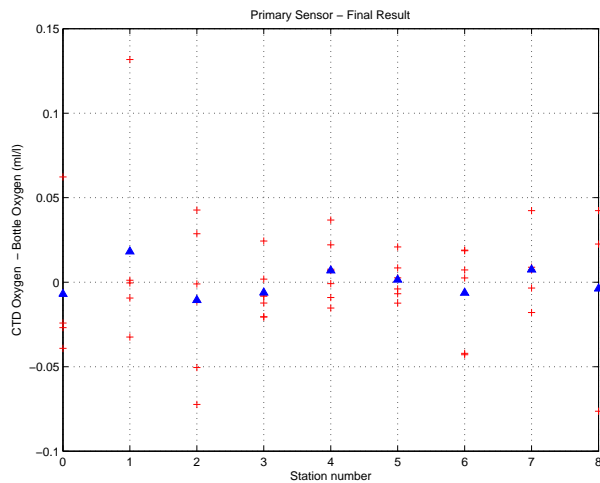
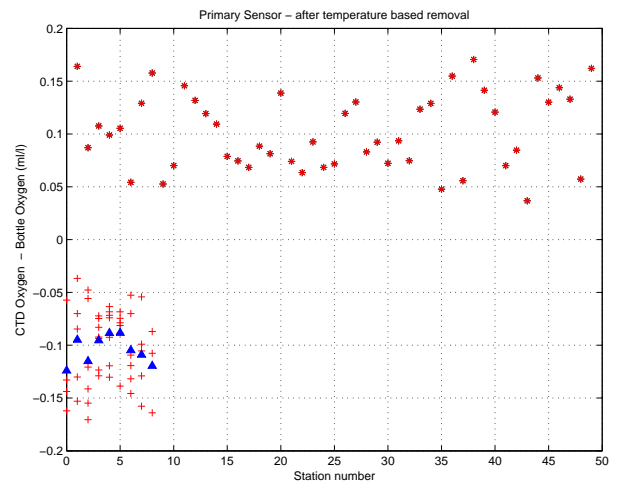
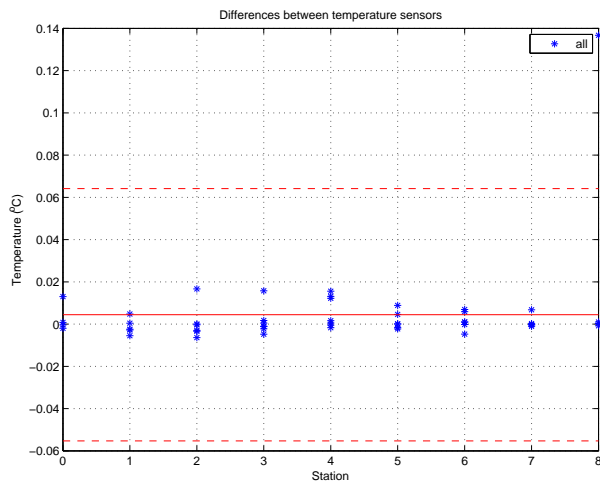
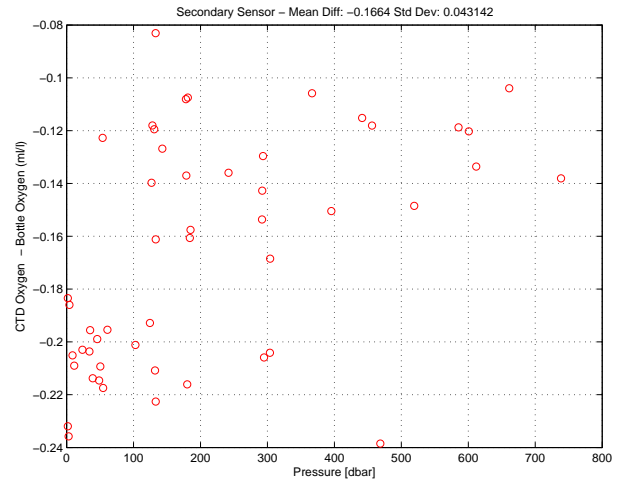
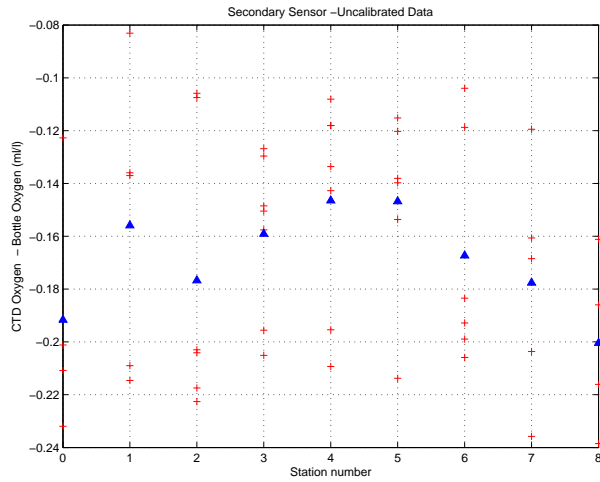


Figure 17: WS0921. Oxygen Calibration

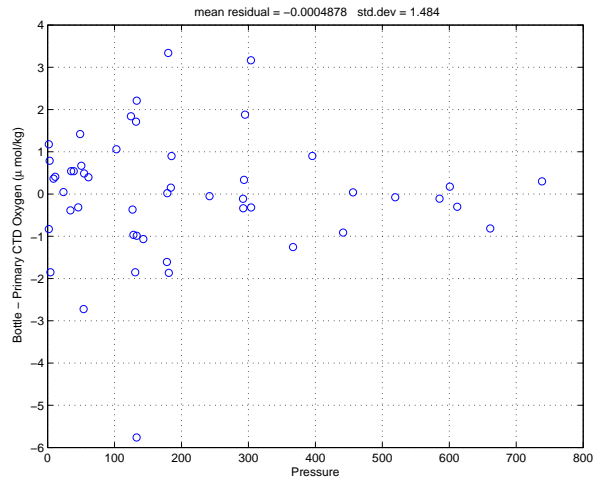
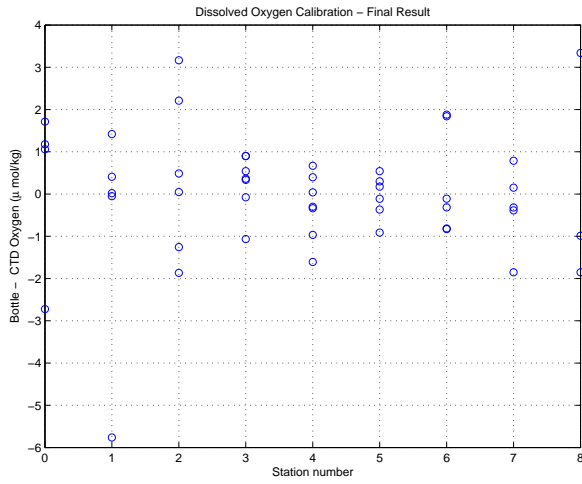


Figure 18: WS0921. Oxygen Calibration (cont.)

Florida Straits R/V FG Walton Smith
 CTD Station 0 (CTD000)
 Latitude 27.000 N Longitude 79.931 W
 24-Nov-2009 13:41 Z

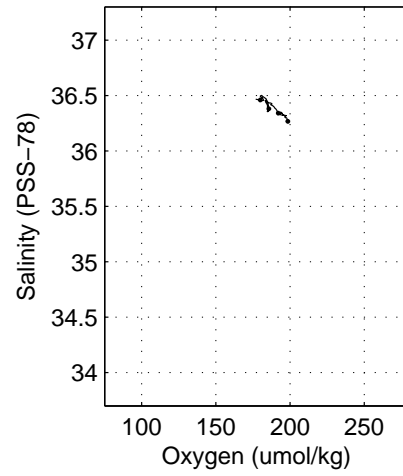
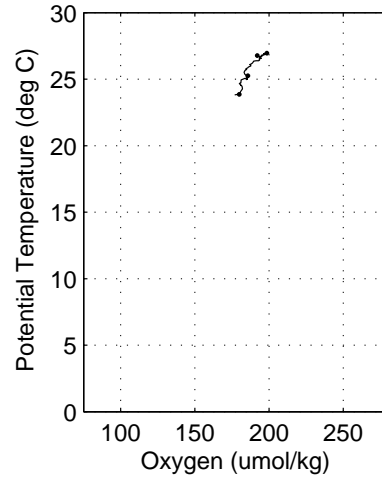
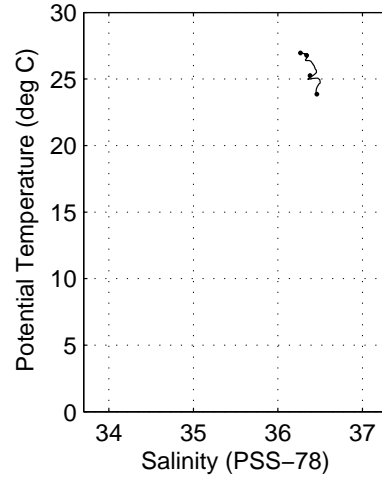
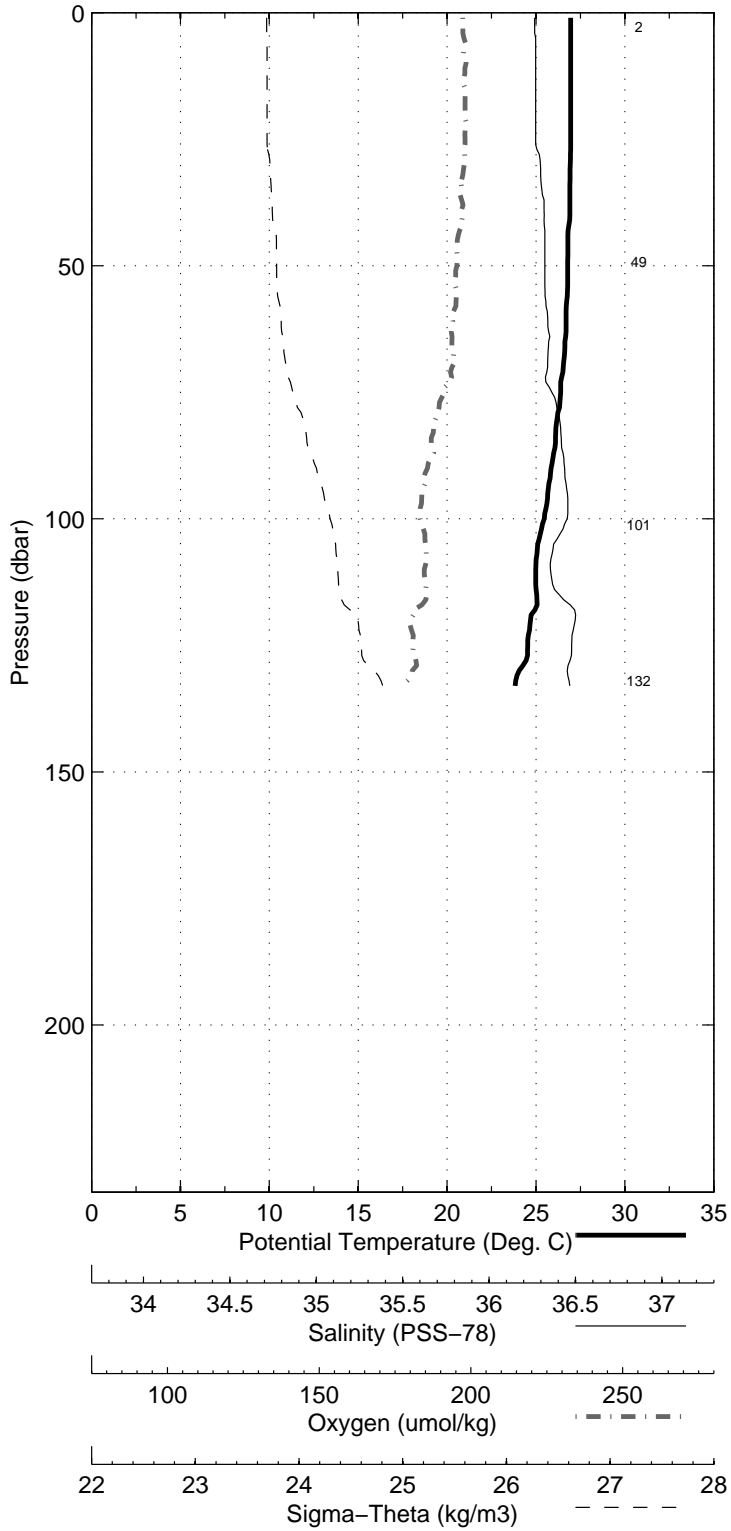


Figure 19: WS0921

Florida Straits R/V FG Walton Smith
 CTD Station 1 (CTD001)
 Latitude 27.002 N Longitude 79.868 W
 24-Nov-2009 12:32 Z

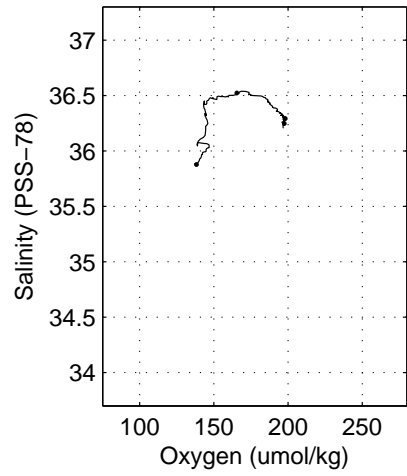
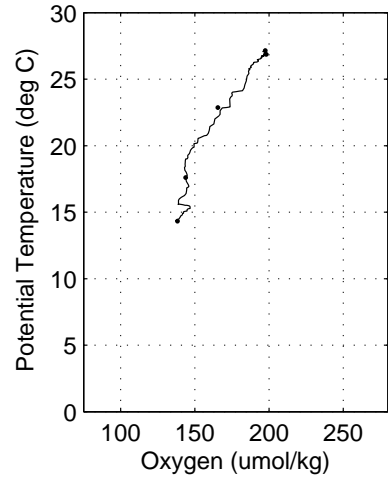
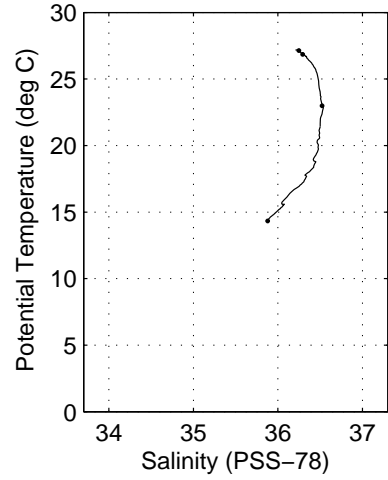


Figure 20: WS0921

Florida Straits R/V FG Walton Smith
 CTD Station 2 (CTD002)
 Latitude 27.003 N Longitude 79.784 W
 24-Nov-2009 10:38 Z

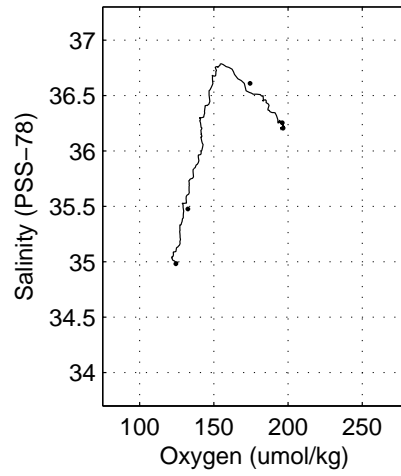
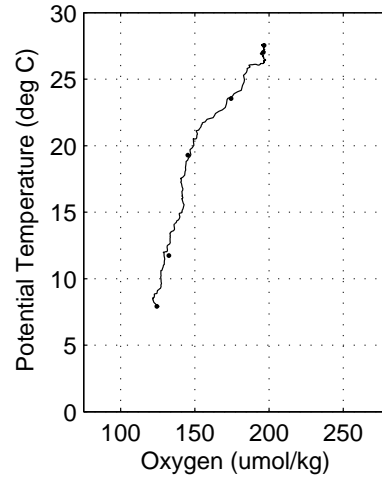
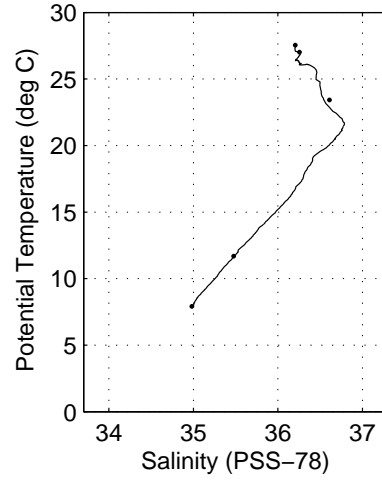
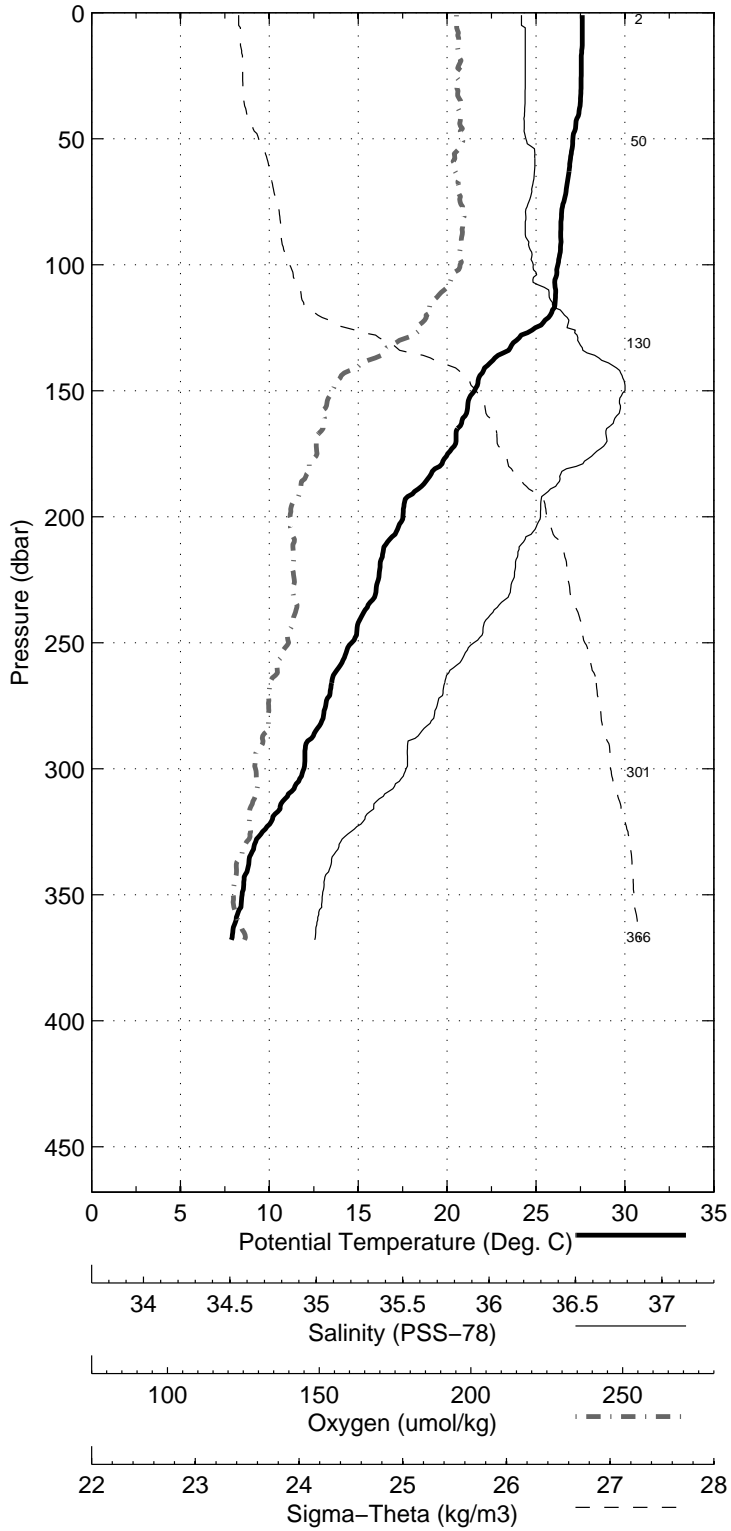


Figure 21: WS0921

Florida Straits R/V FG Walton Smith
 CTD Station 3 (CTD003)
 Latitude 27.001 N Longitude 79.684 W
 24-Nov-2009 08:50 Z

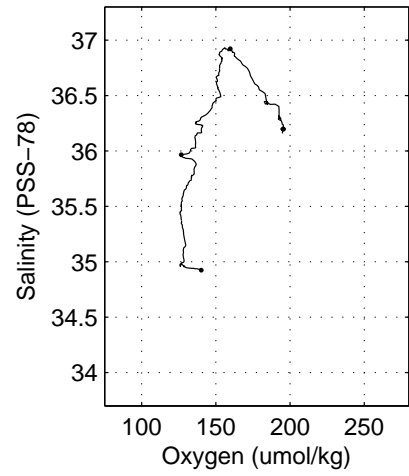
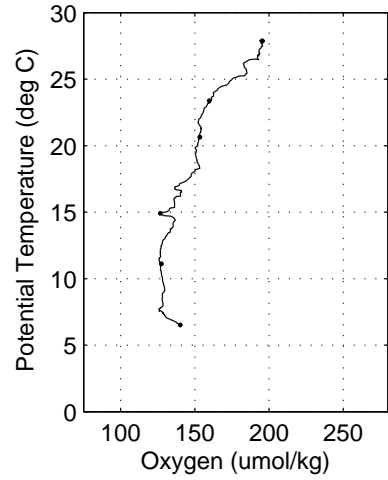
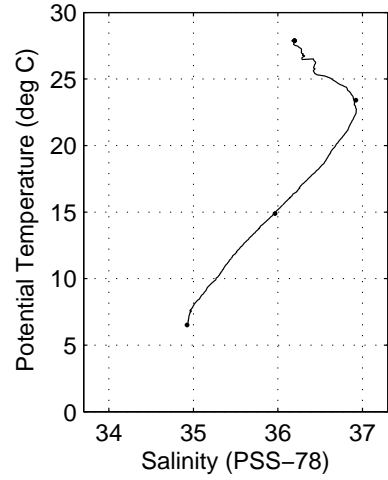
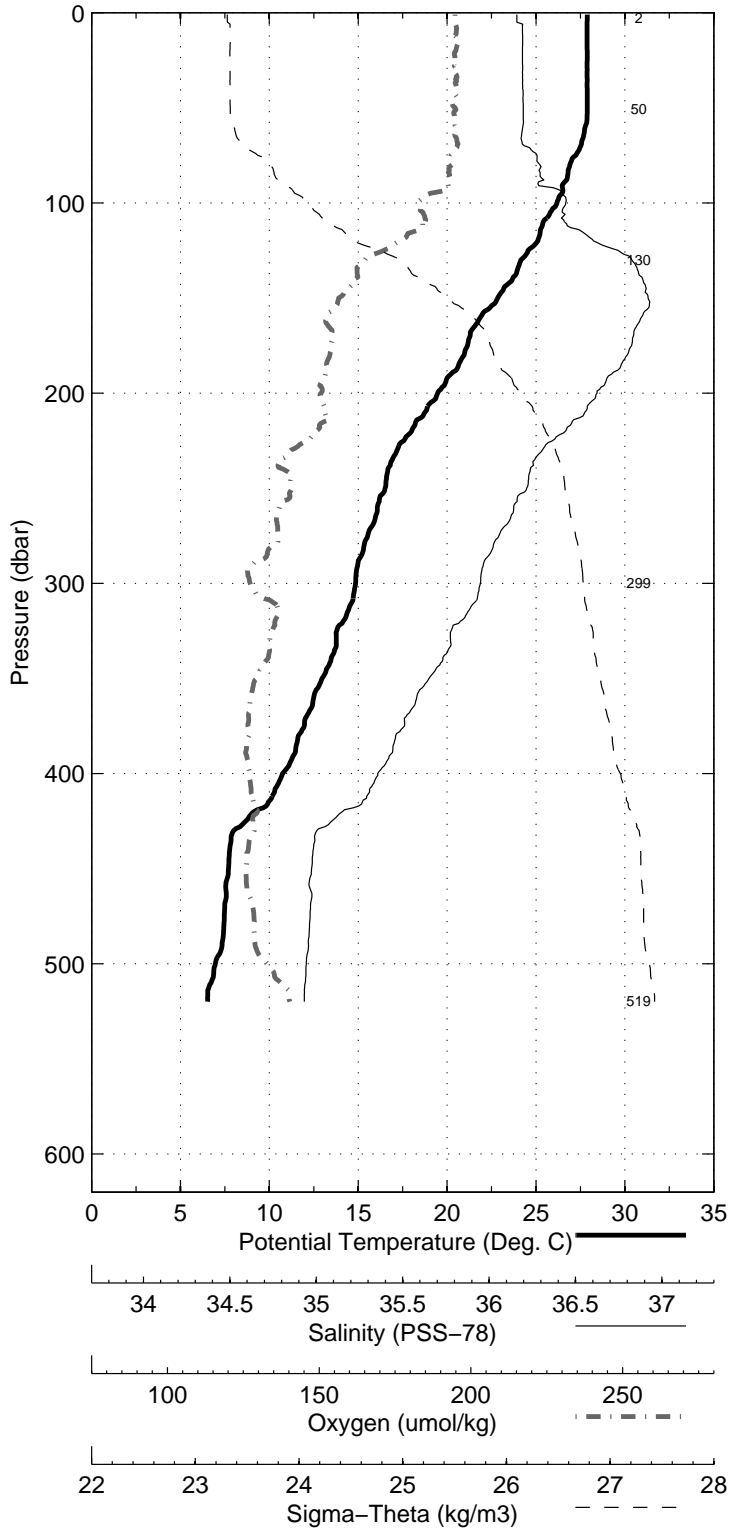


Figure 22: WS0921

Florida Straits R/V FG Walton Smith
 CTD Station 4 (CTD004)
 Latitude 27.003 N Longitude 79.616 W
 24-Nov-2009 07:07 Z

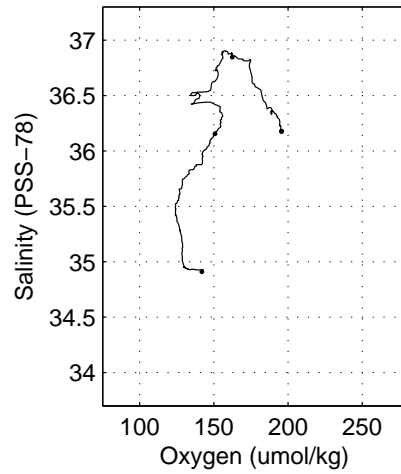
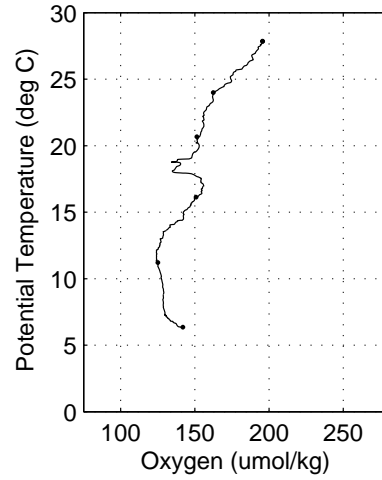
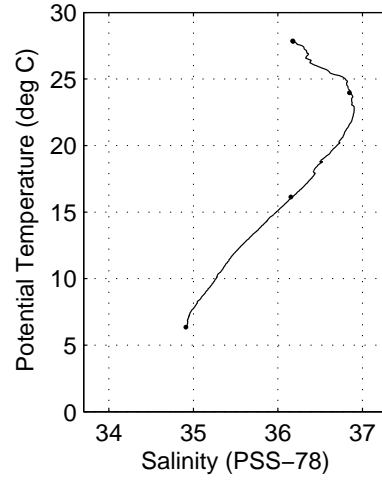
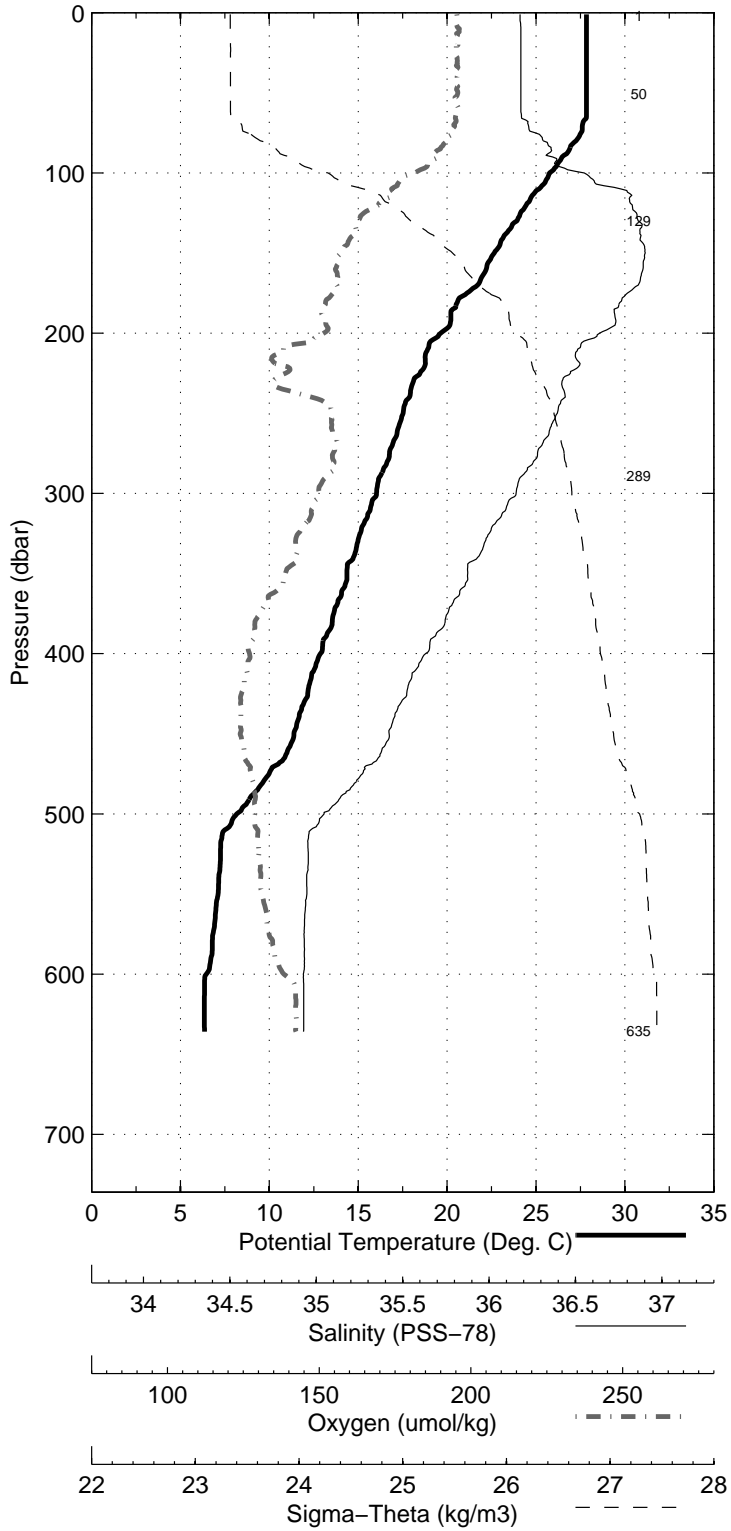


Figure 23: WS0921

Florida Straits R/V FG Walton Smith
 CTD Station 5 (CTD005)
 Latitude 27.003 N Longitude 79.498 W
 24-Nov-2009 04:56 Z

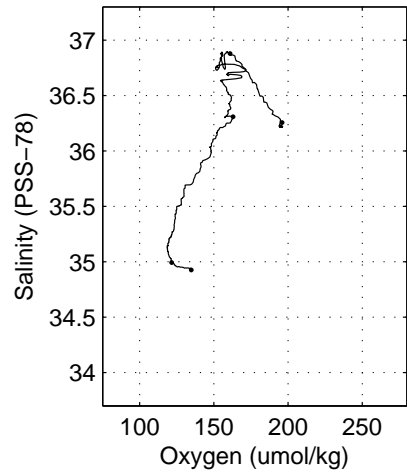
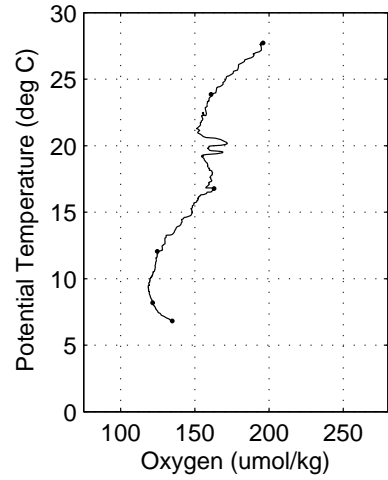
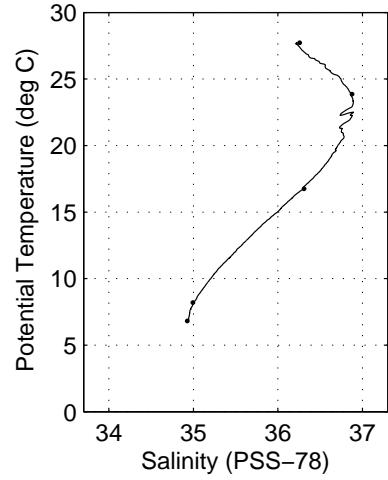
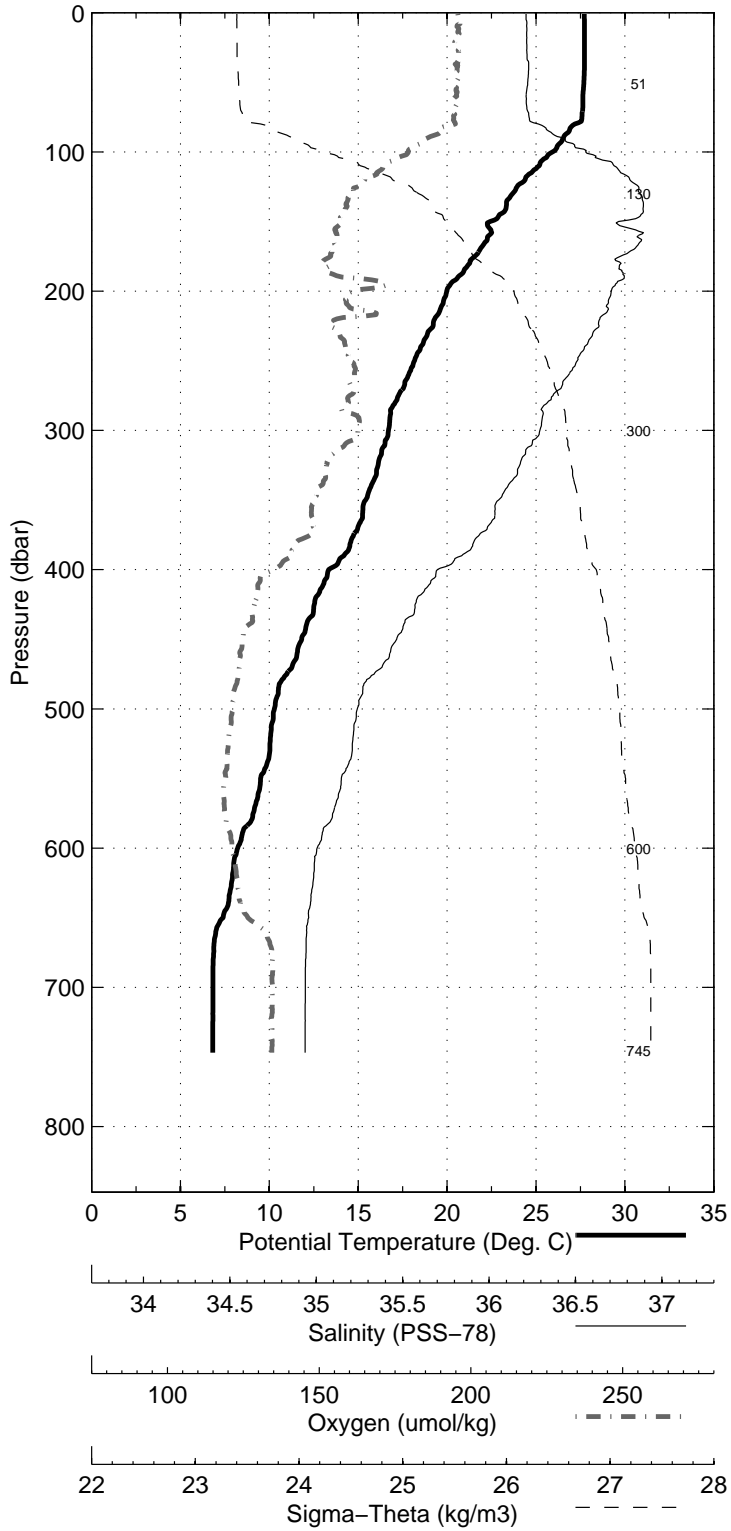


Figure 24: WS0921

Florida Straits R/V FG Walton Smith
 CTD Station 6 (CTD006)
 Latitude 27.002 N Longitude 79.384 W
 24-Nov-2009 03:03 Z

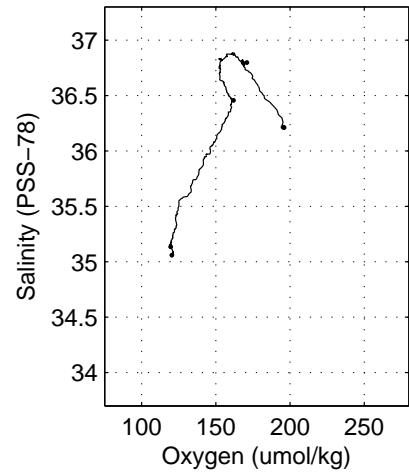
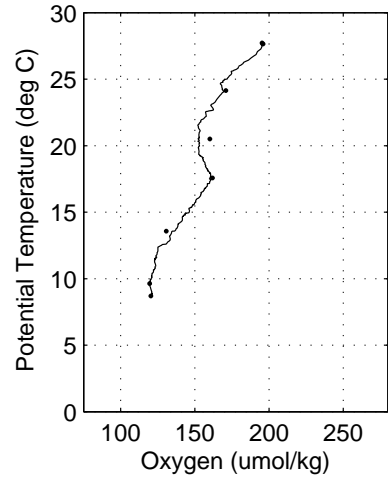
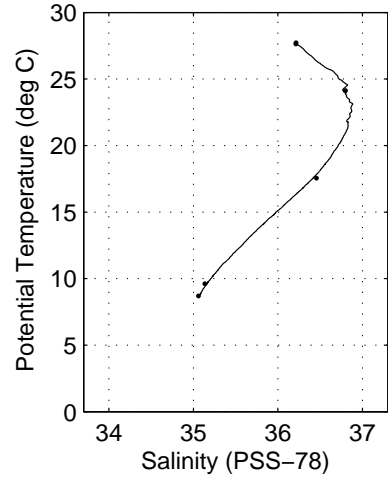
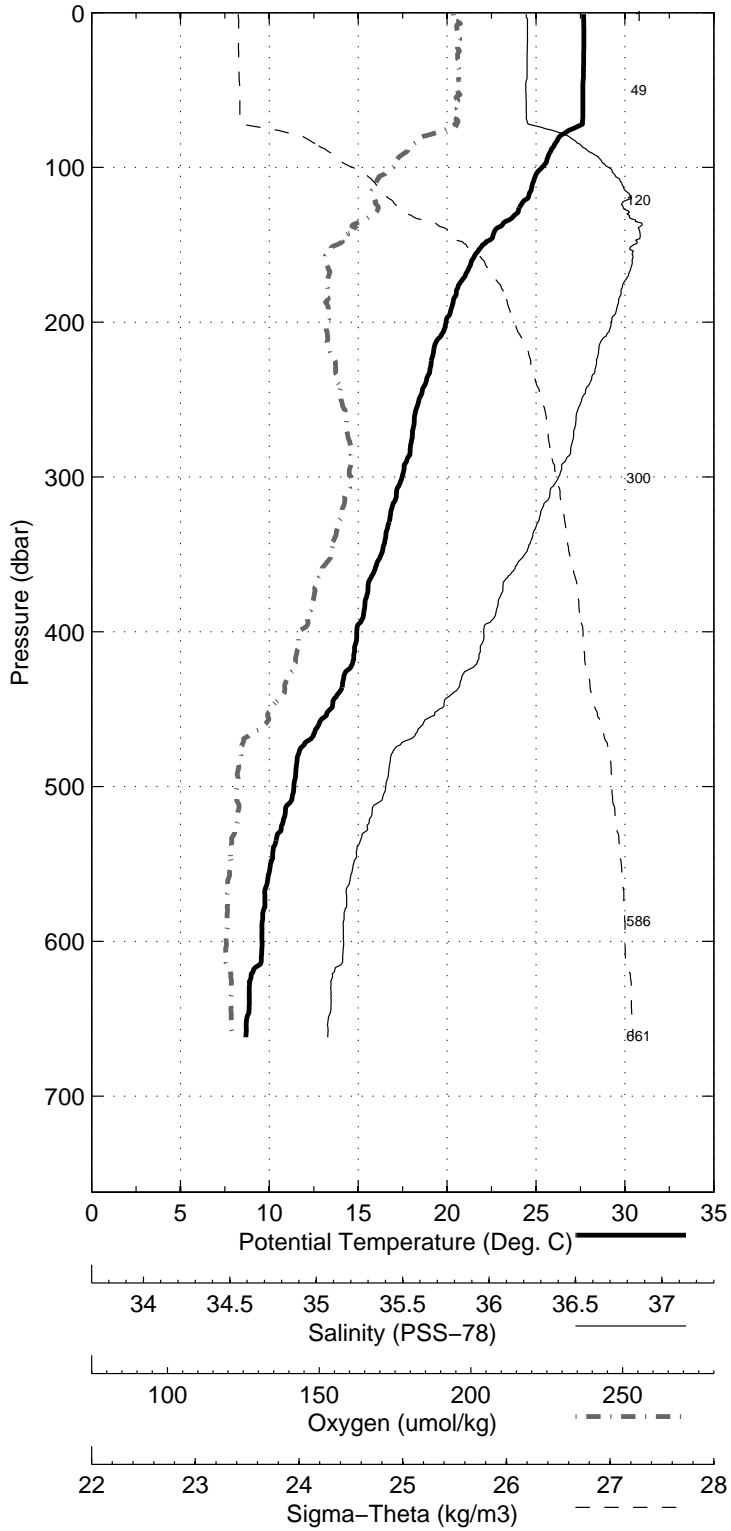


Figure 25: WS0921

Florida Straits R/V FG Walton Smith
CTD Station 7 (CTD007)
Latitude 27.003 N Longitude 79.287 W
24-Nov-2009 01:09 Z

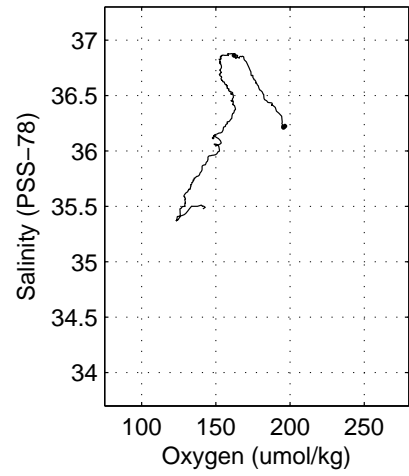
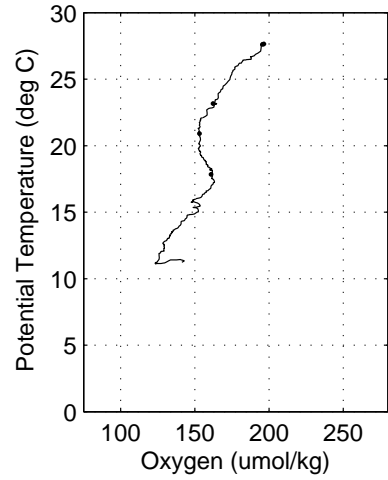
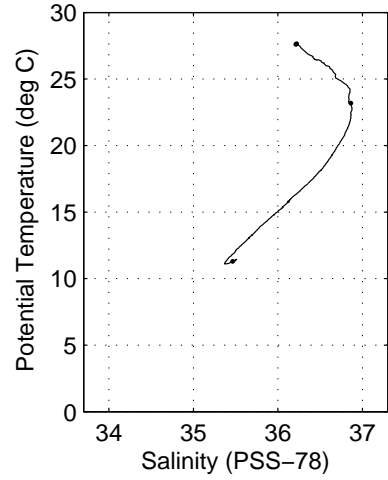
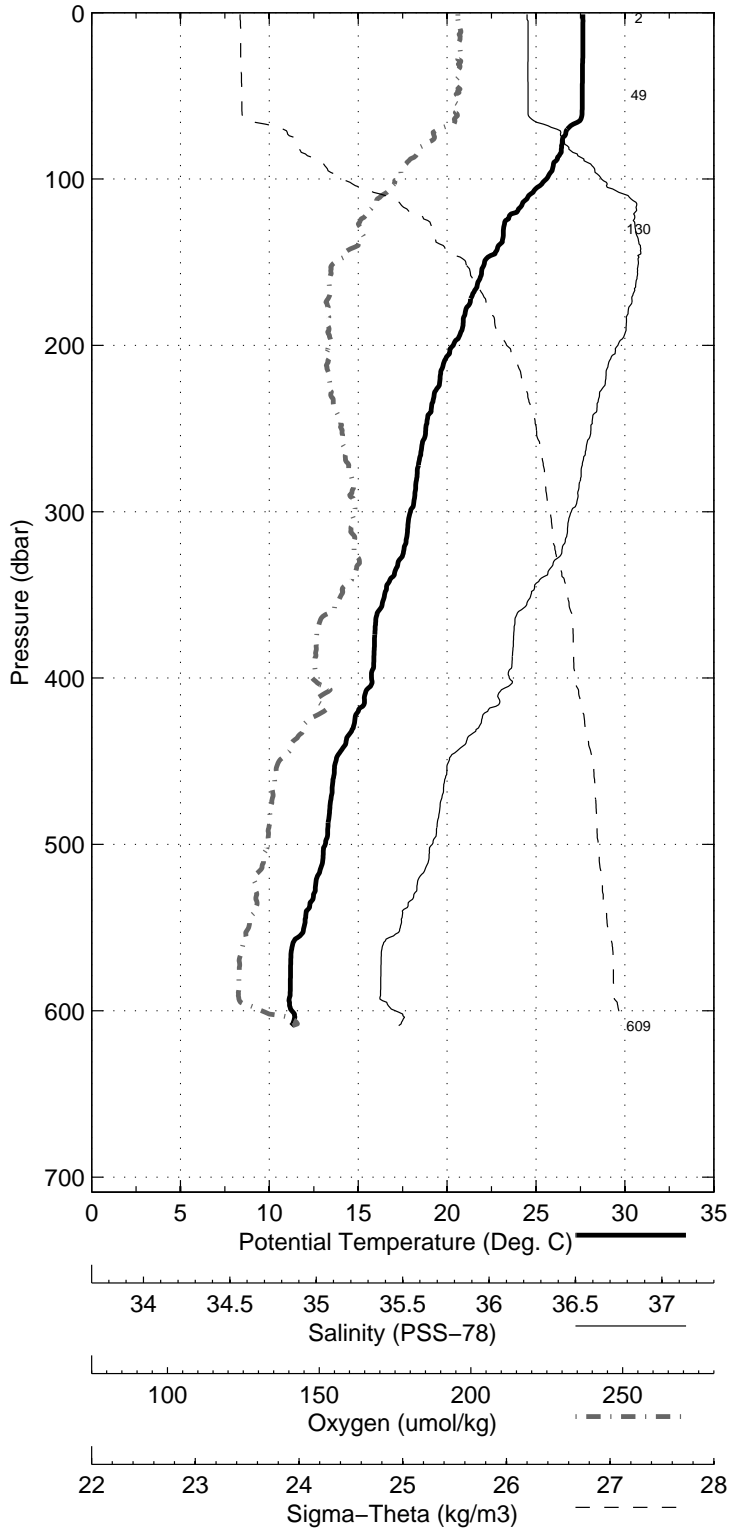


Figure 26: WS0921

Florida Straits R/V FG Walton Smith
 CTD Station 8 (CTD008)
 Latitude 27.001 N Longitude 79.201 W
 23-Nov-2009 23:36 Z

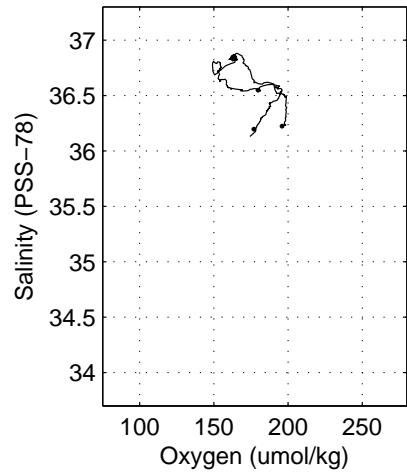
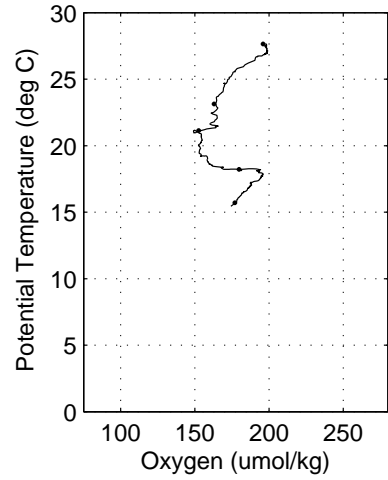
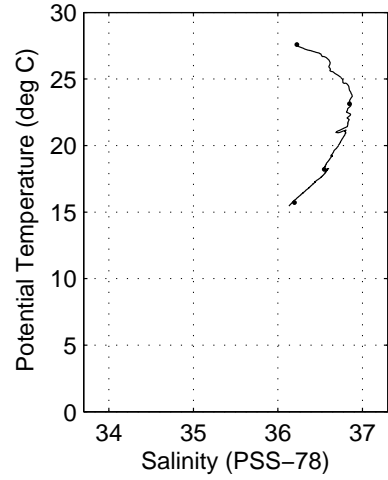
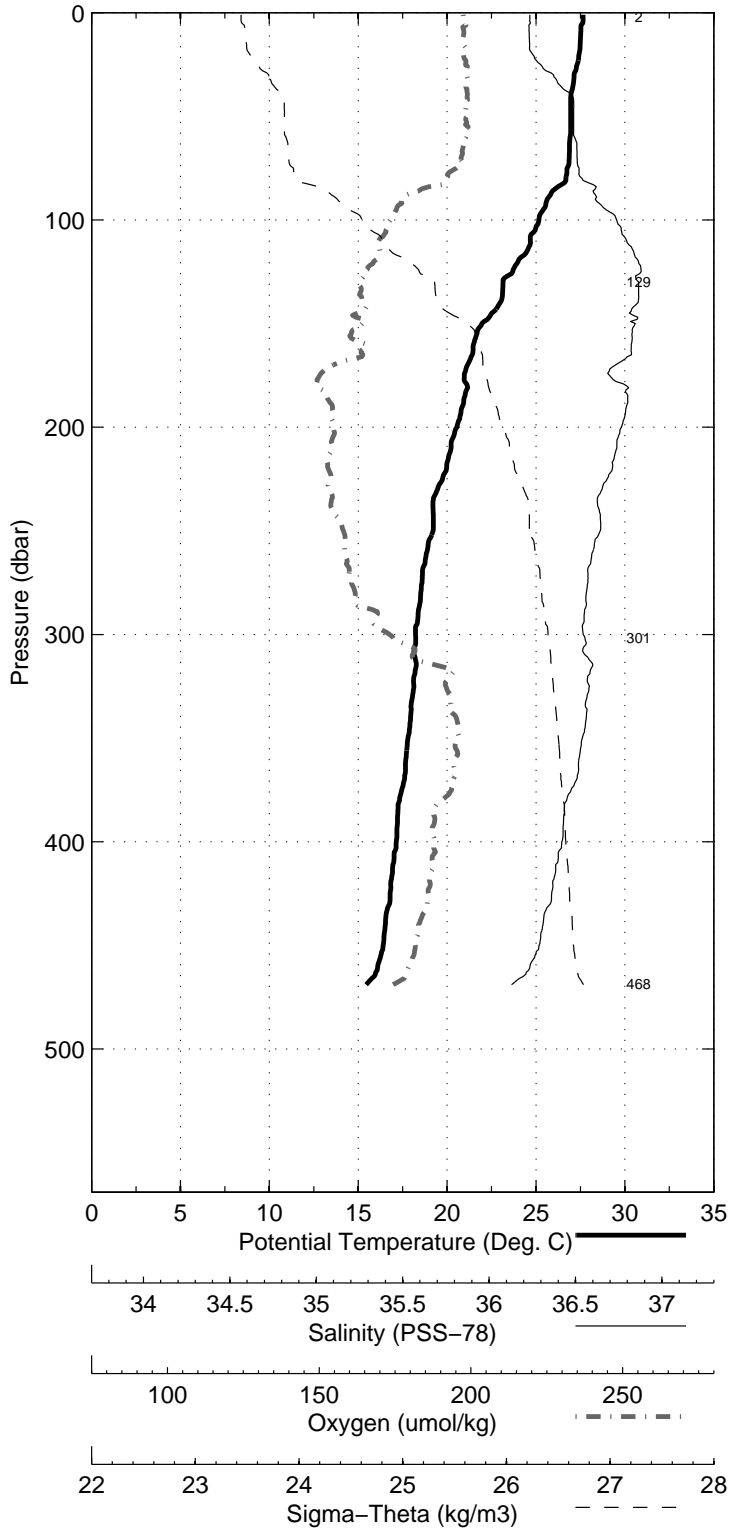


Figure 27: WS0921