

Straits of Florida: CTD data calibration report
NOAA/AOML: Western Boundary Time Series program

Cruise ID: WS0625

Cruise date: December, 2006

Rigoberto F. Garcia

Carlos A. Fonseca

Christopher S. Meinen

Molly O. Baringer

August 27, 2007

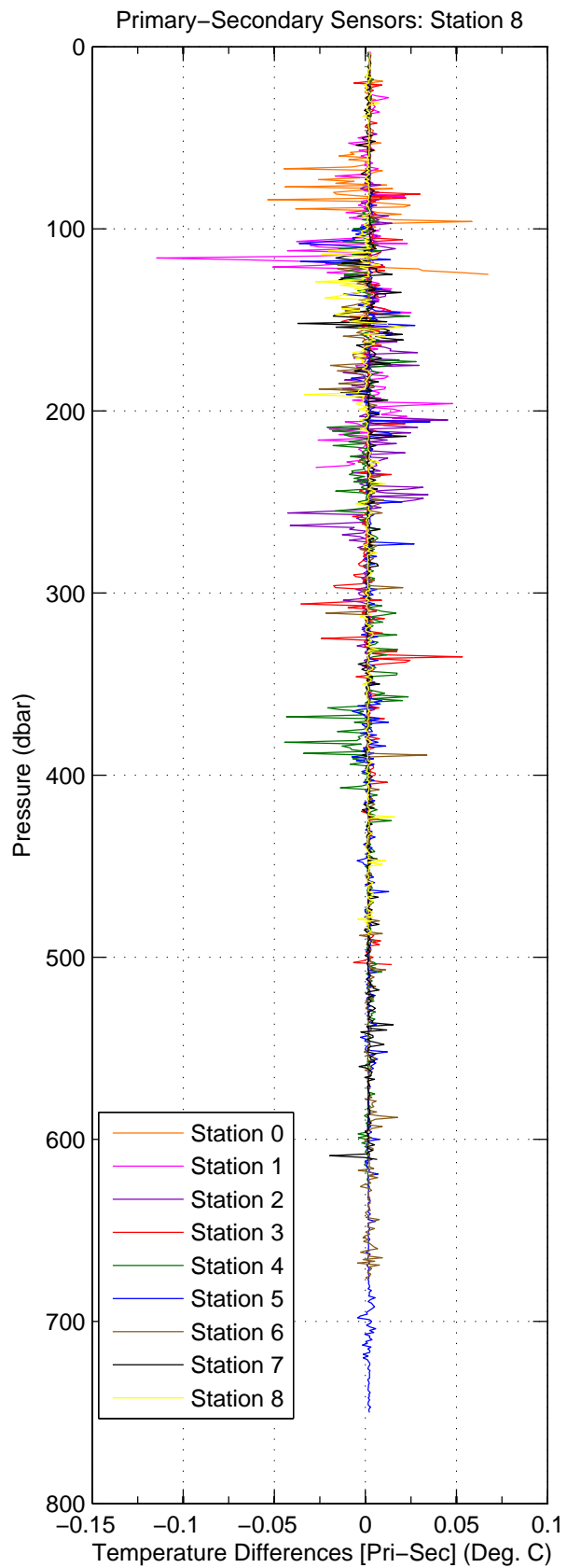
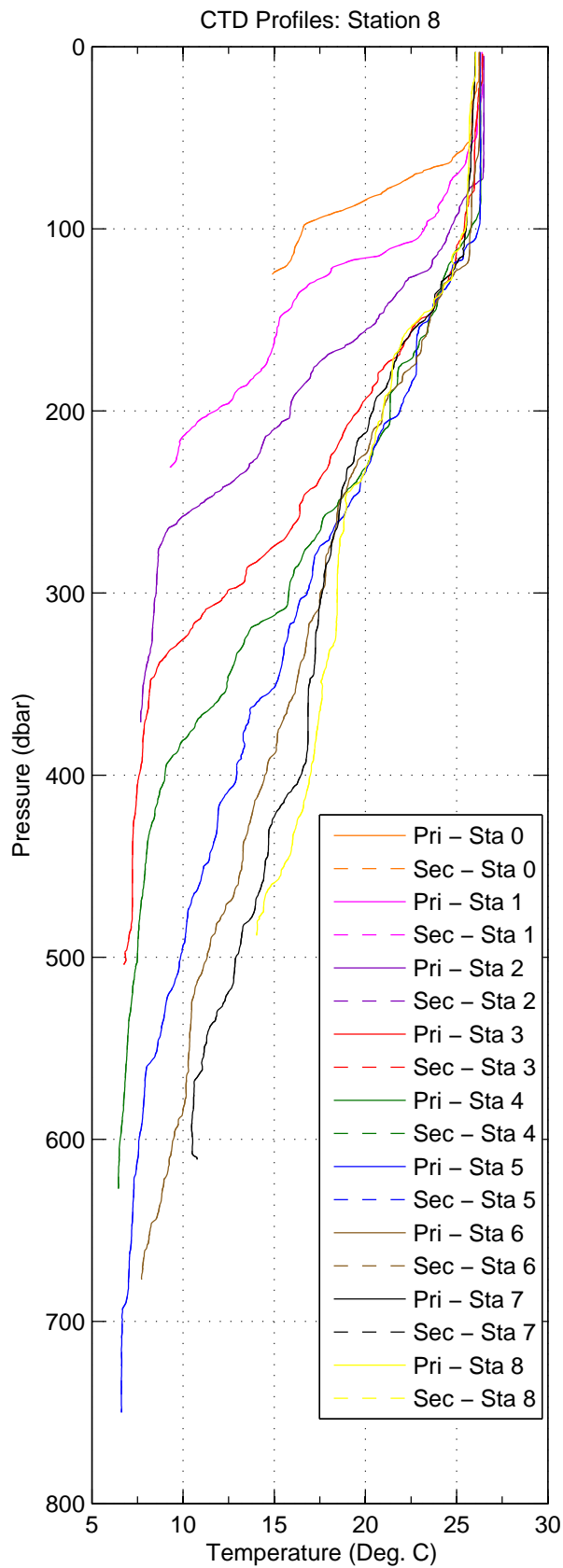


Figure 1: WS0625

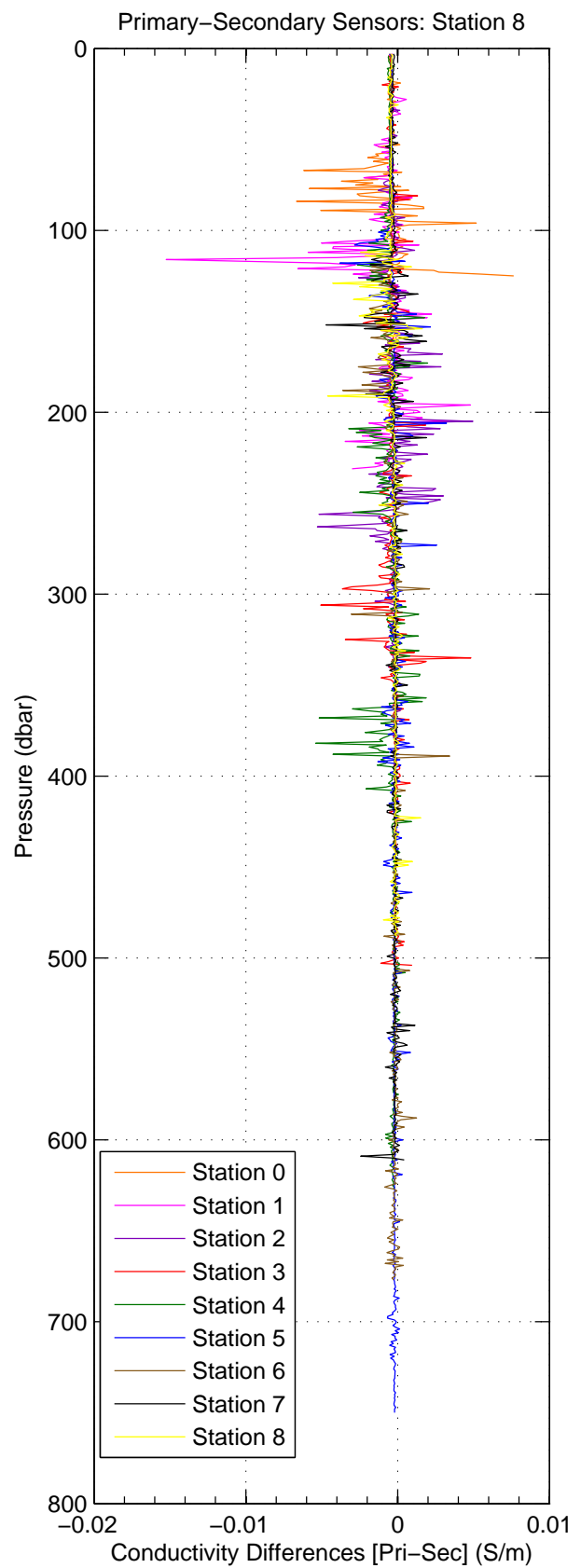
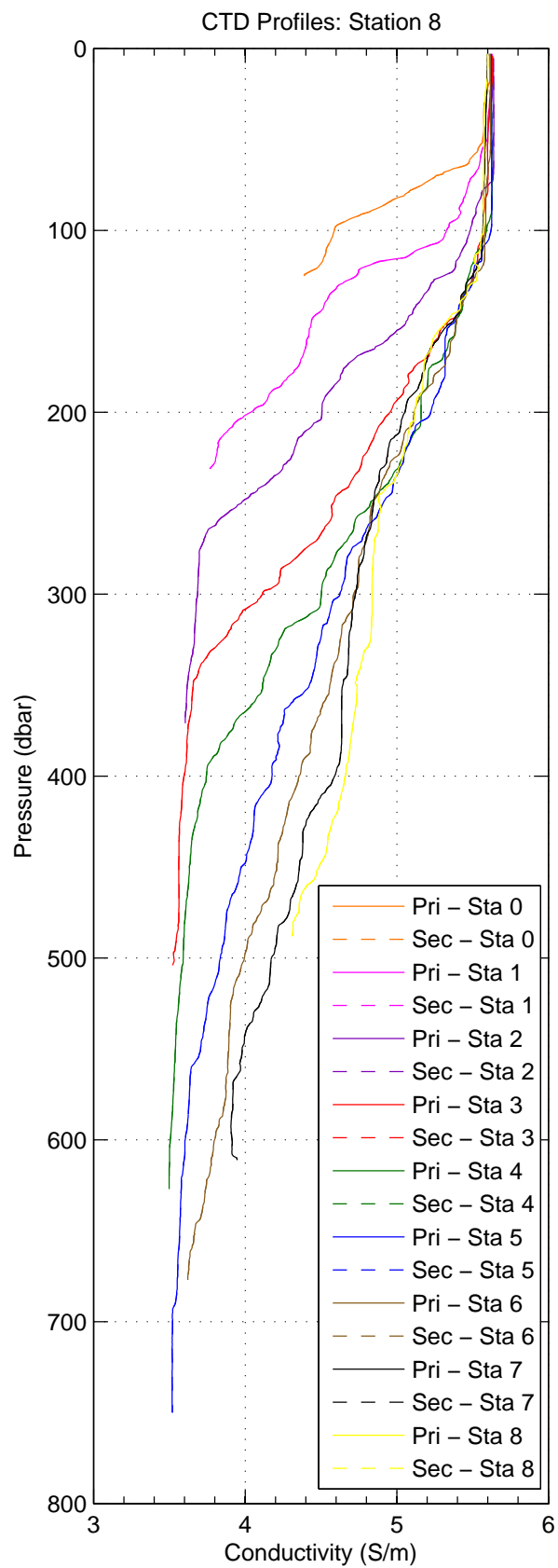


Figure 2: WS0625

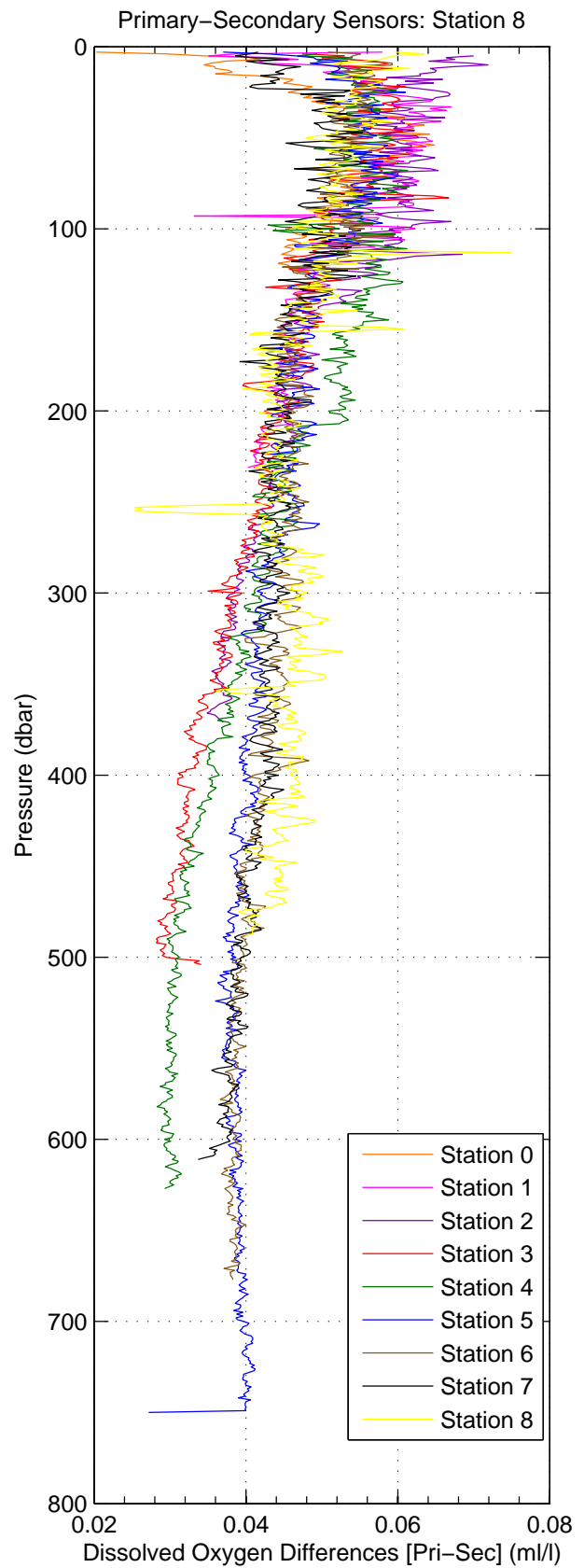
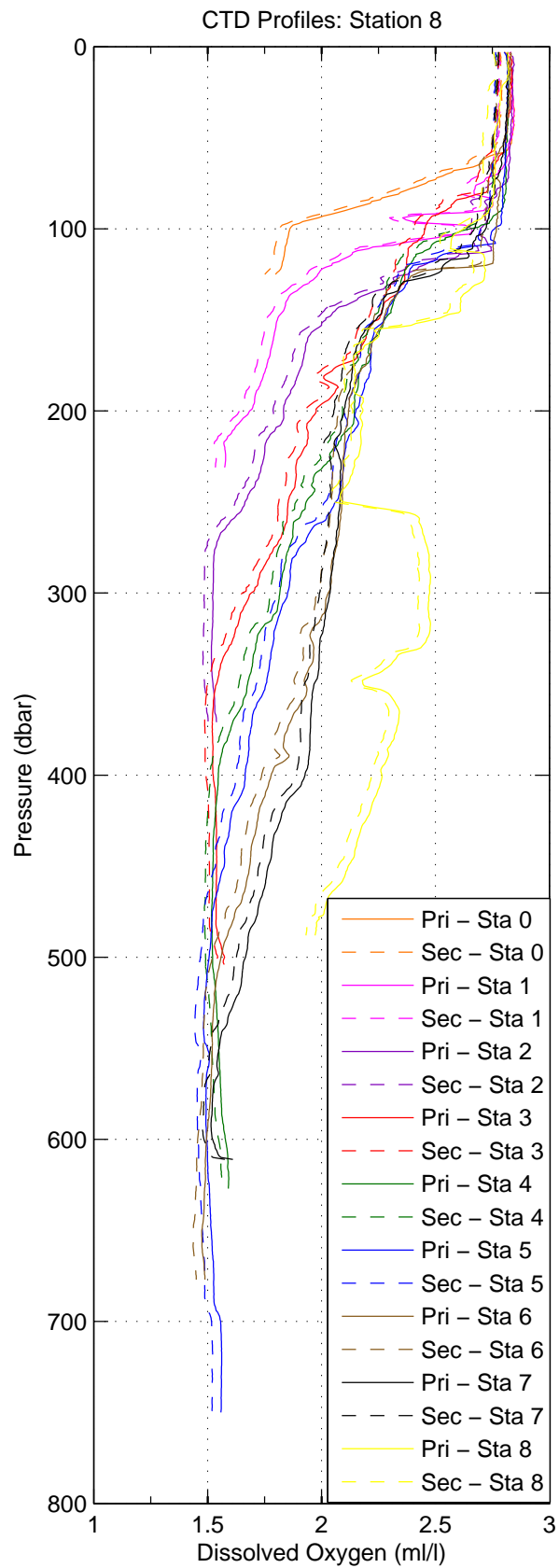


Figure 3: WS0625

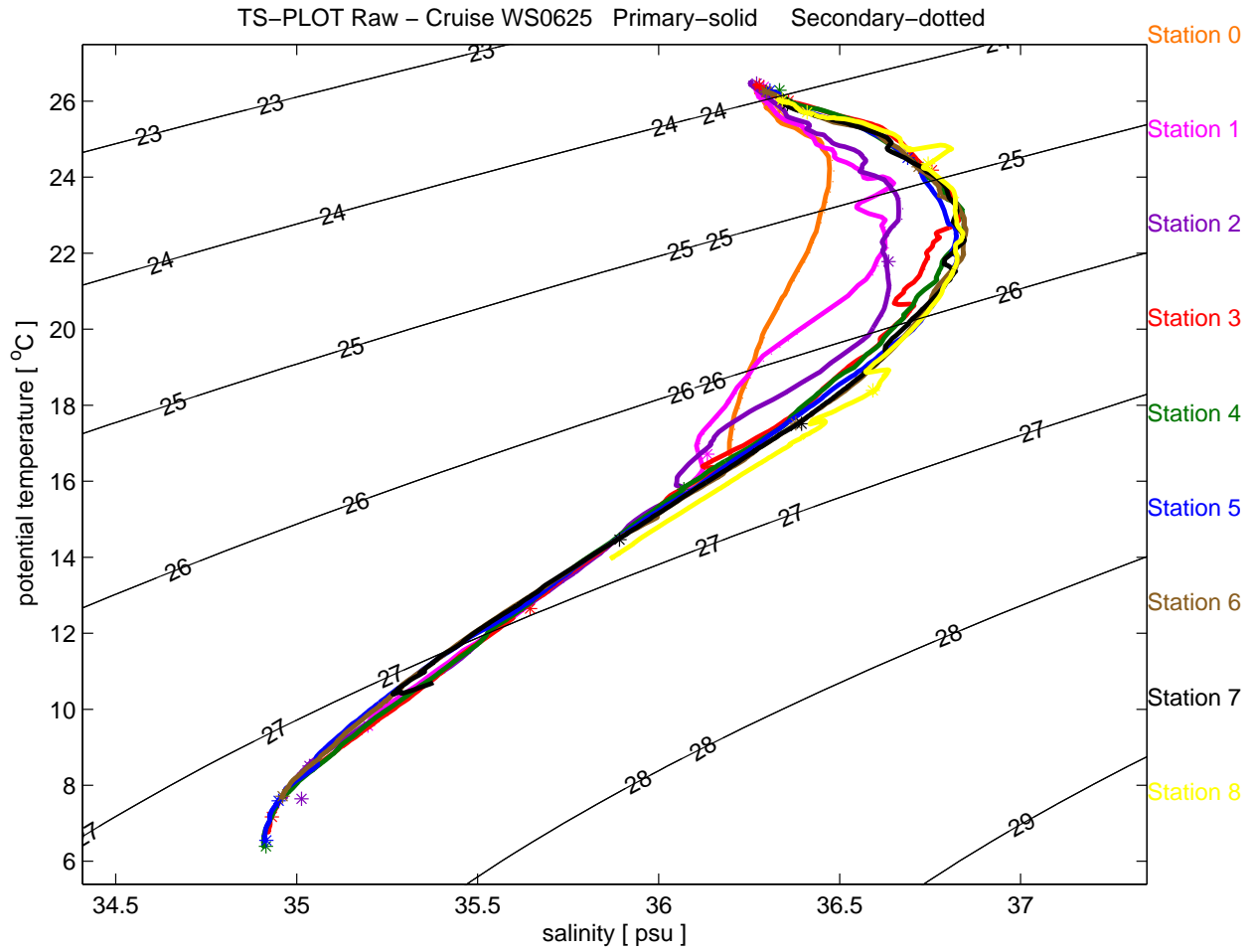


Figure 4: WS0625

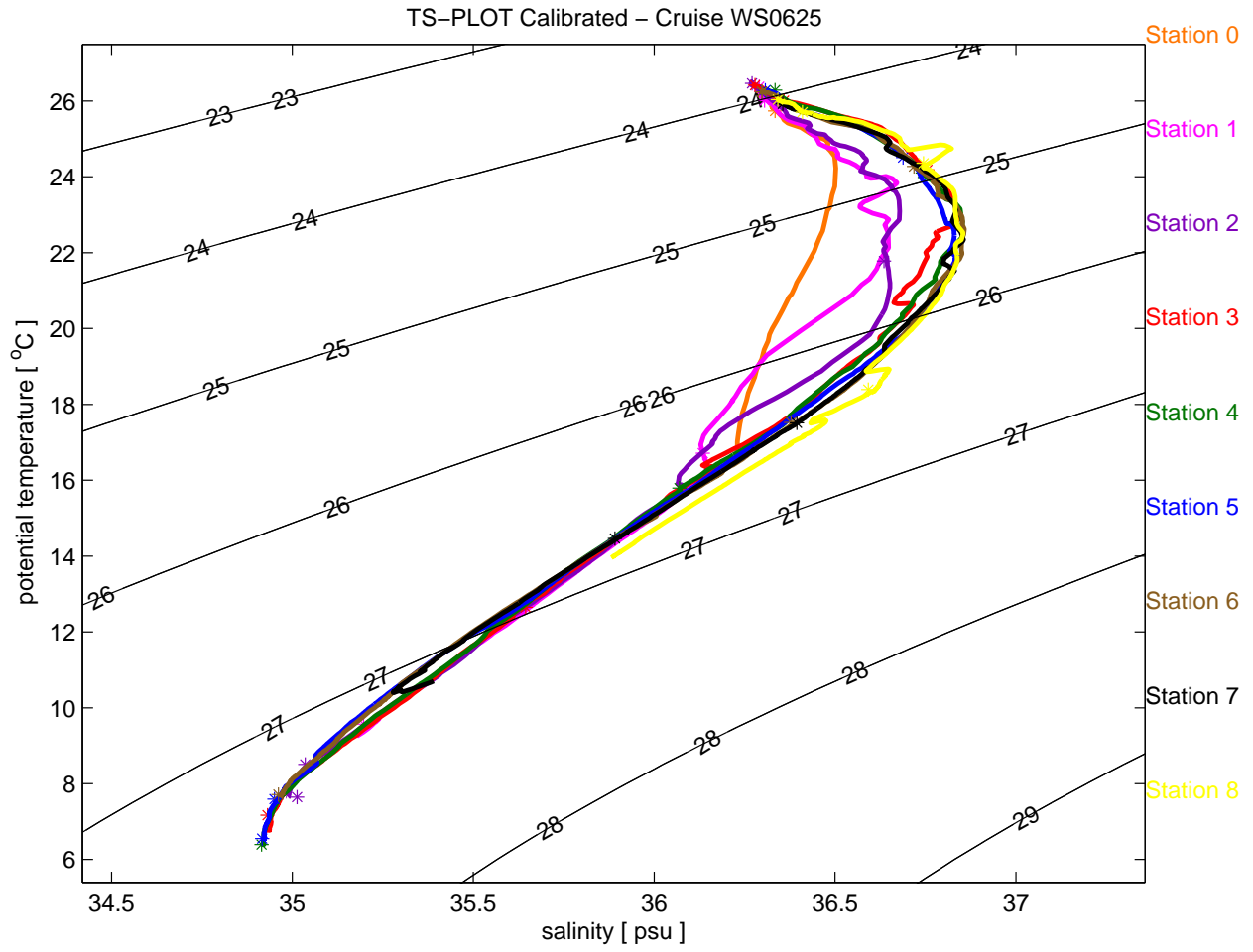


Figure 5: WS0625

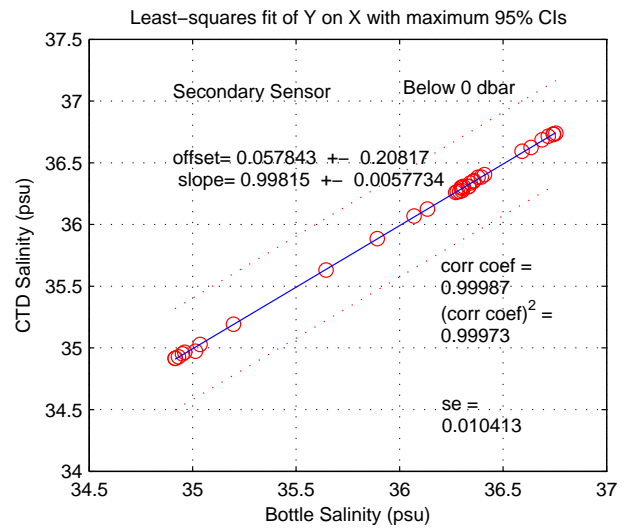
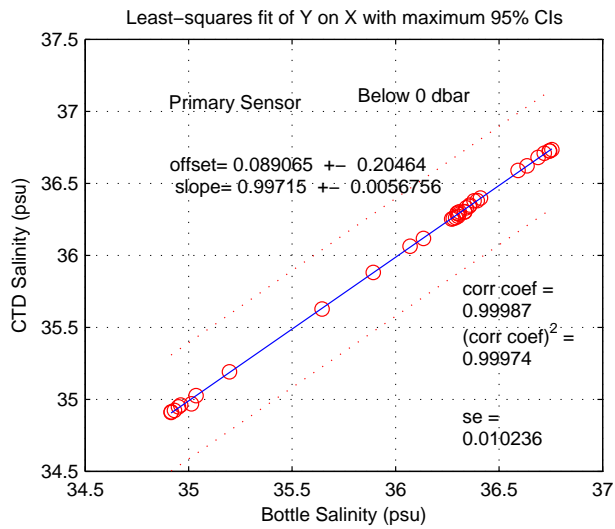
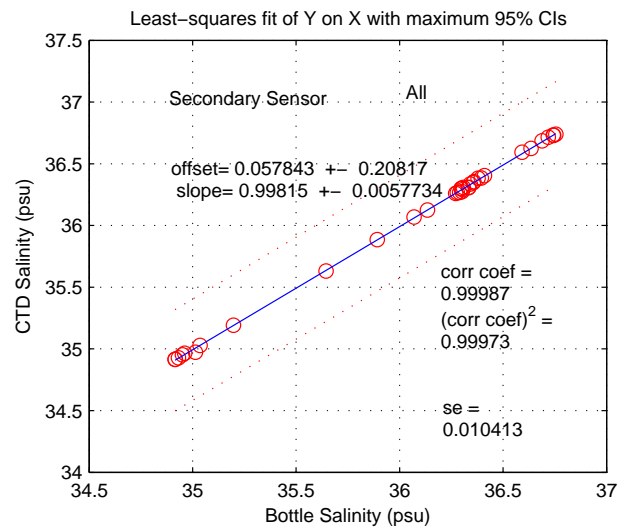
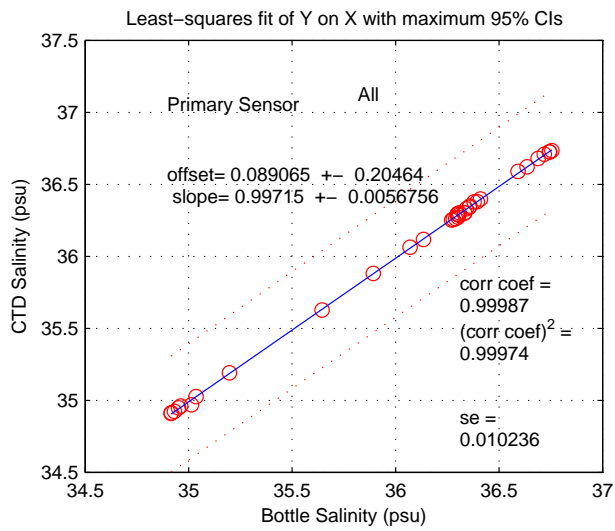
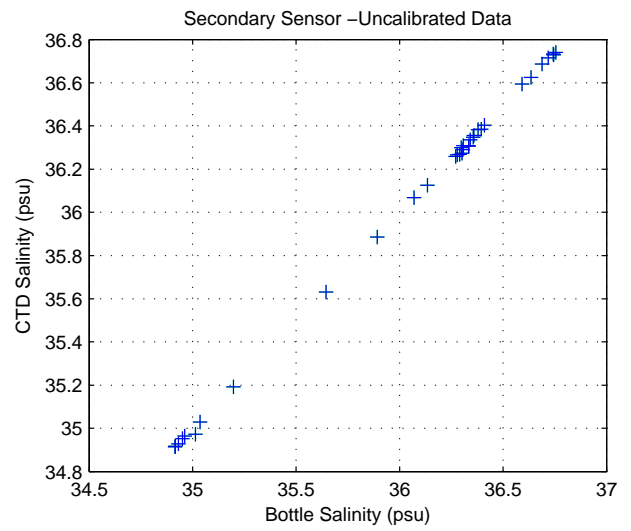
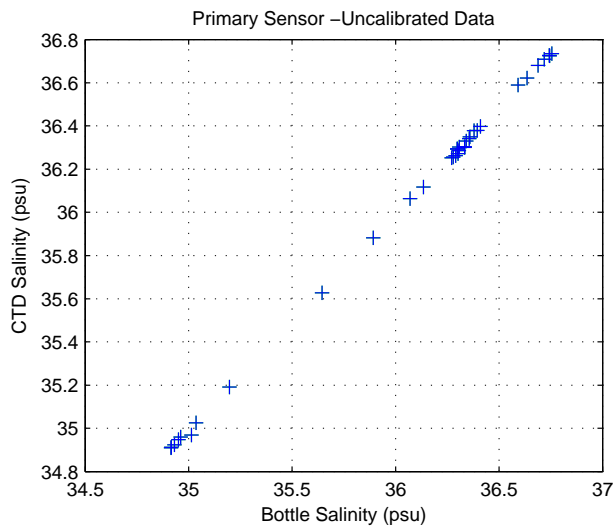


Figure 6: WS0625

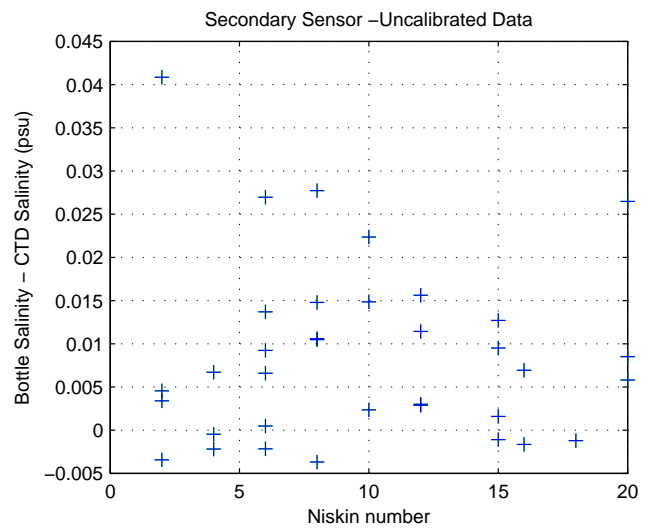
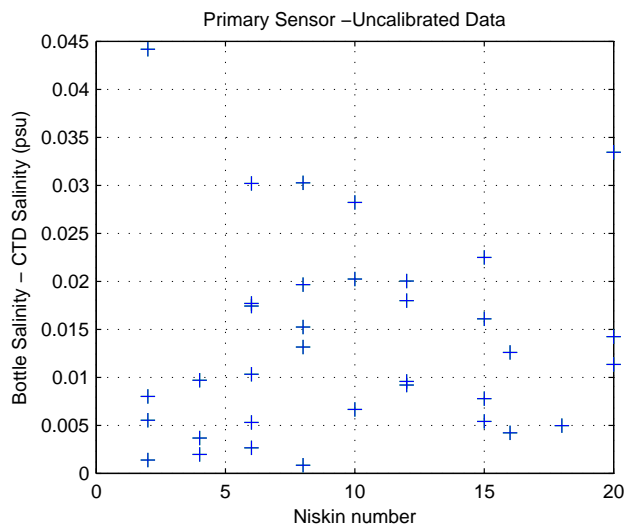
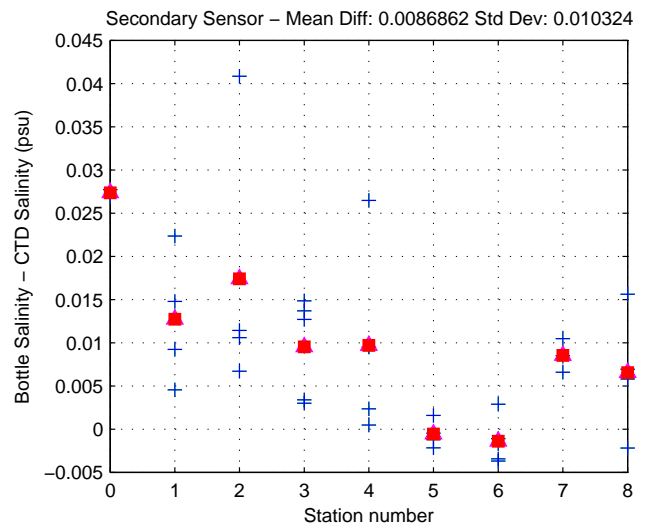
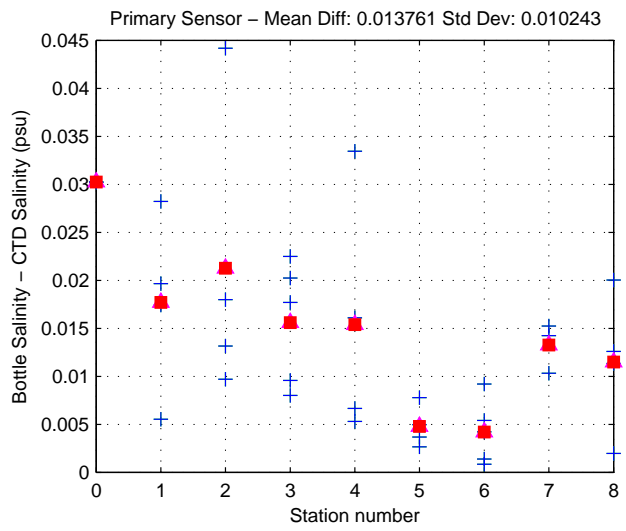
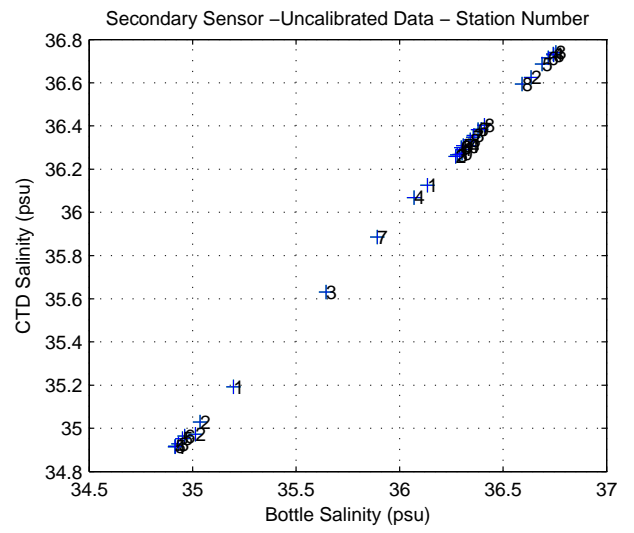
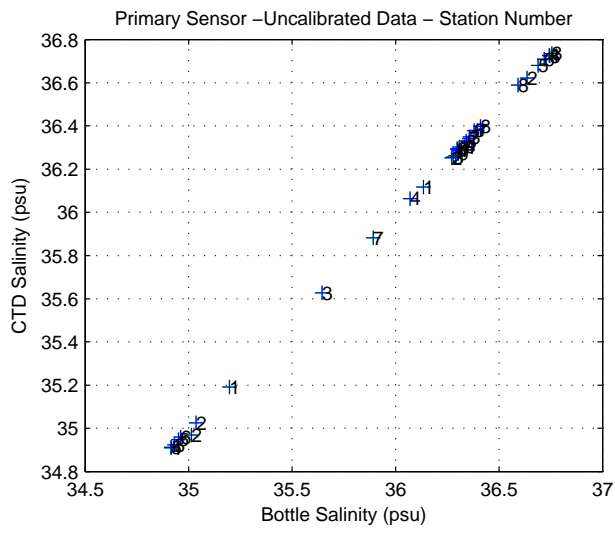


Figure 7: WS0625

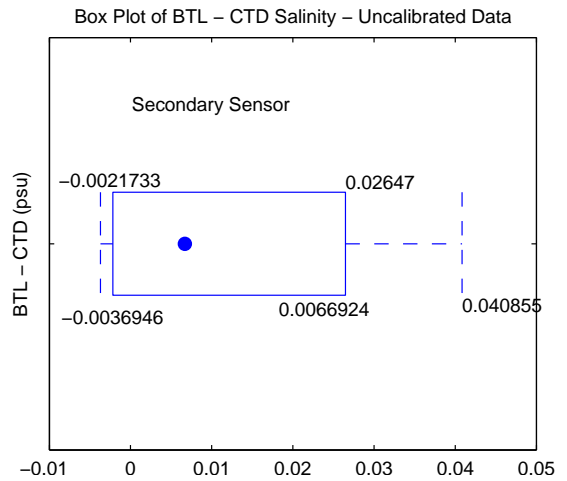
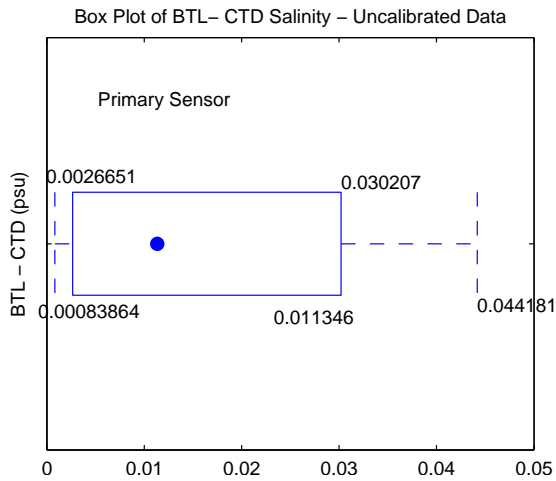
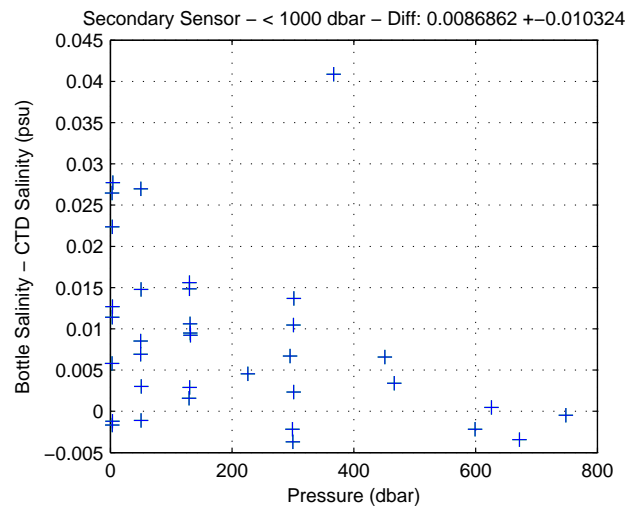
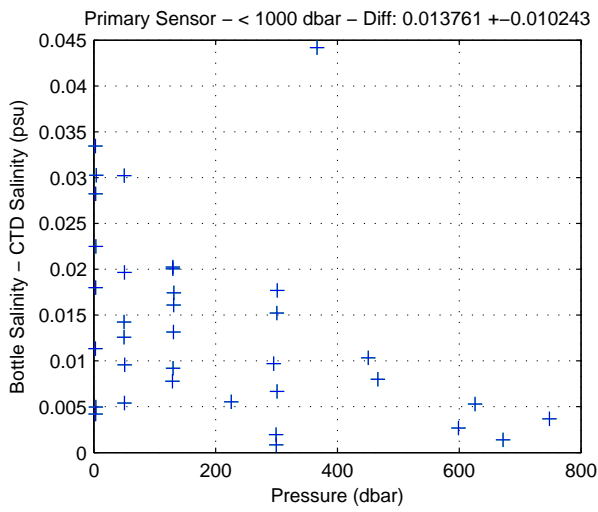
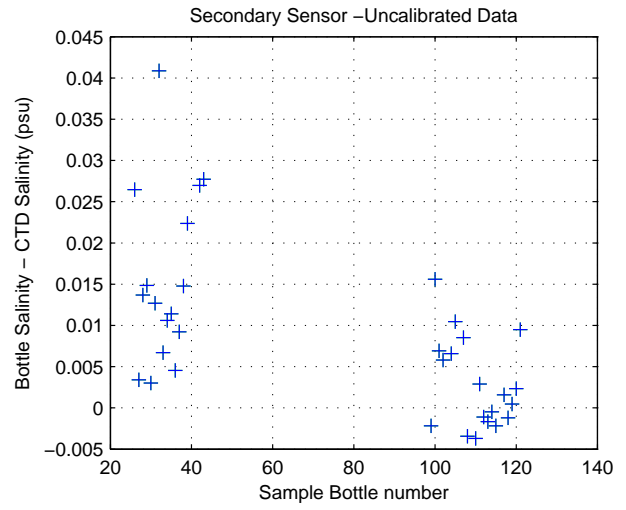
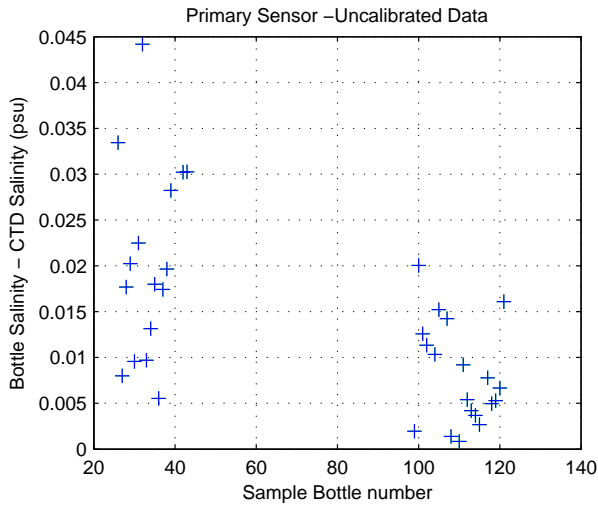


Figure 8: WS0625

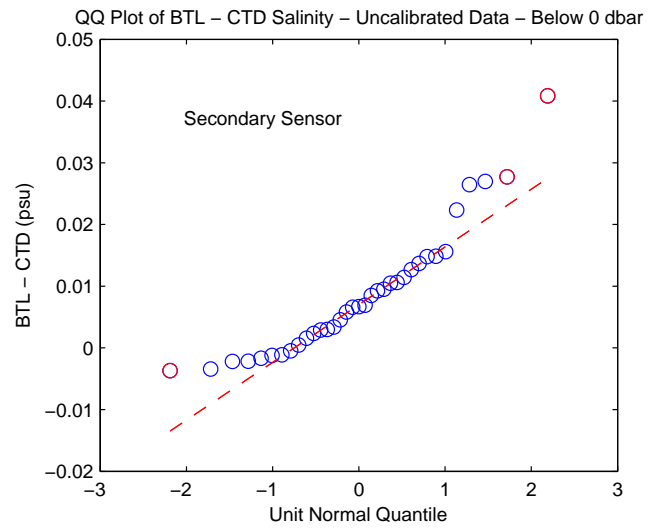
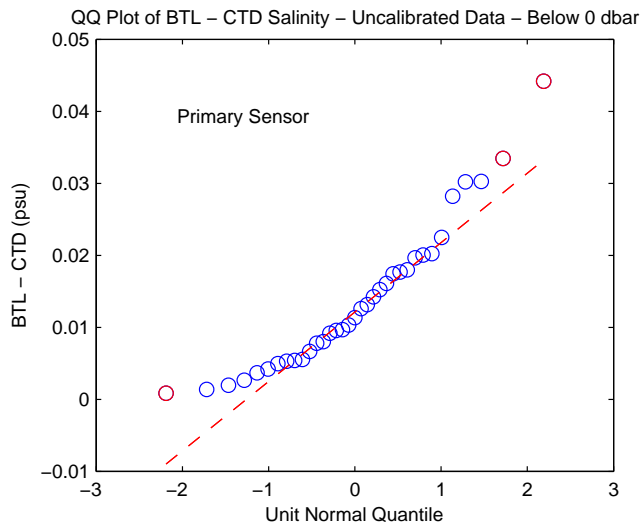
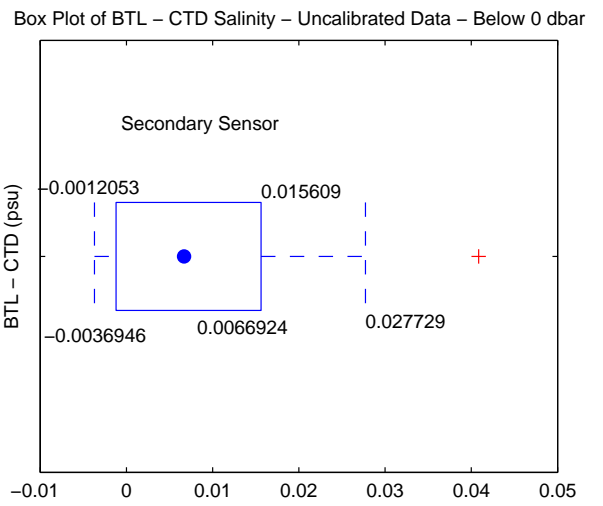
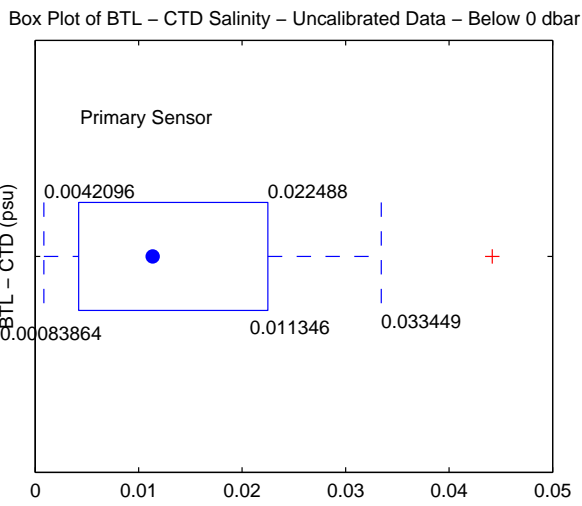
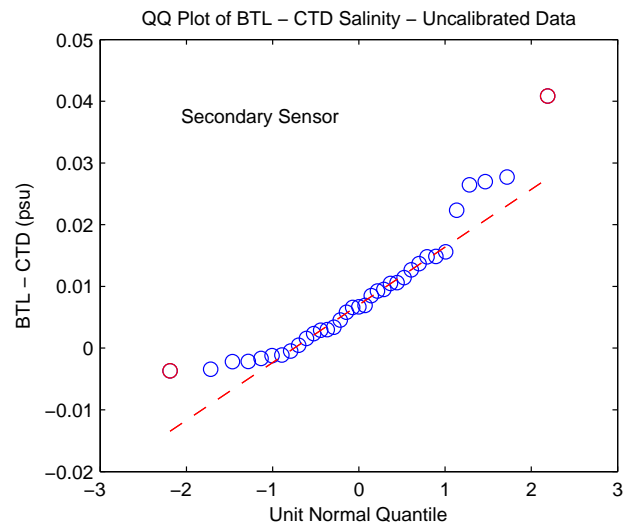
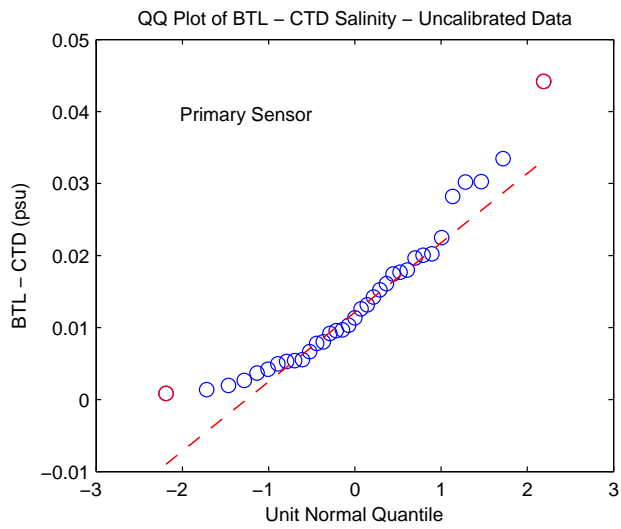


Figure 9: WS0625

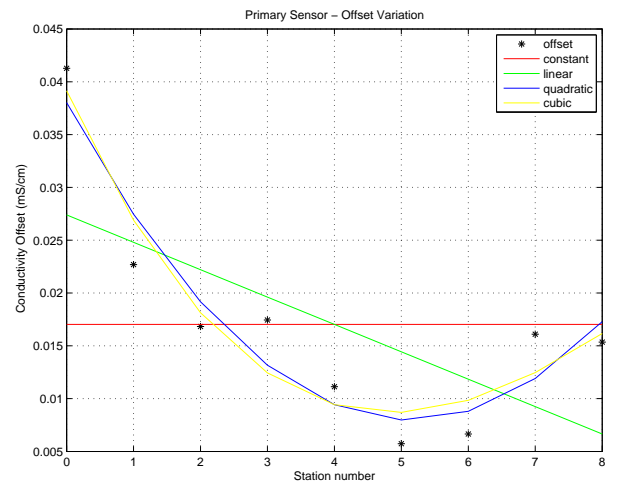
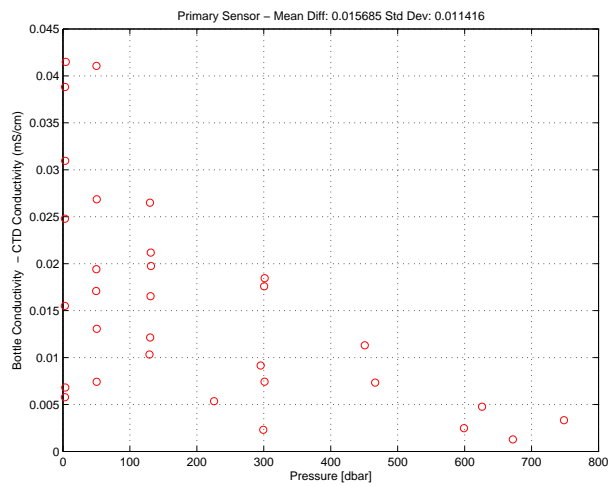
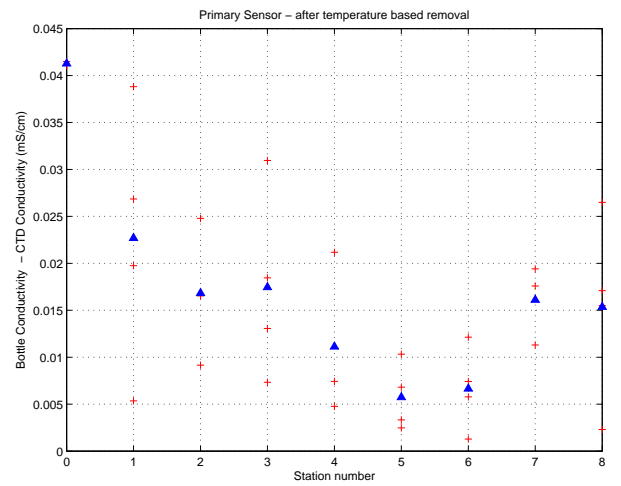
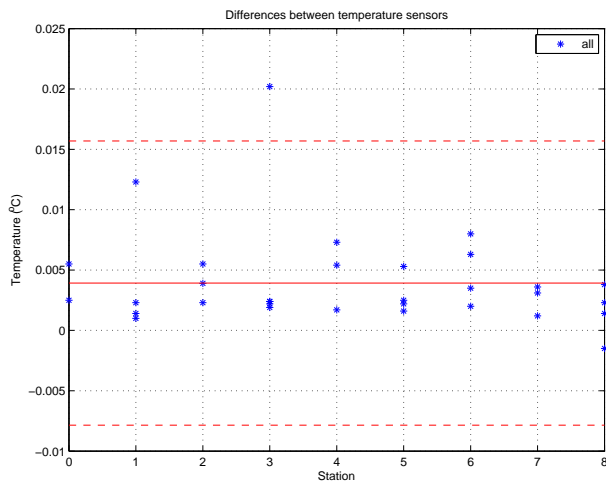
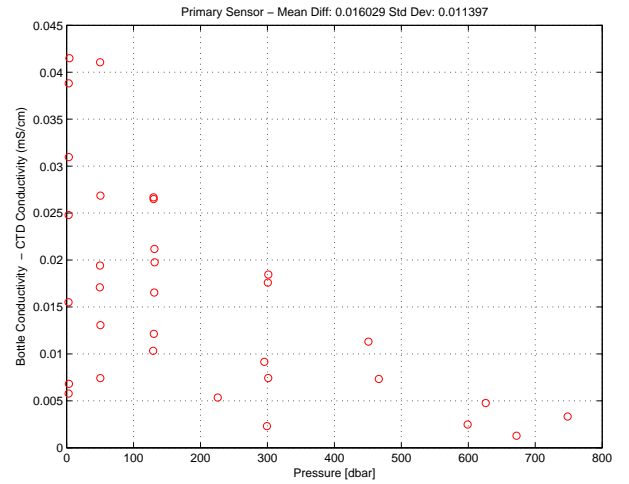
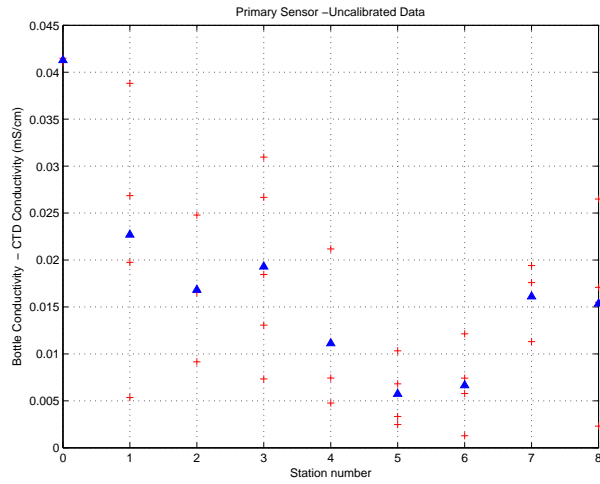


Figure 10: WS0625. Conductivity Calibration

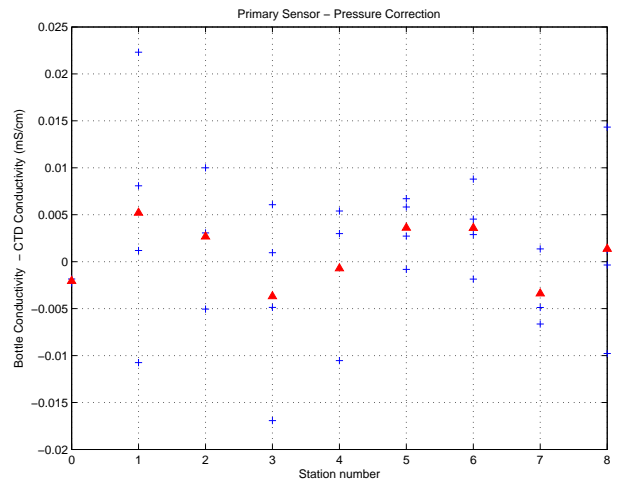
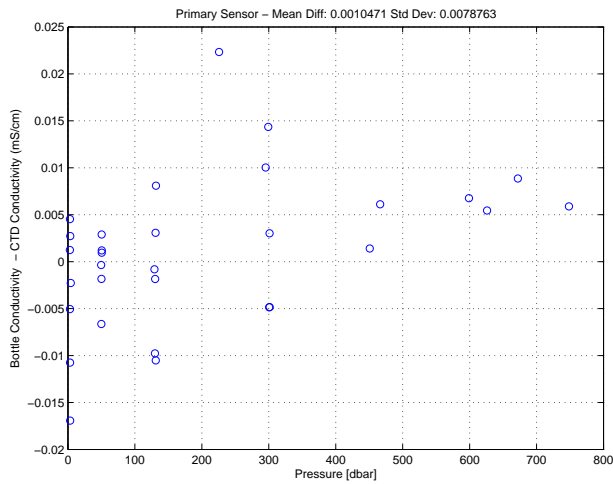
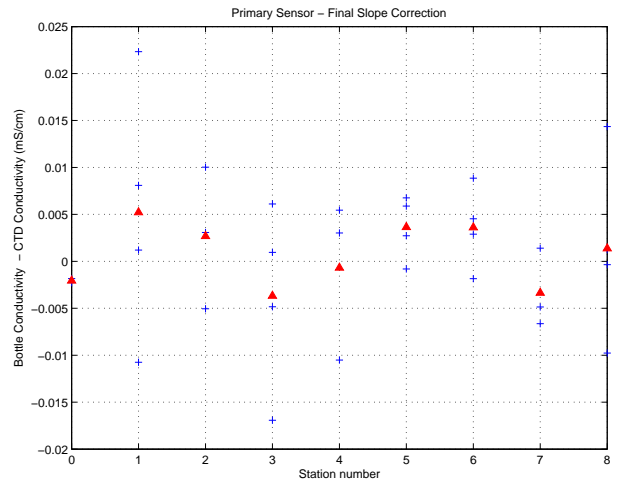
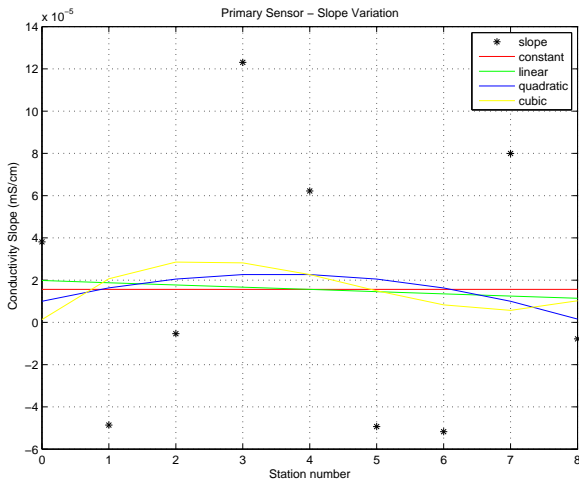
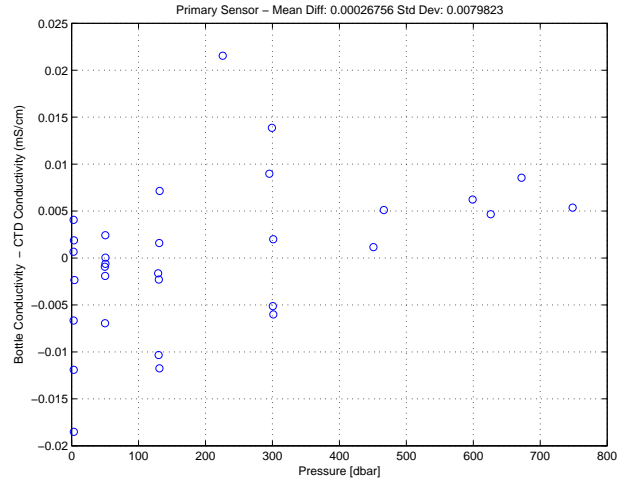
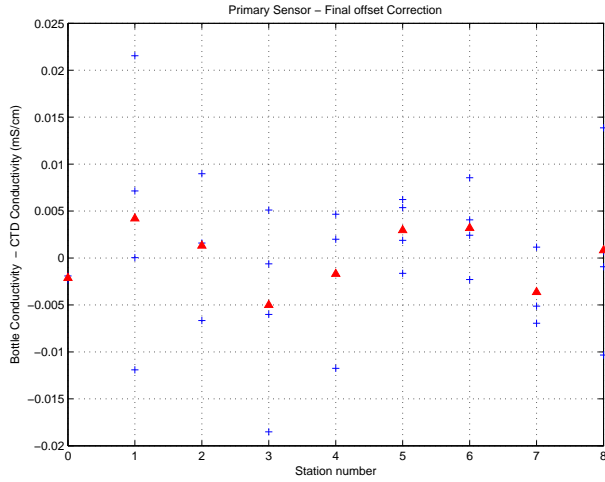


Figure 11: WS0625. Conductivity Calibration (cont.)

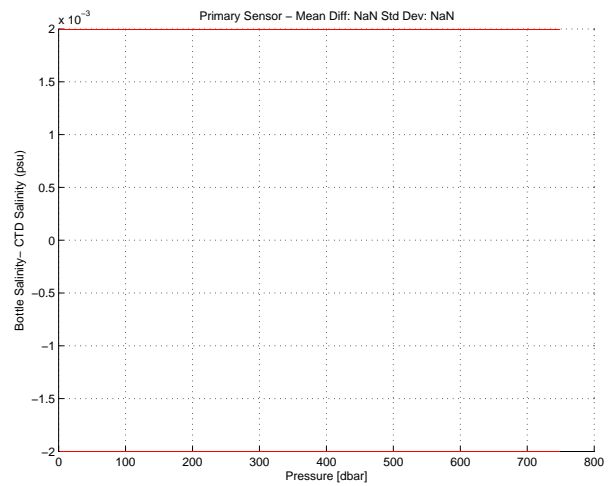
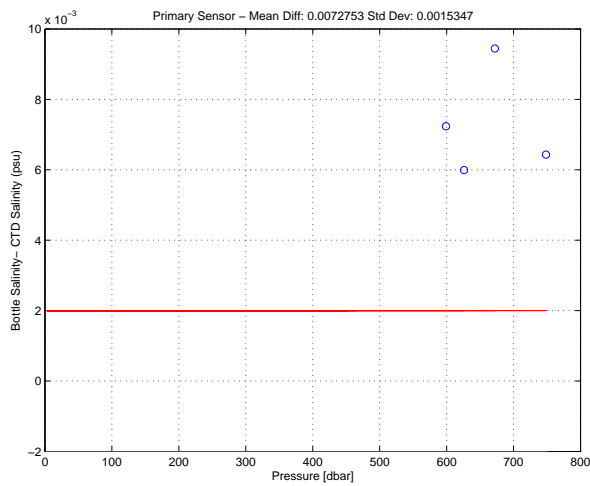
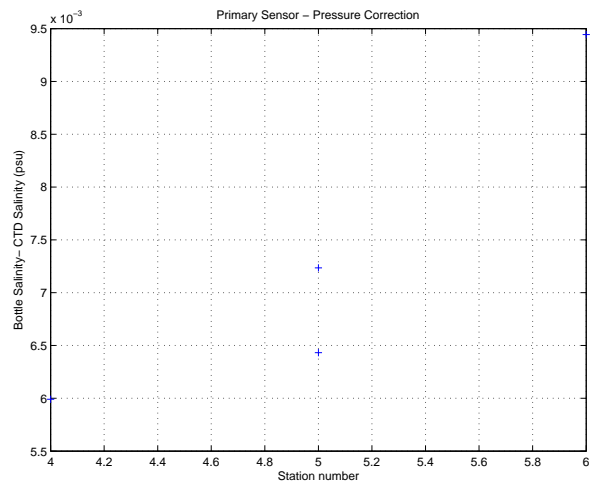
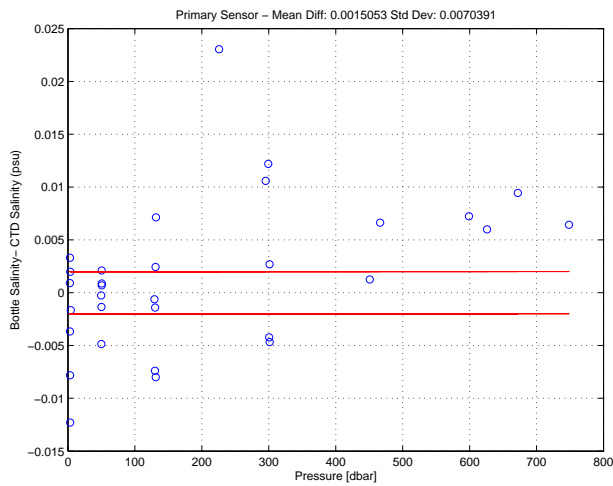
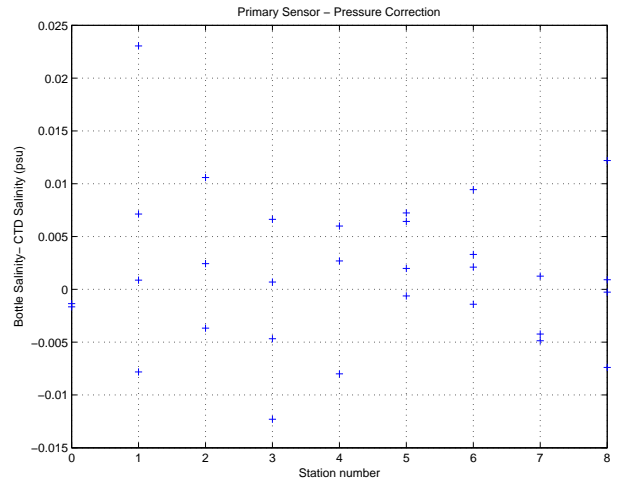
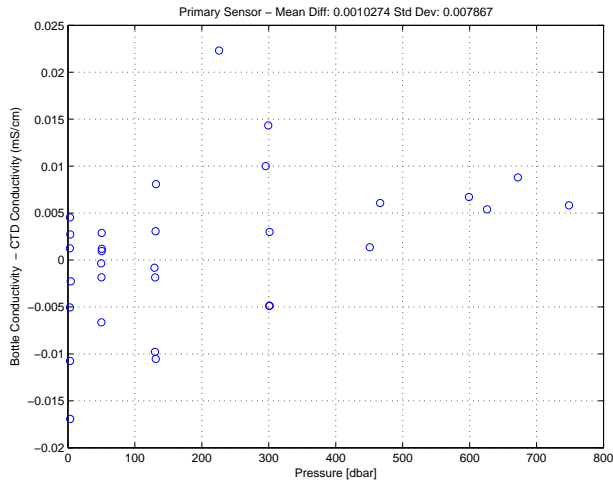


Figure 12: WS0625. Conductivity Calibration (cont.)

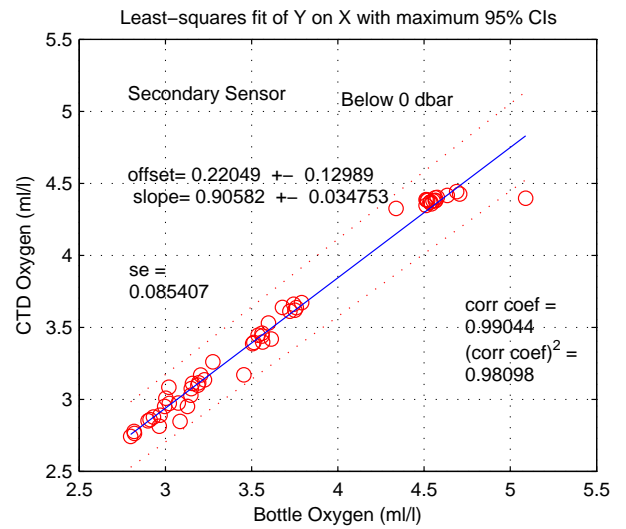
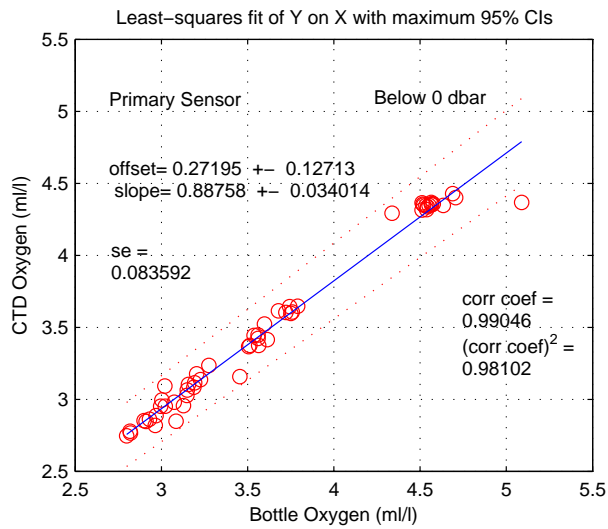
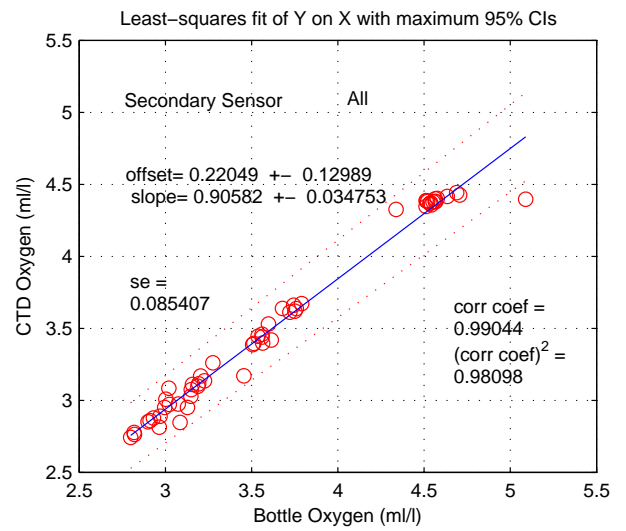
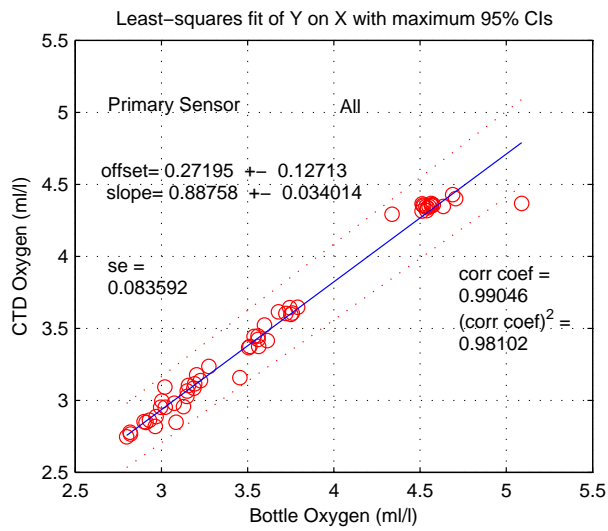
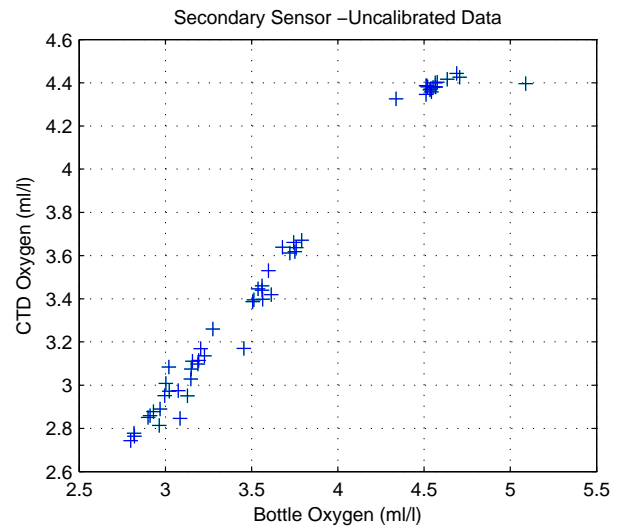
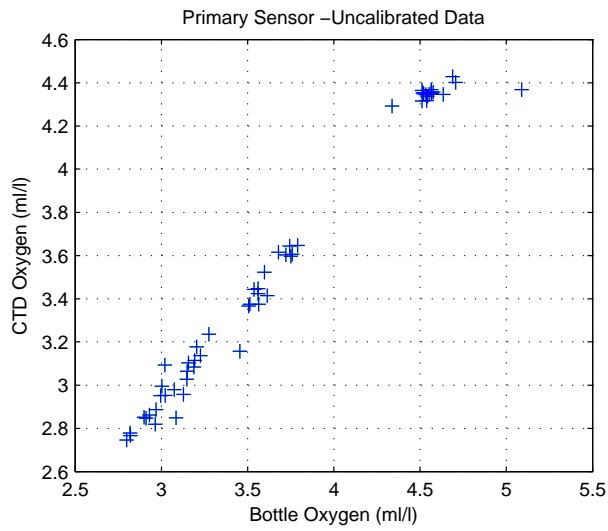


Figure 13: WS0625

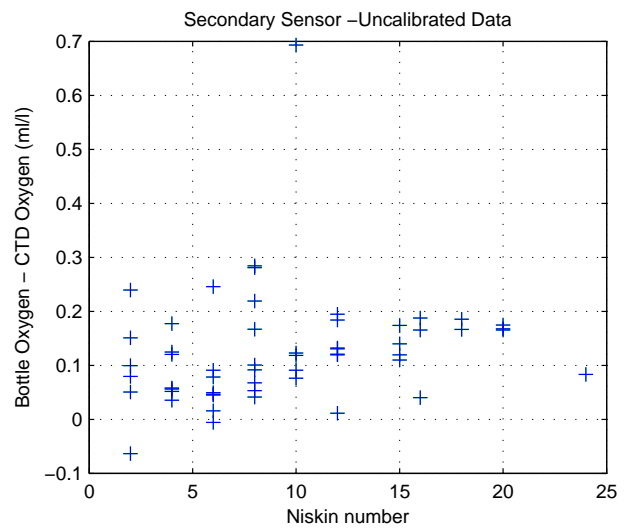
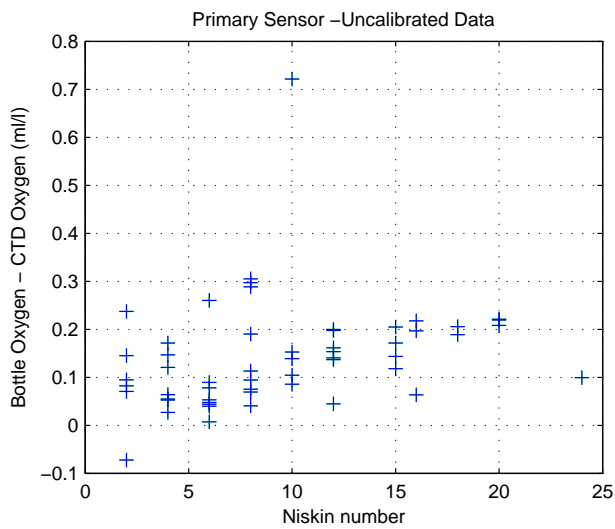
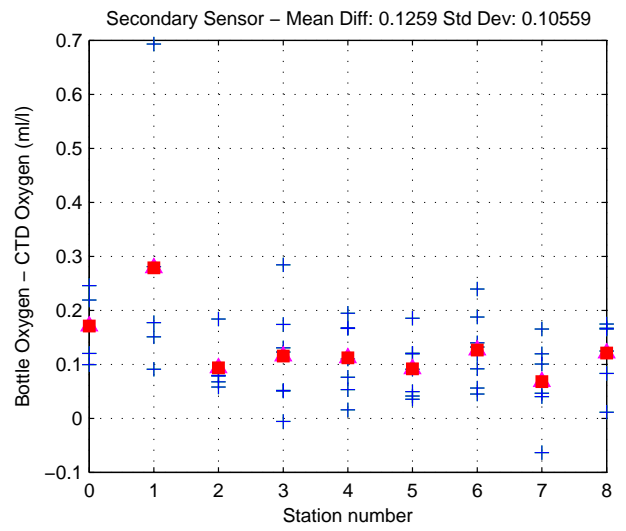
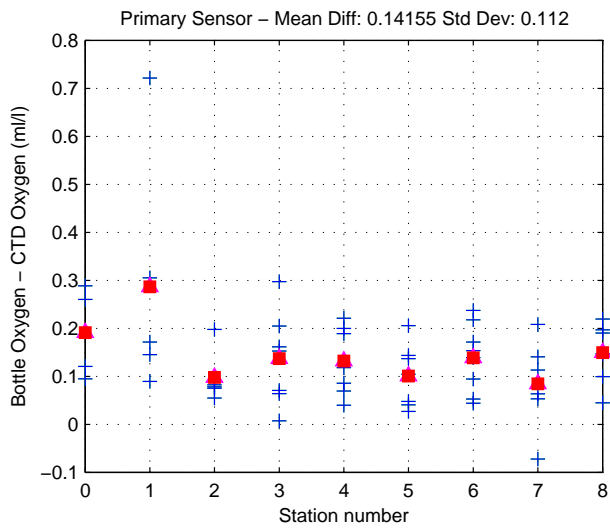
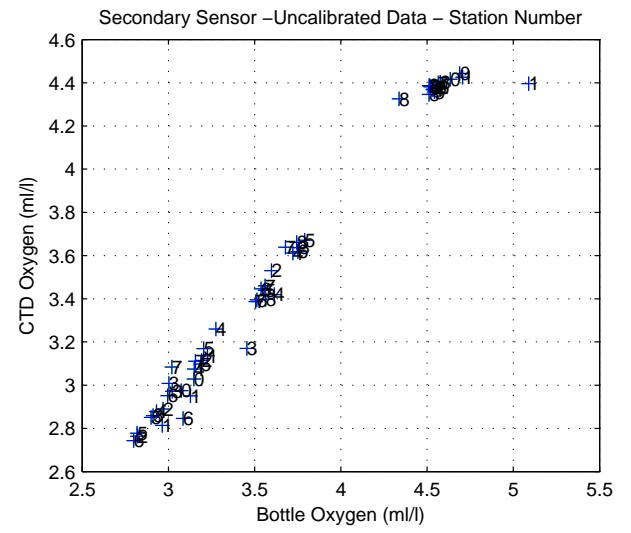
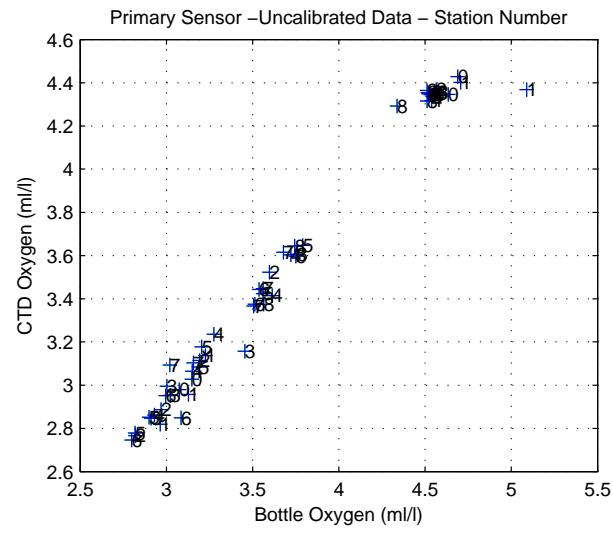


Figure 14: WS0625

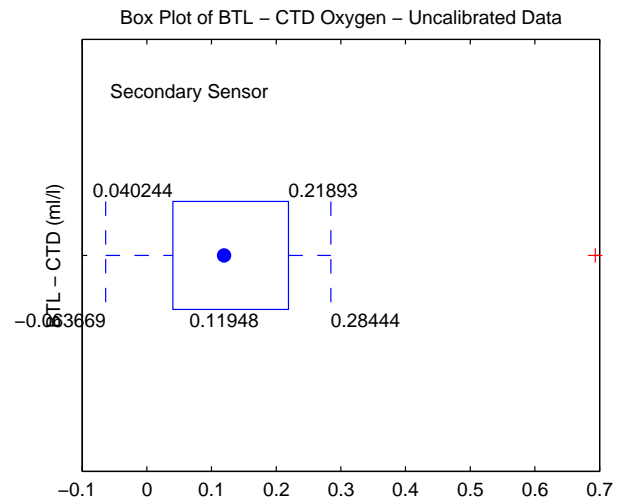
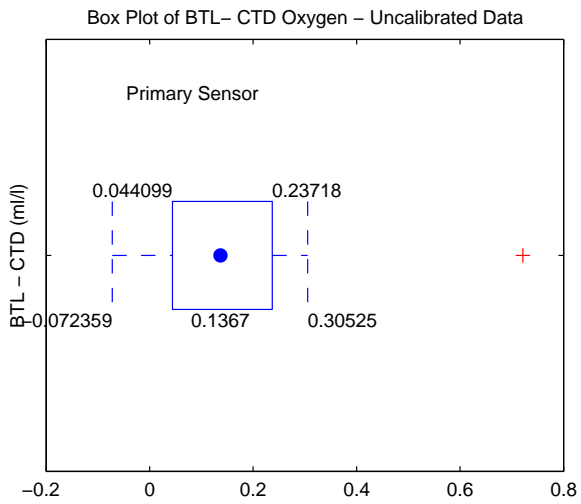
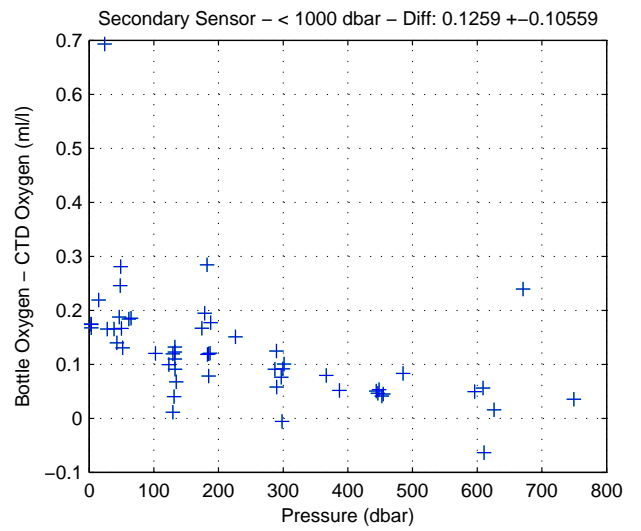
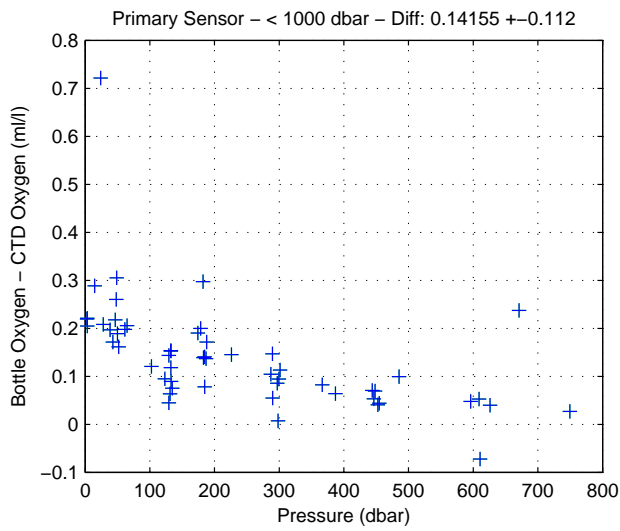
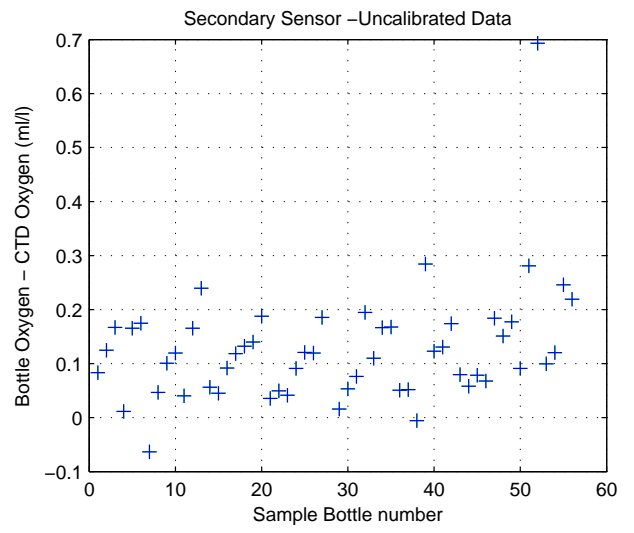
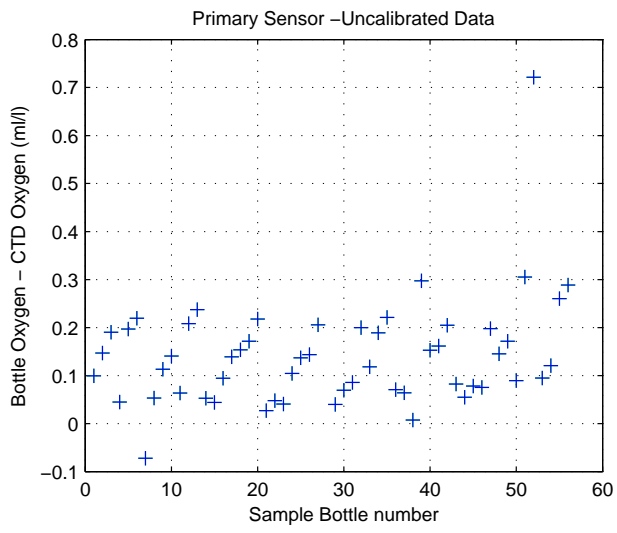


Figure 15: WS0625

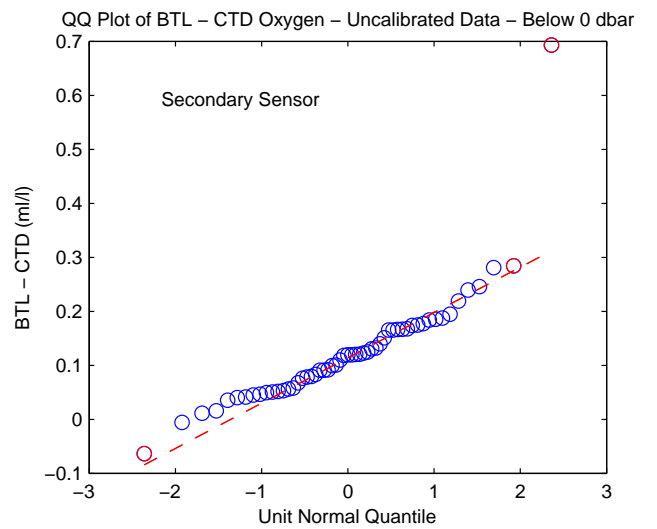
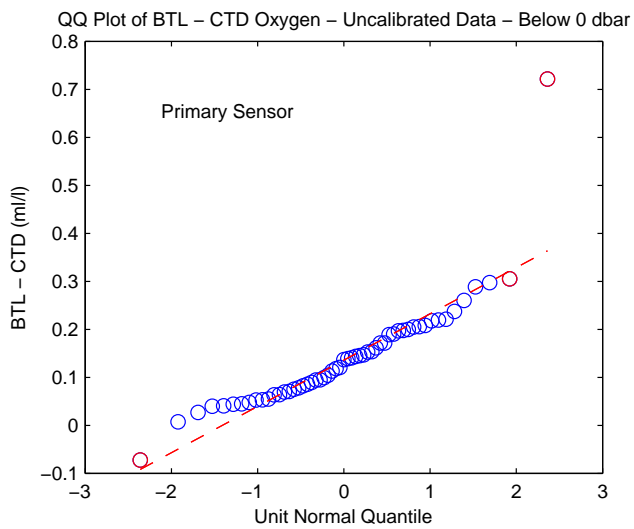
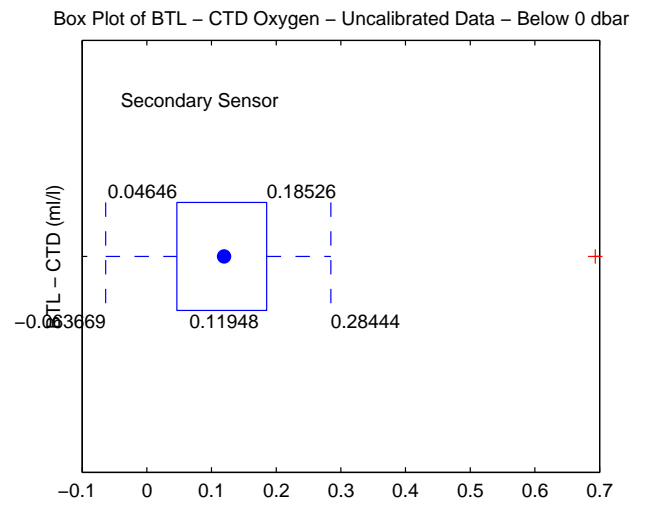
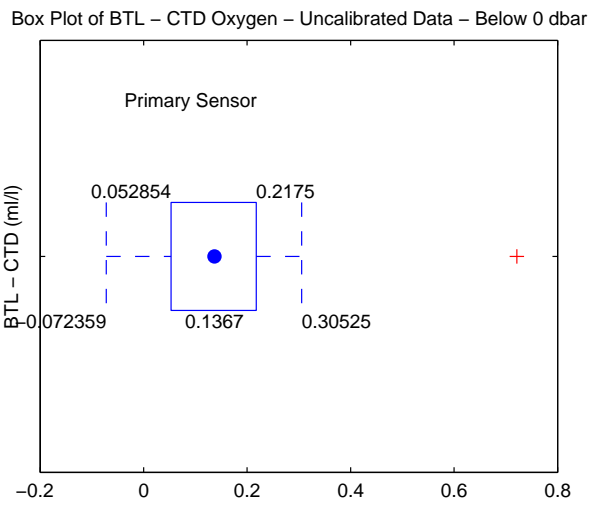
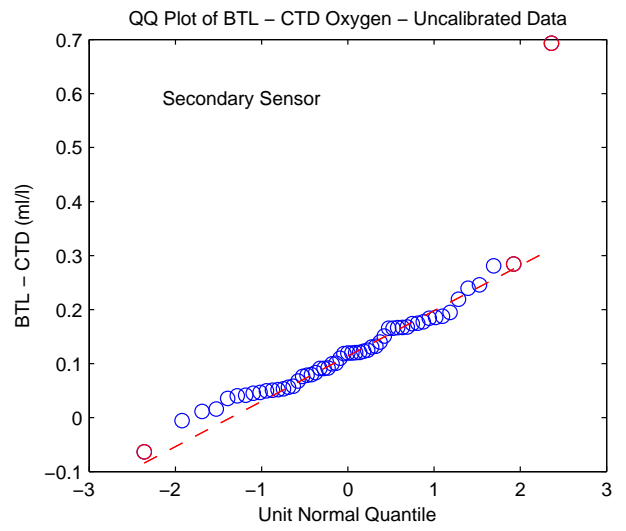
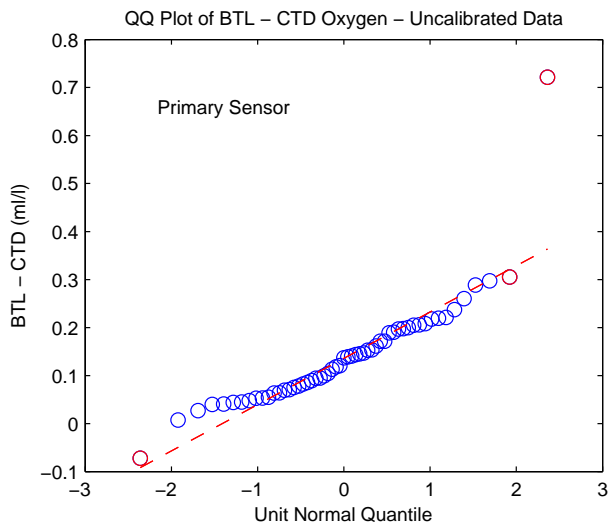


Figure 16: WS0625

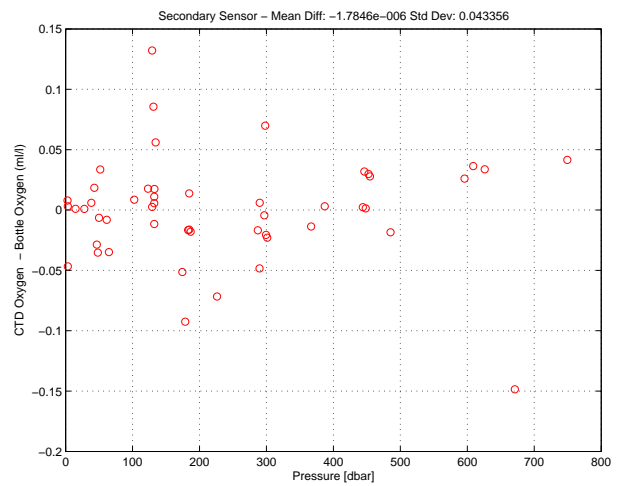
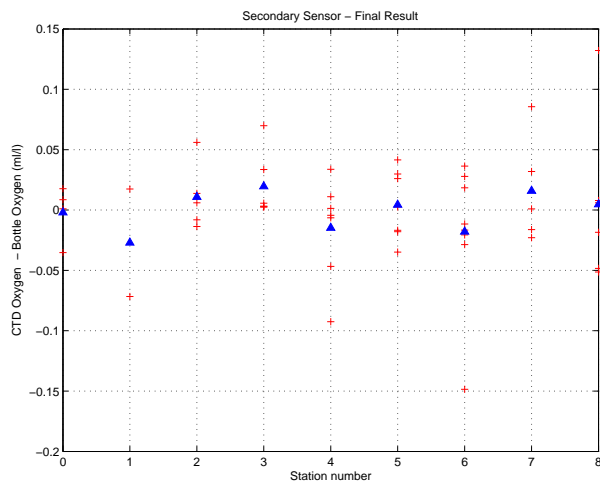
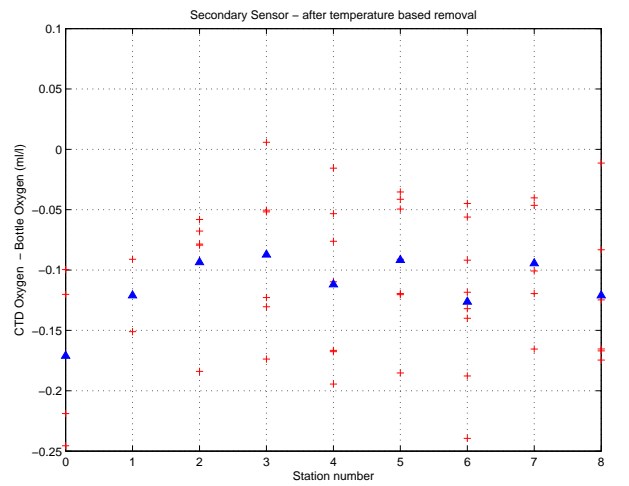
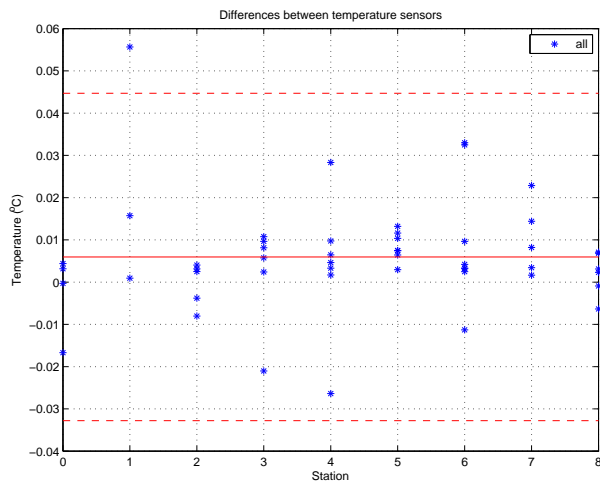
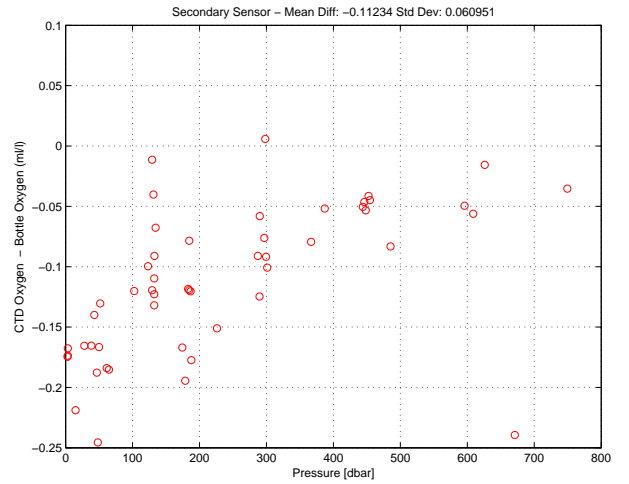
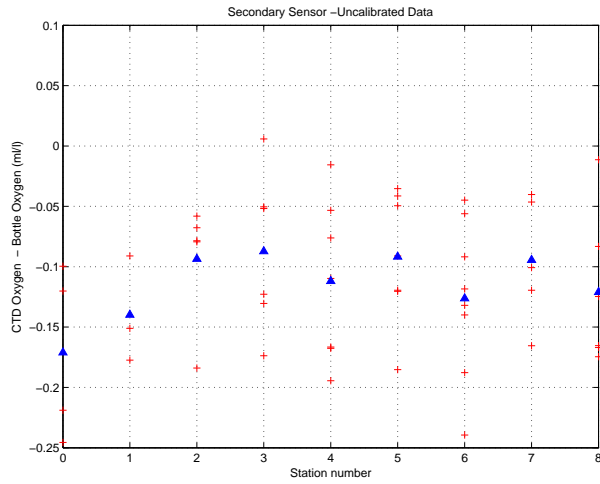


Figure 17: WS0625. Oxygen Calibration

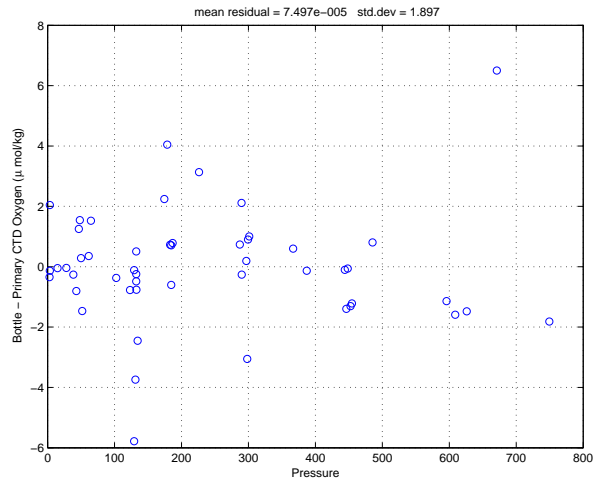
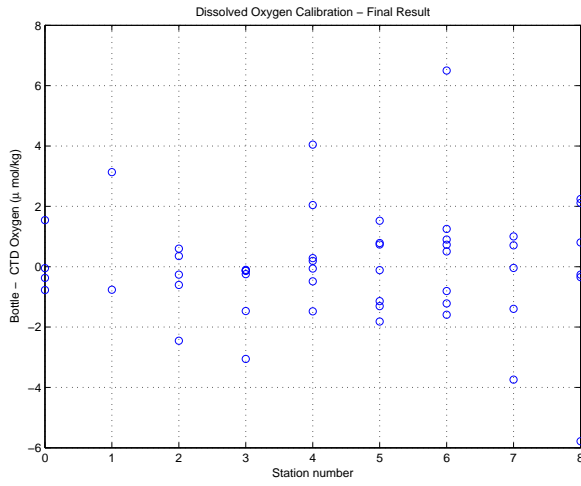


Figure 18: WS0625. Oxygen Calibration (cont.)

Florida Straits R/V FG Walton Smith
 CTD Station 0 (CTD000)
 Latitude 27.006 N Longitude 79.931 W
 14-Dec-2006 07:56 Z

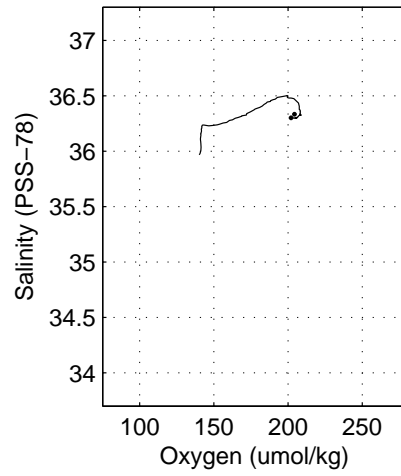
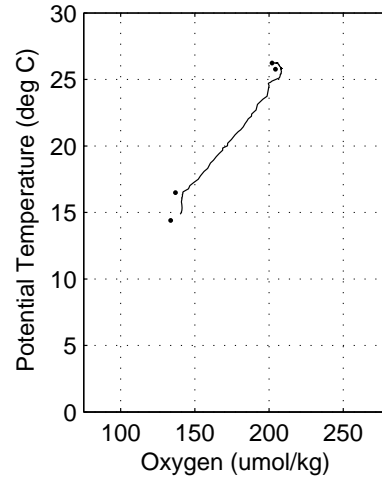
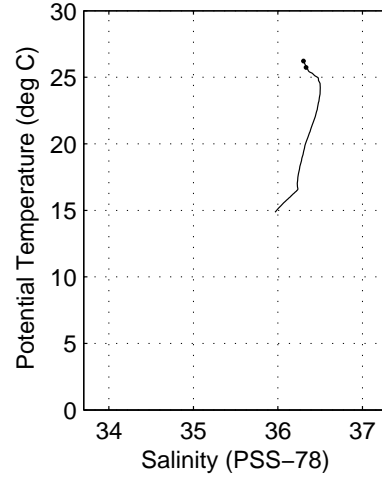
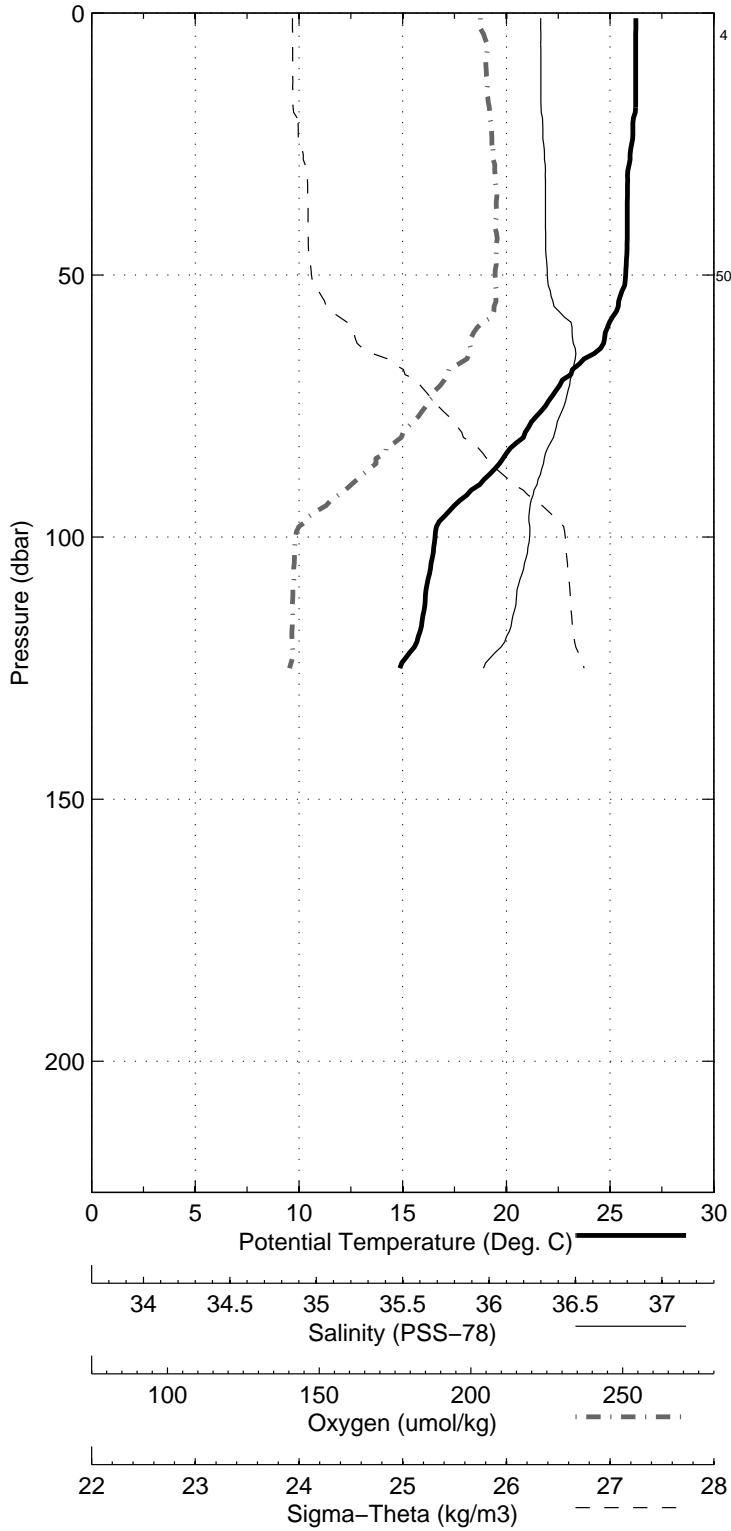


Figure 19: WS0625

Florida Straits R/V FG Walton Smith
CTD Station 1 (CTD001)
Latitude 27.008 N Longitude 79.868 W
14-Dec-2006 06:47 Z

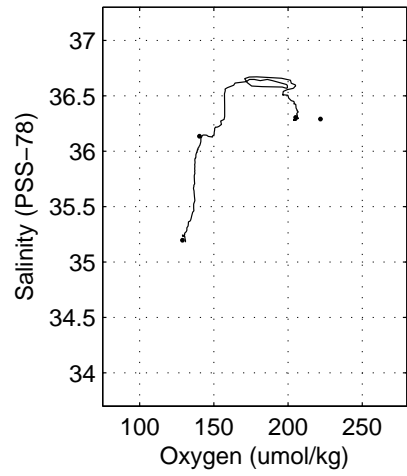
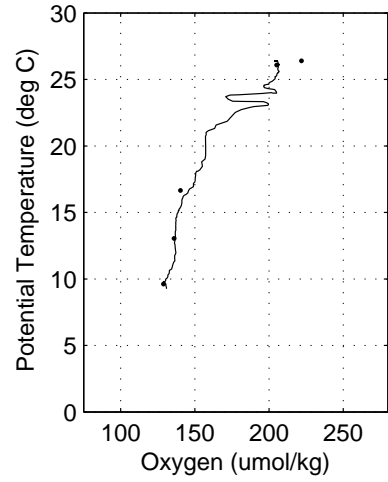
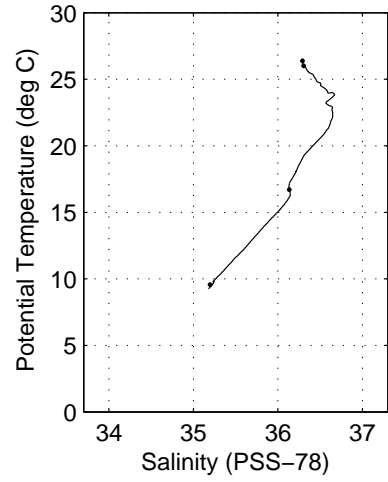
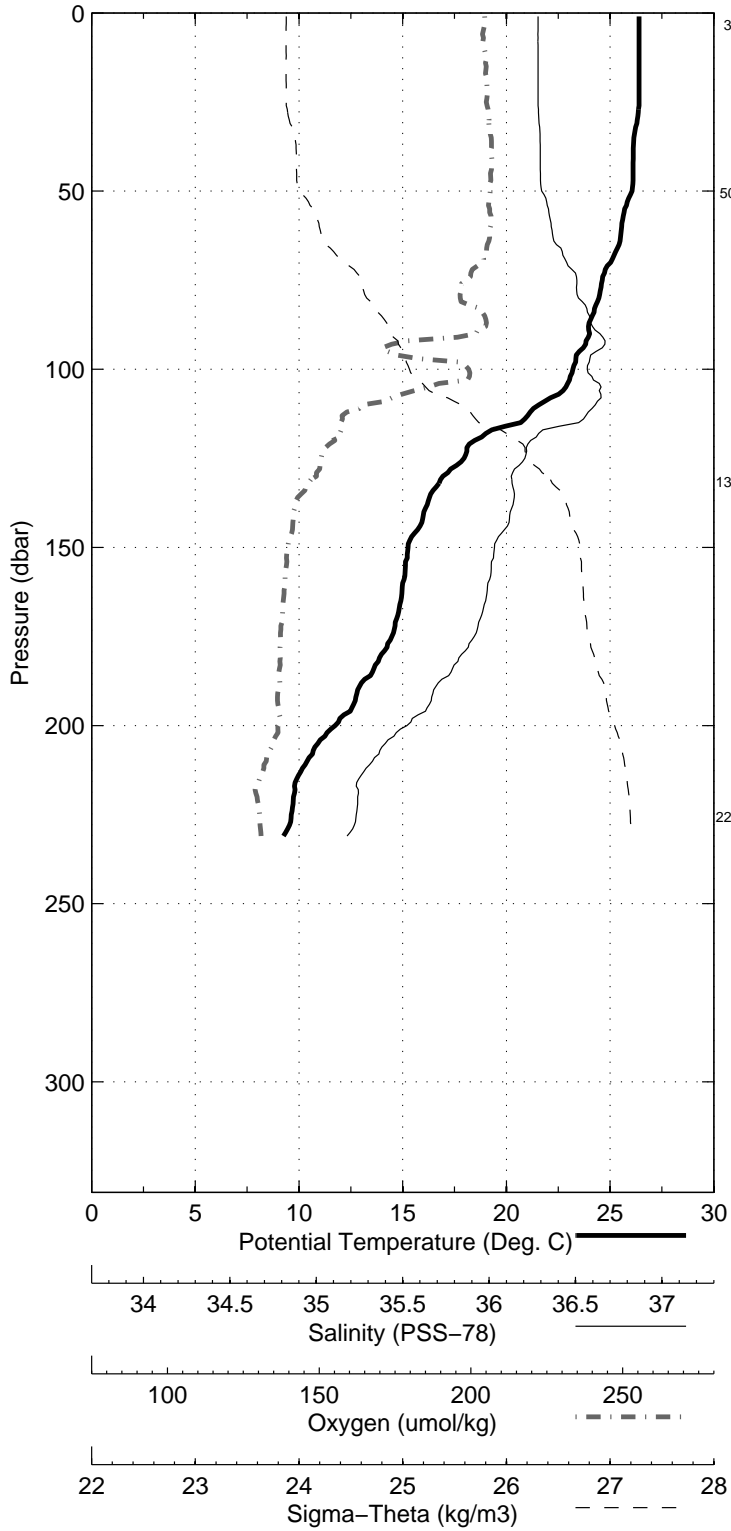


Figure 20: WS0625

Florida Straits R/V FG Walton Smith
 CTD Station 2 (CTD002)
 Latitude 27.007 N Longitude 79.785 W
 14-Dec-2006 05:33 Z

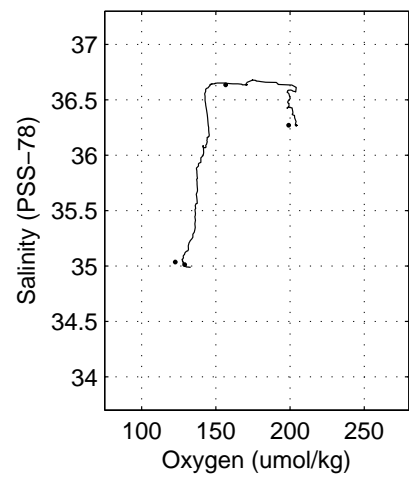
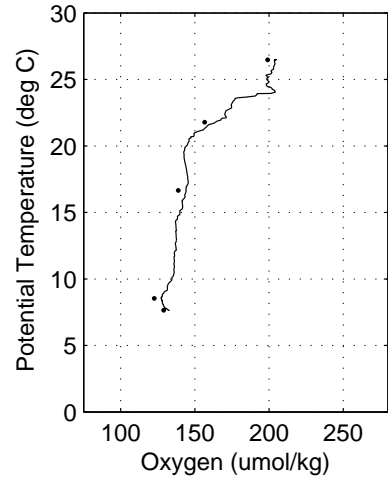
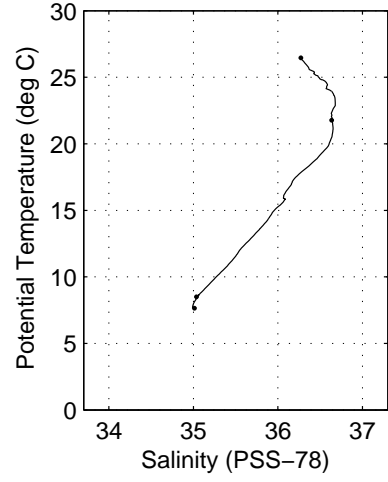
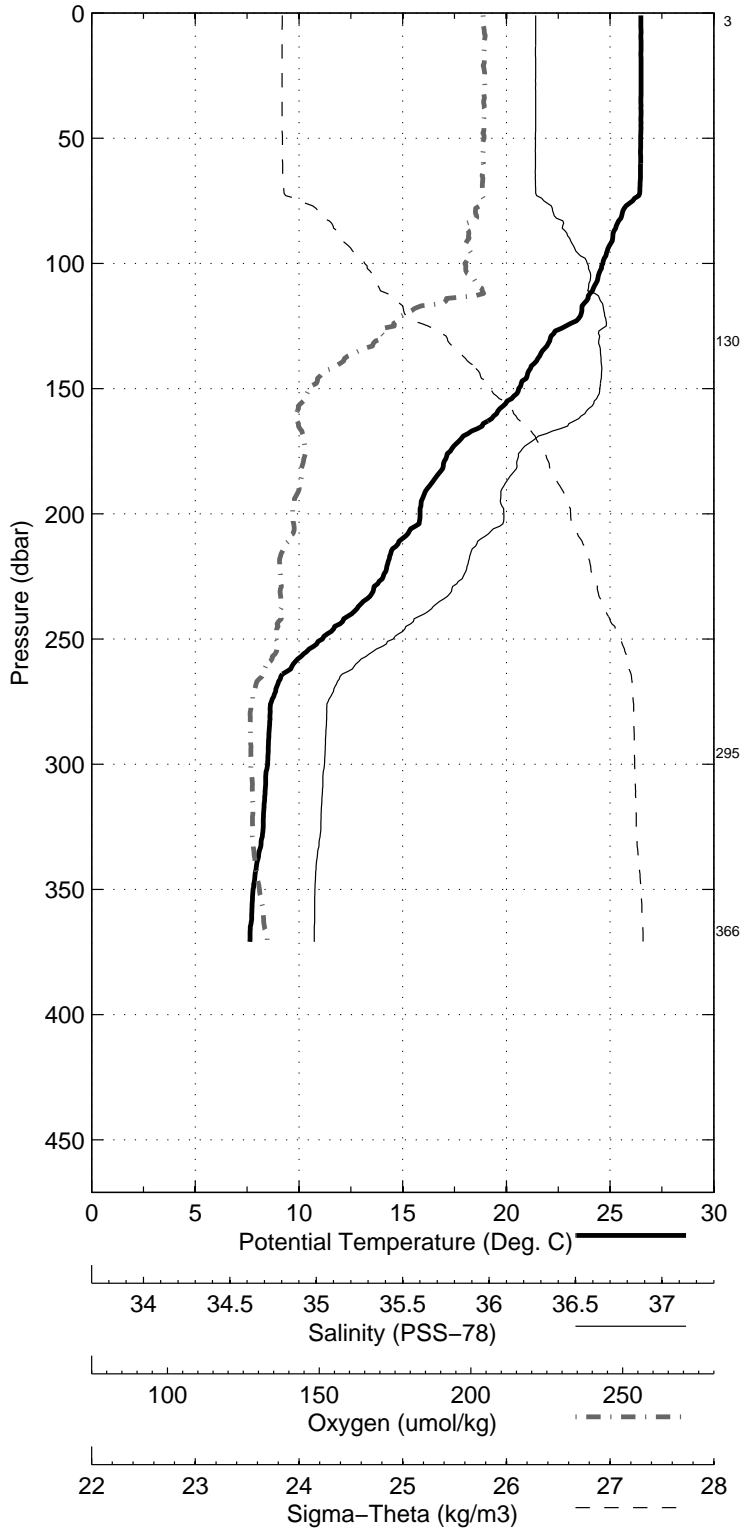


Figure 21: WS0625

Florida Straits R/V FG Walton Smith
 CTD Station 3 (CTD003)
 Latitude 27.003 N Longitude 79.682 W
 14-Dec-2006 03:53 Z

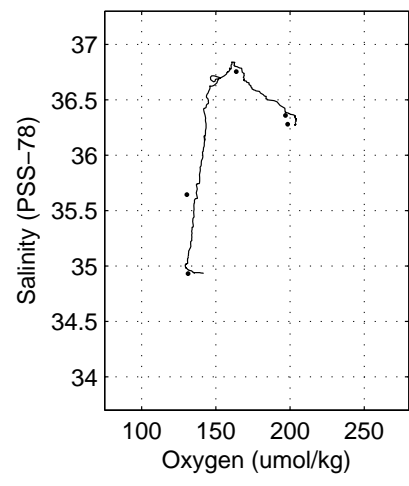
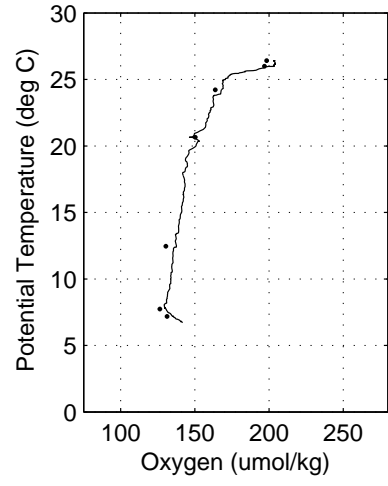
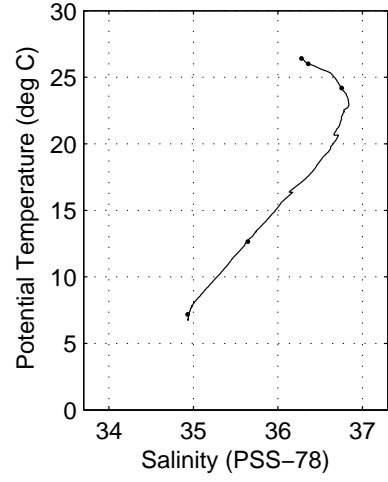
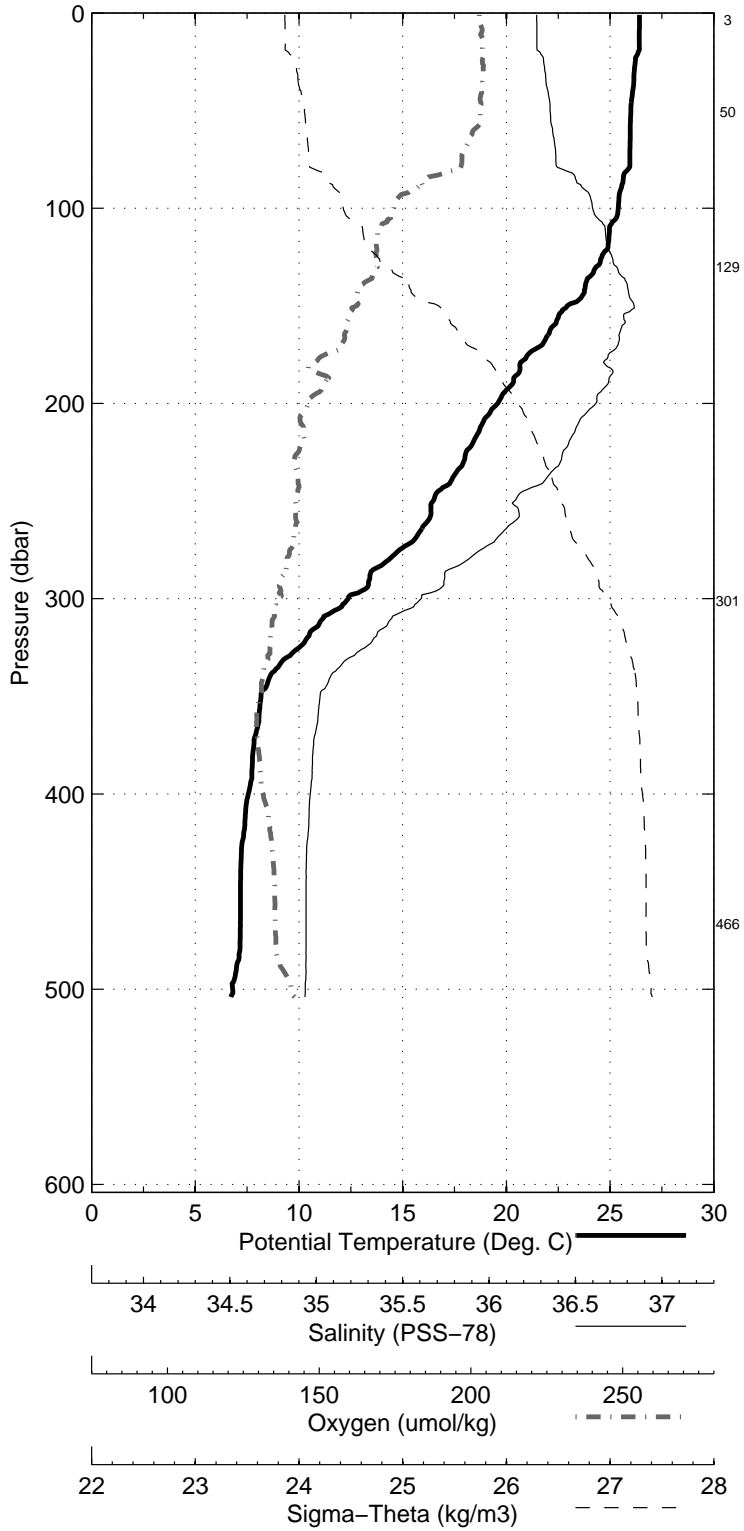


Figure 22: WS0625

Florida Straits R/V FG Walton Smith
CTD Station 4 (CTD004)
Latitude 27.002 N Longitude 79.617 W
14-Dec-2006 02:37 Z

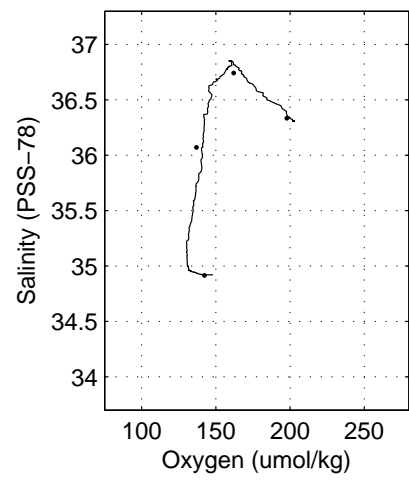
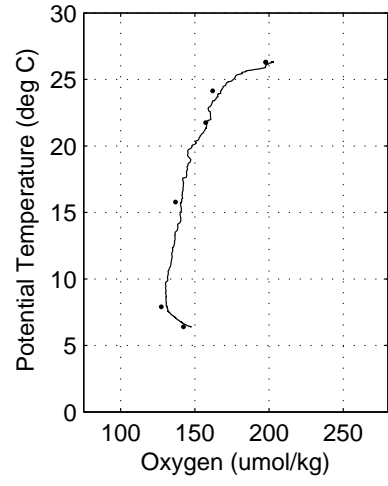
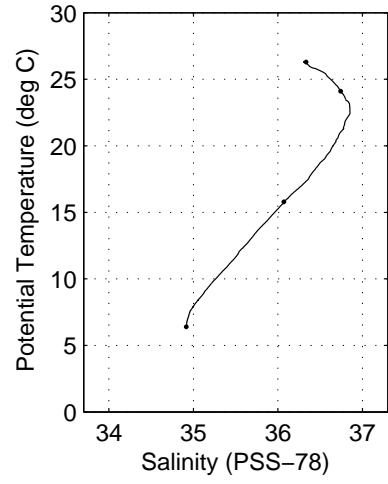
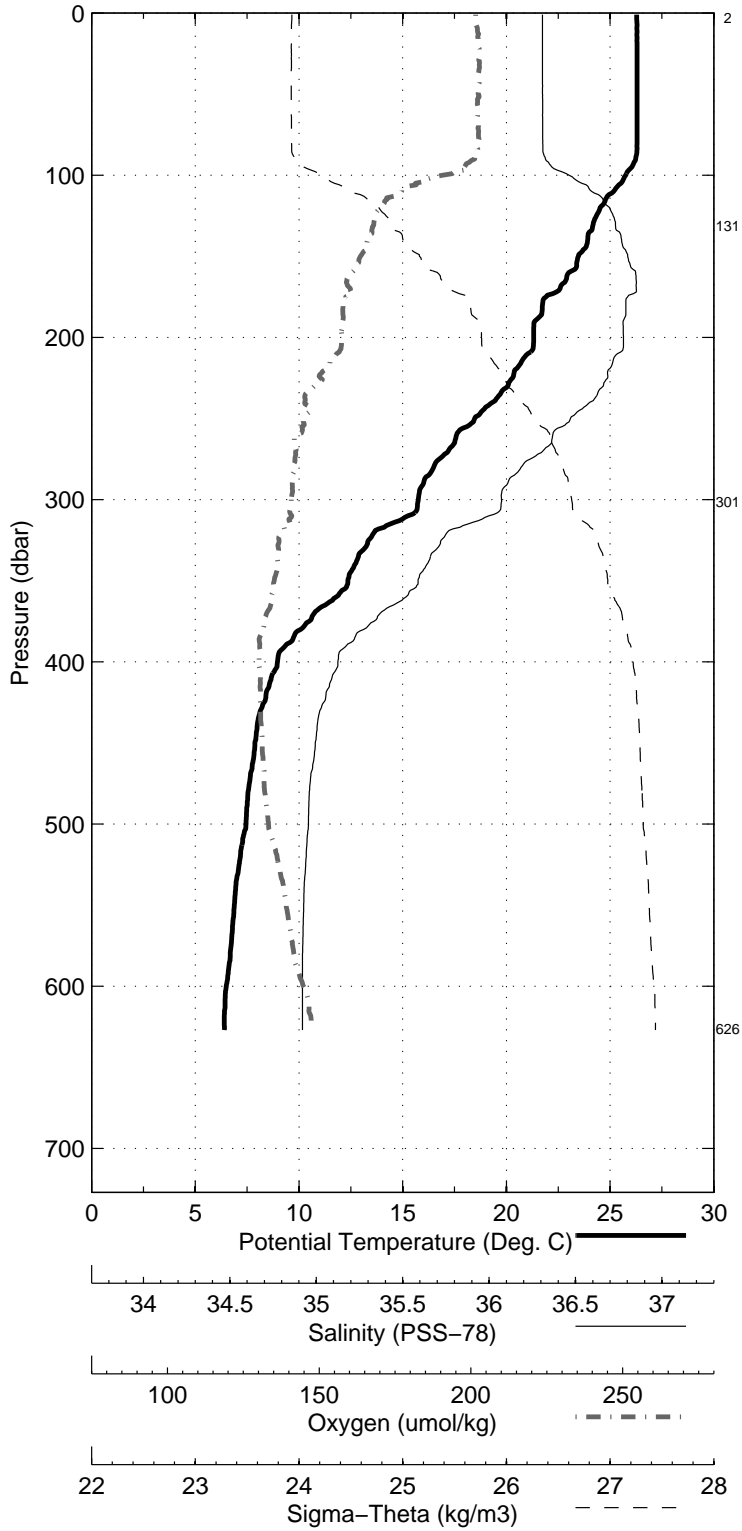


Figure 23: WS0625

Florida Straits R/V FG Walton Smith
 CTD Station 5 (CTD005)
 Latitude 27.002 N Longitude 79.501 W
 14-Dec-2006 01:07 Z

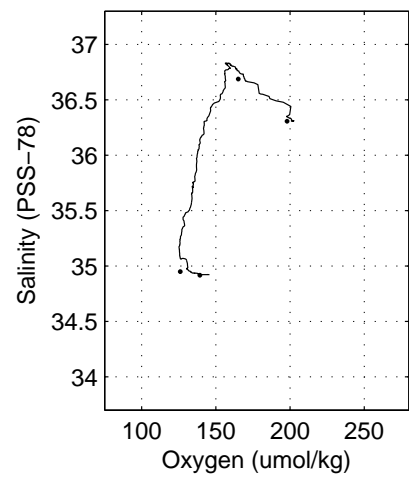
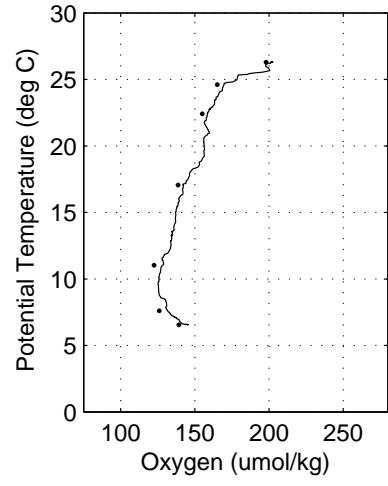
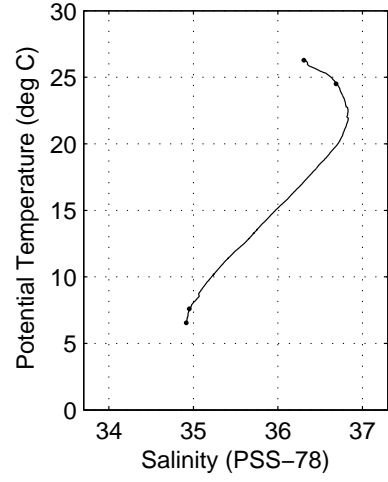
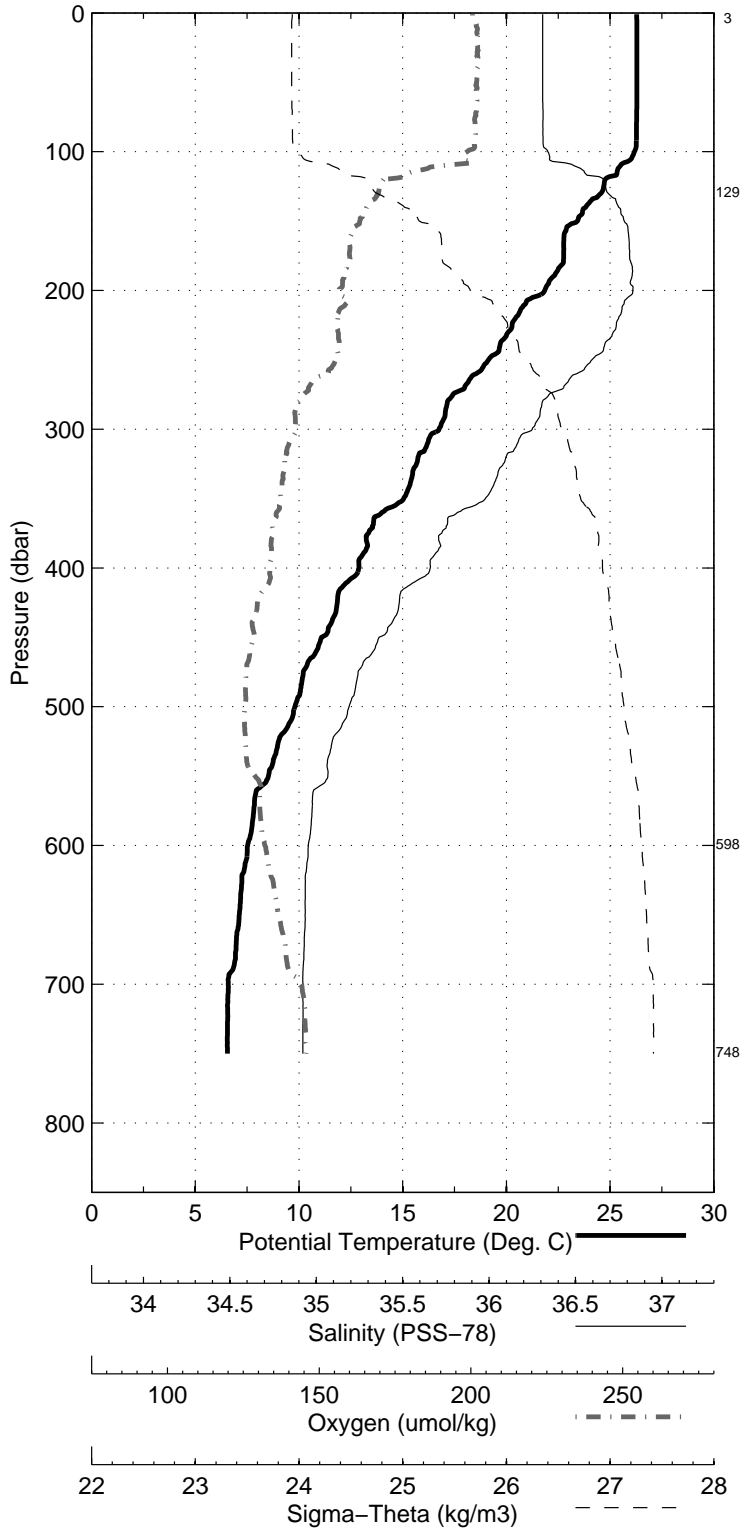


Figure 24: WS0625

Florida Straits R/V FG Walton Smith
 CTD Station 6 (CTD006)
 Latitude 27.002 N Longitude 79.384 W
 13-Dec-2006 21:25 Z

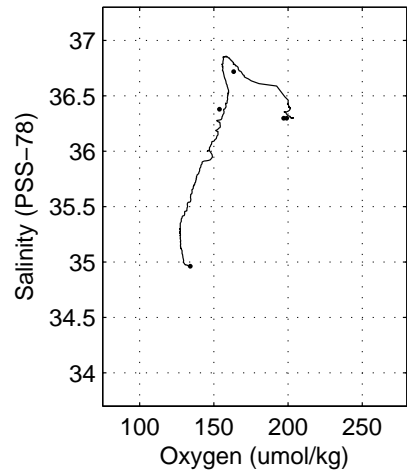
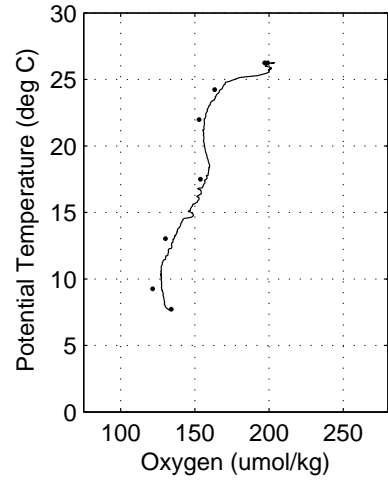
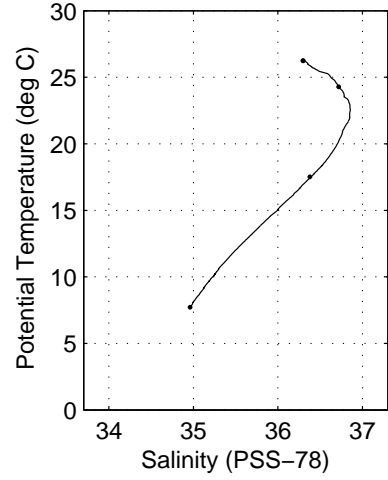
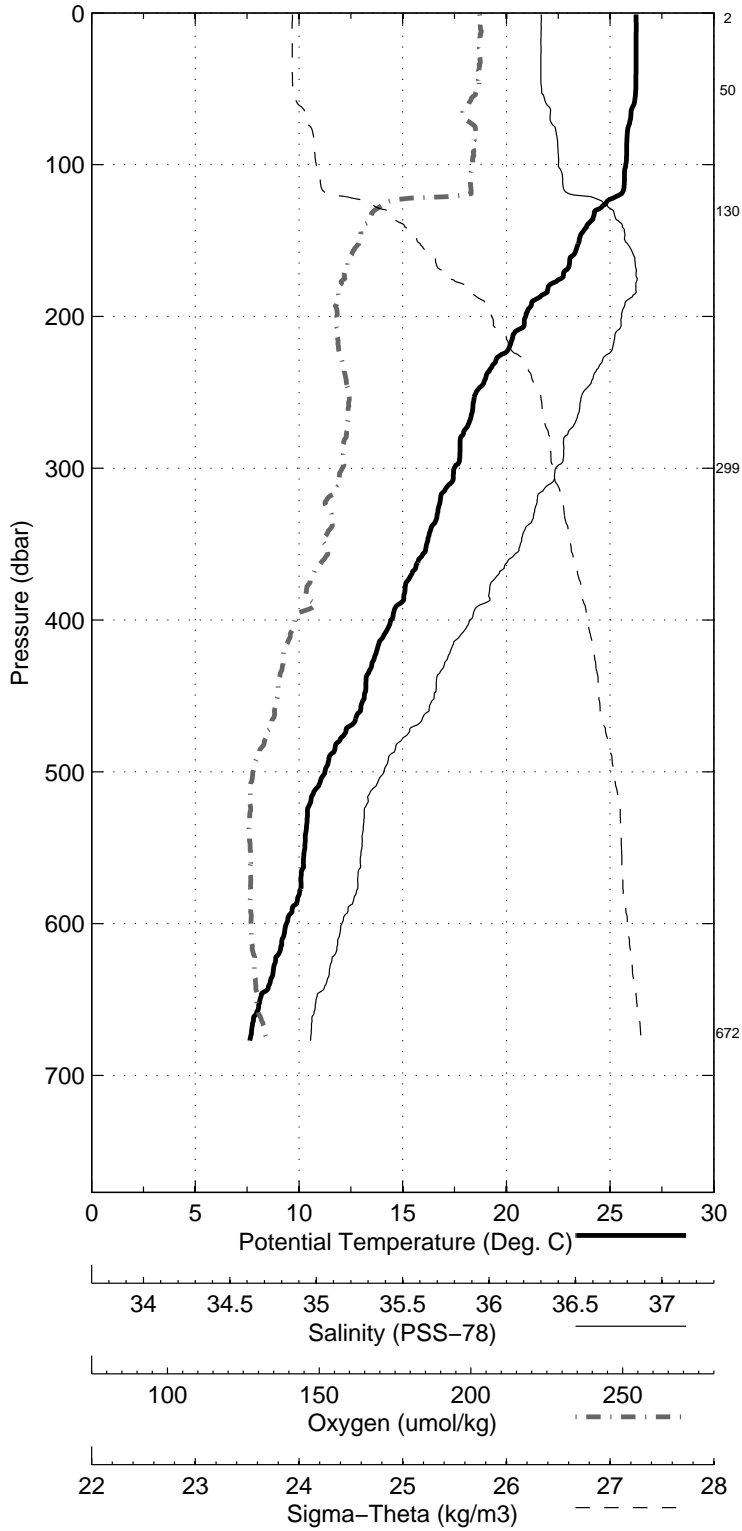


Figure 25: WS0625

Florida Straits R/V FG Walton Smith
 CTD Station 7 (CTD007)
 Latitude 27.001 N Longitude 79.289 W
 13-Dec-2006 19:40 Z

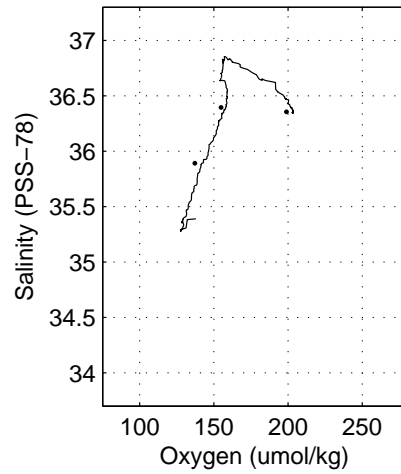
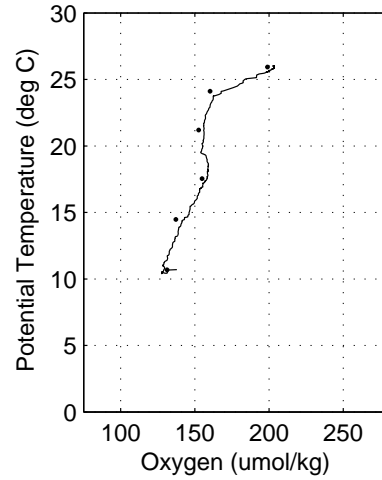
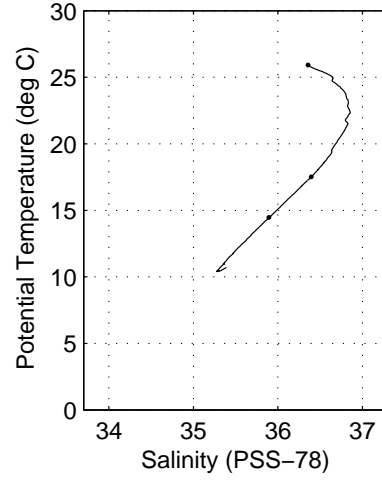
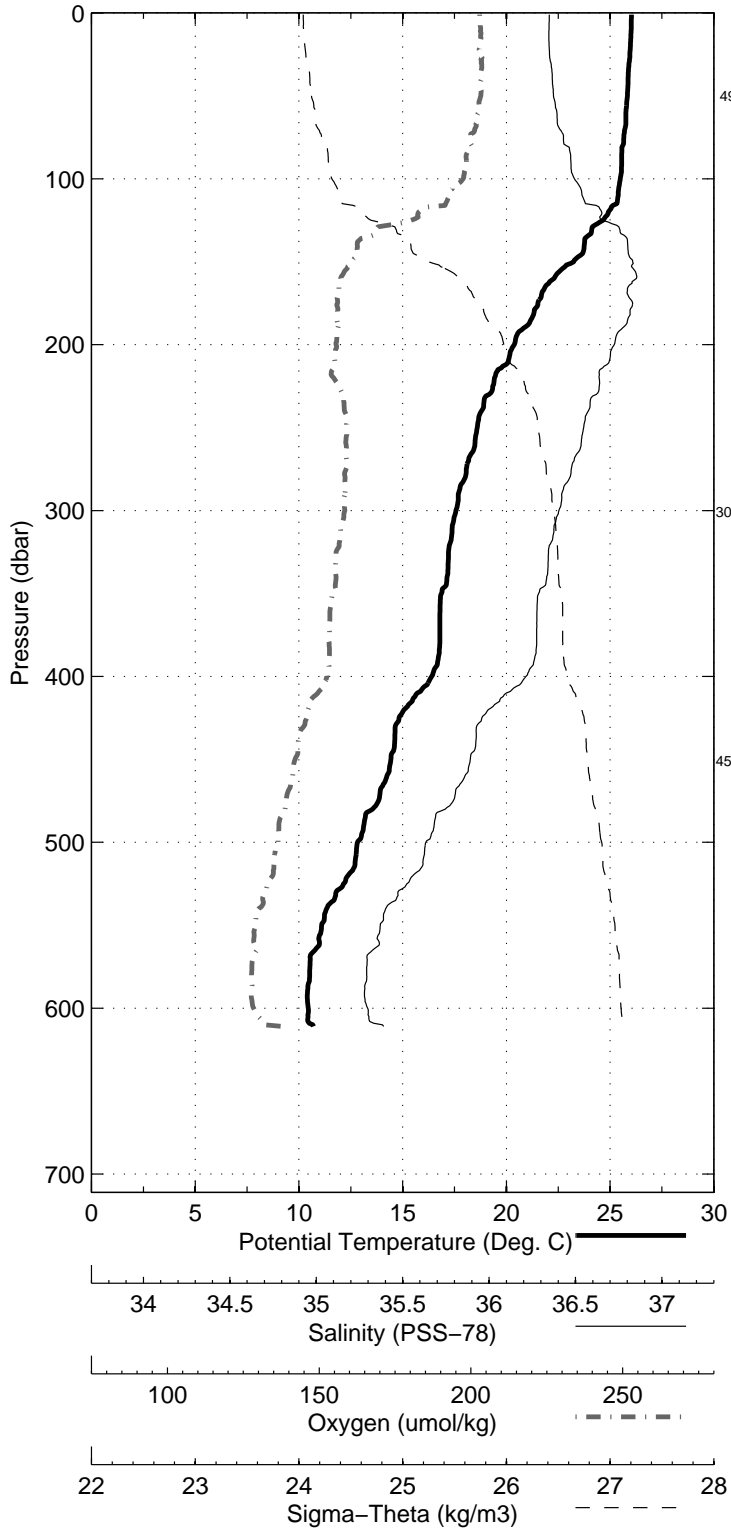


Figure 26: WS0625

Florida Straits R/V FG Walton Smith
 CTD Station 8 (CTD008)
 Latitude 26.998 N Longitude 79.203 W
 13-Dec-2006 18:01 Z

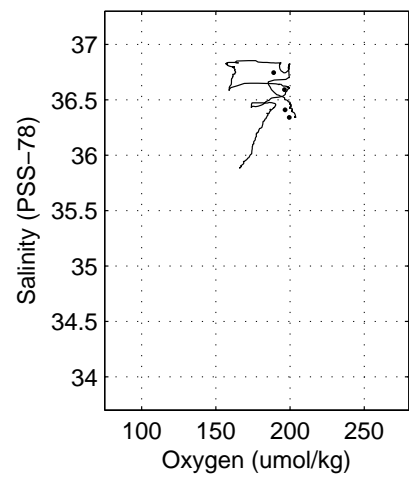
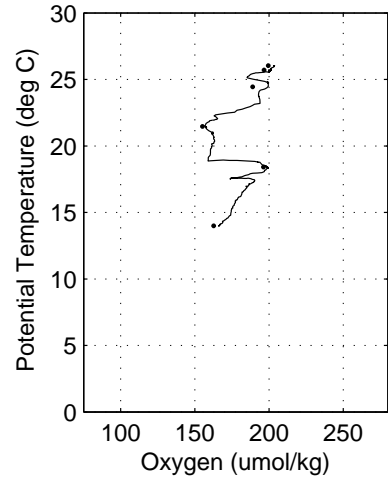
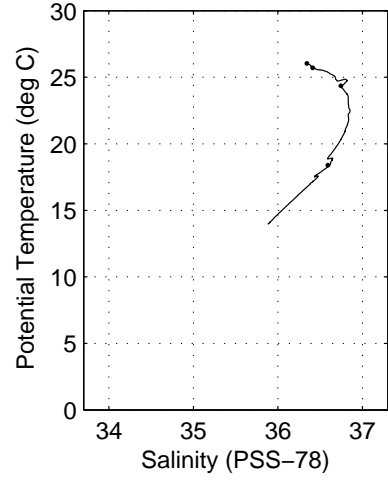
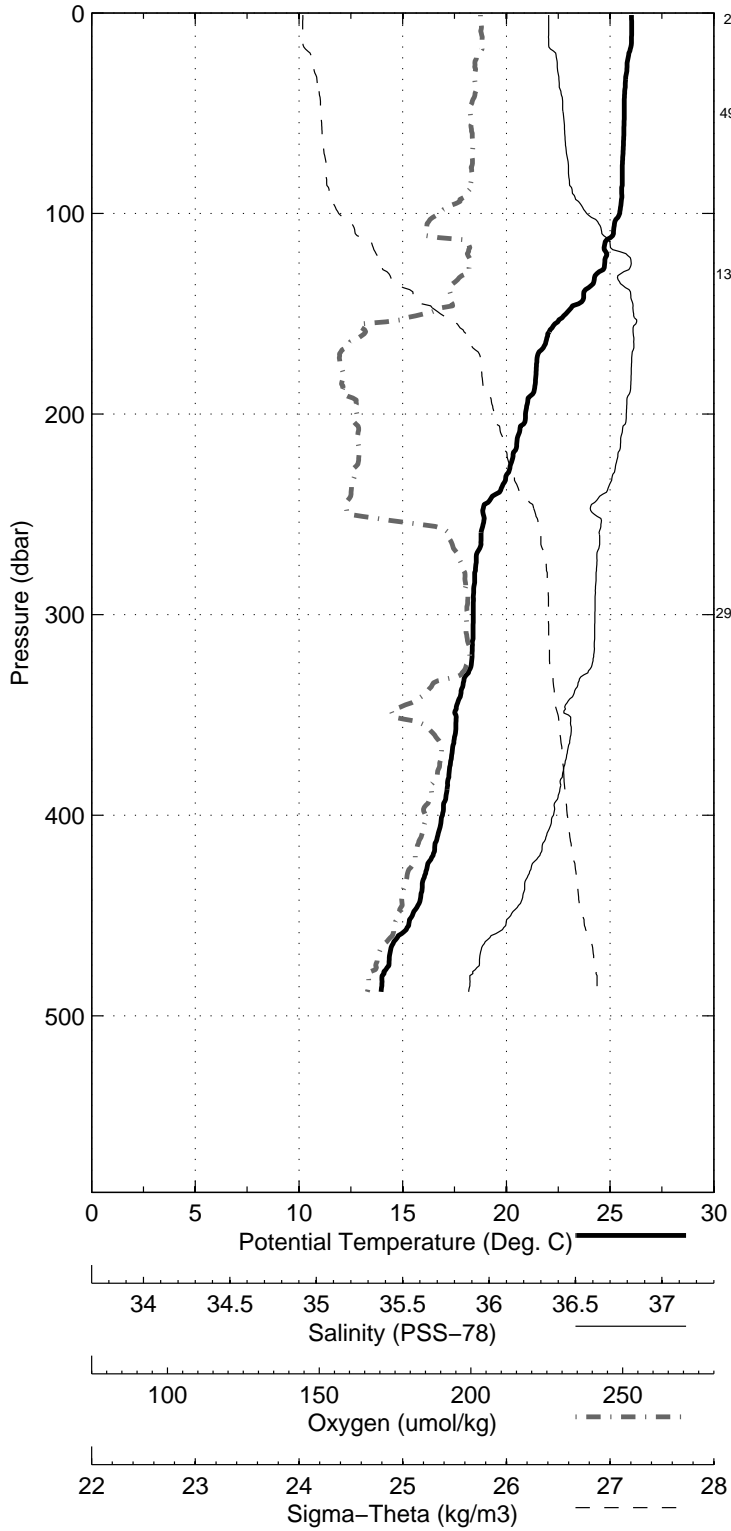


Figure 27: WS0625