

**Straits of Florida: CTD data calibration report**  
**NOAA/AOML: Western Boundary Time Series program**

**Cruise ID: WS0621**

**Cruise date: December, 2005**

**Rigoberto F. Garcia**

**Carlos A. Fonseca**

**Christopher S. Meinen**

**Molly O. Baringer**

September 10, 2007

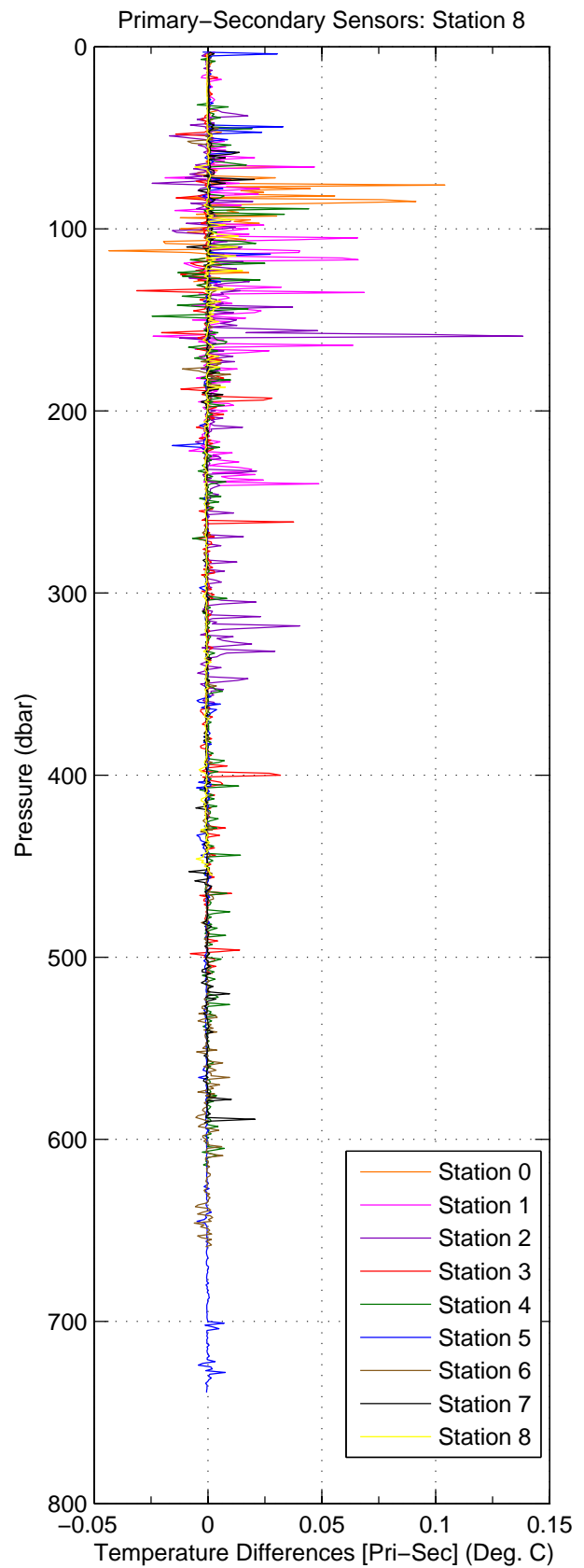
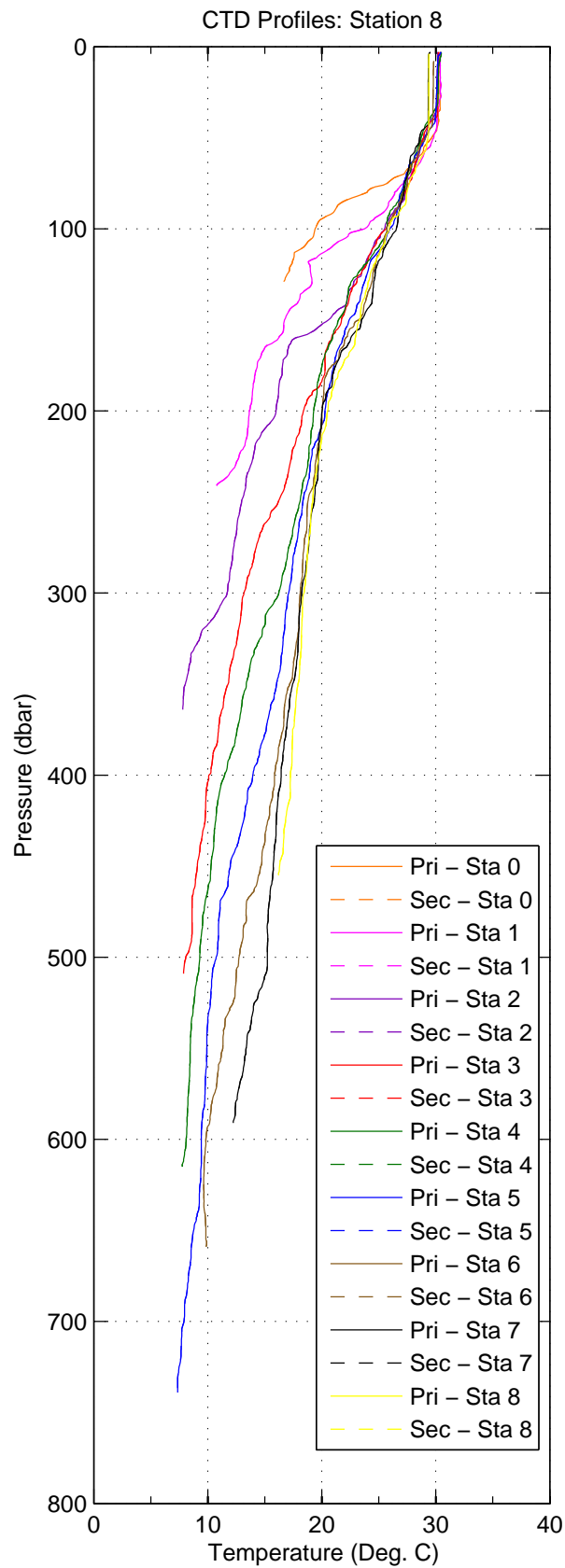


Figure 1: WS0621

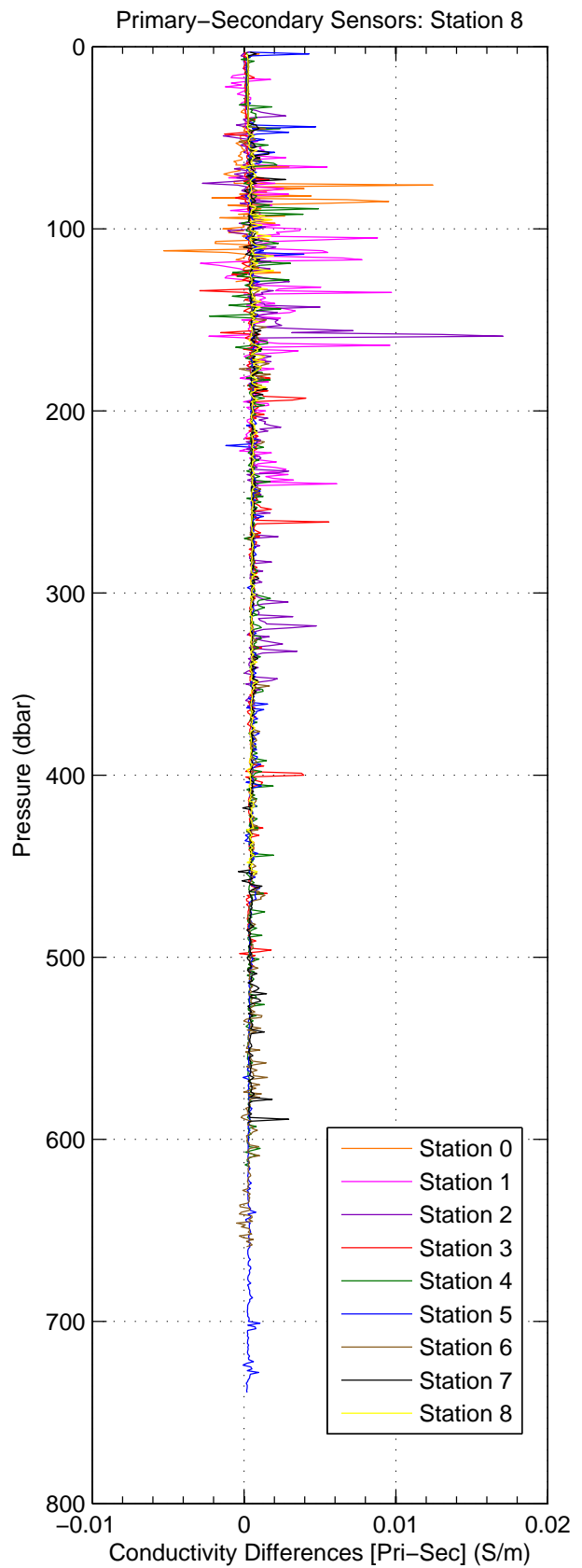
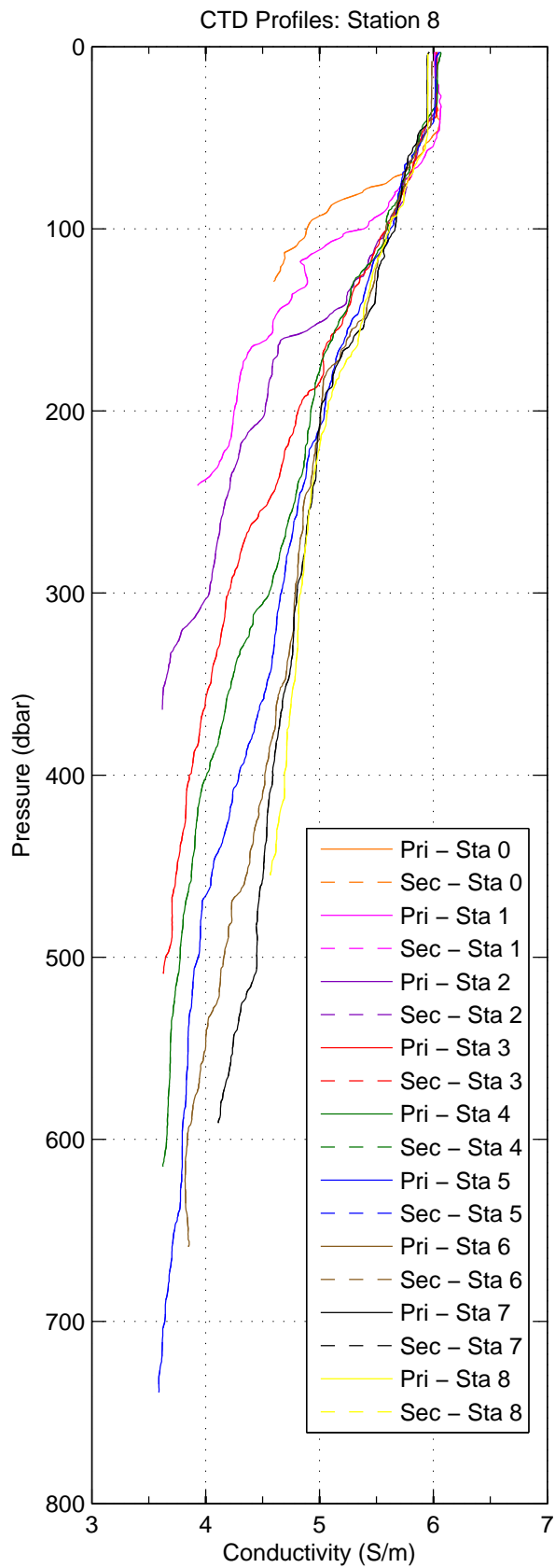


Figure 2: WS0621

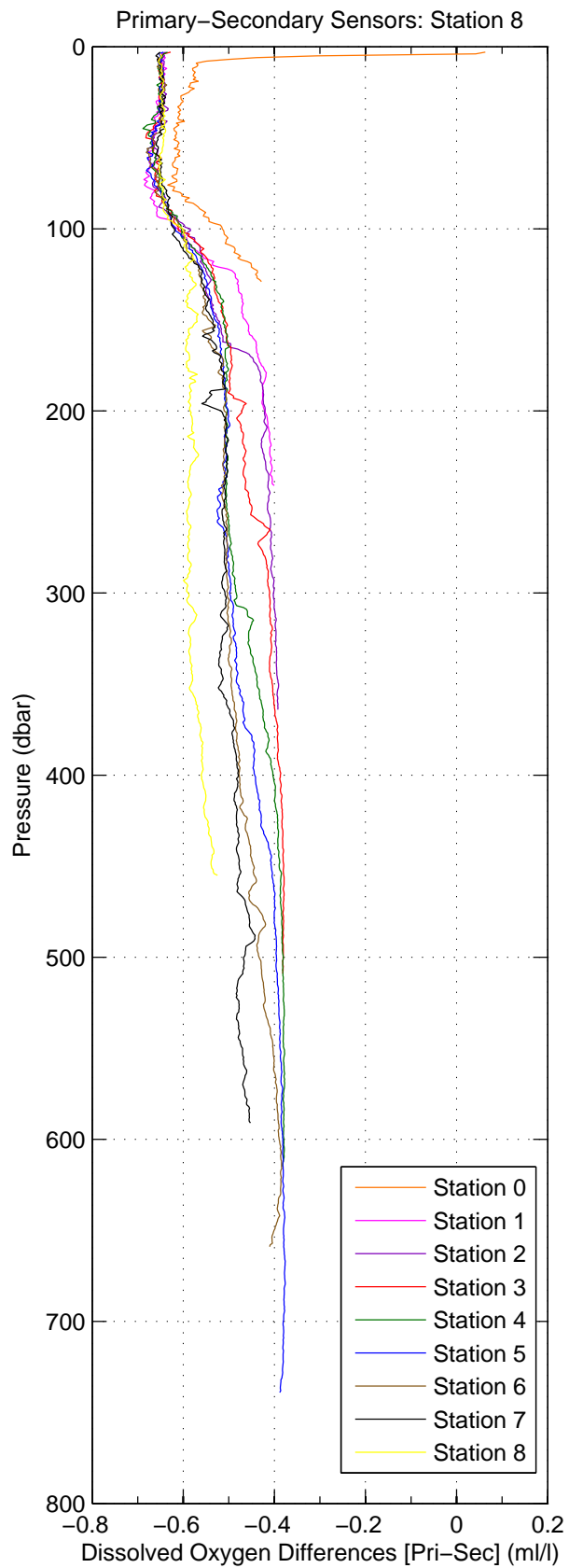
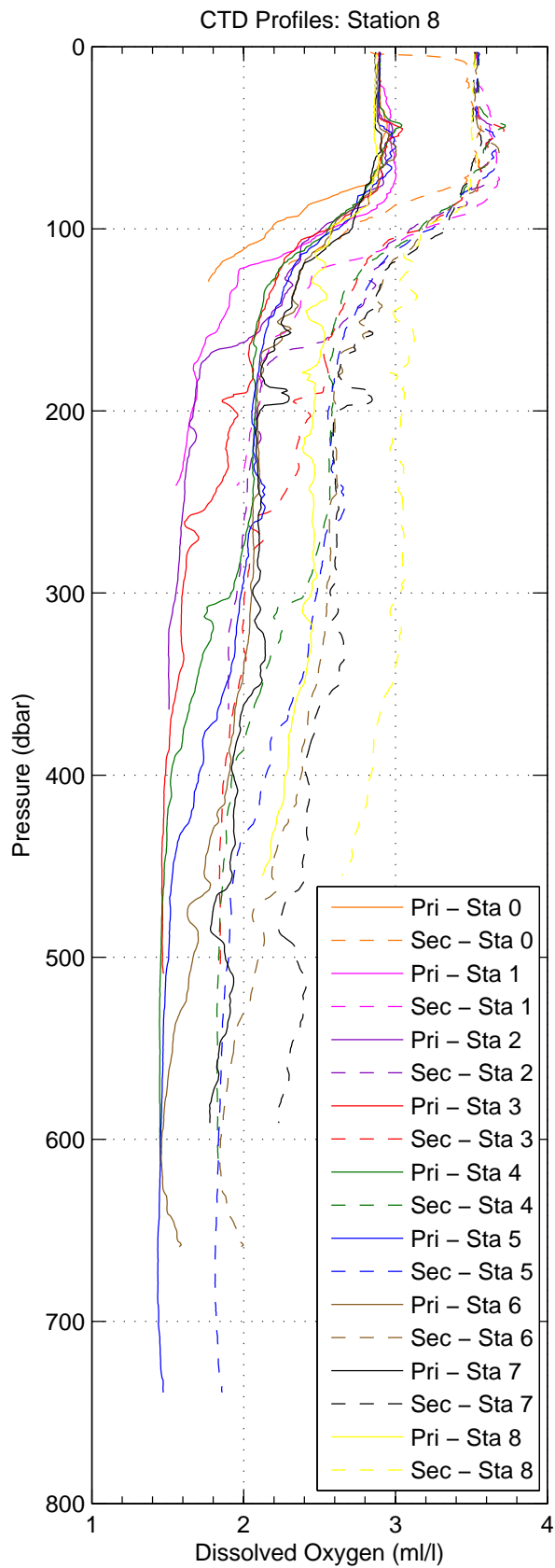


Figure 3: WS0621

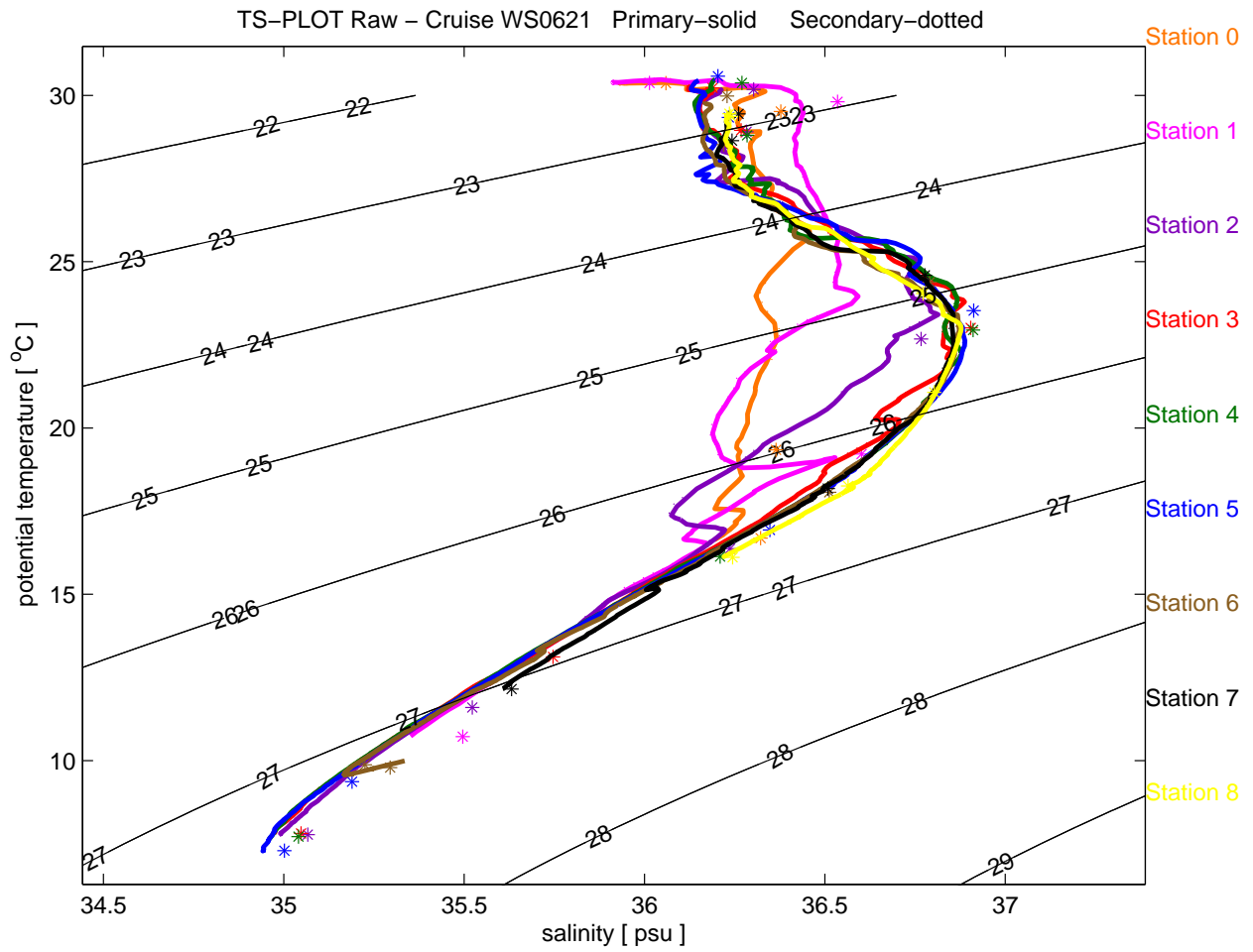


Figure 4: WS0621

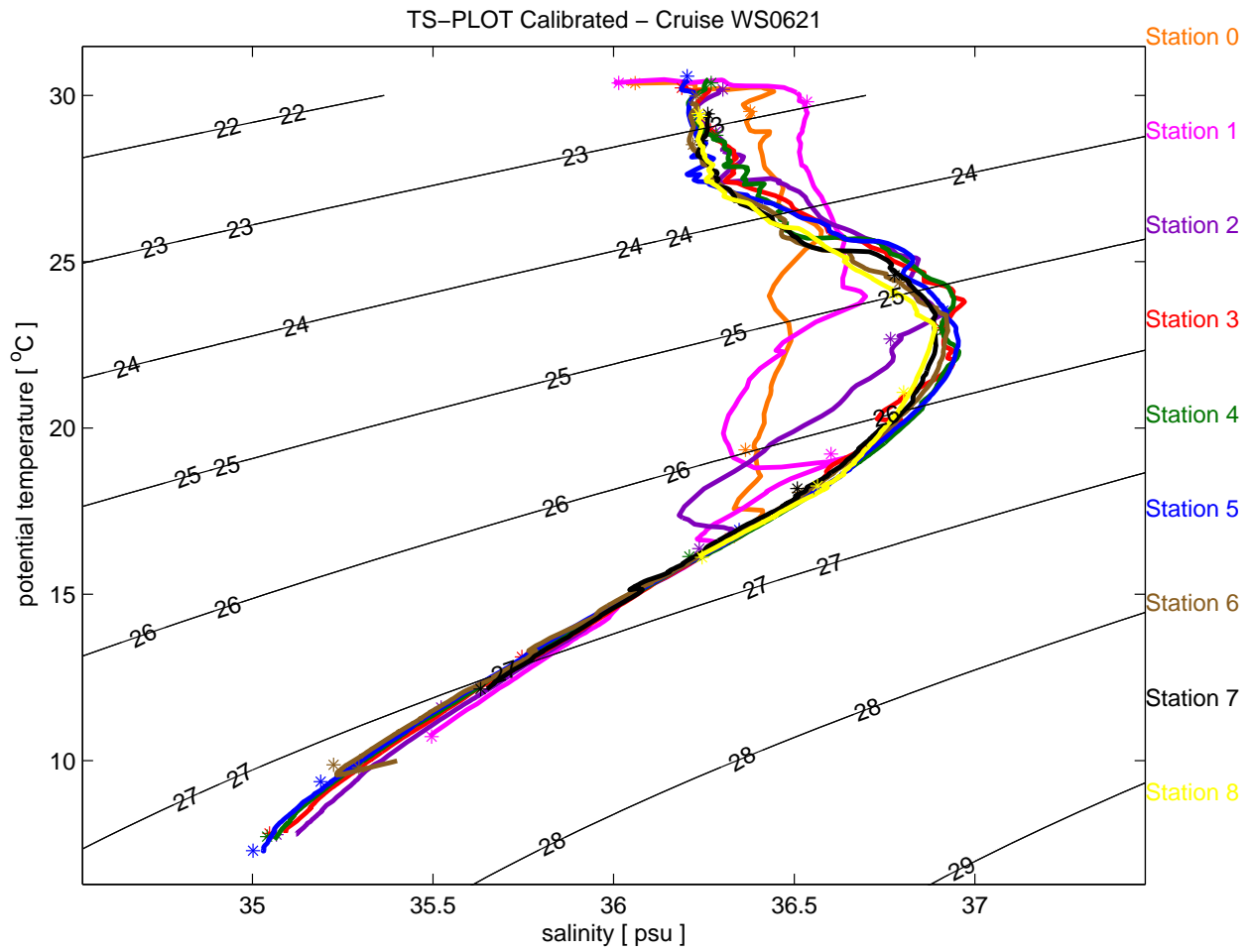


Figure 5: WS0621

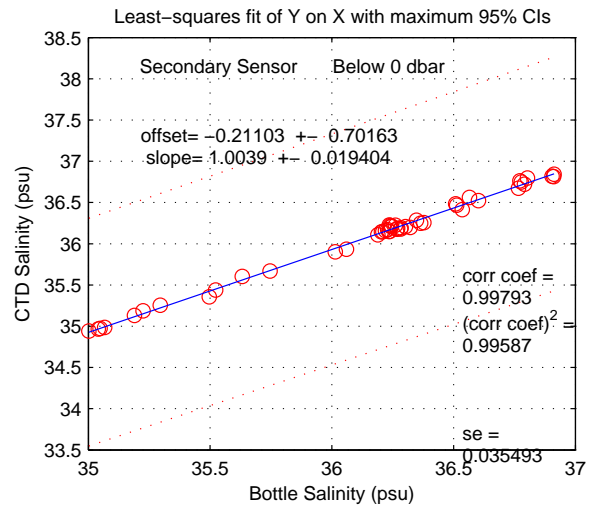
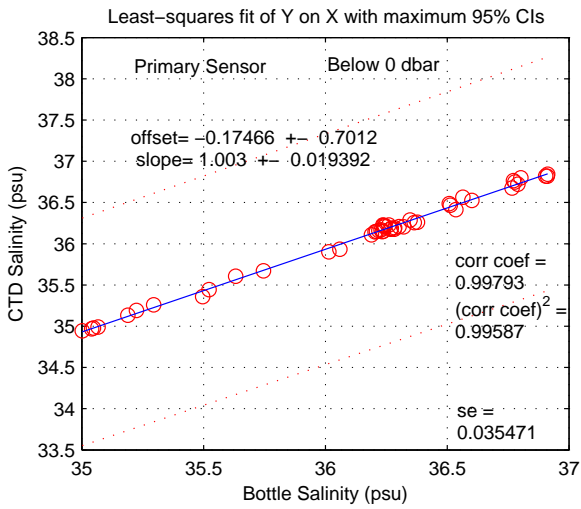
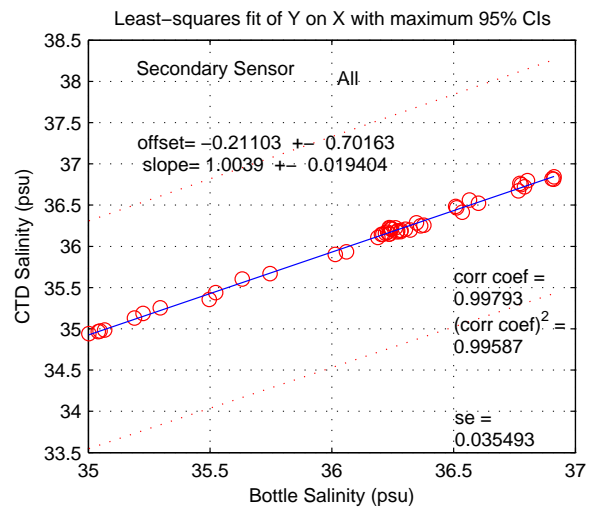
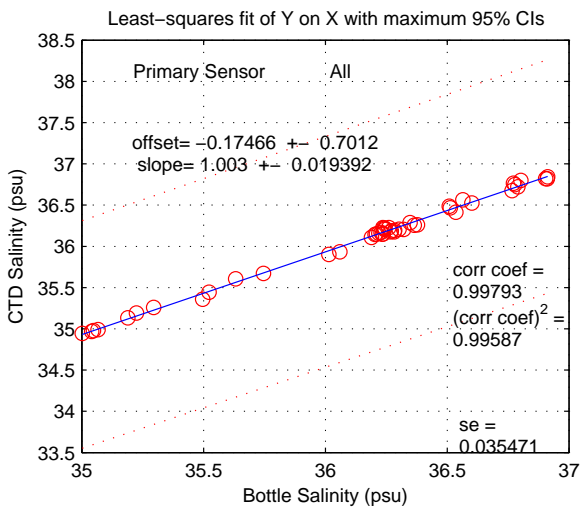
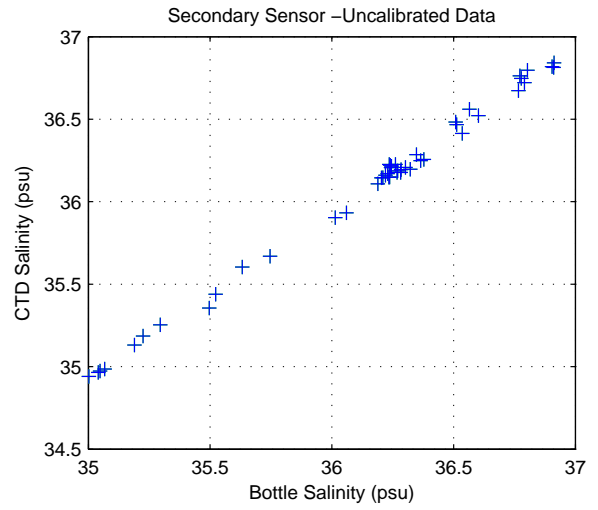
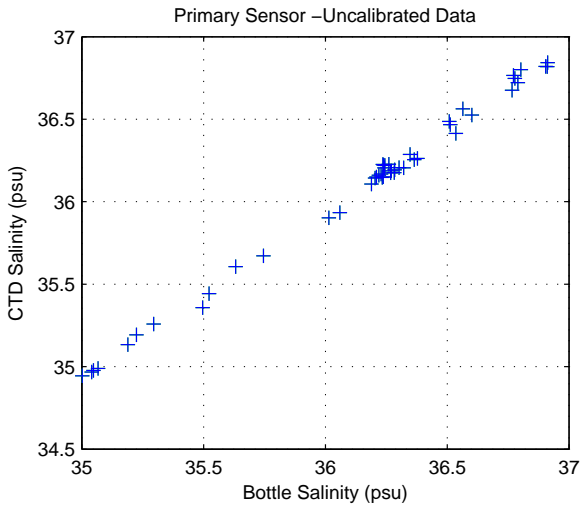


Figure 6: WS0621

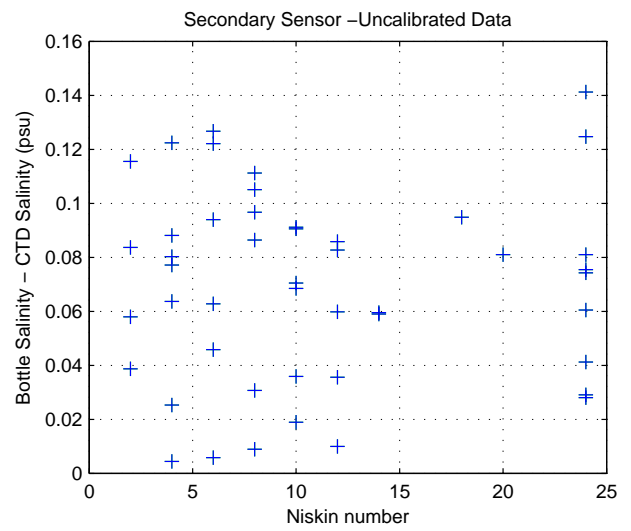
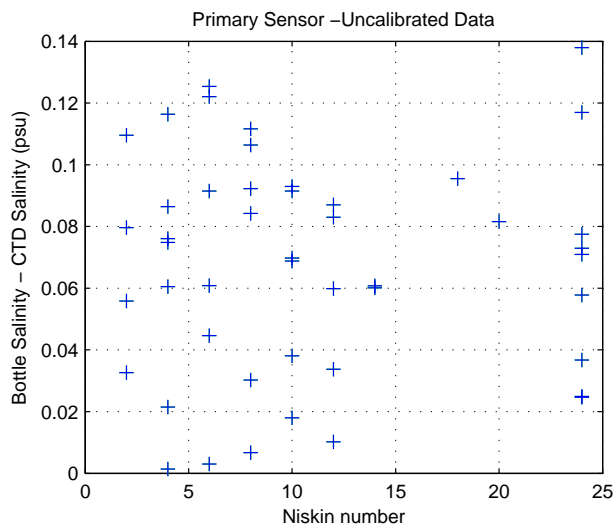
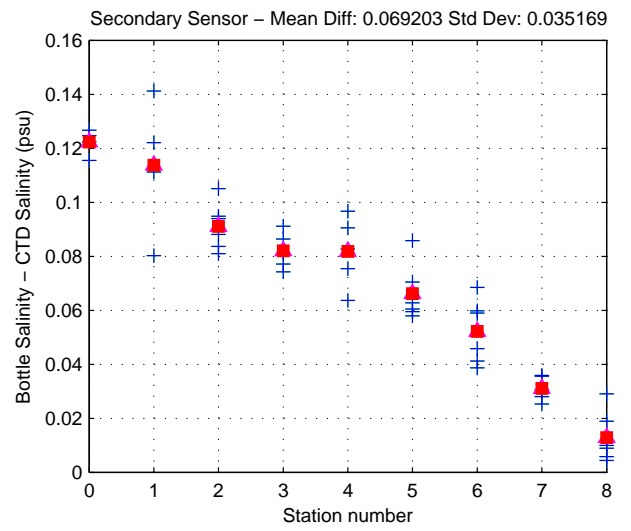
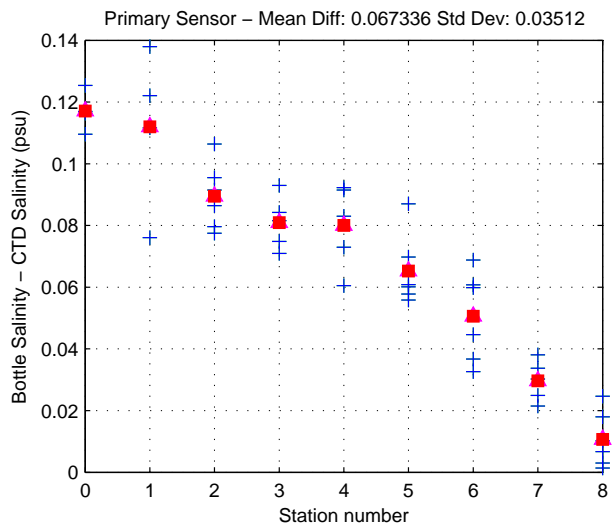
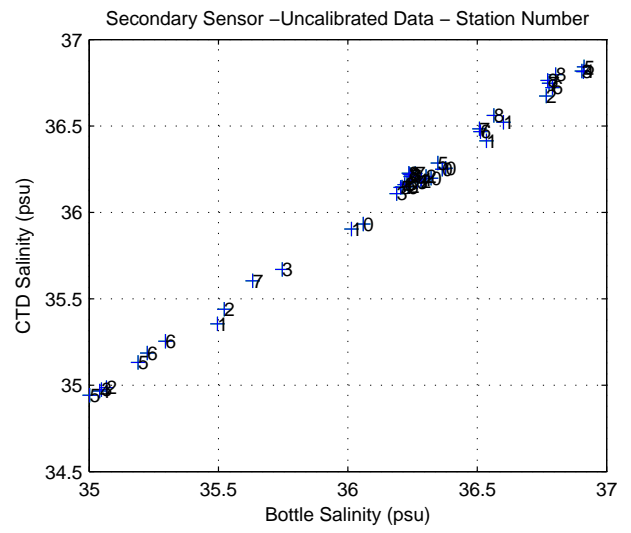
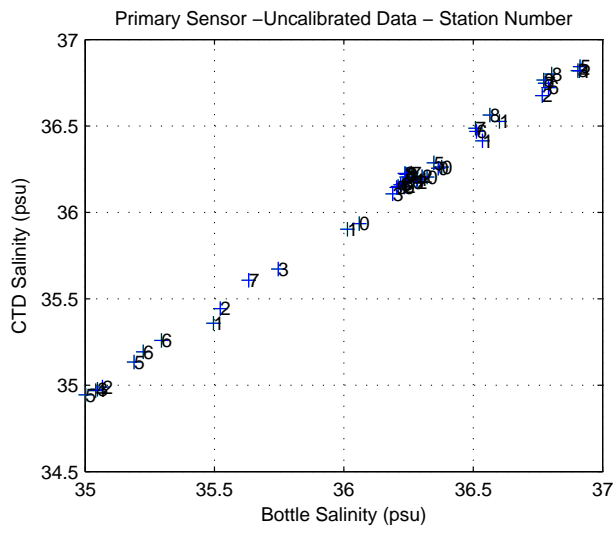


Figure 7: WS0621



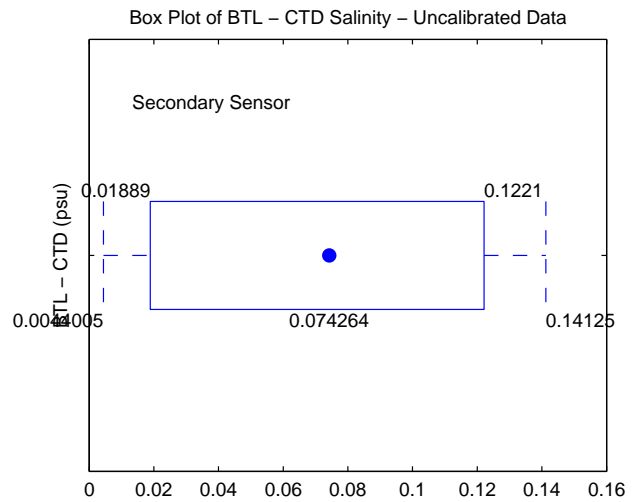
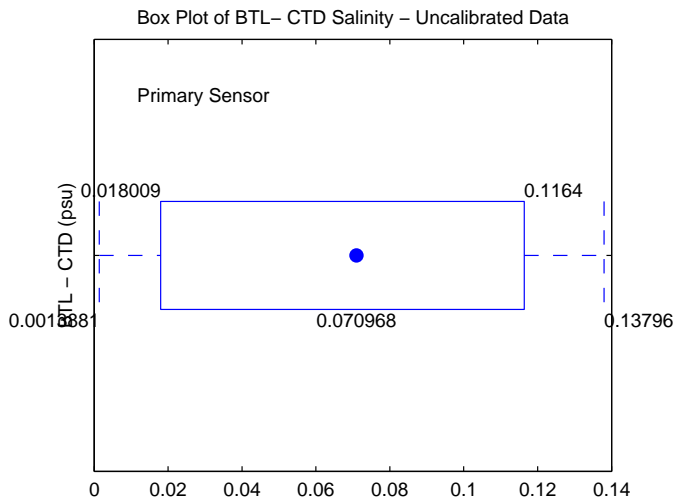
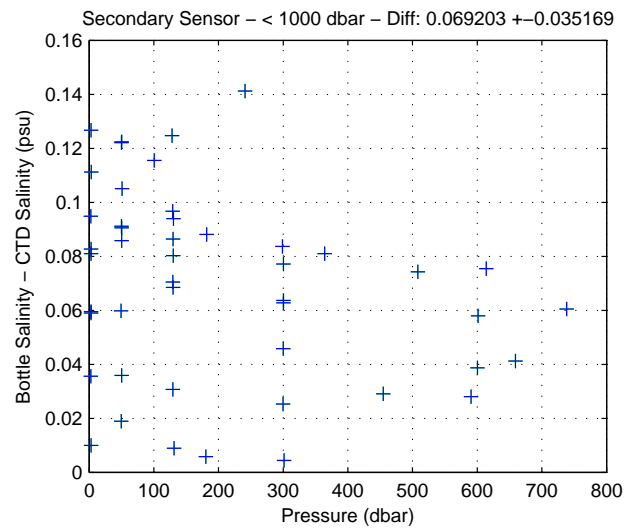
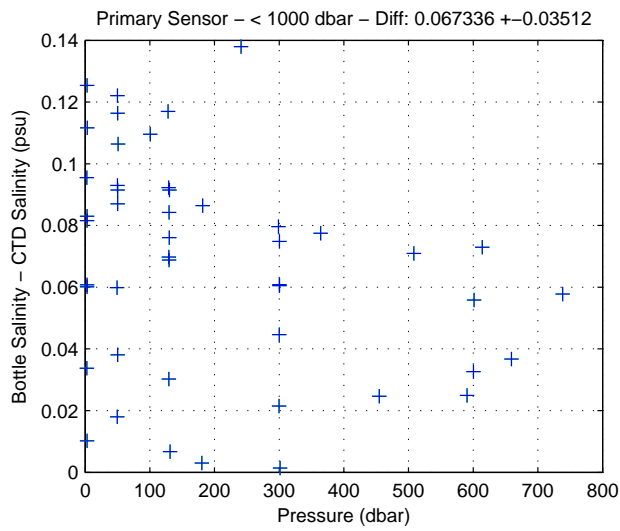
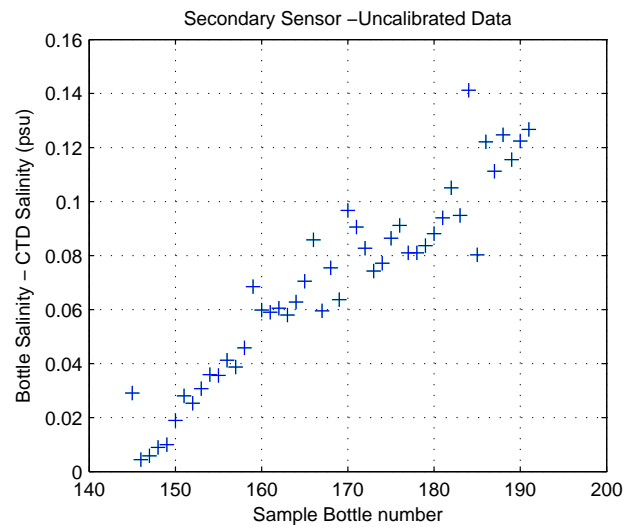
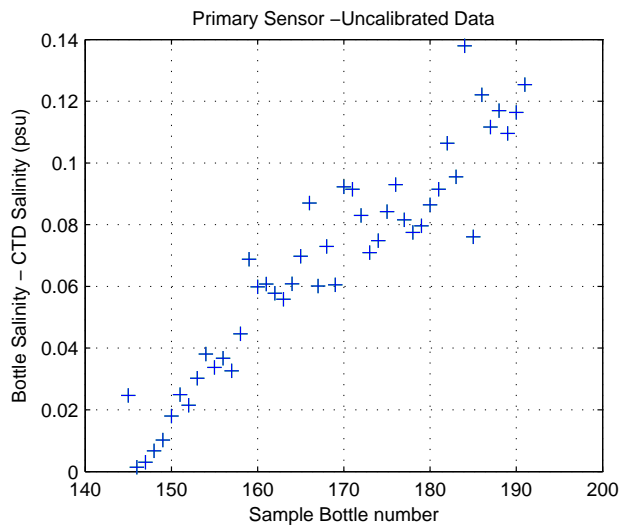


Figure 8: WS0621

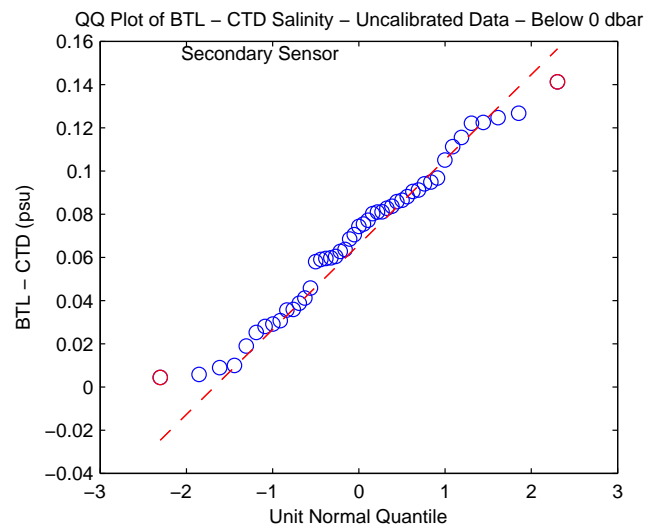
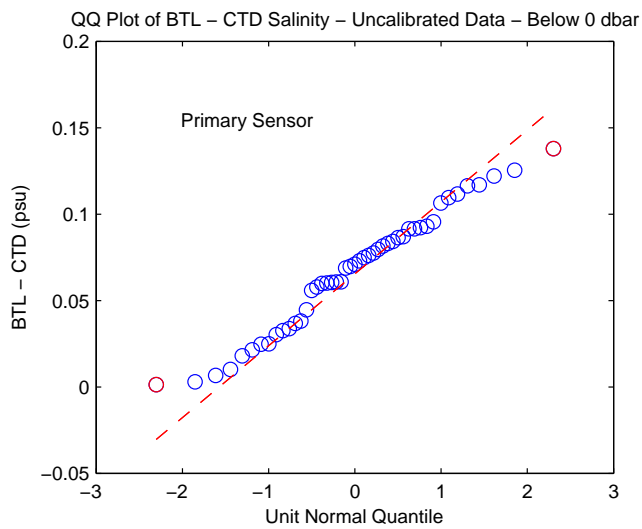
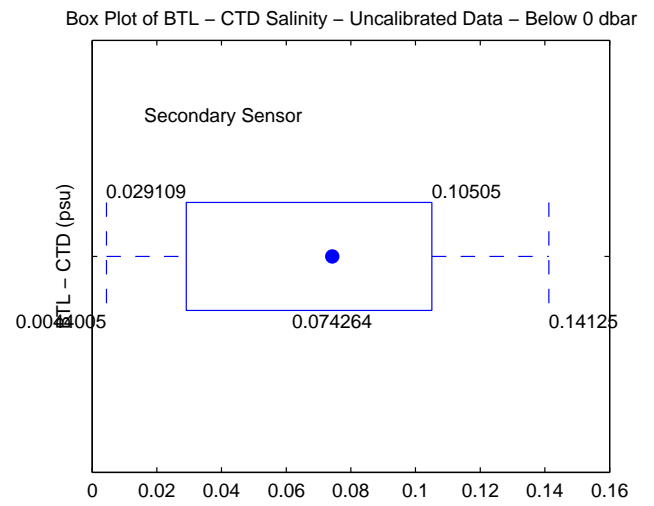
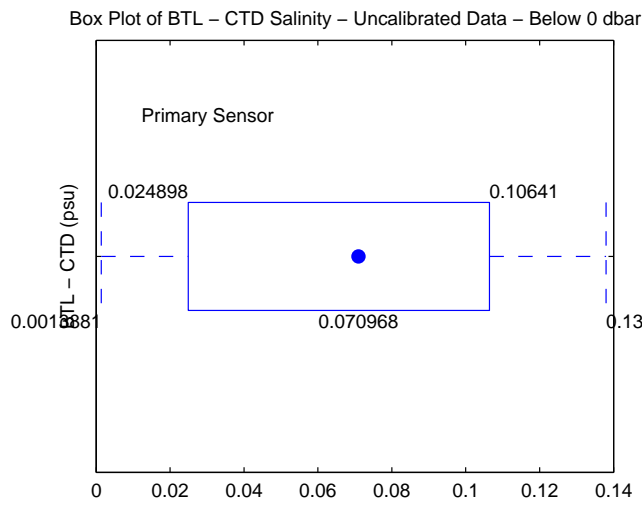
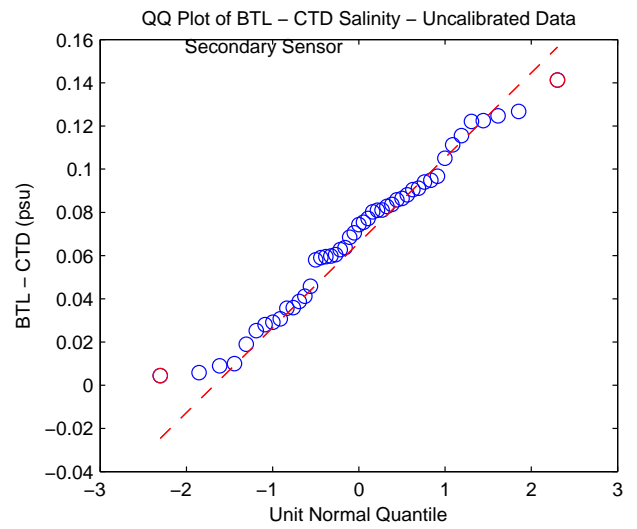
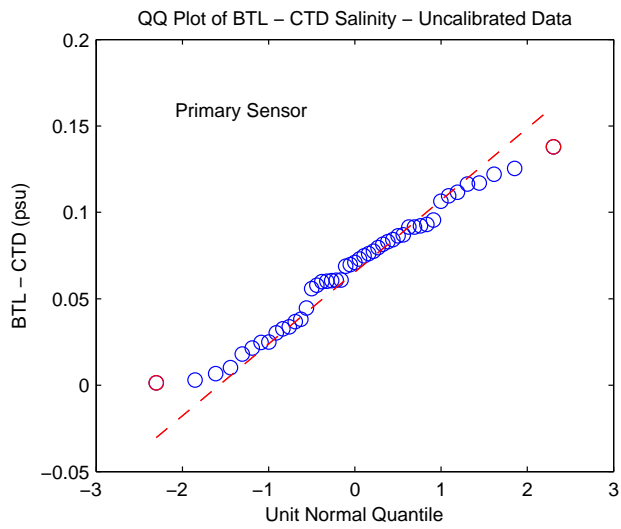


Figure 9: WS0621

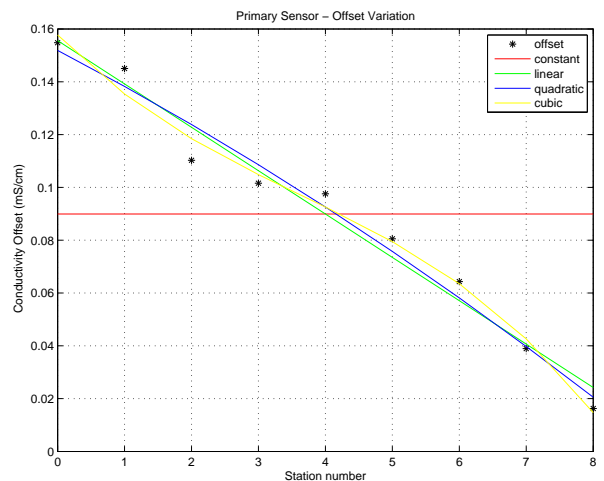
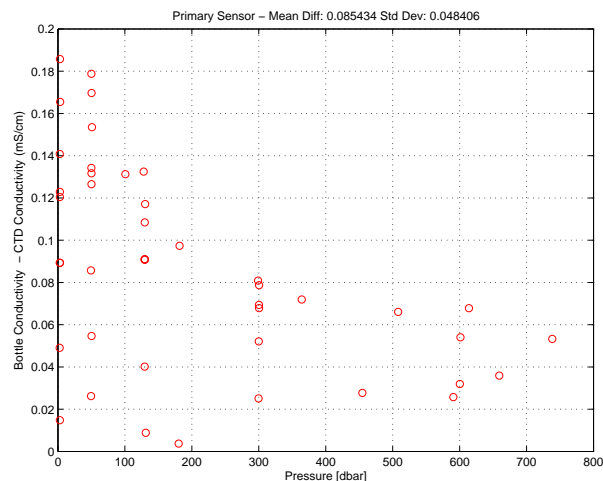
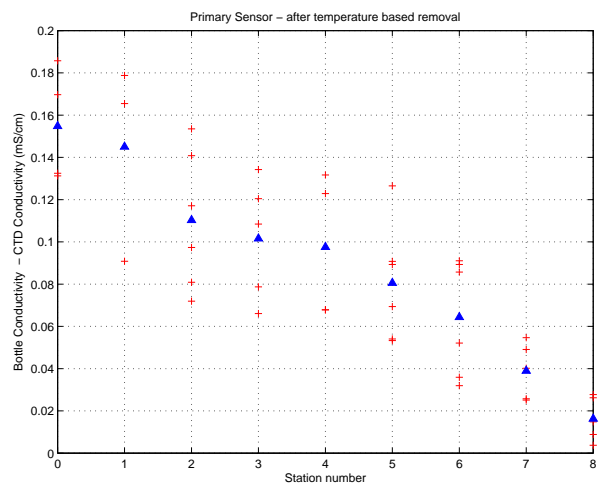
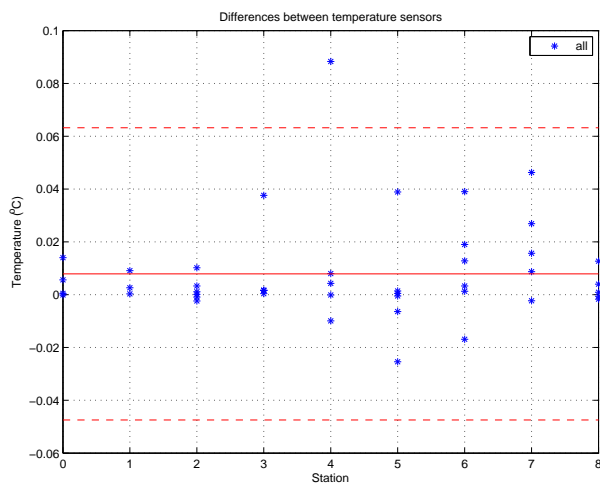
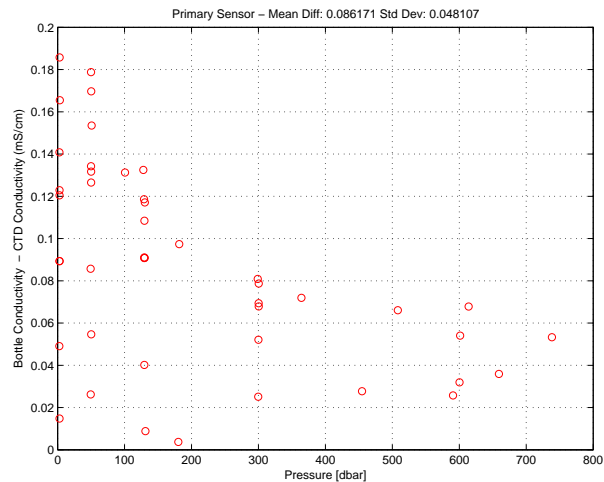
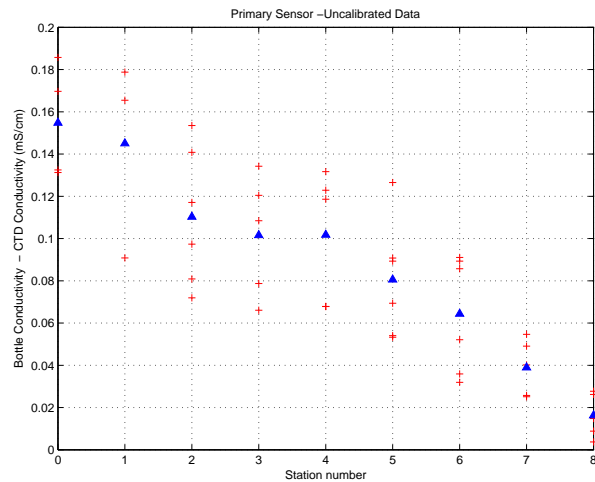


Figure 10: WS0621. Conductivity Calibration

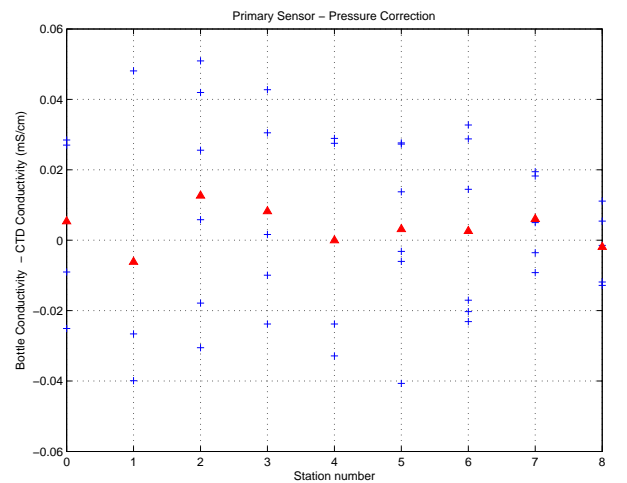
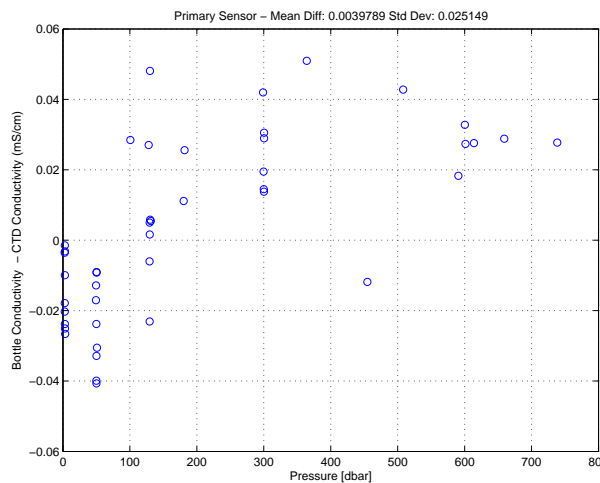
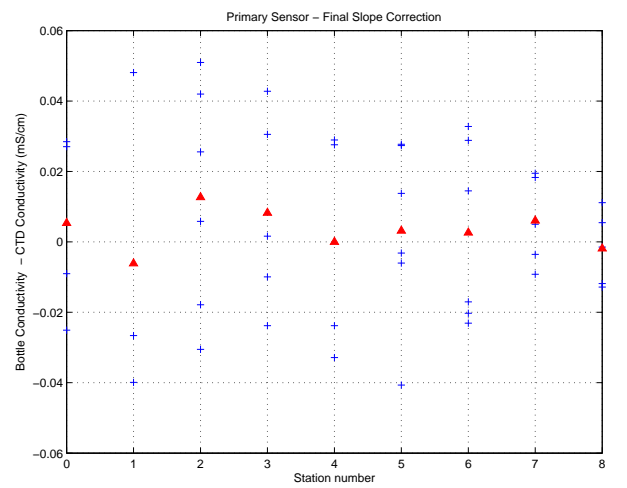
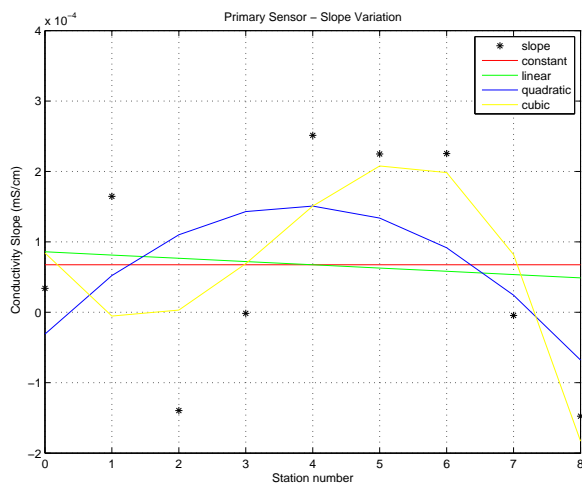
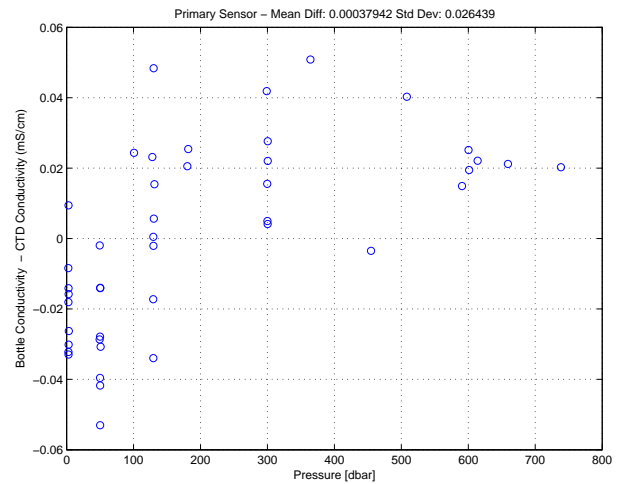
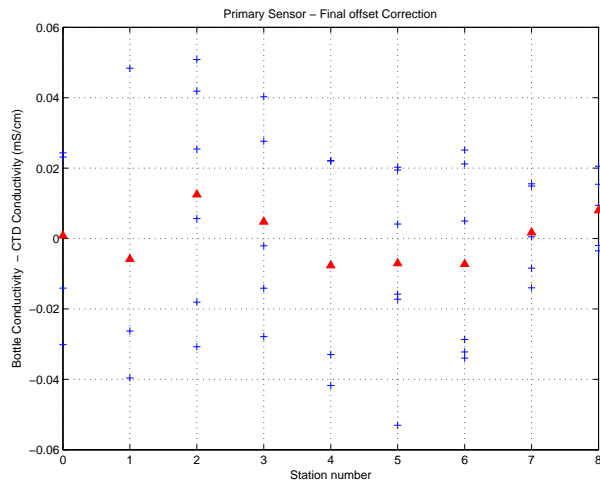


Figure 11: WS0621. Conductivity Calibration (cont.)

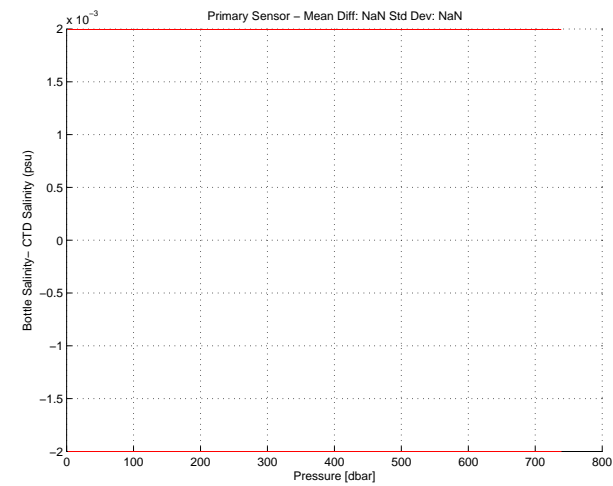
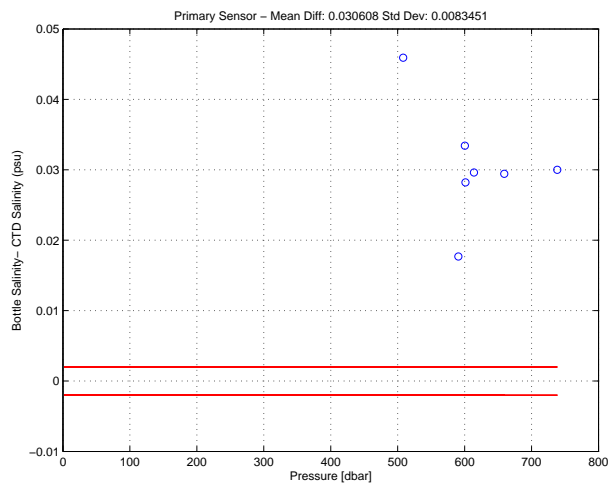
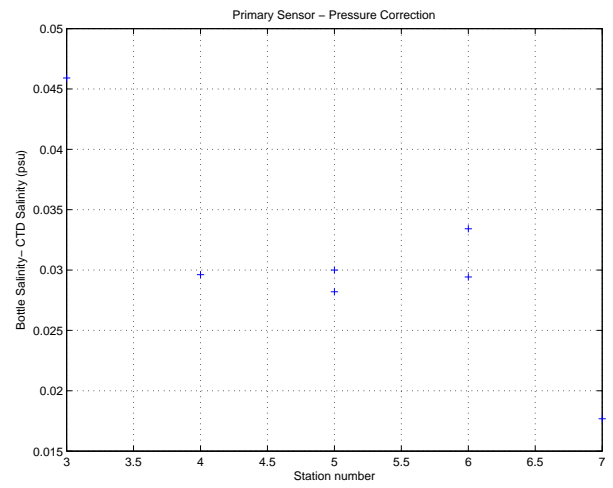
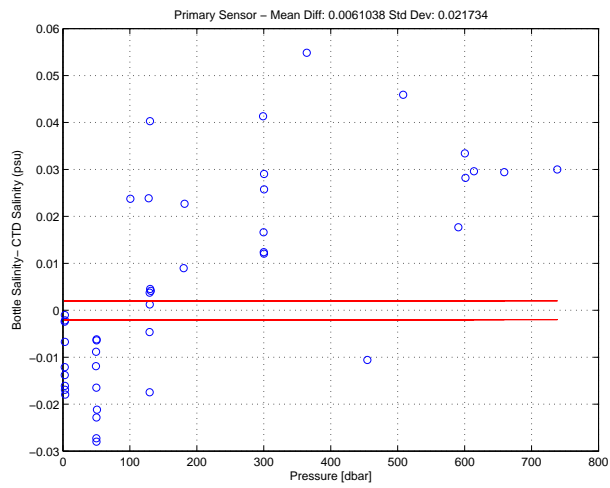
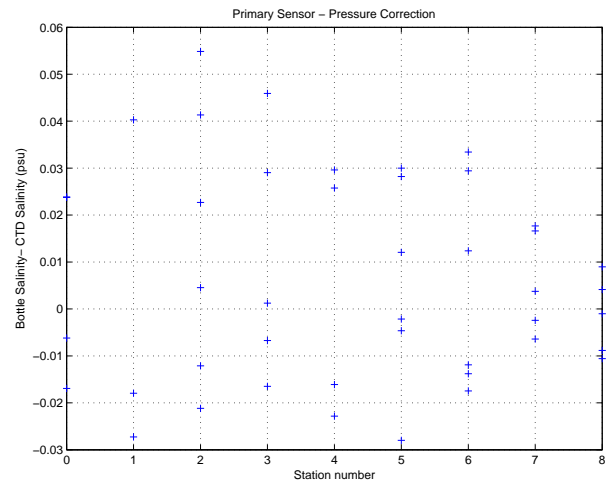
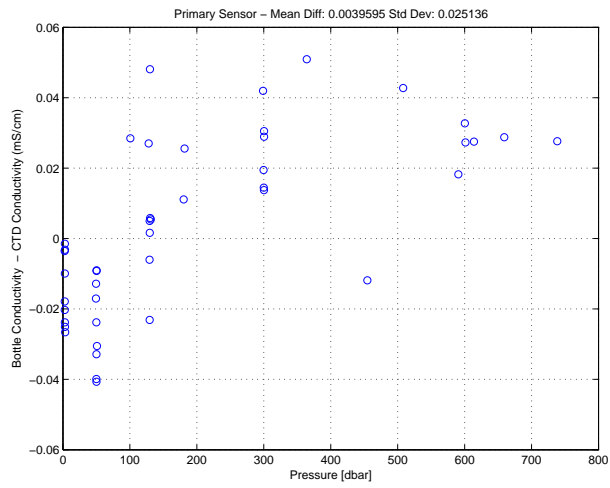


Figure 12: WS0621. Conductivity Calibration (cont.)

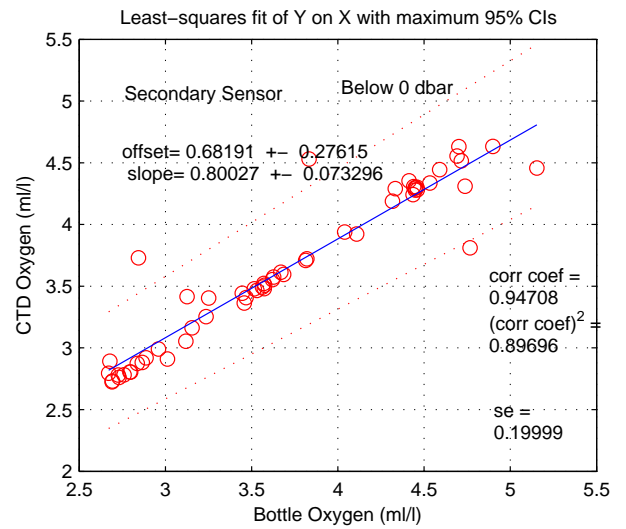
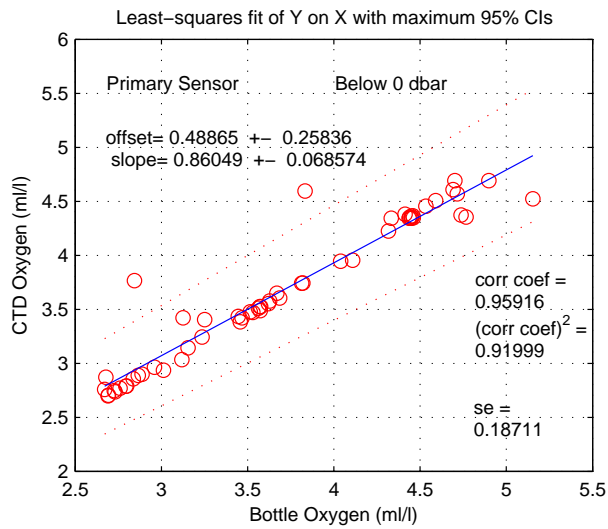
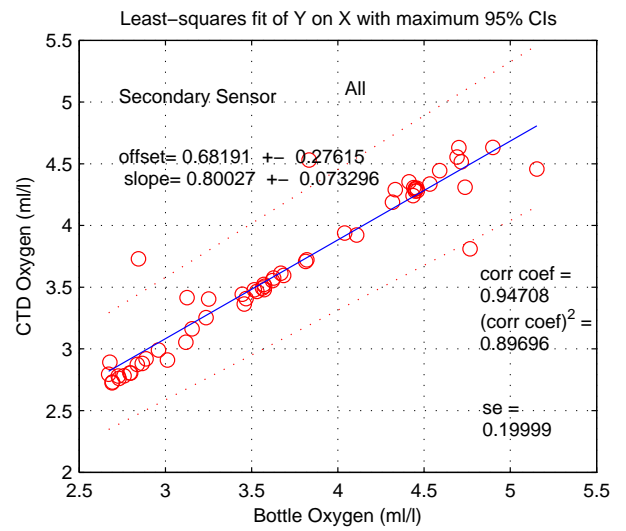
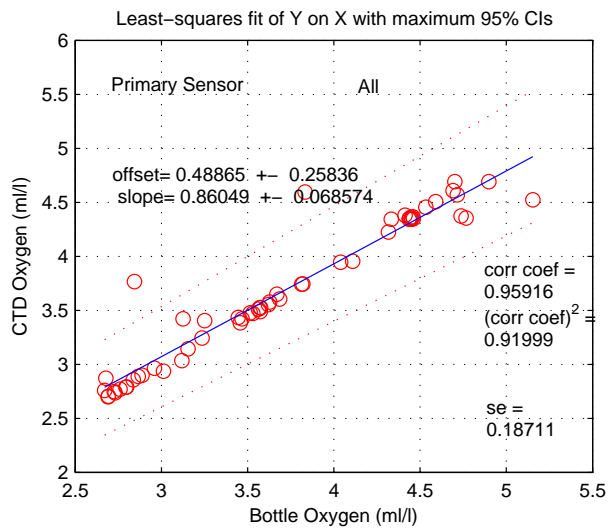
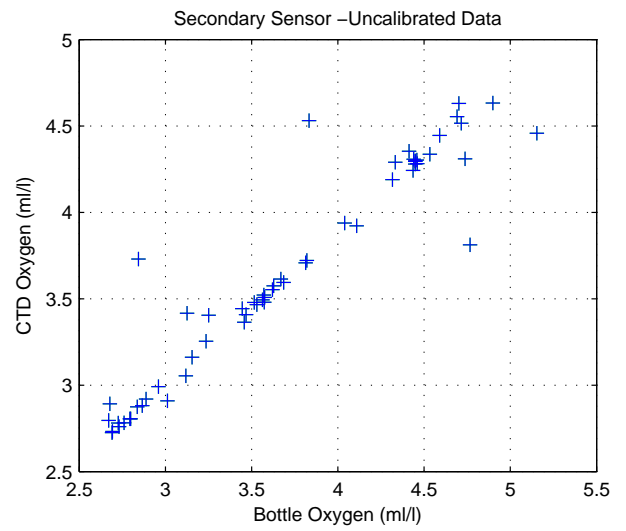
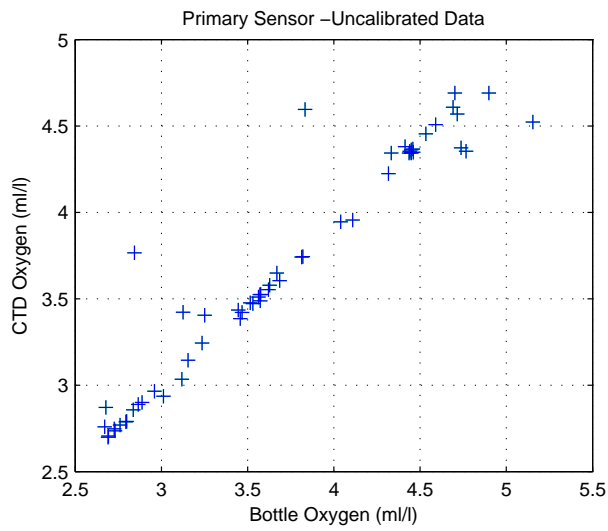


Figure 13: WS0621

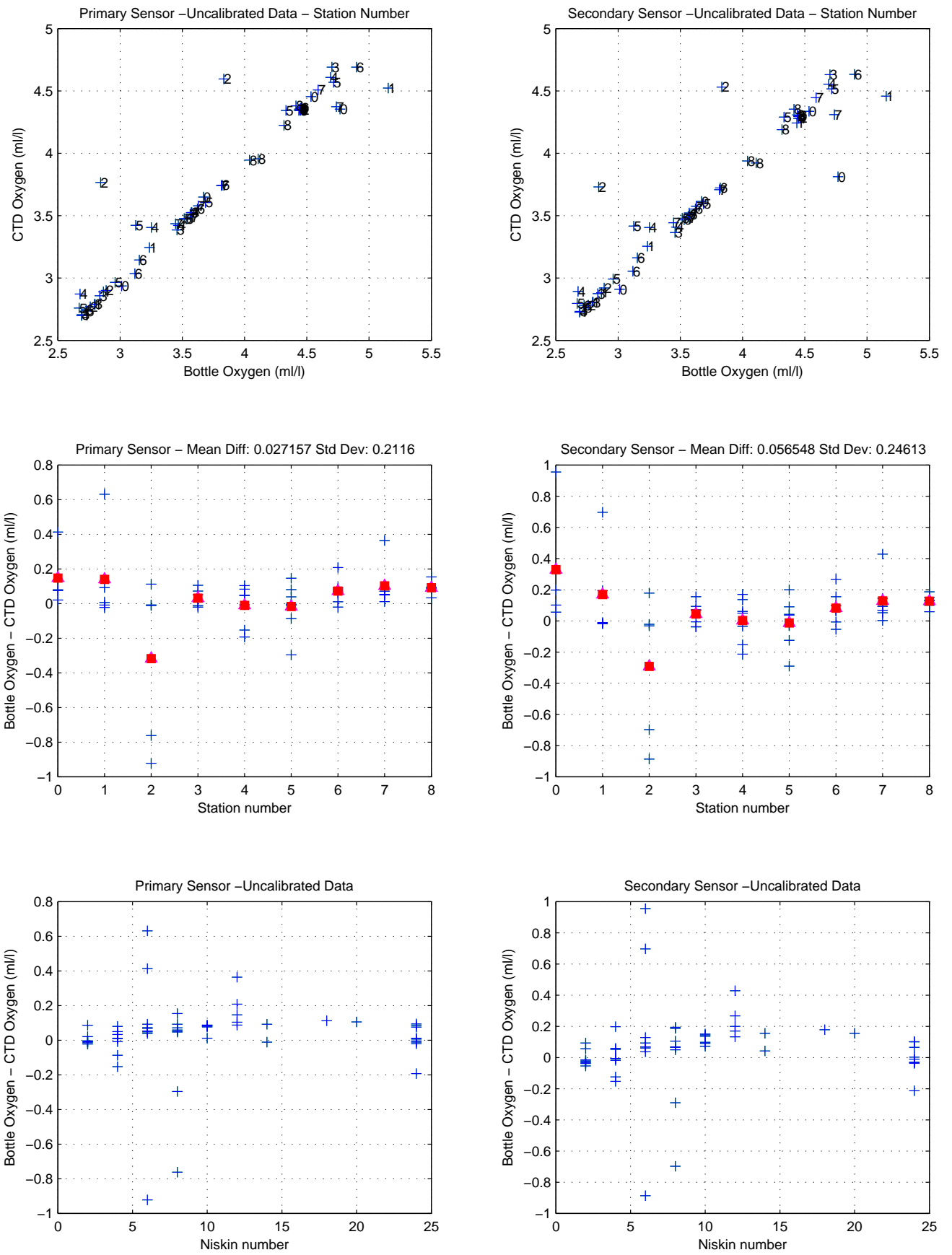


Figure 14: WS0621

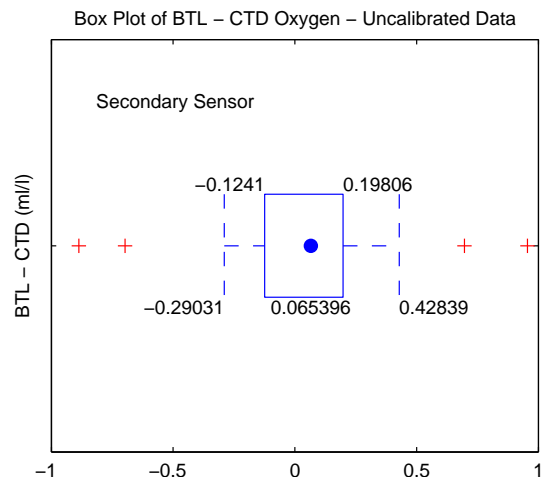
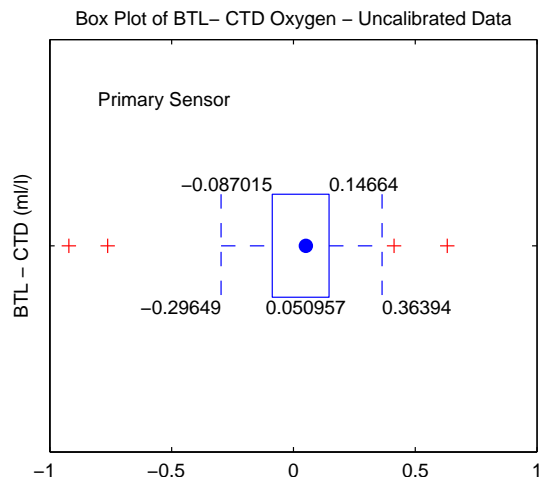
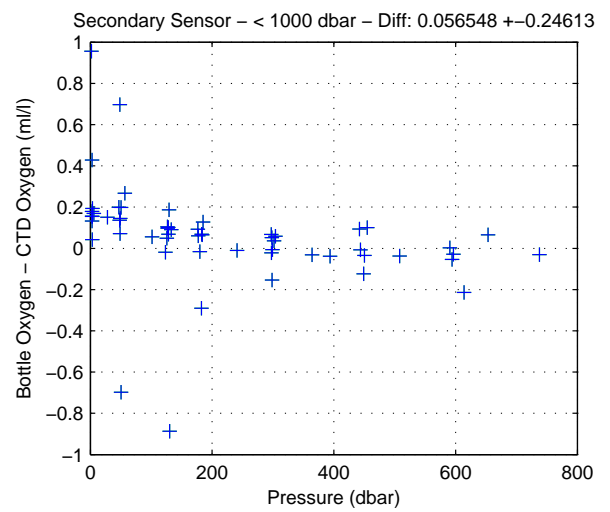
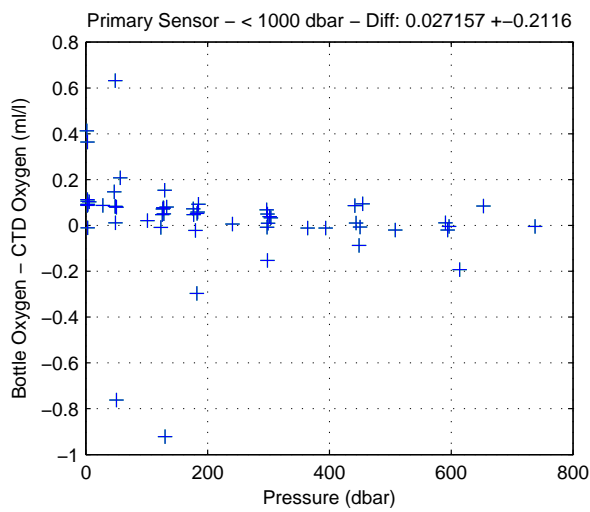
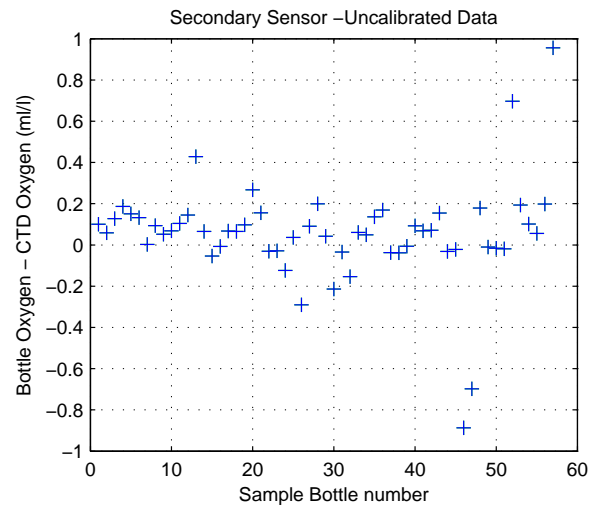
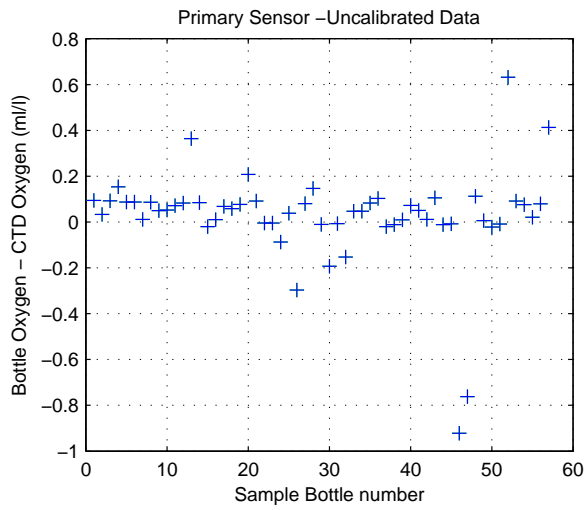
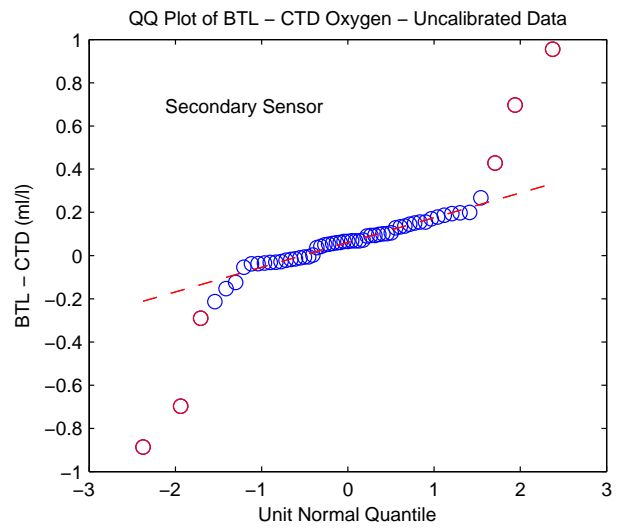
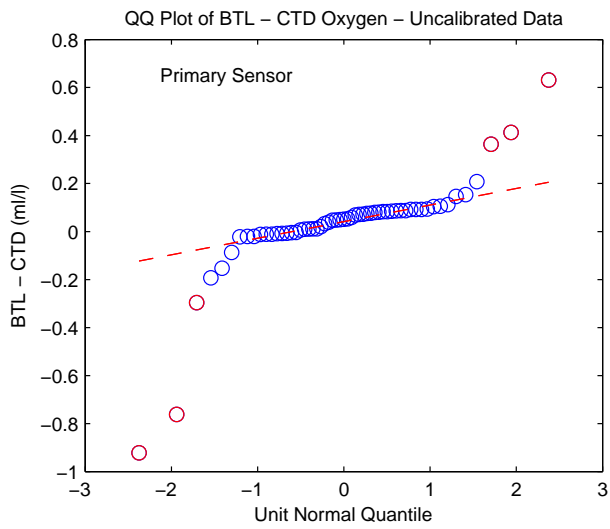
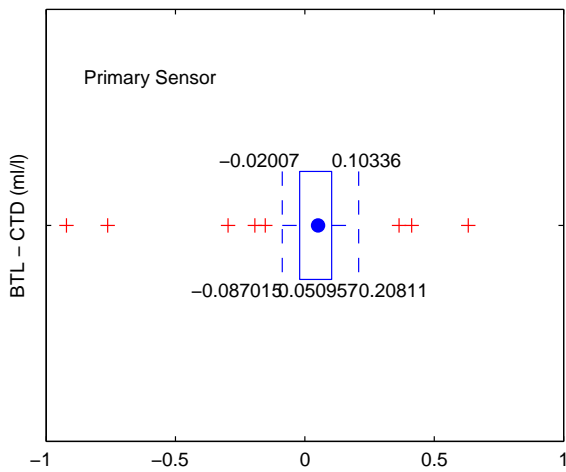


Figure 15: WS0621

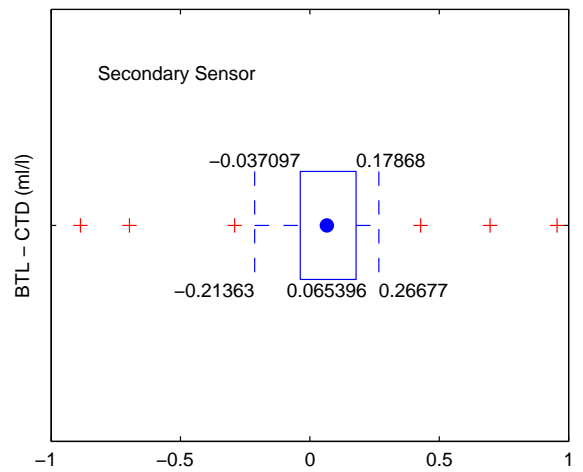




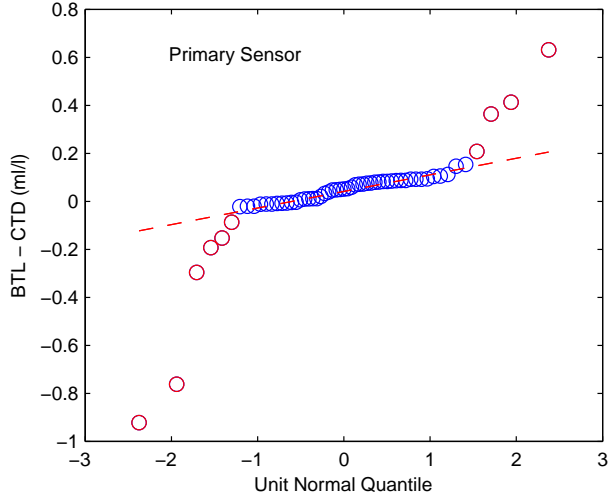
Box Plot of BTL – CTD Oxygen – Uncalibrated Data – Below 0 dbar



Box Plot of BTL – CTD Oxygen – Uncalibrated Data – Below 0 dbar



QQ Plot of BTL – CTD Oxygen – Uncalibrated Data – Below 0 dbar



QQ Plot of BTL – CTD Oxygen – Uncalibrated Data – Below 0 dbar

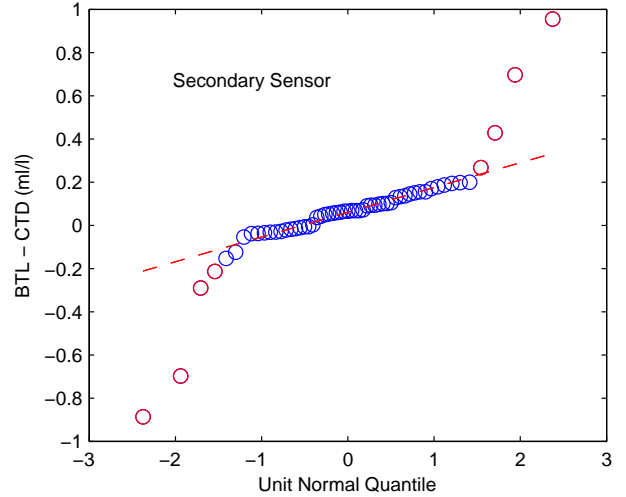


Figure 16: WS0621

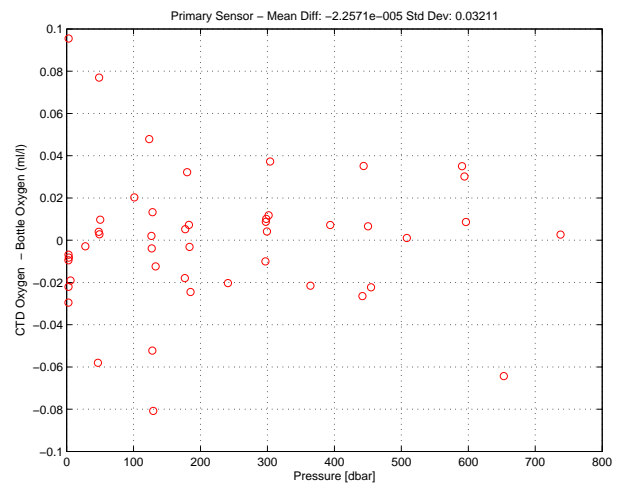
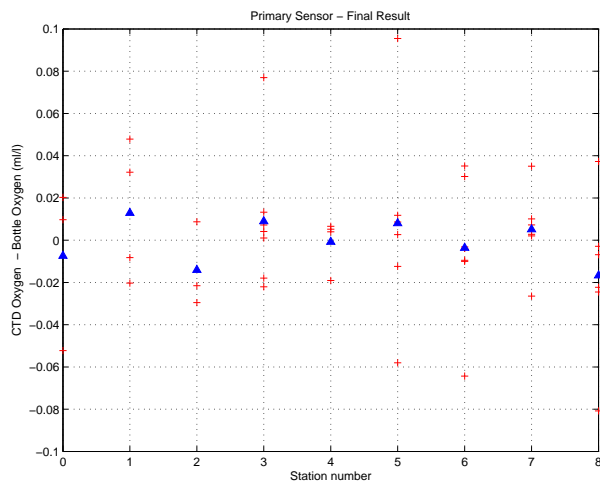
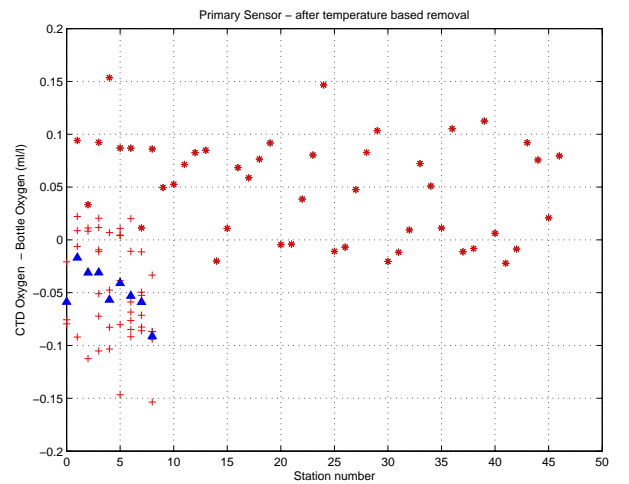
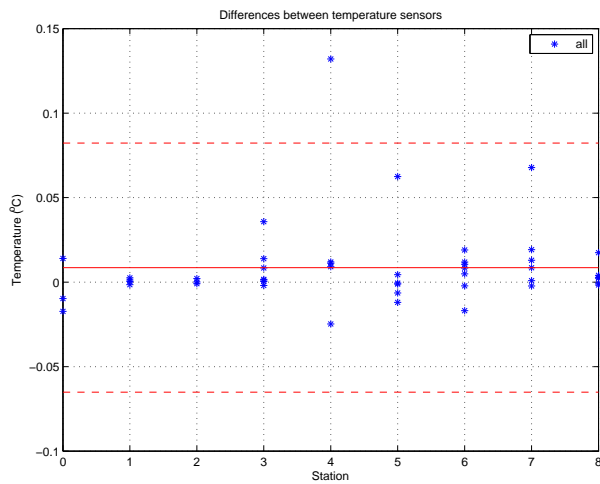
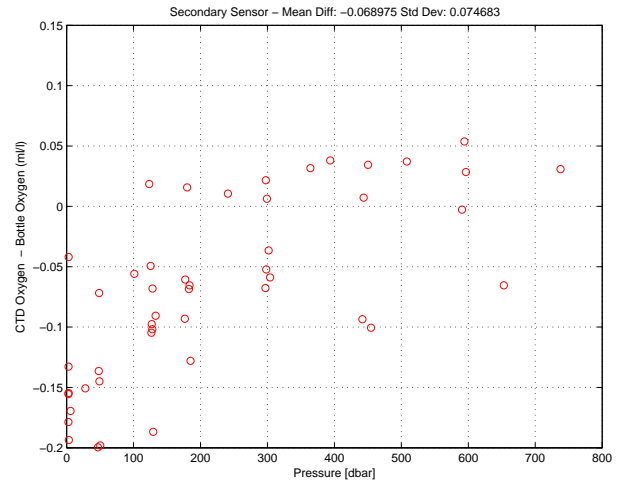
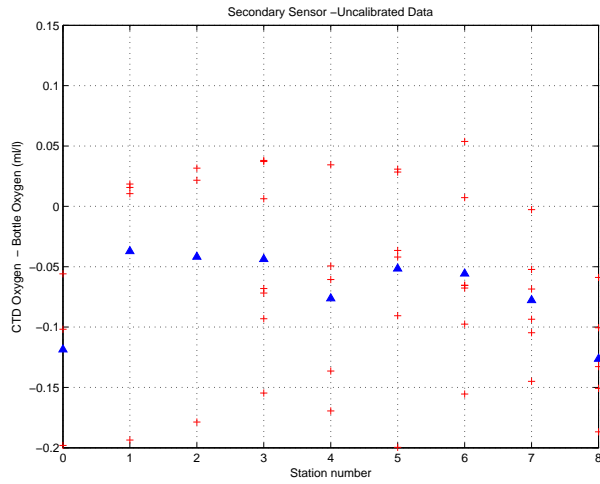


Figure 17: WS0621. Oxygen Calibration

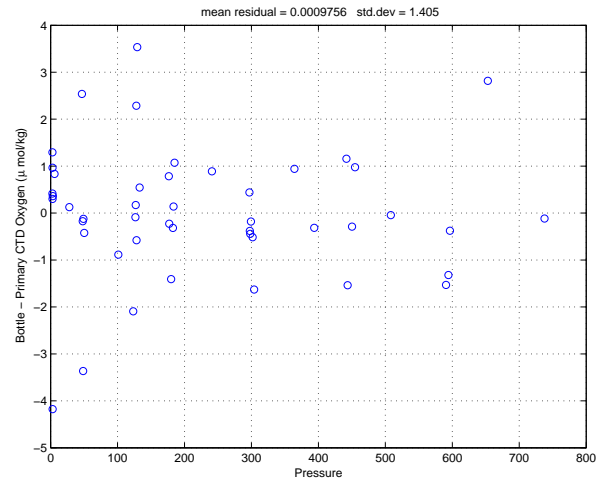
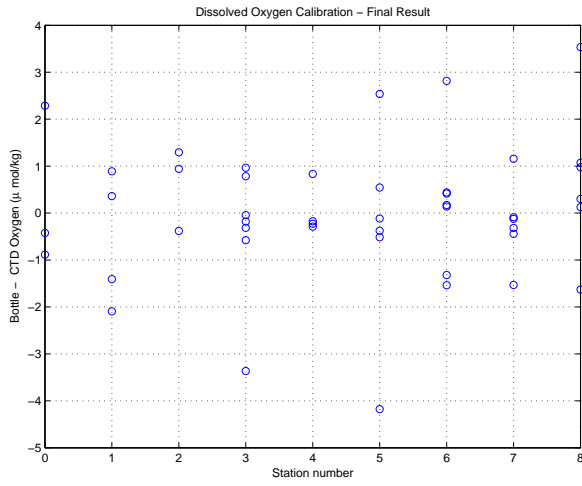


Figure 18: WS0621. Oxygen Calibration (cont.)

Florida Straits R/V FG Walton Smith  
 CTD Station 0 (CTD000)  
 Latitude 27.004 N Longitude 79.930 W  
 19-Sep-2006 03:27 Z

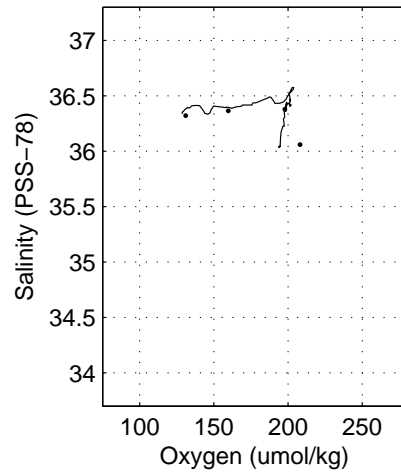
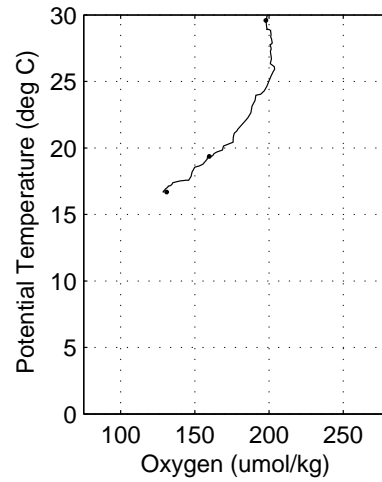
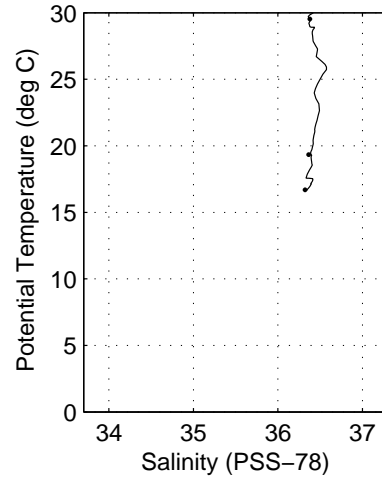
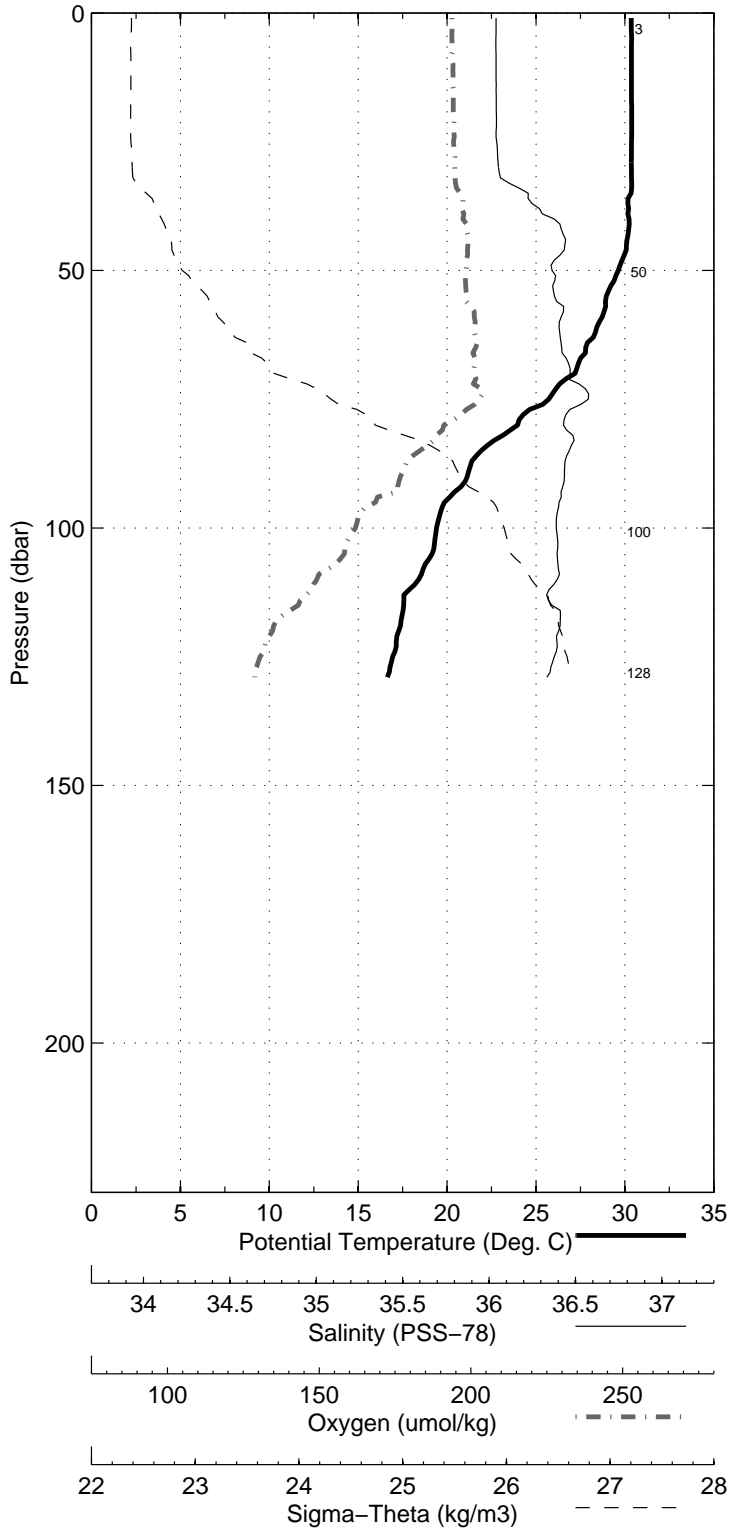


Figure 19: WS0621

Florida Straits R/V FG Walton Smith  
 CTD Station 1 (CTD001)  
 Latitude 27.004 N Longitude 79.867 W  
 19-Sep-2006 02:26 Z

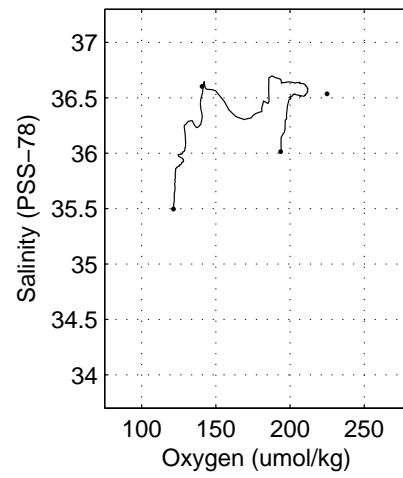
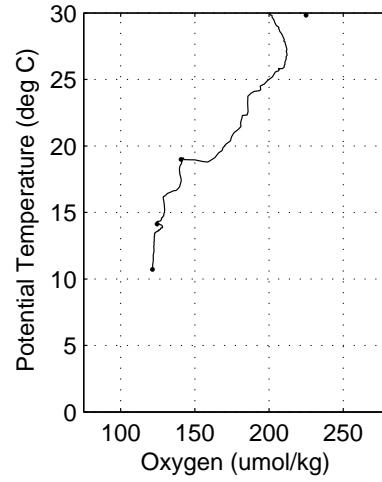
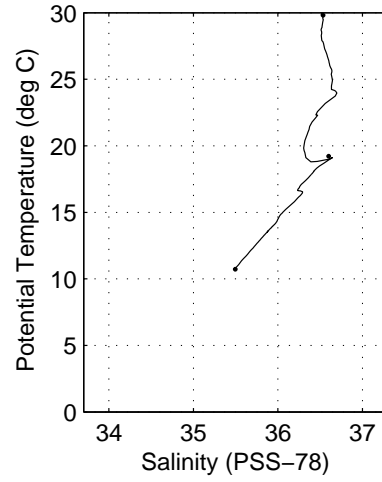
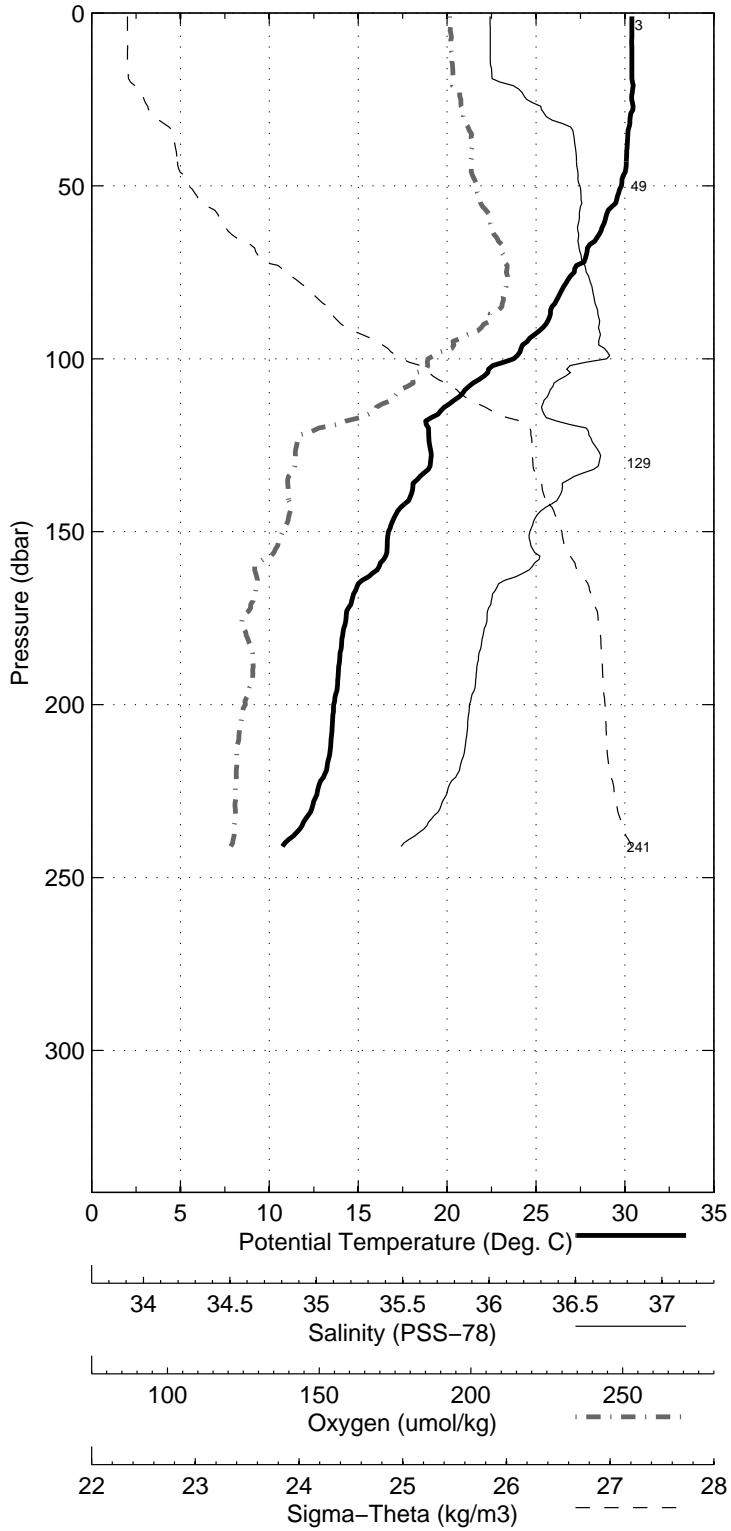


Figure 20: WS0621

Florida Straits R/V FG Walton Smith  
 CTD Station 2 (CTD002)  
 Latitude 27.002 N Longitude 79.783 W  
 19-Sep-2006 01:19 Z

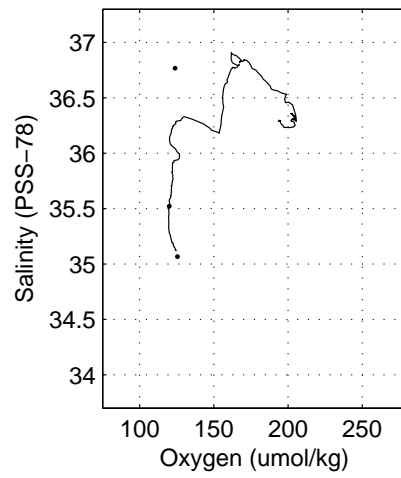
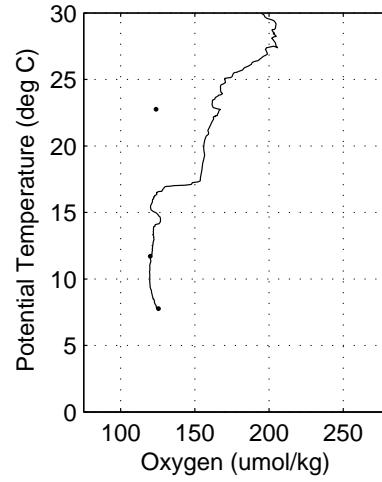
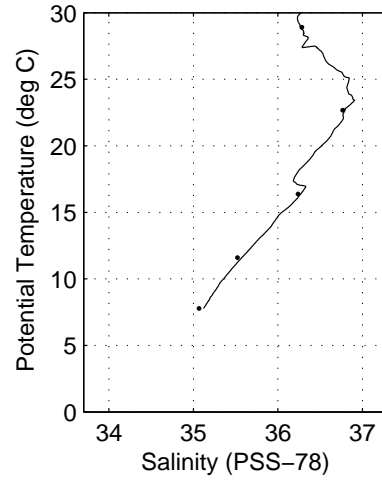
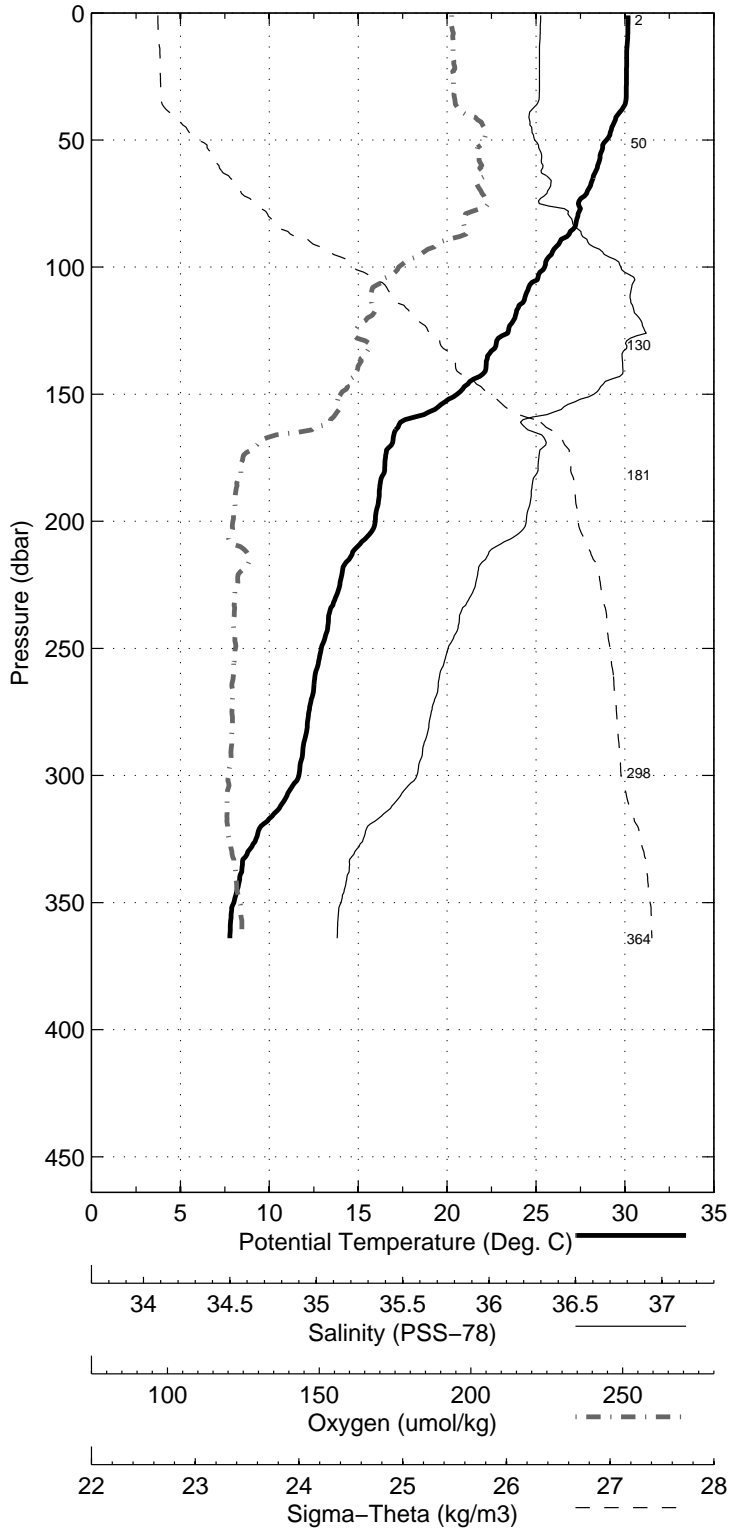


Figure 21: WS0621

Florida Straits R/V FG Walton Smith  
 CTD Station 3 (CTD003)  
 Latitude 27.003 N Longitude 79.684 W  
 19-Sep-2006 00:01 Z

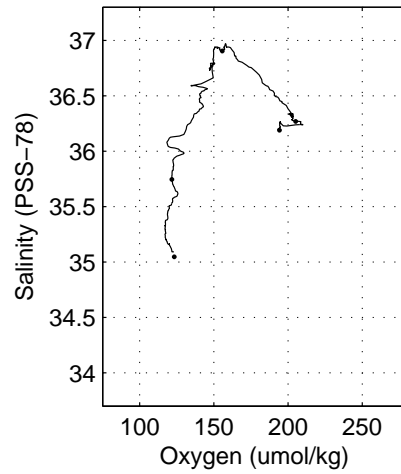
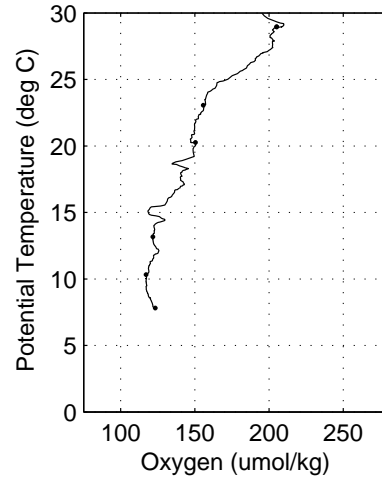
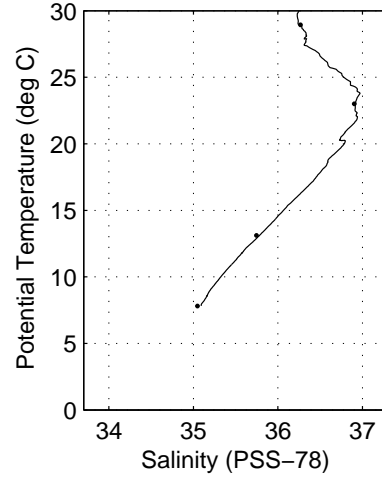
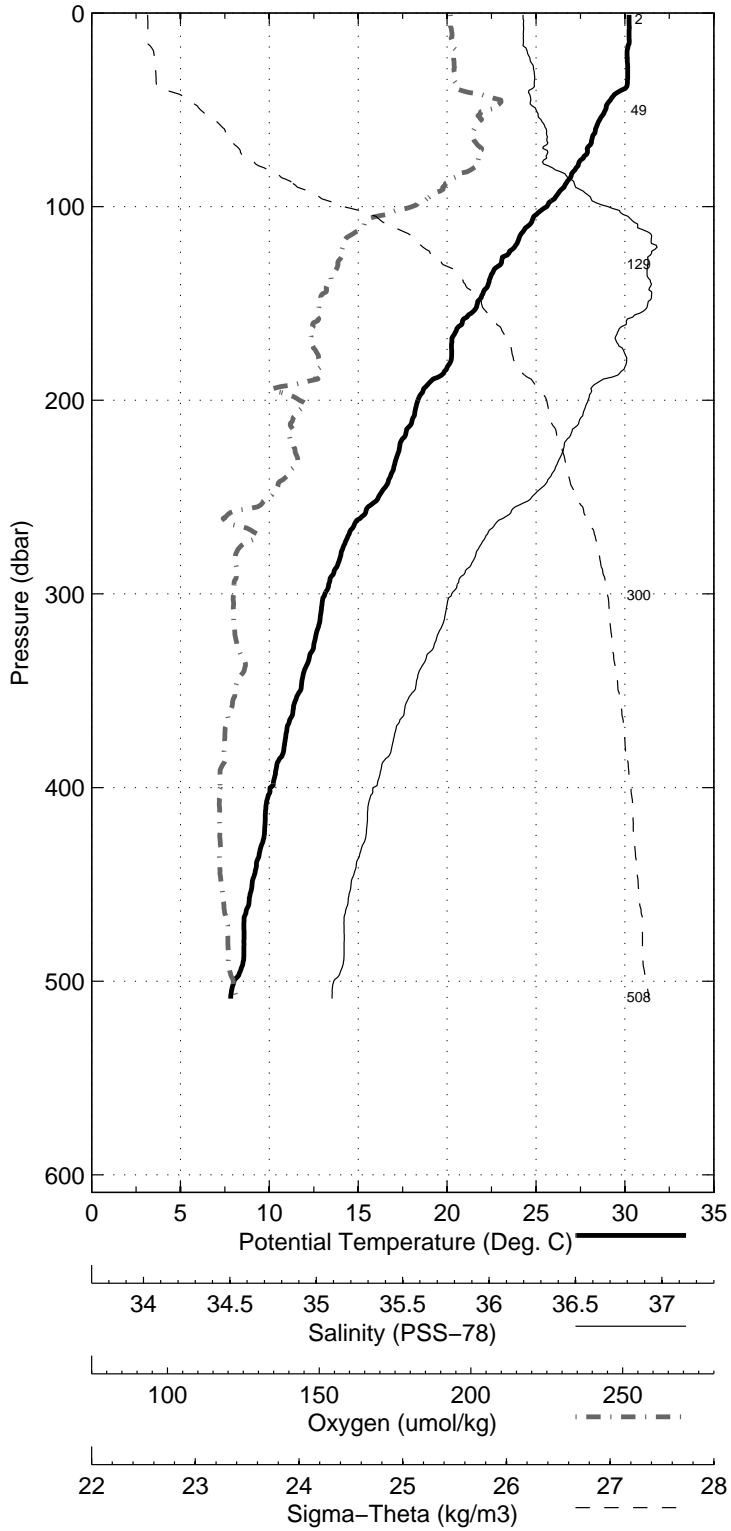


Figure 22: WS0621

Florida Straits R/V FG Walton Smith  
 CTD Station 4 (CTD004)  
 Latitude 27.002 N Longitude 79.617 W  
 18-Sep-2006 22:11 Z

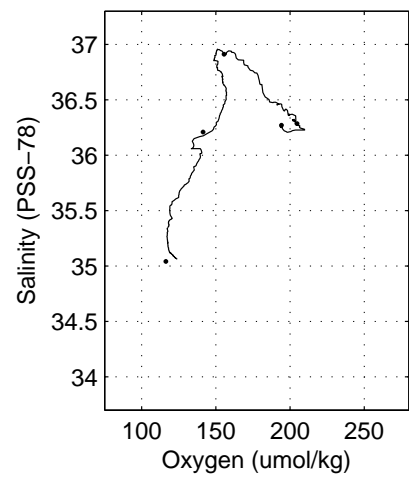
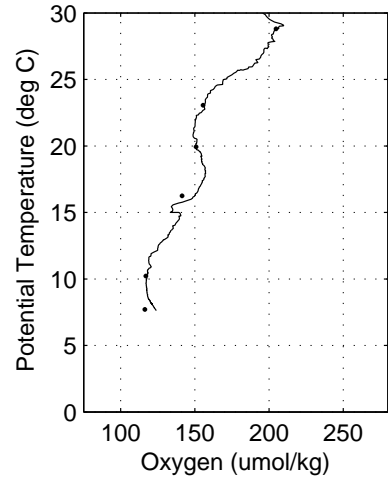
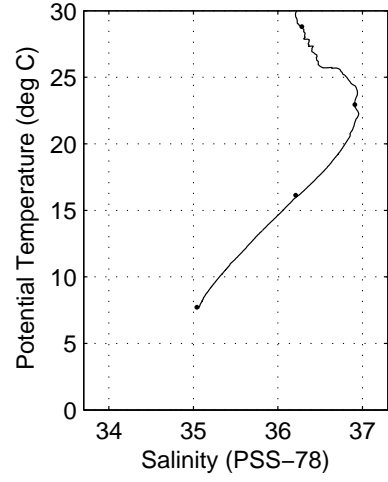
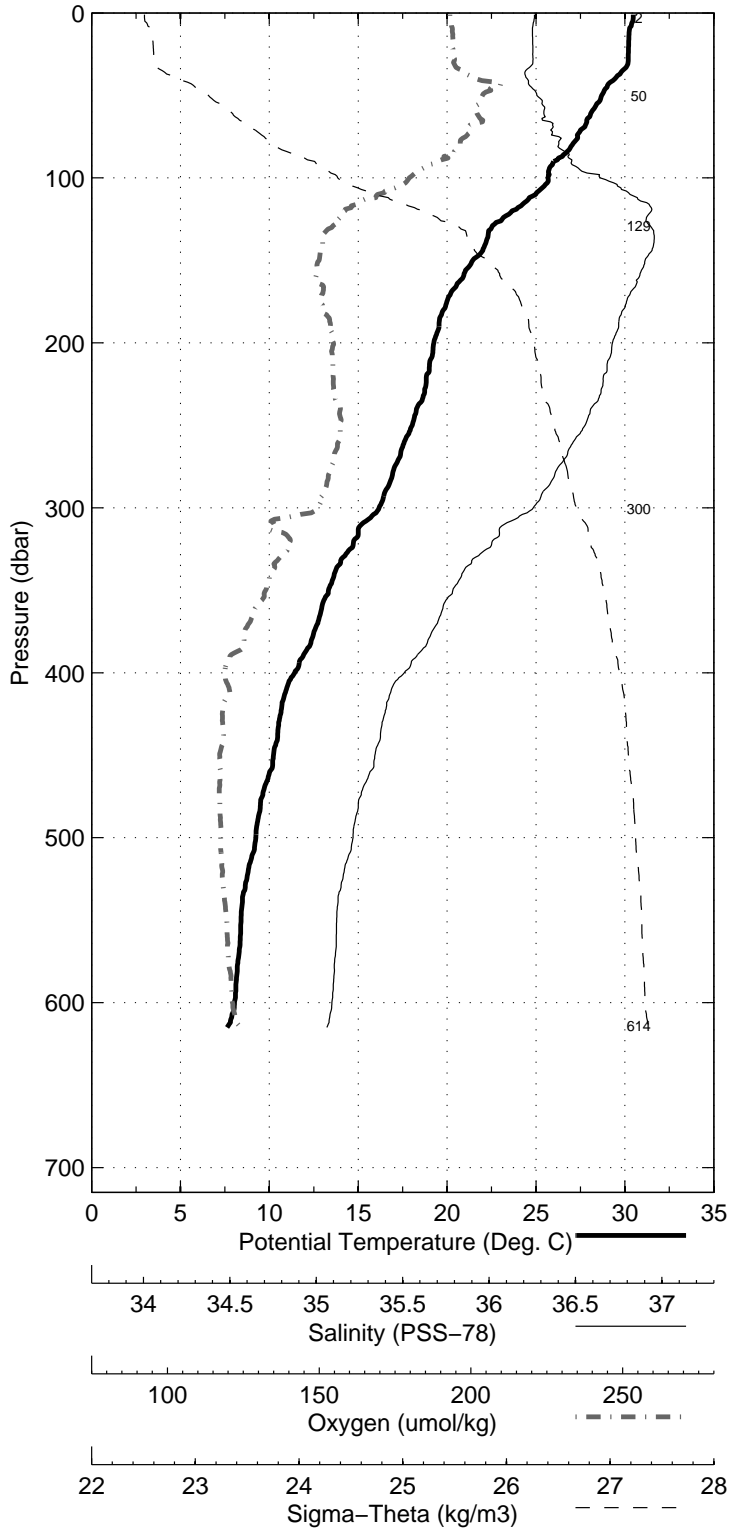


Figure 23: WS0621



Florida Straits R/V FG Walton Smith  
 CTD Station 5 (CTD005)  
 Latitude 27.003 N Longitude 79.501 W  
 18-Sep-2006 19:20 Z

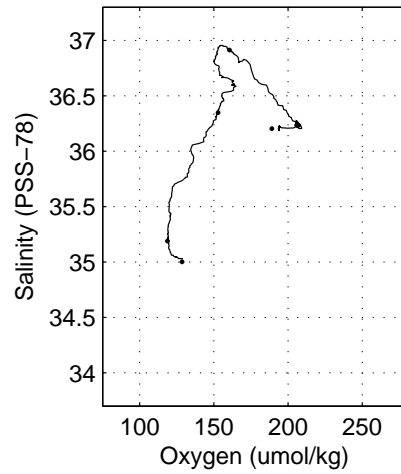
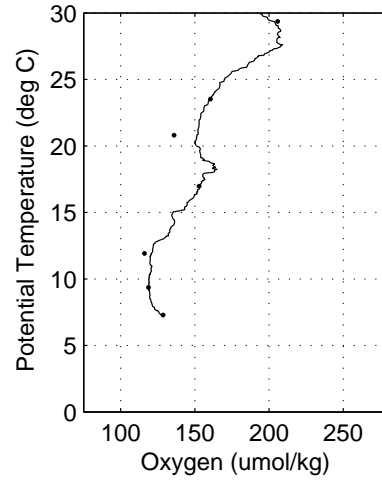
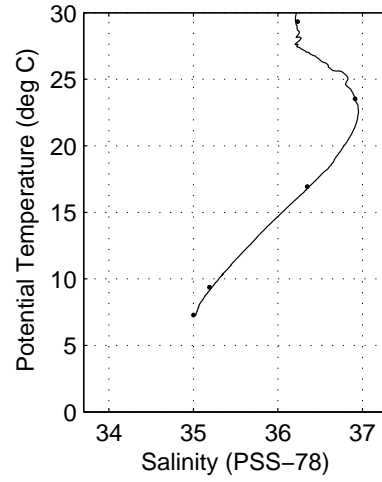
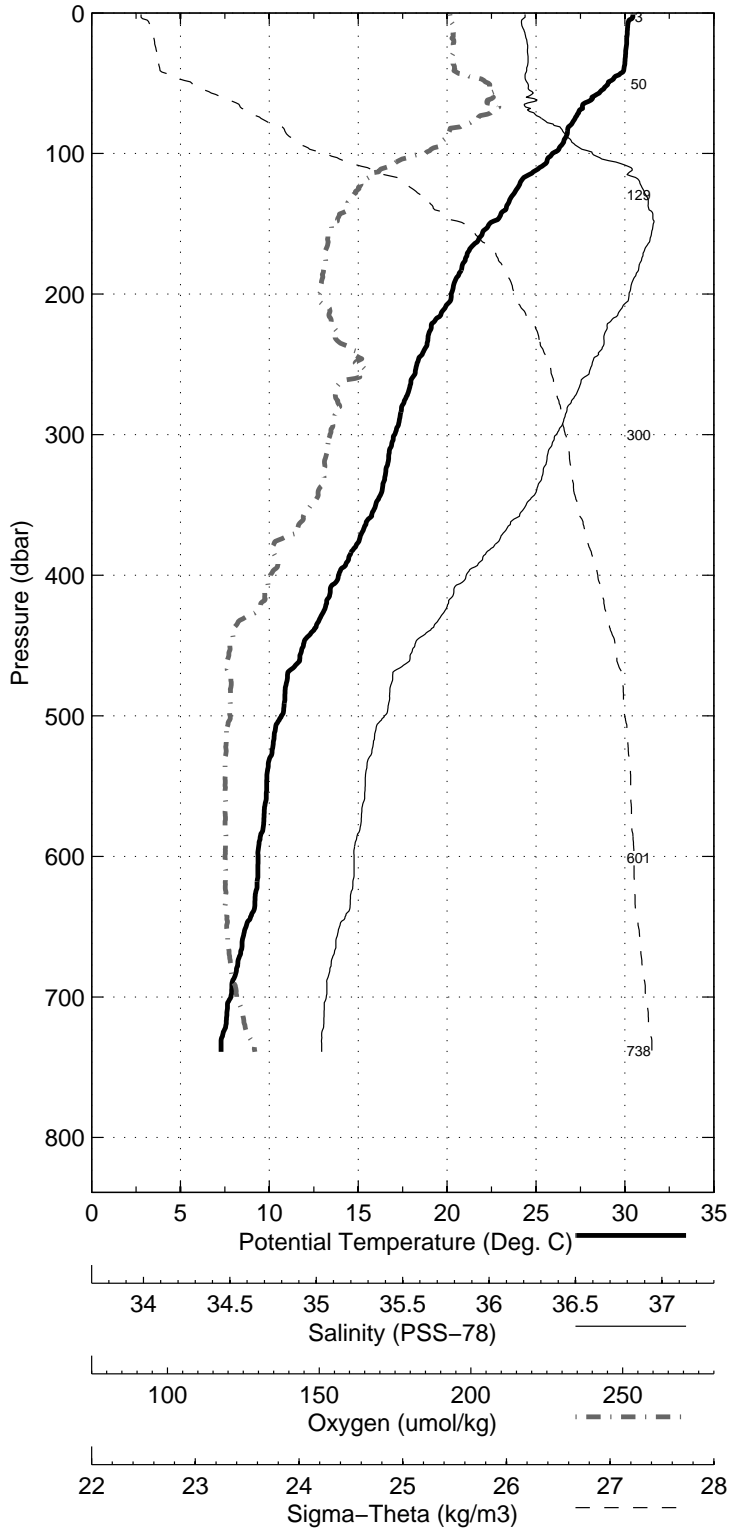


Figure 24: WS0621

Florida Straits R/V FG Walton Smith  
 CTD Station 6 (CTD006)  
 Latitude 27.002 N Longitude 79.384 W  
 18-Sep-2006 17:55 Z

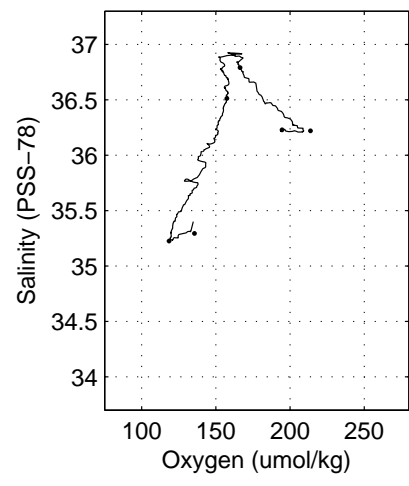
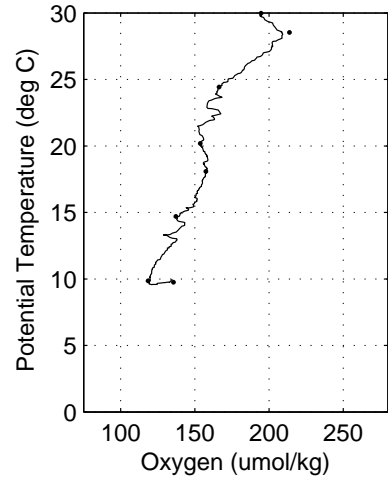
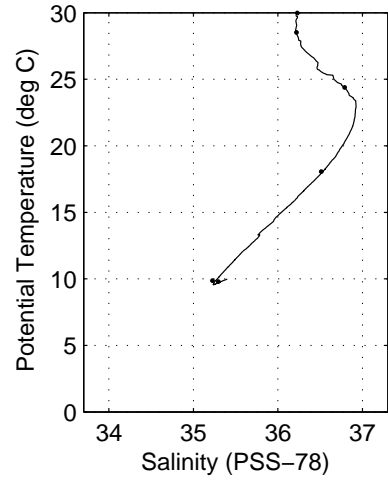
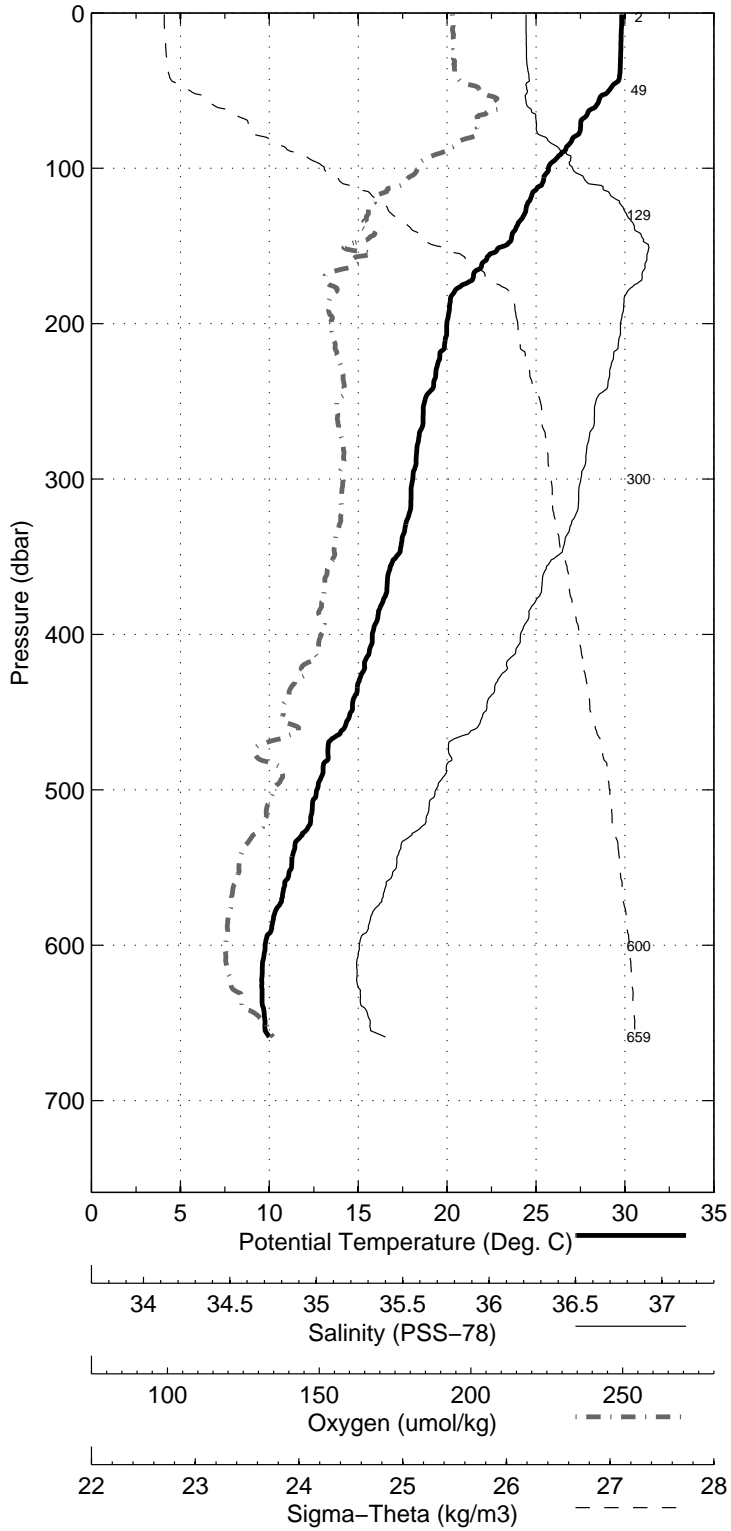


Figure 25: WS0621

Florida Straits R/V FG Walton Smith  
 CTD Station 7 (CTD007)  
 Latitude 27.001 N Longitude 79.284 W  
 18-Sep-2006 16:09 Z

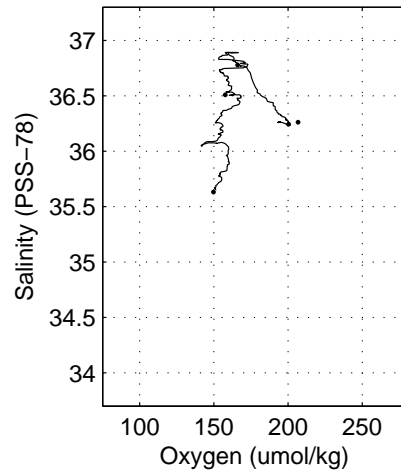
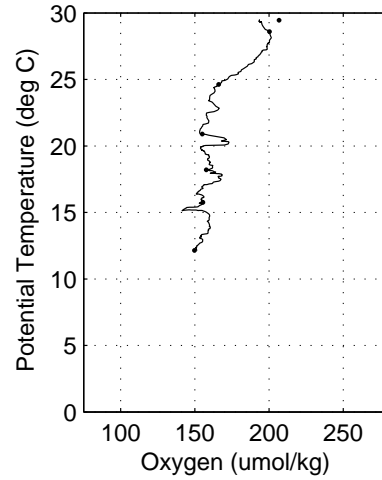
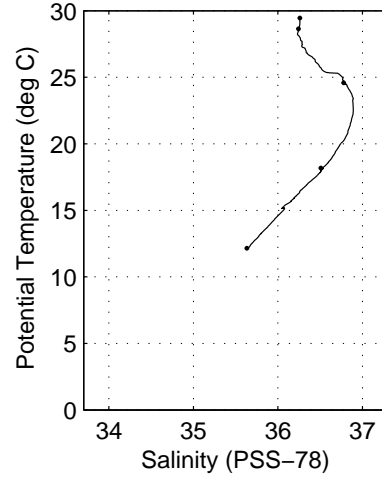
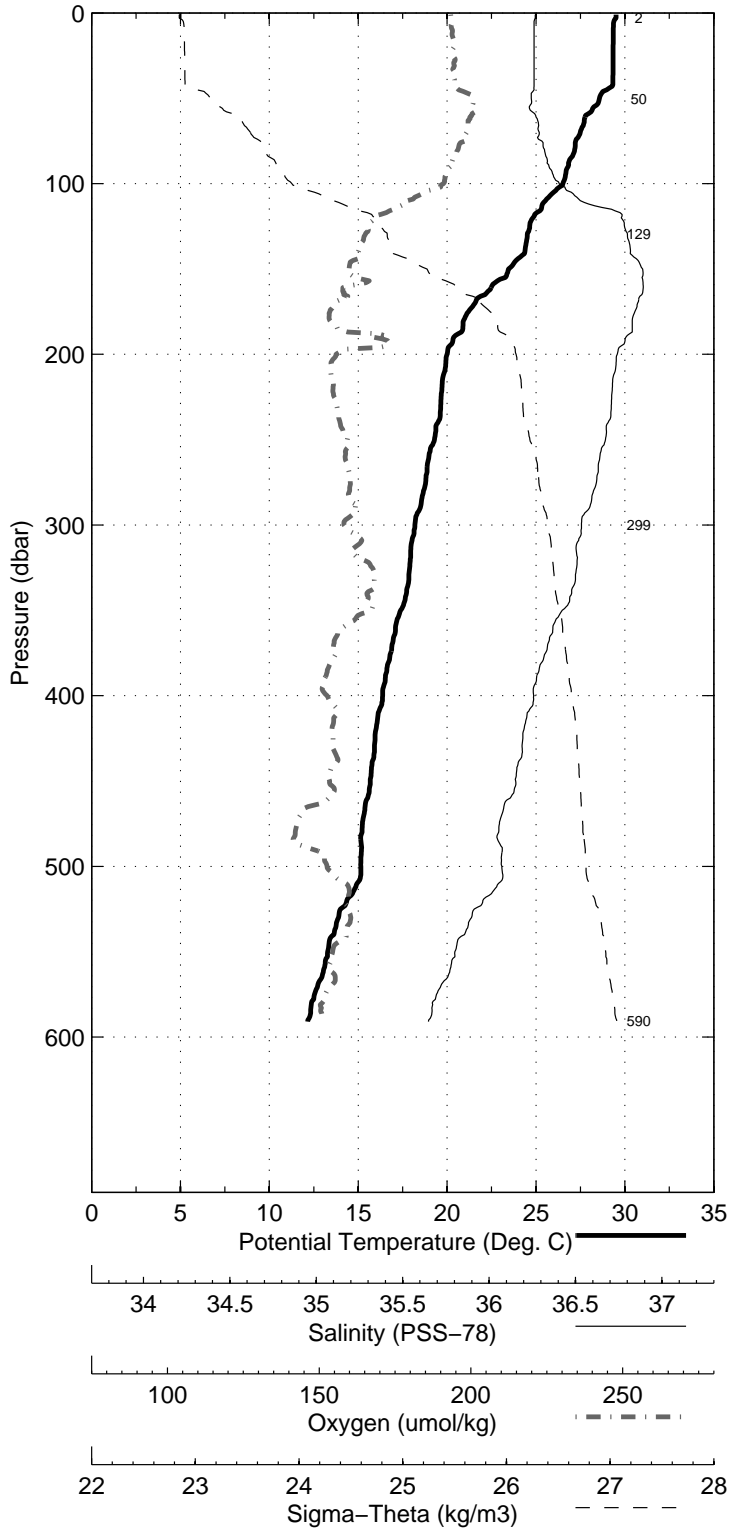


Figure 26: WS0621

Florida Straits R/V FG Walton Smith  
 CTD Station 8 (CTD008)  
 Latitude 27.000 N Longitude 79.201 W  
 18-Sep-2006 14:37 Z

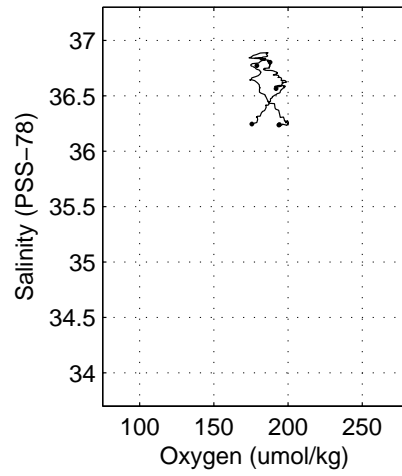
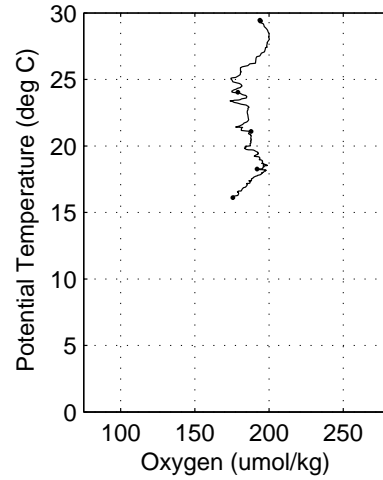
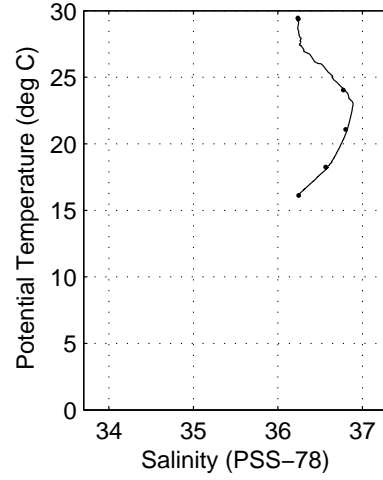
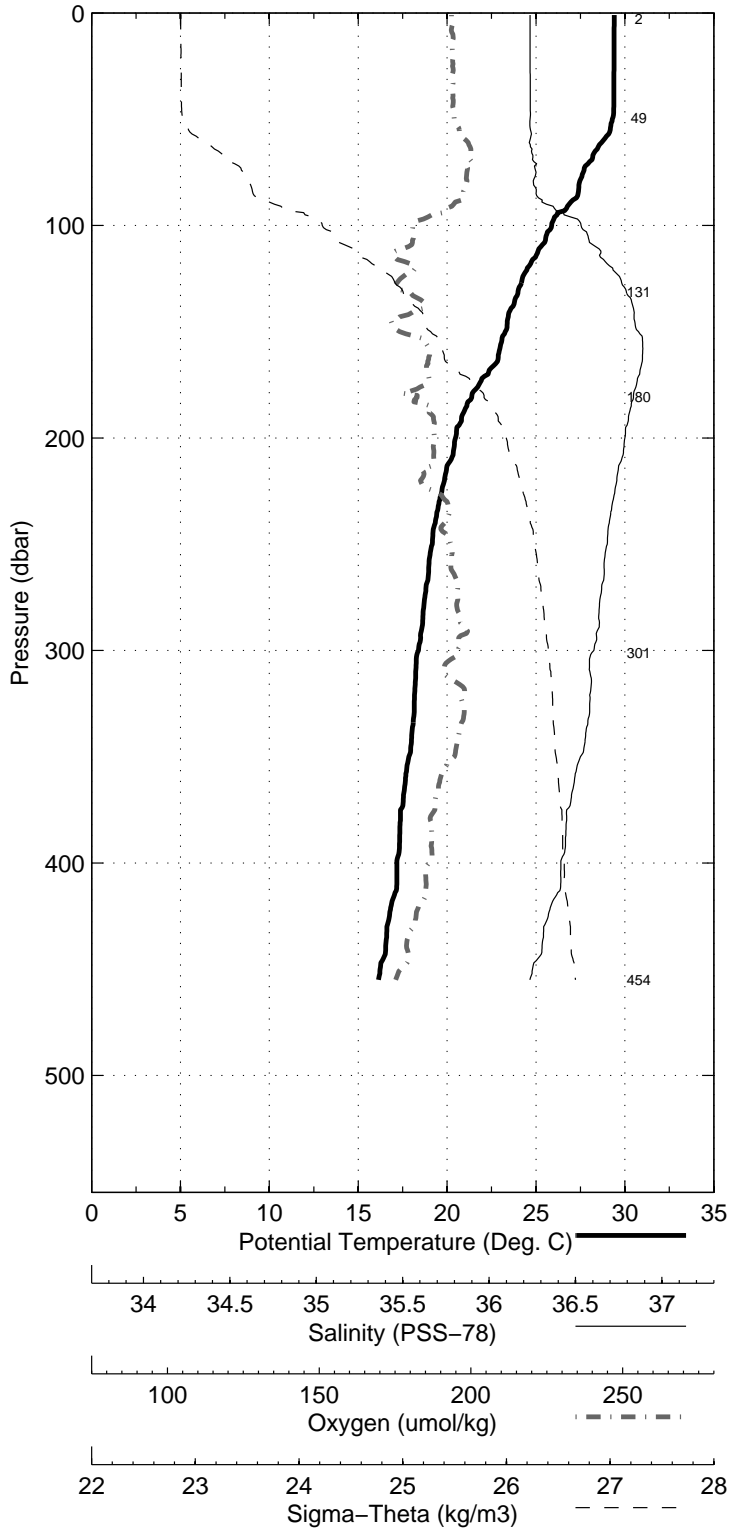


Figure 27: WS0621