

**Straits of Florida: CTD data calibration report**  
**NOAA/AOML: Western Boundary Time Series program**

**Cruise ID: WS0604**

**Cruise date: June, 2006**

**Rigoberto F. Garcia**

**Carlos A. Fonseca**

**Christopher S. Meinen**

**Molly O. Baringer**

September 16, 2008

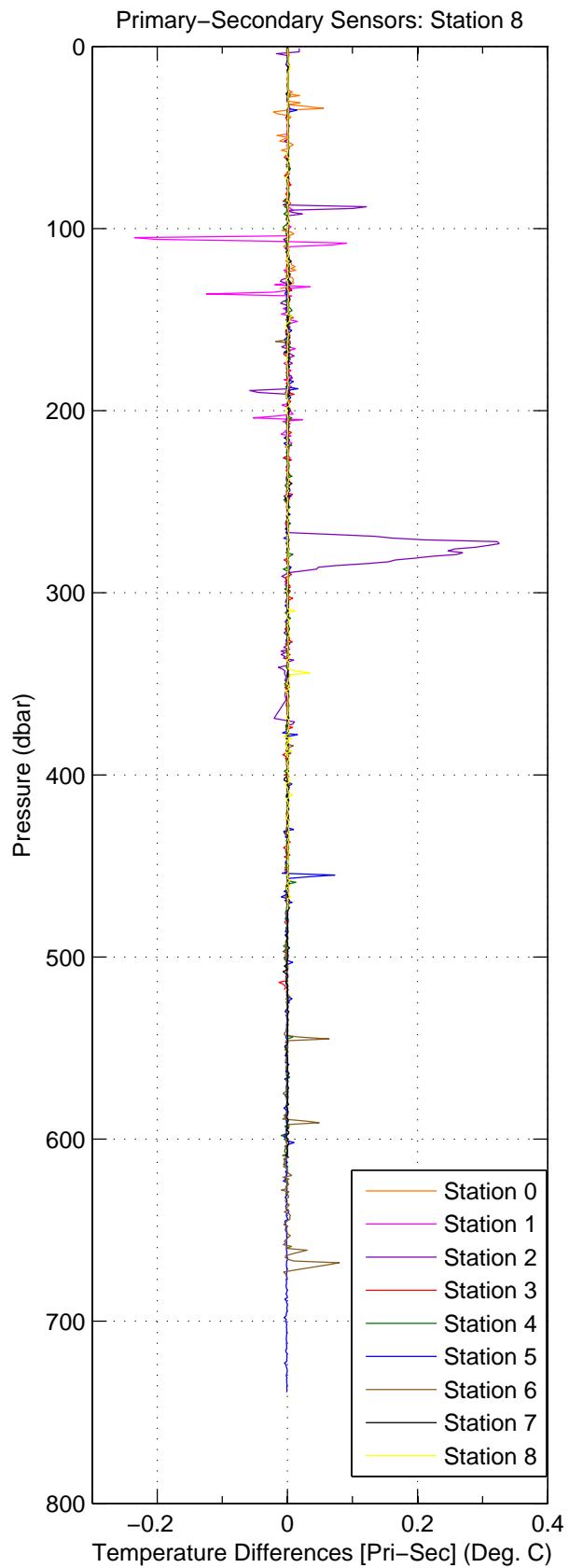
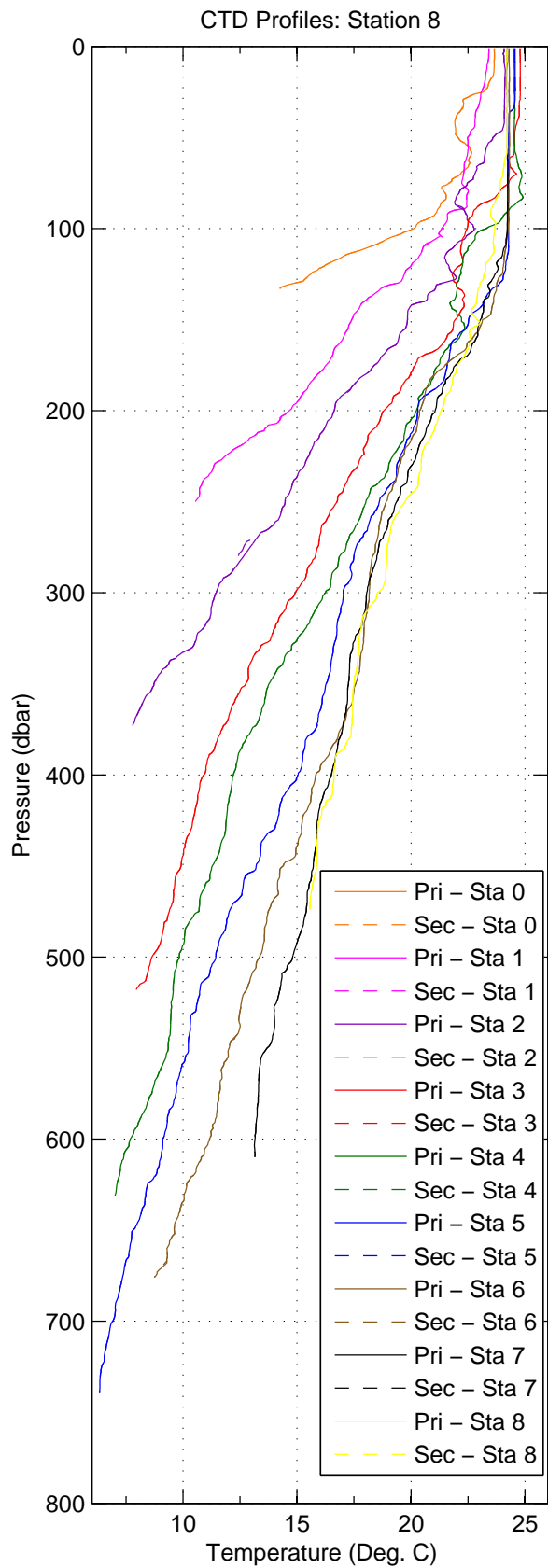


Figure 1: WS0604

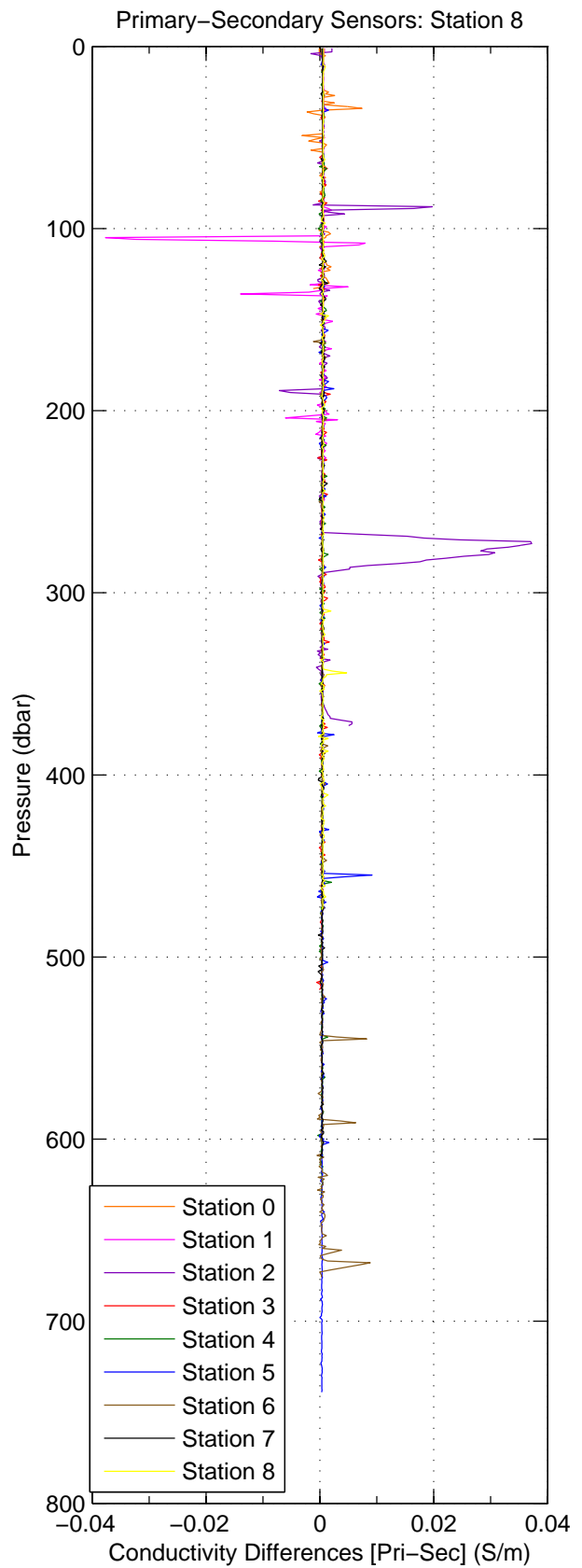
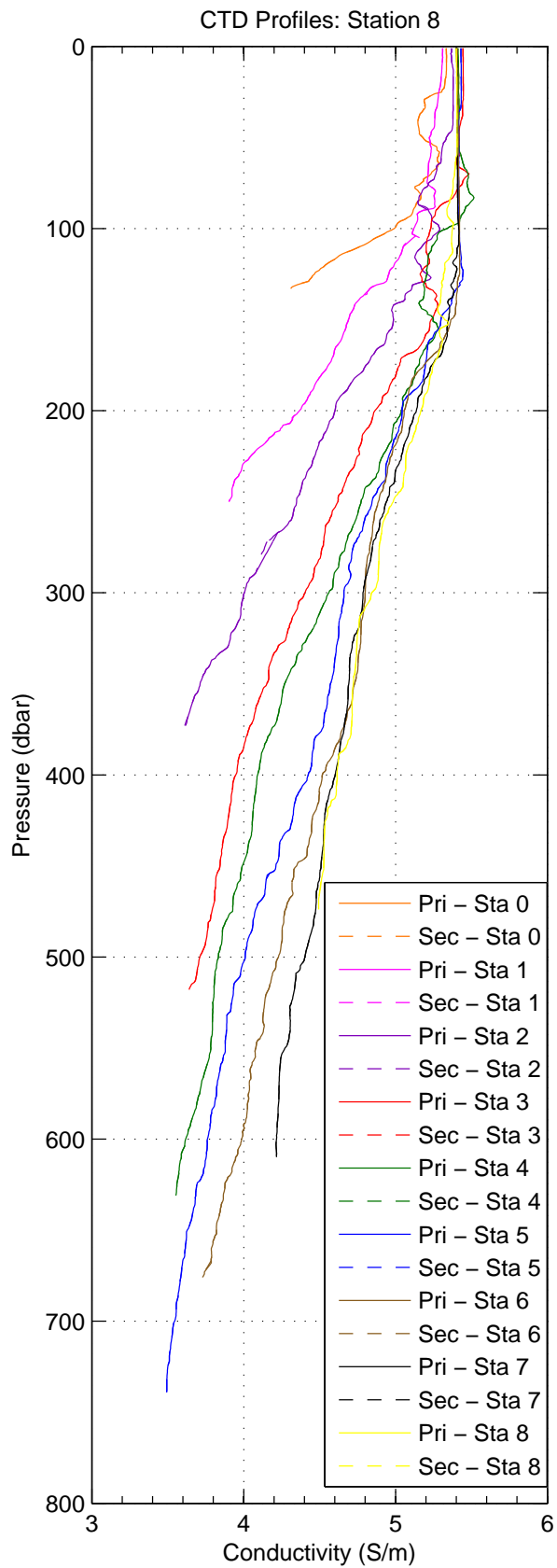


Figure 2: WS0604

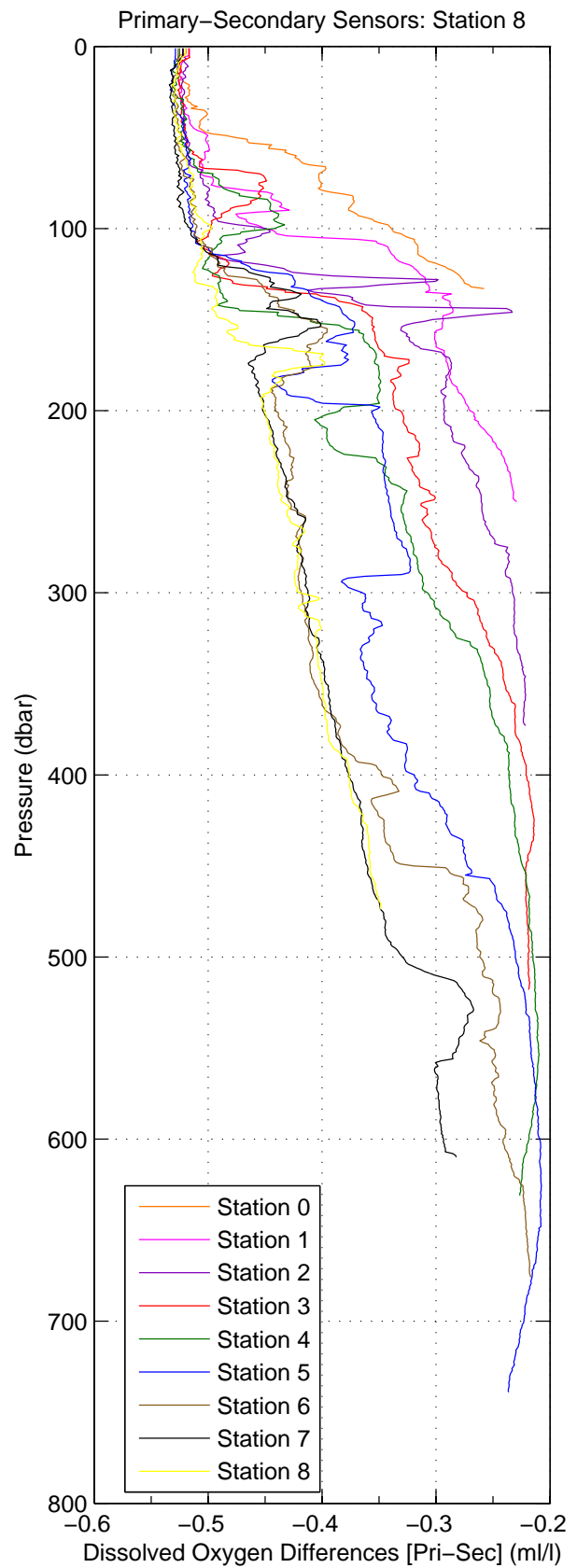
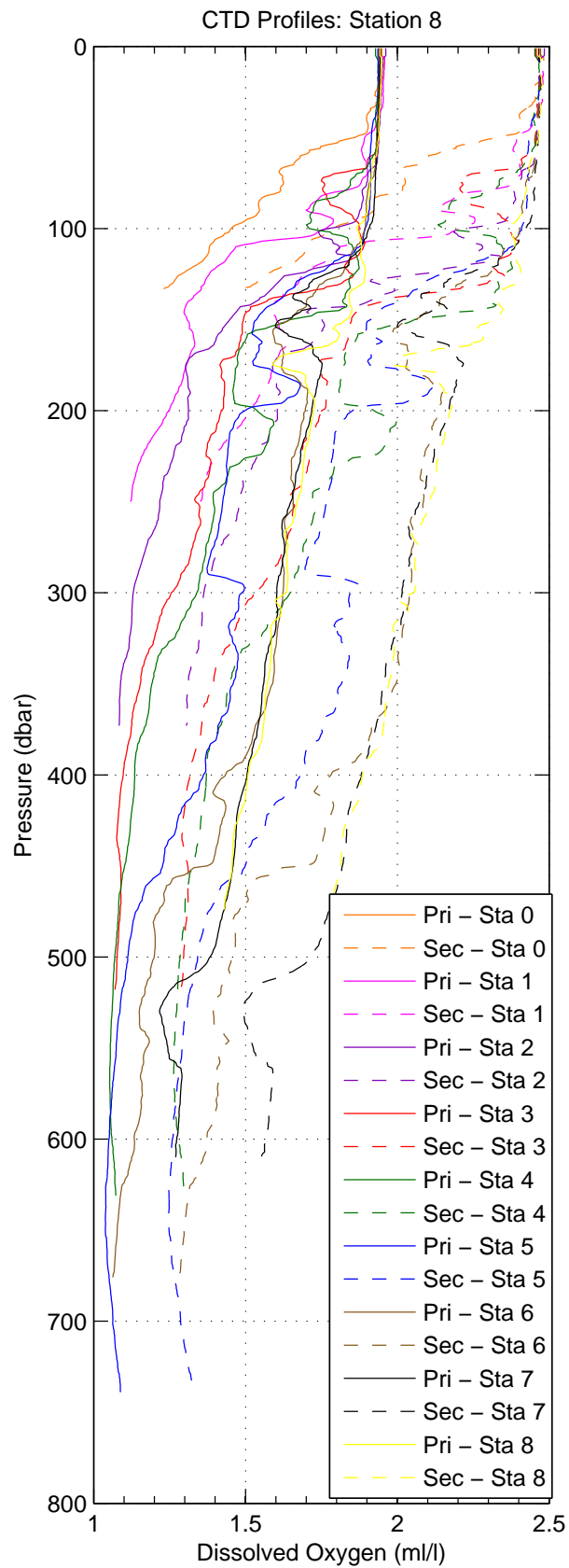


Figure 3: WS0604

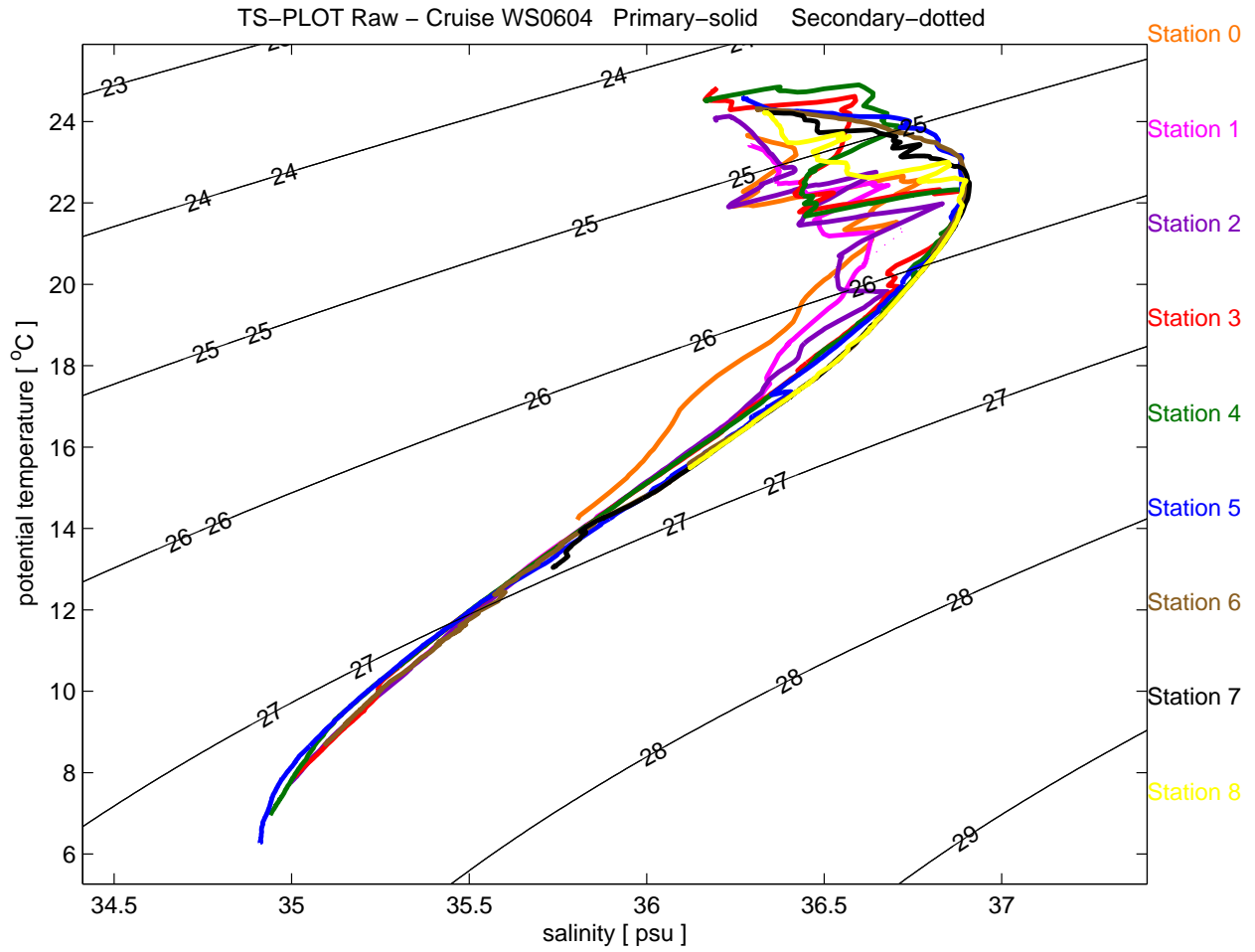


Figure 4: WS0604

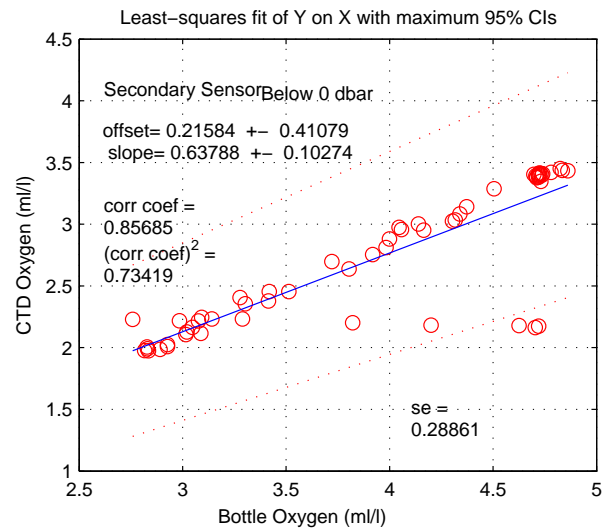
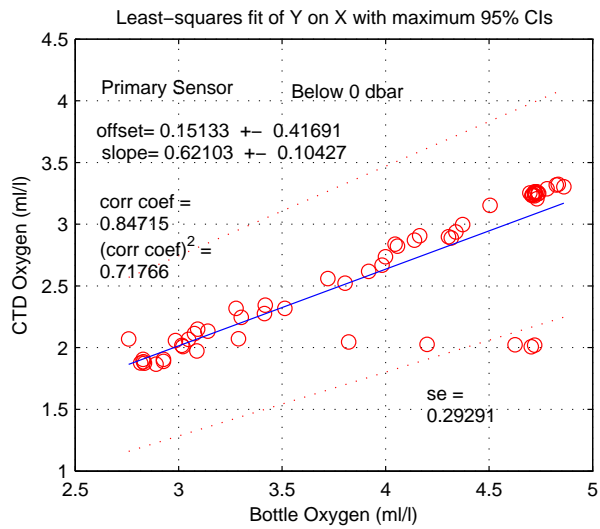
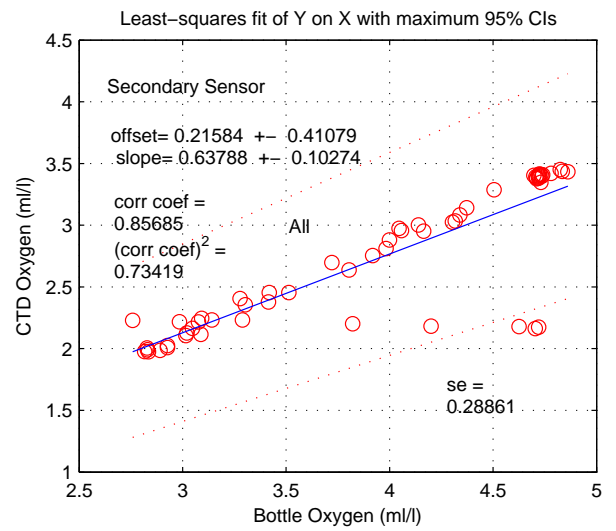
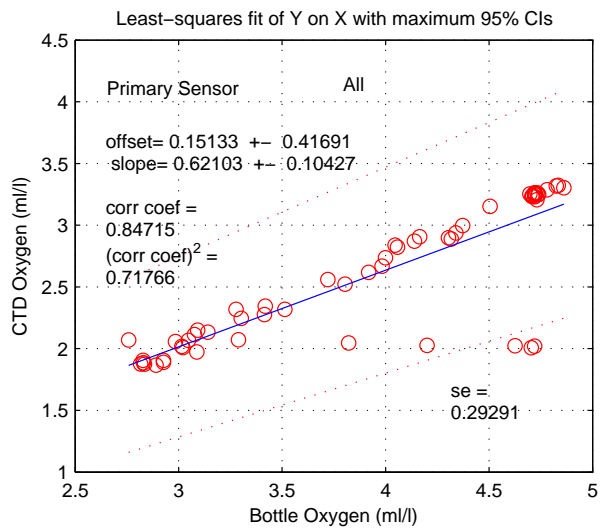
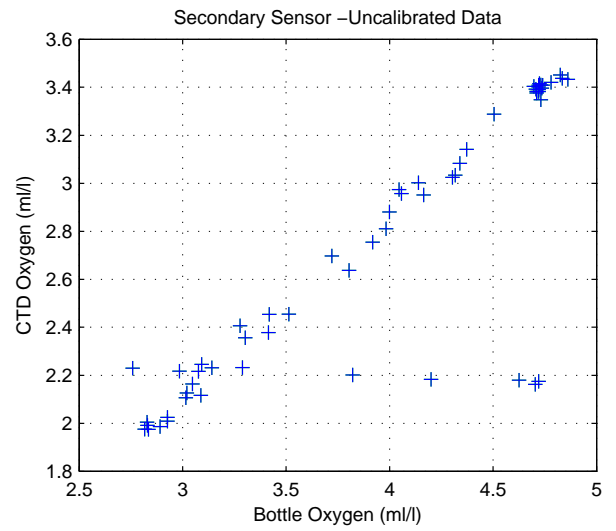
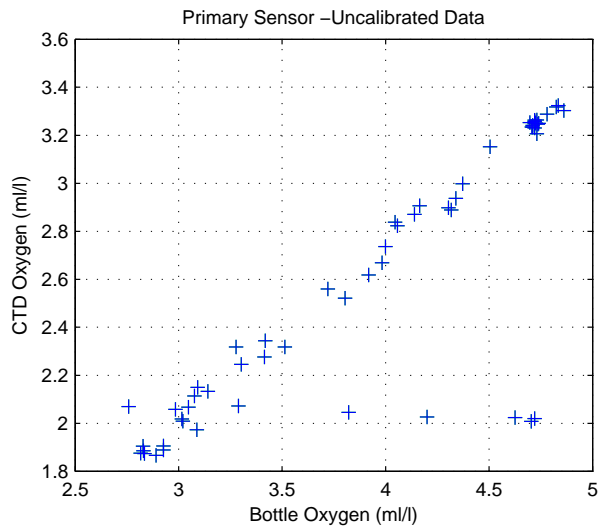


Figure 5: WS0604

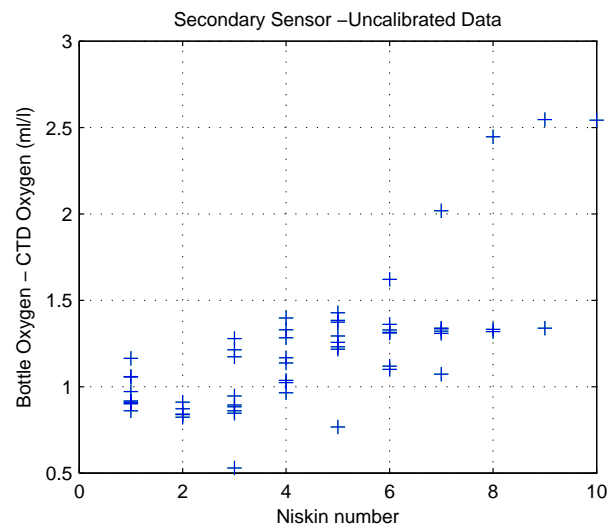
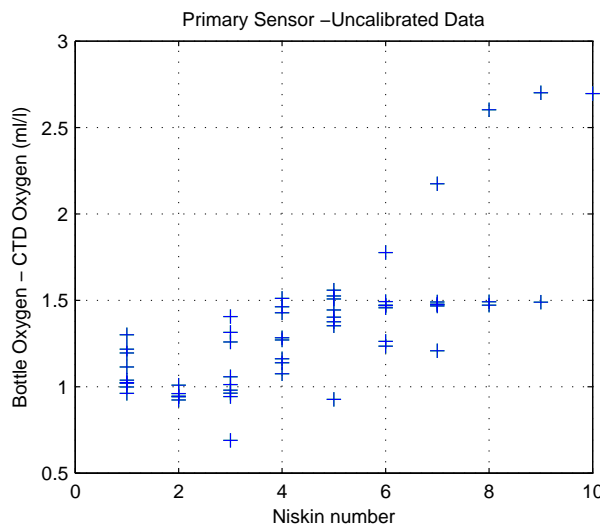
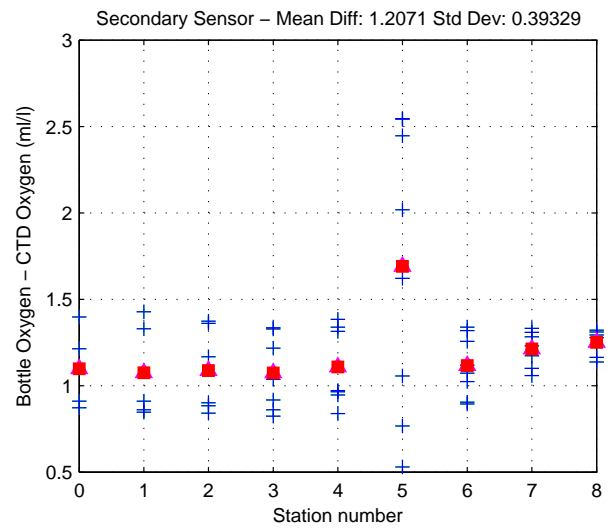
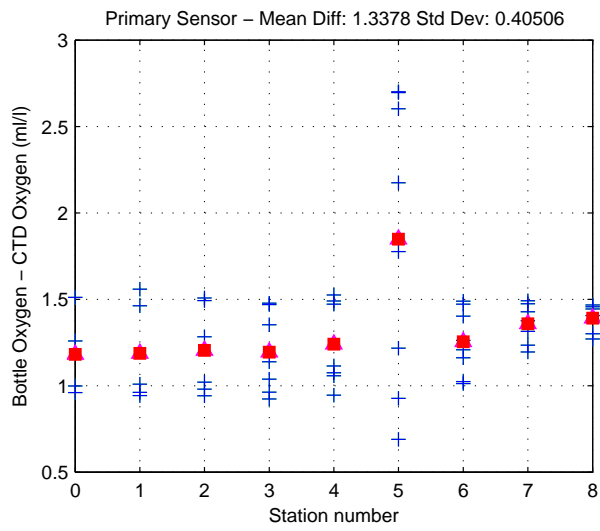
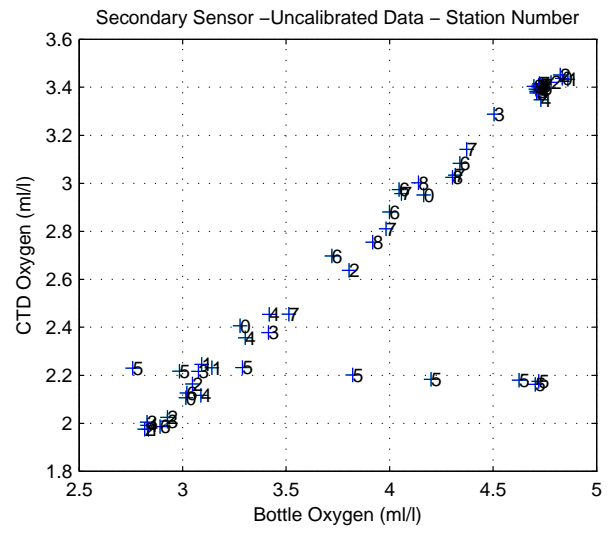
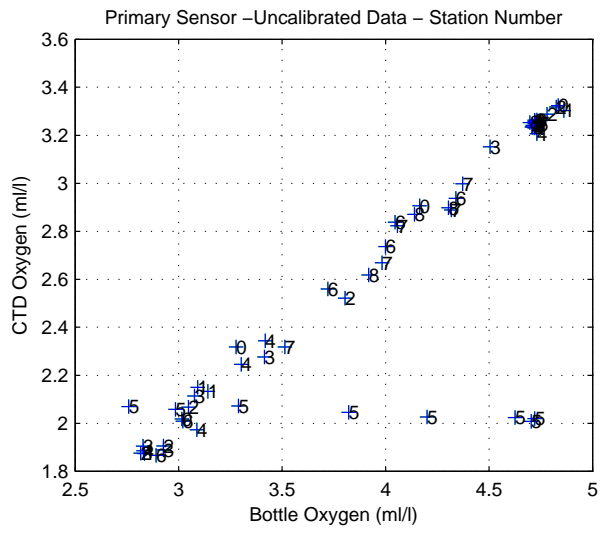


Figure 6: WS0604

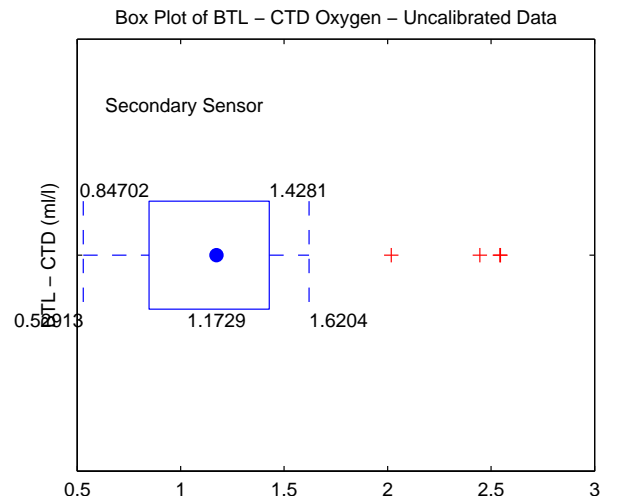
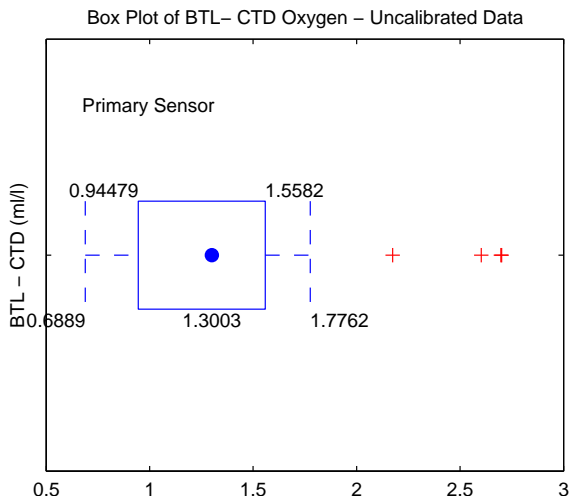
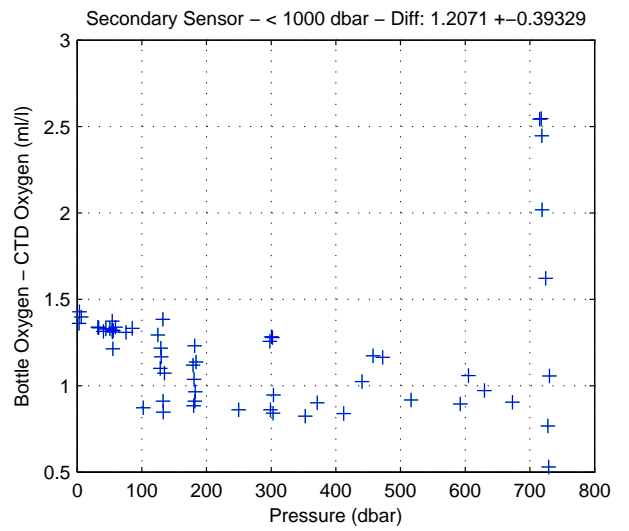
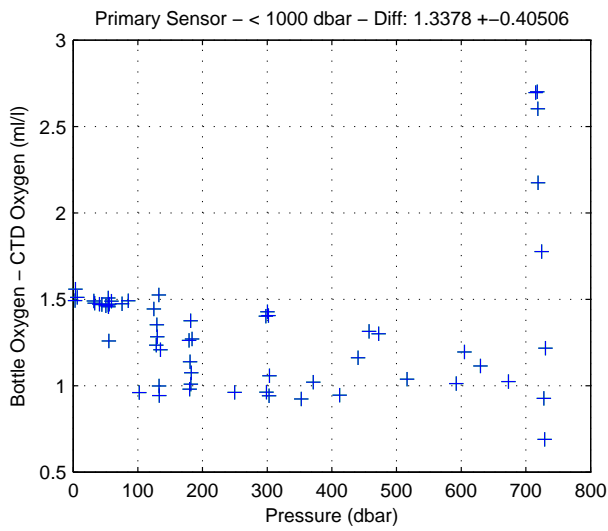
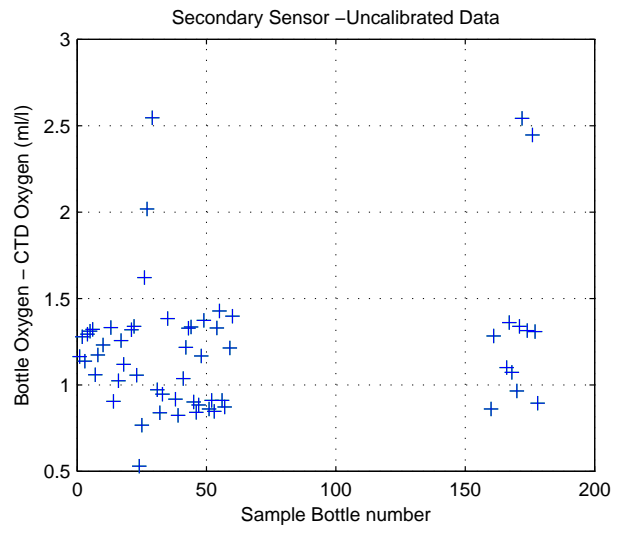
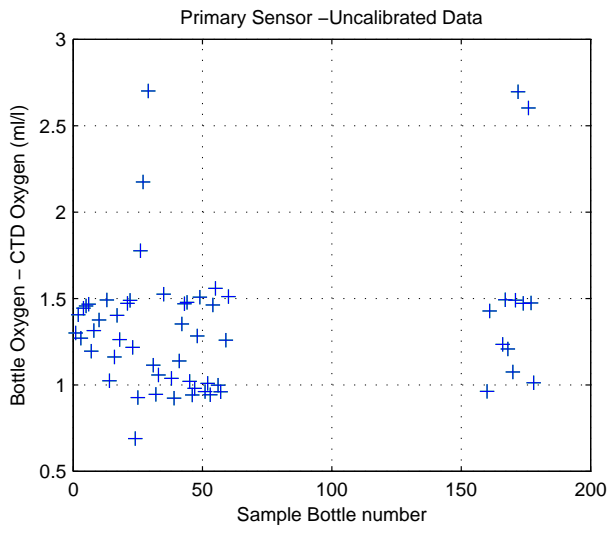
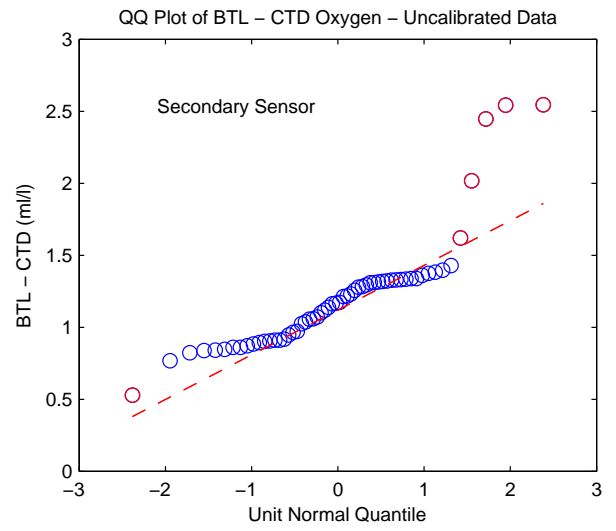
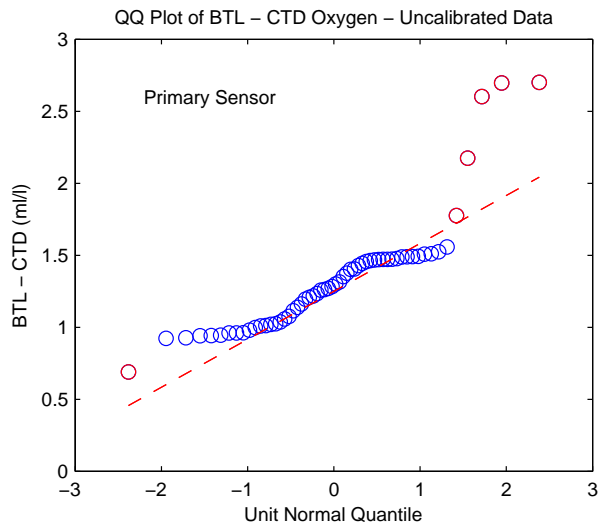
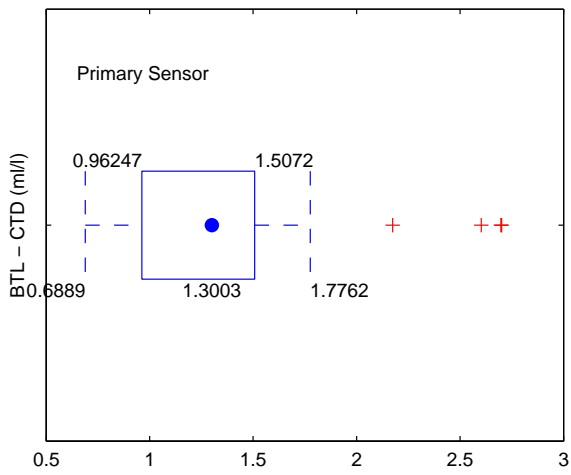


Figure 7: WS0604

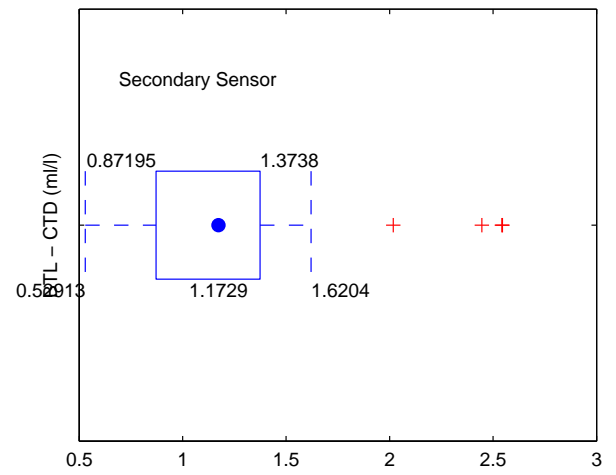




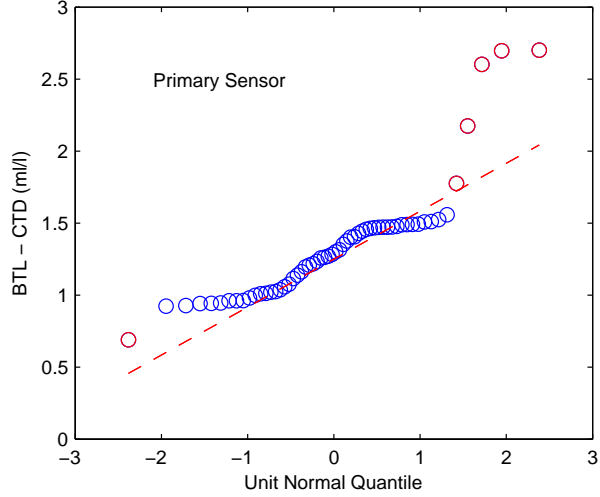
Box Plot of BTL – CTD Oxygen – Uncalibrated Data – Below 0 dbar



Box Plot of BTL – CTD Oxygen – Uncalibrated Data – Below 0 dbar



QQ Plot of BTL – CTD Oxygen – Uncalibrated Data – Below 0 dbar



QQ Plot of BTL – CTD Oxygen – Uncalibrated Data – Below 0 dbar

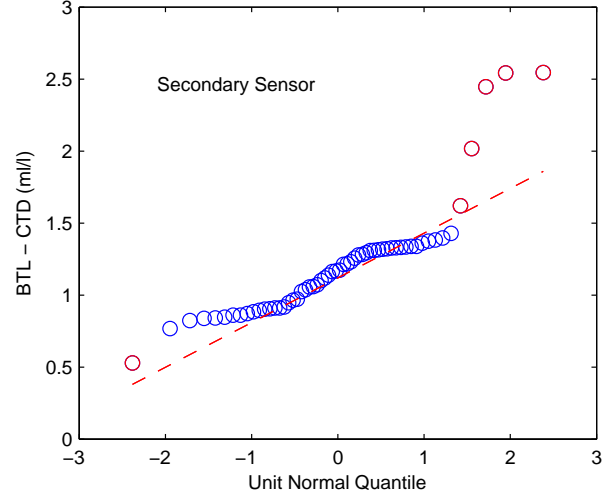


Figure 8: WS0604

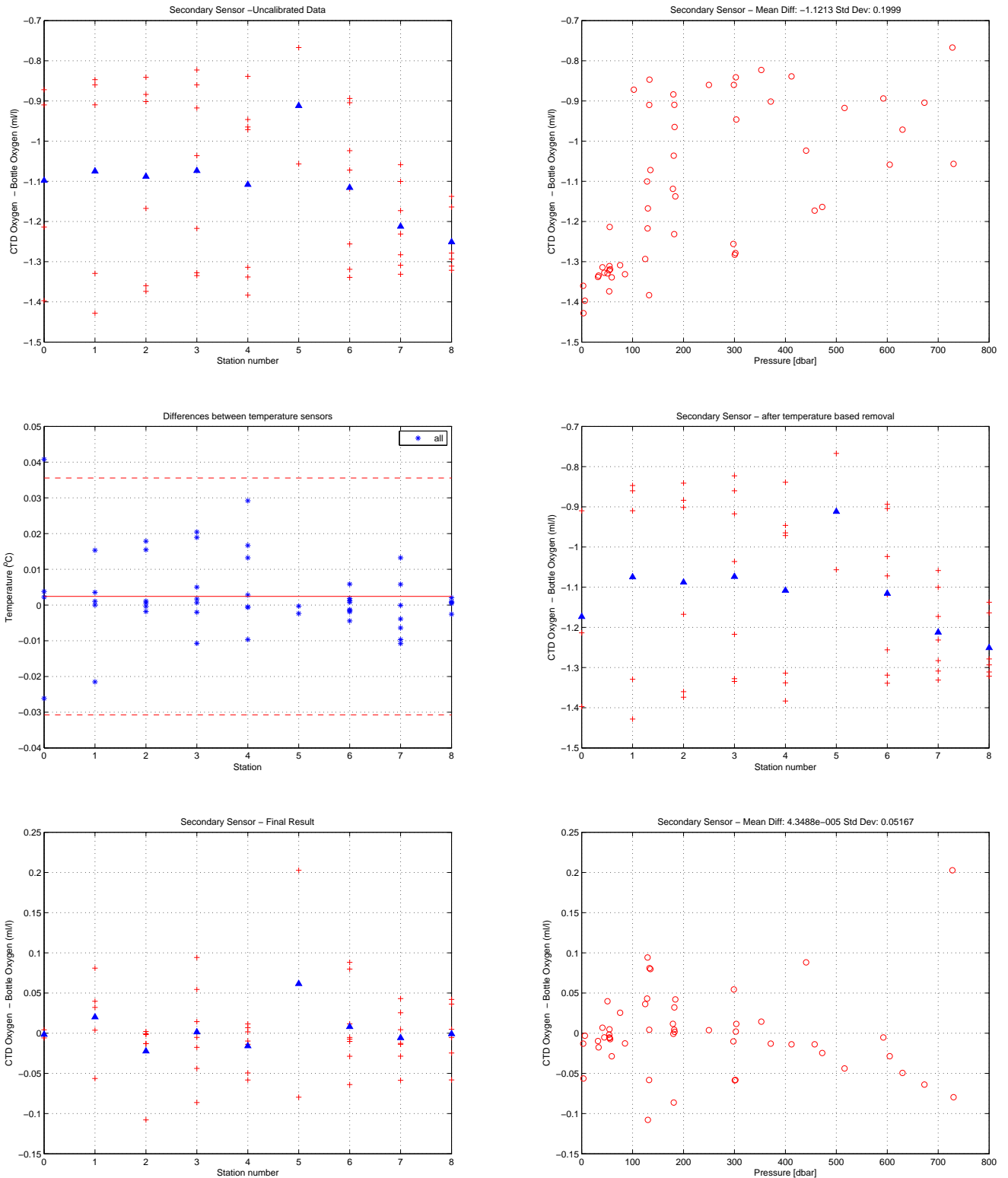


Figure 9: WS0604. Oxygen Calibration

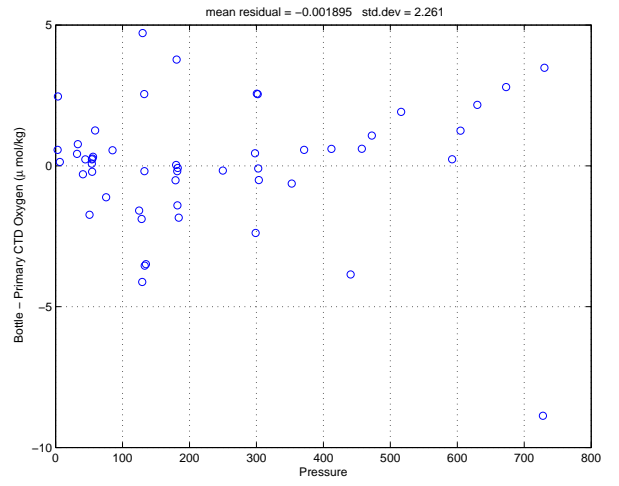
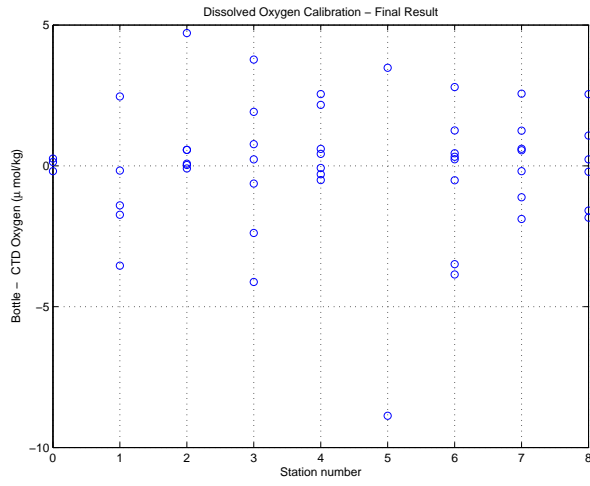


Figure 10: WS0604. Oxygen Calibration (cont.)

Florida Straits R/V FG Walton Smith  
 CTD Station 0 (CTD000)  
 Latitude 27.005 N Longitude 79.930 W  
 30-Jan-2006 21:34 Z

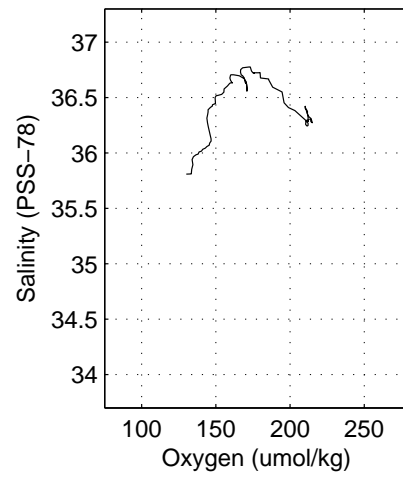
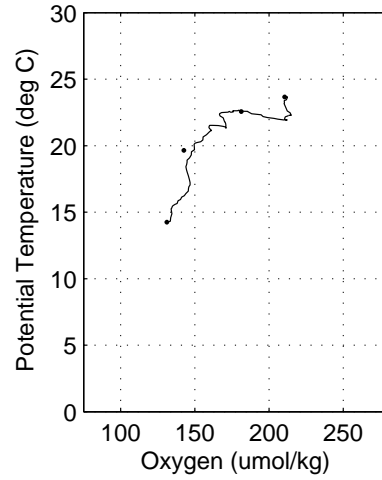
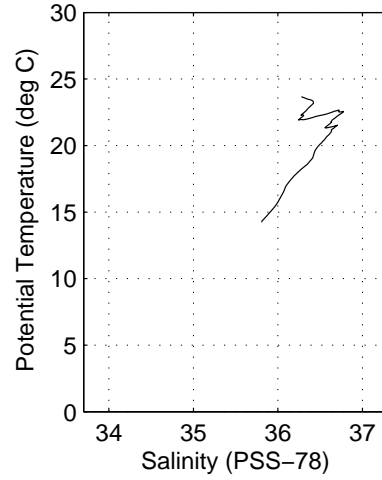
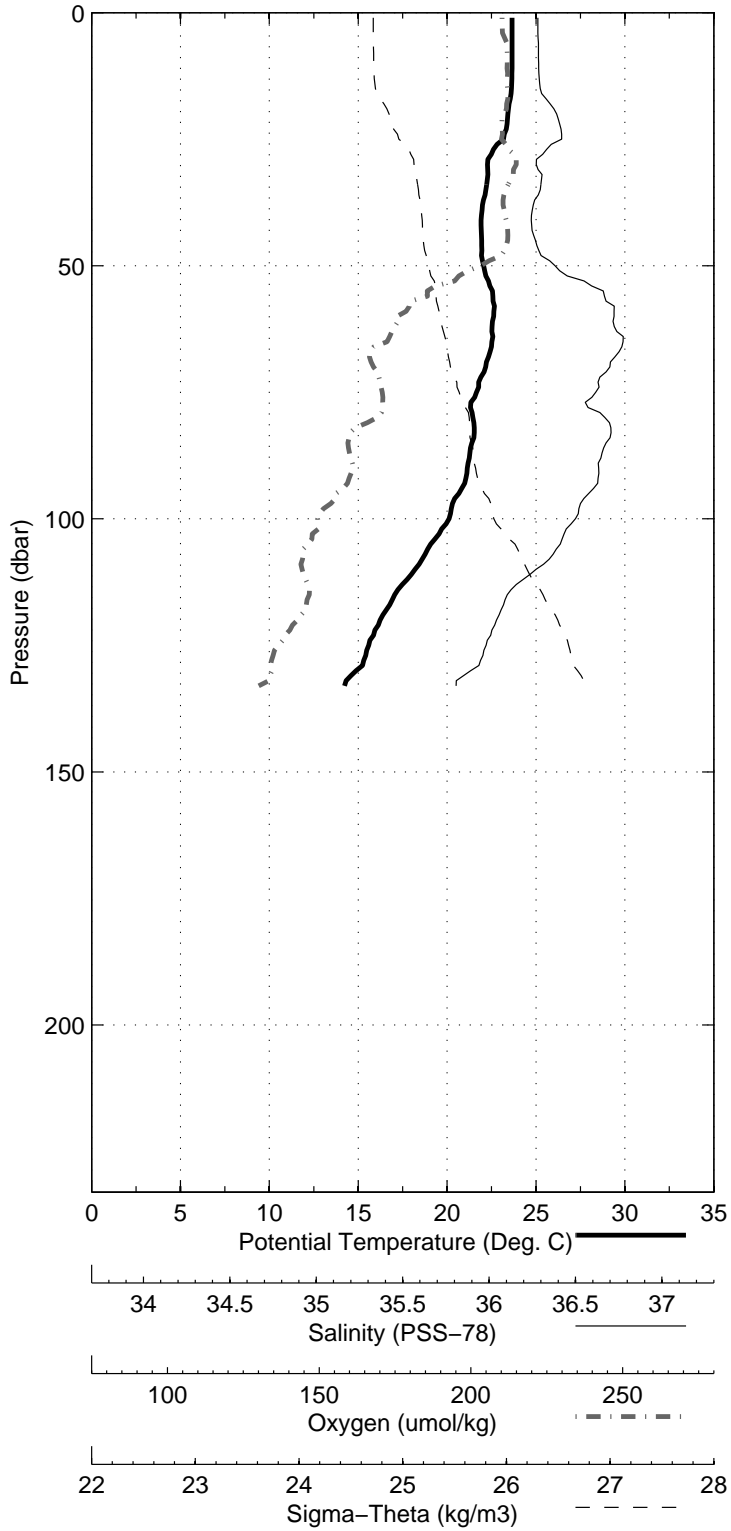


Figure 11: WS0604

Florida Straits R/V FG Walton Smith  
CTD Station 1 (CTD001)  
Latitude 27.001 N Longitude 79.866 W  
30-Jan-2006 20:16 Z

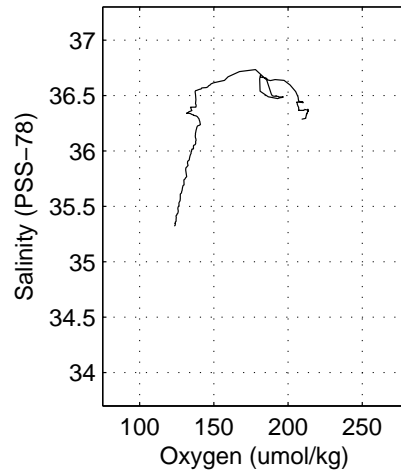
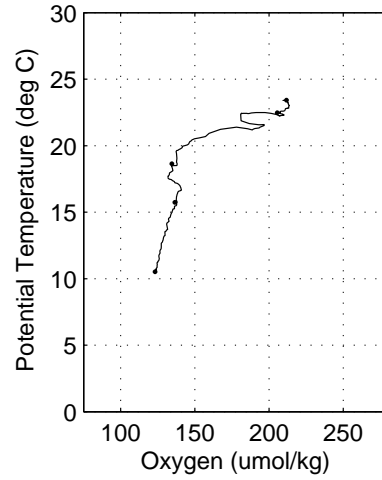
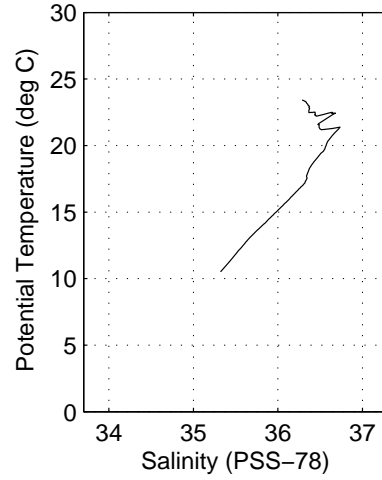
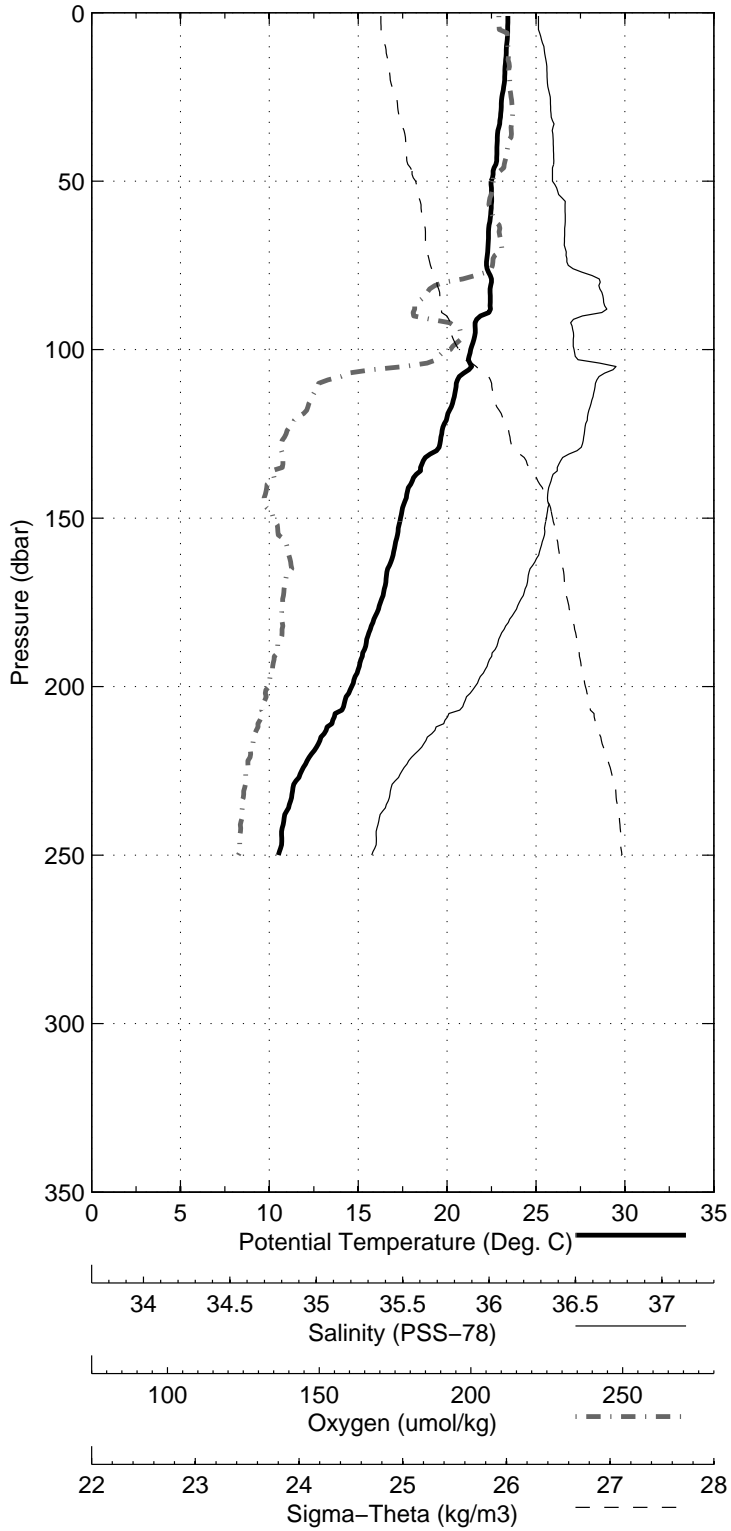


Figure 12: WS0604

Florida Straits R/V FG Walton Smith  
 CTD Station 2 (CTD002)  
 Latitude 27.004 N Longitude 79.783 W  
 30-Jan-2006 18:09 Z

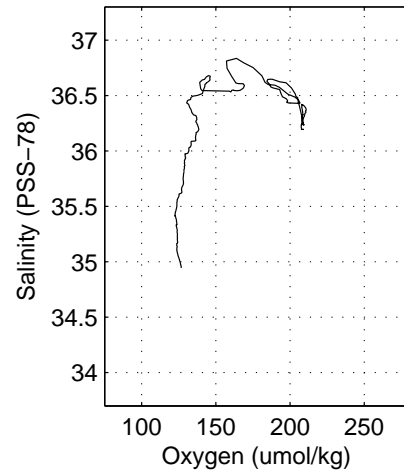
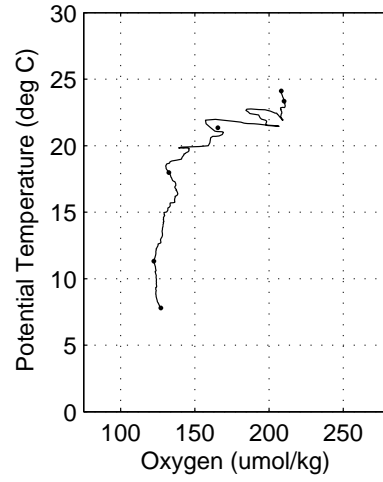
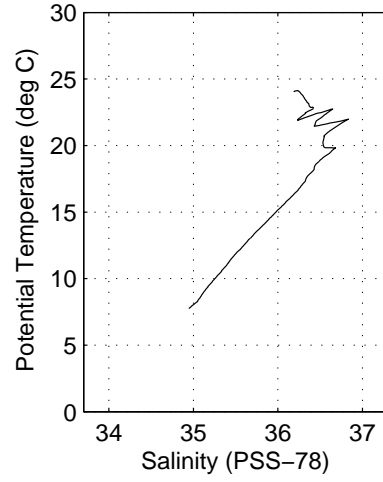
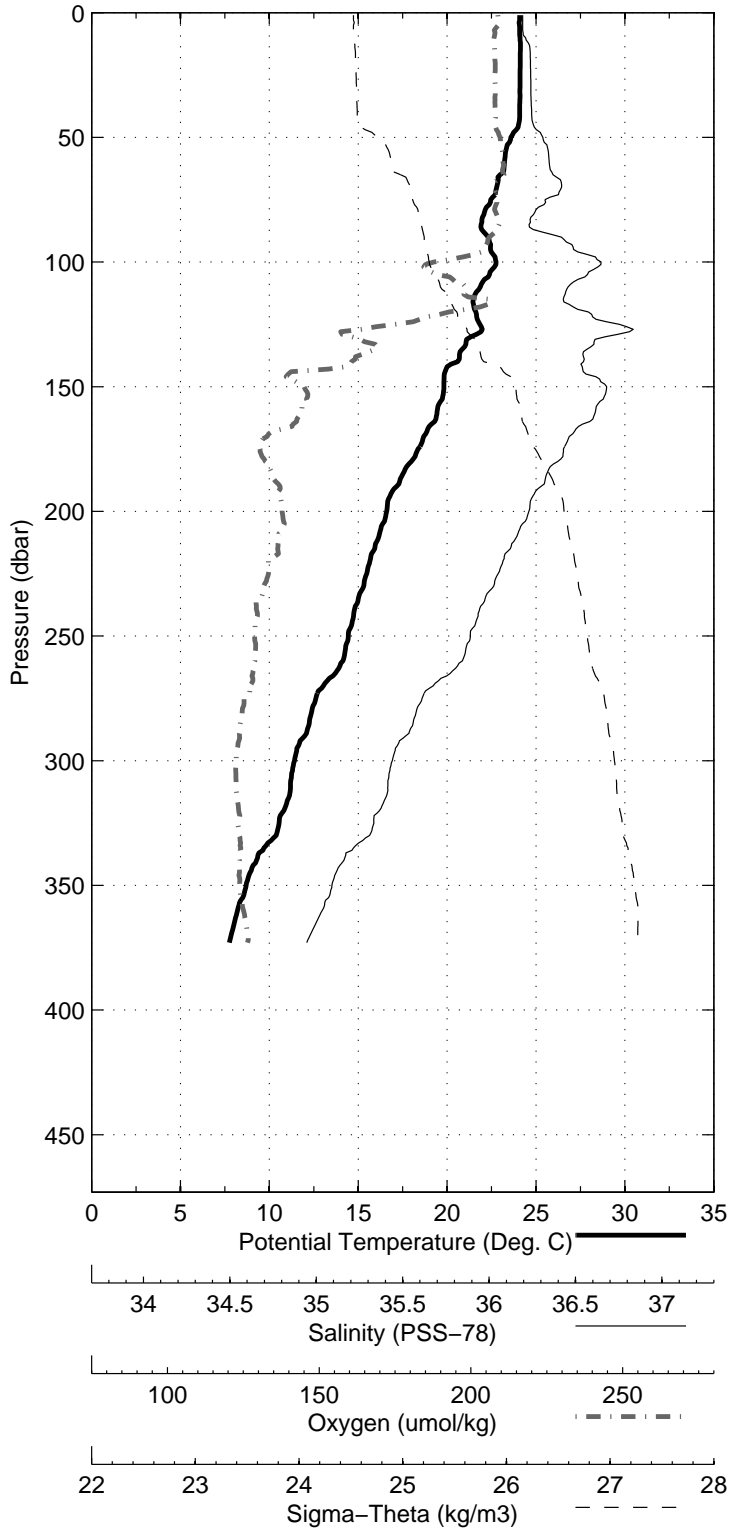


Figure 13: WS0604

Florida Straits R/V FG Walton Smith  
 CTD Station 3 (CTD003)  
 Latitude 27.006 N Longitude 79.683 W  
 30-Jan-2006 15:34 Z

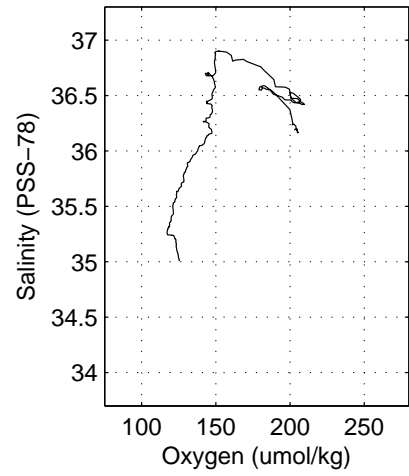
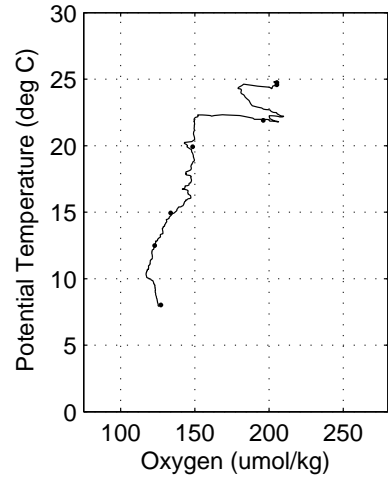
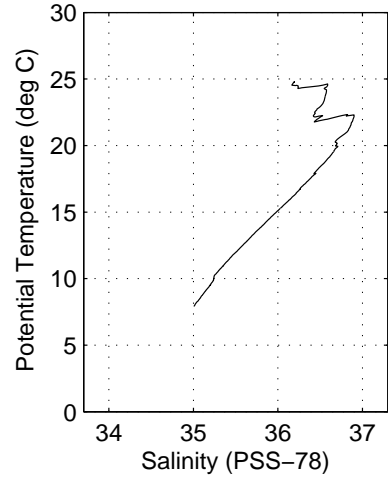
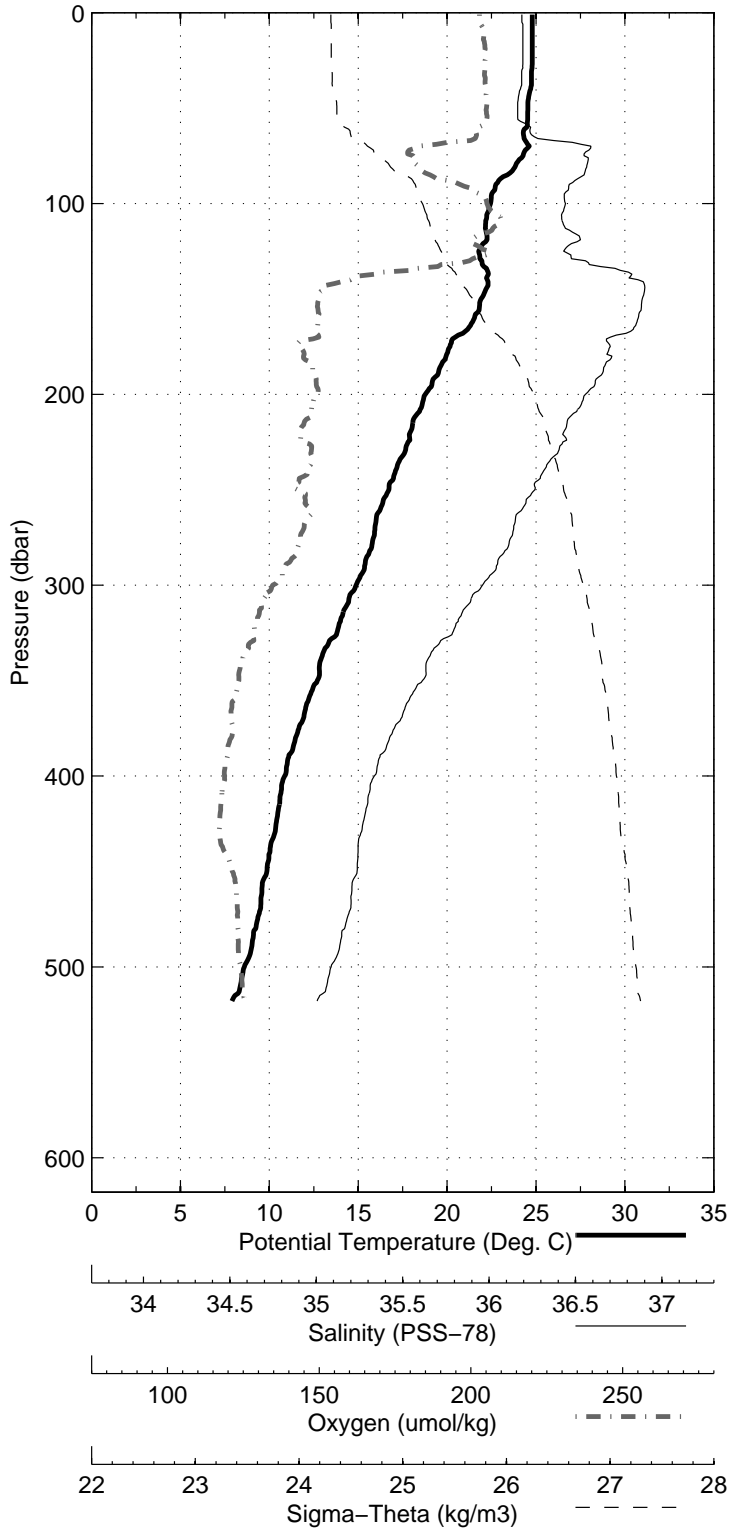


Figure 14: WS0604

Florida Straits R/V FG Walton Smith  
CTD Station 4 (CTD004)  
Latitude 27.007 N Longitude 79.617 W  
30-Jan-2006 12:52 Z

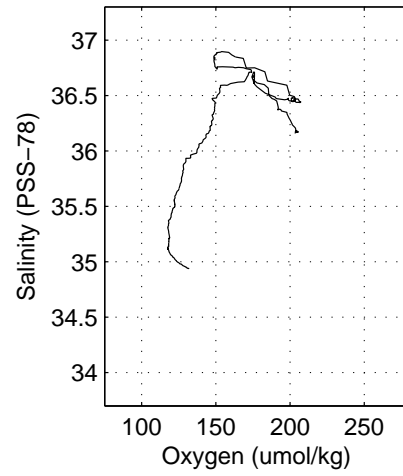
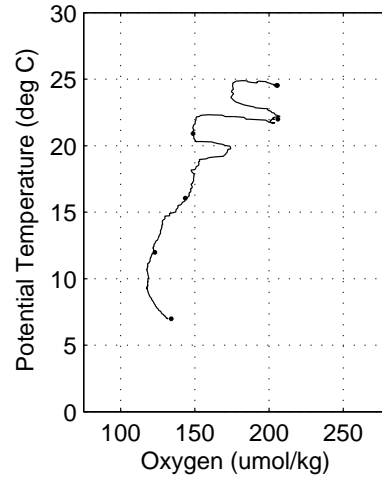
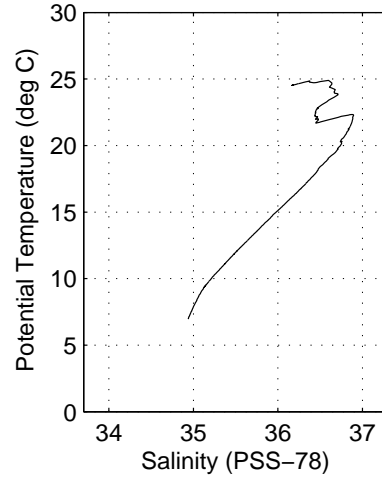
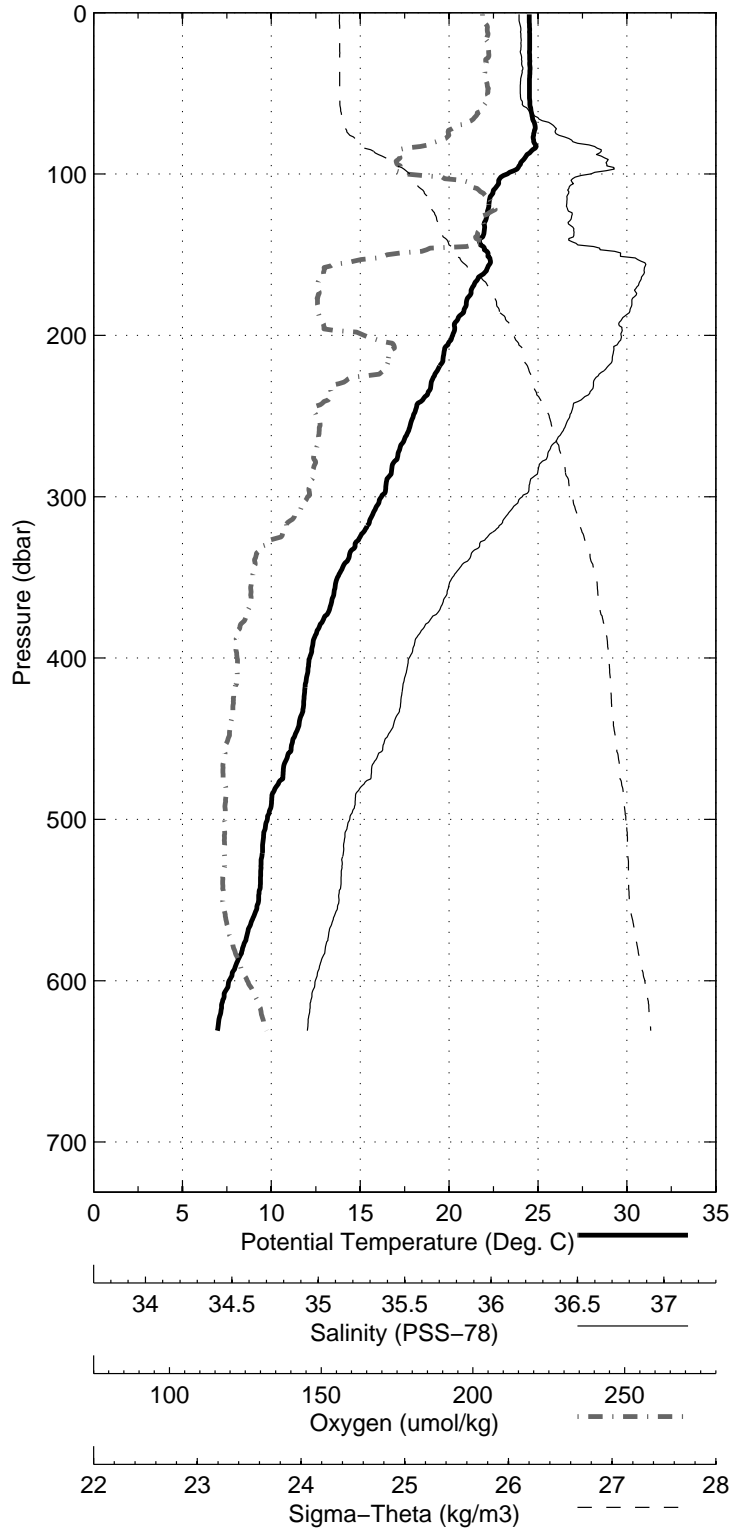


Figure 15: WS0604



Florida Straits R/V FG Walton Smith  
 CTD Station 5 (CTD005)  
 Latitude 27.005 N Longitude 79.499 W  
 30-Jan-2006 10:34 Z

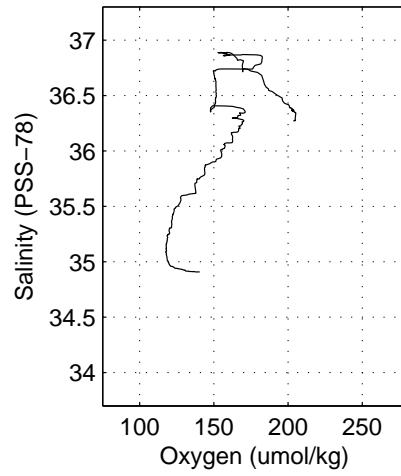
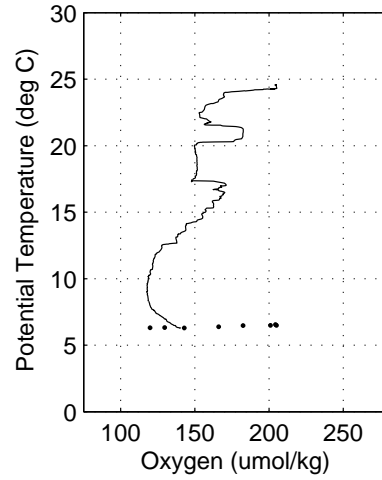
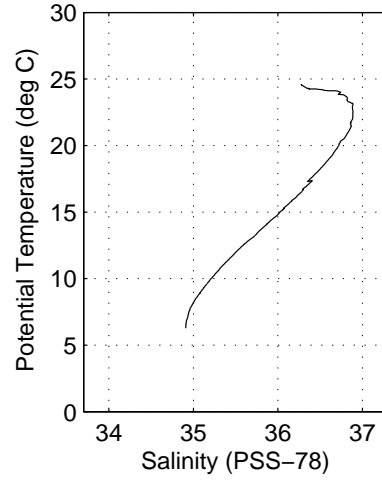
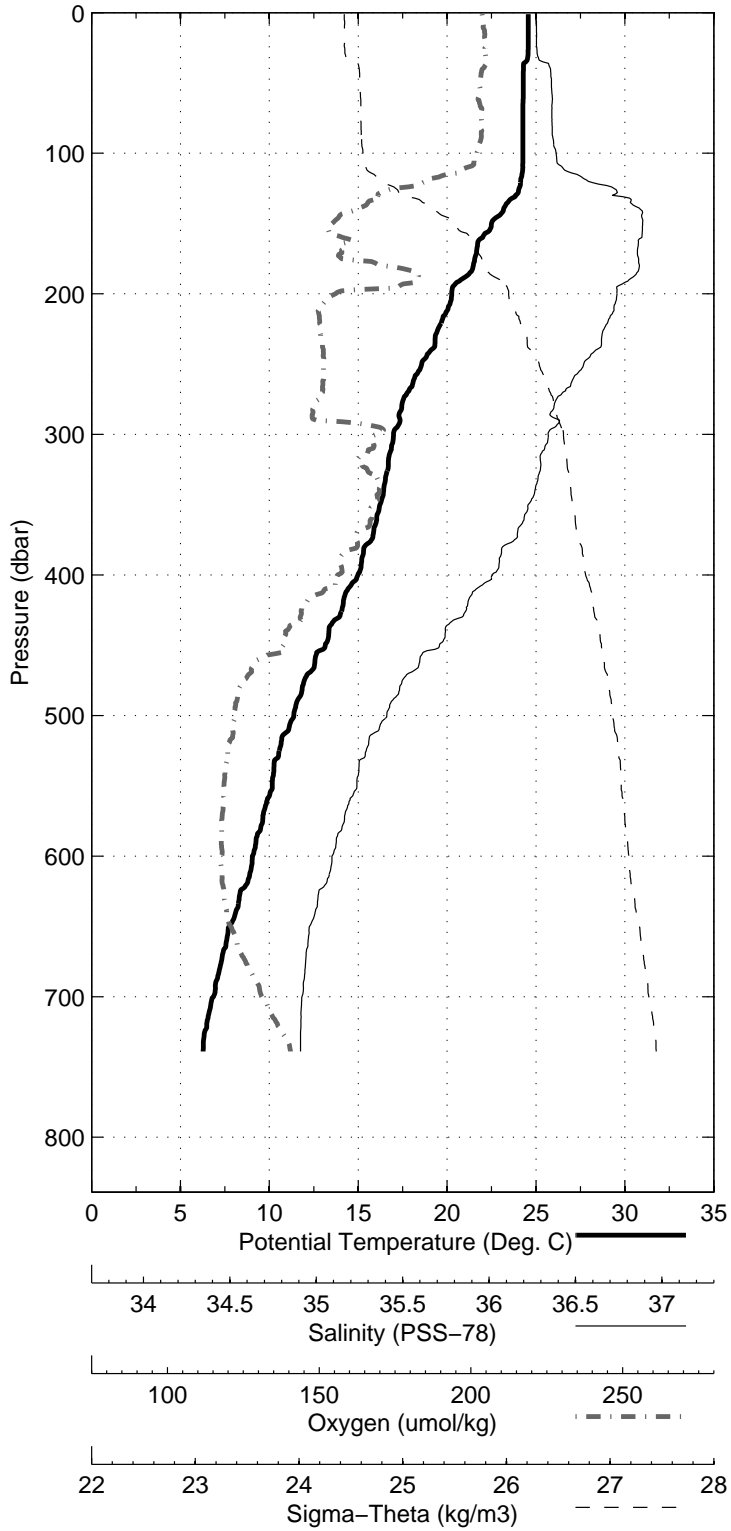


Figure 16: WS0604

Florida Straits R/V FG Walton Smith  
CTD Station 6 (CTD006)  
Latitude 27.000 N Longitude 79.383 W  
30-Jan-2006 07:35 Z

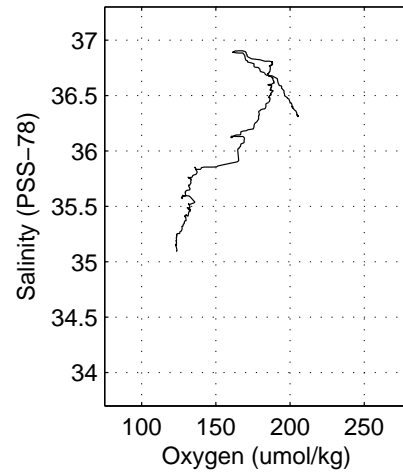
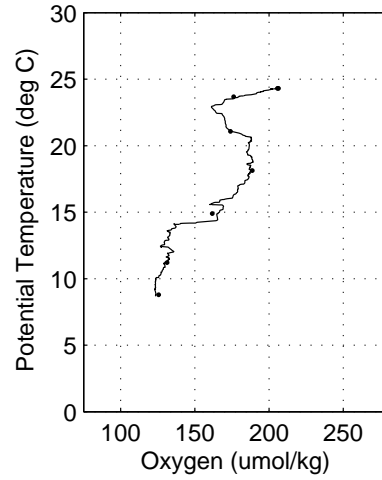
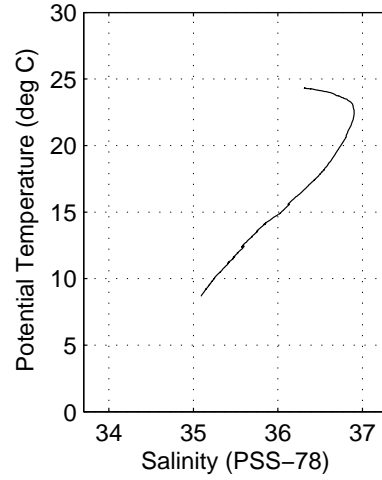
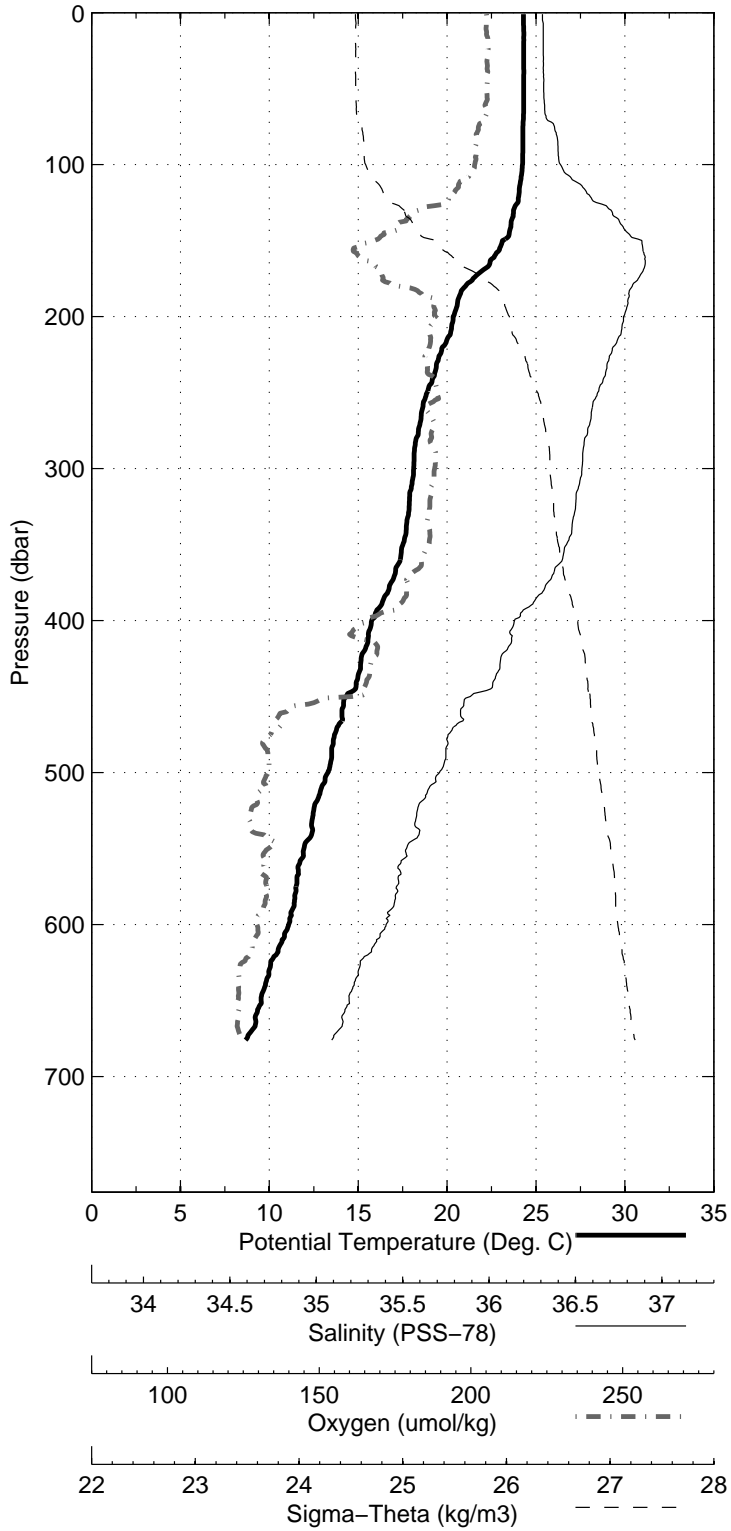


Figure 17: WS0604

Florida Straits R/V FG Walton Smith  
CTD Station 7 (CTD007)  
Latitude 27.003 N Longitude 79.283 W  
30-Jan-2006 04:42 Z

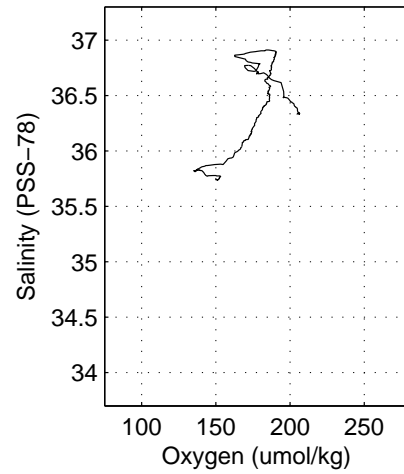
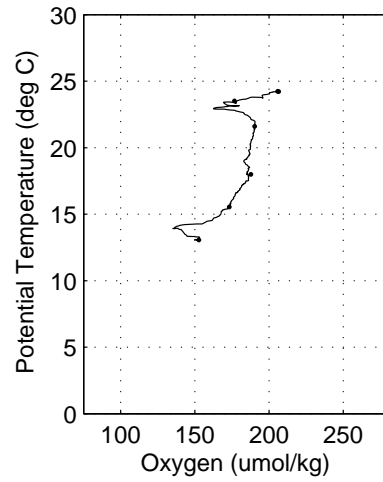
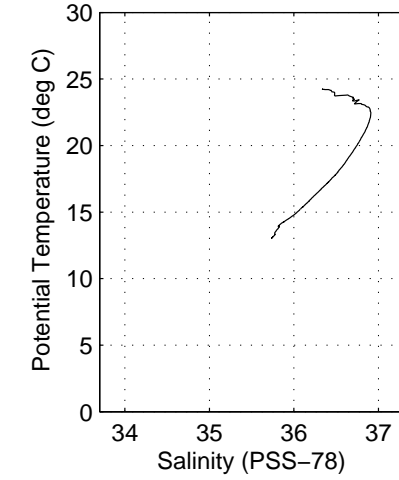
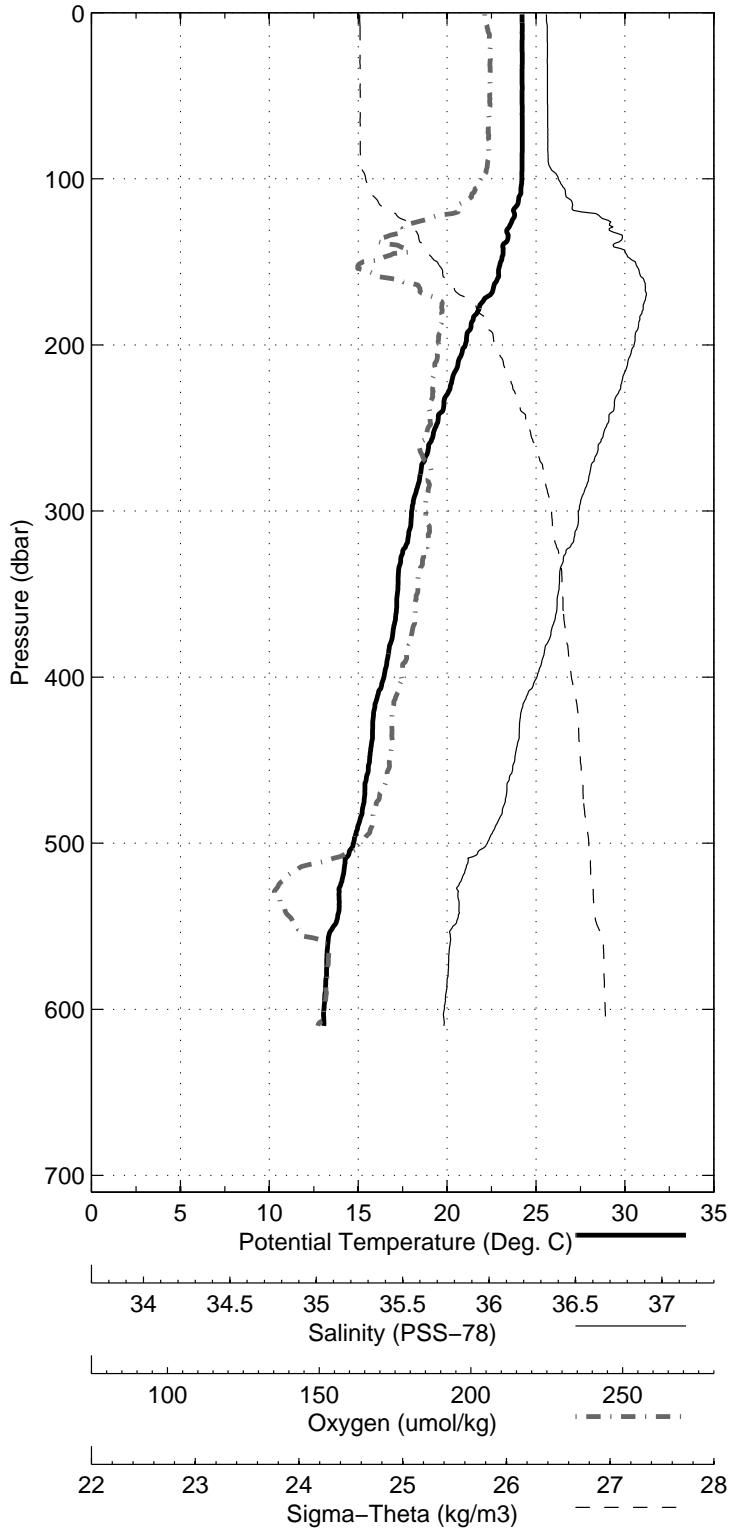


Figure 18: WS0604

Florida Straits R/V FG Walton Smith  
 CTD Station 8 (CTD008)  
 Latitude 27.005 N Longitude 79.204 W  
 30-Jan-2006 03:10 Z

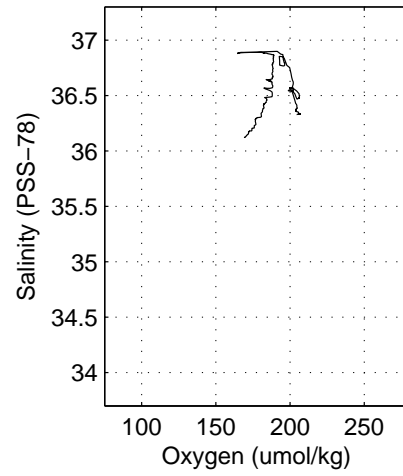
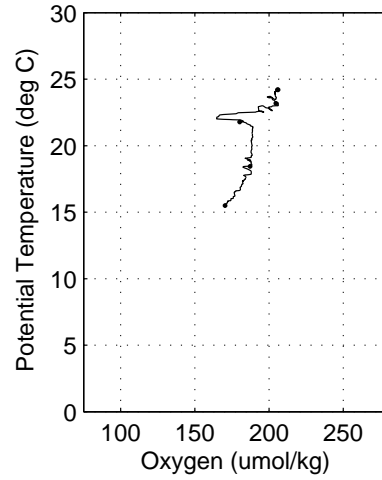
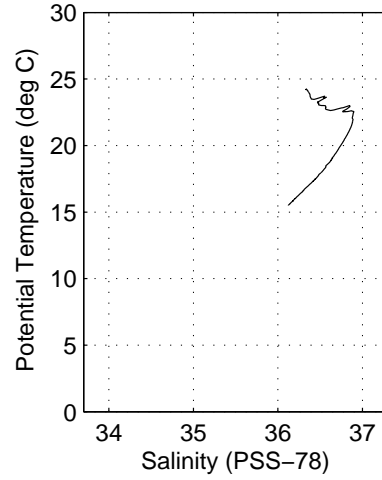
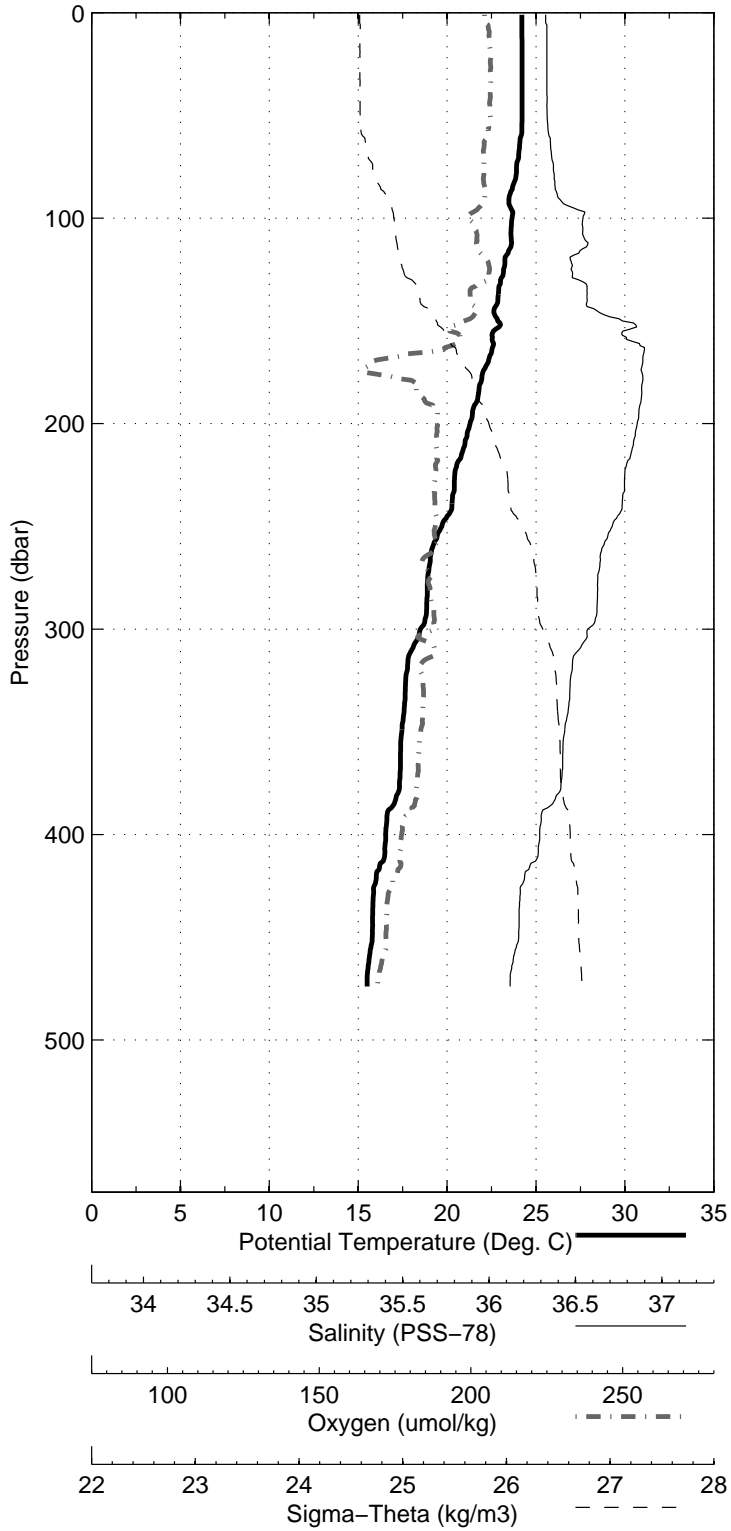


Figure 19: WS0604