

Straits of Florida: CTD data calibration report
NOAA/AOML: Western Boundary Time Series program

Cruise ID: WS0531

Cruise date: December, 2005

Rigoberto F. Garcia

Christopher S. Meinen

Molly O. Baringer

June 14, 2007

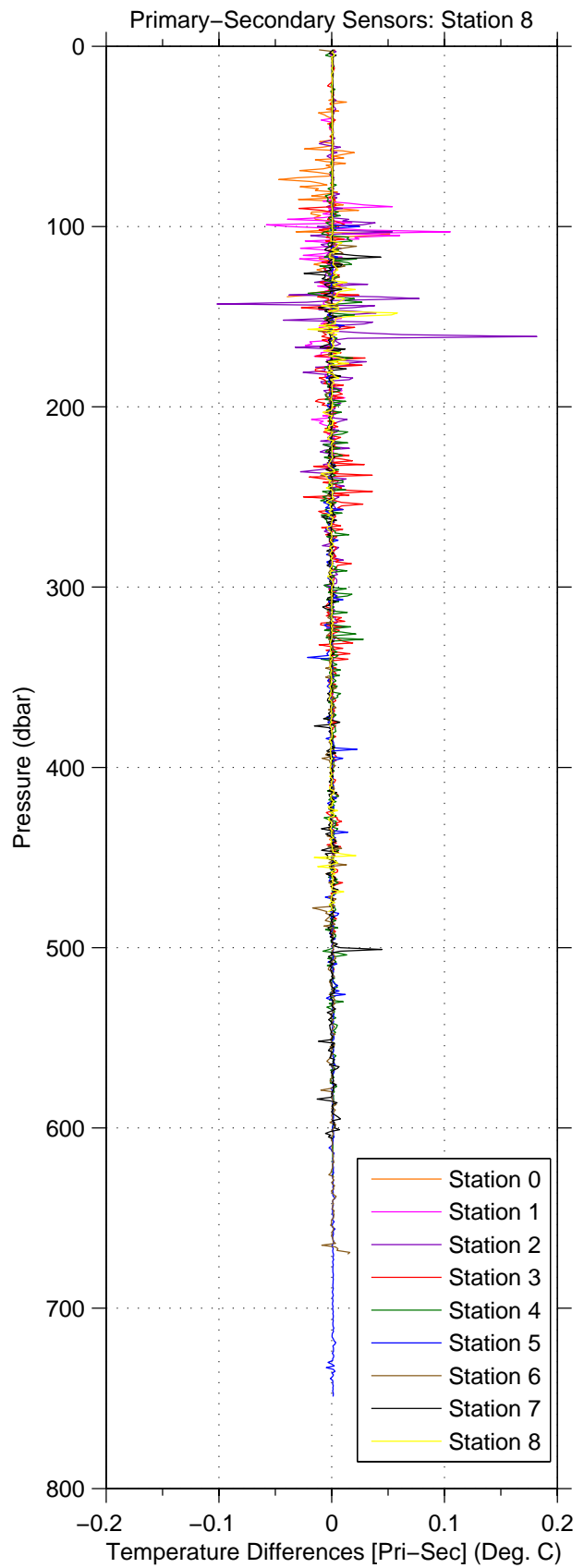
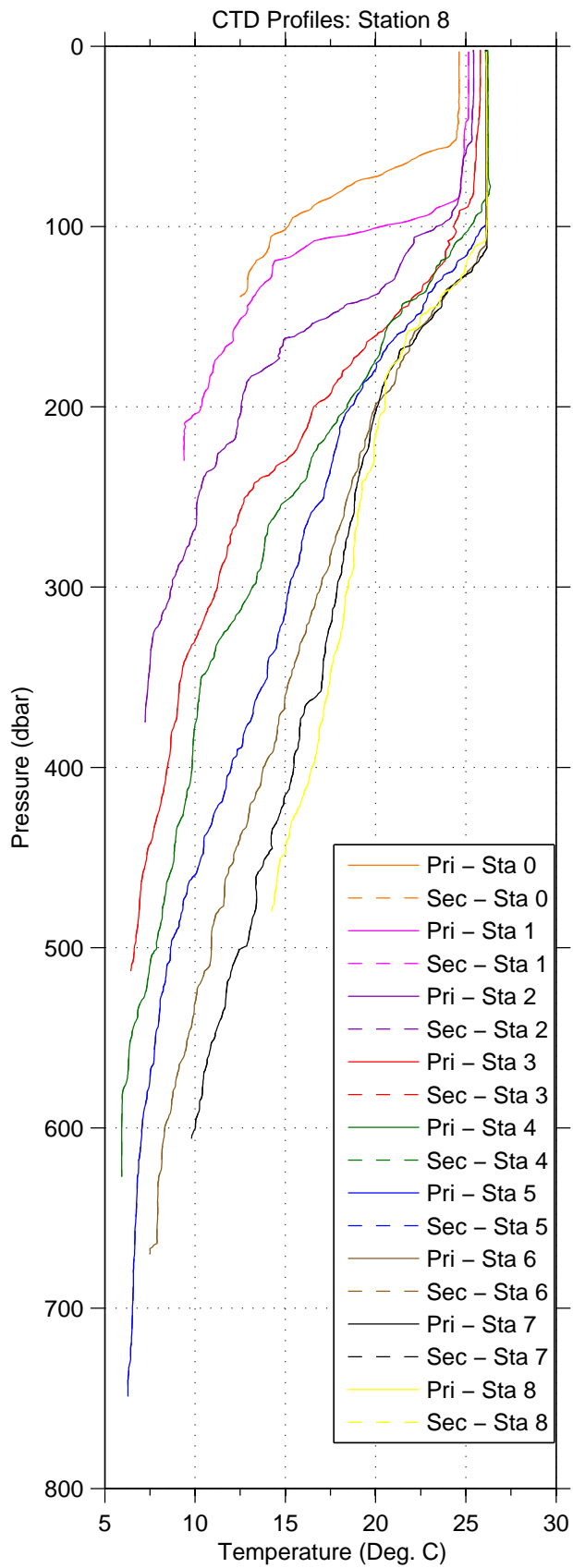


Figure 1: WS0531

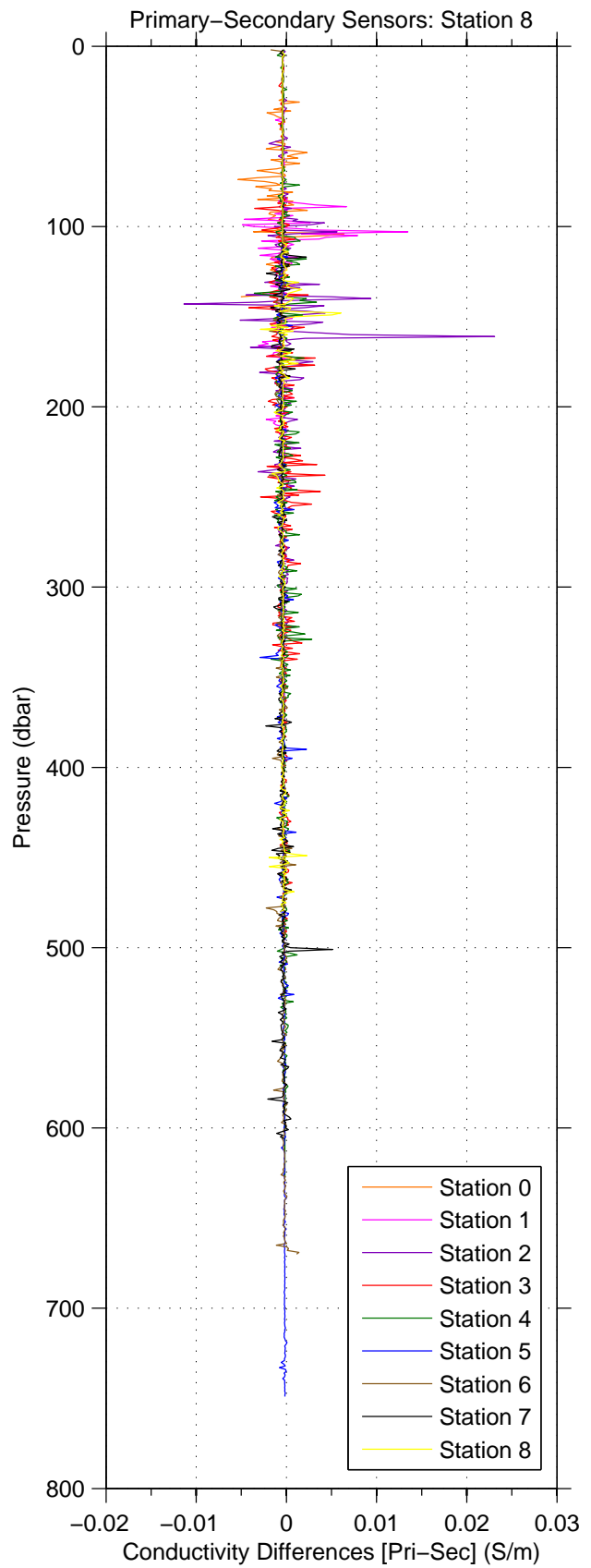
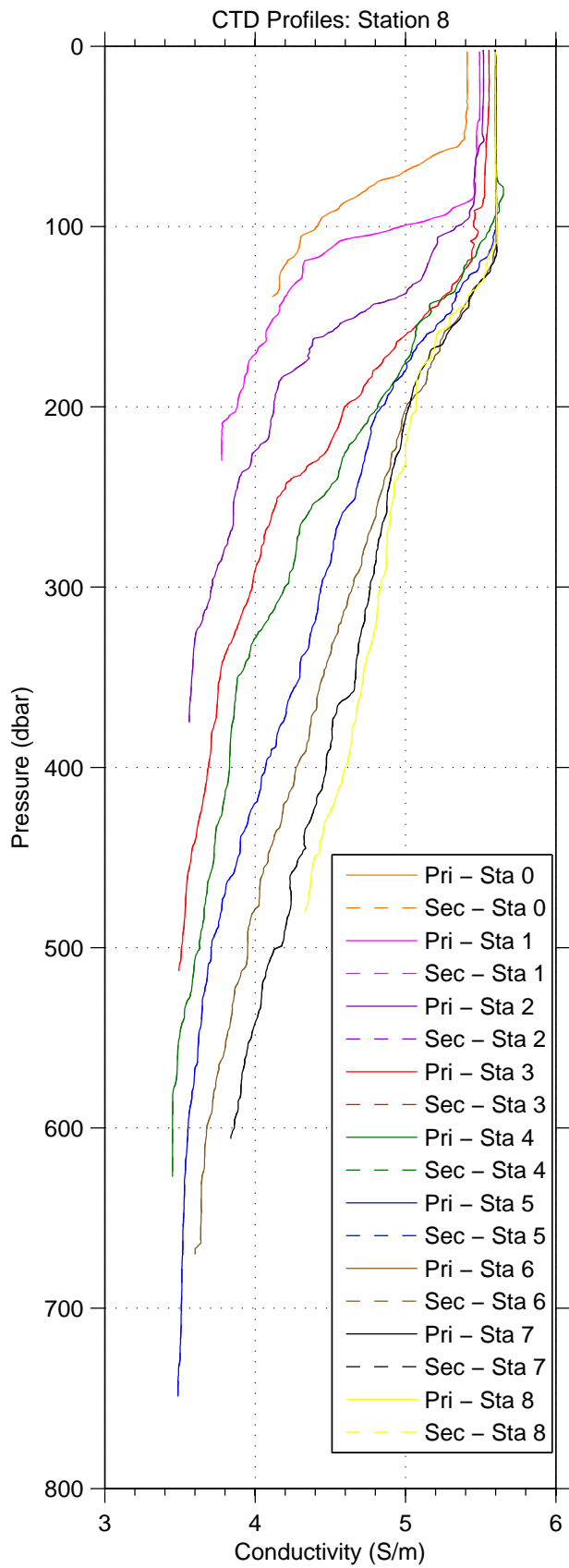


Figure 2: WS0531

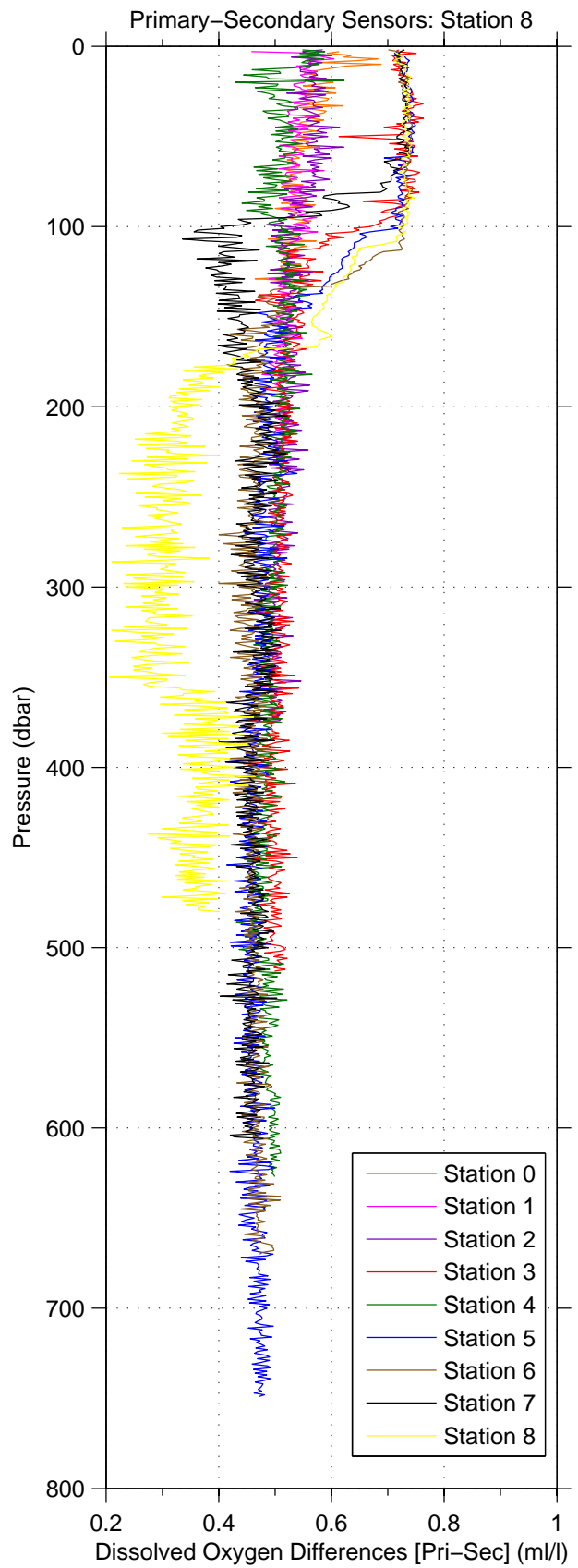
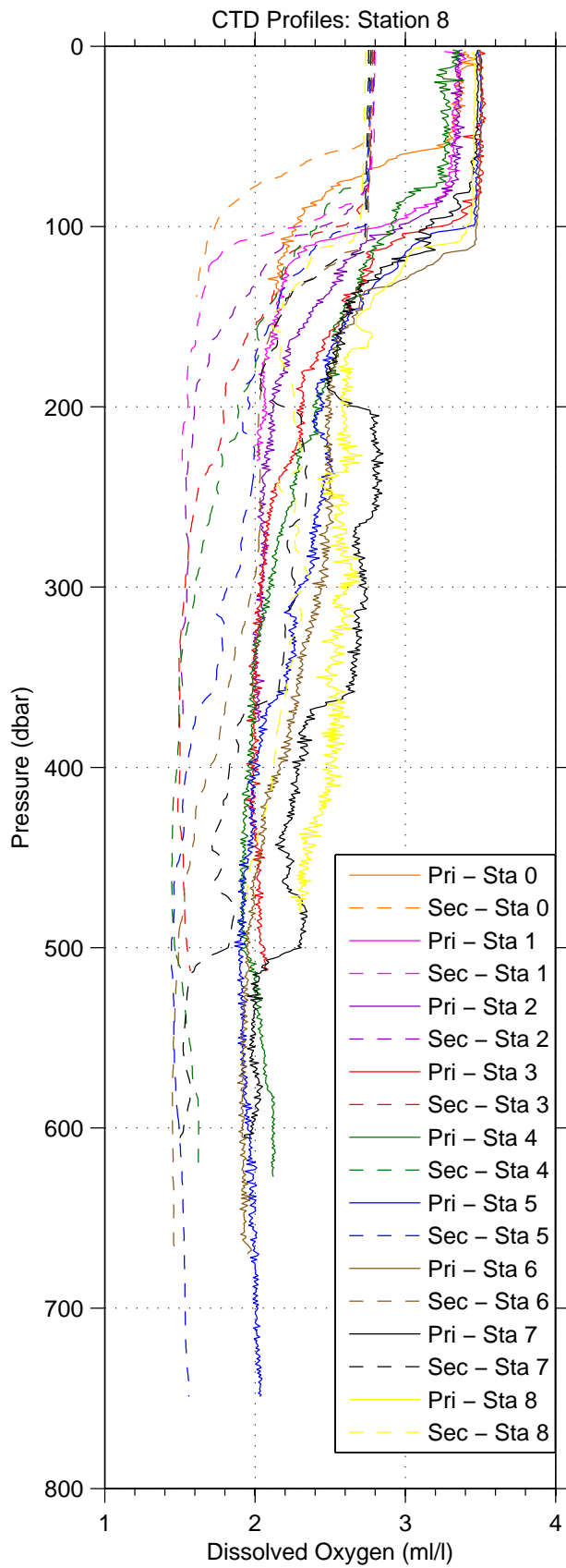


Figure 3: WS0531

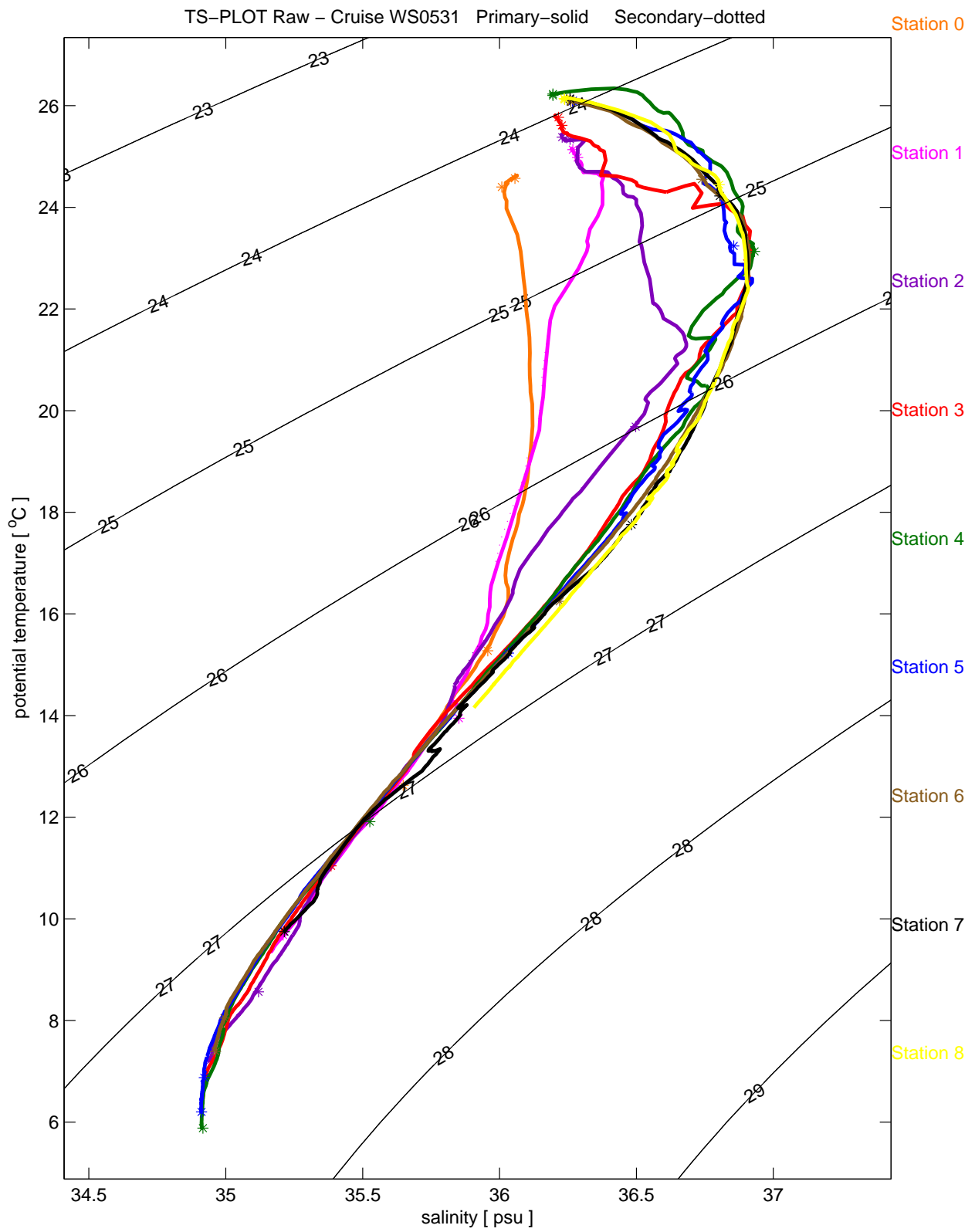


Figure 4: WS0531

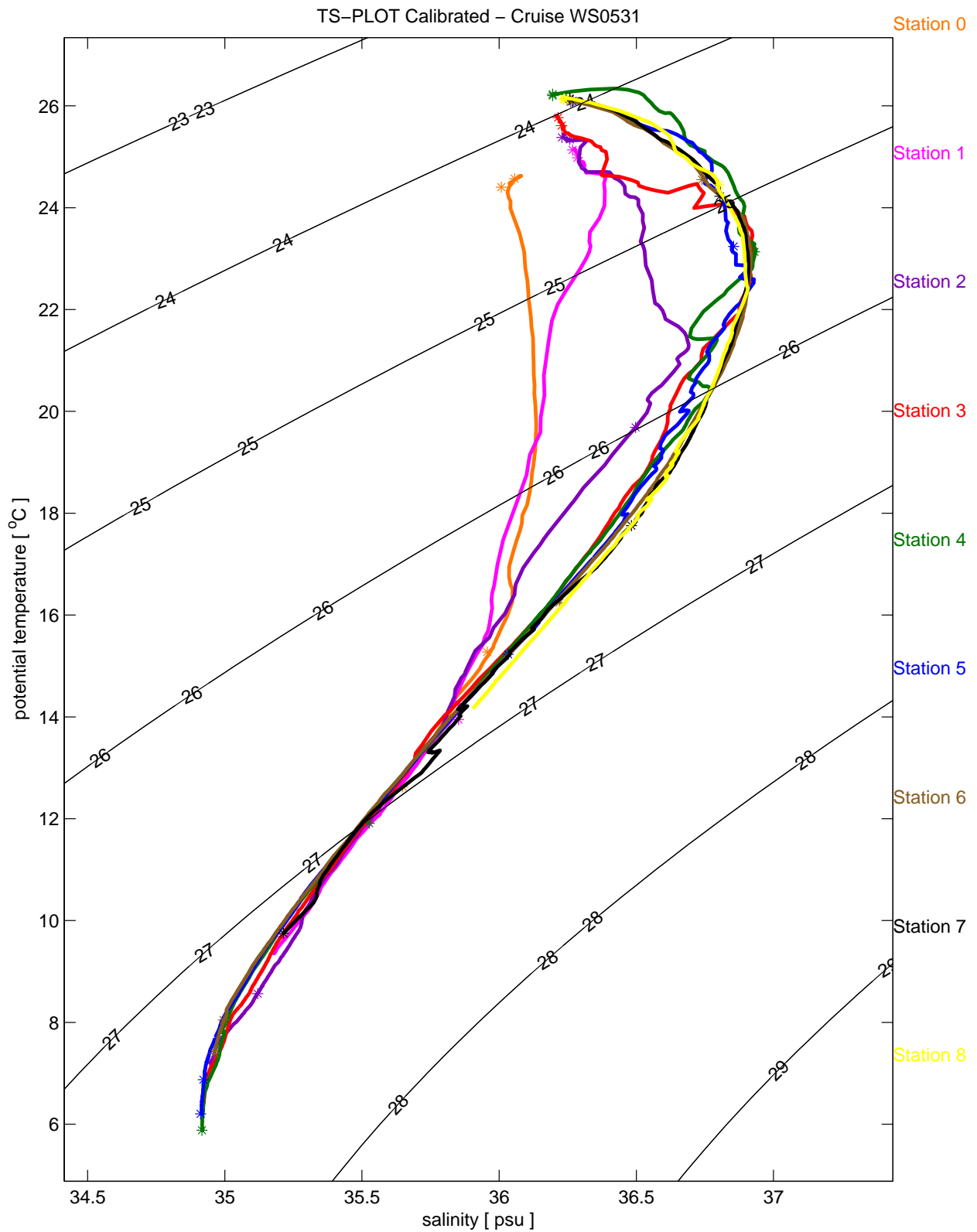


Figure 5: WS0531

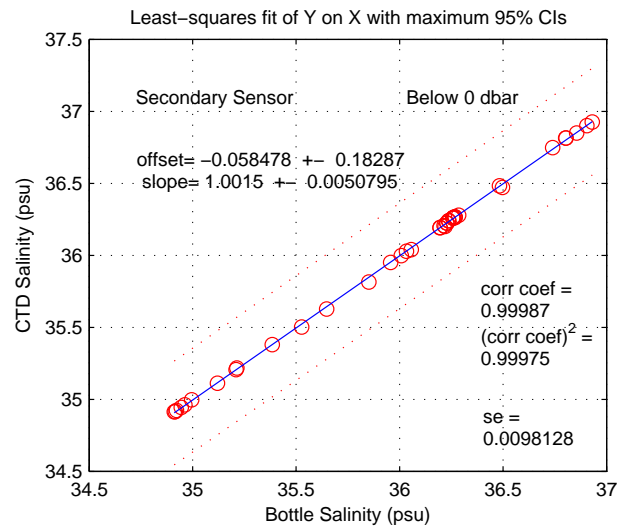
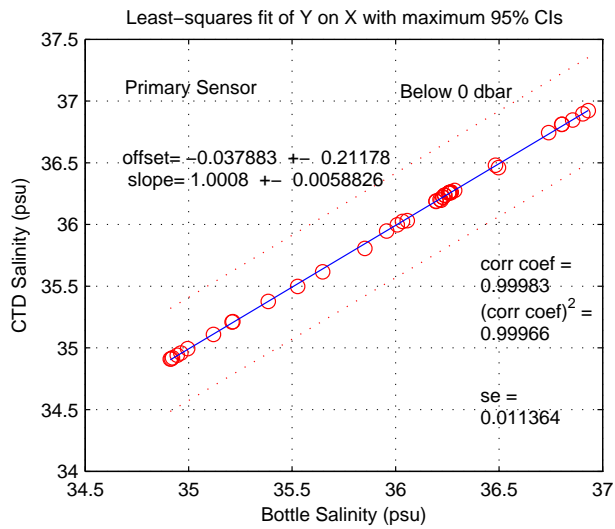
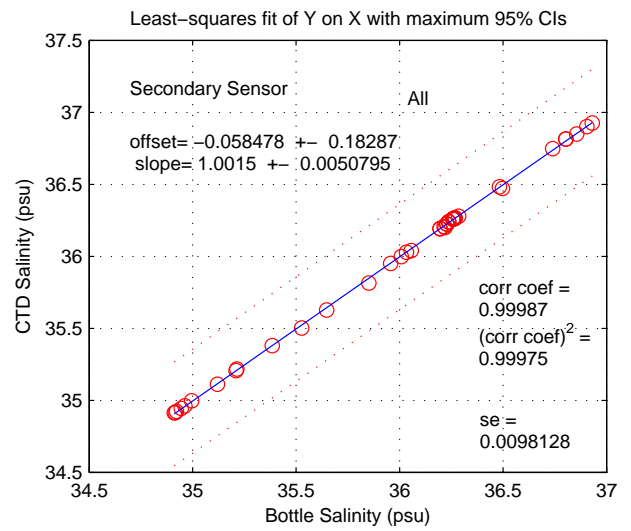
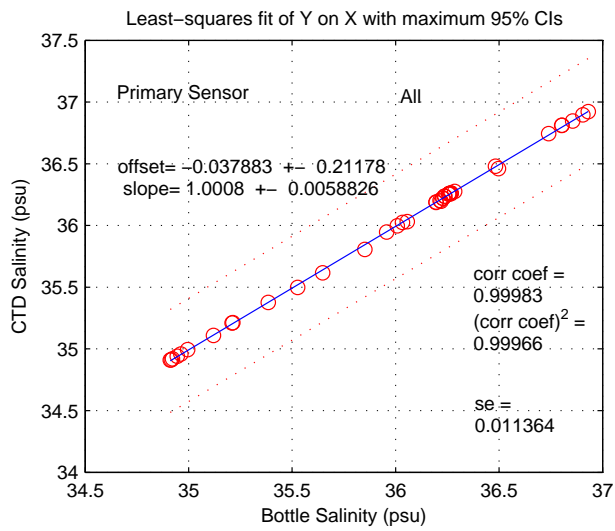
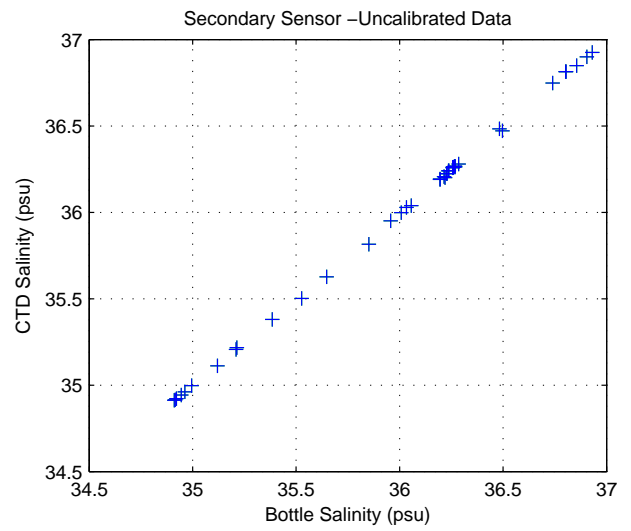
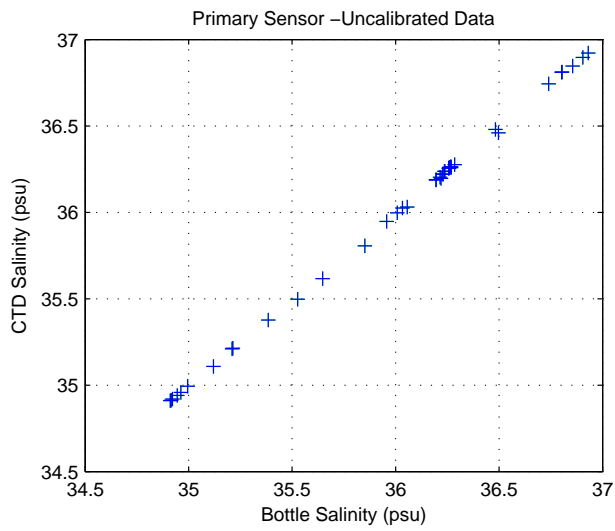


Figure 6: WS0531

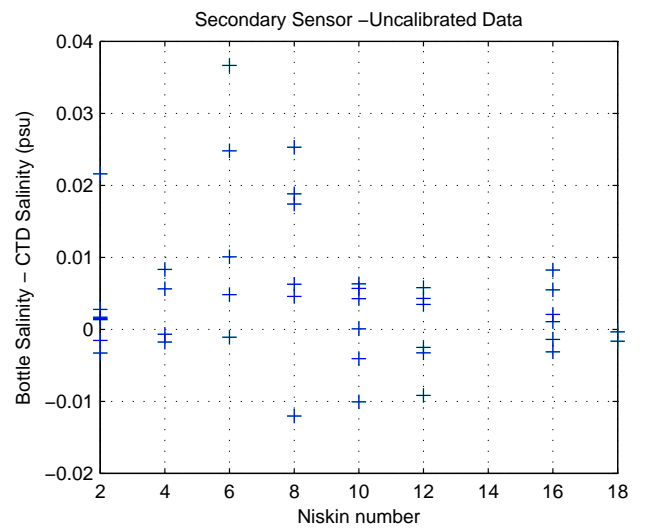
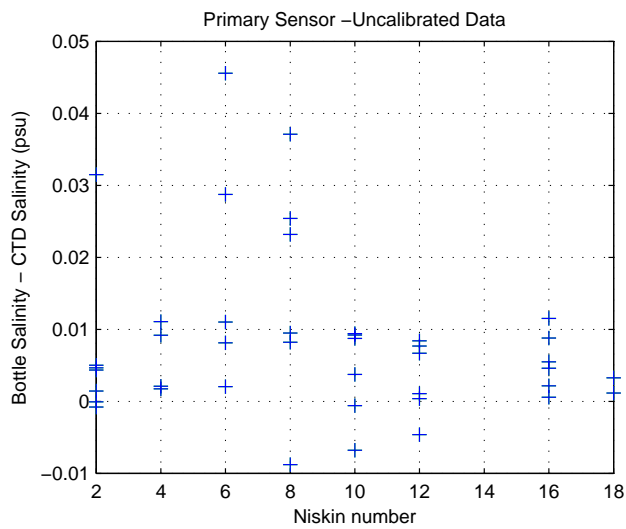
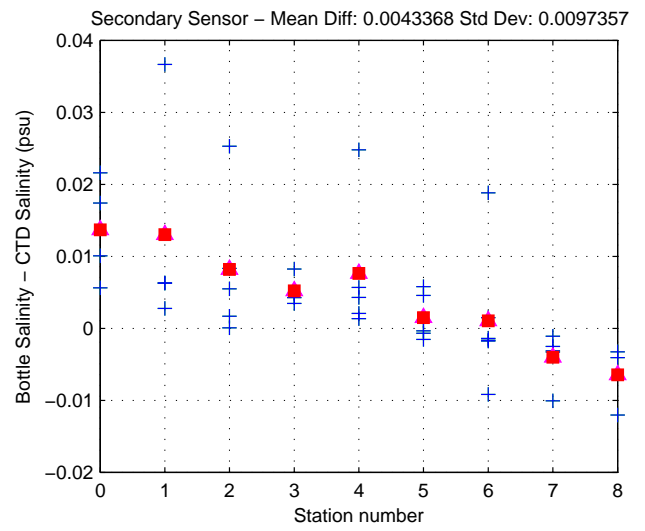
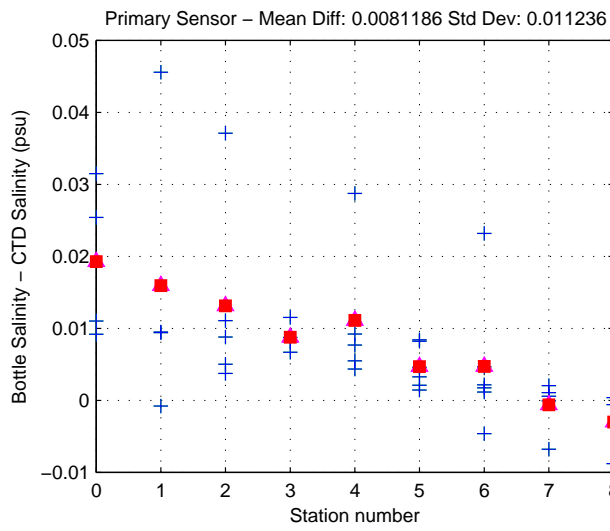
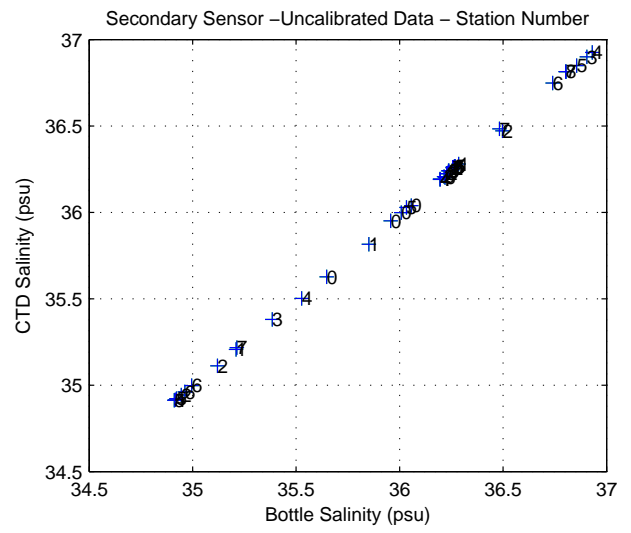
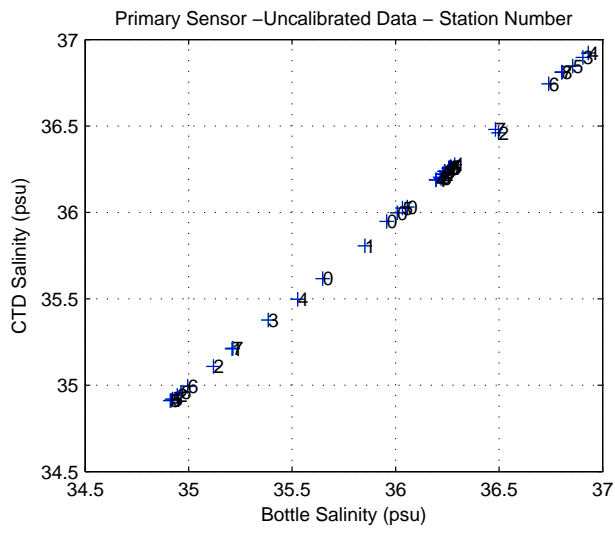


Figure 7: WS0531

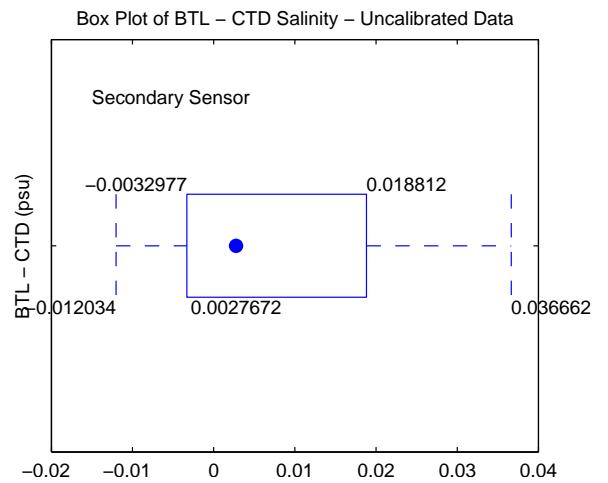
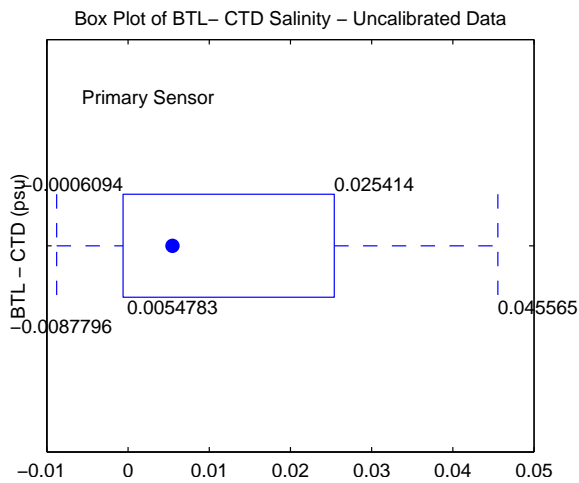
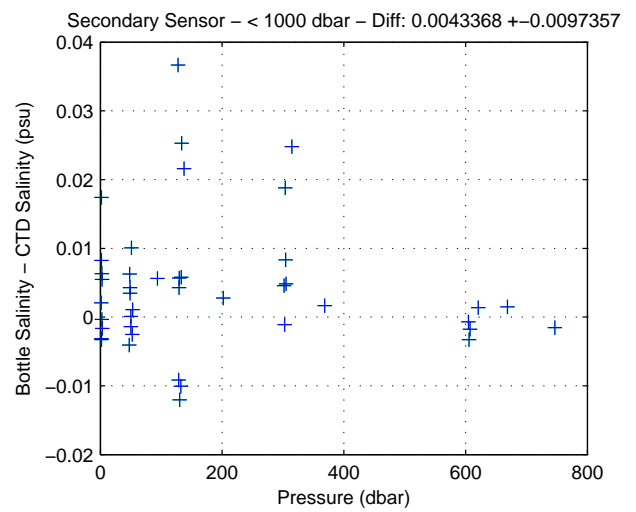
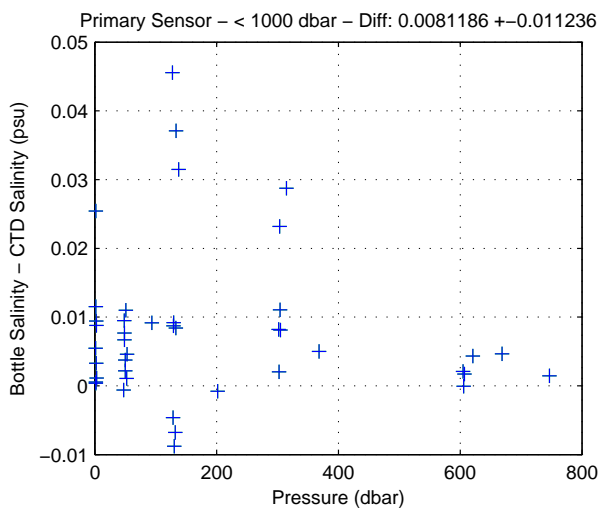
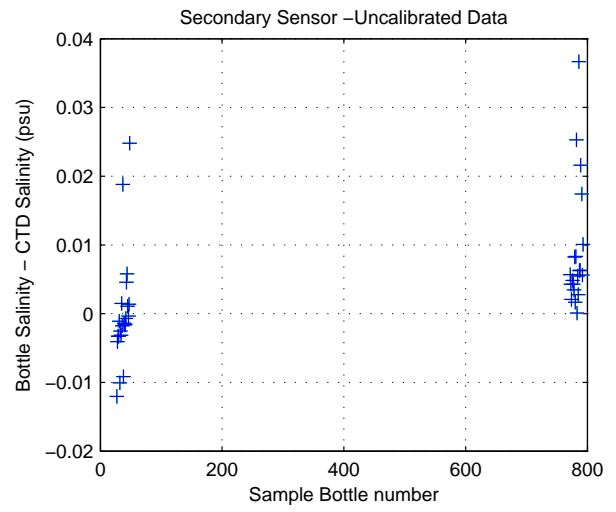
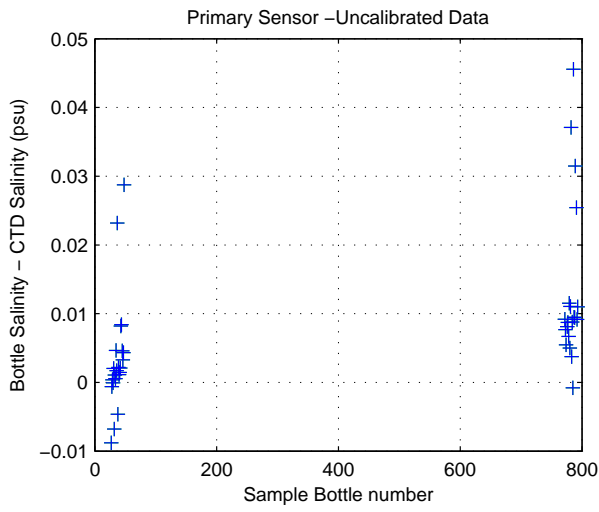


Figure 8: WS0531

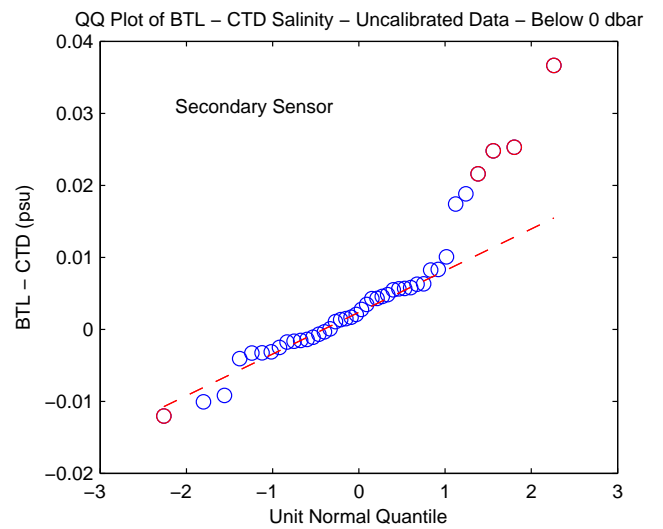
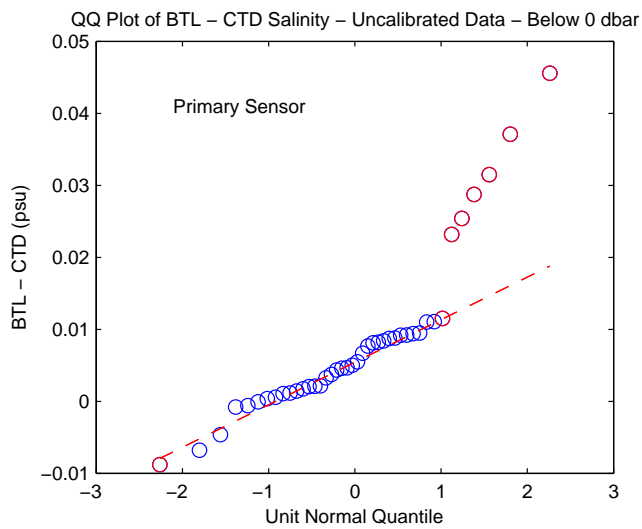
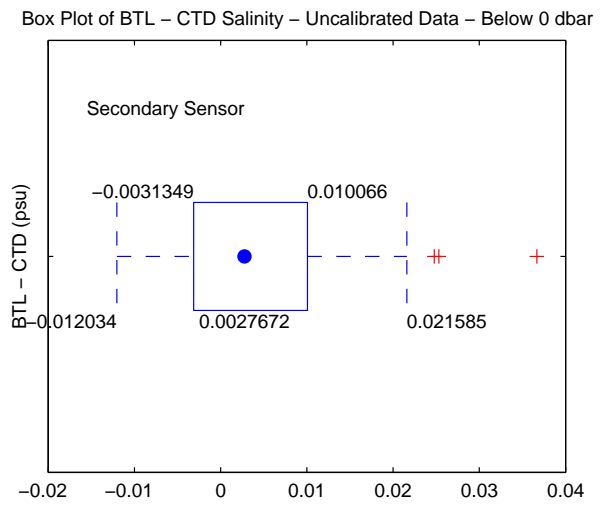
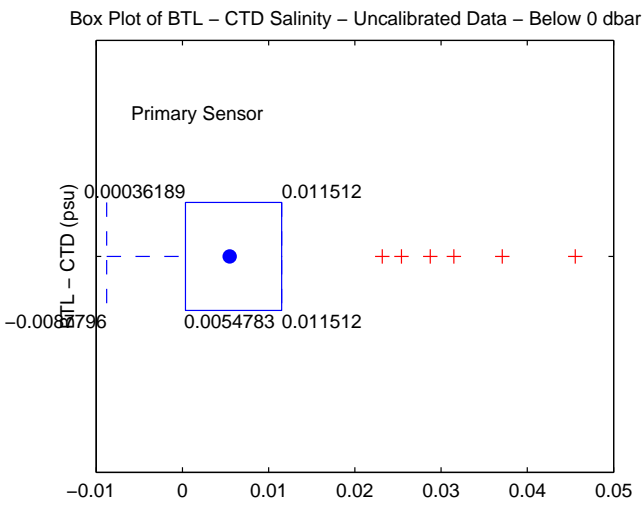
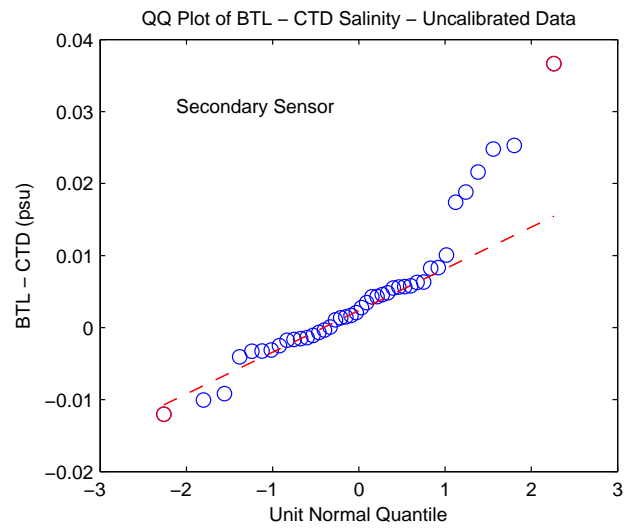
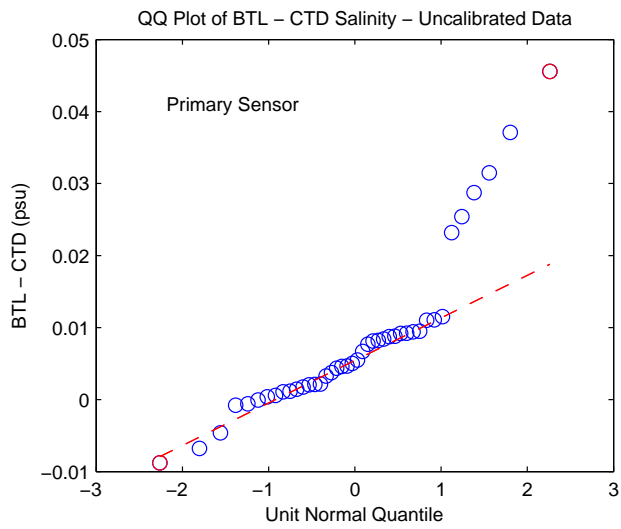


Figure 9: WS0531

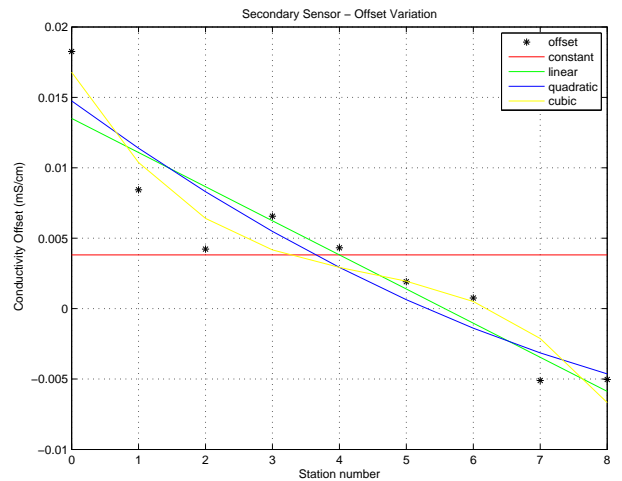
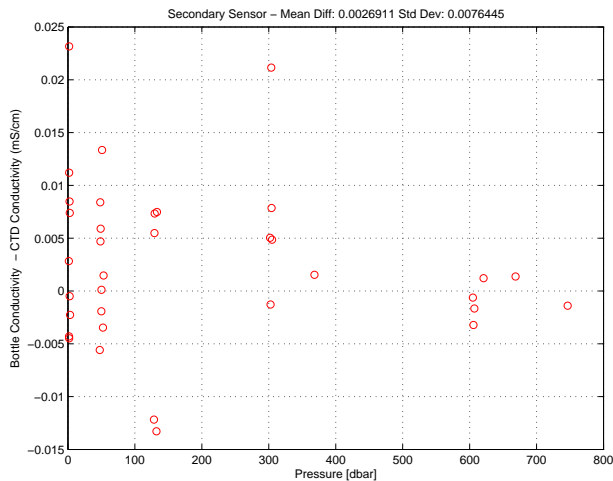
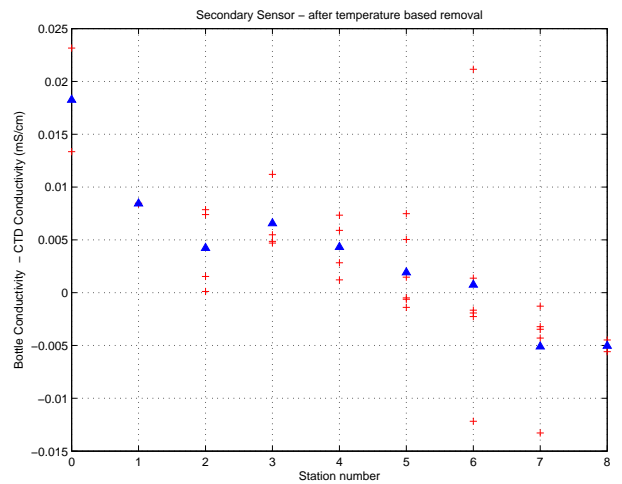
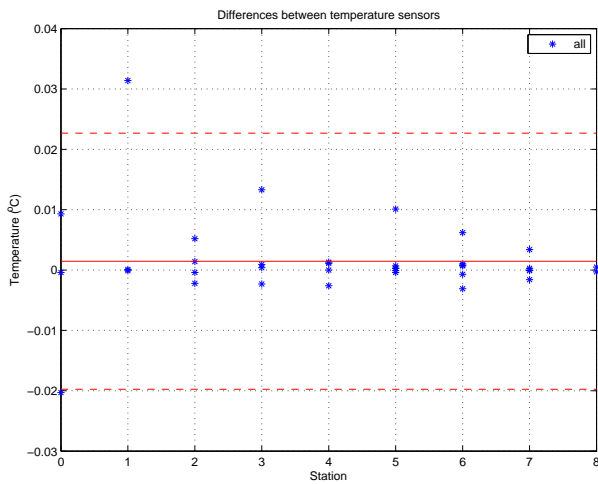
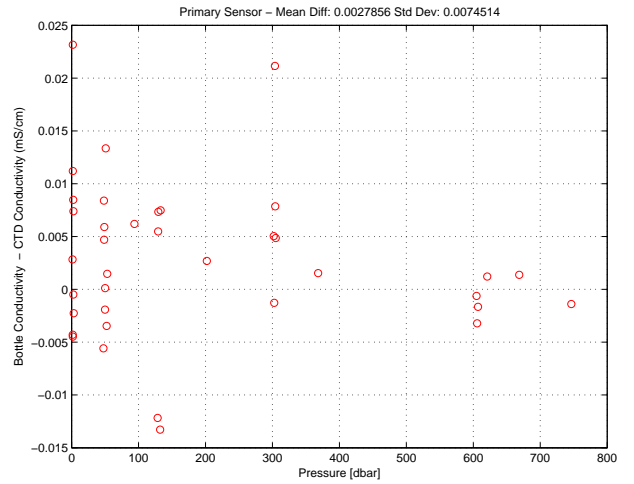
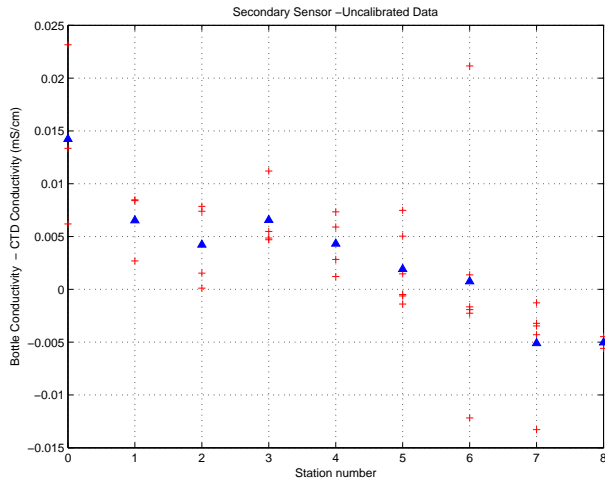


Figure 10: WS0531. Conductivity Calibration

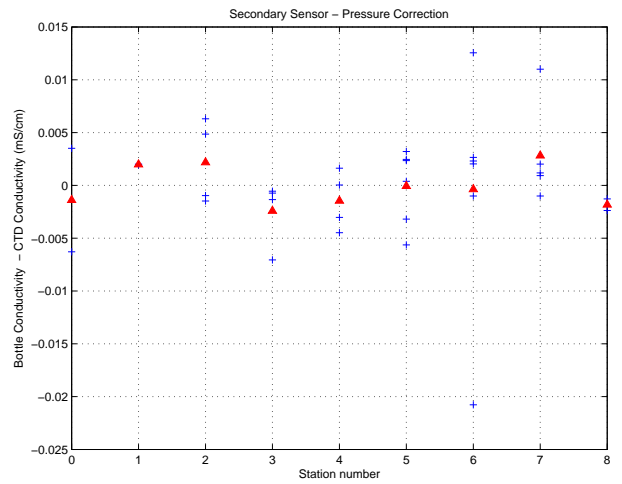
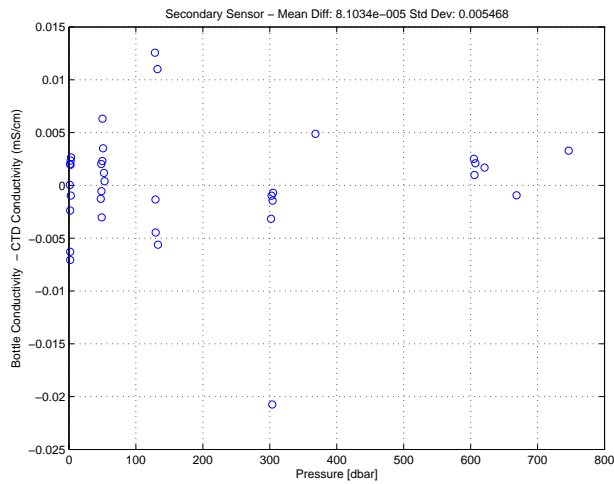
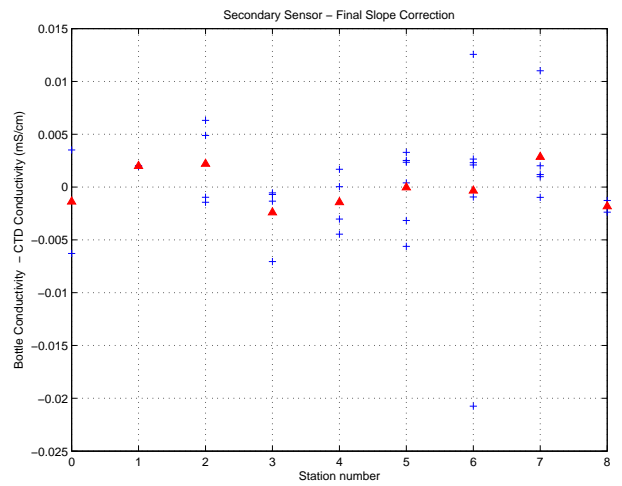
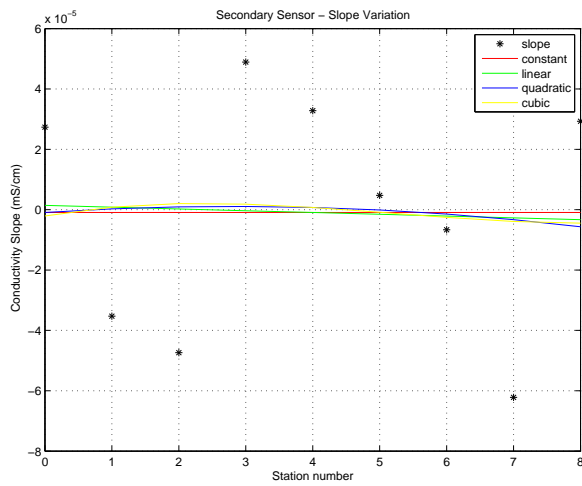
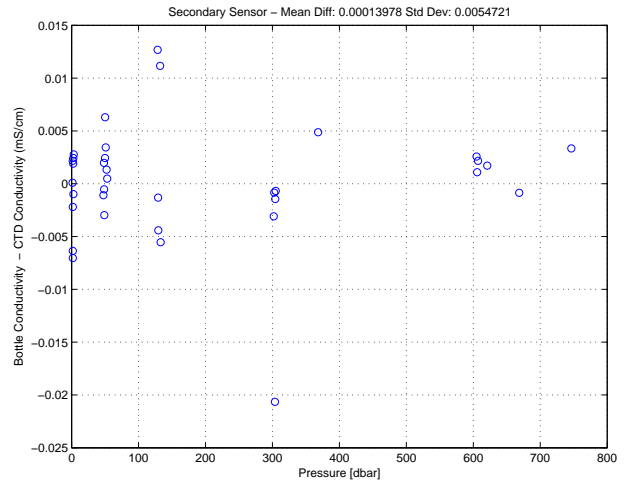
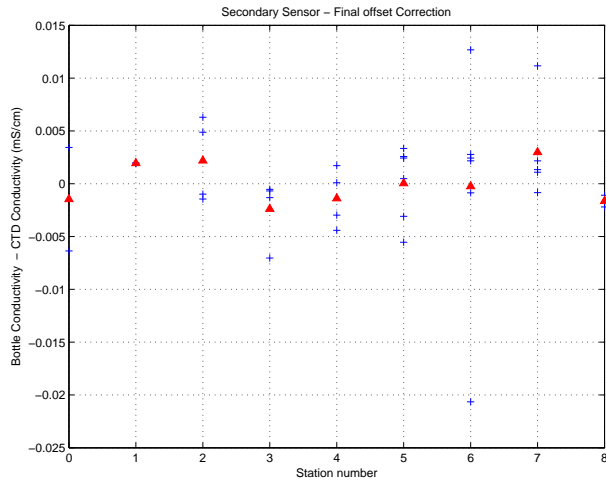


Figure 11: WS0531. Conductivity Calibration (cont.)

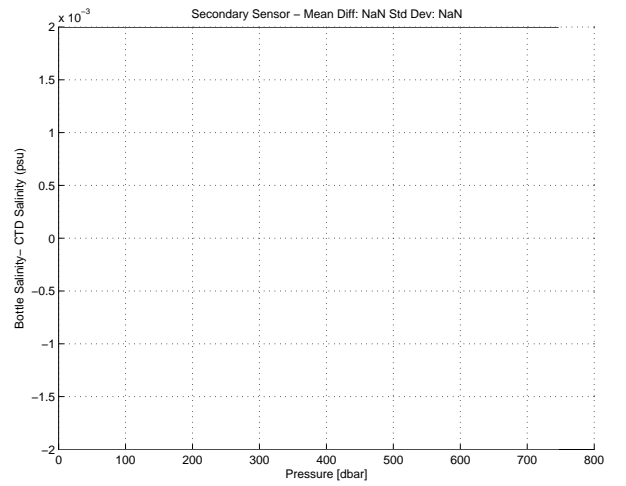
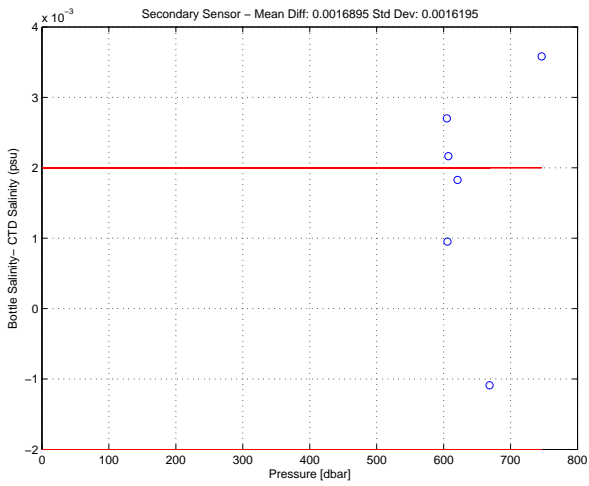
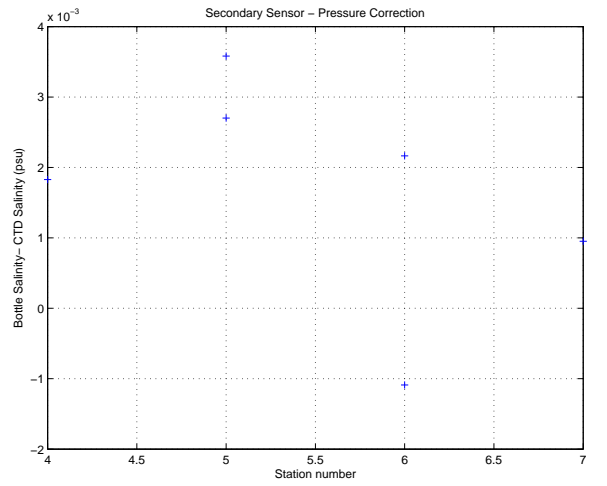
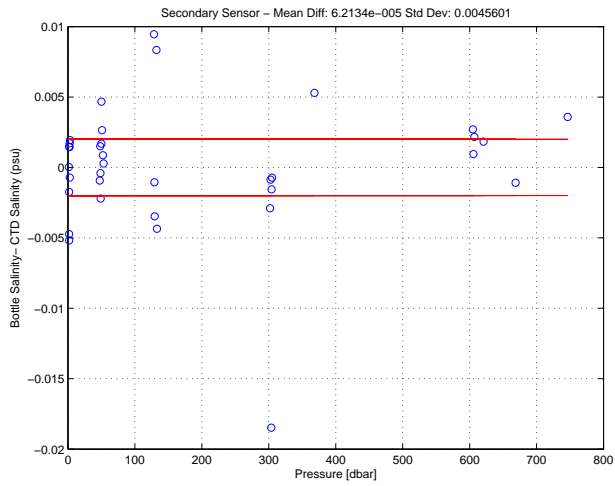
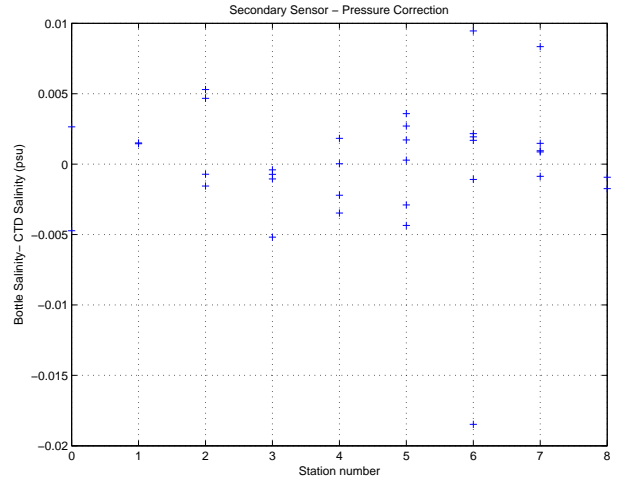
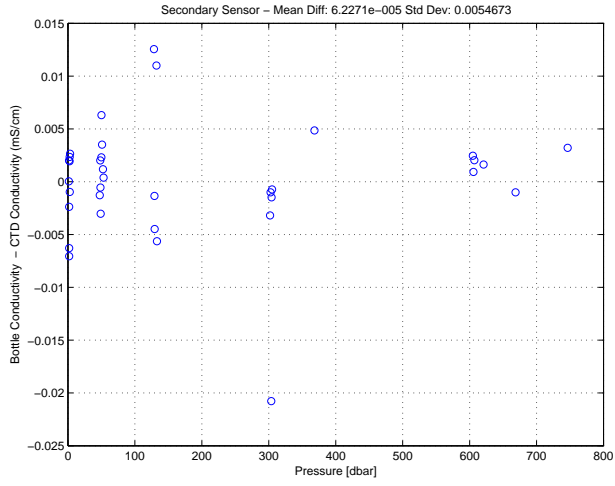


Figure 12: WS0531. Conductivity Calibration (cont.)

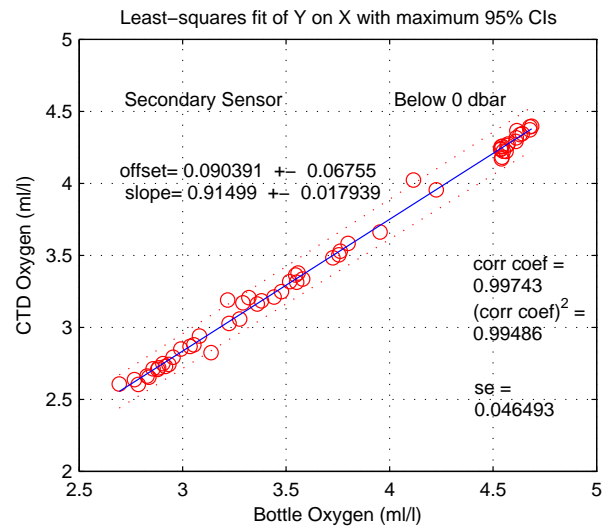
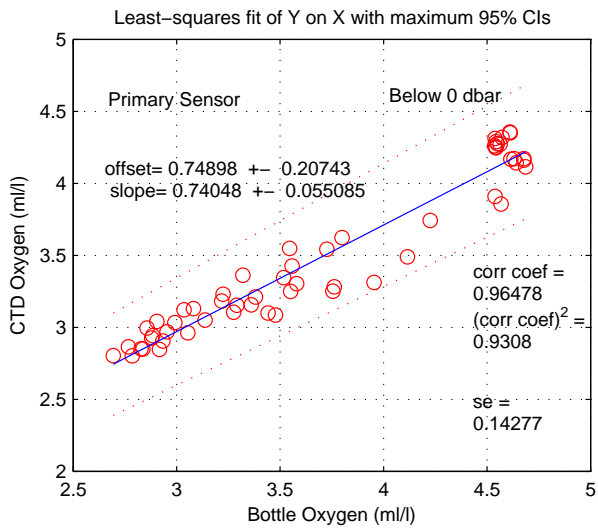
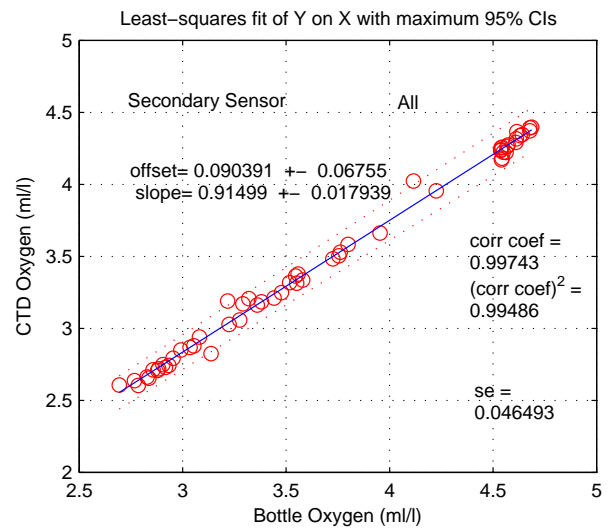
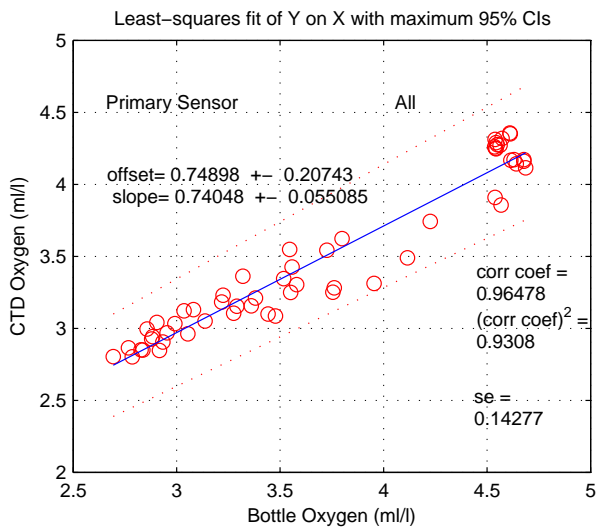
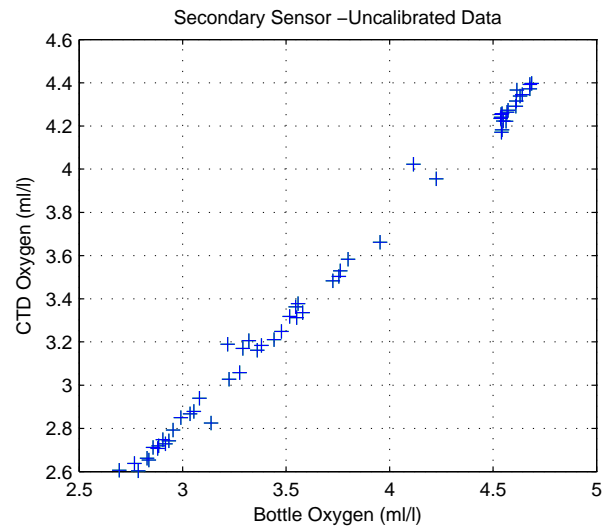
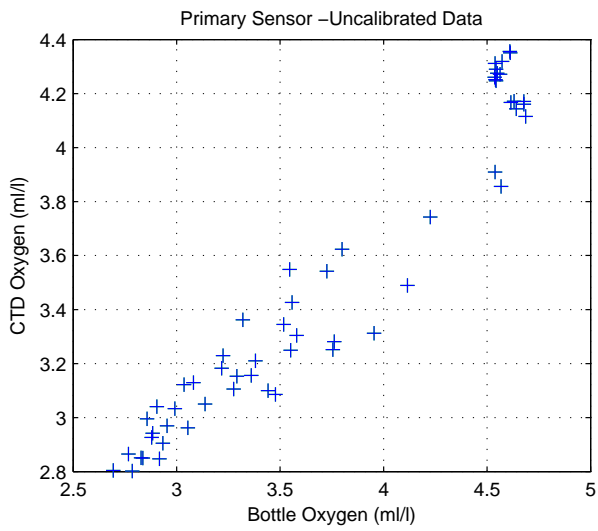


Figure 13: WS0531

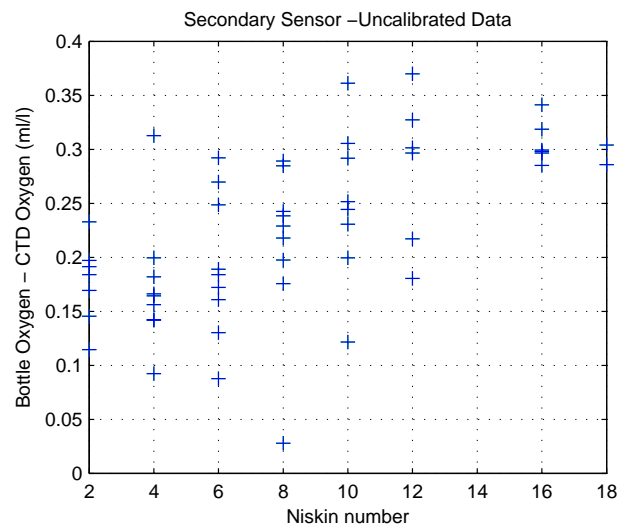
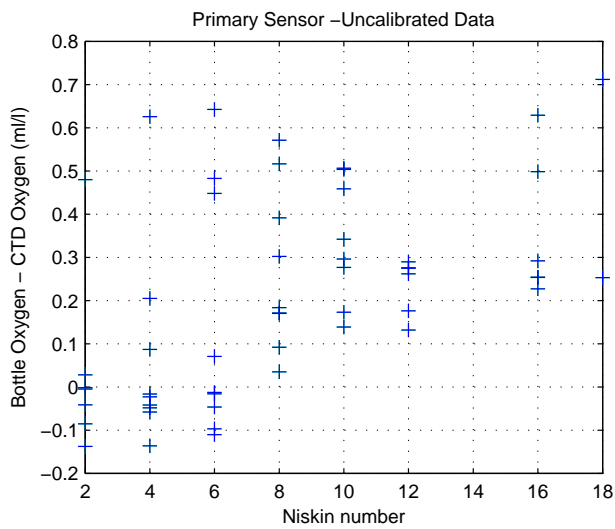
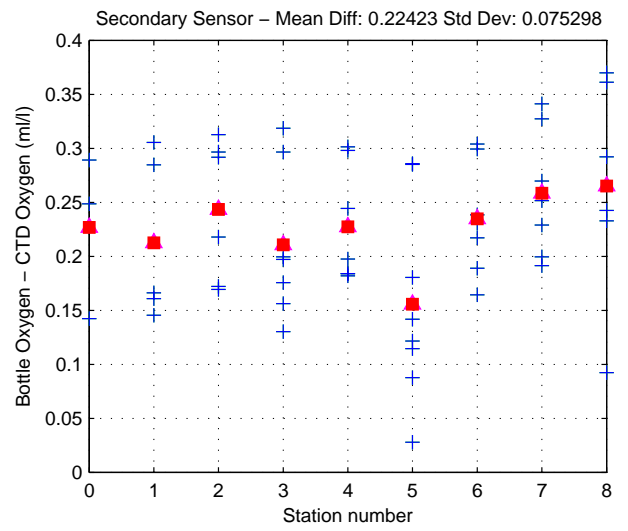
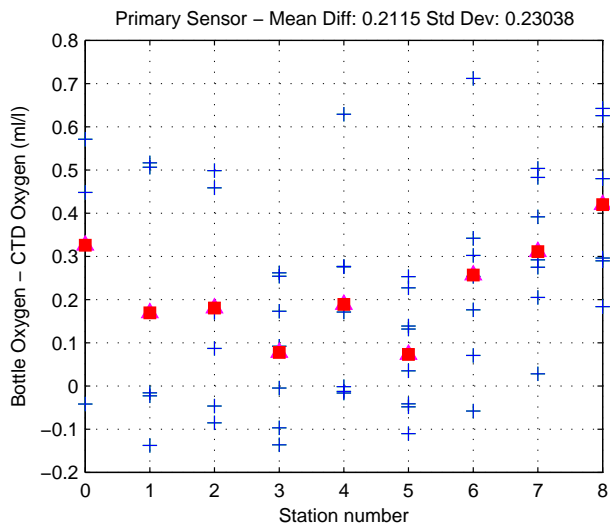
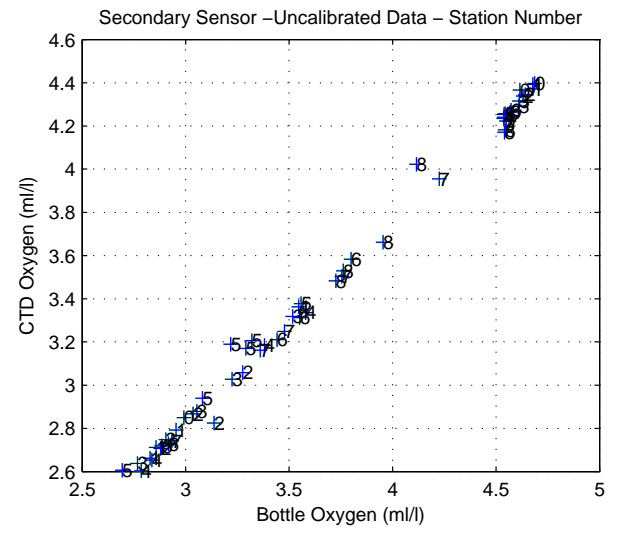
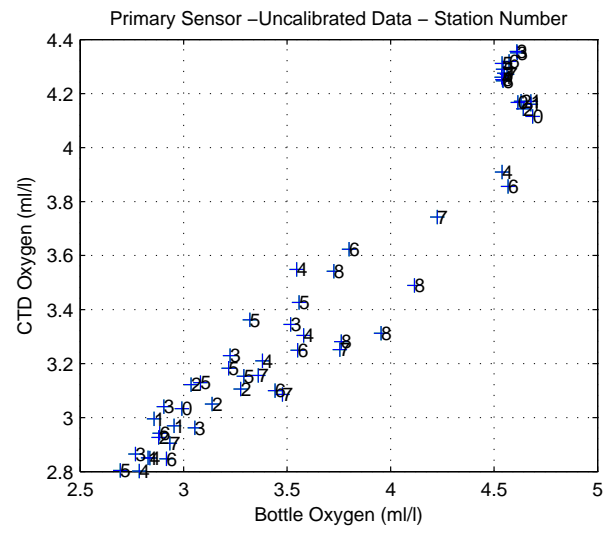


Figure 14: WS0531

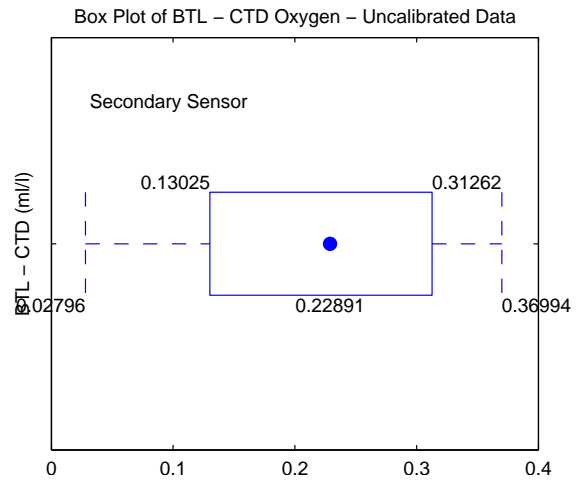
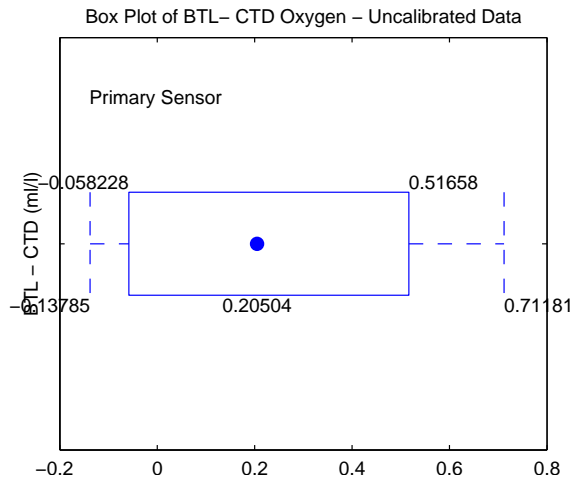
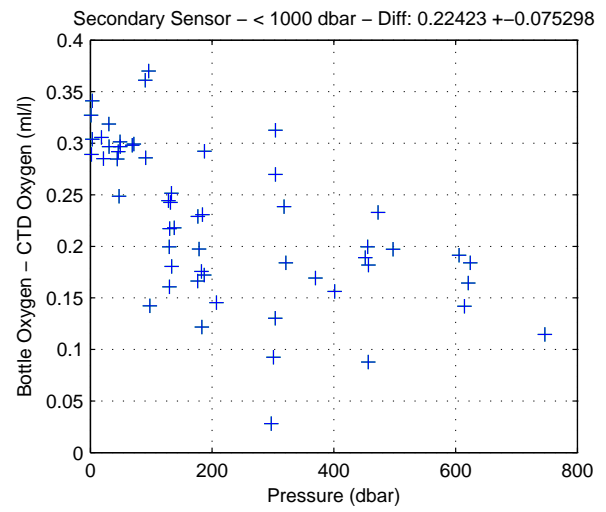
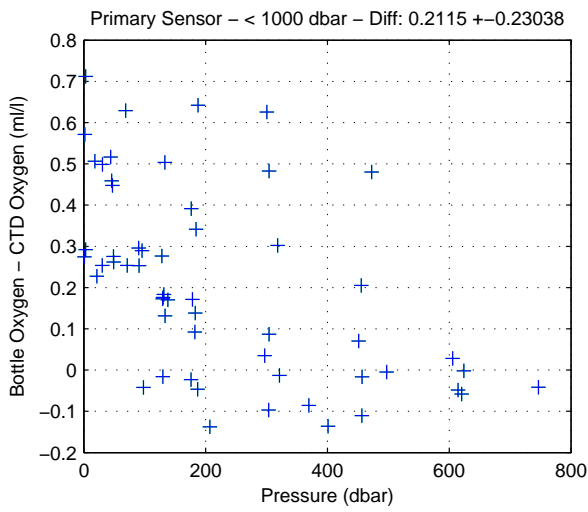
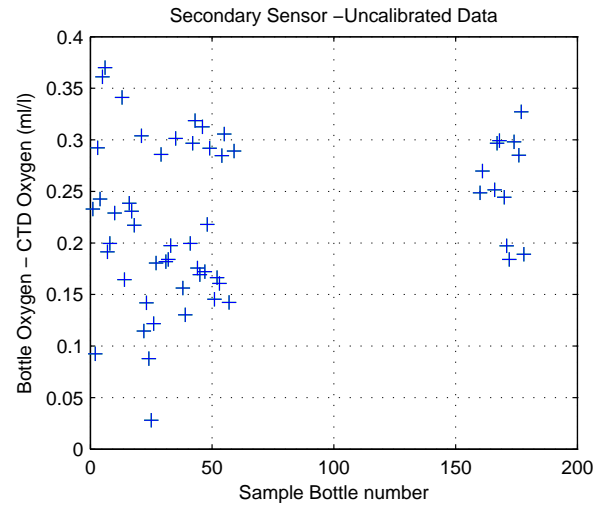
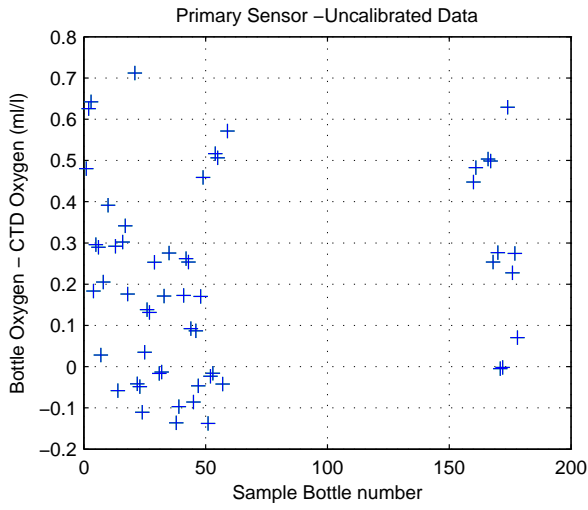


Figure 15: WS0531

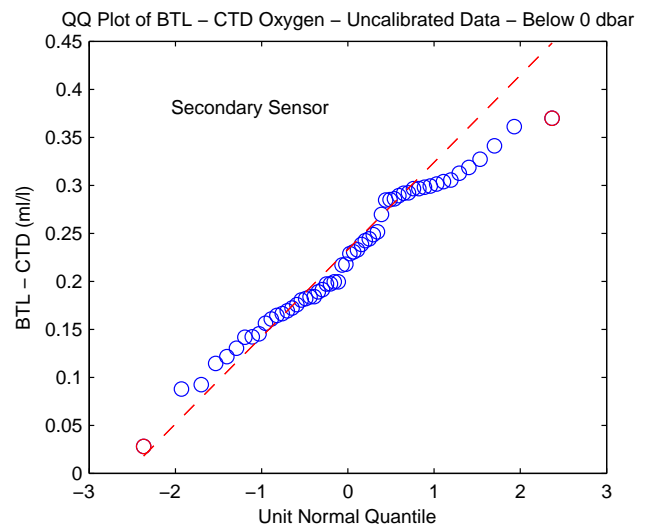
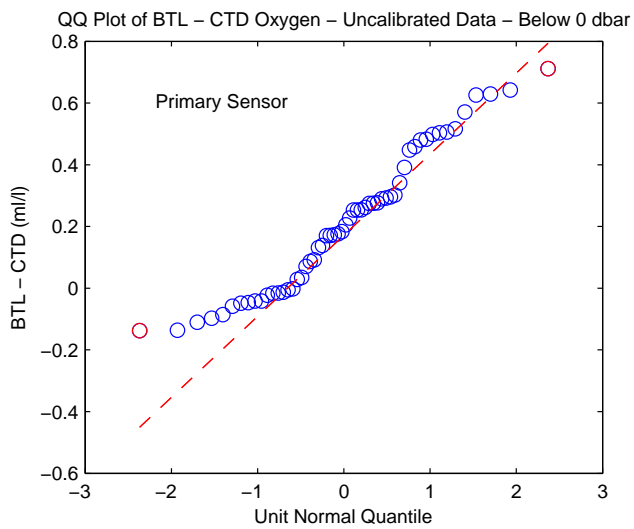
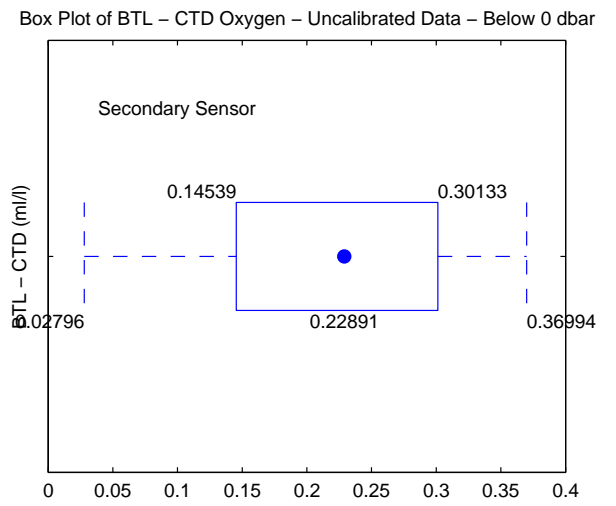
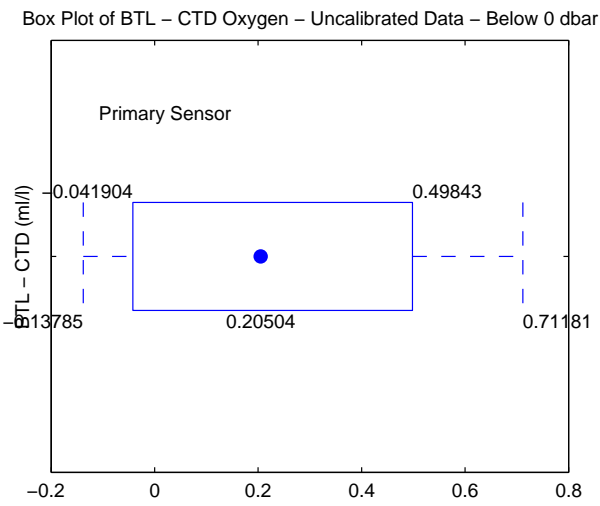
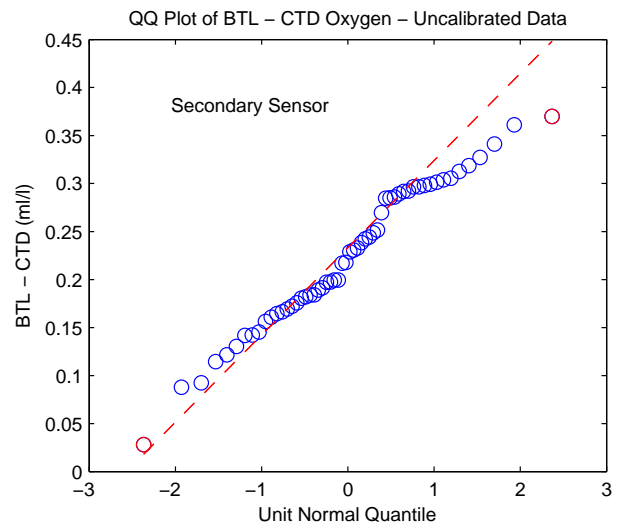
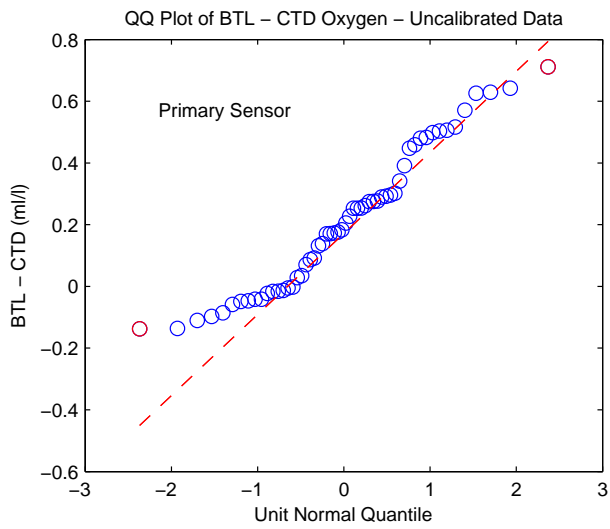


Figure 16: WS0531

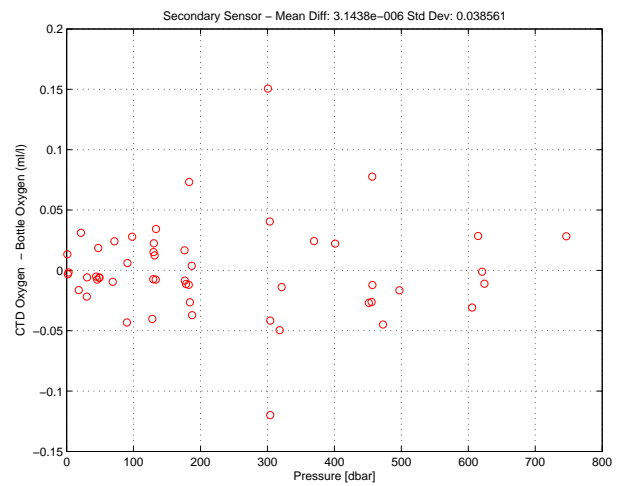
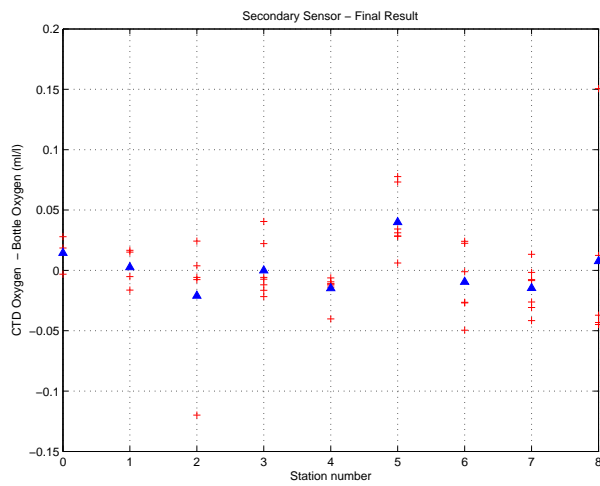
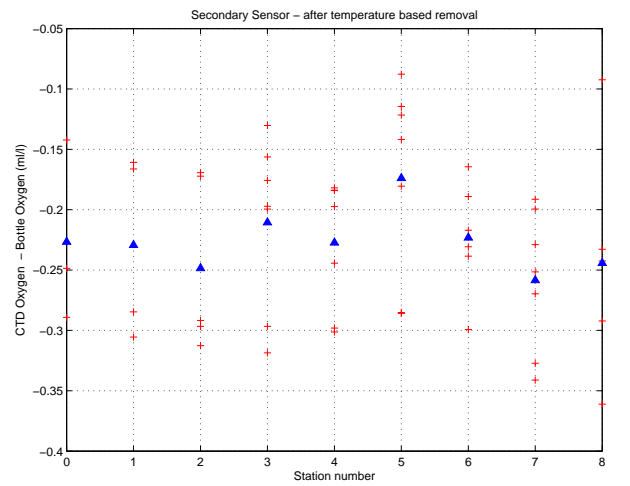
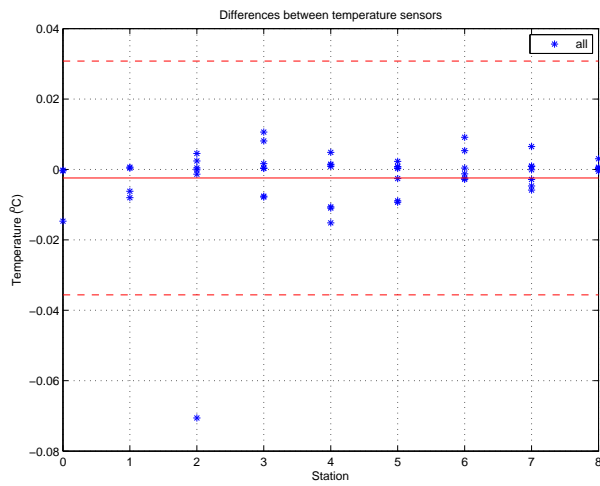
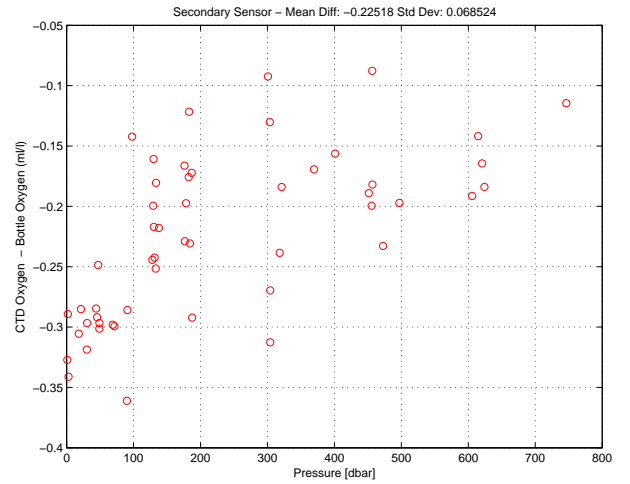
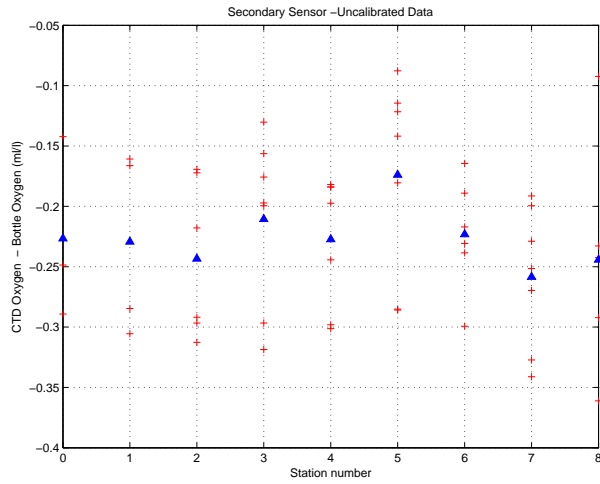


Figure 17: WS0531. Oxygen Calibration

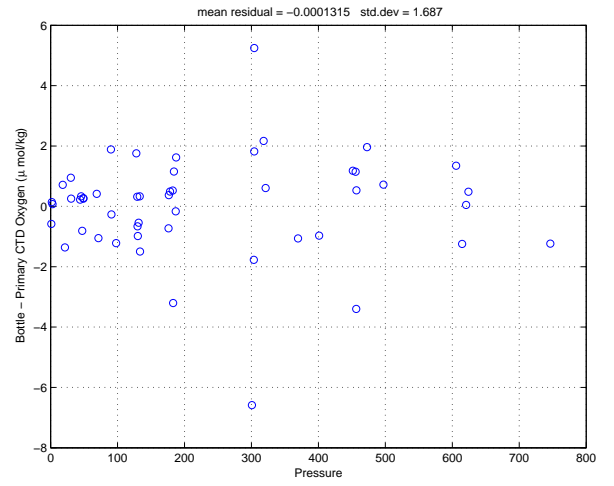
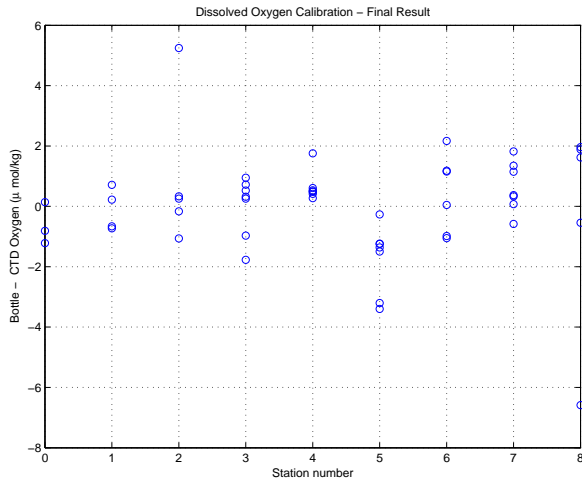


Figure 18: WS0531. Oxygen Calibration (cont.)

Florida Straits R/V FG Walton Smith
 CTD Station 0 (CTD000)
 Latitude 27.004 N Longitude 79.930 W
 15-Dec-2005 19:46 Z

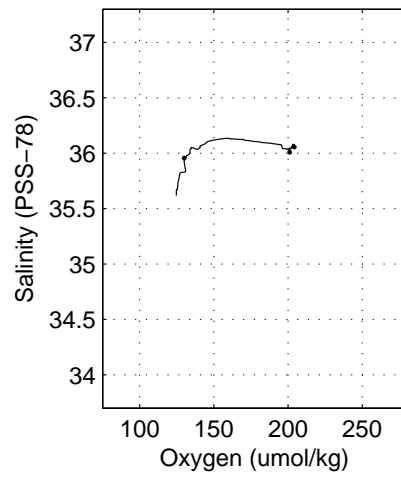
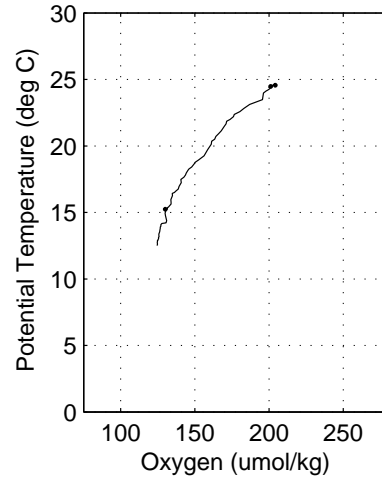
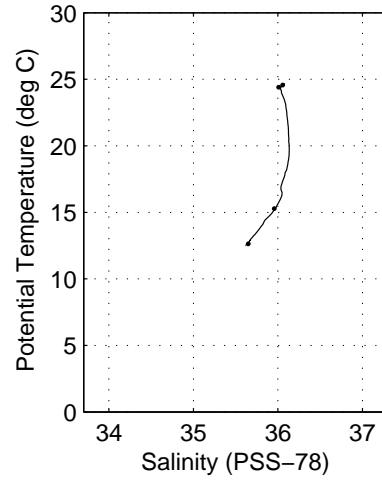
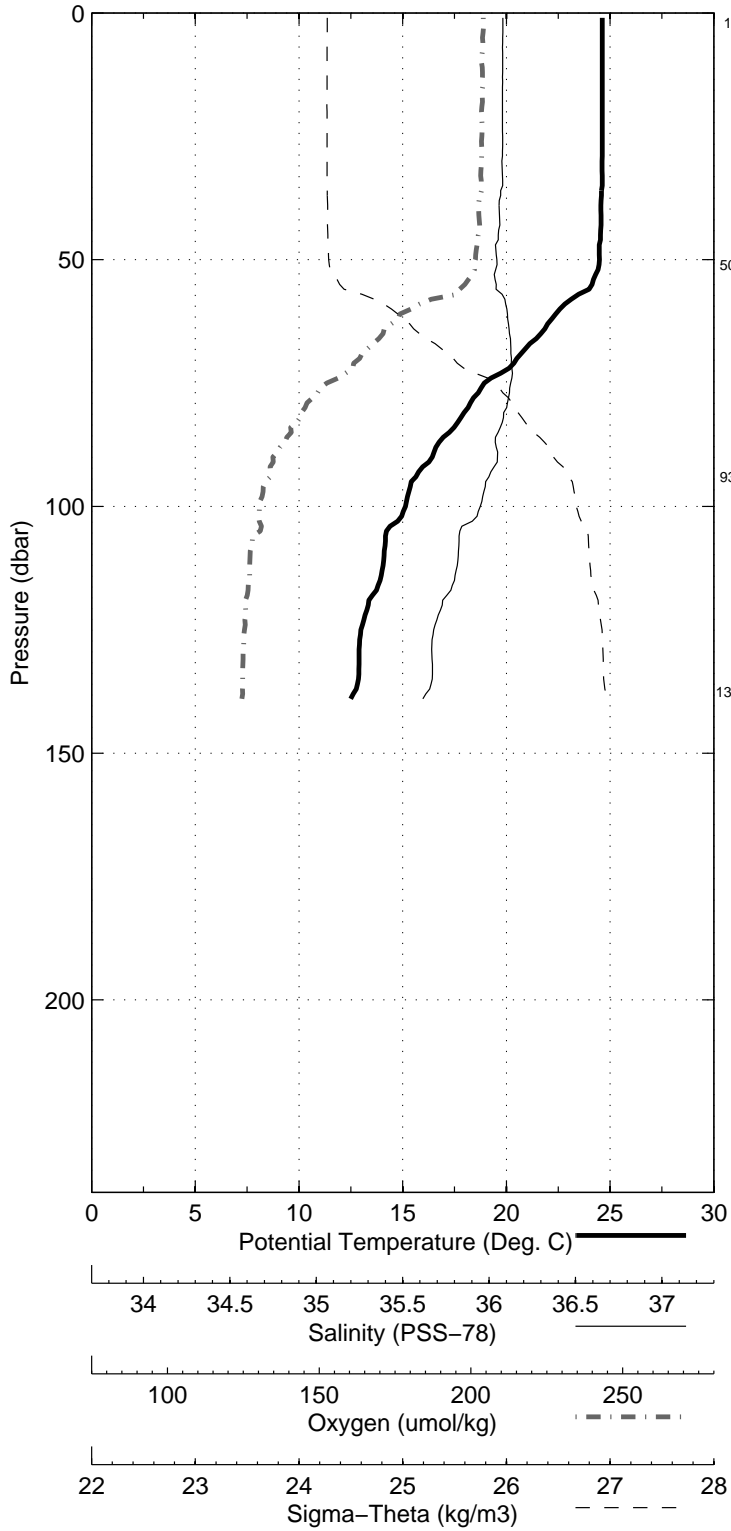


Figure 19: WS0531

Florida Straits R/V FG Walton Smith
 CTD Station 1 (CTD001)
 Latitude 27.003 N Longitude 79.870 W
 15-Dec-2005 17:58 Z

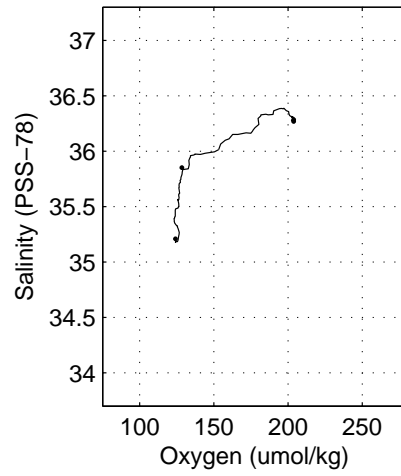
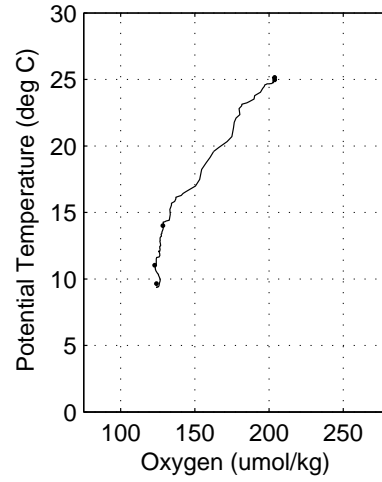
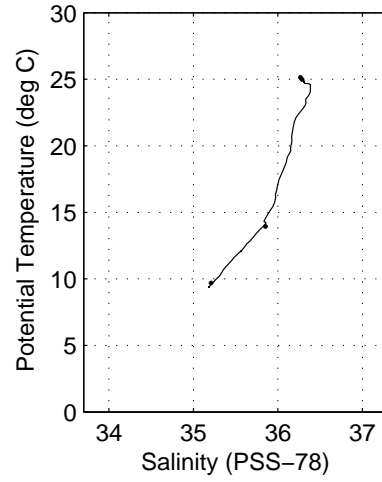
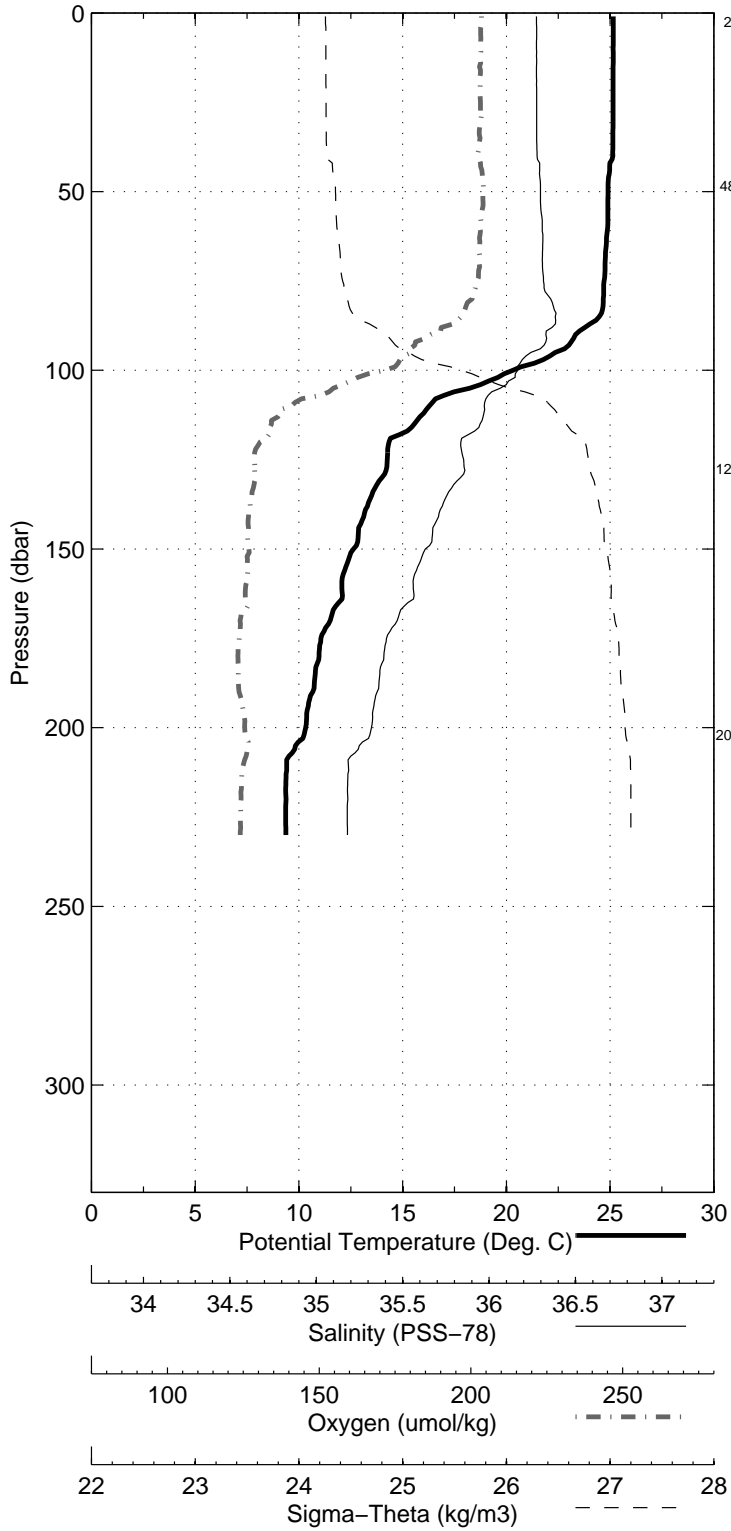


Figure 20: WS0531

Florida Straits R/V FG Walton Smith
CTD Station 2 (CTD002)
Latitude 27.003 N Longitude 79.784 W
15-Dec-2005 16:12 Z

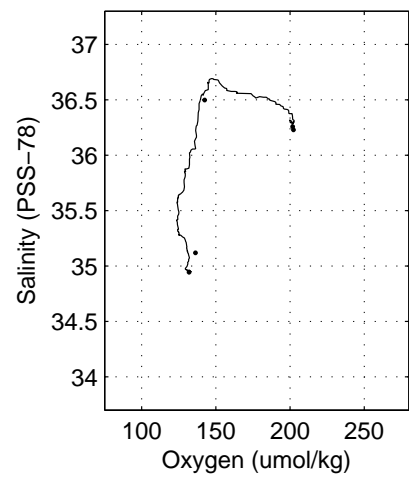
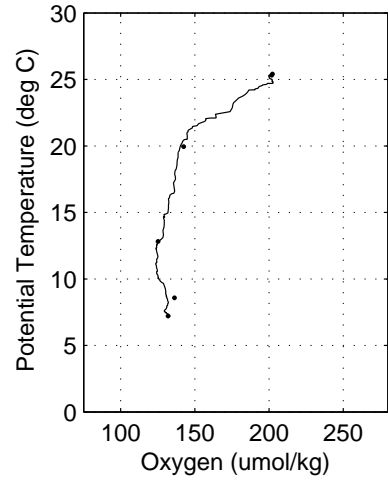
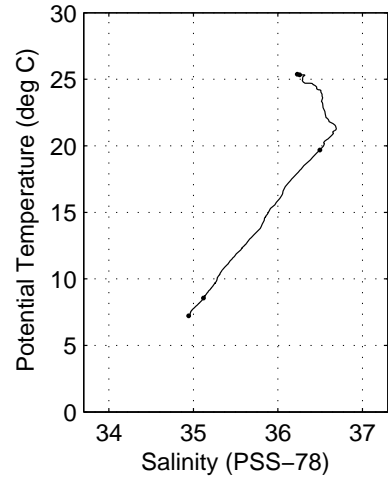
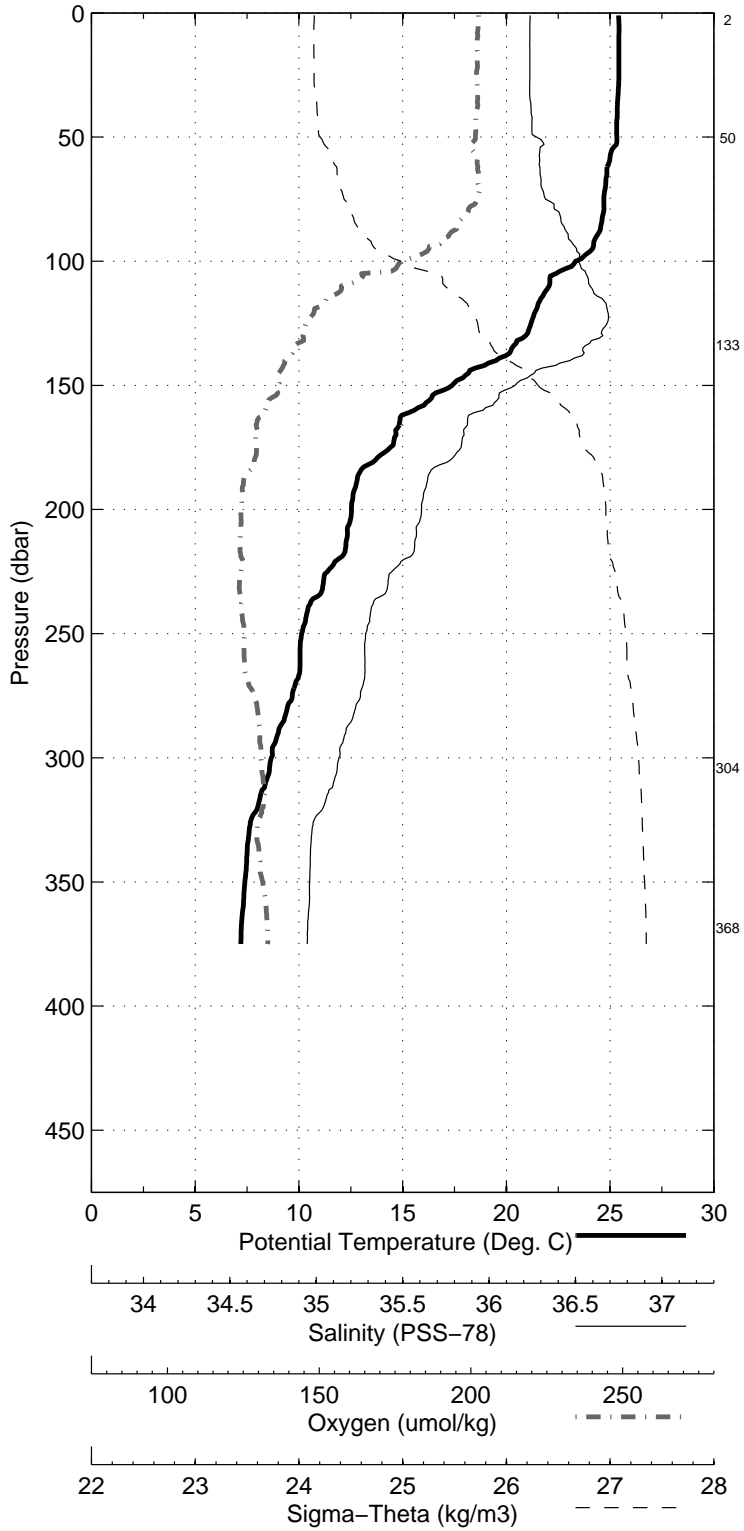


Figure 21: WS0531

Florida Straits R/V FG Walton Smith
 CTD Station 3 (CTD003)
 Latitude 27.003 N Longitude 79.685 W
 15-Dec-2005 14:07 Z

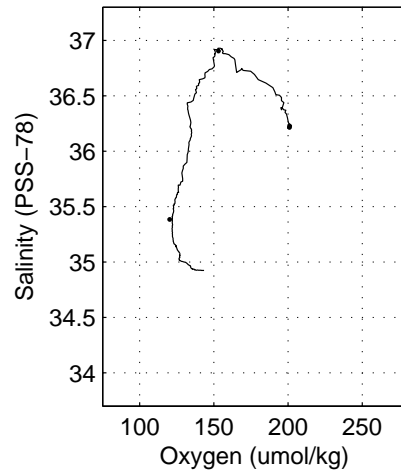
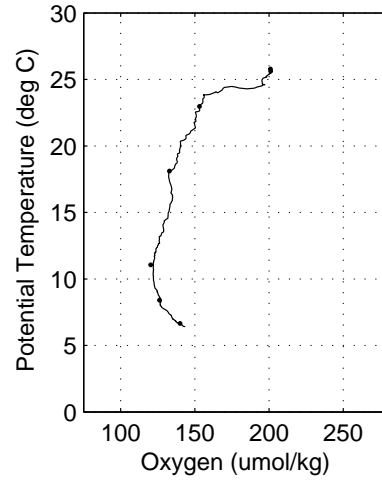
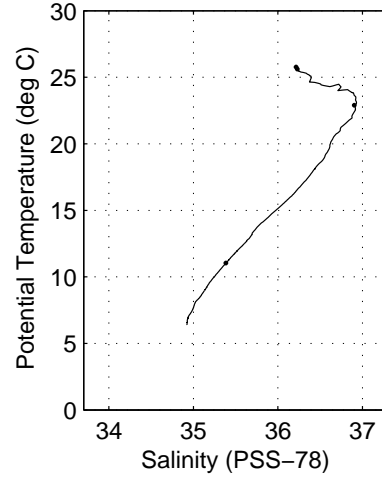
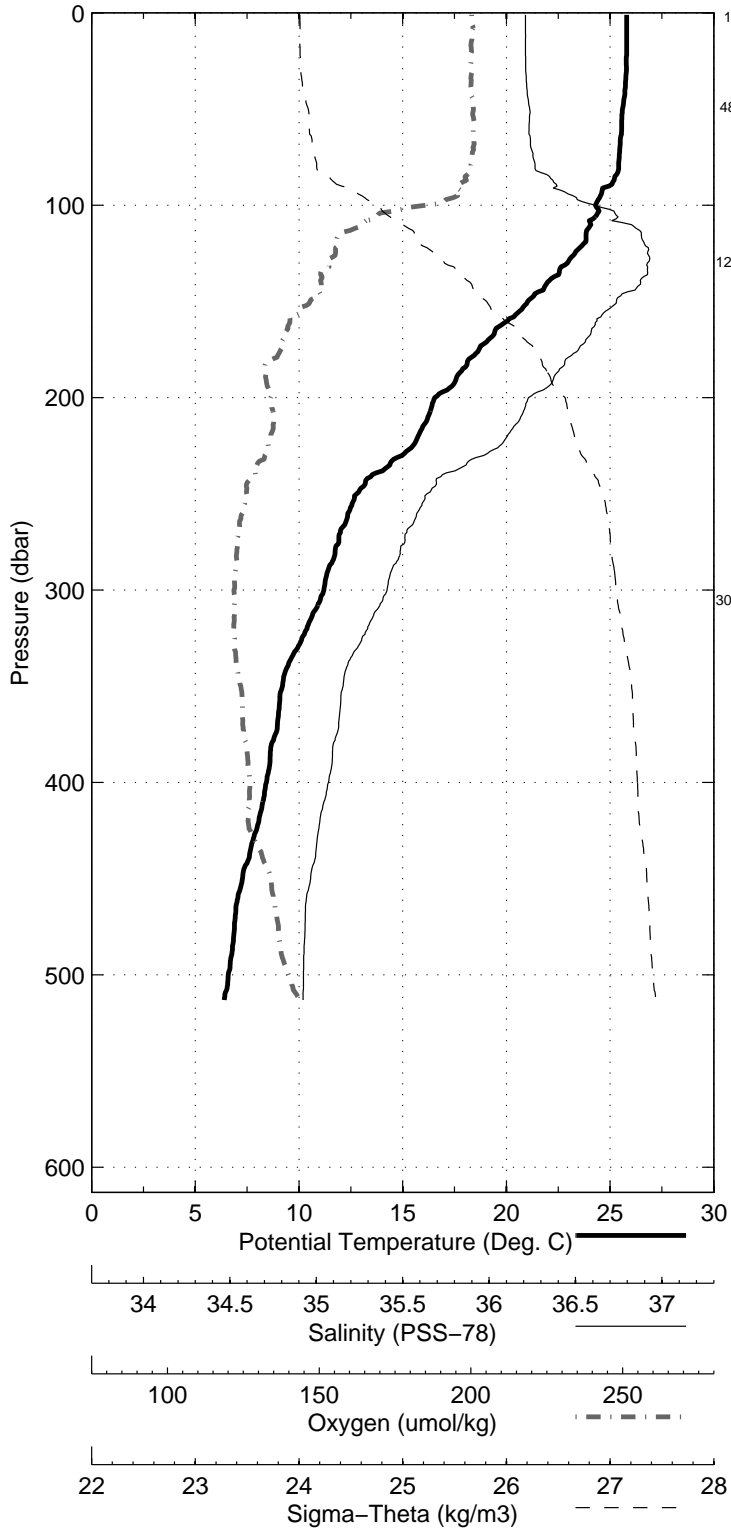


Figure 22: WS0531

Florida Straits R/V FG Walton Smith
 CTD Station 4 (CTD004)
 Latitude 27.003 N Longitude 79.618 W
 15-Dec-2005 11:49 Z

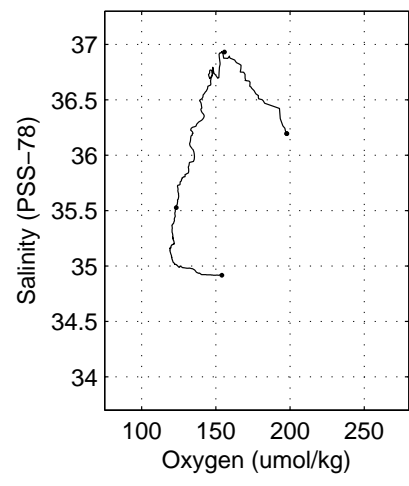
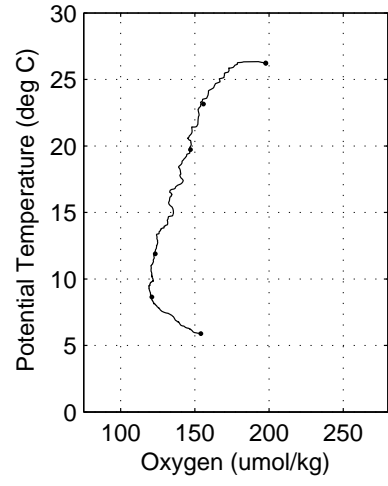
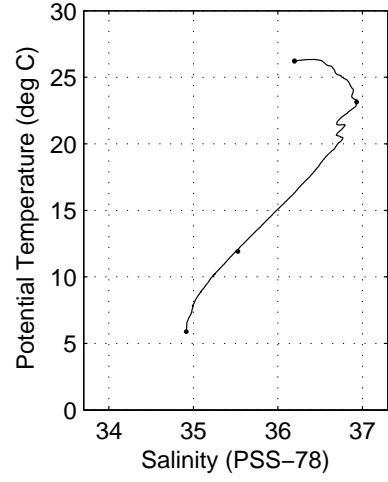
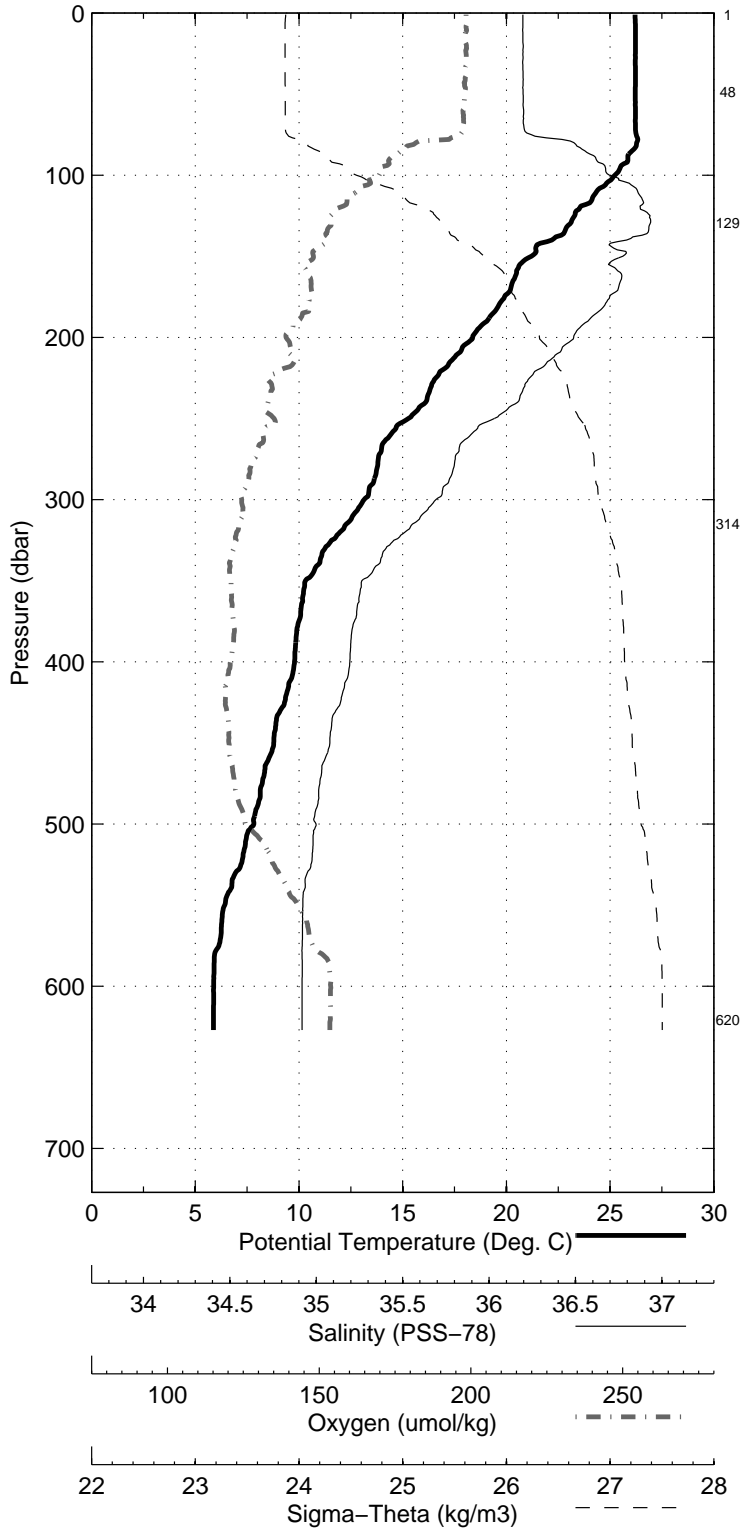


Figure 23: WS0531

Florida Straits R/V FG Walton Smith
 CTD Station 5 (CTD005)
 Latitude 27.002 N Longitude 79.501 W
 15-Dec-2005 09:59 Z

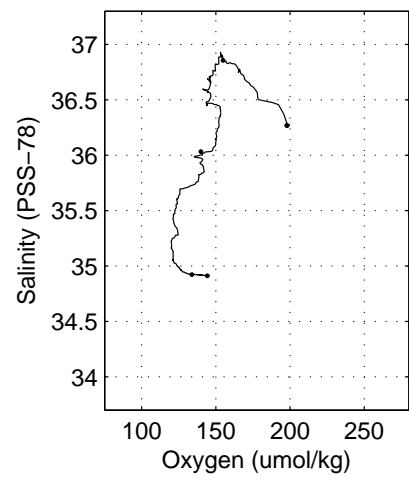
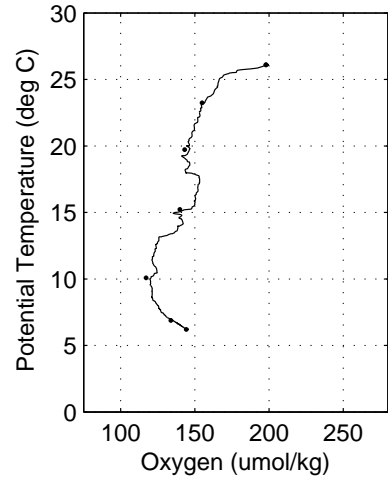
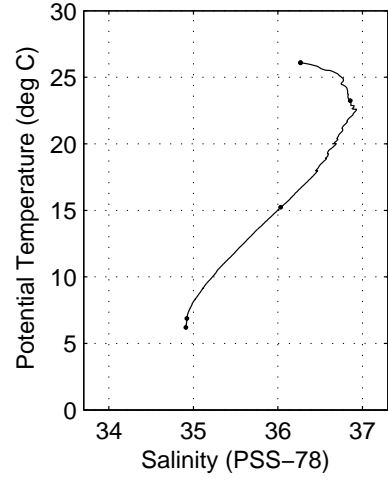
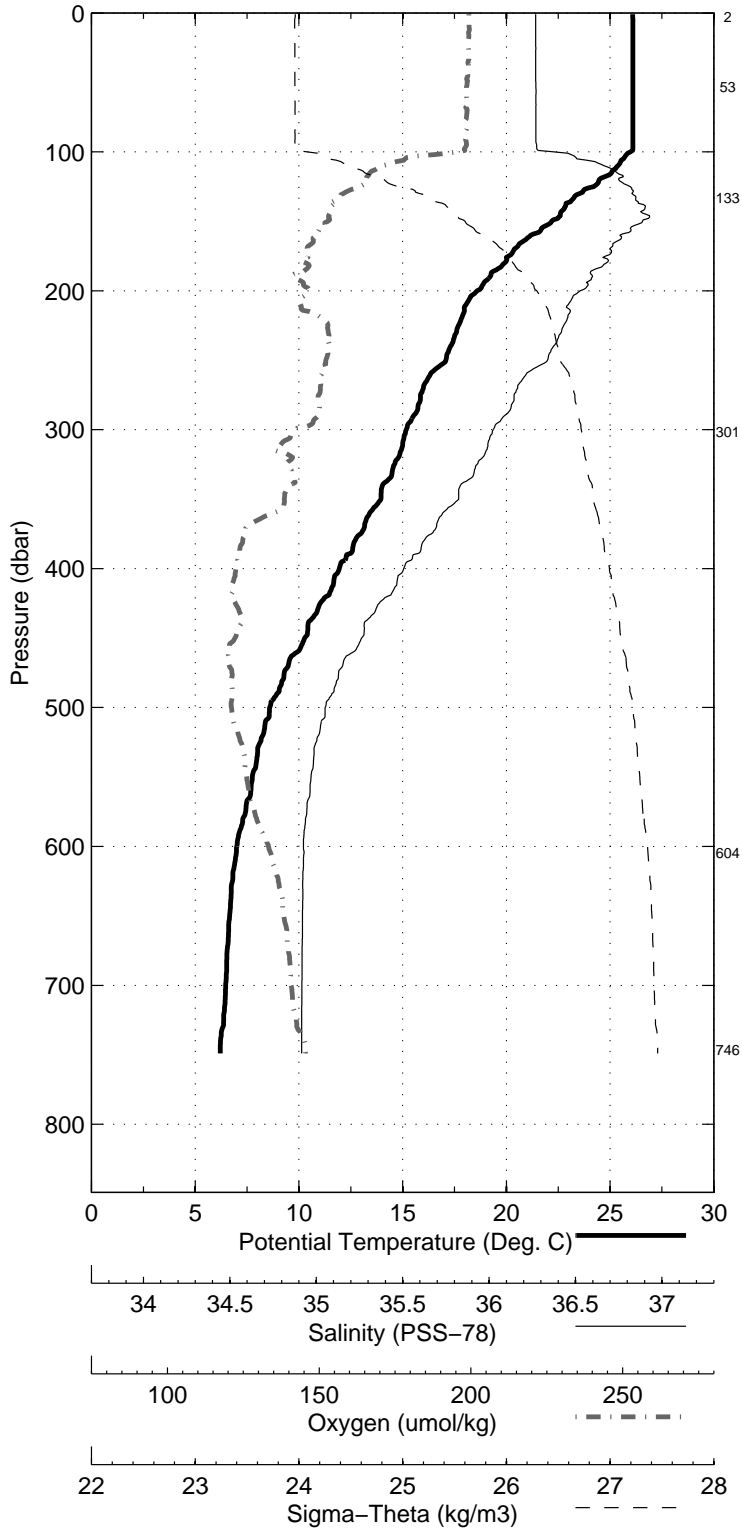


Figure 24: WS0531

Florida Straits R/V FG Walton Smith
 CTD Station 6 (CTD006)
 Latitude 27.001 N Longitude 79.383 W
 15-Dec-2005 08:15 Z

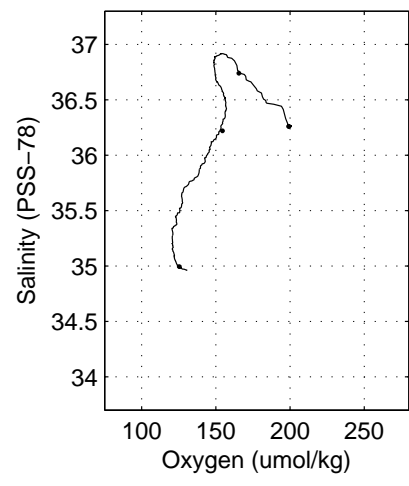
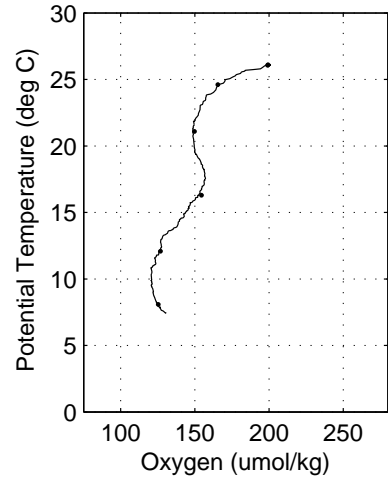
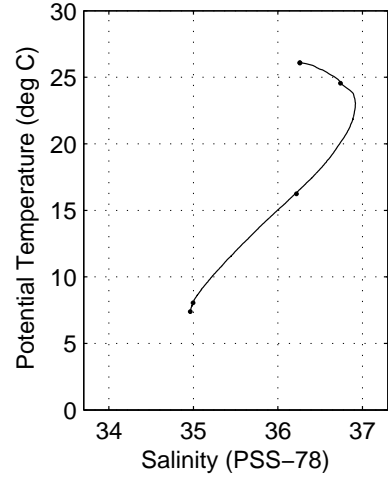
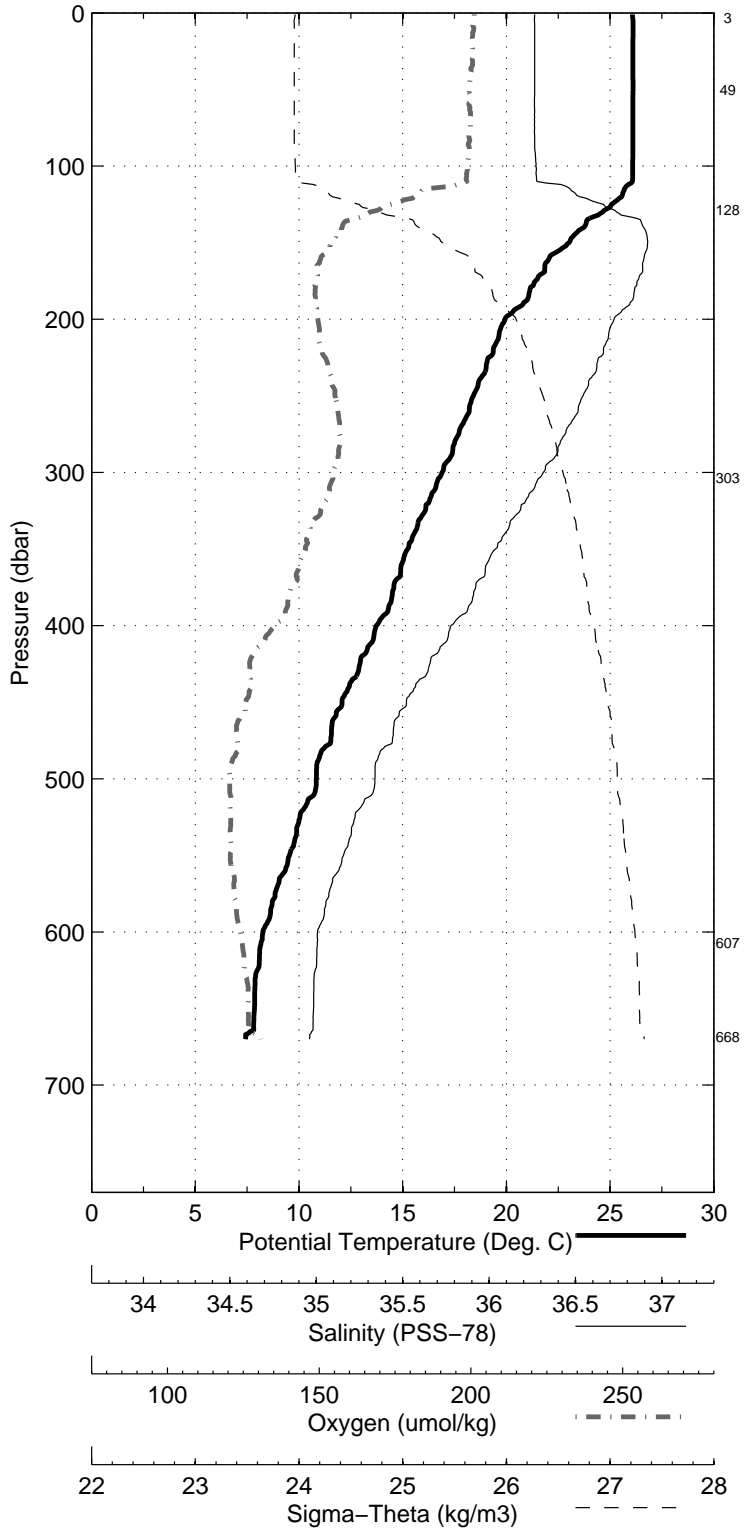


Figure 25: WS0531

Florida Straits R/V FG Walton Smith
CTD Station 7 (CTD007)
Latitude 27.001 N Longitude 79.283 W
15-Dec-2005 06:29 Z

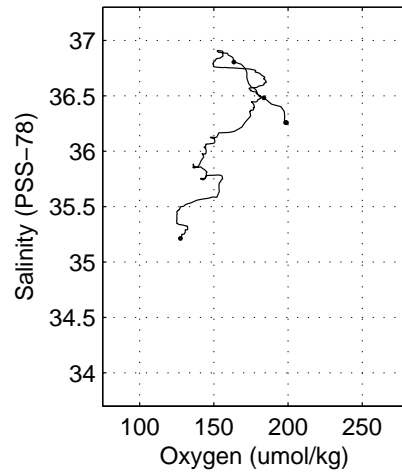
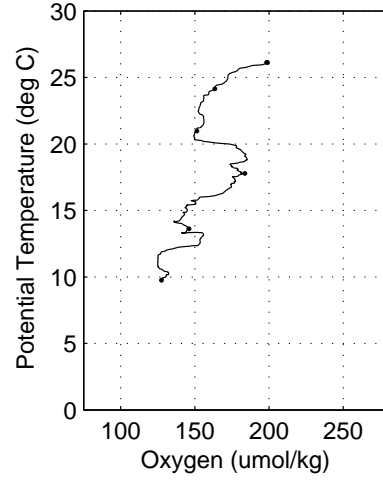
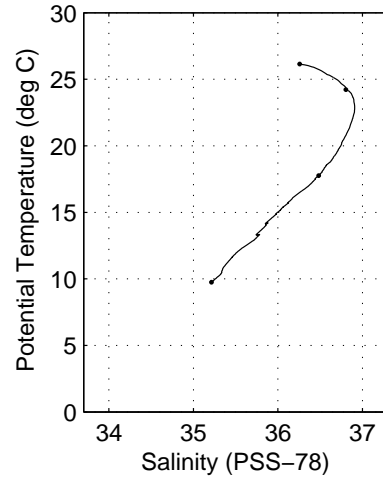
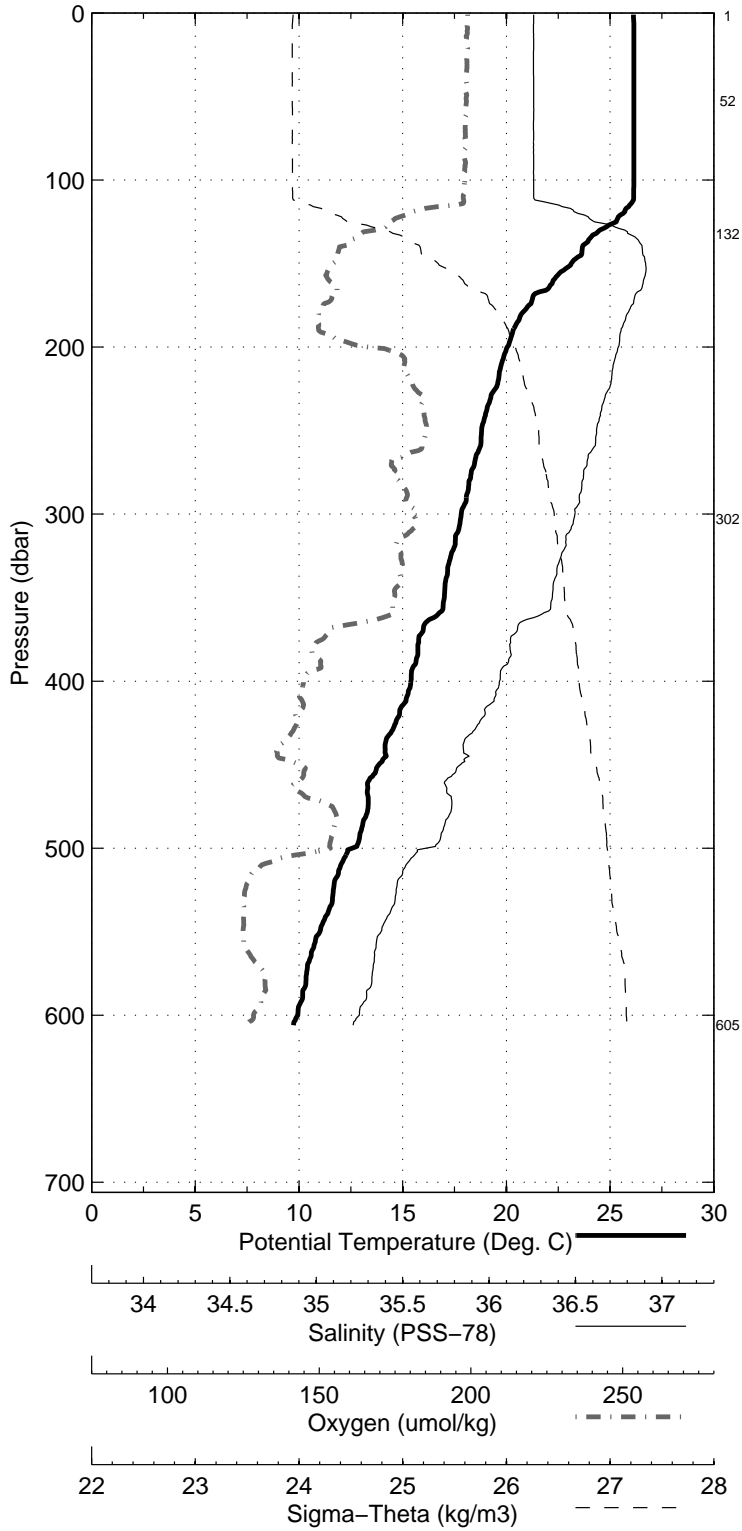


Figure 26: WS0531

Florida Straits R/V FG Walton Smith
CTD Station 8 (CTD008)
Latitude 27.001 N Longitude 79.202 W
15-Dec-2005 05:17 Z

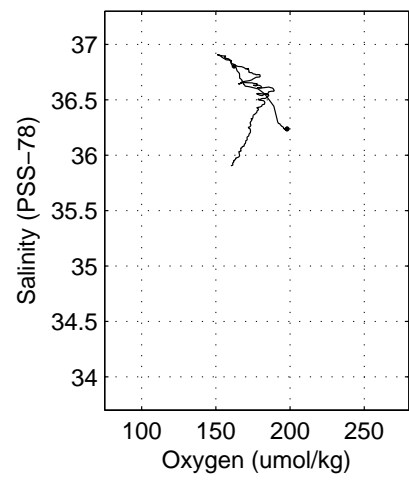
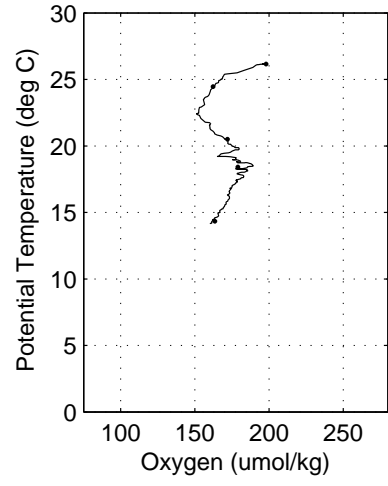
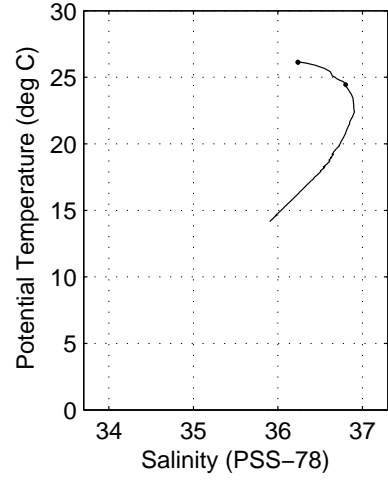
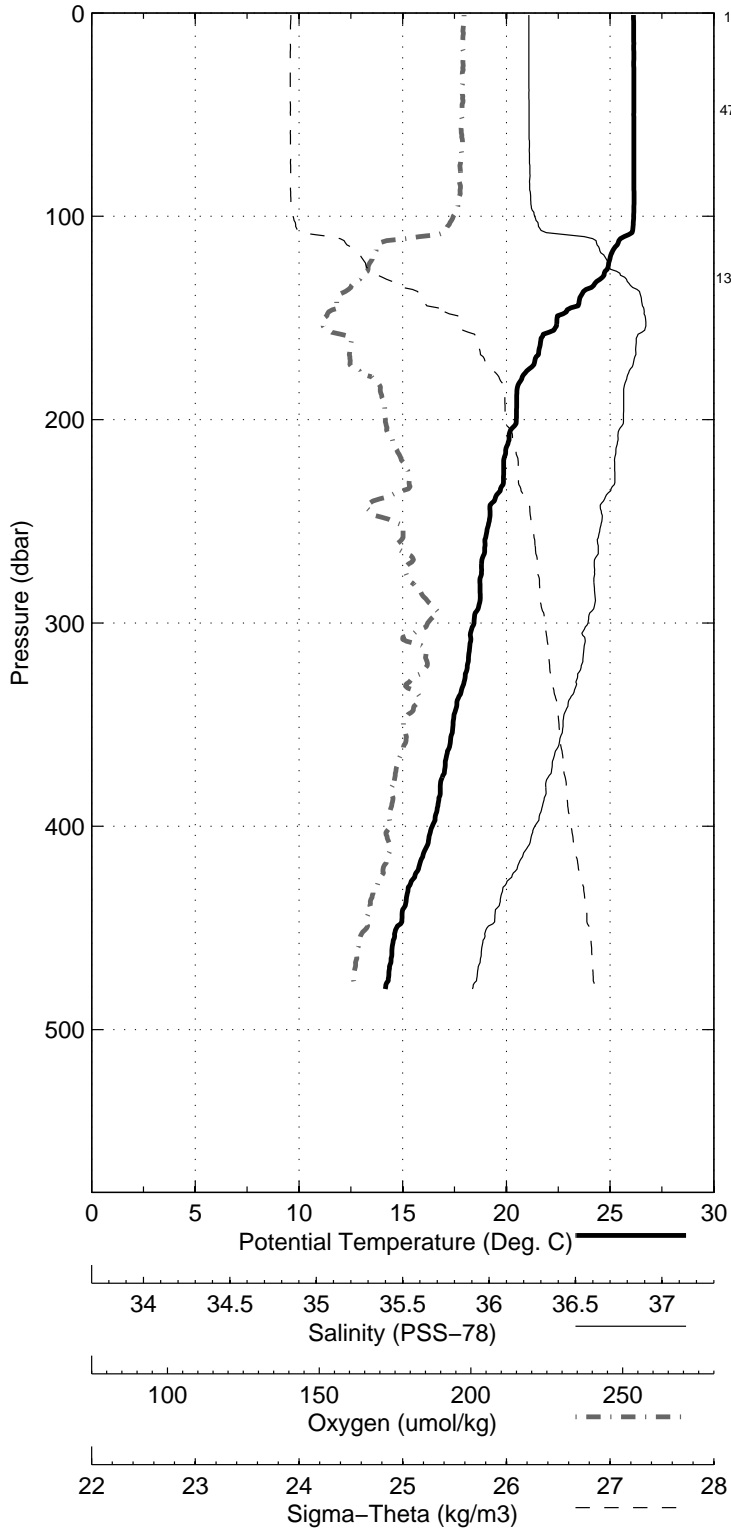


Figure 27: WS0531