

Straits of Florida: CTD data calibration report
NOAA/AOML: Western Boundary Time Series program

Cruise ID: WS0422

Cruise date: August, 2004

Christopher M. Duncombe

Rigoberto F. Garcia

Carlos A. Fonseca

Christopher S. Meinen

Molly O. Baringer

May 8, 2008

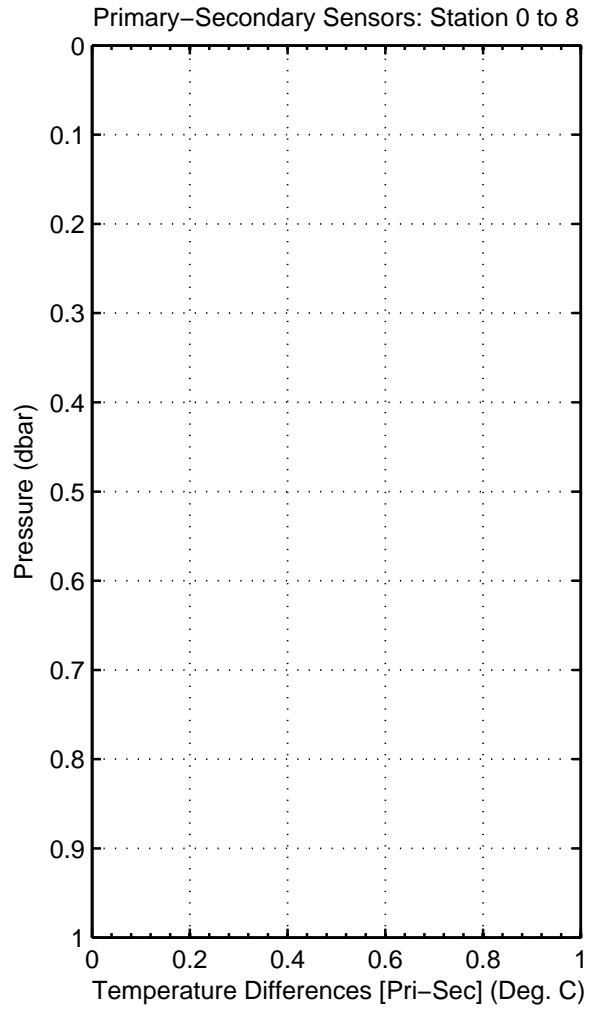
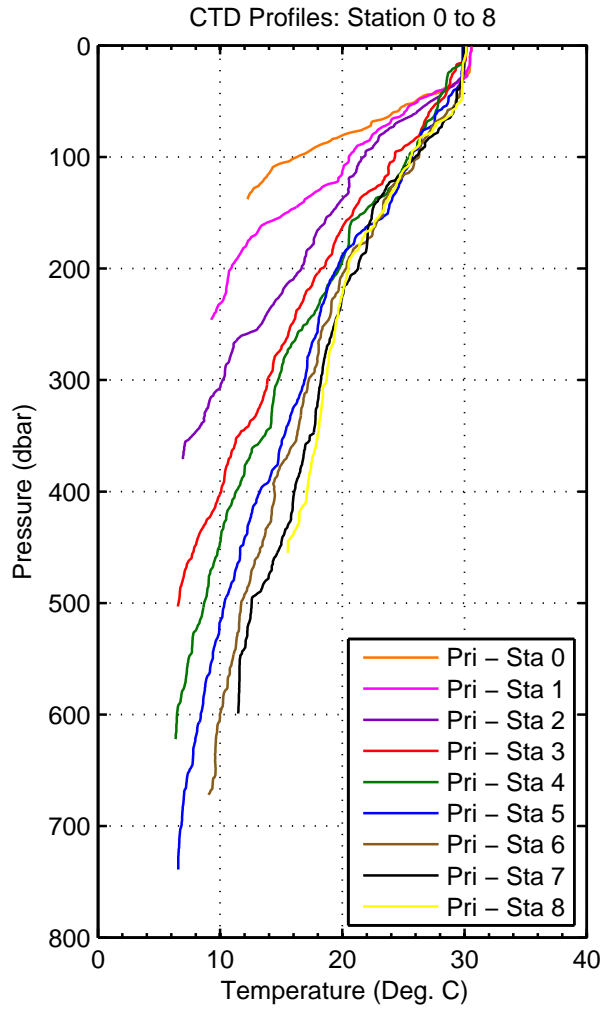


Figure 1: WS0422

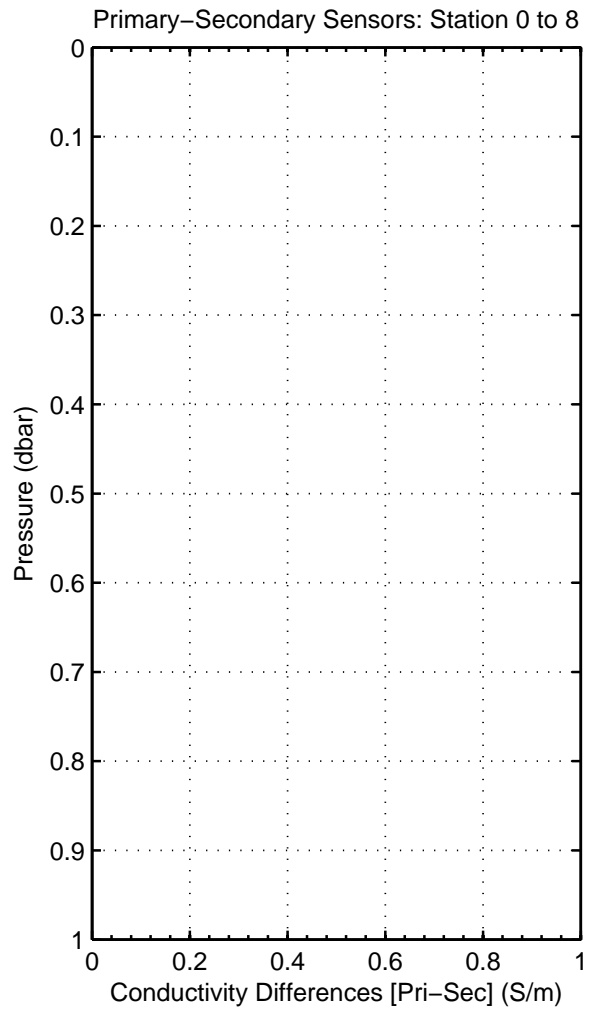
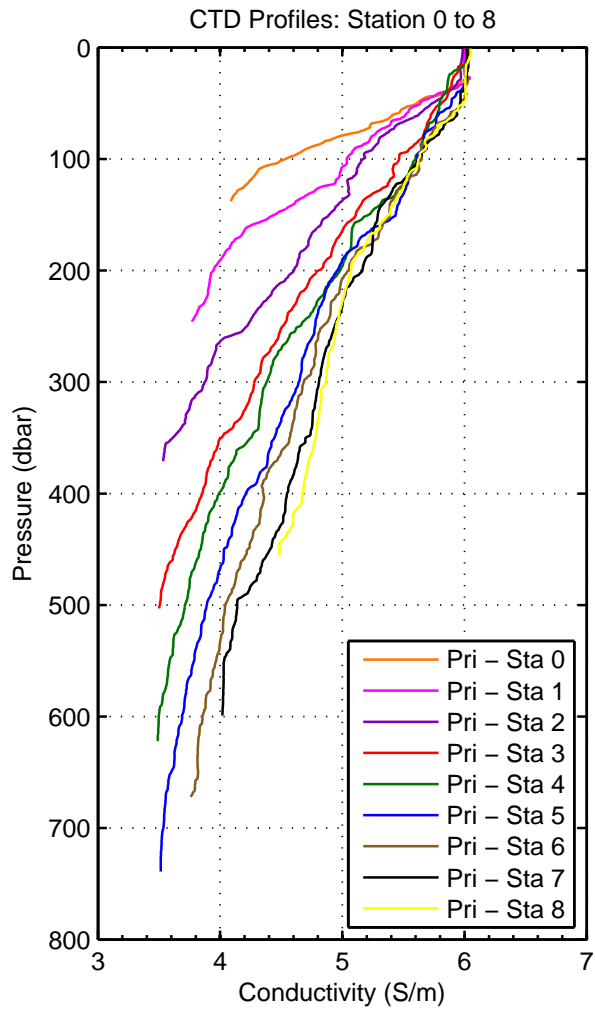


Figure 2: WS0422

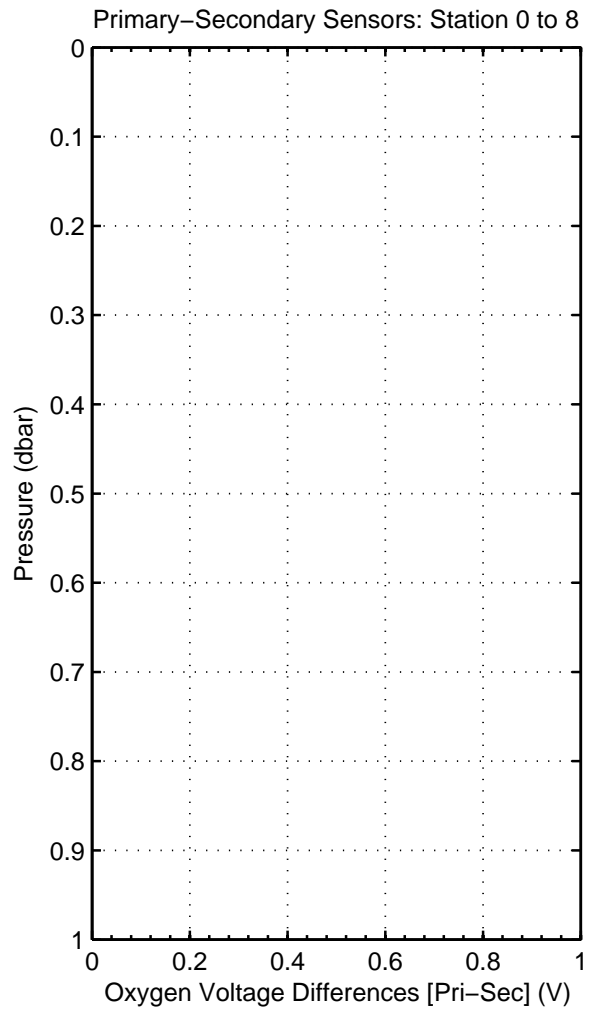
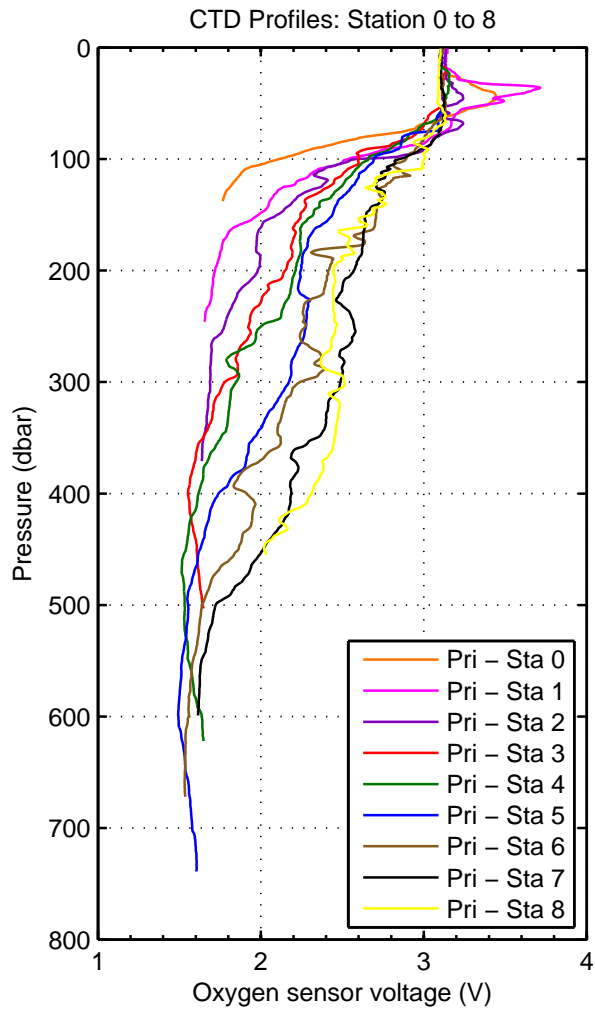


Figure 3: WS0422

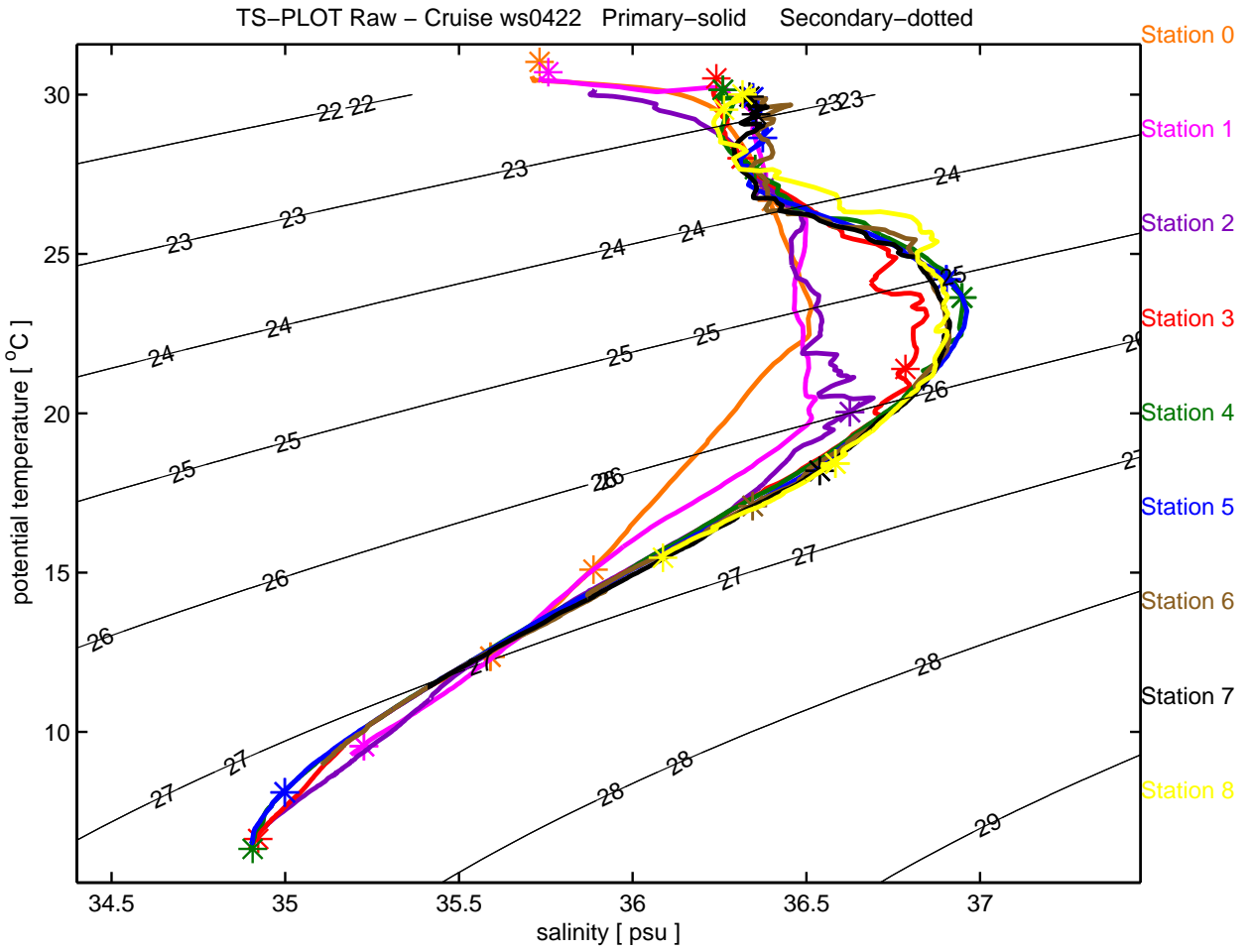


Figure 4: WS0422

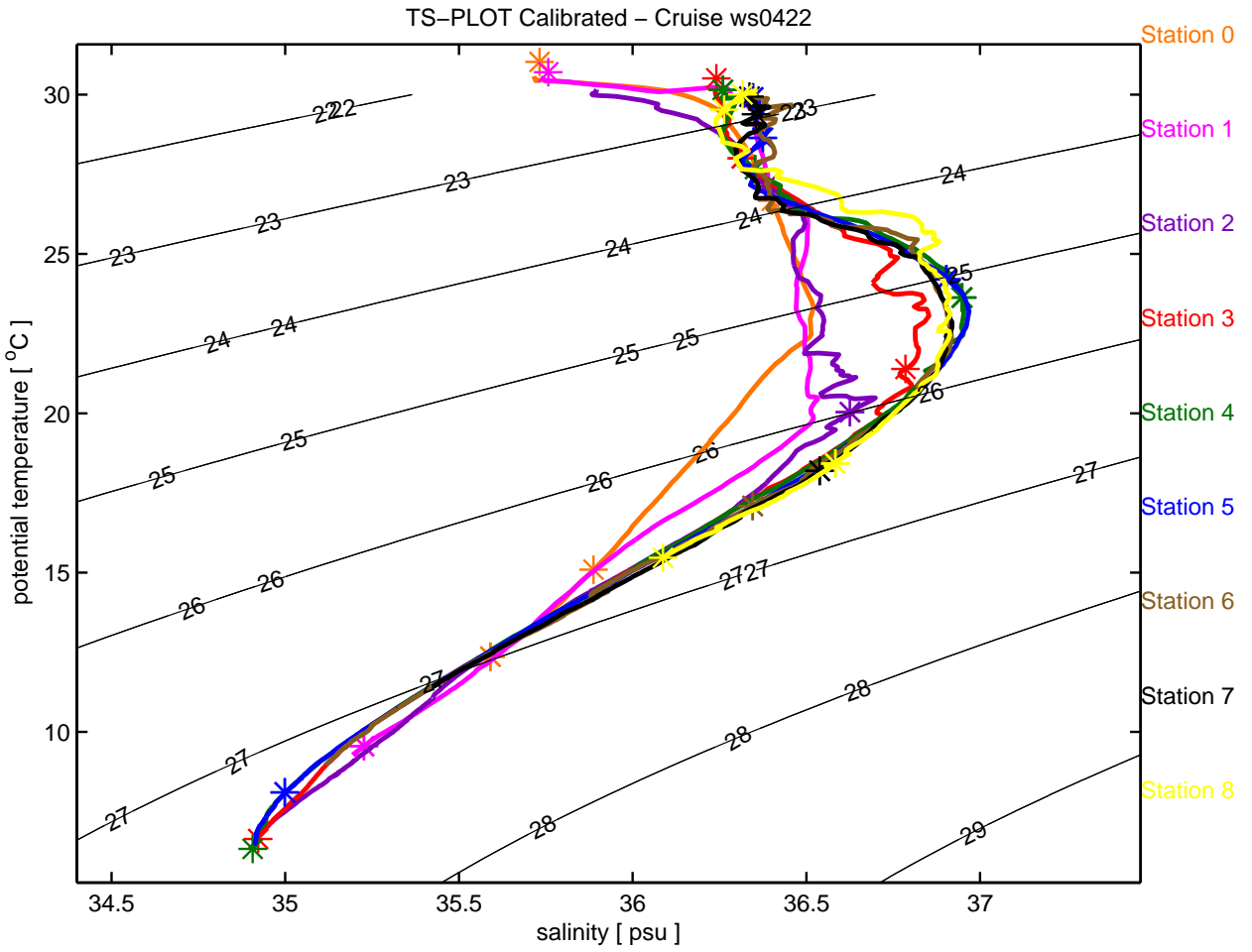


Figure 5: WS0422

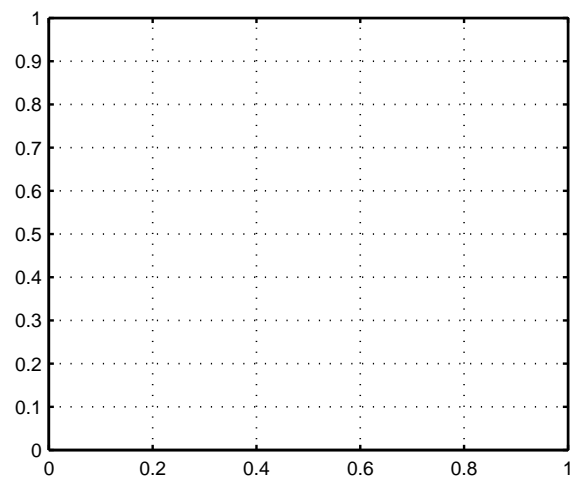
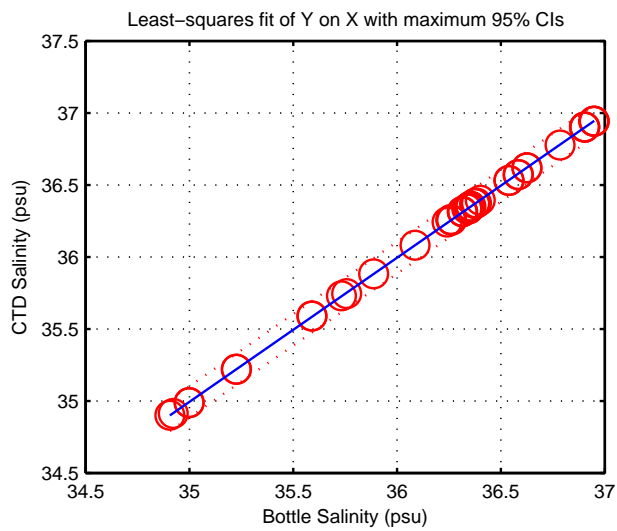
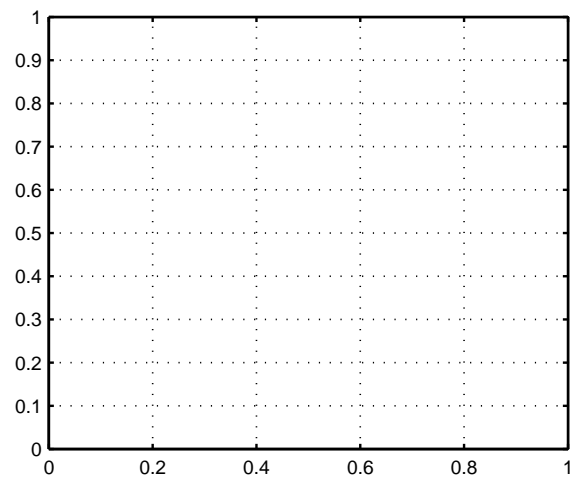
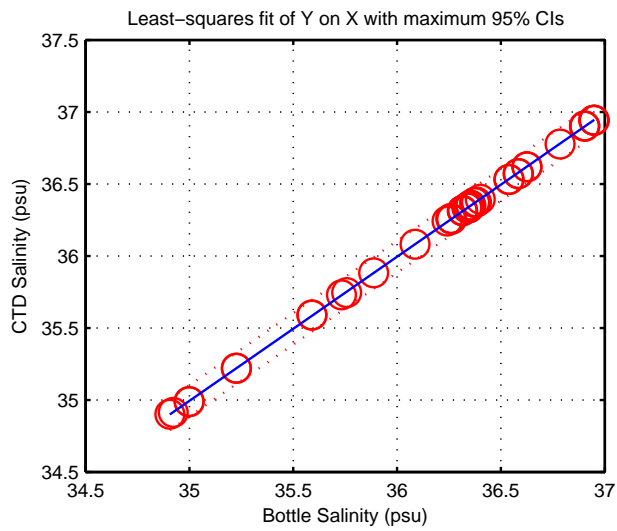
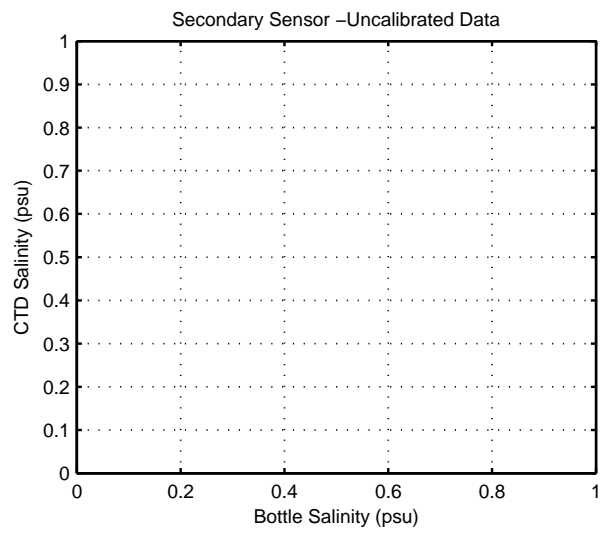
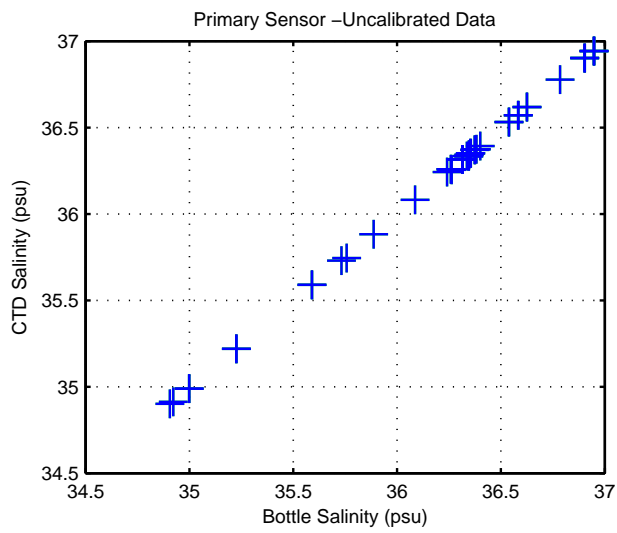


Figure 6: WS0422

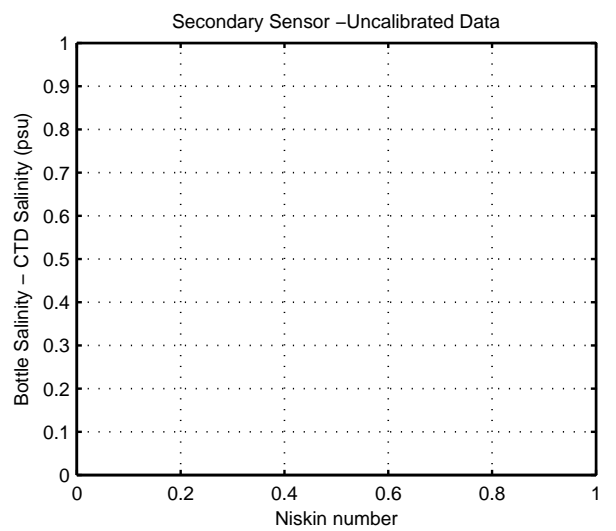
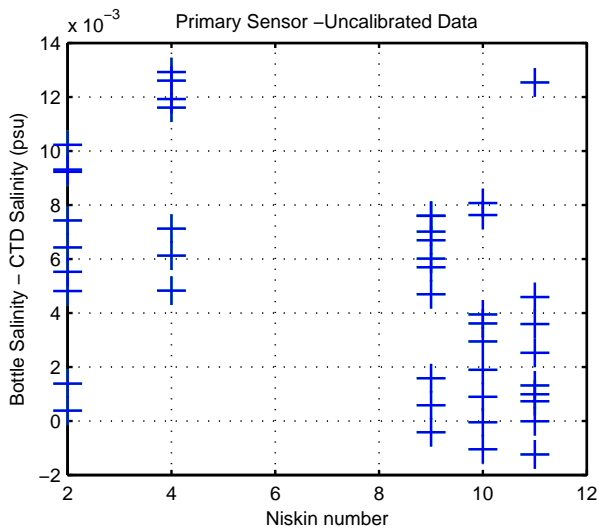
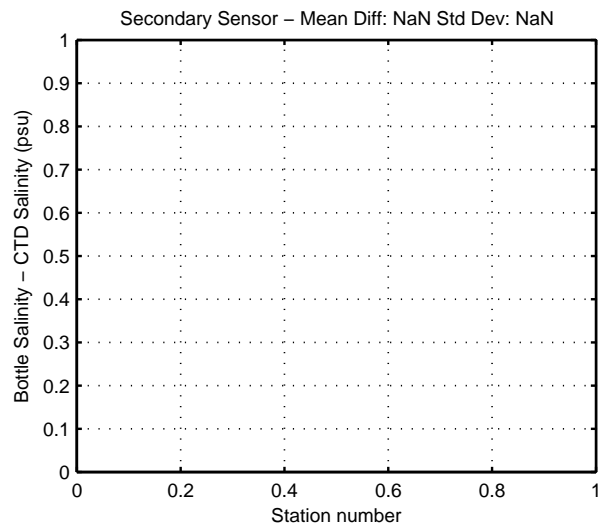
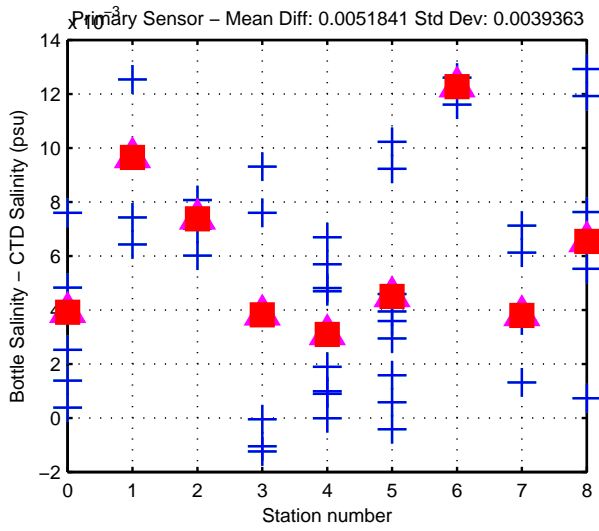
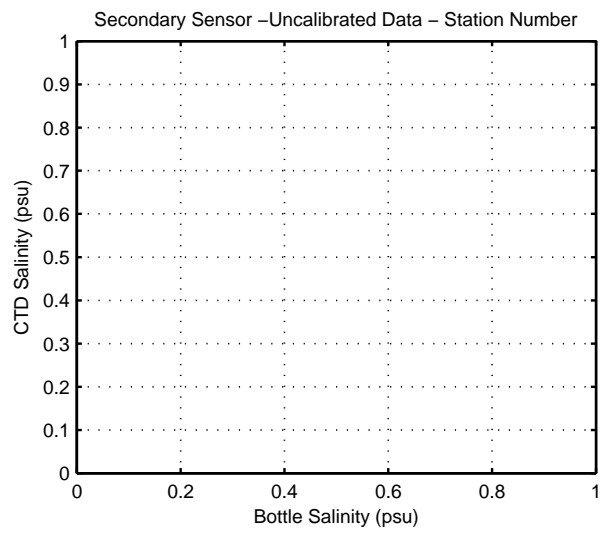
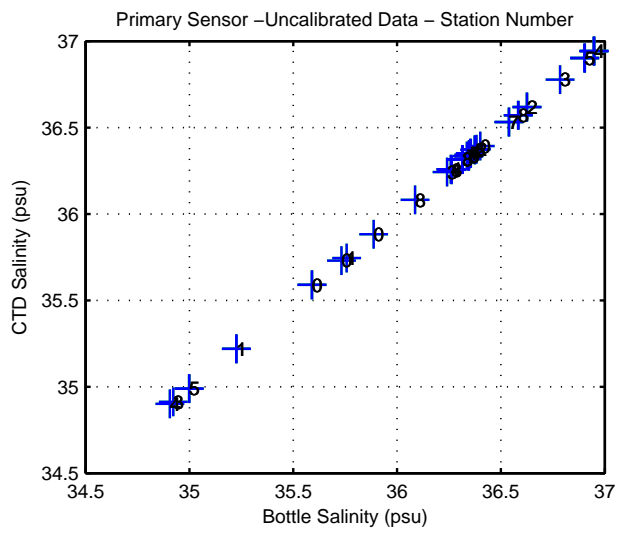


Figure 7: WS0422

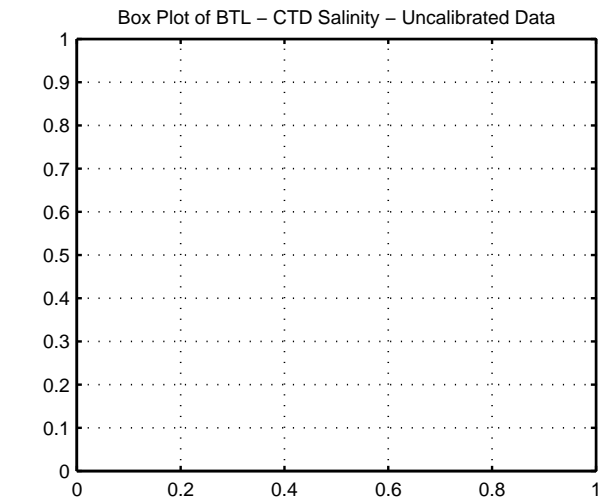
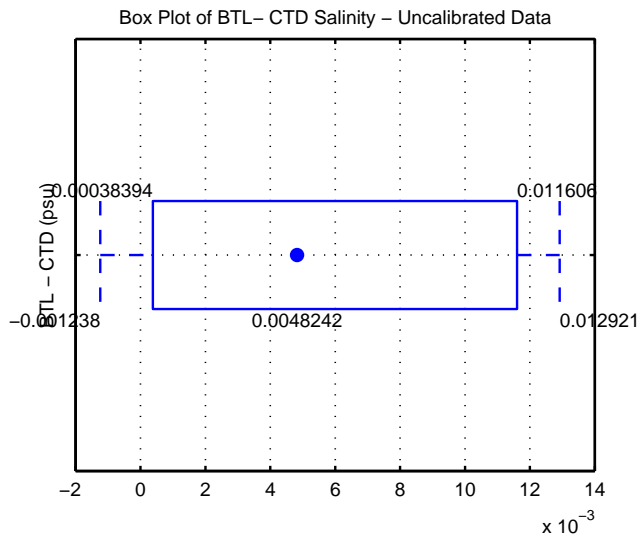
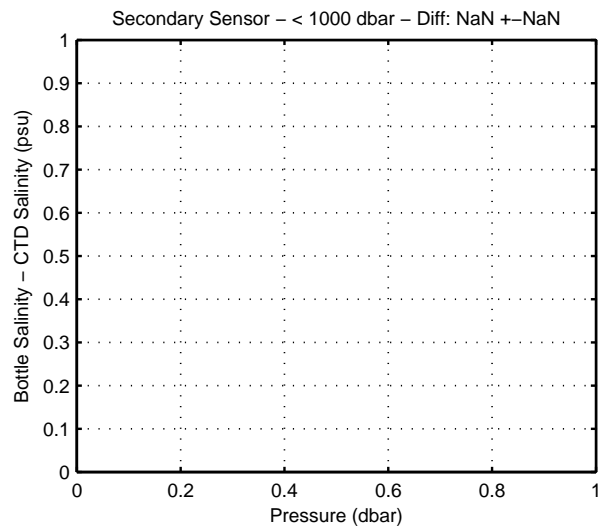
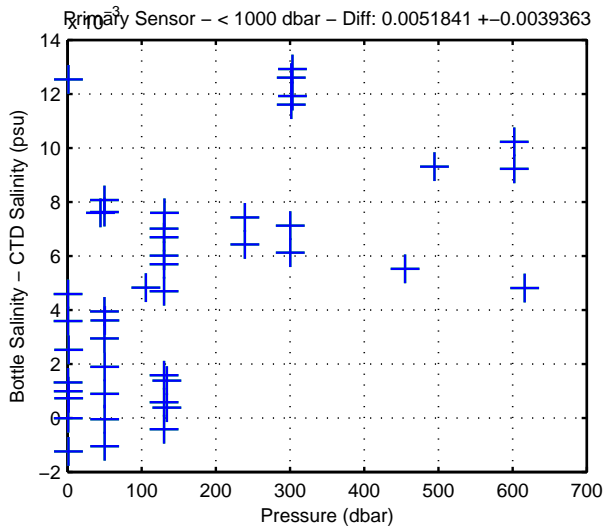
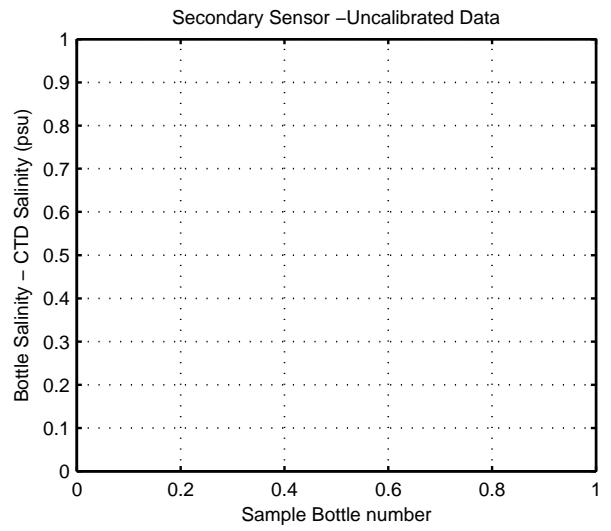
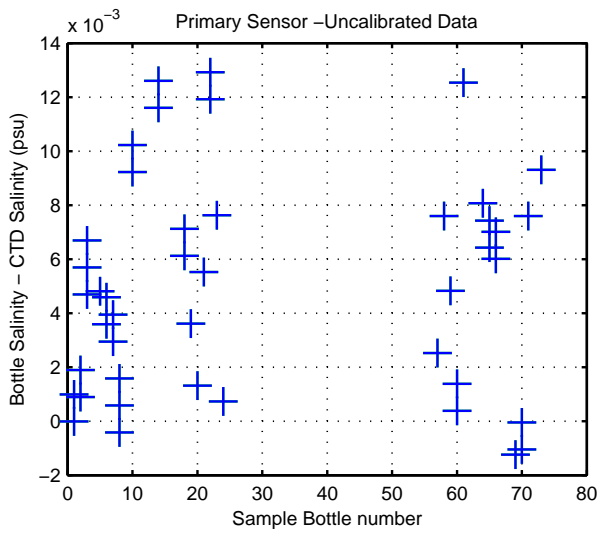


Figure 8: WS0422

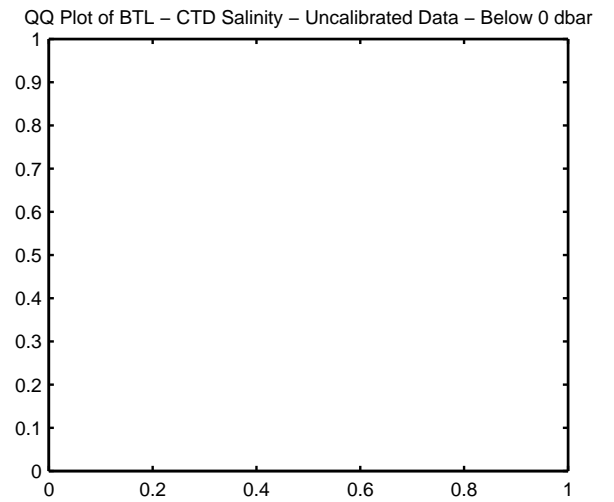
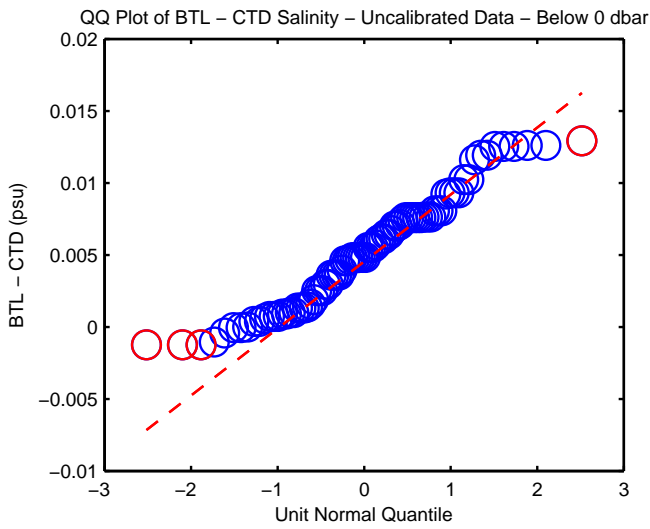
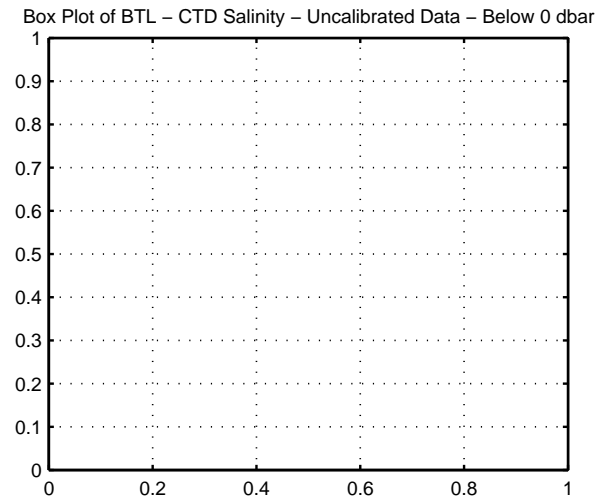
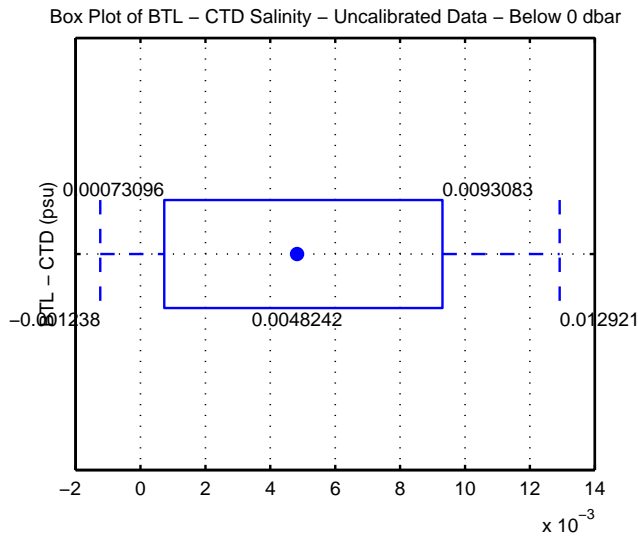
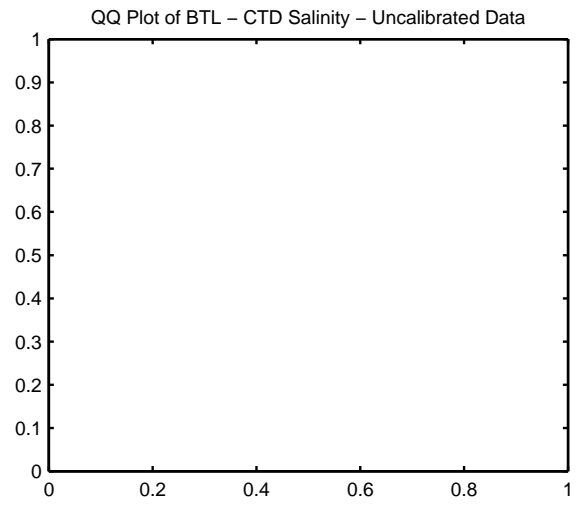
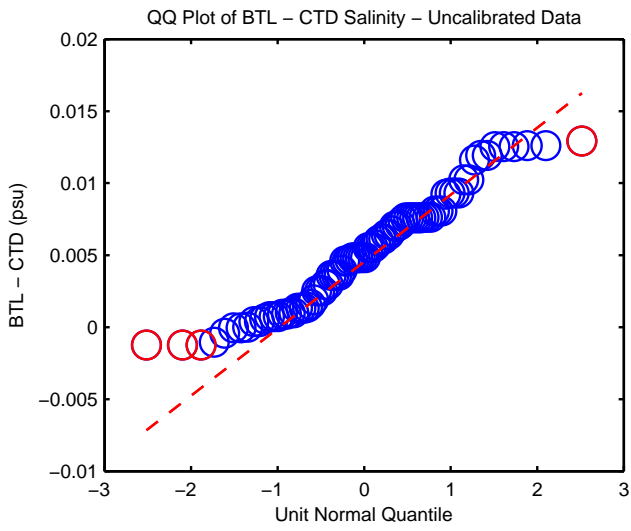


Figure 9: WS0422

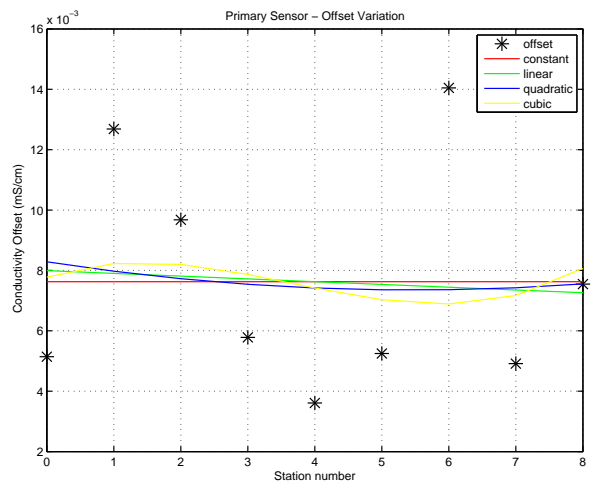
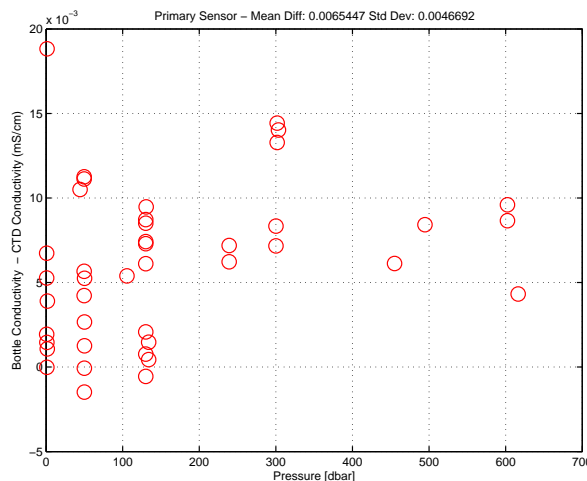
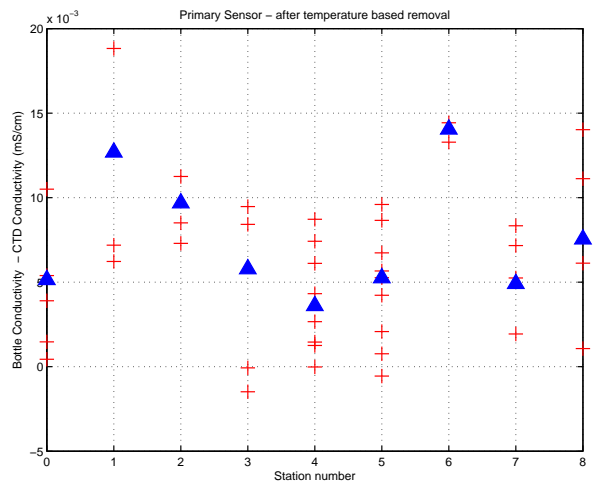
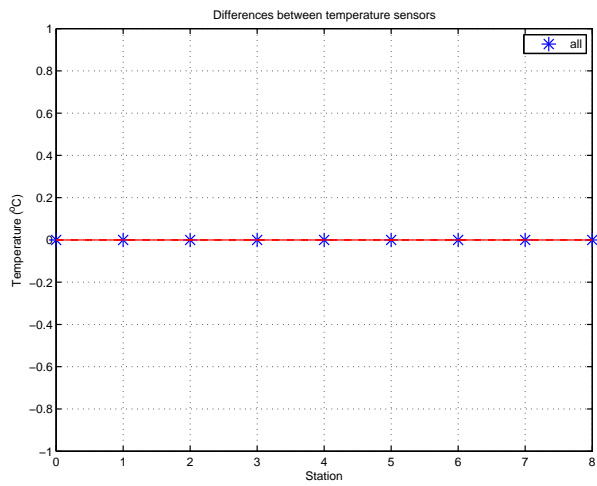
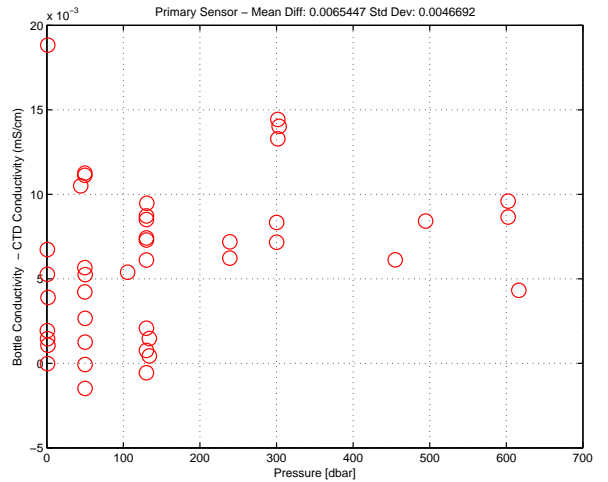
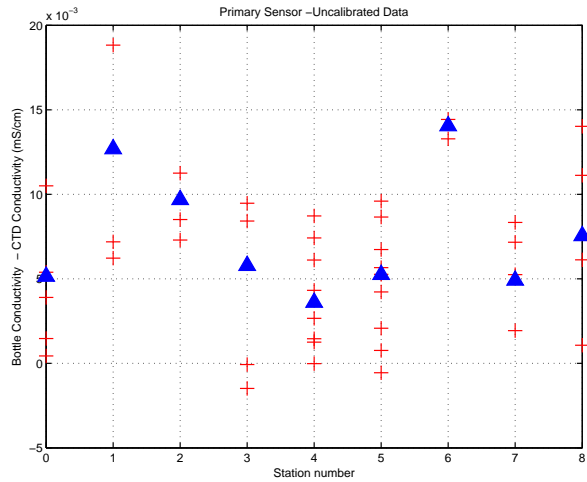


Figure 10: WS0422. Conductivity Calibration

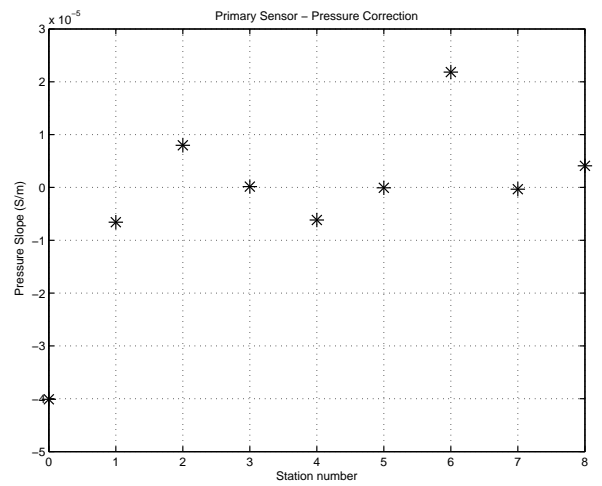
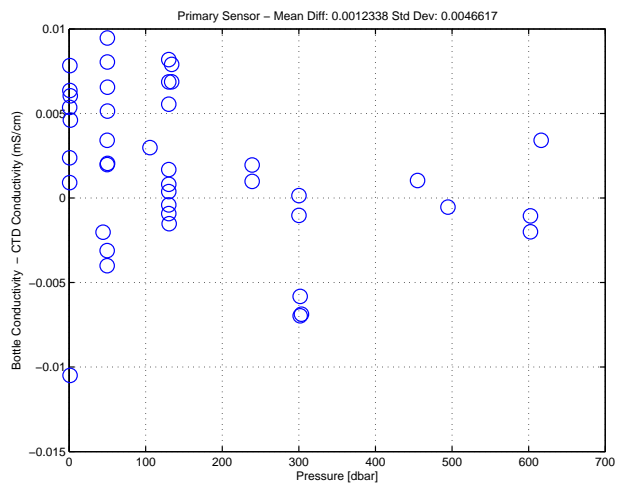
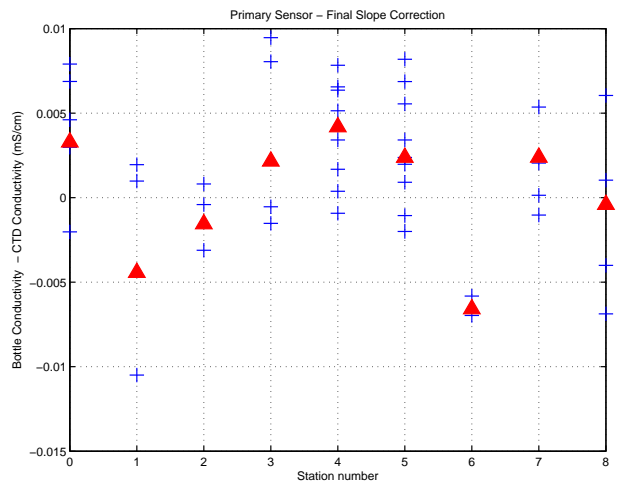
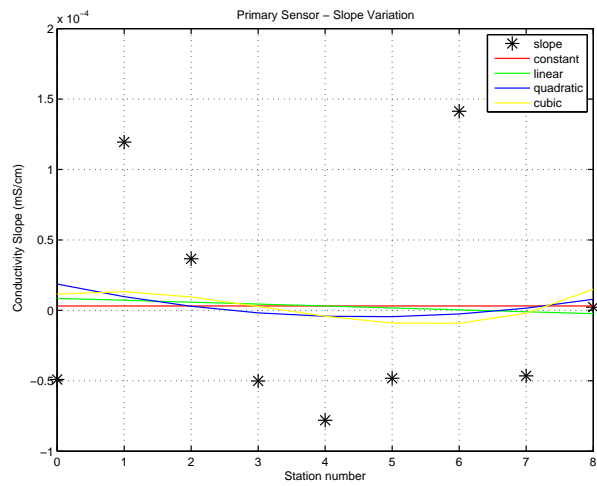
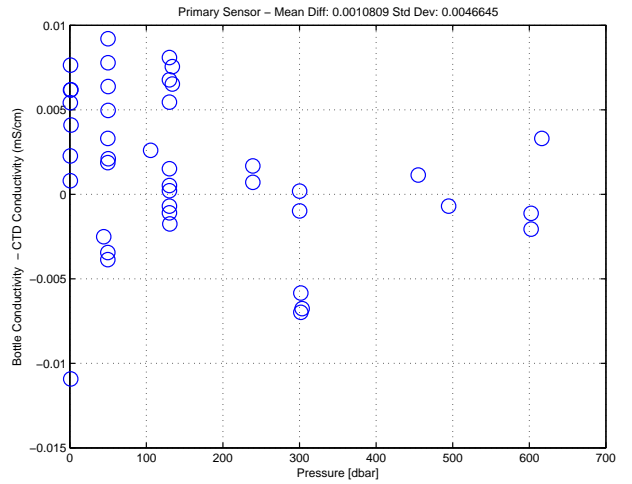
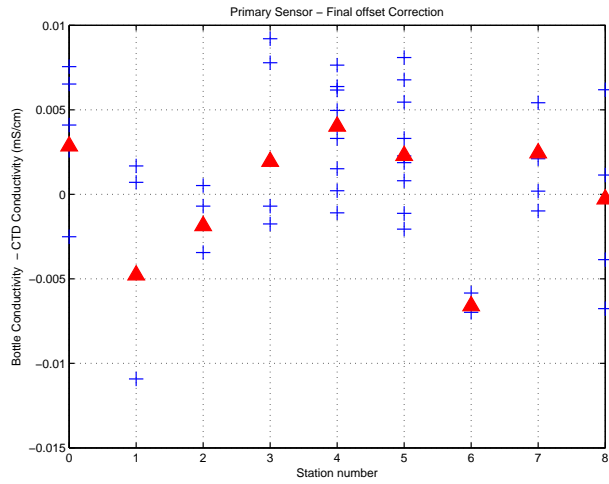


Figure 11: WS0422. Conductivity Calibration (cont.)

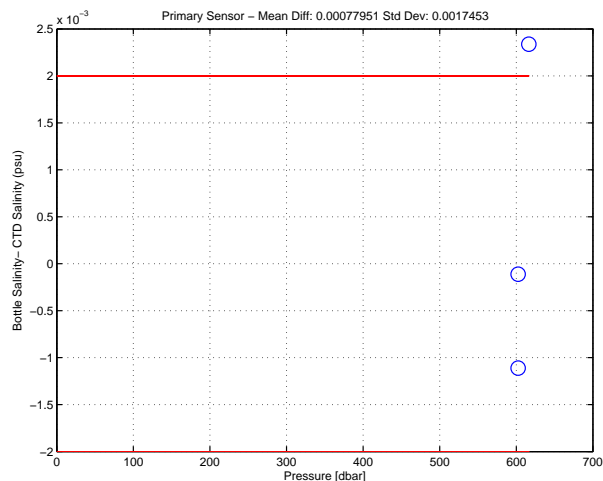
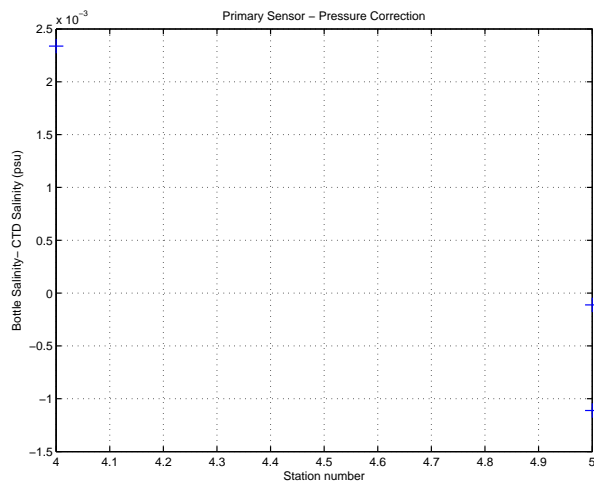
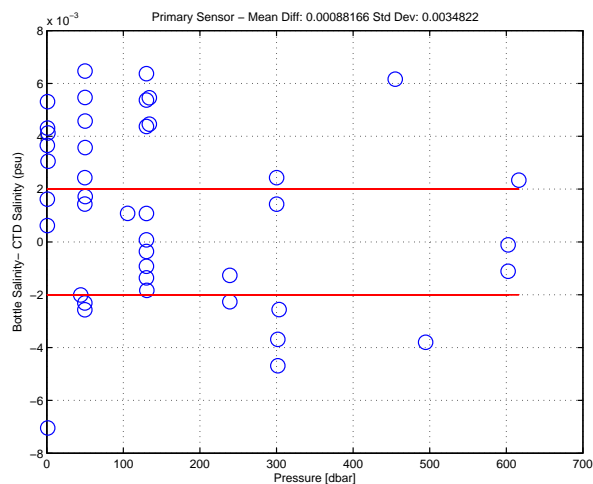
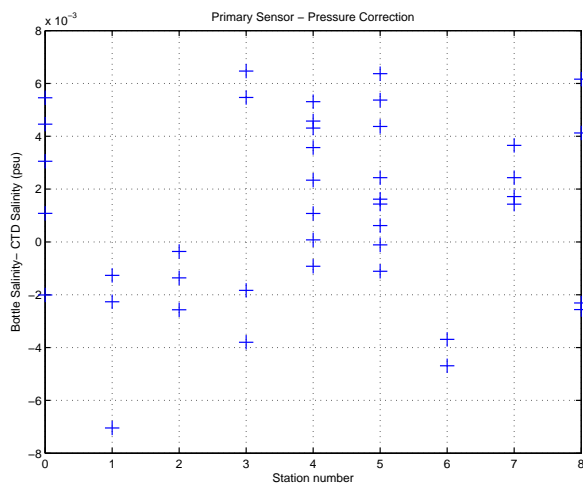
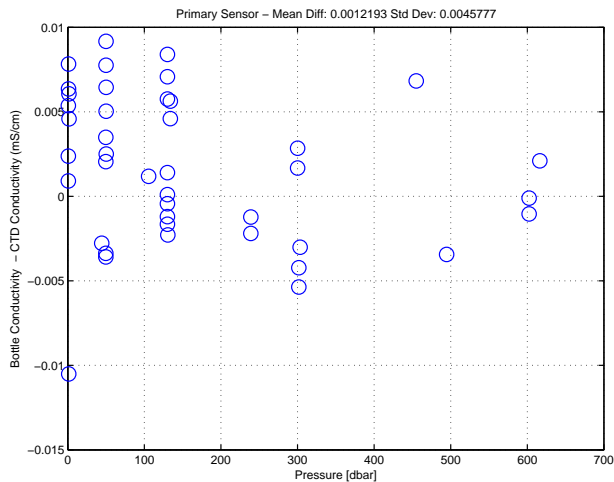
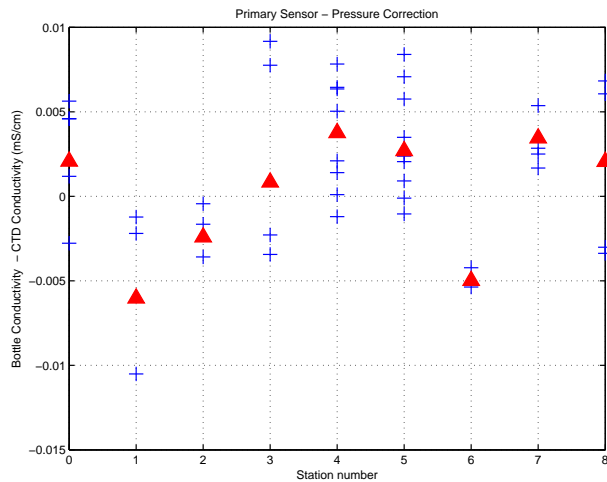


Figure 12: WS0422. Conductivity Calibration (cont.)

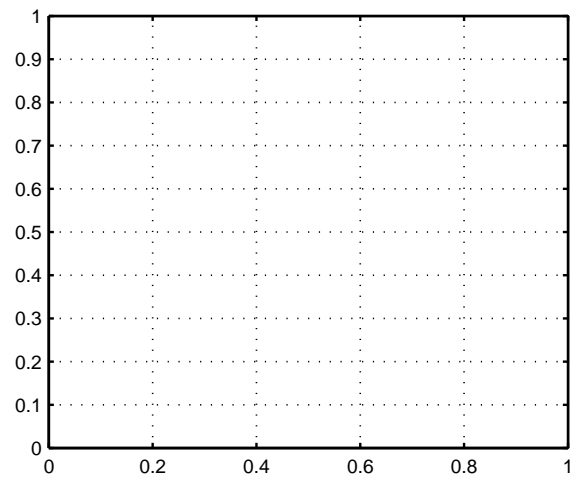
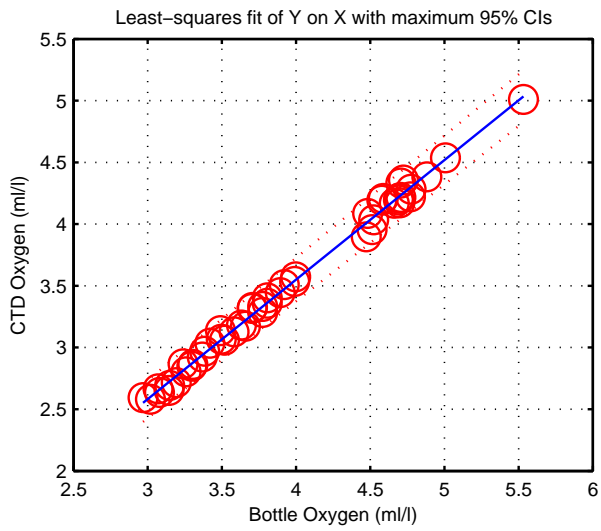
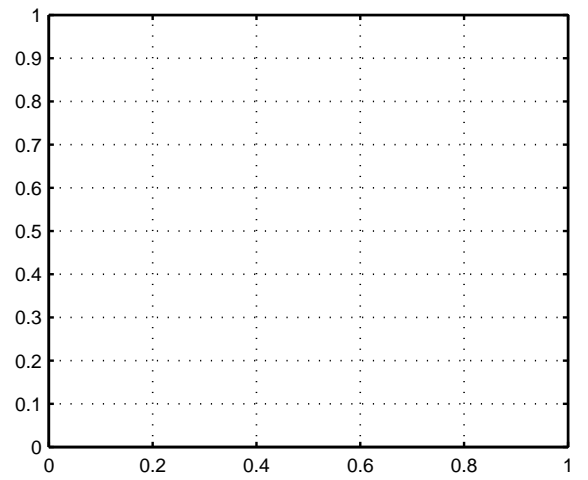
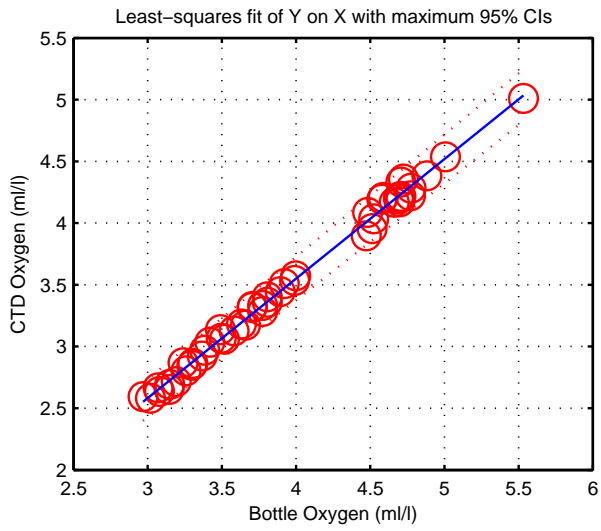
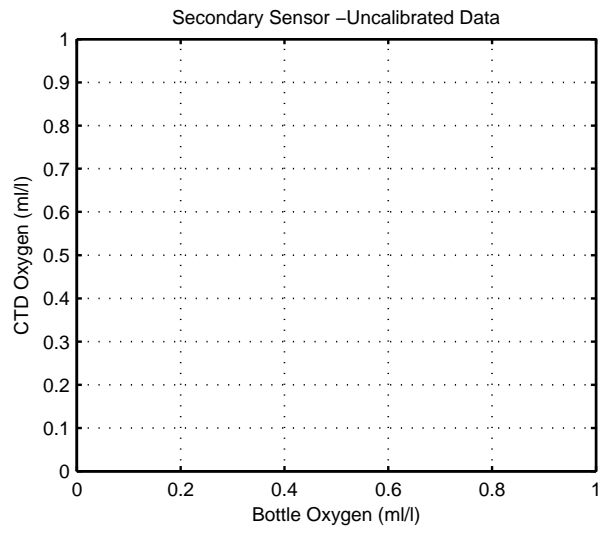
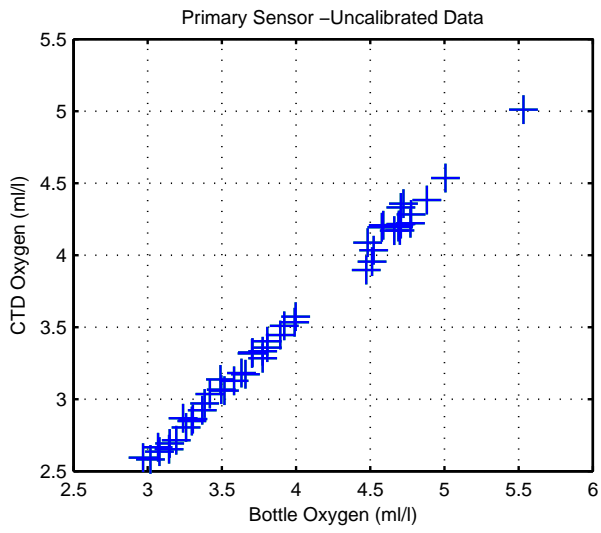


Figure 13: WS0422

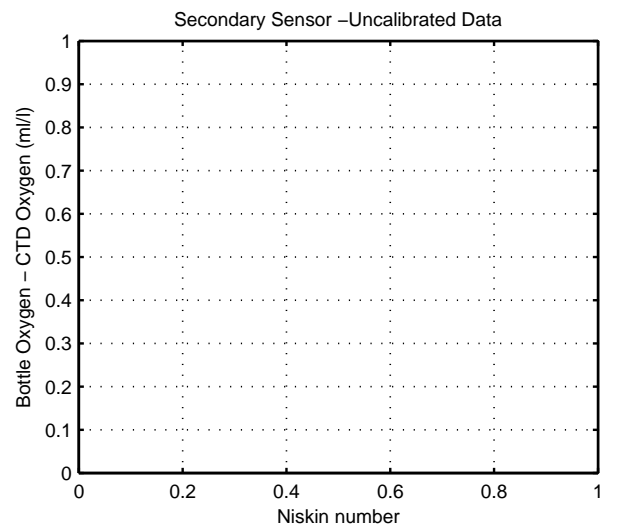
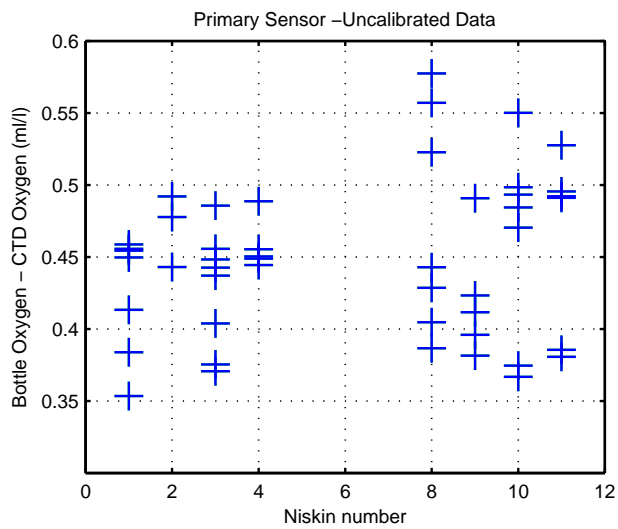
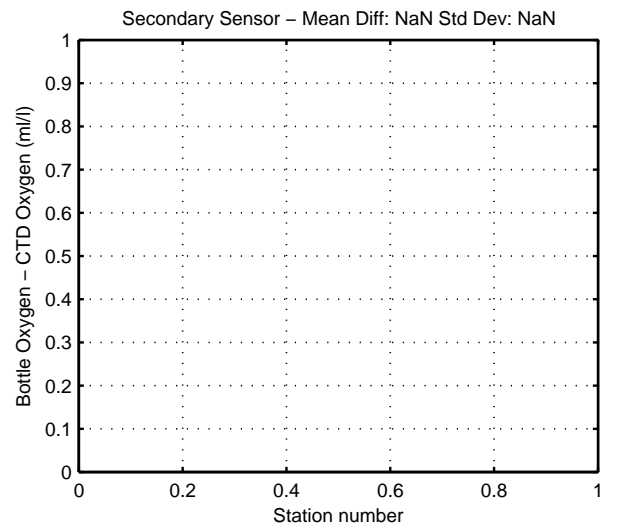
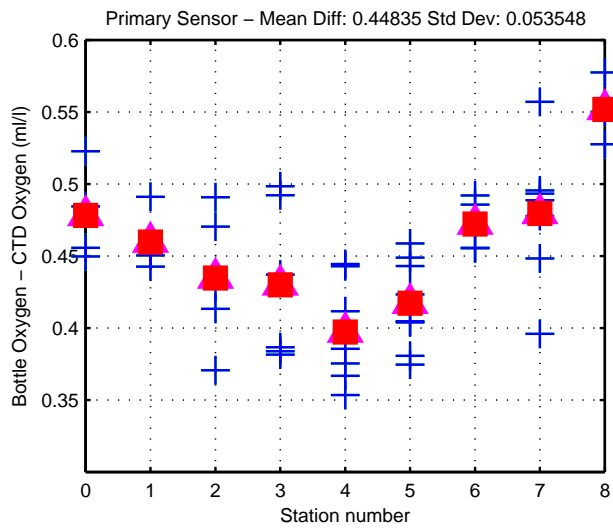
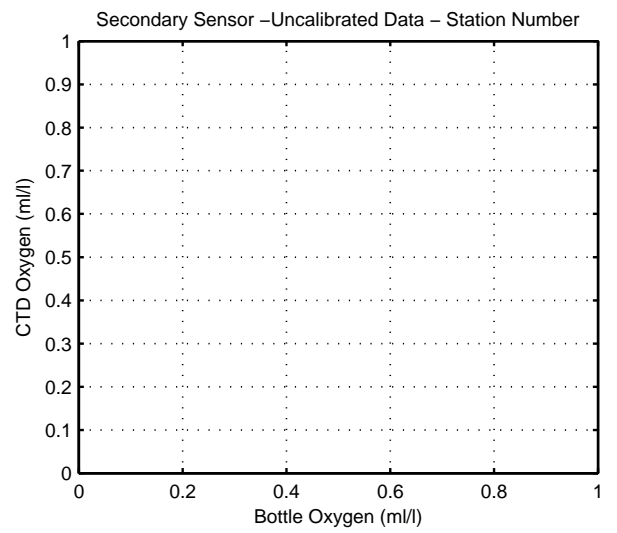
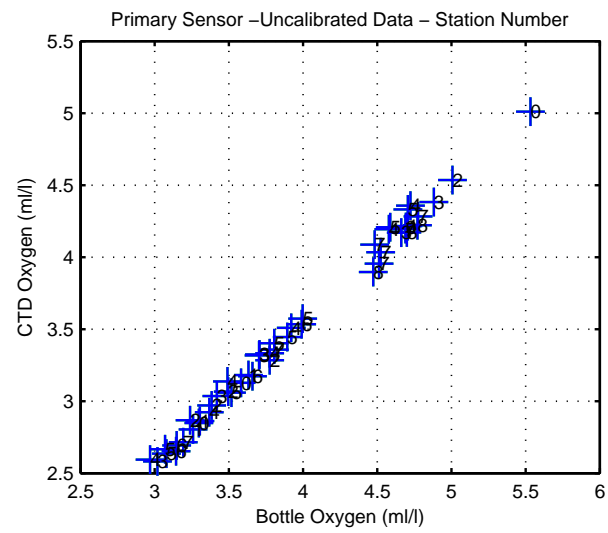


Figure 14: WS0422

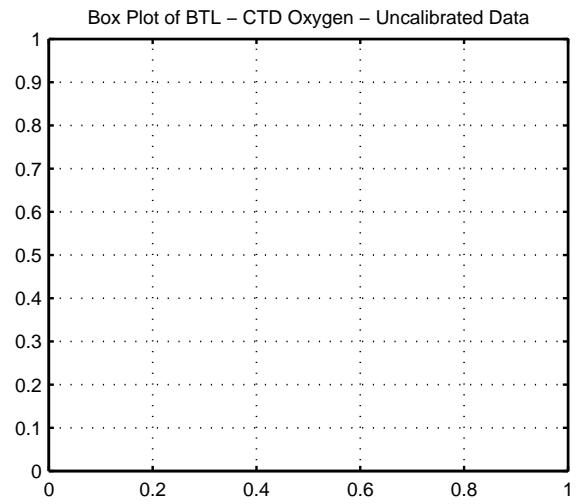
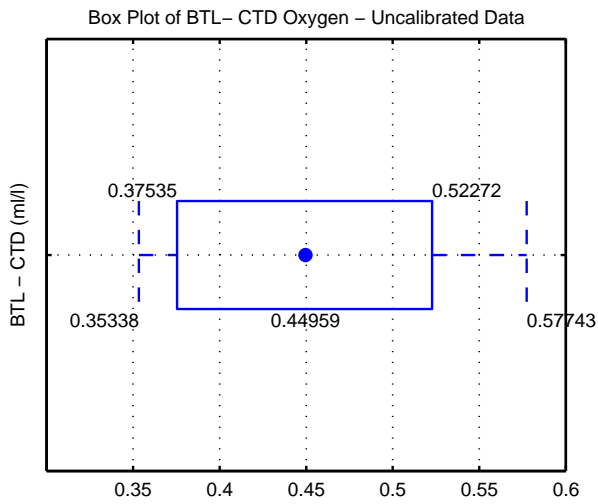
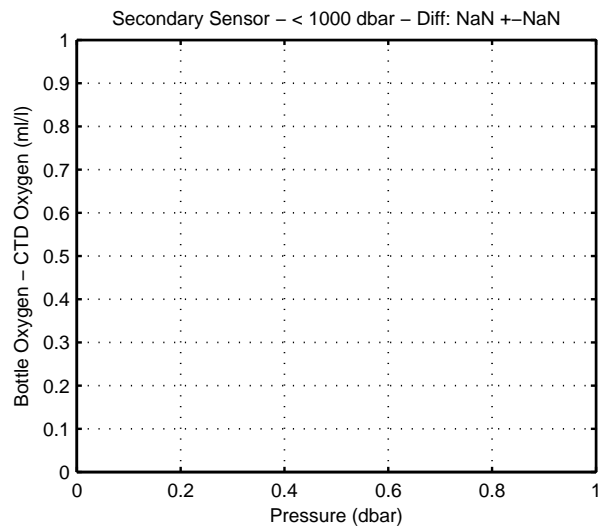
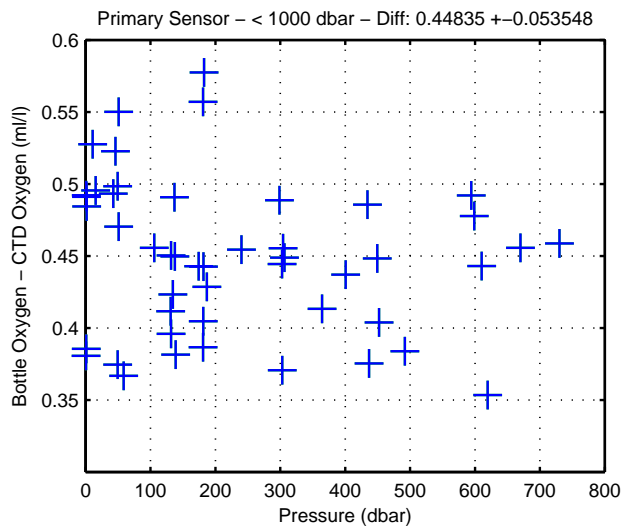
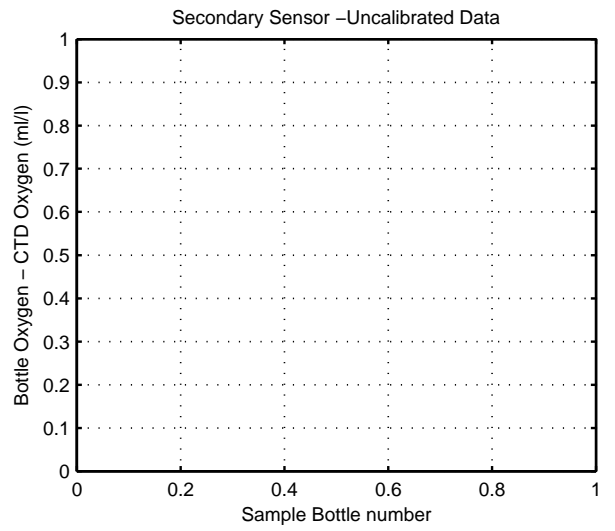
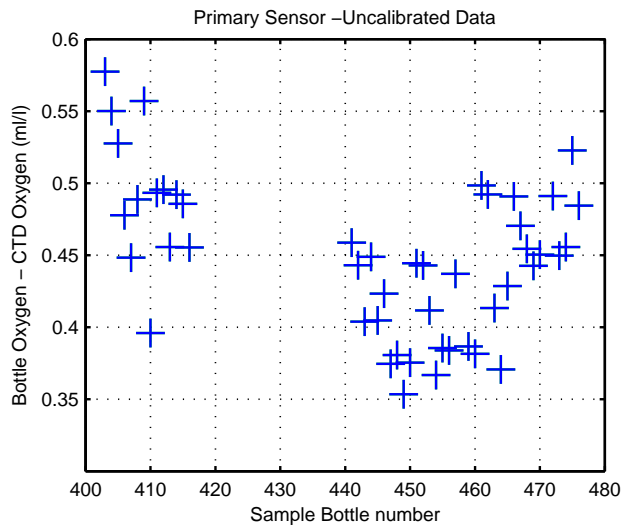
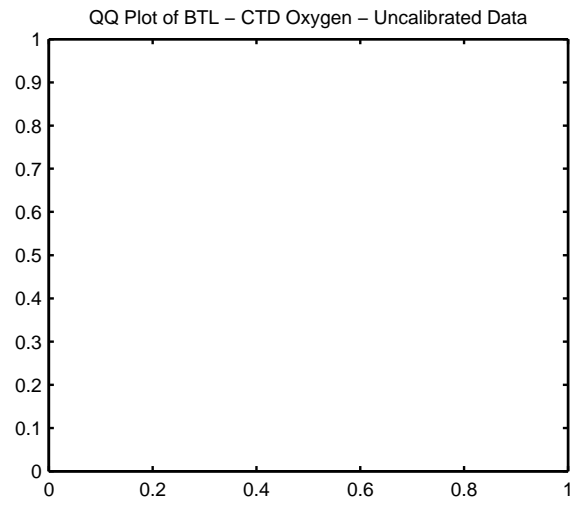
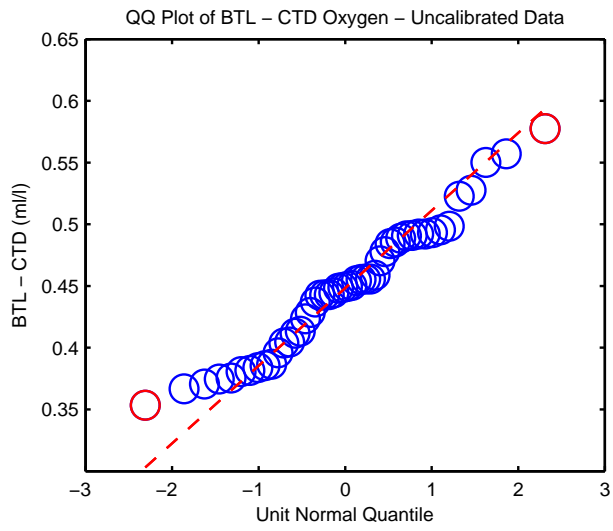
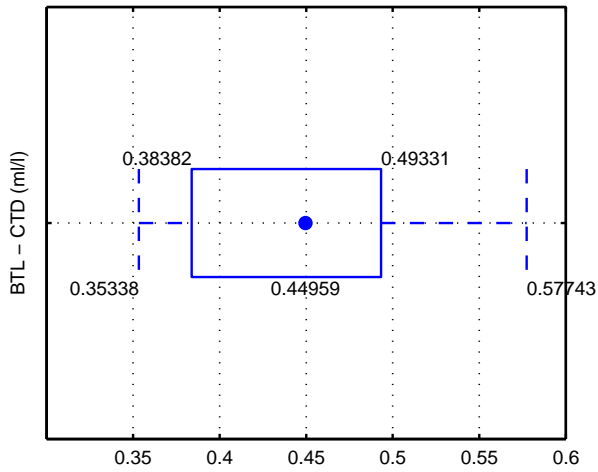


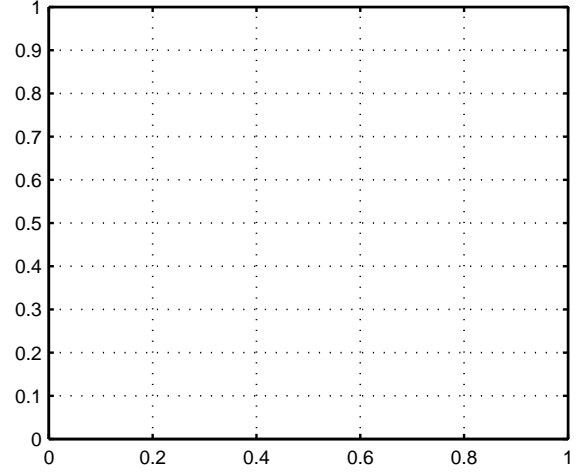
Figure 15: WS0422



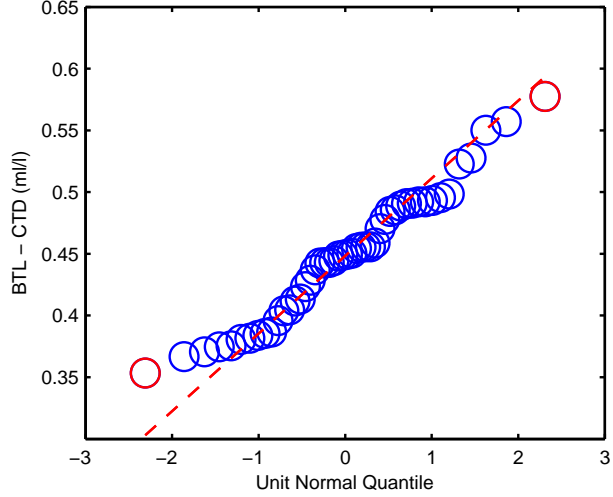
Box Plot of BTL - CTD Oxygen - Uncalibrated Data - Below 0 dbar



Box Plot of BTL - CTD Oxygen - Uncalibrated Data - Below 0 dbar



QQ Plot of BTL - CTD Oxygen - Uncalibrated Data - Below 0 dbar



QQ Plot of BTL - CTD Oxygen - Uncalibrated Data - Below 0 dbar

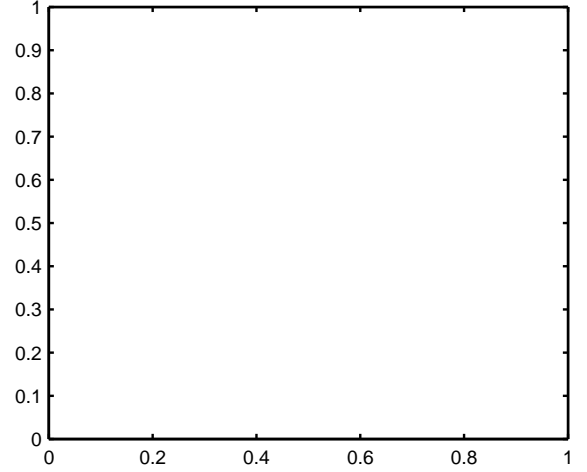


Figure 16: WS0422

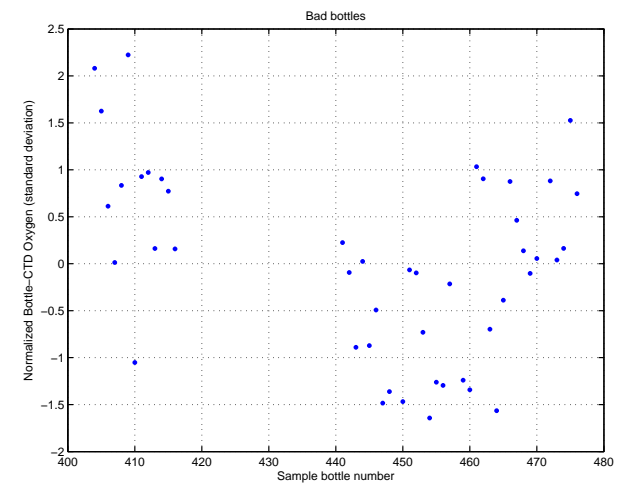
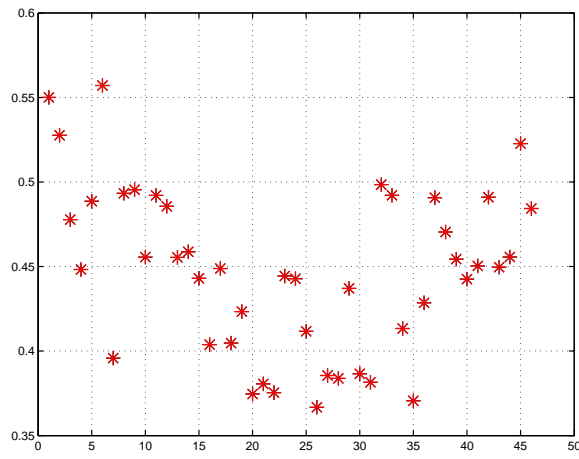
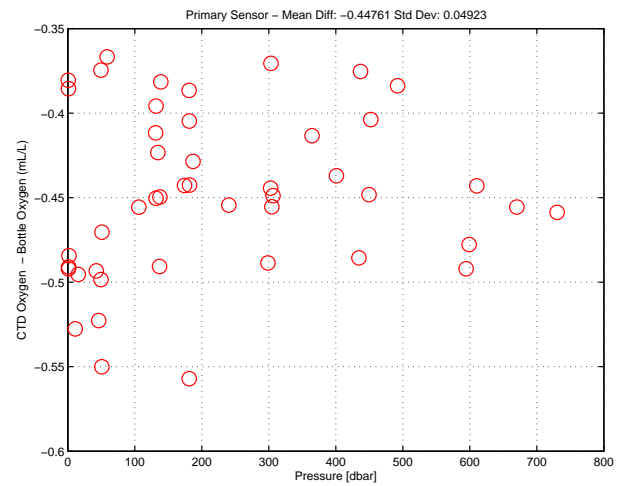
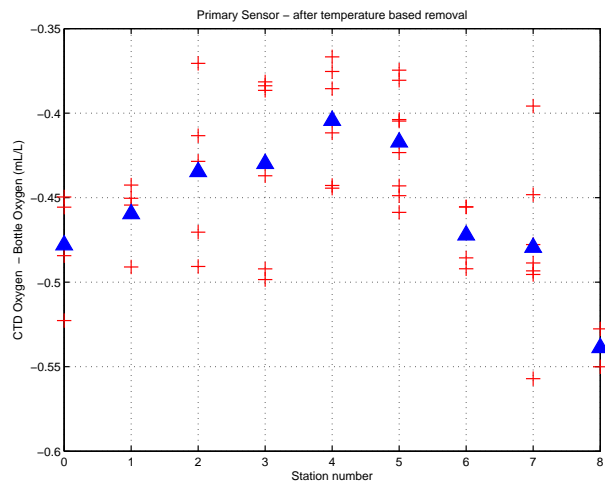
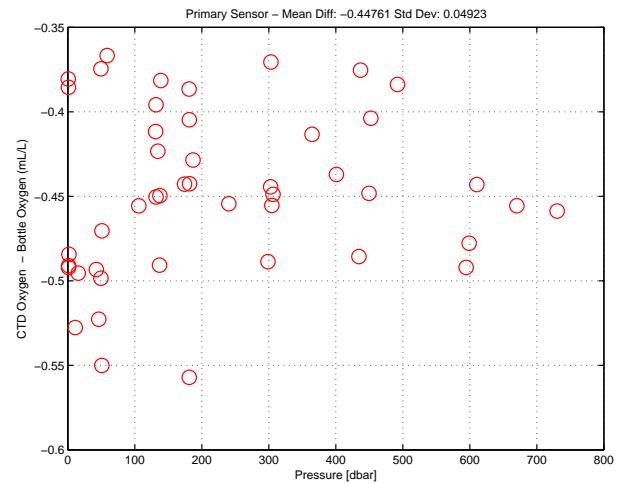
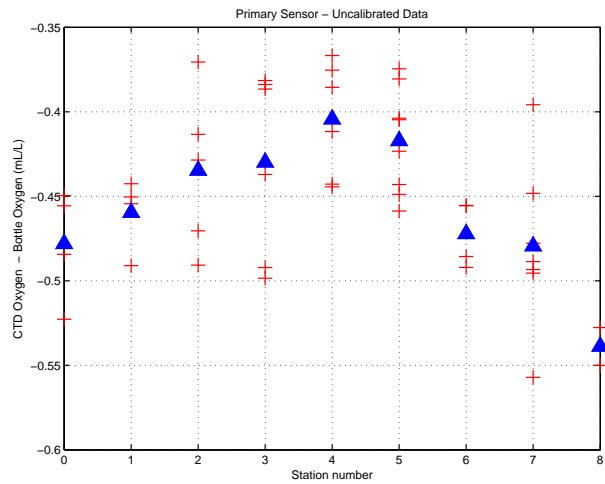


Figure 17: WS0422. Oxygen Calibration

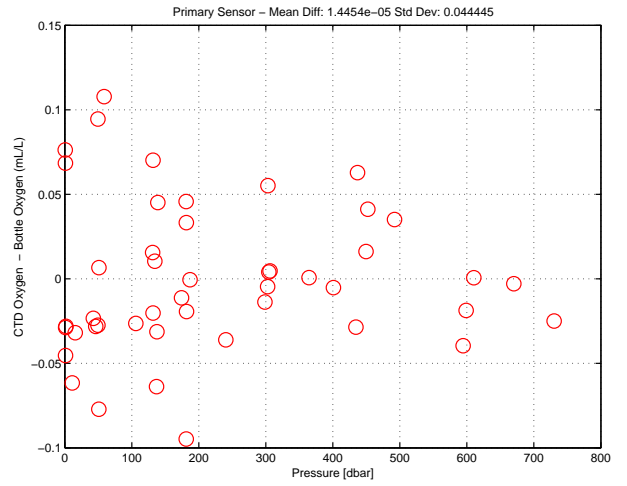
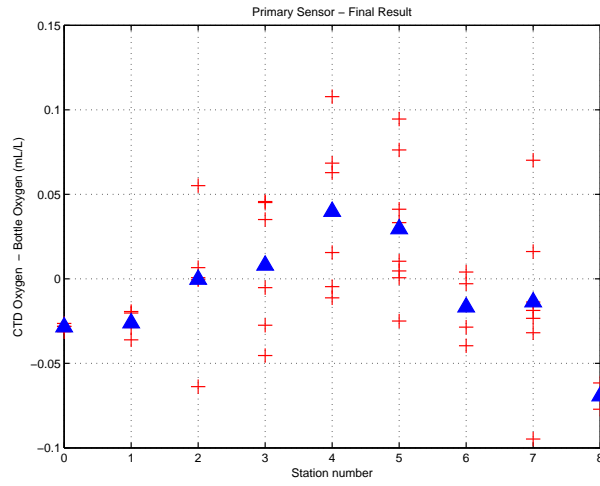


Figure 18: WS0422. Oxygen Calibration (cont.)

Florida Straits R/V FG Walton Smith
 CTD Station 0 (CTD000)
 Latitude 27.002 N Longitude 79.930 W
 28-Aug-2004 19:04 Z

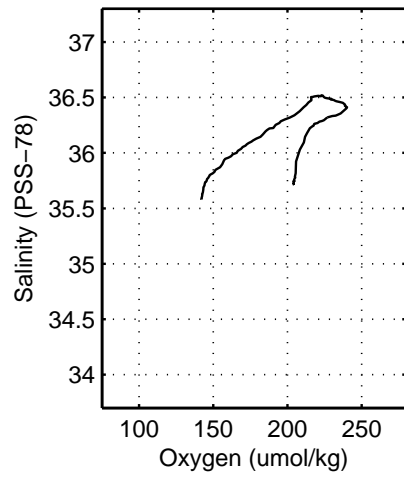
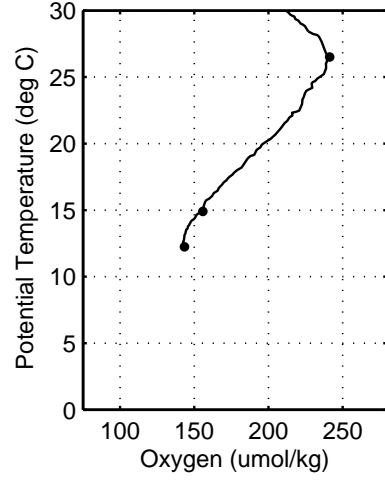
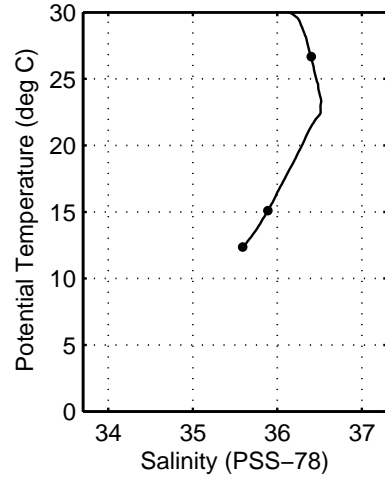
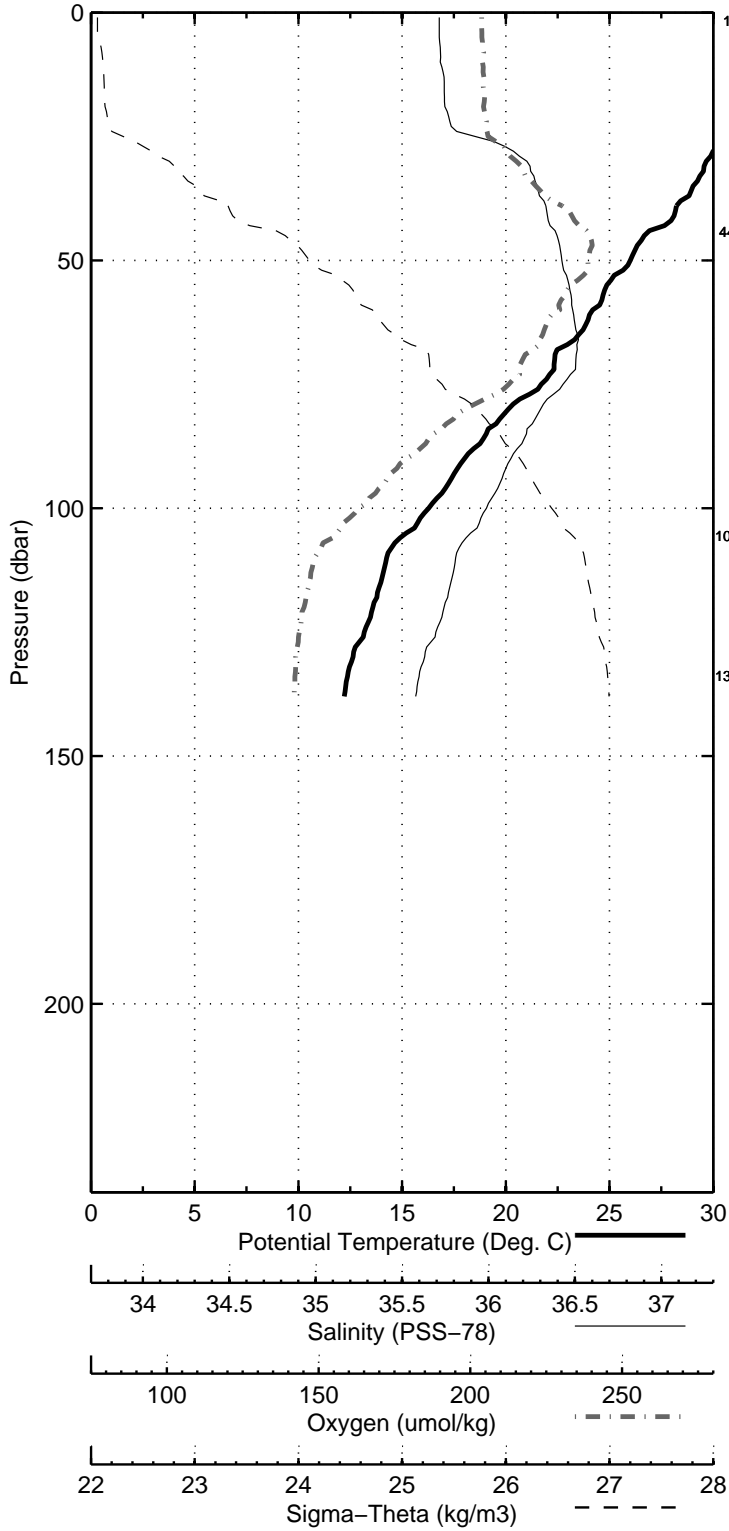


Figure 19: WS0422

Florida Straits R/V FG Walton Smith
 CTD Station 1 (CTD001)
 Latitude 27.001 N Longitude 79.867 W
 28-Aug-2004 18:02 Z

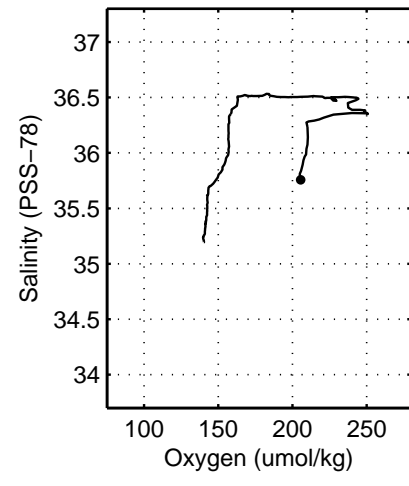
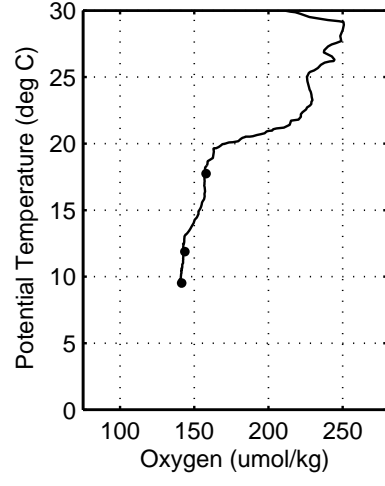
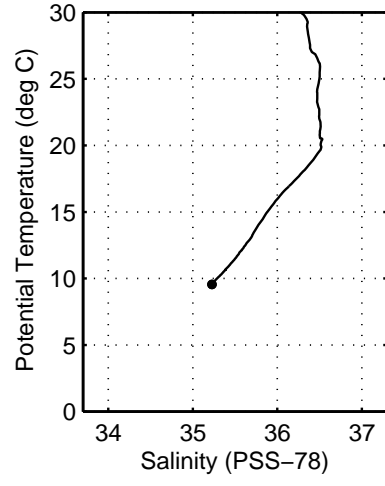
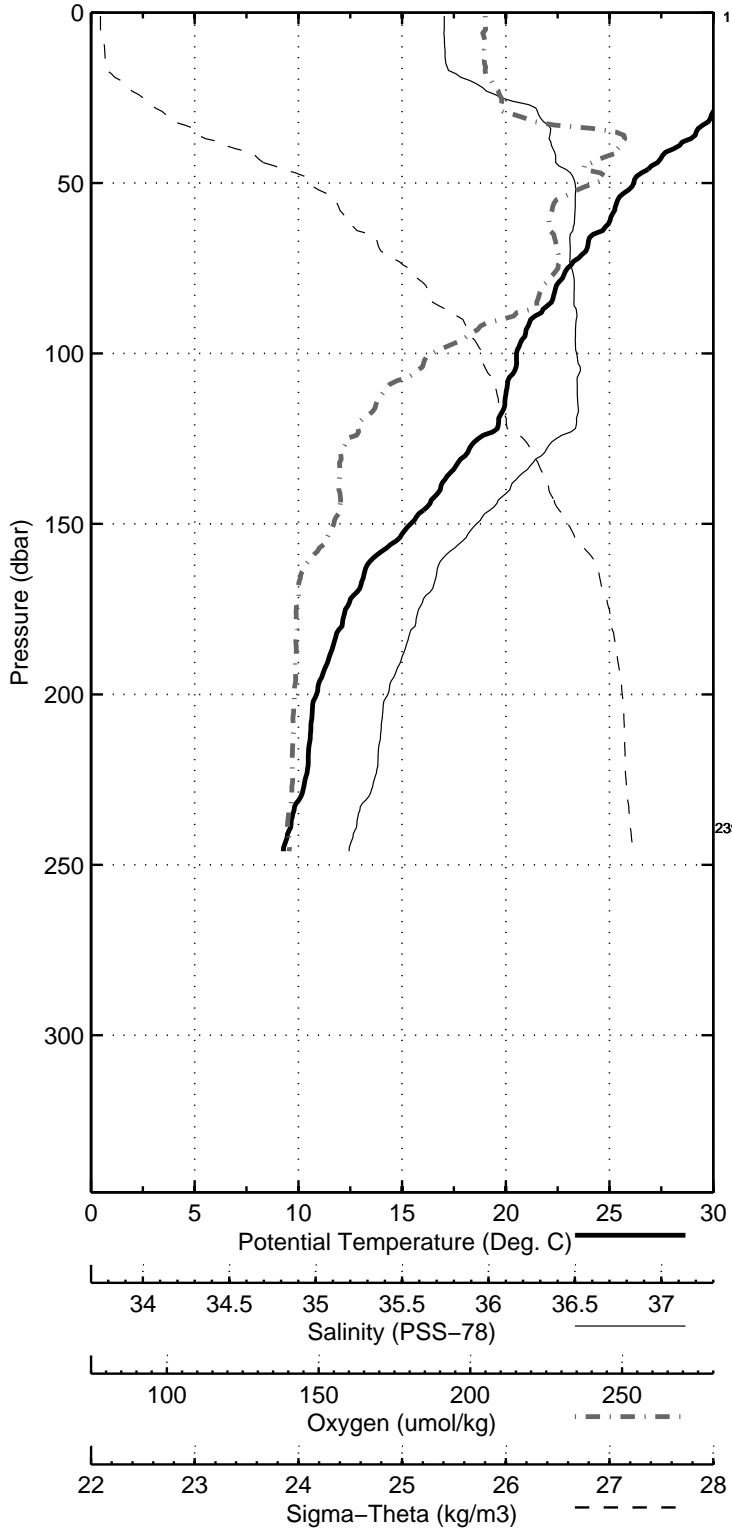


Figure 20: WS0422

Florida Straits R/V FG Walton Smith
 CTD Station 2 (CTD002)
 Latitude 27.003 N Longitude 79.783 W
 28-Aug-2004 16:54 Z

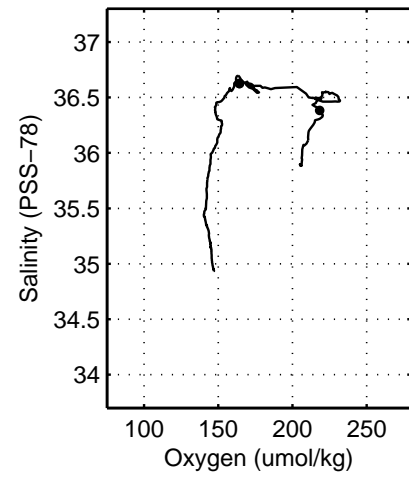
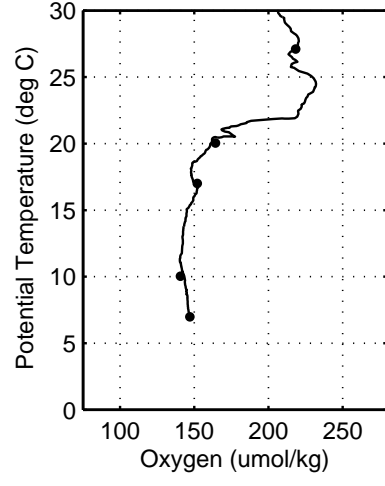
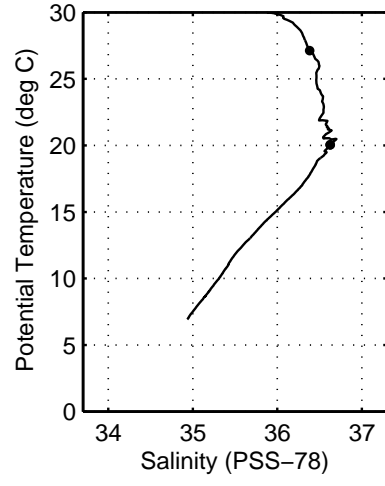
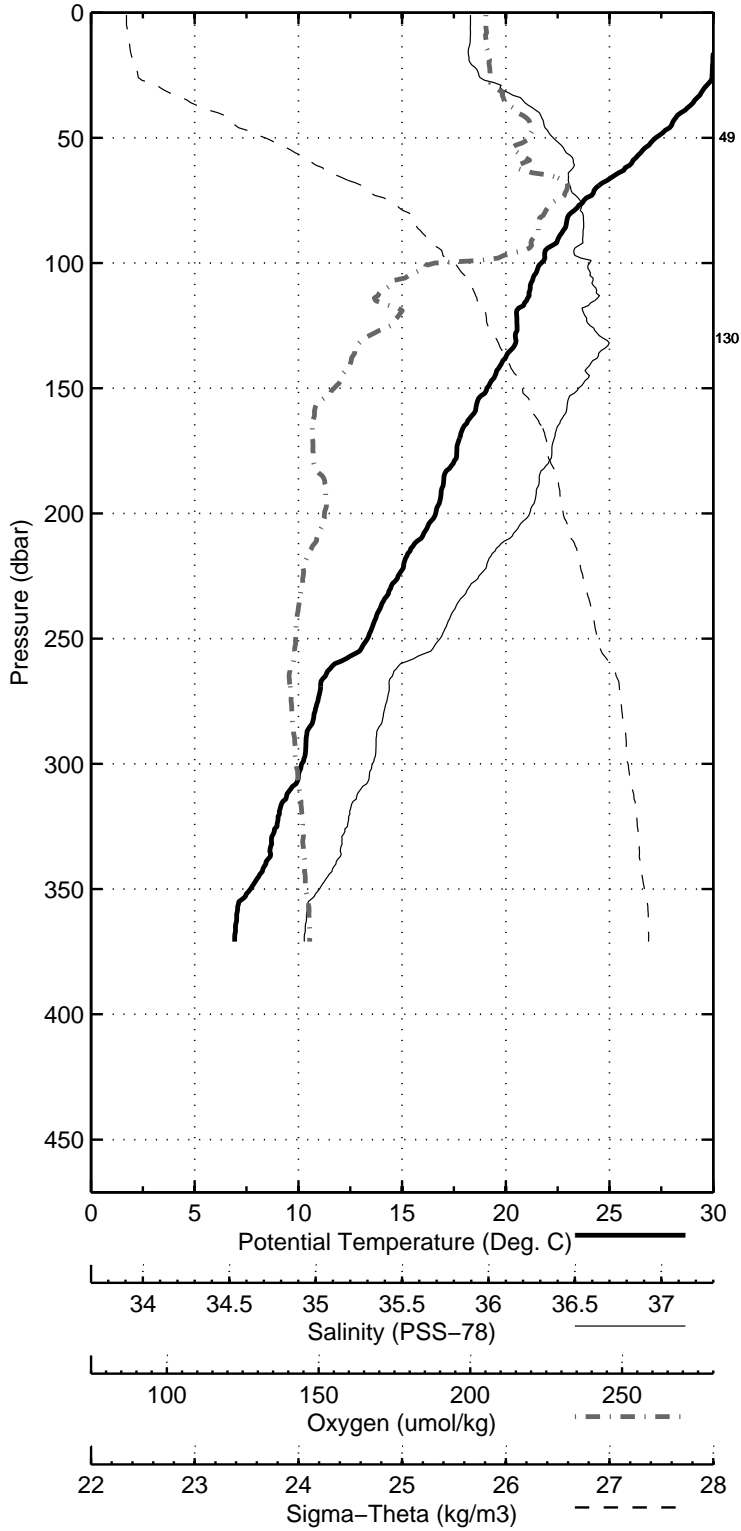


Figure 21: WS0422

Florida Straits R/V FG Walton Smith
 CTD Station 3 (CTD003)
 Latitude 27.003 N Longitude 79.683 W
 28-Aug-2004 15:37 Z

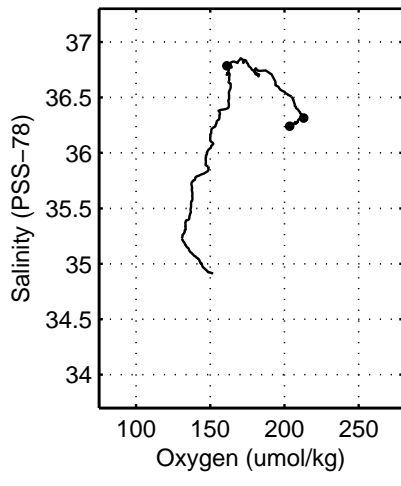
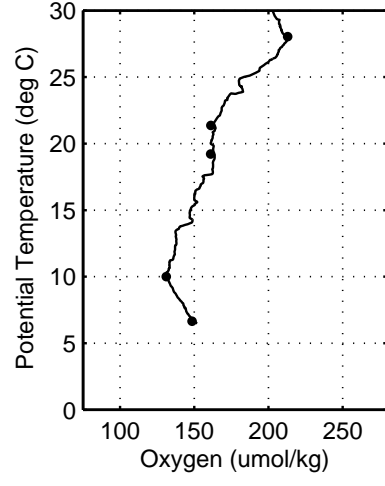
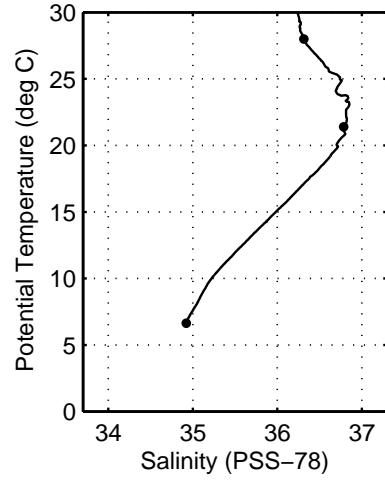
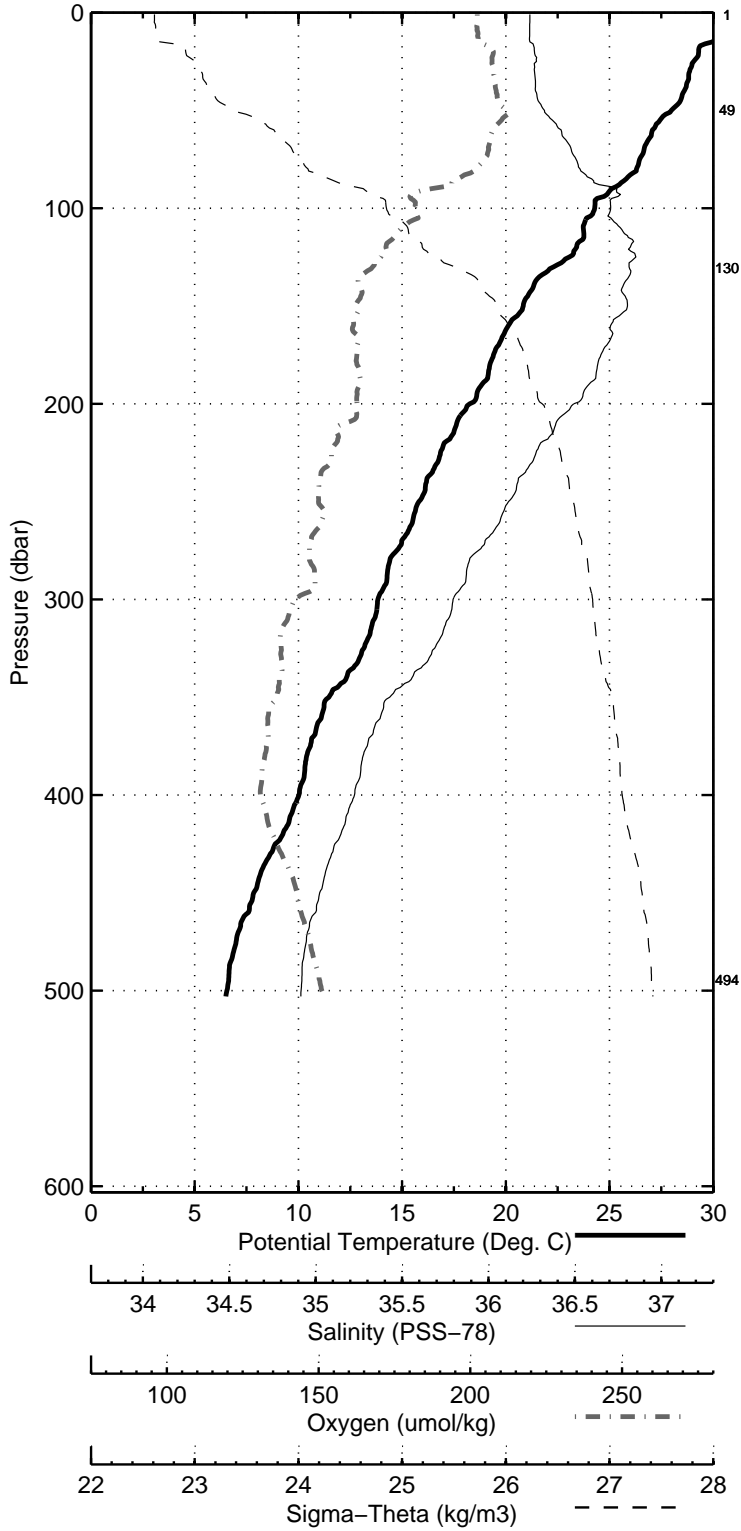


Figure 22: WS0422

Florida Straits R/V FG Walton Smith
 CTD Station 4 (CTD004)
 Latitude 27.003 N Longitude 79.618 W
 28-Aug-2004 14:24 Z

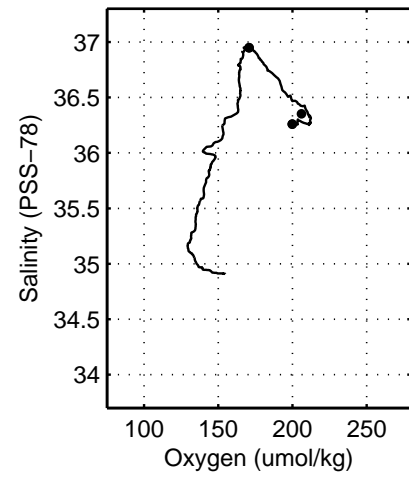
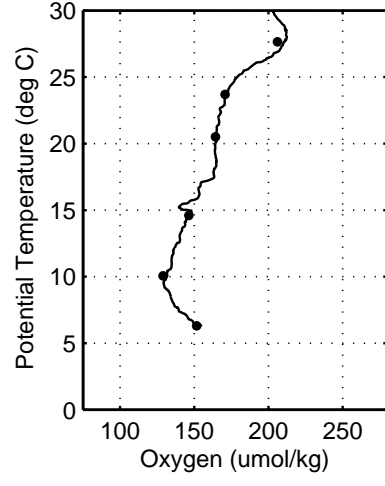
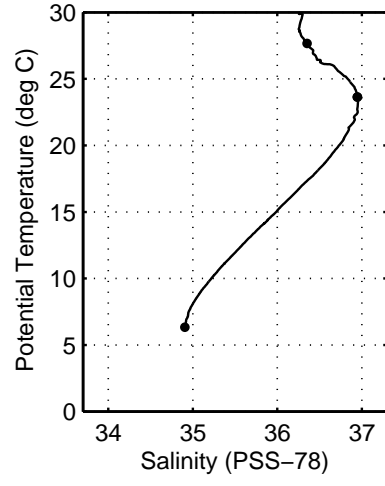
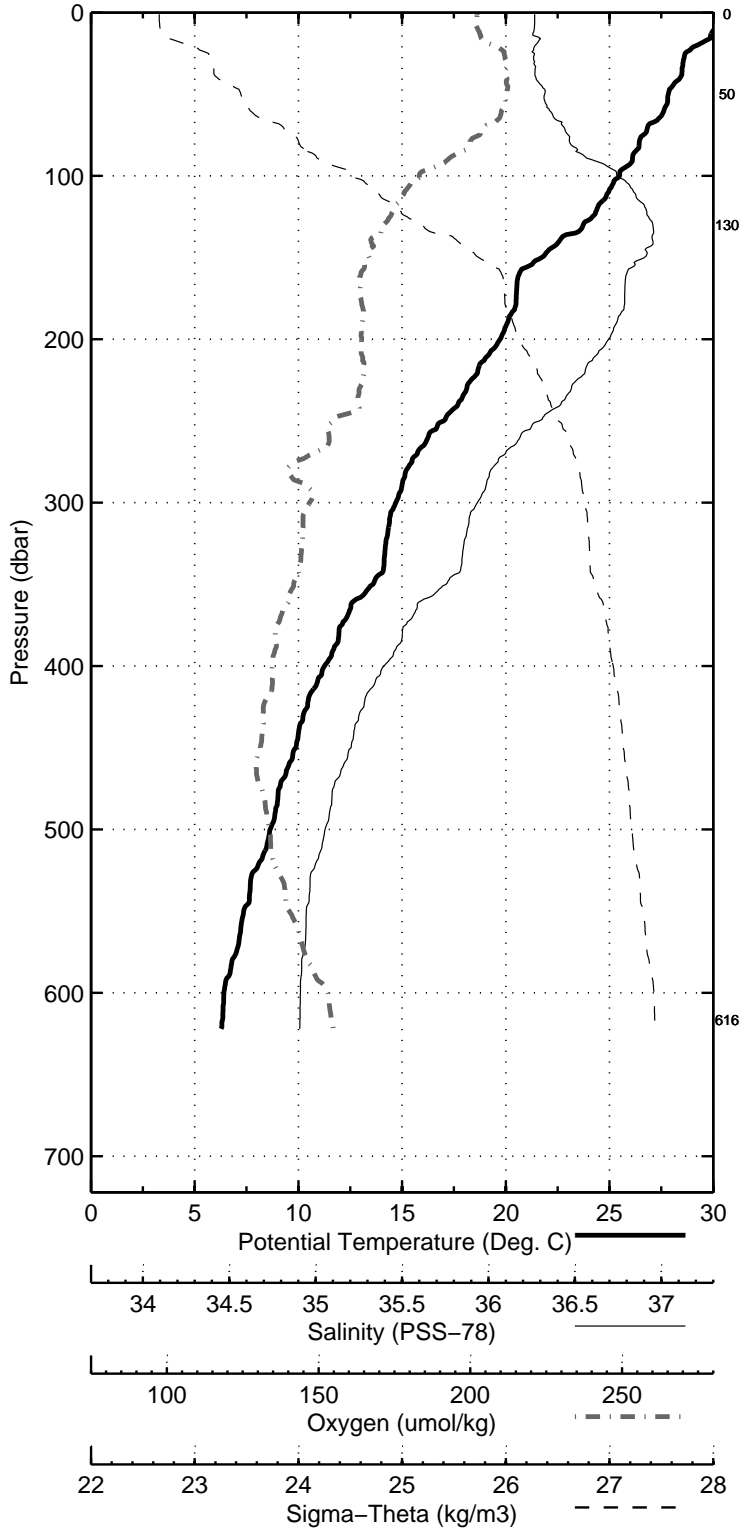


Figure 23: WS0422

Florida Straits R/V FG Walton Smith
 CTD Station 5 (CTD005)
 Latitude 27.003 N Longitude 79.500 W
 28-Aug-2004 12:55 Z

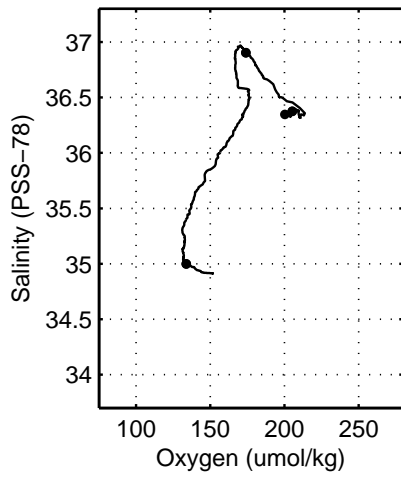
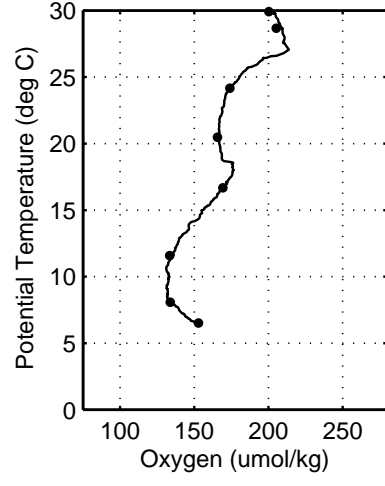
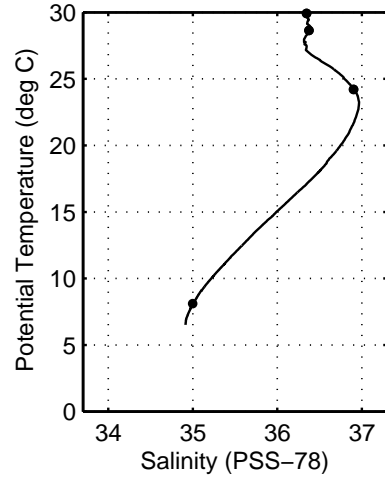
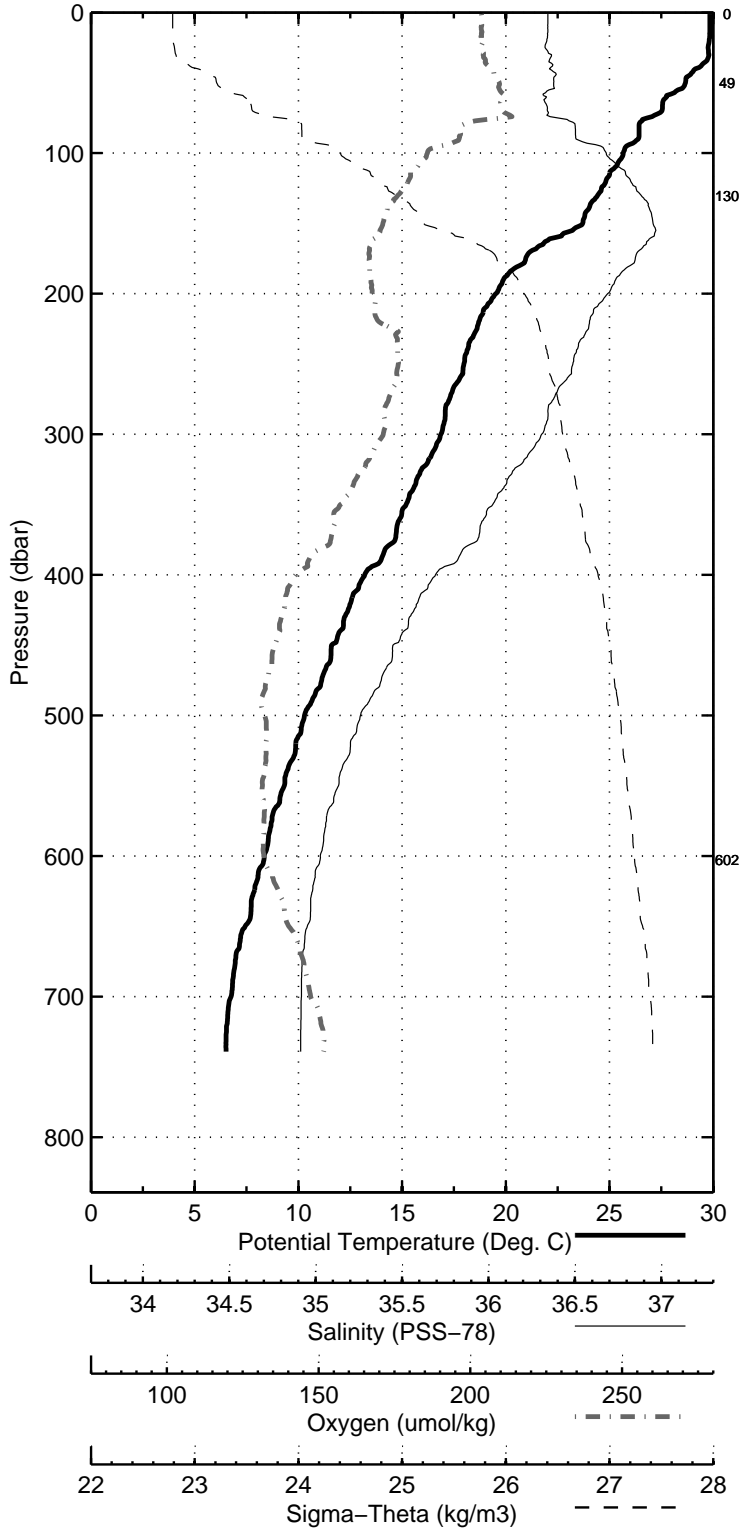


Figure 24: WS0422

Florida Straits R/V FG Walton Smith
 CTD Station 6 (CTD006)
 Latitude 27.001 N Longitude 79.383 W
 28-Aug-2004 11:30 Z

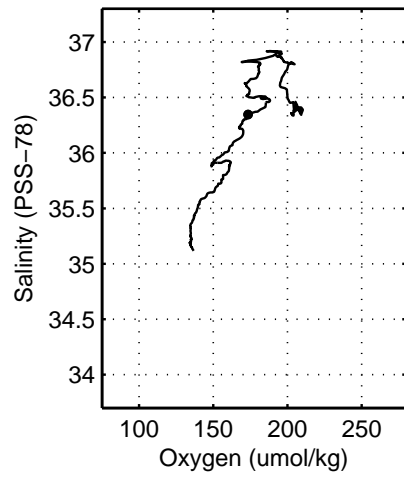
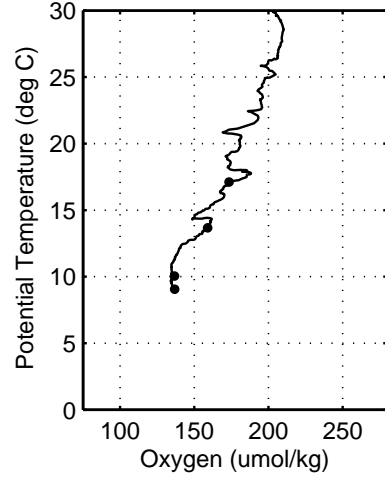
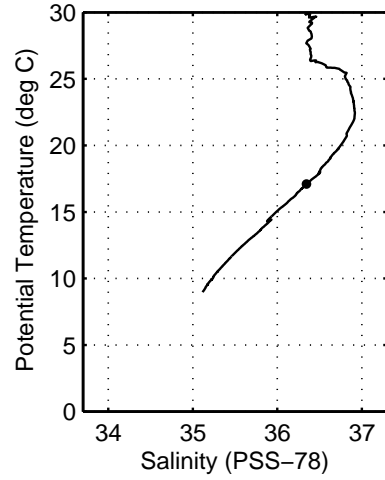
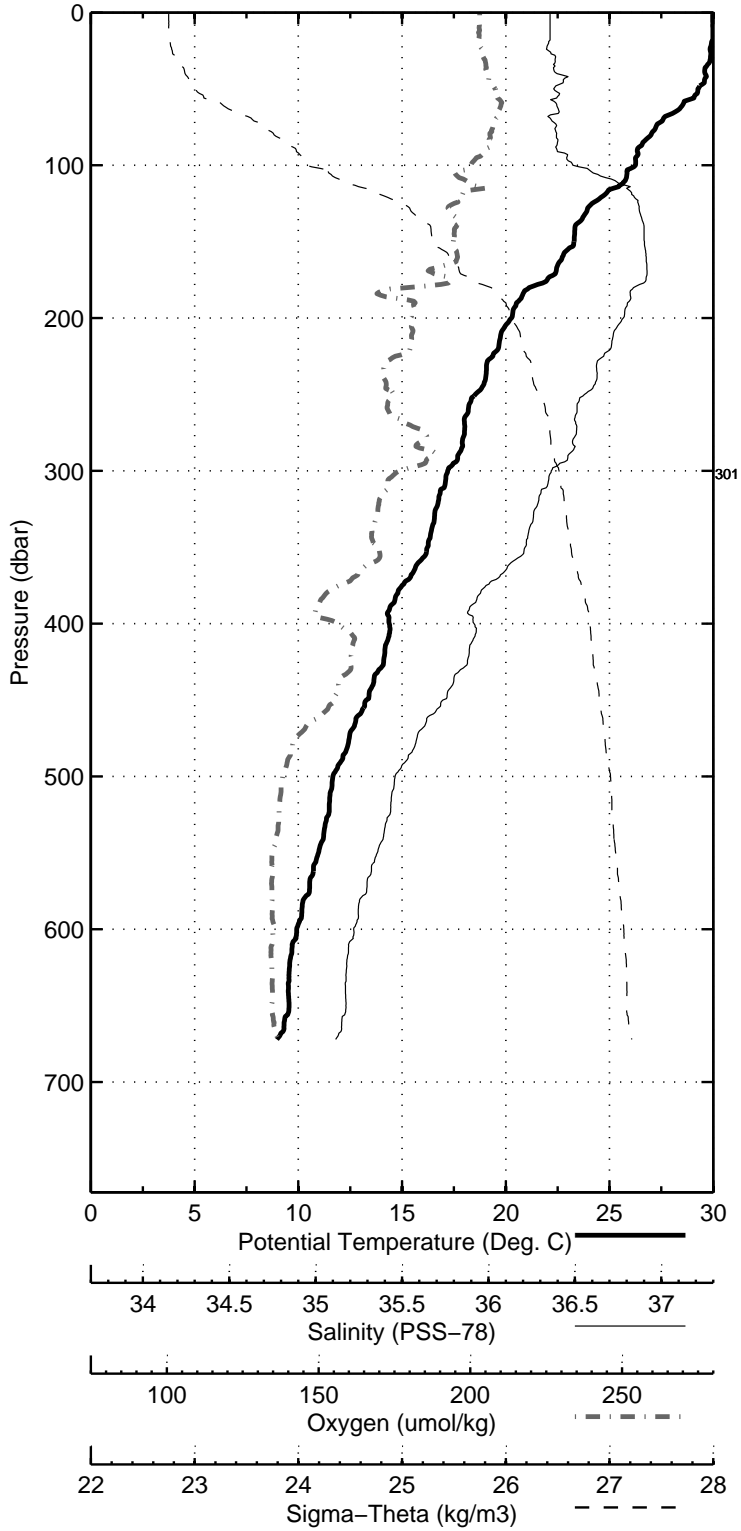


Figure 25: WS0422

Florida Straits R/V FG Walton Smith
 CTD Station 7 (CTD007)
 Latitude 27.002 N Longitude 79.284 W
 28-Aug-2004 10:19 Z

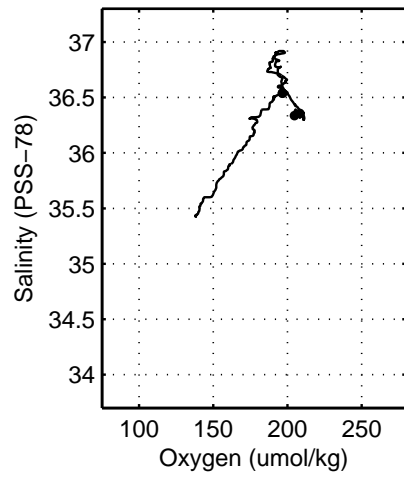
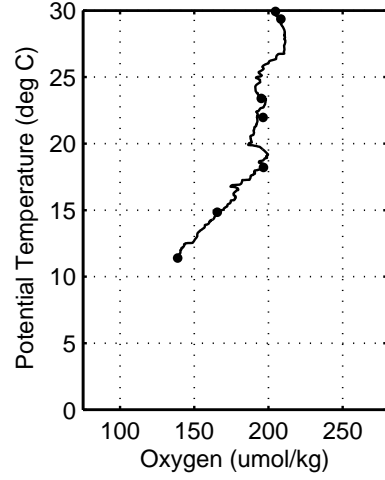
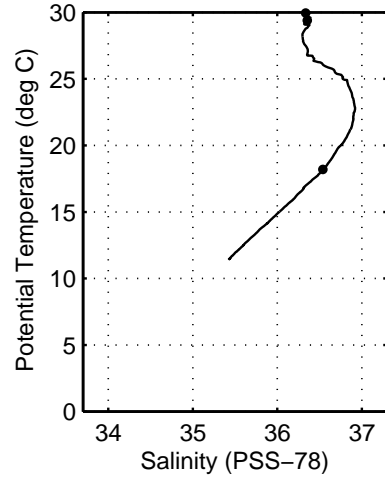
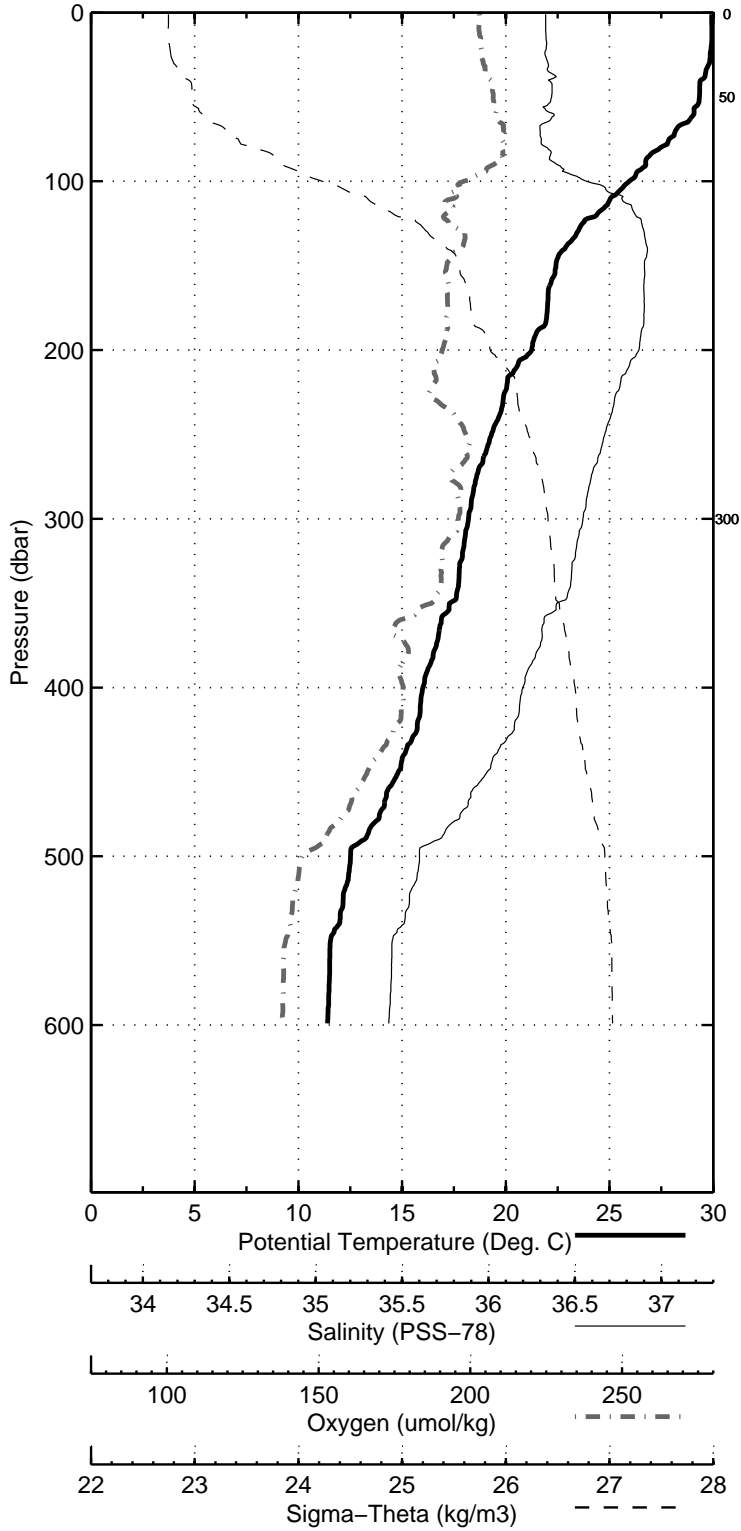


Figure 26: WS0422

Florida Straits R/V FG Walton Smith
CTD Station 8 (CTD008)
Latitude 27.000 N Longitude 79.200 W
28-Aug-2004 09:14 Z

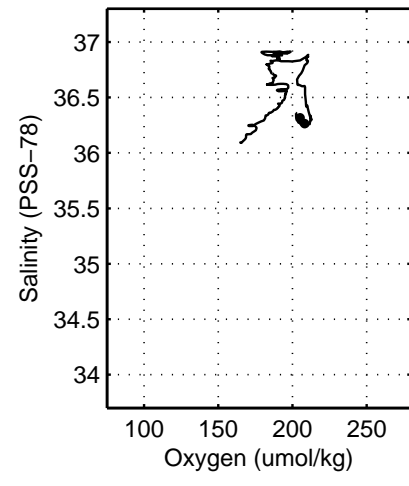
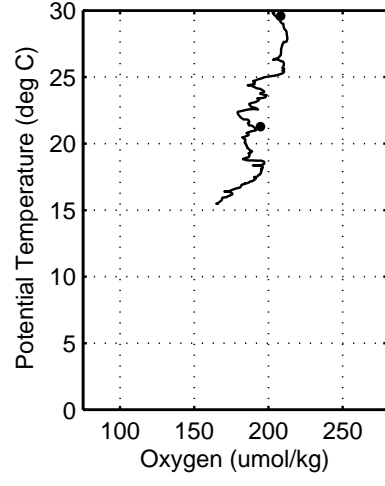
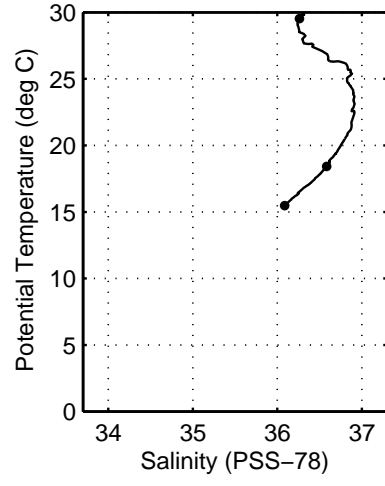
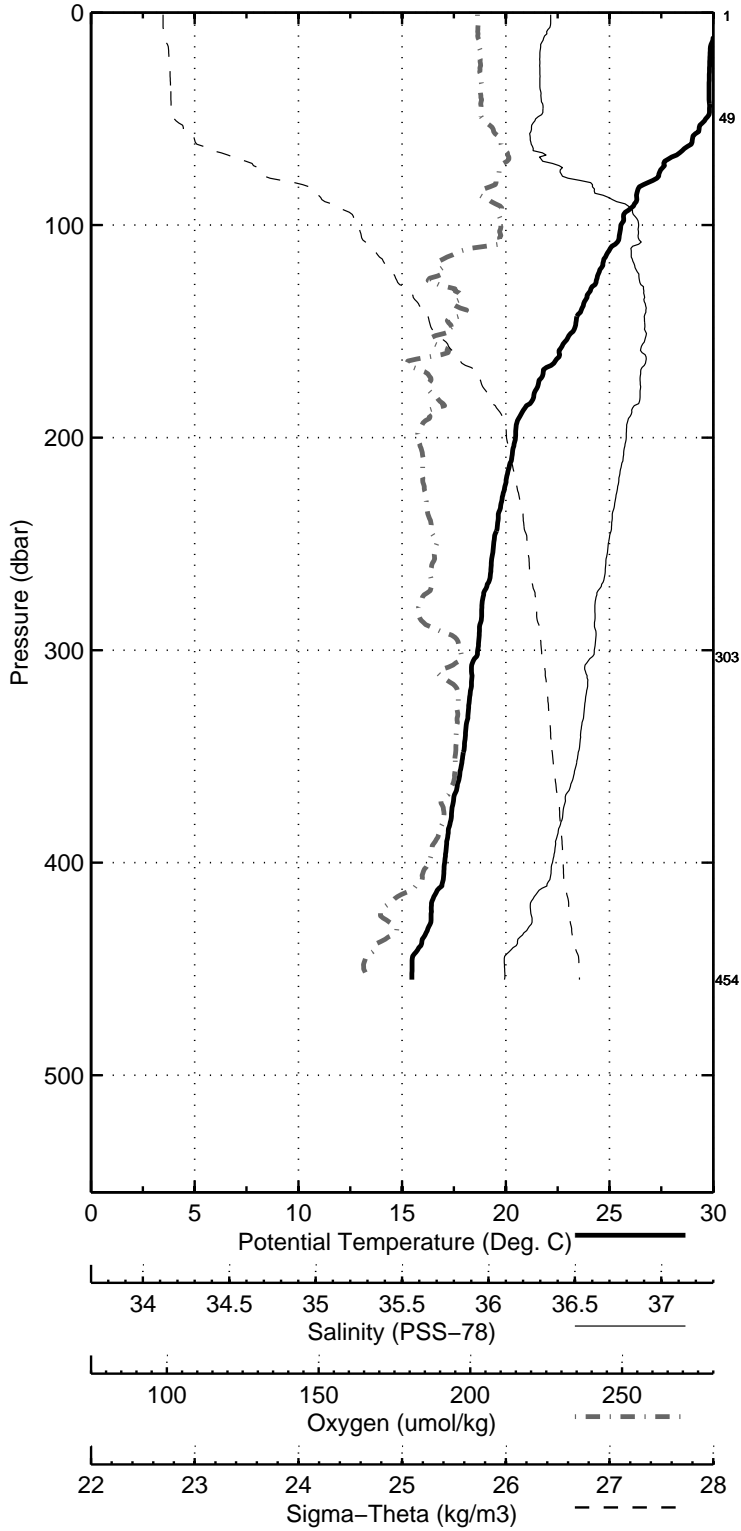


Figure 27: WS0422