

Straits of Florida: CTD data calibration report
NOAA/AOML: Western Boundary Time Series program

Cruise ID: WS0415

Cruise date: June, 2004

Christopher M. Duncombe

Rigoberto F. Garcia

Carlos A. Fonseca

Christopher S. Meinen

Molly O. Baringer

May 8, 2008

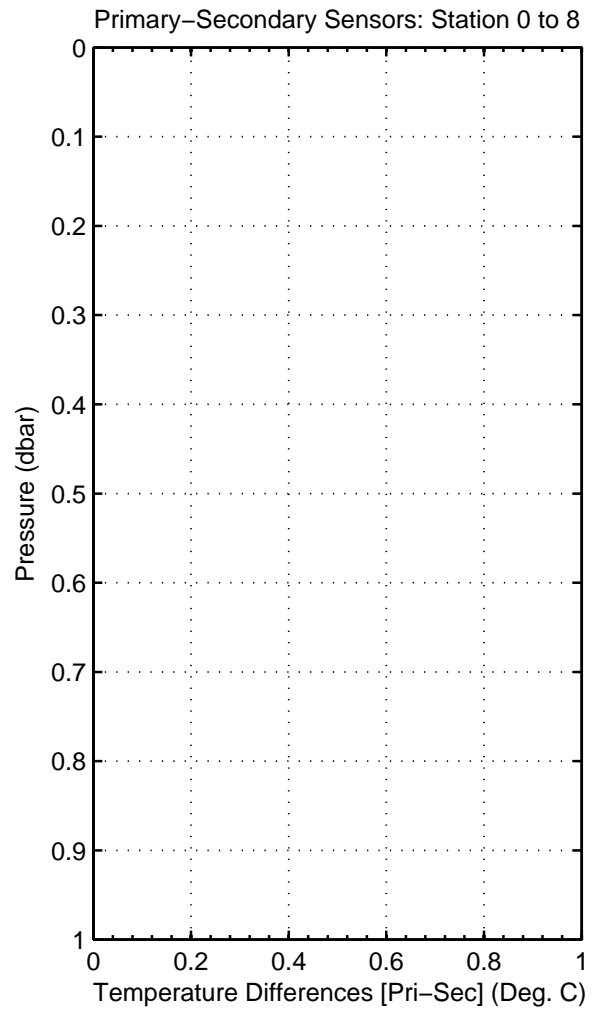
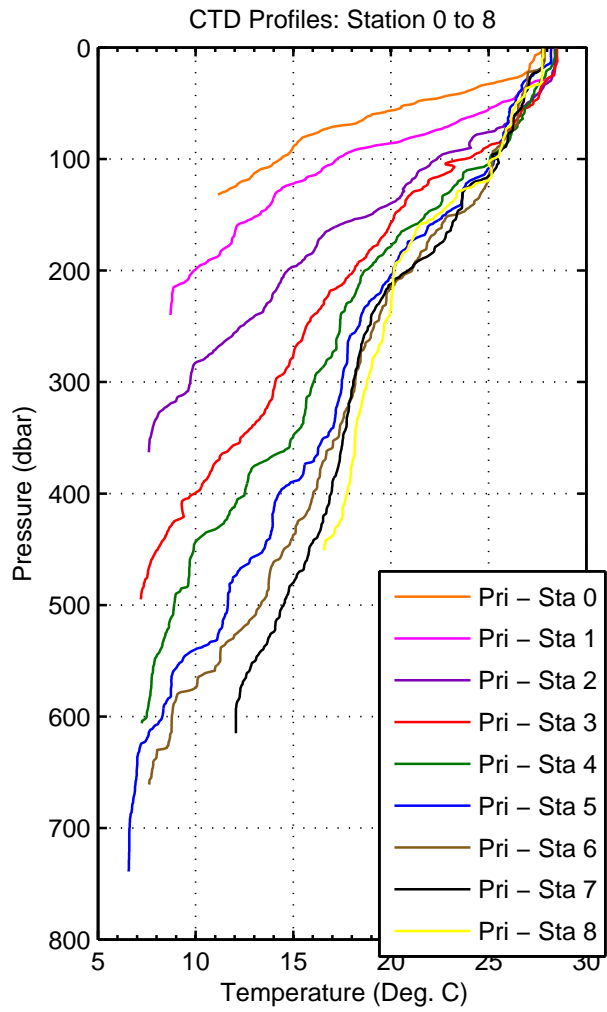


Figure 1: WS0415

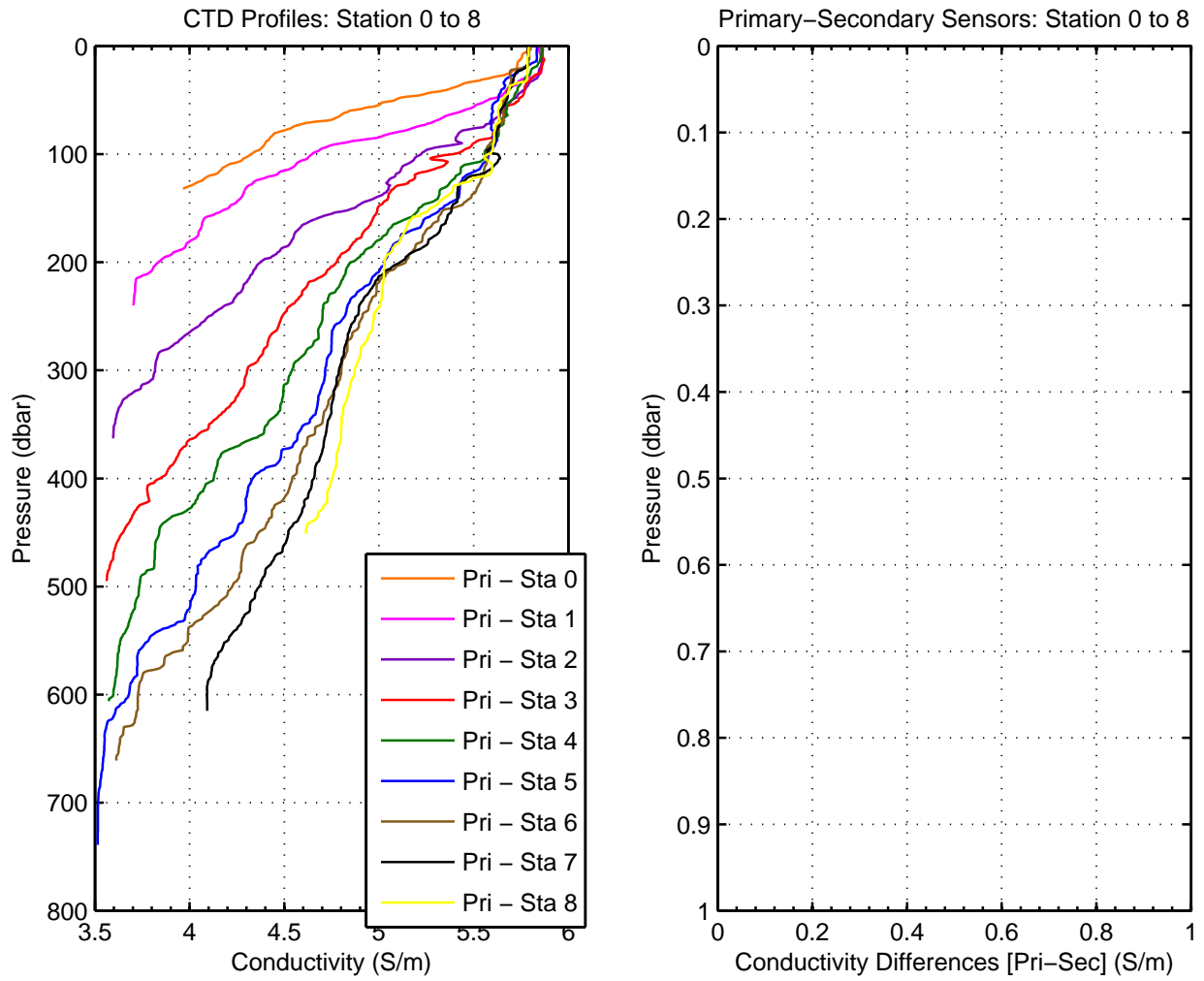


Figure 2: WS0415

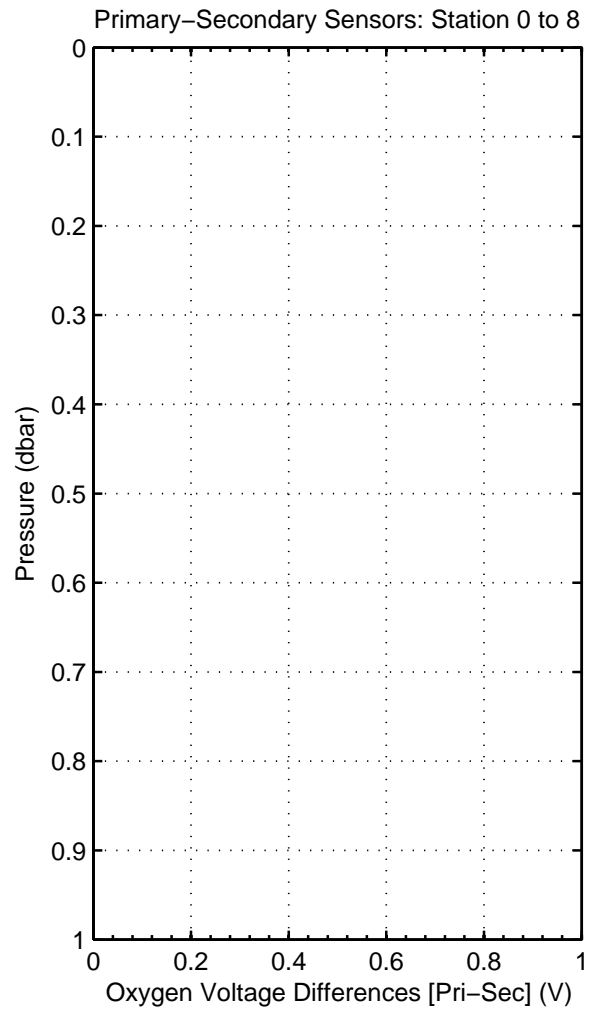
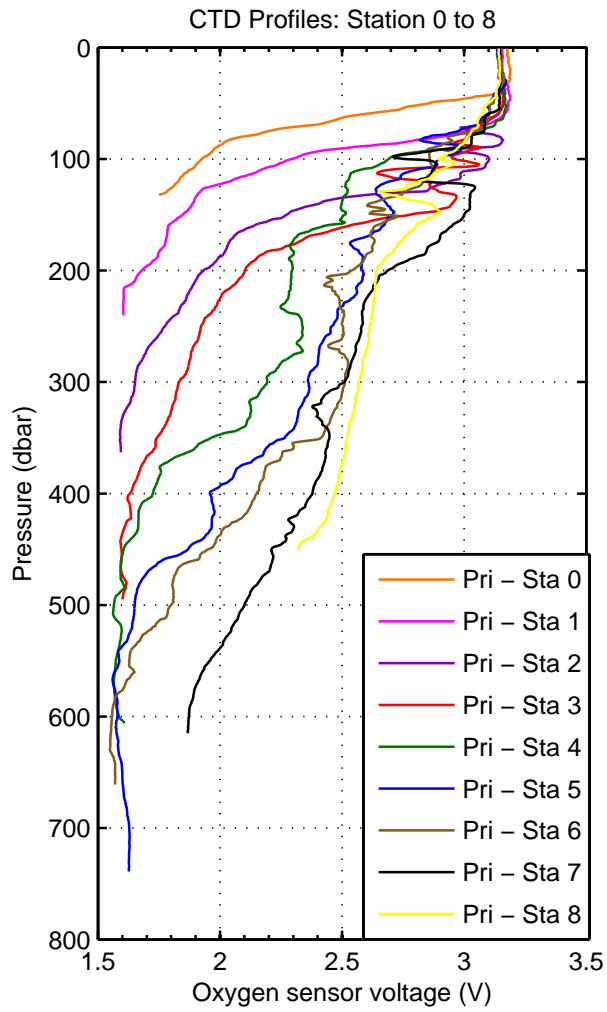


Figure 3: WS0415

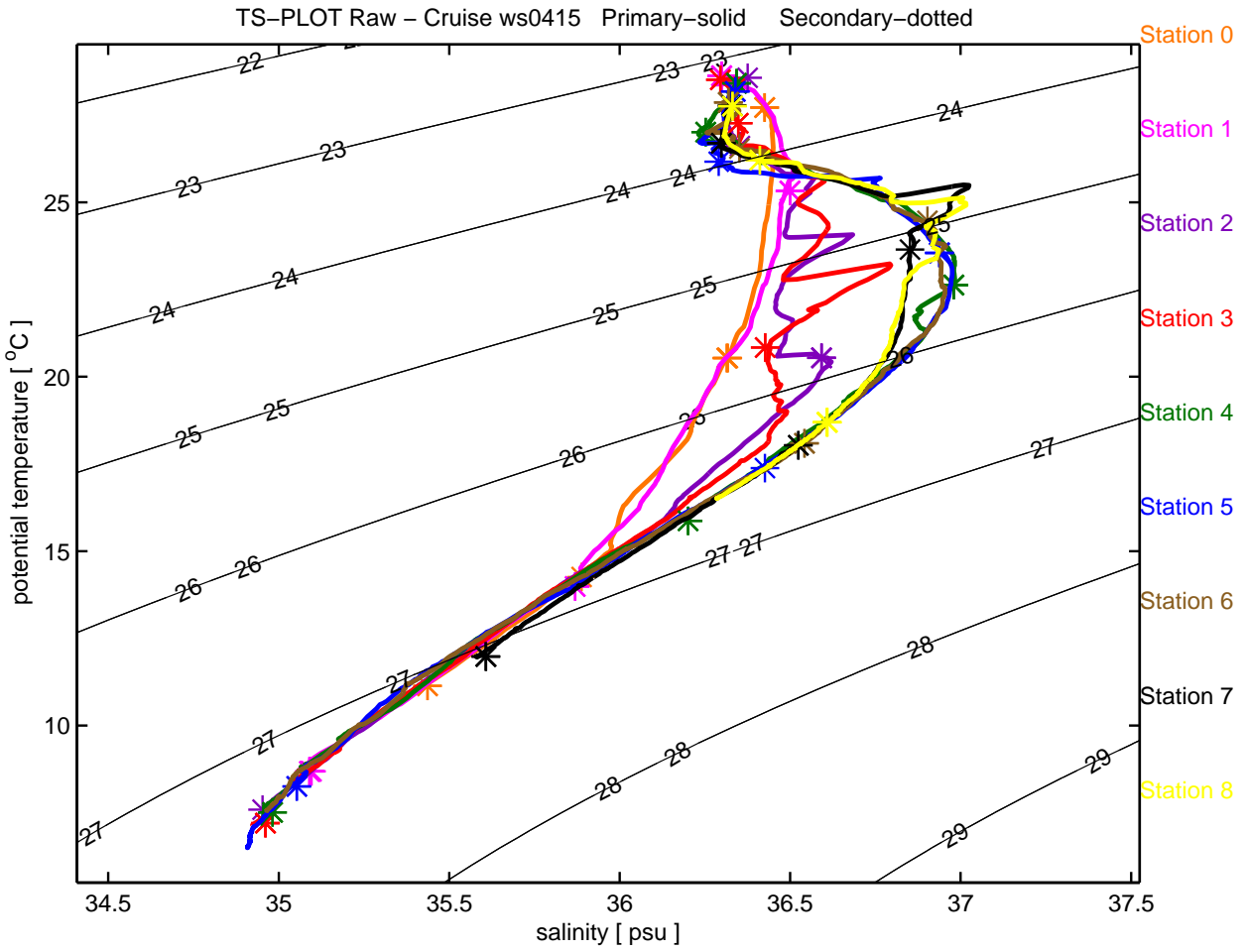


Figure 4: WS0415

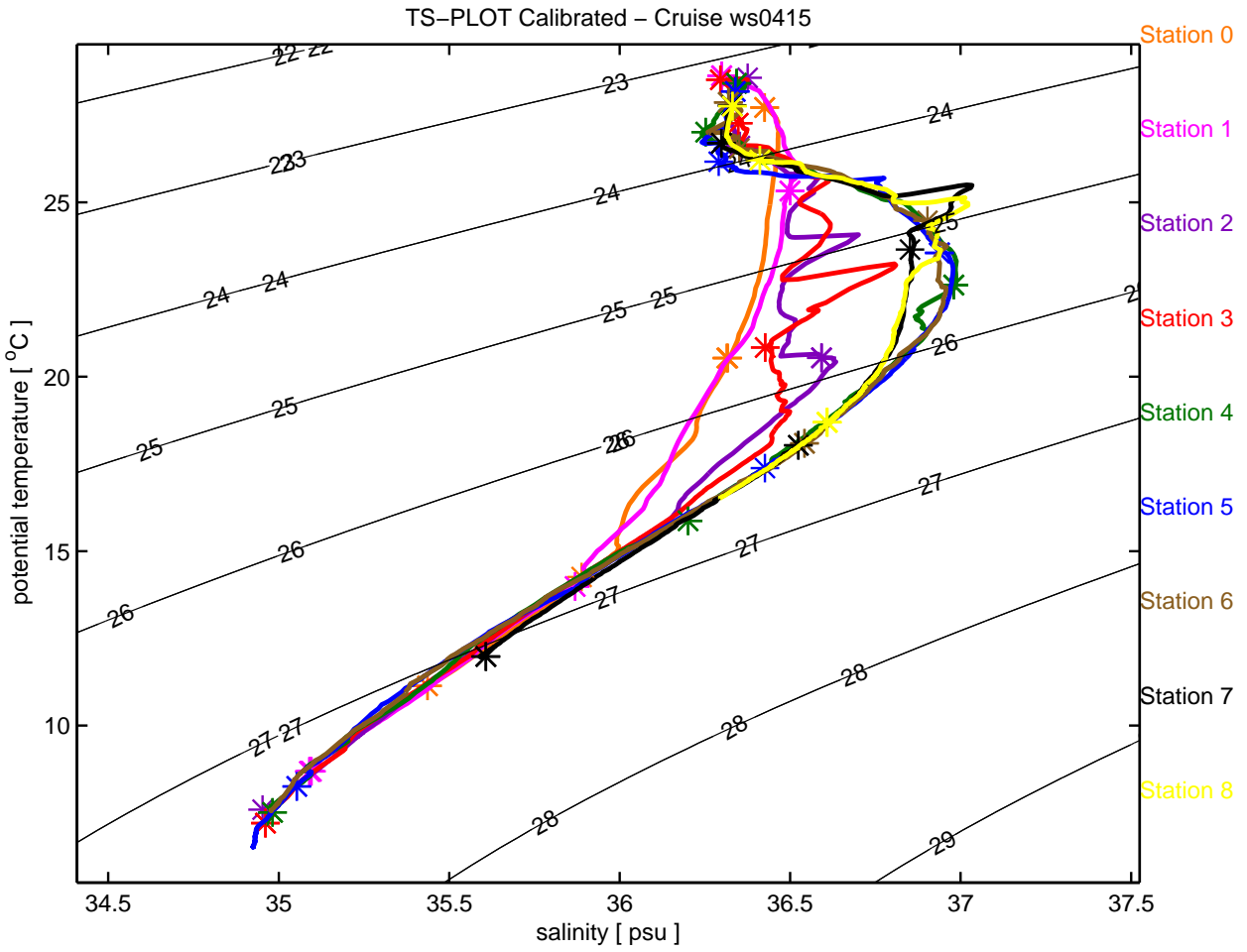


Figure 5: WS0415

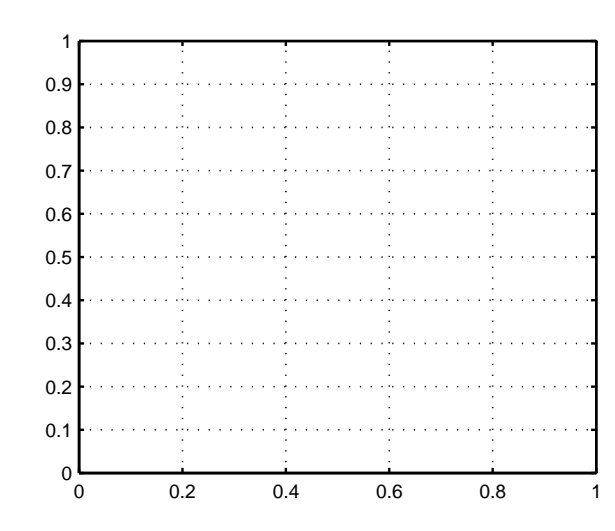
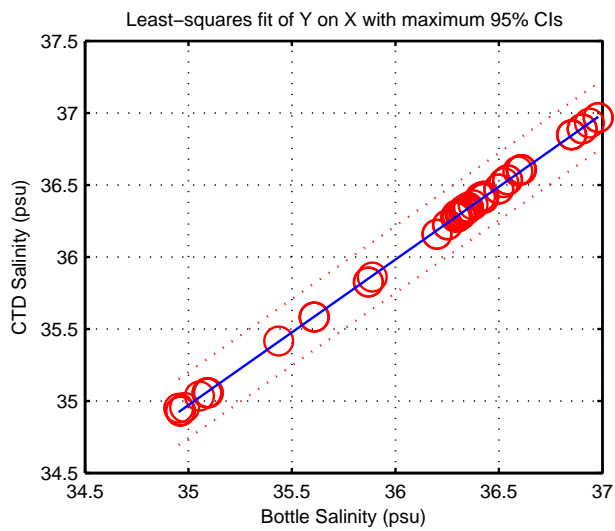
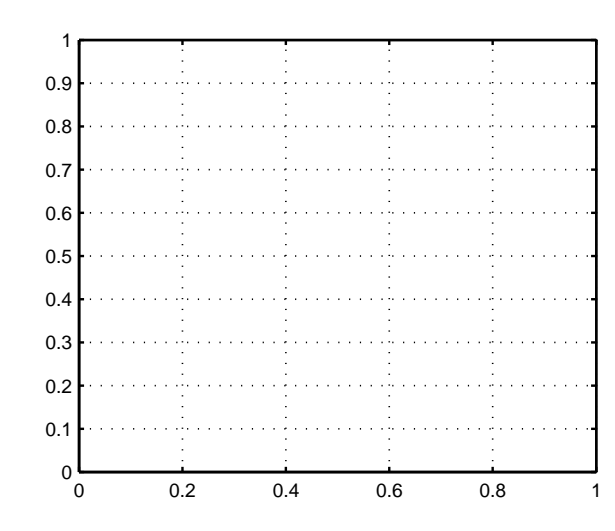
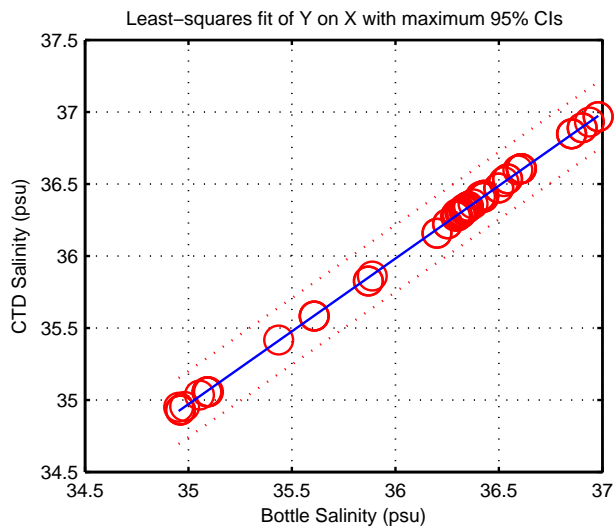
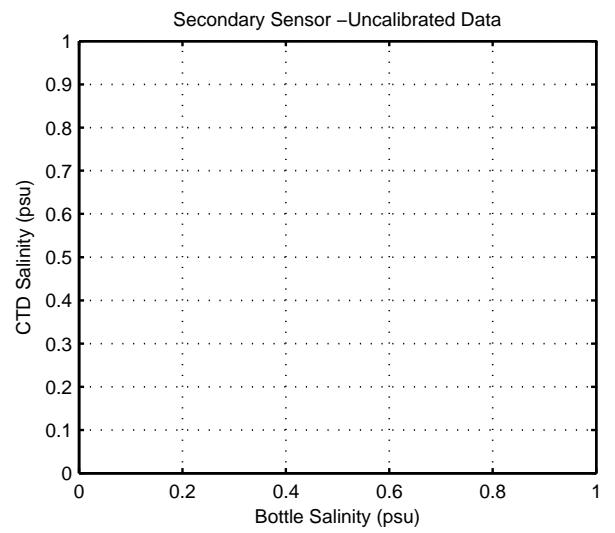
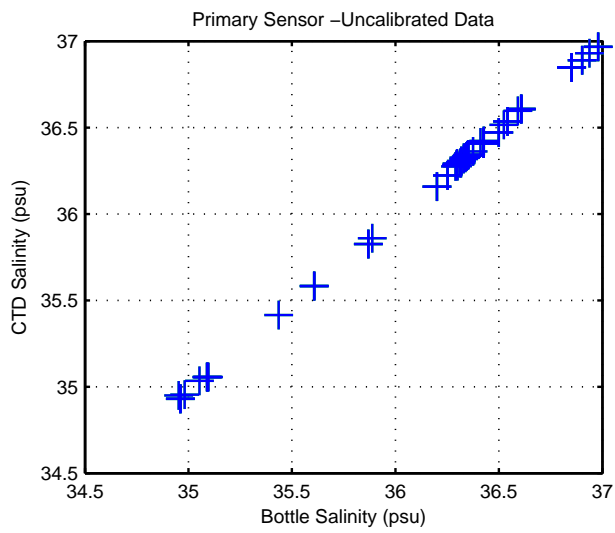


Figure 6: WS0415

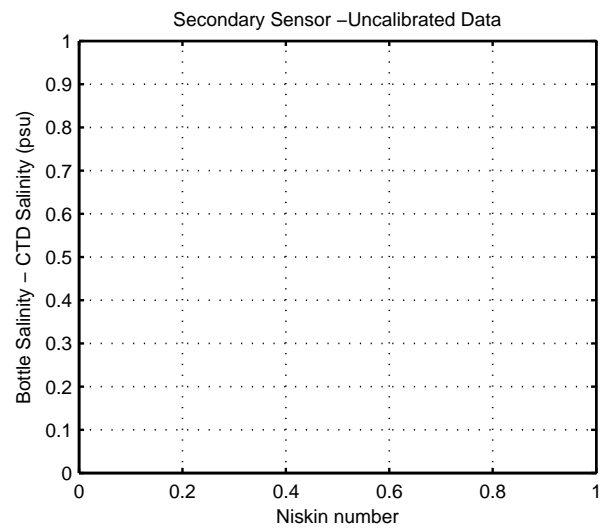
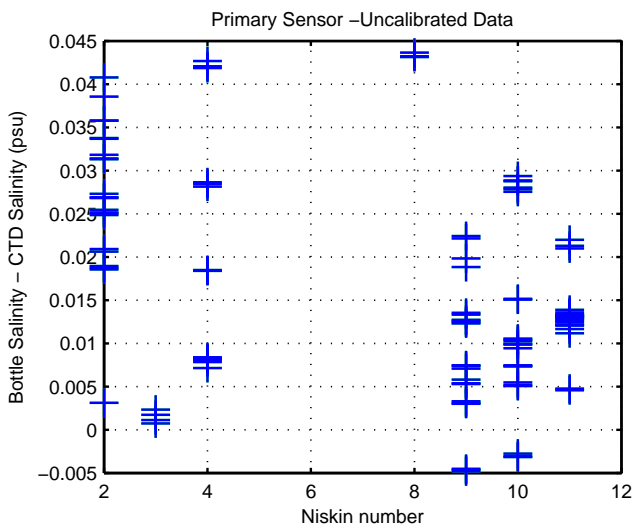
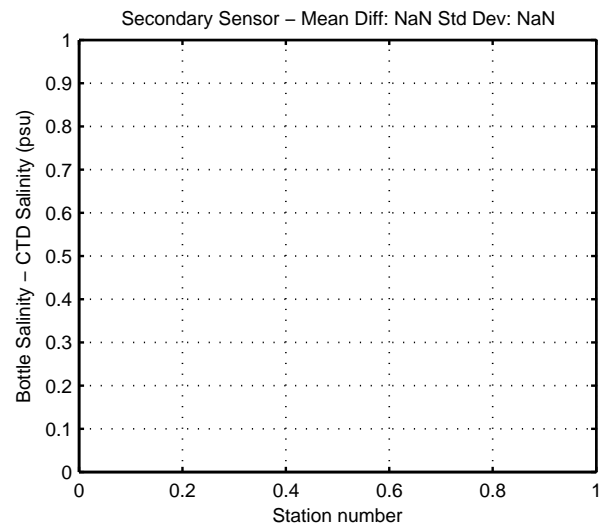
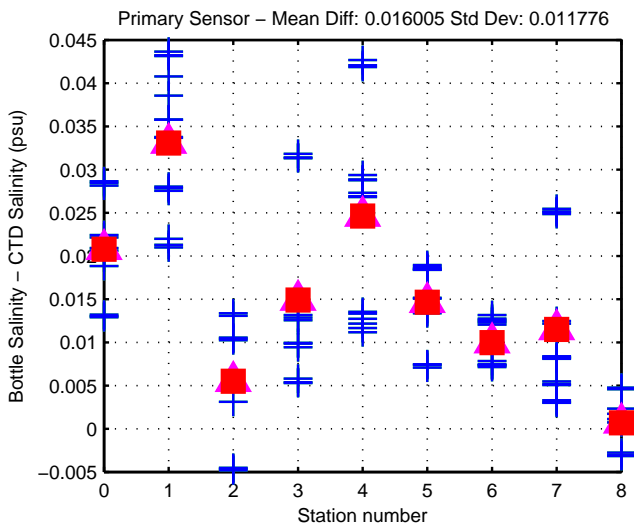
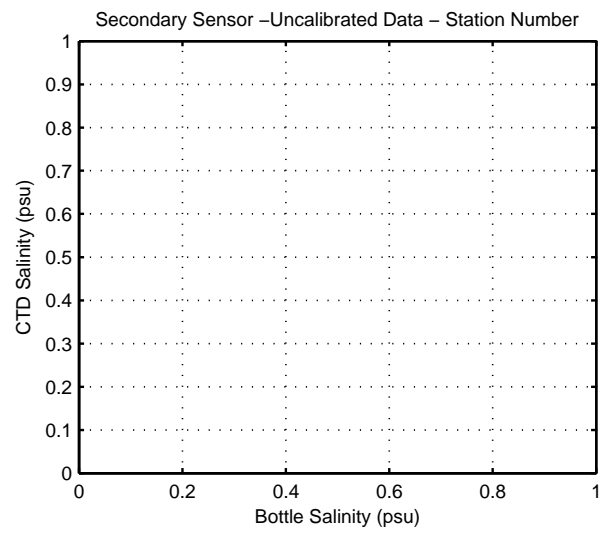
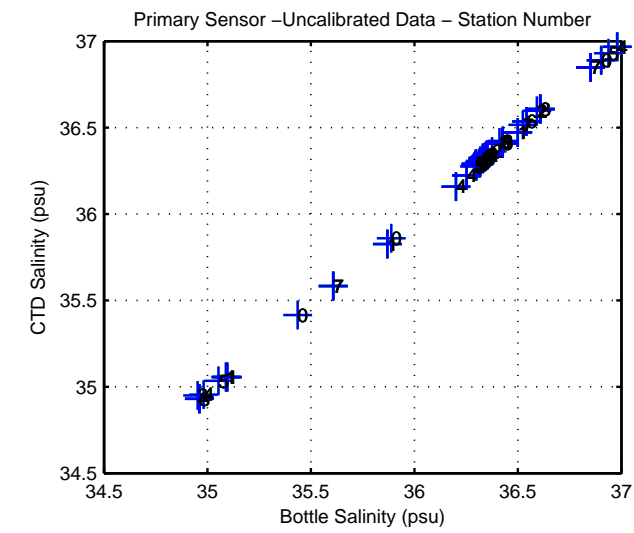


Figure 7: WS0415

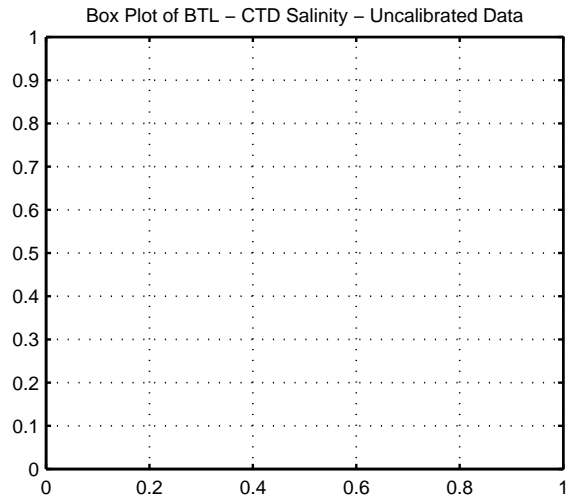
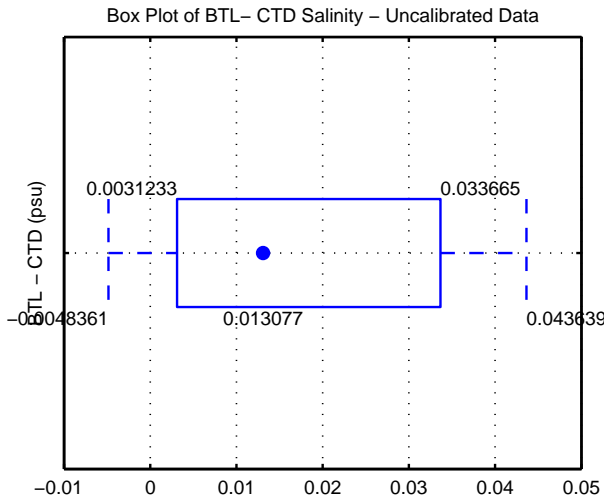
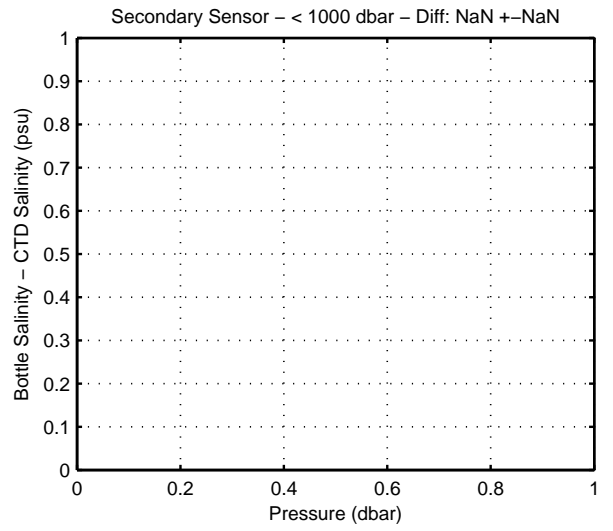
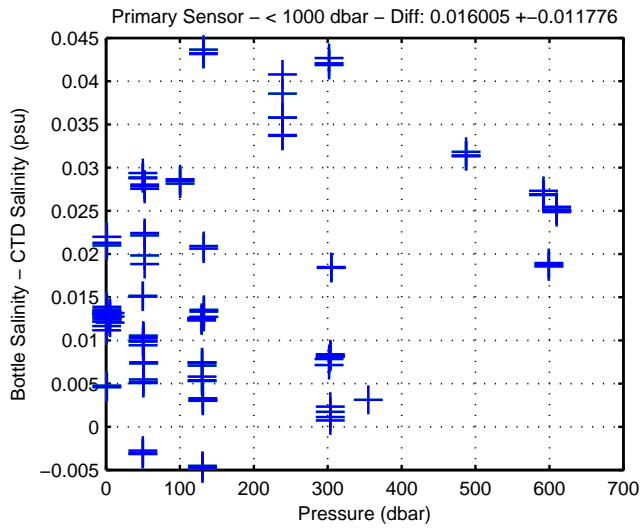
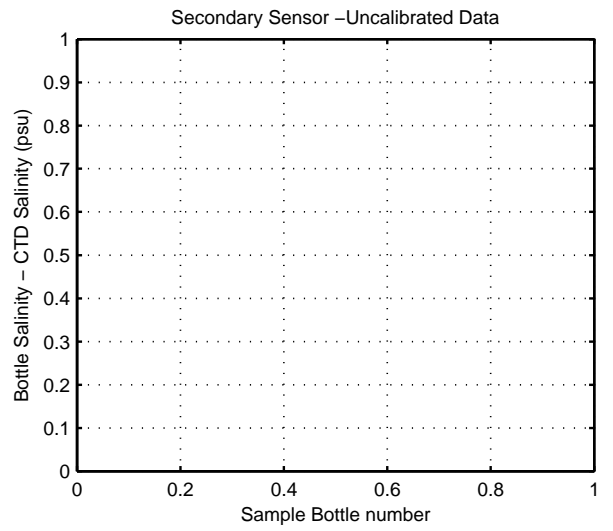
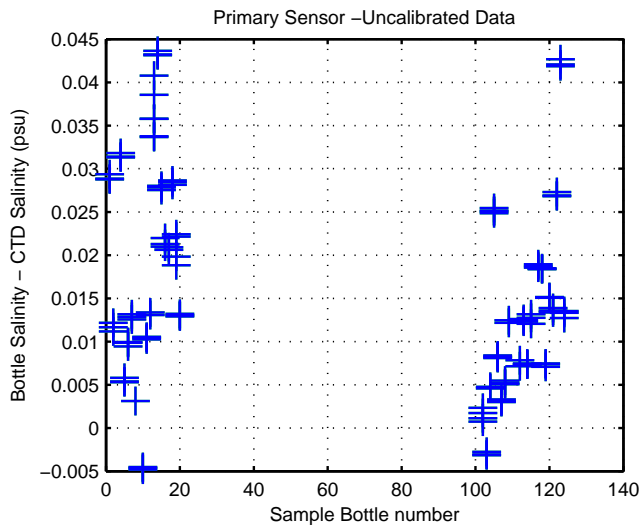


Figure 8: WS0415

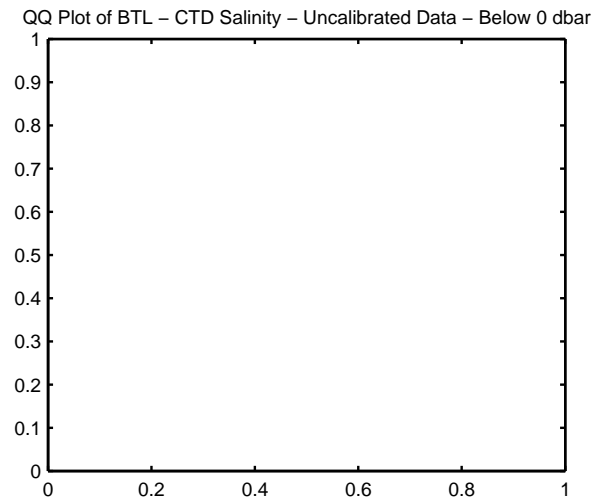
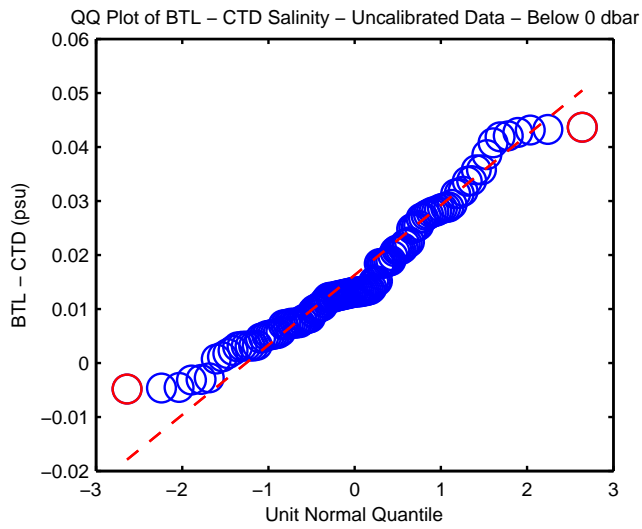
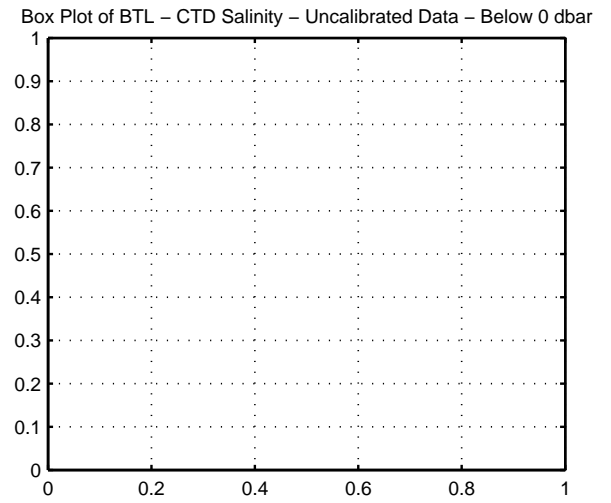
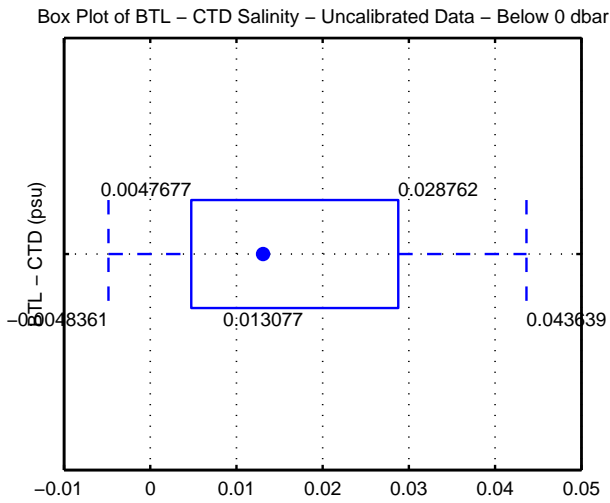
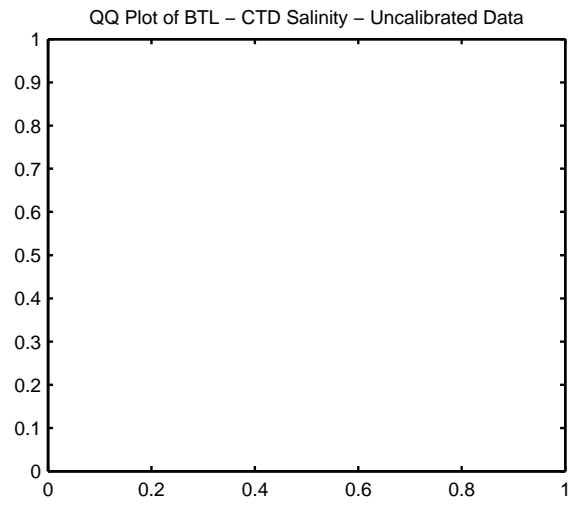
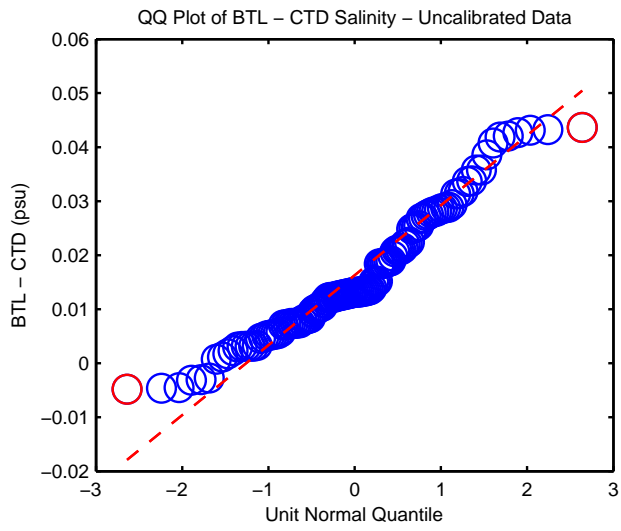


Figure 9: WS0415

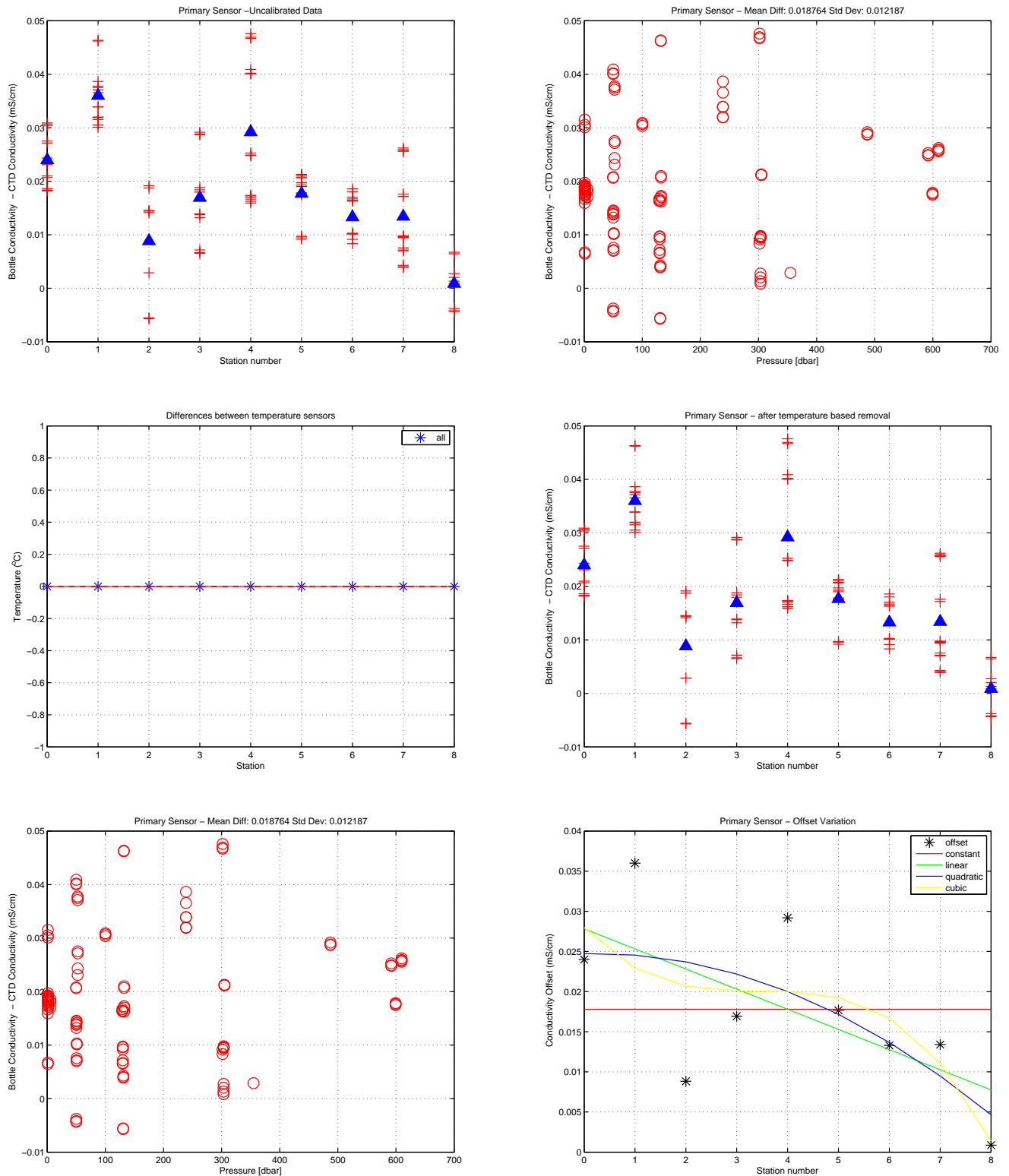


Figure 10: WS0415. Conductivity Calibration

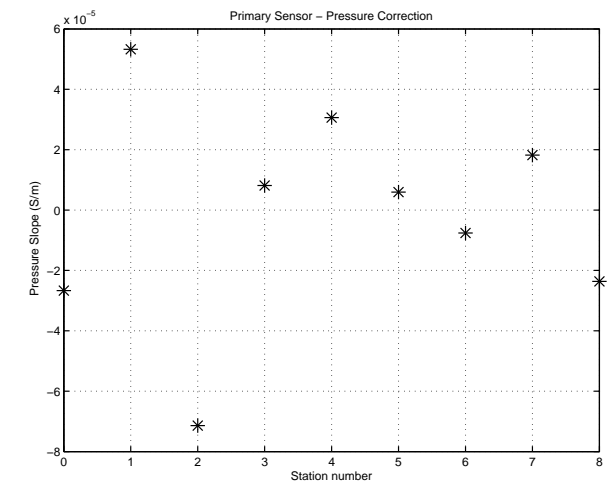
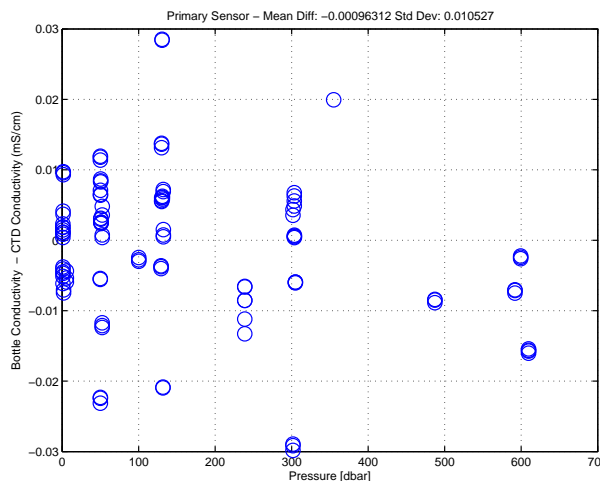
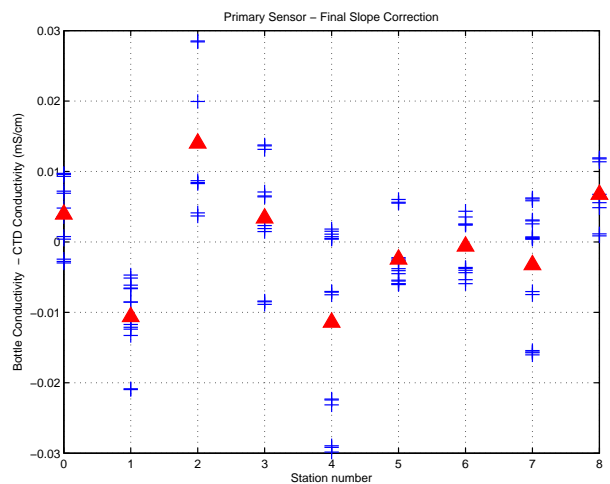
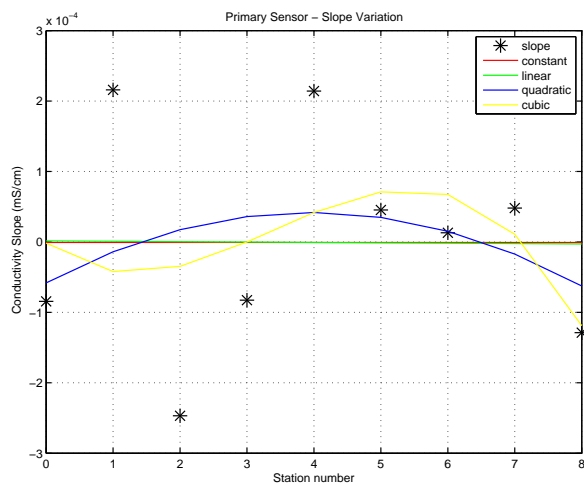
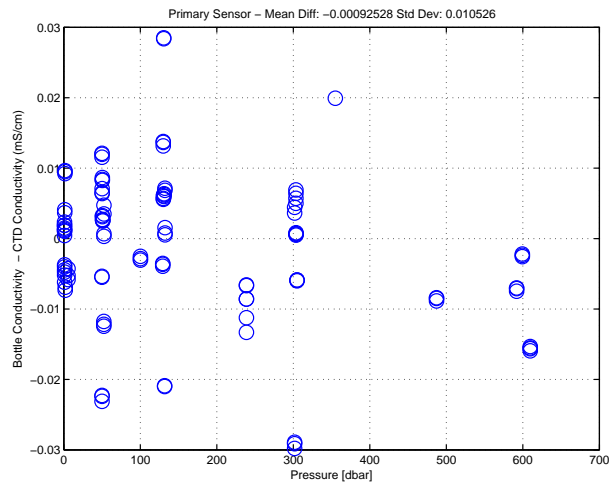
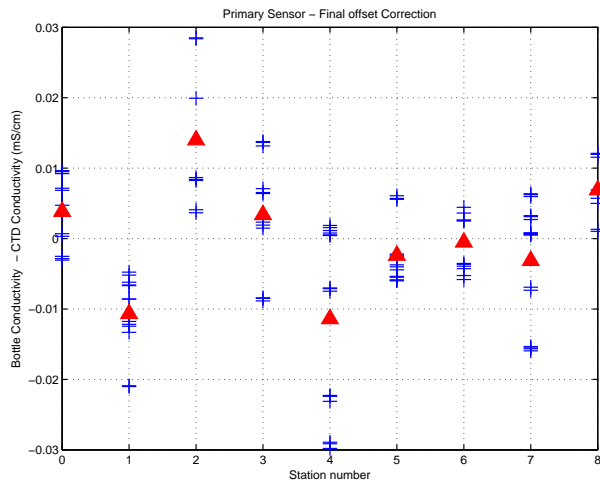


Figure 11: WS0415. Conductivity Calibration (cont.)

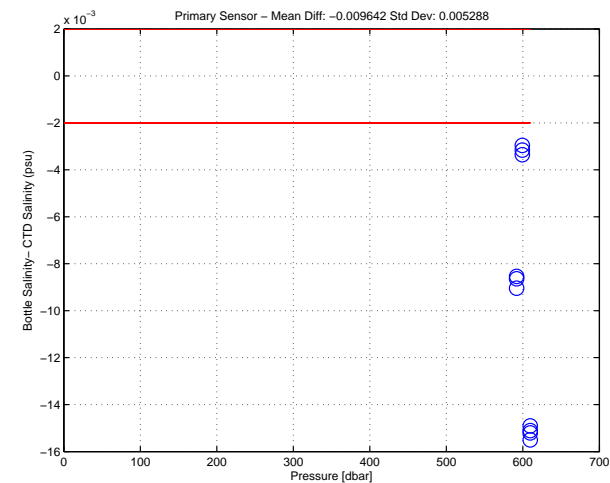
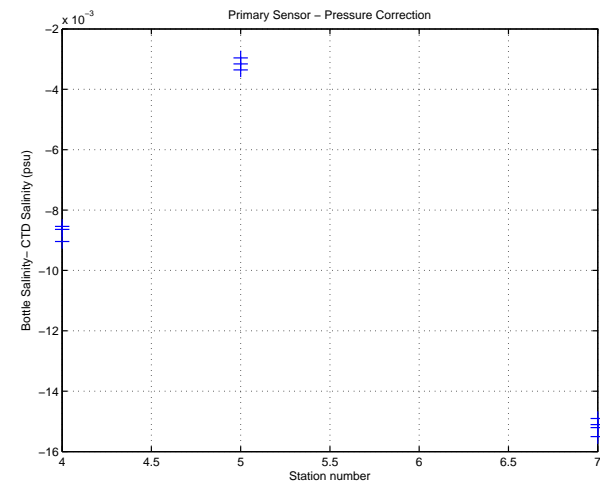
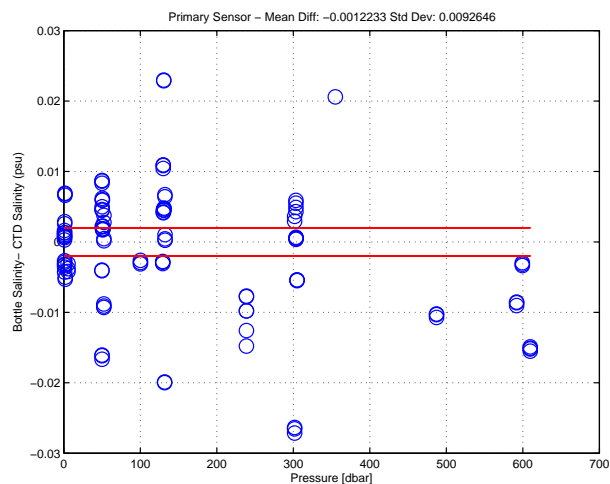
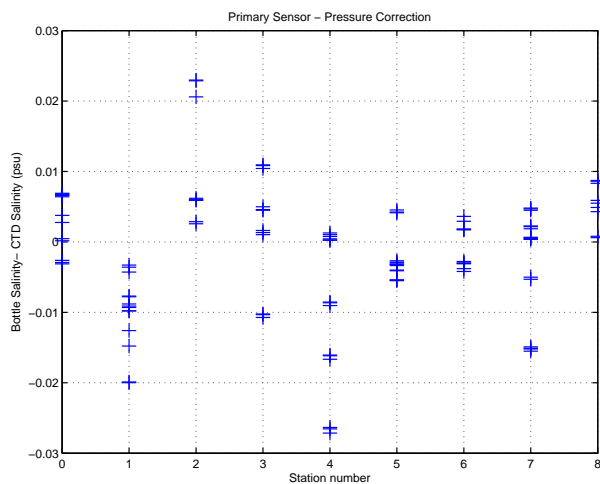
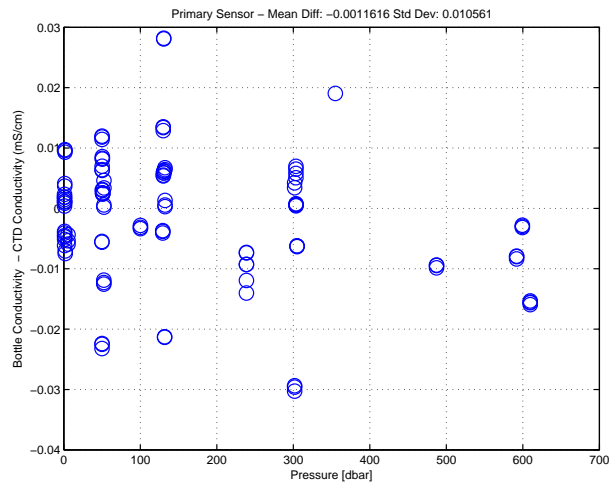
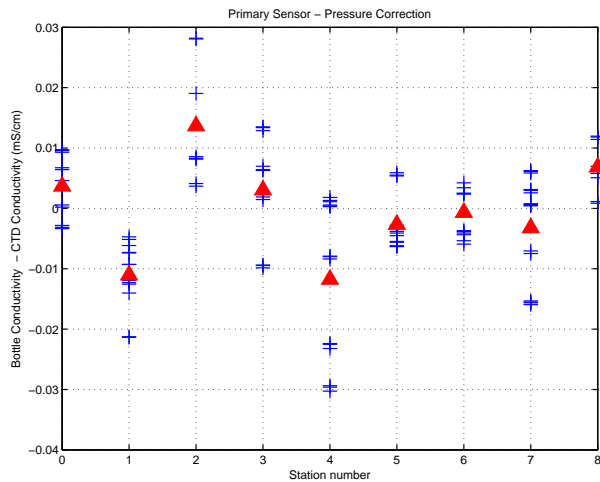


Figure 12: WS0415. Conductivity Calibration (cont.)

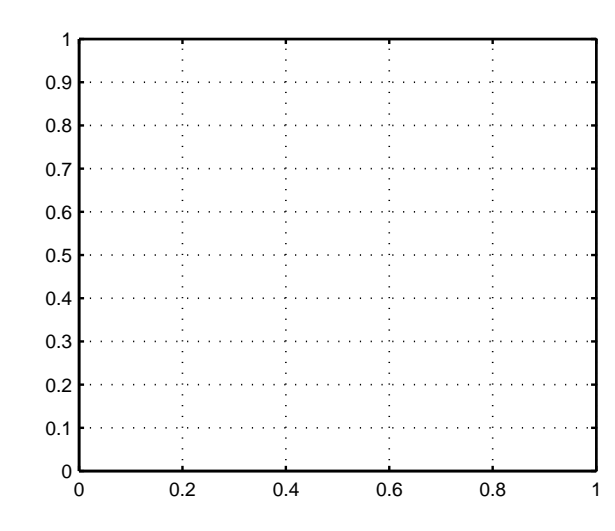
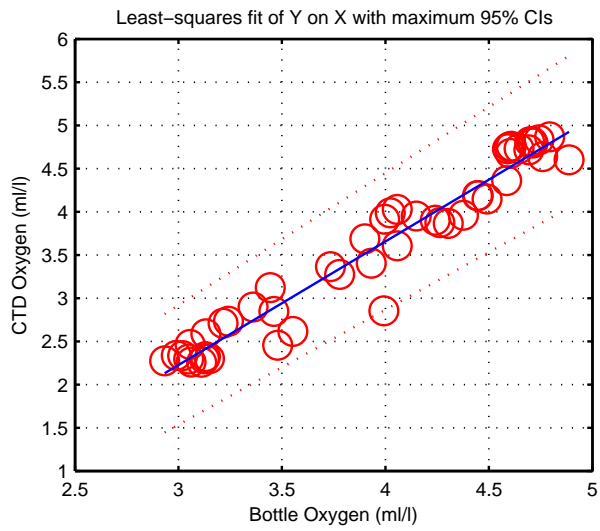
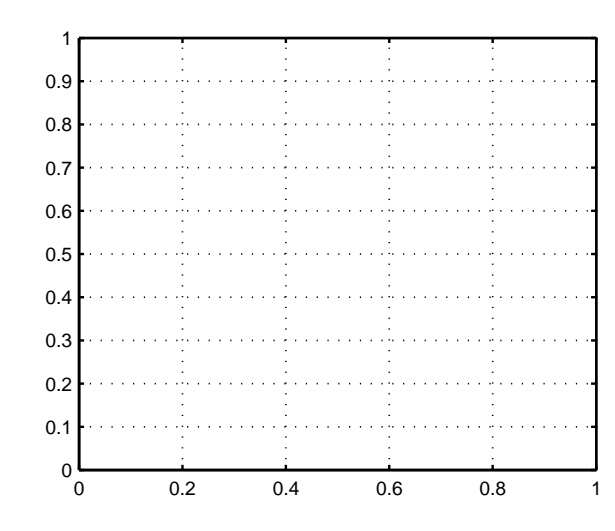
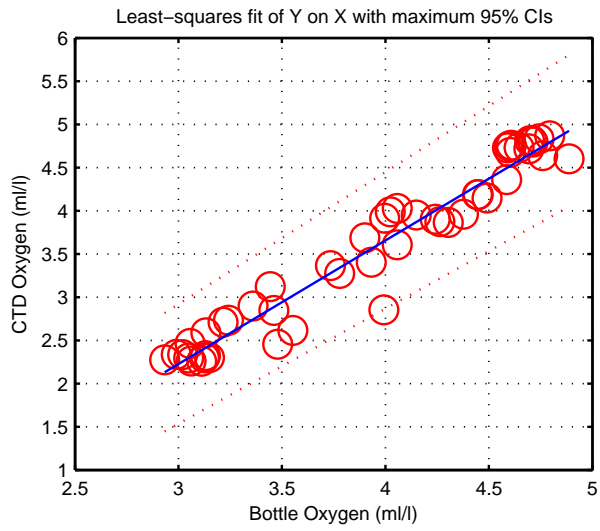
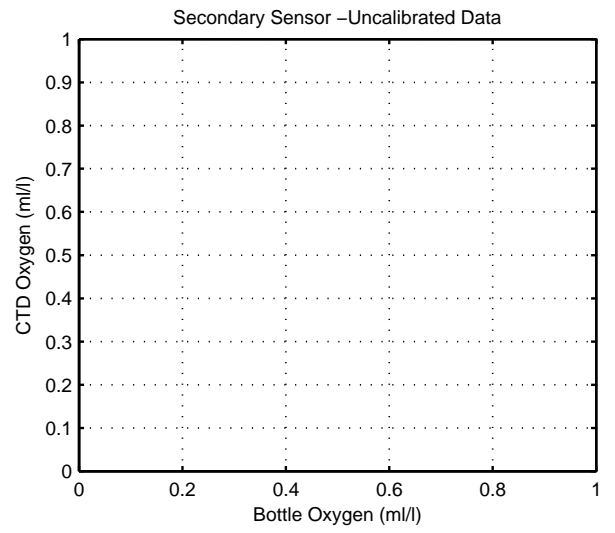
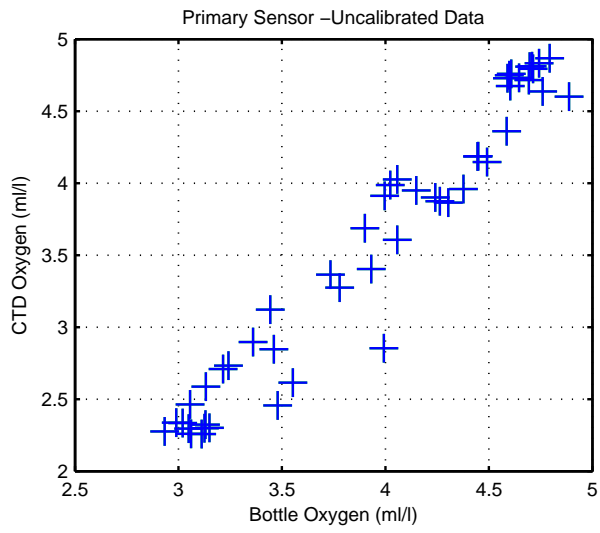


Figure 13: WS0415

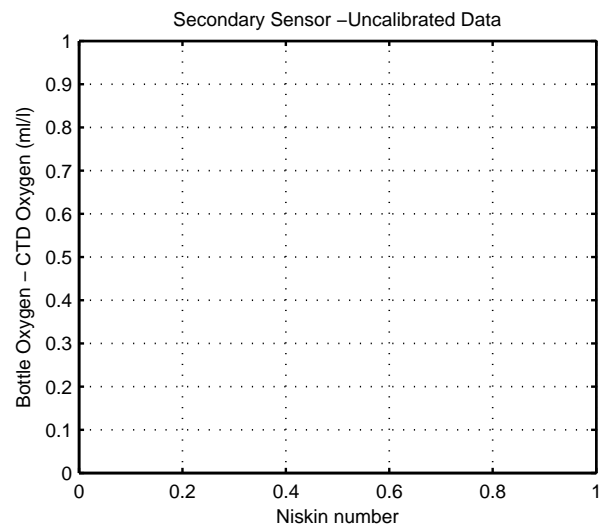
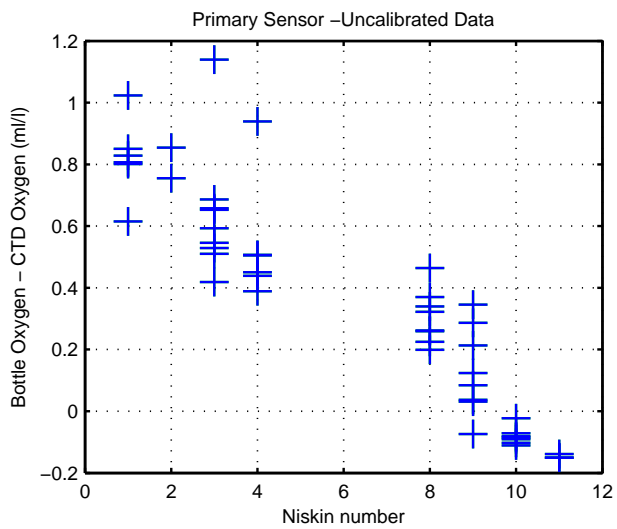
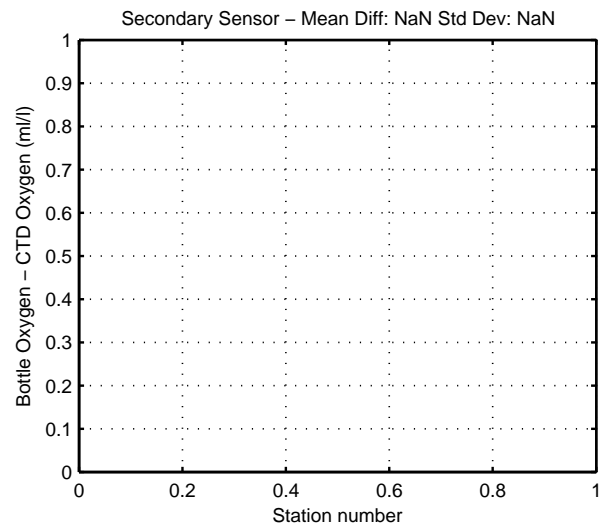
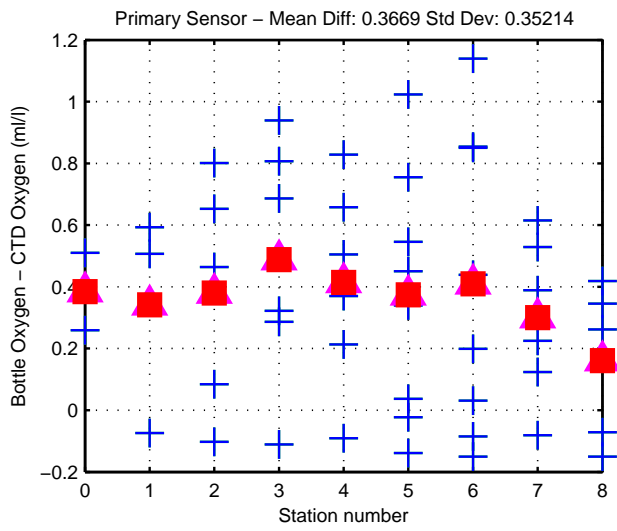
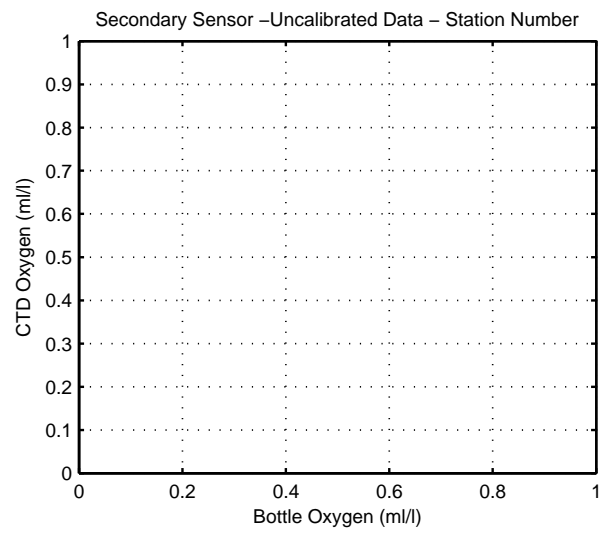
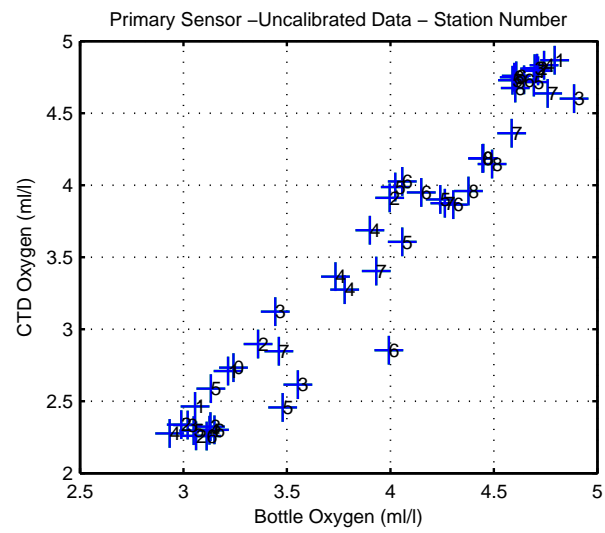


Figure 14: WS0415

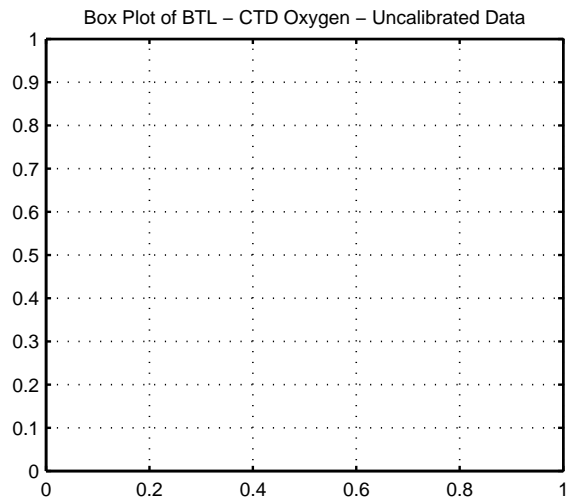
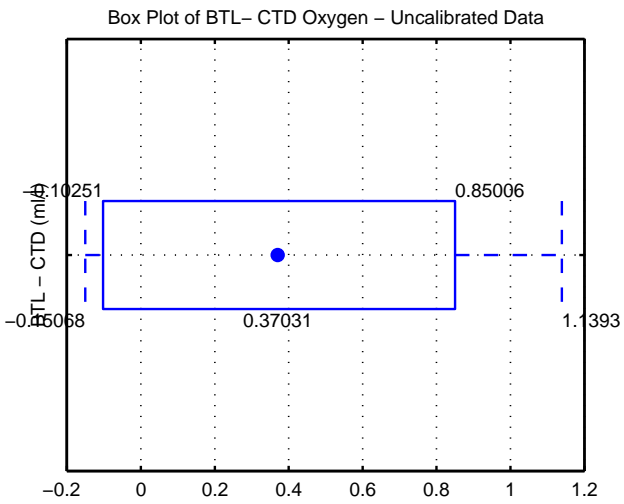
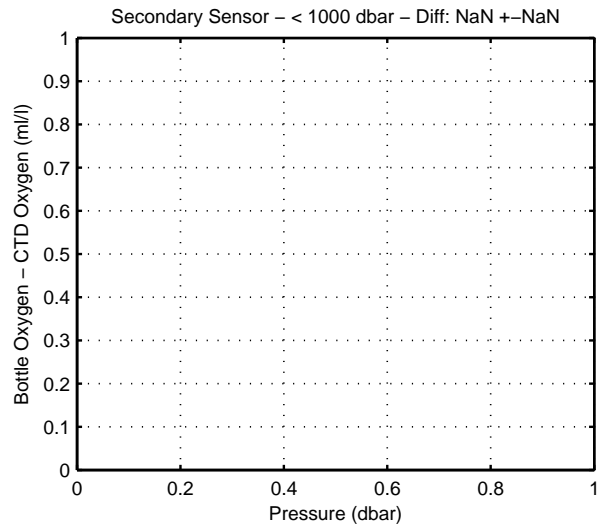
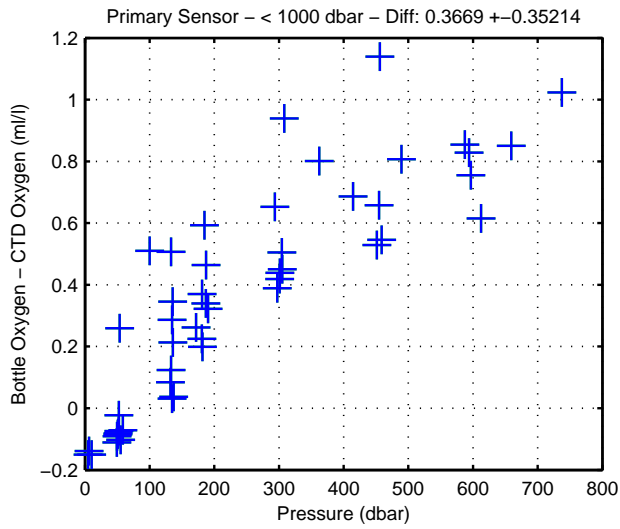
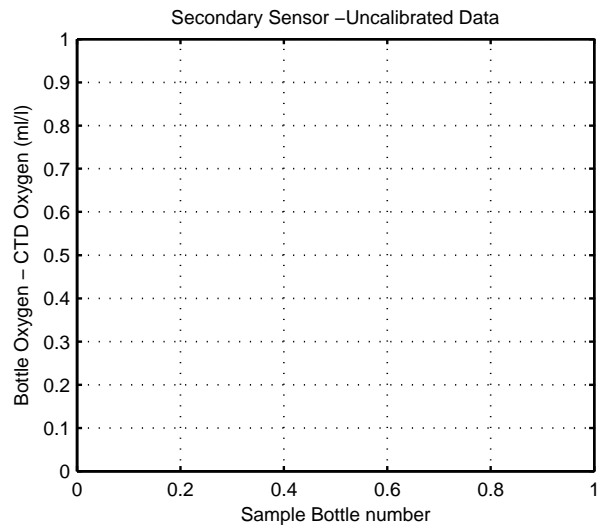
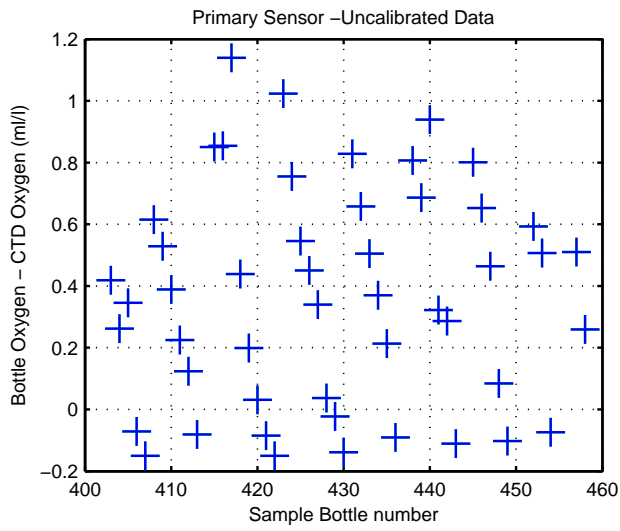


Figure 15: WS0415

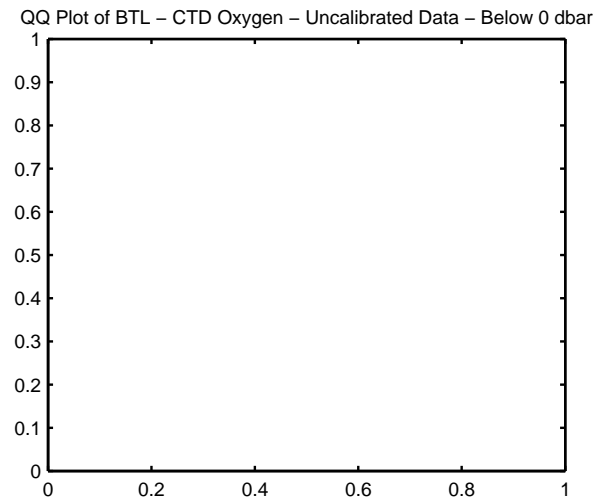
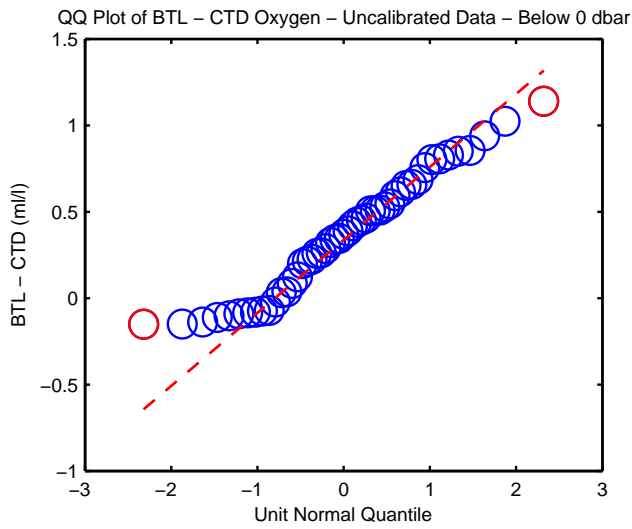
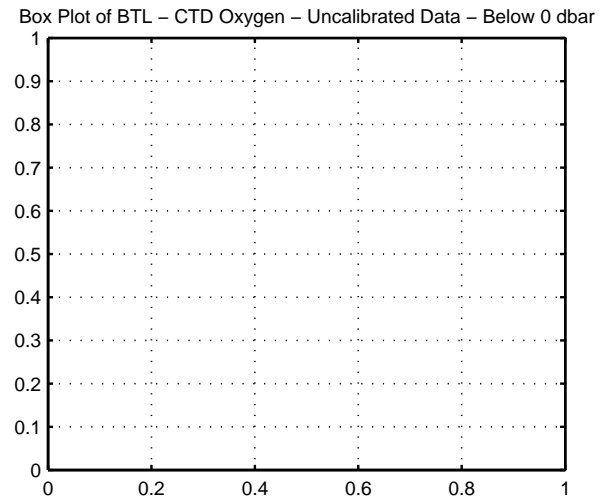
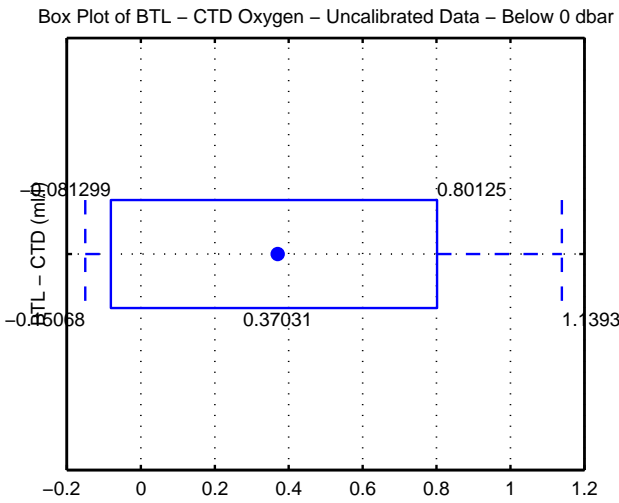
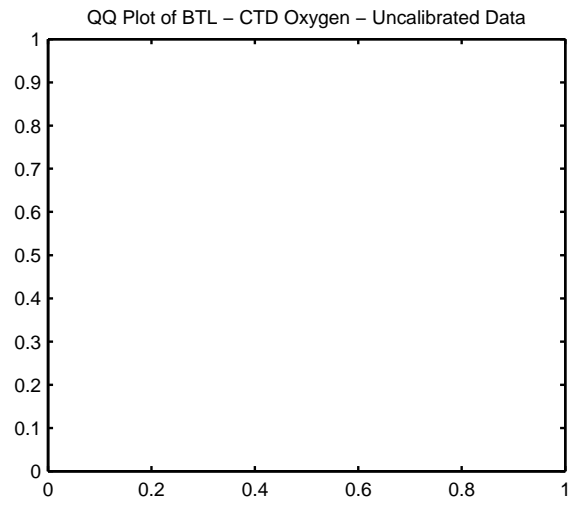
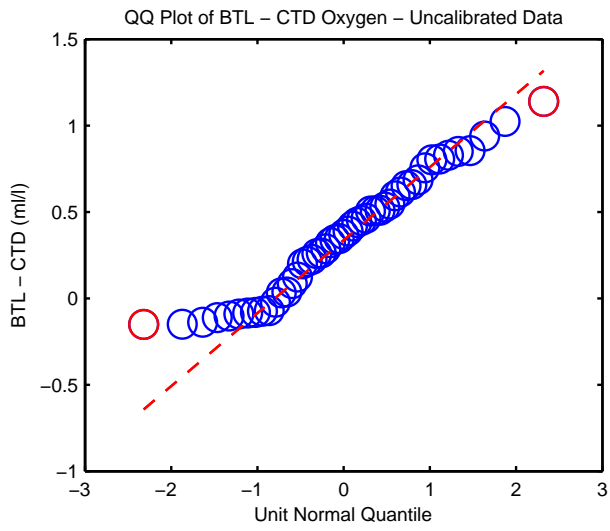


Figure 16: WS0415

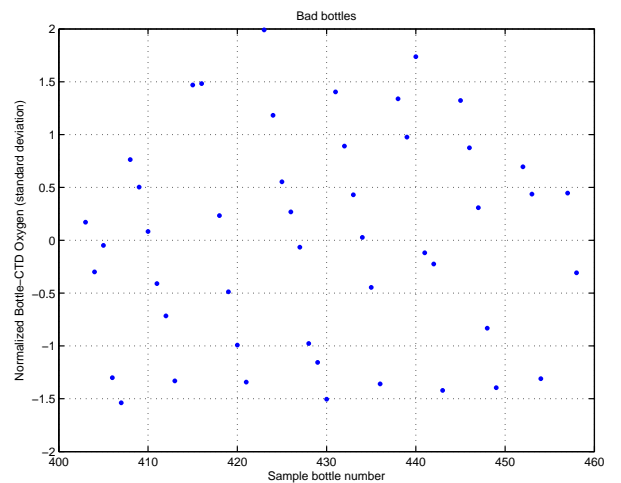
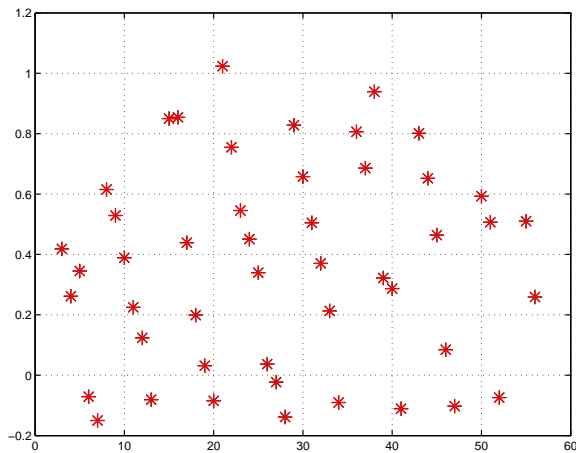
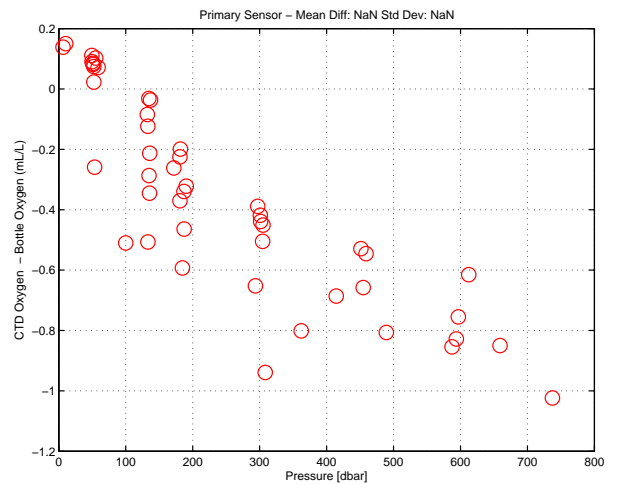
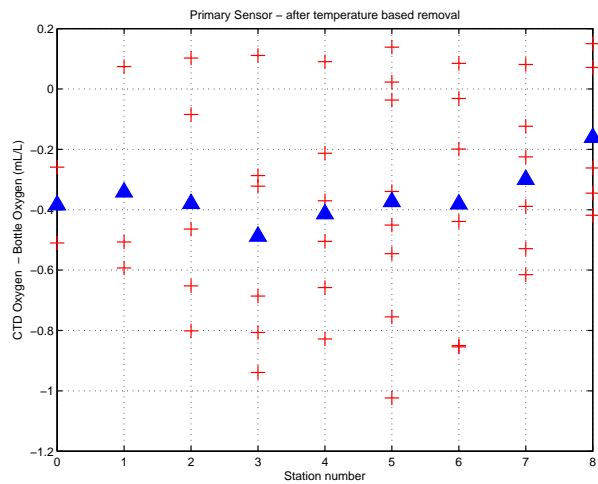
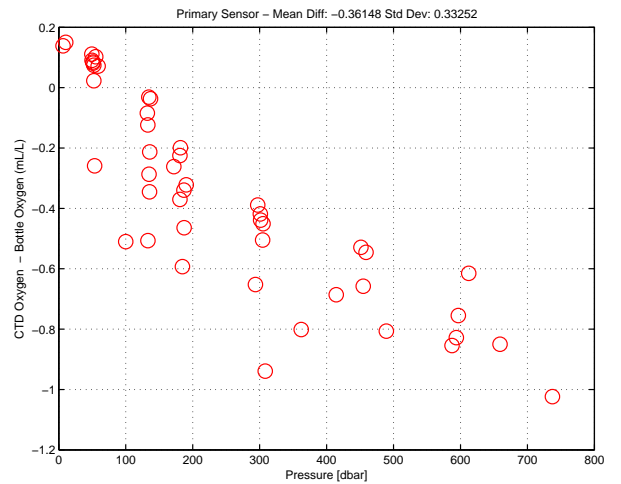
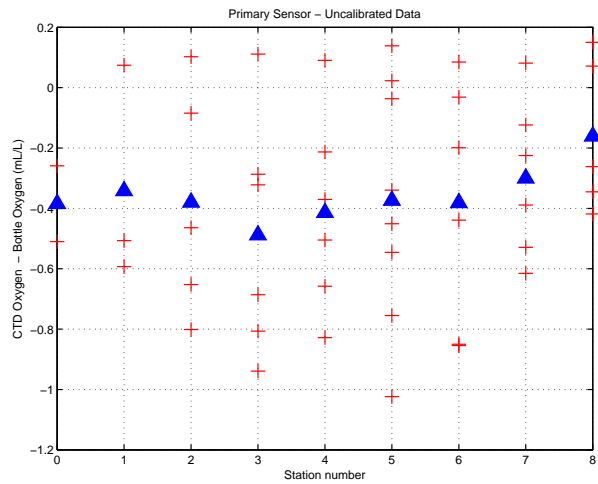


Figure 17: WS0415. Oxygen Calibration

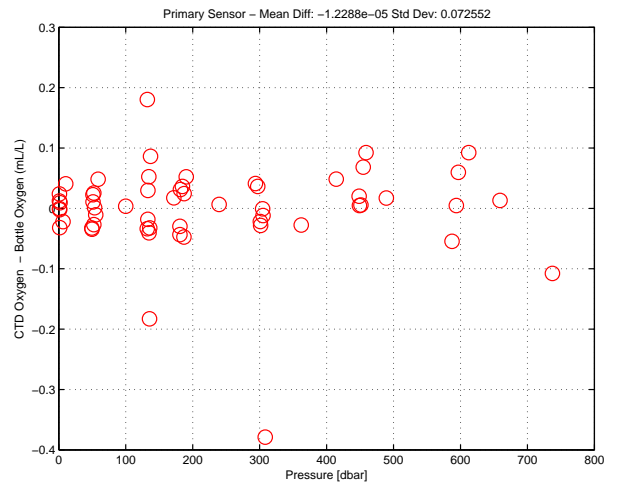
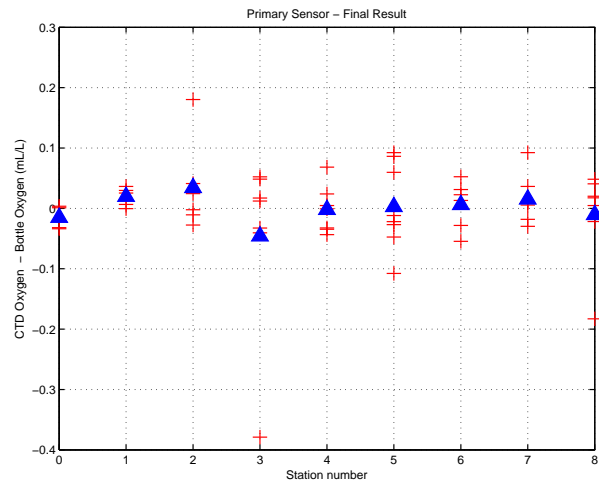


Figure 18: WS0415. Oxygen Calibration (cont.)

Florida Straits R/V FG Walton Smith
 CTD Station 0 (CTD000)
 Latitude 27.005 N Longitude 79.932 W
 05-Jun-2004 16:53 Z

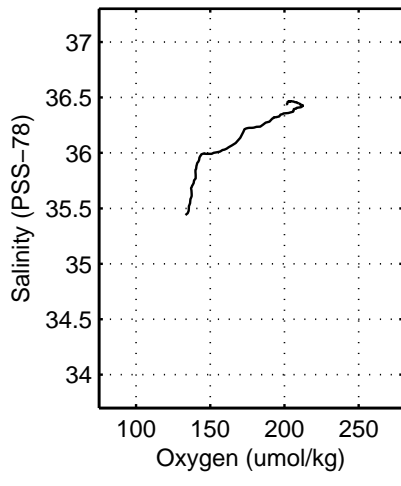
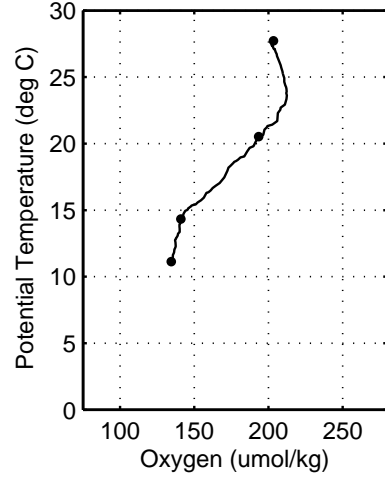
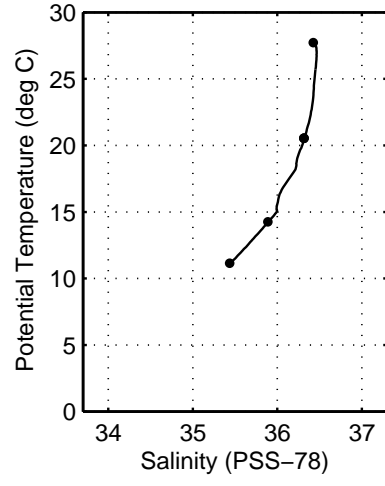
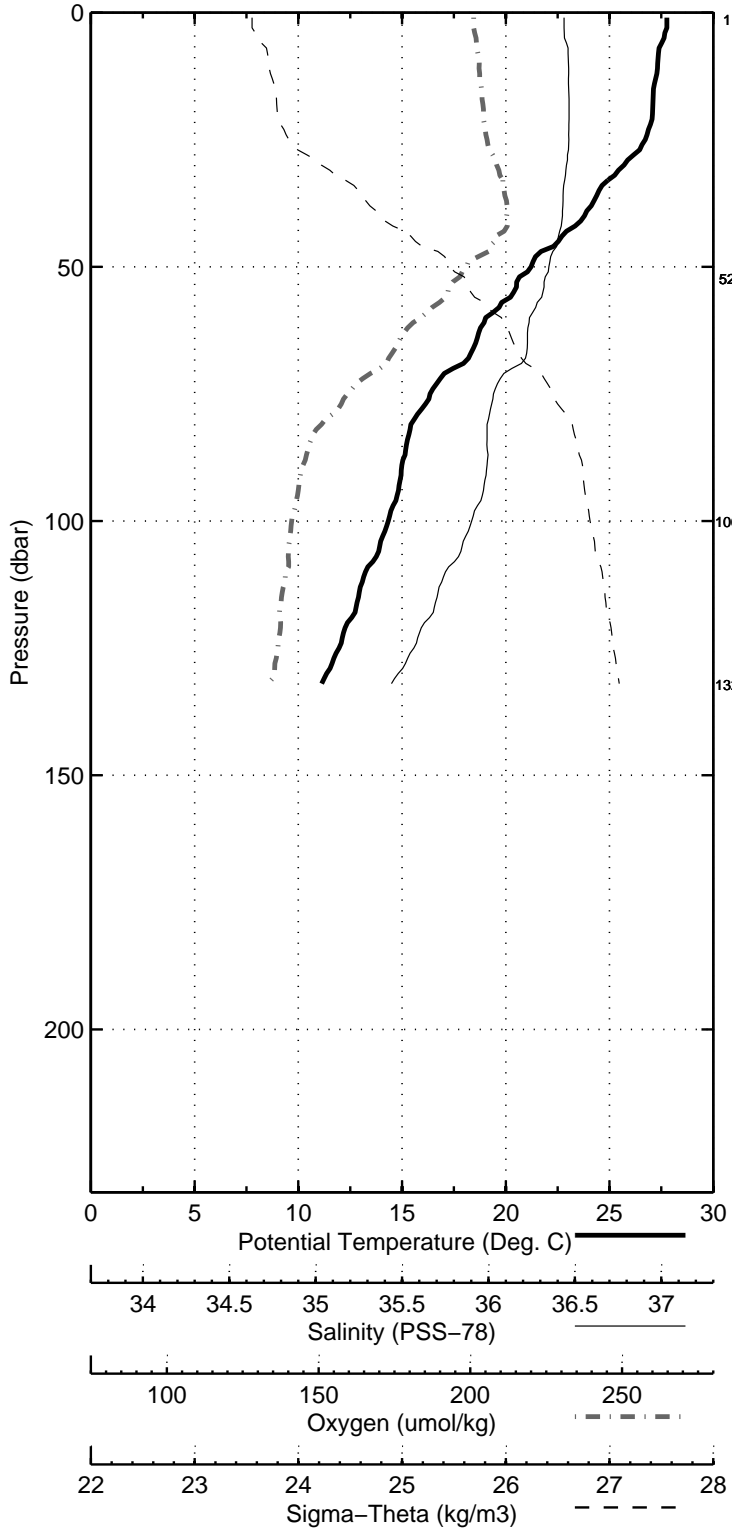


Figure 19: WS0415

Florida Straits R/V FG Walton Smith
 CTD Station 1 (CTD001)
 Latitude 27.007 N Longitude 79.869 W
 05-Jun-2004 15:54 Z

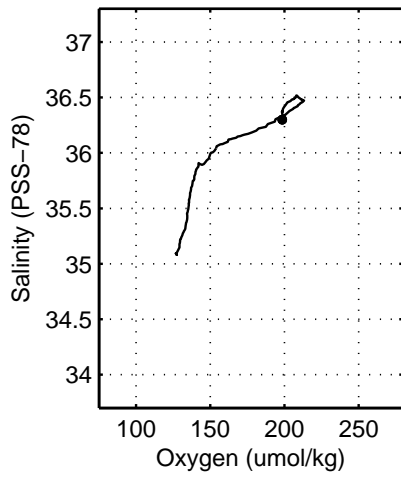
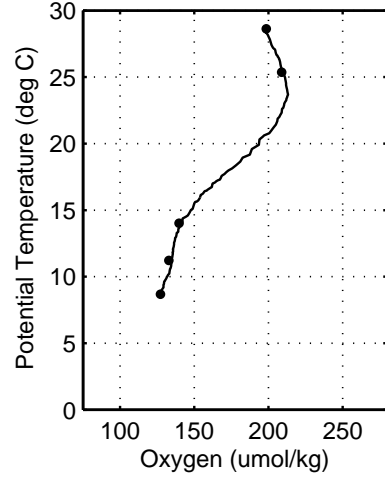
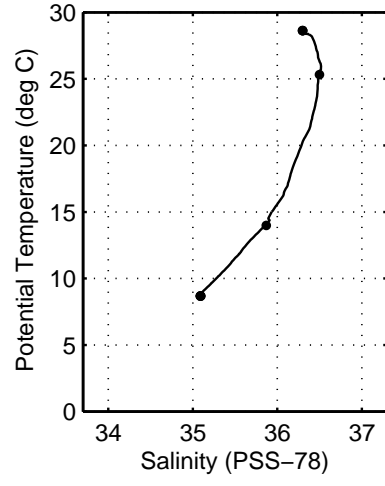
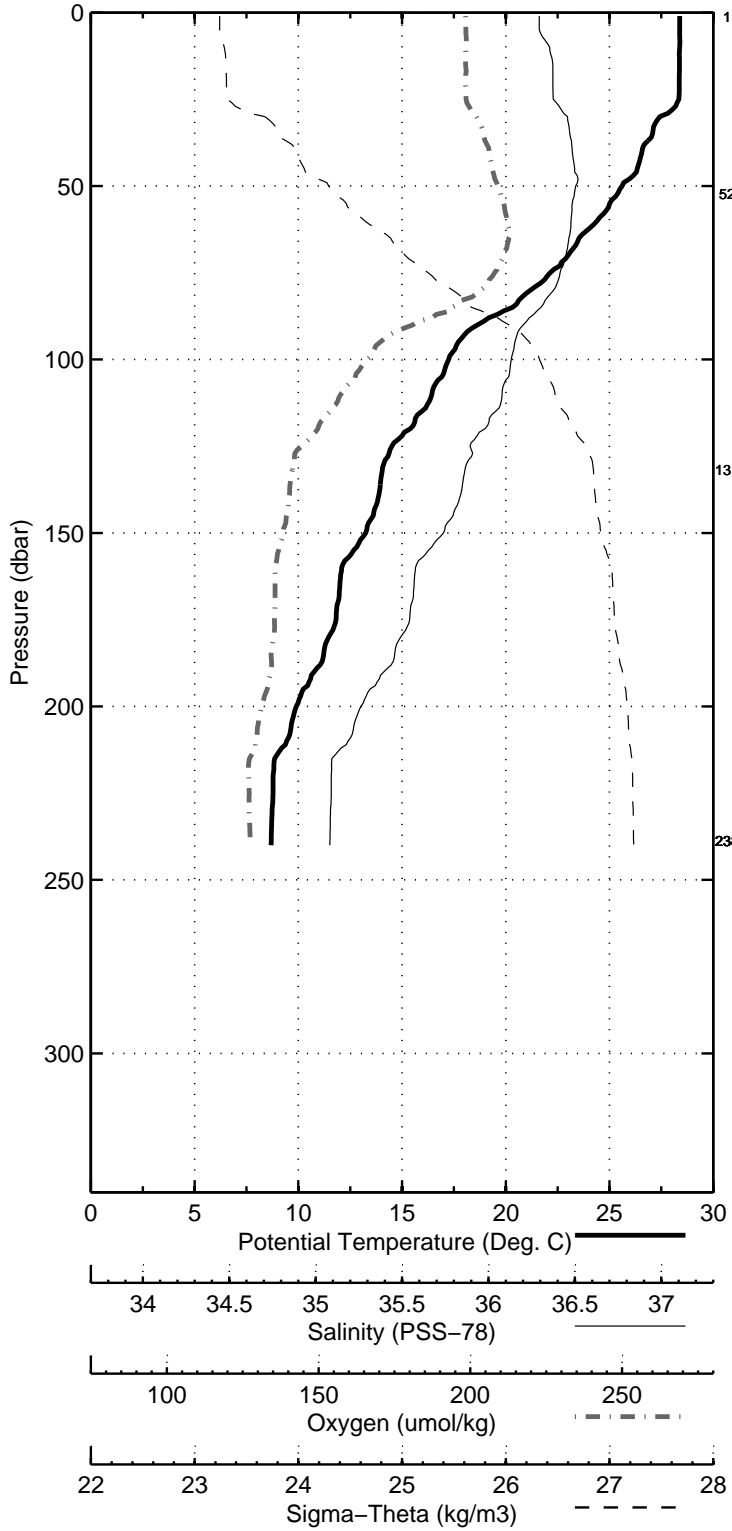


Figure 20: WS0415

Florida Straits R/V FG Walton Smith
 CTD Station 2 (CTD002)
 Latitude 27.006 N Longitude 79.784 W
 05-Jun-2004 14:42 Z

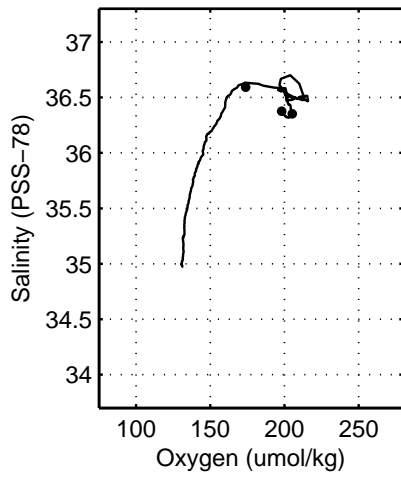
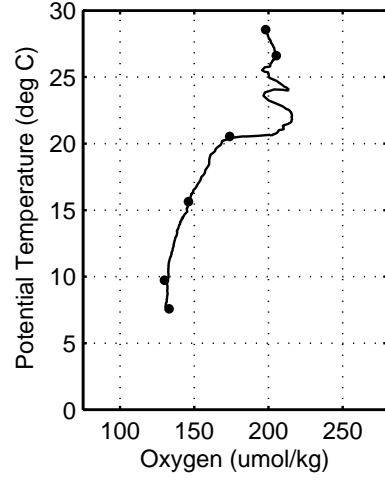
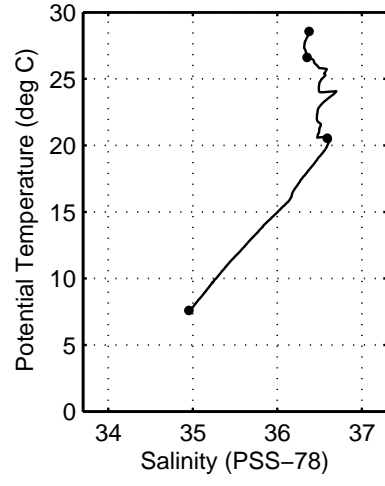
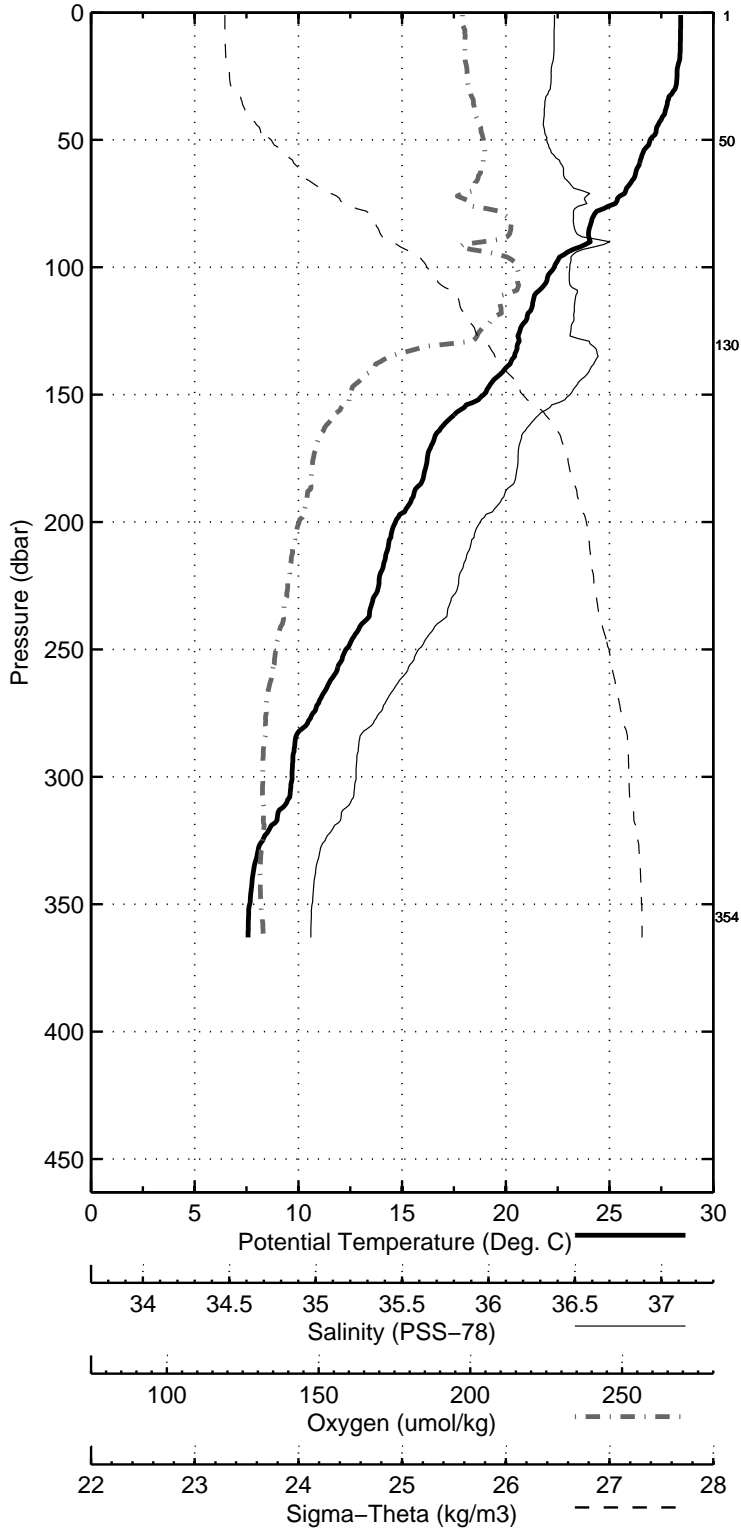


Figure 21: WS0415

Florida Straits R/V FG Walton Smith
 CTD Station 3 (CTD003)
 Latitude 27.007 N Longitude 79.686 W
 05-Jun-2004 13:20 Z

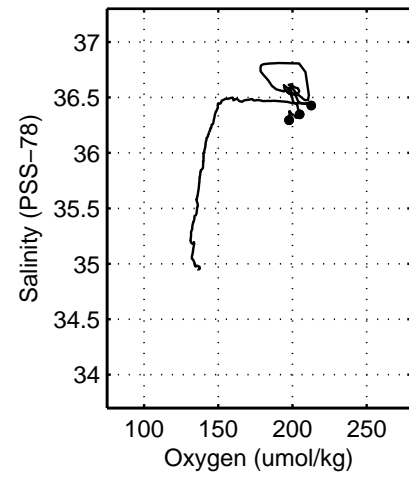
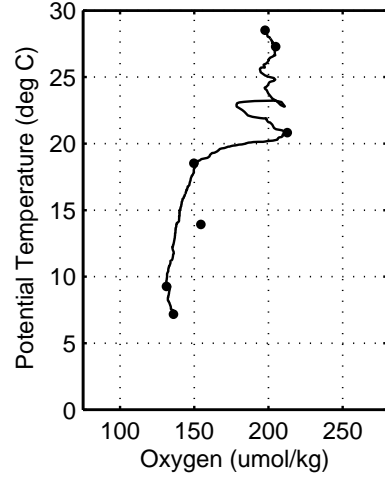
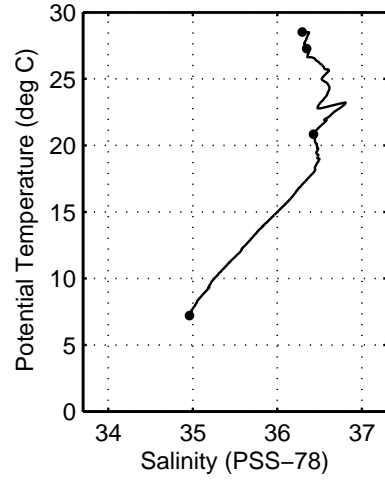
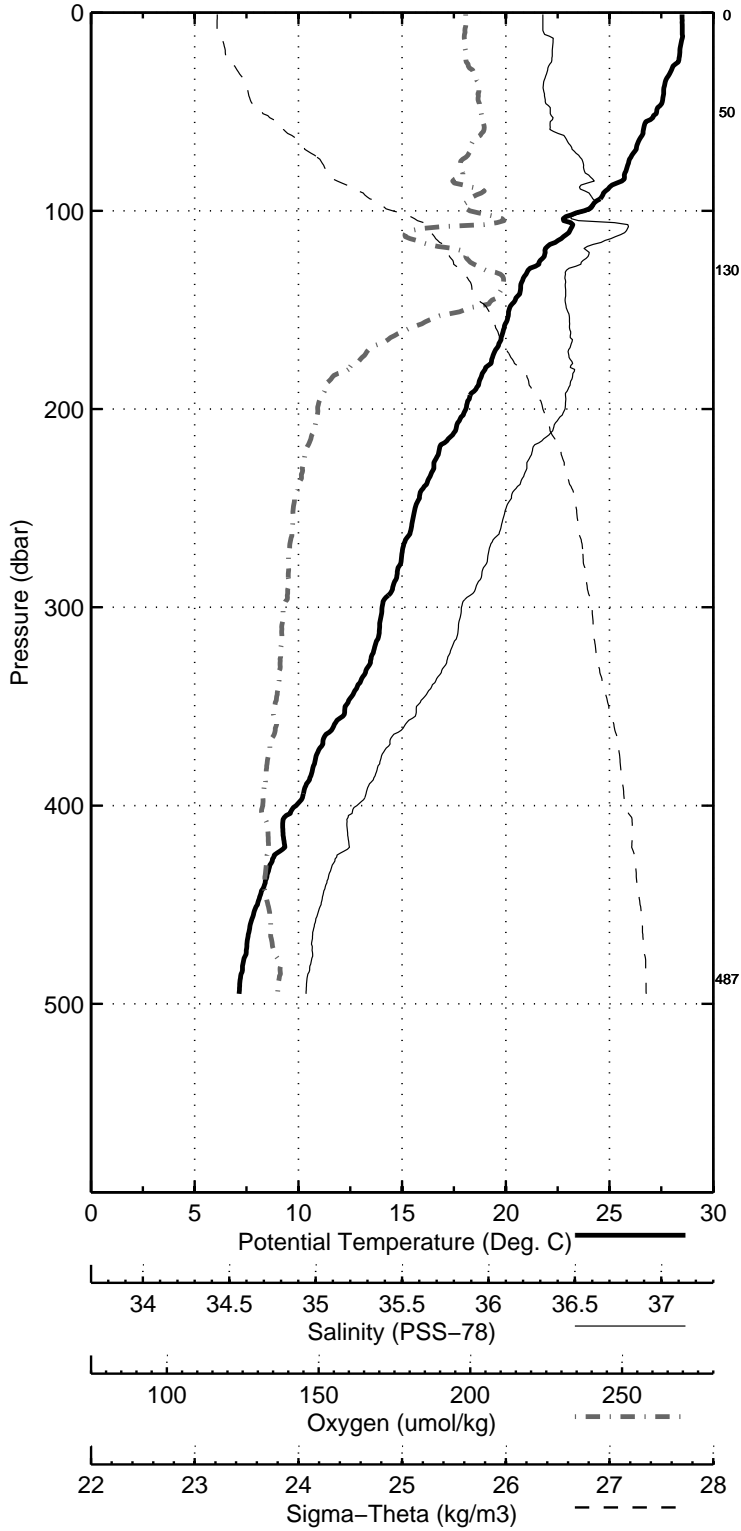


Figure 22: WS0415

Florida Straits R/V FG Walton Smith
CTD Station 4 (CTD004)
Latitude 27.006 N Longitude 79.618 W
05-Jun-2004 12:01 Z

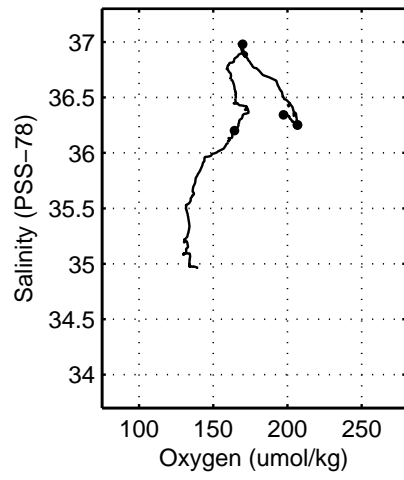
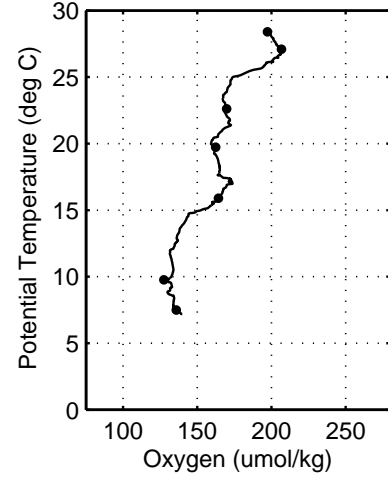
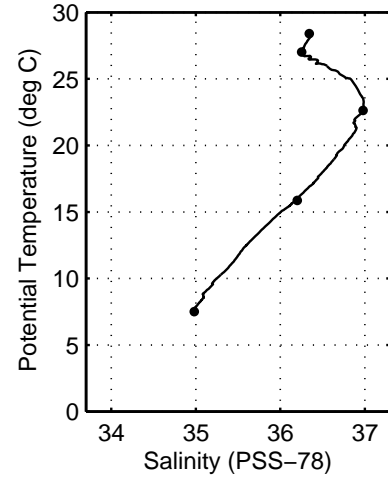
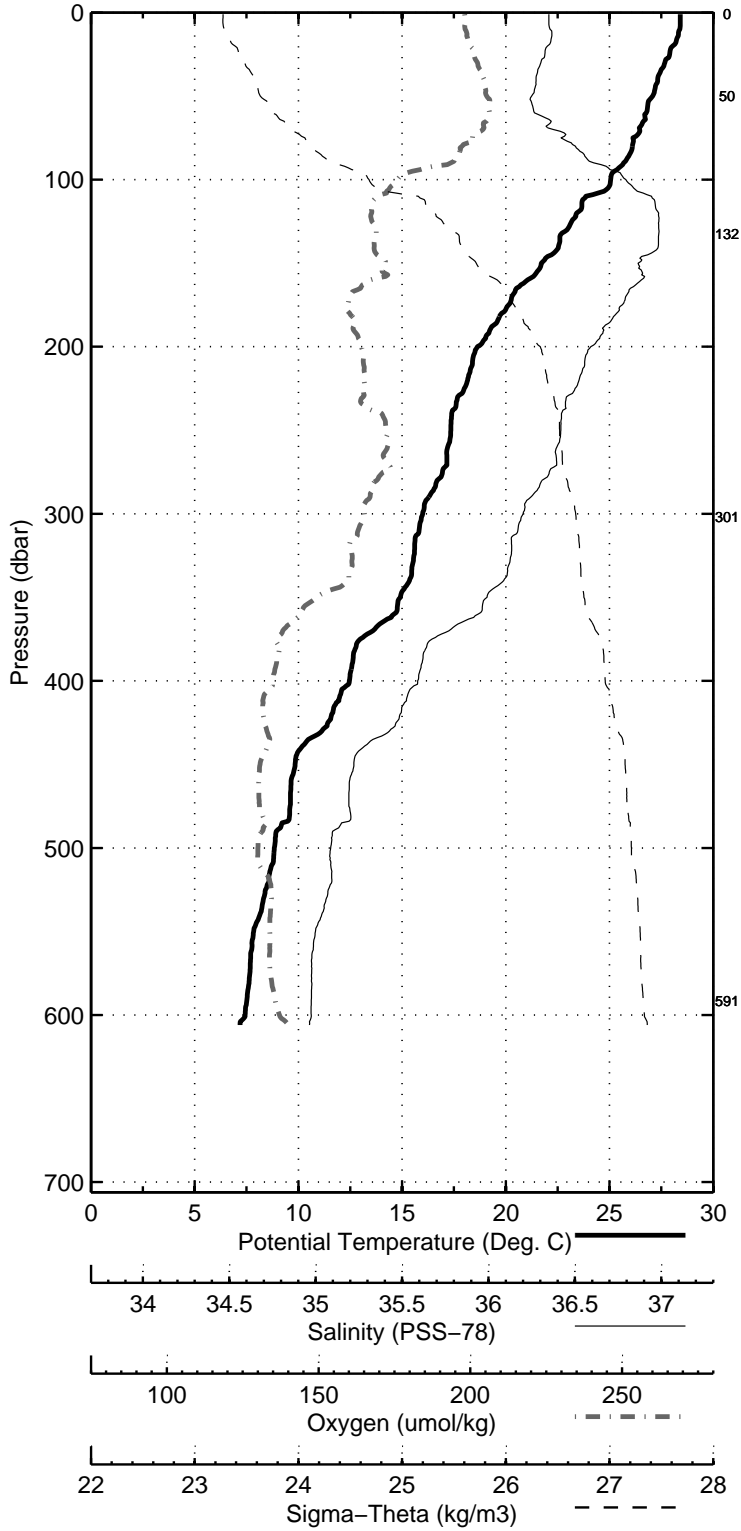


Figure 23: WS0415

Florida Straits R/V FG Walton Smith
 CTD Station 5 (CTD005)
 Latitude 27.006 N Longitude 79.500 W
 05-Jun-2004 10:30 Z

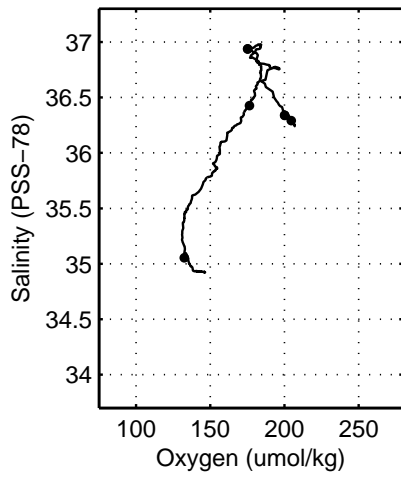
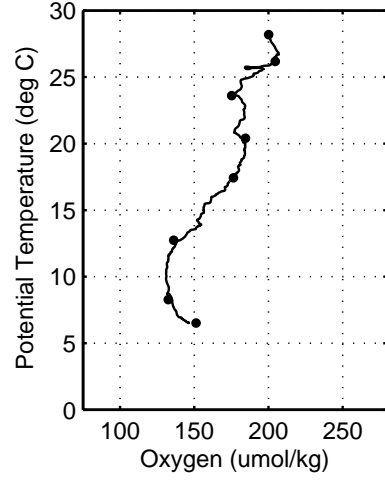
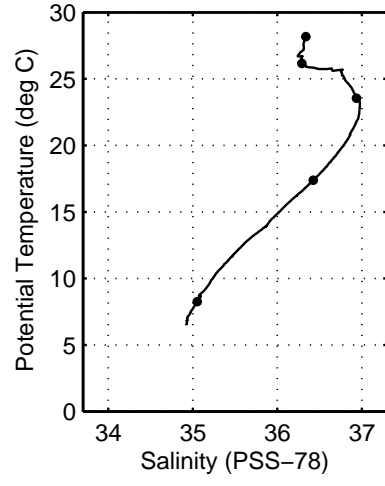
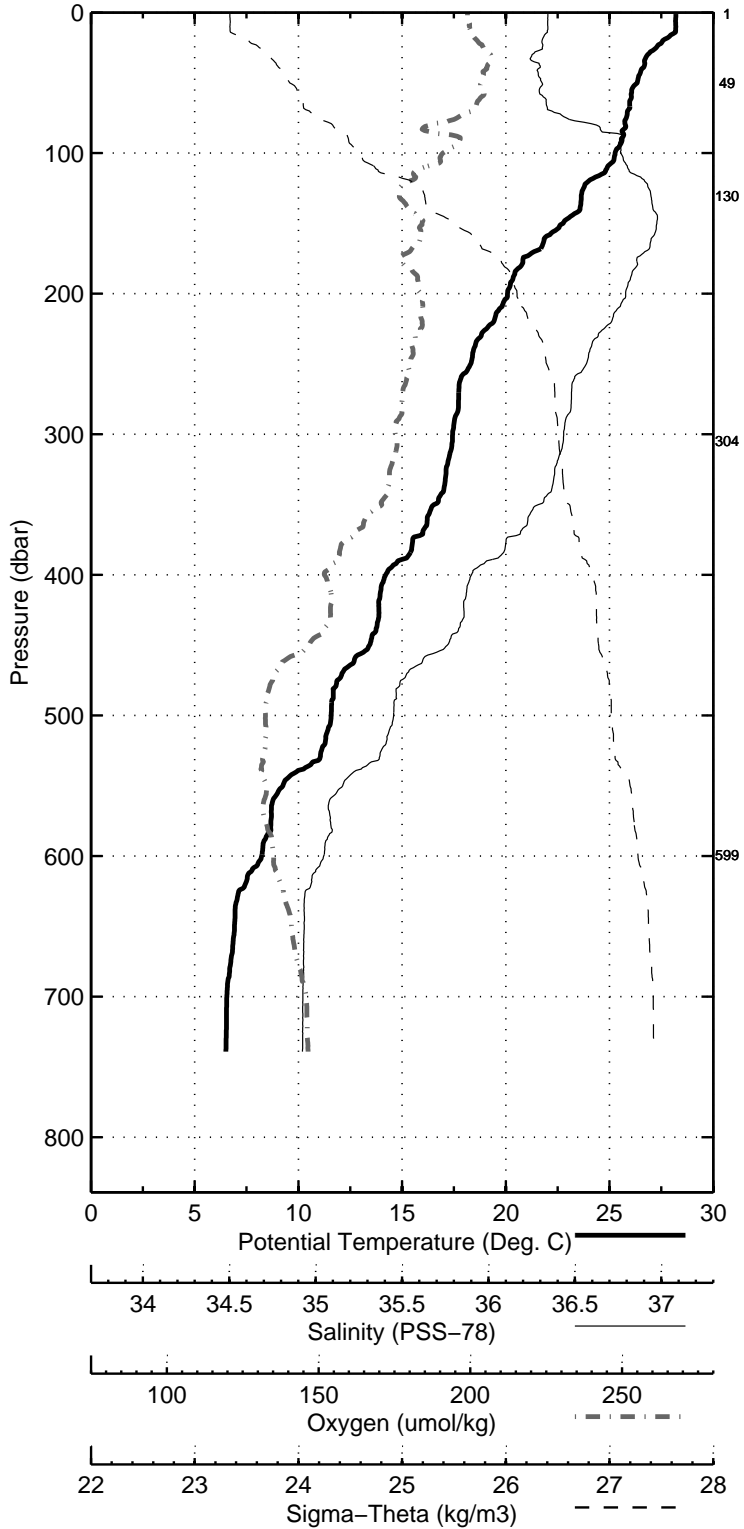


Figure 24: WS0415

Florida Straits R/V FG Walton Smith
CTD Station 6 (CTD006)
Latitude 27.005 N Longitude 79.383 W
05-Jun-2004 08:52 Z

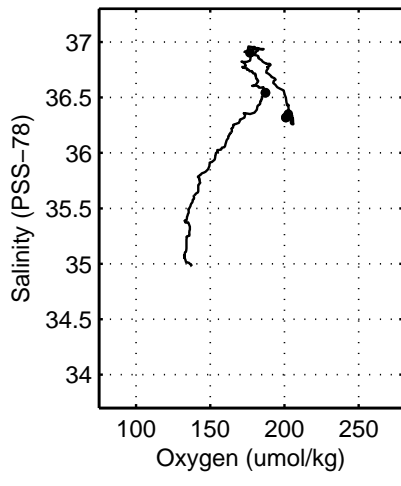
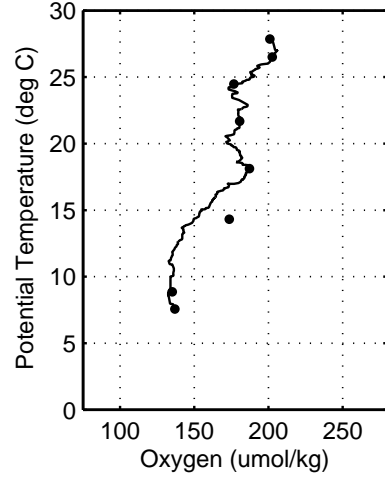
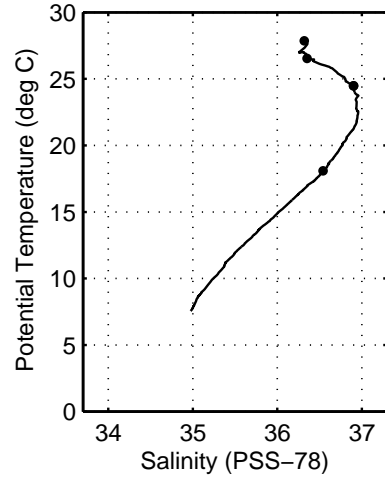
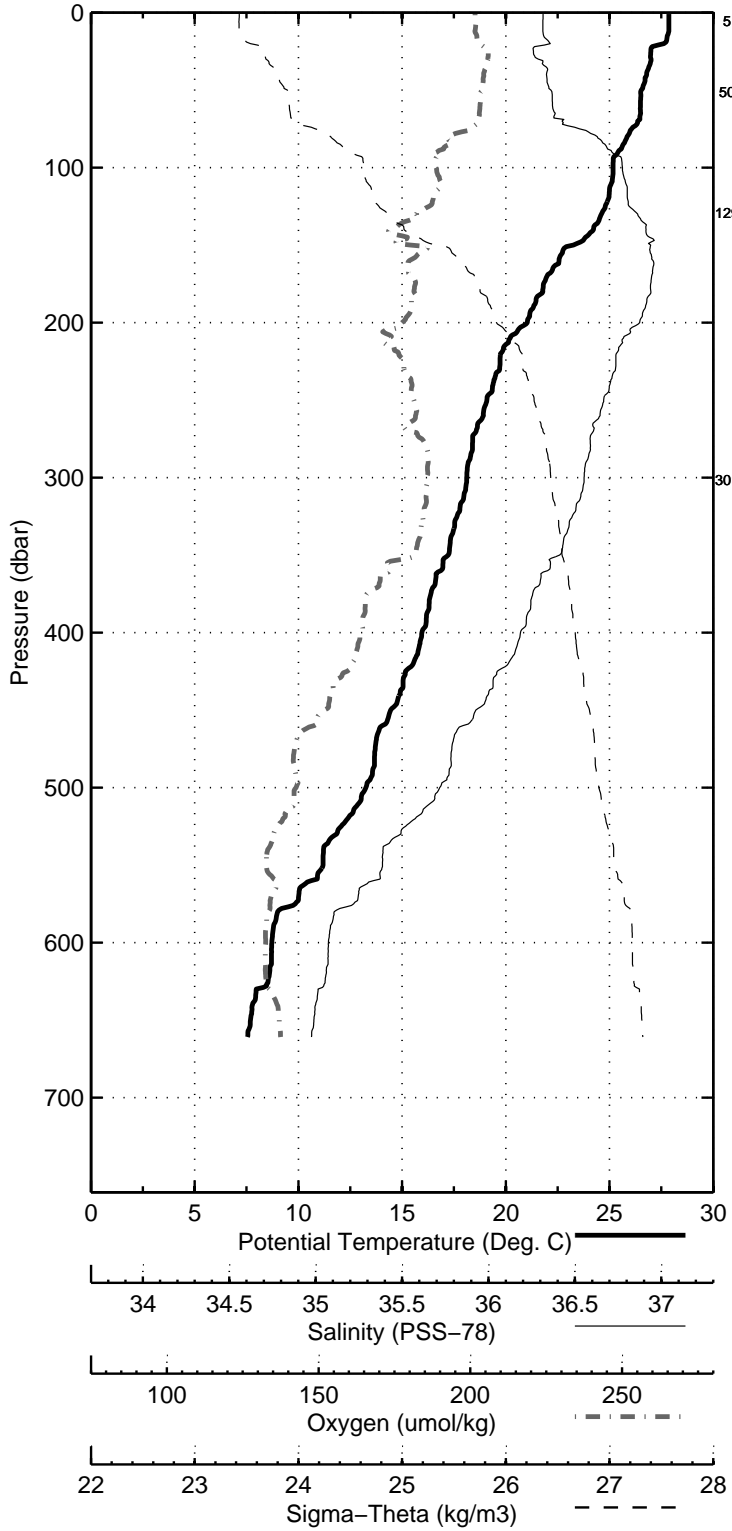


Figure 25: WS0415

Florida Straits R/V FG Walton Smith
 CTD Station 7 (CTD007)
 Latitude 27.004 N Longitude 79.287 W
 05-Jun-2004 07:30 Z

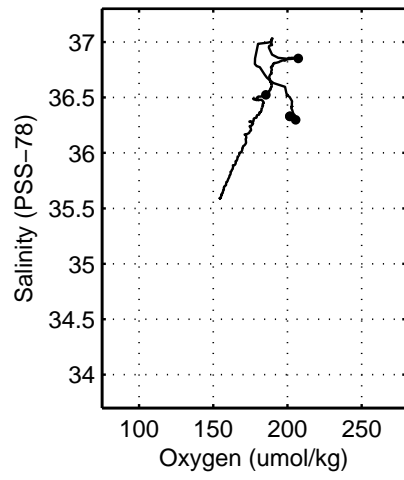
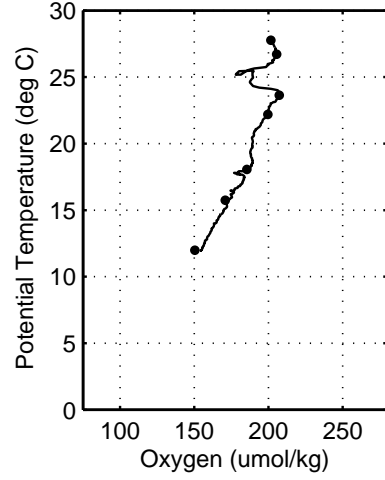
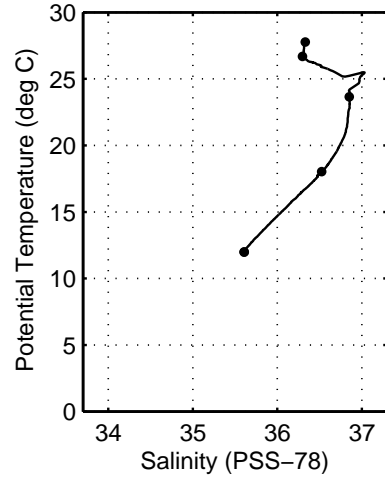
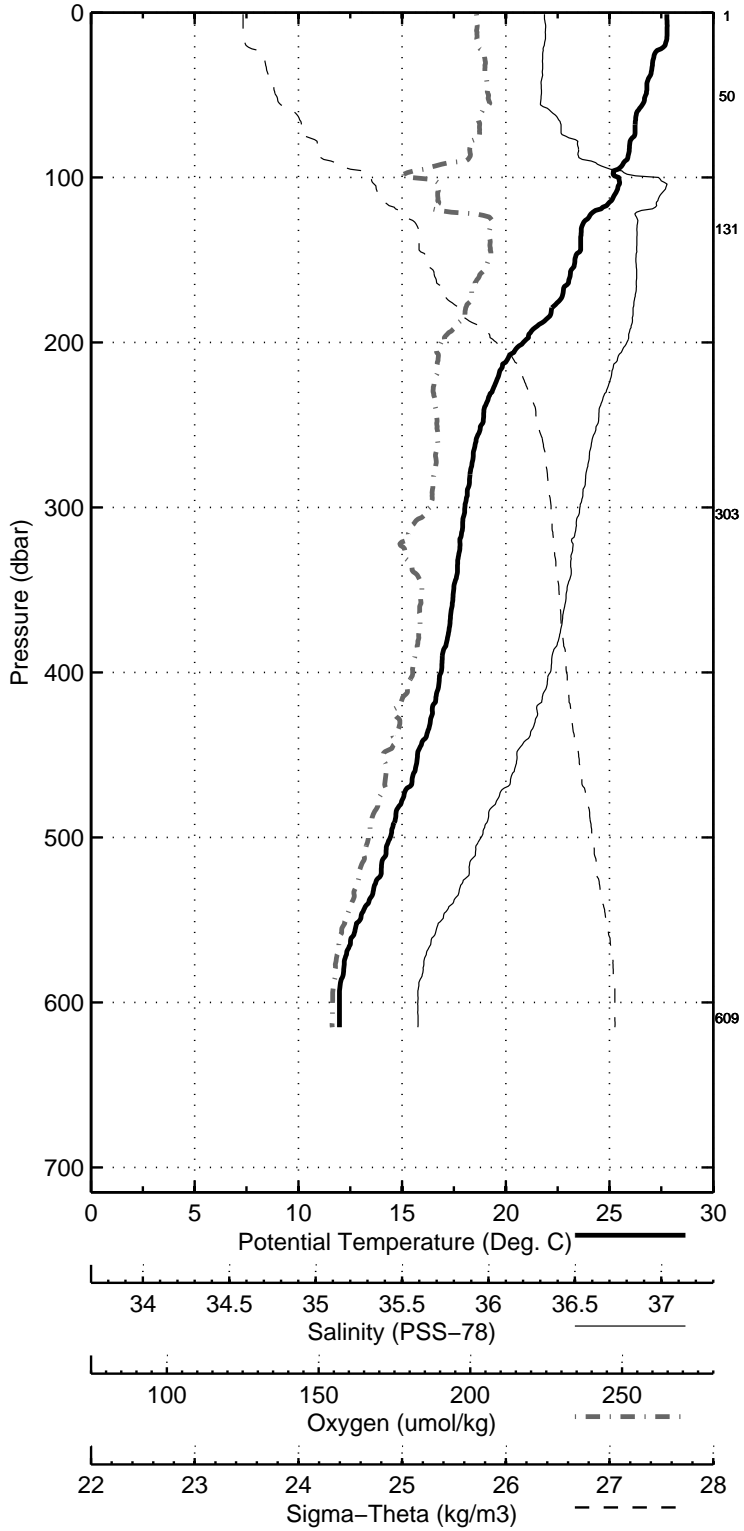


Figure 26: WS0415

Florida Straits R/V FG Walton Smith
 CTD Station 8 (CTD008)
 Latitude 27.001 N Longitude 79.199 W
 05-Jun-2004 06:23 Z

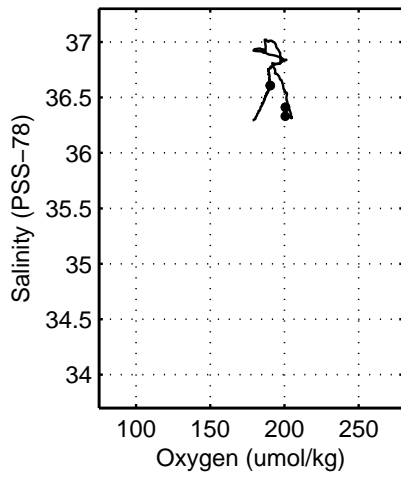
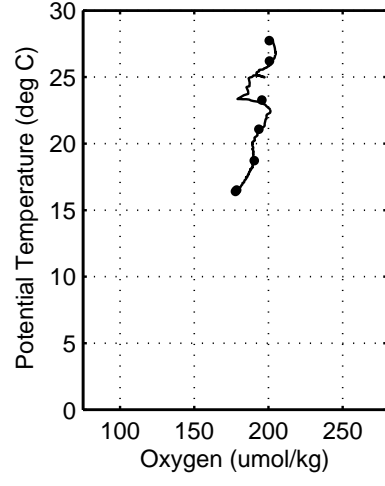
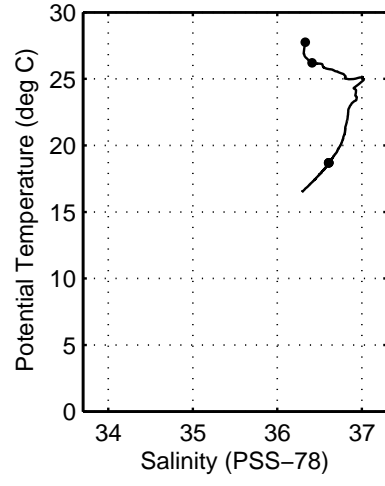
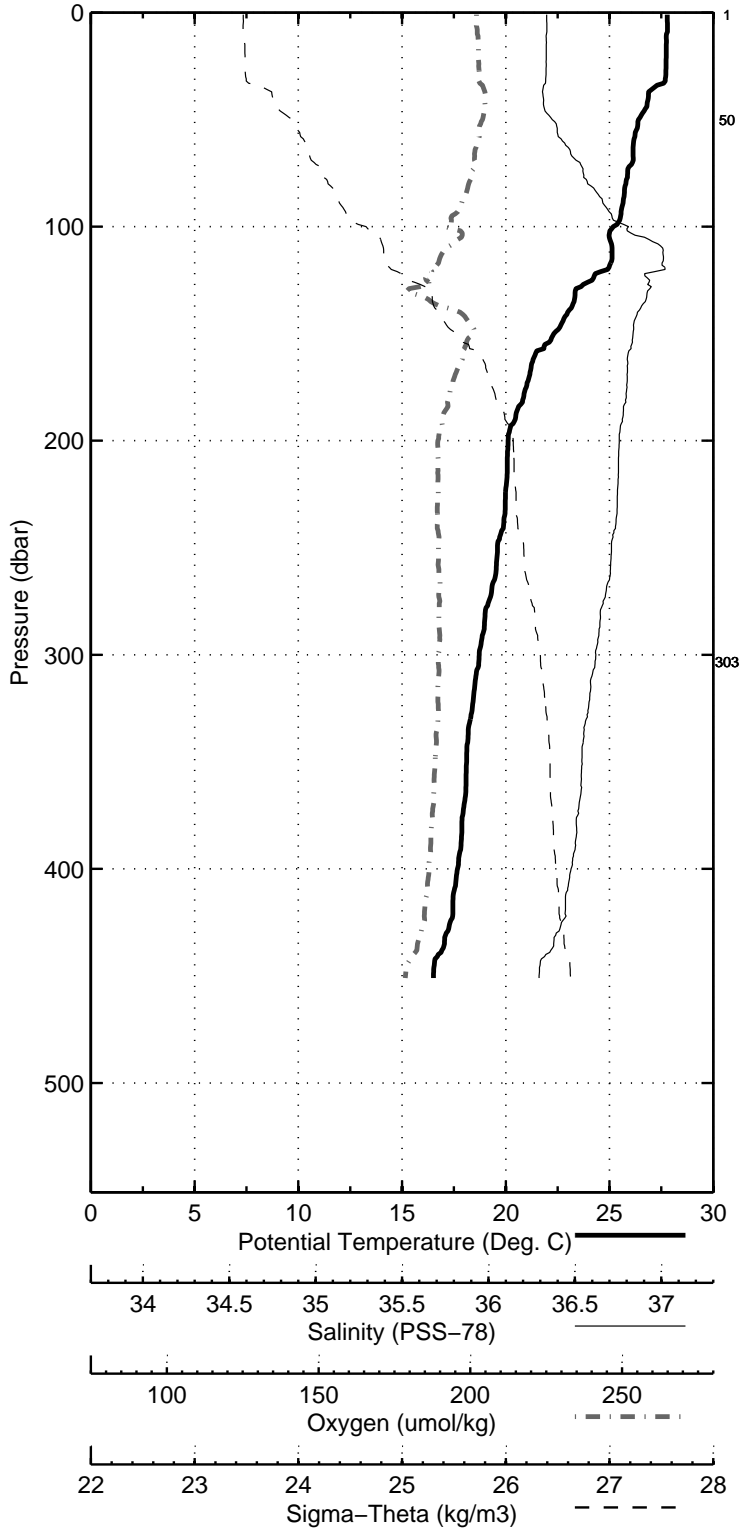


Figure 27: WS0415