

Straits of Florida: CTD data calibration report
NOAA/AOML: Western Boundary Time Series program

Cruise ID: WS0402

Cruise date: January, 2004

Christopher M. Duncombe

Rigoberto F. Garcia

Carlos A. Fonseca

Christopher S. Meinen

Molly O. Baringer

April 11, 2008

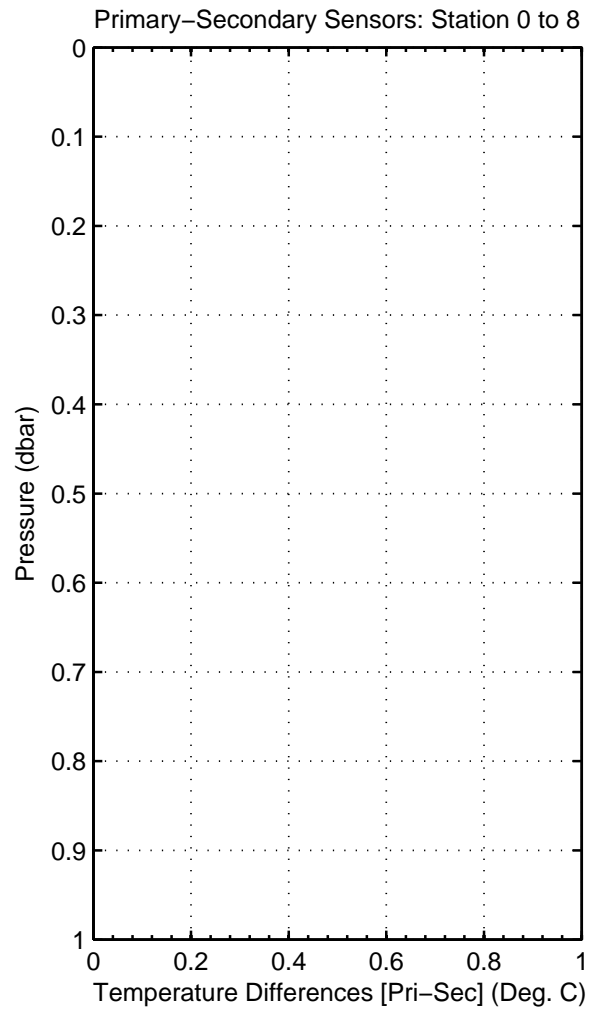
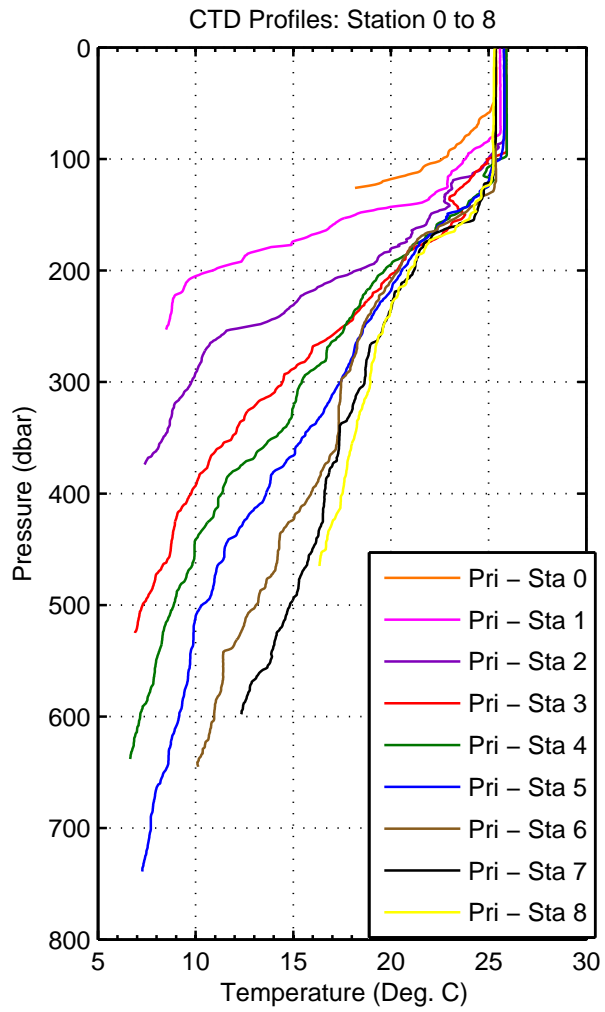


Figure 1: WS0402

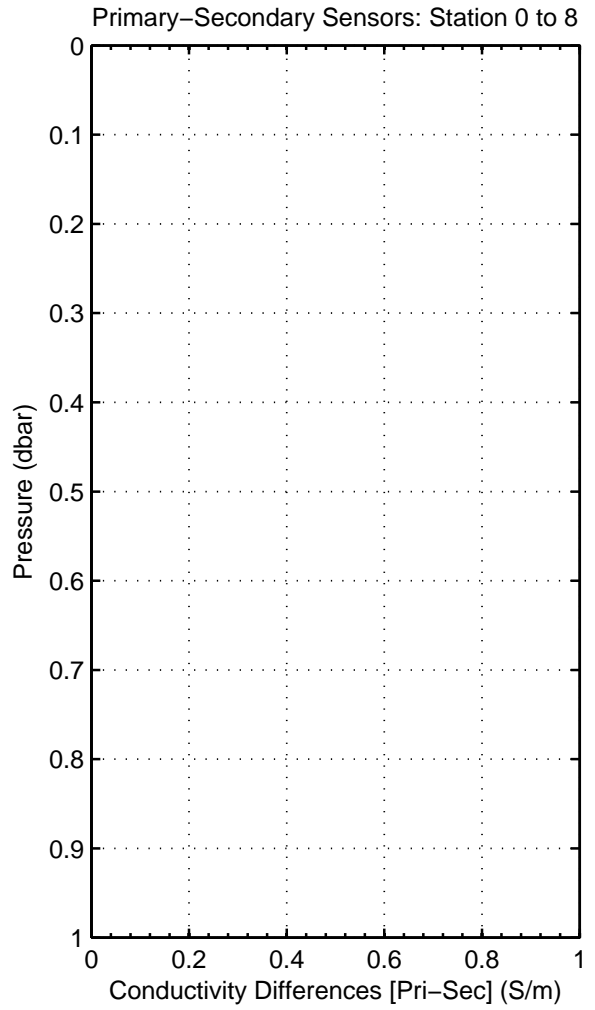
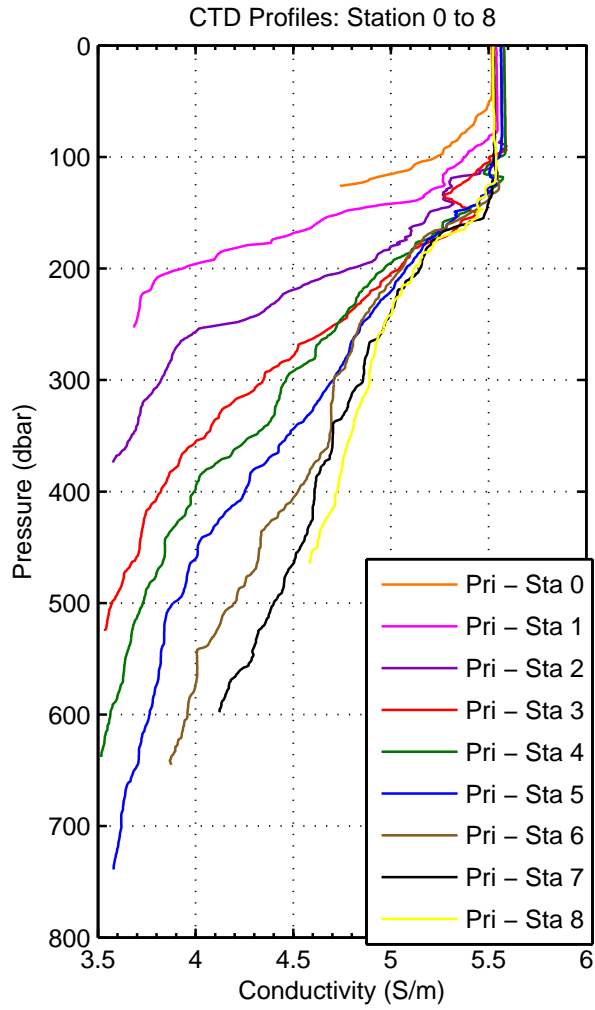


Figure 2: WS0402

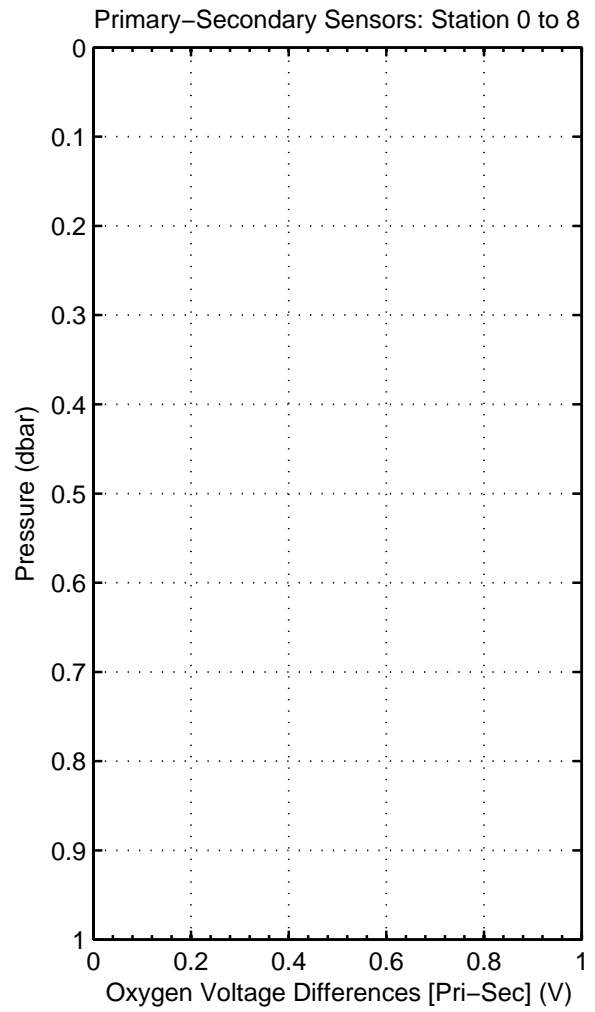
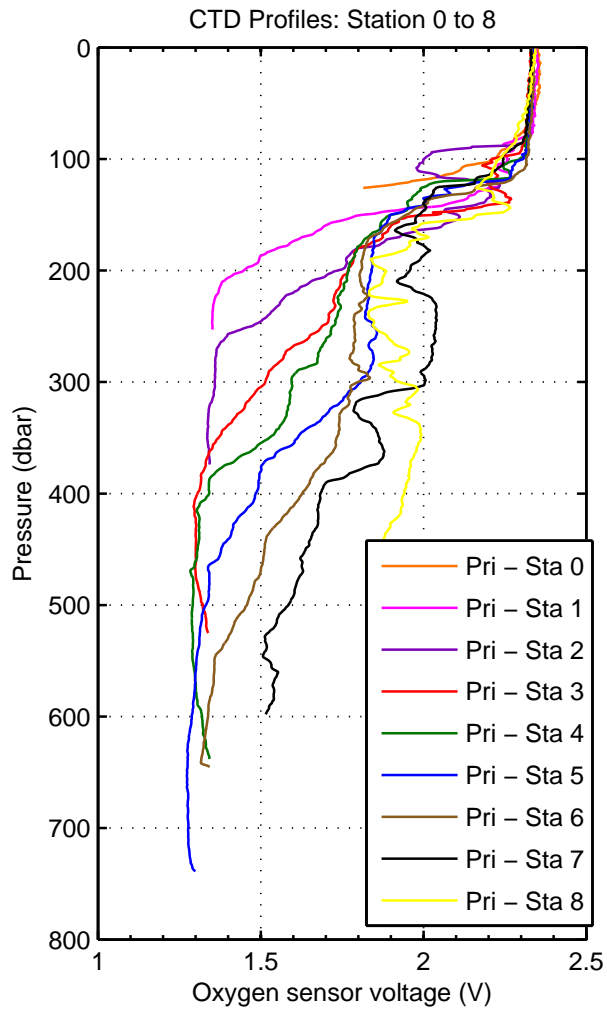


Figure 3: WS0402

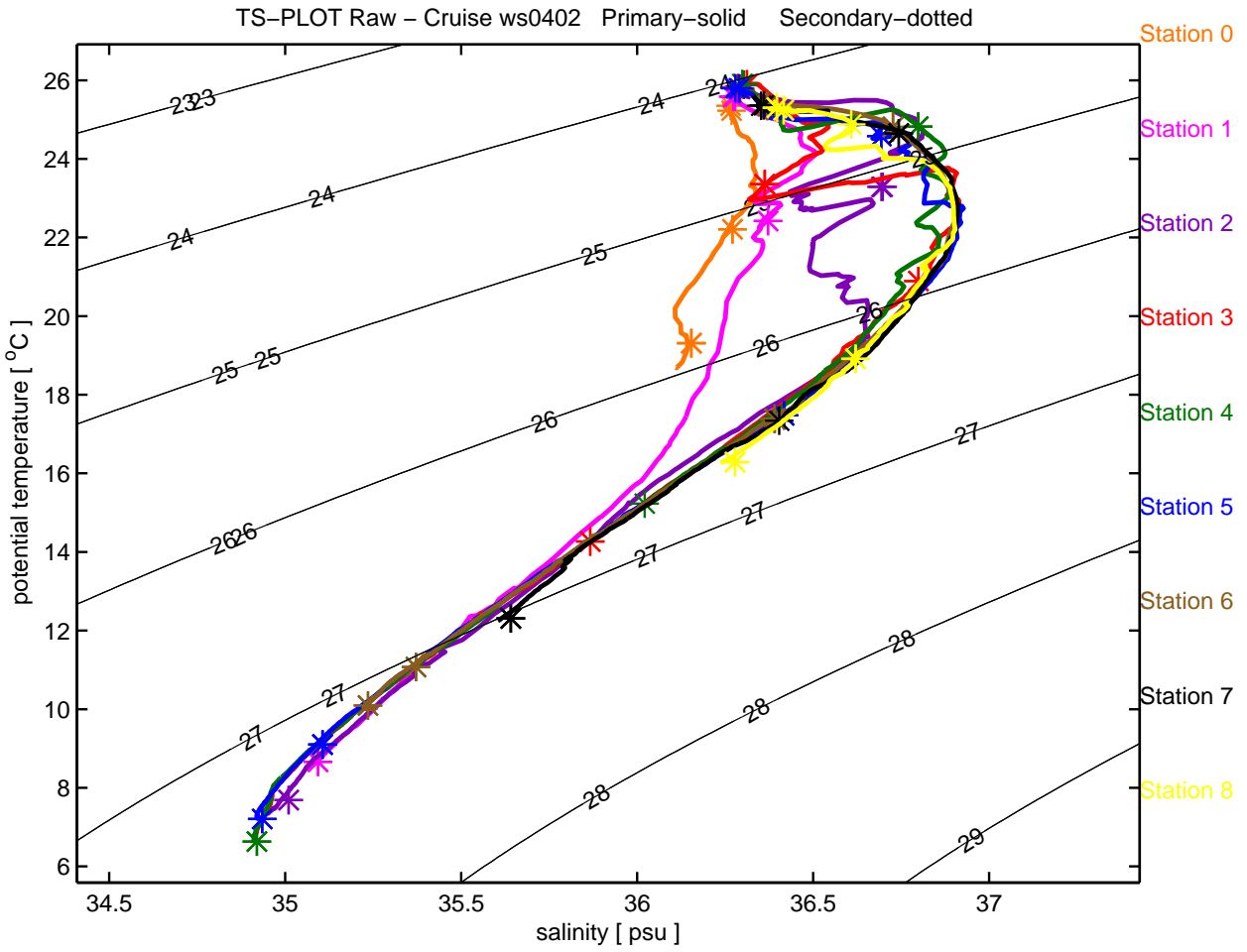


Figure 4: WS0402

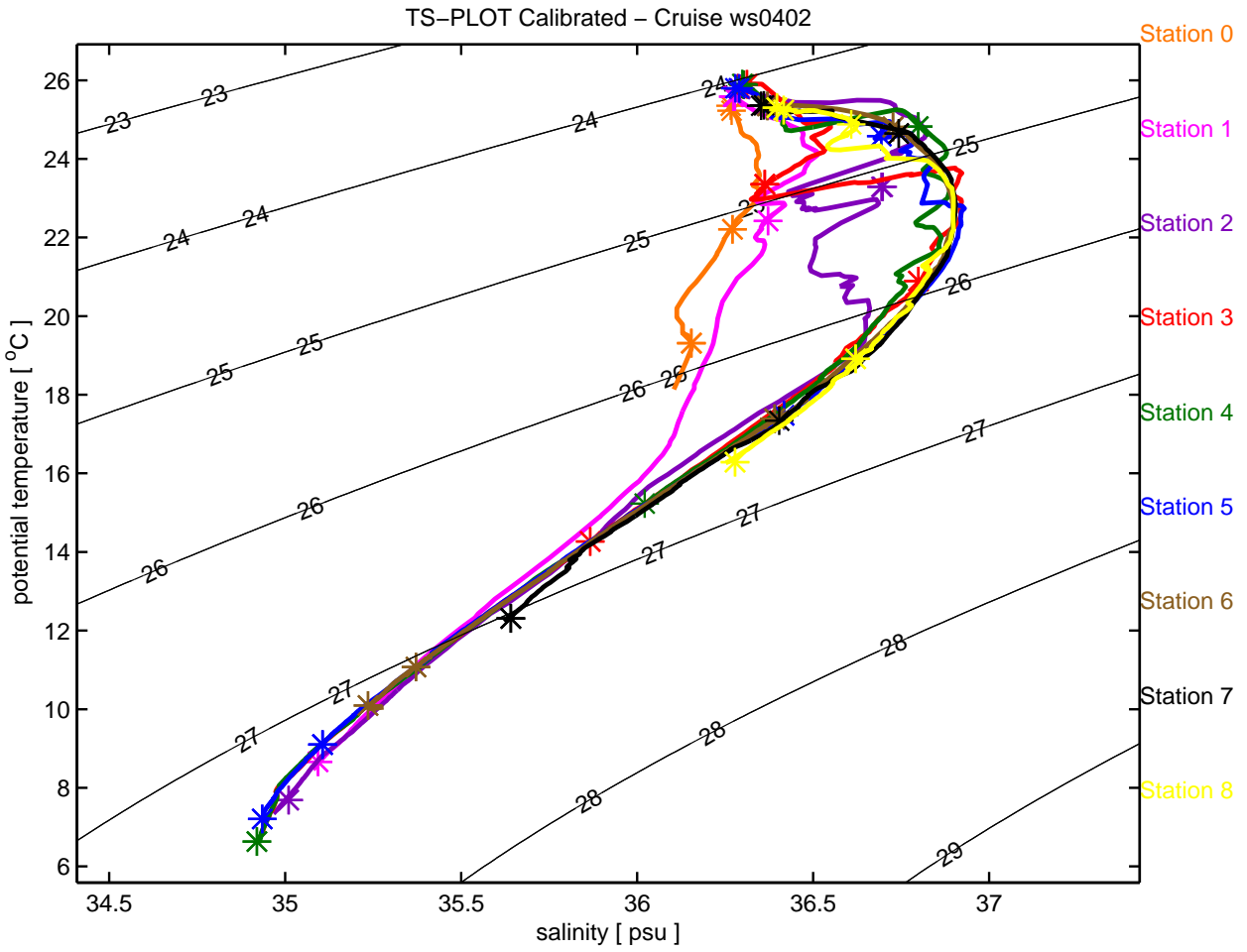


Figure 5: WS0402

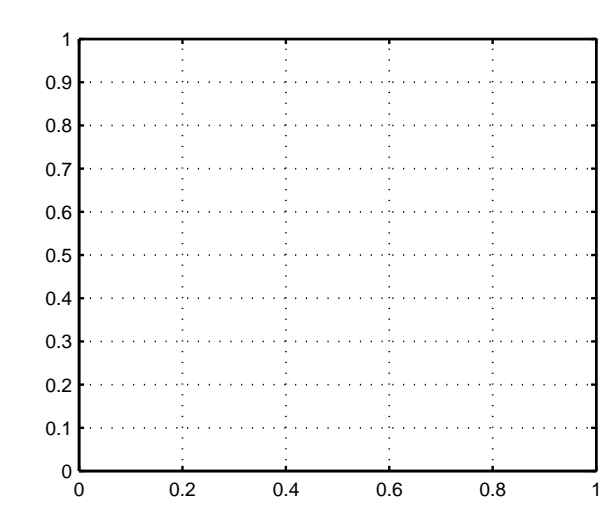
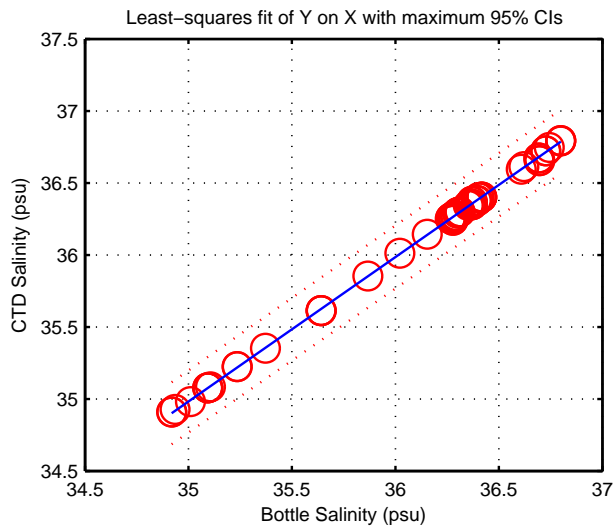
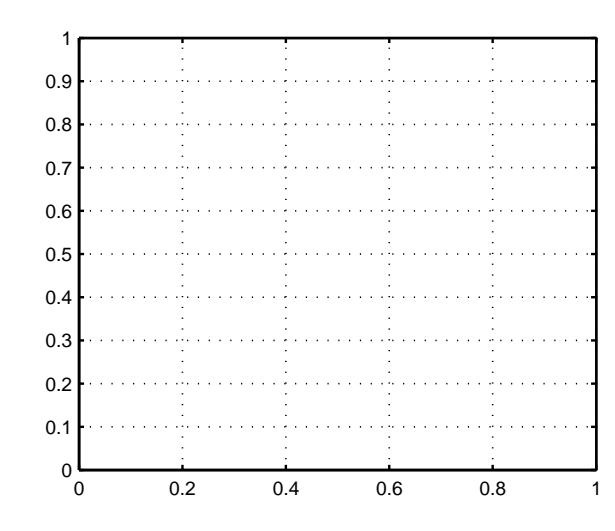
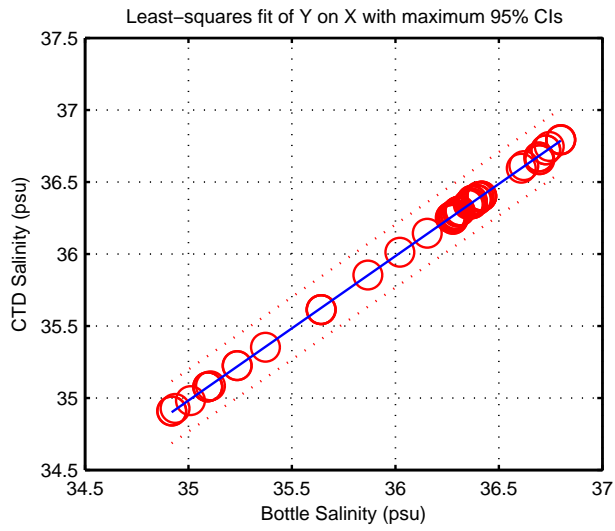
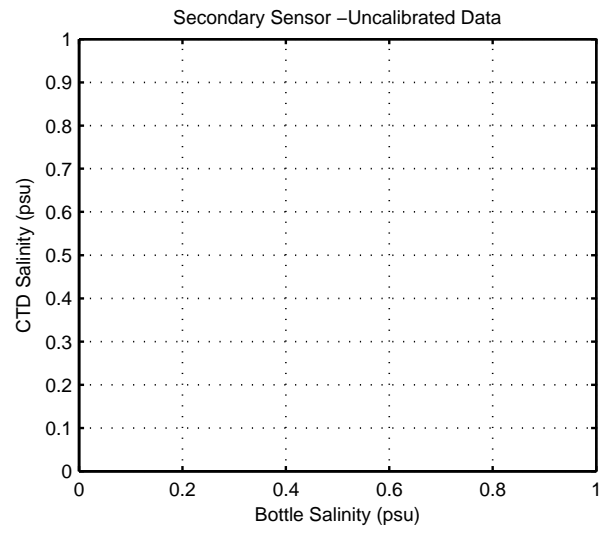
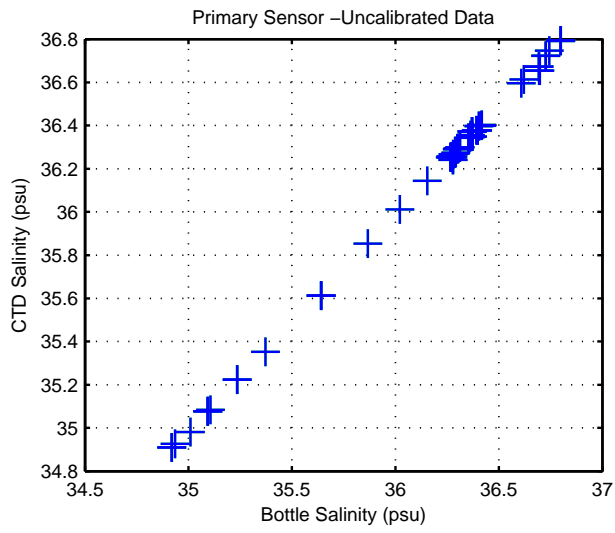


Figure 6: WS0402

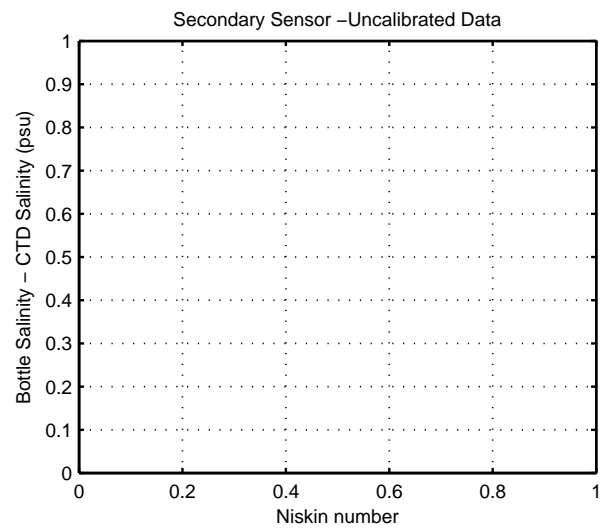
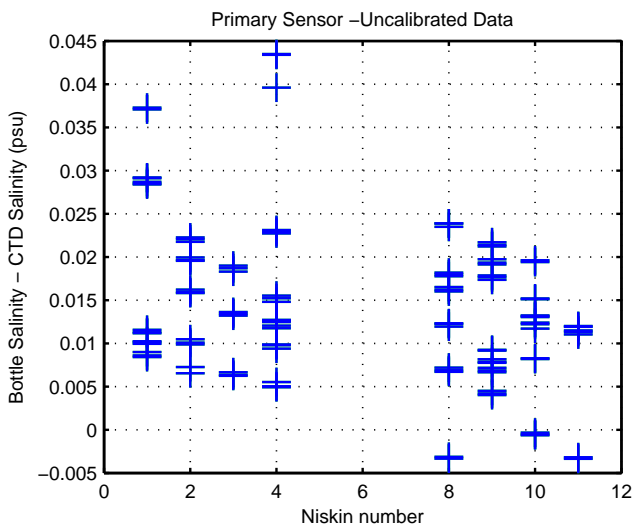
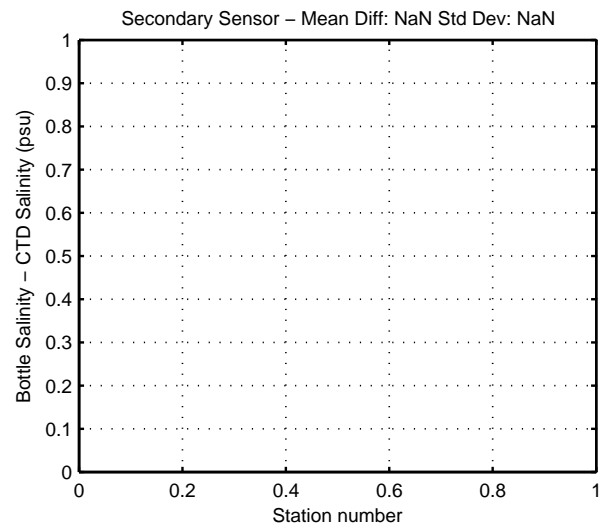
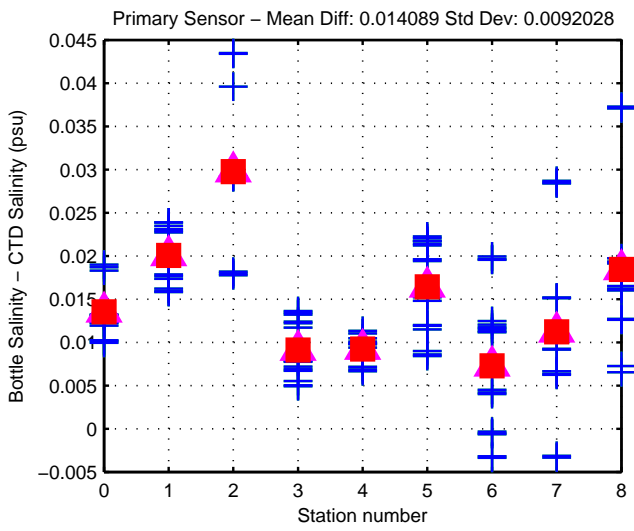
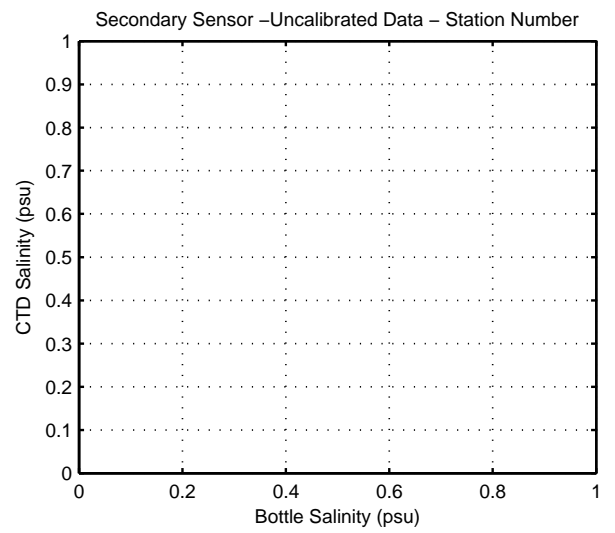
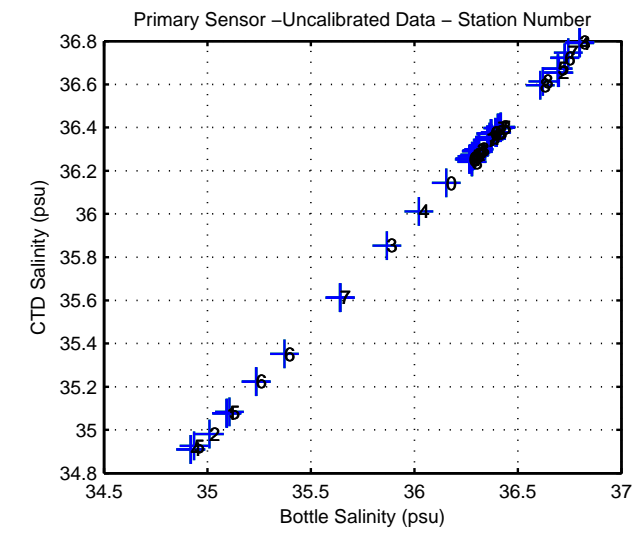


Figure 7: WS0402

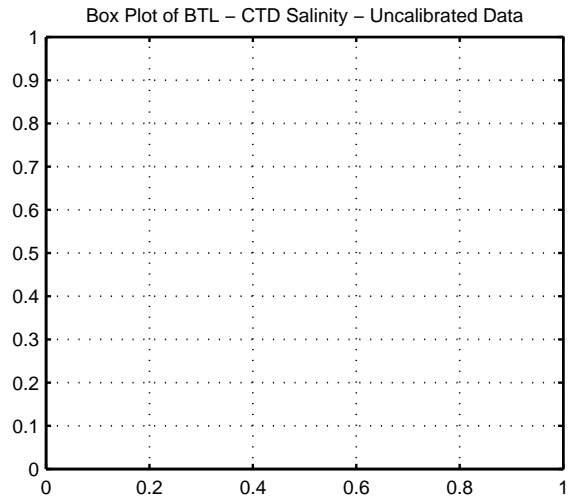
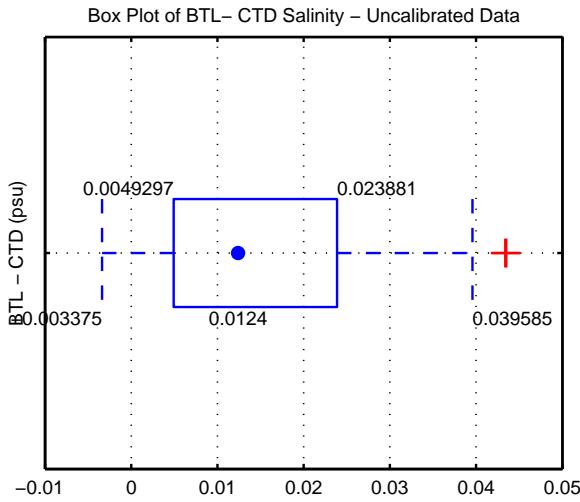
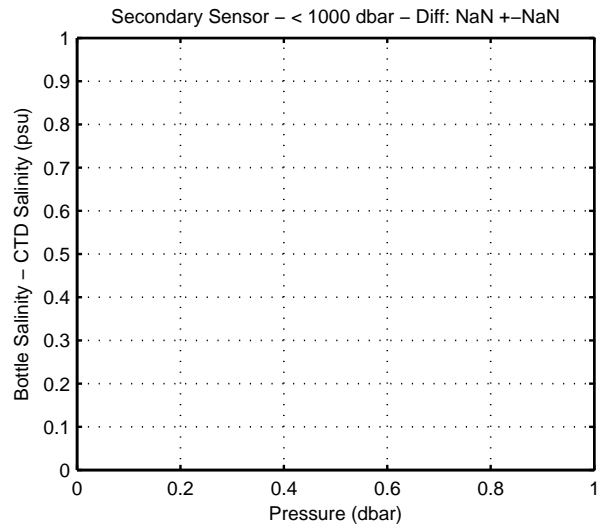
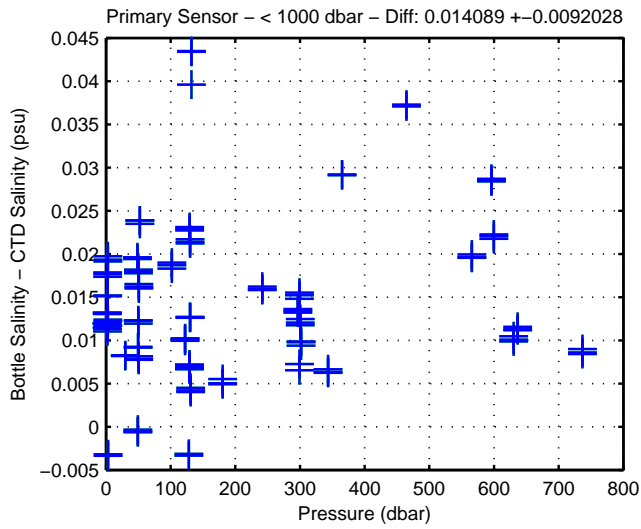
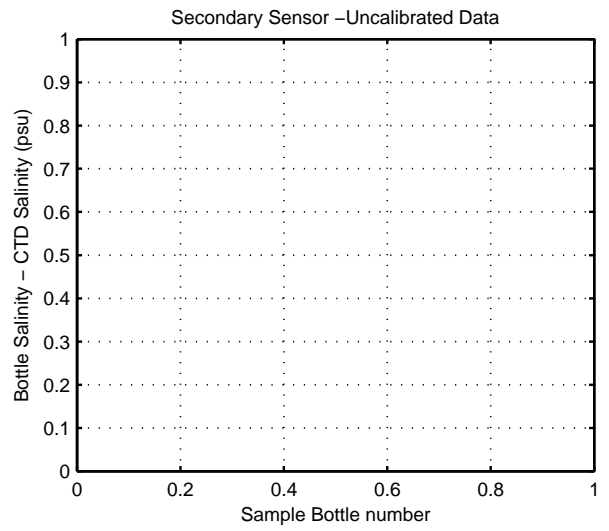
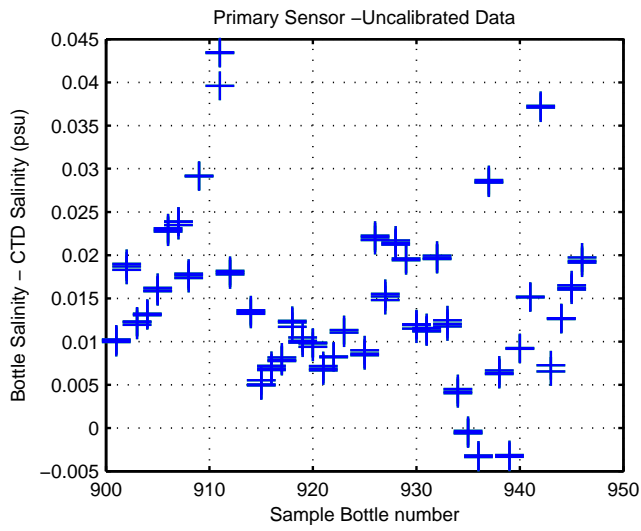
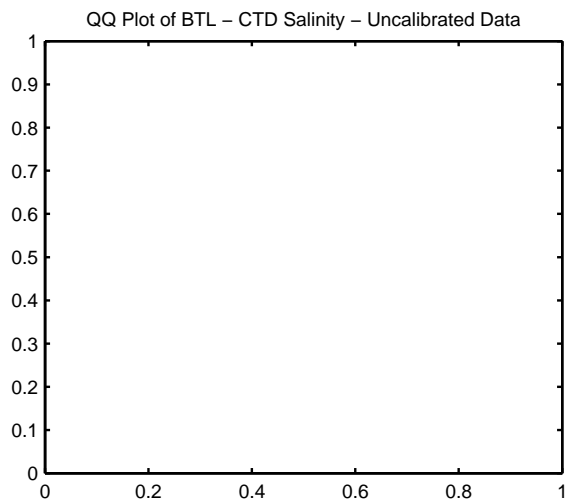
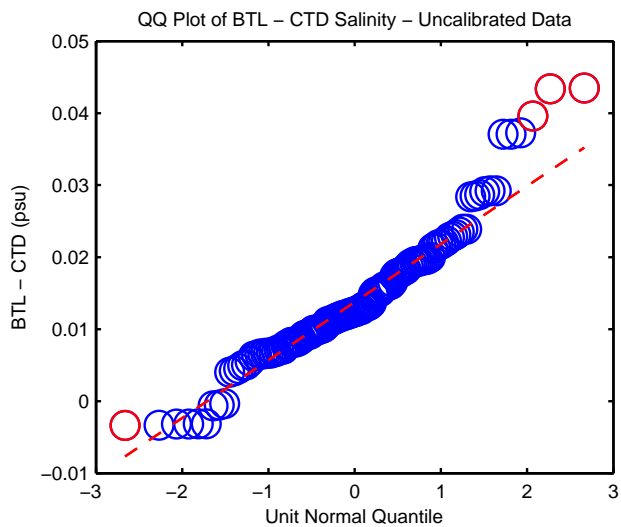
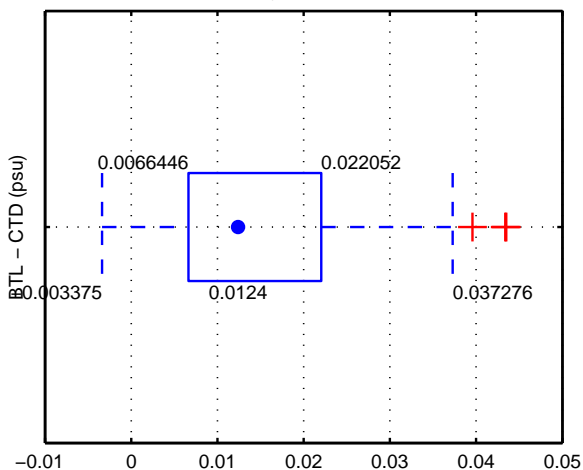


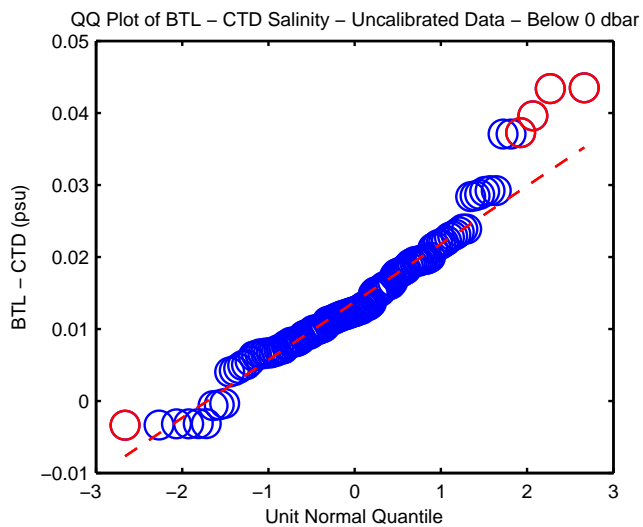
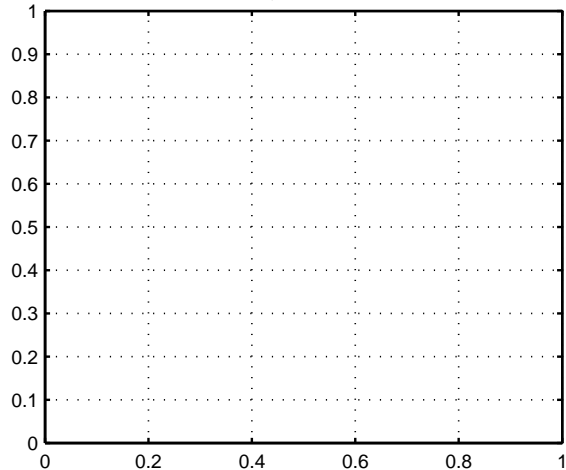
Figure 8: WS0402



Box Plot of BTL - CTD Salinity - Uncalibrated Data - Below 0 dbar



Box Plot of BTL - CTD Salinity - Uncalibrated Data - Below 0 dbar



QQ Plot of BTL - CTD Salinity - Uncalibrated Data - Below 0 dbar

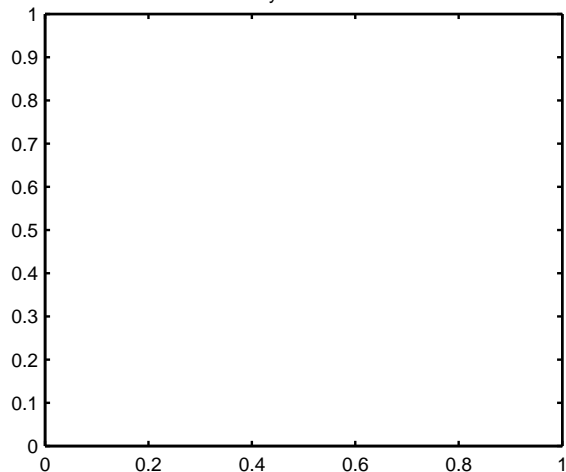


Figure 9: WS0402

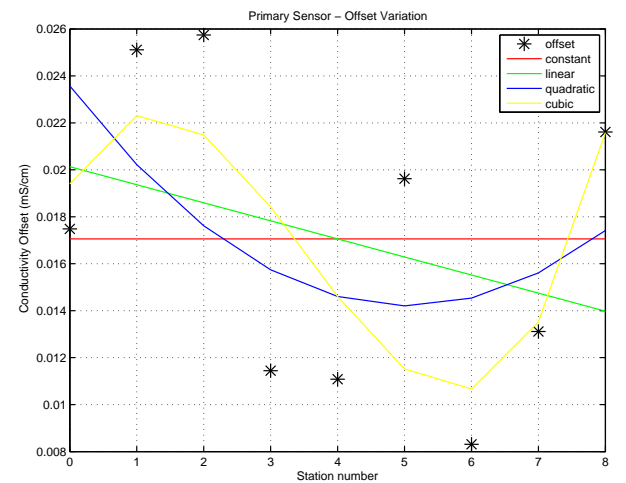
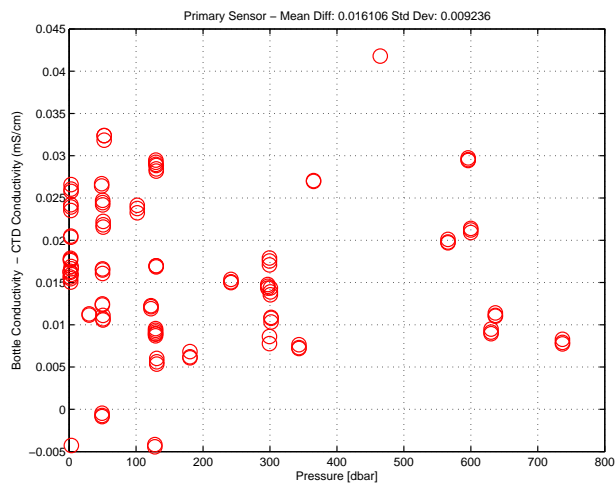
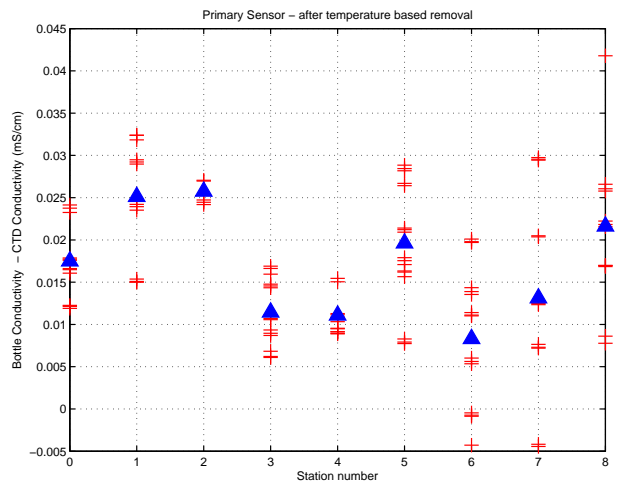
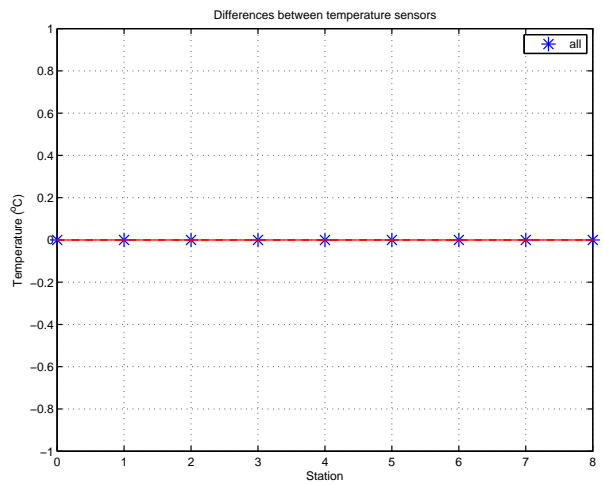
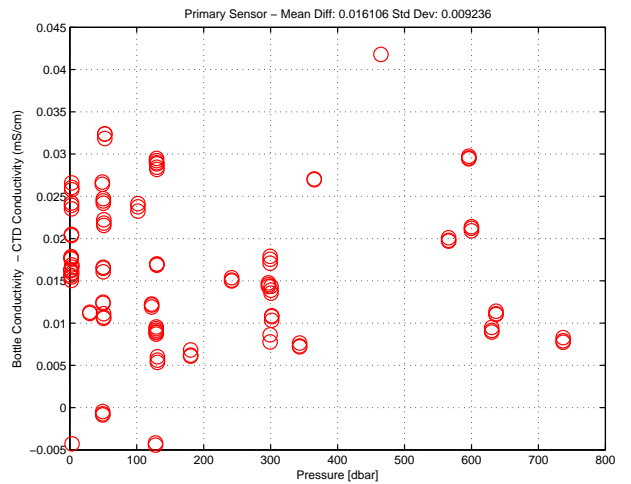
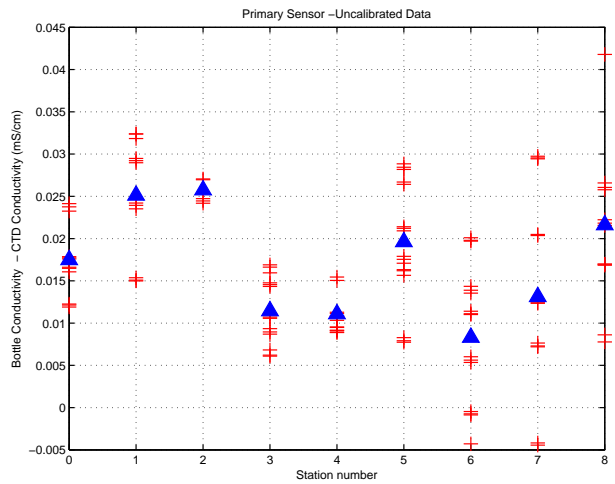


Figure 10: WS0402. Conductivity Calibration

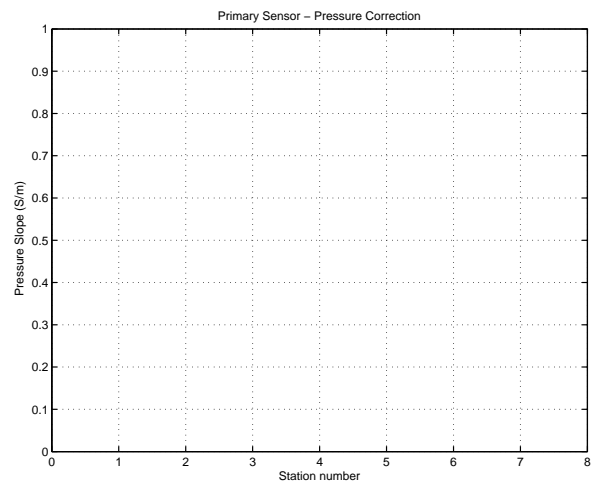
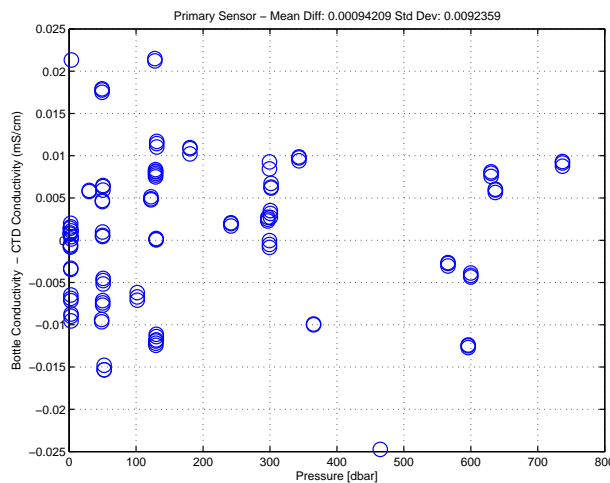
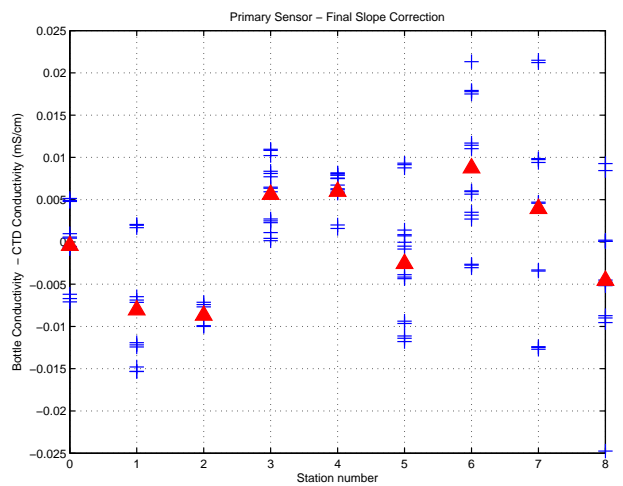
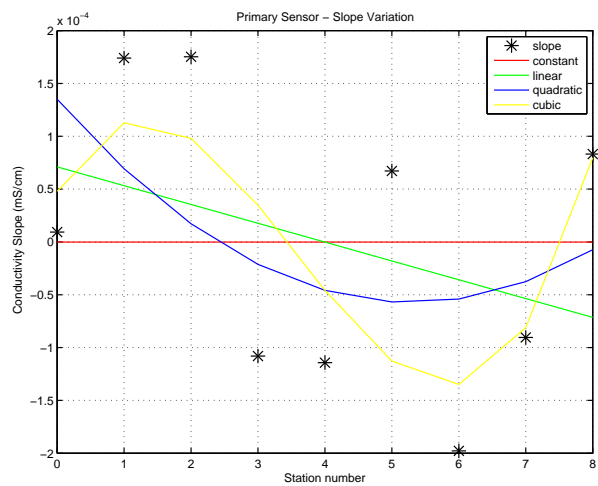
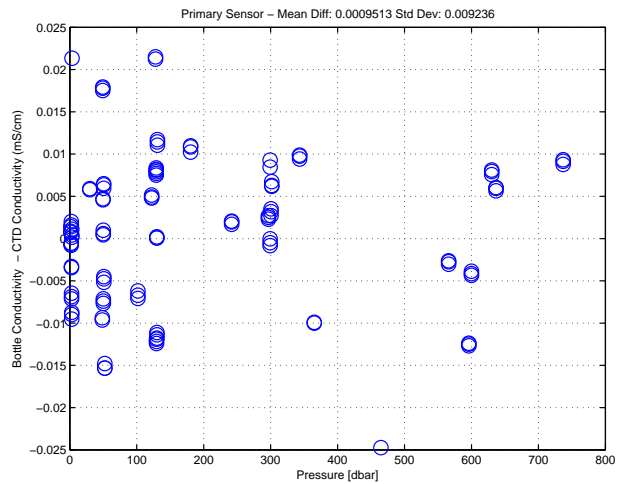
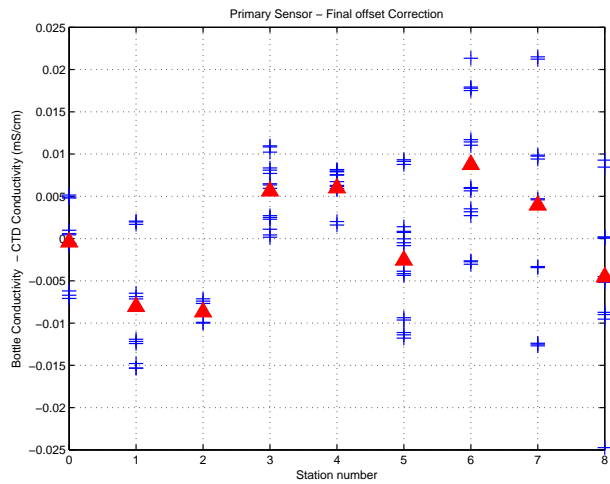


Figure 11: WS0402. Conductivity Calibration (cont.)

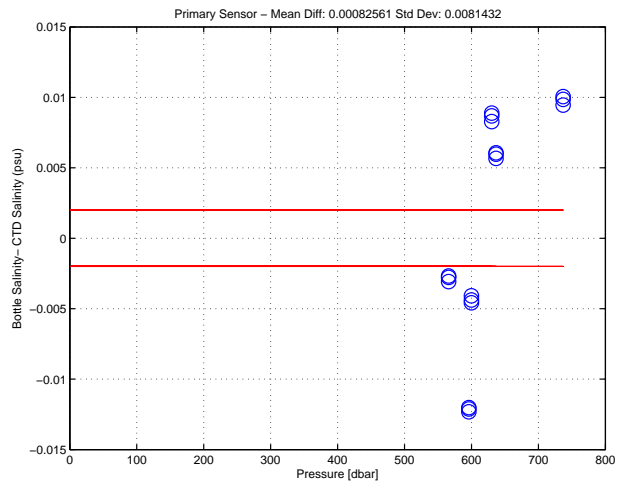
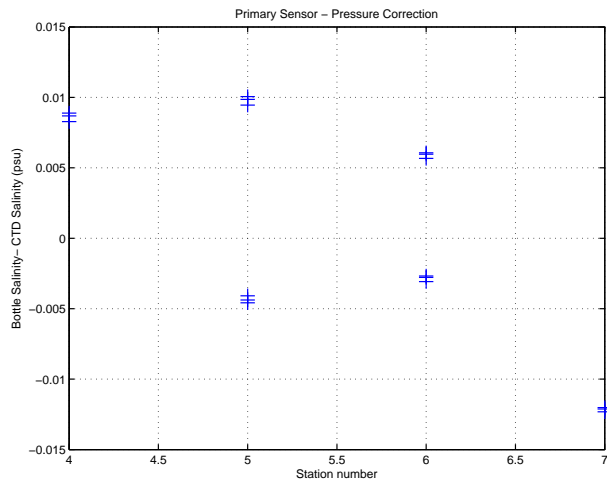
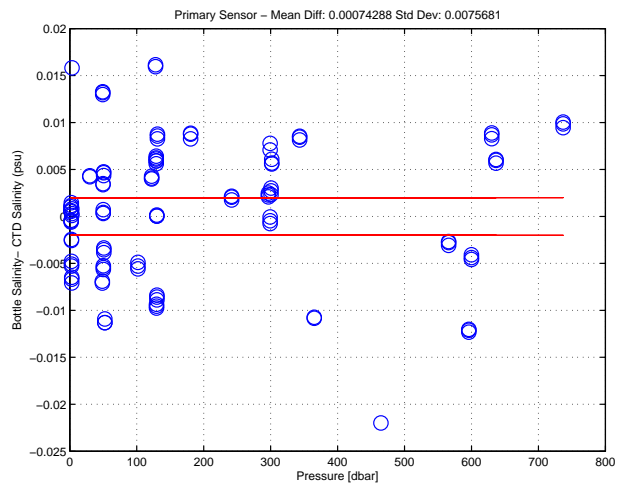
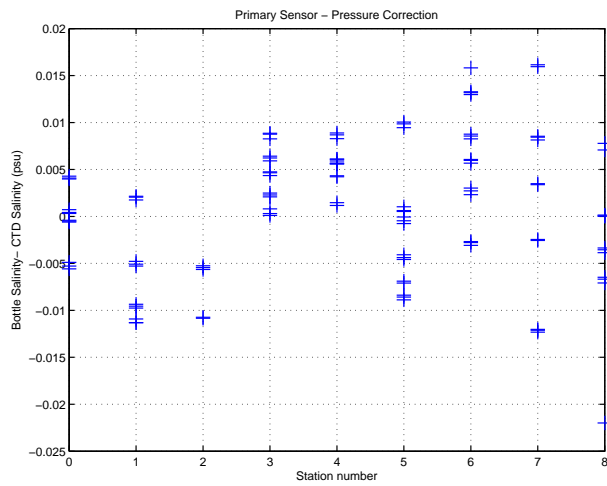
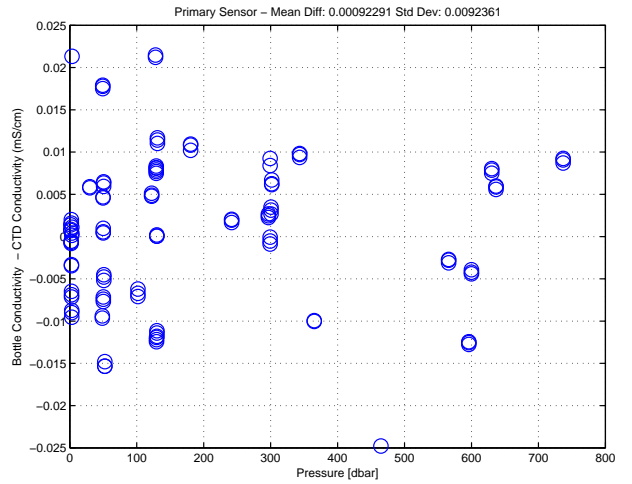
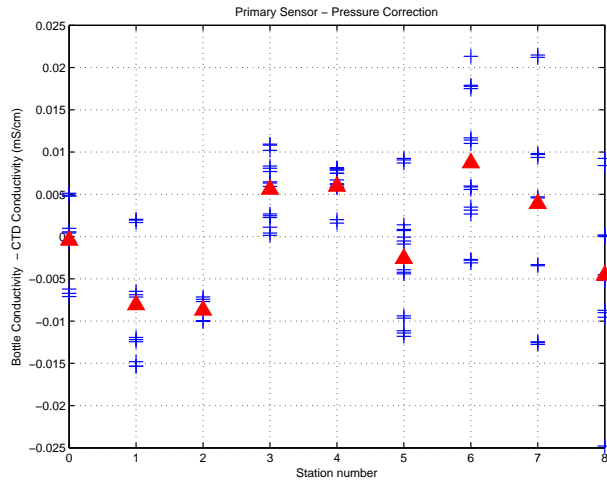


Figure 12: WS0402. Conductivity Calibration (cont.)

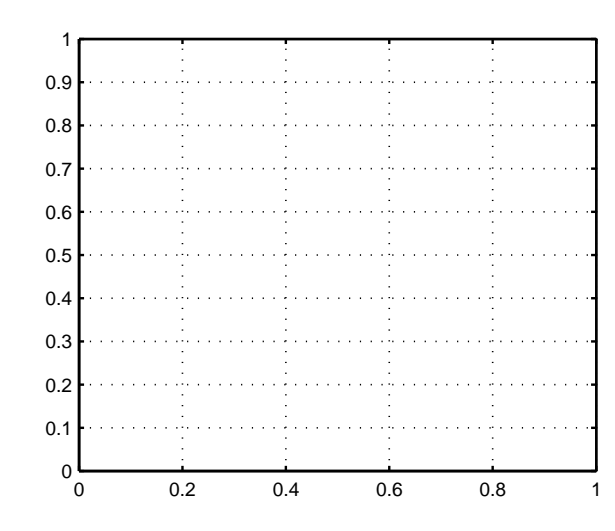
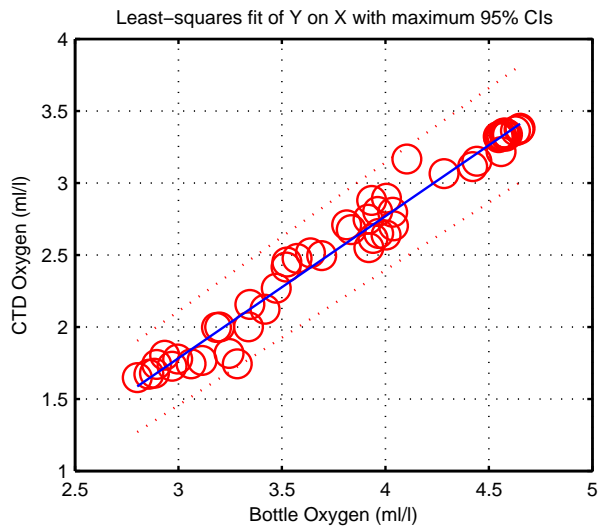
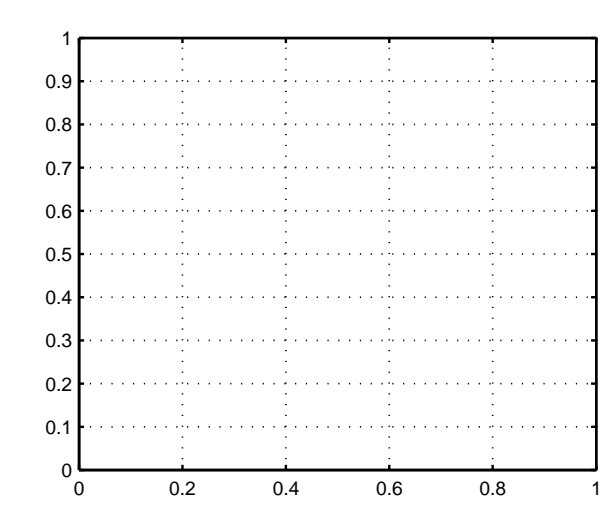
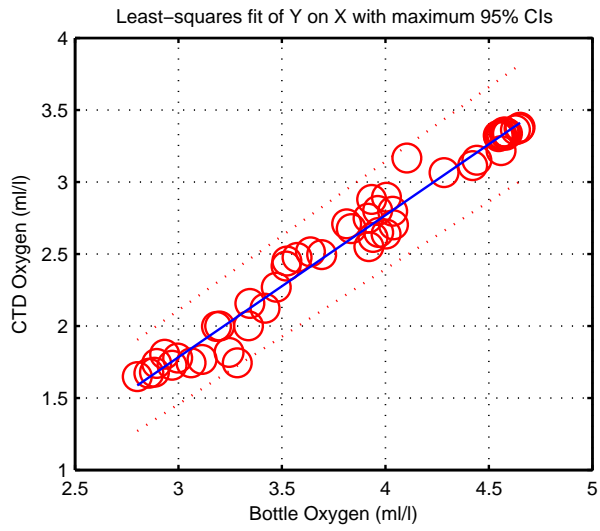
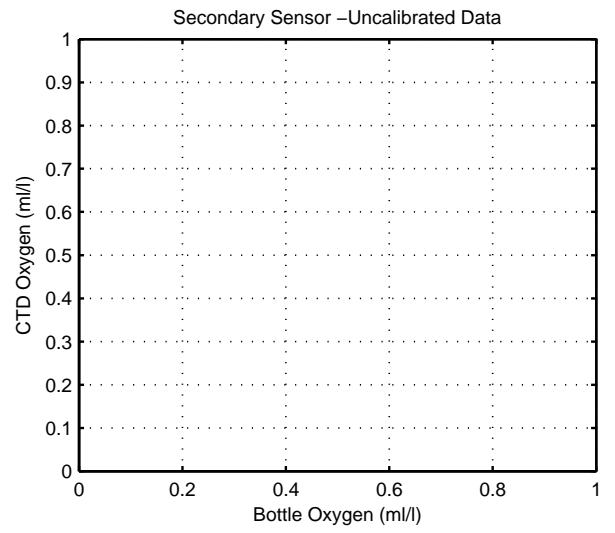
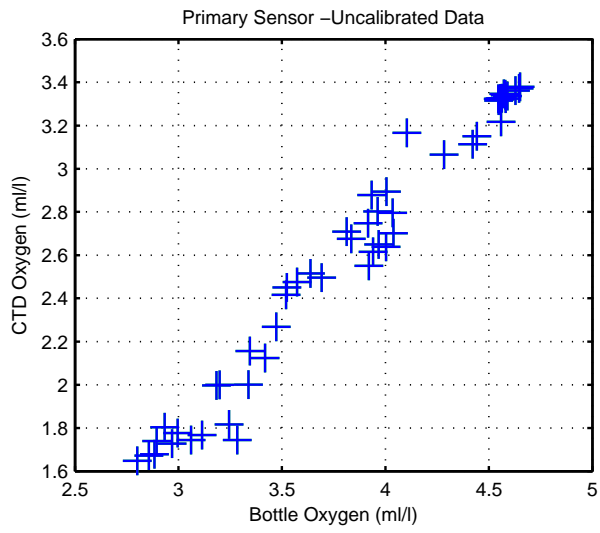


Figure 13: WS0402

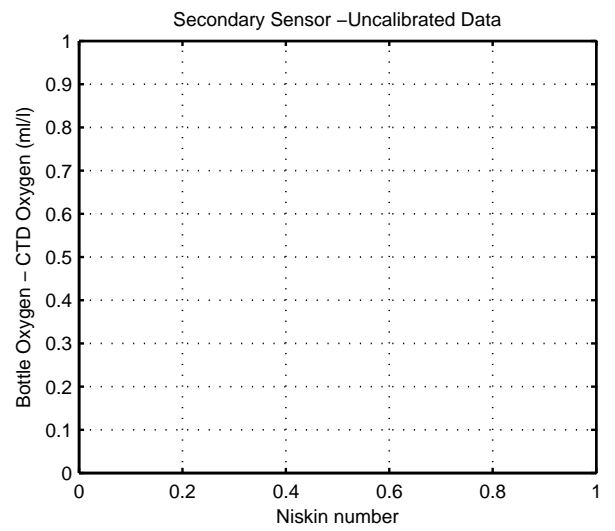
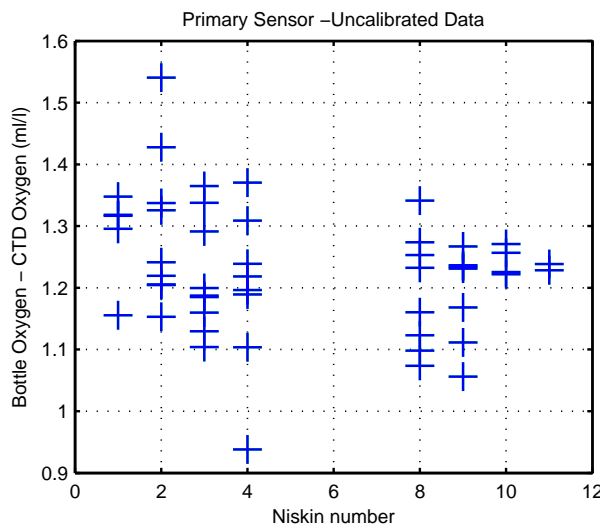
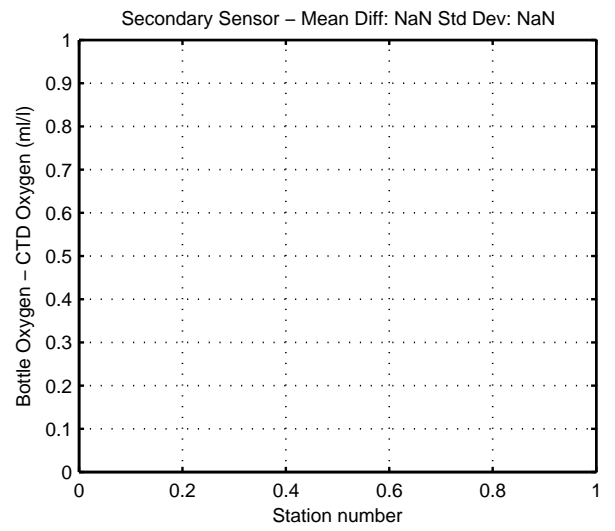
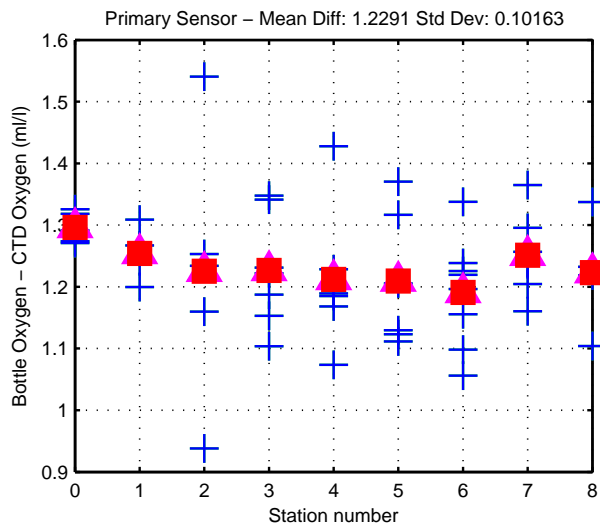
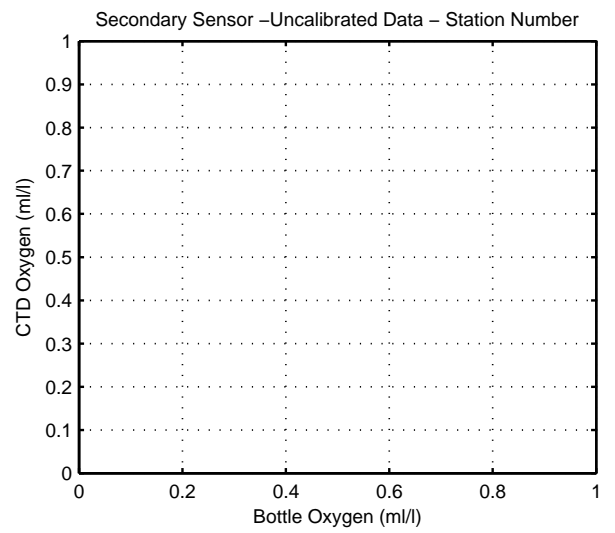
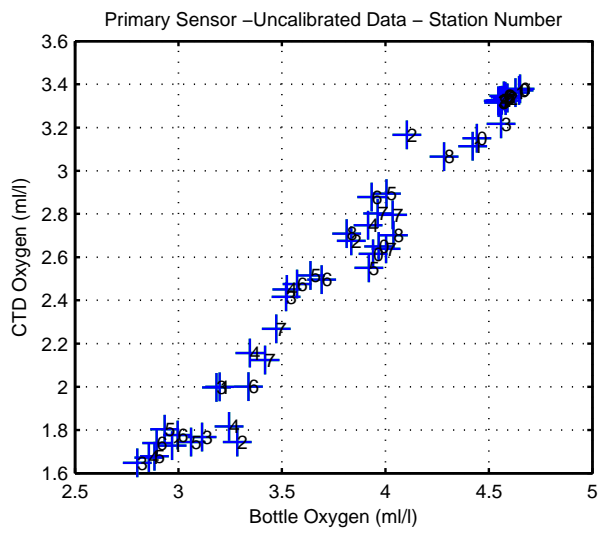


Figure 14: WS0402

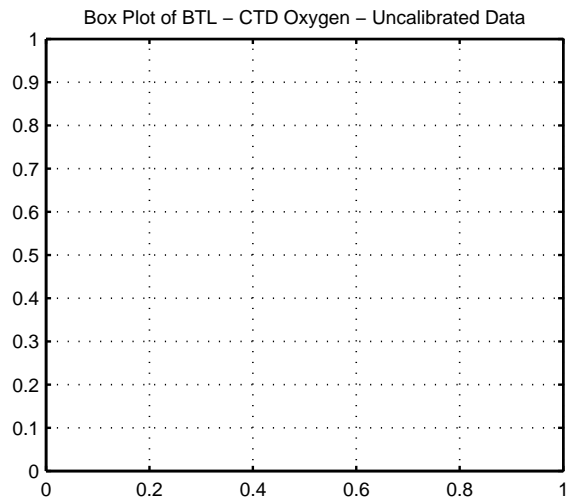
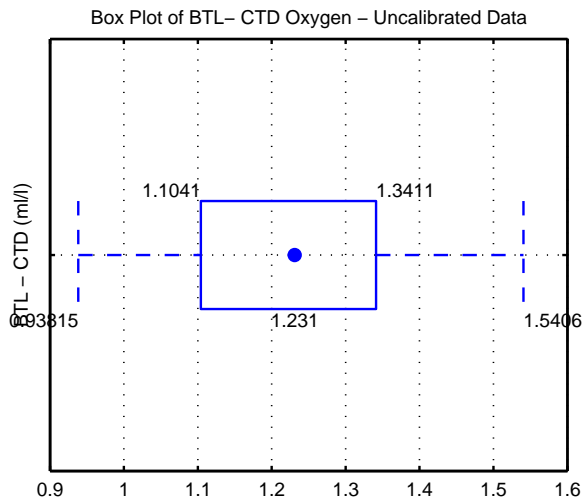
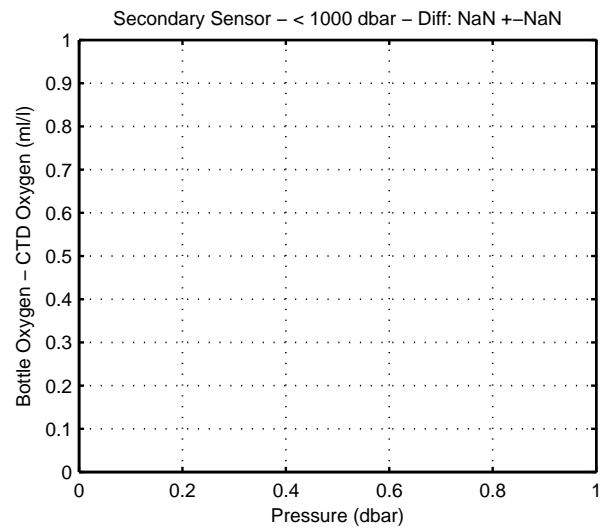
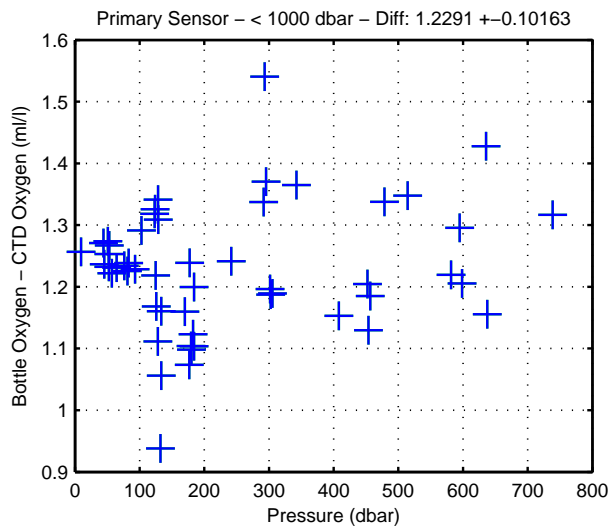
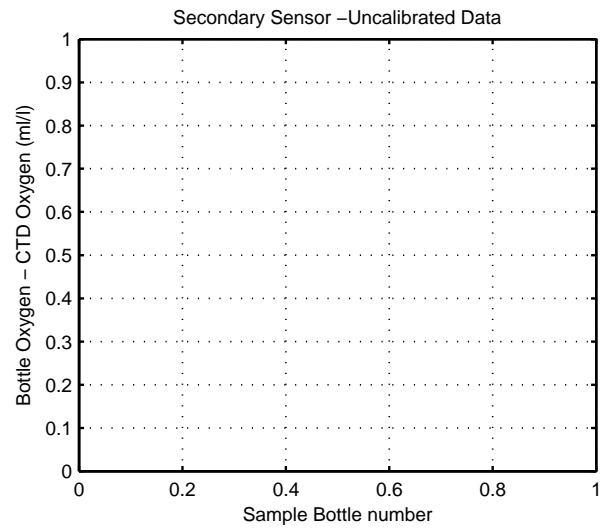
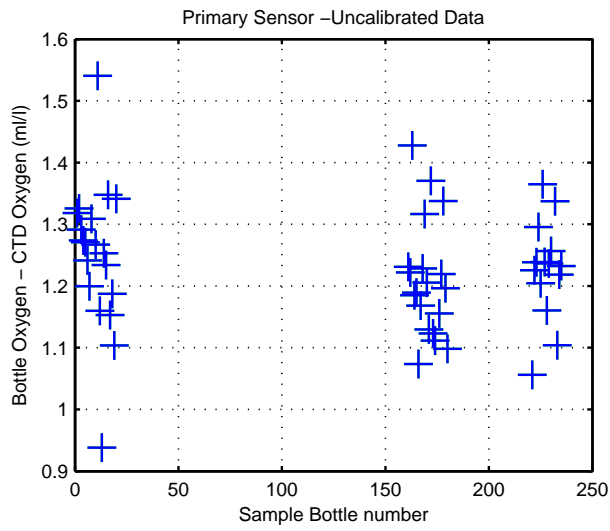


Figure 15: WS0402

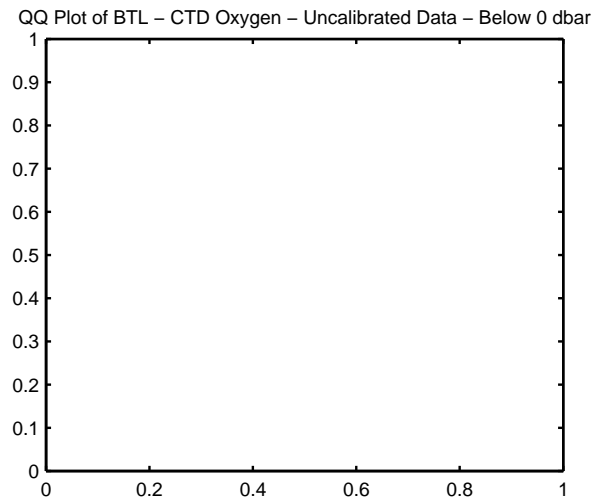
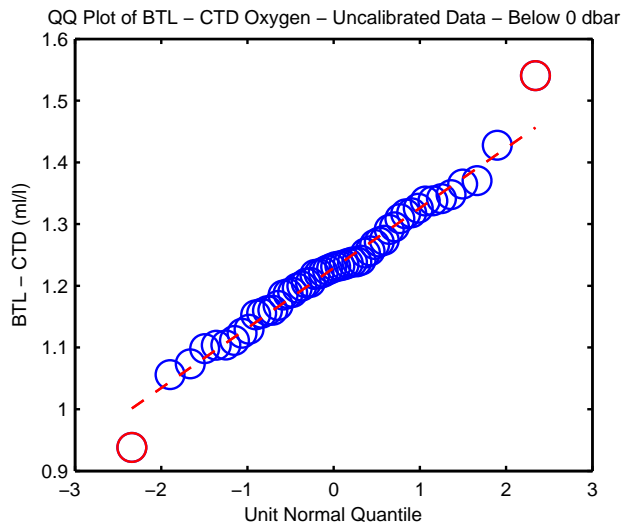
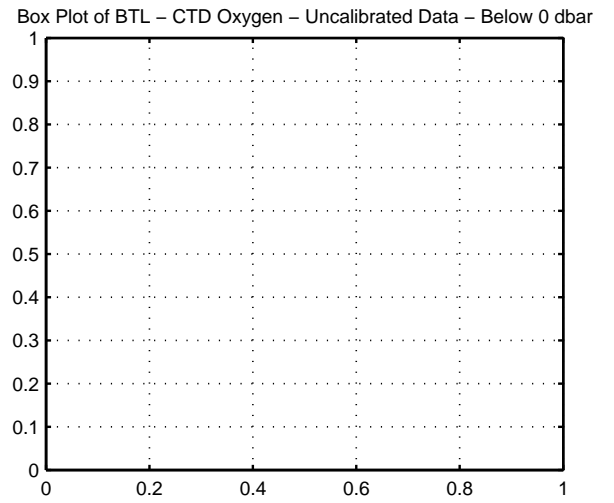
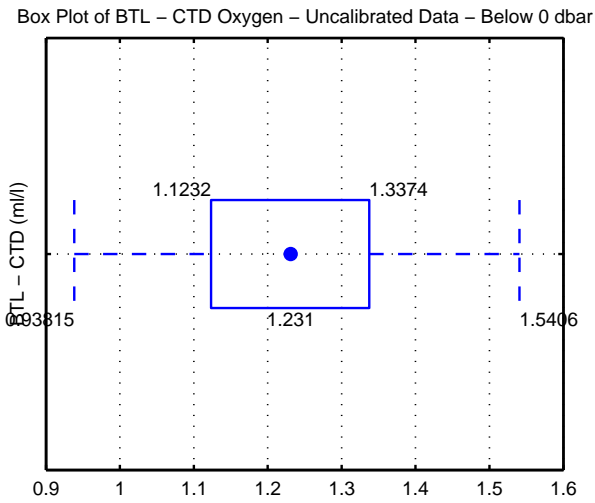
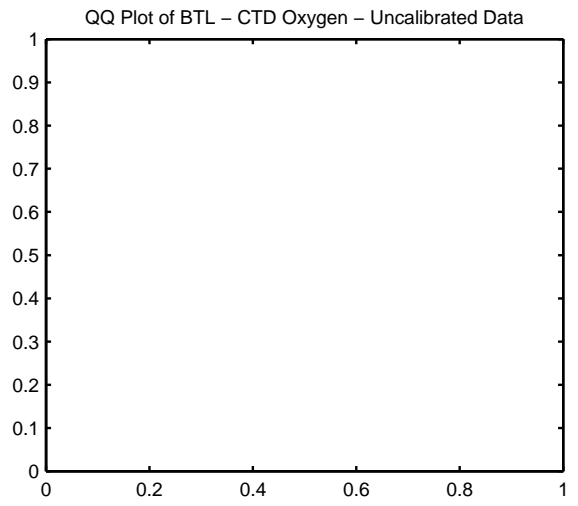
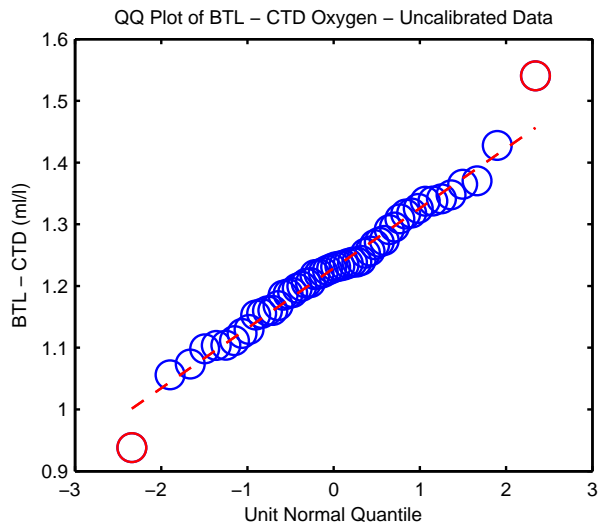


Figure 16: WS0402

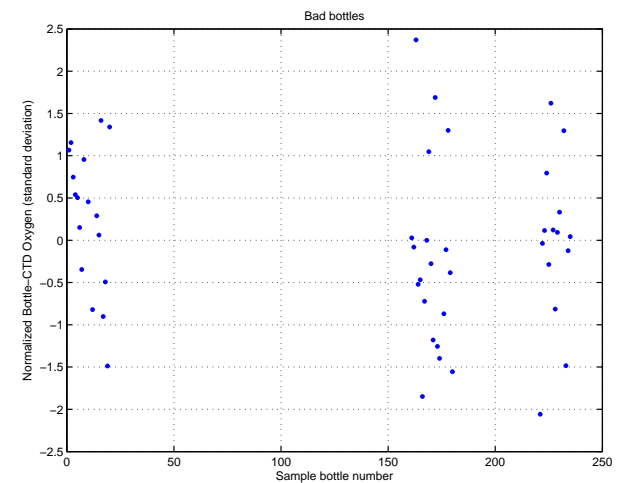
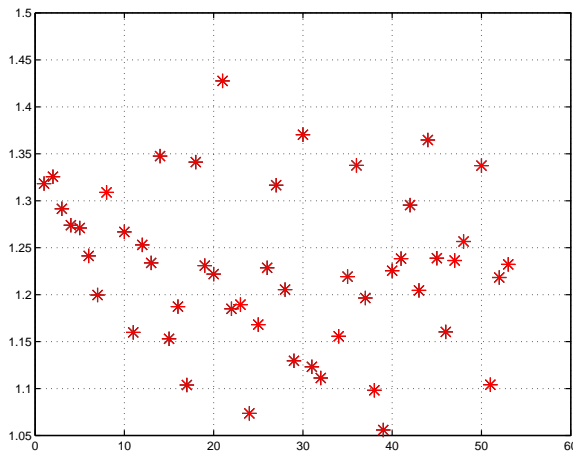
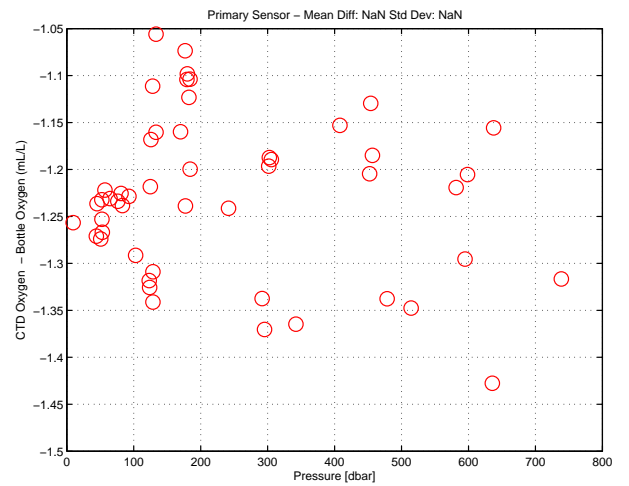
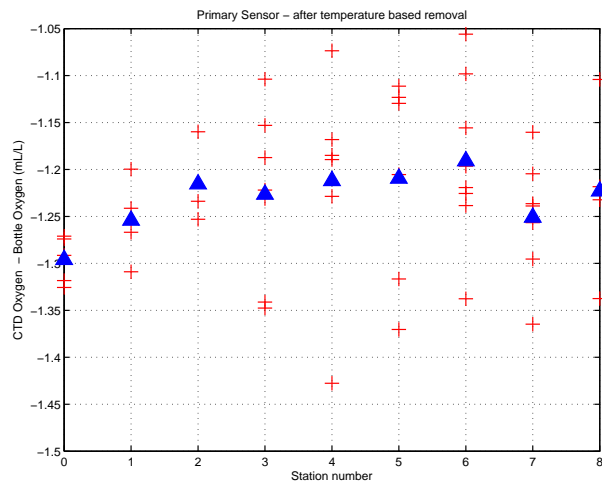
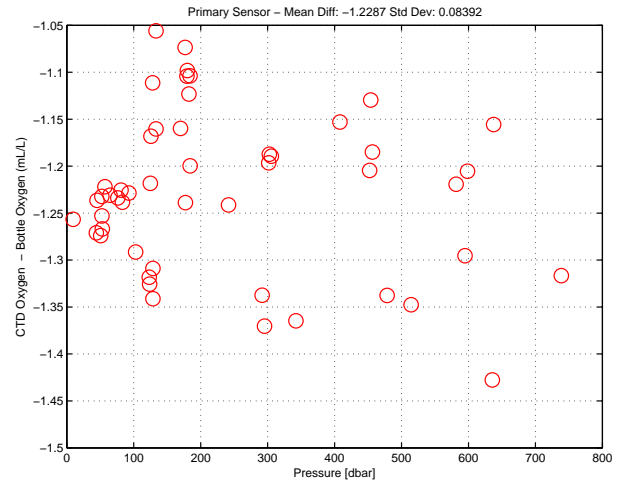
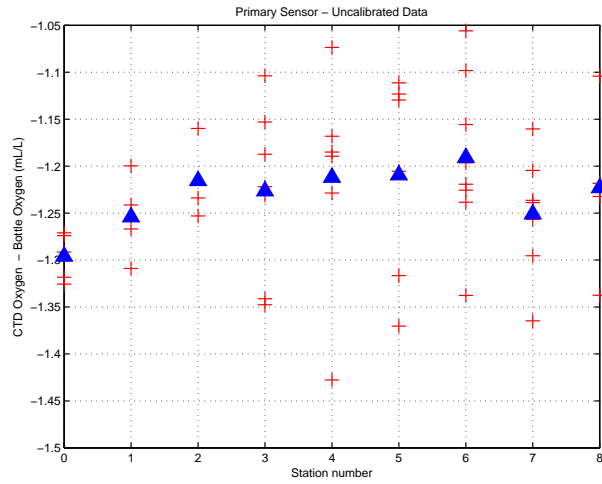


Figure 17: WS0402. Oxygen Calibration

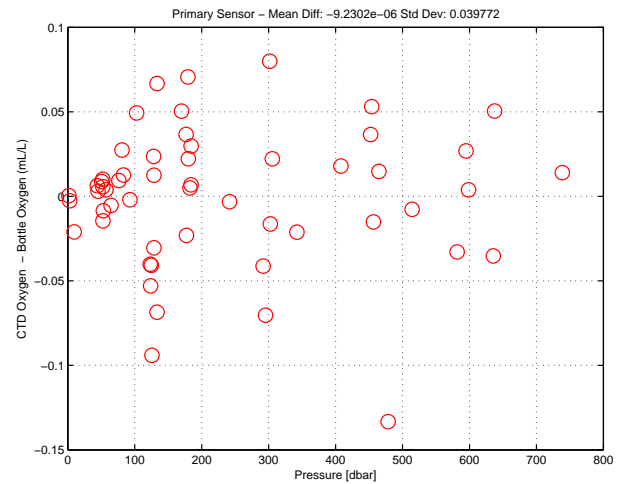
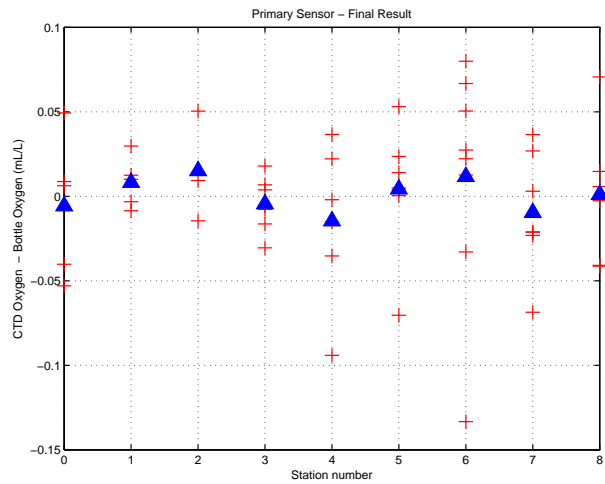


Figure 18: WS0402. Oxygen Calibration (cont.)

Florida Straits R/V FG Walton Smith
 CTD Station 0 (CTD000)
 Latitude 27.002 N Longitude 79.931 W
 09-Jan-2004 06:13 Z

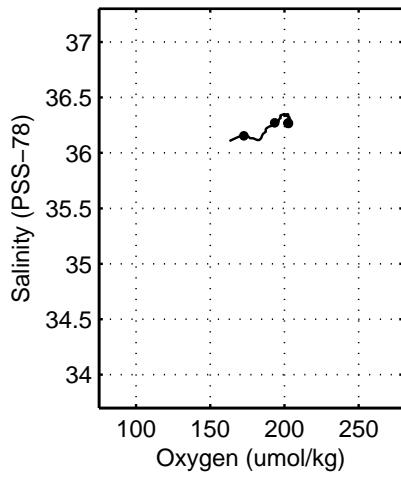
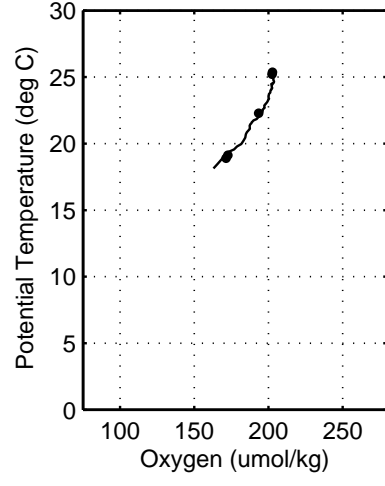
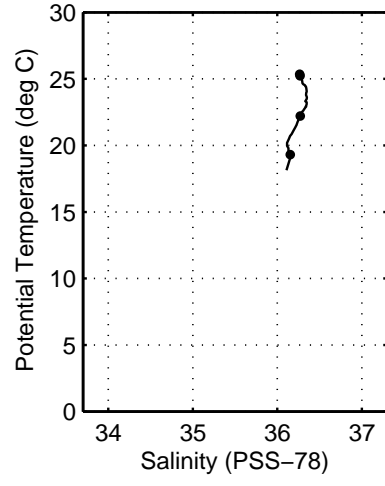
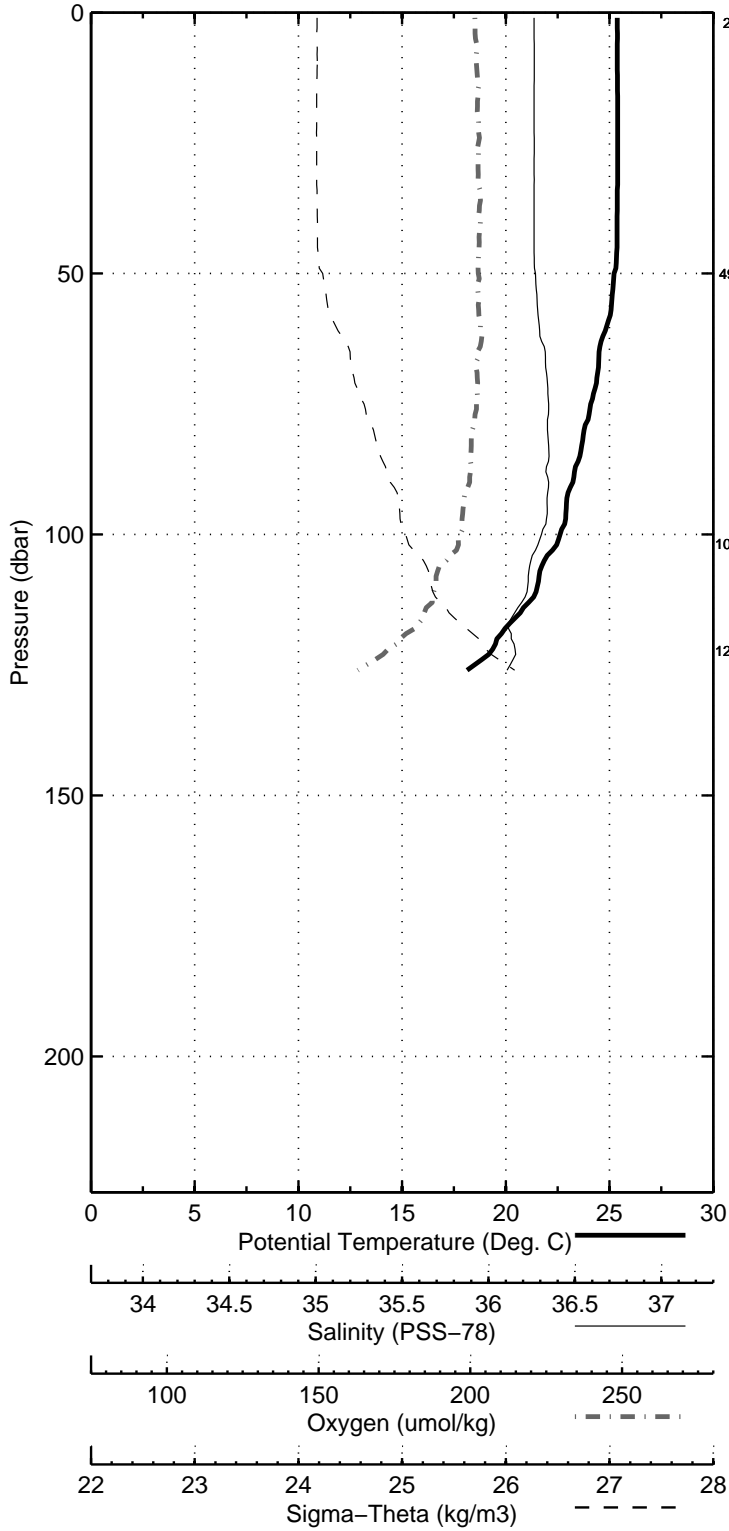


Figure 19: WS0402

Florida Straits R/V FG Walton Smith
 CTD Station 1 (CTD001)
 Latitude 27.001 N Longitude 79.868 W
 09-Jan-2004 07:20 Z

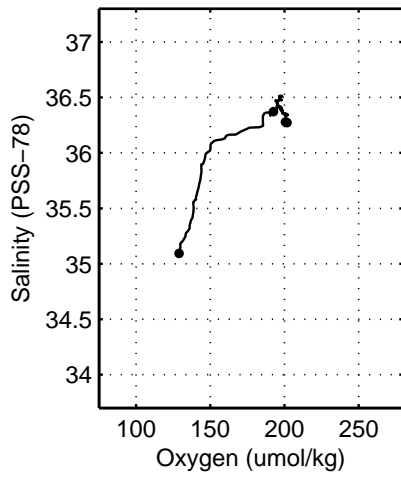
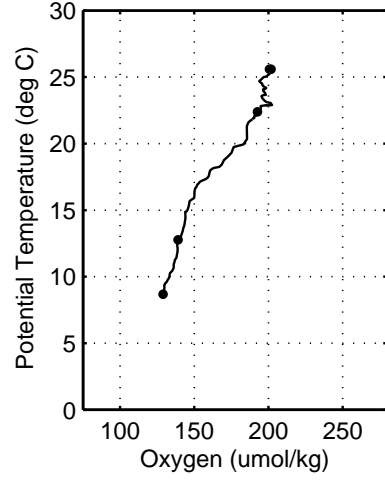
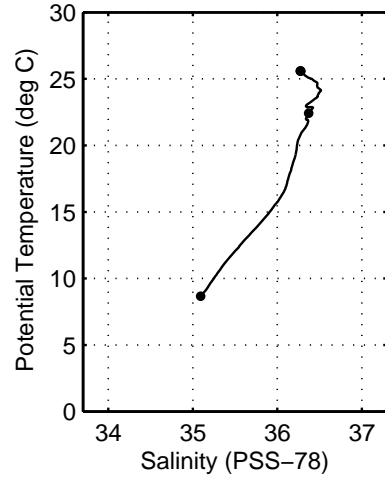
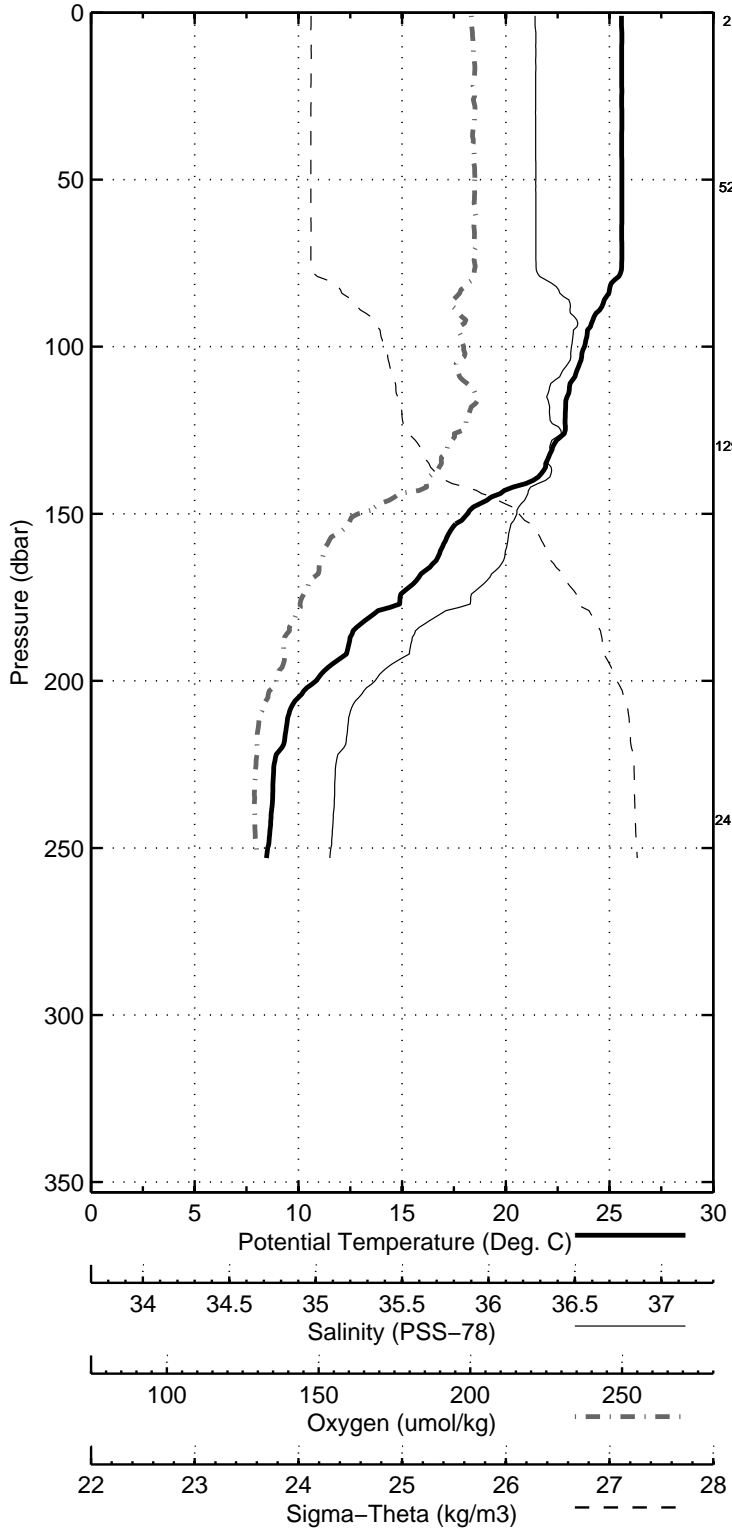


Figure 20: WS0402

Florida Straits R/V FG Walton Smith
 CTD Station 2 (CTD002)
 Latitude 27.000 N Longitude 79.784 W
 09-Jan-2004 08:24 Z

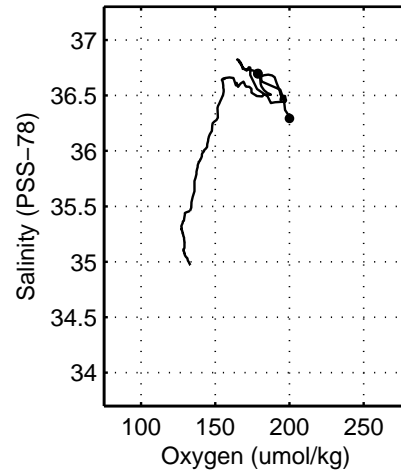
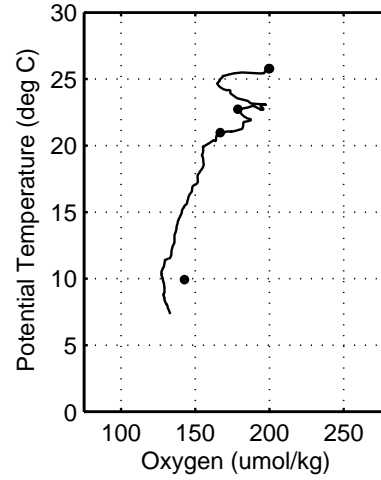
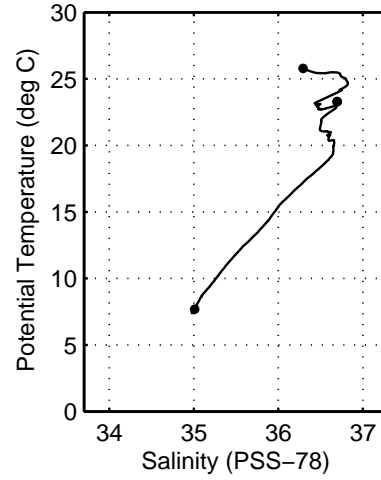
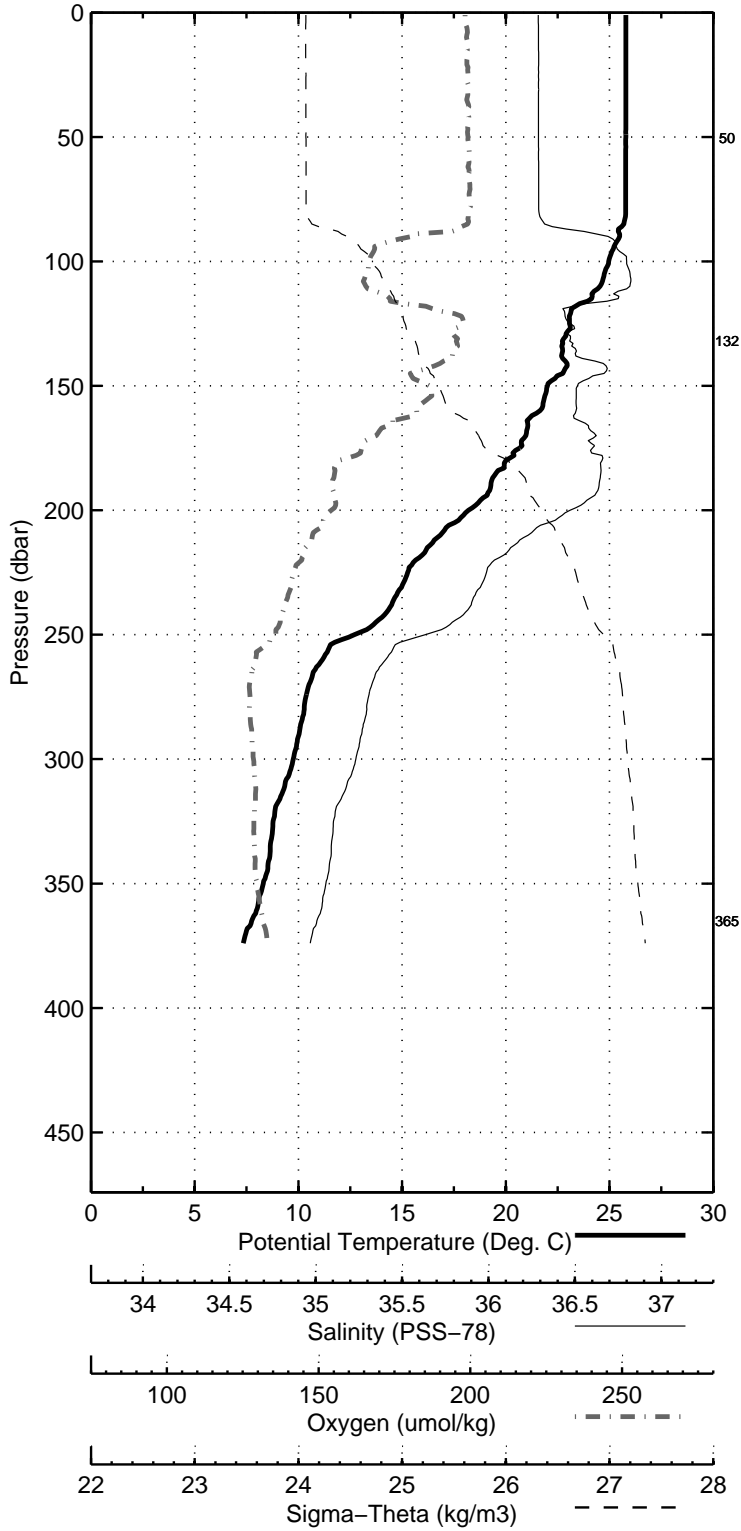


Figure 21: WS0402

Florida Straits R/V FG Walton Smith
 CTD Station 3 (CTD003)
 Latitude 26.999 N Longitude 79.684 W
 09-Jan-2004 09:44 Z

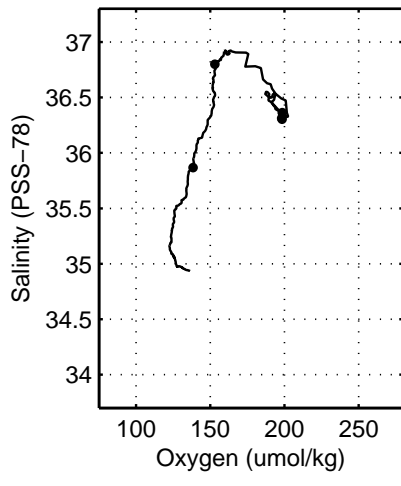
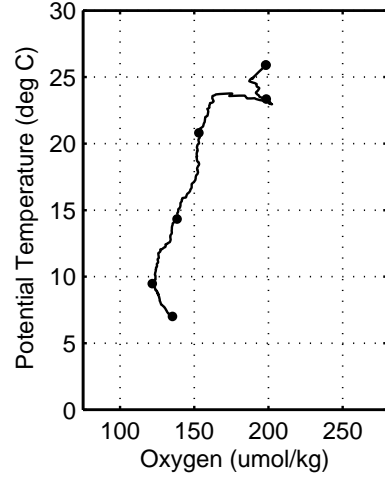
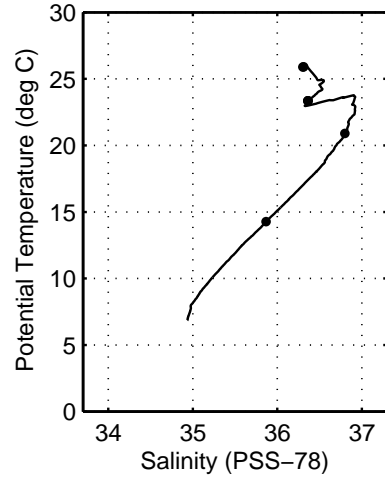
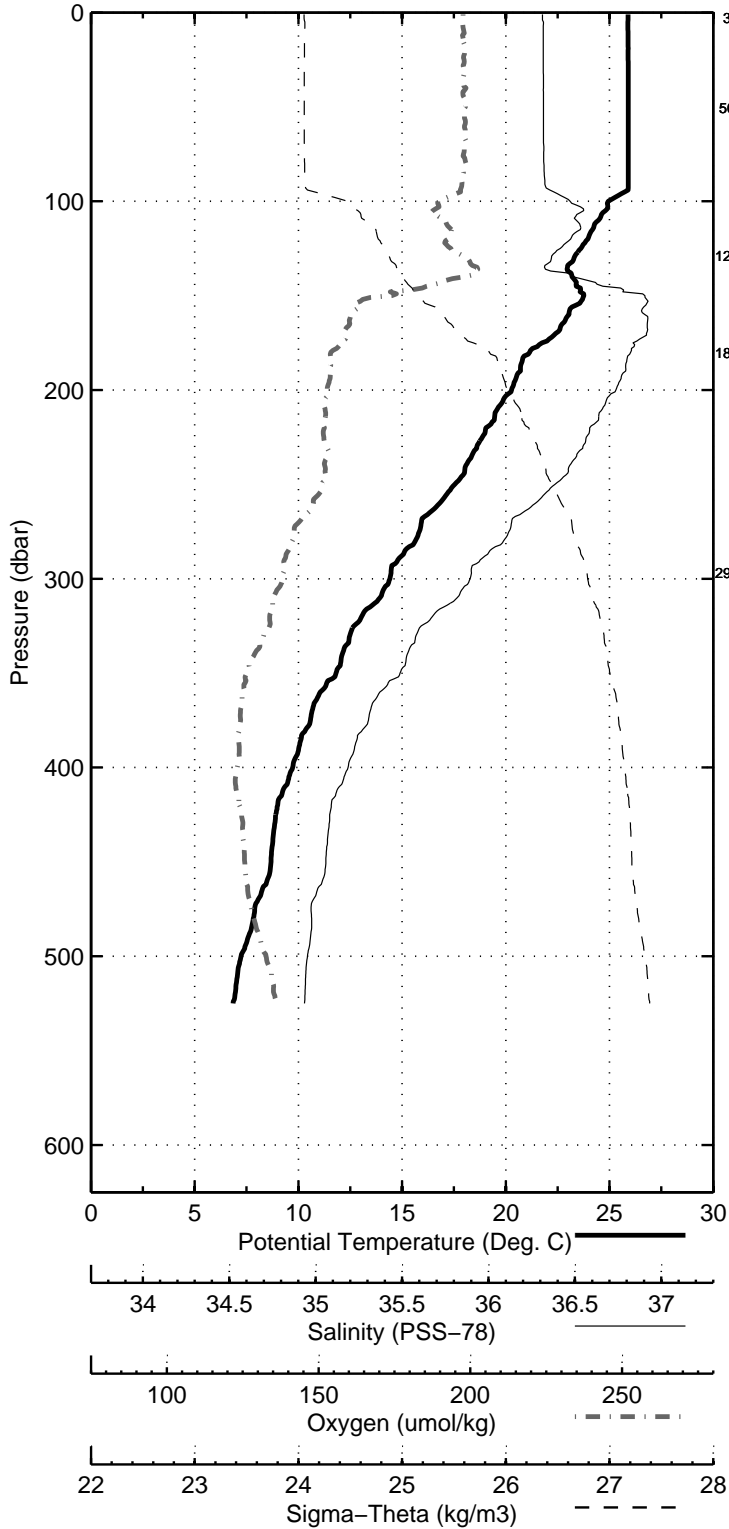


Figure 22: WS0402

Florida Straits R/V FG Walton Smith
 CTD Station 4 (CTD004)
 Latitude 27.000 N Longitude 79.617 W
 09-Jan-2004 11:10 Z

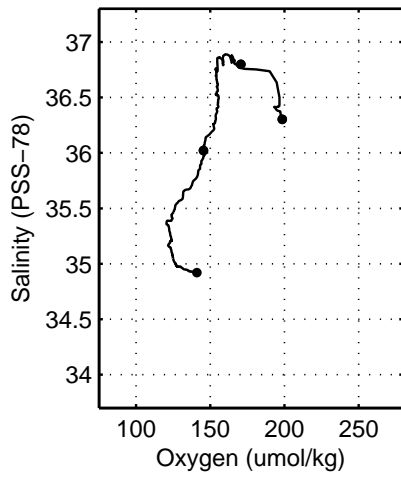
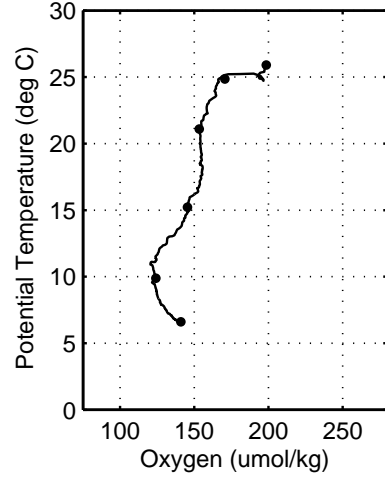
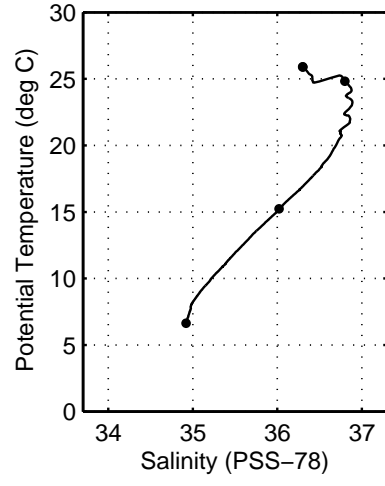
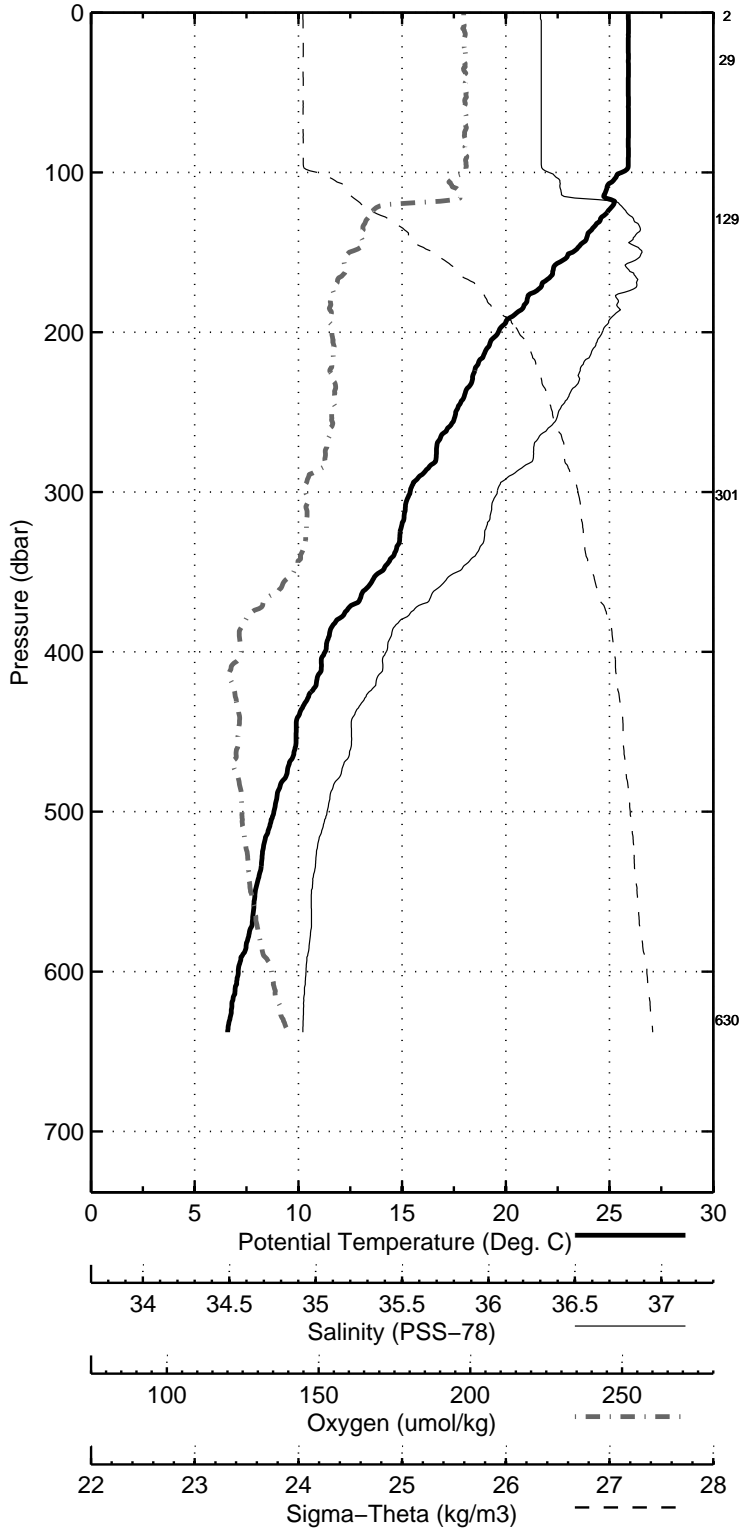


Figure 23: WS0402

Florida Straits R/V FG Walton Smith
 CTD Station 5 (CTD005)
 Latitude 26.997 N Longitude 79.499 W
 09-Jan-2004 12:38 Z

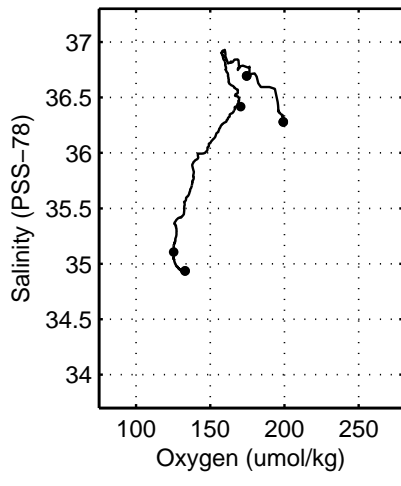
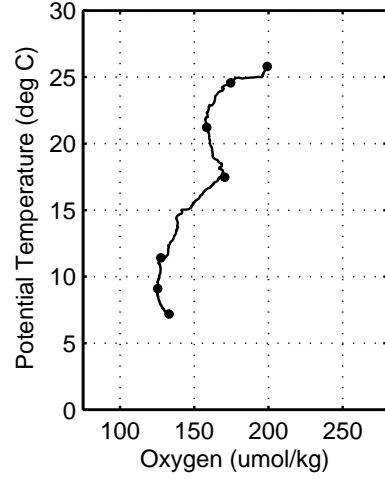
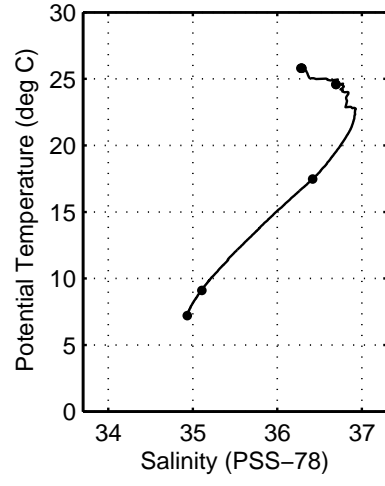
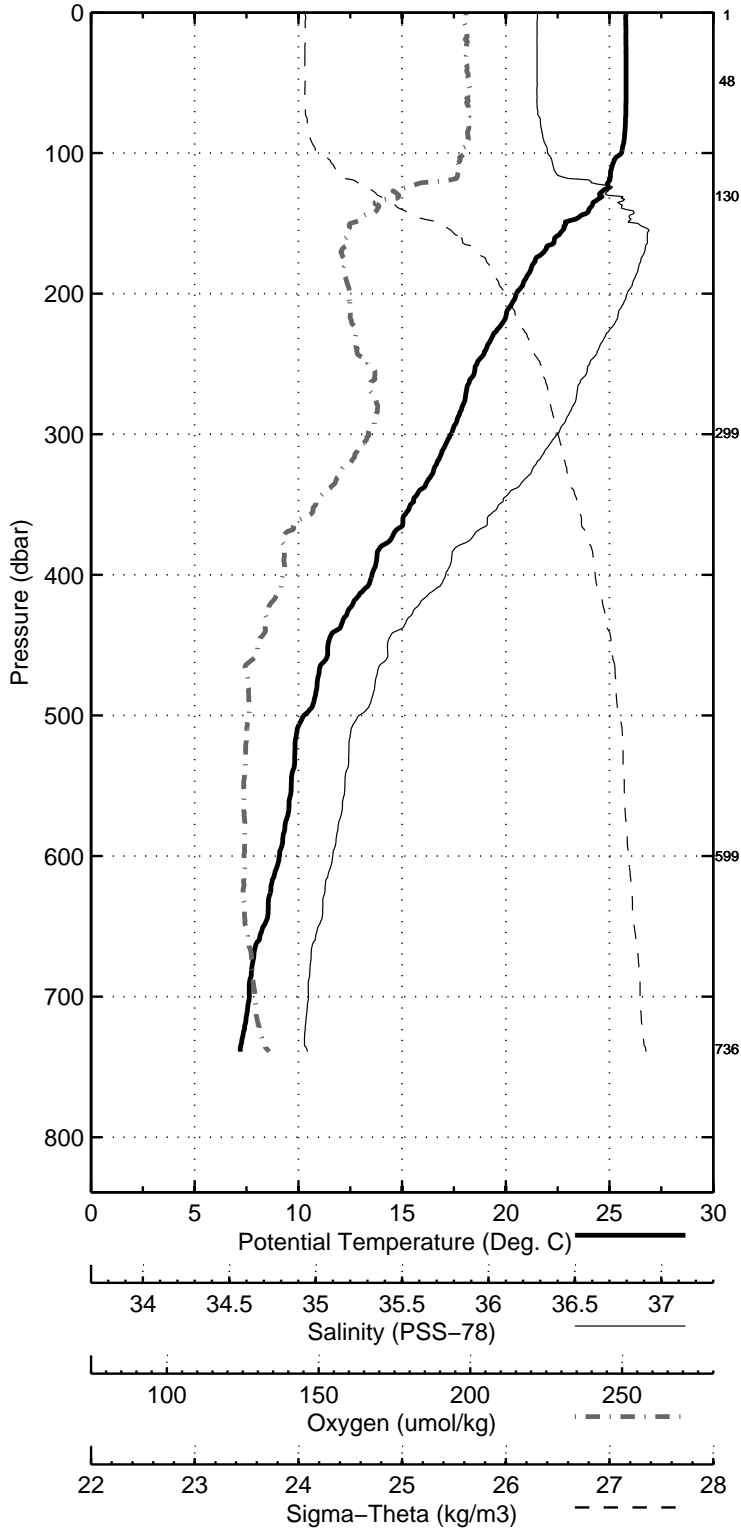


Figure 24: WS0402

Florida Straits R/V FG Walton Smith
 CTD Station 6 (CTD006)
 Latitude 26.999 N Longitude 79.383 W
 09-Jan-2004 14:00 Z

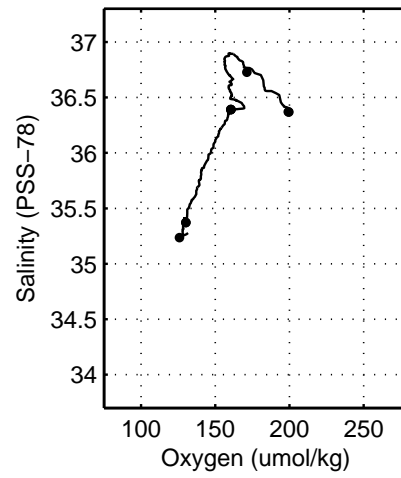
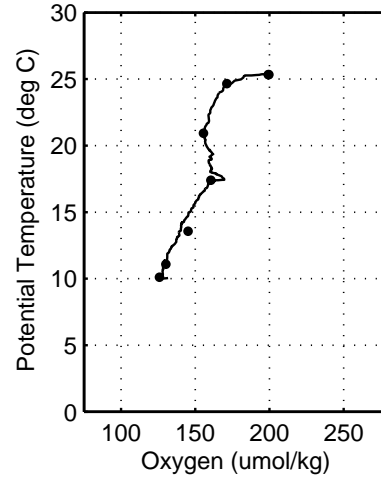
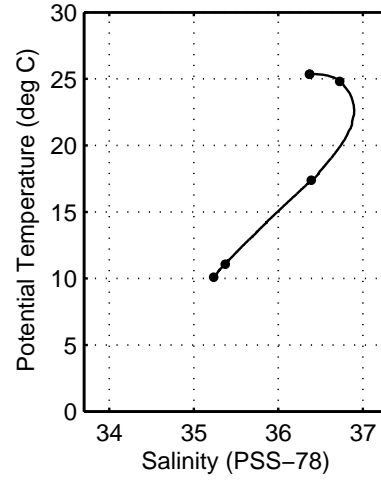
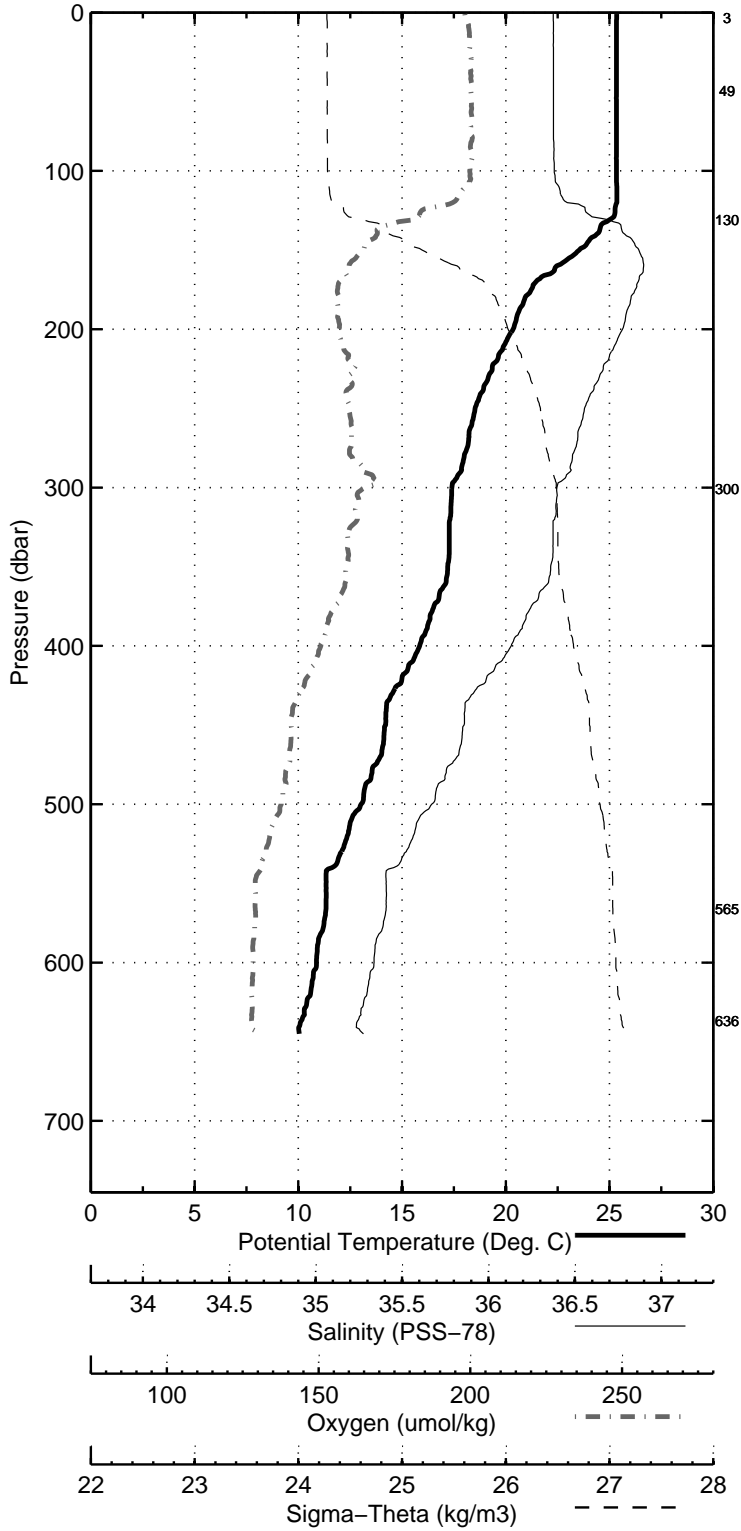


Figure 25: WS0402

Florida Straits R/V FG Walton Smith
 CTD Station 7 (CTD007)
 Latitude 27.001 N Longitude 79.283 W
 09-Jan-2004 15:10 Z

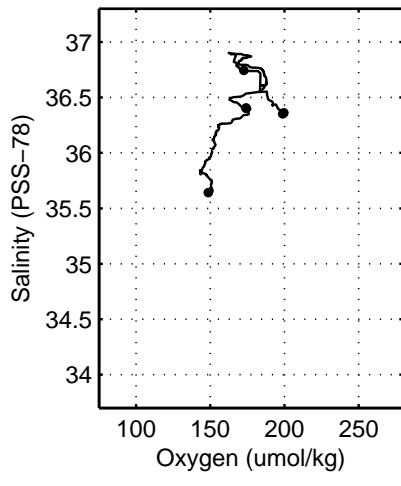
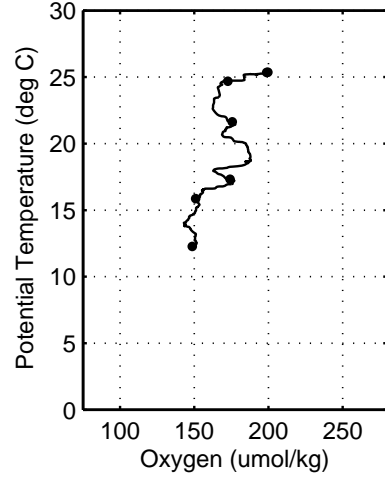
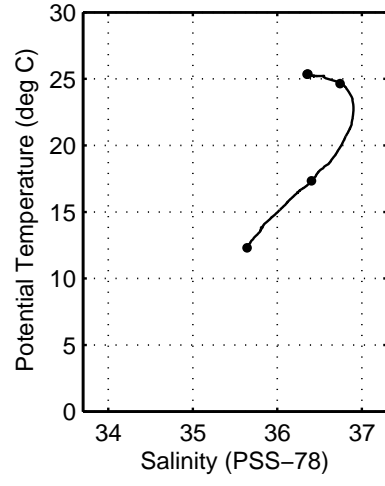
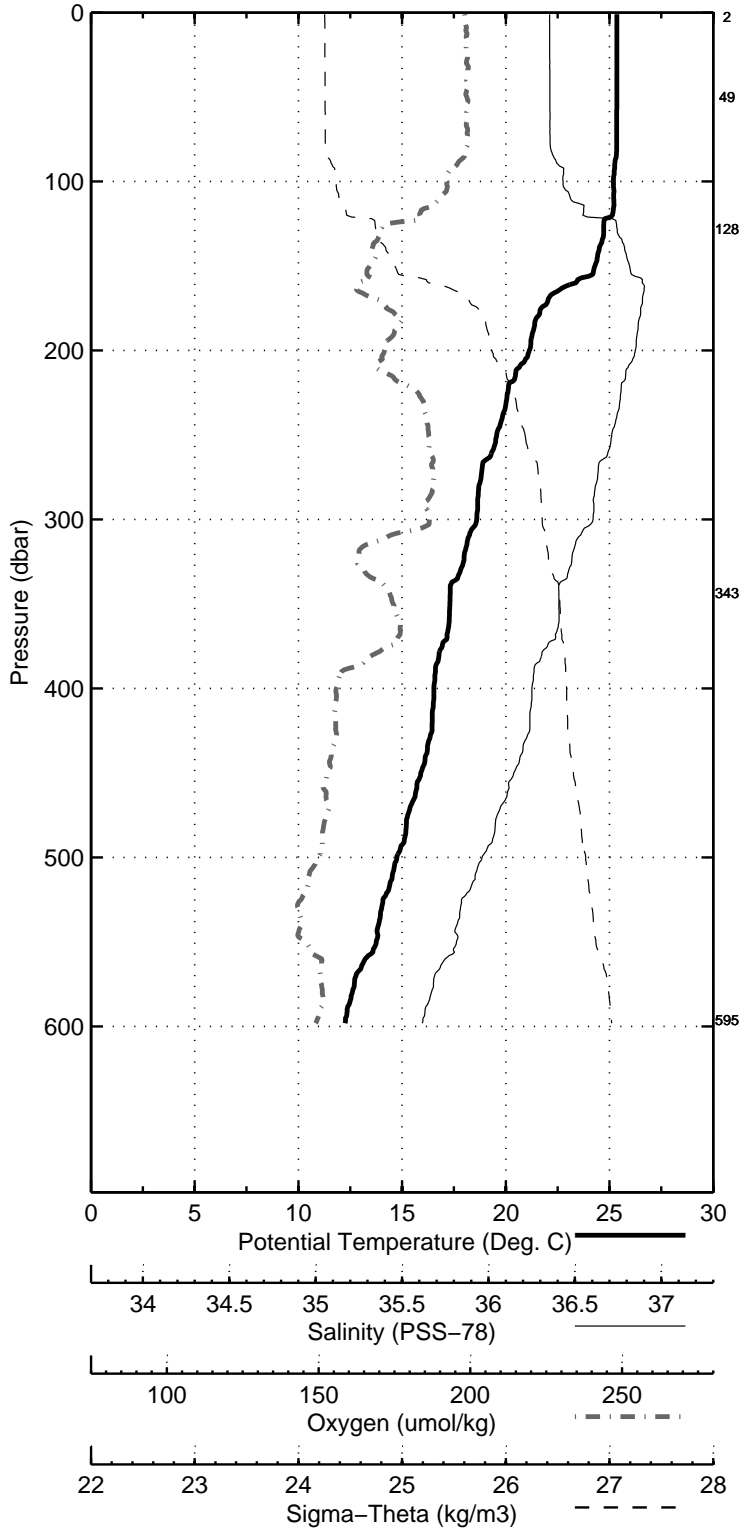


Figure 26: WS0402

Florida Straits R/V FG Walton Smith
 CTD Station 8 (CTD008)
 Latitude 27.001 N Longitude 79.199 W
 09-Jan-2004 16:08 Z

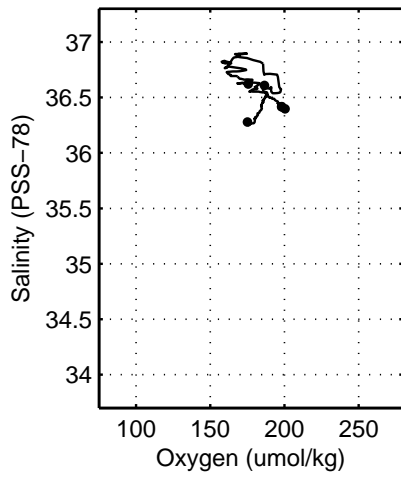
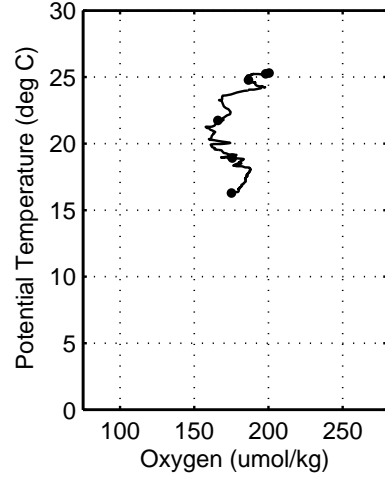
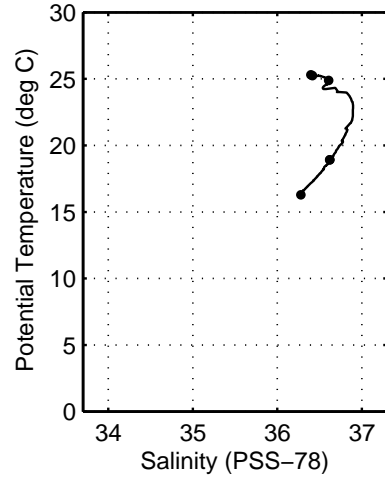
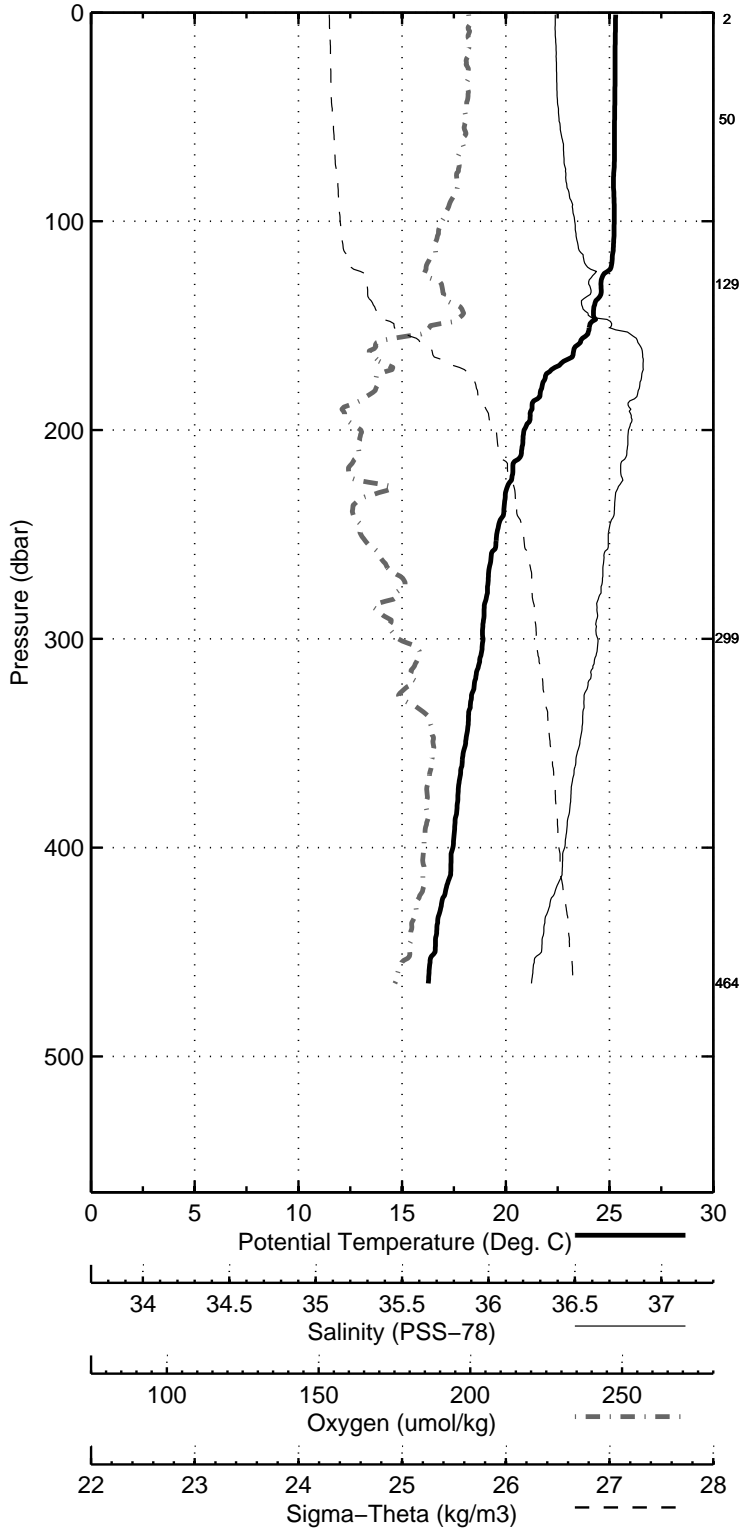


Figure 27: WS0402