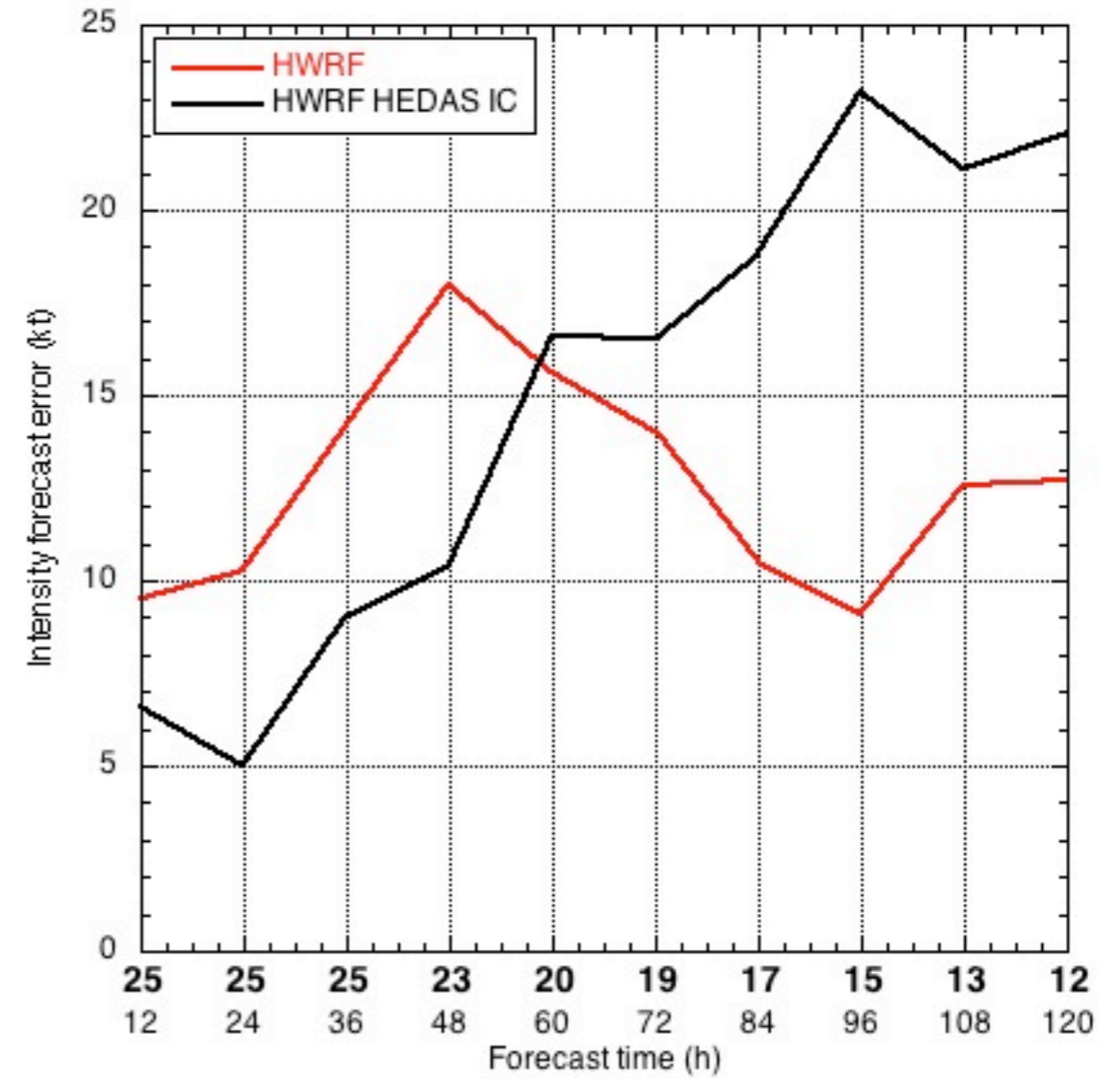
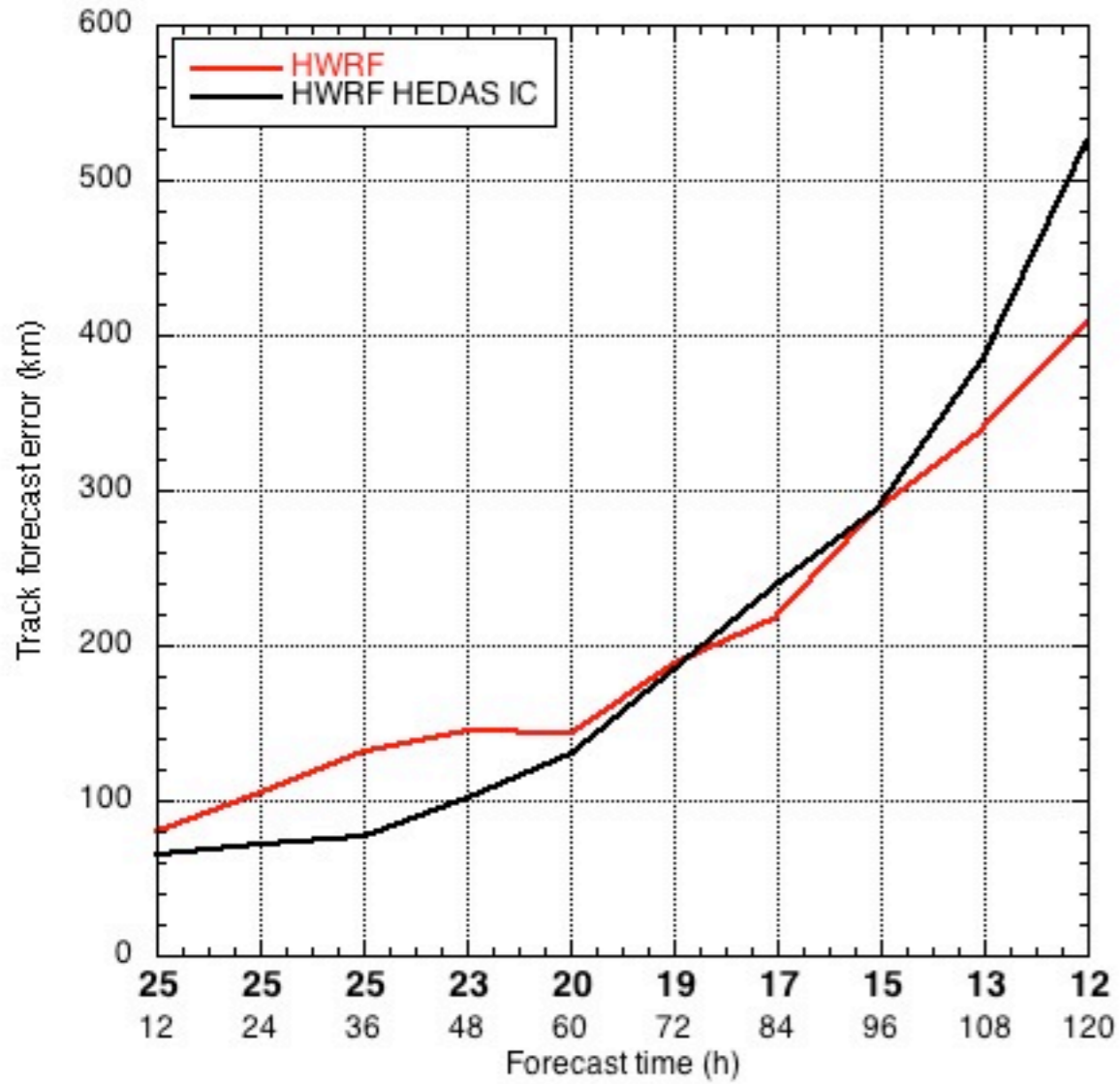
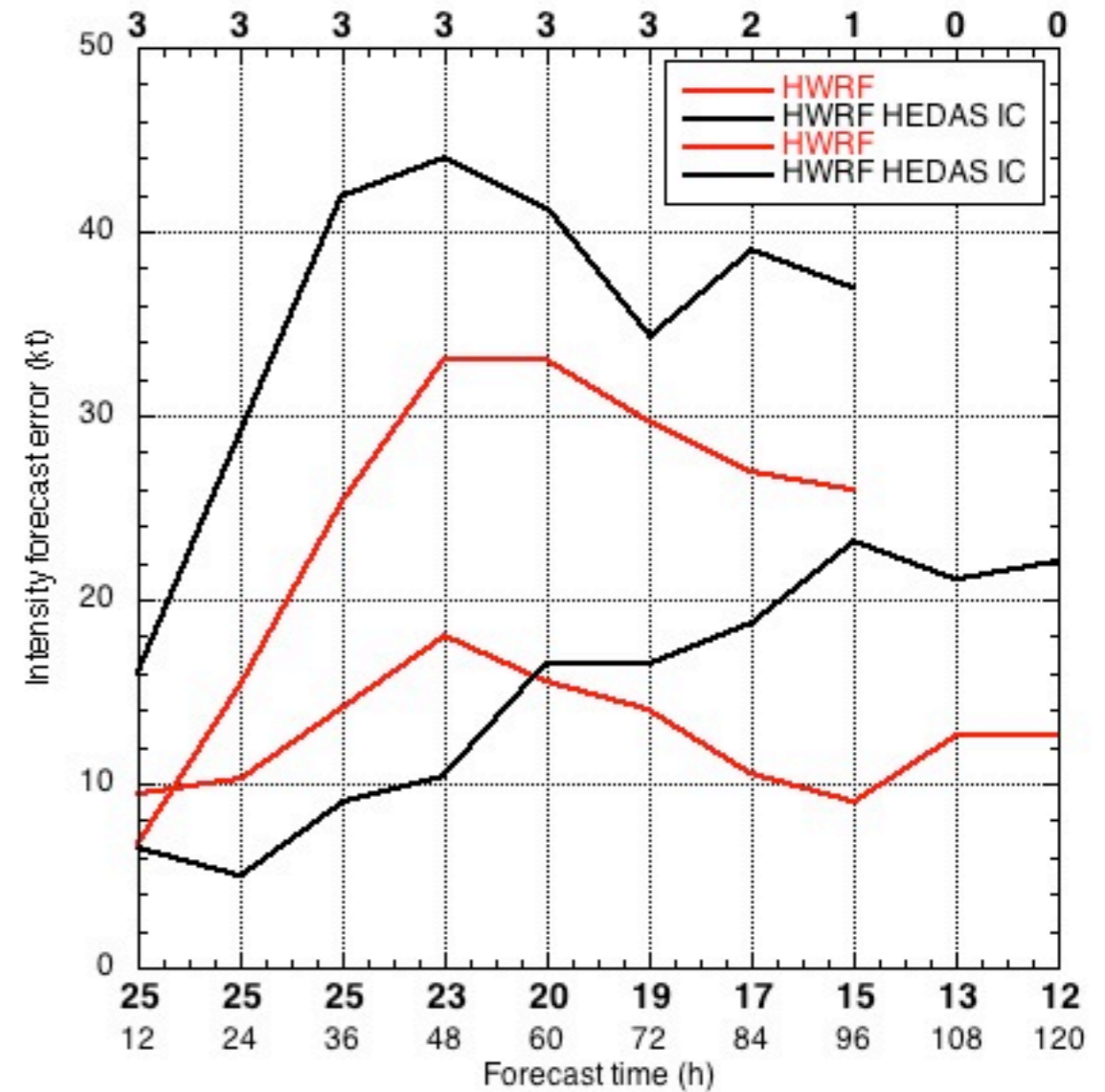
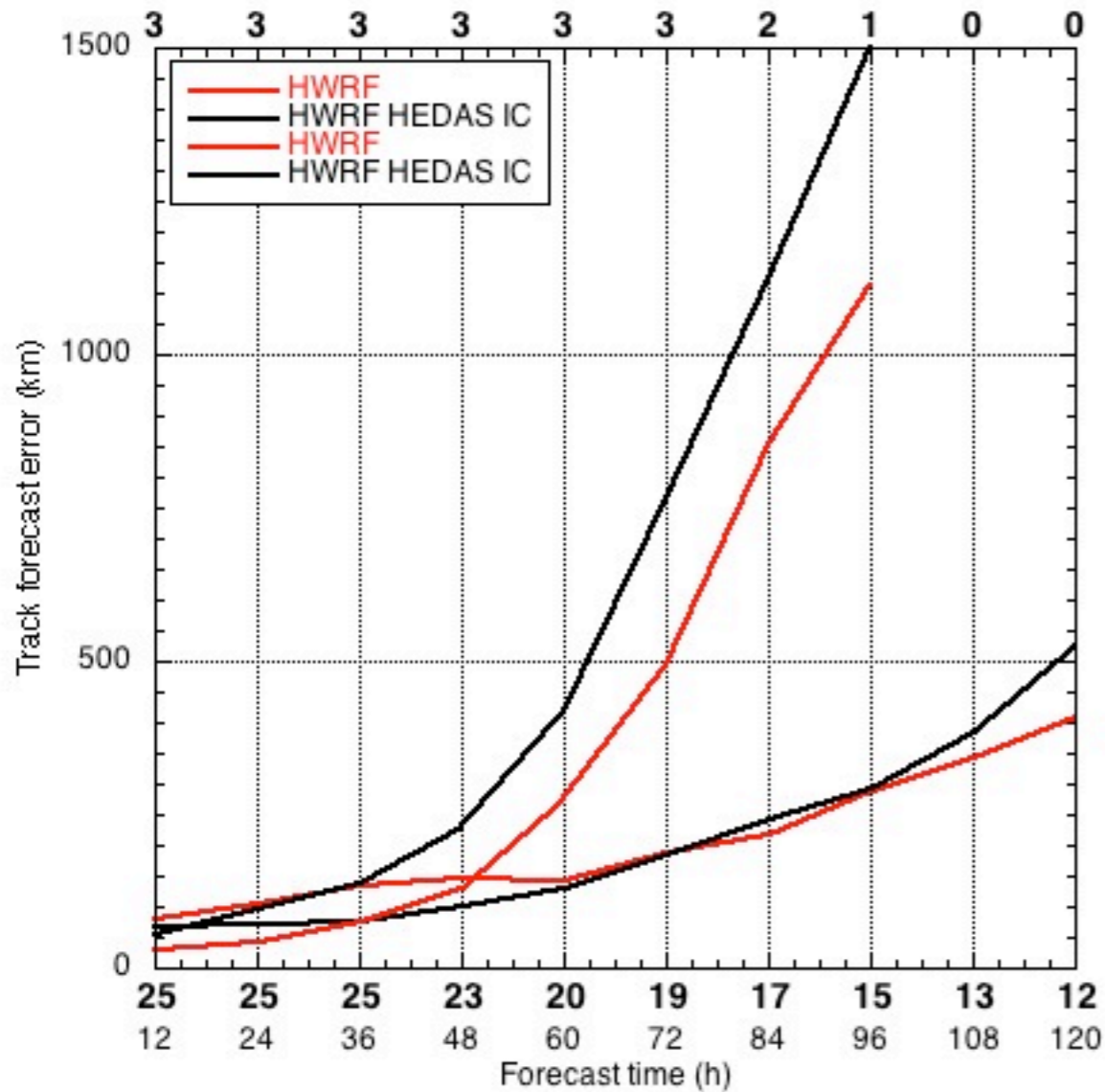


Isaac results (preliminary)

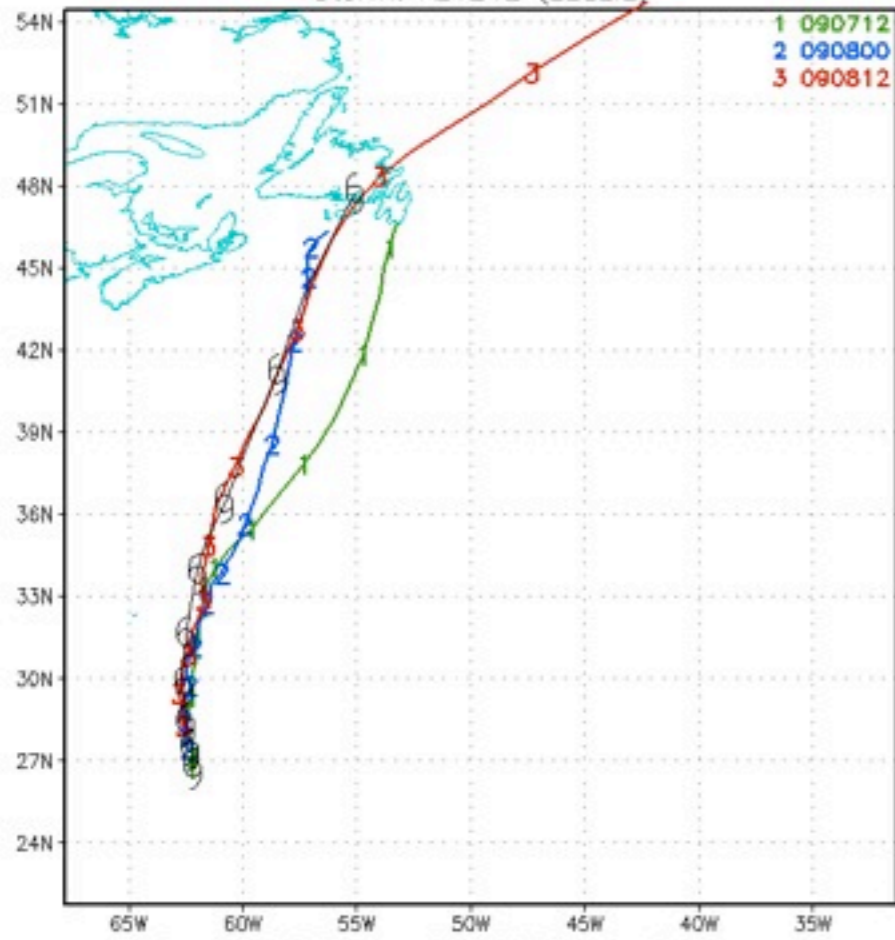


And Leslie (preliminary)



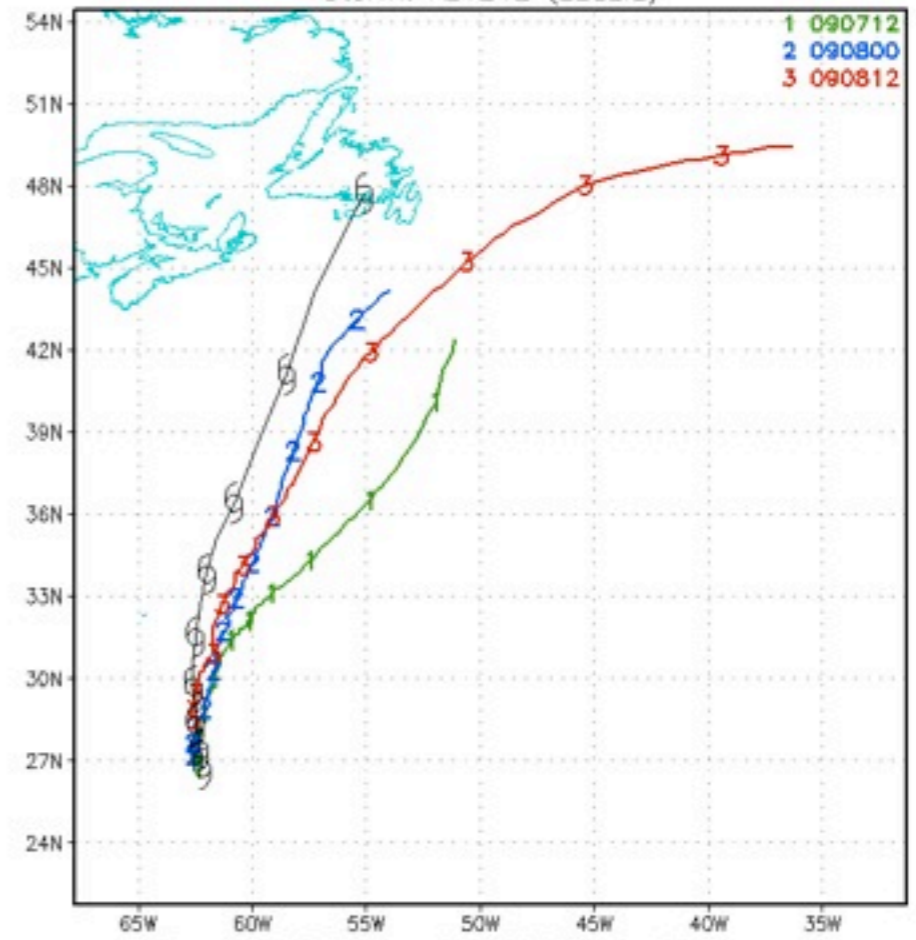
1. Why does HEDAS significantly degrade the forecasts?
2. Why are the Leslie forecasts so poor?

2012 Tropical Cyclone Tracks
Storm: AL1212 (LESLIE)



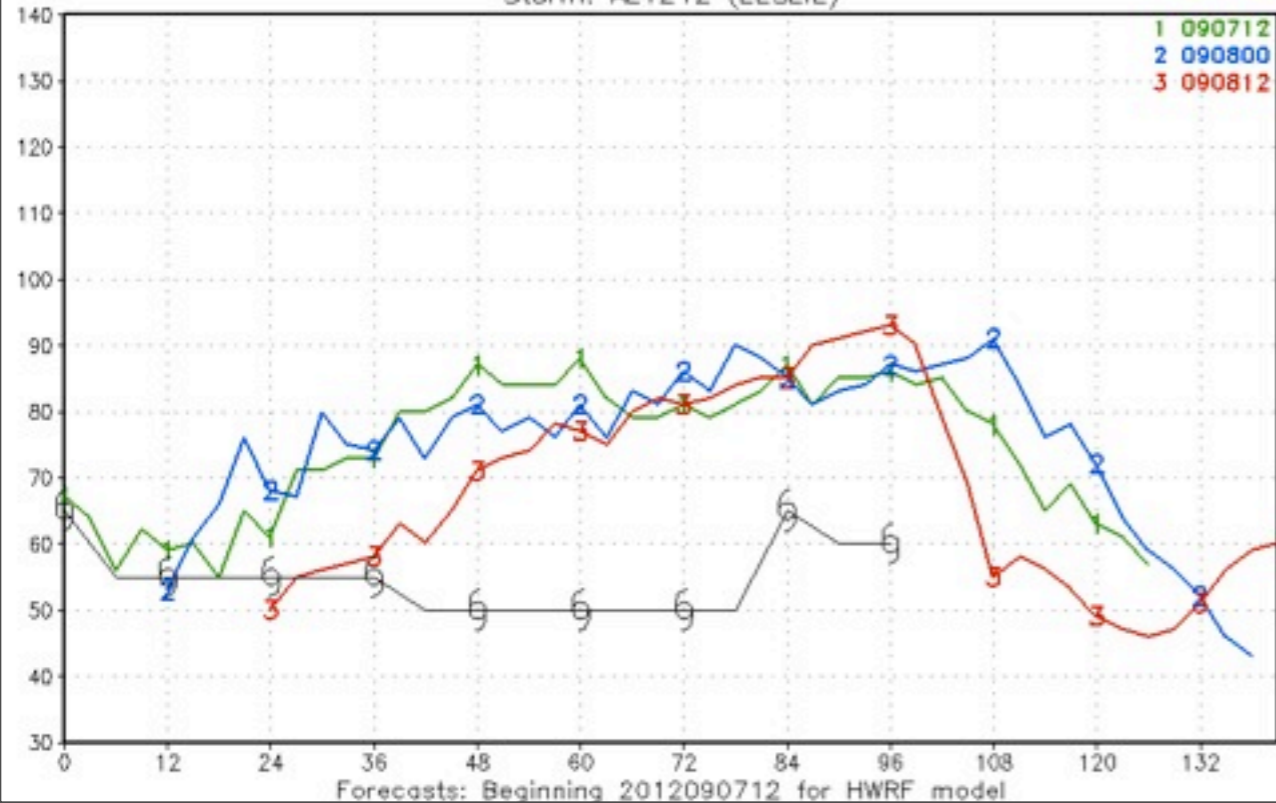
Forecasts: Beginning 2012090712 for HWRf model
Observed: Beginning 2012090712, every 12 hours

2012 Tropical Cyclone Tracks
Storm: AL1212 (LESLIE)



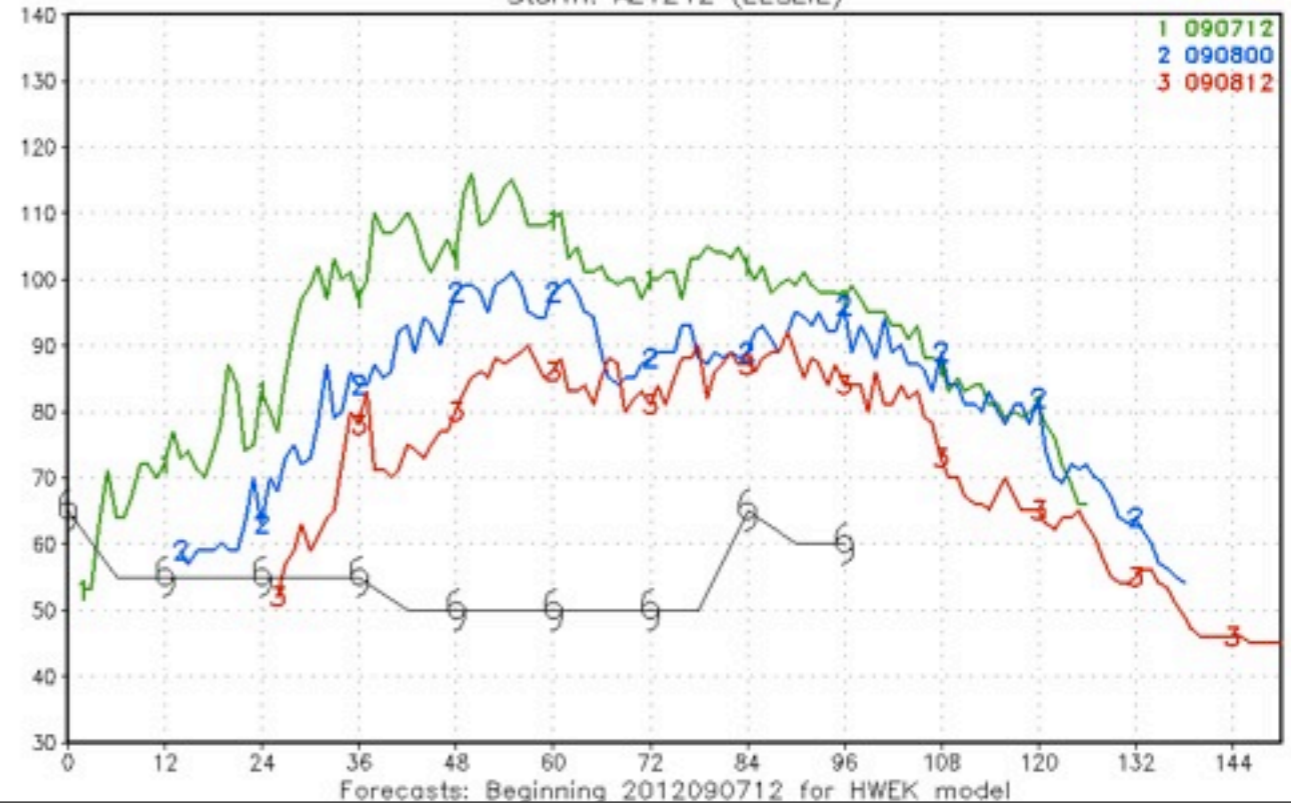
Forecasts: Beginning 2012090712 for HWEK model
Observed: Beginning 2012090712, every 12 hours

2012 Tropical Cyclone Tracks
Storm: AL1212 (LESLIE)

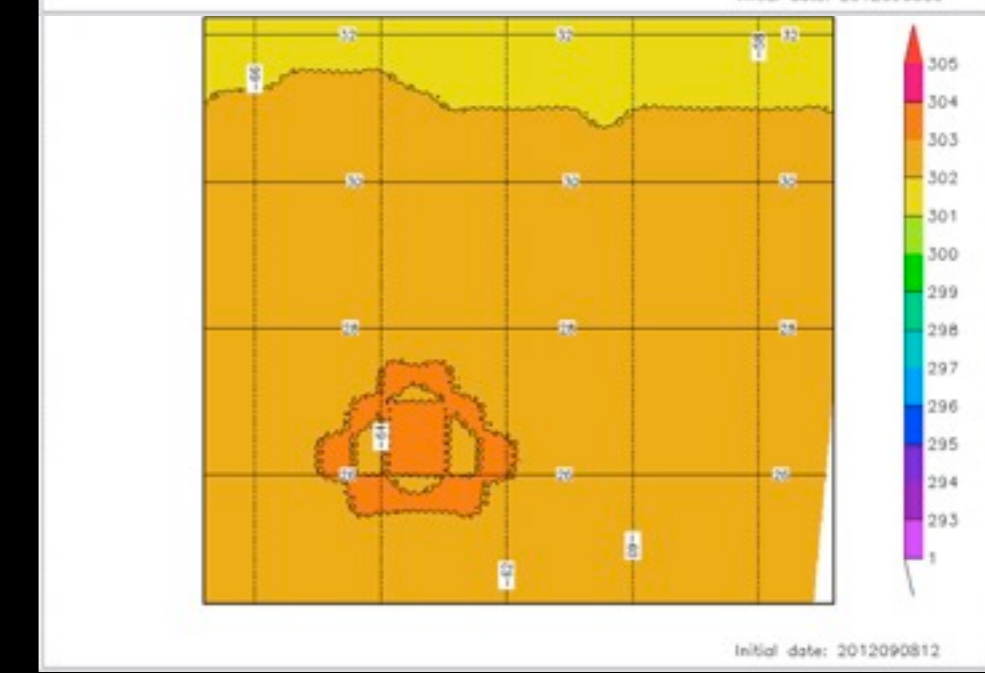
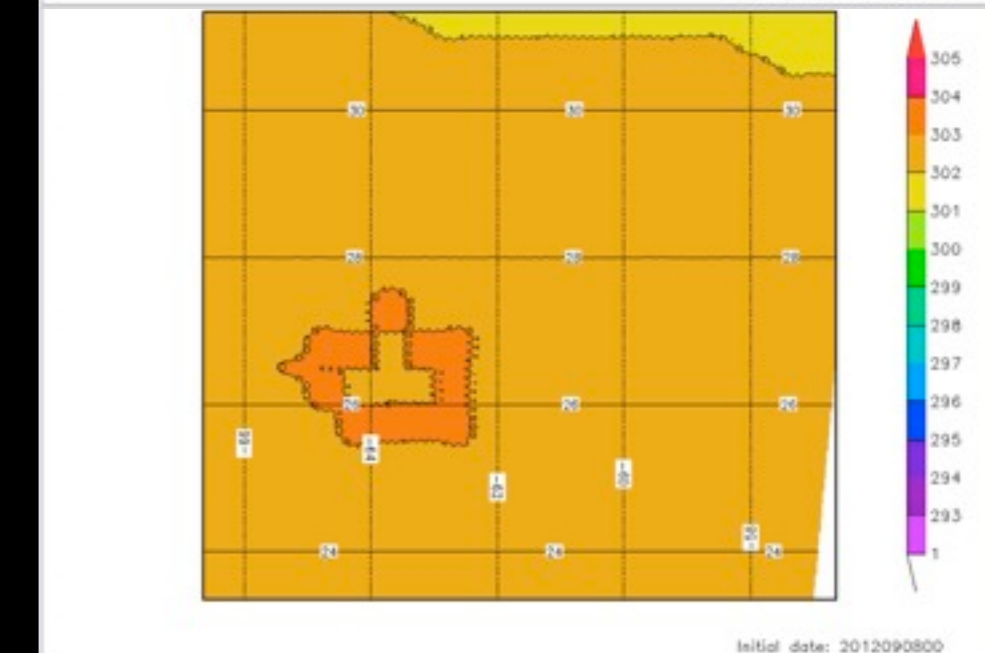
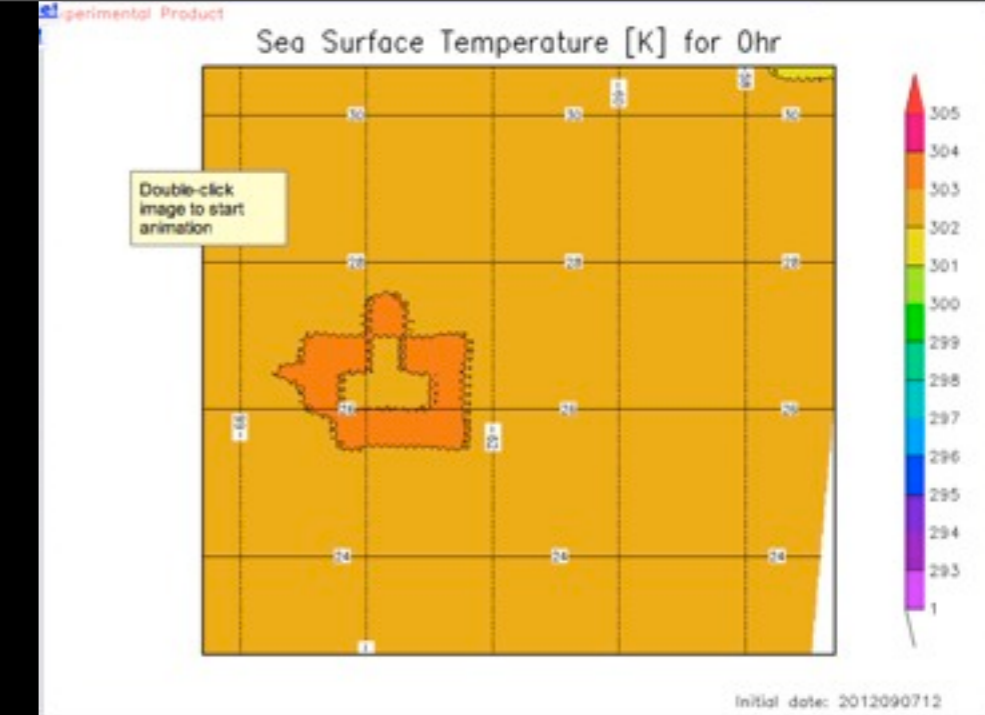
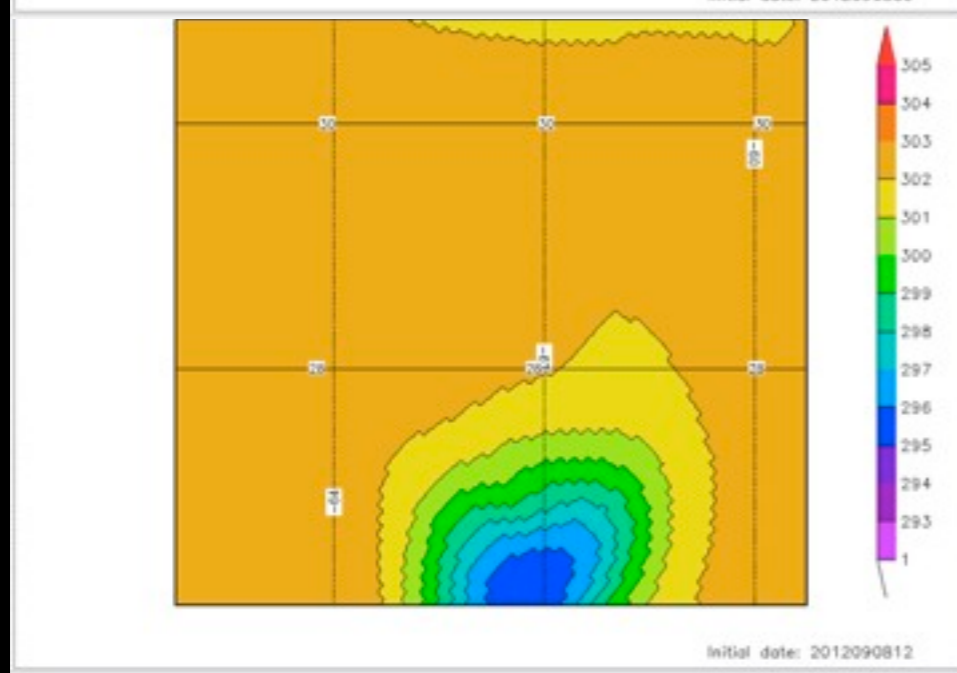
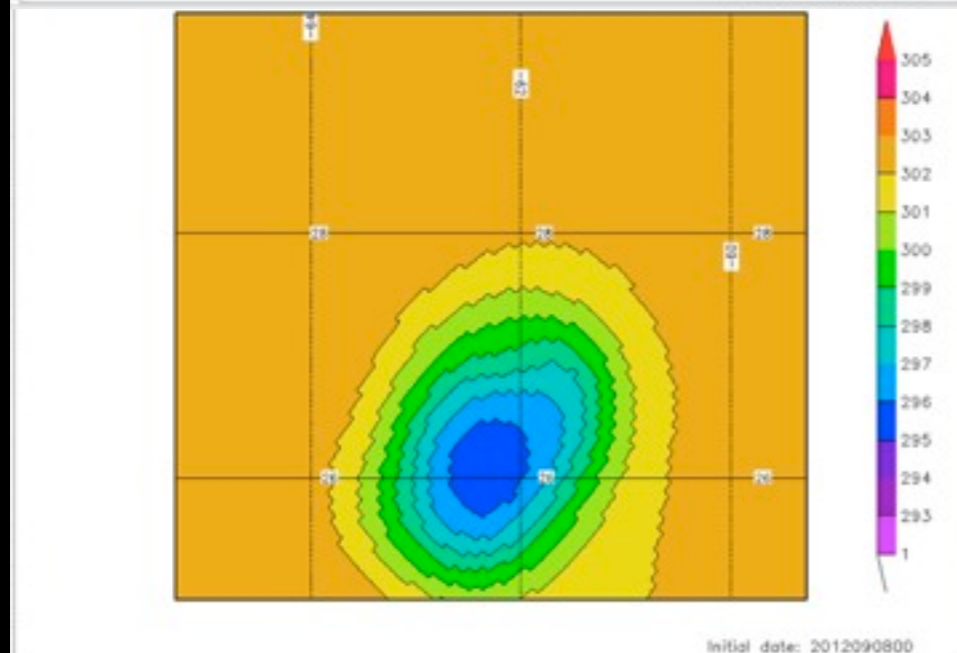
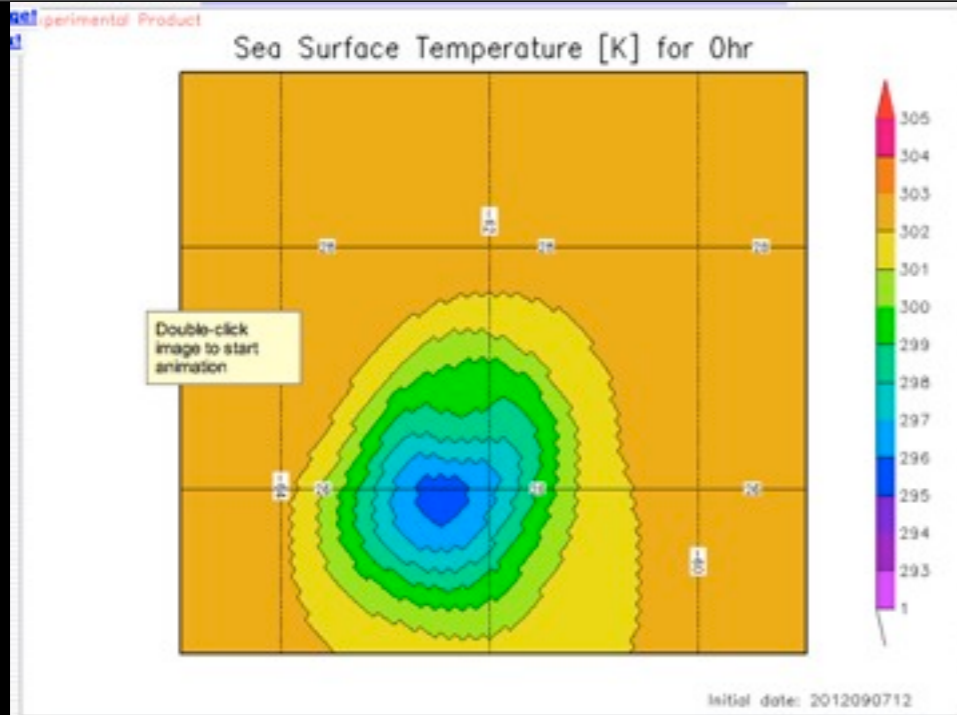


Forecasts: Beginning 2012090712 for HWRf model

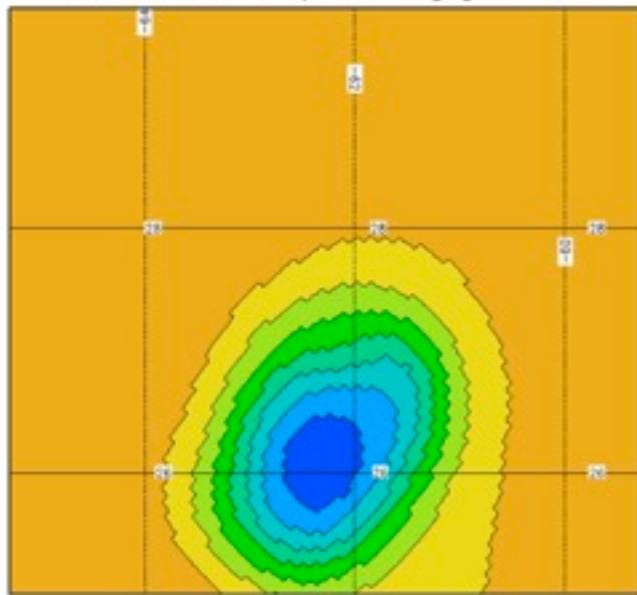
2012 Tropical Cyclone Tracks
Storm: AL1212 (LESLIE)



Forecasts: Beginning 2012090712 for HWEK model

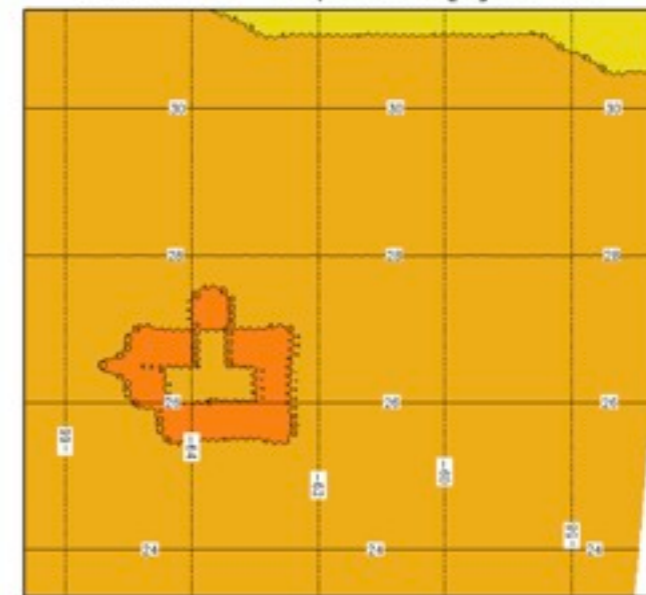


Sea Surface Temperature [K] for 0hr

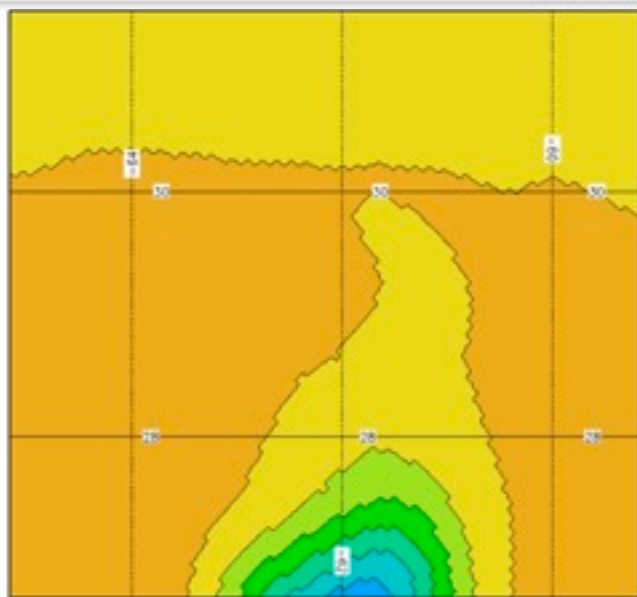


Initial date: 2012090800

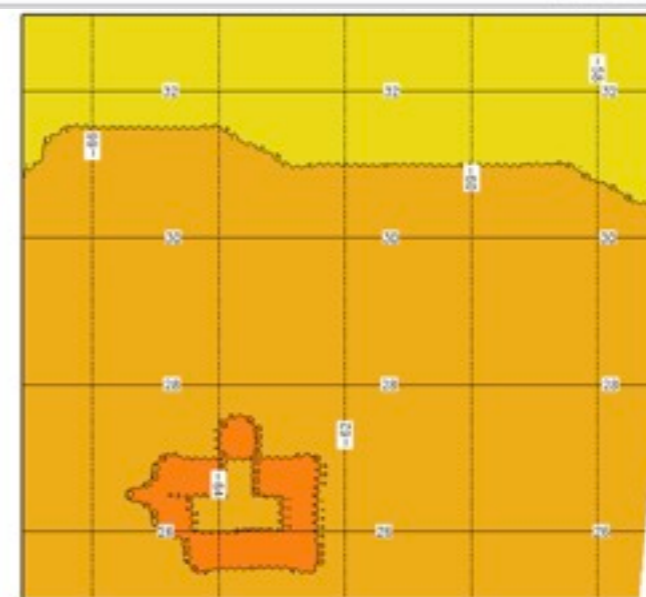
Sea Surface Temperature [K] for 0hr



Initial date: 2012090800



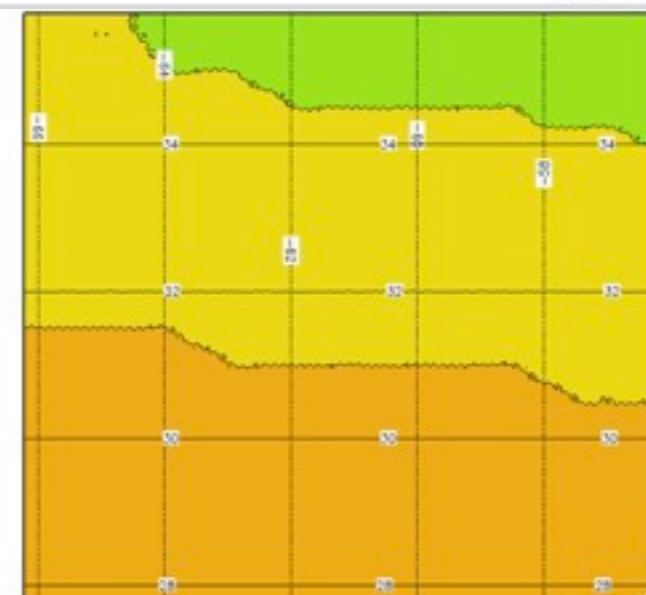
Initial date: 2012090800



Initial date: 2012090800

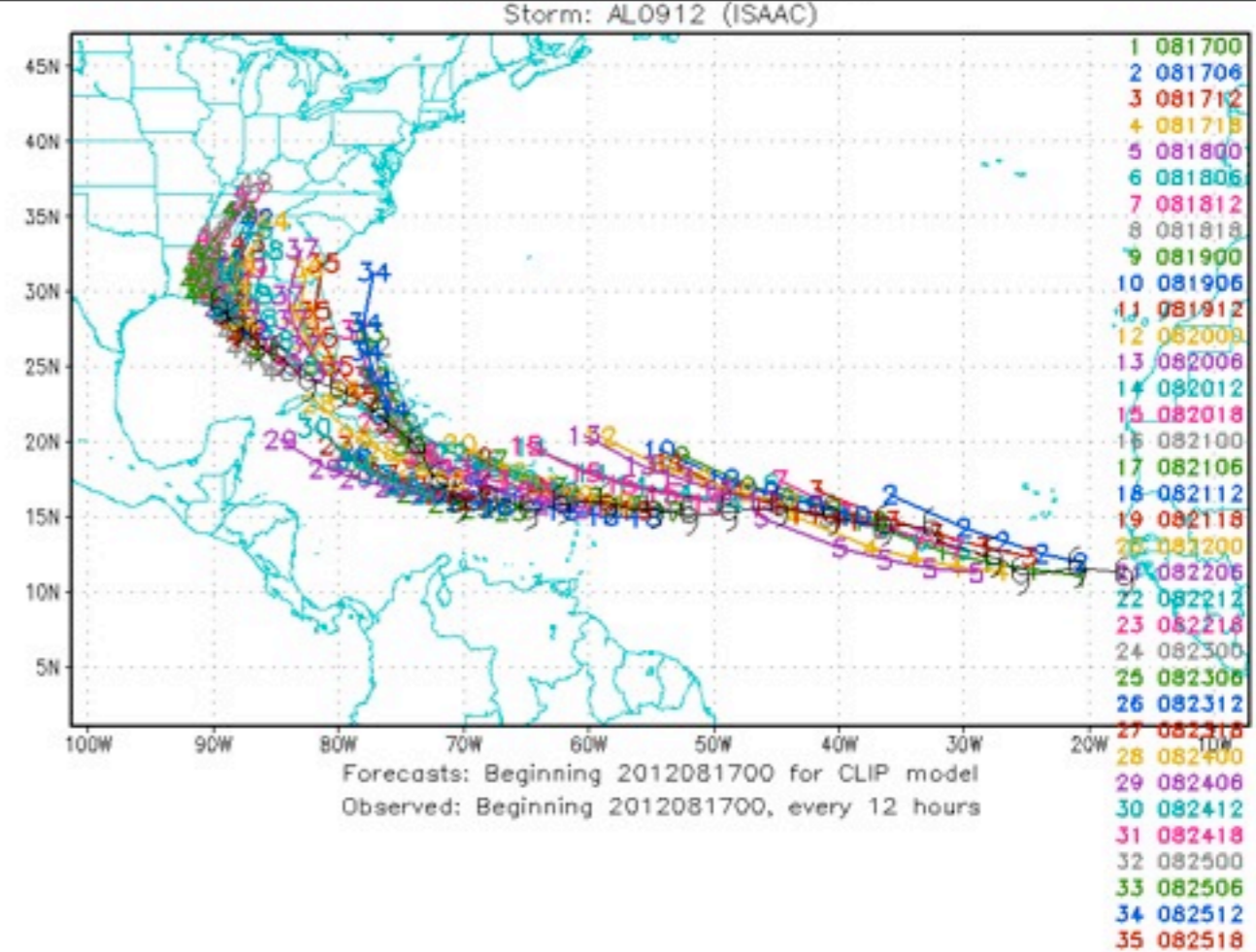
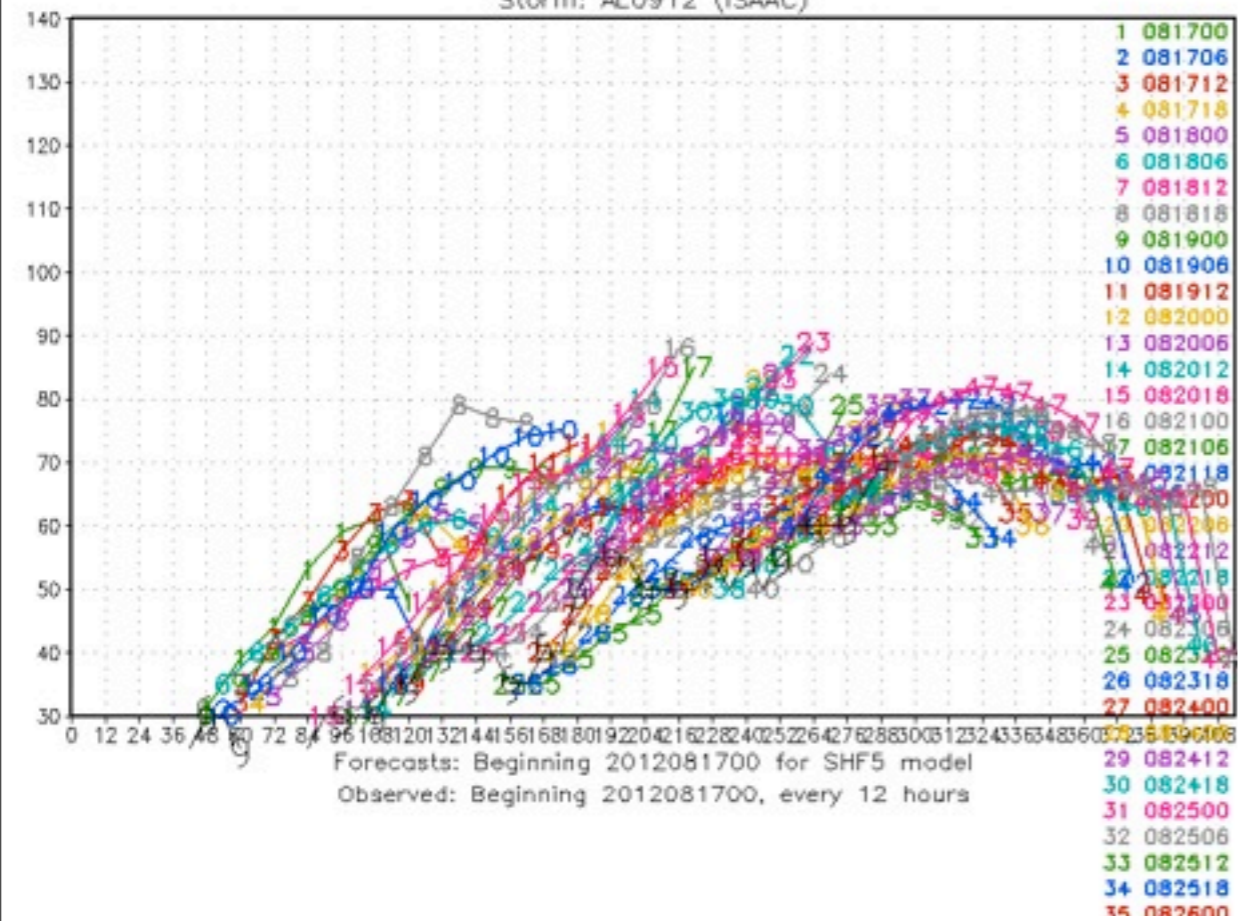


Initial date: 2012090800

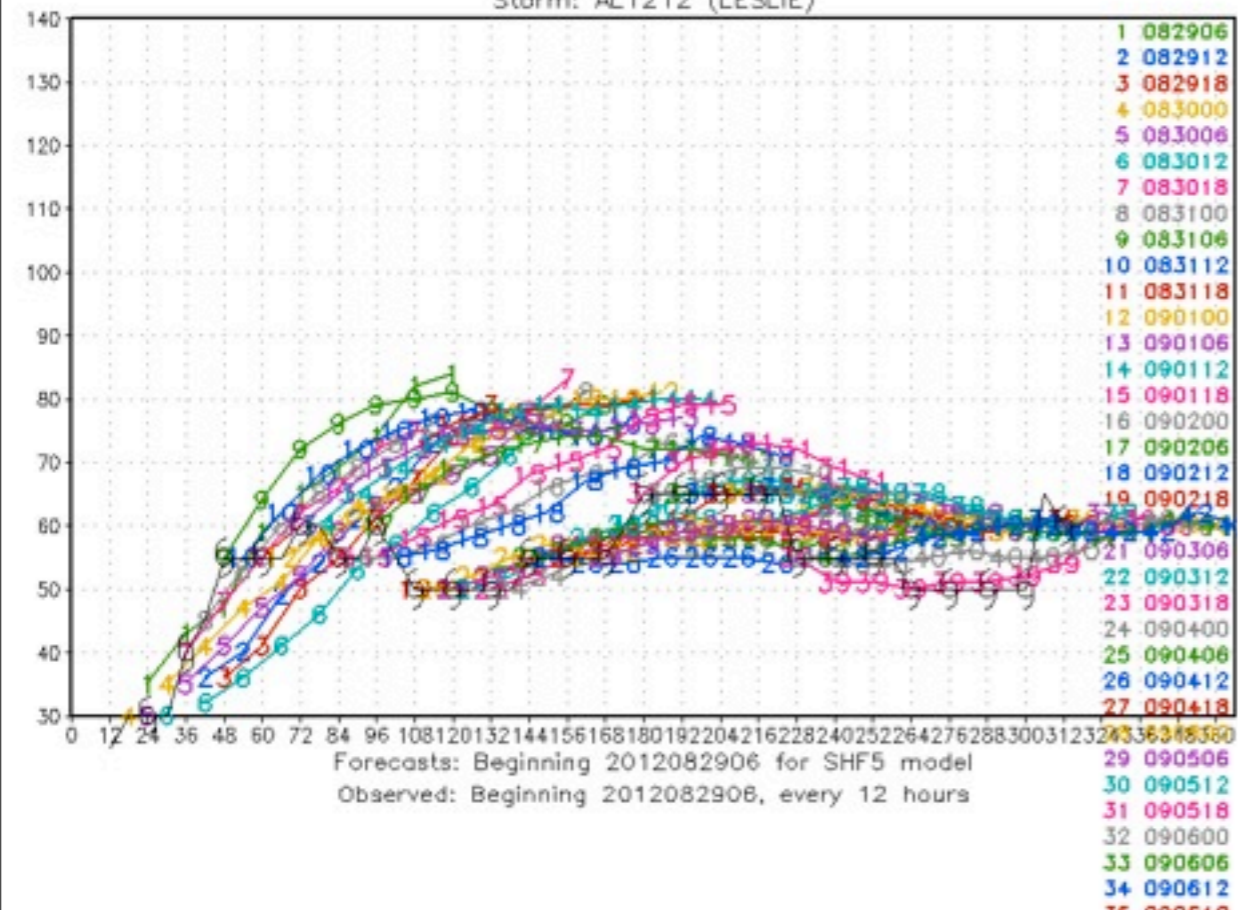


Initial date: 2012090800

2012 Tropical Cyclone Tracks
Storm: AL0912 (ISAAC)



2012 Tropical Cyclone Tracks
Storm: AL1212 (LESLIE)



Storm: AL1212 (LESLIE)

