

NOAA Aircraft Operations Center - NOAA 42 Flight Manifest

FLIGHT INFORMATION				CREW MANIFEST				MISSION INFORMATION				
FLT ID:	20170924H1	FLT #:		AC:	Kibbey	Scientists:		Pressure		Dropsondes		
From:	KLAL	ETD:	0500Z	CP(s):	Mitchell			A/C Takeoff	1006.0	Good	Bad	Sent
To:	KLAL	ETA:	1300Z		Ruckman					27	0	14
Block Time		Flight Time		Nav(s):	Urato			Wx Station Takeoff	1006.5	BTs		
In:	1309	In:	1303	FE(s):	Darby			A/C Land	1007.1	Good	Bad	Sent
Out:	0441	Out:	0448		Tuffnel			Wx Station Land	1008.2	0	0	0
Total:	8.5	Total:	8.3	FD(s):	Belson	Visitors:						
					Sears							
Sponsoring Org:	EMC/NHC			SEB:	T. Lynch			Storm Number ID:		AL152017		
Program:	PRX							(ie: AL072012)				
Purpose:	Hurricane TDR			SSA:	Richards			TCPOD/WSPOD Mission		NOAA2 1815A MARIA		
				AVAPS:	Patel			(ie: NOAA2 2418A SANDY)				
AS REQUIRED BY ORM				Y	N	REMARKS		Fix Number	Obs Number	Fix Time	SLP	
VOLCANIC ASH					X			1	6	0649	948	
SCIENCE MISSION WITHIN BDRY LAYER					X			2	17	0816	948	
LACK OF PRECIPITATION					X			3	20	0929	946	
RELATIVE HUMIDITY ≥ 80%				X				4	24	1050	948	
LARGE AIR-SEA TEMP GRADIENT					X							
HIGH SURFACE WINDS				X								
LONG FETCH / DURATION OF SFC WND					X							
SEA SALT ACCRETION FORECAST					X							
SEA SALT ACCRETION OBSERVED					X							
Additional Remarks:								*Highlighted items must be completed before departure.				
Cockpit Gmax: 1.3				Gmin: 0.6								

APPENDIX 1 – P3 QC Checklist

Flight ID:	20170924H1
Flight Director(s):	Belson/Sears

Pressure Comparison		
	T/O	Land
Aircraft	1006.0	1007.1
Tower	1006.5	1008.2

UWZ.d mean: 0.22

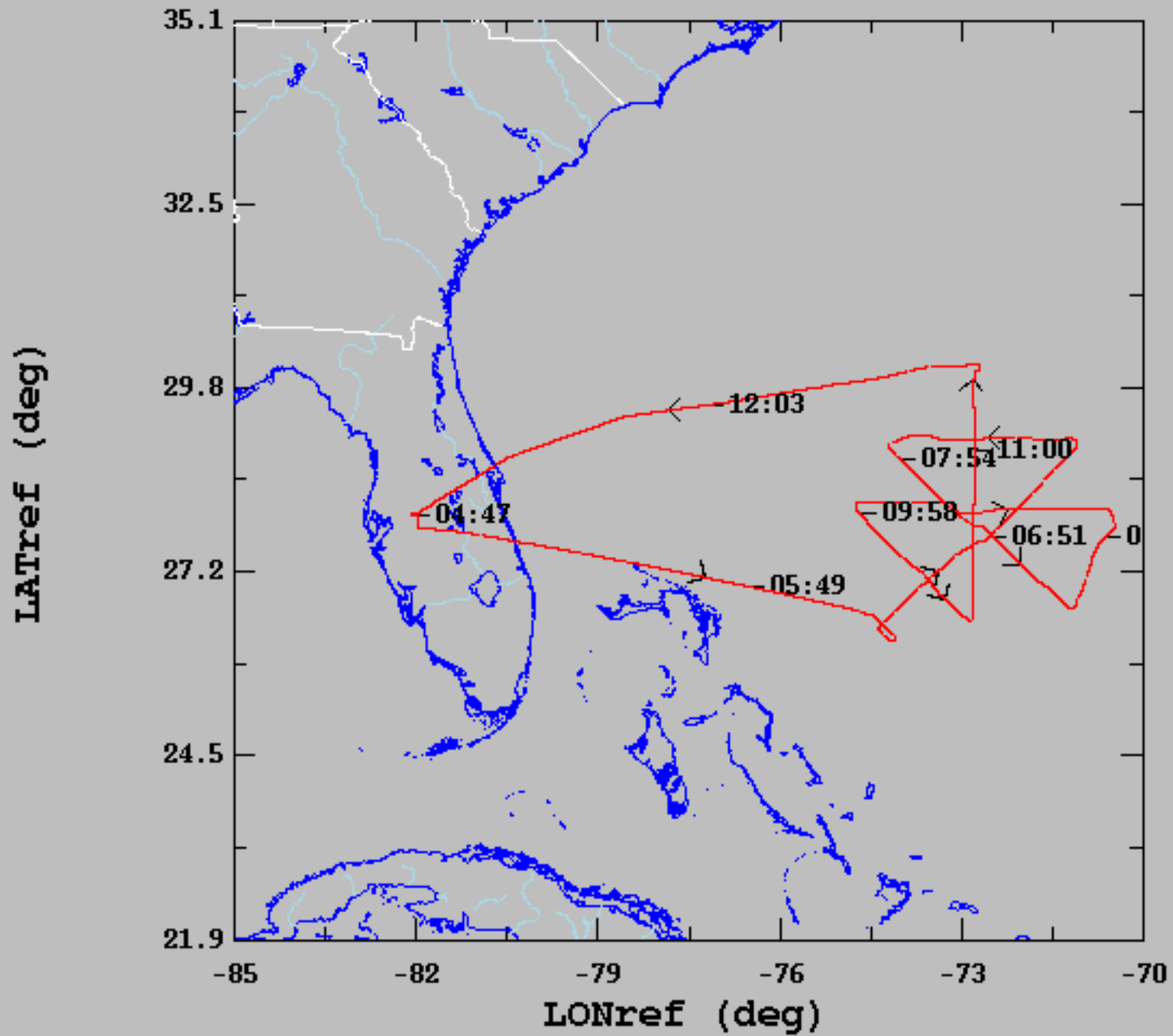
	Raw 1Hz Mean File Parameters				C File Parameters	
x Accelerometer	x AccAXI.1	x AccAYI.1	x AccAZI.1	x AccZfilter-GPS.1	x AccZref	
	x AccAXI.2	x AccAYI.2	x AccAZI.2	x Acc-Zfilter-GPS.2		
	x AccAXI-GPS.1	x AccAYI-GPS.1	x AccAZI-GPS.1			
	x AccAXI-GPS.2	x AccAYI-GPS.2	x AccAZI-GPS.2			
x Altitude	x AltGPS.1	x AltI-GPS.1	x AltPaADDU.1	x AltRA.1	x ALTref	x AltRA1.c
	x AltGPS.2	x AltI-GPS.2	x AltBCADDU.1	x AltRA.2	x ALTPA.d	x AltRA2.c
	x AltGPS.3				x ALTGA.d	
	x AltGPS.4					
x Ground Speed	x GsXI-GPS.1	x GsYI-GPS.1	x GsZI-GPS.1		x GSXref	
	x GsXI-GPS.2	x GsYI-GPS.2	x GsZI-GPS.2		x GSYref	
					x GSZref	
x Lat/Lon	x LatGPS.1	x Lati-GPS.1	x LonGPS.1	x Loni-GPS.1	x LATref	
	x LatGPS.2	x Lati-GPS.2	x LonGPS.2	x Loni-GPS.2	x LONref	
	x LatGPS.3		x LonGPS.3			
	x LatGPS.4		x LatGPS.4			
x Pressure	x PDALPHA.1	x PQALPHA.1	x PQM.1	x PSM.1	x PDALPHAref	x PQMref
	e PDALPHA.2	x PQBETA.1	x PQM.2	x PSM.2	x PDBETAref	x PQ.c
	x PDBETA.1		x PQM.3	e PTM.1	x PQALPHAref	x PSMref
	e PDBETA.2		x PQM.4		x PQBETAref	x PS.c
x Air Speed	x CasADDU.1	x TasADDU.1	x IasADDU.1		x IAS.d	x TAS.d
x Pitch/Roll	x PitchI.1	x PitchRateI.1	x RollI.1	x RollRateI.1	x PITCHref	
	x PitchI.2	x PitchRateI.2	x RollI.2	x RollRateI.2	x ROLLref	
	o PitchI.3	o PitchRateI.3	o RollI.3	o RollRateI.3		
x Temp/Dewpt	x TTM.1	x TDM.1	x TRadD.1		x TD.c	x TTMref
	x TTM.2	x TDM.2	x TRadS.1		x TDMref	x TA.d
	o TTM.3	e TDM.3	o TRadU.1			
x Miscellaneous (must check)					x UWZ.d	x WS.d
					x DPJ_WSZ	x WD.d
					x HUM	

FLID_Mission_Documents.pdf:

X	Error Summary
X	Crew Manifest
X	QC checklist
X	Dropwindsonde Log(s) – AVAPS and FD if completed
X	Flight Track
X	Miscellaneous FD notes

NOTES:

2017-09-24, 04:47:18-13:05:30



	mean	sigma	min	max
— LATref (deg), 1 s/sec	28.12	1.00	26.18	30.16
— LONref (deg), 1 s/sec	-74.78	3.19	-82.06	-70.46

20170924H1

KLAL - KLAL

11 AOC

T/O 0500Z

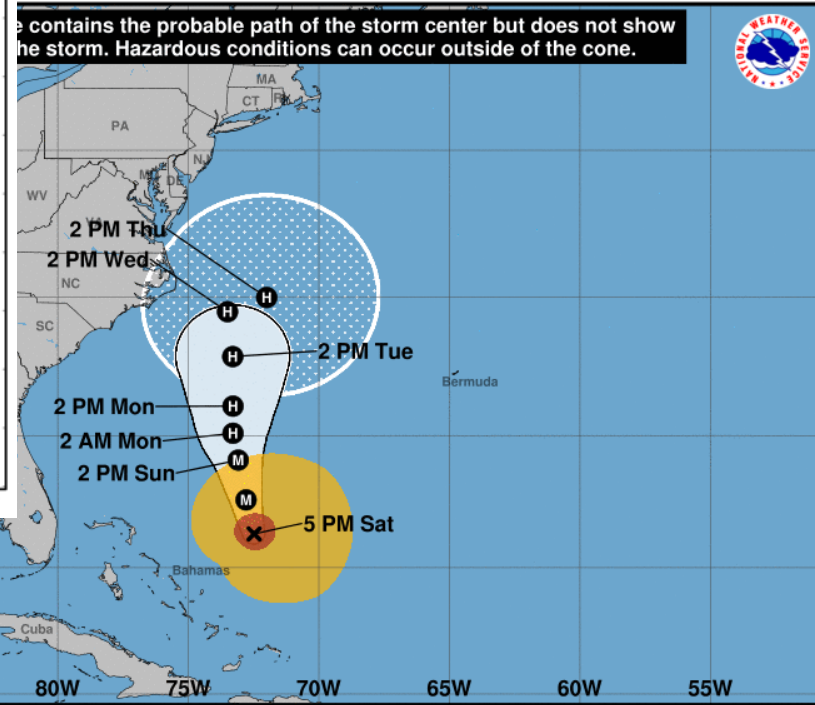
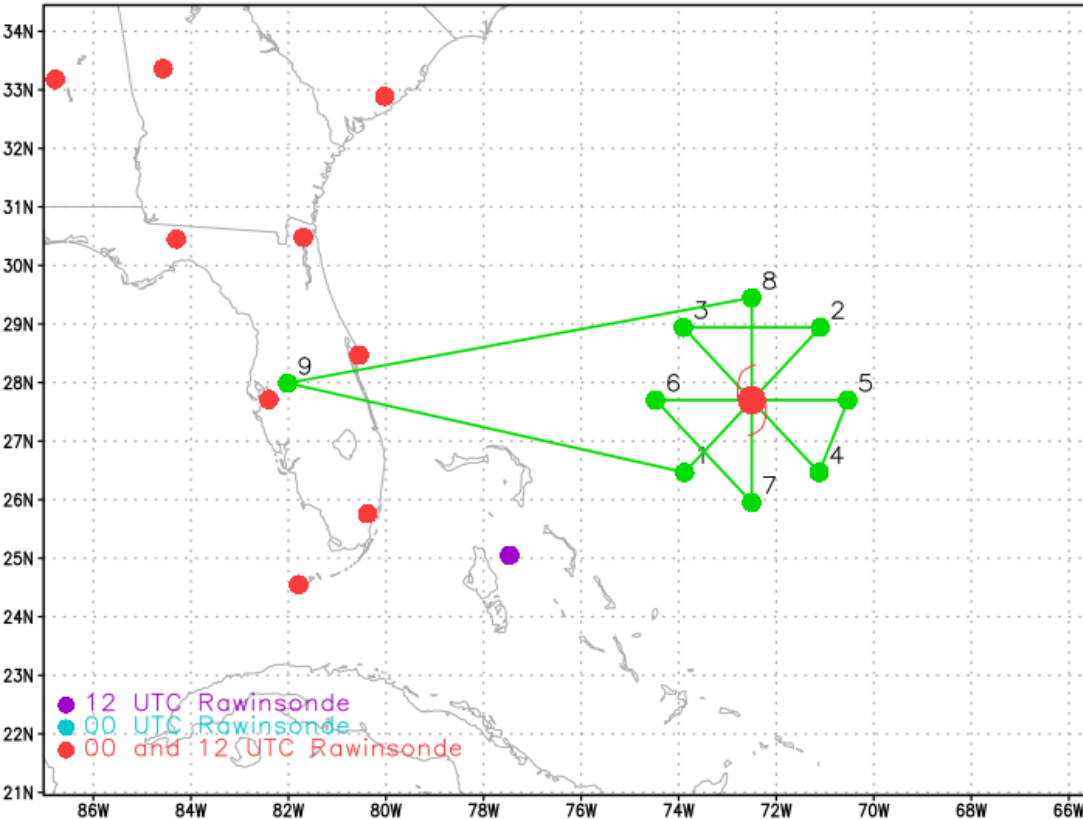
ETE 8+00

NOAA2 1815A MARIA

MISSION OVERVIEW

Tasking: EMC (8-10K' PA)

Expendables: 12 sondes (+ backups on center/eyewall drops)



Hurricane Maria
 Saturday September 23, 2017
 5 PM EDT Advisory 31
 NWS National Hurricane Center

Current information: x
 Center location 26.3 N 72.5 W
 Maximum sustained wind 115 mph
 Movement NNW at 9 mph

Forecast positions:
● Tropical Cyclone ○ Post/Potential TC
 Sustained winds: D < 39 mph
 S 39-73 mph H 74-110 mph M > 110 mph

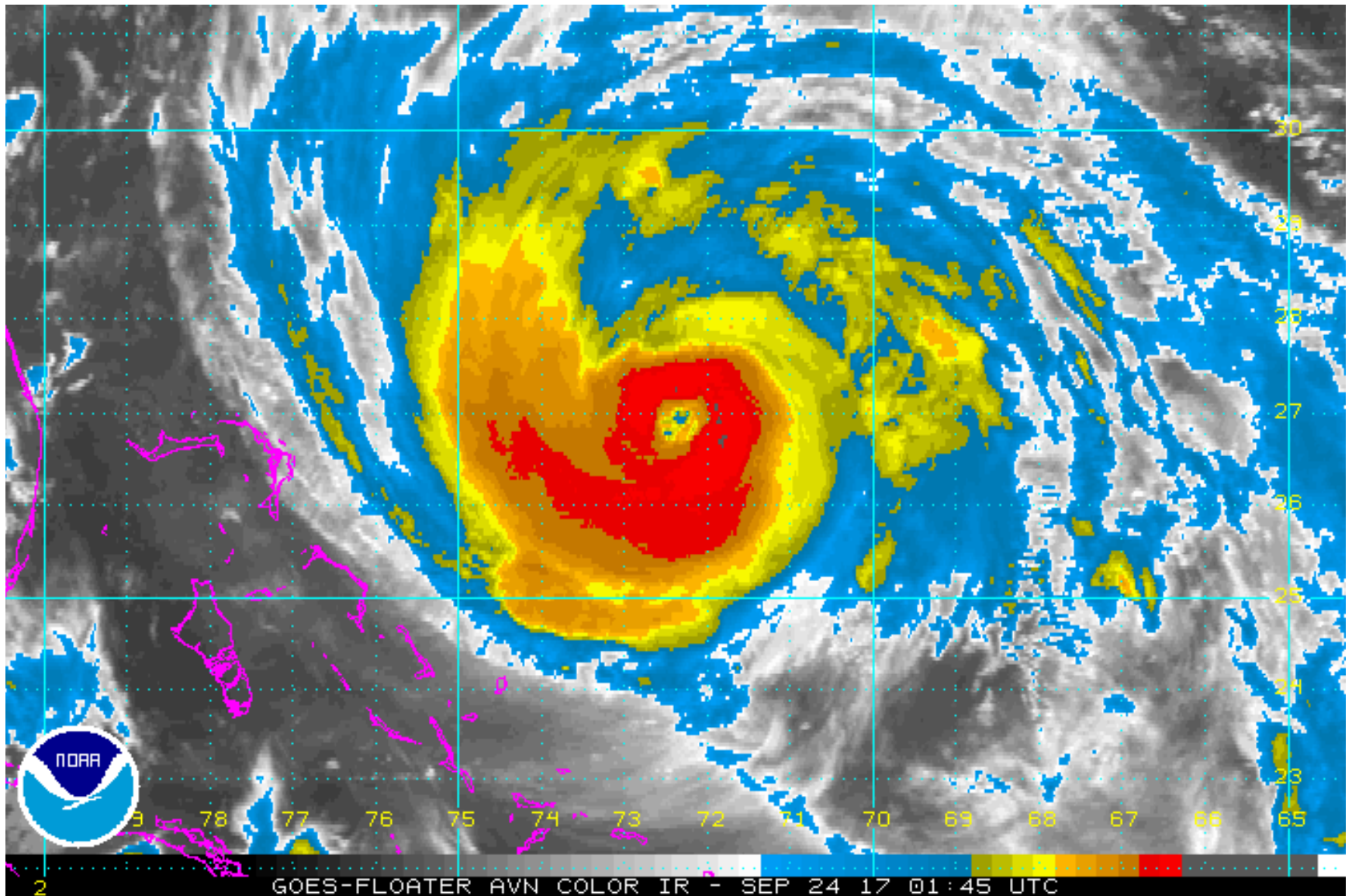
Potential track area: Day 1-3 (solid line), Day 4-5 (dotted line)

Watches: Hurricane (pink), Trop Stm (yellow)

Warnings: Hurricane (red), Trop Stm (blue)

Current wind extent: Hurricane (brown), Trop Stm (orange)

SATELLITE



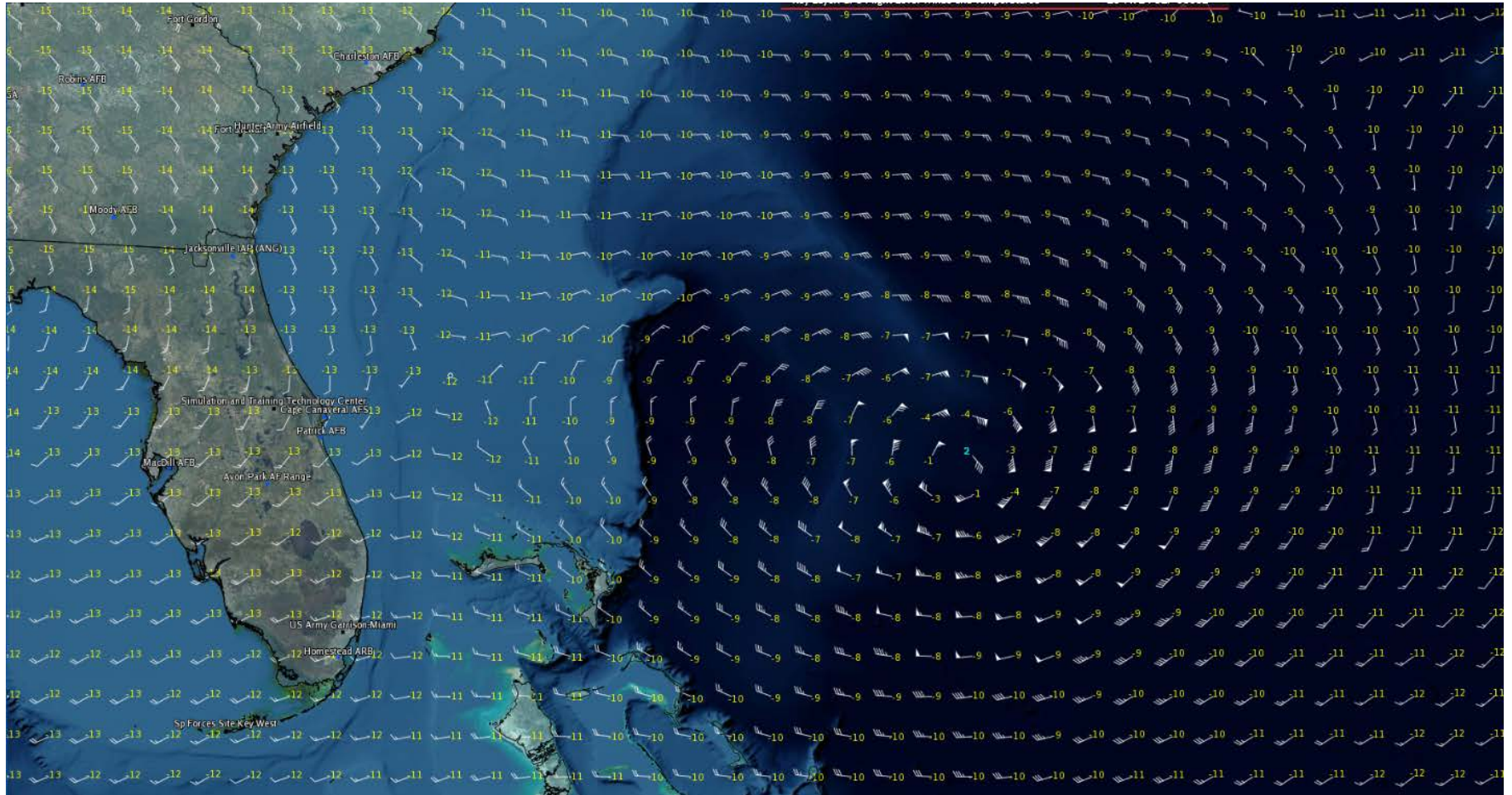
Other Aircraft

FLIGHT THREE -- TEAL 73

- A. 24/1130Z
- B. AFXXX 1915A MARIA
- C. 24/0900Z

Transit FL210

VT 24/09



Airfield Wx

- KLAL 240215Z AUTO 05004KT 10SM CLR 25/23 A2991 RMK AO2
- KLAL 232335Z 2400/2424 **08007KT P6SM SCT050 BKN070**
FM240200 VRB04KT P6SM SCT100 BKN250
FM241400 07010KT P6SM SCT030 BKN100
FM241700 06008KT P6SM VCTS SCT025CB BKN050 AMD NOT SKED 2402/2411

Hazards

- Icing – Negative
 - Freezing / Melting Altitude ~16,000'
- Turbulence – in convection
- Volcanic Ash - Negative
- HD - yes
- Rapid Intensification – No
- Sea Salt Accretion Forecast – Negative
 - Boundary Layer - No
 - Lack of Precip - No
 - RH > 80% - Yes
 - Large sea surface / air temperature gradient - No
 - High Surface Winds - Yes
 - Long fetch / duration - No