

NOAA Aircraft Operations Center - NOAA 42 Flight Manifest

FLIGHT INFORMATION				CREW MANIFEST				MISSION INFORMATION				
FLT ID:	20170818H1	FLT #:		AC:	Price	Scientists:		Pressure		Dropsondes		
From:	KLAL	ETD:	1600z	CP(s):	Rees			A/C Takeoff	1010.9	Good	Bad	Sent
To:	TISX	ETA:	2000z		Mitchell	Carrion				1	0	1
Block Time		Flight Time		Nav(s):	Gallagher	Newnam		Wx Station Takeoff	1011.7	BTs		
In:	0012	In:	0003		Urato	Kahn				Good	Bad	Sent
Out:	1758	Out:	1804	FE(s):	Darby	Rossi		A/C Land	1009.2			
Total:	62	Total:	6.0		Souza, Richard	Heystek				0	0	0
Sponsoring Org:		NHC		FD(s):	Belson	Sanchez		Wx Station Land	1012.0			
Program:		PRX			Parrish	Visitors:						
Purpose:		Transit		SEB:	Richards	Kregelka		Storm Number ID:				
					Peek			(ie: AL072012)				
				SSA:	Mascaro			T CPOD/WSPOD Mission				
				AVAPS:	Sans Souci			(ie: NOAA2 2418A SANDY)		NOAA2 WXWXA TRAIN		
								OBSERVATIONS				
AS REQUIRED BY ORM			Y	N	REMARKS			Fix Number	Obs Number	Fix Time	SLP	
VOLCANIC ASH				X								
SCIENCE MISSION WITHIN BDRY LAYER				X								
LACK OF PRECIPITATION				X								
RELATIVE HUMIDITY ≥ 80%				X								
LARGE AIR-SEA TEMP GRADIENT				X								
HIGH SURFACE WINDS				X								
LONG FETCH / DURATION OF SFC WND				X								
SEA SALT ACCRETION FORECAST				X								
SEA SALT ACCRETION OBSERVED				X								

Additional Remarks:

*Highlighted items must be completed before departure.

Cockpit Gmax: **No**

Gmin:

APPENDIX 1 – P3 QC Checklist

Flight ID:	20170818H1
Flight Director(s):	Parrish, Belson

Pressure Comparison		
	T/O	Land
Aircraft	1010.9	1009.2
Tower	1011.7	1012.0

UWZ.d mean: 0.13

	Raw 1Hz Mean File Parameters				C File Parameters	
x Accelerometer	x AccAXI.1	x AccAYI.1	x AccAZI.1	x AccZfilter-GPS.1	x AccZref	
	x AccAXI.2	x AccAYI.2	x AccAZI.2	x Acc-Zfilter-GPS.2		
	x AccAXI-GPS.1	x AccAYI-GPS.1	x AccAZI-GPS.1			
	x AccAXI-GPS.2	x AccAYI-GPS.2	x AccAZI-GPS.2			
x Altitude	x AltGPS.1	x AltI-GPS.1	x AltPaADDU.1	x AltRA.1	x ALTref	x AltRA1.c
	x AltGPS.2	x AltI-GPS.2	x AltBCADDU.1	x AltRA.2	x ALTPA.d	x AltRA2.c
	x AltGPS.3				x ALTGA.d	
	x AltGPS.4					
x Ground Speed	x GsXI-GPS.1	x GsYI-GPS.1	x GsZI-GPS.1		x GSXref	
	x GsXI-GPS.2	x GsYI-GPS.2	x GsZI-GPS.2		x GSYref	
					x GSZref	
x Lat/Lon	x LatGPS.1	x Lati-GPS.1	x LonGPS.1	x Loni-GPS.1	LATref	
	x LatGPS.2	x Lati-GPS.2	x LonGPS.2	x Loni-GPS.2	LONref	
	x LatGPS.3		x LonGPS.3			
	x LatGPS.4		x LatGPS.4			
x Pressure	x PDALPHA.1	x PQALPHA.1	e PQM.1	x PSM.1	x PDALPHAref	x PQMref
	e PDALPHA.2	x PQBETA.1	x PQM.2	x PSM.2	x PDBETAref	x PQ.c
	x PDBETA.1		x PQM.3	x PTM.1	x PQALPHAref	x PSMref
	x PDBETA.2		x PQM.4		x PQBETAref	x PS.c
x Air Speed	x CasADDU.1	x TasADDU.1	x lasADDU.1		x IAS.d	x TAS.d
x Pitch/Roll	x PitchI.1	x PitchRateI.1	x RollI.1	x RollRateI.1	x PITCHref	
	x PitchI.2	x PitchRateI.2	x RollI.2	x RollRateI.2	x ROLLref	
	o PitchI.3	o PitchRateI.3	o RollI.3	o RollRateI.3		
x Temp/Dewpt	x TTM.1	x TDM.1	x TRadD.1		x TD.c	x TTMref
	x TTM.2	x TDM.2	x TRadS.1		x TDMref	x TA.d
	o TTM.3	e TDM.3	o TRadU.1			
x Miscellaneous (must check)					x UWZ.d	x WS.d
					x DPJ_WSZ	x WD.d
					x HUM	

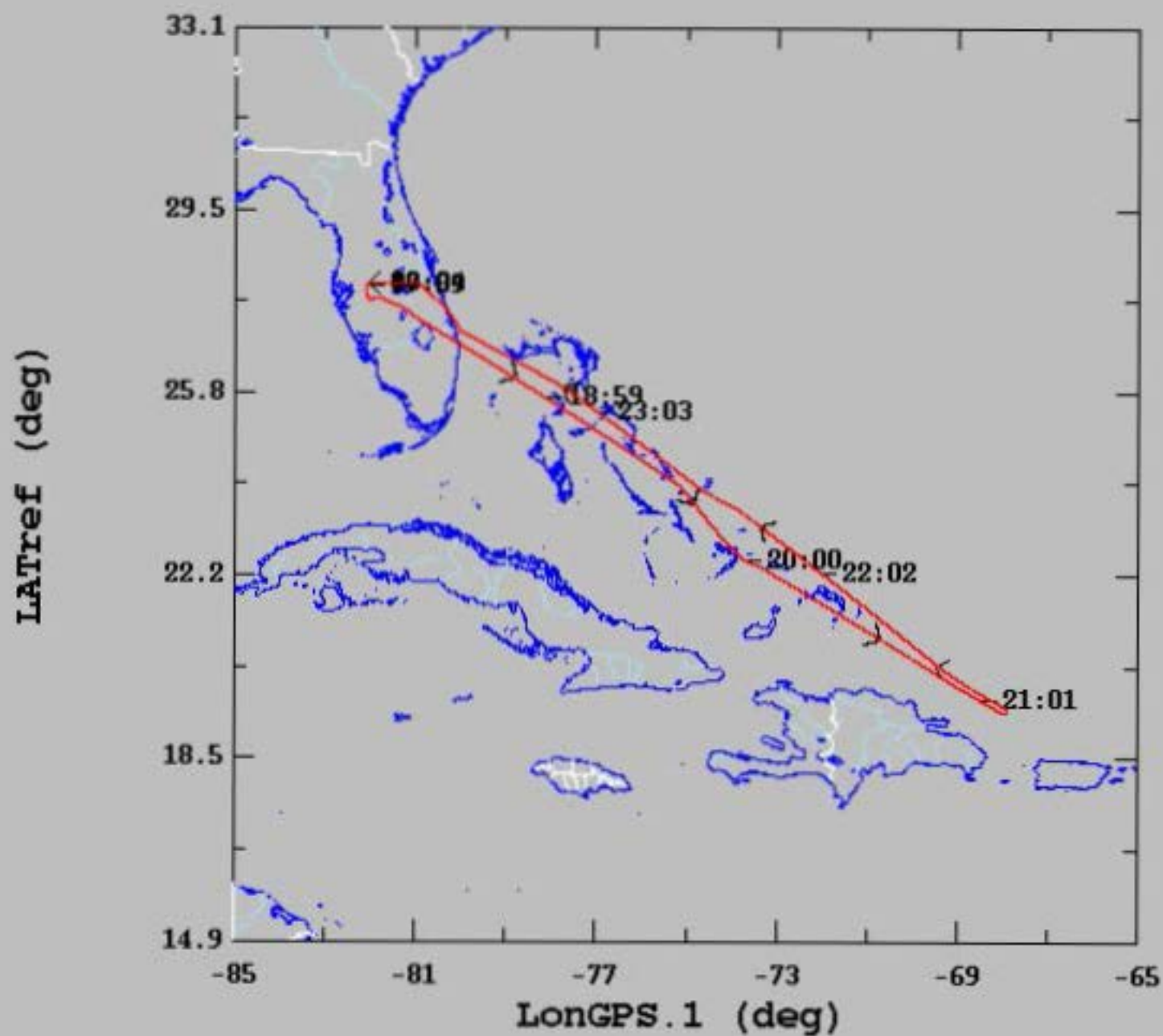
FLID_Mission Documents.pdf:

X	Error Summary
X	Crew Manifest
X	QC checklist
X	Dropwindsonde Log(s) – AVAPS and FD if completed
X	Flight Track
X	Miscellaneous FD notes

NOTES:

PSM.1/2 has consistent 2mb diff, PTM.1 is about 80mb high, PDALPHA.2 has saw pattern, PQM.1 not consistent with other 3 sensors. TDM.3 has a 10C high bias.

2017-08-18, 17:59:00-24:04:00



	mean	sigma	min	max
— LATref (deg), 1 s/sec	23.98	2.64	19.42	28.03
— LongGPS.1 (deg), 1 s/sec	-75.19	4.21	-82.08	-67.88

20170818H1

KLAL - TISX

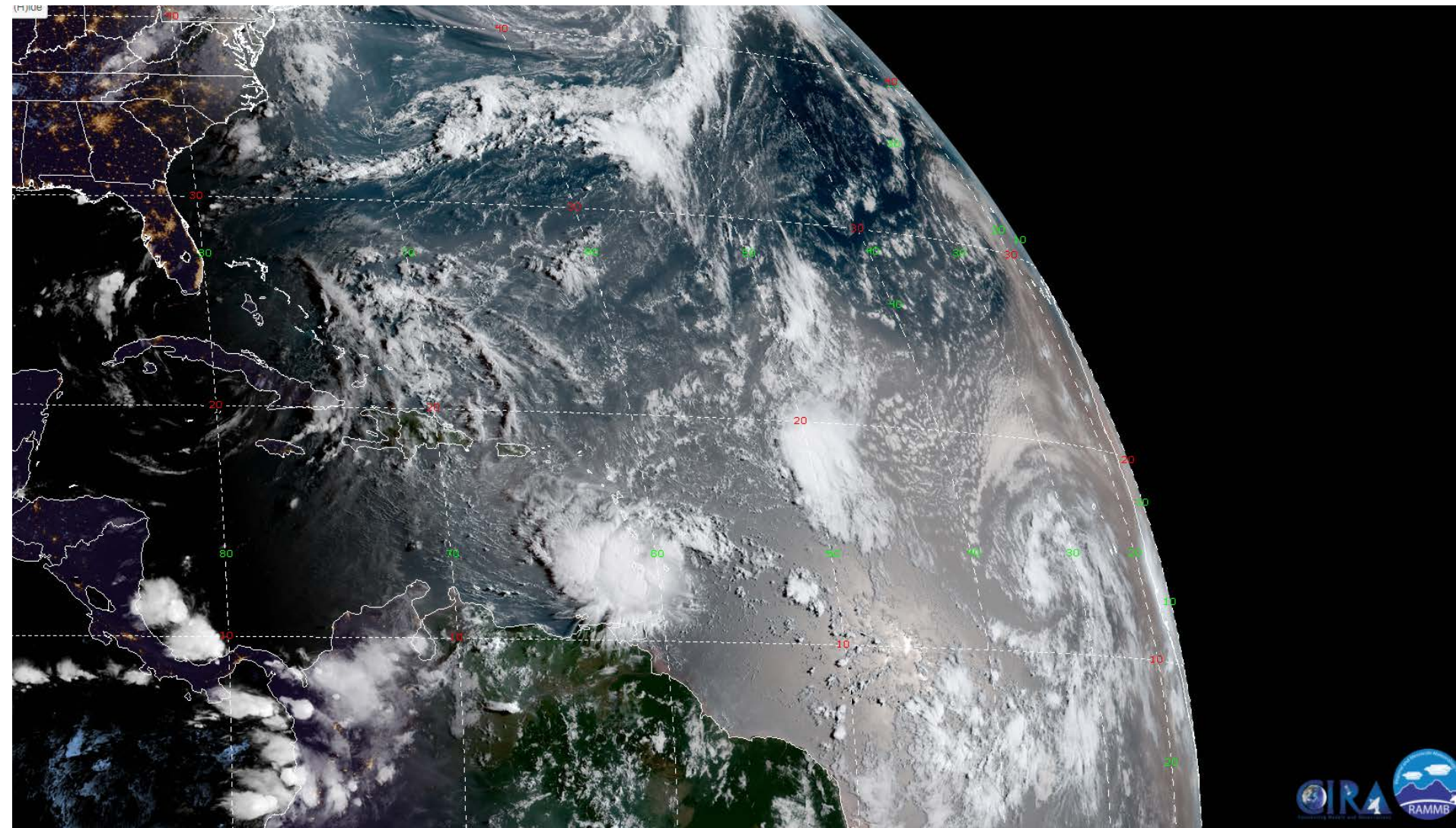
AOC

T/O 1600Z

ETE 4+00

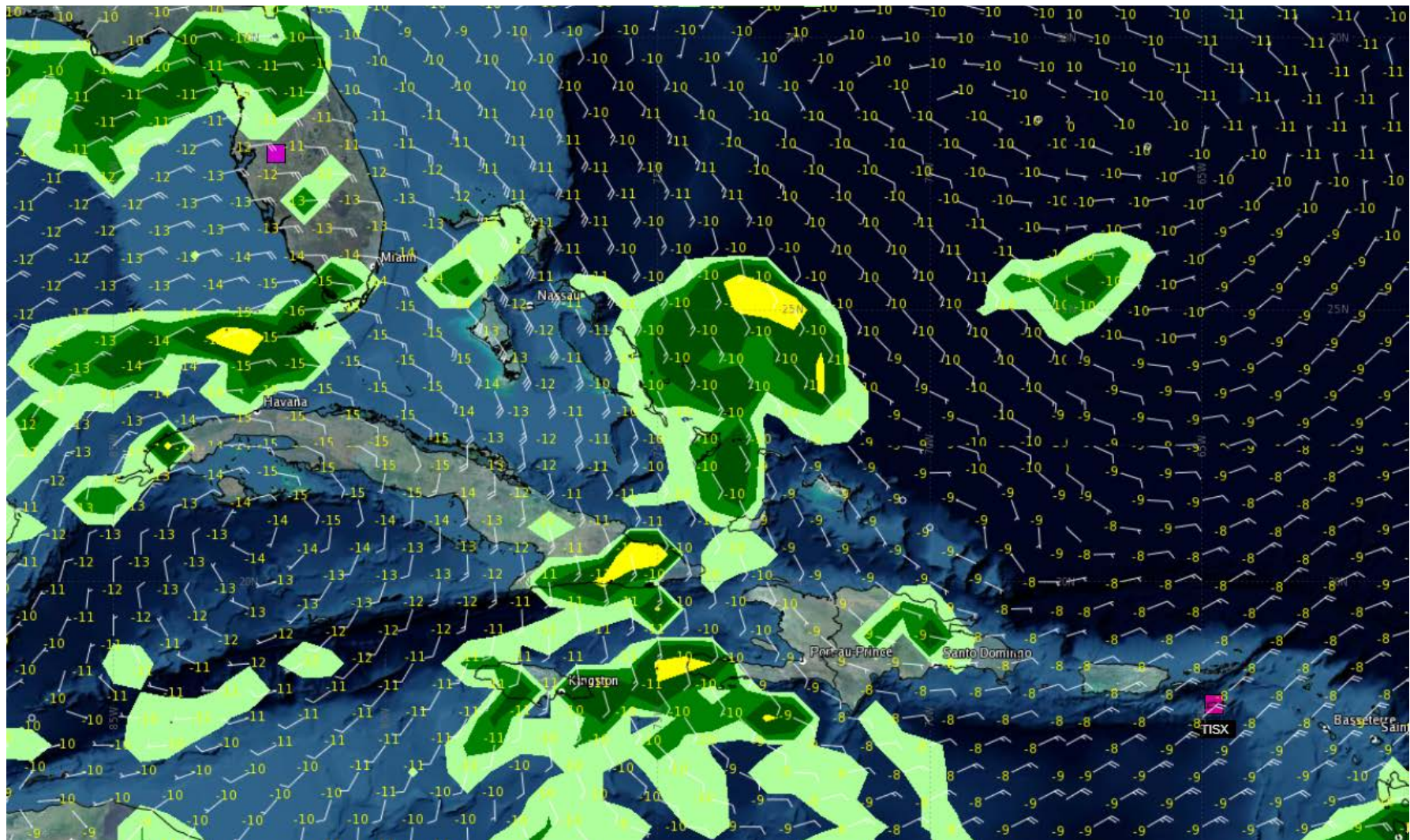
NOAA2 WXWXA TRAIN

Transit



Transit FL210

VT 18/18Z



Hazards

- Icing – Light Rime above 18,000ft N of Hispanola
 - Freezing / Melting Altitude 15,000 ft
- Turbulence – in convection
- Volcanic Ash - Negative
- HD - no
- Rapid Intensification – N/A
- Sea Salt Accretion Forecast – Negative
 - Boundary Layer - No
 - Lack of Precip - No
 - RH > 80% - No
 - Large sea surface / air temperature gradient - No
 - High Surface Winds - No
 - Long fetch / duration - No

Airfield Wx

- KLAL 181150Z 00000KT 7SM SKC 24/24 A3004
- KLAL 181130Z 1812/1912 00000KT P6SM FEW025 SCT250
FM181400 22004KT P6SM SCT025
FM181800 26007KT P6SM VCTS BKN045CB
TEMPO 1818/1821 VRB15G25KT 3SM TSRA BKN025CB
FM182100 27009KT P6SM VCTS BKN050CB BKN100
FM190200 VRB03KT P6SM VCSH FEW040 SCT100 BKN250
FM190600 00000KT P6SM FEW100 SCT250
- TISX 181153Z 06015KT 10SM SCT026 29/24 A2994 RMK AO2 SLP137 T02940244 10294 20267 51010
- TISX 181120Z 1812/1912 06008KT P6SM SCT035
FM181300 08015G25KT P6SM FEW030 SCT060
FM182300 06010KT P6SM FEW025