

NOAA Aircraft Operations Center - NOAA 42 Flight Manifest

FLIGHT INFORMATION				CREW MANIFEST				MISSION INFORMATION					
FLT ID:	20170808H1	FLT #:		AC:	Price	Scientists:		Pressure		Dropsondes			
From:	KLAL	ETD:	2200z	CP(s):	Mitchell	Zawislak, Jon		A/C Takeoff	1009.5	Good	Bad	Sent	
To:	KLAL	ETA:	0430z		Ruckman			1	6	7			
Block Time		Flight Time		Nav(s):	Gallagher	Sellwood, Kate		Wx Station Takeoff	1009.7	BTs			
In:	0444	In:	0437		Urato	Zhang, Jun		A/C Land	1014.6	Good	Bad	Sent	
Out:	2152	Out:	2200	FE(s)	Souza			Wx Station Land	1013.5	2	2	2	
Total:	6.9	Total:	6.6	FD(s):	Parrish	Visitors:		Storm Number ID:		AL072017			
Sponsoring Org:		HRD		SEB:	Mascaro			(ie: AL072012)					
Program:		PRX		SSA:	Peek	TCPOD/WSPOD Mission		NOAA2 2418A SANDY		NOAA2 0207A FRANKLIN			
Purpose:		TDR			AVAPS:	McAlister			OBSERVATIONS				
AS REQUIRED BY ORM				Y	N	REMARKS				Fix Number	Obs Number	Fix Time	SLP
VOLCANIC ASH					x					1	8	0029	N/A
SCIENCE MISSION WITHIN BDRY LAYER					X								
LACK OF PRECIPITATION					X								
RELATIVE HUMIDITY ≥ 80%				X									
LARGE AIR-SEA TEMP GRADIENT					X								
HIGH SURFACE WINDS				X									
LONG FETCH / DURATION OF SFC WND					X								
SEA SALT ACCRETION FORECAST					X								
SEA SALT ACCRETION OBSERVED					X								
Additional Remarks:				*Highlighted items must be completed before departure.									
Cockpit Gmax: 1.5				Gmin: 1.0									
Gmax and Gmin are suspect. Experienced moderate turbulence during last "eyewall" penetration around 02Z.													

APPENDIX 1 – P3 QC Checklist

Flight ID:	20170808H1
Flight Director(s):	Parrish, Belson

Pressure Comparison		
	T/O	Land
Aircraft	1009.5	1014.6
Tower	1009.7	1013.5

UWZ.d mean: 0.19

	Raw 1Hz Mean File Parameters				C File Parameters	
x Accelerometer	x AccAXI.1	x AccAYI.1	x AccAZI.1	x AccZfilter-GPS.1	x AccZref	
	x AccAXI.2	x AccAYI.2	x AccAZI.2	x Acc-Zfilter-GPS.2		
	x AccAXI-GPS.1	x AccAYI-GPS.1	x AccAZI-GPS.1			
	x AccAXI-GPS.2	x AccAYI-GPS.2	x AccAZI-GPS.2			
x Altitude	x AltGPS.1	x AltI-GPS.1	x AltPaADDU.1	x AltRA.1	x ALTref	x AltRA1.c
	x AltGPS.2	x AltI-GPS.2	x AltBCADDU.1	x AltRA.2	x ALTPA.d	x AltRA2.c
	x AltGPS.3				x ALTGA.d	
	x AltGPS.4					
x Ground Speed	x GsXI-GPS.1	x GsYI-GPS.1	x GsZI-GPS.1		x GSXref	
	x GsXI-GPS.2	x GsYI-GPS.2	x GsZI-GPS.2		x GSYref	
					x GSZref	
x Lat/Lon	x LatGPS.1	x Lati-GPS.1	x LonGPS.1	x Loni-GPS.1	x LATref	
	x LatGPS.2	x Lati-GPS.2	x LonGPS.2	x Loni-GPS.2	x LONref	
	x LatGPS.3		x LonGPS.3			
	x LatGPS.4		x LatGPS.4			
x Pressure	x PDALPHA.1	x PQALPHA.1	x PQM.1	x PSM.1	x PDALPHAref	x PQMref
	x PDALPHA.2	x PQBETA.1	x PQM.2	x PSM.2	x PDBETAref	x PQ.c
	x PDBETA.1		x PQM.3	x PTM.1	x PQALPHAref	x PSMref
	x PDBETA.2		x PQM.4		x PQBETAref	x PS.c
x Air Speed	x CasADDU.1	x TasADDU.1	lasADDU.1		x IAS.d	x TAS.d
x Pitch/Roll	x PitchI.1	x PitchRateI.1	x RollI.1	x RollRateI.1	x PITCHref	
	x PitchI.2	x PitchRateI.2	x RollI.2	x RollRateI.2	x ROLLref	
	o PitchI.3	o PitchRateI.3	o RollI.3	o RollRateI.3		
x Temp/Dewpt	x TTM.1	x TDM.1	x TRadD.1		x TD.c	x TTMref
	x TTM.2	x TDM.2	x TRadS.1		x TDMref	x TA.d
	o TTM.3	x TDM.3	o TRadU.1			
x Miscellaneous (must check)					x UWZ.d	x WS.d
					x DPJ_WSZ	x WD.d
					x HUM	

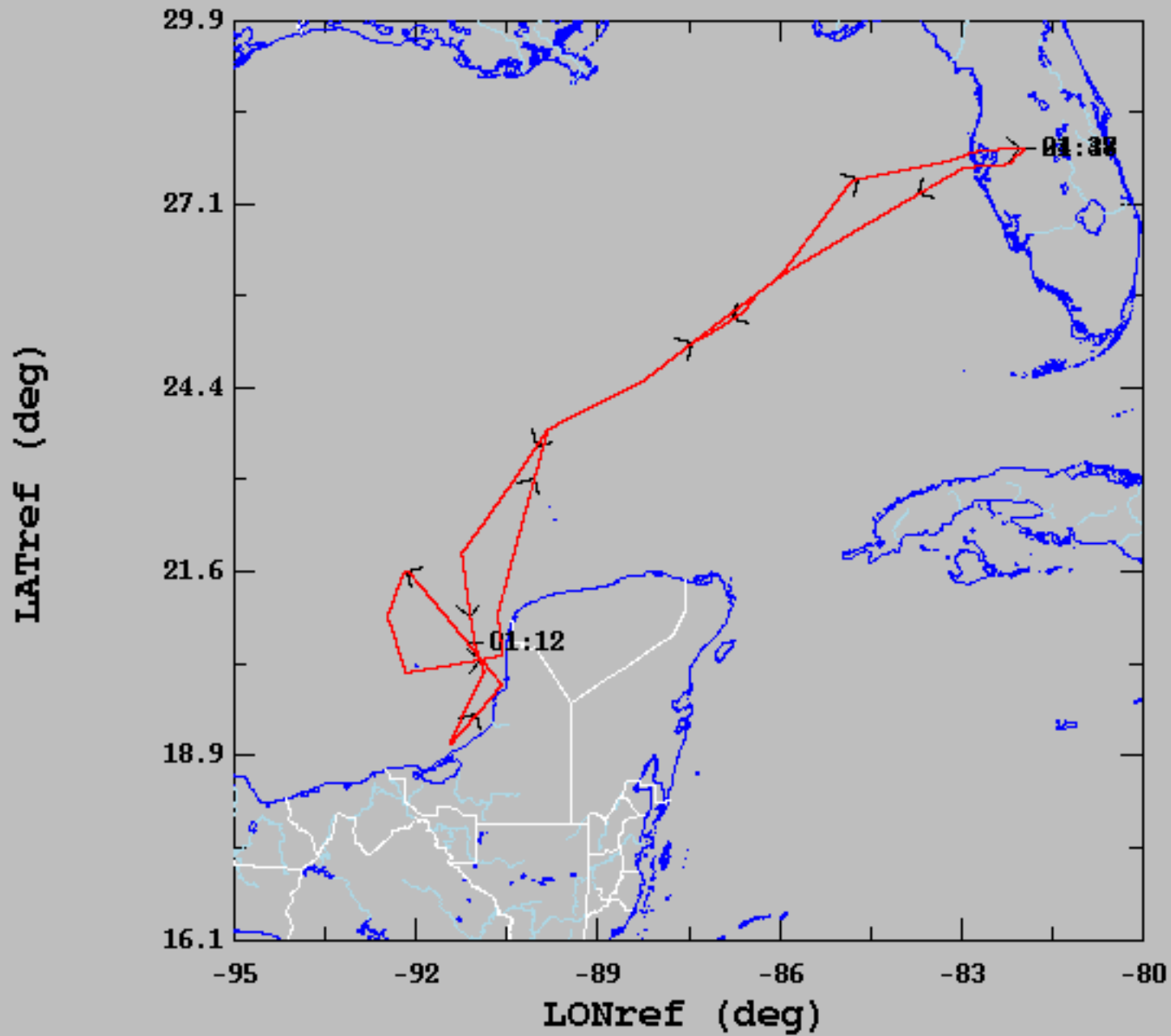
FLID_Mission Documents.pdf:

X	Error Summary
X	Crew Manifest
X	QC checklist
X	Dropwindsonde Log(s) – AVAPS and FD if completed
X	Flight Track
X	Miscellaneous FD notes

NOTES:

TDM.3 has a 6C high bias.

2017-08-08, 21:47:00-28:38:30



	mean	sigma	min	max
— LATref (deg), 1 s/sec	23.77	2.92	19.04	27.99
— LONref (deg), 1 s/sec	-88.16	3.31	-92.45	-81.96

20170808H1

KLAL - KLAL

12 AOC

3 HRD

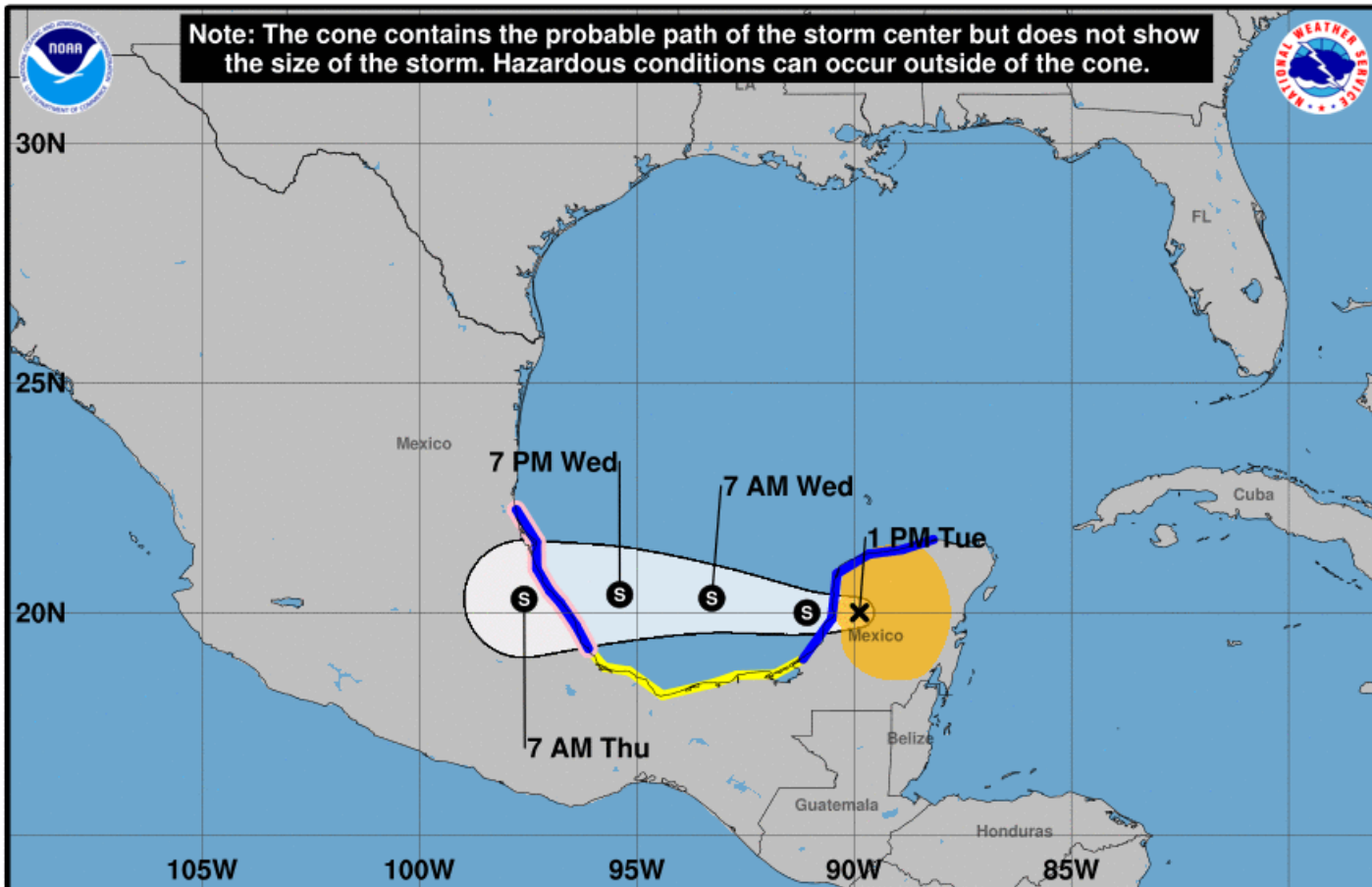
1 LAL

T/O 2200Z

ETE 6+30

NOAA2 0207A FRANKLIN

STORM FORECAST



Note: The cone contains the probable path of the storm center but does not show the size of the storm. Hazardous conditions can occur outside of the cone.

Tropical Storm Franklin

Tuesday August 08, 2017
 1 PM CDT Intermediate Advisory 8A
 NWS National Hurricane Center

Current information: X

Center location 20.0 N 89.9 W
 Maximum sustained wind 40 mph
 Movement WNW at 12 mph

Forecast positions:

● Tropical Cyclone ○ Post/Potential TC
 Sustained winds: D < 39 mph
 S 39-73 mph H 74-110 mph M > 110 mph

Potential track area:

Day 1-3 Day 4-5

Watches:

Hurricane Trop Stm

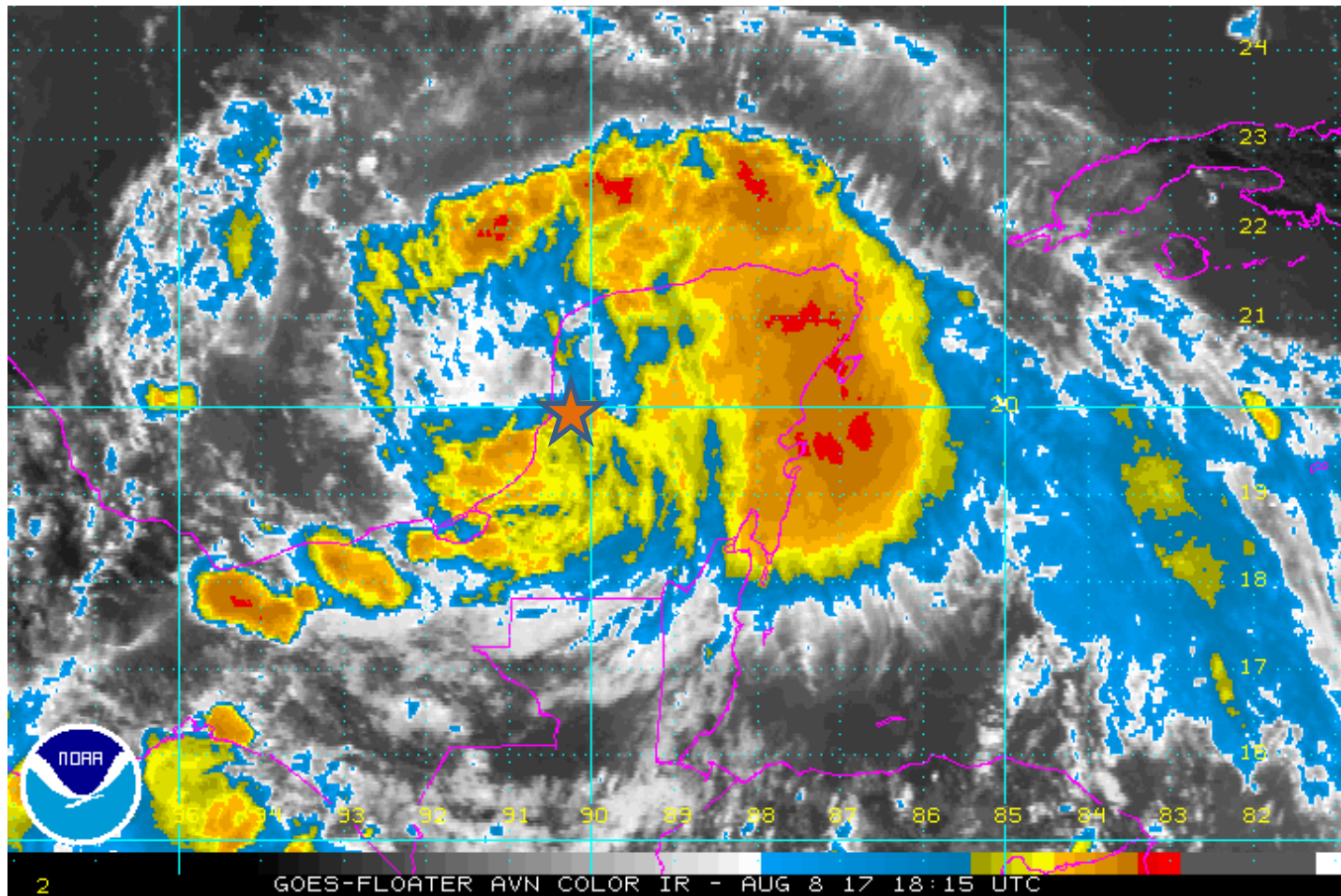
Warnings:

Hurricane Trop Stm

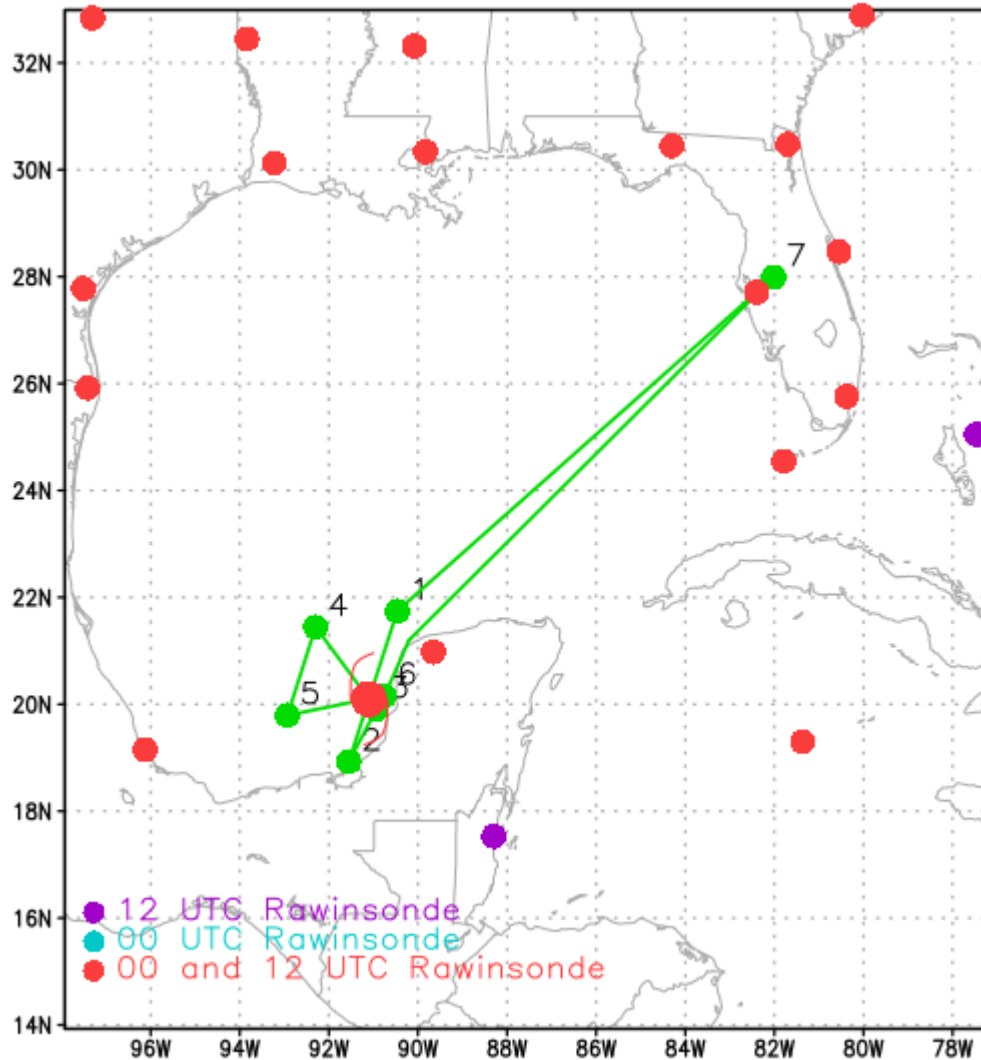
Current wind extent:

Hurricane Trop Stm

SATELLITE



Mission



- Sondes/BTs on endpoints (HFIP) – no backups, sonde in center (NHC) – backups
- 105nm legs, FL100

Other Aircraft

- FLIGHT TWO -- TEAL 73
- A. 08/2330Z, 09/0530Z
- B. AFXXX 0307A FRANKLIN
- C. 08/2100Z
- D. 20.1N 91.1W
- E. 08/2300Z TO 09/0530Z
- F. SFC TO 15,000 FT

Airfield Wx

- KLAL 081751Z 18004KT 10SM SCT044 33/23 A3003

KLAL 081721Z 0818/0918 18006KT P6SM BKN035

FM081900 20007KT P6SM VCTS BKN040CB

FM082200 11006KT P6SM VCTS BKN050CB

FM090200 VRB03KT P6SM FEW040 SCT250

FM091400 14007KT P6SM SCT035 SCT250

Hazards

- Icing
 - Freezing / Melting Altitude 17,000 ft
- Turbulence – in convection
- Volcanic Ash - Negative
- HD - yes
- Rapid Intensification – no
- Sea Salt Accretion Forecast – Negative
 - Boundary Layer - No
 - Lack of Precip - No
 - RH > 80% - Yes
 - Large sea surface / air temperature gradient - No
 - High Surface Winds - Yes
 - Long fetch / duration - No