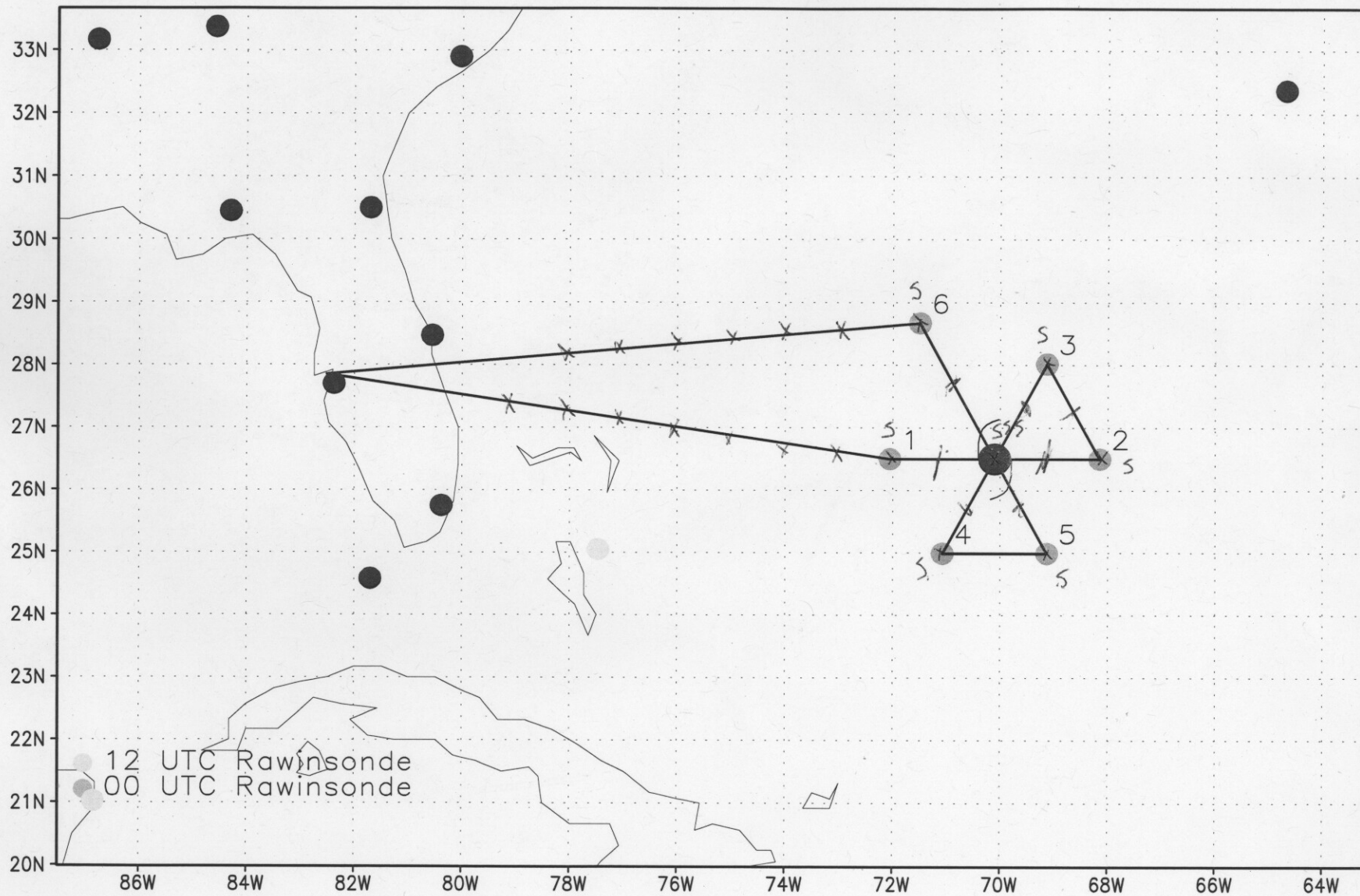
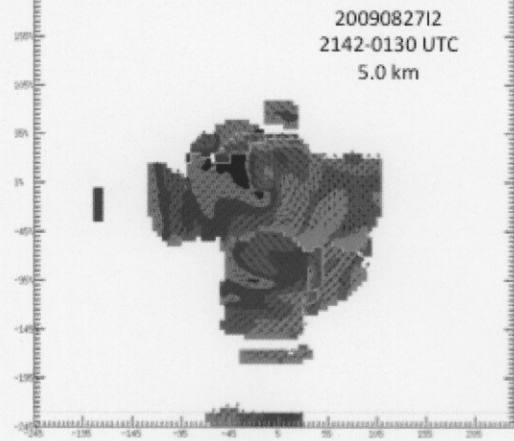
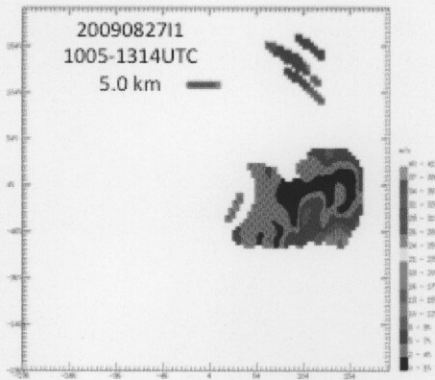
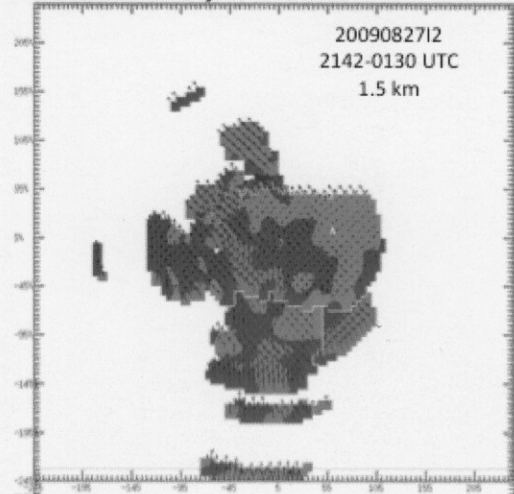
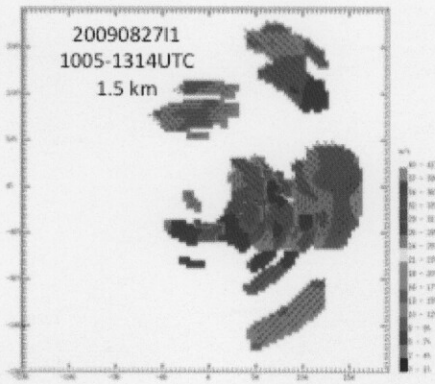


WXOSA DANNY2

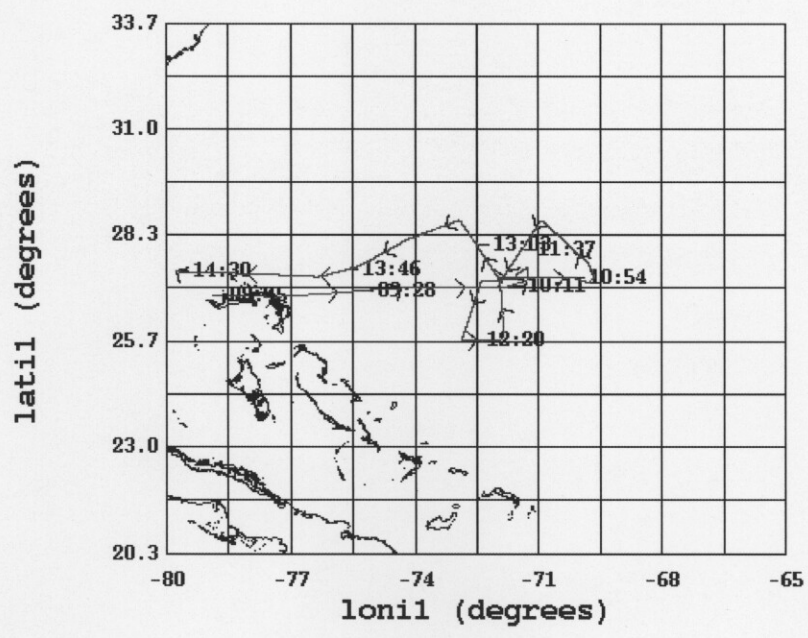
090827I1



### Hurricane Danny Doppler Radar Analyses 20090827

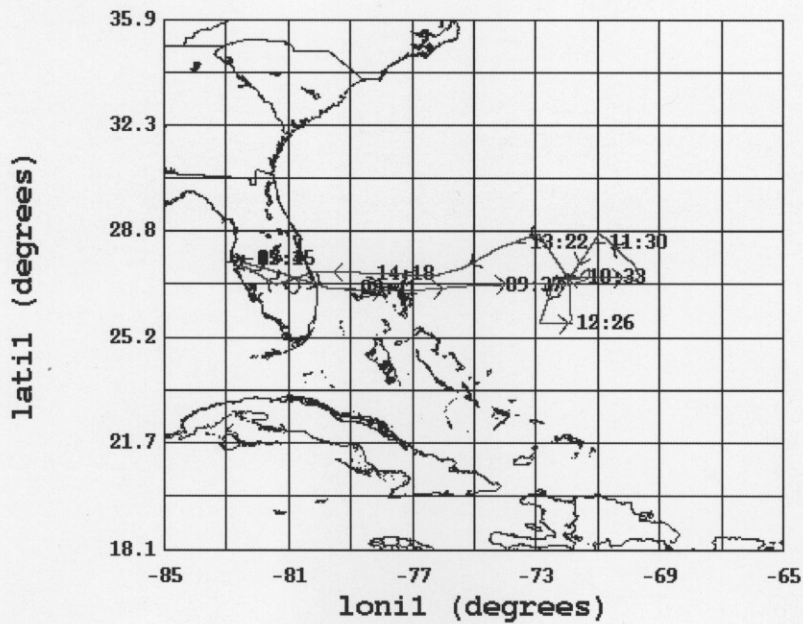


N43RF TS Danny 090827I1  
08/27/2009 UTC, 08:45:00-14:30:00



	mean	sigma	min	max
lati1 (degrees), 1 s/sec	27.26	0.67	25.67	28.70
loni1 (degrees), 1 s/sec	-73.52	2.60	-79.76	-69.64

N43RF TS Danny 090827I1  
08/27/2009 UTC, 07:45:00-15:15:00



	mean	sigma	min	max
— latil (degrees), 1 s/sec	27.29	0.61	25.67	28.70
lonil (degrees), 1 s/sec	-75.34	4.05	-82.66	-69.64

From Eric Uhlhorn <eric.uhlhorn@gmail.com>

Sent Wednesday, August 26, 2009 10:35 pm

To John.Gamache@noaa.gov

Cc A Barry Damiano <A.Barry.Damiano@noaa.gov> , Eric.Uhlhorn@noaa.gov , Robert.Rogers@noaa.gov , Jason.Dunion@noaa.gov , tshinson@gmail.com , James McFadden <Jim.D.Mcfadden@noaa.gov> , Barry.Choy@noaa.gov

Subject Re: Flight track for 090827I1 on Thursday morning

Barry,

AXBT locations are as follows.

Along inbound leg to IP:

1 79W

2 78W

3 77W

4 76W

5 75W

6 74W

7 73W

8 72W/IP/pt#1

9 Center

10 pt#2 (turn)

11 pt#3 (turn)

12 pt#4 (turn)

13 pt#5 (turn)

14 FP/pt#6 (turn)

Along outbound leg from FP:

15 73W

16 74W

17 75W

18 76W

19 77W

20 78W

Delete #s 19 and 20 if they aren't available. Don't worry about re-deploying for a bad drop.

Thanks!

eric

On Wed, Aug 26, 2009 at 10:17 PM, <John.Gamache@noaa.gov> wrote:

Hi Barry,

Here is the flight track proposed for this morning's flight. We are expecting the center to be NE of the

presently accepted one. We used a center of 26.5, 70.1 at the IP of the flight. The flight would be at 12,000 ft, and would have drops at the midpoints of the legs, the ends of the legs, and 1 at the center, in the pass closest to 0000 UTC. This would be 13 drops.

John

Barry,  
AXBT locations are as follows.

Along inbound leg to IP:

- 1 79W
- 2 78W
- 3 77W
- 4 76W
- 5 75W
- 6 74W
- 7 73W
- 8 72W (IP)pt#1

9 Center

- 10 pt#2 (turn)
- 11 pt#3 (turn)
- 12 pt#4 (turn)
- 13 pt#5 (turn)
- 14 FP/pt#6 (turn)

Along outbound leg from FP:

- 15 73W
- 16 74W
- 17 75W
- 18 76W
- 19 77W
- 20 78W

Notes: #s 19 and 20 if they aren't available. Don't worry about re-deploying for about 2009.

Thanks!  
etc

On Wed, Aug 26, 2009 at 10:17 PM, <John.Gameche@noaa.gov> wrote:

Hi Barry,

Here is the flight track proposed for this morning's flight. We are expecting the center to be NE of the