

RADAR PREFLIGHT CHECKLIST

AUG 5 1980

FLIGHT # 800805H 1

A.C. # 42RF

OPERATOR WIRFEL / PARRISH

RADAR TECH JIM DEGRAVERUT

NUMBER OF DIGITAL MAGNETIC TAPES ONBOARD 14+20

NUMBER OF VIDEO TAPES ONBOARD 10+ (First flight w/ NHRL VTR)

NUMBER OF TAPE LABELS ON BOARD 50+

COMPONENT SYSTEMS UP AND CHECKED.

RDSC ✓
COMPUTER ✓
DMTR1 ✓
DMTR2 ✓

VTR OK ✓
DSC1 ✓
DSC2 ✓
SCOPES ✓

NO ✓
LF ✓
TA ✓

Time correction between radar time and digital time +1 sec

RADAR POSTFLIGHT SUMMARY

NUMBER OF DIGITAL TAPES USED DMTR 1 8
DMTR 2 7

NUMBER OF VIDEO TAPES USED 2

SIGNIFICANT RECORDER DOWN TIME (other than for tape changes).

DMTR: LF _____
NO _____
TA _____

VTR: LF _____
NO _____
TA _____

OTHER PROBLEMS: (stabilization, interference, etc.) NONE.

NHRL VTR shorted out when applied power supply.

NHEML RADAR TAPE LOG

AUG 5 1980

FLIGHT 800805H1

AIRCRAFT 42RF

OPERATOR WIRFEL/PARRISH SHEET 1 OF 1

TAPE #	TIME ON	TIME OFF	SOURCE RADARS			REWOUND?		COMMENTS
			NO	TA	LF	YES	NO	
1-1	103800	111520		✓	✓		✓	
VTR-1	105200	123940			✓	✓		~ 120240 changed to Tail on DSC-2 * 121110 - Back to LF on DSC-2 & on VTR
2-1	111525	115110		✓	✓		✓	1150 in eye. Inner eye dissipated
1-2	115115	122625		✓	✓		✓	Outer eye wind max & radar eye agree ~ 40 NM in diameter
2-2	122630	130500		✓	✓		✓	12357 → 2 nd Pass in eye. Still 40 NM wide, some returning center. Also some blue sky above.
VTR-2	124241	134030			✓			VTR failed when connected power supply.
1-3	130505	134020		✓	✓		✓	
2-3	134025	141635		✓	✓		✓	1355 - inner eye reforming, more intense.
1-4	141640	145205		✓	✓		✓	
2-4	145210	152816		✓	✓		✓	
1-5	152820	160700		✓	✓		✓	Outer eye wall dominant
2-5	160705	164400		✓	✓		✓	Levels 4 & 5 common at 15K
1-6	164405	172230		✓	✓		✓	Tremendous slope to eye wall
2-6	172234	175815		✓	✓		✓	
1-7	175820	183320		✓	✓		✓	
2-7	183328	190915		✓	✓		✓	
1-8	190920	192216 191651			✓		✓	1905 → faint Hepanoba
1-8	192301	192546	✓				✓	191904 192103 LF Calib 191699
		NOSE Calibration						
			192328					
			192415					
			192454					

WHEML RADAR LOG

AUG 5 1980

OPERATOR WIRFEL

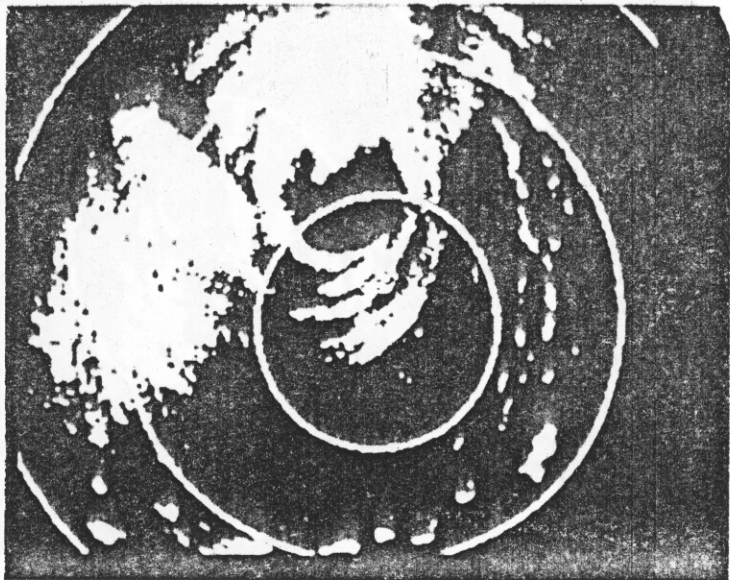
SHEET 1 OF 1

RADAR DOWN-TIME LOG

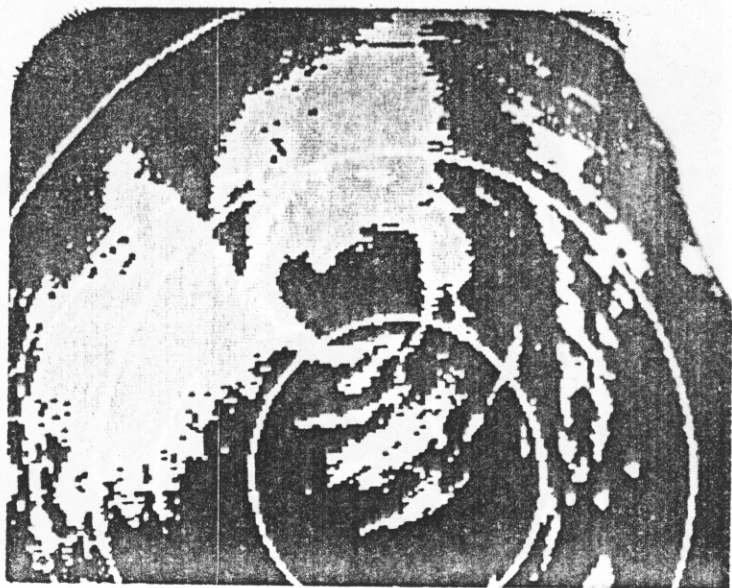
800805H1

<u>ITEM</u>	<u>TIME DOWN</u>	<u>TIME UP</u>	<u>PROBLEM</u>
<i>Possible trigger problem on LF + tail</i>			
1340 VTR	1340	—	connected power supply when battery was low and VTR fuse blew.

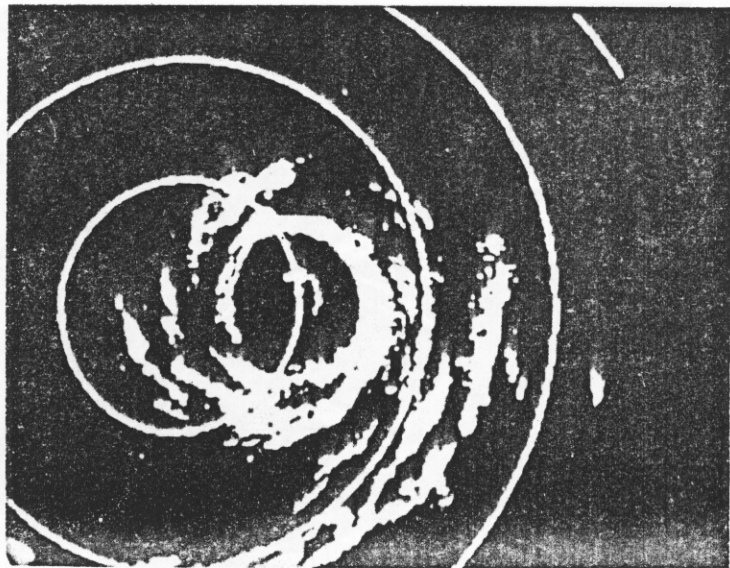
ITEM LIST: VTR, DMTRI, DMTR2, COMP, ROSC, LF, NO, TA, DSCI, DSC2



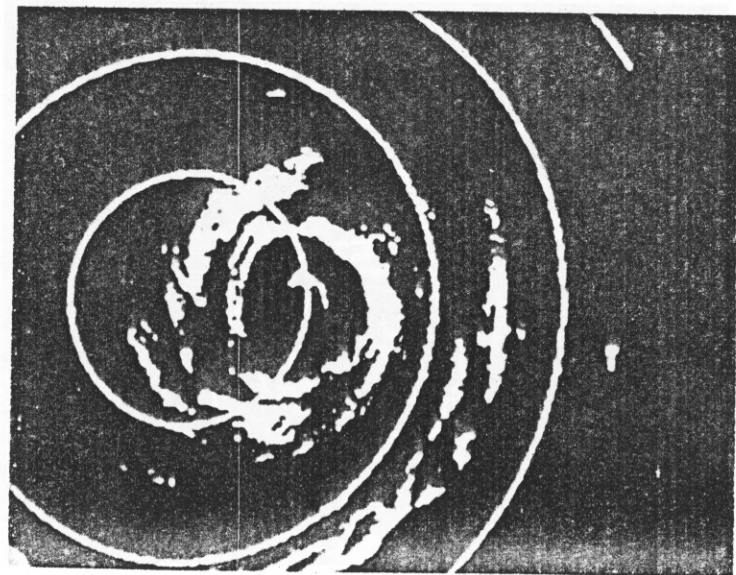
115930-205.8 -
FIRST APPROACH



120210 - 206.0

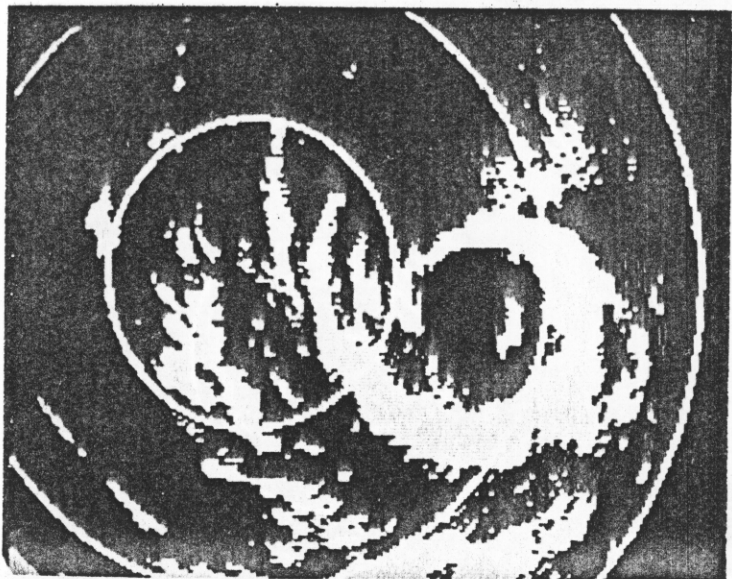


121430 - 328.0

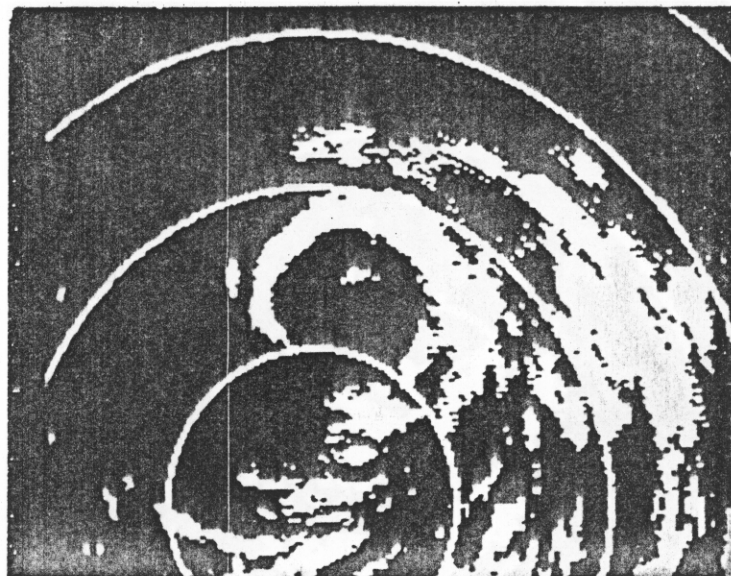


121646 - 331.5

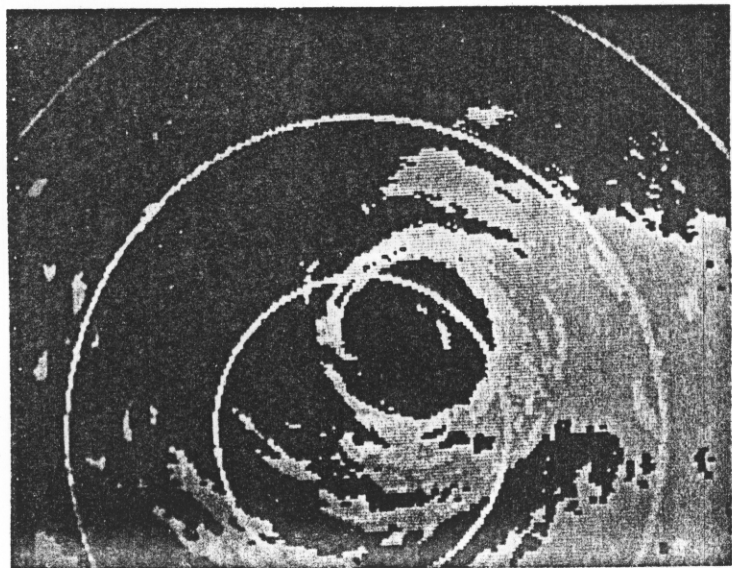
42 RF
800805H (i)



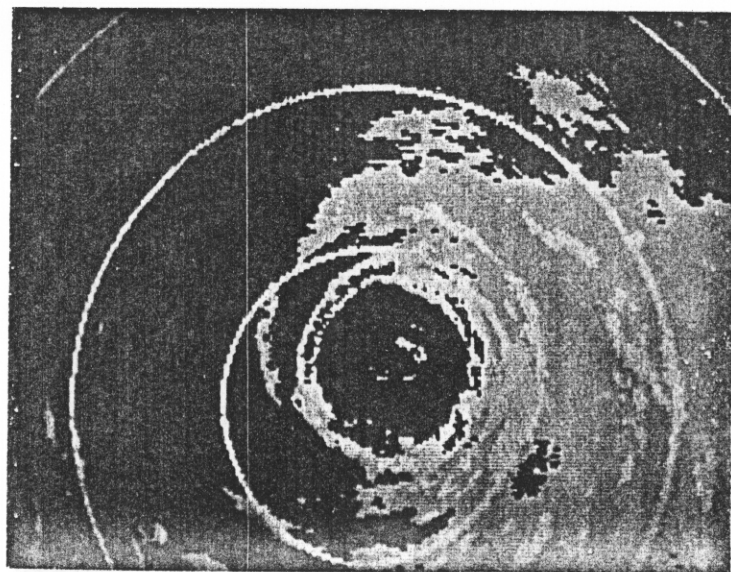
130110-216.4-+1.0



131030-317.0-+0.8



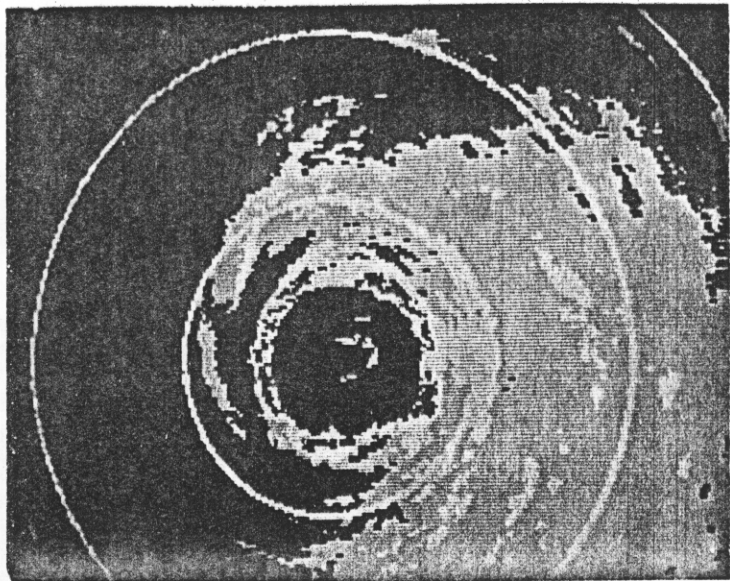
131520-291.0-+0.5



131927-309.0-+0.5

800805H(2)

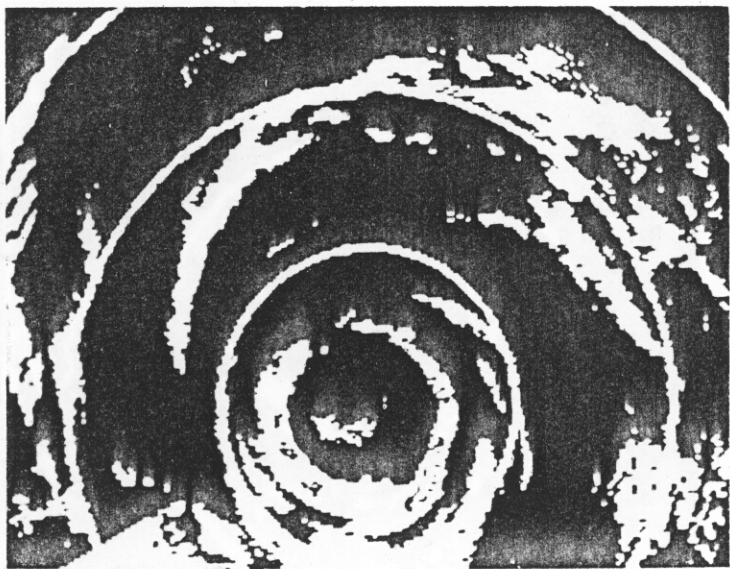
DATE ORDER 441



132200 - 1ND EYE

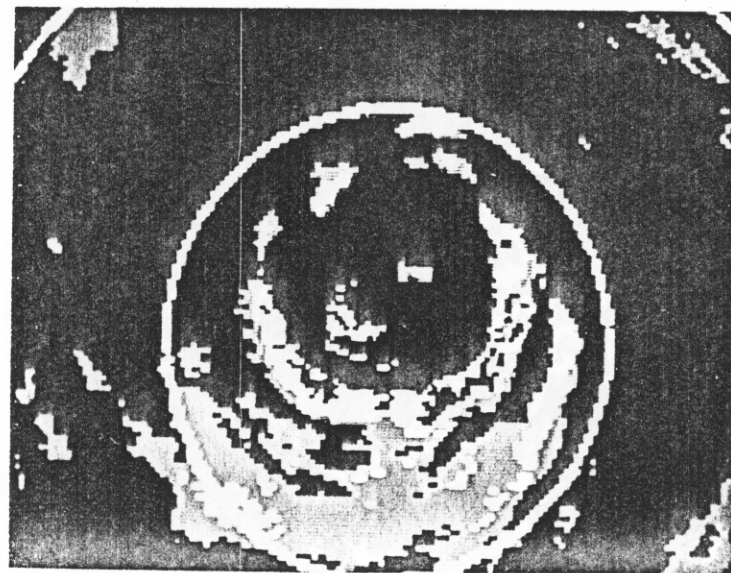


135100/146.8/+0.5

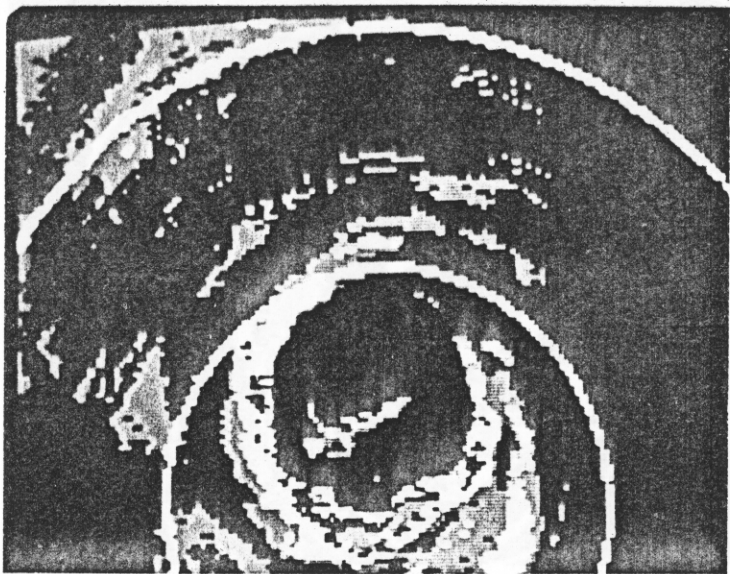


140130/145.0/+0.5

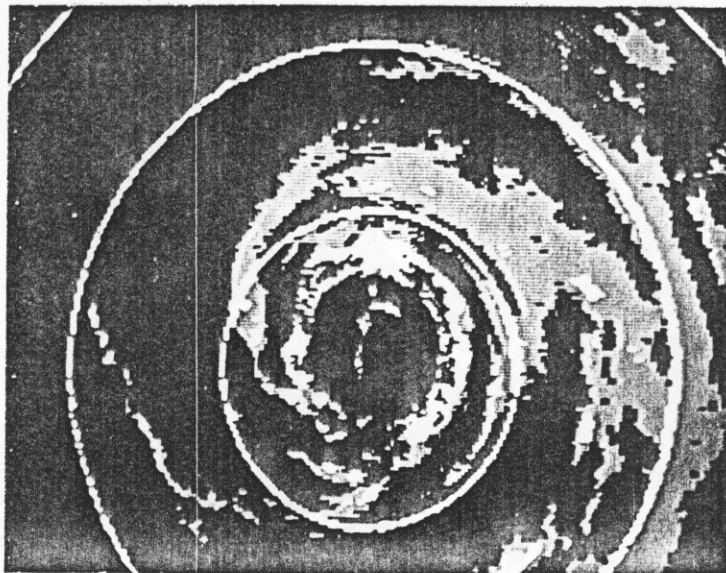
800805H (3)



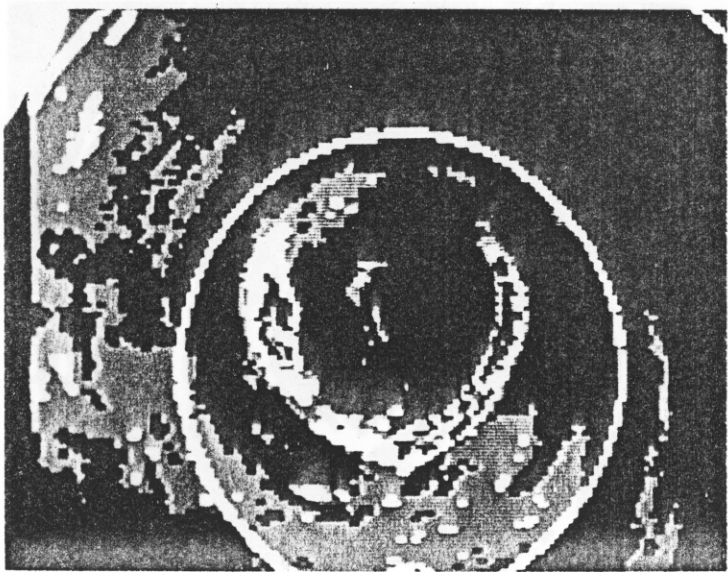
143950/144.0/+0.5



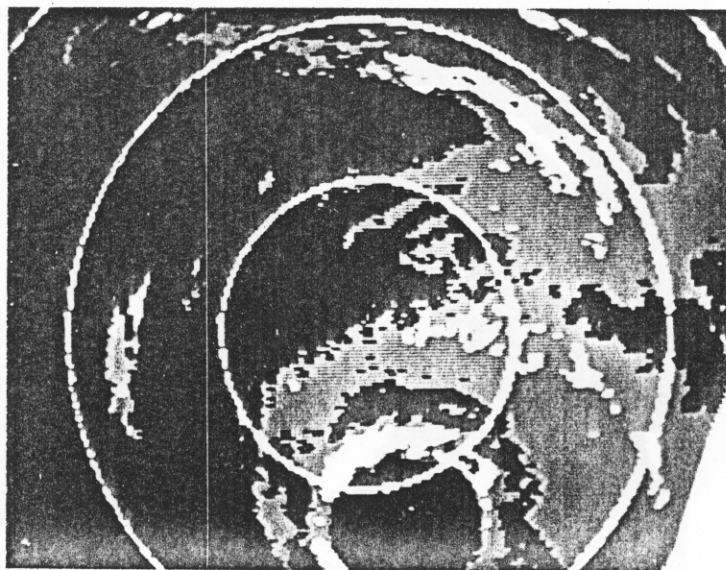
152228/128.0/+1.0



153140/329.0/+1.0

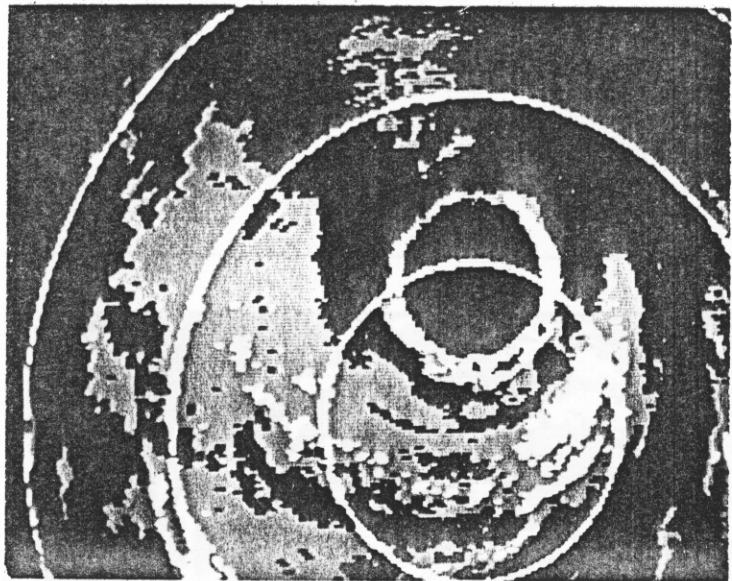


1161218/126.0/IN THE EYE

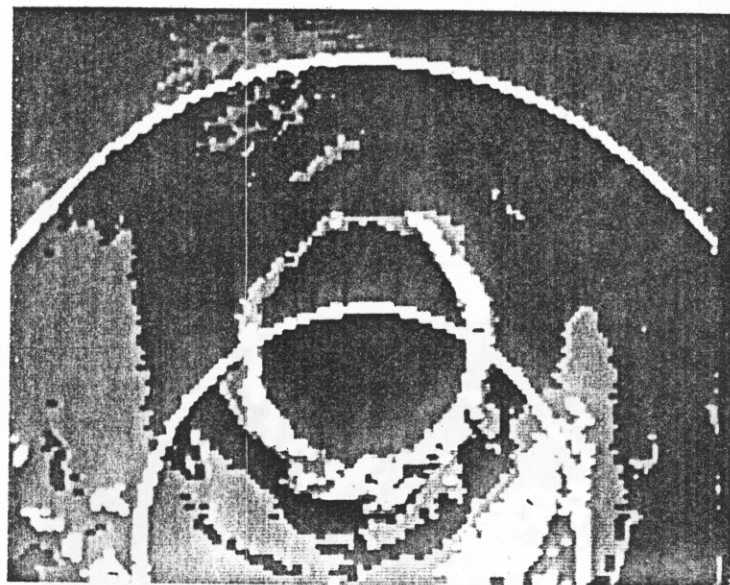


1163410/348.0/0.0

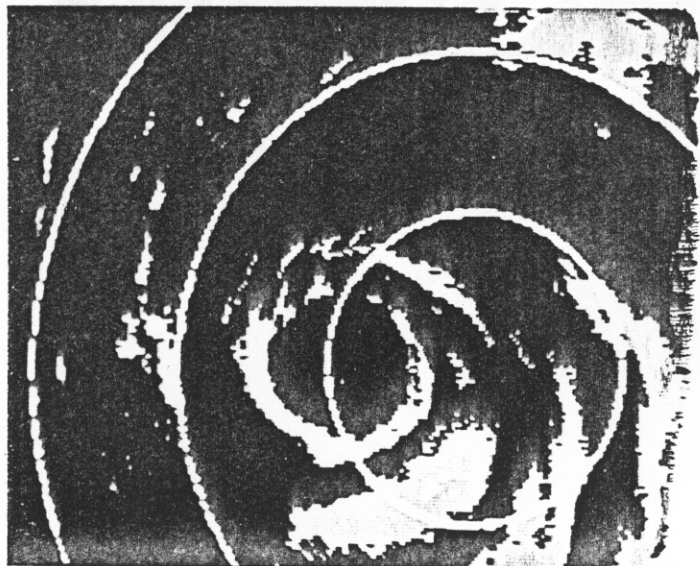
CONFIDENTIAL (U)



165230/146.0/-0.2

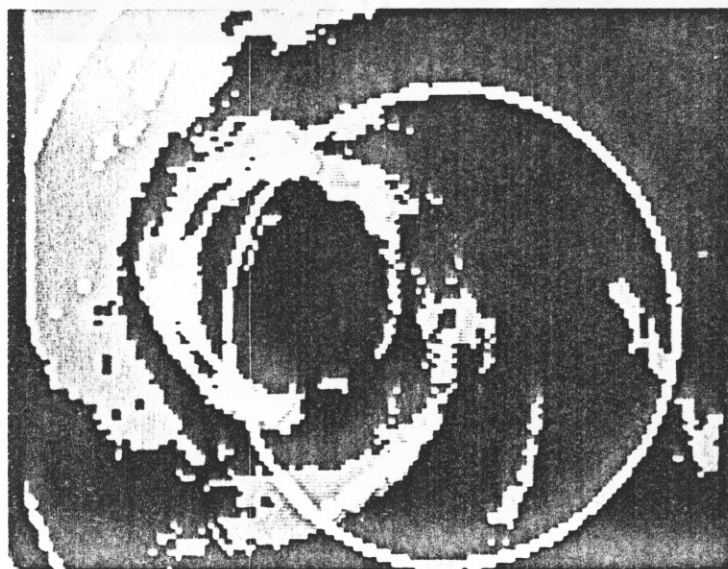


165315/147.0/0.0/3X

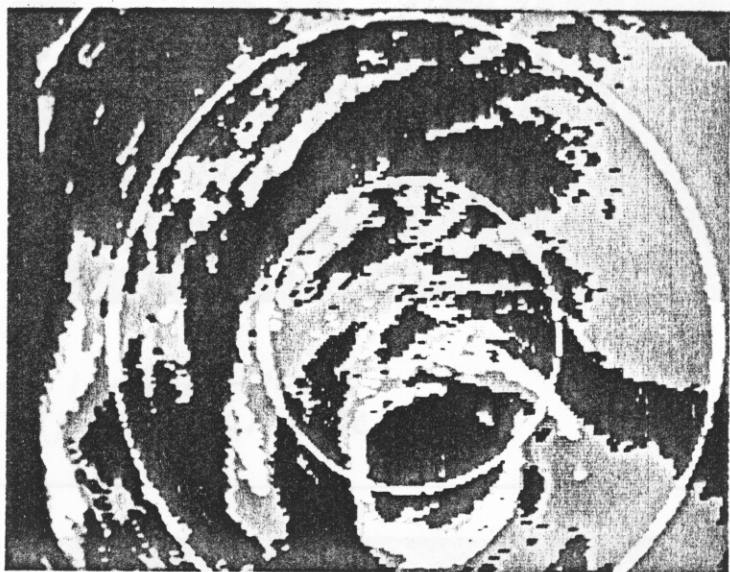


174220/144.0/0.0 HIRADIOLA IN
UPPER RIGHT

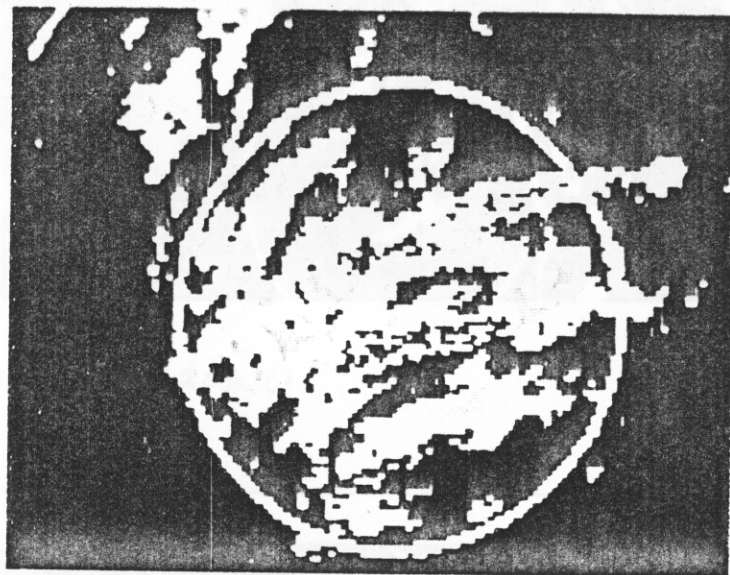
800805H(5)



175145 SHOWING RAINBAND WE
FOR SPW TML



180720/99.0/0.0



183600/80.0/+3.5
RAIDBAND USED IN MULTI-
LEVEL INVESTIGATION

800805H (6)