

N42RF ERROR SUMMARY  
20180709H2 TS Chris Mission 0903A

Flight ID: 20180709H2

Sensor or System -----	Number or Name -----
Static Pressure Probe	PSM.2
Dynamic Pressure Probe	PQM.2
Total Temperature Probe	TTM.1
Dewpoint Temp. Probe	TDM.2
Vertical Accelerometer	AccZfilterI-GPS.1
Altimeter	AltGPS.3
INE Selection	1
Differential Attack Pressure Probe	PDALPHA.1
Differential Sideslip Pressure Probe	PDBETA.1
Dynamic Attack Pressure Probe	PQALPHA.1
Dynamic Sideslip Pressure Probe	PQBETA.1

Flight Directory                               acdata/2018/MET/20180709H2

Local Met Data	Takeoff KLAL (2025Z)	Landing KLAL (0429Z)
Dynamic Corrections		Yes
AttackAngleIntercept		2.31252
AttackAngleSlope		6.06758
SlipAngleIntercept		0.4295
SlipAngleSlope		7.17033

---

Notes:

There were no edits made in the measured parameters used to calculate meteorological and navigational parameters.

Takeoff/Landing data: Data during landing and takeoff are potentially suspect. It is recommended that ground data not be used for scientific analysis.

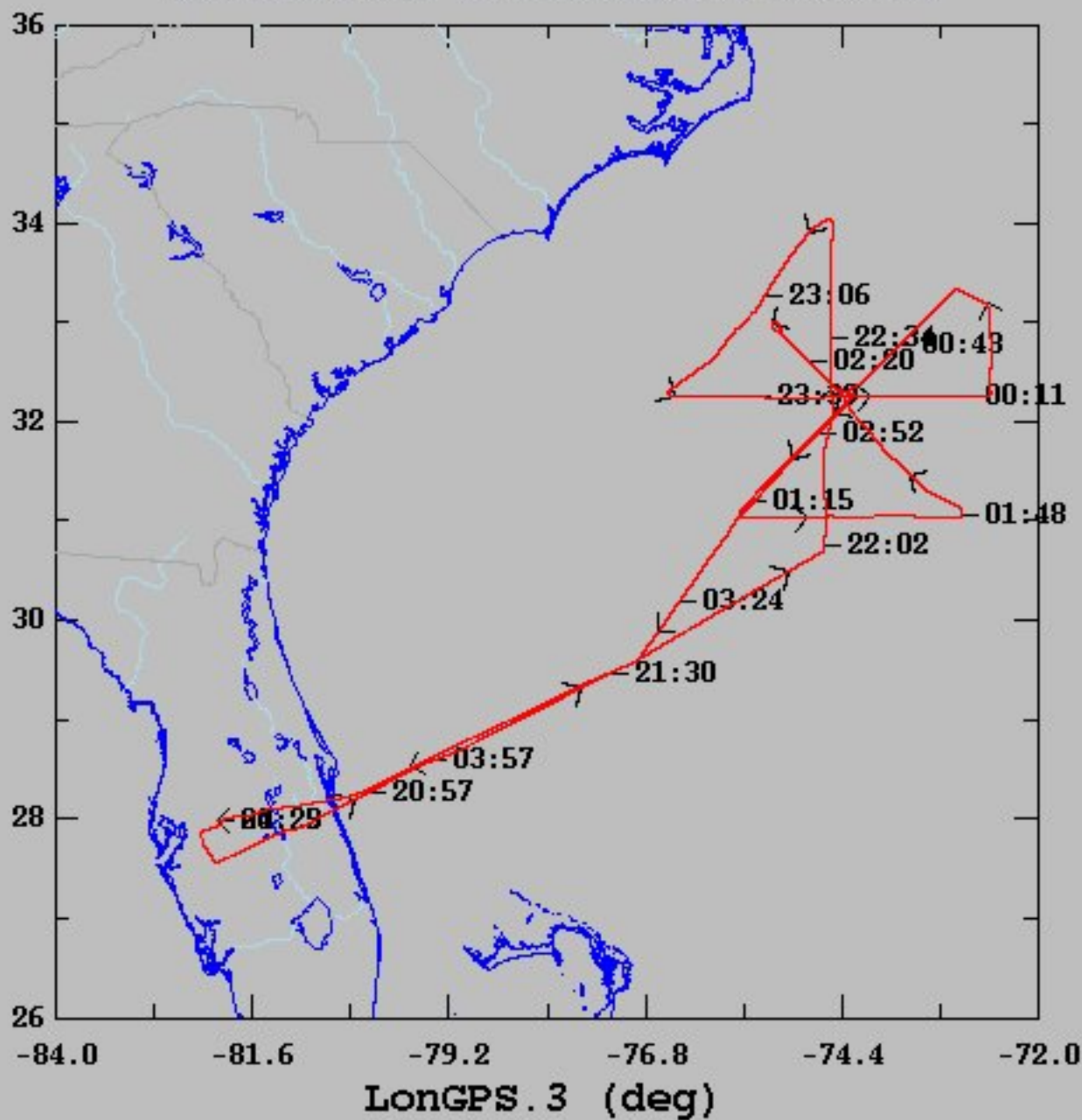
PDAlpha.2 inop. Maycomm TDL TDM.3 again performed well in storm environment at altitudes between 8K and 12K. TDM.2 Edgetech is reference hygrometer

Expendable Type -----	# deployed -----	# good -----	# transmitted -----
Dropsondes	21	21	21
Test sondes	0	0	0
AXBTs	0	0	0
AXCPs	0	0	0
AXCTDs	0	0	0
UAS	0	0	0

Flight Director: Henning  
Phone #: (863) 500-3982

ACAT-4 Version = 7.1

07/09/2018, 20:25:38-28:29:20  
TROPICAL STORM CHRIS  
20180709H2 MISSION 0903A



## NOAA Aircraft Operations Center - NOAA 42 Flight Manifest

FLIGHT INFORMATION				CREW MANIFEST			MISSION INFORMATION				
FLT ID:	20180709H2	FLT #:		AC:	PRICE	Scientists:	Pressure		Dropsondes		
From:	KLAL	ETD:	2030Z	CP(s):	DIDIER	Frank Marks (HRD) Hui Christophersen (HRD) Ghassan Alaka(HRD)	A/C Takeoff	1014.6	Good	Bad	Sent
To:	KLAL	ETA:	0430Z	Nav(s):	ABITBOL		Wx Station Takeoff	1015.0	21	0	21
<b>Block Time</b>		<b>Flight Time</b>		FE(s):	FREEMAN		A/C Land	1014.5	BTs		
In:	0437	In:	0429	FD(s):	DARBY	Visitors:	Wx Station Land	1015.9	Good	Bad	Sent
Out:	2014	Out:	2025	SEB:	HEYTEK		Storm Number ID:				
Total:	8.4	Total:	8.1	SSA:	HENNING		(ie: AL072012)		AL032018		
Sponsoring Org:	EMC			AVAPS:	PEEK		TCPOD/WSPOD Mission				
Program:	PRX				RICHARDS		(ie: NOAA2 2418A SANDY)		NOAA2 0903A CHRIS		
Purpose:	EMC TDR Mission				T LYNCH		OBSERVATIONS				
AS REQUIRED BY ORM				Y	N	REMARKS	Fix Number	Obs Number	Fix Time	SLP	
VOLCANIC ASH					X		1	#5	2225z	995mb	60kts
SCIENCE MISSION WITHIN BDRY LAYER					X		2	#16	2353z	996mb	55kts
LACK OF PRECIPITATION					X		3	#25	0055z	996mb	63kts
RELATIVE HUMIDITY ≥ 80%				X			4	#29	0212z	995mb	57kts
LARGE AIR-SEA TEMP GRADIENT					X		5	#36	0243z	996mb	56kts
HIGH SURFACE WINDS				X							
LONG FETCH / DURATION OF SFC WND				X							
SEA SALT ACCRETION FORECAST					X						
SEA SALT ACCRETION OBSERVED											

Additional Remarks:

\*Highlighted items must be completed before departure.

Cockpit Gmax:

Gmin:

2045z 30.12 30c  
0415z 30.15 24c

TS CHRIS  
**APPENDIX 2 – GIV QC Checklist**

PSM#2

Flight ID:	20180709H2
Flight Director(s):	HENNING

Pressure Comparison		
	T/O	Land
Aircraft	1014.6	1014.5
Tower	1015.0	1015.9

UWZ.d mean: +0.13 for A.nc file  
 +0.06 for AC.nc file  
 +0.05 DPJ WSZ

	Raw 1Hz Mean File Parameters				C File Parameters	
Accelerometer	AccAXI.1	AccAYI.1	AccAZI.1		AccZref	
	AccAXI.2	AccAYI.2	AccAZI.2			
	AccAXI.3	AccAYI.3	AccAZI.3			
Altitude	AltGPS.1	AltI.1	AltPaADDU.1	AltBCADDU.1	ALTref	
	AltGPS.2	AltI.2	AltPaADDU.2	AltBCADDU.2	ALTPA.d	
	AltGPS.3	AltI.3	AltRA.1		ALTGA.d	
Ground Speed	GsXI-GPS.1	GsXI.1	GsGPS.1	GsXGPS.1	GSXref	
	GsXI-GPS.2	GsXI.2	GsGPS.2	GsXGPS.2	GSYref	
	GsYI-GPS.1	GsXI.3		GsYGPS.1	GSZref	
	GsYI-GPS.2	GsYI.1	GsZI.1	GsYGPS.2		
	GsZI-GPS.1	GsYI.2	GsZI.2	GsZGPS.1		
	GsZI-GPS.2	GsYI.3	GsZI.3	GsZGPS.2		
Lat/Lon	LatGPS.1	LatI.1	LonGPS.1	LonI.1	LATref	
	LatGPS.2	LatI.2	LonGPS.2	LonI.2	LONref	
	LatGPS.3		LonGPS.3			
Pressure	PDALPHA.1	PQALPHA.1	PQM.1	PSM.1	PDALPHaref	PQMref
	PDALPHA.2	PQALPHA.2	PQM.2	PSM.2	PDBETaref	PQ.c
	PDBETA.1	PQBETA.1	PQM.11	PSM.11	PQALPHaref	PSMref
	PDBETA.2	PQBETA.2			PQBETaref	PS.c
Air Speed	CasADDU.1	TasADDU.1	IasADDU.1		IAS.d	TAS.d
Pitch/Roll	PitchI.1	PitchRateI.1	RollI.1	RollRateI.1	PITCHref	
	PitchI.2	PitchRateI.2	RollI.2	RollRateI.2	ROLLref	
	PitchI.3	PitchRateI.3	RollI.3	RollRateI.3		
Temp/Dewpt	TTM.1	TTM.11	TDM.1		TD.c	TTMref
	TTM.2	TTM.13	TDM.2		TDMref	TA.d
	TTM.3	TTM.4	TDM.11			
Miscellaneous (must check)					UWZ.d	WS.d
					DPJ_WSZ	WD.d
					HUM	

**Mission Documents:**

<input checked="" type="checkbox"/>	Error Summary
<input checked="" type="checkbox"/>	Crew Manifest
<input checked="" type="checkbox"/>	QC checklist
<input type="checkbox"/>	Dropwindsonde Log(s) – AVAPS and FD if completed
<input type="checkbox"/>	Miscellaneous FD notes

**NOTES:** PDAAlpha.2 still INOP (stuck too close to zero). PDBeta.2 still displaying much less variance as PDBeta.1. Maycomm again performed well for 4.5 hours in storm environment.