

19841010I-DROP

PAGE 1 OF

AOML/HRD

10861 01 100

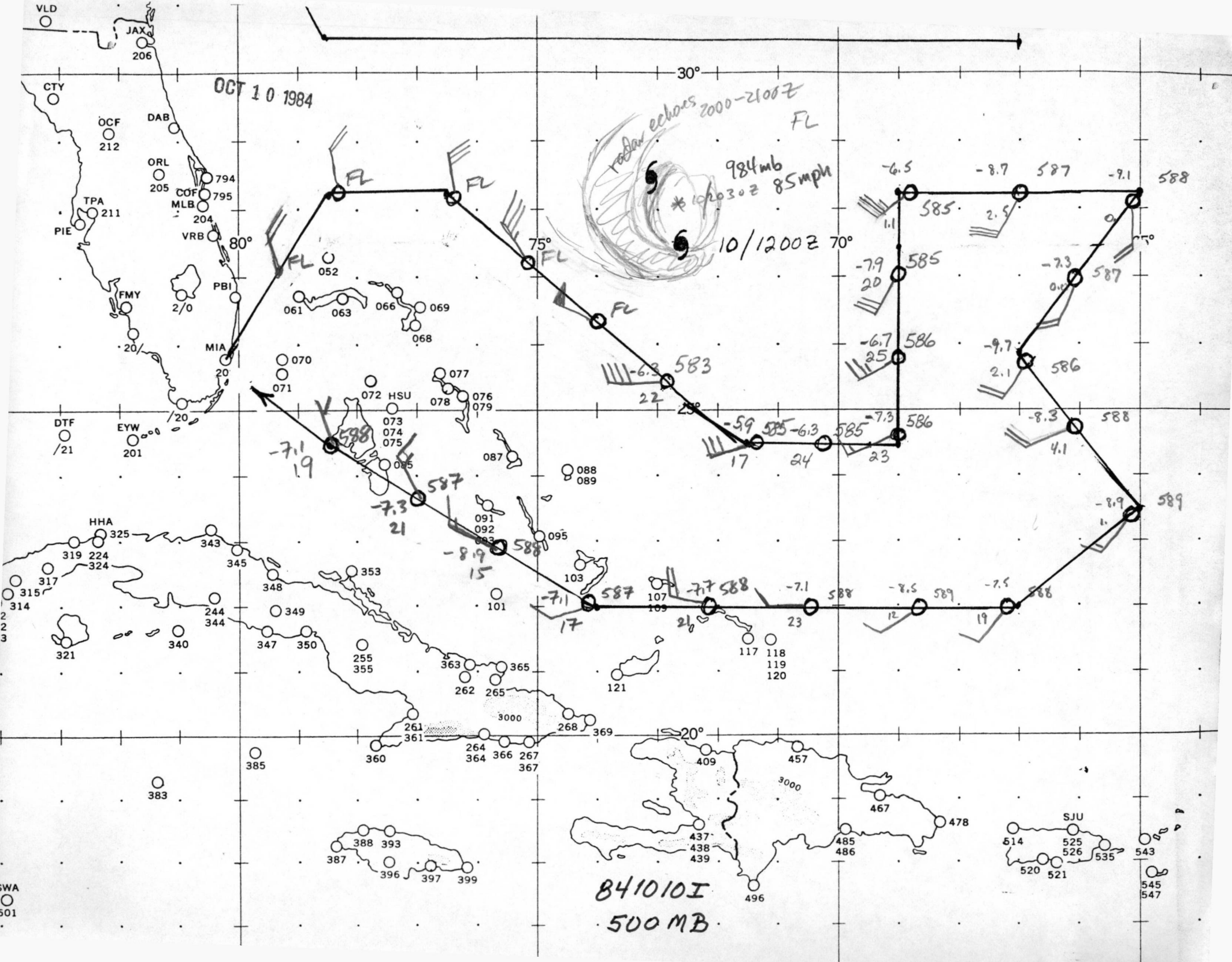
OMEGA-DROPWINDSONDE SCIENTIST LOG

FLIGHT: 841010I1STORM: Josephine

OCT 10 1984

ODW SCIENTISTS BurpeeDorstMarksOPERATOR Zysko/Schricker*knots*

DROP #	SONDE ID #	TIME (GHT)	LAT (°)	LONG (°)	WIND (FTS) [WD/WS]	HEIGHT (GA)	TEMP (TA)	DEW PT TMP (TD)	PRESSURE (PS)	REMARKS
4	13247	1844	30.0	67.4	135/17	5518	-1.8	-17.1	523.6	example
1	00057	1947	28.3	78.4	340/20	5477	-4.9	-16.4	524.3	
2	13978	2009	28.2	76.5	350/28	5453	-4.0	-16.5	524.9	
3	20676	2026	27.3	75.2	320/36	5436	-2.8	-15.3	525.2	bad T beginning at 775 mb
4	00058	2042	26.4	74.0	300/48	5420	-2.3	-8.4	525.6	
5	10083	2059	25.5	72.7	270/40	6097	-6.6	-17.9	483.4	
6	20678	2117	24.5	71.5	260/28	6106	-7.4	-18.8	483.9	bad T beginning at 740 mb
7	00195	2129	24.5	70.2	260/28	6107	-7.5	-19.6	484.1	STREAMER good PTH
8	10084	2143	24.5	69.0	260/17	6111	-8.6	-19.9	484.3	
9	20277	2157	25.7	68.9	240/24	6101	-7.5	-19.5	484.5	
10	00060	2212	27.0	69.0	210/28	6120	-7.8	-19.9	482.7	turn 2246 z
11	10088	2228	28.3	68.9	210/34	6112	-8.3	-18.7	482.9	
12	20105	2248	28.3	66.9	200/32	6138	-10.5	-18.3	482.9	turn 230730 ^{near splash}
13	00190	2309	28.2	65.0	180/21	6145	-9.7	-14.7	483.0	
14	10087	2328	27.0	66.0	190/20	6790	-14.3	-19.4	443.9	estimated press. of because Terry baselined the sonde before we climbed
15	20121	2348	25.8	66.9	240/17	7110	-15.2	-21.3	425.0	turn 2347 #14 at 960mb

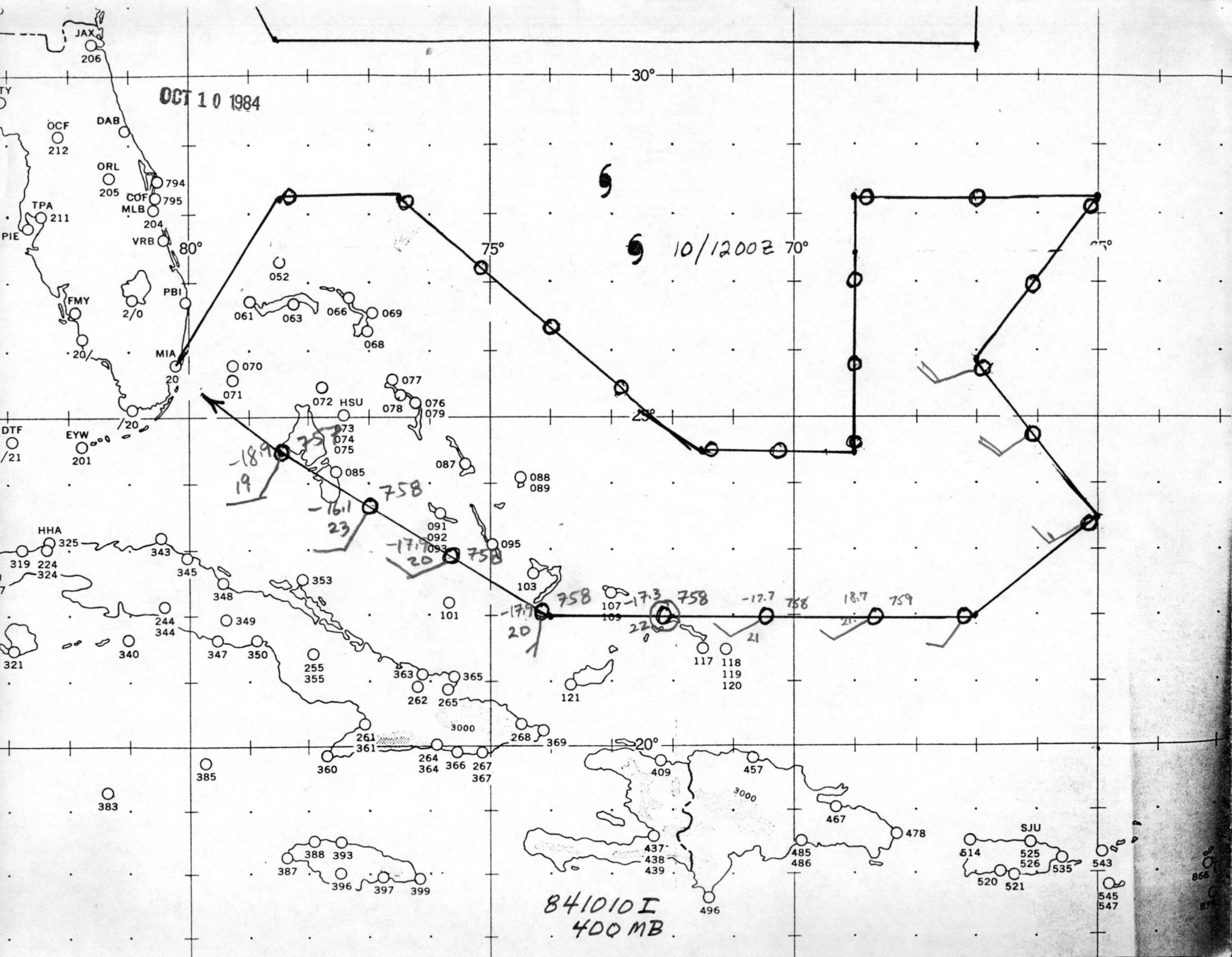


OCT 10 1984

841010I
500 MB

radar echoes 2000-2100Z
FL
984mb
* 102030Z 85mph
10/1200Z 70°

SWA
501



OCT 10 1984

10/1200Z 70°

841010I
400 MB

-18.9
19

-16.1
23

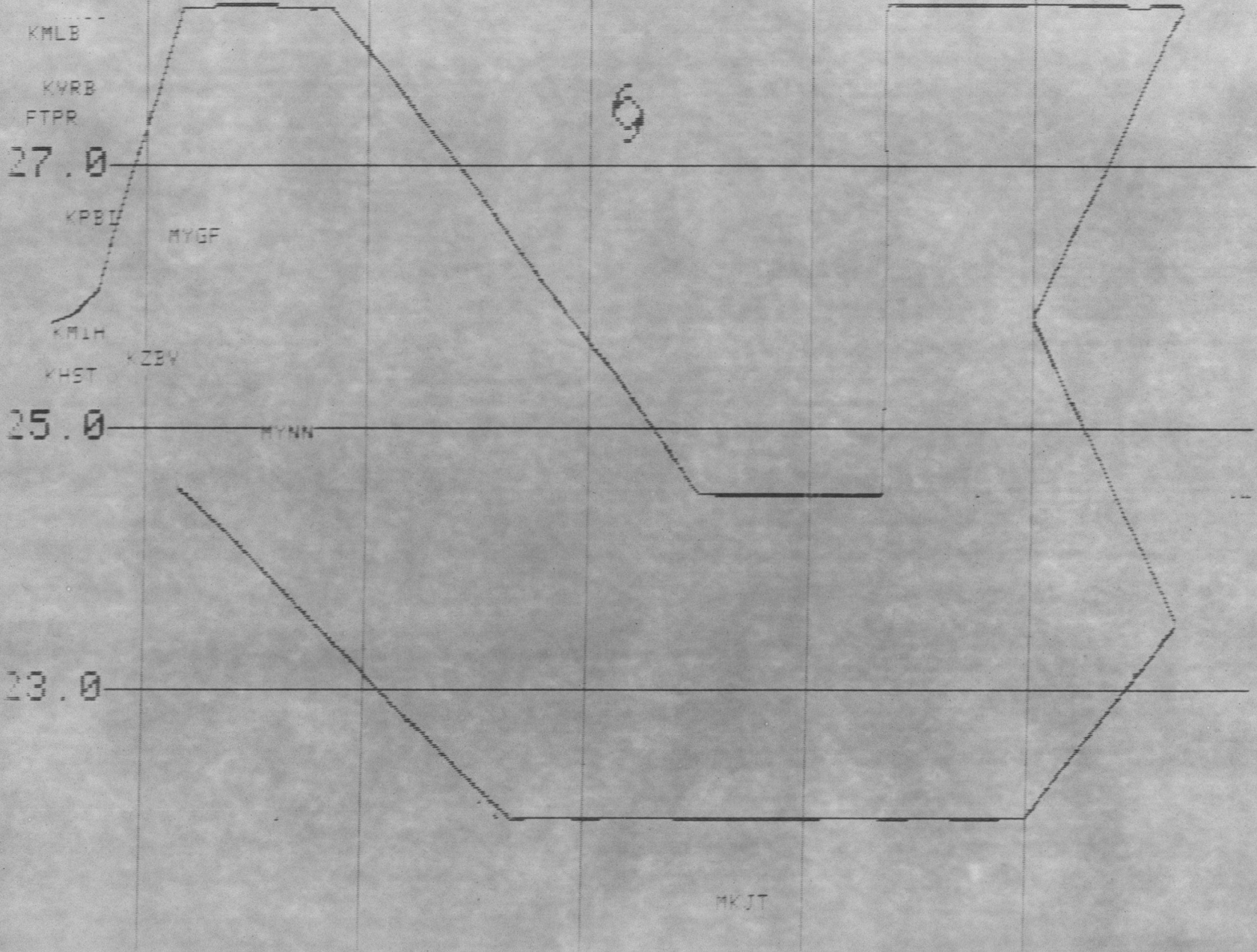
-17.7
20

-17.7
20

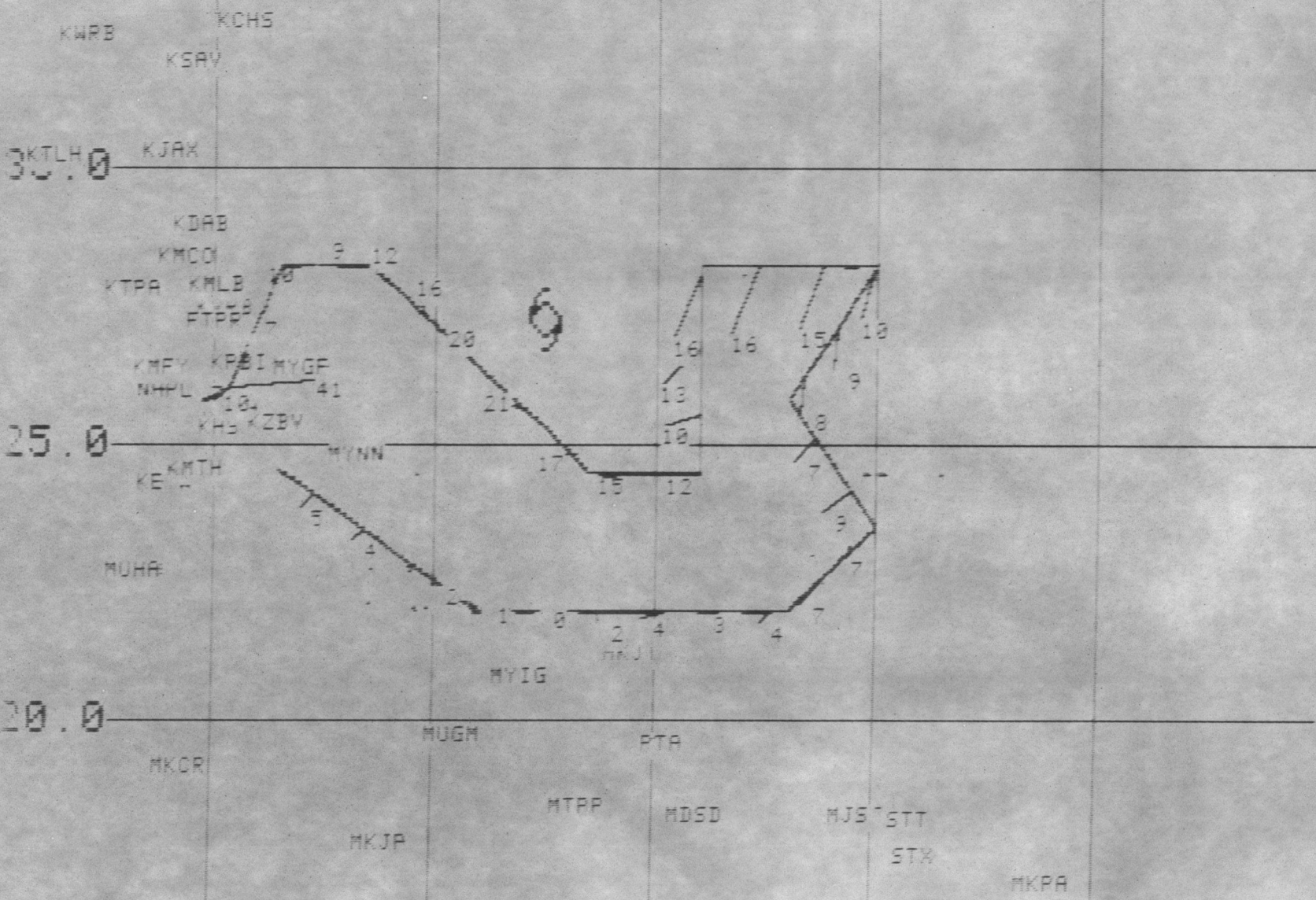
-17.7
21

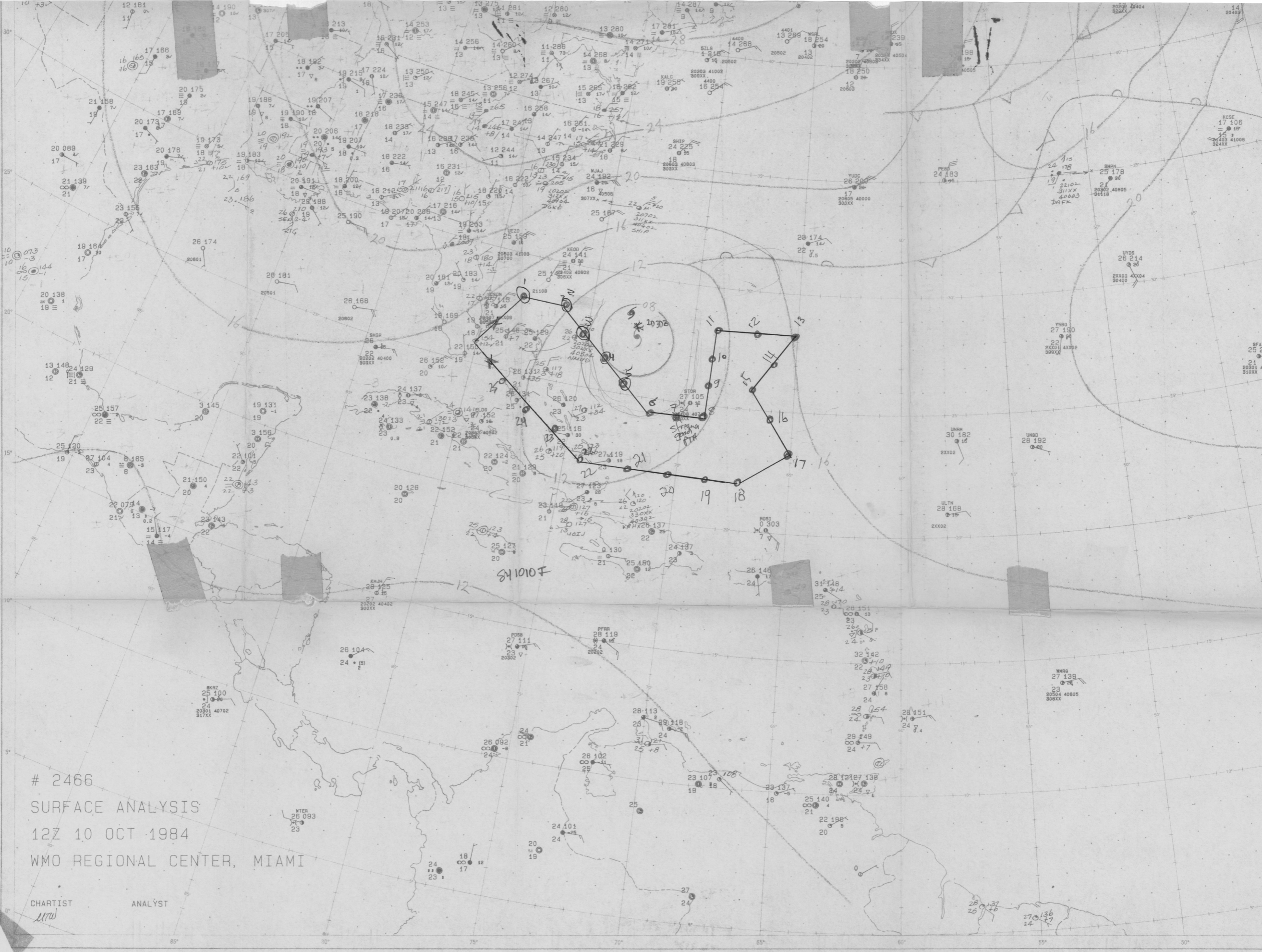
545
547

79 0 76 0 73 0 70 0 67 0
18:26:10 841010 090 FTRK 3:13:57



90 0 75 0 70 0 65 0 60 0
18.23 0 841010 000 FTRK 3:13:46





2466
SURFACE ANALYSIS
12Z 10 OCT 1984
WMO REGIONAL CENTER, MIAMI

CHARTIST
ANALYST

1170