

RADAR PREFLIGHT CHECKLIST

OCT 13 1983

FLIGHT # 831013 H

A.C. # 42RF

OPERATOR Frank Markes Jr.

RADAR TECH Gary Baines / Burles

NUMBER OF DIGITAL MAGNETIC TAPES ONBOARD ~18

NUMBER OF VIDEO TAPES ONBOARD 4

NUMBER OF TAPE LABELS ON BOARD >100

COMPONENT SYSTEMS UP AND CHECKED.

RDSC X
 COMPUTER X
 DMTR1 X
 DMTR2 X

VTR Y
 DSC1 X
 DSC2 X
 SCOPES X

NO
 LF X
 TA X

Time correction between radar time and digital time 20.1

RADAR POSTFLIGHT SUMMARY

NUMBER OF DIGITAL TAPES USED DMTR 1 8
 DMTR 2 8

NUMBER OF VIDEO TAPES USED 2

SIGNIFICANT RECORDER DOWN TIME (other than for tape changes).

DMTR: LF 24 min
 NO
 TA 24 min

1912-1936Z
for LF change.

VTR: LF 24 min
 NO
 TA 24 min

OTHER PROBLEMS: (stabilization, interference, etc.)

AFC problems ^{LF} MTR SN-102 replaced SN 102
 SN-104
 AFC problem appear temp-dependent put it back & it worked

NHEML RADAR TAPE LOG

OCT 13 1983

FLIGHT 831013H AIRCRAFT 42RF

OPERATOR Frank Mauch SHEET 1 OF 1

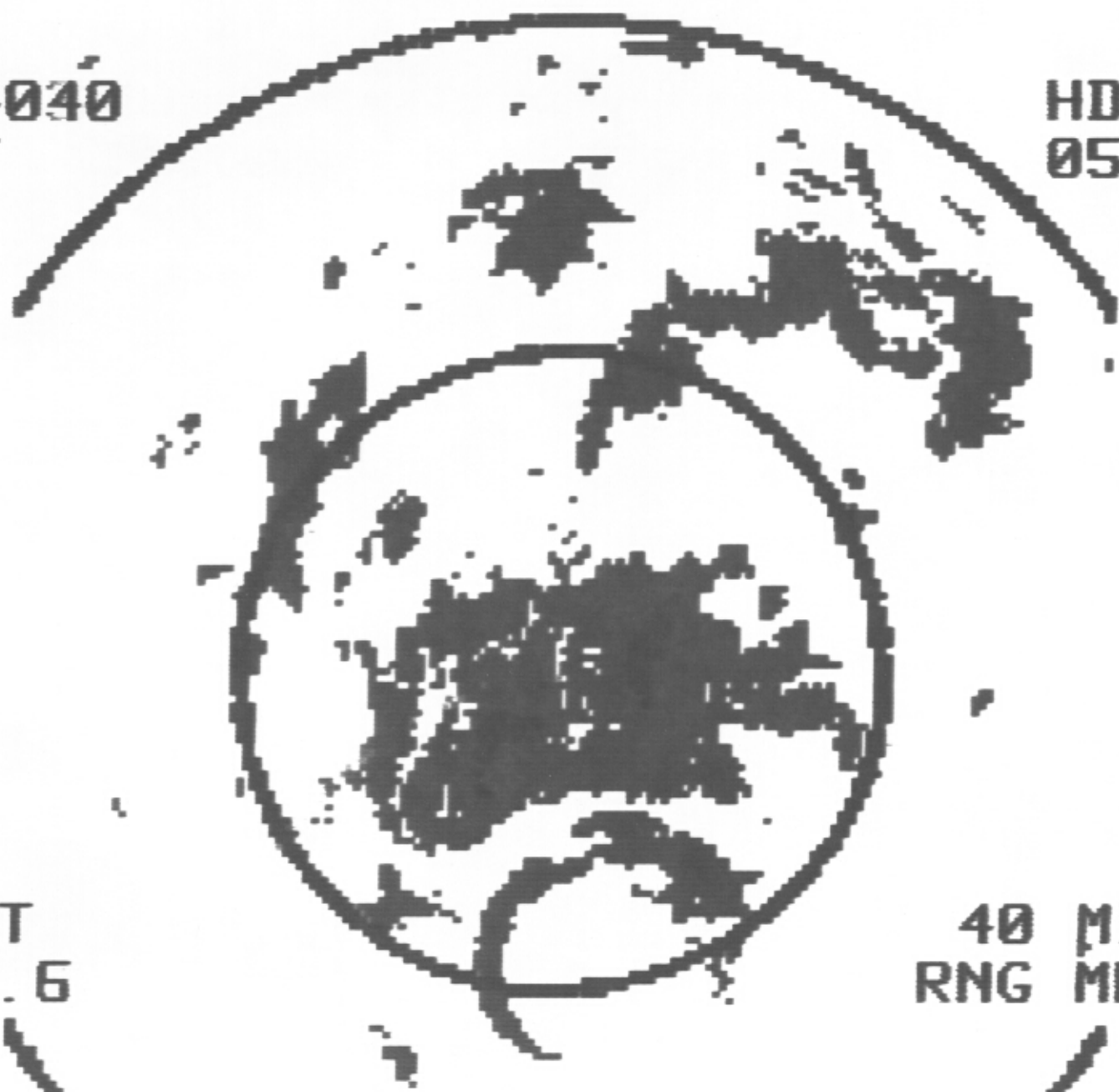
TAPE #	TIME ON	TIME OFF	SOURCE RADARS			REWOUND?		COMMENTS
			NO	TA	LF	YES	NO	
VCR1	153100	1946						
DIT1	154700				X	X		started ~150 km out picked up ^{small} eye ~120km
	155700	162124	X	X				
DIT1	162124	164940				X		on in eye 42ms ⁻¹
DIT2	164945	172220	X	X	X	X		1644 found STC was in there
DIT2	172224	174900	X	X	X	X		most of Tape 2-1 and all 1-
DIT3	175020	182030	X	X	X	X		shut it off at 1644 z
DIT3	182100	1848	X	X	X	X		on in the eye
DIT4	1855	1913	X	X		X	shut tape	descending to 1000' AFC problem - changed to ~1900 z
DIT4	193600	200440	X	X	X	X		1912 LF down stairs every other scan on TA ^{only} N to eye end of stairs
DIT5	200443	204230	X	X	X	X		
VCR2	194700							
DIT5	204233	2109	X	X	X	X		204943 down 2105 up 2109 off
DIT6	212135	214755	X	X	X	X		climbing to 20000' at 20000'
DIT6	214800	221615	X	X	X	X		heading 060°
DIT7	221618	2243	X	X	X	X		heading 150°
DIT7	224426	230940	X	X	X	X		down 6 and
DIT8	230944	233800	X	X	X	X		heading 060° ^{Bot}
DIT8	234012	000630	X	X	X	X		heading down ^{Bot} note

204040
L/F

HDG
050

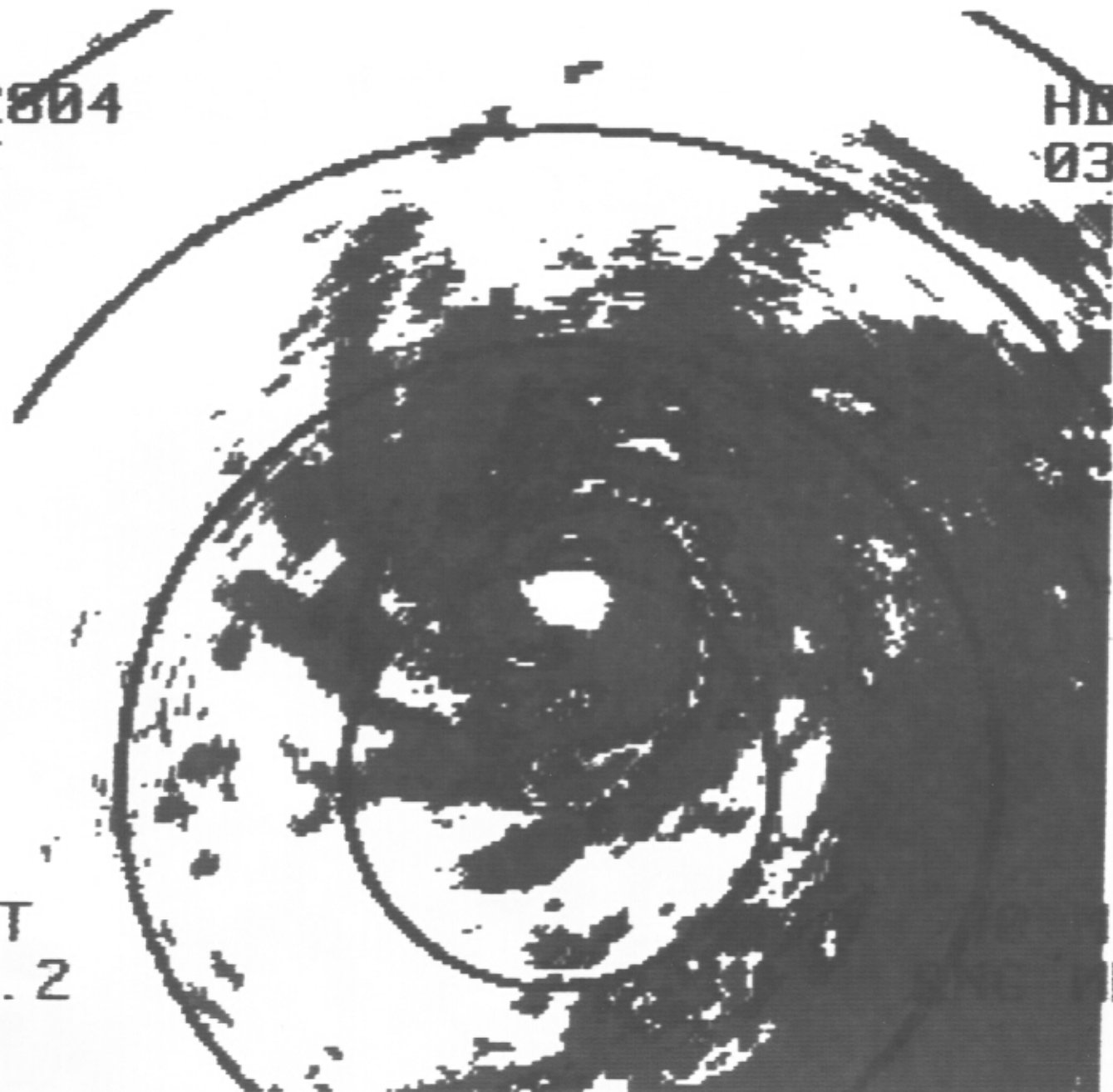
TILT
2.6

40 MI
RNG MK



212804
L/F

HBG
036



TILT
- 0.2

8
3
1
0
1
3
H

I
K

214503
L/F

HDG
867



8
3
1
0
1
3
H

TILT
- 0.9

MI
NG MK

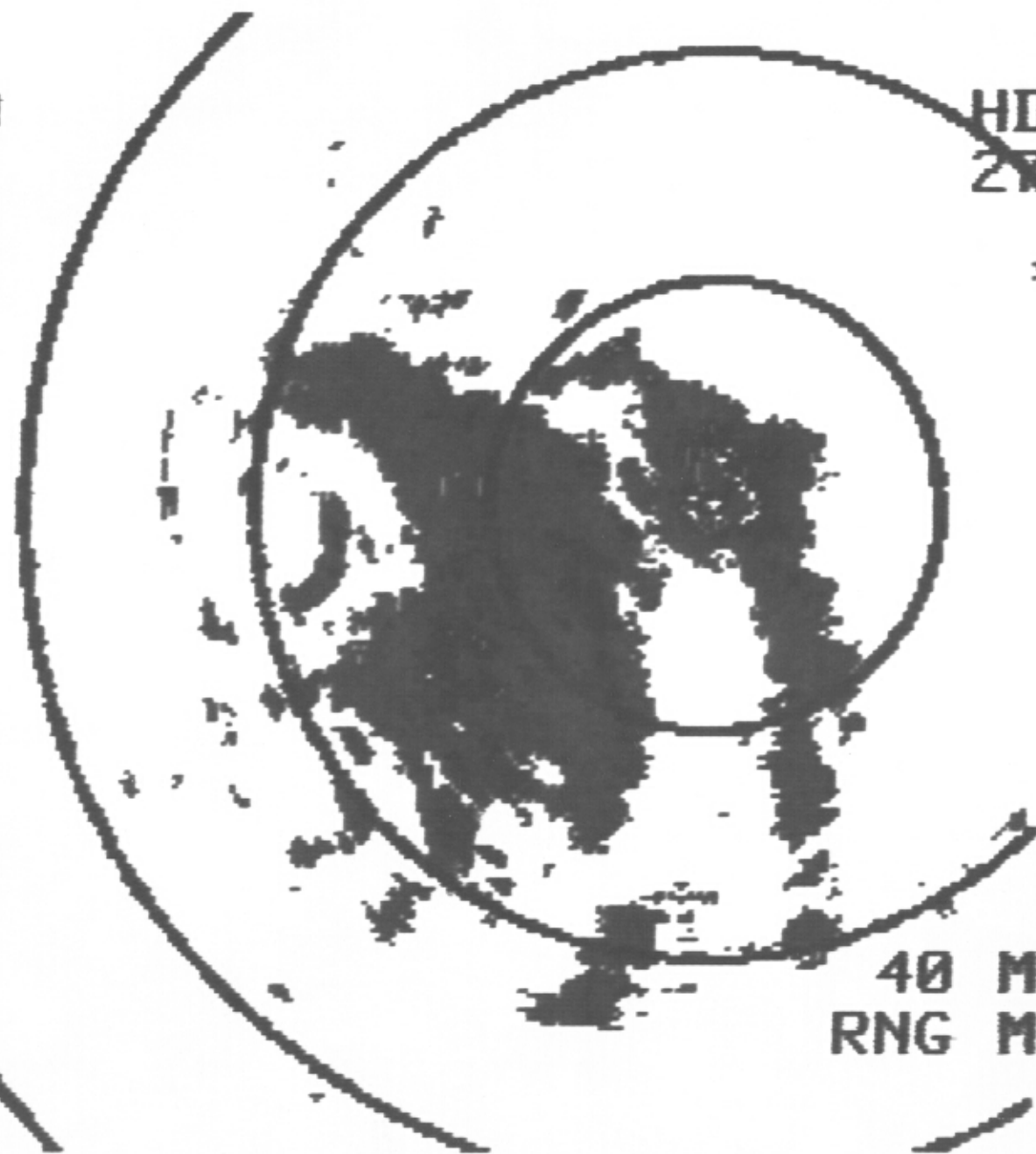
220550
L/F

HDG
287

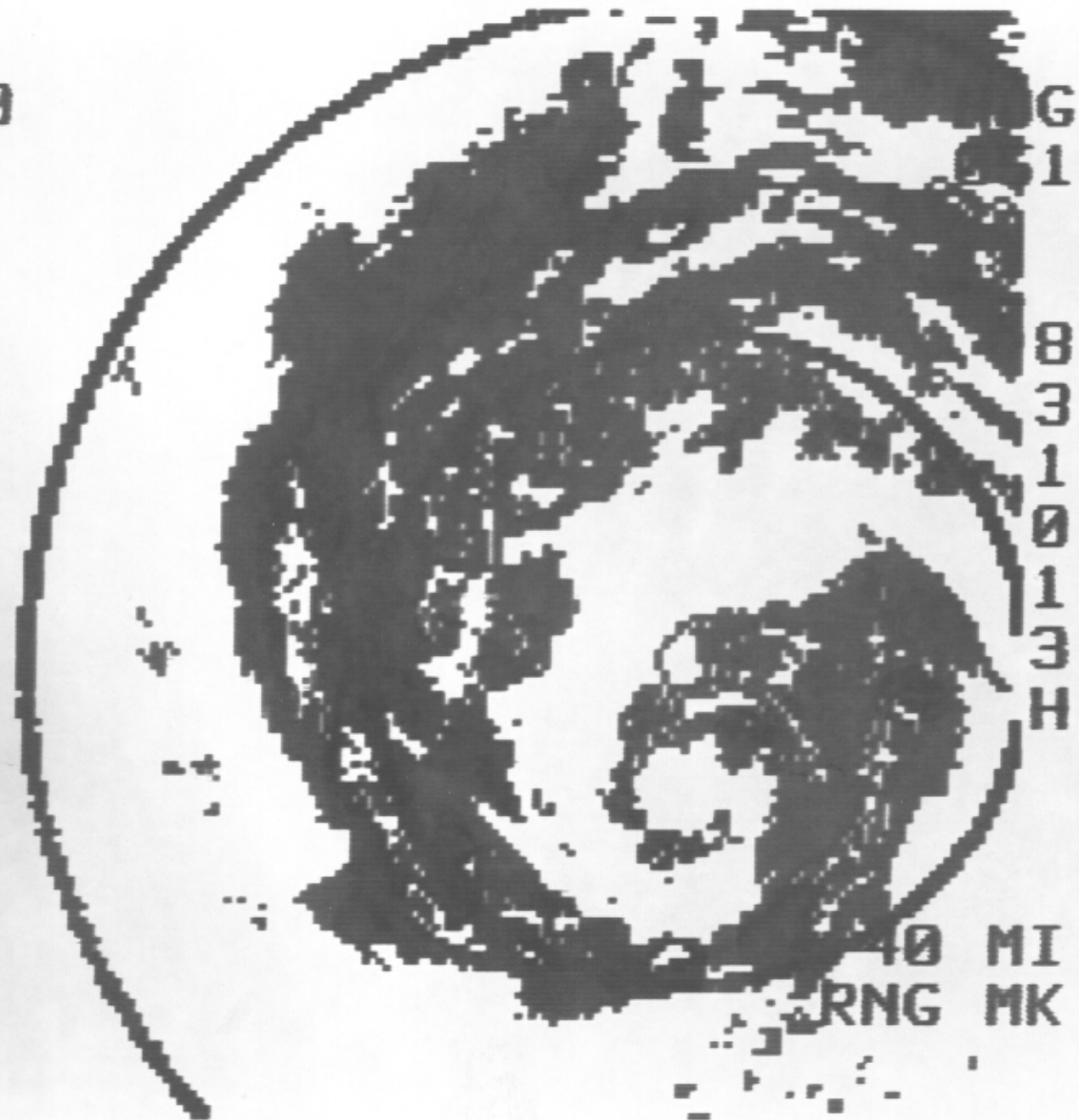
8
3
1
0
1
3
H

TILT
- 0.0

40 MI
RNG MK



235139
L/F



G
1

8
3
1
0
1
3
H

TILT
- 1.5

40 MI
RNG MK