

# NHRL DOPPLER RADAR TAPE LOG

FLIGHT 820914 I

AIRCRAFT 43RF

OPERATOR MARKS/PARR

SHEET 1 OF 1

TAPE #	TIME ON	TIME OFF	SOURCE			# PULSES	SCAN RATE	COMMENTS
			V	H	S			
1	194310	200205			X	32	MAX	300m gates going S-eye
2	200500	202230			X			
3	202339	204440			X			
4	205150	210647			X			
5	210937	212850			X			
6	213457	215200			X			
7	213550	221550			X			
8	221847	223600			X			
9	225955	231800			X			
10	233250	234540			X			
11	234935	000325			X			
12	000637	002500			X			
13	002800	003730			X			STOPPED TAPE IN EYE
13	004120	? 0044			X			RESTARTED AS WE APPROACH S. EYE WALL

T. S. Debby

820914 I I

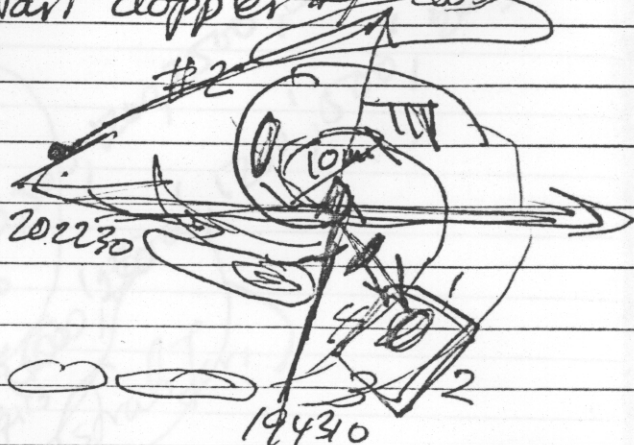
Doppler feasibility flight

194310 S → eye start doppler #1 2005  
390m → N

200205 #1 off

2005 heading SW

202230 #2 off



202539 #3 on heading E

204440 #3 off tracking 120

205150 #4 on start box ESE

205337 end of leg 1 ESE 70° turn

205434 start leg 2 SSW

205920 end leg 2 turn ~~SW~~ 90° turn

2100 start leg 3 ~~SW~~ 267

2102 end leg 3 turn NNW 90° turn

2103 start leg 4 heading <sup>trab</sup> 337

210647 end of tape ascend to 1500m

210937 1500m start leg 1 again tape 5 head 185°

211315 turn S do stair steps 185 heading

2114 start 500' run

211550 descend to 2500'

211730 start 2500' run heading south

211905 descend to 1800' heading south

212020 start 1200' run south S

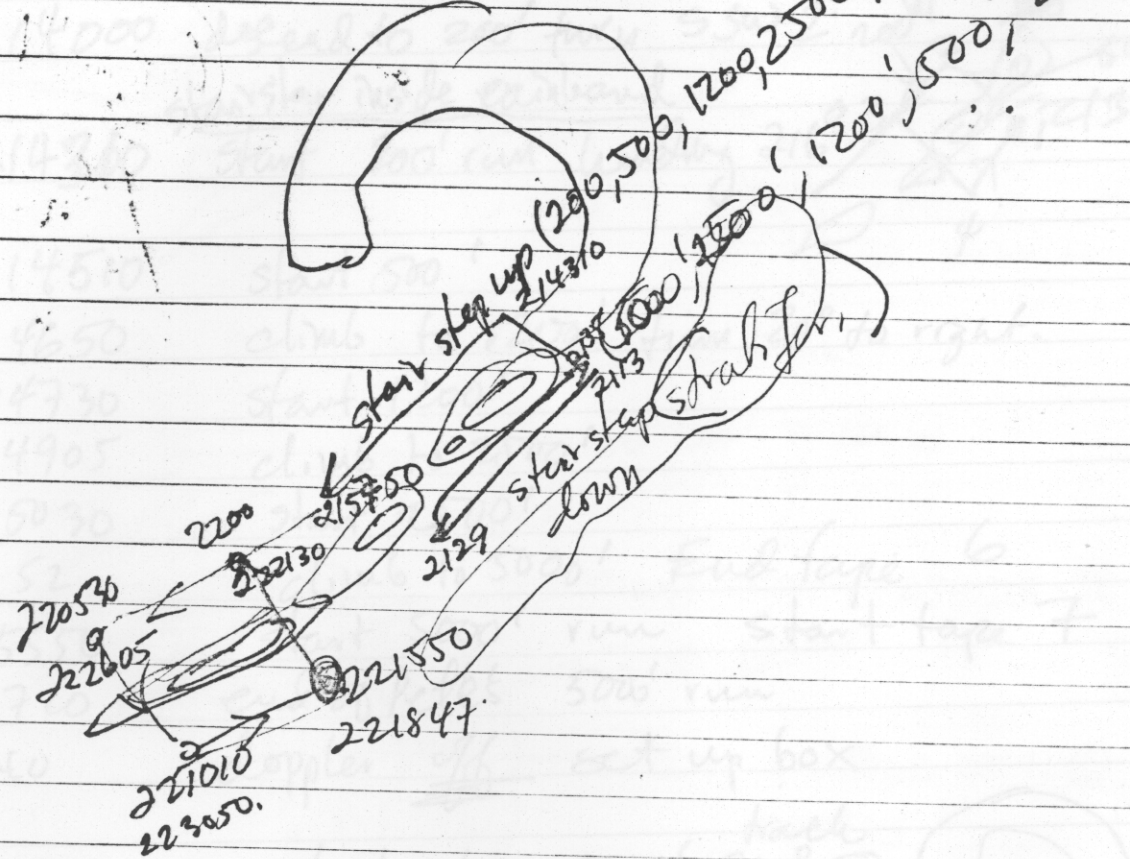
212400 start 500' run

212600 descend to 200' heading SW

212740 200' run Goddard Peter Black



820914 J1  
212857 start tape #  
213500 turn left 90°  
214000  
214500  
214850  
214730  
214905  
215030  
215150  
215250  
215500  
216010  
216530  
217010  
217110  
217550  
218010  
218530  
219010  
219110  
219550  
220010  
220530  
221010  
221110  
221550  
221947  
222130  
222605  
223057  
223600



820914 J1

213451 start tape #6

213500 turn left 90° heading 300°  
500'

214000 descend to 200' turn SSW 2. red  
stairstep inside rainband

214300 start 200' run heading 216°  
300'

214510 start 500'

214650 climb to 1200' turn 20° to right.

214730 start 1200'

214905 climb to 2500'

215030 start 2500'

2152 climb to 5000' End tape 6

215550 start 5000' run start tape 7

215720 end of pellets 5000' run

215740 doppler ~~off~~ set up box

220010 start box 5000' 210° ①

220530 turn 90° to track 142° ②

221010 turn 90°

221110 heading track 046 ③

221550 end tape 7 descend to 1500'  
heading 370°

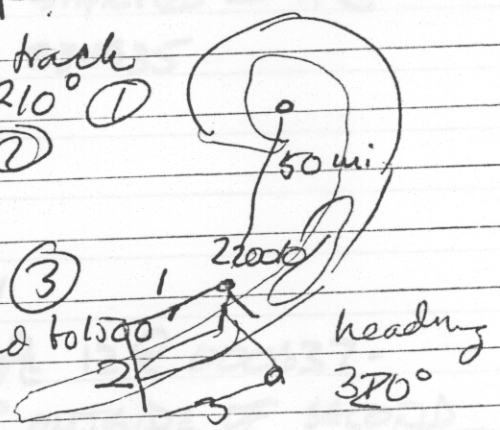
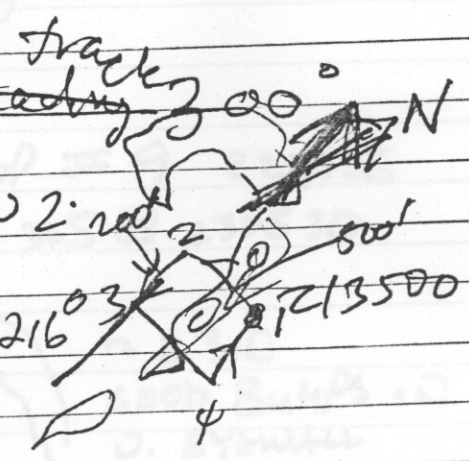
221847 1500' box start tape 8 track 325°

222130 turn 90° to track 235°

222605 turn 90° to track 145°

223050 turn 90° to track 055°

223600 head for the eye Whopee!!! end tape #8  
end 1500' box head for the eye

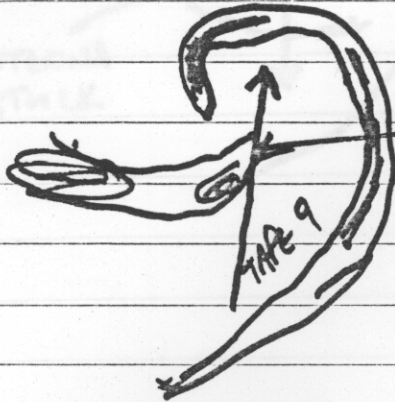




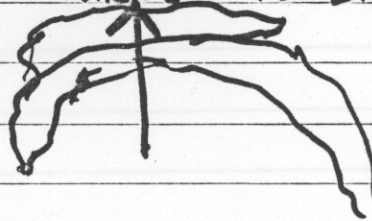
820914T1

Hurricane Debby

#3

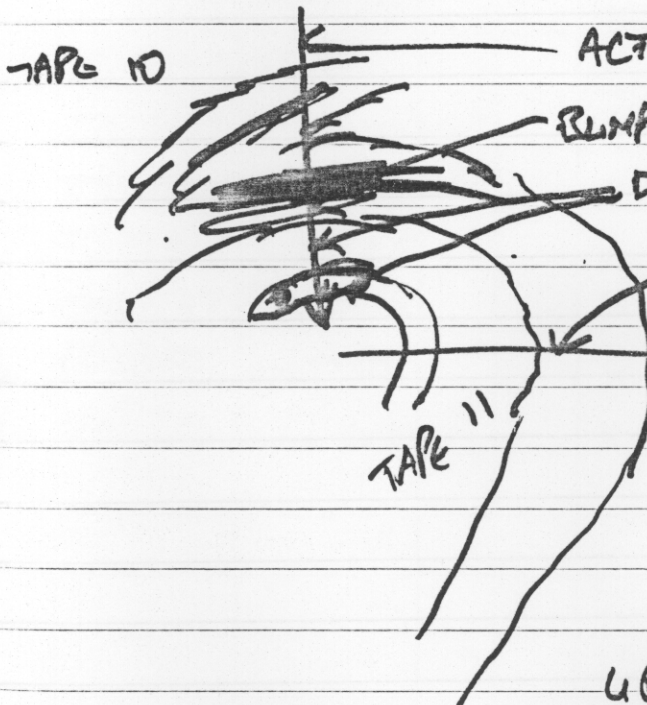


STARTED DOP # 9 225955  
 TURNED TO 345 @ 230530



~ 2310  
 GOOD BUMPS IN  
 D. EYEWALL

STOPPED REC WHILE D. OF EYEWALL



ACTIVATED DOP # 10 @  
 233250

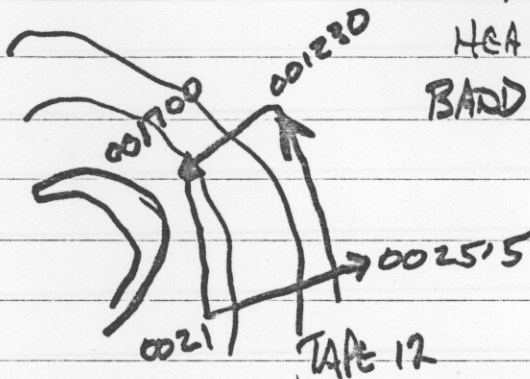
BUMPY

DOWNRIGHT CHOPPY 234015-30

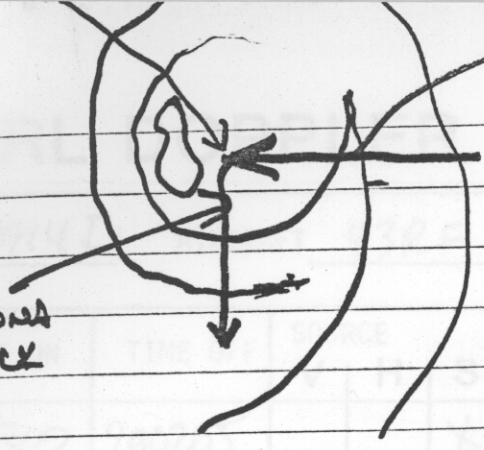
D-6 BUMP

STARTED # 11 @  
 234935

UP TO 5000'  
 STARTED TAPE 12 @ 000637 -  
 HEADING UP OUTSIDE OF SECOND  
 BAND



ANTENNA  
STUCK



START #13 @

2 004230 TAIL ANTENNA  
STEPPED