

RADAR PREFLIGHT CHECKLIST

AUG 9 1980

FLIGHT # 800809H

A.C. # 422F

OPERATOR PAZZISH

RADAR TECH SIMMS

NUMBER OF DIGITAL MAGNETIC TAPES ONBOARD 15+

NUMBER OF VIDEO TAPES ONBOARD —

NUMBER OF TAPE LABELS ON BOARD 15+

COMPONENT SYSTEMS UP AND CHECKED.

RDSC ✓
COMPUTER ✓
DMTR1 ✓
DMTR2 ✓

VTR ✓
DSC1 ✓
DSC2 ✓
SCOPES ✓

NO ✓
LF ✓
TA ✓

Time correction between radar time and digital time + 1 sec

RADAR POSTFLIGHT SUMMARY

NUMBER OF DIGITAL TAPES USED DMTR 1 4
DMTR 2 4

NUMBER OF VIDEO TAPES USED 0

SIGNIFICANT RECORDER DOWN TIME (other than for tape changes).

DMTR: LF _____
NO _____
TA _____

VTR: LF _____
NO _____
TA _____

OTHER PROBLEMS: (stabilization, interference, etc.)

INTEML RADAR TAPE LOG

AUG 9 1960

FLIGHT 800809H AIRCRAFT 42RF OPERATOR PAZIRISH SHEET 1 OF 2

TAPE #	TIME ON	TIME OFF	SOURCE RADARS			REWOUND?		COMMENTS
			NO	TA	LF	YES	NO	
1-1	235510	003120			✓			000700 - ASSUMED CONTROL OF LF RADAR - SPOKING ON DIGITAL DISPLAY
								SHUT OFF TAPE - ICE WOUND TO SEE IF SPOKING IS GOING ON TAPE - IT IS.
								003400 - RESTARTED PROGRAM IN ATTEMPT TO STOP SPOKING. DIDN'T WORK.
1-1	004900	012810			✓	✓		003430 - RELOADED PROGRAM - SPOKING SLOWLY DISSIPATED DURING NEXT HOUR.
2-1	012813	020820			✓			SHORT PAUSE TO START
2-1	020824	022330	✓	✓		✓		RECORDING TAIL RADAR
1-2	022333	031510	✓	✓				~0200 - SWITCHING CONTROL OF LF RADAR FROM DAW TO ME & BACK - CLOSE TO LAND
2-2	031514	040900	✓?	✓				FLYING AT 10K - AVERAGE TILT +15
								0350 - WESTERN EYEWALL ON COAST - EYE DIAMETER ~10 MI
								* APPARENT LOSS OF TAIL RADAR DATA ON TAPE 2-2 - LIGHT DOT ON ON CONTROLLER - DAMN!!
1-3	040905	045930	✓	✓				
2-3	045933	054820	✓	✓				~0515 - EYE CENTERED OVER COAST ON RADAR
1-4	054823	064204	✓	✓		✓		~0600Z - AL. PASSED ABOUT 10 MILES EAST OF LAND FALLEN EYE
								14 I+T. EOT, PROBABLY AROUND 0640
								EYE ABOUT 5-6 MILES ACROSS AND CLOSED, BUT STILL STRONGEST TO NORTH

INHEMIL RADAR TAPE LOG

AUG 9 1980

FLIGHT 00809H

AIRCRAFT 422F

OPERATOR PARRISH

SHEET 2 OF 2

TAPE #	TIME ON	TIME OFF	SOURCE RADARS			REWOUND?		COMMENTS
			NO	TA	LF	YES	NO	
								206322 - EYE ALMOST COMPLETELY ASHORE. - LASTED EYE-WALL ADJACENT TO BEACH.
2-4	06420F	071610		✓	✓			SHORT PAUSE TO STOP
2-4	071613	074100			✓			RECORDING TAIL RADAR
								→ NOTHING TO RECORD ON LF - OUT OF RANGE
2-4	091215	~092000			✓			✓ RAD LAST FEW MINUTES OF 2-4 WITH GOOD LAND PRIOR OF FLORIDA - NAV HAS LF RADAR CONTROL
	2-4	HIT EOT						
<p>GOODBYE, ALLEN. IT'S BEEN A LONG WEEK.</p> <p style="font-size: 2em; margin: 0;">WV</p>								

AUG 9 1980

AUG 9 1980

OPERATOR PARRISH

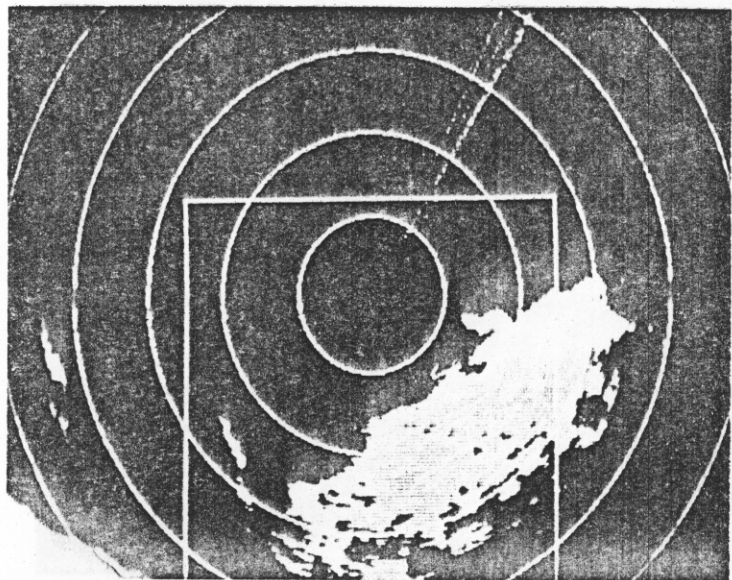
SHEET 1 OF

NHEML RADAR LOG

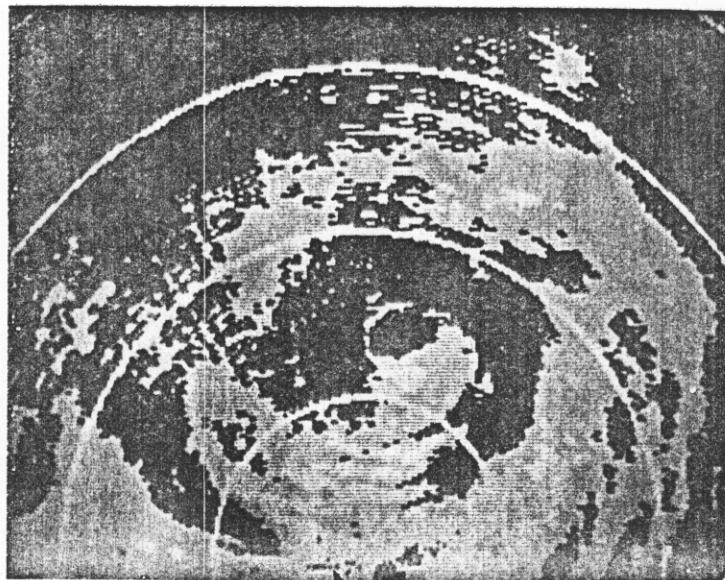
RADAR DOWN-TIME LOG

<u>ITEM</u>	<u>TIME DOWN</u>	<u>TIME UP</u>	<u>PROBLEM</u>
COMP, DSC 1, DSC 2	071716	2022100	RECENT COMPUTER RADAR SYSTEM DOWN - APPARENTLY STRUCK (AGAIN) BY LIGHTNING.
			PERIODIC SPORING ON DIGITAL DISPLAY, ALSO BEING RECORDED. DID NOT SEE IT ON THE ANALOG SCOPE.

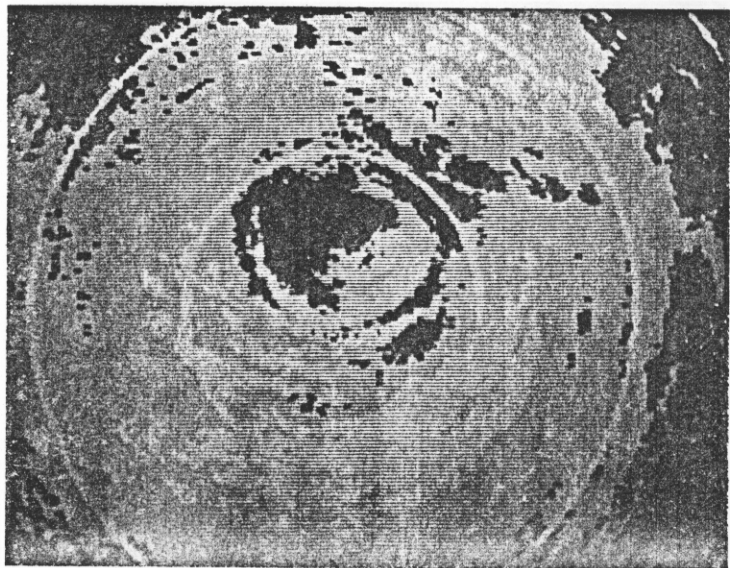
ITEM LIST: VTR, DMTR1, DMTR2, COMP, ROSC, LF, NO, TA, DSCI, DSC2



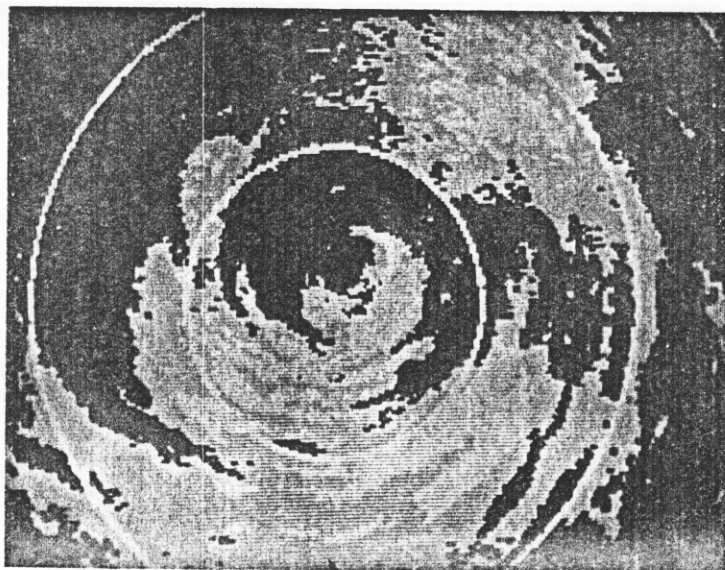
001118/275.2/+0.5 FLORIDA-SPORING ON
DIGITAL DISPLAY



022650/253.2/2X



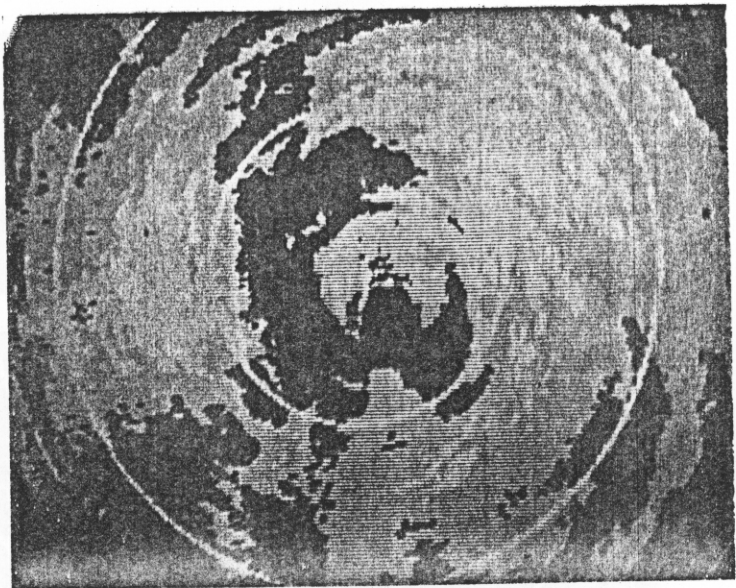
023350/246.1/2X



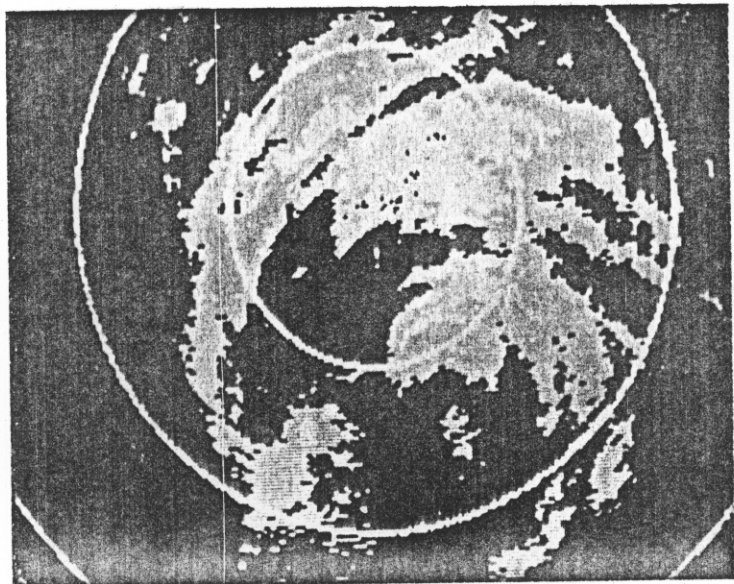
023640/+1.5/2X

42RF

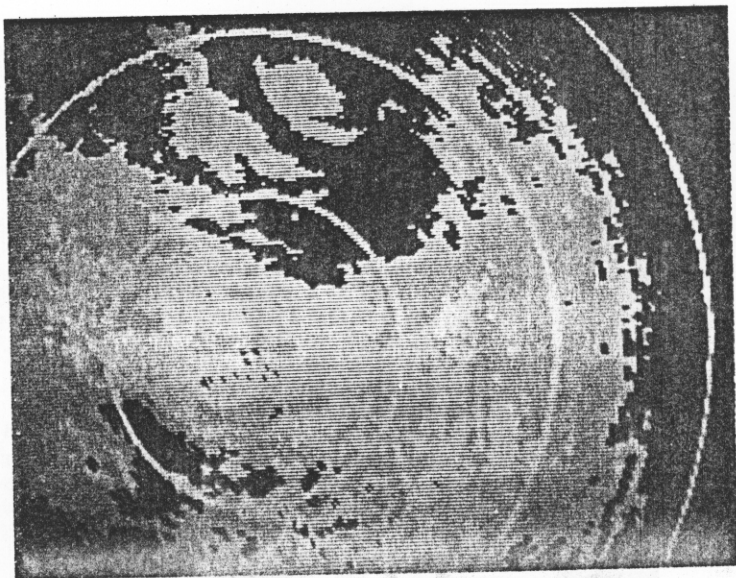
800809H (1)



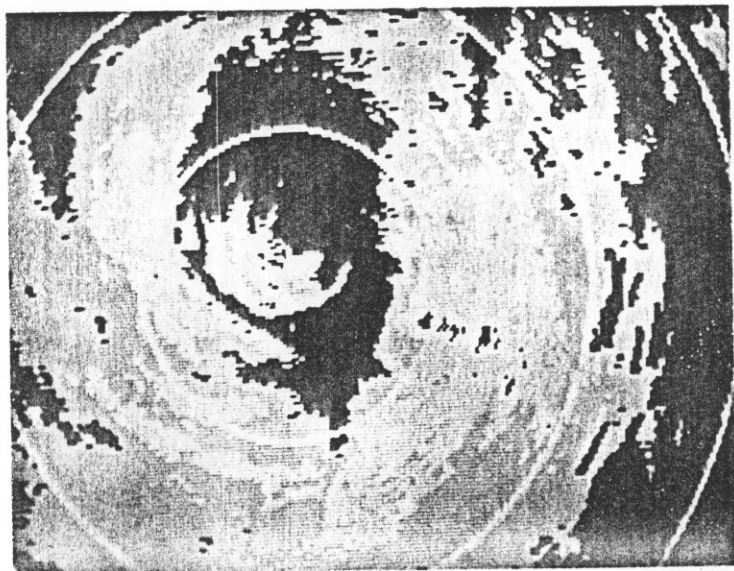
024225/15.0/+1.5/2X AFTER 1ST
PENETRATION



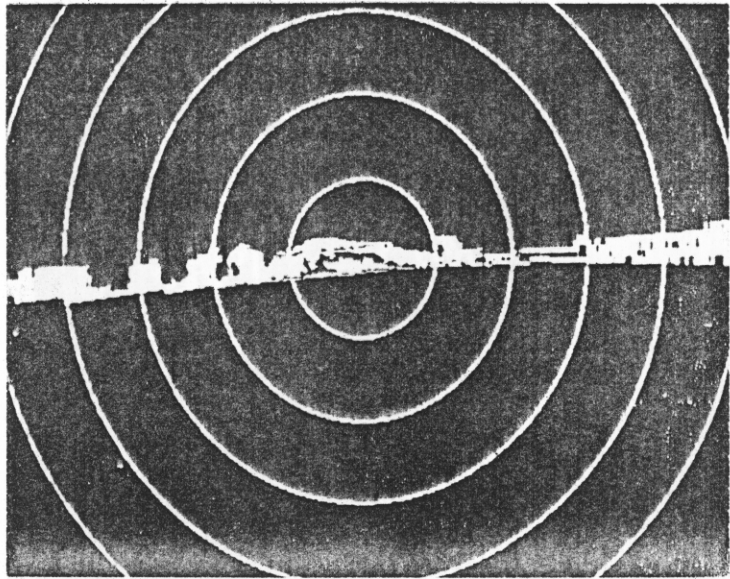
025115/19.2/+2.0/2X



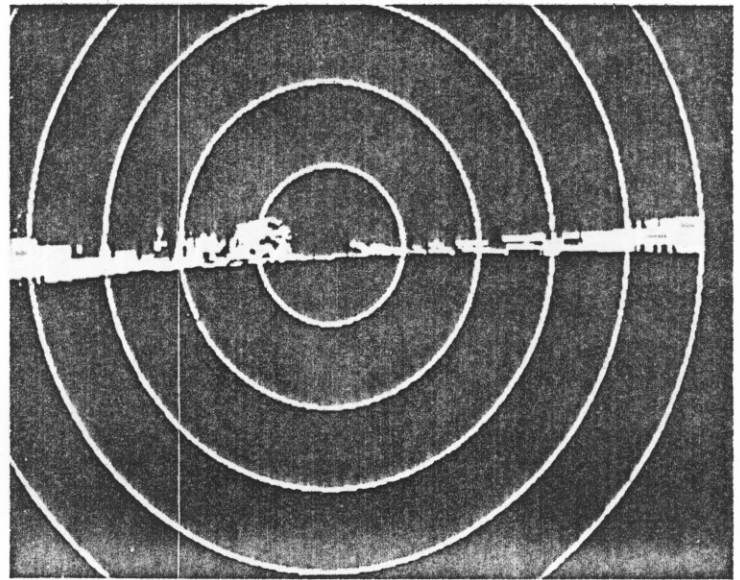
034325/167.1/+1.0/2X EYE VALUE -
ABOUT 80 MILES OUT



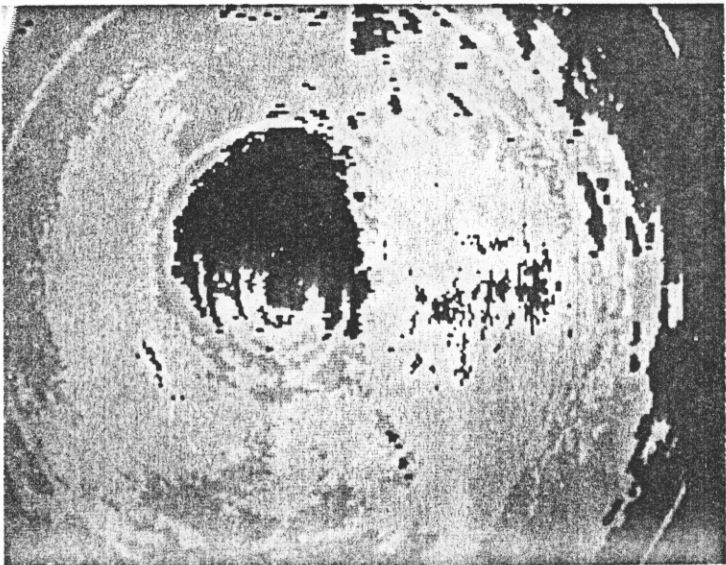
800809H(2) 035928/164.1/+1.5/2X



040018/194.0 GOING THRU THE
NORTH EYEWALL

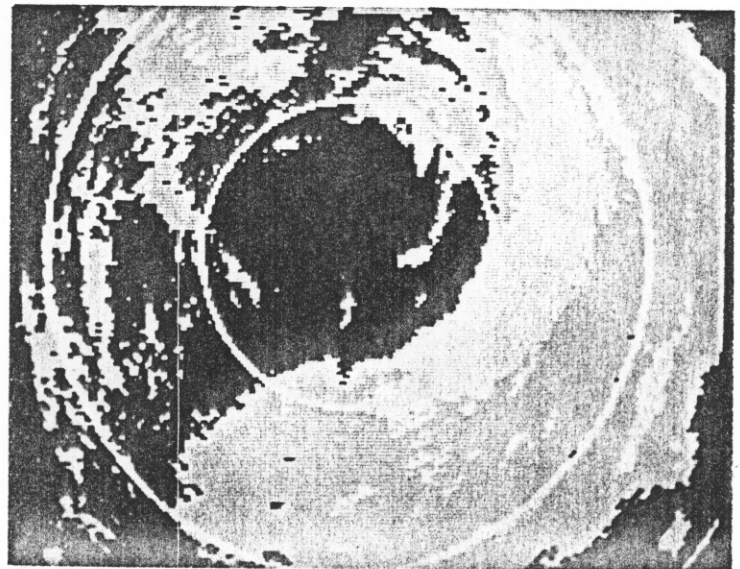


040300/196.0 IN THE EYE

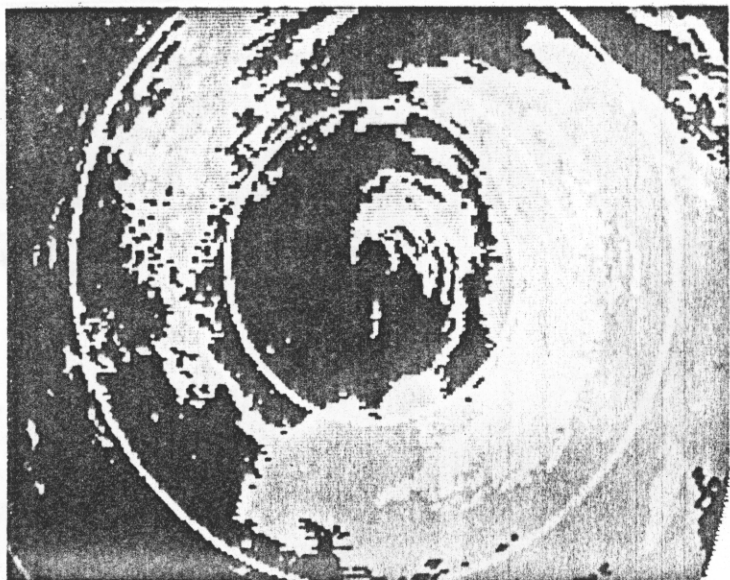


040415/195.8/+1.0/2X

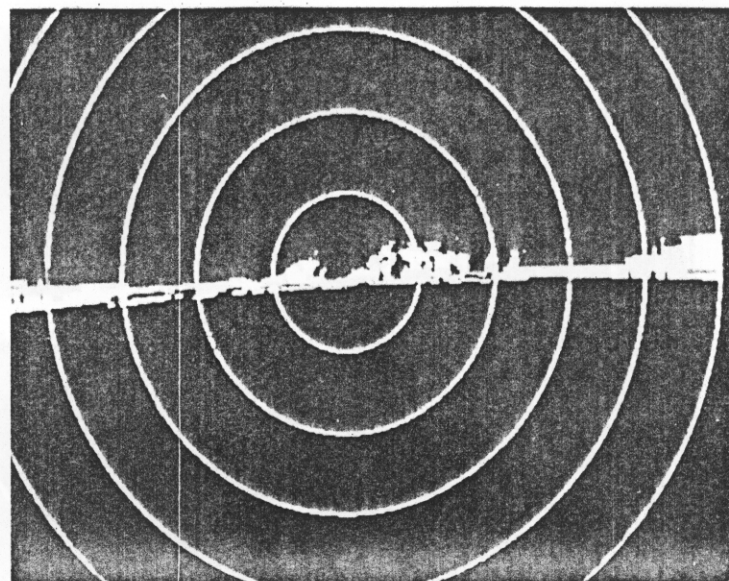
800909H(3)



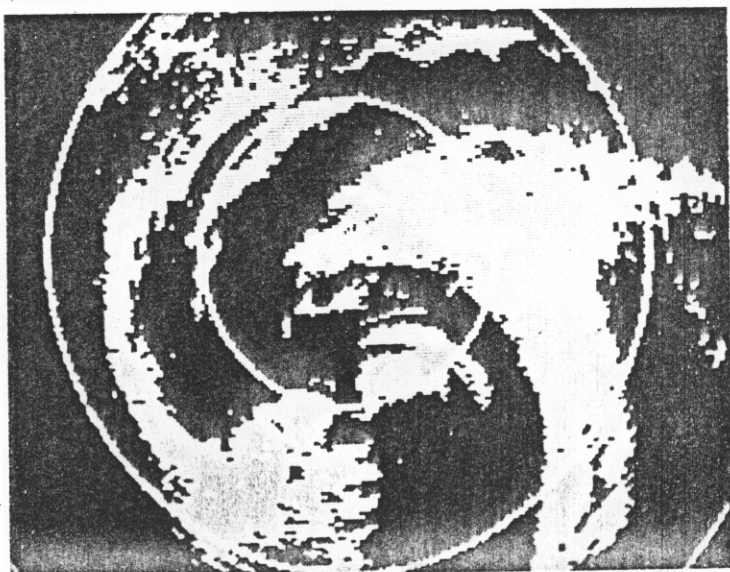
042815/347.6/+1.0/2X



043550/357.0/+1.5/2X
3RD PENETRATION - FROM SOUTH

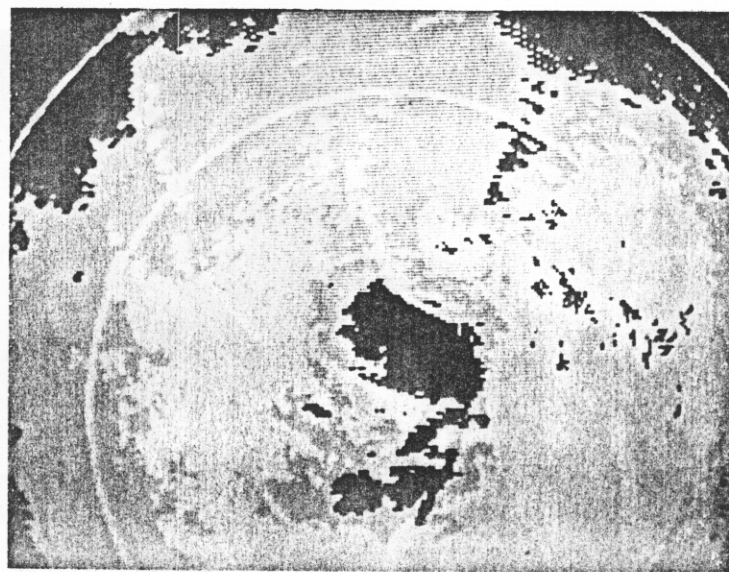


043650/15.0 GOING THRU EYE - LAST
PENETRATION INTO ALLEN

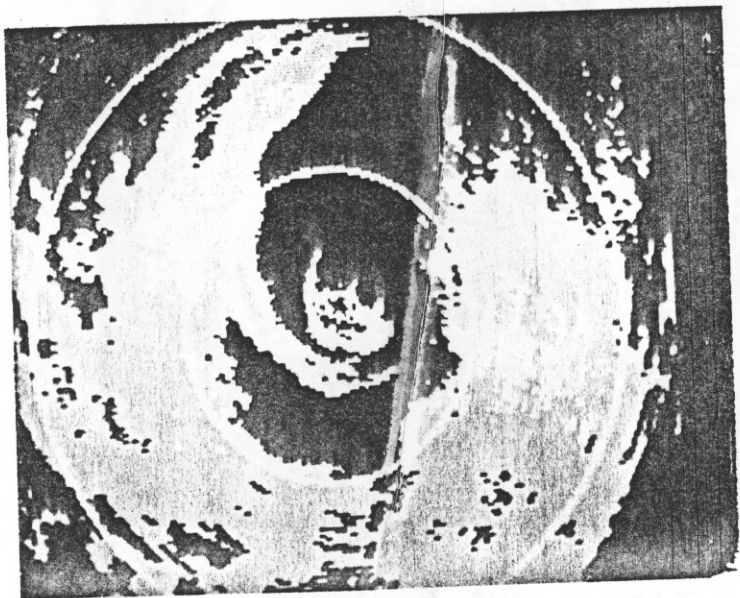


044645/22.2/+2.5/2X SOUTHERN
EYE WALL 200 - EXISTENT

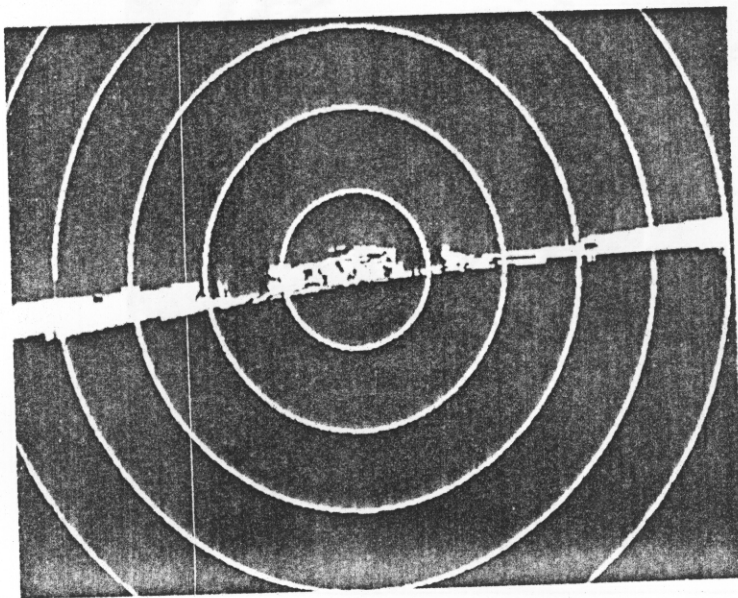
800809H (4)



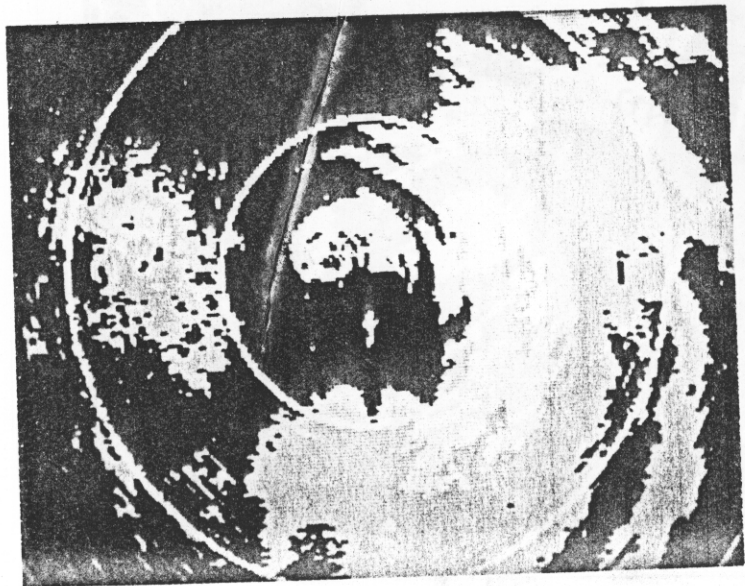
051420/159.0/+0.5/2X EYE SQUARELY OVER
LAND - NORTH EYEWALL APPROXIMATE THE COAST



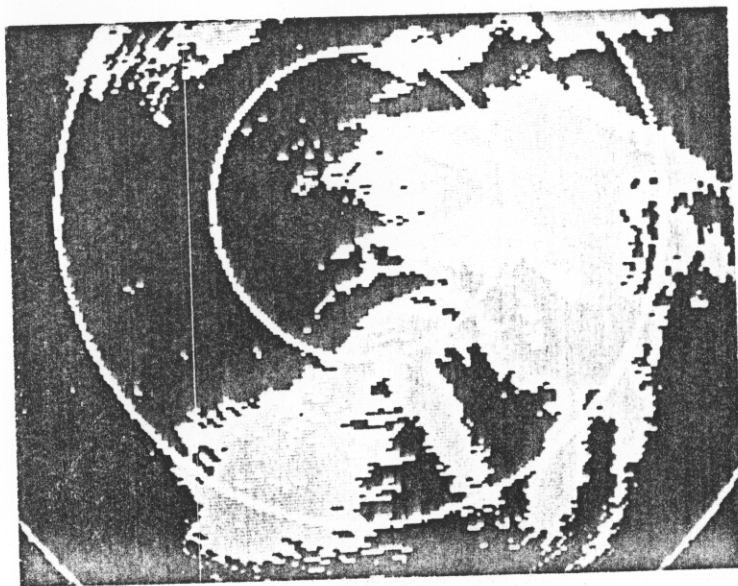
052545/169.0/+1.5



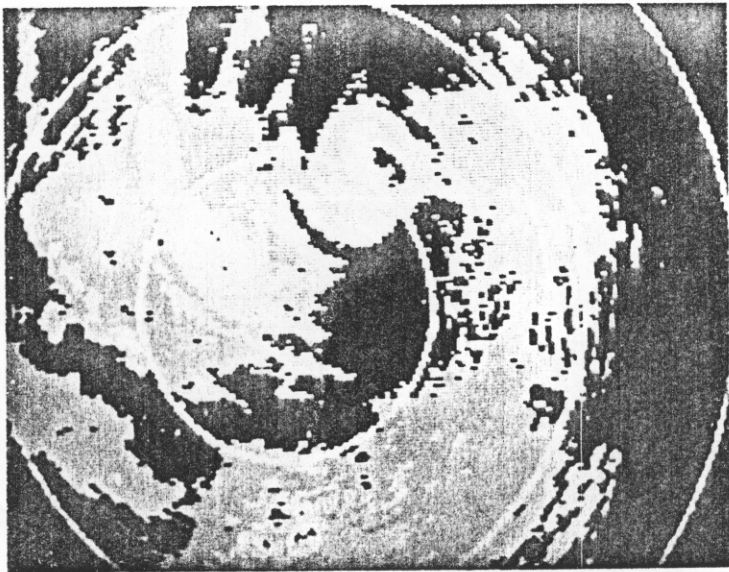
052830/180.0 PASSING THRU EAST EYEWALL -
EYE ON ISALM TO RIGHT OF CENTER



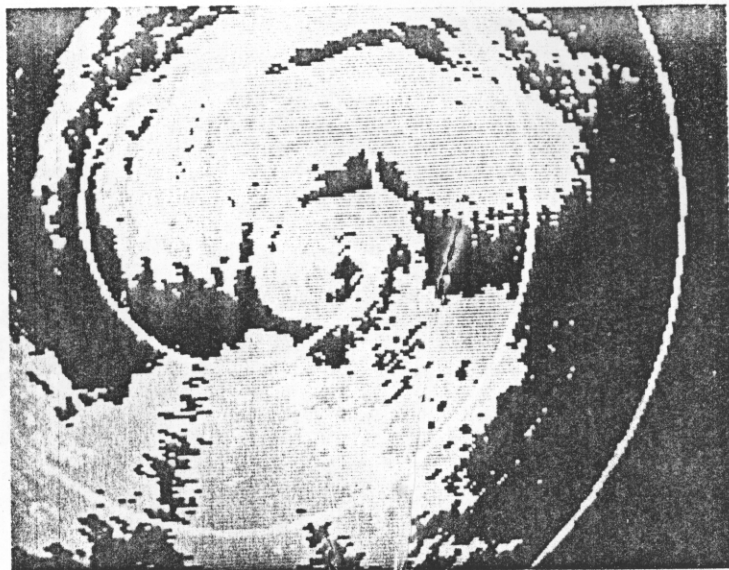
052545/169.0/+1.5



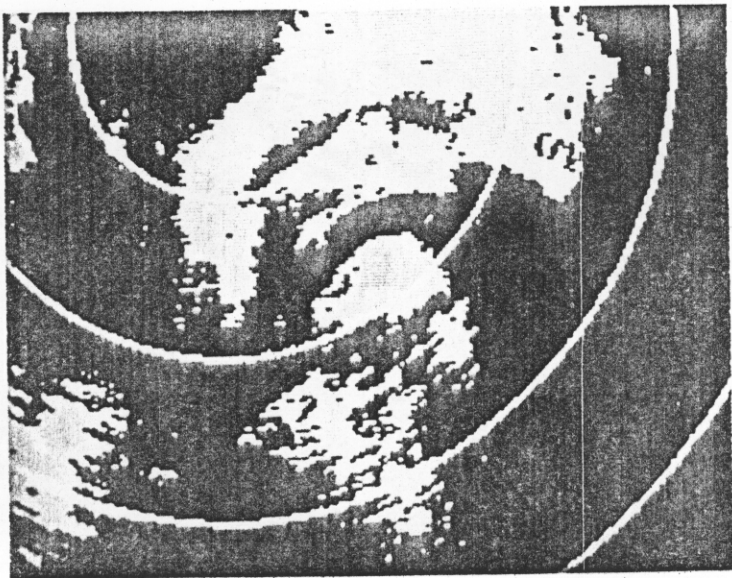
052830/180.0



063630/163.1/+2.0 EYE ALMOST
TOTALLY OVER LAND



064355/94/+1.5/2X



065825/104.2/+0.5/2X AS WE WERE
LANDING (100) 244 ALL (10)

800809H (6)