

RADAR PREFLIGHT CHECKLIST

FLIGHT # 800808H

A.C. # 42 RF

OPERATOR ARRISH

AUG 8 1980

RADAR TECH SIMMS

NUMBER OF DIGITAL MAGNETIC TAPES ONBOARD 15+

NUMBER OF VIDEO TAPES ONBOARD —

NUMBER OF TAPE LABELS ON BOARD 20+

COMPONENT SYSTEMS UP AND CHECKED.

RDSC —
COMPUTER —
DMTR1 —
DMTR2 —

VTR —
DSC1 —
DSC2 —
SCOPES —

NO —
LF —
TA —

Time correction between radar time and digital time 0

RADAR POSTFLIGHT SUMMARY

NUMBER OF DIGITAL TAPES USED DMTR 1 4
DMTR 2 4

NUMBER OF VIDEO TAPES USED —

SIGNIFICANT RECORDER DOWN TIME (other than for tape changes).

DMTR: LF _____
NO _____
TA _____

VTR: LF _____
NO _____
TA _____

OTHER PROBLEMS: (stabilization, interference, etc.)

NHEML RADAR TAPE LOG

AUG 8 1980

FLIGHT 800808H

AIRCRAFT 42RF

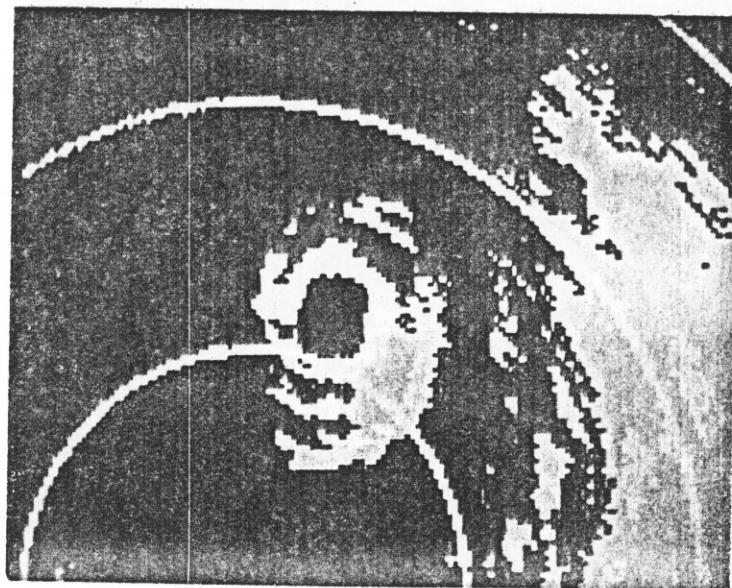
OPERATOR PARRISH

SHEET 1 OF 1

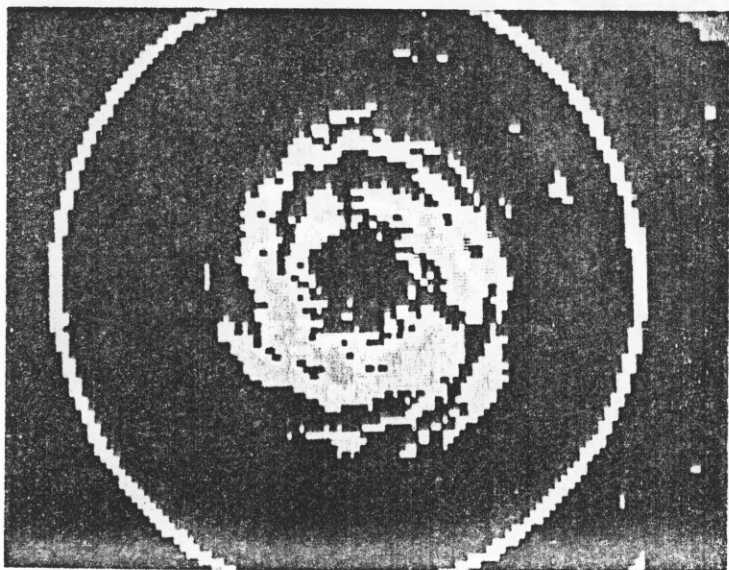
TAPE #	TIME ON	TIME OFF	SOURCE RADARS			REWOUND?		COMMENTS
			NO	TA	LF	YES	NO	
1-1	170030	~182000			✓		✓	PAINTING FLORIDA ON WAY OUT
	1-1 HIT	EOT -						170330 (TILT 0) / 170400 (TILT +1.0)
	NOTHING TO RECORD							170430 (TILT +2.0) / 170500 (TILT +3.0)
								170530 (TILT +4.0) / 170600 (TILT +5.0)
								170600 (TILT +6.0) / 170700 (BACK TO +2)
2-1	182318	190100			✓			
2-1	190104	191430		✓	✓		✓	SHORT STOP TO PICK UP TAIL RADAR
1-2	191433	200605		✓	✓		✓	DISTINCTIVE RAIN FREE AREA, ~60 MILES WIDE, BETWEEN EYE WALL & NEXT RAIN BAND
2-2	200608	205226		✓	✓		✓	
1-3	205230	213950		✓	✓		✓	
2-3	213950	222930		✓	✓		✓	~2205Z - SPORATIC BARRAGE COMING FROM AIRCRAFT EXTERIOR AFTER OUTBOUND TRIP THRU. EYE WALL - SEEMS TO BE BEHIND RADAR STATION (ME)
								~2225Z - SECURED FROM INTERCOM HEADING BACK TO MIAMI WITH BROKEN PLANE.
1-4	222933	230300		✓	✓			
1-4	230302	~233000	EOT		✓		✓	PAUSE TO STOP RECORDING TAIL RADAR
2-4	233433	003410			✓		✓	PAINTING FLORIDA, KEYS
								002730 - TILT -1
								002830 - TILT 0
								002930 - TILT +1
								003030 - TILT BACK TO 0



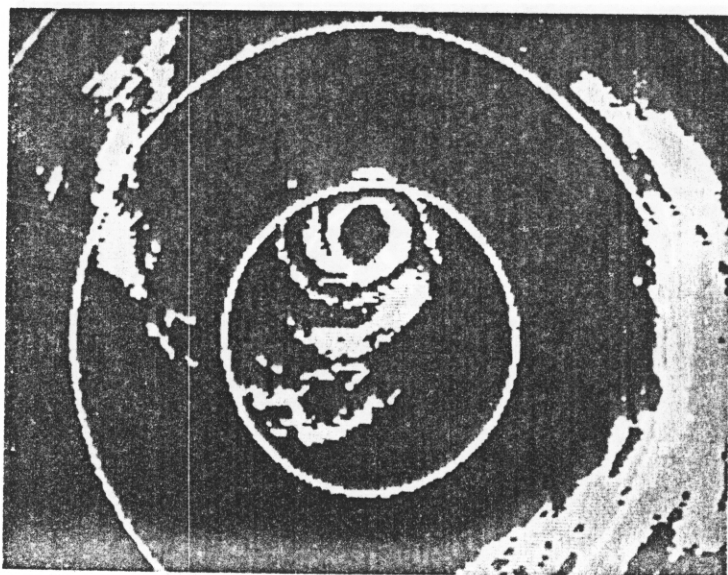
190215/282.5/+0.5



191150/283.5/+0.5/3x

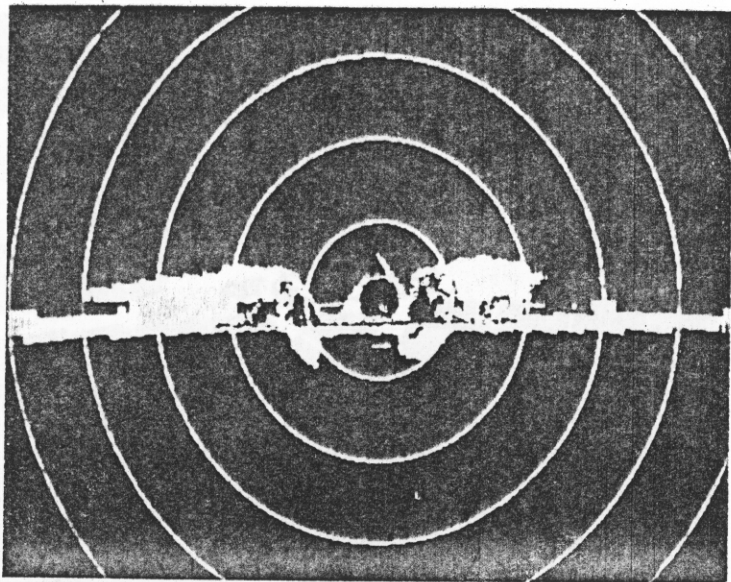


192234/299.7/+1.5/4x

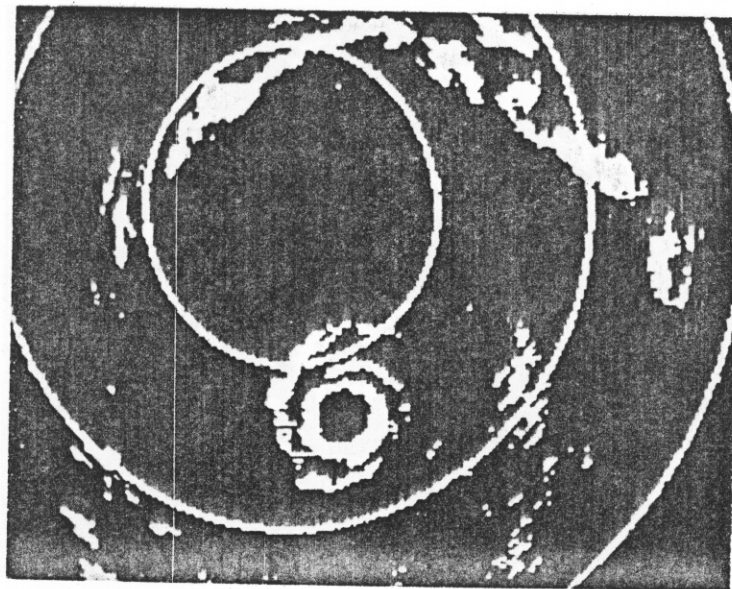


194453/101.0/+0.5/2x

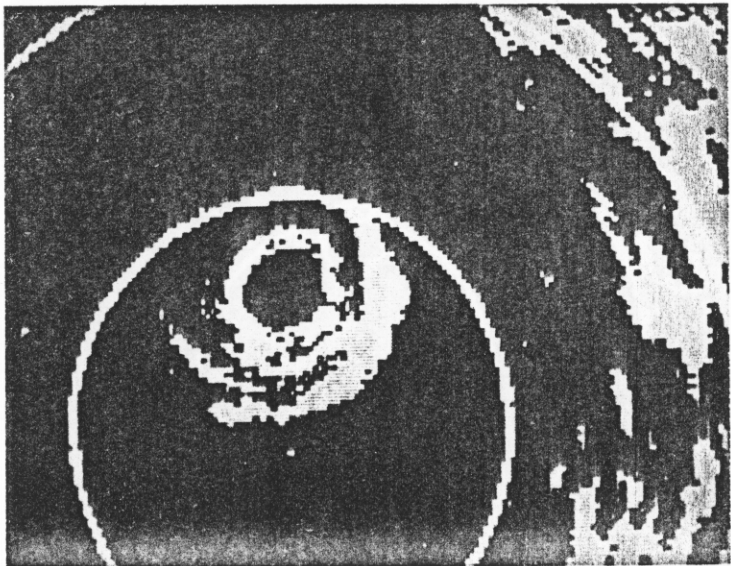
42ZF
800808H (1)



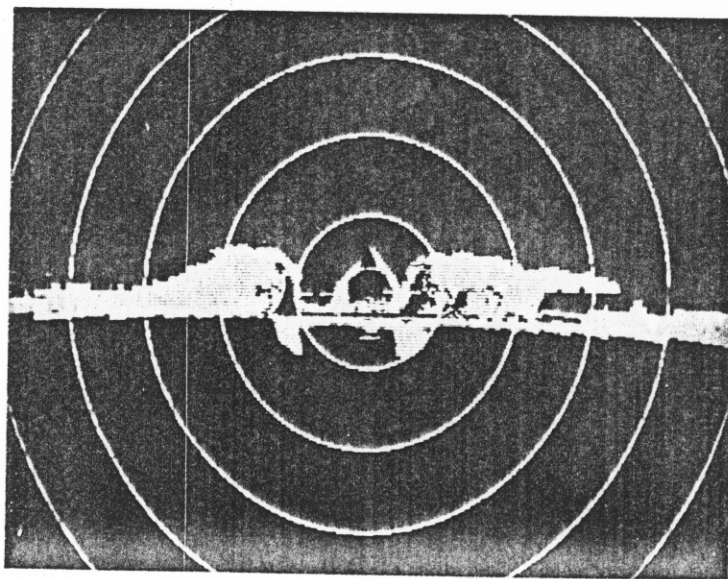
195000 / 85.0



200406 / 209.7 / +1.5 / 2X

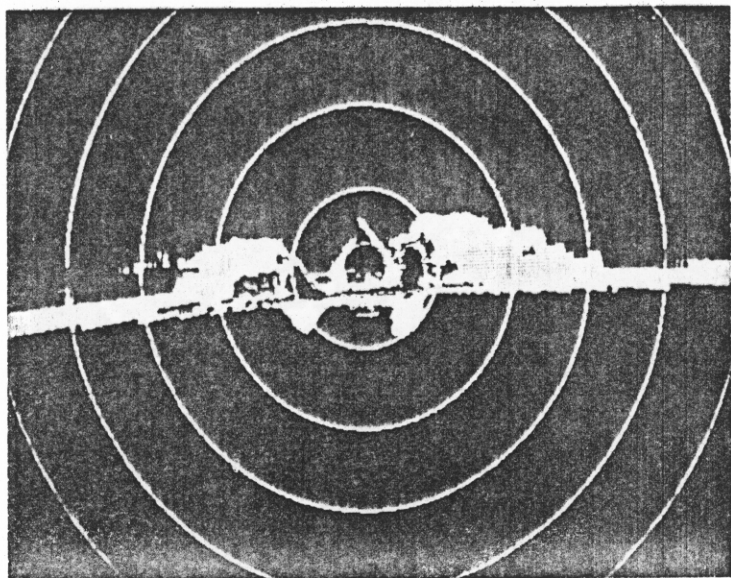


201820 / 5.9 / +1.0 / 3X

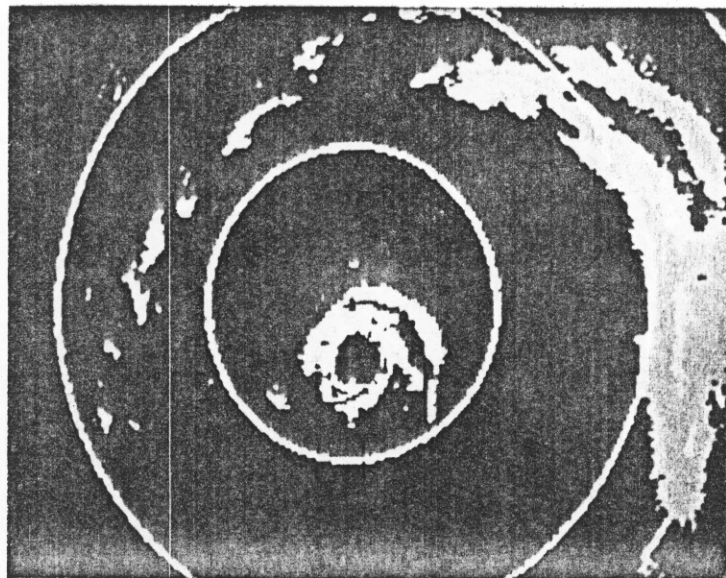


202255 / 340

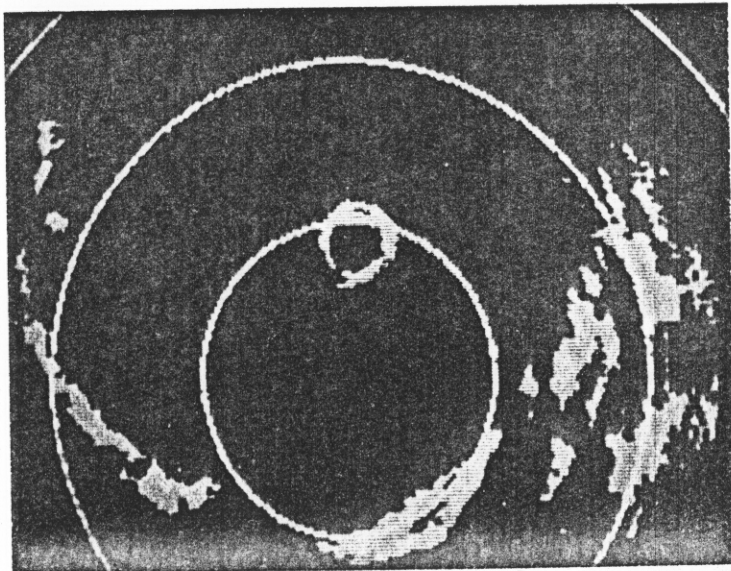
800808H (2)



205305/188.0
ALTITUDE - 5256 METERS

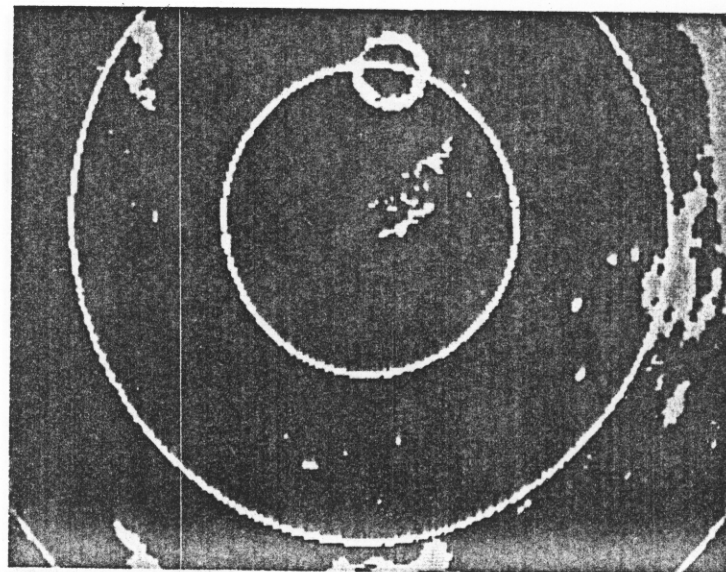


205655/126.7/+1.0/2X

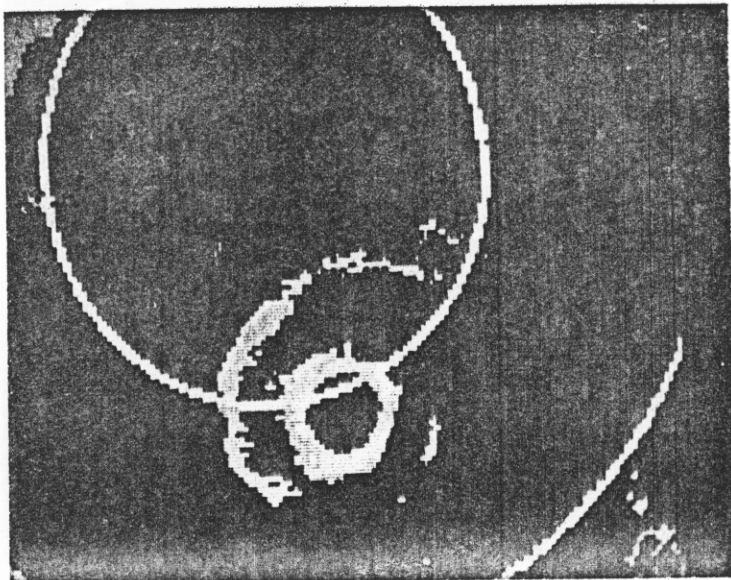


212525/282.0/+1.0/2X

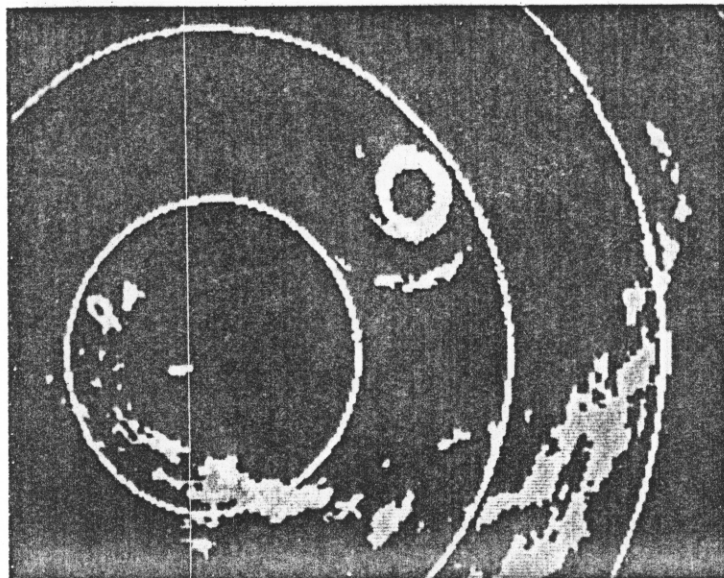
800808H(3)



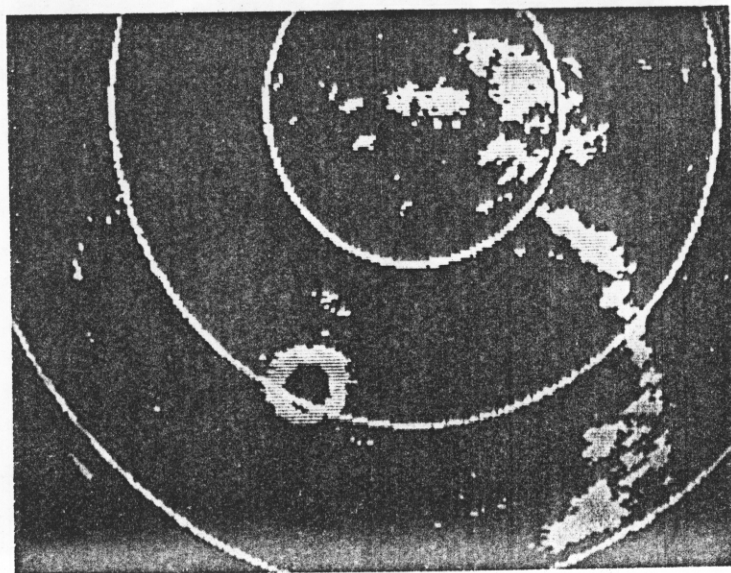
215240/101.4/+1.0/2X



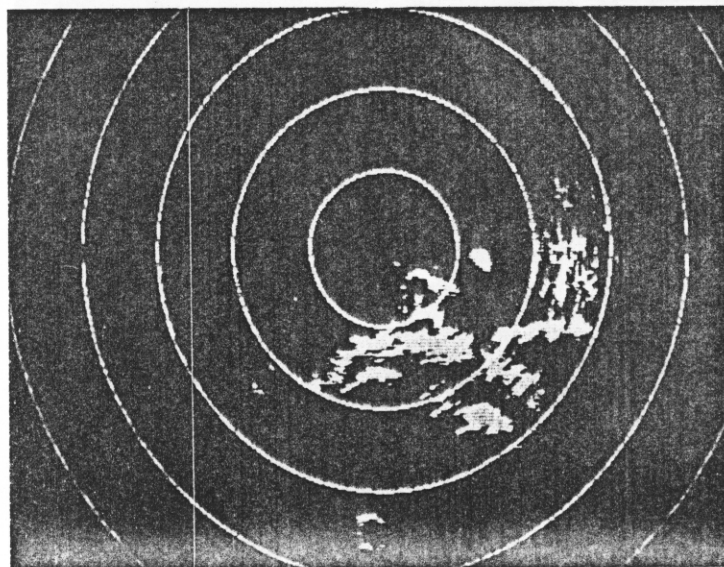
221030/208.6/+1.0/3x



222316/317.5/+1.0/2x



224630/80.6/+1.0/2x



800808H(4)

225947/87.9/+0.5 WHILE RETREATING