

NHEML RADAR TAPE LOG

AUG 6 1980

FLIGHT 800806H AIRCRAFT 42RF

OPERATOR WIRFEL/PARRISH SHEET 1 OF 1

TAPE #	TIME ON	TIME OFF	SOURCE RADARS			REWOUND?		COMMENTS
			NO	TA	LF	YES	NO	
1-1	131130	130505			✓		✓	Painted P.R. + Dominica Two L.F. Calibrations (STOP MODE)
	132915	144510			✓			
								<div style="display: flex; justify-content: space-around;"> <div style="border: 1px solid black; padding: 5px;"> <p><i>Time of Steps</i></p> <p>133232</p> <p>133239 #1</p> <p>133247</p> <p>133253</p> <p>133300</p> <p>133307</p> </div> <div style="border: 1px solid black; padding: 5px;"> <p>133324</p> <p>133331</p> <p>133337 #2</p> <p>133346</p> <p>133353</p> <p>133400</p> </div> </div> <p style="text-align: center;"><i>Fat</i></p> <p>Tail radar kept off until in storm to keep it cool.</p>
2-1	144515	145802			✓		✓	Started recording Tail as well as LF. Looks like getting false returns from behind A.C. on L.F.
2-1	145808	153600		✓	✓		✓	
1-2	153610	160600		✓	✓		✓	Fat First minute of Tail lost due to radar accidentally put in Test mode changing integ constant.
2-2	160605	164750		✓	✓		✓	} coffee spill onto tape. } drives during turbulence were rewound to help drying.
1-3	164756	172300		✓	✓		✓	
2-3	172305	180320		✓	✓		✓	Hit EOT Tail turned off - out of storm.
1-4	181915	184755			✓		✓	Painted Keys ~ 1831 GMT

AUG 6 1980

OPERATOR WIRFEL

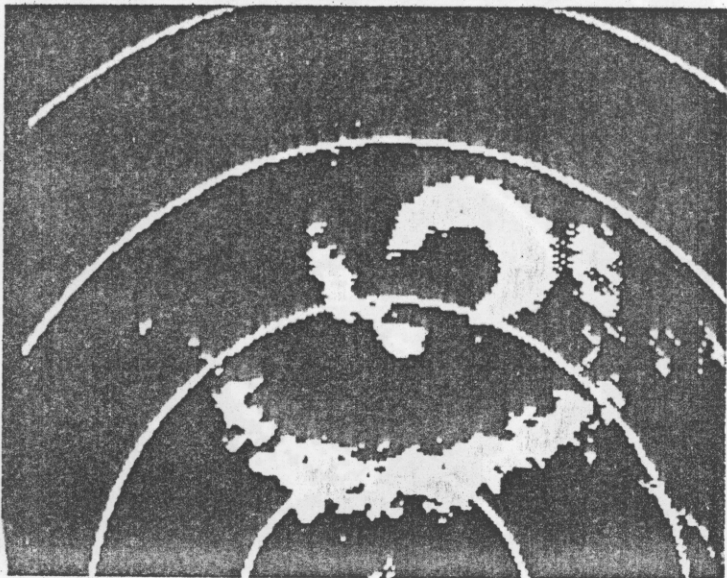
NHEML RADAR LOG

SHEET 1 OF 1

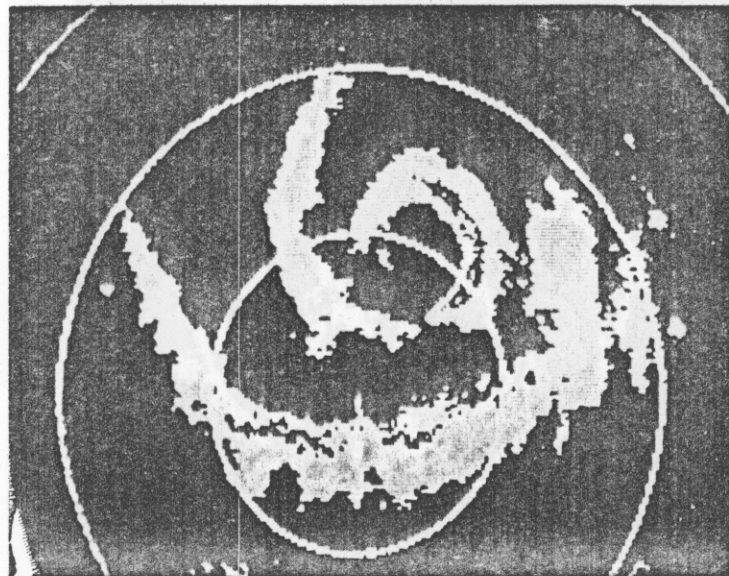
RADAR DOWN-TIME LOG

<u>ITEM</u>	<u>TIME DOWN</u>	<u>TIME UP</u>	<u>PROBLEM</u>
<i>Nothing down!</i>			

ITEM LIST: VTR, DMTRI, DMTR2, COMP, ROSC, LF, NO, TA, DSCI, DSC2

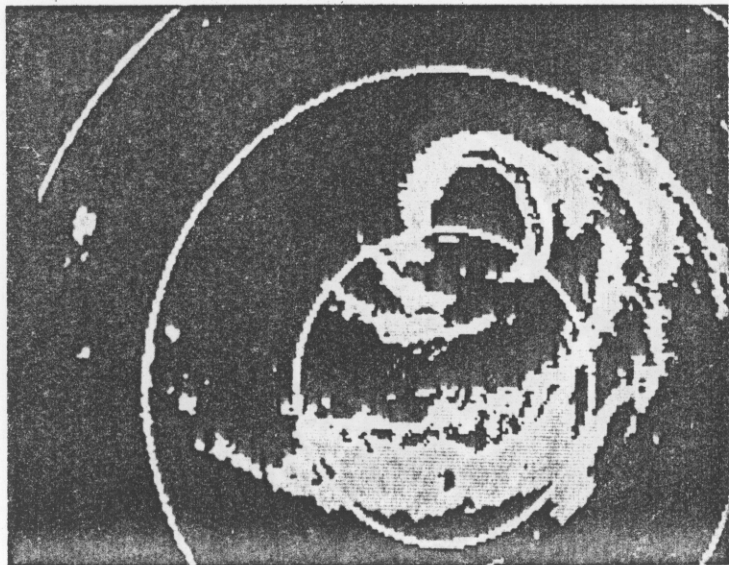


145908/308.0/+3.0
INITIAL PENETRATION

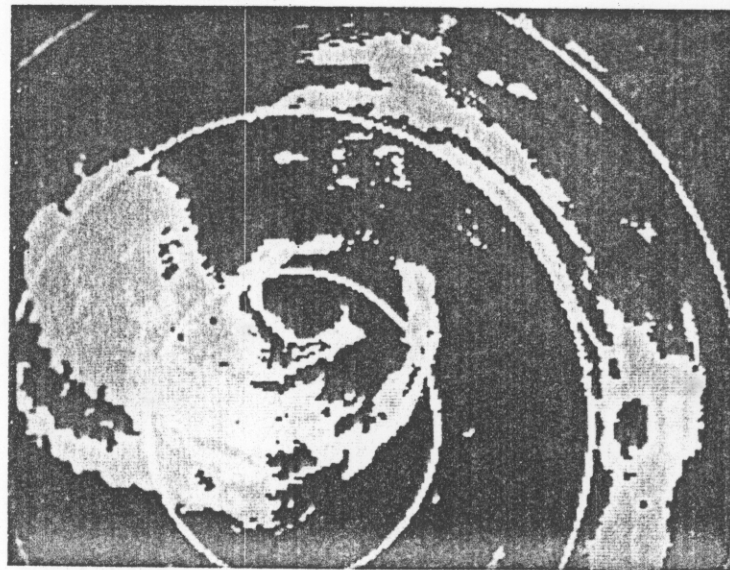


151140/298.0/+3.0

LAST PENETRATION - MAX DIPS
180 KNOTS



161630/321.0/+3.0

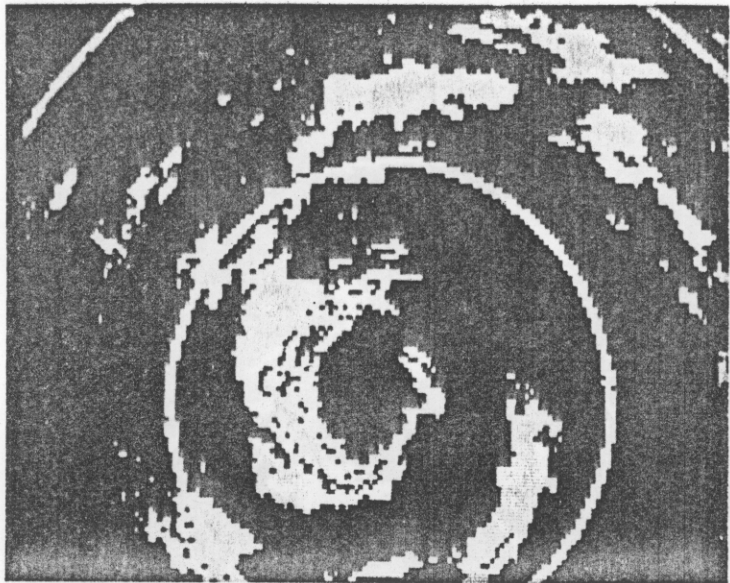


172515/82.0/+1.0 UP TO 10K

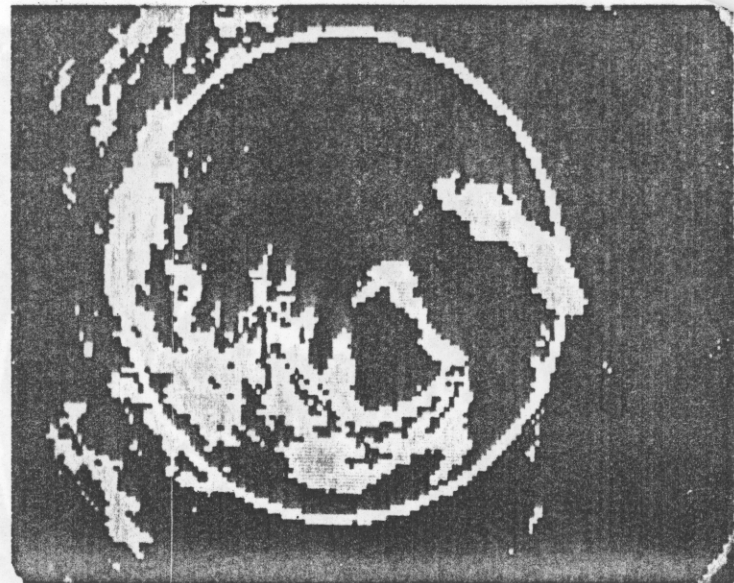
NEAR 2000 FT AT 15

42RF

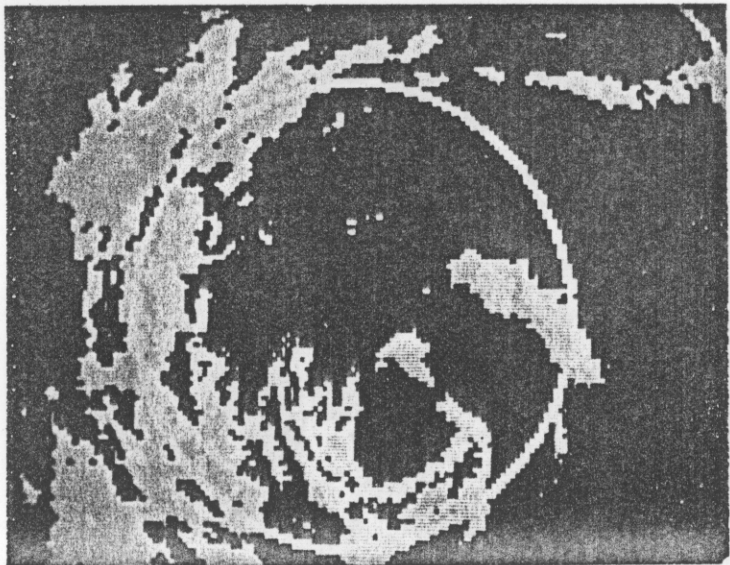
800806H (1)



173250/163.0/+2.0



173600/128.0/+2.5
LAST PENETRATION - MAX WINDS
180 KNOTS



173700/127.0/+2.0



800806H (2)