

Appendix J

Operational Checklists

19780903I-LPS

FORM J-1

On-board Lead Project Scientist Checklist

DATE 780903IAIRCRAFT 43RFFLT

A. Participants

Function	Participant	Function	Participant
Lead Proj. Sci.	<u>STACK</u>	Gust Probe	<u> </u>
Cloud Physics	<u>HICKS</u>	Omega Sonde	<u> </u>
AXBT	<u>LANE</u>	Sys Eng	<u>MCCORMY</u>
Hot Film	<u> </u>	Data Tech	<u>BRUNSON</u>
Radar	<u>MARTIN WIRFEL</u>	El Tech	<u>FINNELL</u>
Flt DIR/MET	<u>DAVIS</u>	Other	<u>NOBLE</u>
			<u>WELIE</u>
			<u>ROSE</u>

Time Off	Location	Time On	Location
<u>1229</u>			

B. Past and Forecast Storm Position - Observed Positions

Date	Time	Lat	Lon	Date	Time	Lat	Lon	MSLP
<u>03</u>	<u>182</u>	<u>34.5</u>	<u>71.0</u>					
<u>04</u>	<u>062</u>	<u>36.0</u>	<u>69.5</u>					

C. Mission Briefing

will drop AXBT" every 15 min from 30.8, 24°
to 60 min north of center

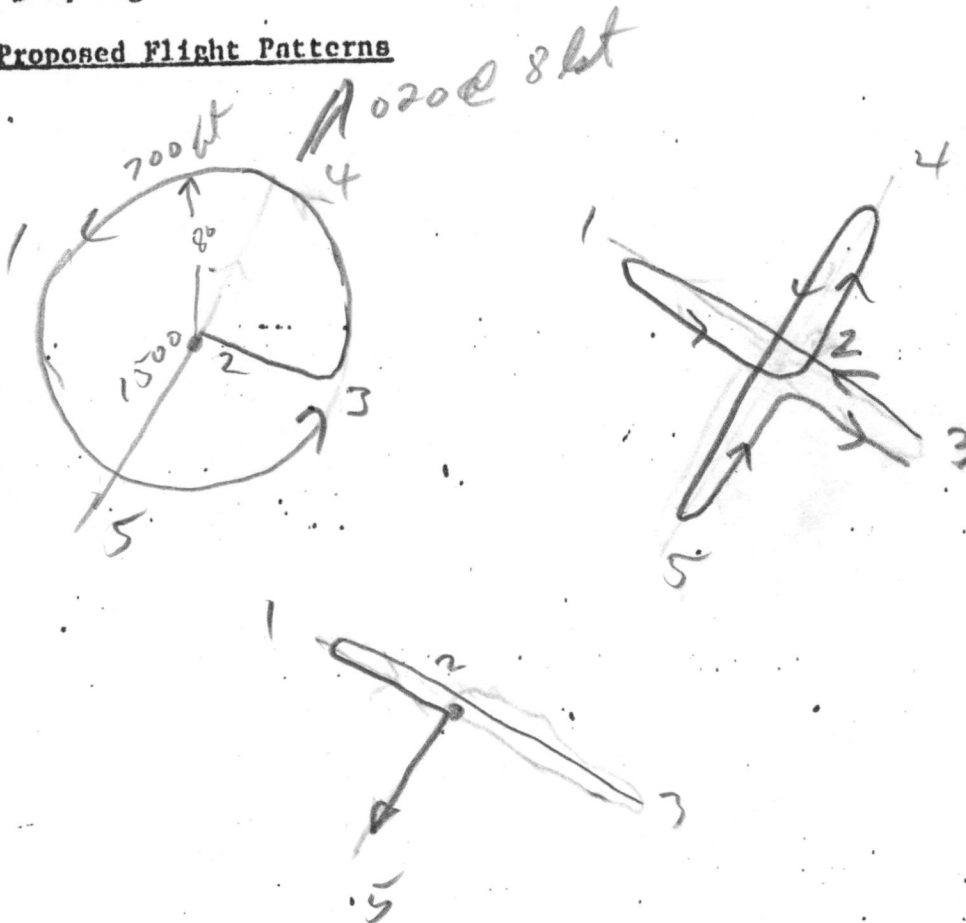
D. Equipment Status

<u>Equipment</u>	<u>Pre Flt</u>	<u>In Flt</u>	<u>Post Flt</u>	<u>Reports Collected</u>
Aircraft	OK			
Radar	No video tape	Trouble w. both tape drives (fixed)		
Cloud Physics	OK			
Data Sys				
Omega Sondes				
AXBT	OK			
Gust Probe				
Hot Film	DOWN			
Photography				

REMARKS

lost pilot scope again, $\frac{1}{4}$ way through
 warmup, sorted pattern after
 18 Z run,
 pilot always controls STC on non radar
 Hi data rate (40 hz) for whole flight!
 could not locate cloud physics case
 ran short of Kullenburg tapes.

E. Proposed Flight Patterns

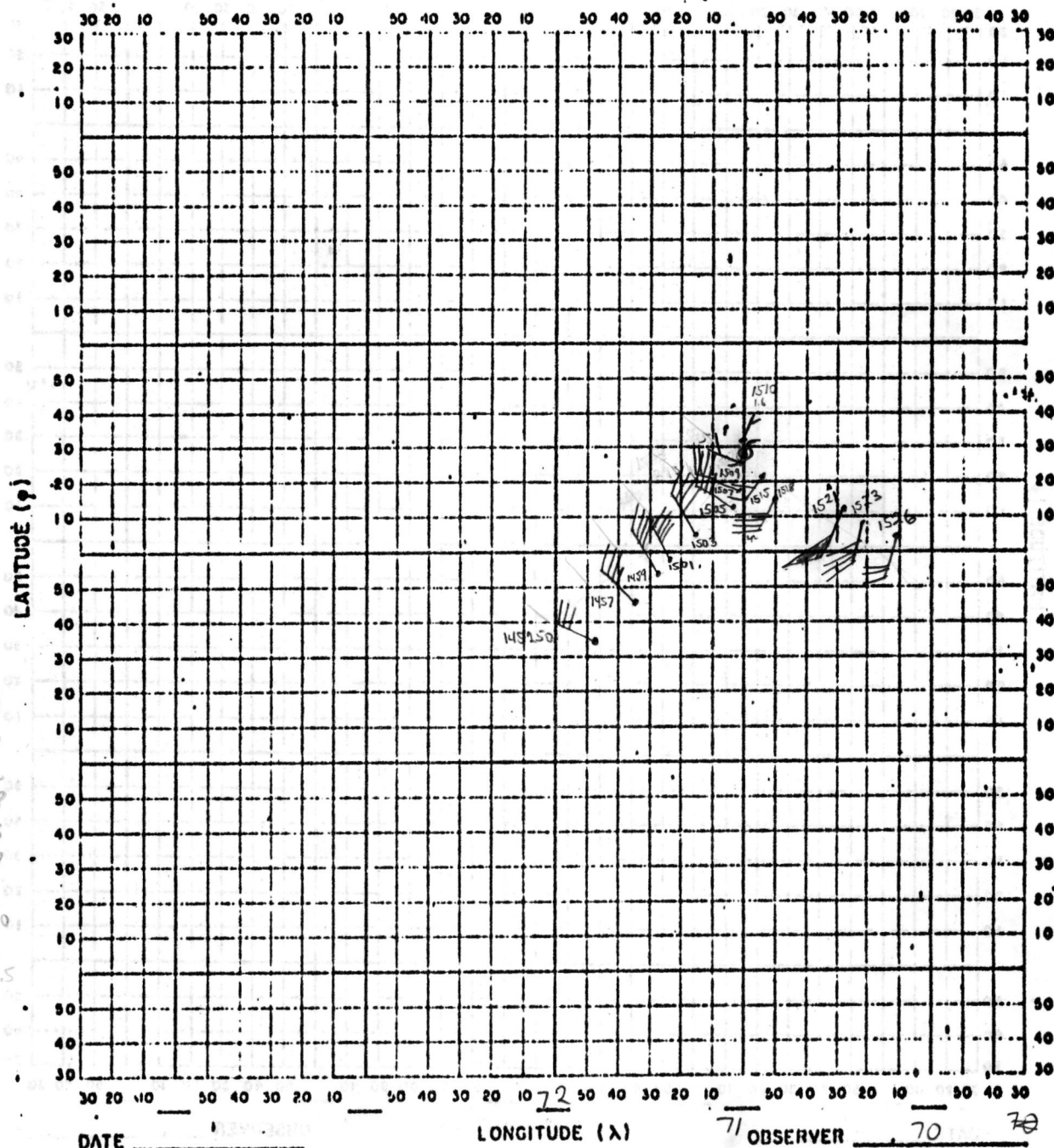


F. Actual Flight Patterns



HURRICANE RECCO PLOTTING CHART

TRUE AT 25° LATITUDE, IN DEGREES AND MINUTES OF ϕ AND λ



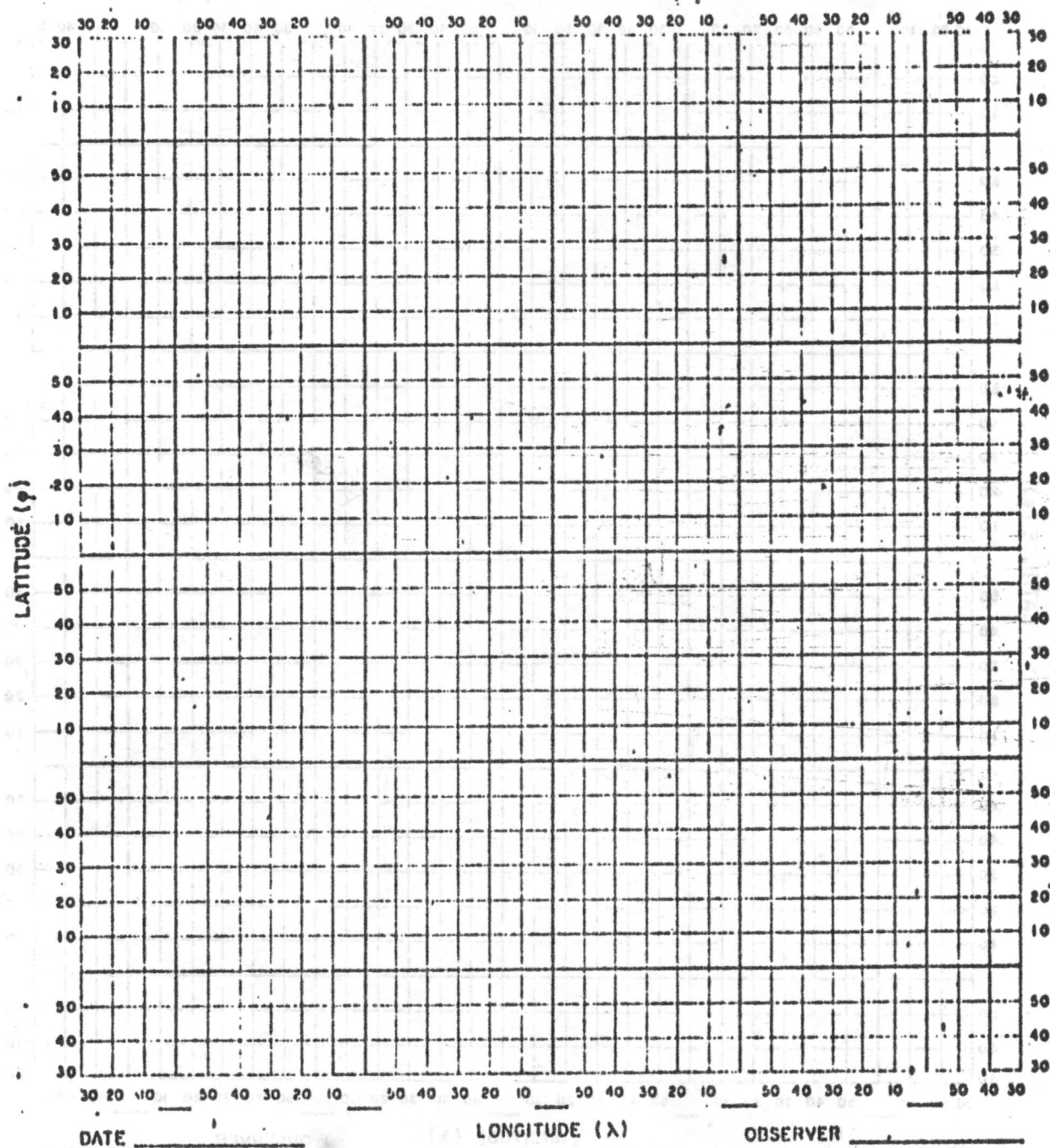
NOTE: LABEL FULL DEGREES ACCORDING TO LOCATION OF FLIGHT AREA

1452 → 1526
18 1519 16

MP
11-3-78

HURRICANE RECCO PLOTTING CHART

TRUE AT 25° LATITUDE, IN DEGREES AND MINUTES OF ϕ AND λ



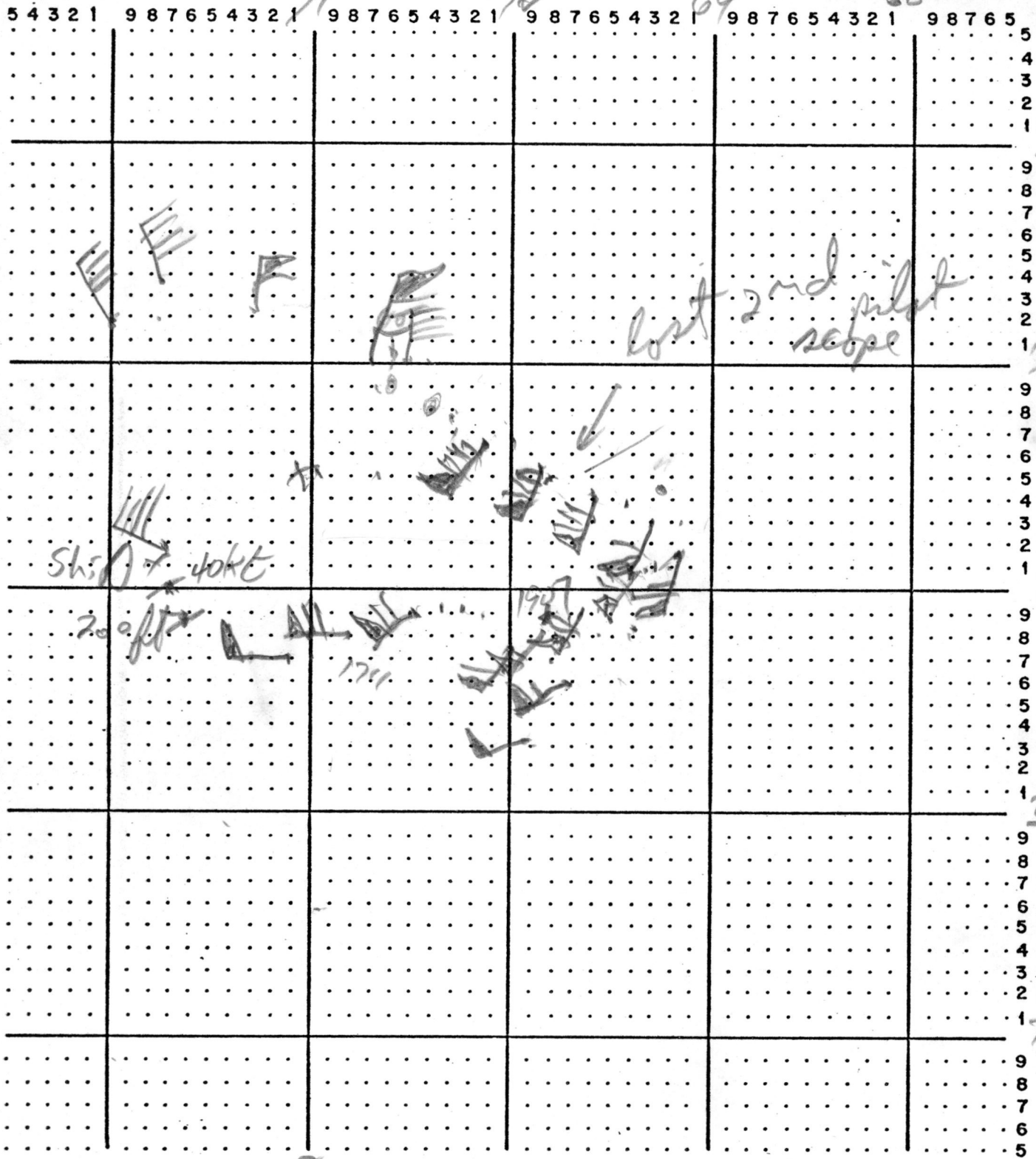
NOTE: LABEL FULL DEGREES ACCORDING TO LOCATION OF FLIGHT AREA

HURRICANE RECCO PLOTTING CHART

True at 25° latitude, in degrees and tenths of ϕ and λ

FLIGHT 780903Z LEVEL

LATITUDE (ϕ)



LONGITUDE (λ)

DATE

OBSERVER

NOTE: LABEL FULL DEGREES ACCORDING TO LOCATION OF FLIGHT AREA.

HURRICANE RECCO PLOTTING CHART

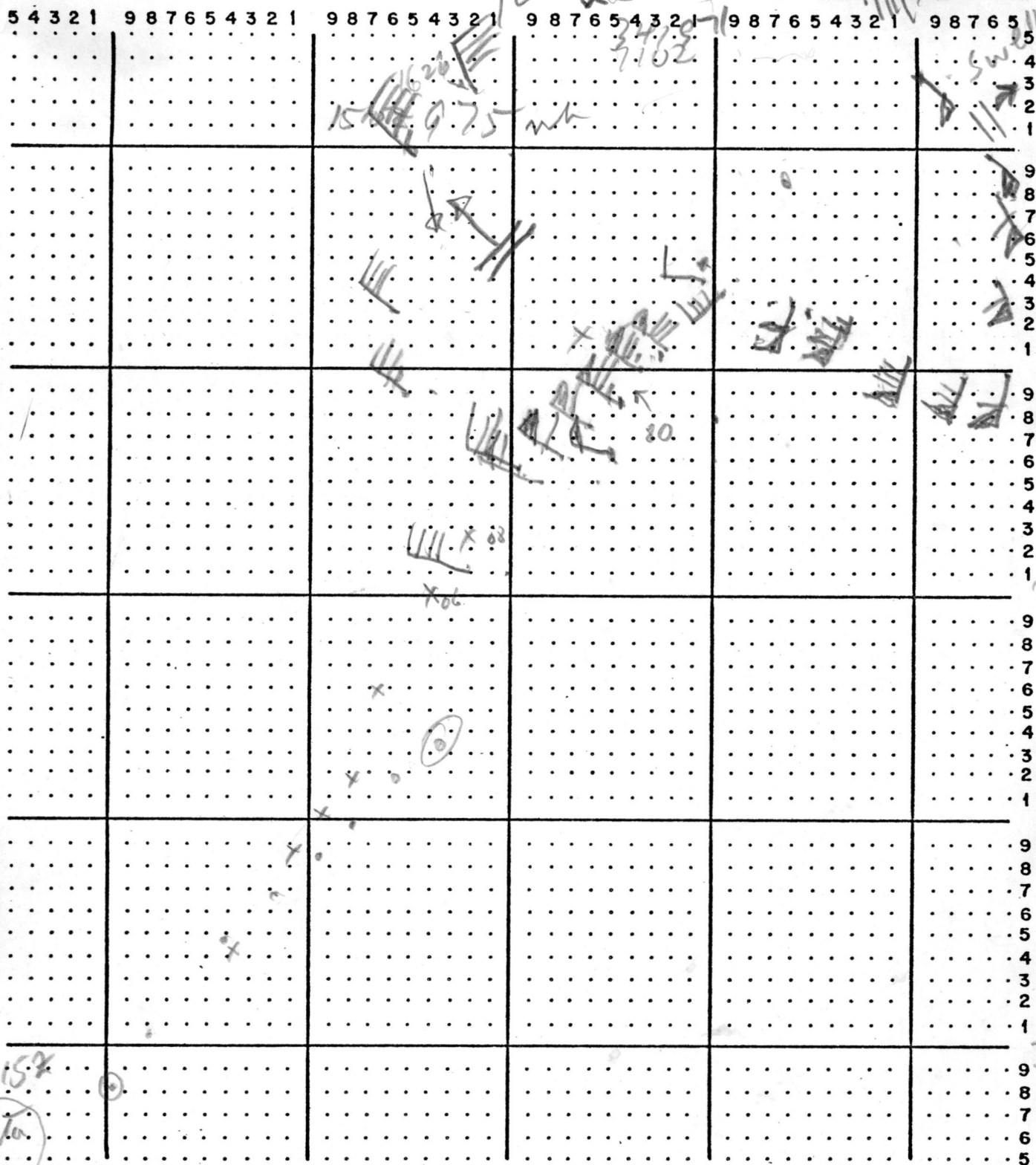
True at 25° latitude, in degrees and tenths of ϕ and λ

FLIGHT 780903 E

LEVEL 700-1500

*Post Pilot
recpt*

LATITUDE (ϕ)



LONGITUDE (λ)

DATE _____

OBSERVER _____

NOTE: LABEL FULL DEGREES ACCORDING TO LOCATION OF FLIGHT AREA.

W/S

40
1735 - 1818

1736 - 1816

WS, P
TA, TD
WZ, TS

1510

1450 - 1530

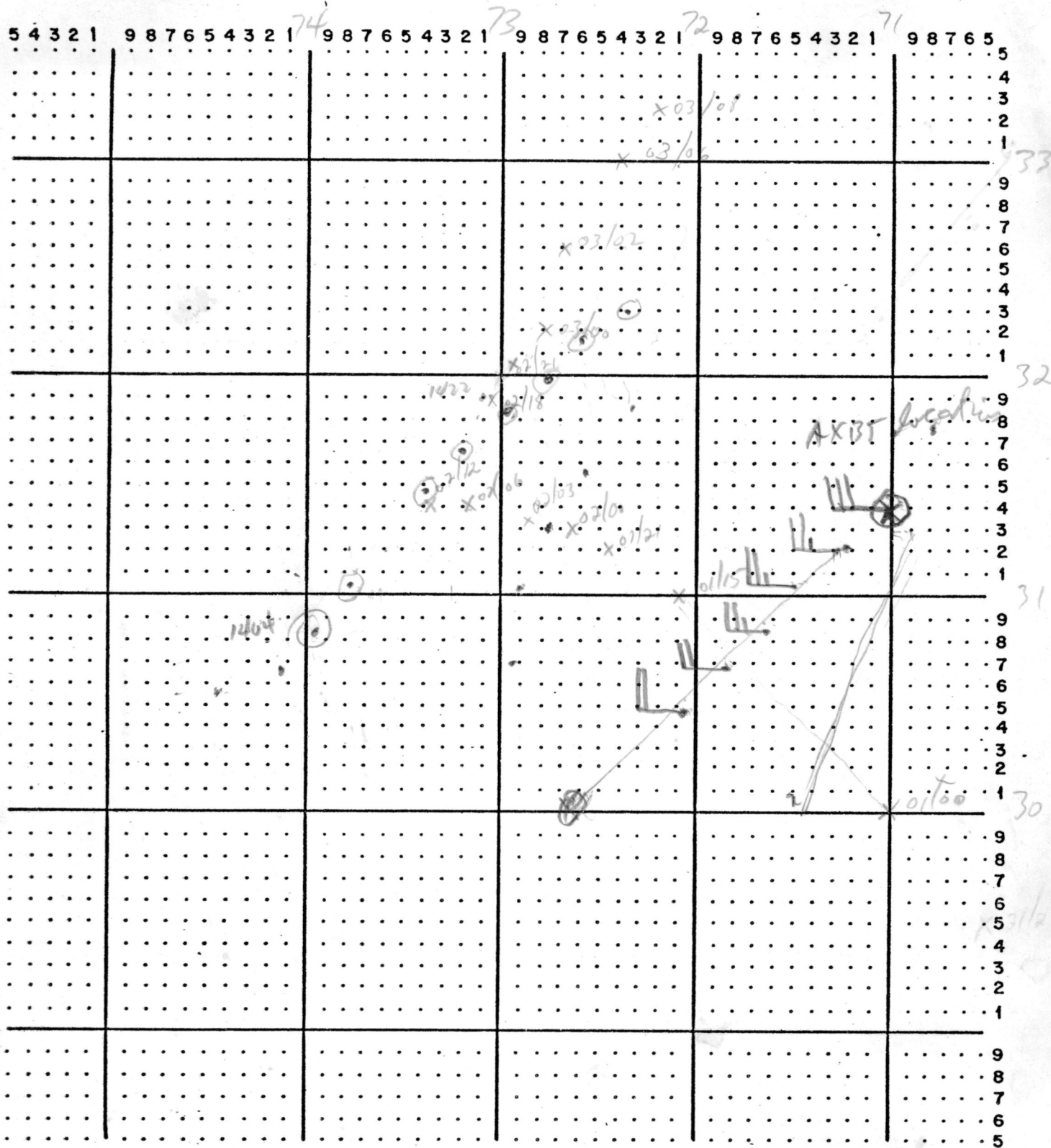
WS Press
TA TD
FW Z
SST

HURRICANE RECCO PLOTTING CHART

True at 25° latitude, in degrees and tenths of ϕ and λ

FLIGHT 780903 I LEVEL

LATITUDE (ϕ)



LONGITUDE (λ)

DATE

OBSERVER

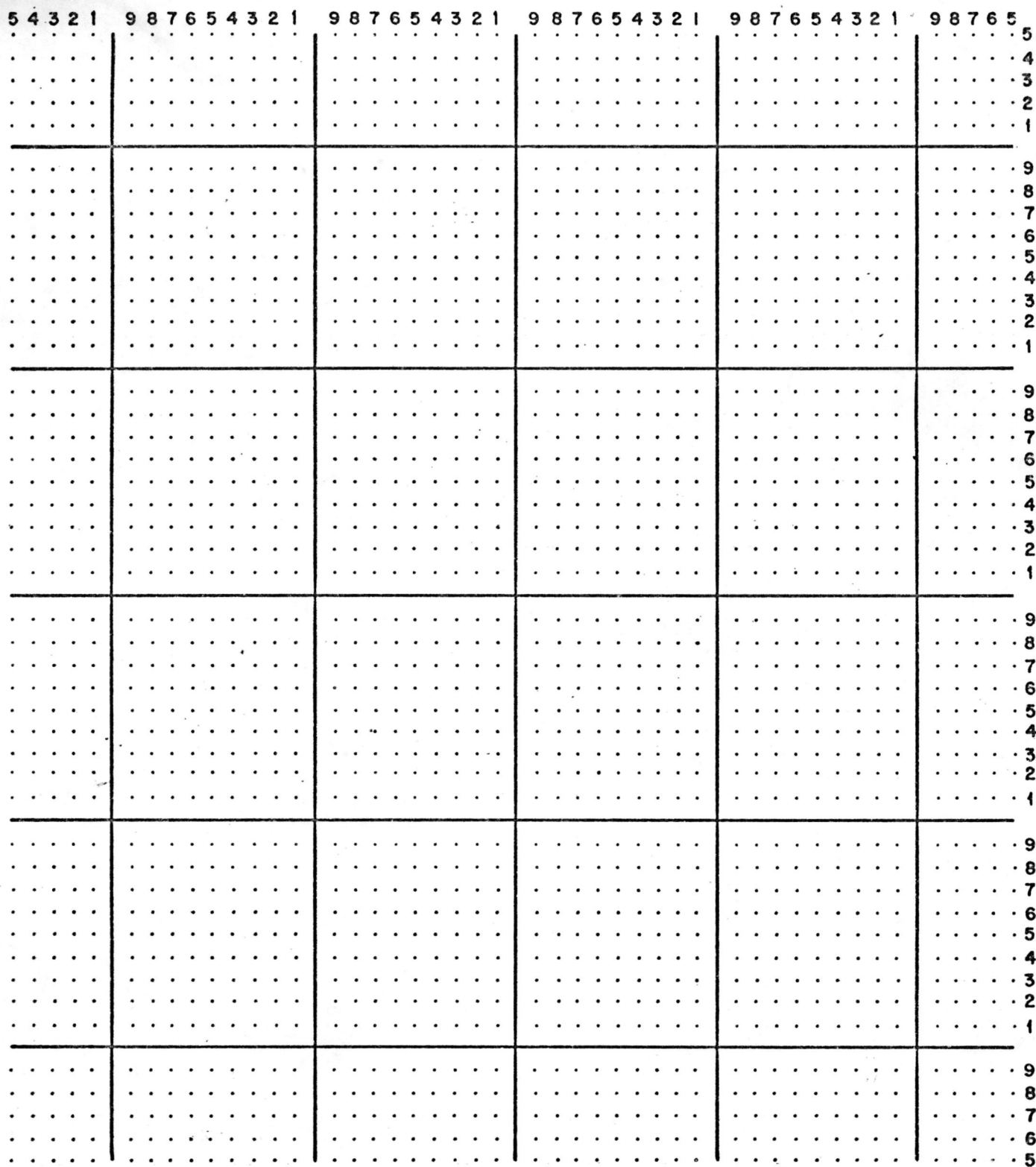
NOTE: LABEL FULL DEGREES ACCORDING TO LOCATION OF FLIGHT AREA.

HURRICANE RECCO PLOTTING CHART

True at 25° latitude, in degrees and tenths of ϕ and λ

FLIGHT _____ LEVEL _____

LATITUDE (ϕ)



LONGITUDE (λ)

DATE _____

OBSERVER _____

NOTE: LABEL FULL DEGREES ACCORDING TO LOCATION OF FLIGHT AREA.

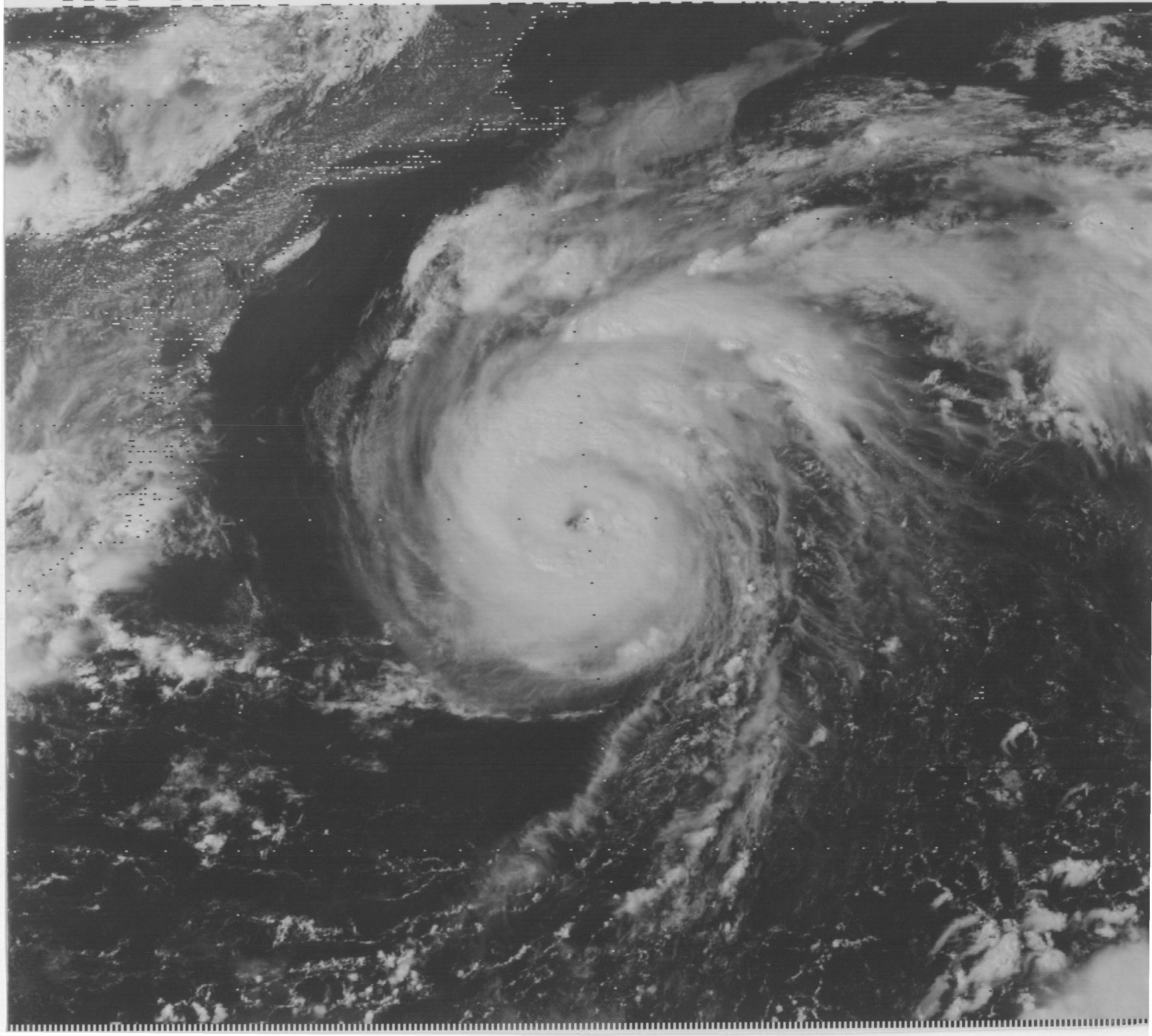
0831 03SE78 14E-HBD 02451 19731 MA34N73W-1



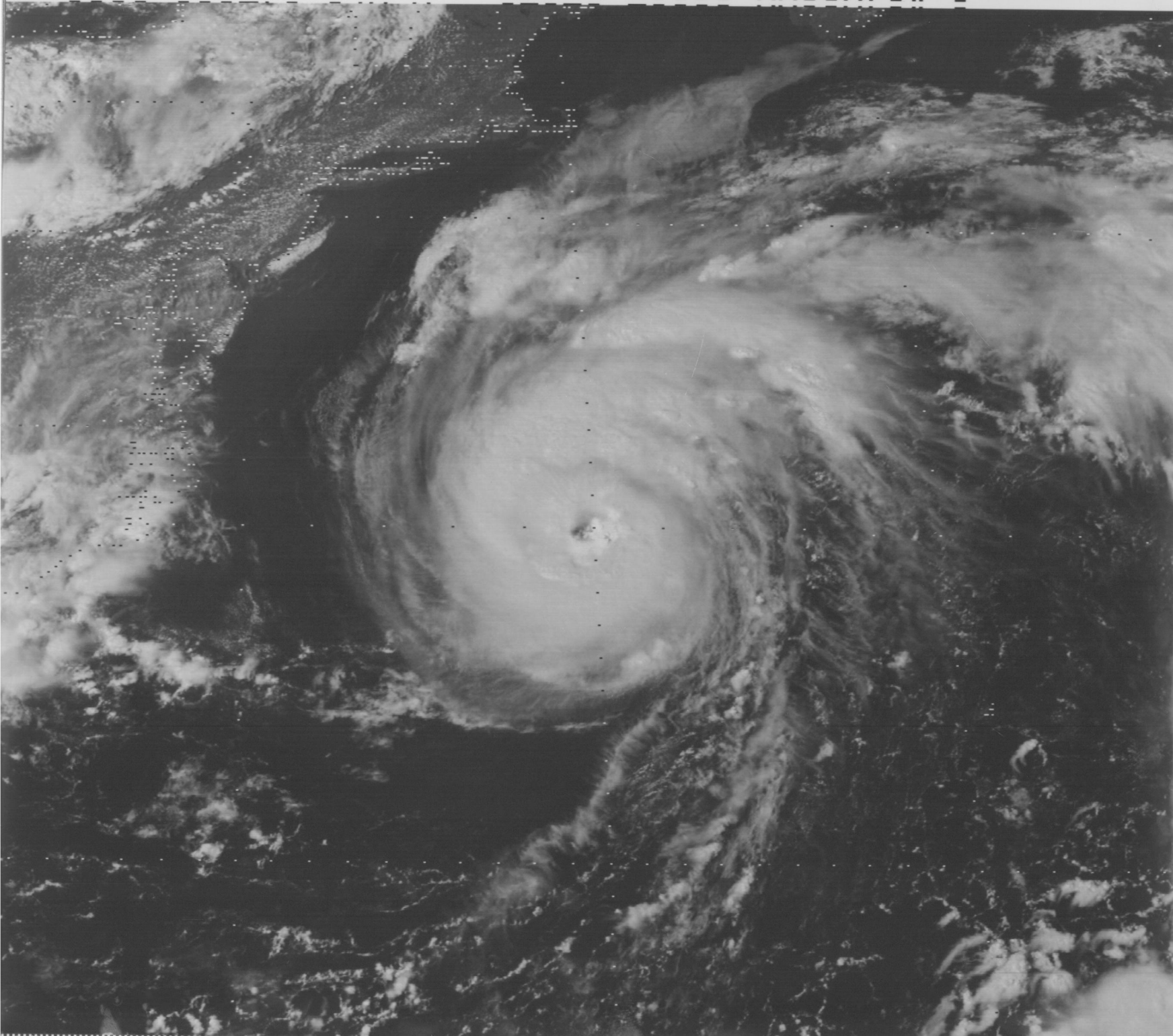
0901 03SE78 14E-HBD 02451 19731 MA34N73W-1



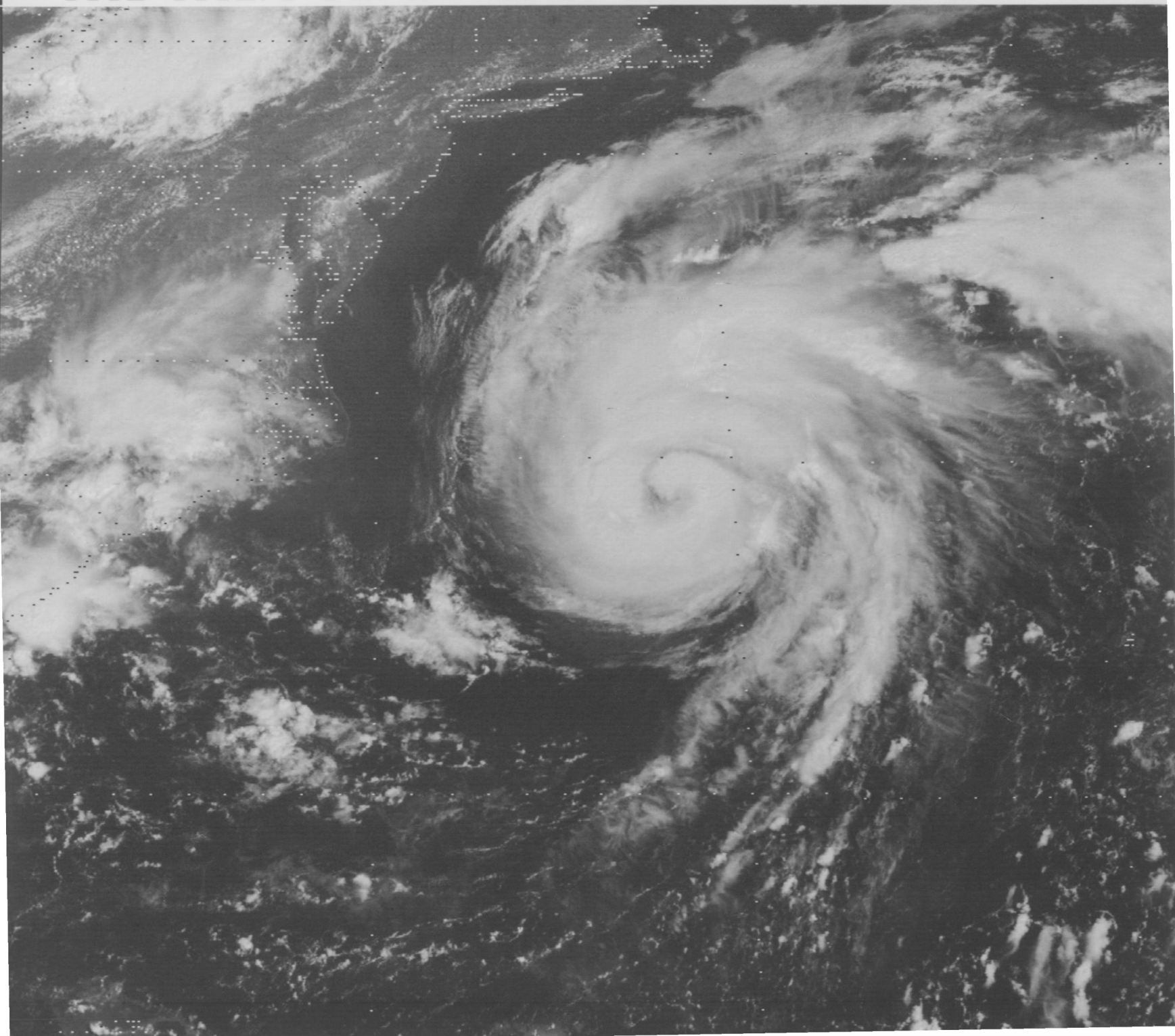
1831 03SE78 14A-H 02321 20531 MA35N70W-1



1831 03SE78 14A-H 02321 20531 MA35N70W-1



1532 03SE78 14A-H 02451 19981 MA34N72W-1



1532 03SE78 14A-H 02451 19981 MA34N72W-1

