

NOTE: EACH DEGREE OF LATITUDE AND LONGITUDE IS DIVIDED INTO TENTHS.
CONCENTRIC CIRCLES AT INTERVALS OF 25 NAUTICAL MILES.
SCALE 1:250,000
LAMBERT CONFORMAL CONIC PROJECTION, STANDARD PARALLEL AT 23°

STATUTE MILES
NAUTICAL MILES
MAP R.250.6.62

19770830FI.RADAR



158 p 0 20

160310

30 AUG 1977

50 mile range

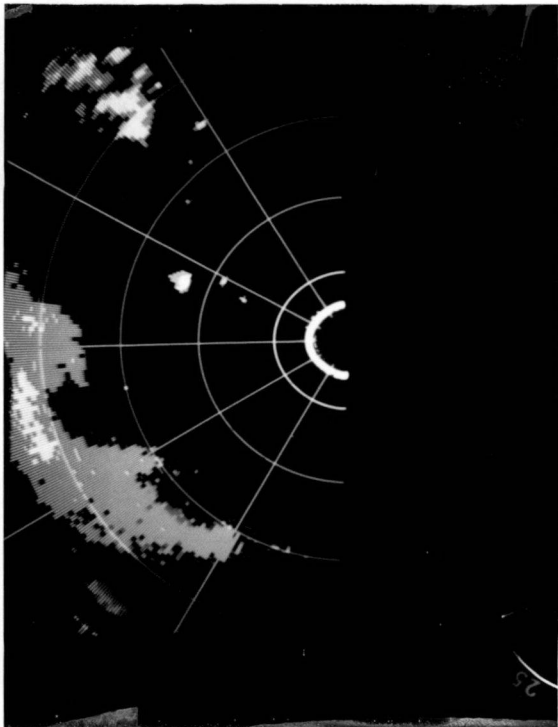
160310

TH 271

TK 271

25-58.3

83-33.9



1588020

163820

30 AUG 1977

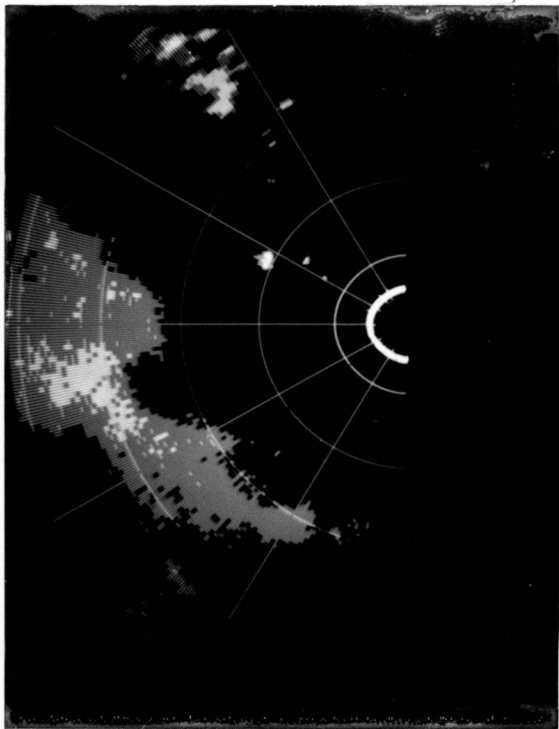
50 mile range

259

TH 277
TK 278

N 26-08.8
W 086-39.3

5 26.58
90.45



1 5 8 0 0 2 0

16 38 40

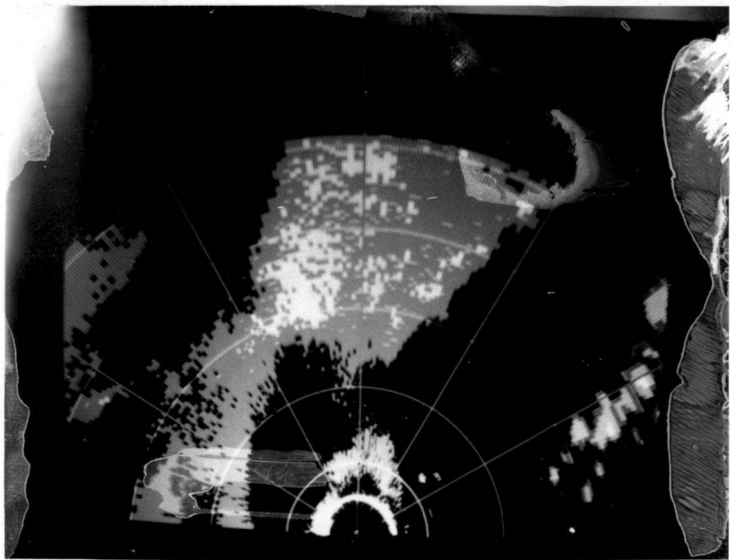
30 AUG 1977

50 mile range

16 38 40

TH 277
TK 278

φ 26-09.0
λ 86-41.1



1588023

164110

30 AUG 1977

50 mile range

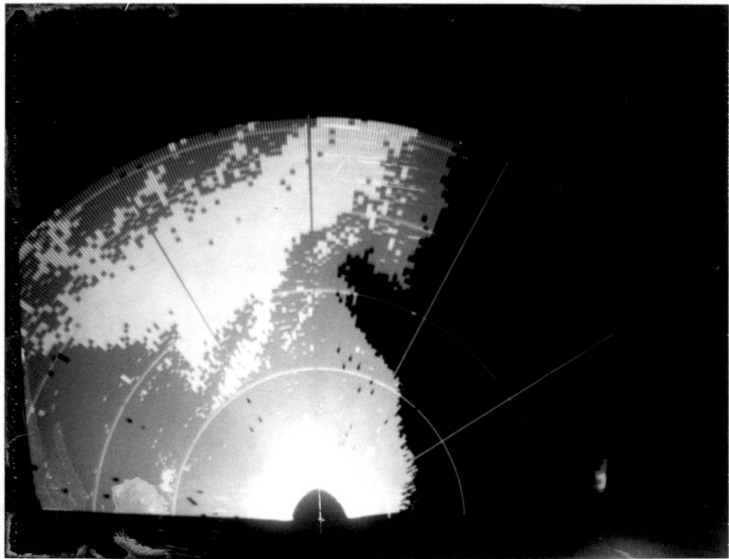
TH 279

TK 276

Ø 26-10.9

λ 86-54.2

01 1491



1580020

165920

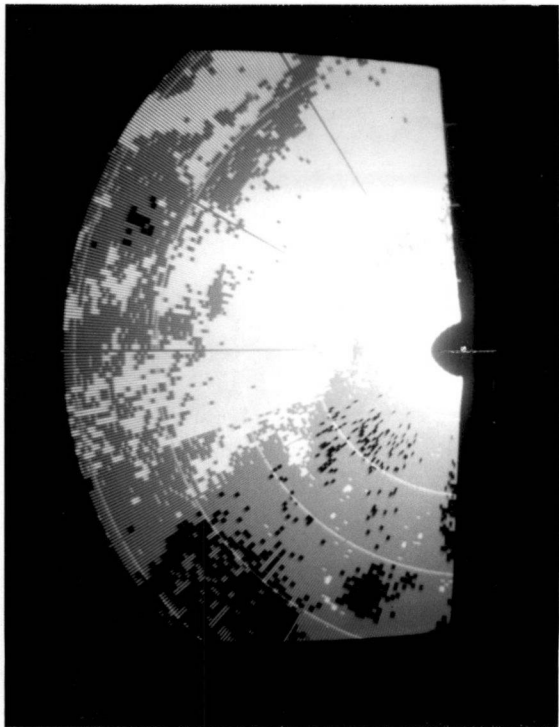
30 AUG 1977

TH 276

TK 278

ϕ 26-220

λ 88-31.4



1 5 6 8 0 2 5
170630 - 50 Range

30 AUG 1977

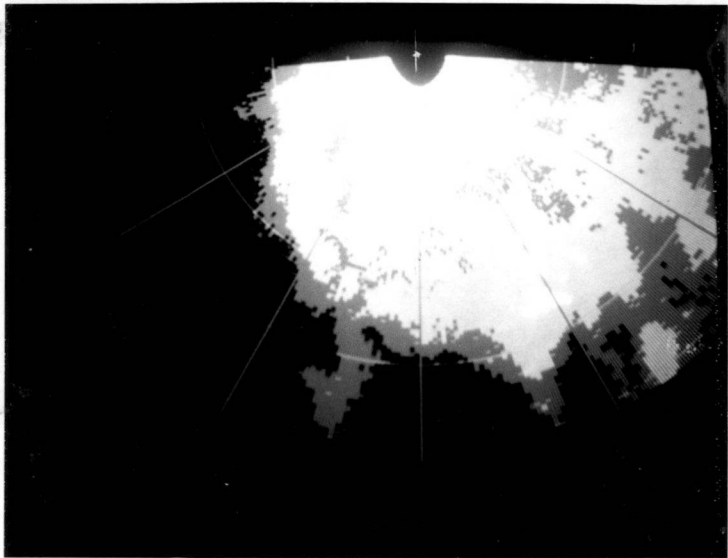
TH 200

TK 206

Ø 26-35.9

1 89-00.1

Begin Pattern



1580020

171315 50' range

30 AUG 1977

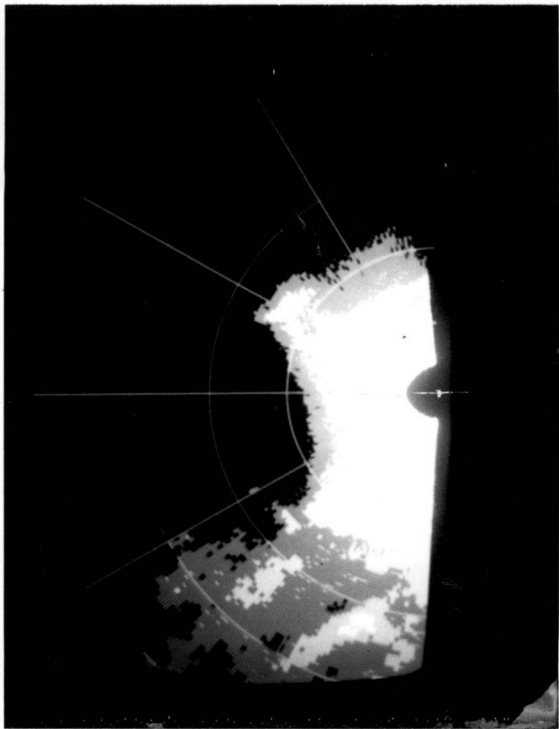
26-32.5

TH 266

89-33.6

295

171315



1 5 8 8 0 2 3

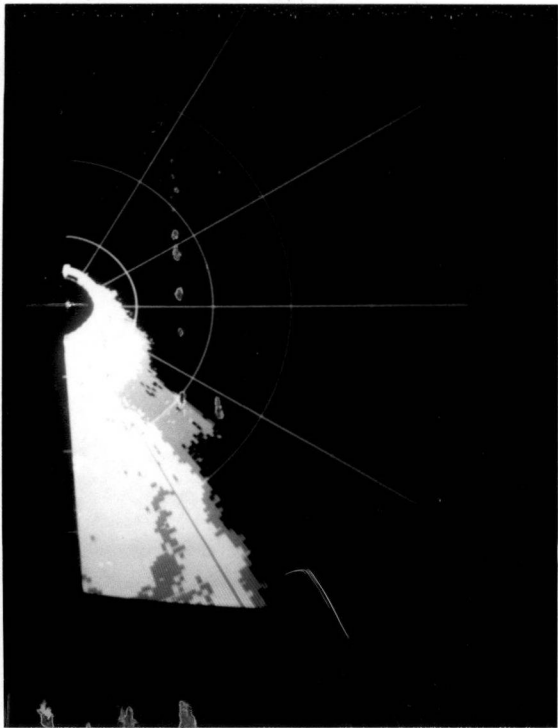
171900

30 AUG 1977

171900

26-33.2
89-03.4
90

TH 266



158 p 0 20

172530

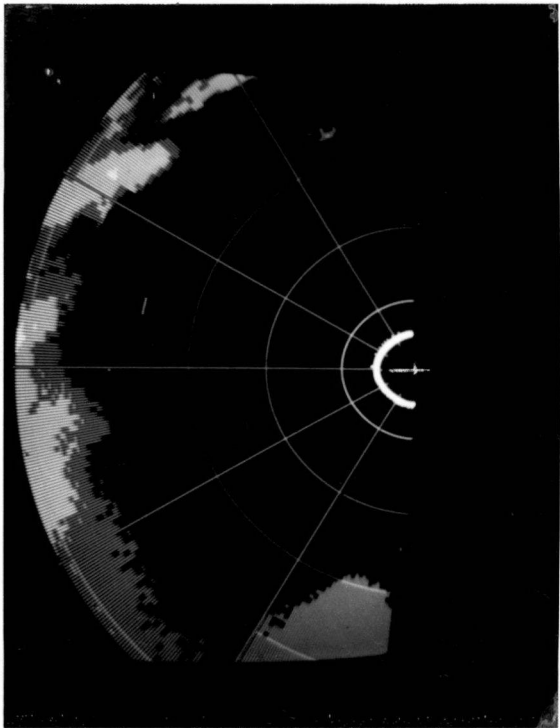
30 AUG 1977

26-39.6

90-30.2

TH 007

172530



1582020

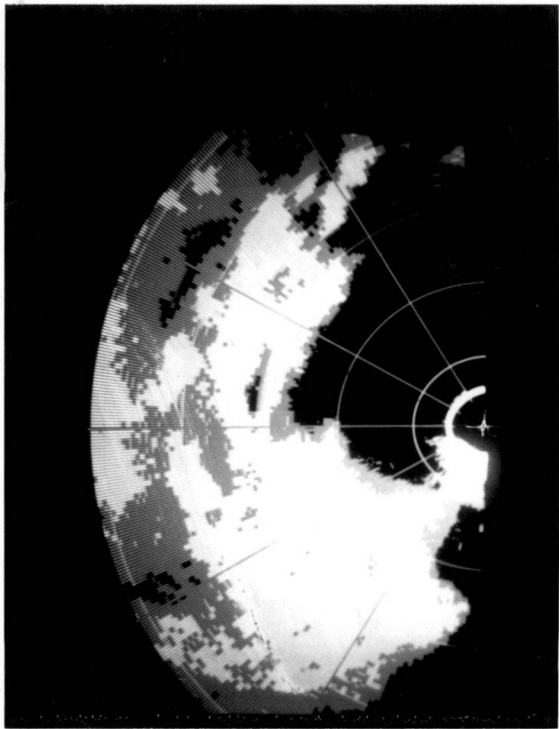
174745

30 AUG 1977

26 - 30.3

91 - 11.0

TH 090



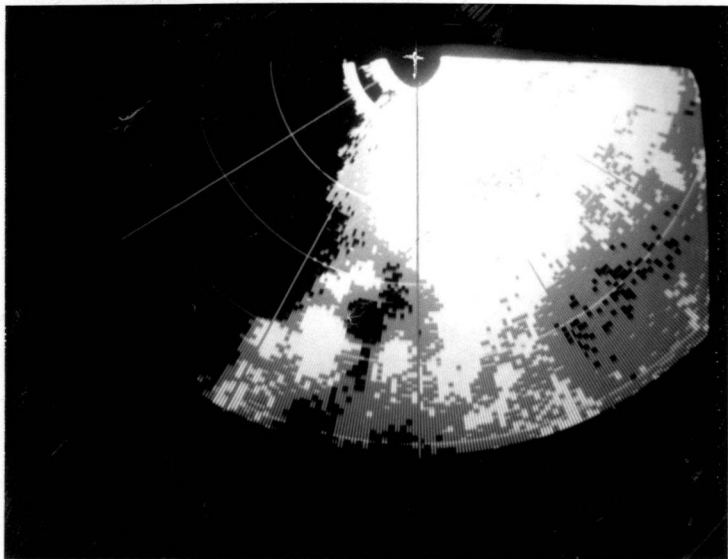
1580020

175455-

30 AUG 1977

26-27.6 TH 116

90-39.5



V 5 8 8 0 2 0

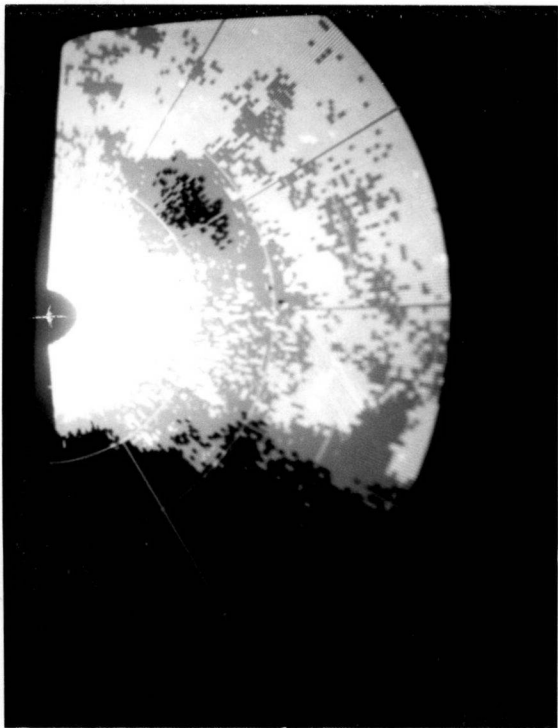
180050

30 AUG 1977

26-08.3

W 90-26.8 TM 189

2508 P/



1580020

180700

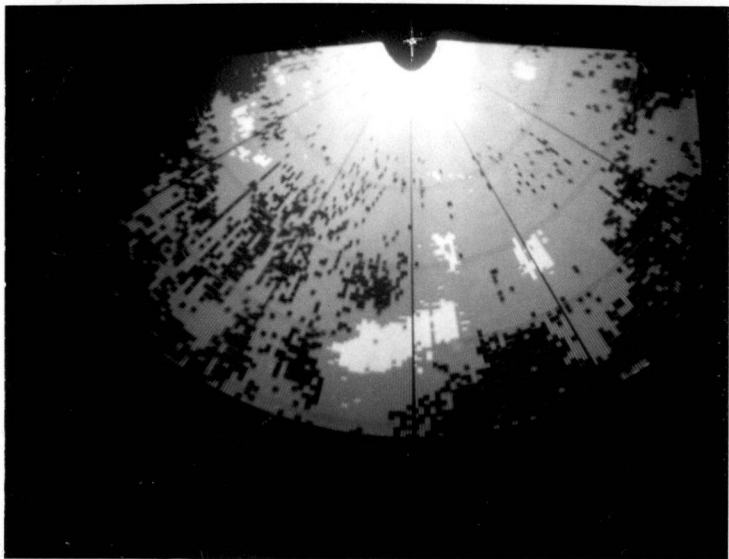
30 AUG 1977

25-39.7

TH 176

90-27.2

002081



25 miles

1588020

181130 25' Range

30 AUG 1977

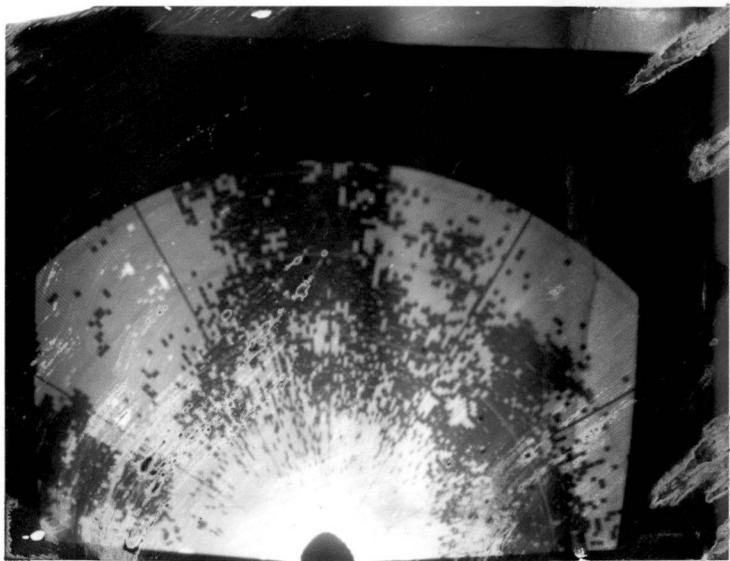
25-19.7

90-25.4

TH 180

25 Range

181130



1586020

181915

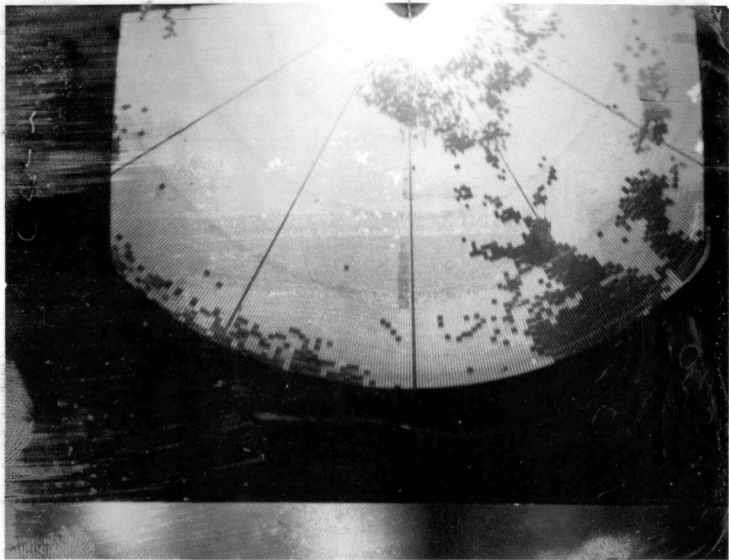
30 AUG 1977

25 mile range

Range 25 mi

2-2

181915



1588020

182330

50' range

30 AUG 1977

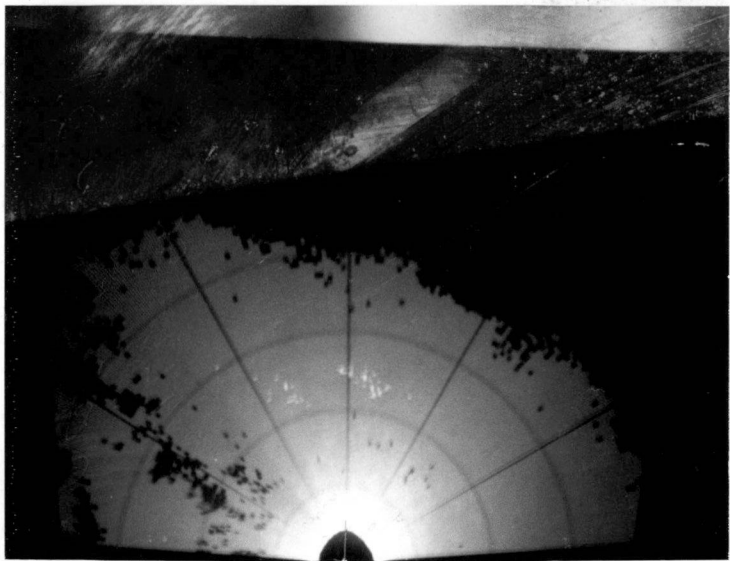
25 - 30.8

89 - 46.7

TH037

588

182330



1588023

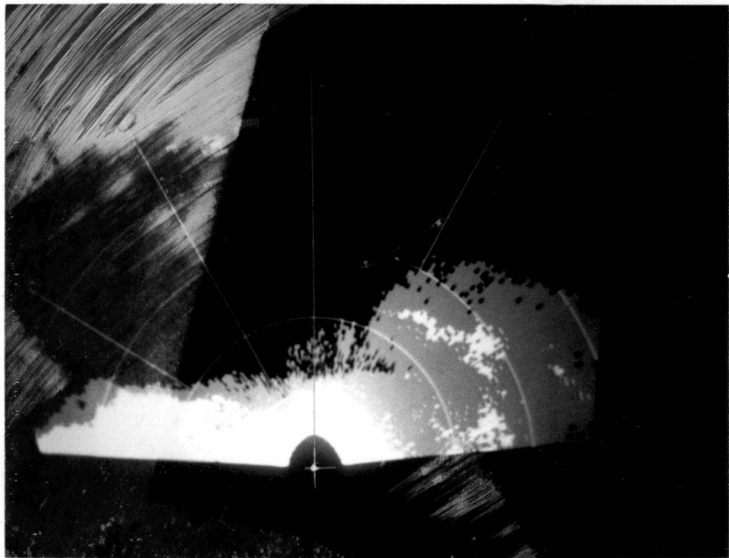
182900 50R

30 AUG 1977

25-51.9

TH 035

89-26.8



1589020

183630 50' range

30 AUG 1977

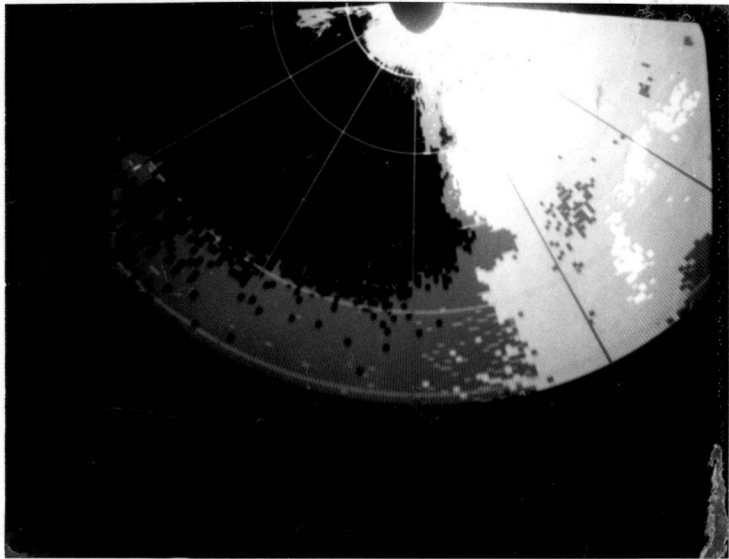
TH 036

89-034

26-199

50'

183630



1580025

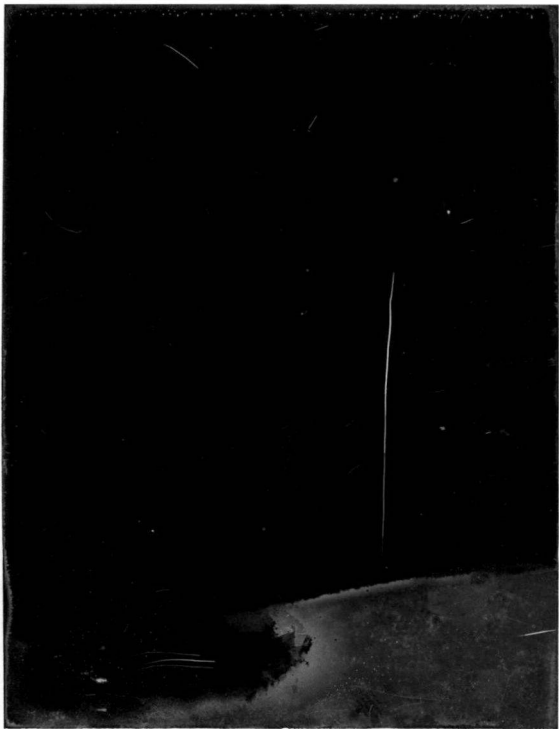
184800 50'x2

30 AUG 1977

TH 298
Descending

N 26-53

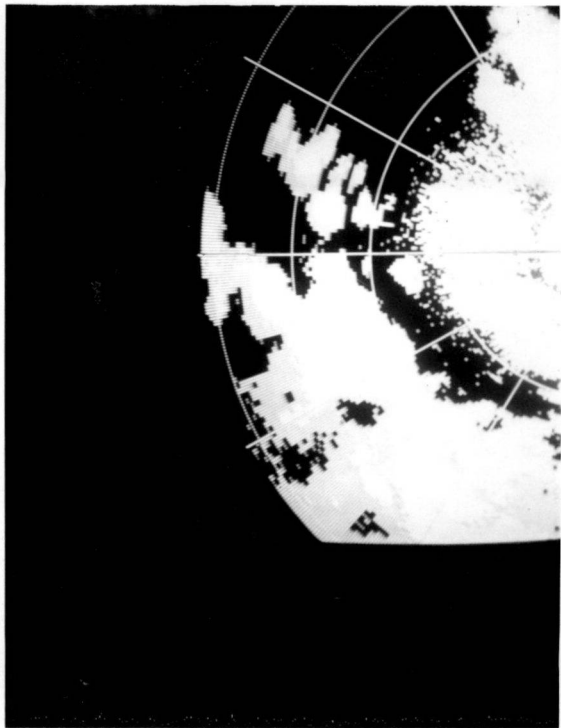
W 89-29.3



1580020

193015 50' RANGE

30 AUG 1977



0708351

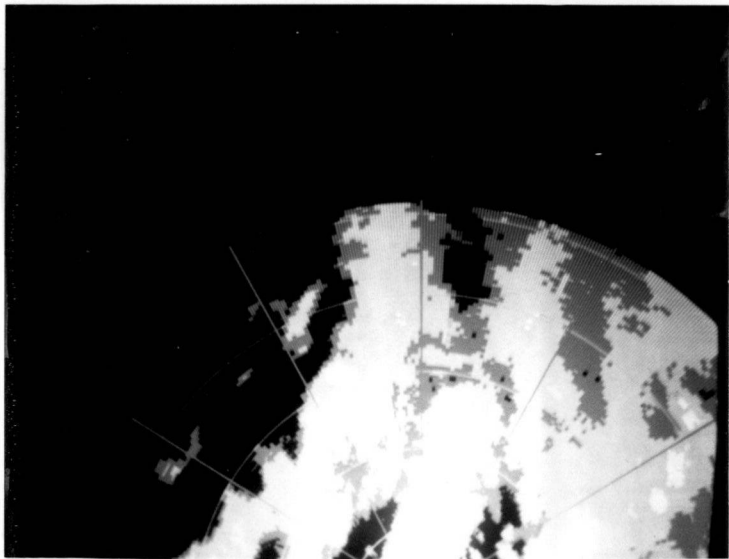
193800 50' R. AUG 2

30 AUG 1977

25-30.7

90-46.1

TH 190

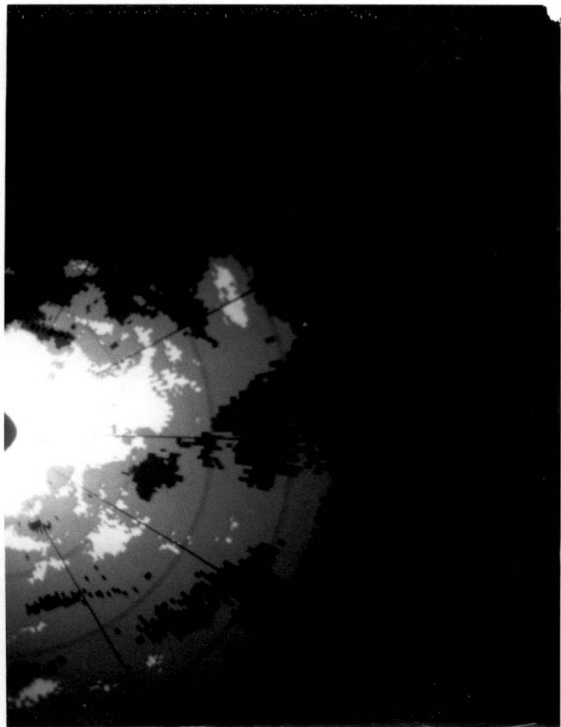


1588020

194830

50' Rank 2

30 AUG 1977



1588020

195500 50' range

30 AUG 1977



1588020

200440 50' Range

30 AUG 1977



1588020

20 1900 Range 50

30 AUG 1977

50 mile range