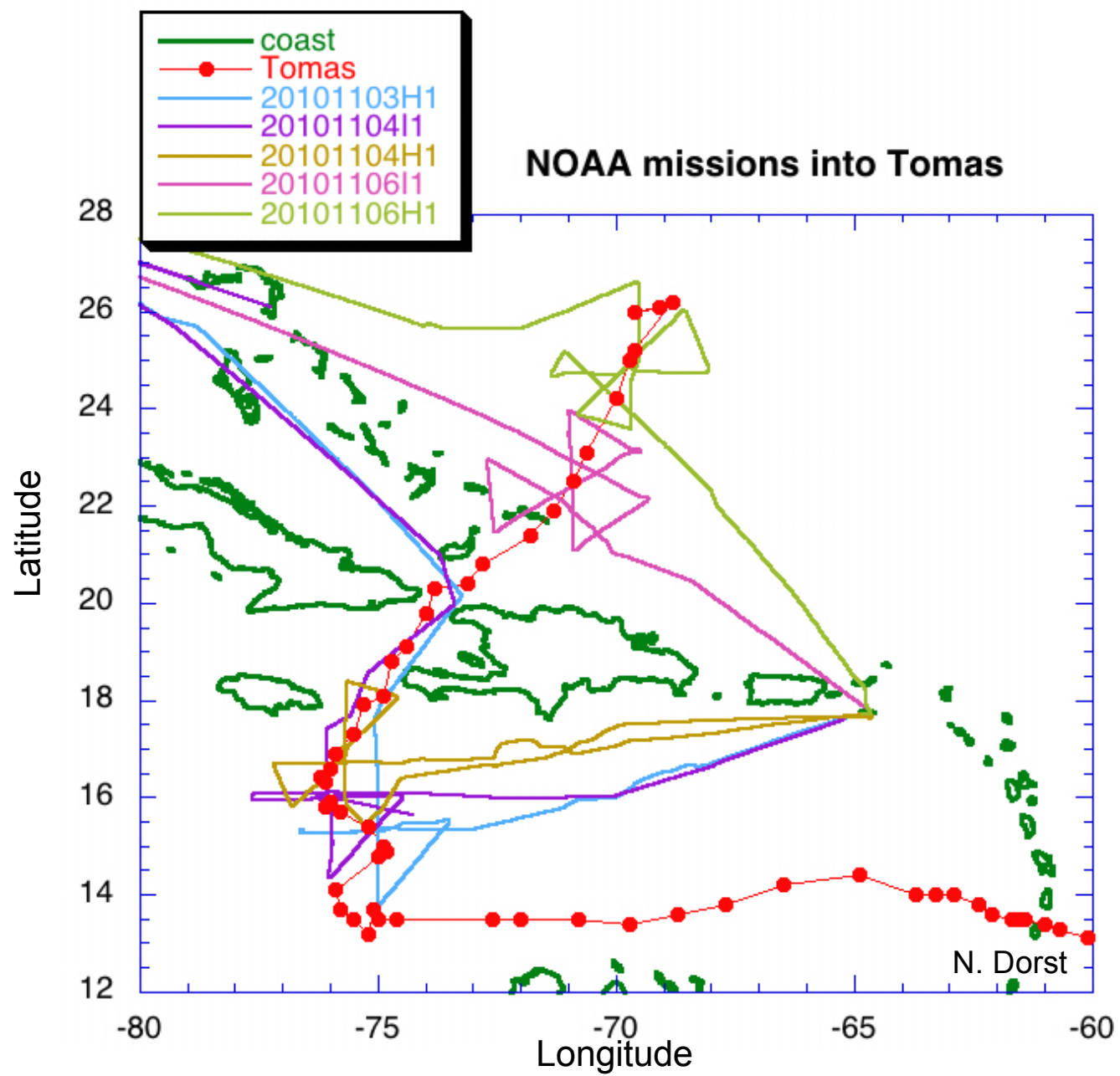


Hurricane Tomas Debrief

- 5 EMC-TDR flights into Tomas
- 1st ever radar data real-time transmission to NCEP Central Ops
- Number of sondes dropped: 47
- Number of radar analyses sent: 14
- Number of H*Wind real-time analyses: 25
- Number of HEDAS runs: 3

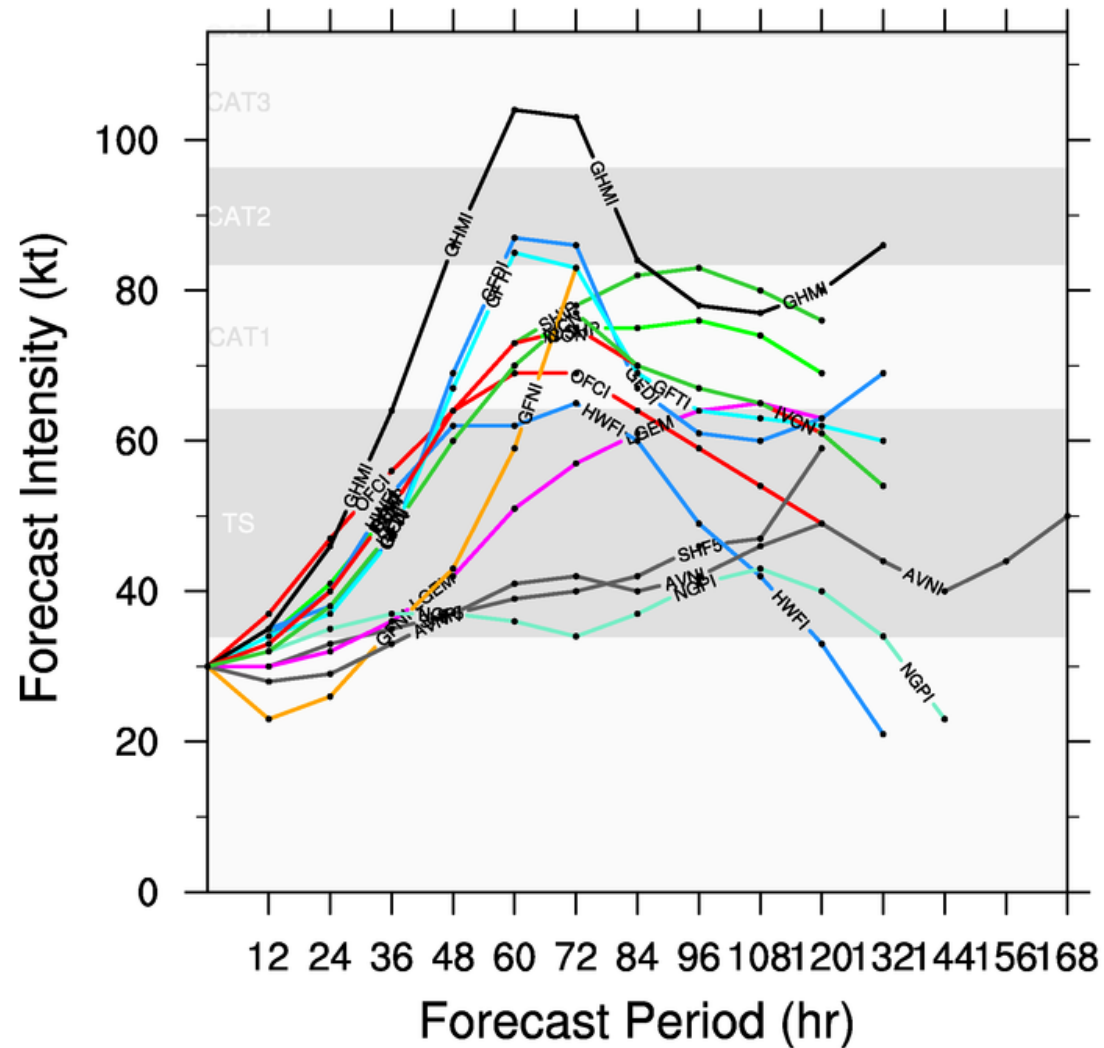
November 19, 2010



TROPICAL DEPRESSION TOMAS (AL21)

Early-cycle intensity guidance

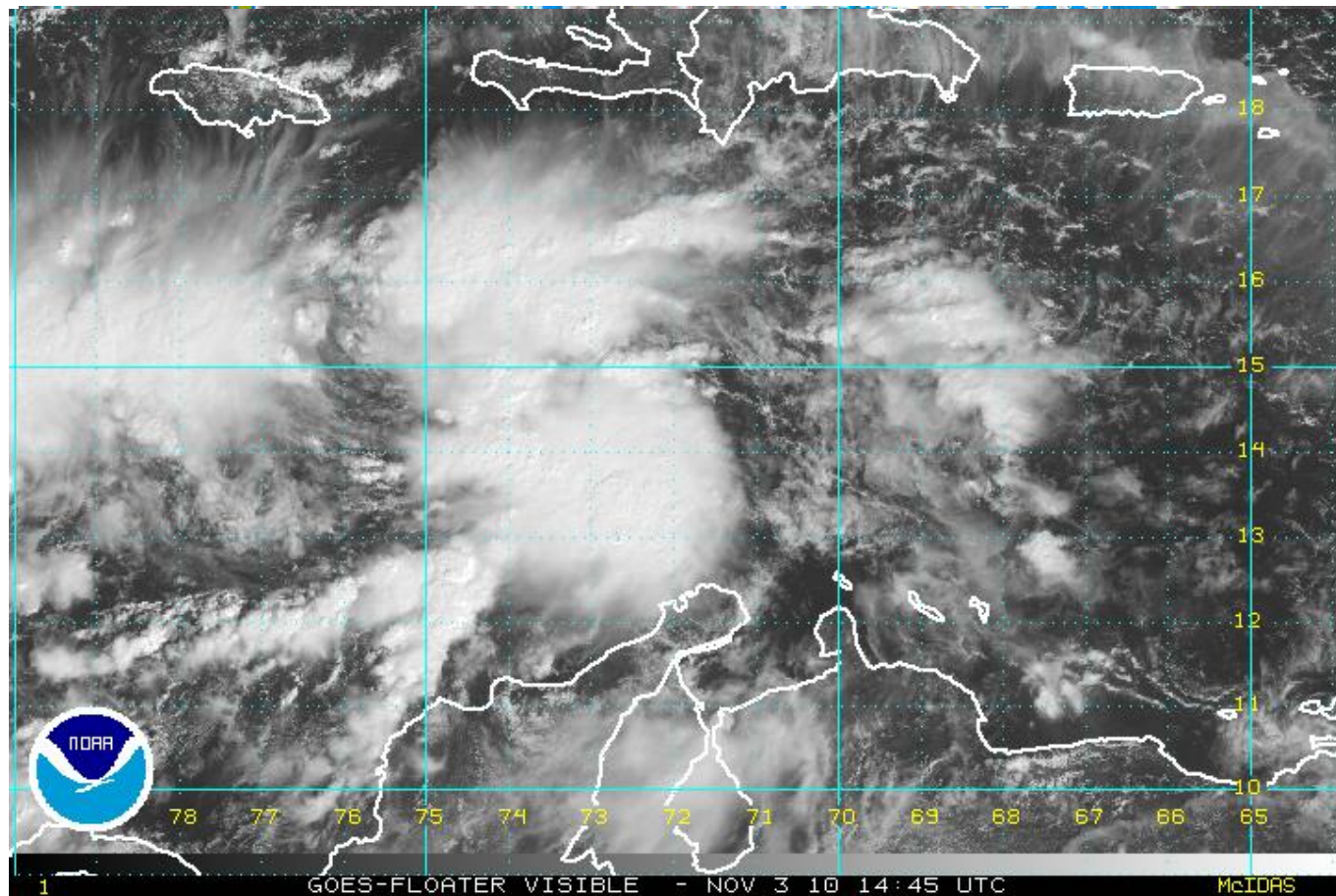
valid 0600 UTC, 03 November 2010



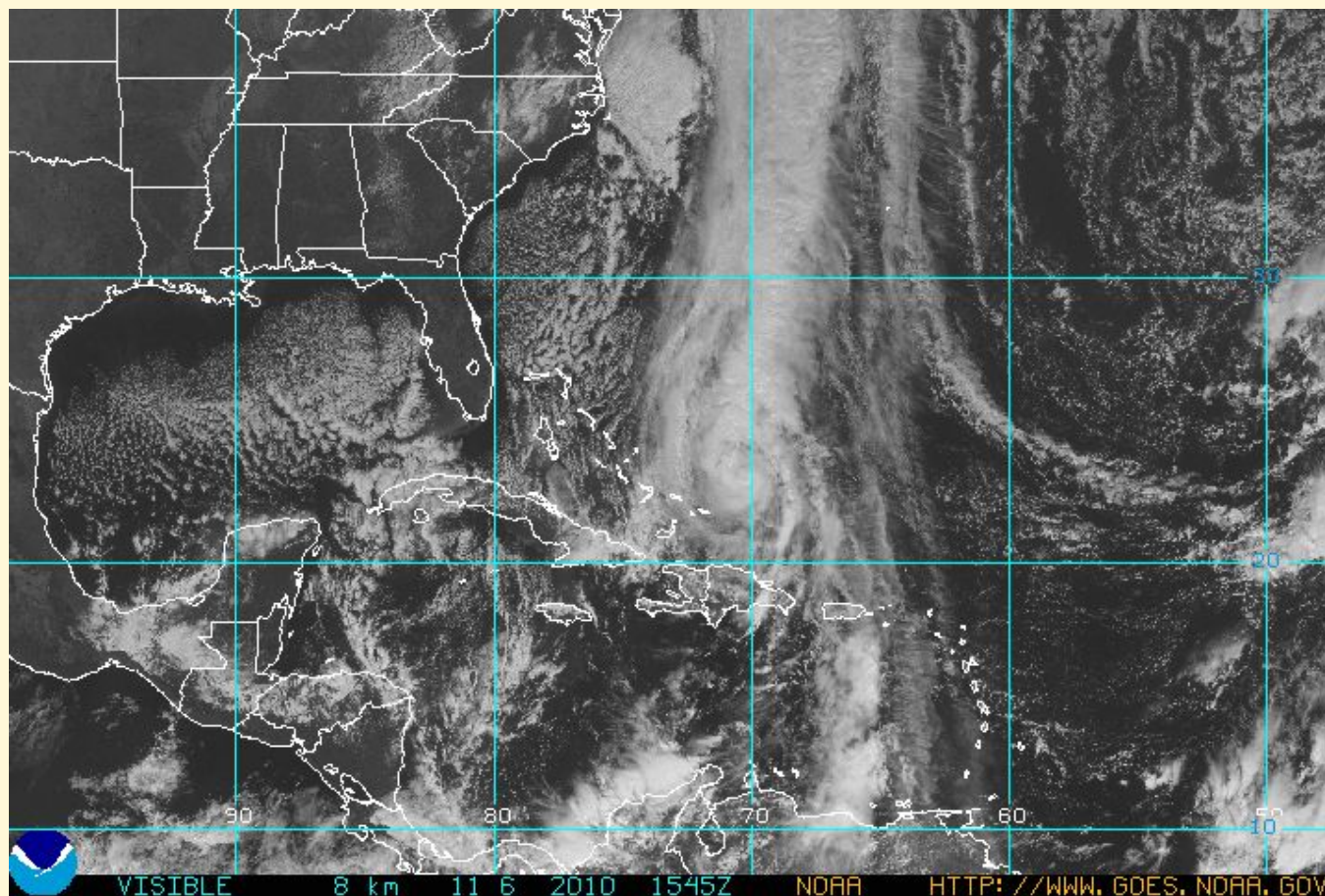
This plot does not display official storm information. Use for information purposes only.
DO NOT USE FOR LIFE AND DEATH DECISIONS!

Courtesy of J. Vigh (CSU)

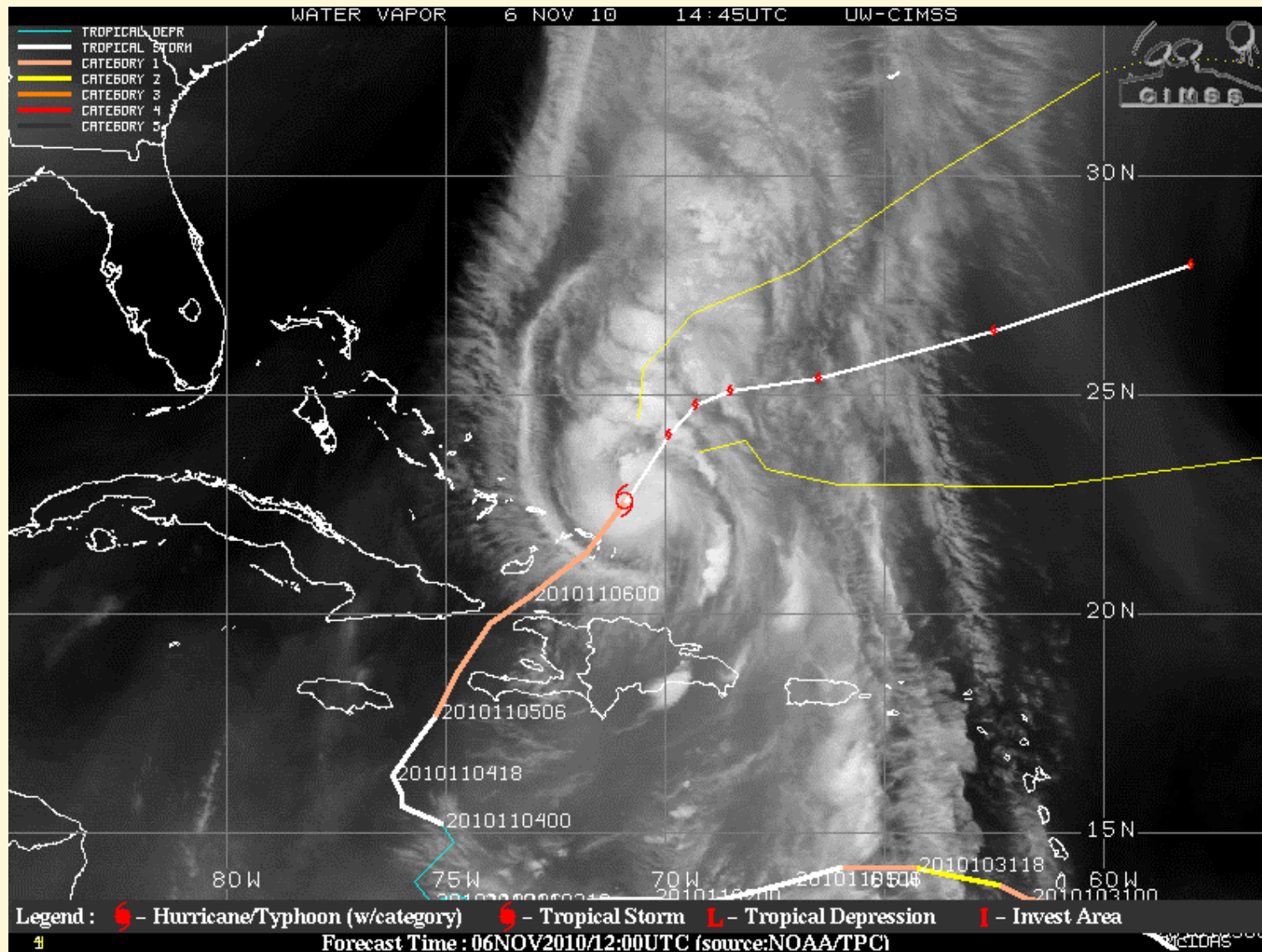
Satellite presentation of pre-Tomas 11/03 1445z



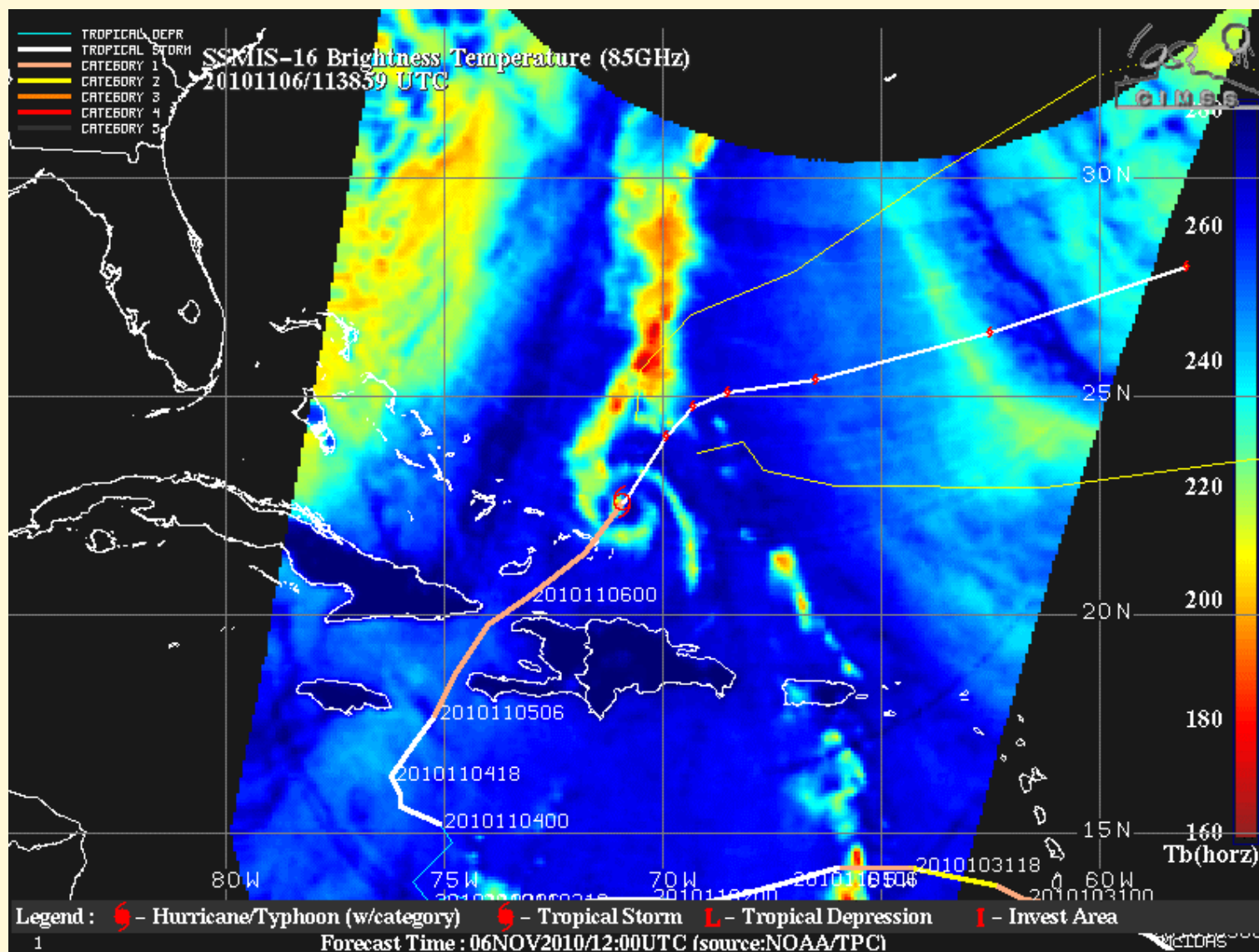
W. Atlantic GOES visible image 11/06 1545z



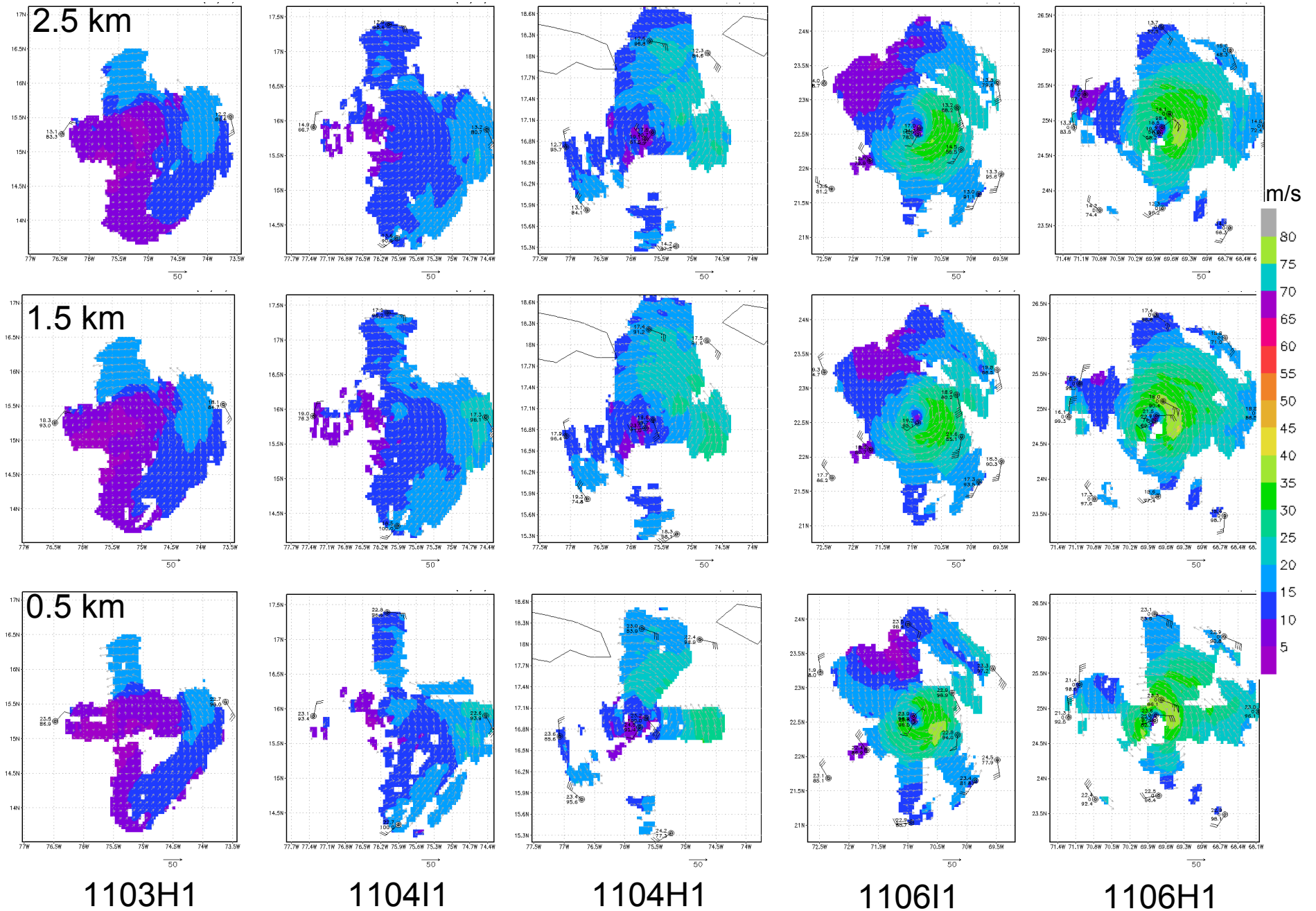
H. Tomas GOES water vapor image 11/06 1445z



SSMIS 85 GHz image 11/06 113859z



Tomas radar/sonde composite quick looks



Issues or concerns

- Heaters on sondes: on or off?
- Carry official passport just in case

Questions?

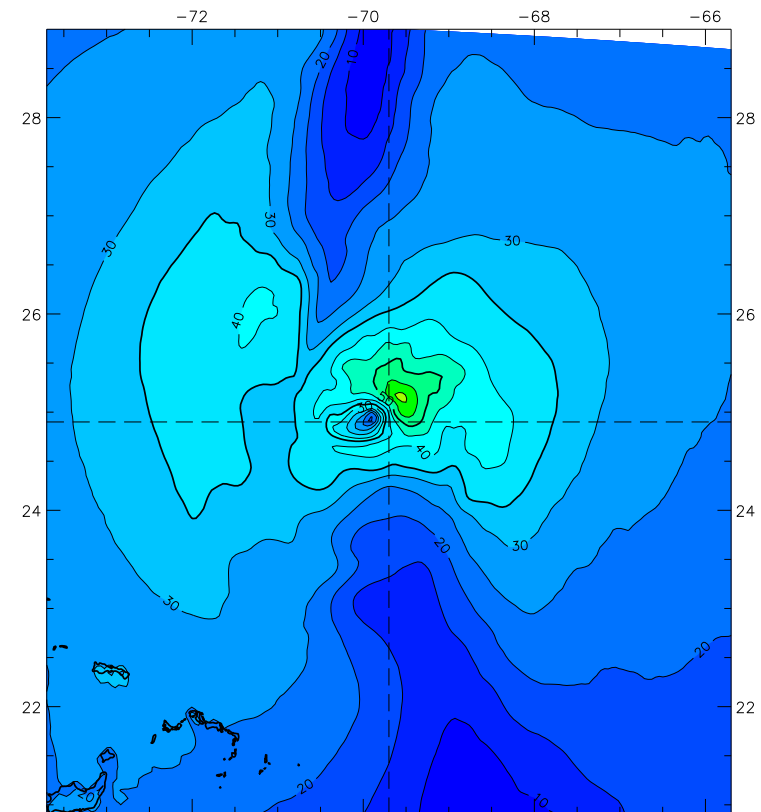
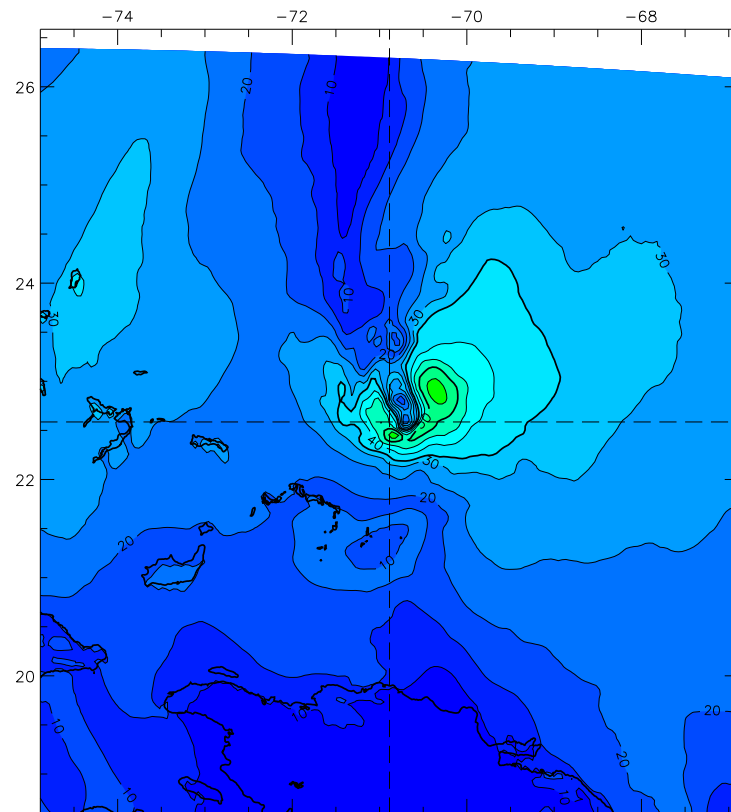
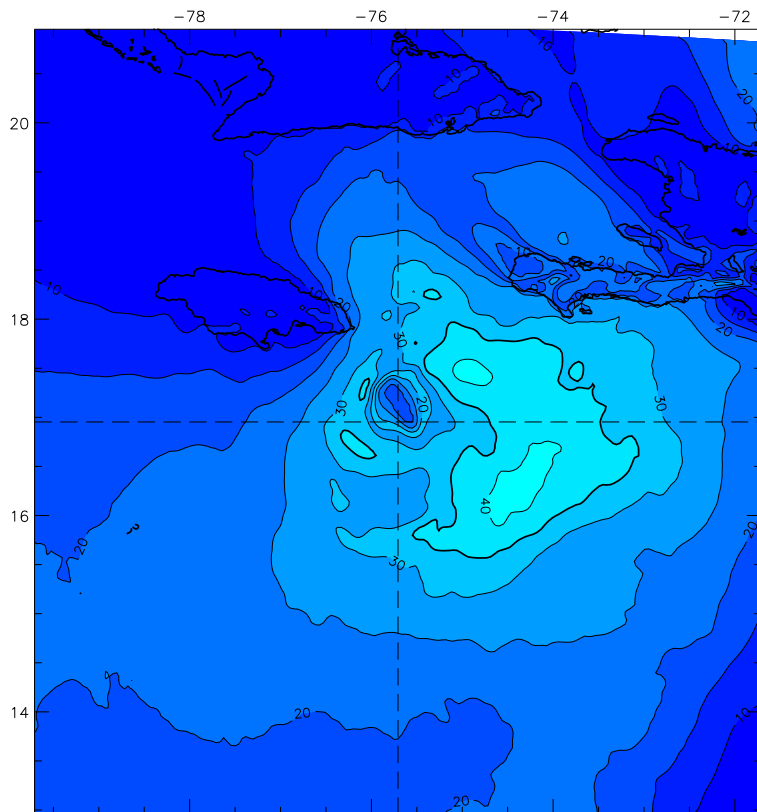
Comparison of HEDAS and H*Wind Analyses

11-05 00Z

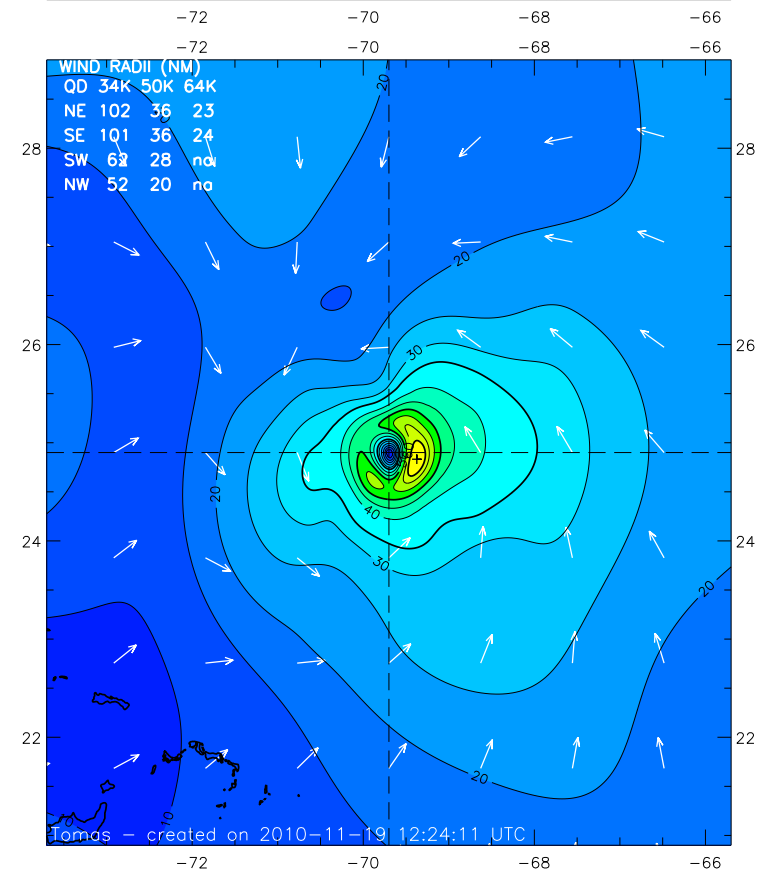
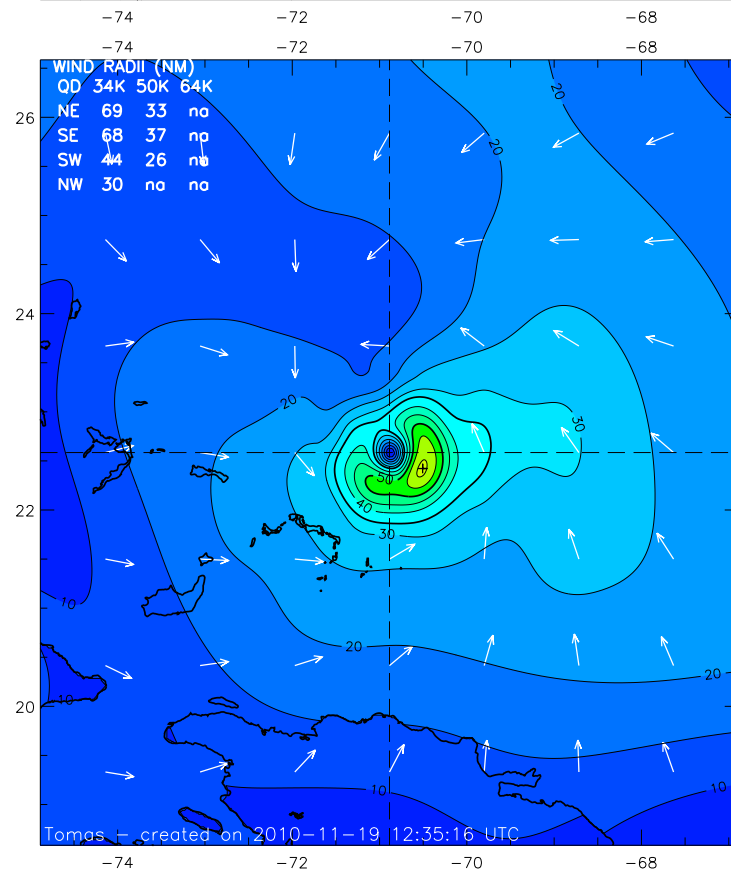
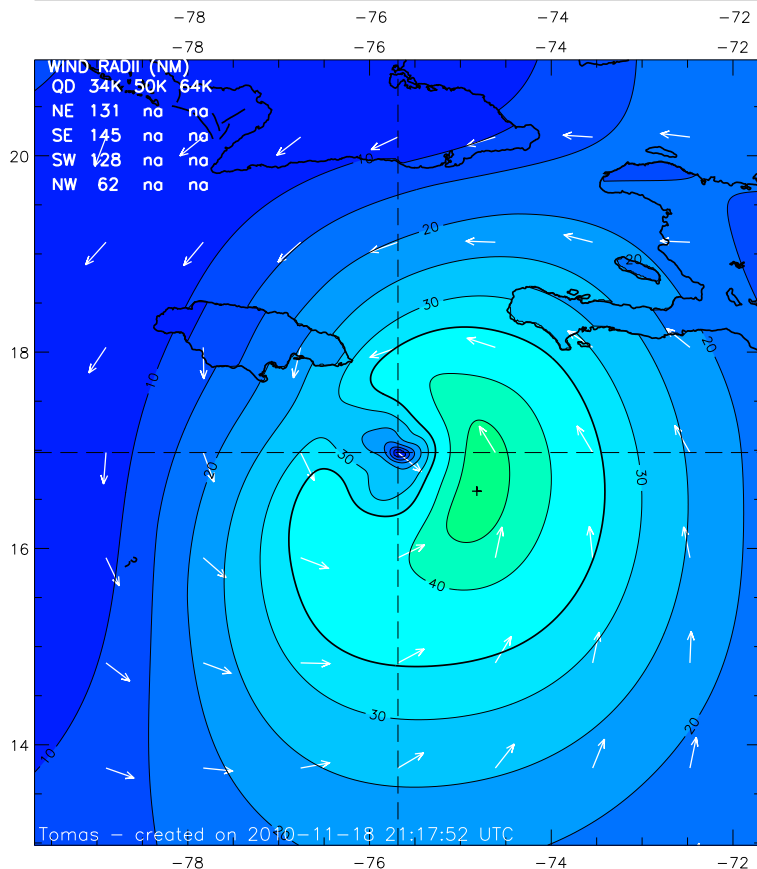
11-06 12Z

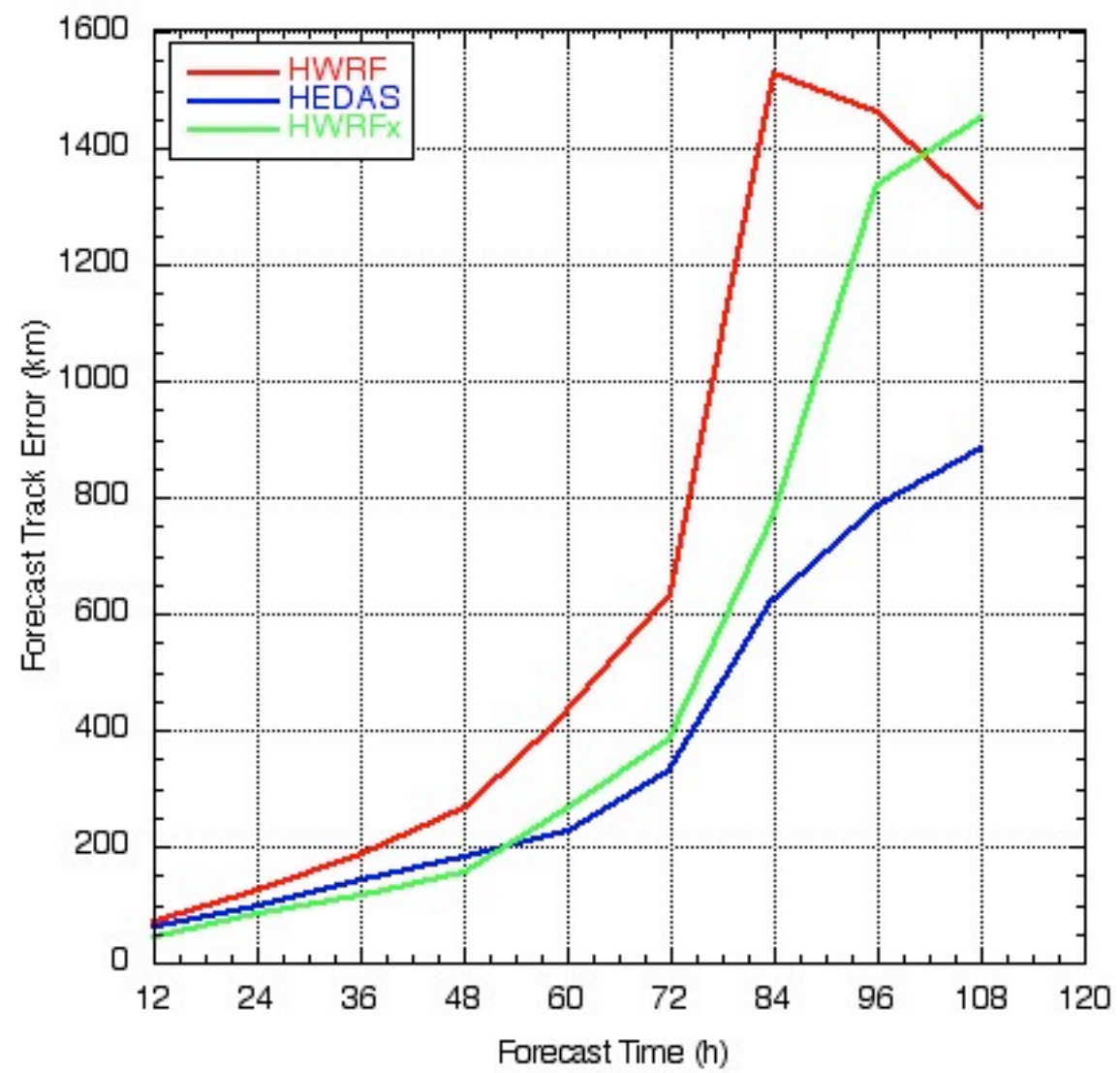
11-07 00Z

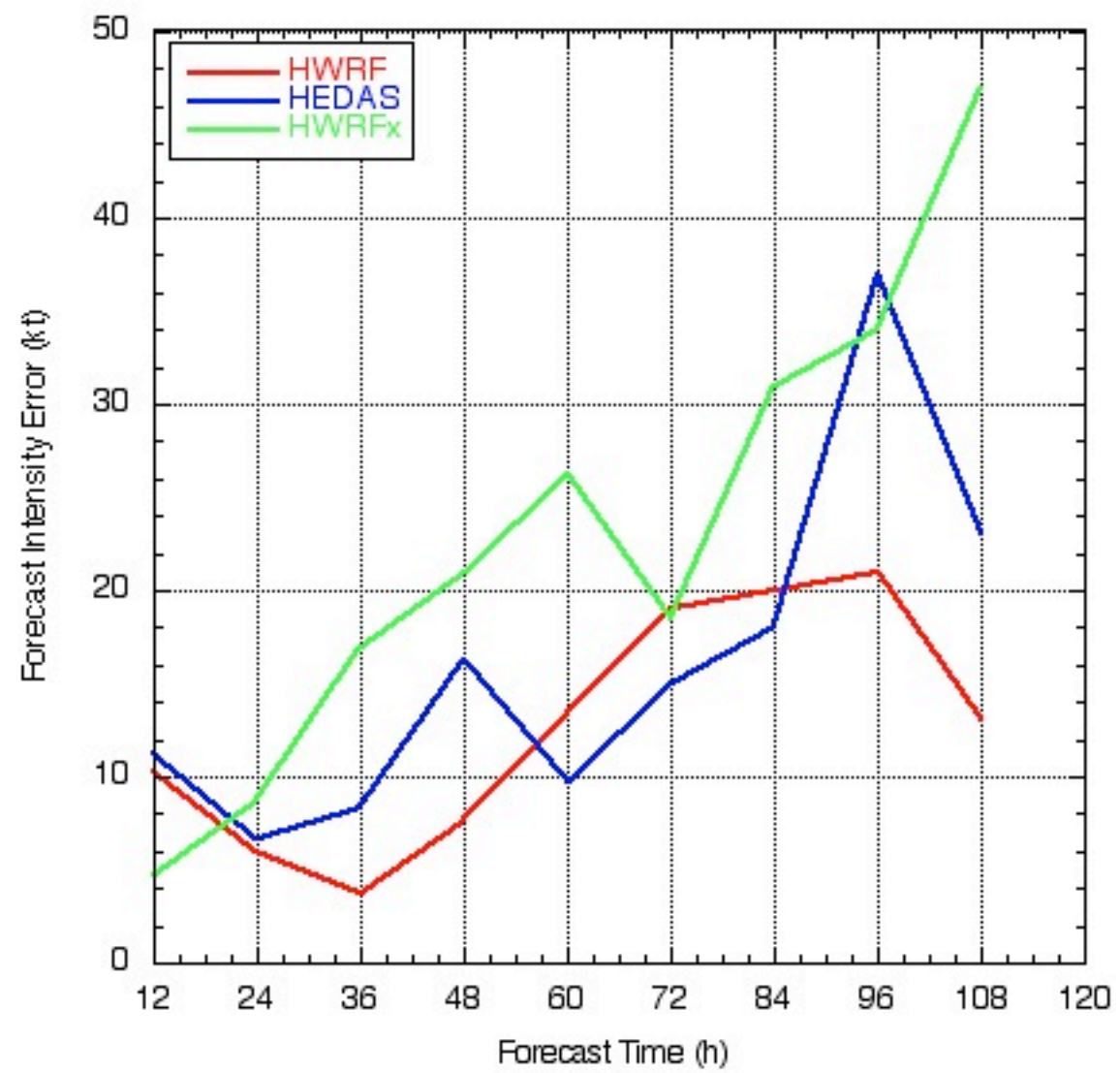
HEDAS



H*Wind

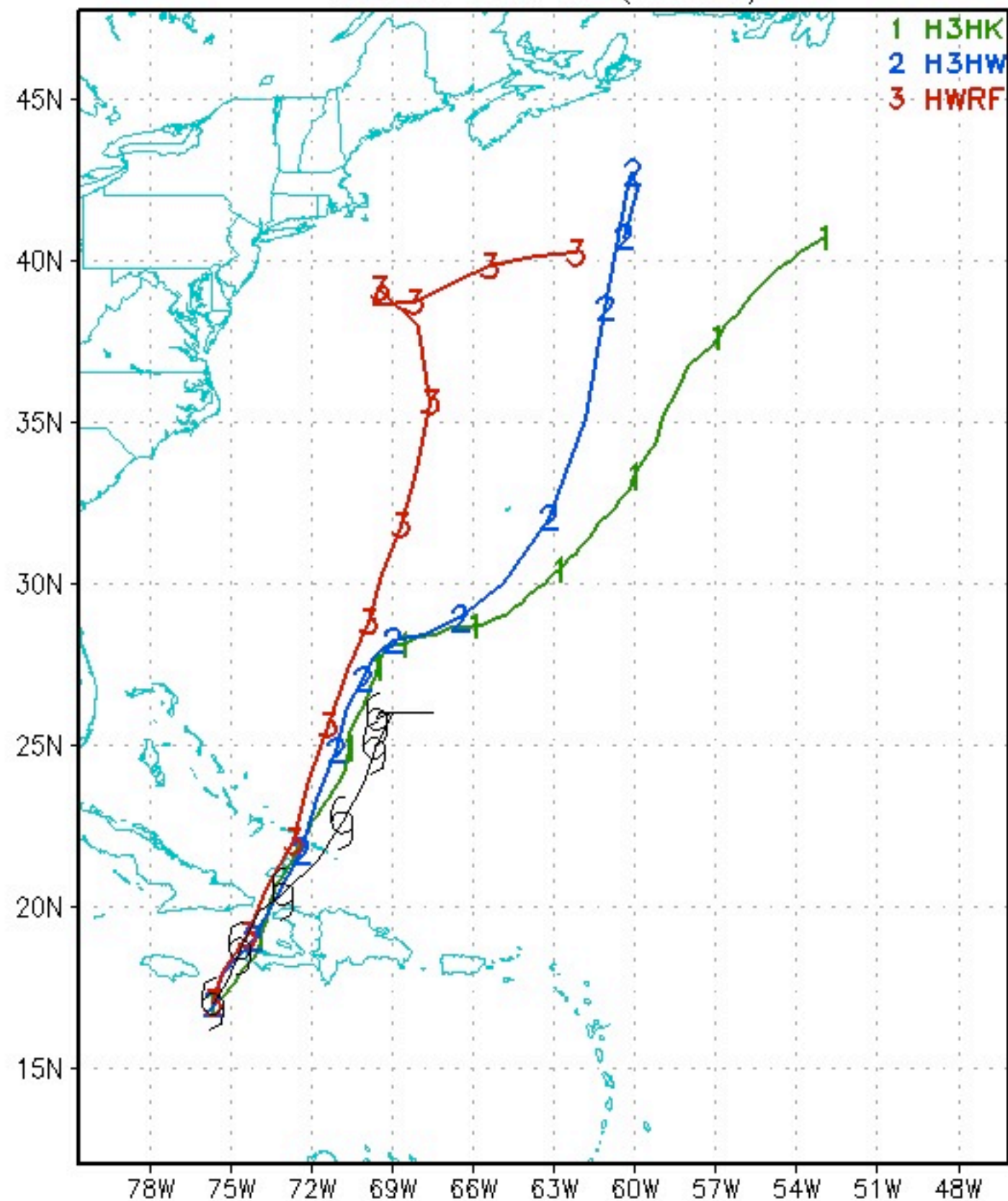




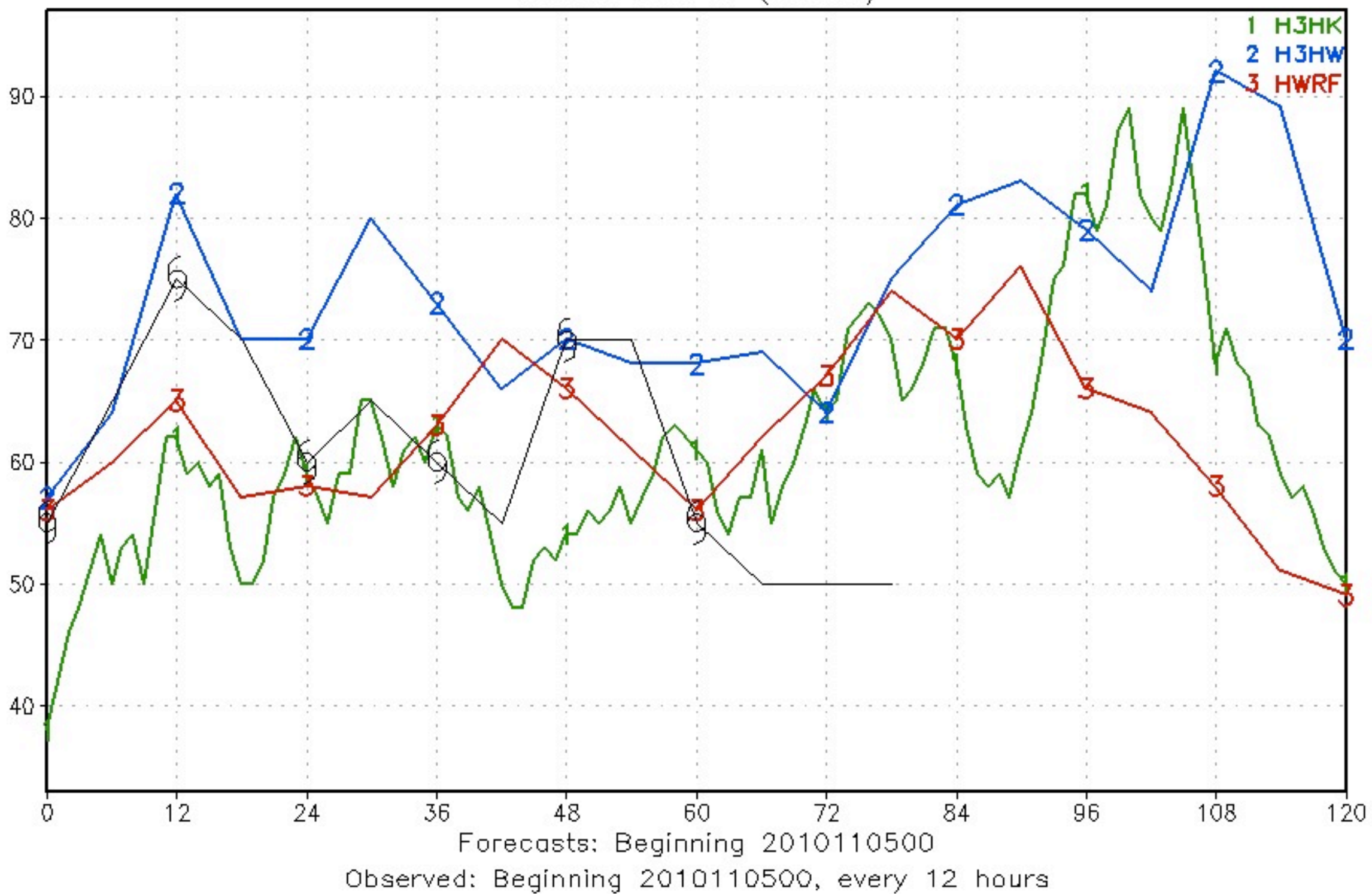


2010 Tropical Cyclone Tracks

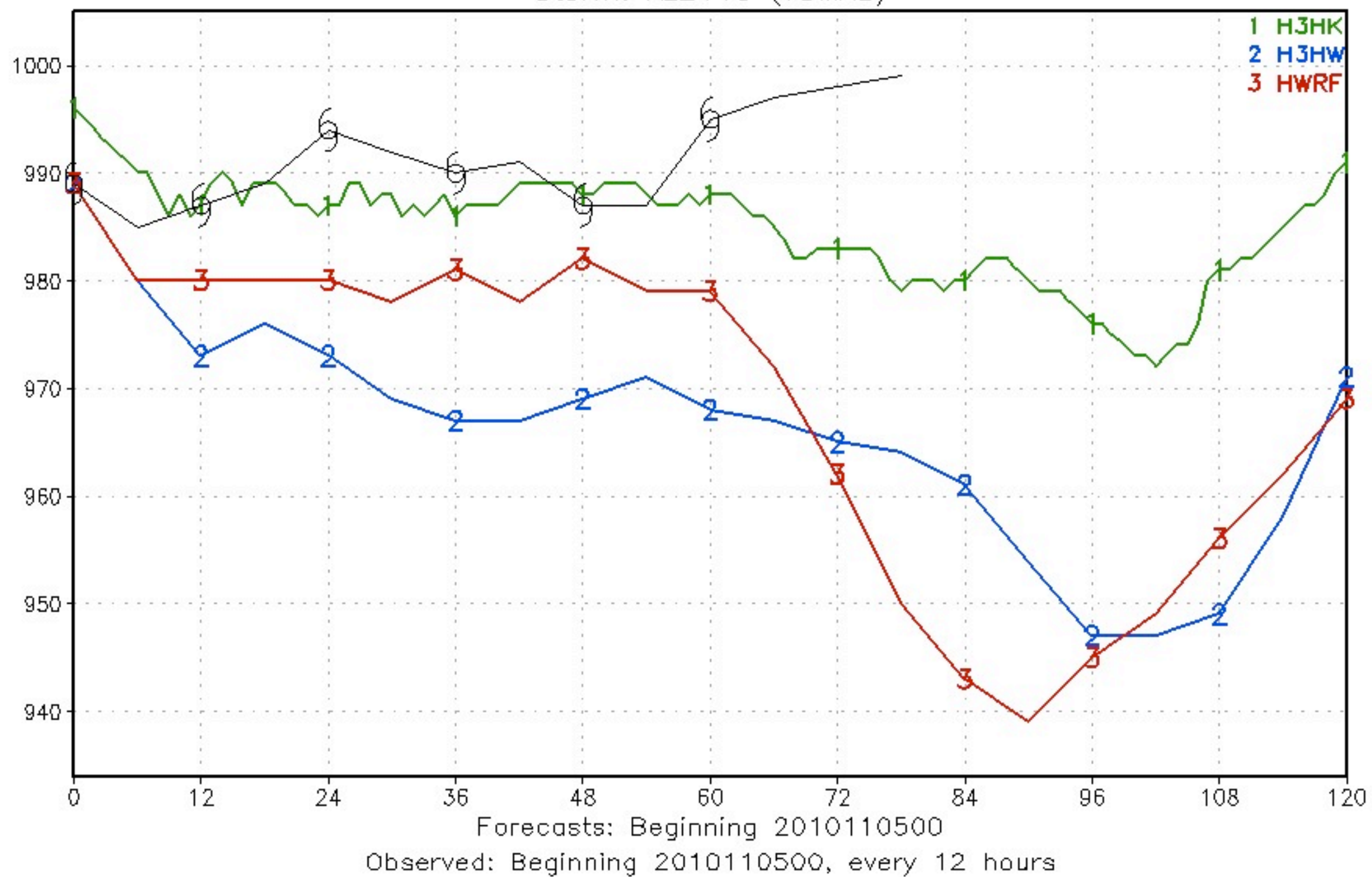
Storm: AL2110 (TOMAS)



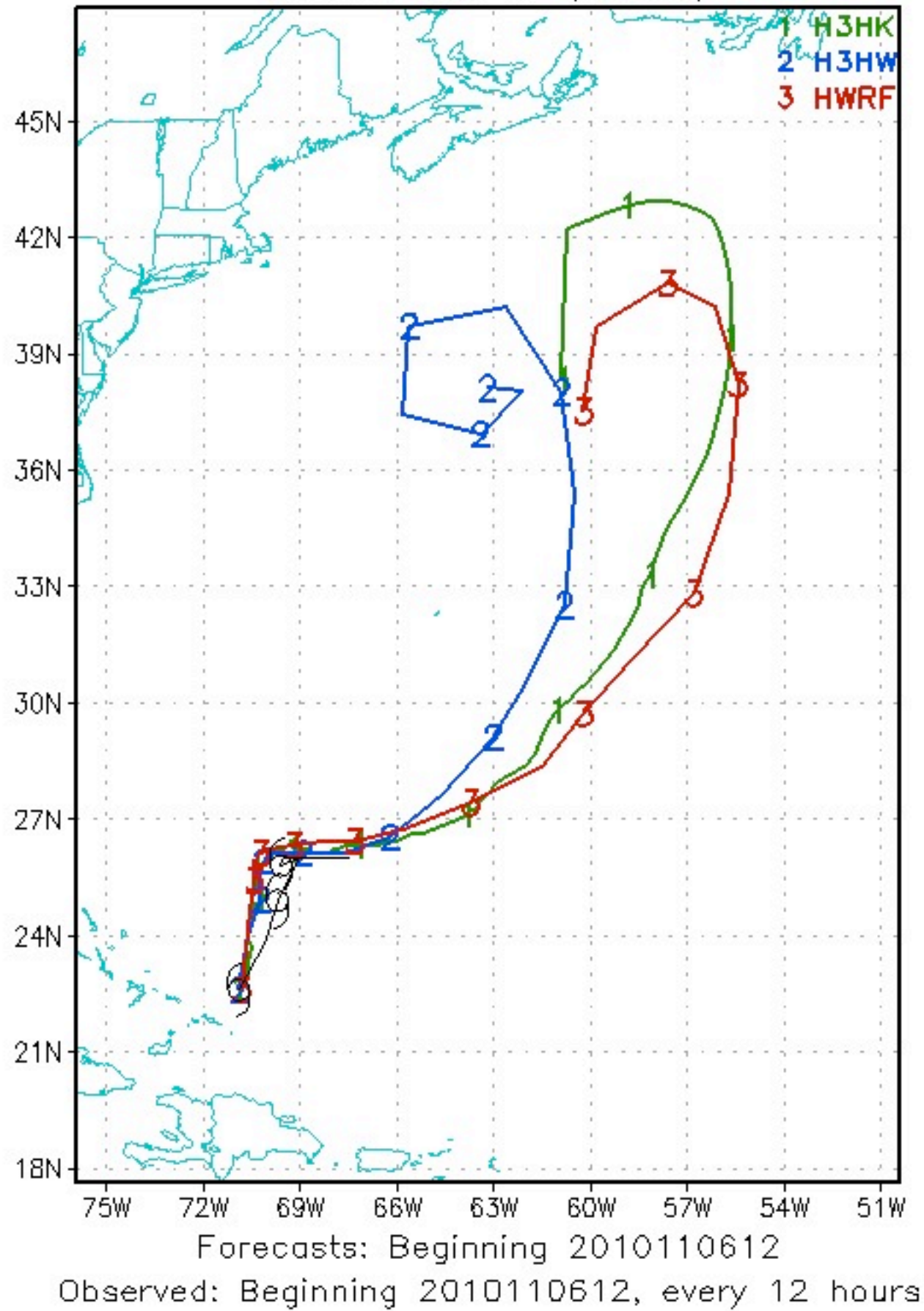
2010 Tropical Cyclone Tracks Storm: AL2110 (TOMAS)



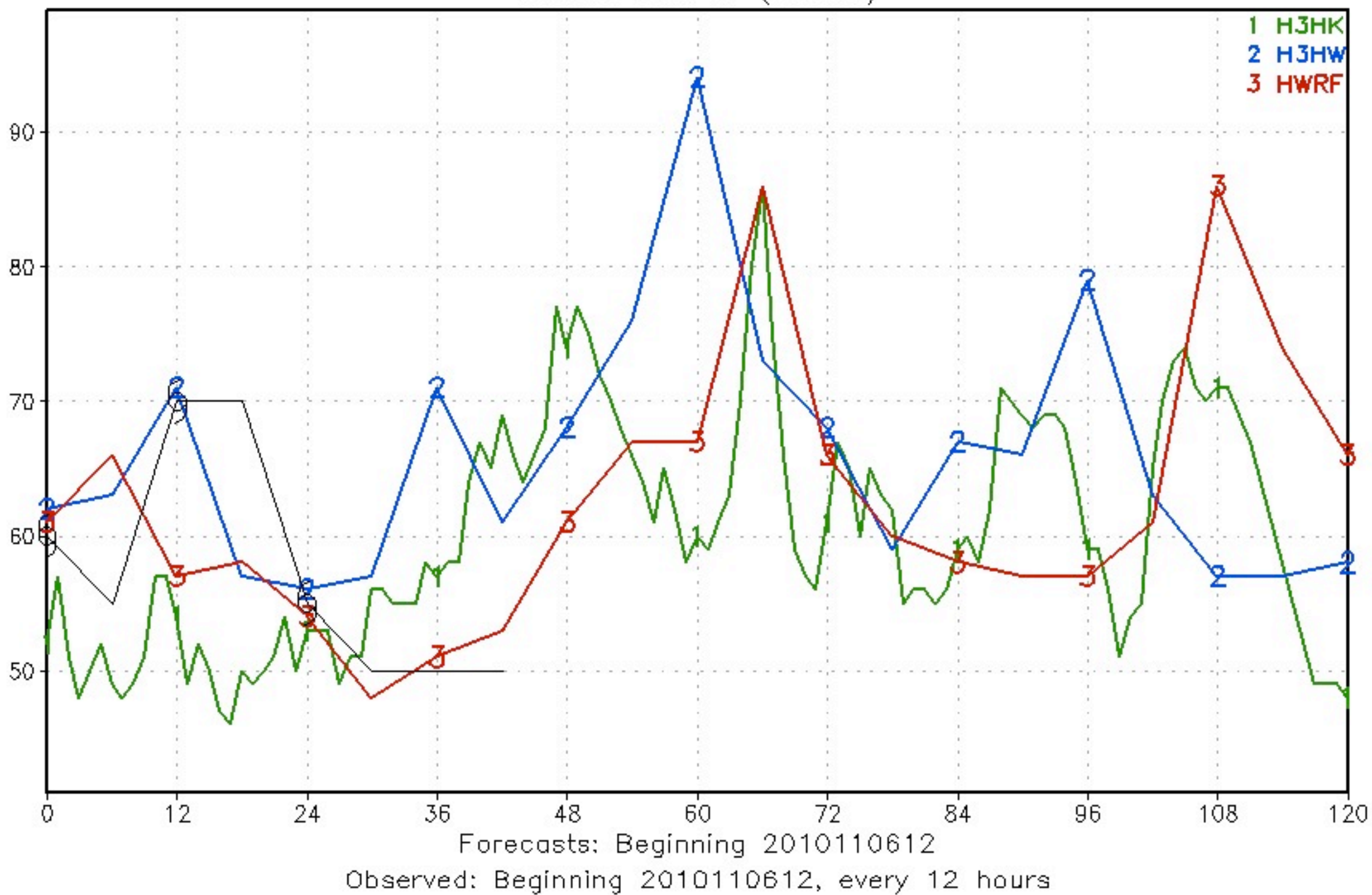
2010 Tropical Cyclone Tracks Storm: AL2110 (TOMAS)



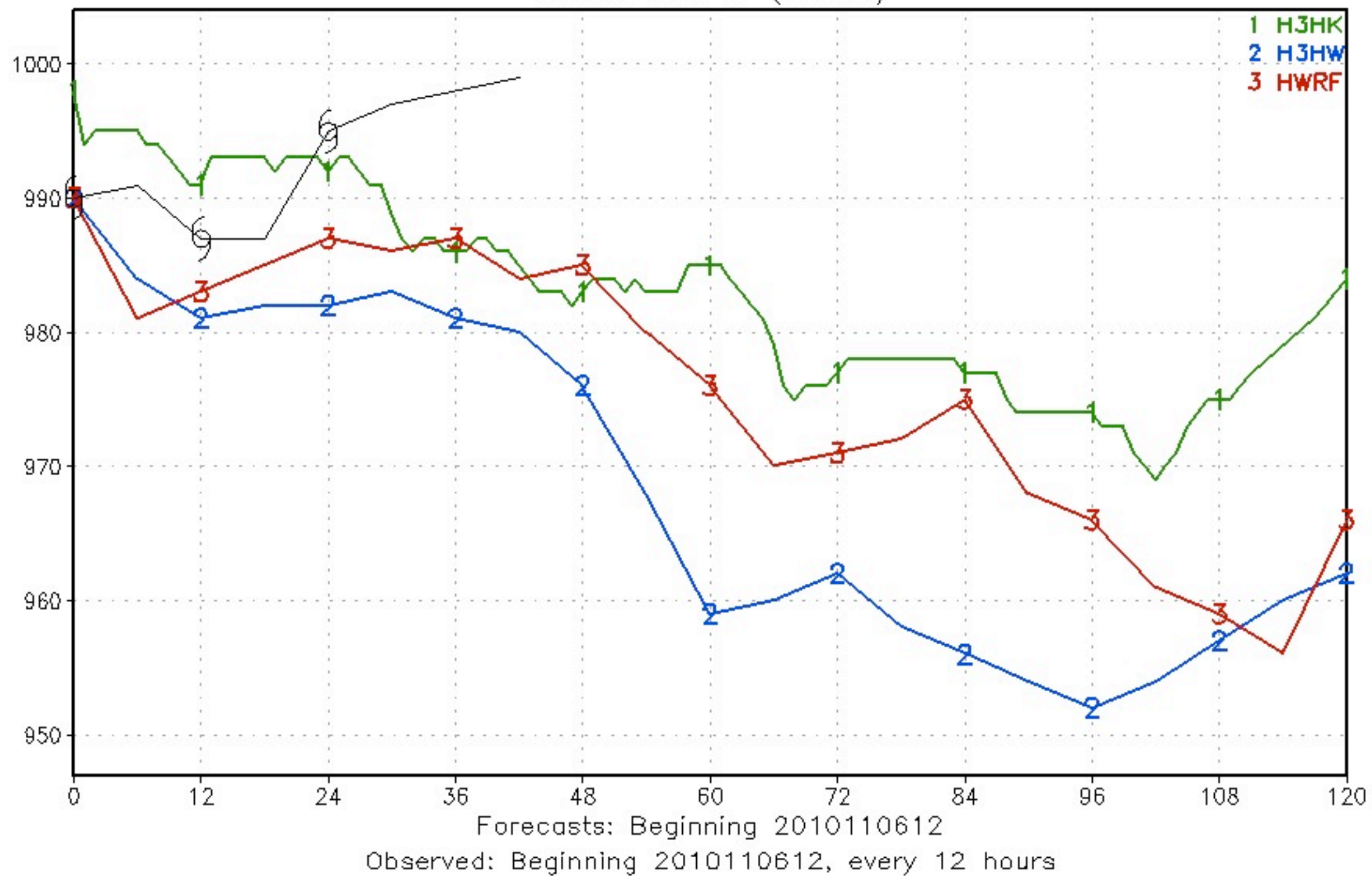
2010 Tropical Cyclone Tracks
Storm: AL2110 (TOMAS)



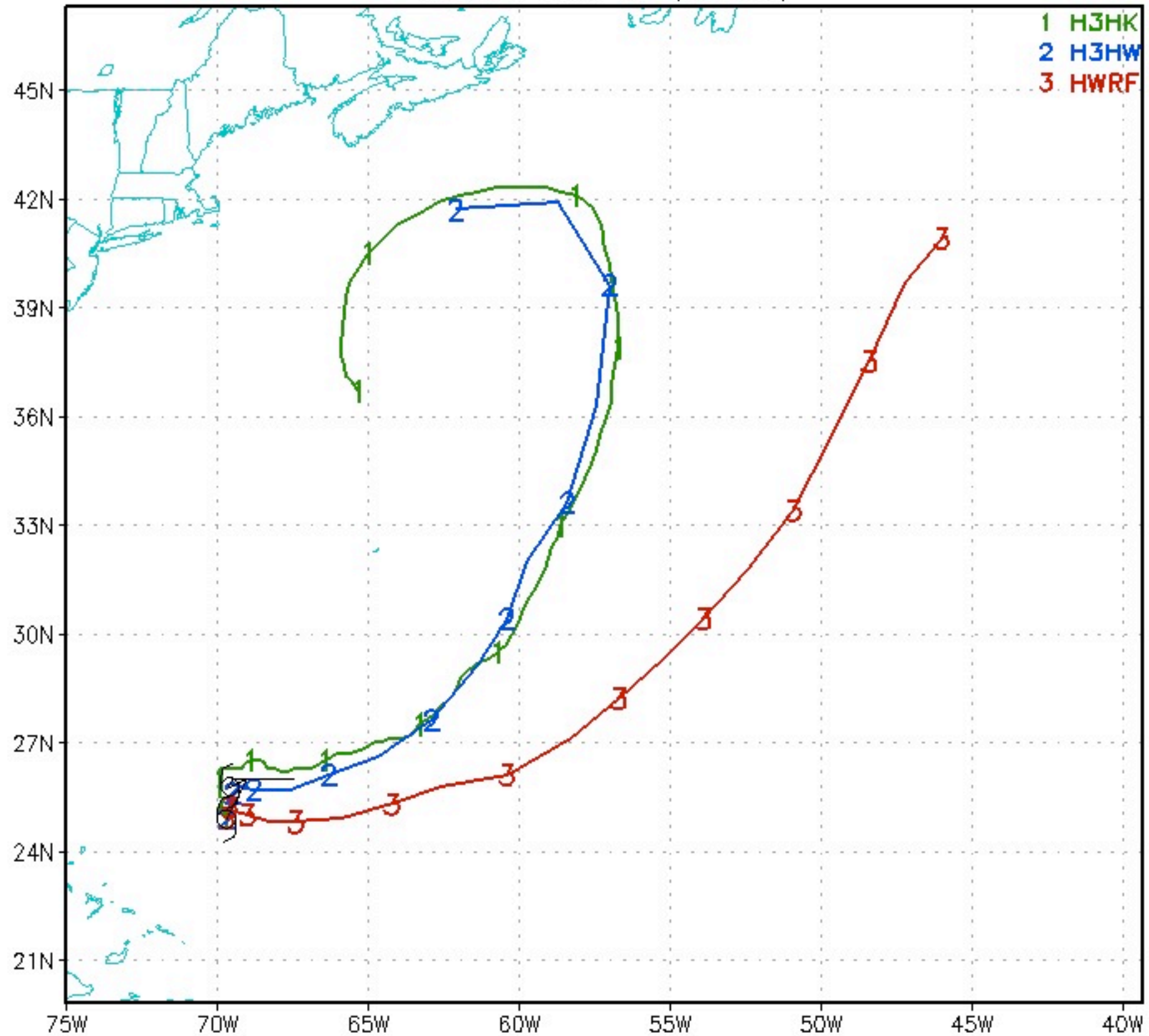
2010 Tropical Cyclone Tracks
Storm: AL2110 (TOMAS)



2010 Tropical Cyclone Tracks Storm: AL2110 (TOMAS)



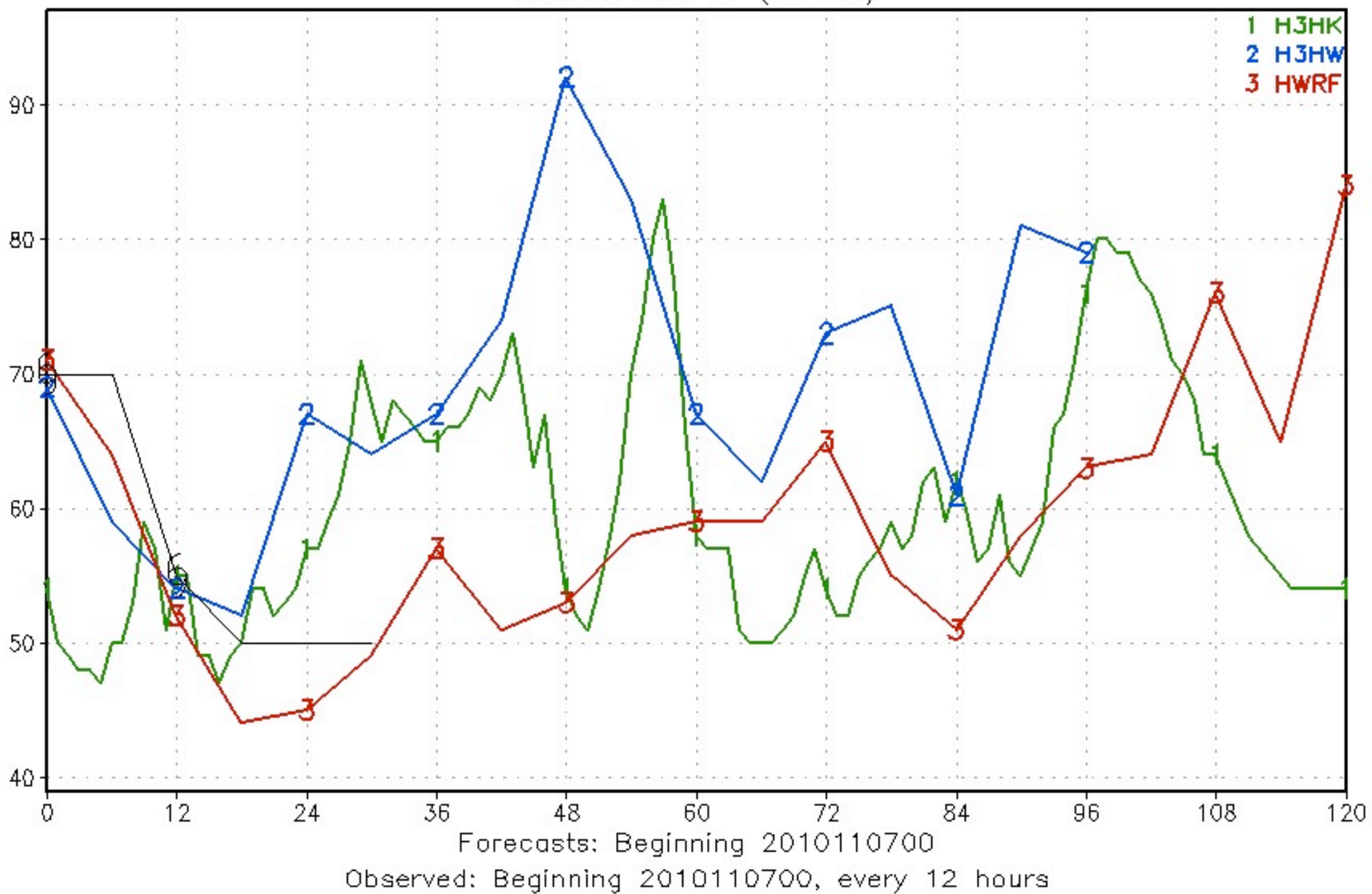
2010 Tropical Cyclone Tracks
Storm: AL2110 (TOMAS)



Forecasts: Beginning 2010110700

Observed: Beginning 2010110700, every 12 hours

2010 Tropical Cyclone Tracks
Storm: AL2110 (TOMAS)



2010 Tropical Cyclone Tracks Storm: AL2110 (TOMAS)

