

Date: 03 APR 1989

Depicted land should not be used for navigation.

Position lines are for the edges of warmer water. The thin streamline is an estimated location for the maximum current. Measured current speeds may be shown.

- (—) Position based on data 0 to 2 days old.
- (---) Position based on data 3 to 7 days old.
- (- - - -) Position based on data 8 days or more old.
- (.....) Mean position for month.

VK very cold  
K cold  
M mixed  
W warm

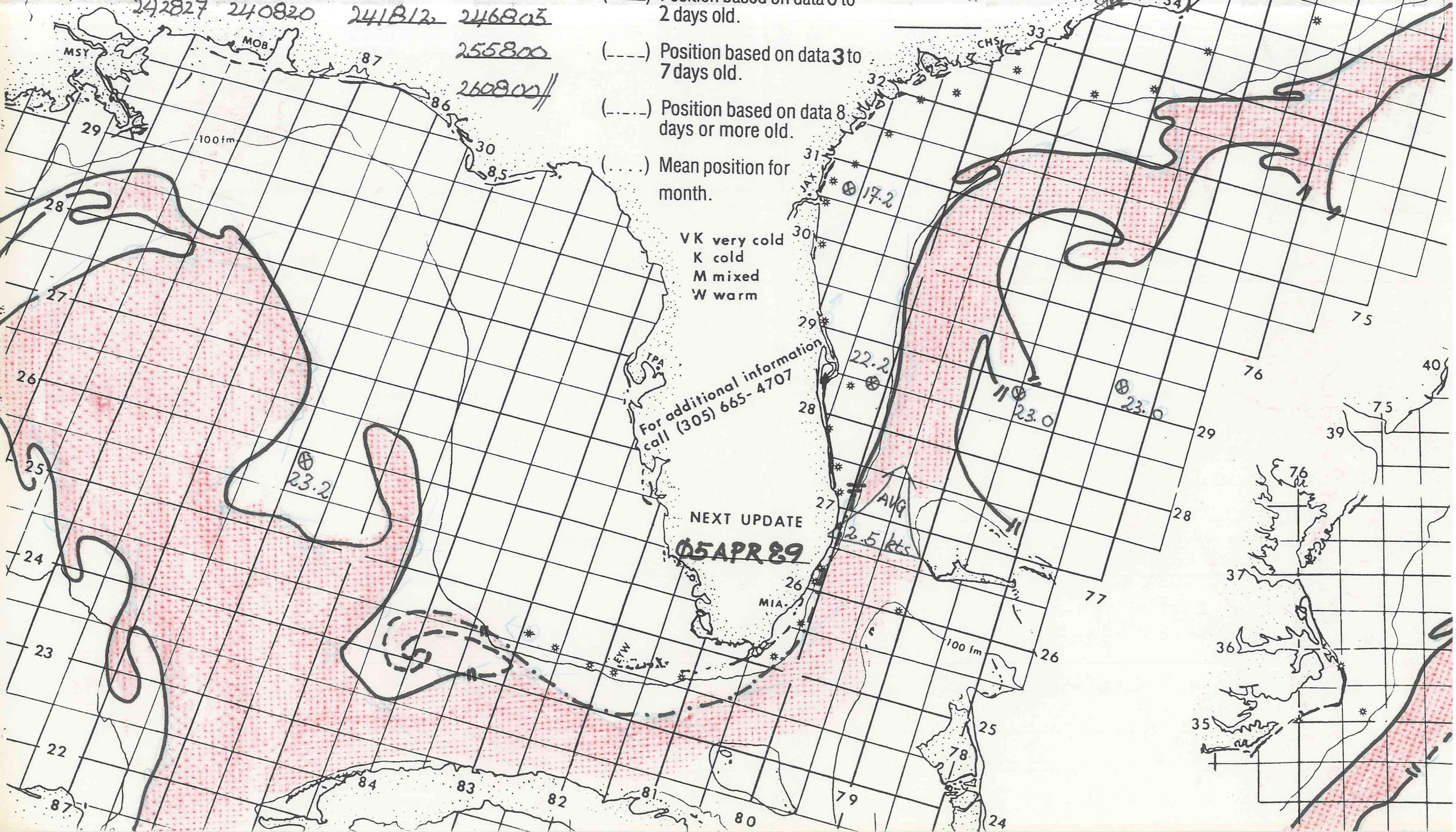
For additional information  
call (305) 665-4707

NEXT UPDATE

05 APR 89

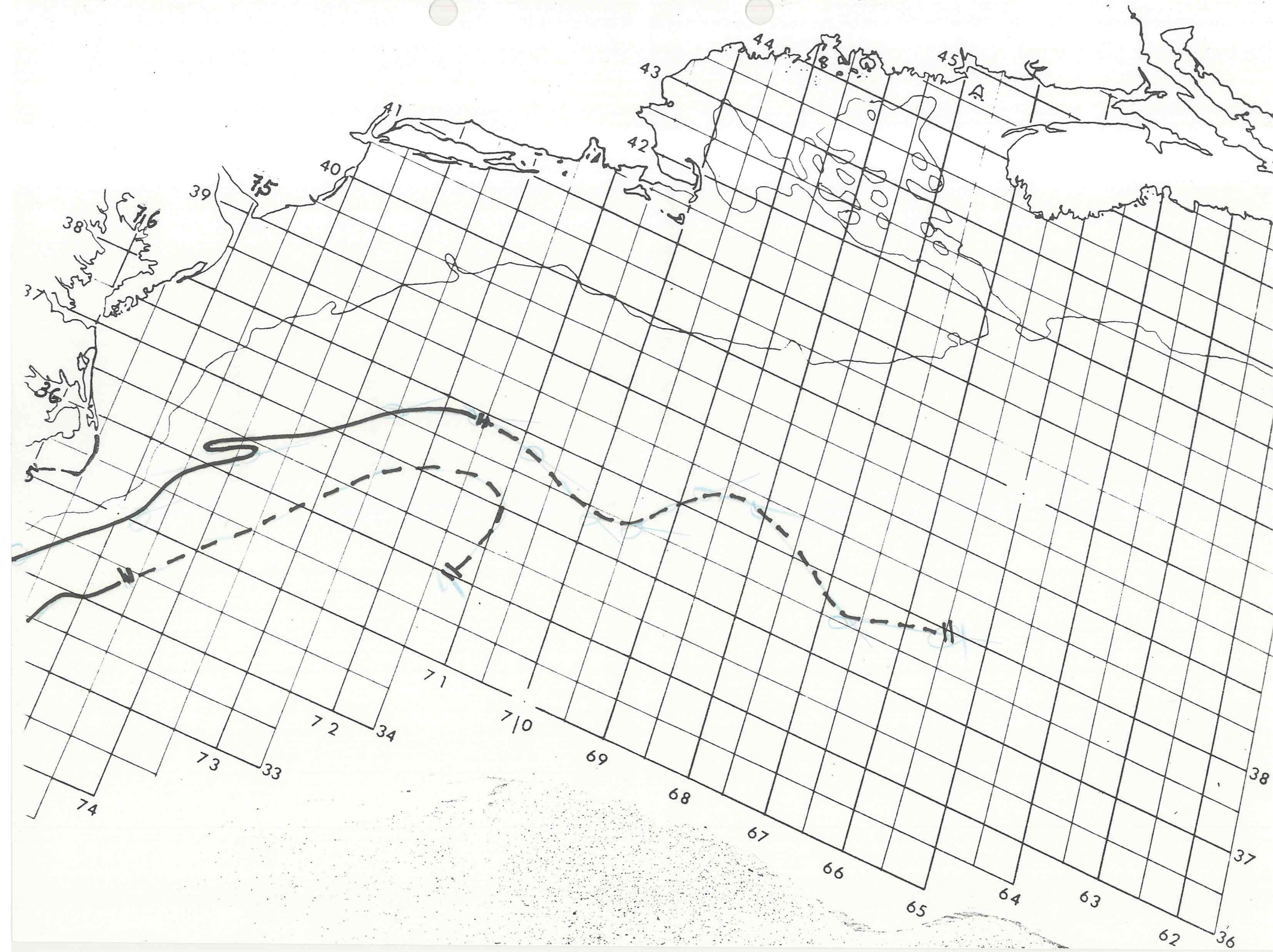
215862 220862 223862 227863 231865  
 237871 241872 243874 244882 249884  
 252887 259892 266895 270892 277886  
 278879 282875 276867 270862 264861  
 258864 255866 251866 252859 250855  
 253844 245845 239848 235841 240835  
 242827 240820 241812 246805  
 255800  
 260800//

270800 279799 288799 296801 306800  
 318791 320782 319777 321775 328778  
 332763 351748 358745 364739 36  
 376725 379716 378709 374699  
 375694 382687 376667  
 379655//





MIAMI SFSS ANALYSIS OF THE GULF STREAM: 03 APR 1989 PART B





215862 223862 231866 240872 246881  
 258889 268891 271896 274895 277881  
 284874 277865 274860 268858 260859  
 252865 251864 250850 255843 248842  
 240847 236844 235840 241833 242829  
 240819 241813 247804 254800 260800//

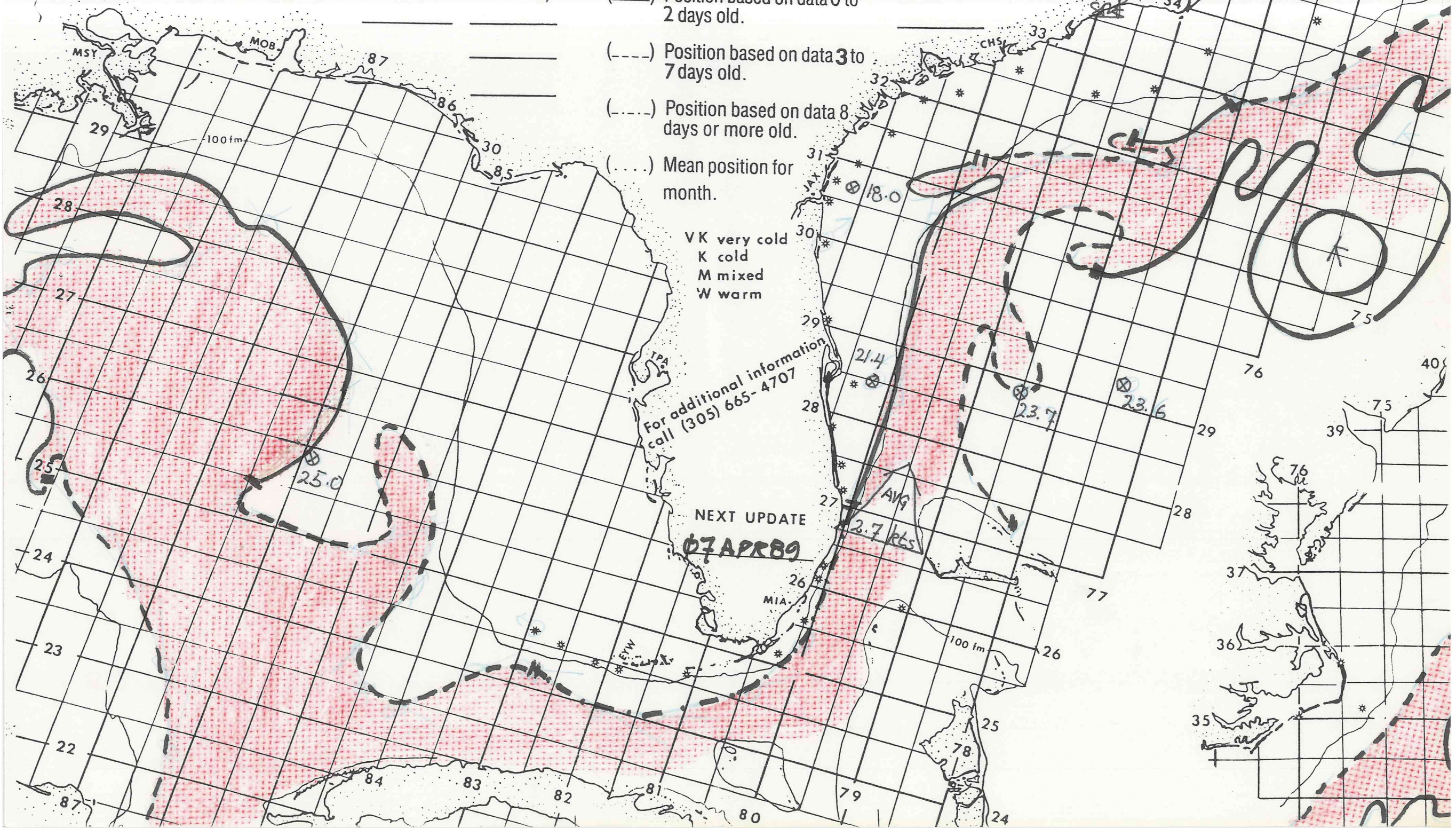
Date: 05 APR 1989

Depicted land should not be used for navigation.

Position lines are for the edges of warmer water. The thin streamline is an estimated location for the maximum current. Measured current speeds may be shown.

- (—) Position based on data 0 to 2 days old.
- (---) Position based on data 3 to 7 days old.
- (- - - -) Position based on data 8 days or more old.
- (.....) Mean position for month.

270800 285799 304801 318790 320776  
 329771 332764 350748 360742 365736  
 377722 380714 374698 375694 36  
 383684 383679 375665 379653//



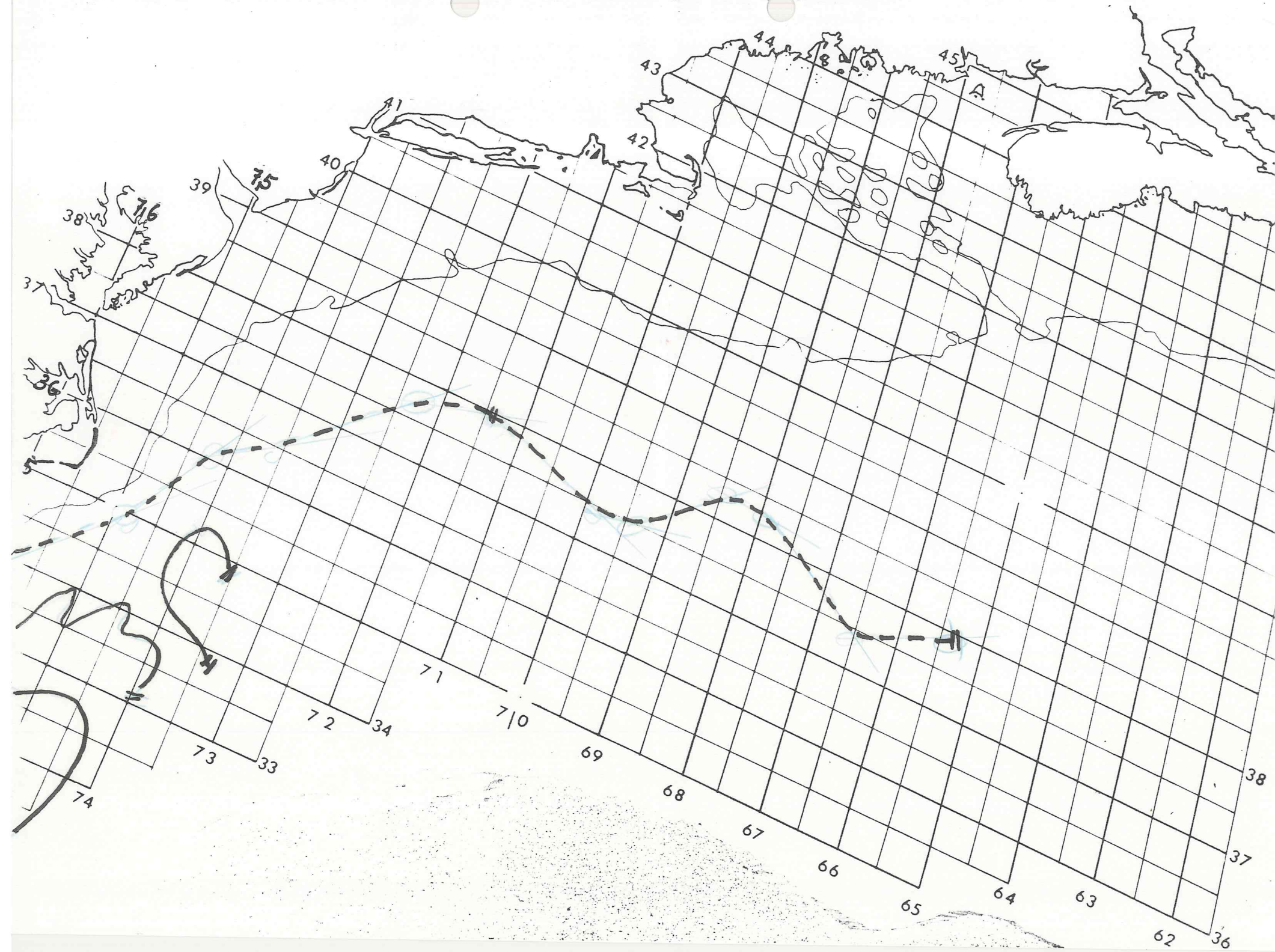
VK very cold  
 K cold  
 M mixed  
 W warm

For additional information  
 call (305) 665-4707

NEXT UPDATE  
 07 APR 89



MIAMI SFSS ANALYSIS OF THE GULF STREAM: 05 APR 1989 PART B





215862 223863 232867 241874 244879  
250883 253891 260892 267894 275893  
278885 276875 275867 271861 269859  
267853 260858 255861 250862 248860  
248852 252842 248842 239845 236840  
237830 238820 240814 247803 251801  
255800 260800//

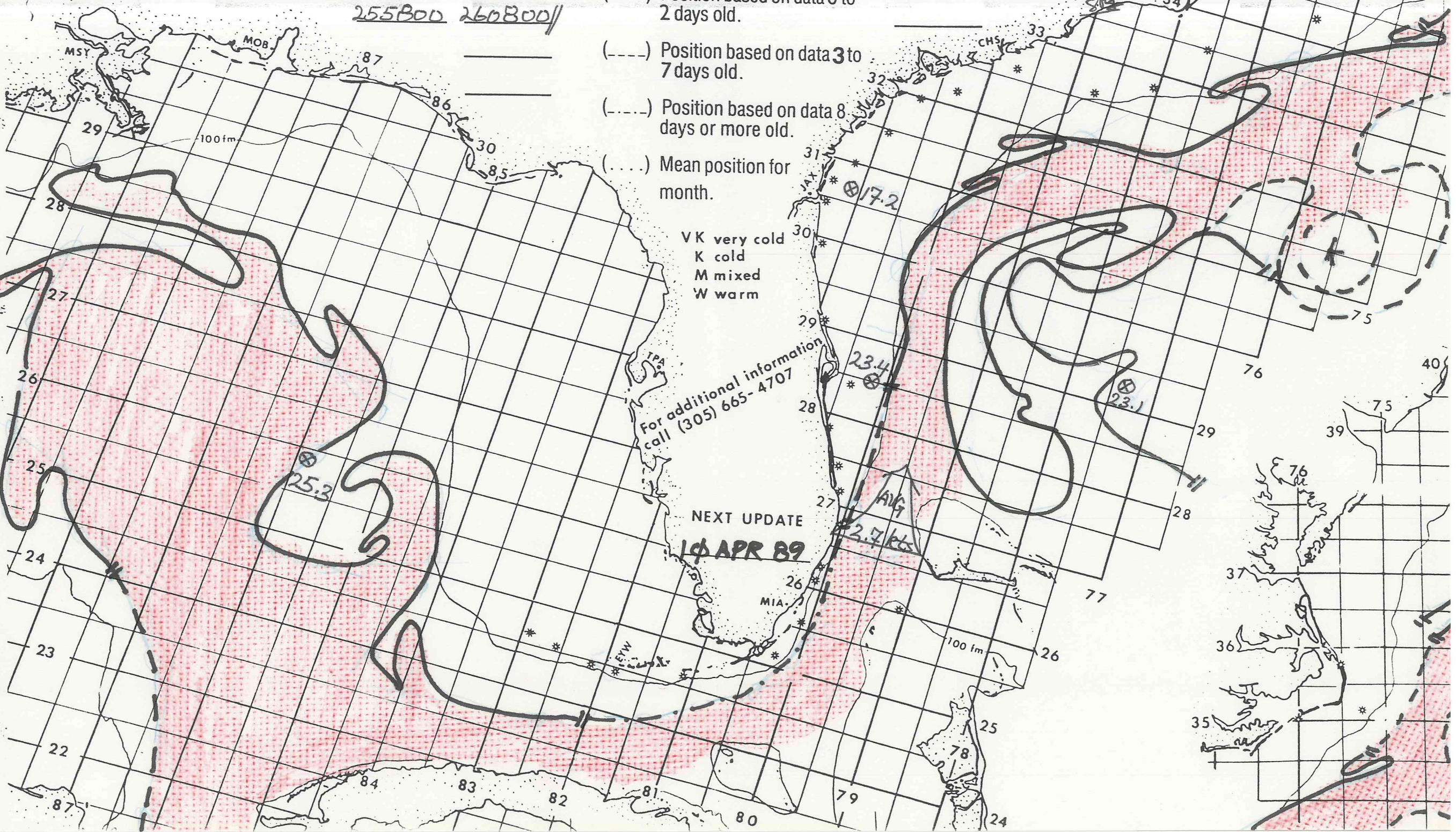
Date: 07 APR 1989

Depicted land should not be used for navigation.

Position lines are for the edges of warmer water. The thin streamline is an estimated location for the maximum current. Measured current speeds may be shown.

- (—) Position based on data 0 to 2 days old.
- (---) Position based on data 3 to 7 days old.
- (- - - -) Position based on data 8 days or more old.
- (.....) Mean position for month.

270800 291800 299802 306800 320787  
321776 329767 337765 345749 361744  
375727 381691 375686 387660 36  
381649 384640//



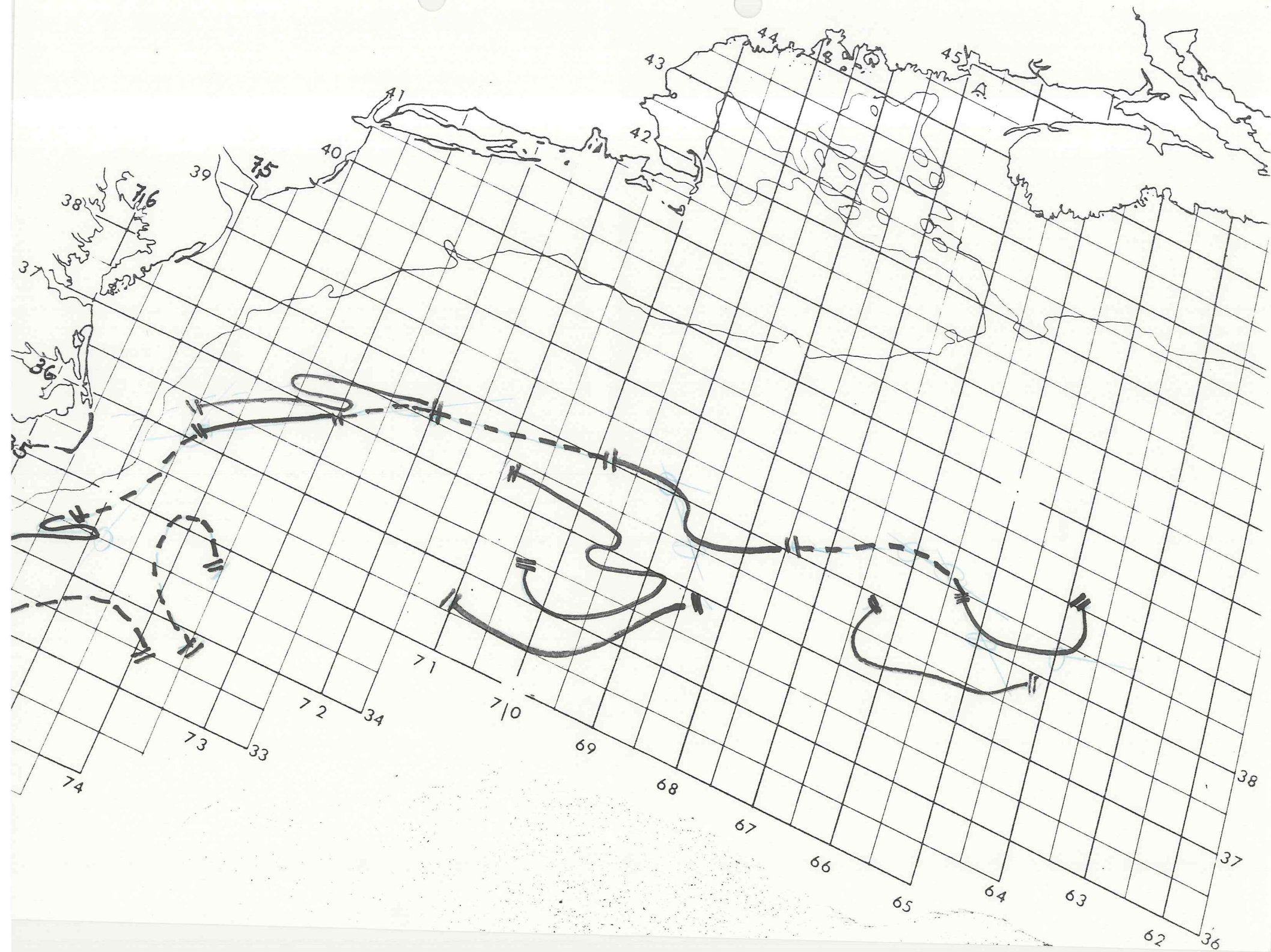
VK very cold  
 K cold  
 M mixed  
 W warm

For additional information  
 call (305) 665-4707

NEXT UPDATE  
 10 APR 89



MIAMI SFSS ANALYSIS OF THE GULF STREAM: 07 APR 1989 PART B





Date: 10 APR 1989

Depicted land should not be used for navigation.

Position lines are for the edges of warmer water. The thin streamline is an estimated location for the maximum current. Measured current speeds may be shown.

- (—) Position based on data 0 to 2 days old.
- (---) Position based on data 3 to 7 days old.
- (- - - -) Position based on data 8 days or more old.
- (. . . .) Mean position for month.

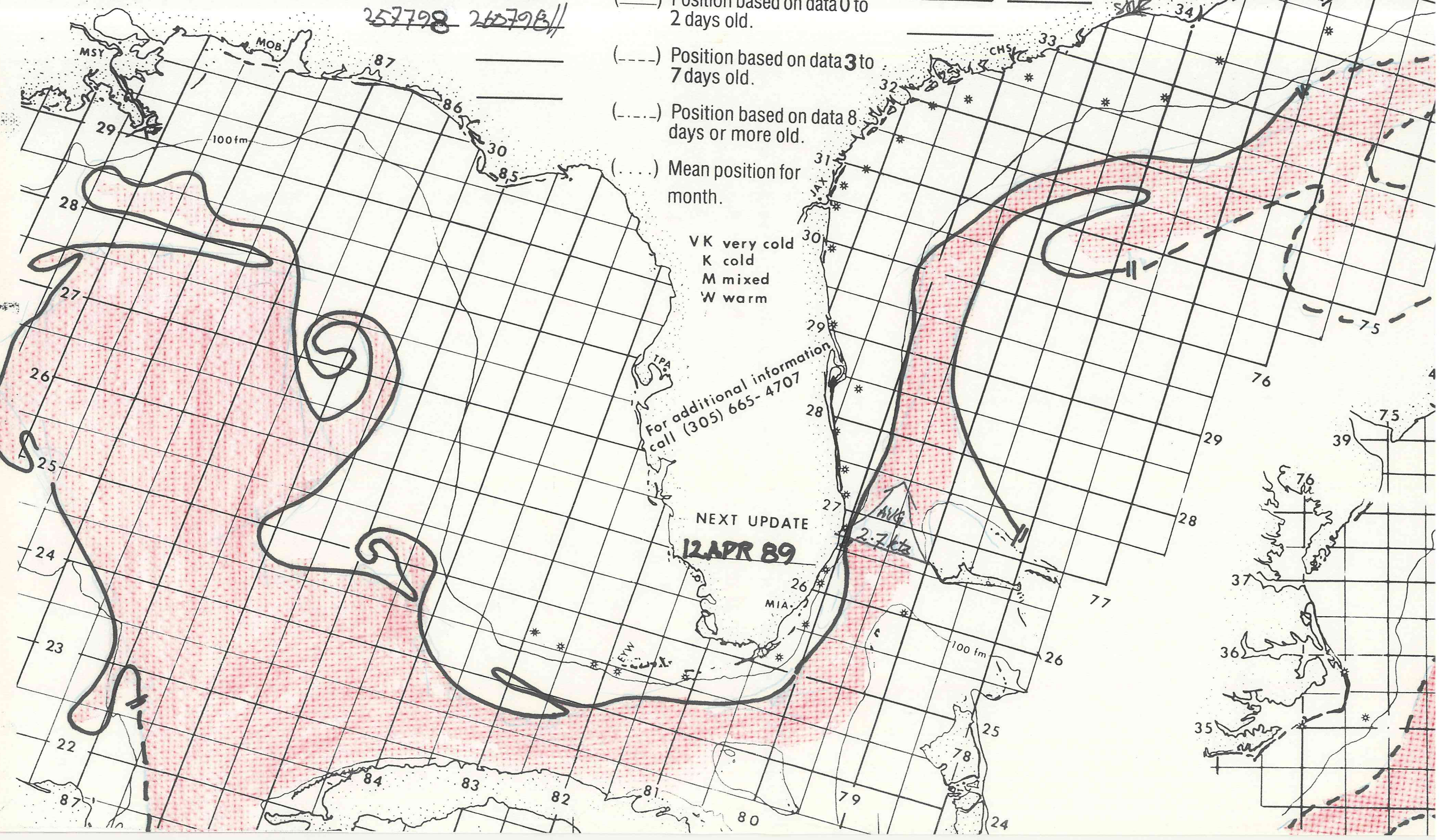
VK very cold  
K cold  
M mixed  
W warm

For additional information  
call (305) 665-4707

NEXT UPDATE  
**12 APR 89**

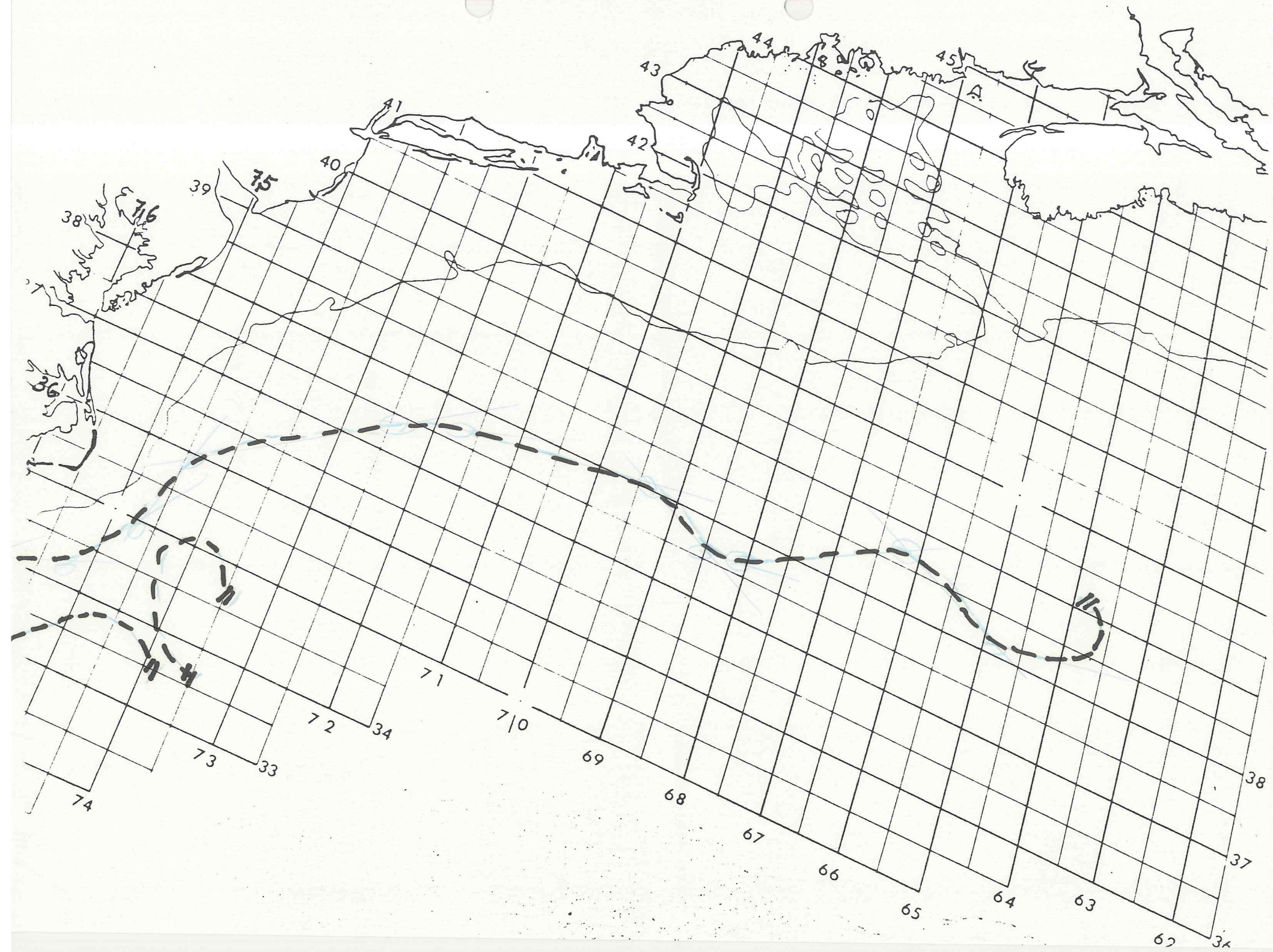
215862 220864 229868 238875 245883  
 251888 257896 264896 267894 276892  
 278885 278875 279869 273867 267864  
 264860 259856 255858 250862 247861  
 246856 248849 246842 242840 238835  
 237827 238823 242816 244807 247801  
 257798 260798//

270800 278799 301802 314793 321781  
 322774 326769 335765 339760 343752  
 350747 360744 374723 380694 36  
 376684 377681 387662 382649  
 383640//





MIAMI SFSS ANALYSIS OF THE GULF STREAM: 10 APR 1989 PART B





Date: 12 APR 1989

Depicted land should not be used for navigation.

Position lines are for the edges of warmer water. The thin streamline is an estimated location for the maximum current. Measured current speeds may be shown.

- (——) Position based on data 0 to 2 days old.
- (- - -) Position based on data 3 to 7 days old.
- (.....) Position based on data 8 days or more old.
- (....) Mean position for month.

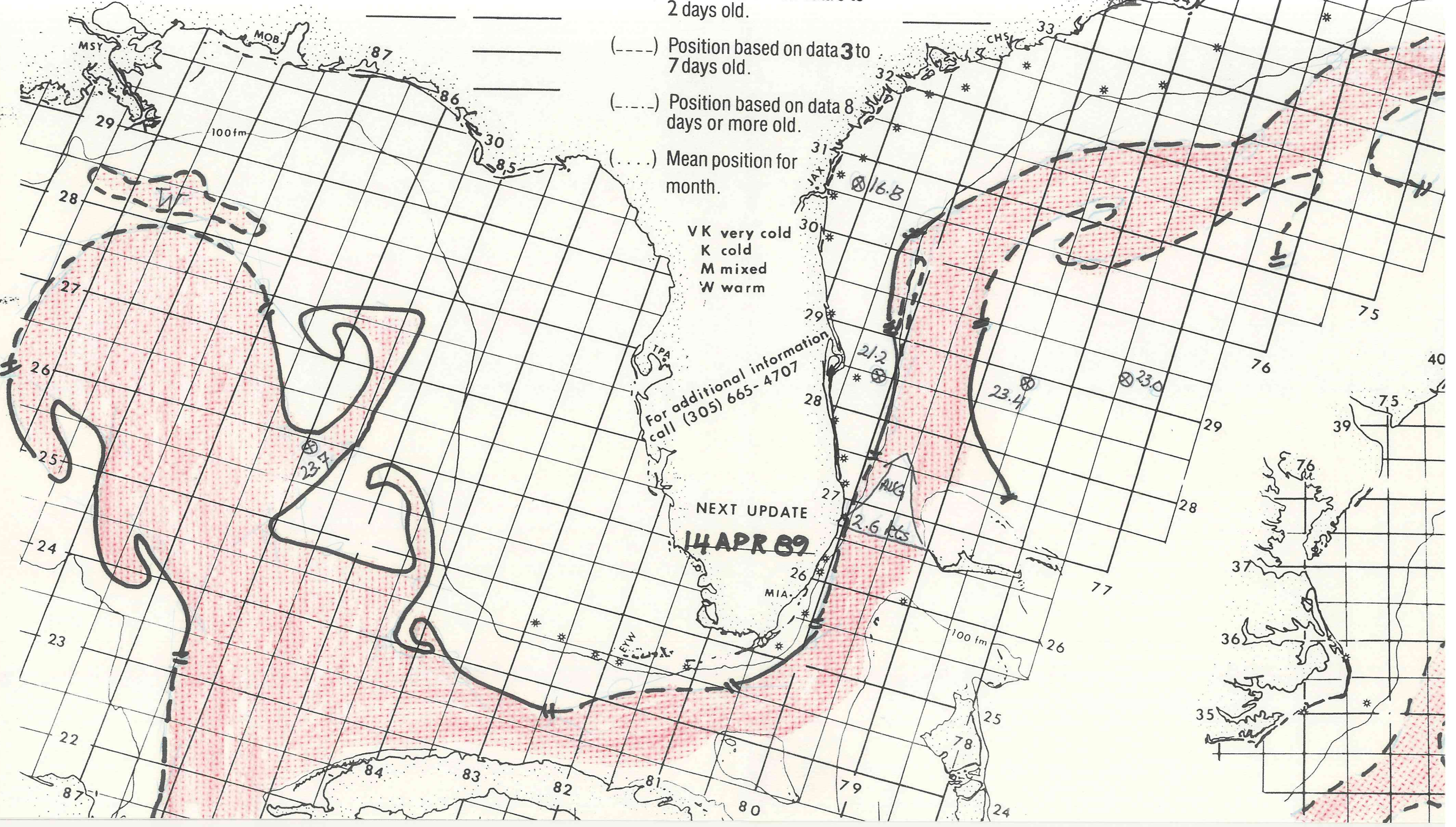
VK very cold  
K cold  
M mixed  
W warm

For additional information  
call (305) 665-4707

NEXT UPDATE  
**14 APR 89**

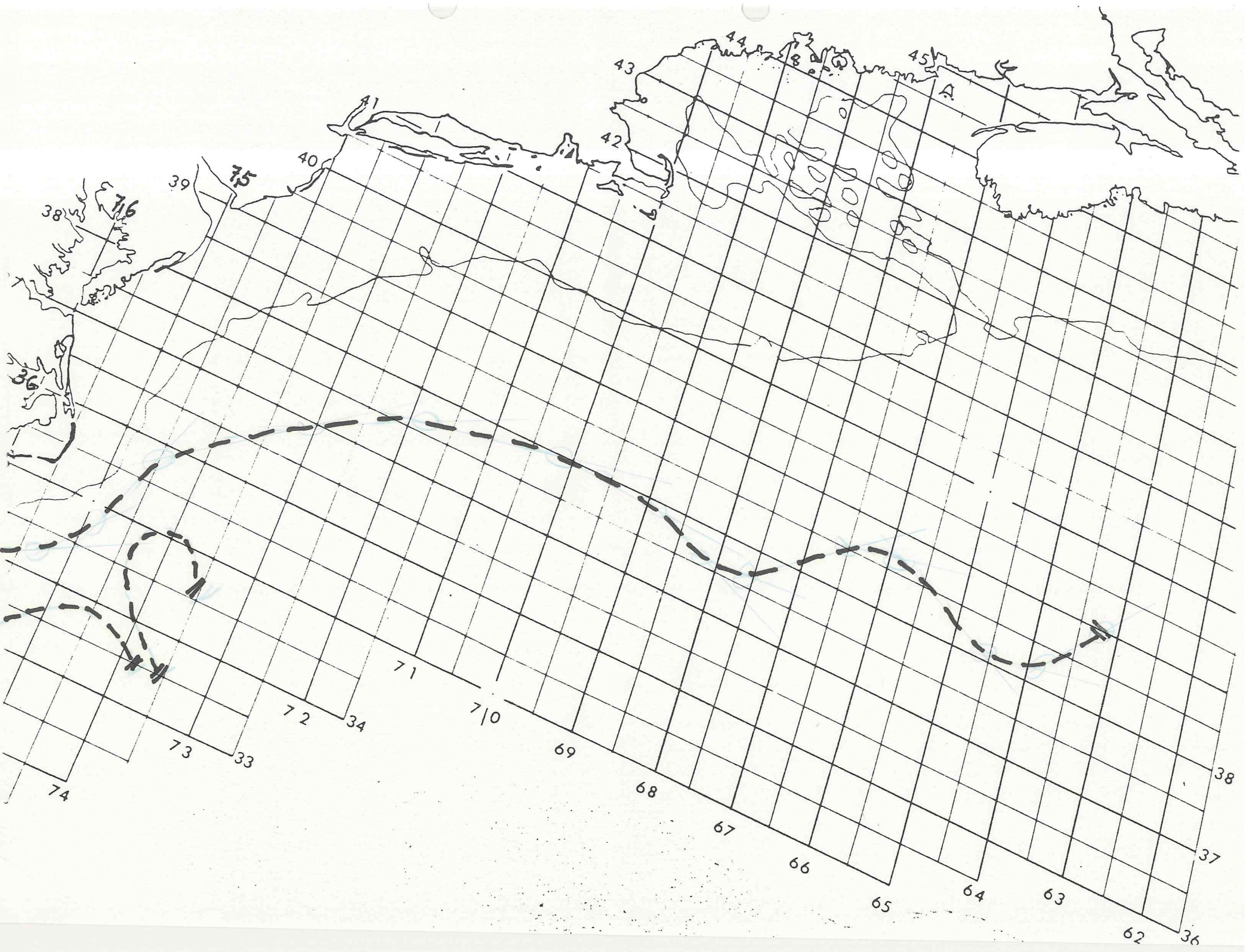
215861 225863 232865 244874 246879  
 254881 257890 259895 269895 276891  
 280885 279877 275871 265865 261863  
 260855 253858 250861 248860 248853  
 247842 240843 240836 239835 237824  
 242817 246805 258799 260799 //

270800 280799 305801 318788 324768  
 337762 343753 348749 358745 370730  
 377718 380701 379689 376681 36  
 377676 385665 387658 381646  
 382639 390632 //





MIAMI SFSS ANALYSIS OF THE GULF STREAM: 12 APR 1989 PART B





Date: 14 APR 1989

Depicted land should not be used for navigation.

Position lines are for the edges of warmer water. The thin streamline is an estimated location for the maximum current. Measured current speeds may be shown.

215860 225863 235865 239868 245876  
253880 260893 266896 274894 279889  
280882 278075 273870 269867 261064  
258856 250861 246860 245857 247847  
248842 242843 239841 237827 238822  
242815 245806 251800 255799 260800 //

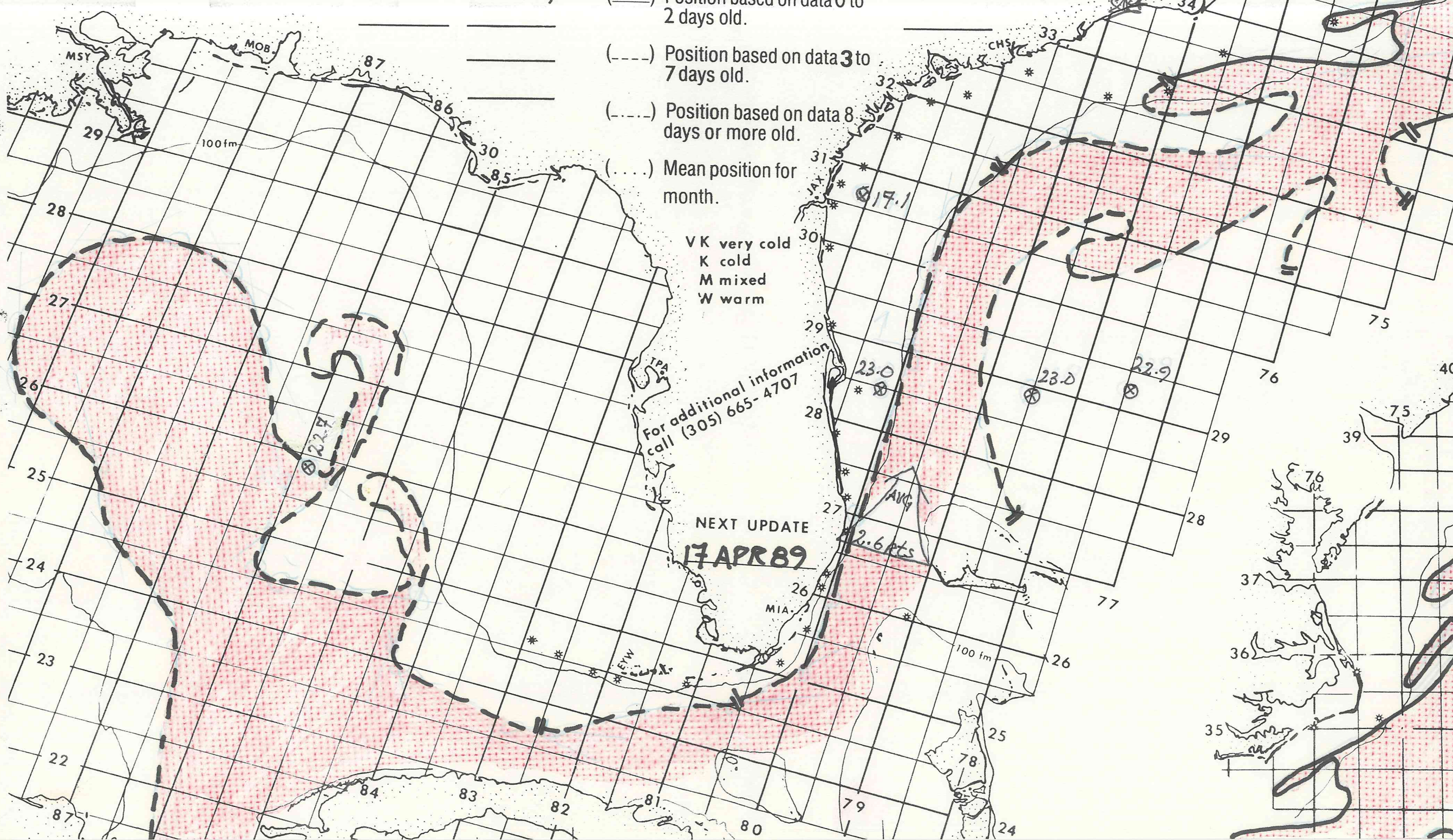
270800 290800 300801 308800 319792  
323771 338760 341756 348755 357744  
376737 376722 384695 378684 36  
379674 389666 391659 381645  
382639 390631 // \_\_\_\_\_

- (—) Position based on data 0 to 2 days old.
- (---) Position based on data 3 to 7 days old.
- (- - - -) Position based on data 8 days or more old.
- (.....) Mean position for month.

VK very cold  
 K cold  
 M mixed  
 W warm

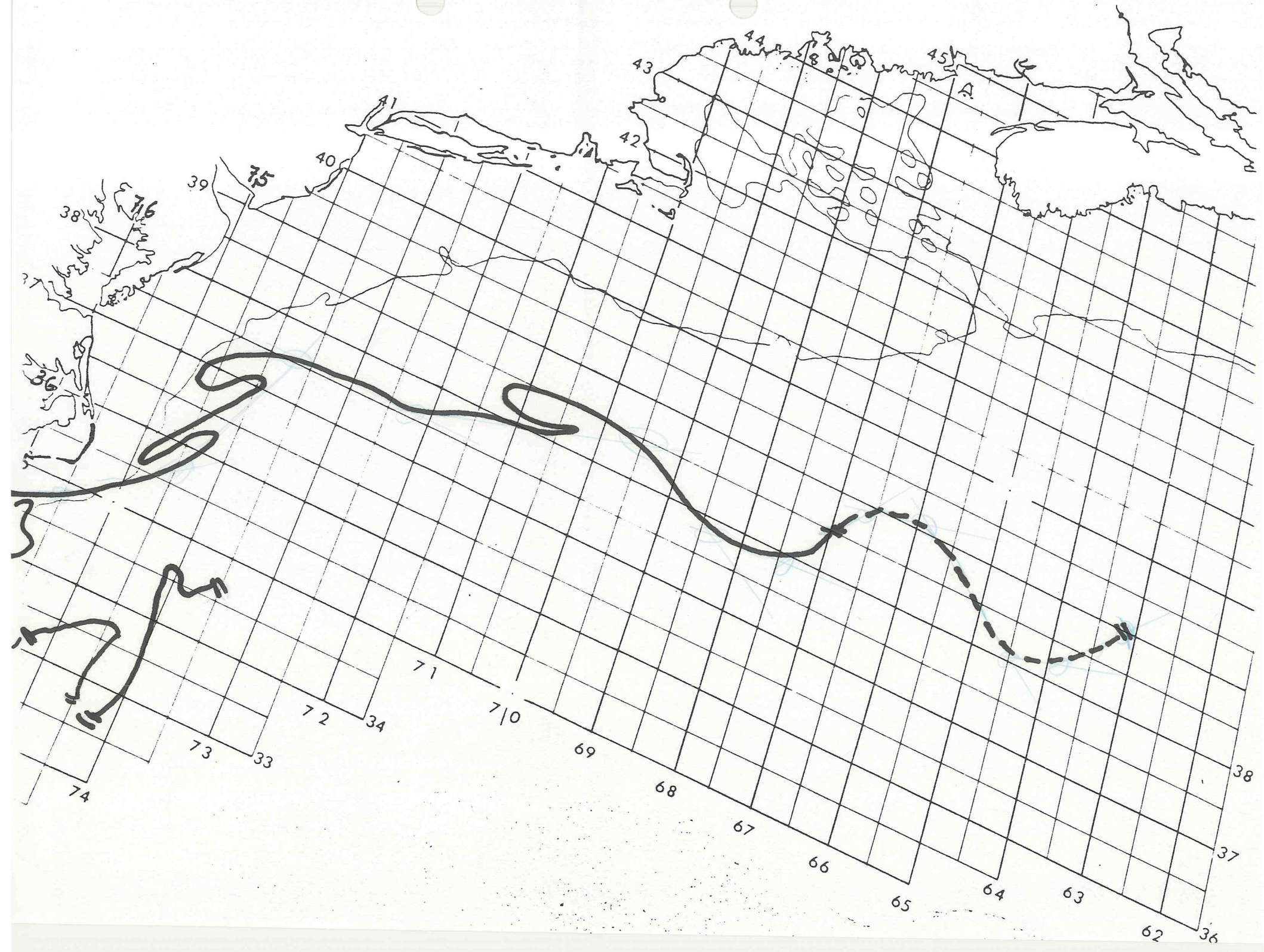
For additional information  
 call (305) 665-4707

NEXT UPDATE  
**17 APR 89**





MIAMI SFSS ANALYSIS OF THE GULF STREAM: **14 APR** 19**89** PART B





Date: 17 APR 19 89

Depicted land should not be used for navigation.

Position lines are for the edges of warmer water. The thin streamline is an estimated location for the maximum current. Measured current speeds may be shown.

- (—) Position based on data 0 to 2 days old.
- (---) Position based on data 3 to 7 days old.
- (- - - -) Position based on data 8 days or more old.
- (. . . .) Mean position for month.

VK very cold  
K cold  
M mixed  
W warm

For additional information  
call (305) 665-4707

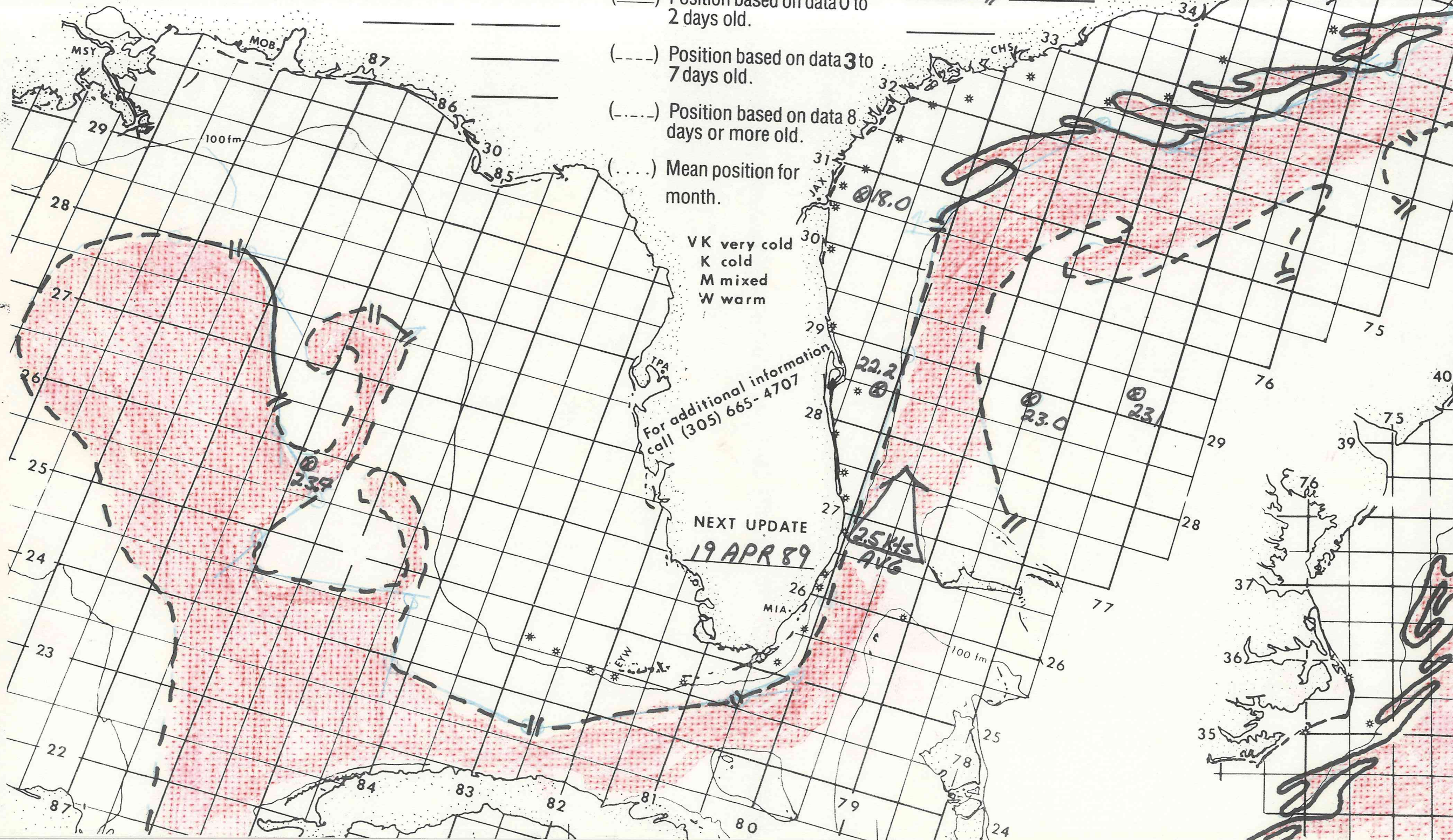
NEXT UPDATE

19 APR 89

25 KHS  
AVG

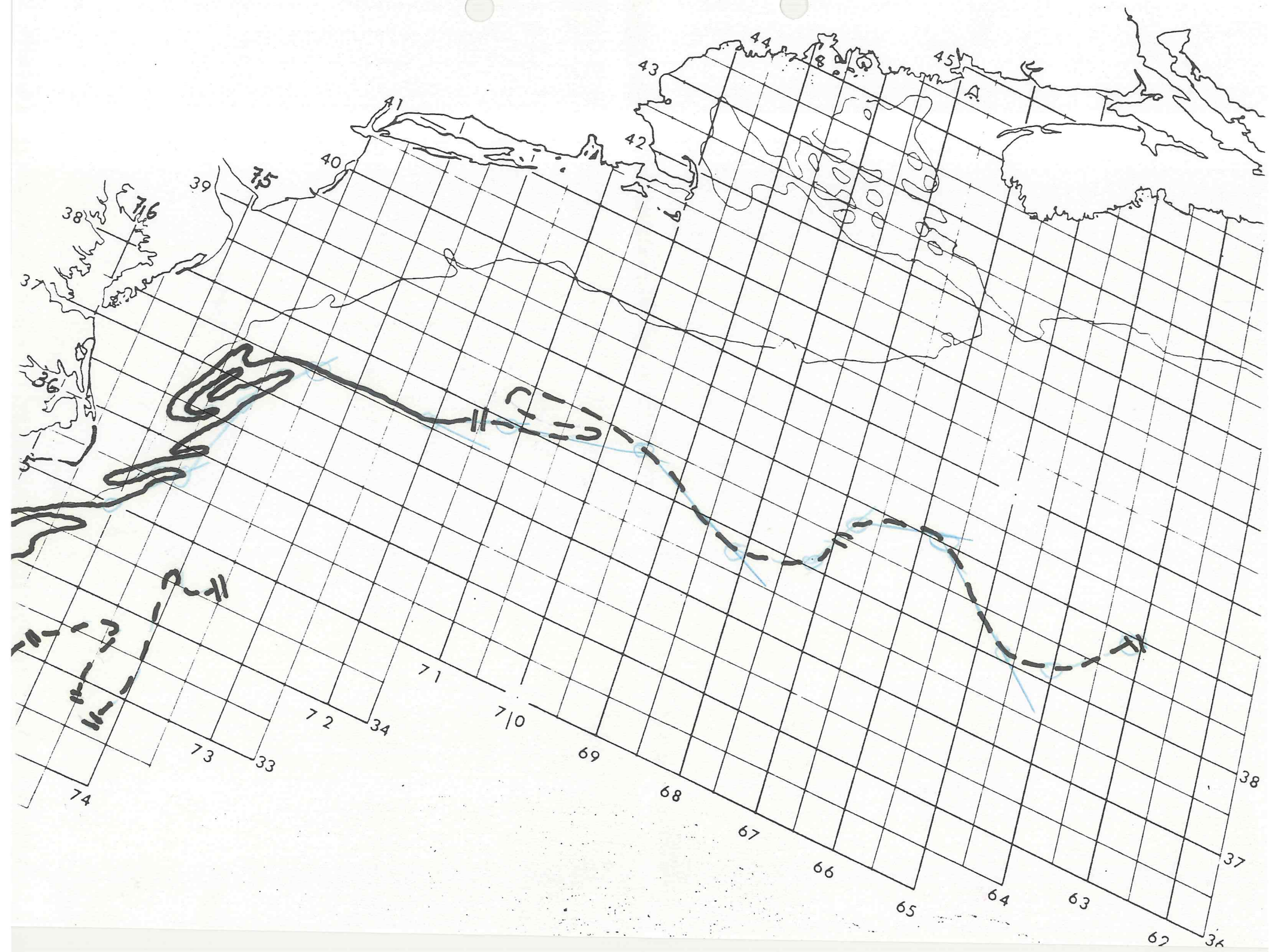
215860 225863 235865 239868 245876  
253880 260893 266896 274894 279889  
280883 280875 277870 261864 255867  
249861 245860 247843 239842 237825  
246805 250800 260799 // \_\_\_\_\_

270800 290800 307801 323787 323778  
330767 339760 340756 350750 356745  
368740 375735 376720 380710 36  
384695 378681 381671 389668  
390658 381646 382640  
390631 // \_\_\_\_\_





MIAMI SFSS ANALYSIS OF THE GULF STREAM: 17 APR 1989 PART B





Date: 19 APR 1989

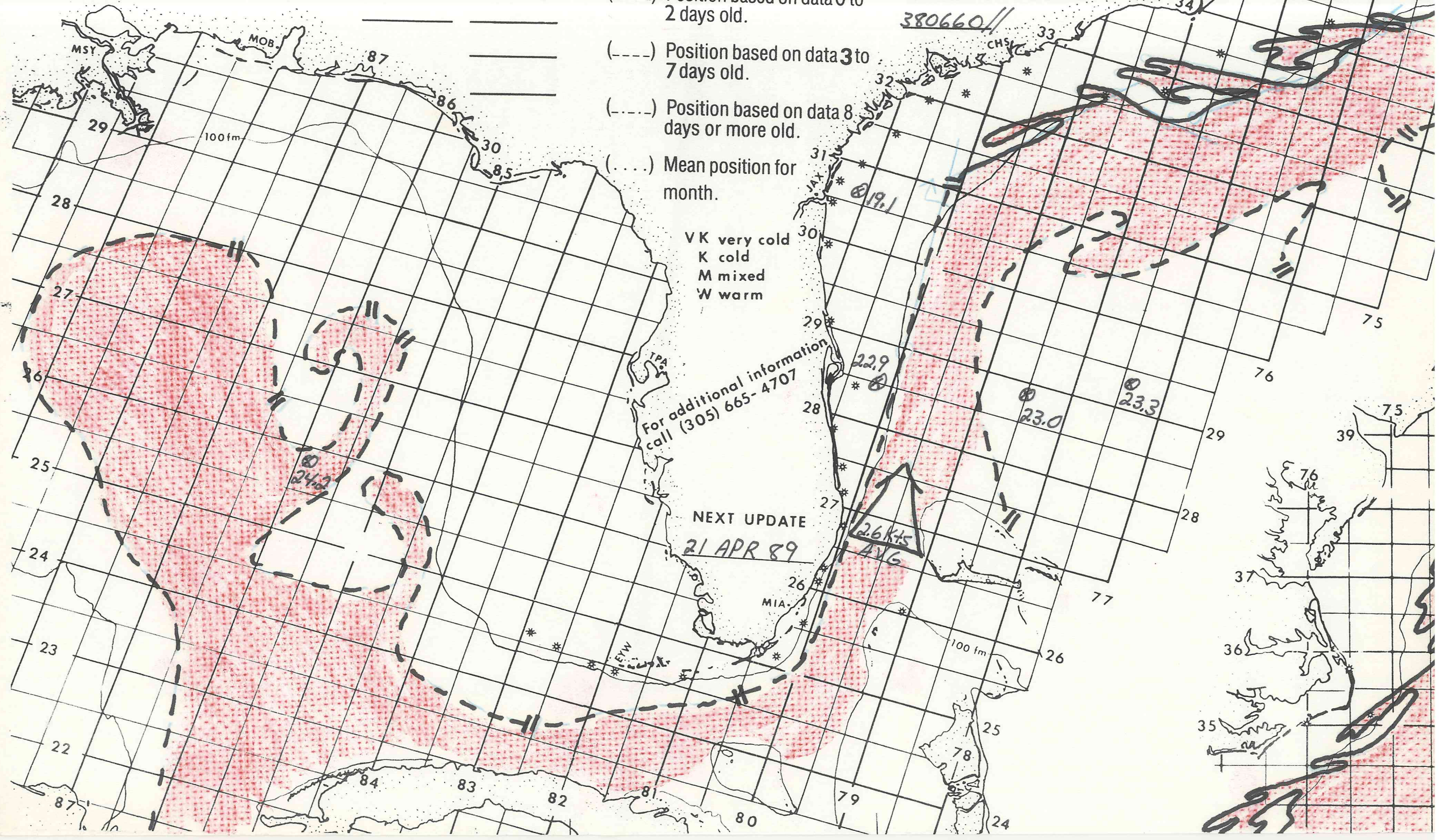
215860 225863 235865 239868 245876  
253880 260893 266896 274894 279889  
280883 280875 277870 261864 255867  
249861 245860 247843 239842 237825  
246805 250800 260799 // \_\_\_\_\_

Depicted land should not be used for navigation.

Position lines are for the edges of warmer water. The thin streamline is an estimated location for the maximum current. Measured current speeds may be shown.

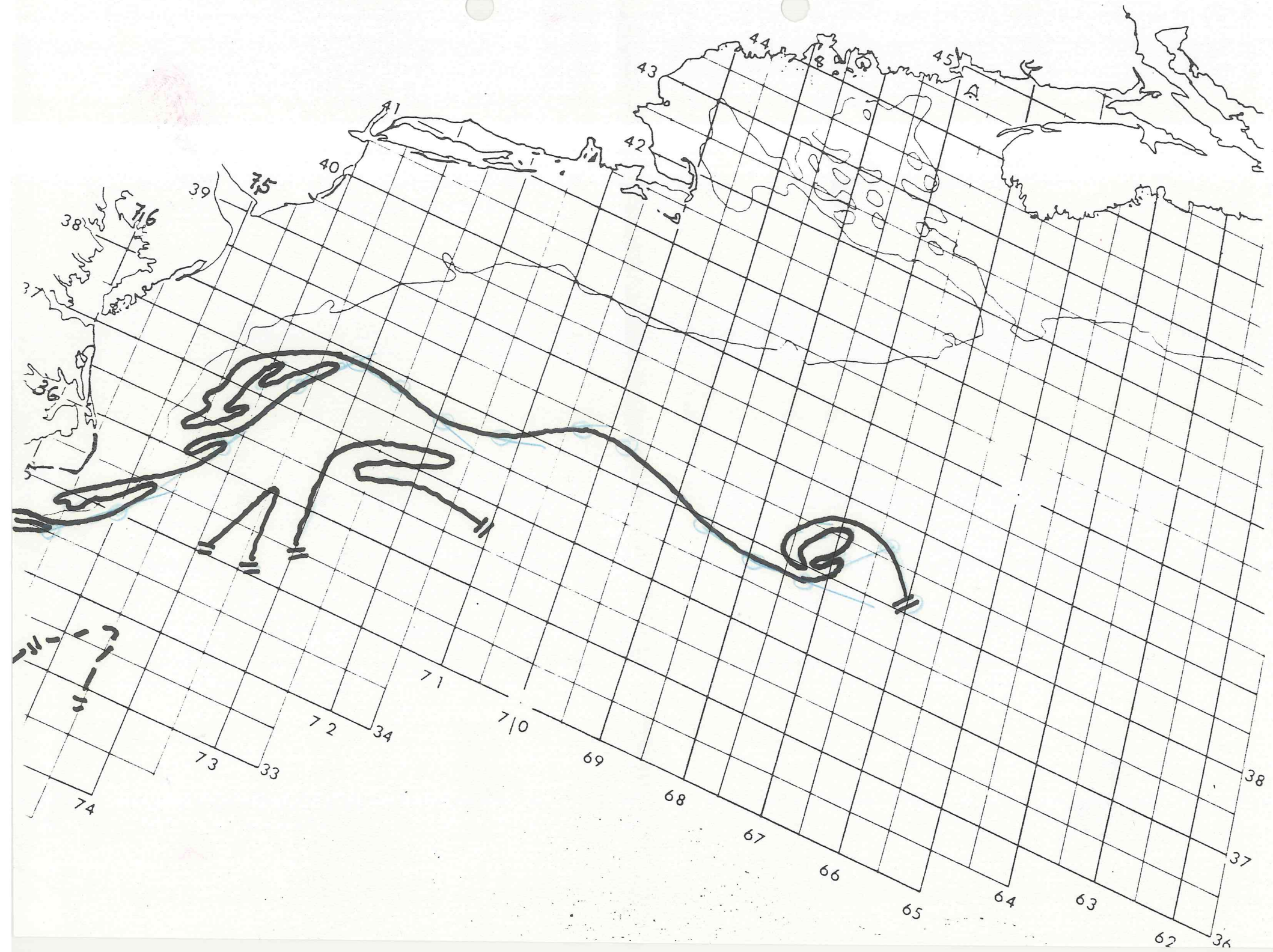
270800 290800 310801 327786 325780  
327776 333768 335764 344758 345756  
350750 363742 374736 379731 36  
378725 377720 378712 383703  
384698 379686 377680  
378672 386664  
380660 // \_\_\_\_\_

- (—) Position based on data 0 to 2 days old.
- (---) Position based on data 3 to 7 days old.
- (- - -) Position based on data 8 days or more old.
- (...) Mean position for month.





MIAMI SFSS ANALYSIS OF THE GULF STREAM: 19 APR 1989 PART B

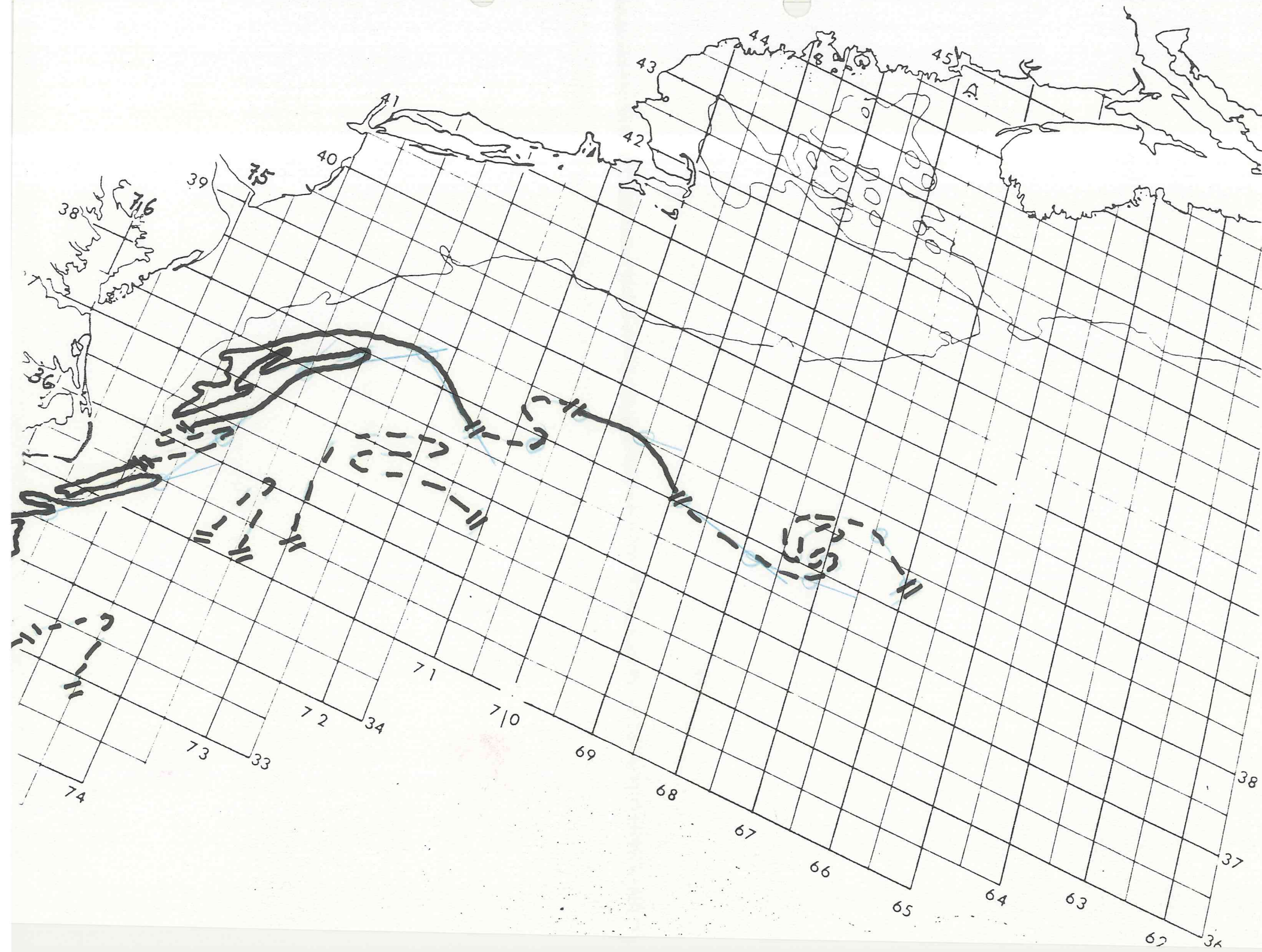








MIAMI SFSS ANALYSIS OF THE GULF STREAM: 21 APR 1989 PART B





Date: 24 APR 1989

Depicted land should not be used for navigation.

Position lines are for the edges of warmer water. The thin streamline is an estimated location for the maximum current. Measured current speeds may be shown.

- (——) Position based on data 0 to 2 days old.
- (- - -) Position based on data 3 to 7 days old.
- (.....) Position based on data 8 days or more old.
- (....) Mean position for month.

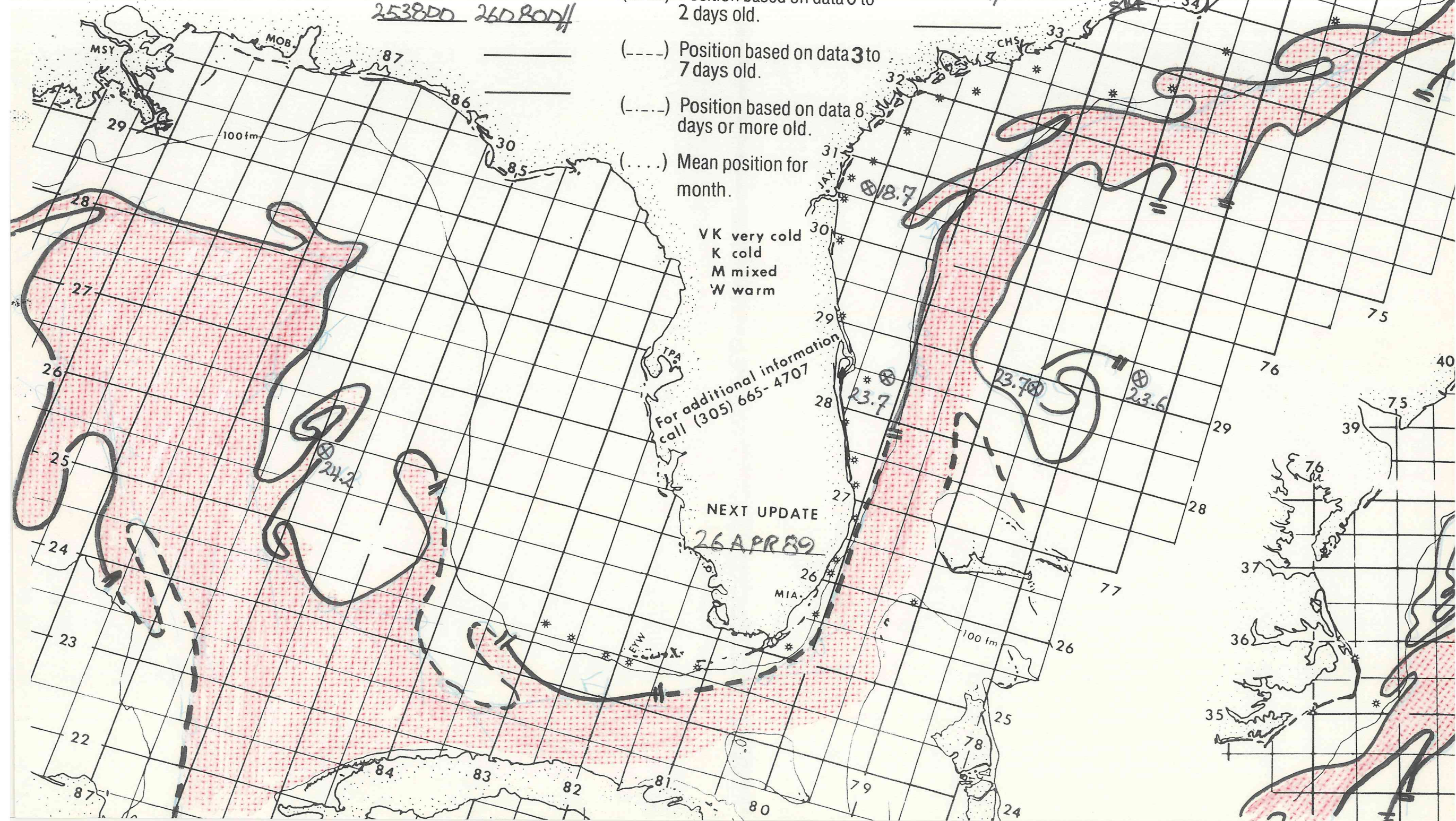
VK very cold  
K cold  
M mixed  
W warm

For additional information call (305) 665-4707

NEXT UPDATE  
26 APR 89

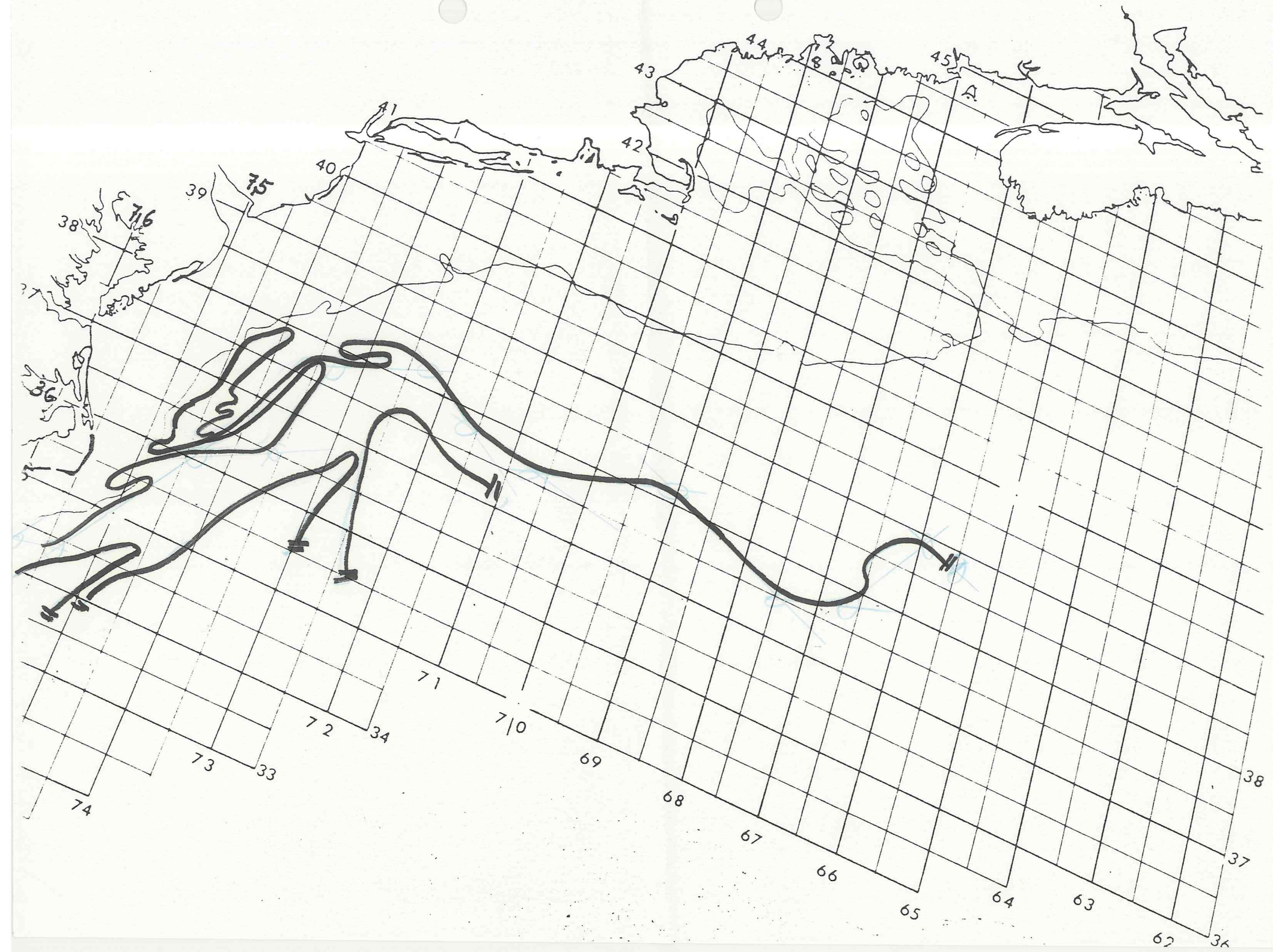
215860 225862 234864 240870 245875  
250879 253882 257891 261892 267899  
274897 282890 281888 281880 281870  
281864 278866 277865 265868 254866  
246861 242852 243842 241841 237836  
236832 239824 240820 244810 247804  
253800 260800//

270800 287799 292800 304801 316795  
324786 325778 332770 336763 343758  
244754 361744 365736 378733 36  
382722 378716 377706 382691  
376674 377668 389659  
388655//





MIAMI SFSS ANALYSIS OF THE GULF STREAM: 24 APR 1989 PART B





Date: 26 APR 1989

215860 225862 234864 240870 245875  
250879 253882 260895 274901 280895  
282885 278877 277871 281865 273862  
263867 255867 245860 241851 241840  
235833 240822 242814 246805 252800  
260799//

Depicted land should not be used for navigation.

Position lines are for the edges of warmer water. The thin streamline is an estimated location for the maximum current. Measured current speeds may be shown.

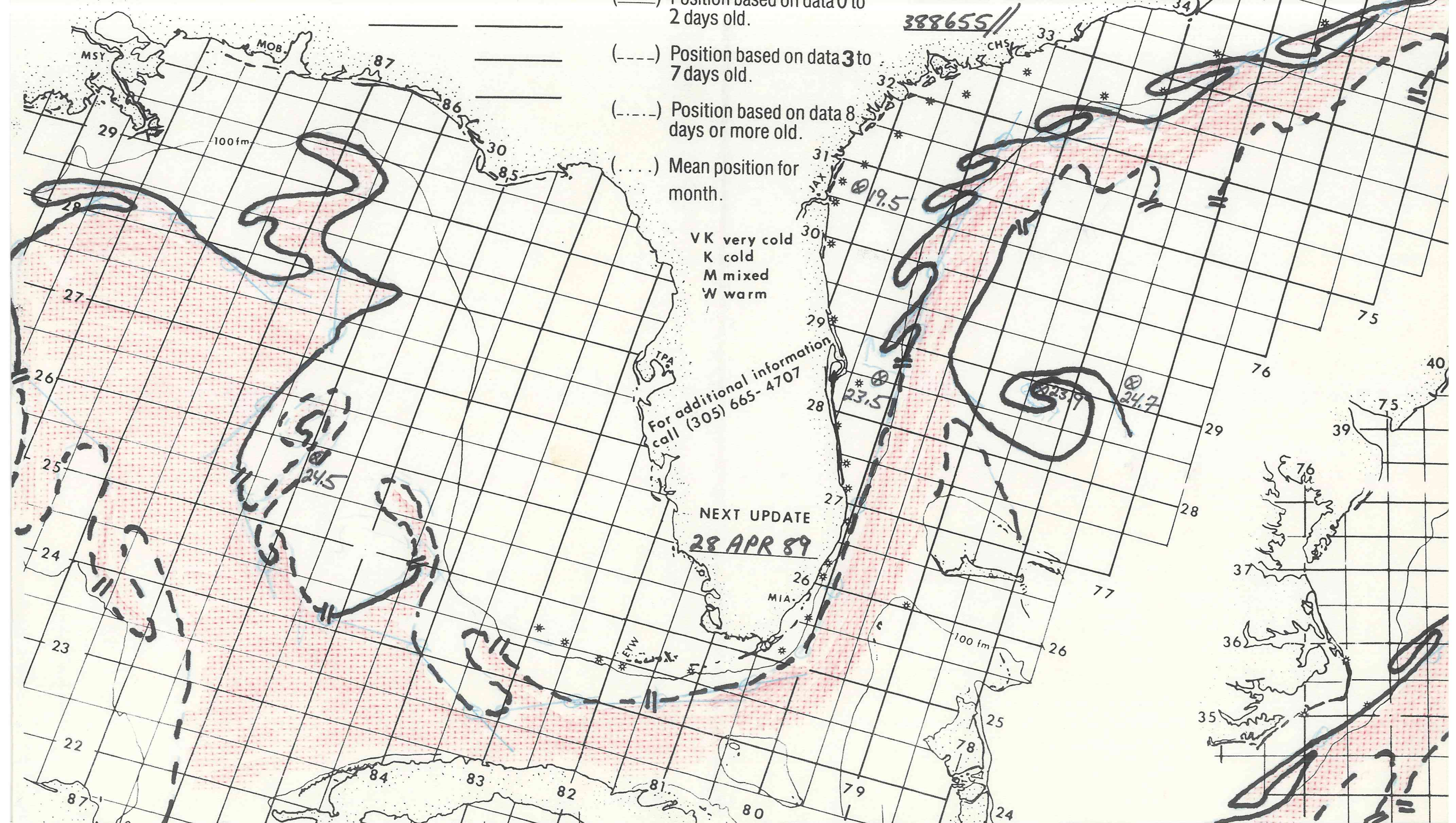
- (—) Position based on data 0 to 2 days old.
- (---) Position based on data 3 to 7 days old.
- (- - - -) Position based on data 8 days or more old.
- (....) Mean position for month.

VK very cold  
 K cold  
 M mixed  
 W warm

For additional information  
 call (305) 665-4707

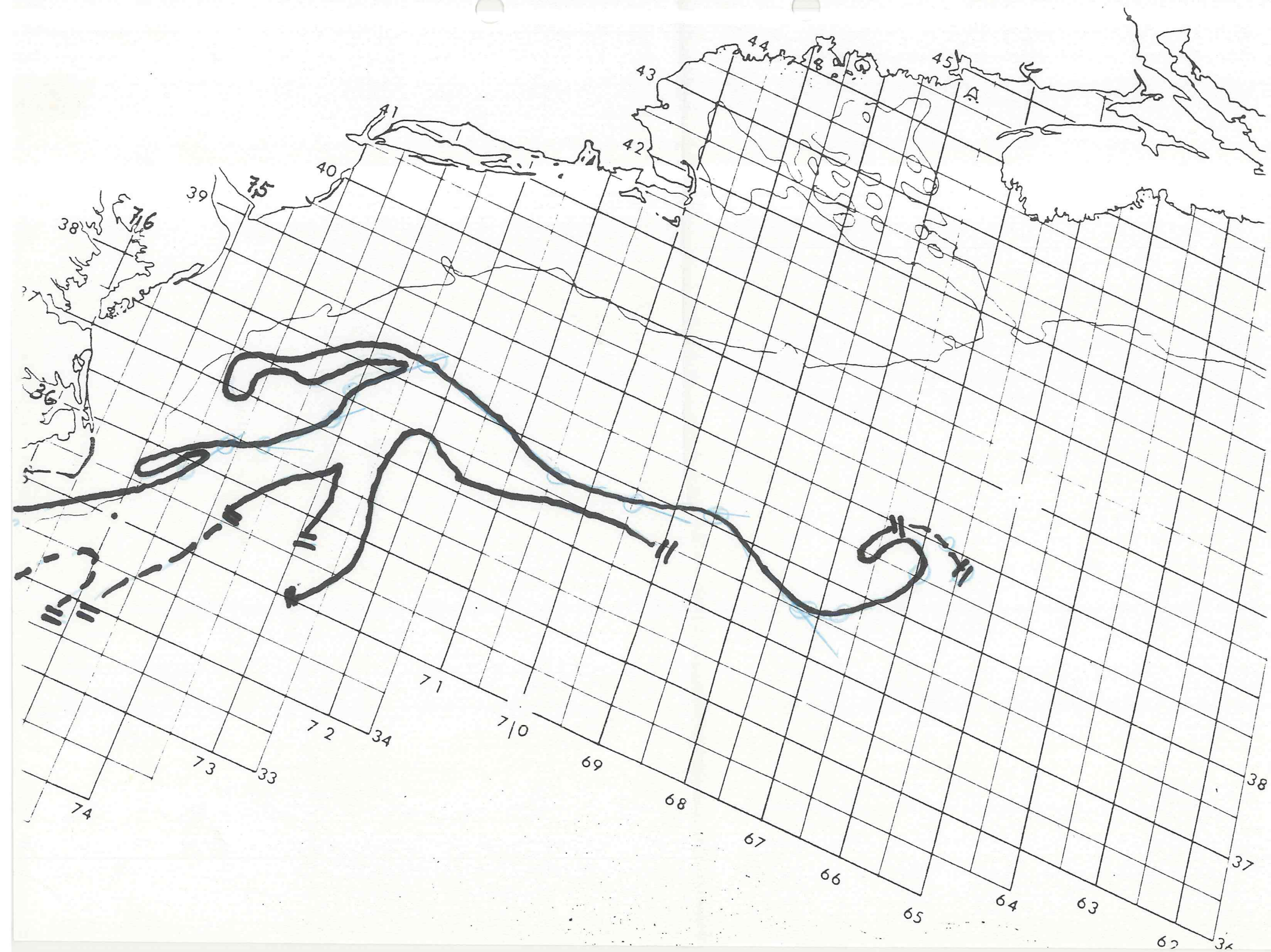
NEXT UPDATE  
28 APR 89

270799 292799 300800 306800 310798  
317797 320790 324786 325780 333773  
336771 337765 348757 359745 36  
364741 365737 371731 376730  
383723 377705 378695 381685  
375672 385660 390657  
388655//





MIAMI SFSS ANALYSIS OF THE GULF STREAM: 26 APR 1989 PART B





Date: 28 APR 1989

Depicted land should not be used for navigation.

Position lines are for the edges of warmer water. The thin streamline is an estimated location for the maximum current. Measured current speeds may be shown.

215862 220863 230866 234868 242872  
249881 254882 257890 265896 271901  
278895 282892 283887 279878 276869  
273858 265863 257867 255868 252867  
247860 244849 246842 241841 236832  
239823 240819 242812 245808 250802  
255800 260800//

270799 305800 318791 324782 326775  
332770 340761 348756 375728 384724  
384718 378705 379694 381687 36  
380682 375677 375671 379664  
389655//

- (—) Position based on data 0 to 2 days old.
- (---) Position based on data 3 to 7 days old.
- (- - - -) Position based on data 8 days or more old.
- (....) Mean position for month.

VK very cold  
 K cold  
 M mixed  
 W warm

For additional information  
 call (305) 665-4707

NEXT UPDATE  
**01 MAY 89**

