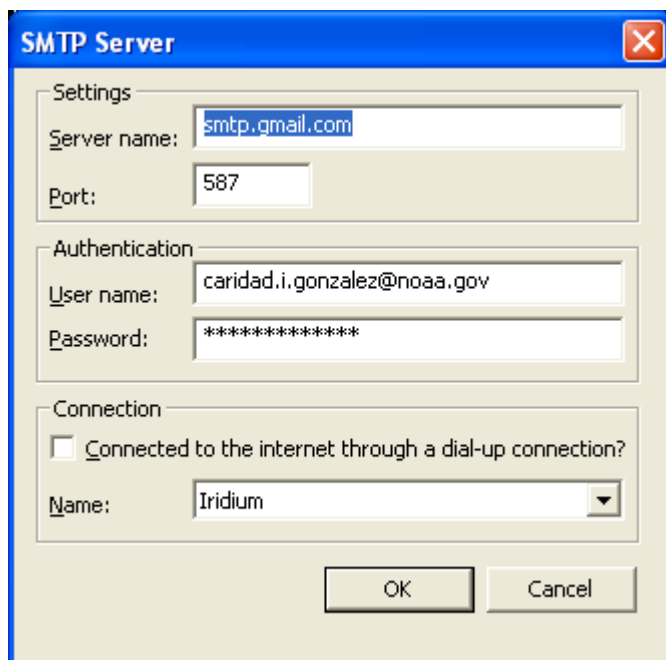


AMVERSEAS V 9.0 - Sending Observation via email (NEW FEATURE)

SEAS Console application

To configure the outgoing server (SMTP) you can go into the **Setup** menu and you are able to input the outgoing server settings selecting the option **Outgoing server (SMTP) settings**.

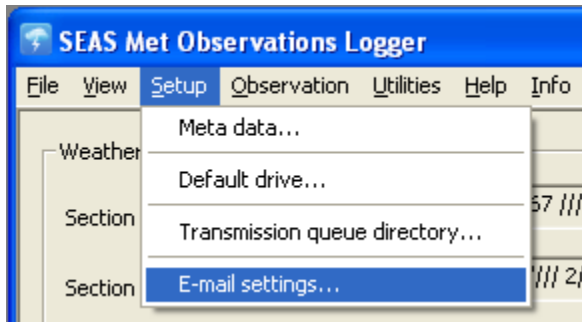
The dialog SMTP Server appears.



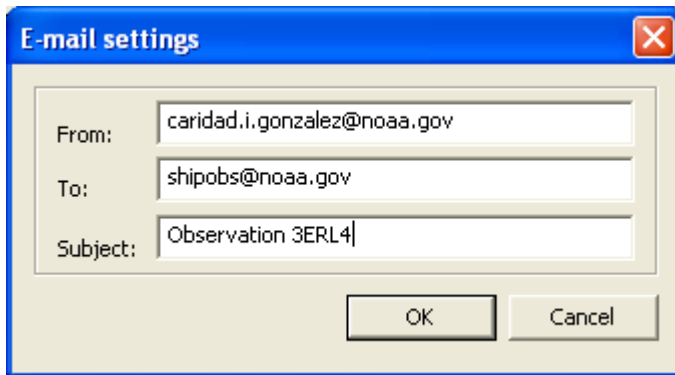
Met Observations Logger application

To setup the email in Met Observations Logger, from the **Setup** menu select **E-mail settings**.

Setup | E-mail settings...: Setup the email.



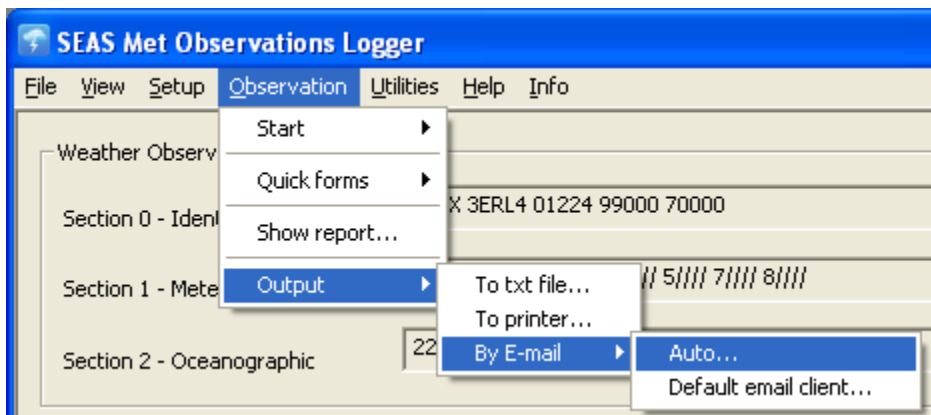
Use this command to manage the detailed e-mail settings. Insert **From**, **To**, and **Subject** information.



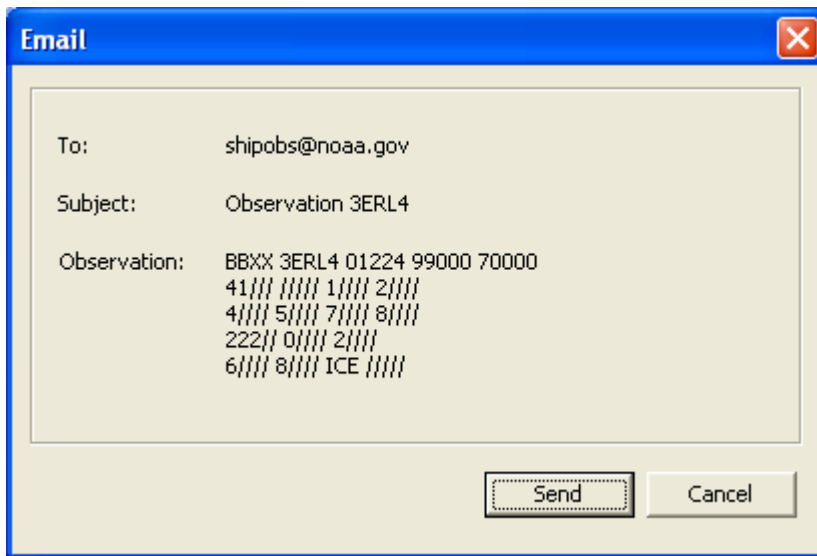
To send the observation via email the user just to select the provided options

Observation|Output|By E-mail...: Use this command to send the observation via e-mail automatically or using the default email client.

Observation|Outout|By E-mail|Auto...: Sends an e-mail message to an SMTP server for delivery.

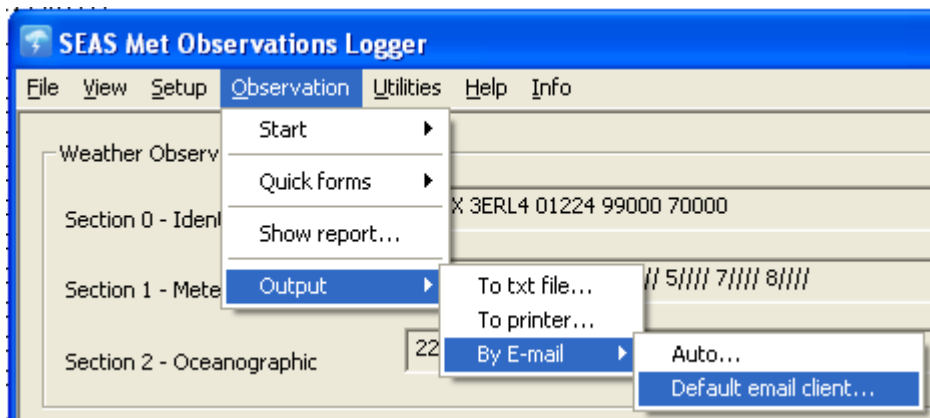


The user can verify the email.



If he/she means that it is correct he/she can send it.

Observation|Outout|By E-mail|Default email client...: Sends an email using the system's default email client (Thunderbird, Outlook, etc.).



When the user clicks on this, the resident email client opens with the **To** and **Subject** lines with the previously set values, and as **Body** the observation message.

