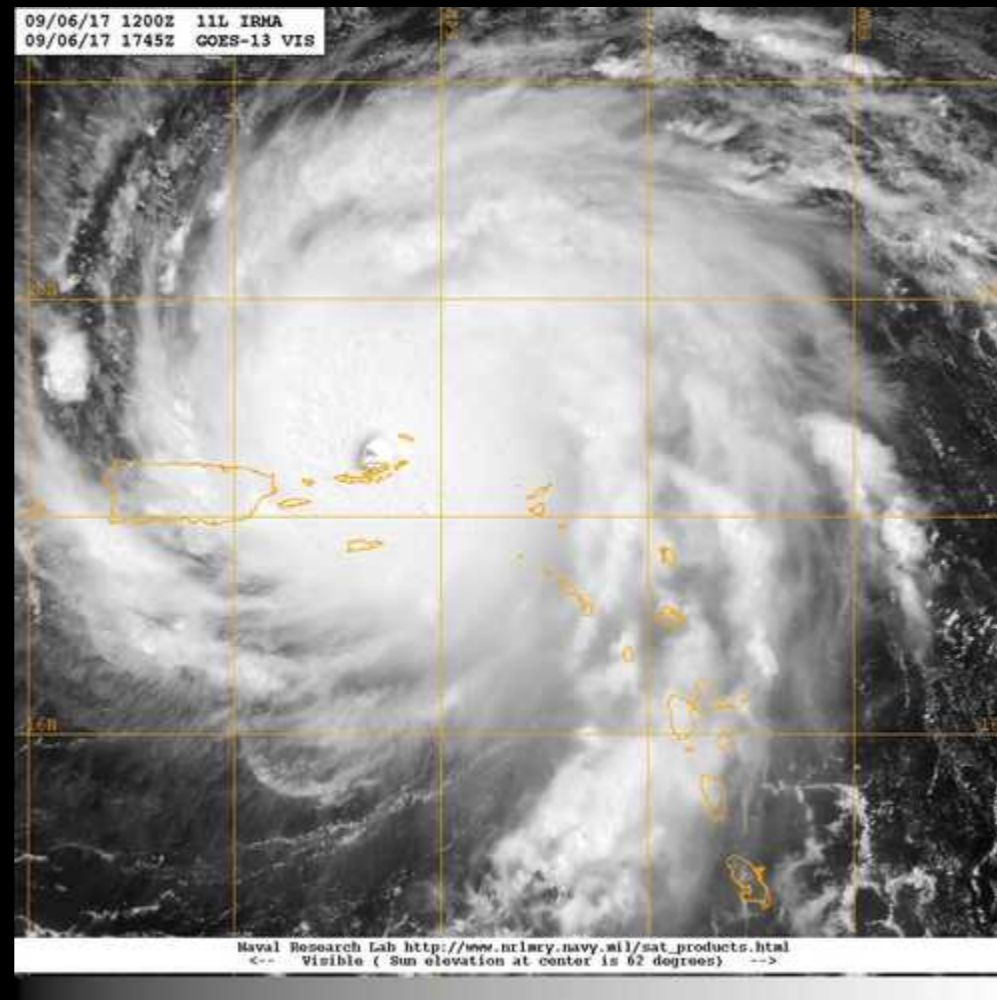
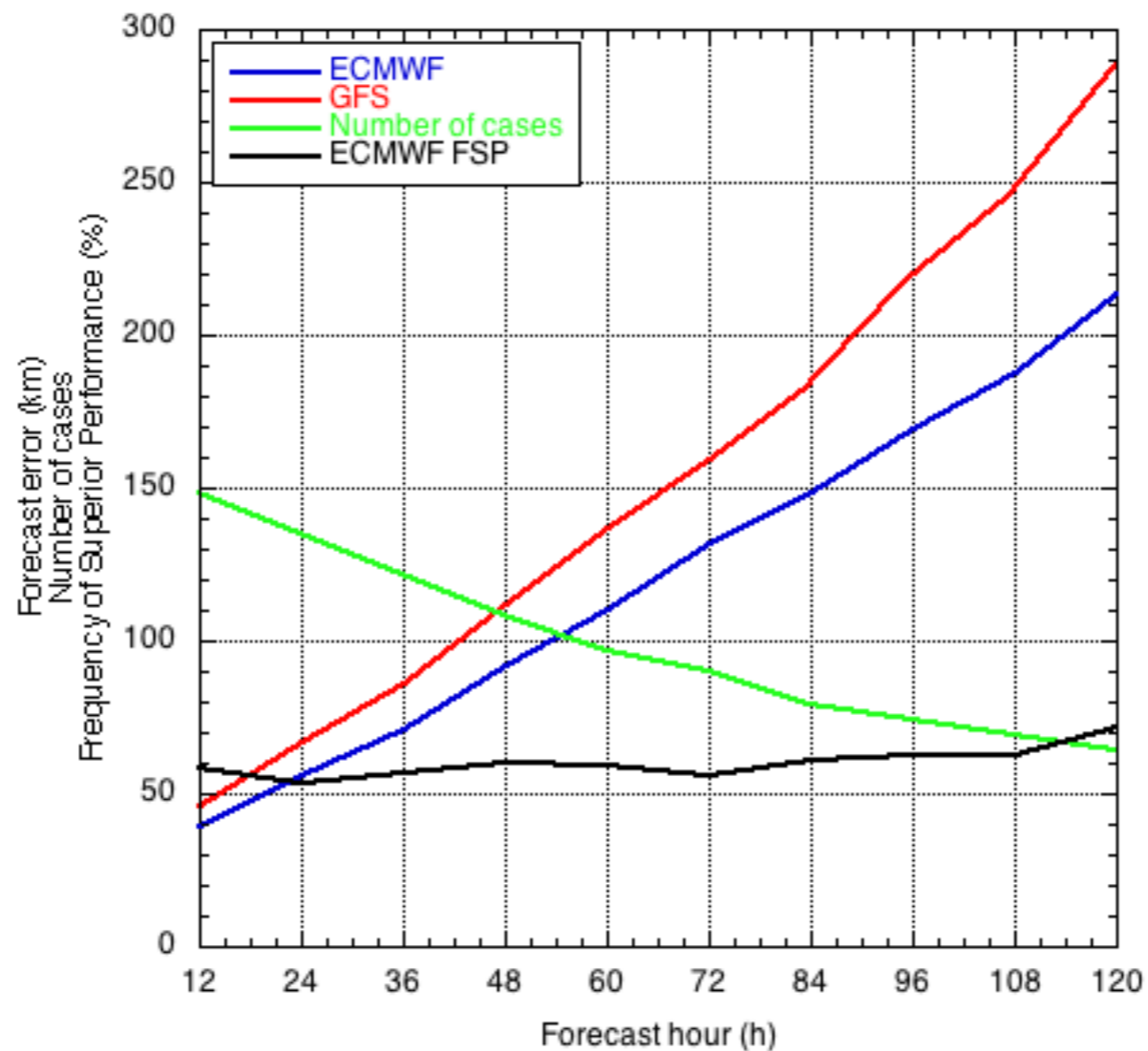


IFS (EC) and GFS forecasts during 2017

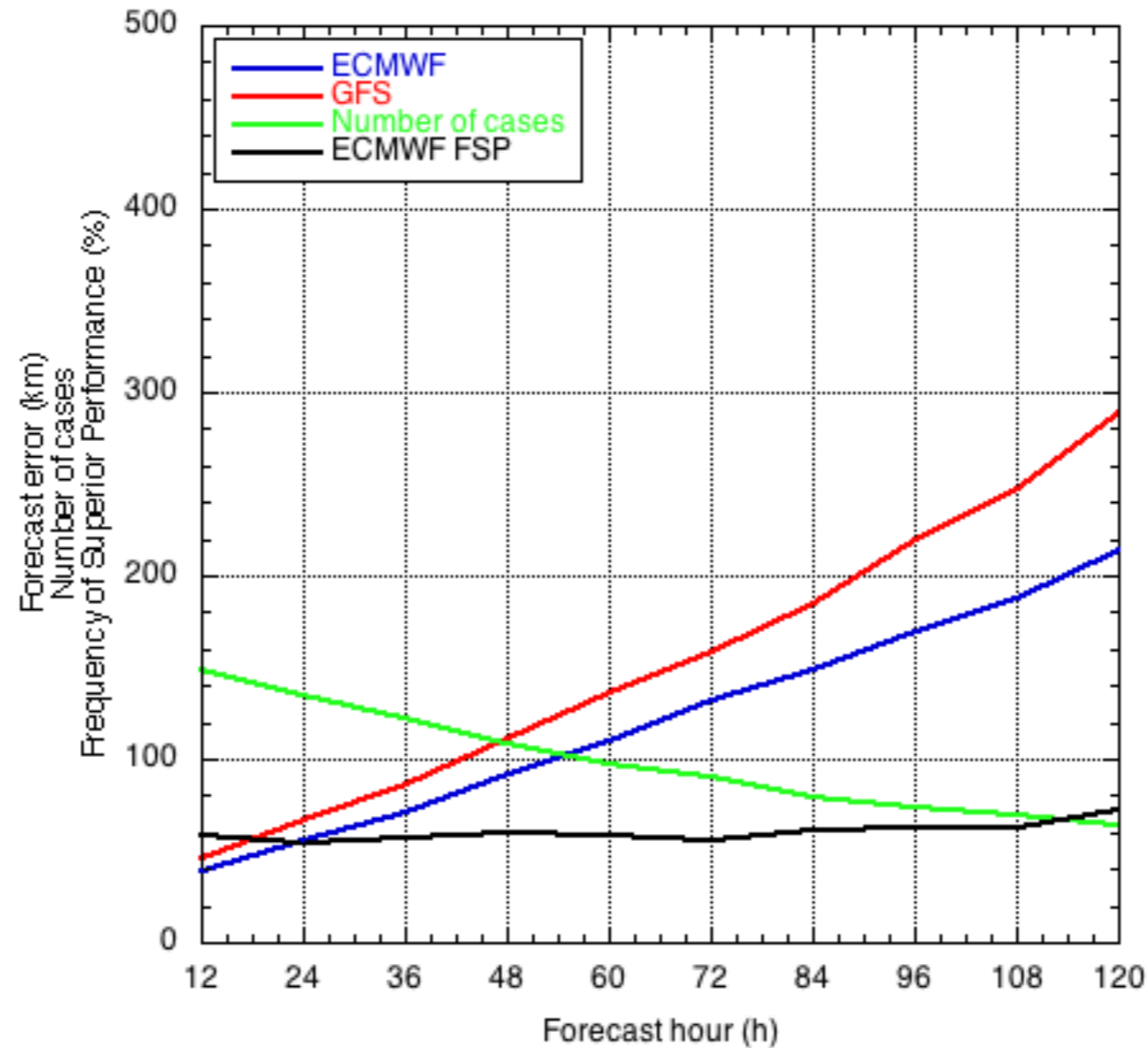


Sim D. Aberson
Science Meeting
12 October 2017

During 2017, IFS track forecast errors have been better than those from GFS about 60% of the time.

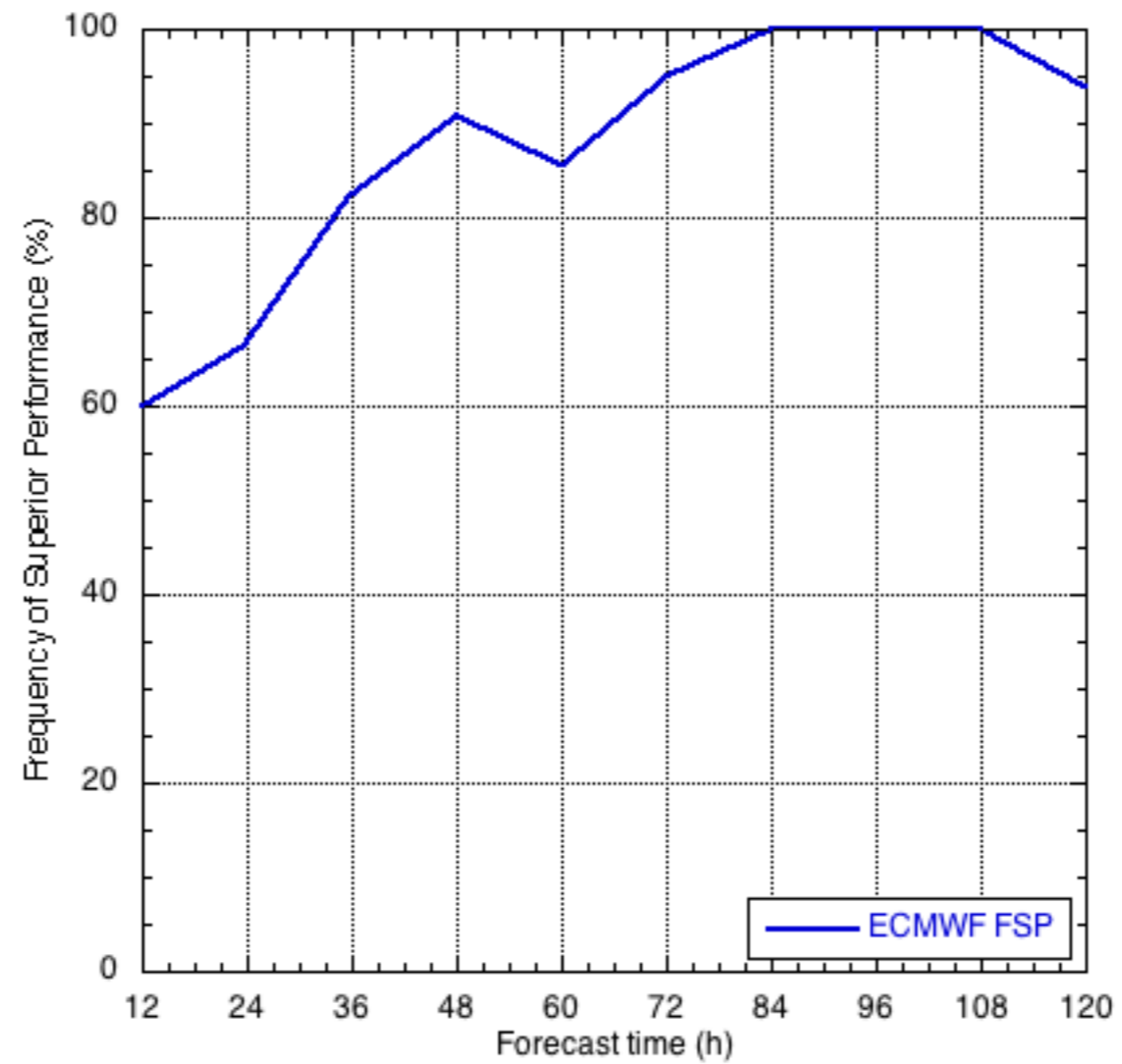


Preliminary results for Hurricane Irma

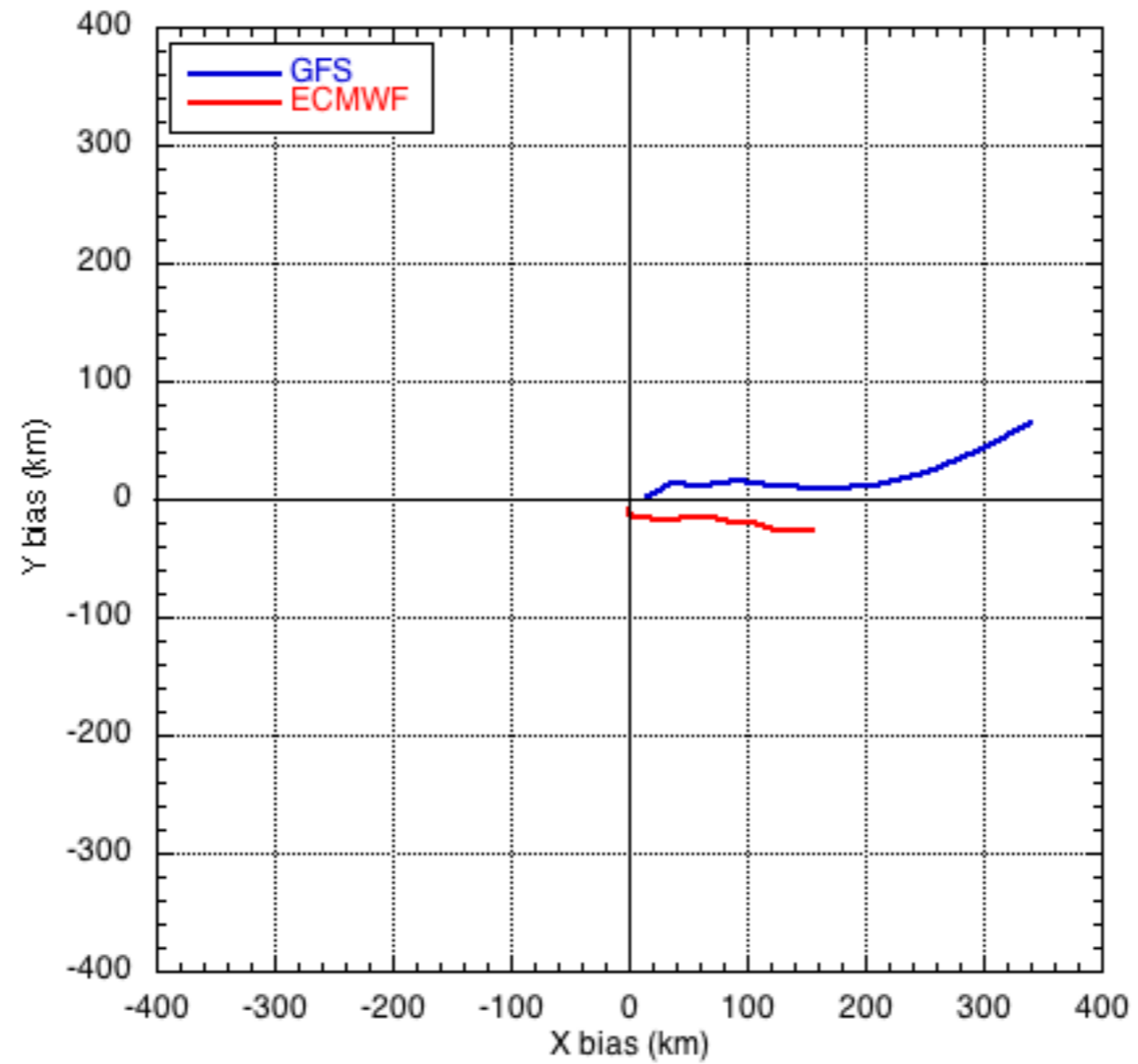


Irma was the only storm in which one model did substantially better than the other for track.

IFS nearly always better than GFS



GFS has a much larger eastward bias than IFS



Currently downloading IFS fields (TIGGE) for comparison with GFS to see what caused the large differences.